

Tucker
WIRELINE SERVICES

**DUAL INDUCTION
RESISTIVITY LOG**

Company RUNNING FOXES PETROLEUM,
Well SHAW #3-4-25 TWIN
Field WILDCAT
Country BOURBON
State KANSAS
Country USA
API No. 15-011-23777-00-00

File No : TUL-566695
Company : RUNNING FOXES PETROLEUM, INC.
Well : SHAW #3-4-25 TWIN
Field : WILDCAT
Country : BOURBON
State : KANSAS
Country : USA
API No : 15-011-23777-00-00

Location :
495' FNL & 800' FEL
SE NW NE NE

LSD : **Sect** : 25 **Twp** : 24S **Rge** : 25E

Permanent Datum: GL **Elevations:** KB 0.00 Ft **Services:** CNT
Drilling Measured From: GL **DF** 0.00 Ft **LDT**
Log Measured From: GL **GL** 864.00 Ft **PLT**
Above Permanent Datum: 0.00 Ft

Date	Jul 27 2011	
Run Number	1	
Depth--Driller	423.0	Ft
Depth--Logger	405.0	Ft
First Reading	404.0	Ft
Last Reading	22.0	Ft
Casing--Driller	22.0	Ft
Casing--Logger	22.0	Ft
Bit Size	5.625	In
Casing Size	8.625	In
Hole Fluid Type	NATIVE / FRESH	
Density	0.0 LBS/GAL	
Fluid Loss	0.0 CC	
PH/Viscosity	0.0 0.0 SEC	
Sample Source	MEASURED	
RM@Measured Temp.	1.200	@ 90 F
RMF@Measured Temp	1.020	@ 90 F
RMG@Measured Temp.	1.380	@ 90 F
Source RMF/RMC	CALCULATED/CALCULATED	
RM@BHT	1.450 @ 73 F	
Time Circulation Stopped		
Max Recorded Temp.	73	F
Equipment/Base	TRK123	TULSA
Recorded By	R. FRANKLIN	
Witnessed By	C. COUNTS	

The customer is hereby warned that by providing the log data herein, T. W. S. does not agree to provide any interpretation of log data, conversion of log data to physical rock parameters or recommendations. T. W. S. does not guarantee or warrant either expressly or impliedly, the accuracy of any interpretation of log data, conversion of log data to physical rock parameters or recommendations which may be given by T. W. S. personnel. Any interpretation, conversion or recommendation is not part of the consideration for the agreement between the parties and is not part of any part of the charge by T. W. S. for its services. Any user of the log data is warned that said user is not entitled to rely on interpretations, conversions or recommendations as aforesaid.

Bitsize Intervals		Casing Strings		
Size (In)	Bottom (Ft)	Size (In)	Weight (Lbs)	Bottom (Ft)
5.625	423.00	8.625	24.00	22.00

Run Number	1	
Date	Jul 27 2011	
Date/Time On Bottom	Jul 27 2011 10:15	
Depth to Fluid	0.0	Ft
Salinity	0.000	PPM
RMF@BHT	1.230 @ 73	F
RMC@BHT	1.670 @ 73	F

Run Number 1

Comments

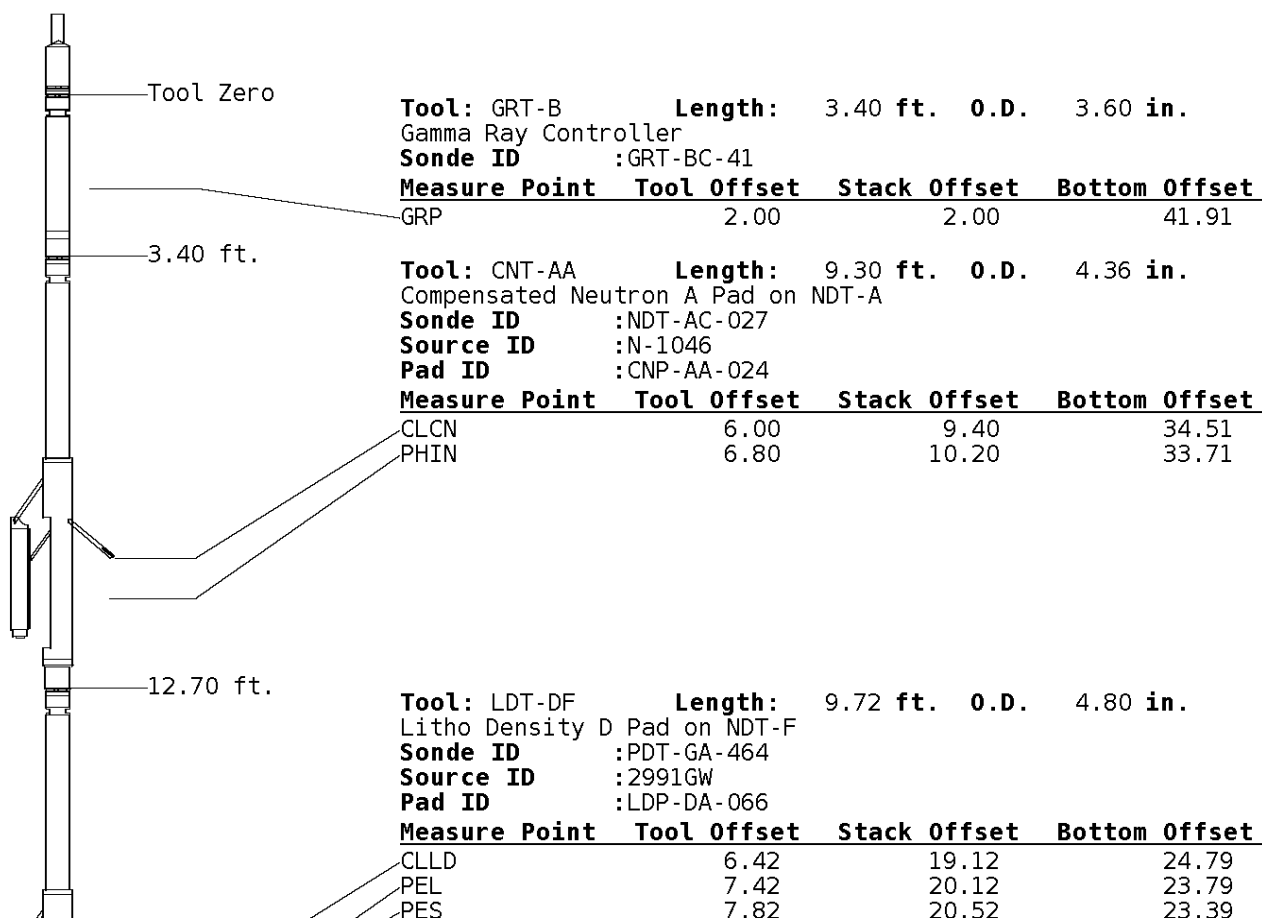
ALL PRESENTATIONS AS PER CUSTOMER REQUEST.
 GRT, CNT, LDT, AND PIT RUN IN COMBINATION.
 CALIPERS ORIENTED ON X-Y AXIS.
 2.71 G/CC USED TO CALCULATED POROSITY.
 ANNULAR HOLE VOLUME CALCULATED USING 2.875" PRODUCTION CASING.
 REPEAT PULLED UP HOLE DUE TO TIGHT TD PICKUP.

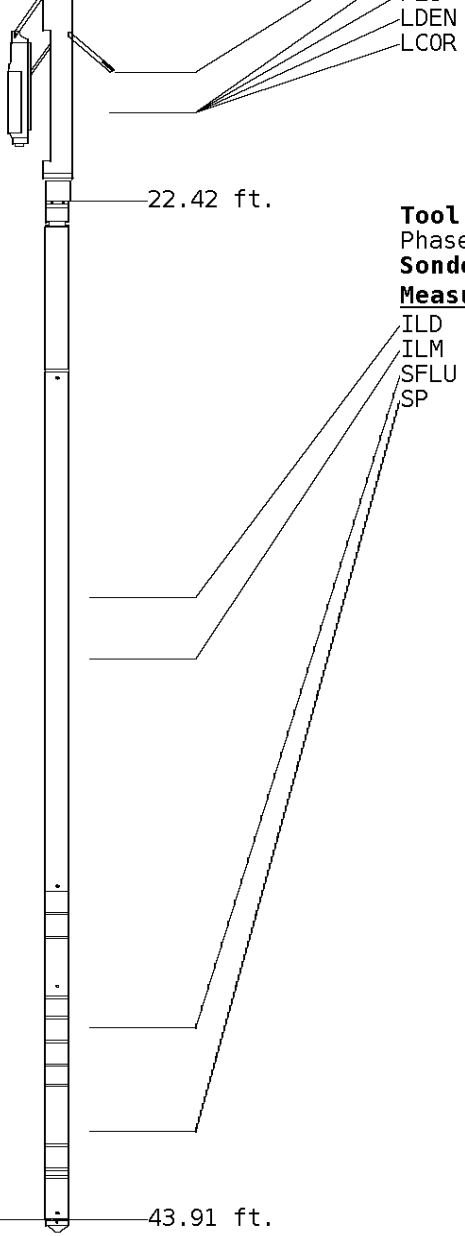
GRT: GRP.
 CNT: PHIN, CLCNIN.
 LDT: PORL, LCORN, PECLN, LDENN, PORLLS, CLLDIN.
 PIT: ILD, ILM, SPU, SFLAEC.

OPERATORS:
 S. DAVIS
 T. HOBBS

Tool String Schematic

Total Tool Length - 43.91 ft.
Maximum Outside diameter - 4.80 in.
Net Weight in Air - 743.00 lbs.





7.62 20.32 23.59
7.62 20.32 23.59

Tool: PIT-CA **Length:** 21.49 ft. **O.D.** 3.62 in.
Sonde ID :PIT-CA-069
 Phased Dual Induction w/ RM & D

Measure Point	Tool Offset	Stack Offset	Bottom Offset
ILD	8.92	31.34	12.56
ILM	10.10	32.52	11.39
SFLU	17.49	39.91	4.00
SP	20.60	43.02	0.88

Well File: run_sha 3-4-25t_jul 27_stk **Scale:** 1:600
Segment: V1.D1.S4 MAIN **Acquired:** 2011-07/27 10:09 3.2.0-9963
Reference: 0 **Processed:** 2011-07/27 11:22 3.2.0-9963

TENSION
LBS

10000 0

SPONTANEOUS POTENTIAL
mV

→ | ← 20

GAMMA RAY
API UNITS

200 400
0 200

SHALLOW FOCUSED RESISTIVITY
OHMM

0.0 500.0
0.0 50.0

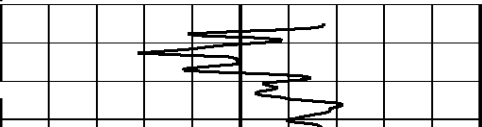
DEEP INDUCTION
OHMM

0.0 500.0
0.0 50.0

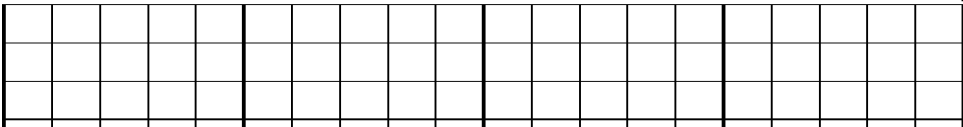
DEEP CONDUCTIVITY
MMHO

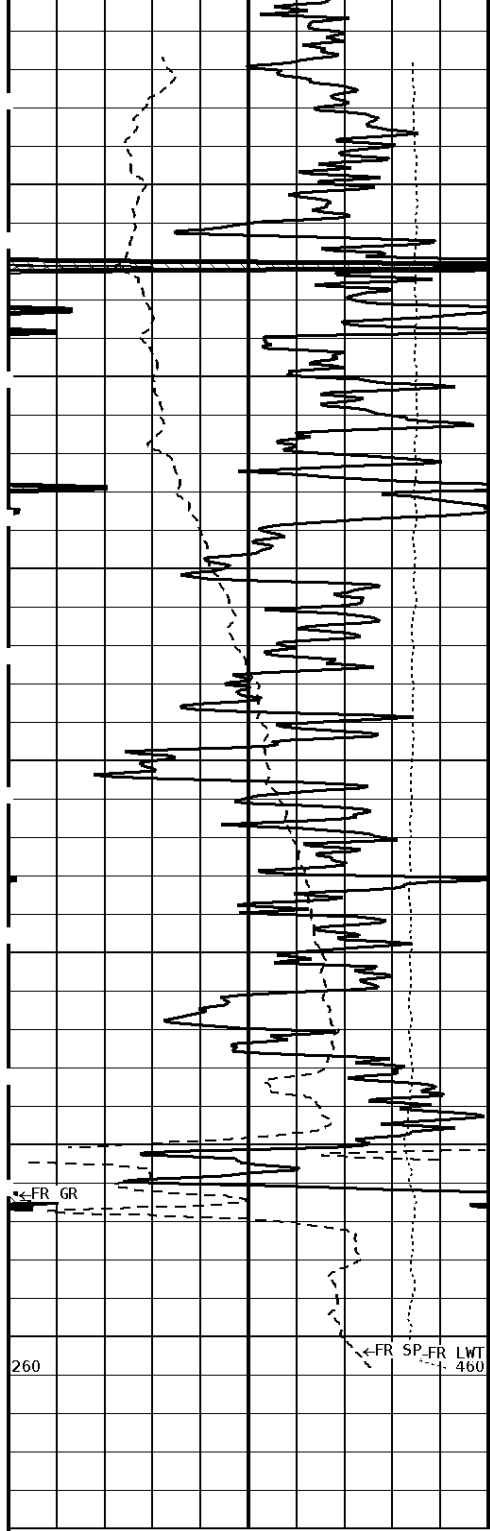
2000 1000 1000 0

1:600 SECTION

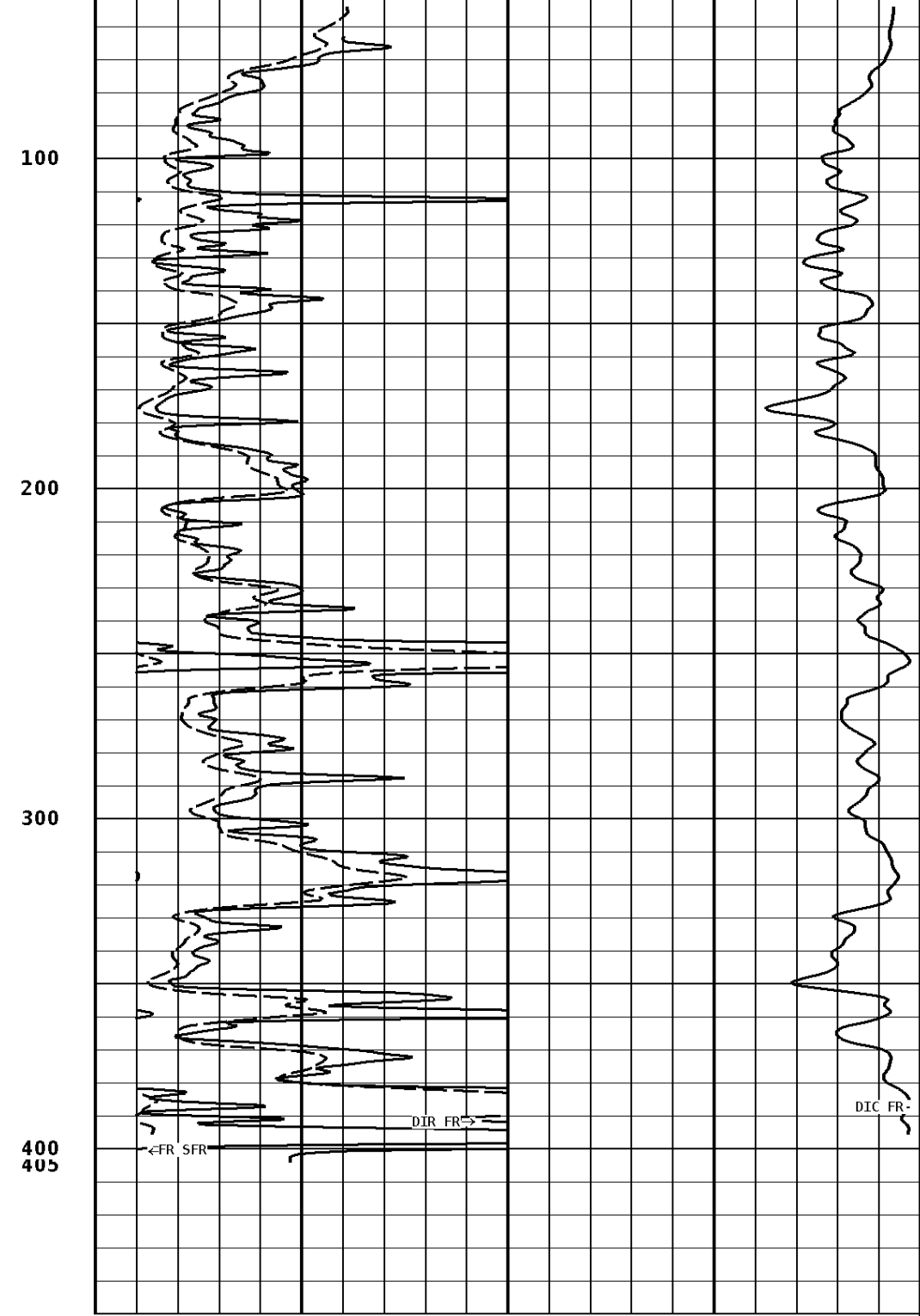


File #1.1.1

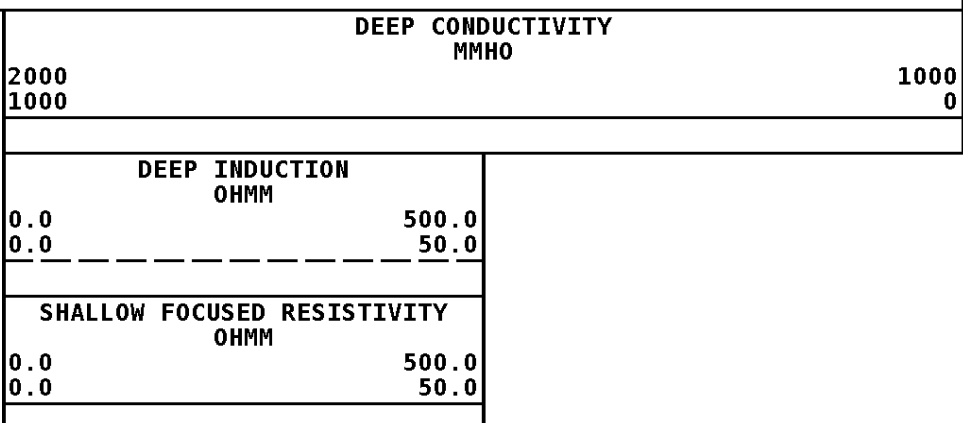
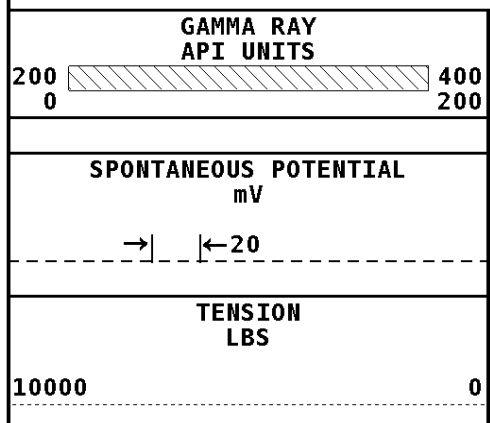




File #1.1.4



1:600 SECTION



Well File: run_sha 3-4-25t_jul 27_stk

Scale: 1:240

Segment: V1.D1.S4 MAIN

Acquired: 2011-07/27 10:09 3.2.0-9963

Reference: 0

Processed: 2011-07/27 11:22 3.2.0-9963

TENSION
LBS

10000 0

SHALLOW FOCUSED RESISTIVITY
OHMM

0.2 2000.0

SPONTANEOUS POTENTIAL
mV

→ | ← 20

MEDIUM INDUCTION
OHMM

0.2 2000.0

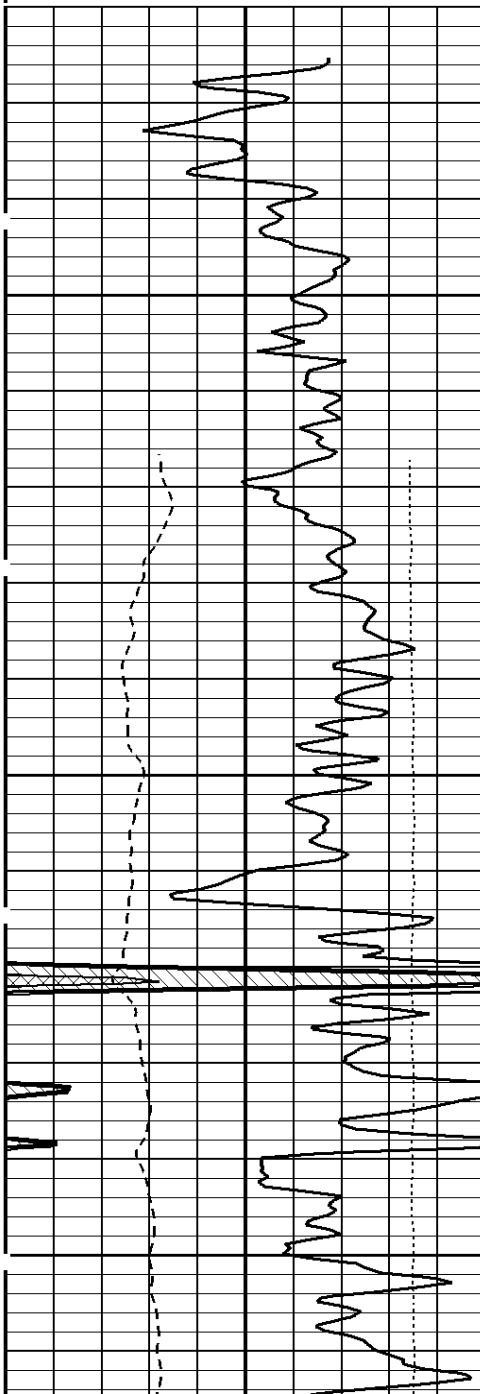
GAMMA RAY
API UNITS

200 0 400 200

DEEP INDUCTION
OHMM

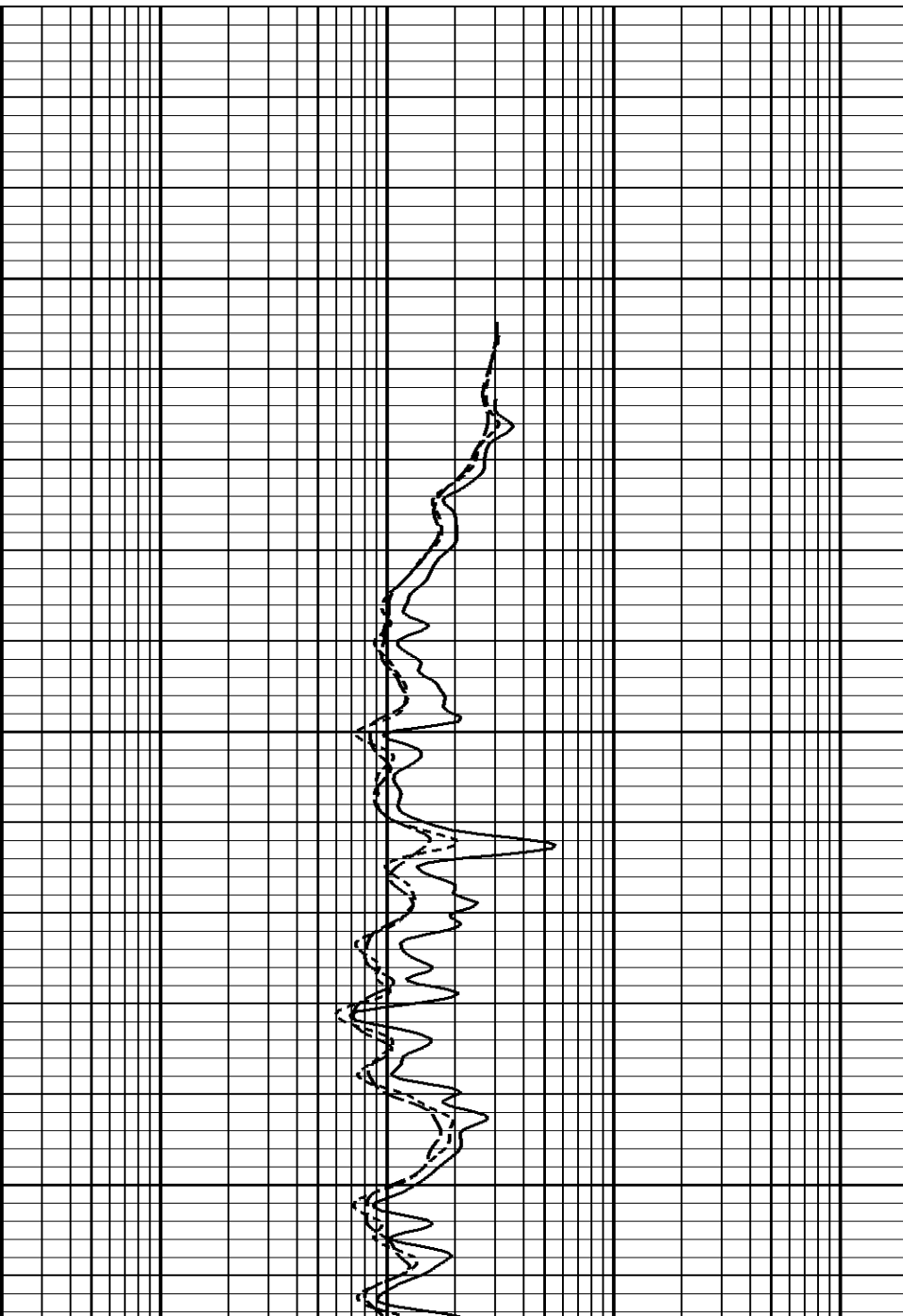
0.2 2000.0

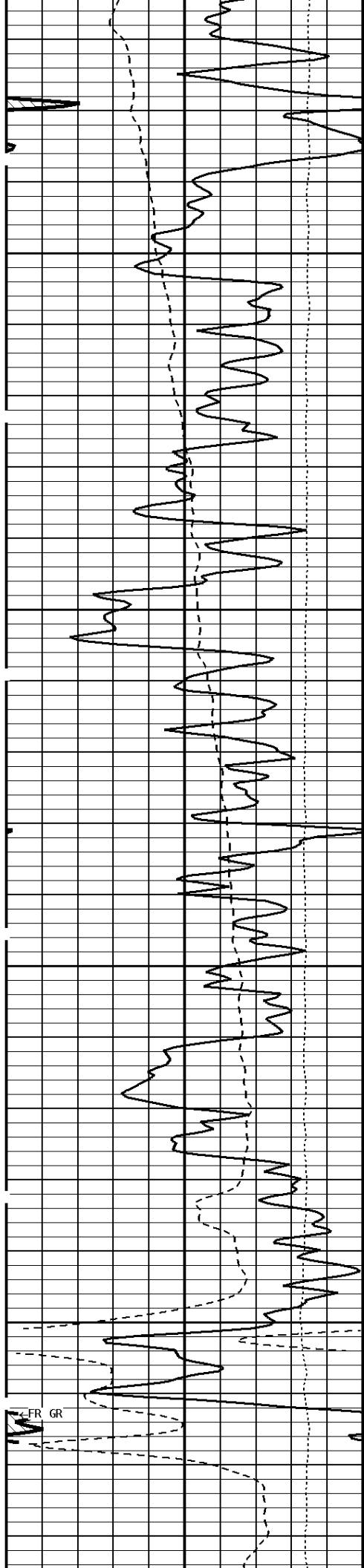
1:240 MAIN SECTION



File #1.1.4

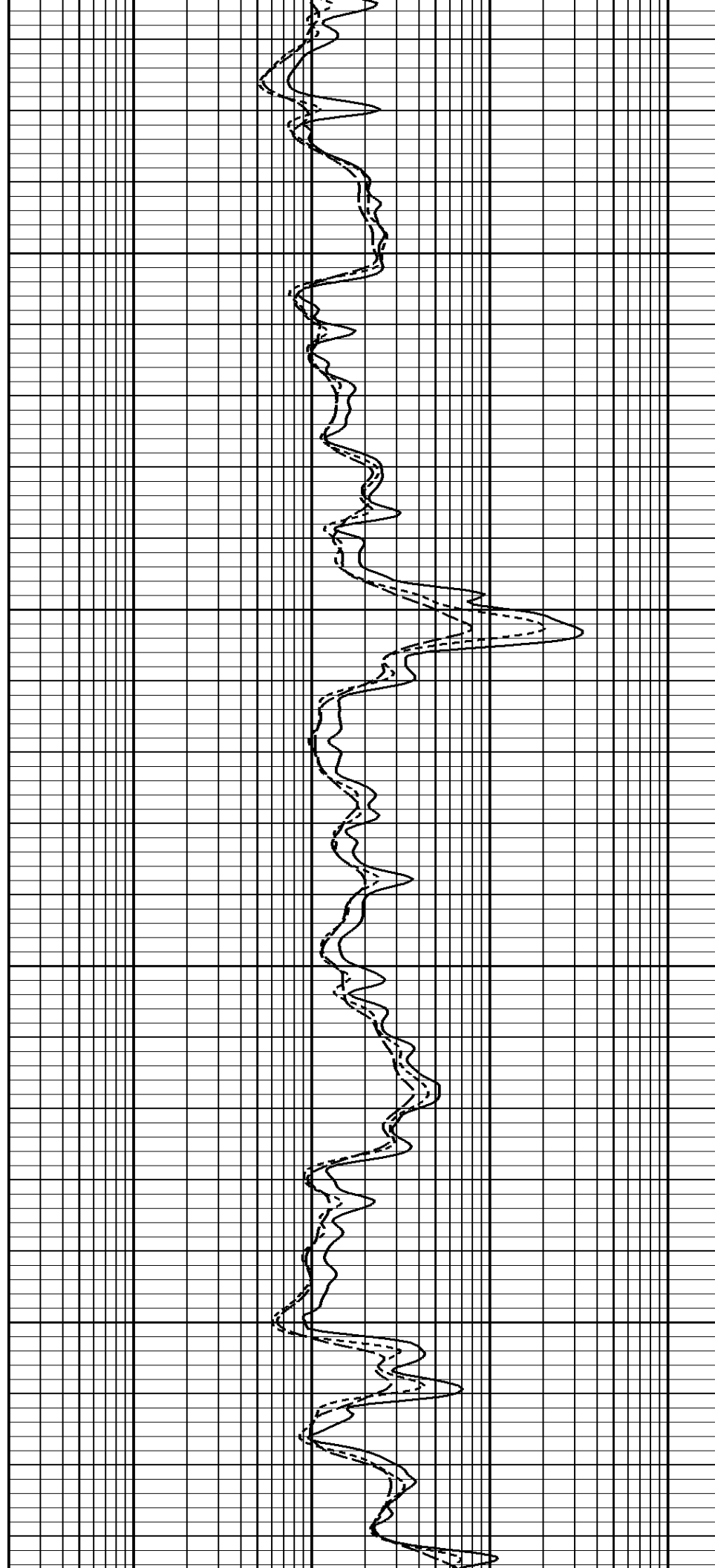
100



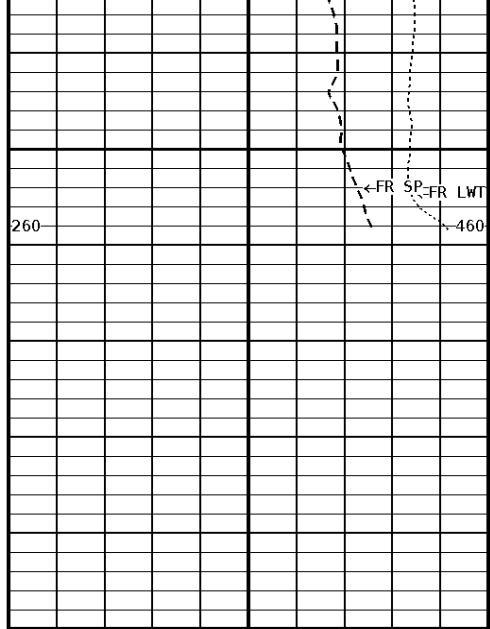


200

300

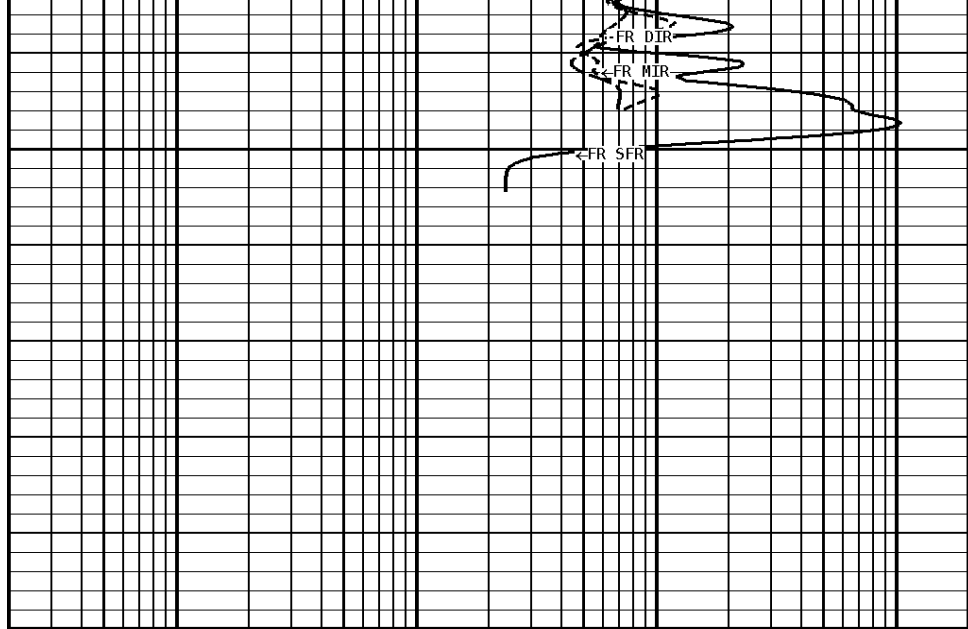


FR GR

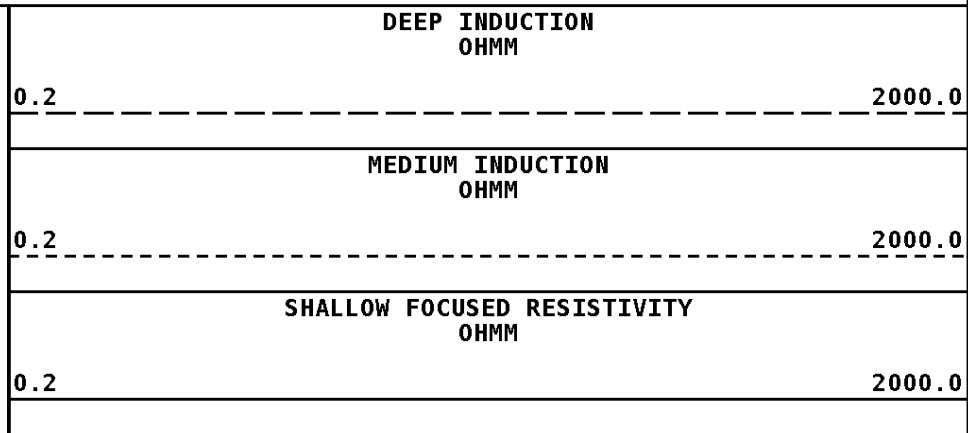
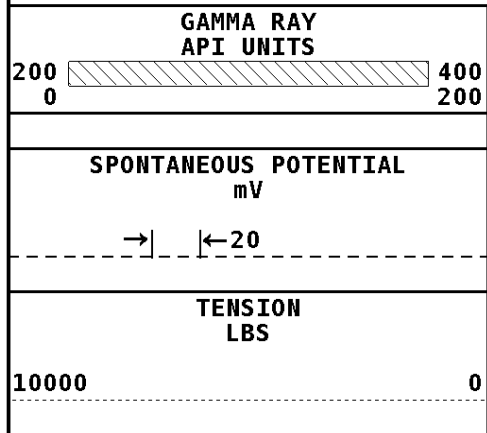


400
405

File #1.1.4



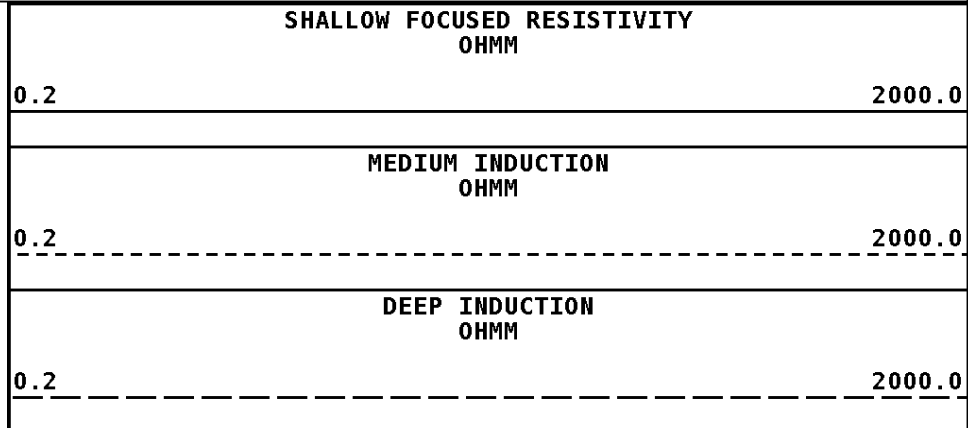
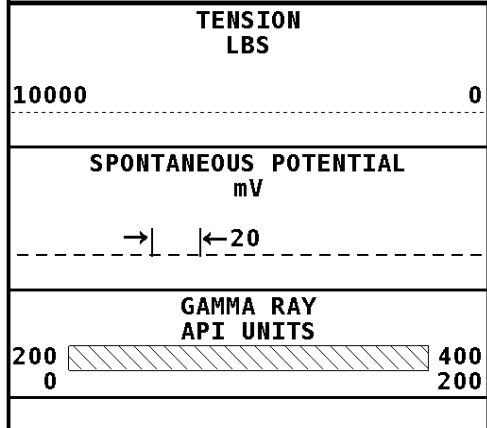
1:240 MAIN SECTION



*** Borehole Zone Factors ***

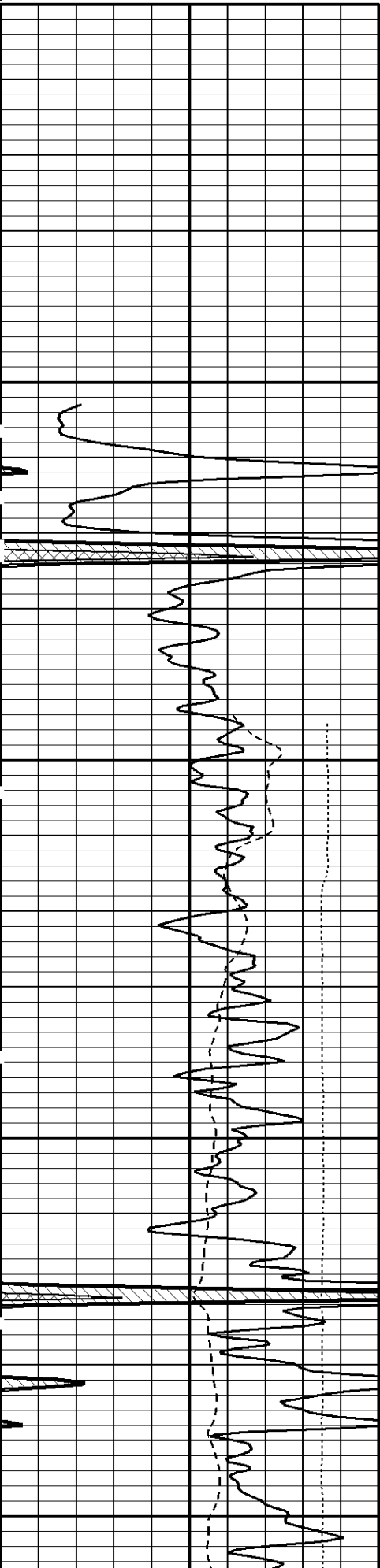
Zone 1		99999.0 to 0.0 Feet	
Drill Bit Size	_____	5.625	in
BHT Depth	_____	405.000	ft
Borehole Temperature	_____	73.0	degF
Temperature Gradient	_____	1.00	DFHF
Resistivity Of Mud	_____	0.200	ohm/m
Resistivity Of Mud Temperature	_____	90.00	degF

Well File: run sha 3-4-25t_jul_27_stk Scale: 1:240
 Segment: V1.D1.S5 REPEAT Acquired: 2011-07/27 10:28 3.2.0-9963
 Reference: 0 Processed: 2011-07/27 11:22 3.2.0-9963



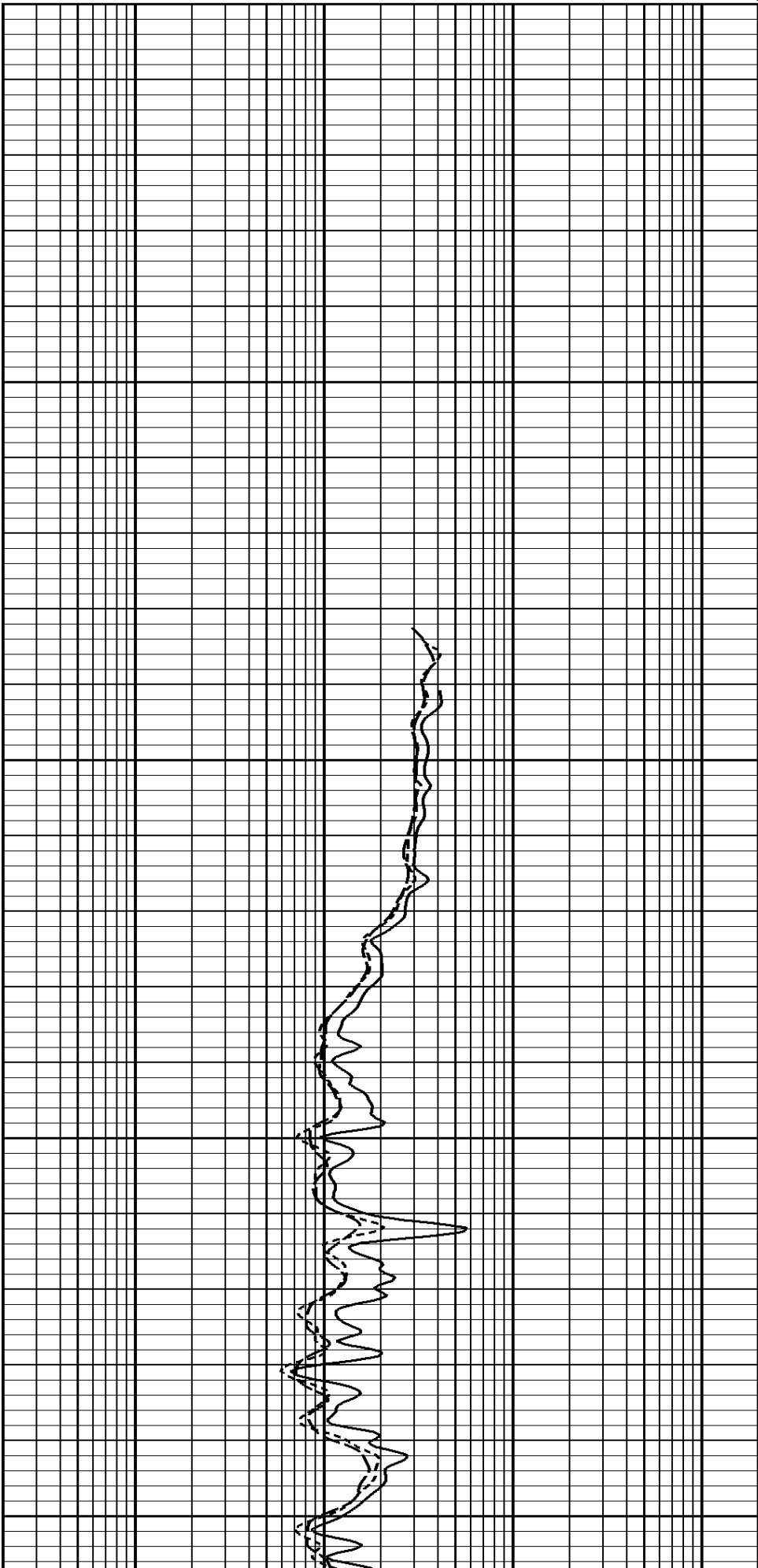
1:240 REPEAT SECTION

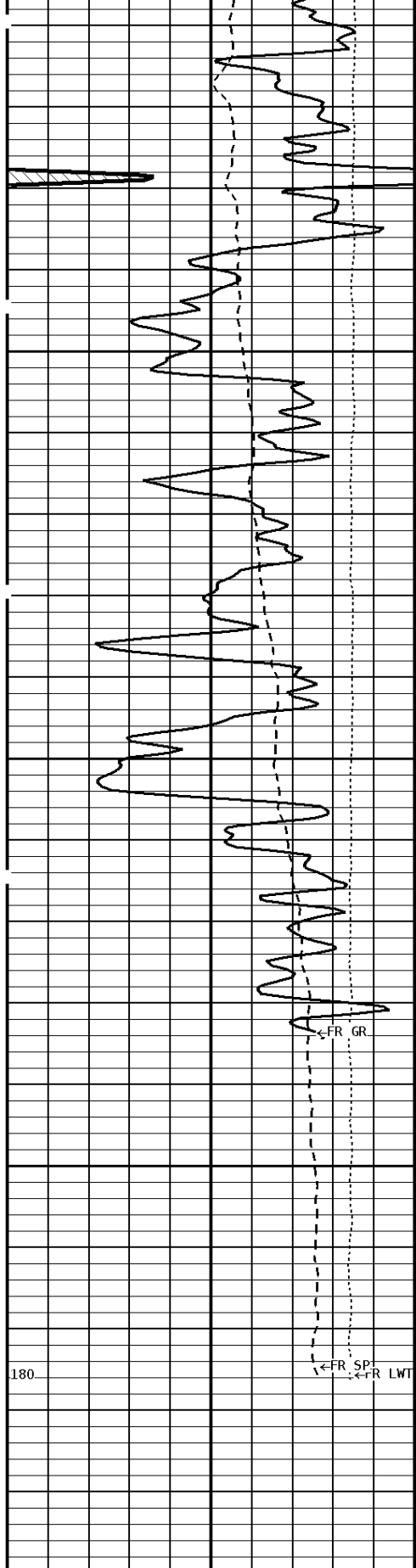
File #1.1.5



000

100



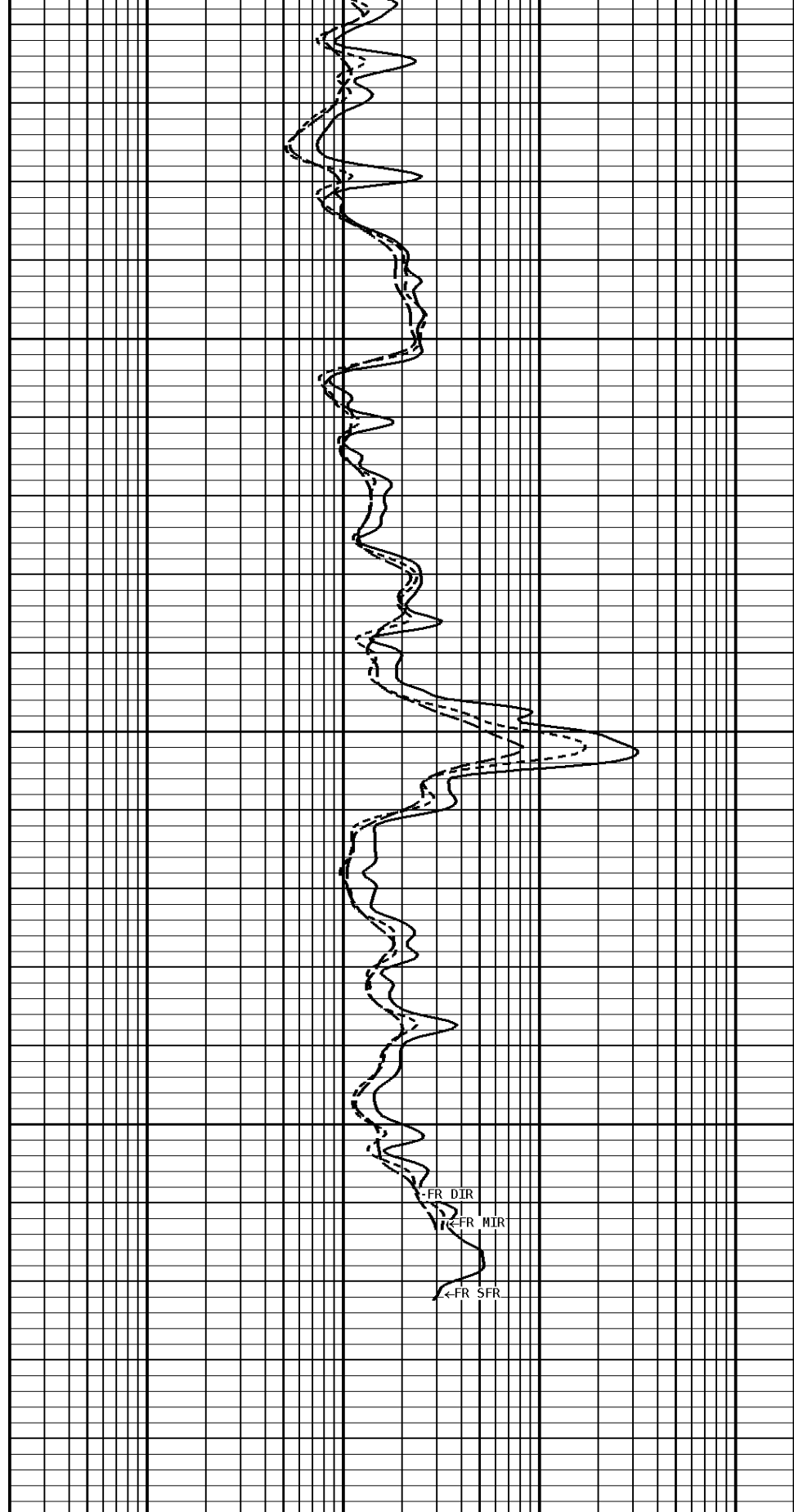


File #1.1.5

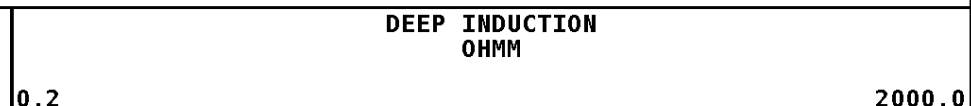
200

300

326



1:240 REPEAT SECTION



SPONTANEOUS POTENTIAL mV	
→	←20
TENSION LBS	
10000	0

MEDIUM INDUCTION OHMM	
0.2	2000.0
SHALLOW FOCUSED RESISTIVITY OHMM	
0.2	2000.0

*** Borehole Zone Factors ***

Zone 1	99999.0	to	0.0	Feet
Drill Bit Size			5.625	in
BHT Depth			405.000	ft
Borehole Temperature			73.0	degF
Temperature Gradient			1.00	DFHF
Resistivity Of Mud			0.200	ohm/m
Resistivity Of Mud Temperature			90.00	degF

*** Calibration Summary ***

Shop Calibration GRT-B					
Performed : 29-Apr-2010			Time : 11:02		
Sensor Suite : GR-GR5			ID : GRT-BC-41		
	Measured	Units	Calibrated	Units	
GR	Background	Jig	Jig	GRAPI	
	46	346	175		

Shop Calibration PIT-CA					
Performed : 28-APR-2011			Time : 06:57		
Sensor Suite : P-IND-T			ID : PIT-CA-069		
Medium					
	Measured		Calibrated		Units
	R	X	R	X	
Air	130173	131162	-0.0	-0.0	MMHOS
Zero	131069	131068	42.3	-8.2	MMHOS
Reference	249132	248386	5042.3	4991.8	MMHOS
Loop	128928	218725	3679.1	3784.6	MMHOS
Sonde Error			0.1	-8.5	MMHOS
Cond			5042.3	4991.8	MMHOS
Deep					
	Measured		Calibrated		Units
	R	X	R	X	
Air	128071	132145	0.0	0.0	MMHOS
Zero	131066	131068	56.5	-22.2	MMHOS
Reference	234699	233671	2056.5	1977.8	MMHOS
Loop	127048	223014	1751.5	1791.0	MMHOS
Sonde Error			-2.6	0.1	MMHOS
Cond			2056.5	1977.8	MMHOS
Temperature					
	Measured		Calibrated		Units
	Low	High	Low	High	
	16980.0	56920.0	70.0	350.0	DEGF

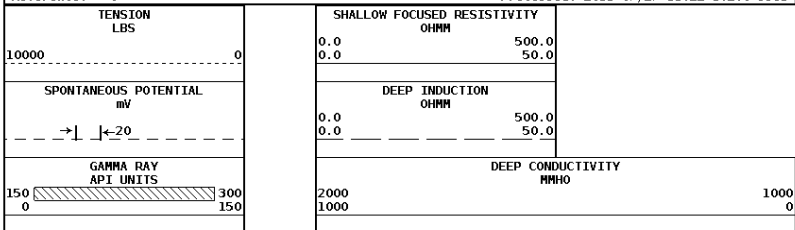
Performed : 28-Apr-2011			Time : 12:54		
Sensor Suite : SFL			ID : PIT-CA-069		
Internal					
	Measured		Calibrated		Units
	Zero	Reference	Zero	Reference	
Im	32786.2	49071.6	0.0	7028.0	uA
Ib	32768.9	49102.0	0.0	1750.0	mA
MOM1	32796.9	56691.2	0.0	175.0	mV
Equivalent SFL				43.97	OHMM

Performed : 28-Apr-2011			Time : 12:57		
Sensor Suite : P-SP			ID : PIT-CA-069		
Internal					
	Measured		Calibrated		Units

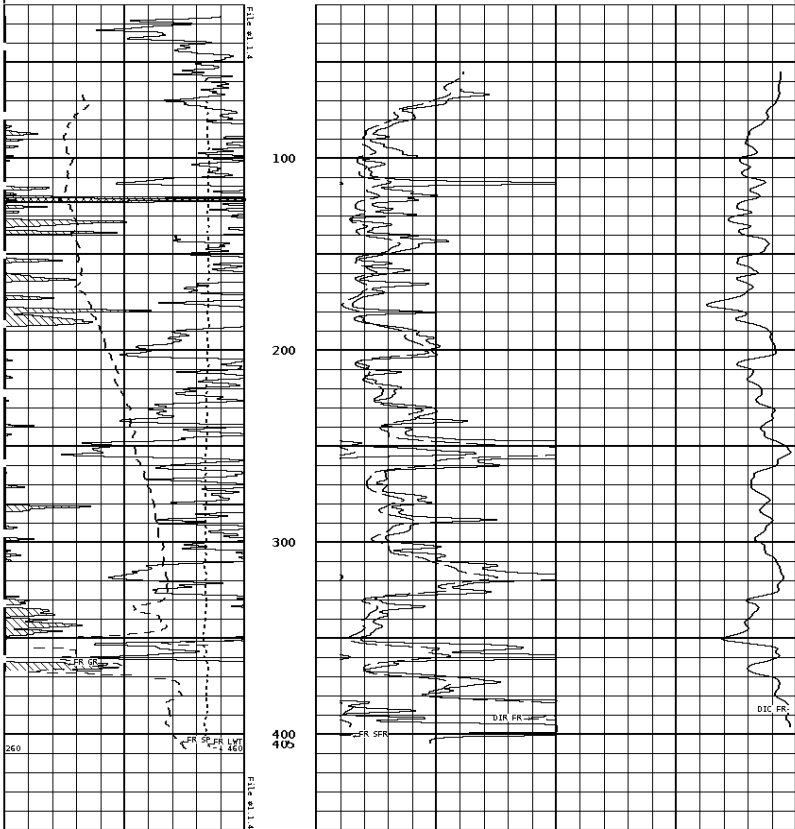
Zero Reference
32768.3 58943.9

Zero Reference Units
0.0 1000.0 mV

Well File: run_sha_3-4-25t_jul_27_stk Scale: 1:600
Segment: V1.D1.54 MAIN Acquired: 2011-07-27 10:09 3.2.0-9963
Reference: 0 Processed: 2011-07-27 11:22 3.2.0-9963



1:1200 SECTION



1:1200 SECTION

