



**MIDWEST SURVEYS**  
 LOGGING - PERFORATING - CONSULTING SERVICES  
 P.O. Box 68, Ossawatimie, KS 66064  
 913 / 755 - 2128

**GAMMA RAY / NEUTRON / CCL**

File No.

Company **TDR Construction, Inc.**

Well **Duffy No. 1-W1**

Field **Paola - Rantoul**

County **Franklin** State **Kansas**

Location **2310' FSL & 2930' FEL**

Other Services **Perforate**

Sec. **32** Type **15s** Rge. **21e**

Perforation Datum **GL** Elevation **1024'**

Log Measured From **GL** K.B. **NA**

Drilling Measured From **GL** D.F. **NA**

Date **10-26-2013** Elevation **GL 1024'**

Run Number **One**

Depth Driller **840.0**

Depth Logger **791.2**

Bottom Logged Interval **790.2**

Top Log Interval **20.0**

Fluid Level **Full**

Type Fluid **Water**

Density / Viscosity **NA**

Salinity - PPM Cl **NA**

Max. Recorded Temp **NA**

Estimated Cement Top **0.0**

Equipment No. **107** Location **Ossawatimie**

Recorded By **Steve Windisch**

Witnessed By **Lance Town**

BOREHOLE RECORD				CASINGS RECORD			
RUN No.	BIT	FROM	TO	SIZE	WGT.	FROM	TO
One	9.875"	0.0	21.0	7.00"	17.0 #	0.0	21.0
Two	5.625"	21.0	840.0	2.875"	6.5 #	0.0	821.75
				Bottom	Set	At	793.45

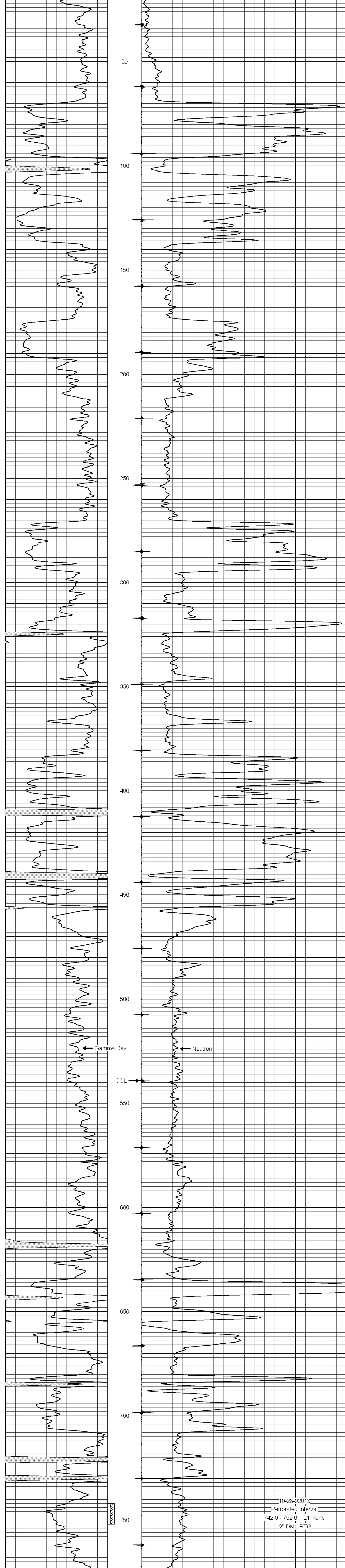
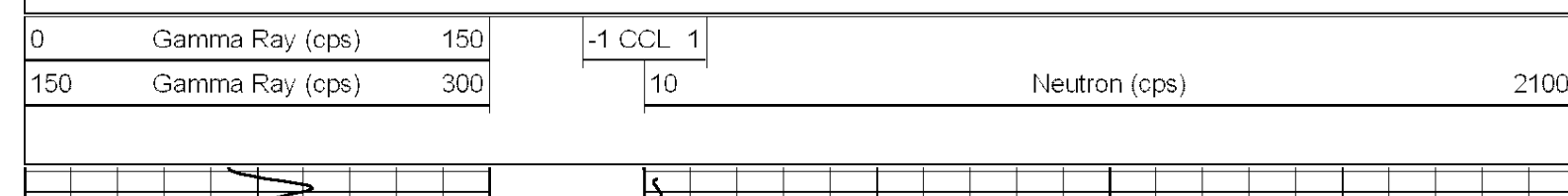
<<< Fold Here >>>

All interpretations are opinions based on inferences from electrical or other measurements and we cannot and do not guarantee the accuracy or correctness of any interpretation, and we shall not, except in the case of gross or willful negligence on our part, be liable or responsible for any loss, costs, damages, or expenses incurred or sustained by anyone resulting from any interpretation made by any of our officers, agents or employees. These interpretations are also subject to our general terms and conditions set out in our current Price Schedule.

Comments

Drilling Contractor :  
 Town Oilfield Services, Inc

Database File: duffy1wi.db  
 Dataset Pathname: pass1  
 Presentation Format: gr-n-ccl  
 Dataset Creation: Sat Oct 26 11:09:41 2013 by Log SCH 111116  
 Charted by: Depth in Feet scaled 1:240



10-28-2013  
 Perforated Interval  
 742.0 - 752.0 21 Perfs.  
 2" DML RTG.

