



Pioneer Energy Services

Dual Induction Log

15-073-24192-00-00

API No.

Company **Bear Petroleum, LLC**
 Well **Lewis C #4**
 Field **Unknown**
 County **Greenwood State** **Kansas**

Location **2970' FSL & 2310' FEL**

Sec: **25** Twp: **27S** Rge: **8E**

Other Services
 CNL/CDL
 MEL

Permanent Datum **Ground Level** Elevation **1417**
 Log Measured From **Kelly Bushing** **6** Ft. Above Perm. Datum
 Drilling Measured From **Kelly Bushing**

Elevation
 K.B. 1423
 D.F.
 G.L. 1417

Date	9/7/2013	
Run Number	One	
Depth Driller	2800	
Depth Logger	2799	
Bottom Logged Interval	2798	
Top Log Interval	50	
Casing Driller	8.625 @ 84	
Casing Logger	92	
Bit Size	7.875	
Type Fluid in Hole	Chemical	
Salinity, ppm CL	600	
Density / Viscosity	9.3 57	
pH / Fluid Loss	8.8 8.8	
Source of Sample	Flowline	
Rm @ Meas. Temp	1.20 @ 88	
Rmf @ Meas. Temp	0.90 @ 88	
Rmc @ Meas. Temp	1.62 @ 88	
Source of Rmf / Rmc	Charts	
Rm @ BHT	1.00 @ 106	
Operating Rig Time	4 Hours	
Max Rec. Temp. F	106	
Equipment Number	91	
Location	Hays	
Recorded By	D. Schmidt	
Witnessed By	Bill Stout	

<<< Fold Here >>>

All interpretations are opinions based on inferences from electrical or other measurements and we cannot and do not guarantee the accuracy or correctness of any interpretation, and we shall not, except in the case of gross or willful negligence on our part, be liable or responsible for any loss, costs, damages, or expenses incurred or sustained by anyone resulting from any interpretation made by any of our officers, agents or employees. These interpretations are also subject to our general terms and conditions set out in our current Price Schedule.

Comments

Thank you for using Pioneer Energy Services
 www.pioneer.com
 785 625 3858
 Beaumont,
 3 East, 1 North,
 North and East into

Database File: c:\warrior\data\bear pet_lewis c #4\bear_090713hd.db
 Dataset Pathname: dil/brstck
 Presentation Format: dil2in
 Dataset Creation: Sat Sep 07 16:05:43 2013
 Charted by: Depth in Feet scaled 1:600

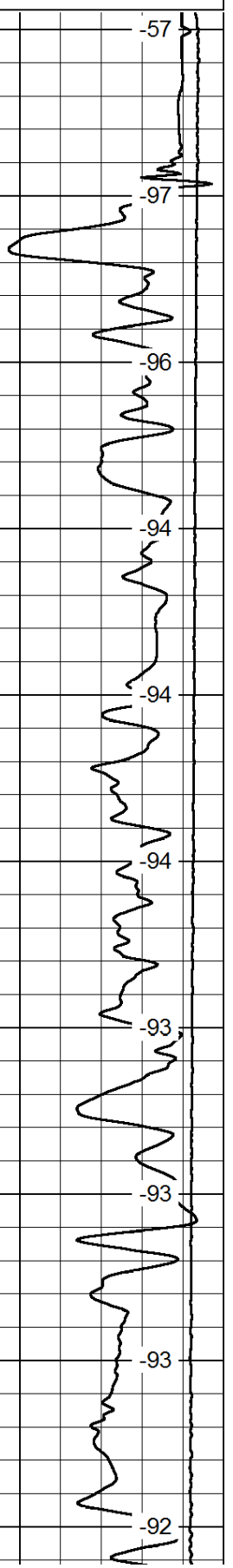
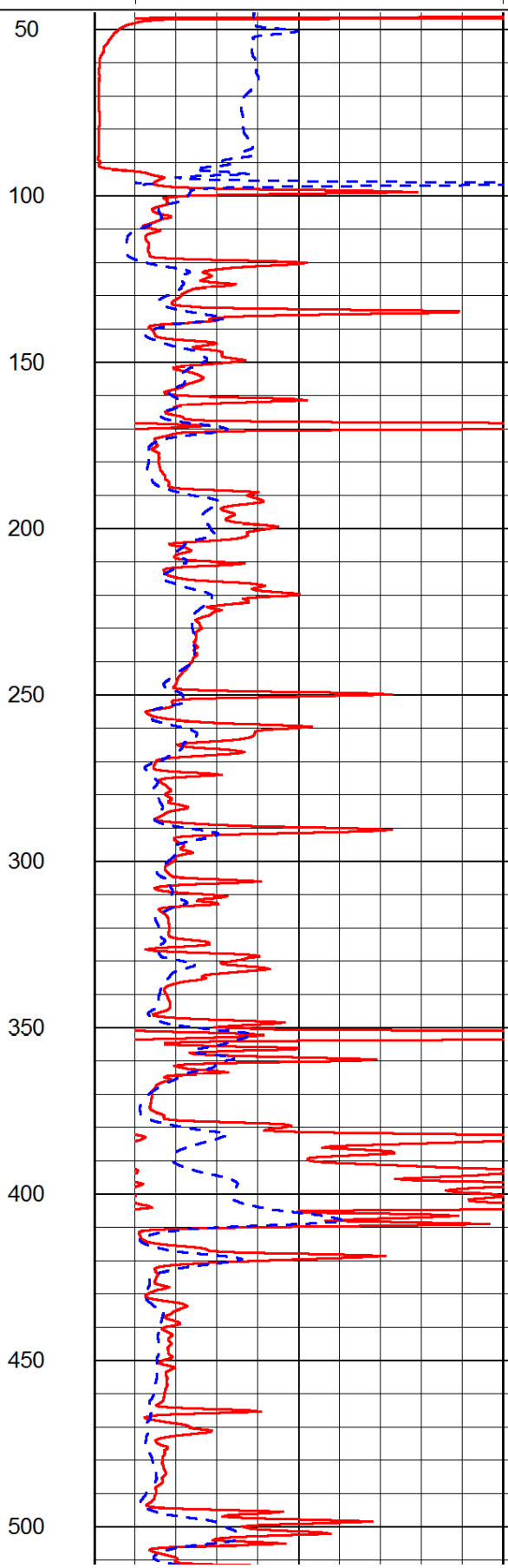
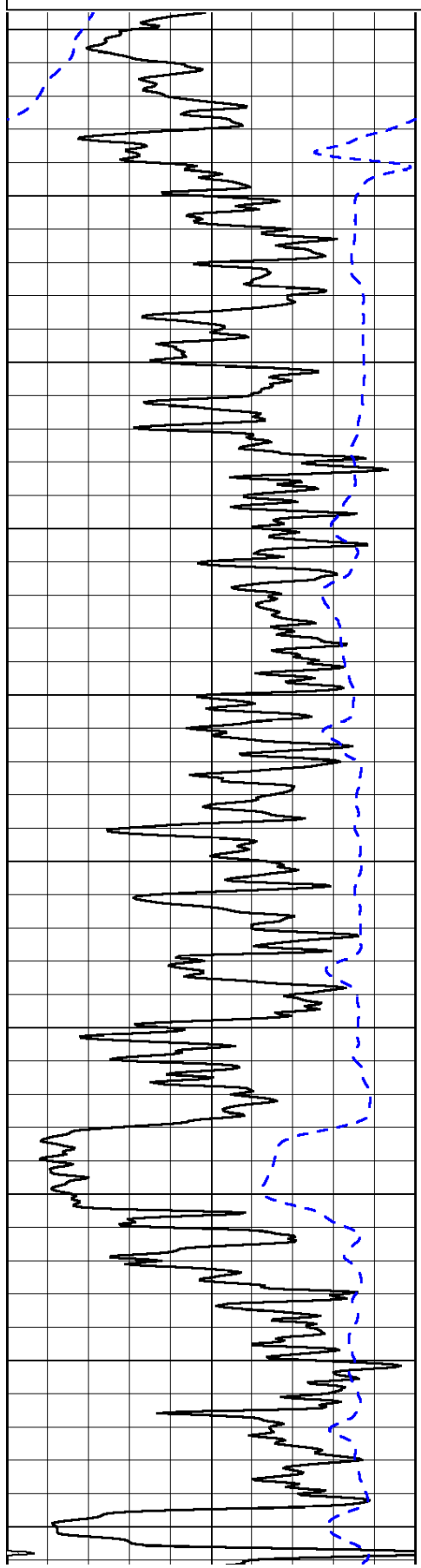
0	Gamma Ray	150
-200	SP (mV)	0

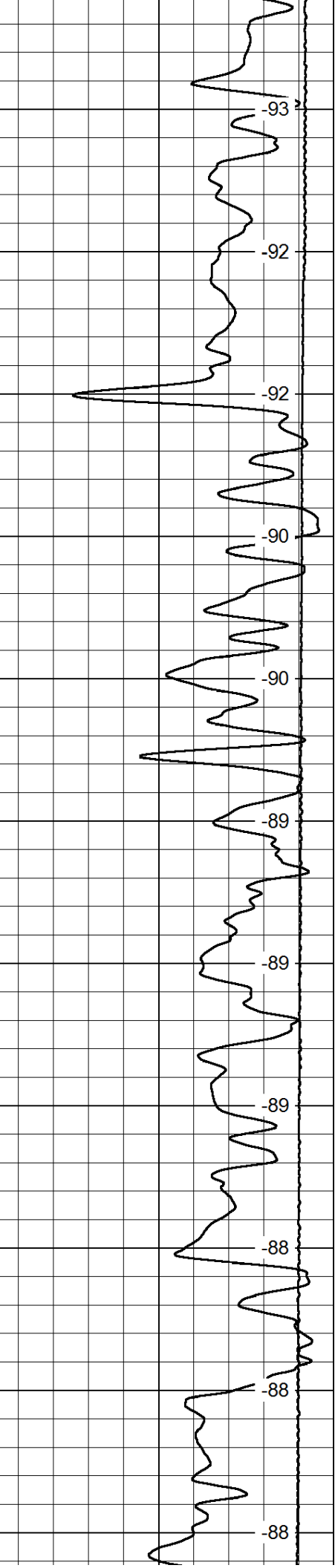
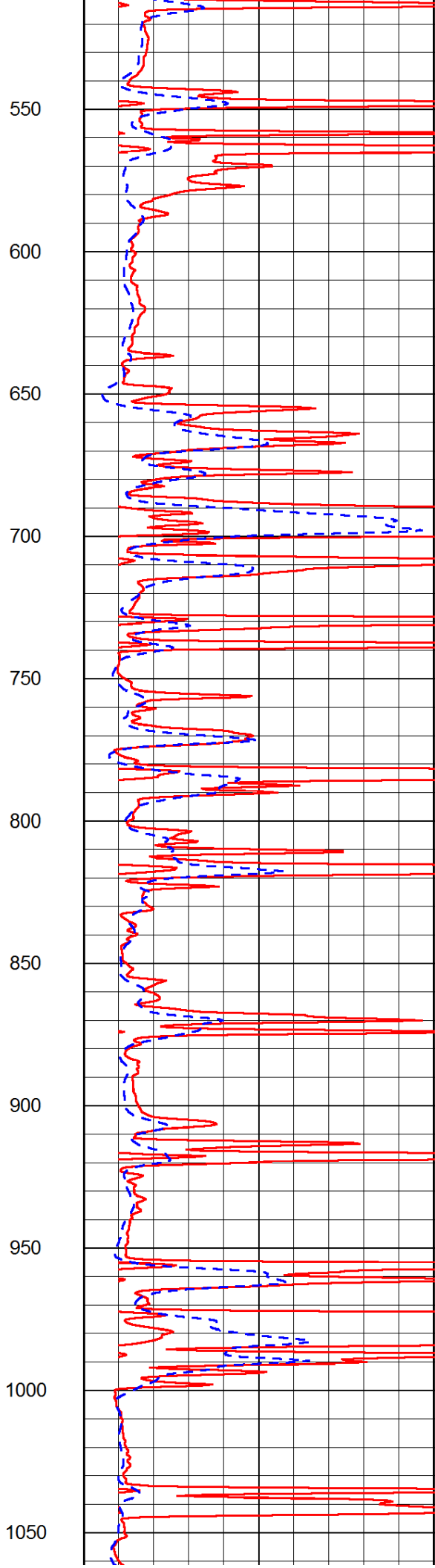
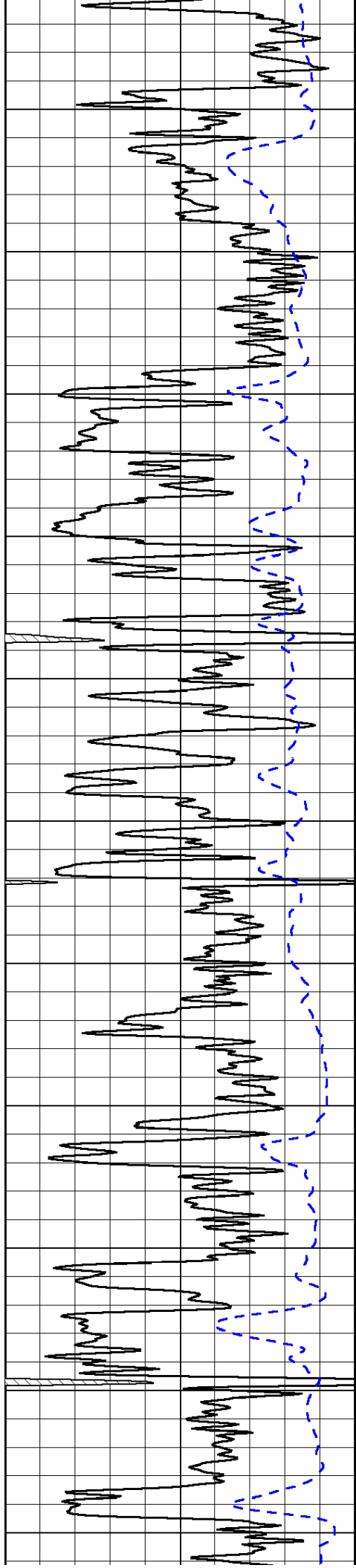
0	Shallow Resistivity	50
0	Deep Resistivity	50

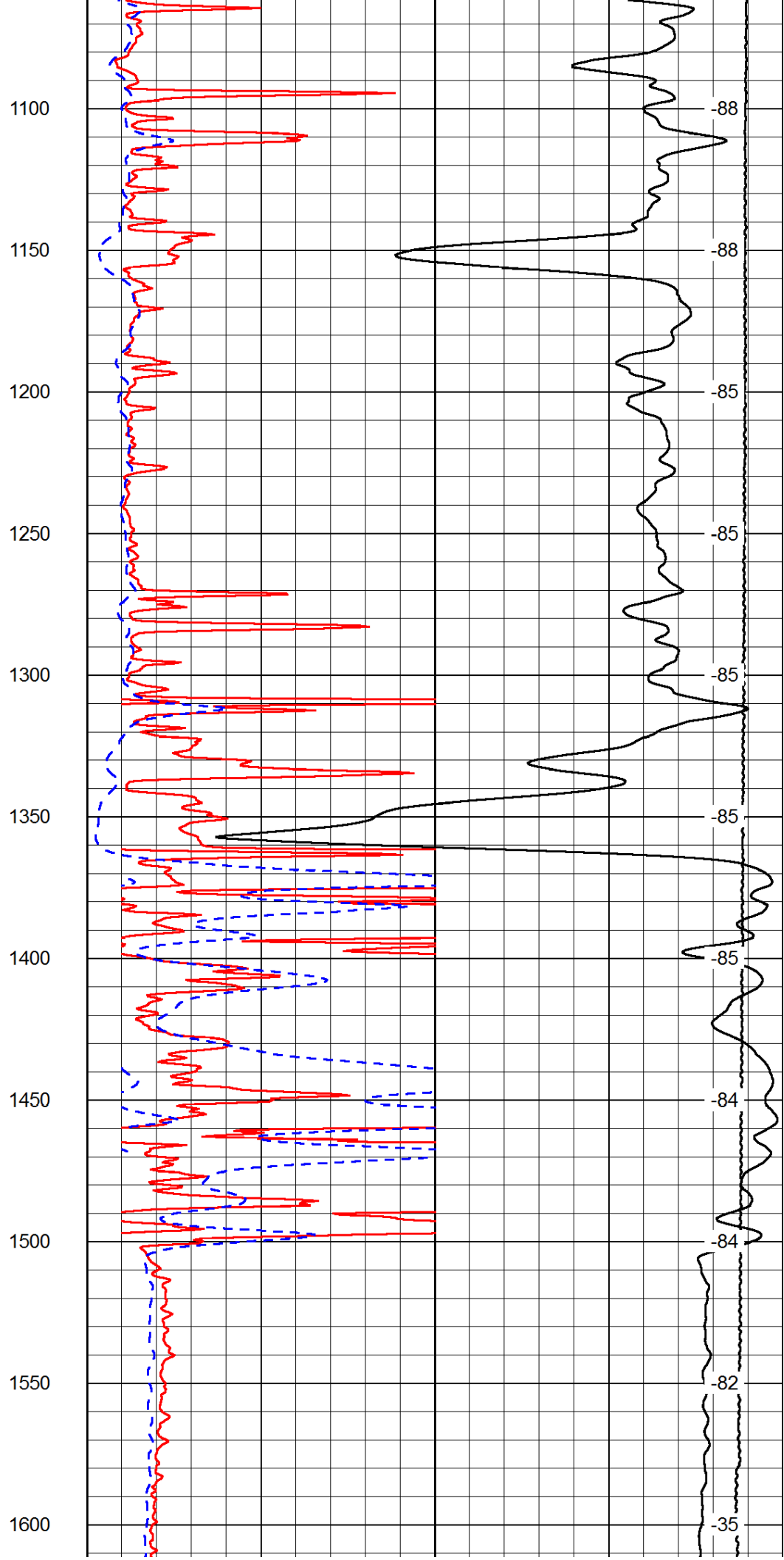
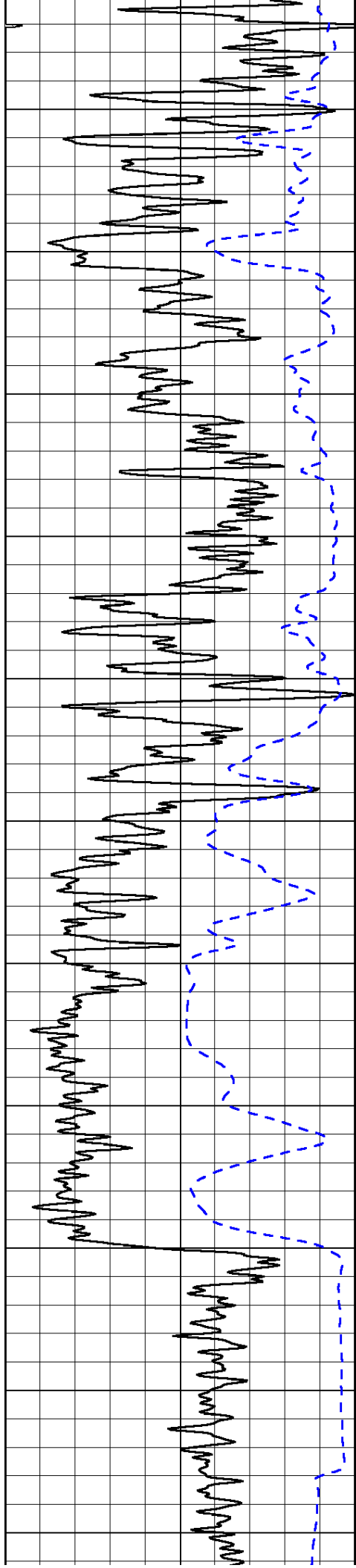
LSPD

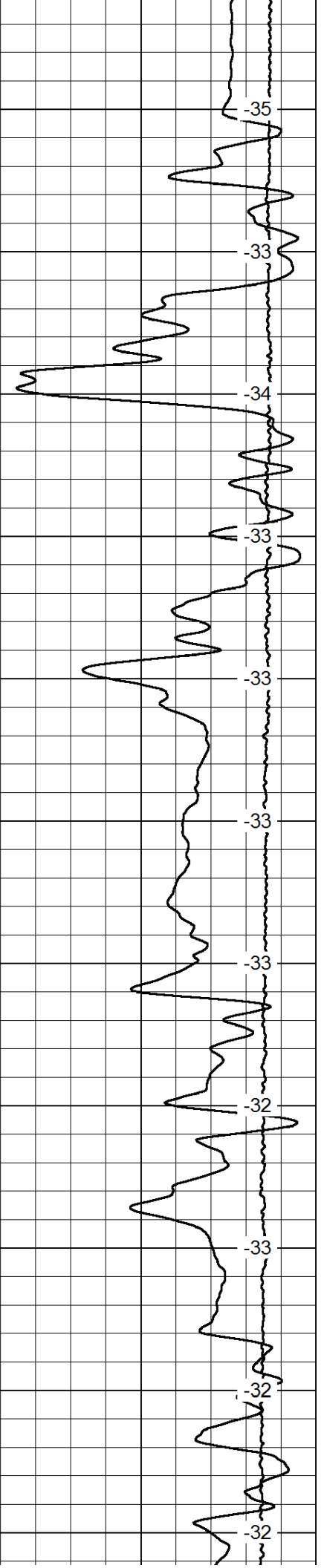
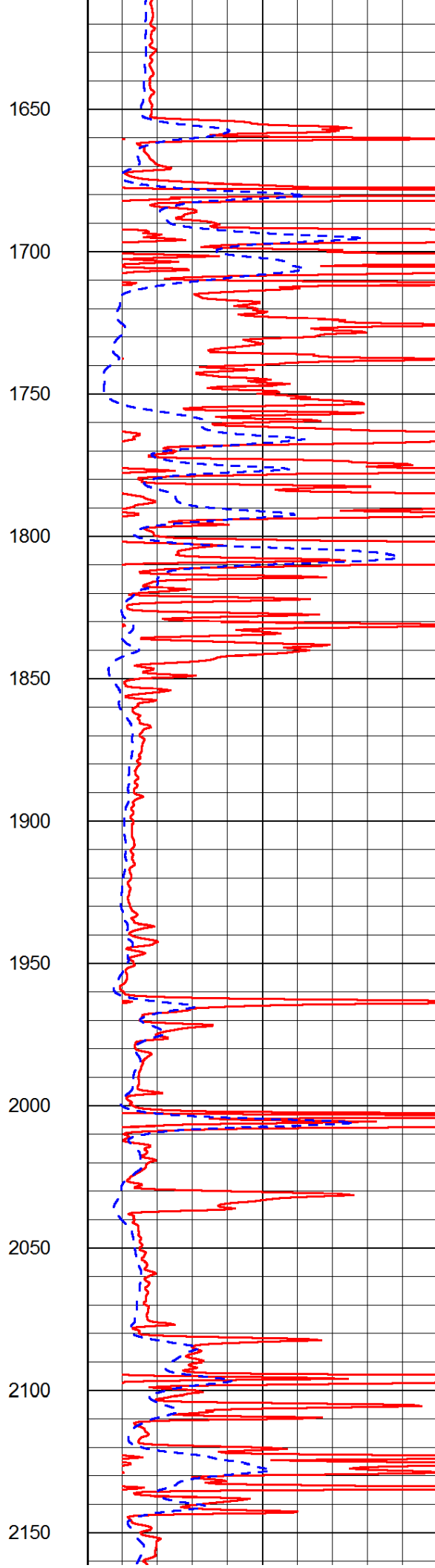
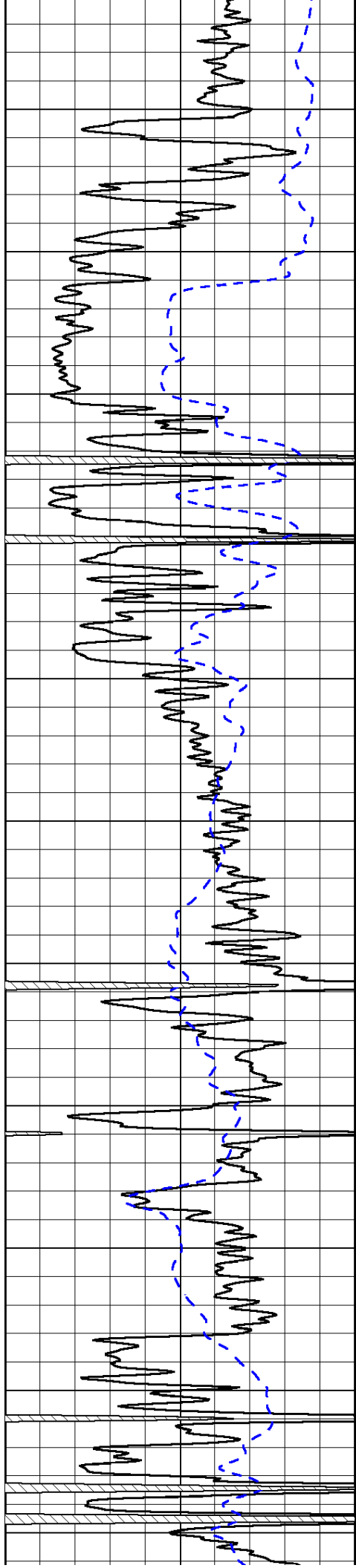
1000	Conductivity	0
15000	Line Tension	0

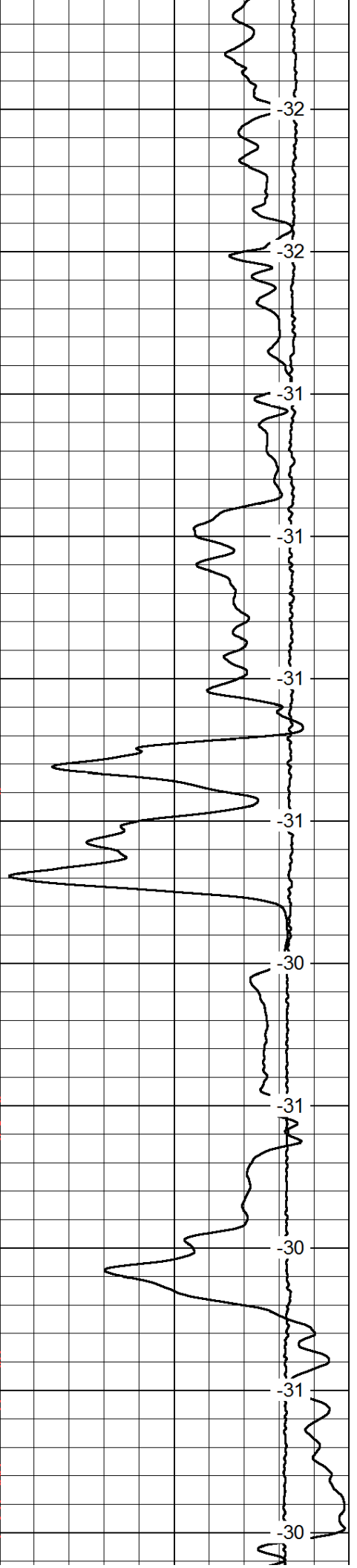
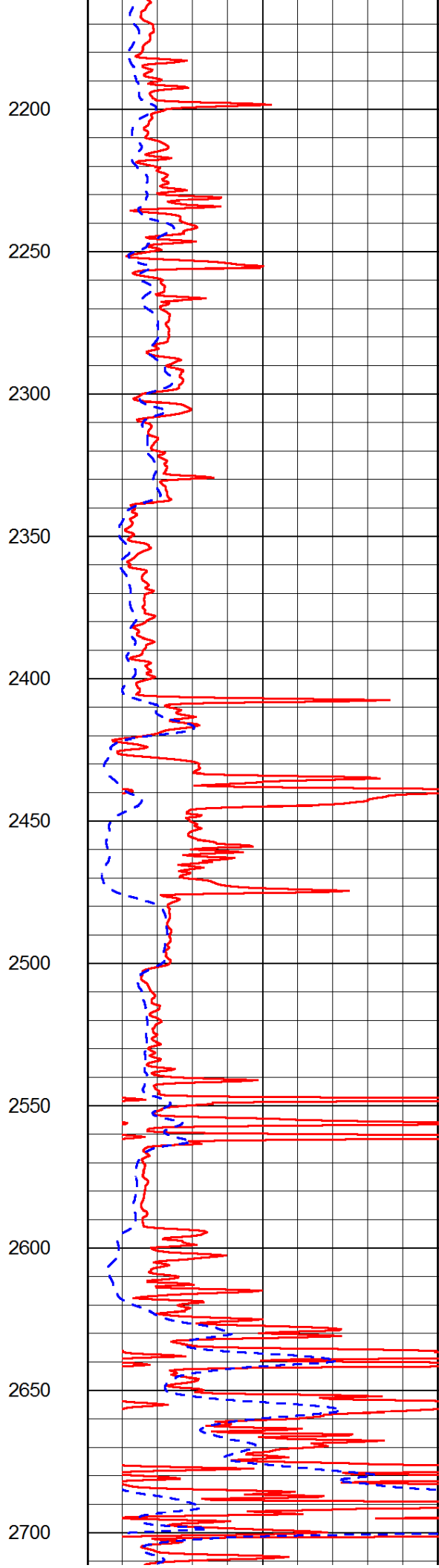
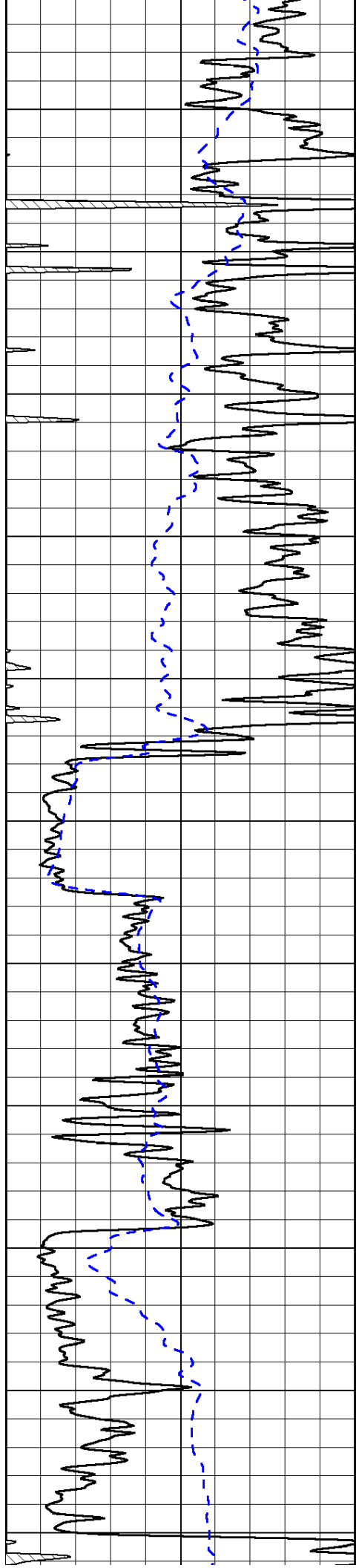
50	Shallow Resistivity	500
50	Deep Resistivity	500

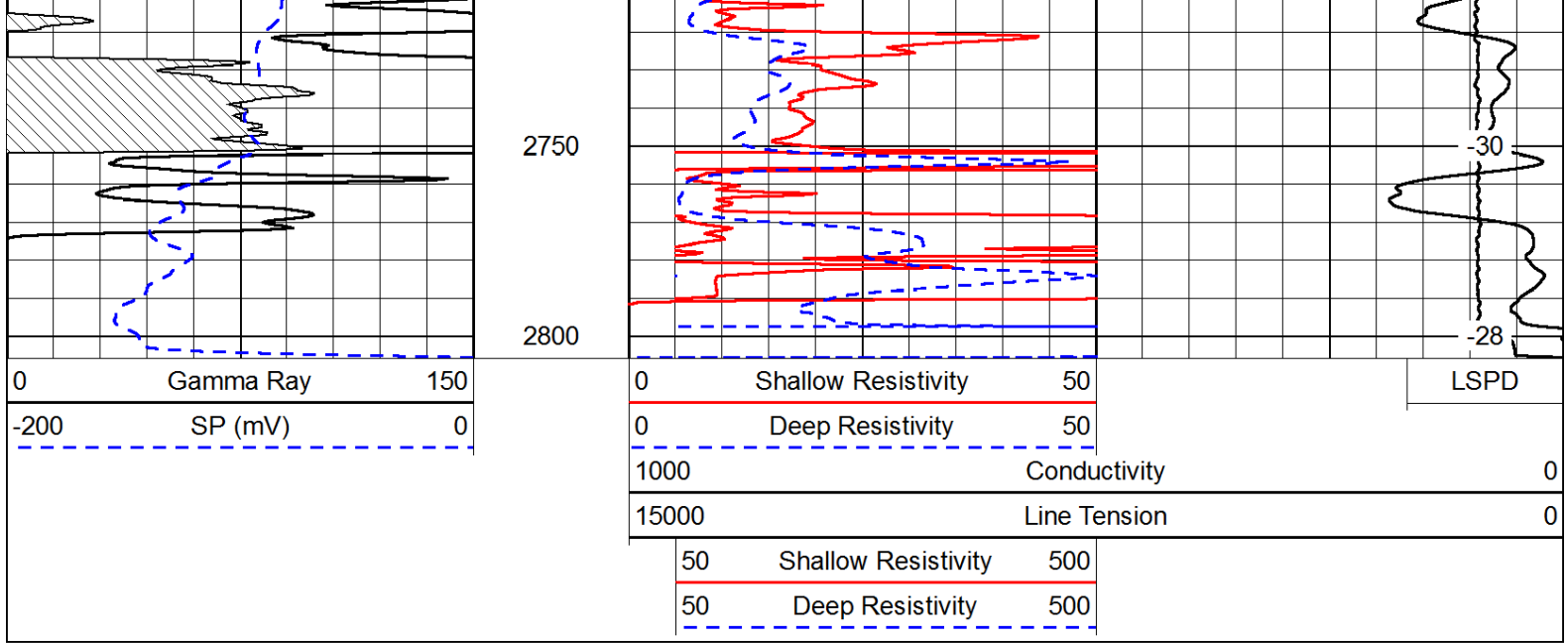




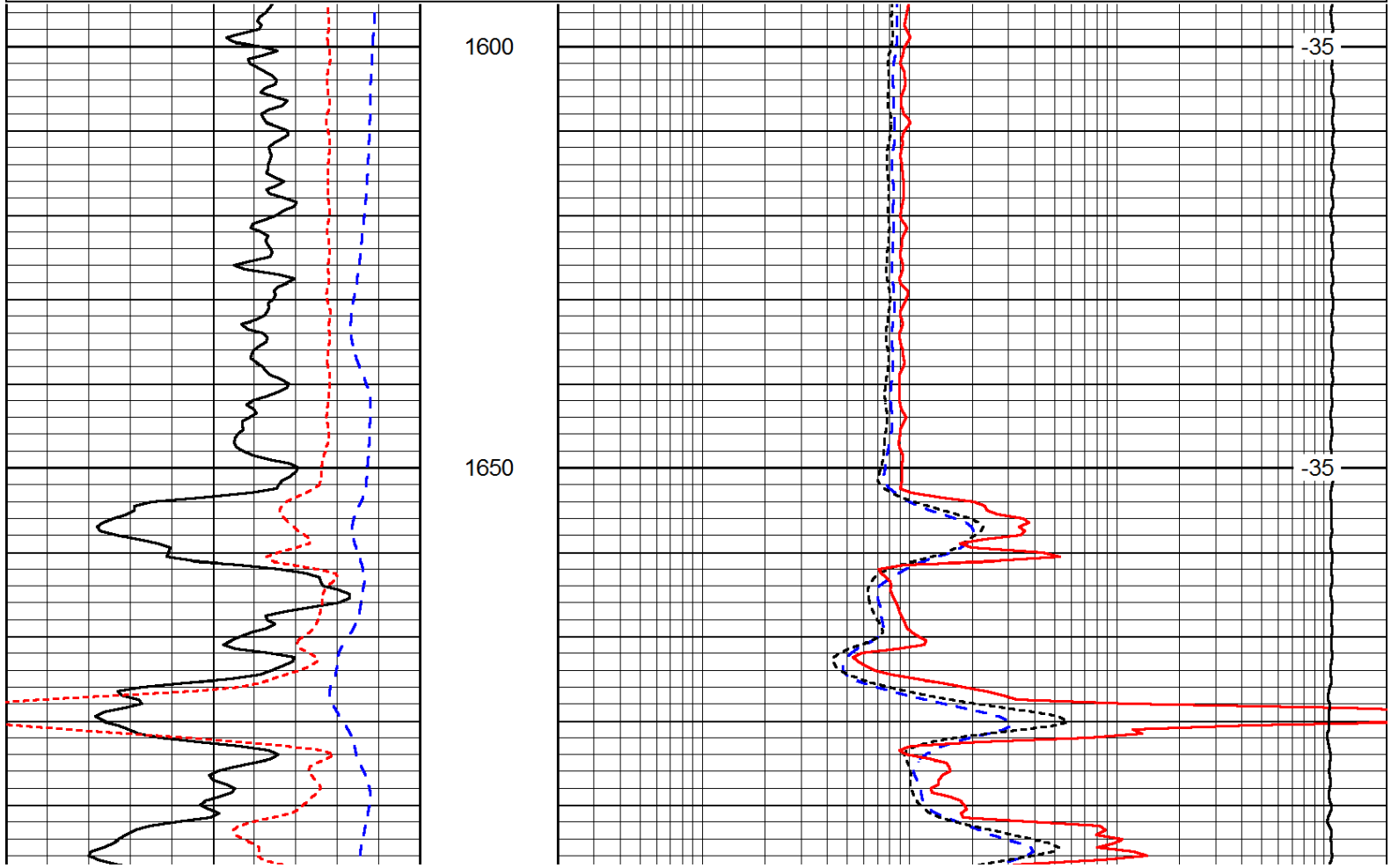
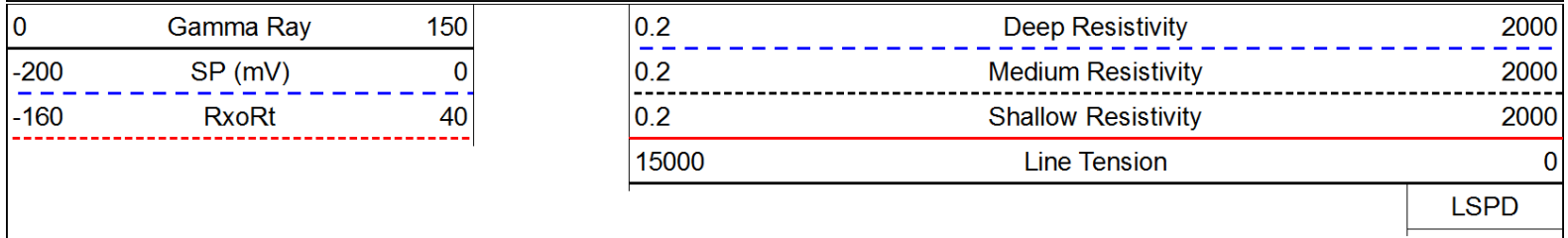


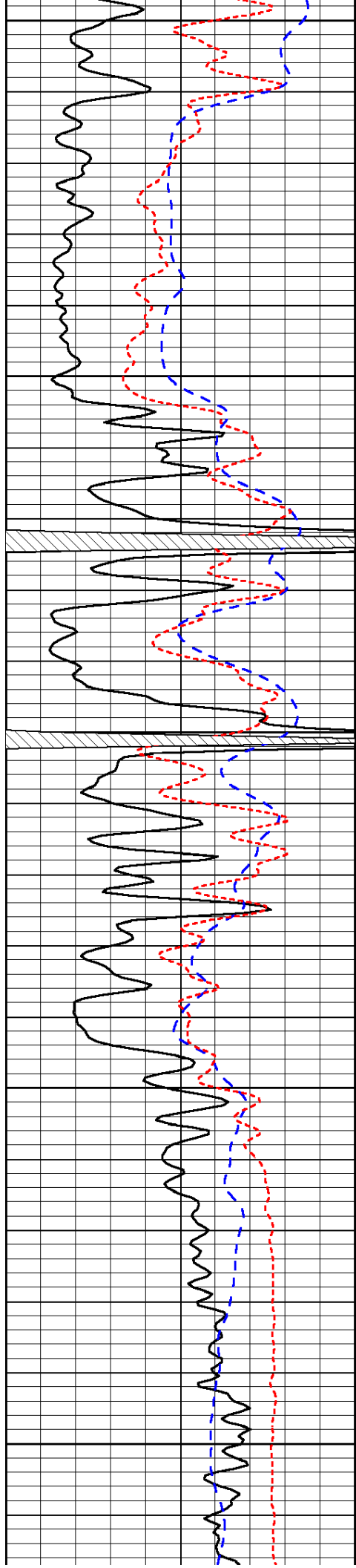






Database File: c:\warrior\data\bear pet_lewis c #4\bear_090713hd.db
 Dataset Pathname: dil/brstck
 Presentation Format: dil
 Dataset Creation: Sat Sep 07 16:05:43 2013
 Charted by: Depth in Feet scaled 1:240





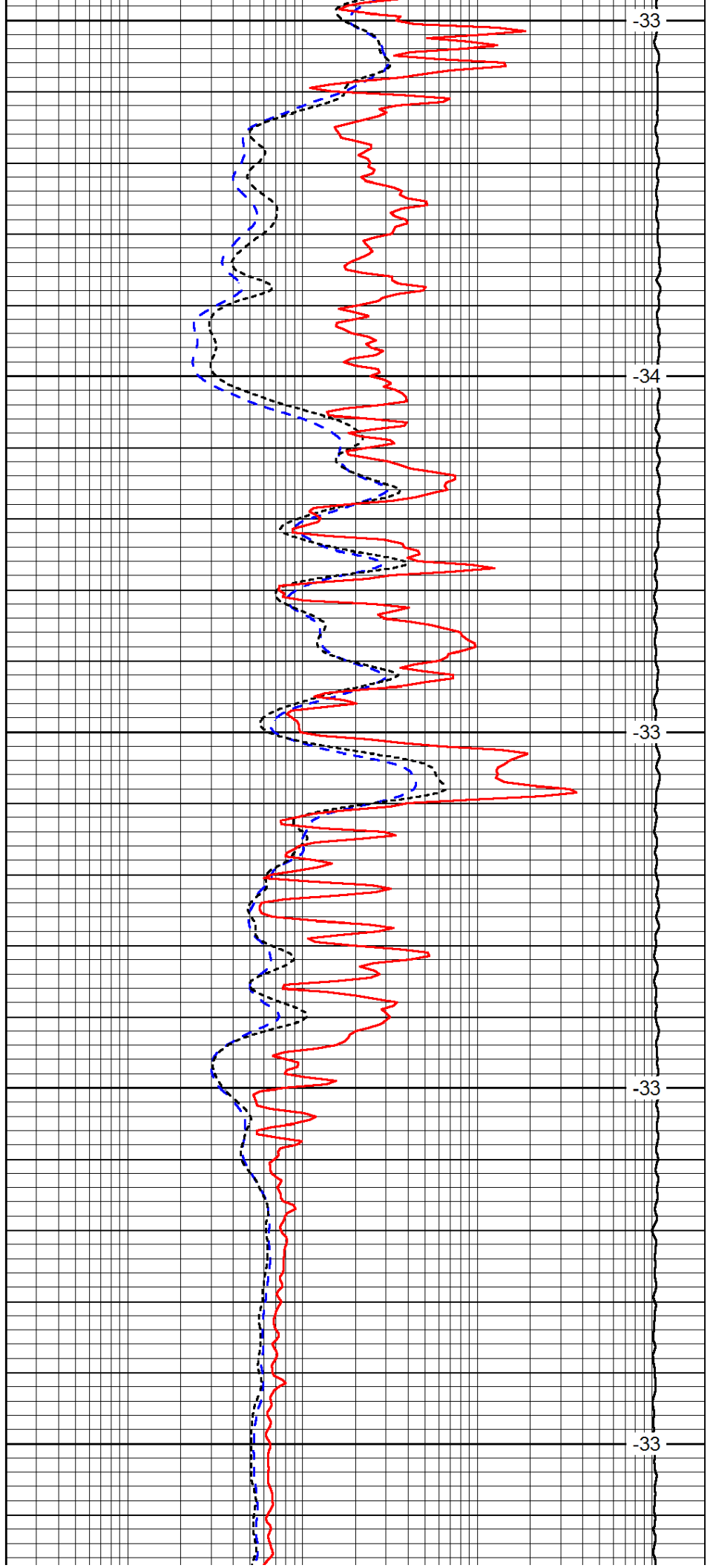
1700

1750

1800

1850

1900



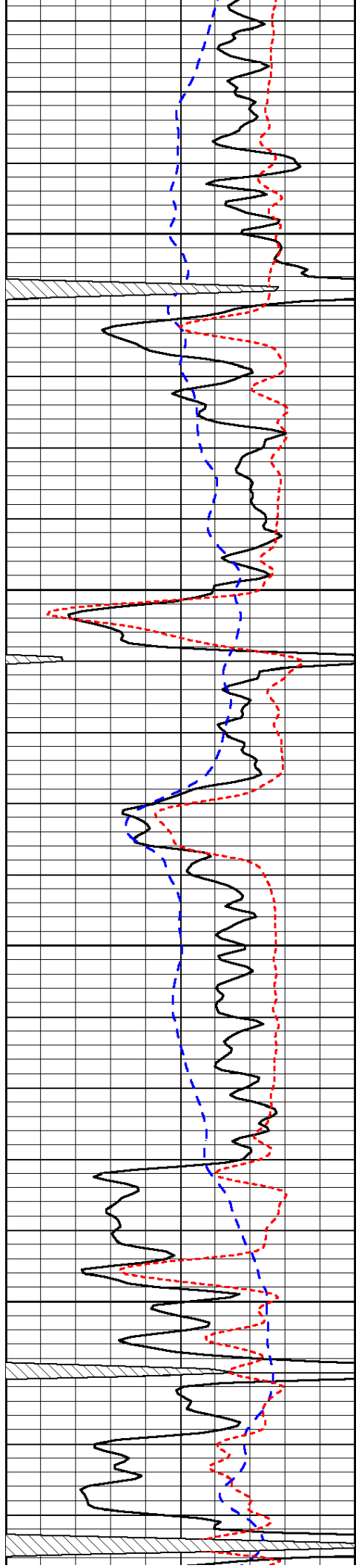
-33

-34

-33

-33

-33

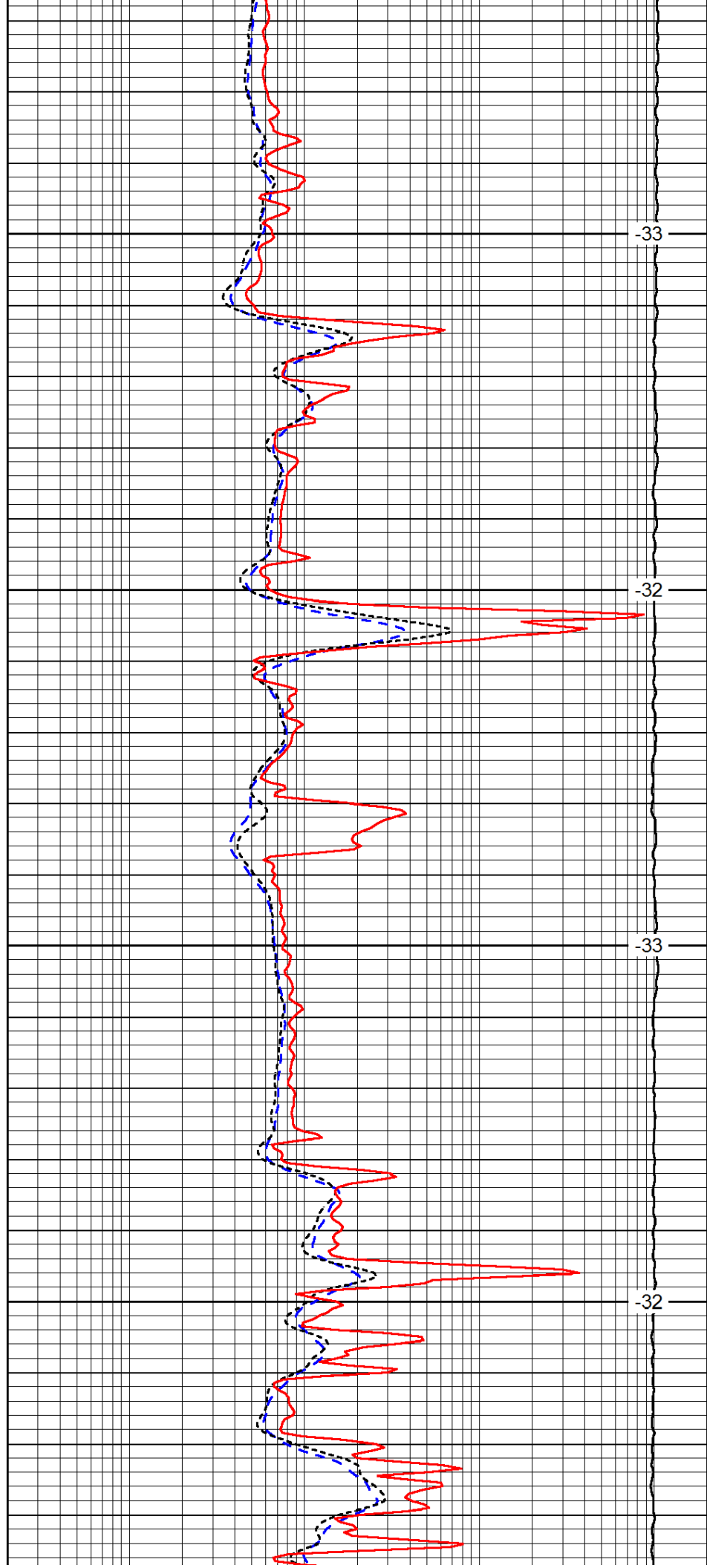


1950

2000

2050

2100

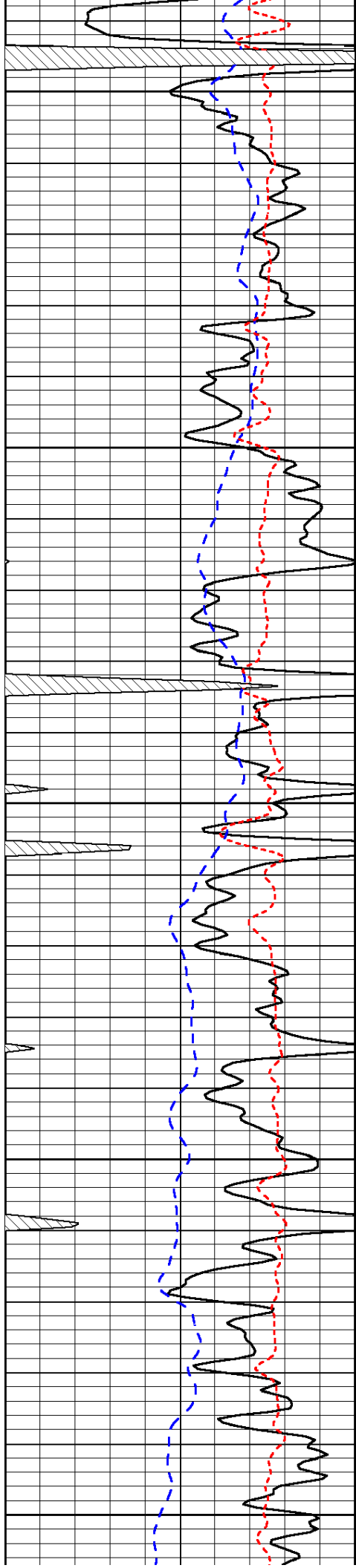


-33

-32

-33

-32



2150

2200

2250

2300

2350

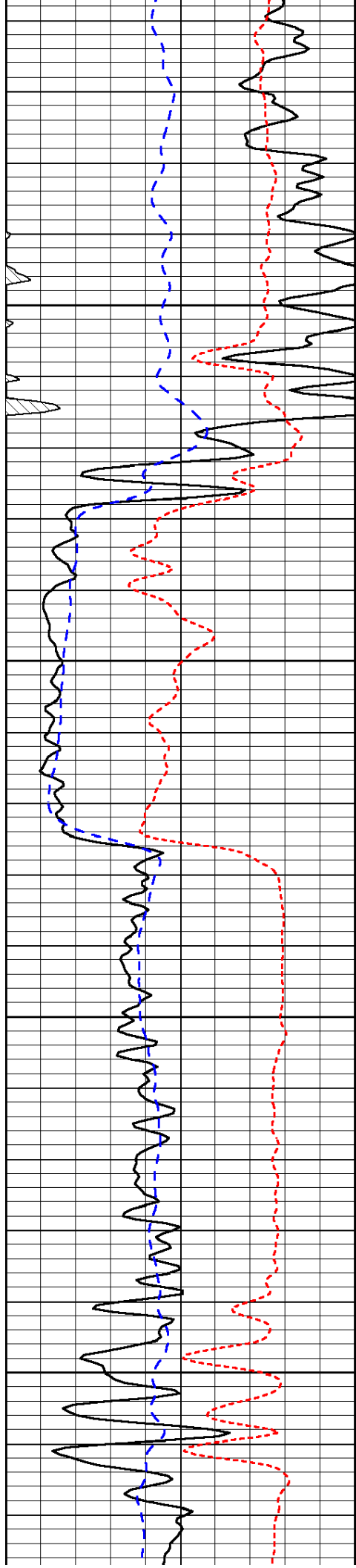
-32

-32

-32

-31

-31

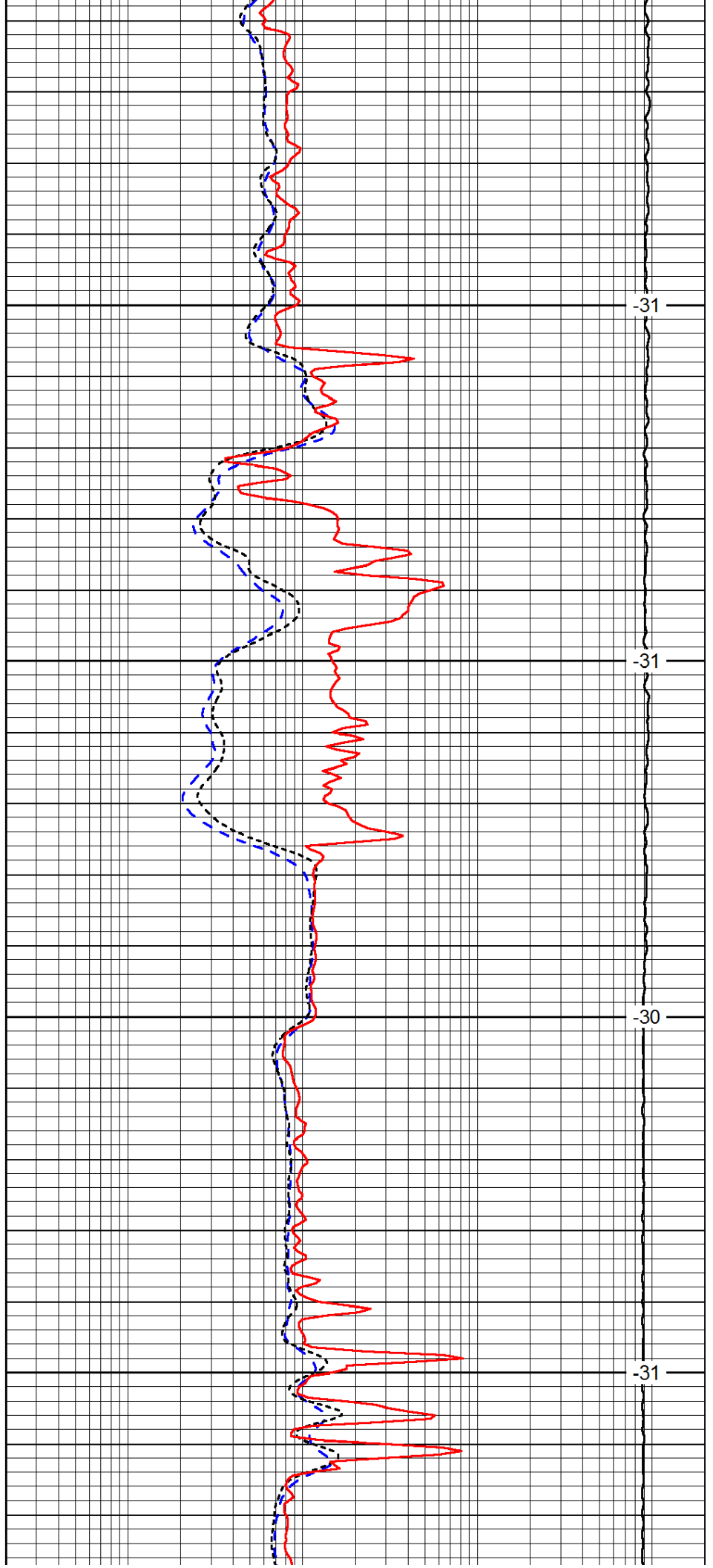


2400

2450

2500

2550

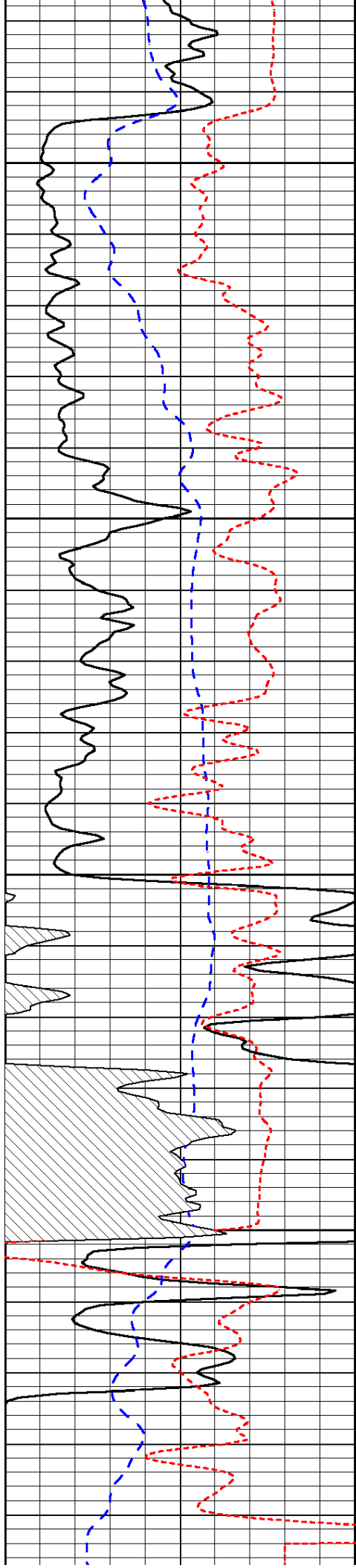


-31

-31

-30

-31

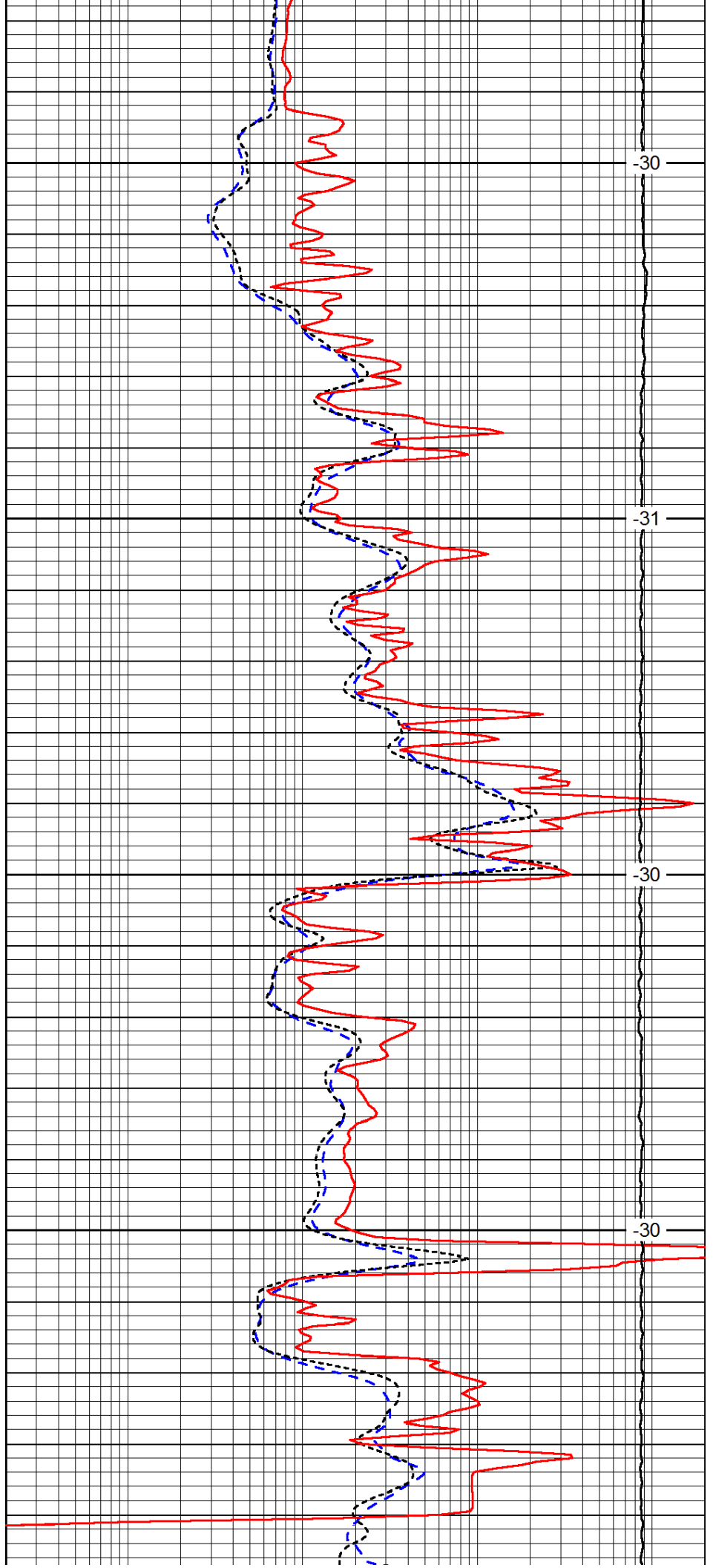


2600

2650

2700

2750

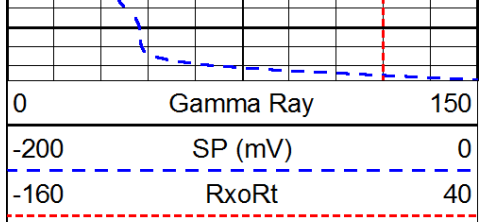


-30

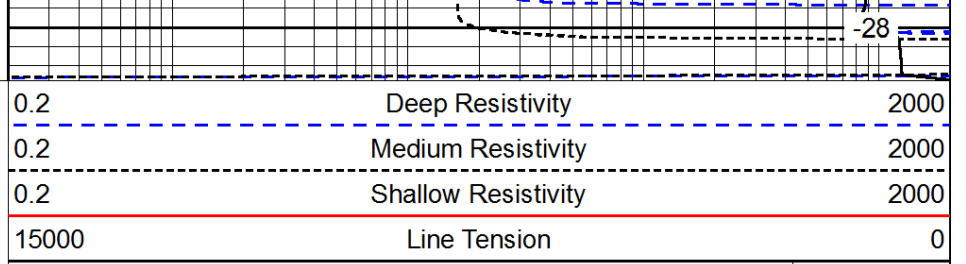
-31

-30

-30



2800



LSPD