



# Dual Compensated Porosity Log

DIGITAL LOG (785) 625-3858

API No. 15-007-23,679-00-00

Company N-10 Exploration, LLC.  
 Well Medicine River Ranch 'B' No. 7  
 Field Landis  
 County Barber  
 State Kansas

Location SW - NW - SE

Sec: 15 Twp: 34 S Rge: 11 W

Other Services DIL

Permanent Datum Ground Level Elevation 1338  
 Log Measured From Kelly Bushing 10 Ft. Above Perm. Datum  
 Drilling Measured From Kelly Bushing

K.B. 1348  
 D.F. 1338

Date	7/9/2011	
Run Number	One	
Type Log	CNL / CDL	
Depth Driller	5045	
Depth Logger	4038	
Bottom Logged Interval	4017	
Top Logged Interval	3400	
Type Fluid In Hole	Chemical	
Salinity, PPM CL	3,000	
Density	9.4	
Level	Full	
Max. Rec. Temp. F	128	
Operating Rig Time	2 1/2 Hours	
Equipment -- Location	17 Hays	
Recorded By	B. Becker	
Witnessed By	Tim Pierce	

Borehole Record		Casing Record				
Run No	Bit From	To	Size	Wgt. 23#	From	To
One	12.25	00	278	8.625	00	278
Two	7.875	278	TD			

<<< Fold Here >>>

All interpretations are opinions based on inferences from electrical or other measurements and we cannot and do not guarantee the accuracy or correctness of any interpretation, and we shall not, except in the case of gross or willful negligence on our part, be liable or responsible for any loss, costs, damages, or expenses incurred or sustained by anyone resulting from any interpretation made by any of our officers, agents or employees. These interpretations are also subject to our general terms and conditions set out in our current Price Schedule.

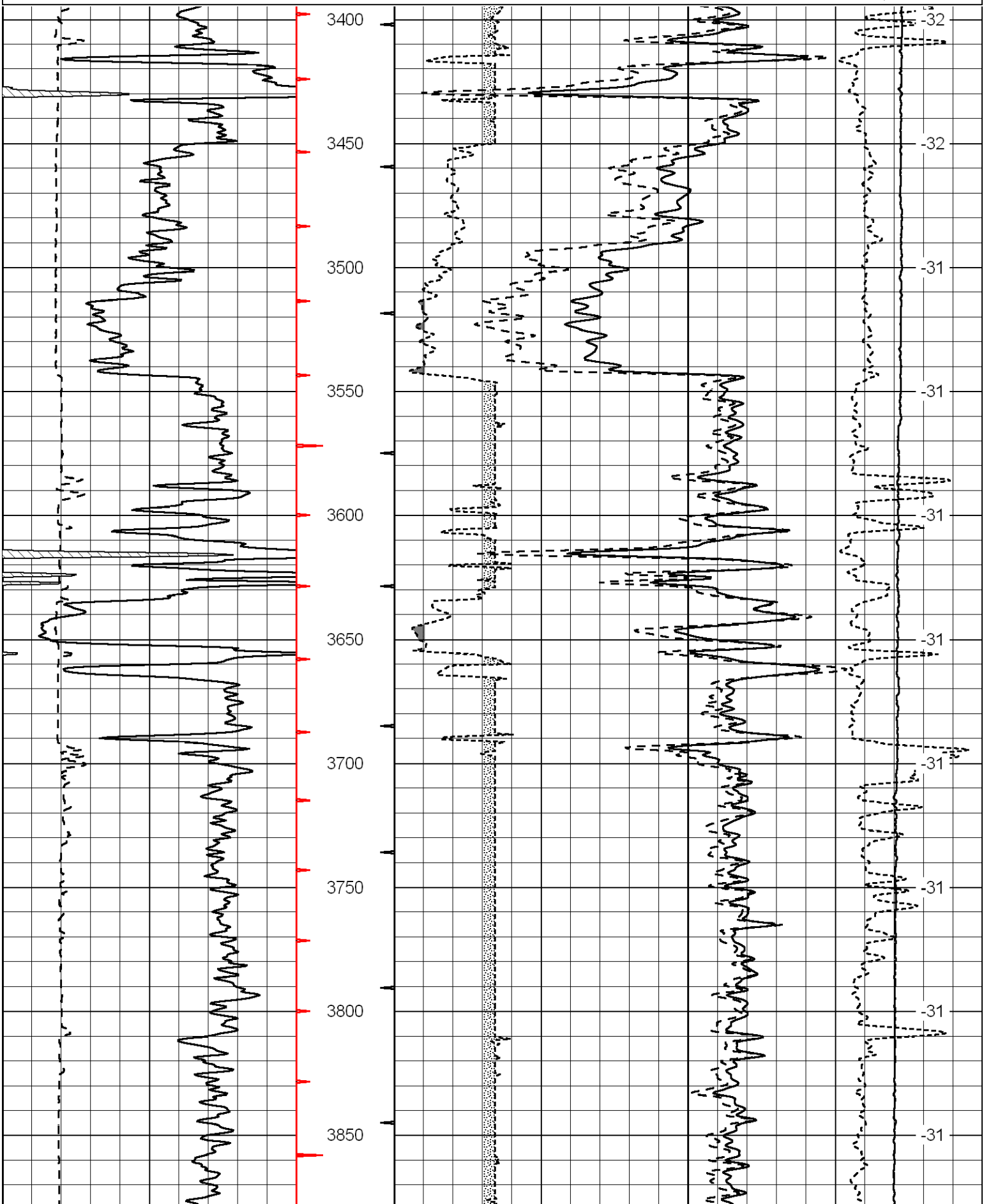
Comments

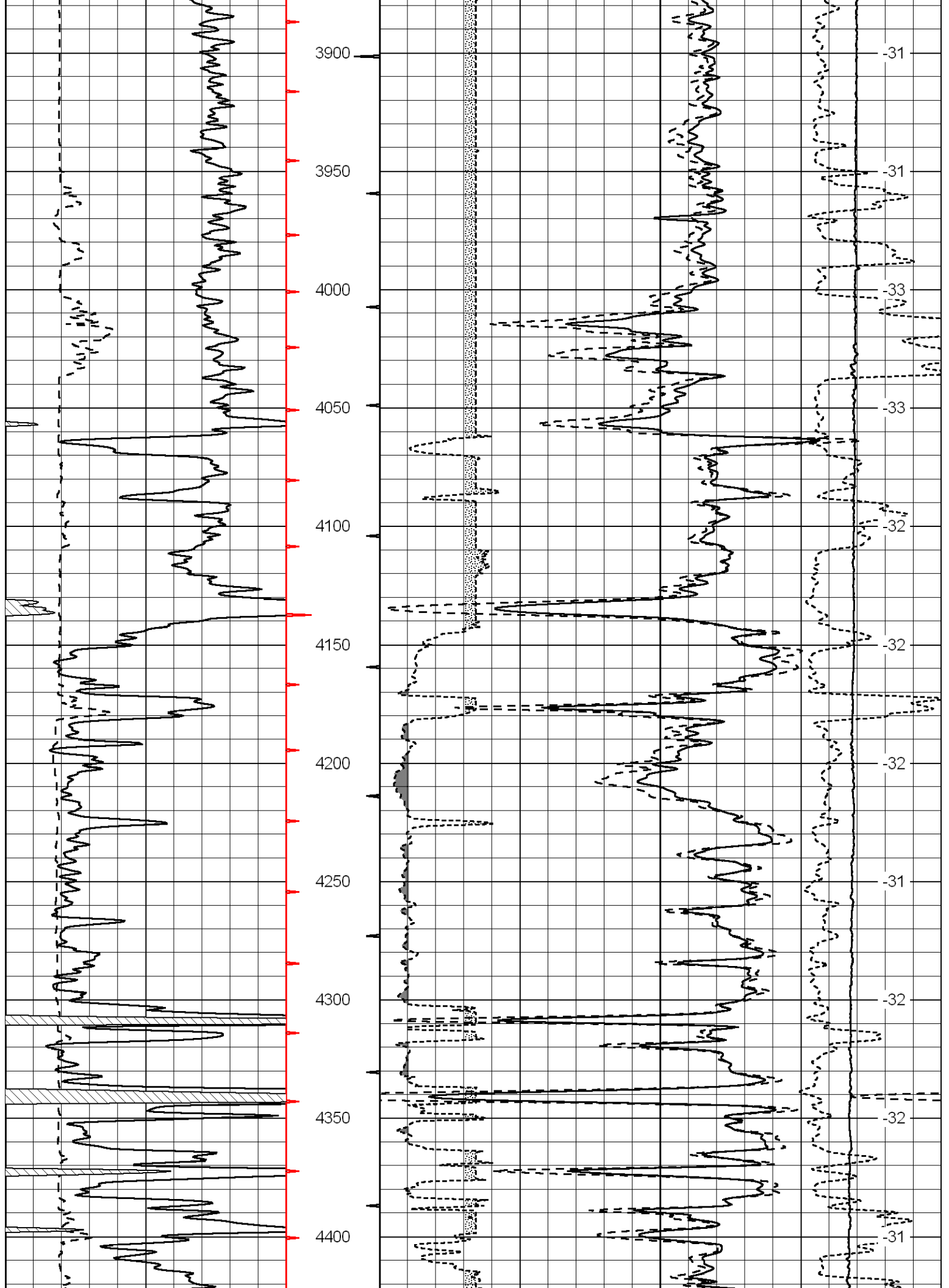
Thank you for using Log-Tech, Inc.  
 (785) 625-3858  
 Medicine Lodge, Ks; West to 281 & 160 Jct.  
 9 South to Gerlane Rd; 7.2 East to Bethel Rd;  
 3.6 South to Angus Rd; 2 West; North through Cattle Crossing;  
 1 North; 1/4 East at pump jack across cattle crossing;  
 Continue 1/4 East; South to location

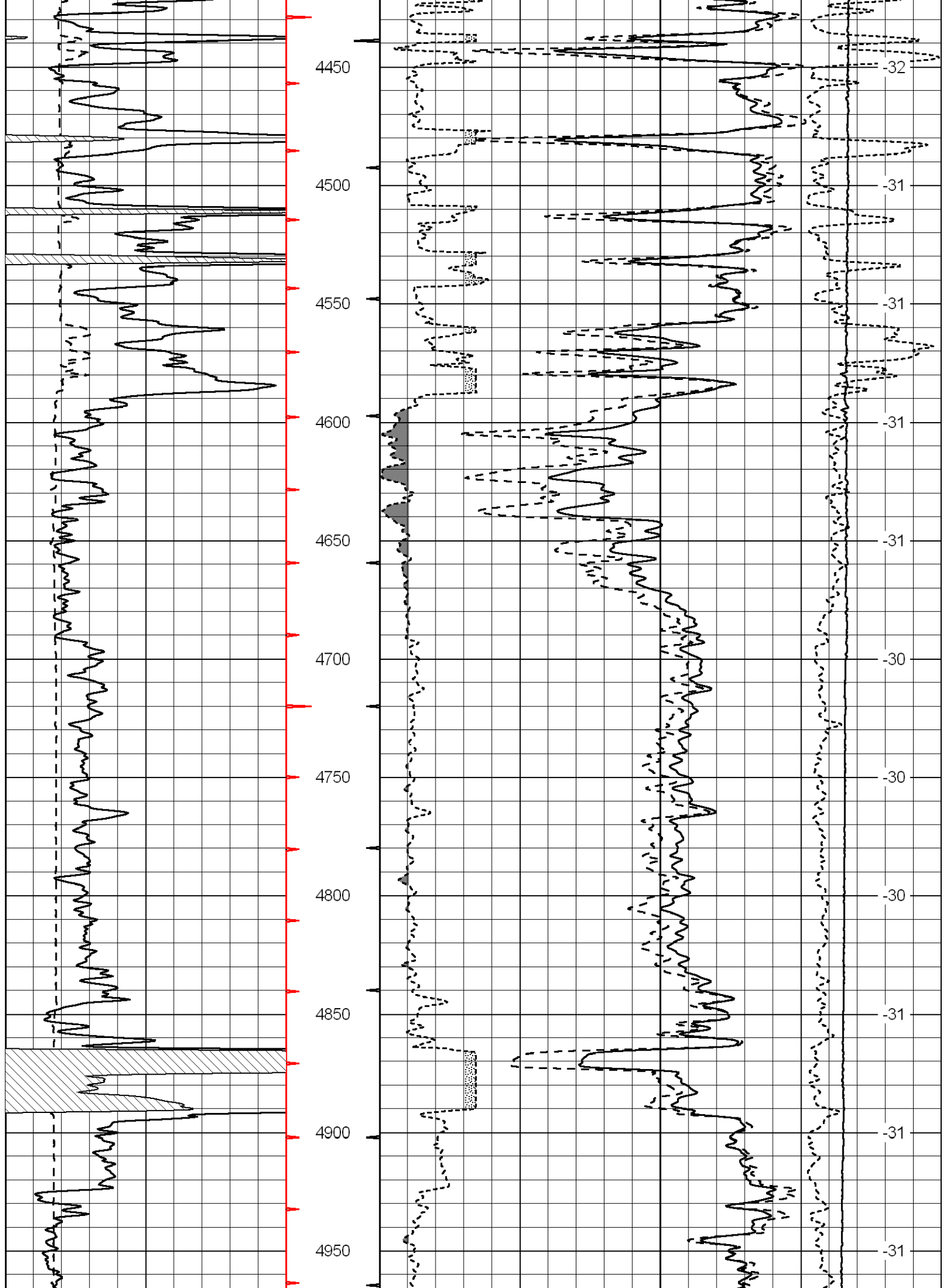
Database File: n10hd.db  
 Dataset Pathname: DIL/n10stk  
 Presentation Format: cdl  
 Dataset Creation: Sat Jul 09 19:06:24 2011  
 Charted by: Depth in Feet scaled 1:600

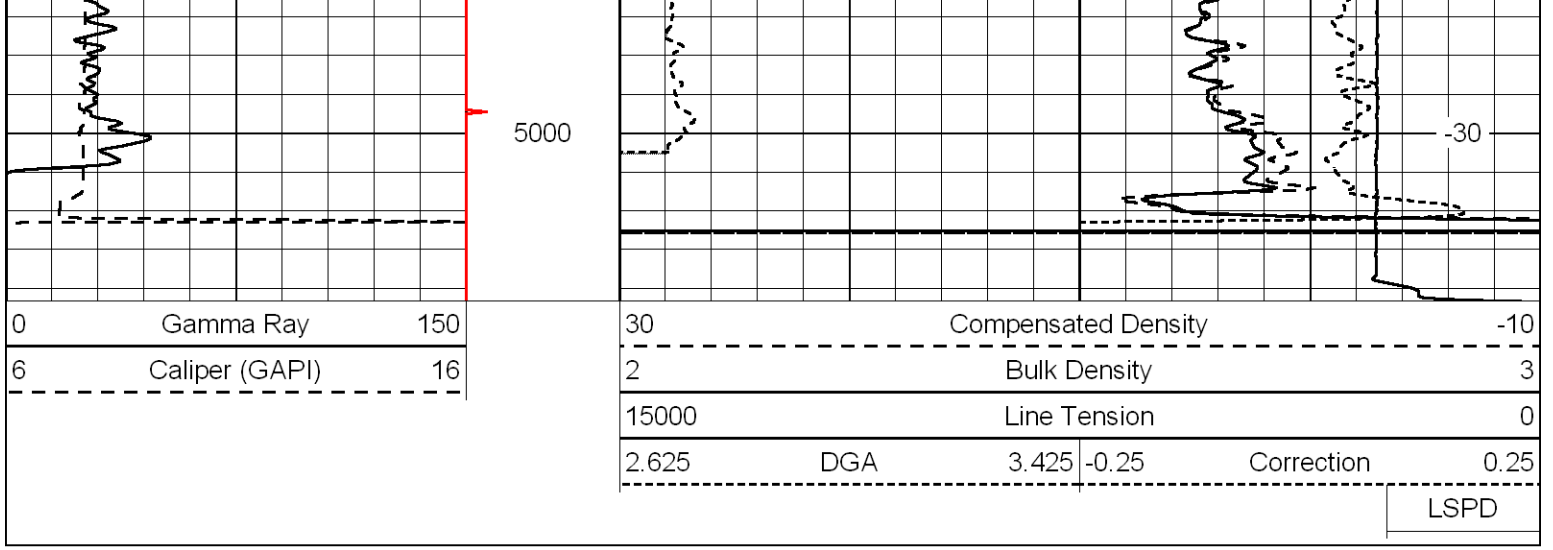
0	Gamma Ray	150
6	Caliper (GAPI)	16

30	Compensated Density		-10
2	Bulk Density		3
15000	Line Tension		0
2.625	DGA	3.425	-0.25
Correction			0.25
LSPD			

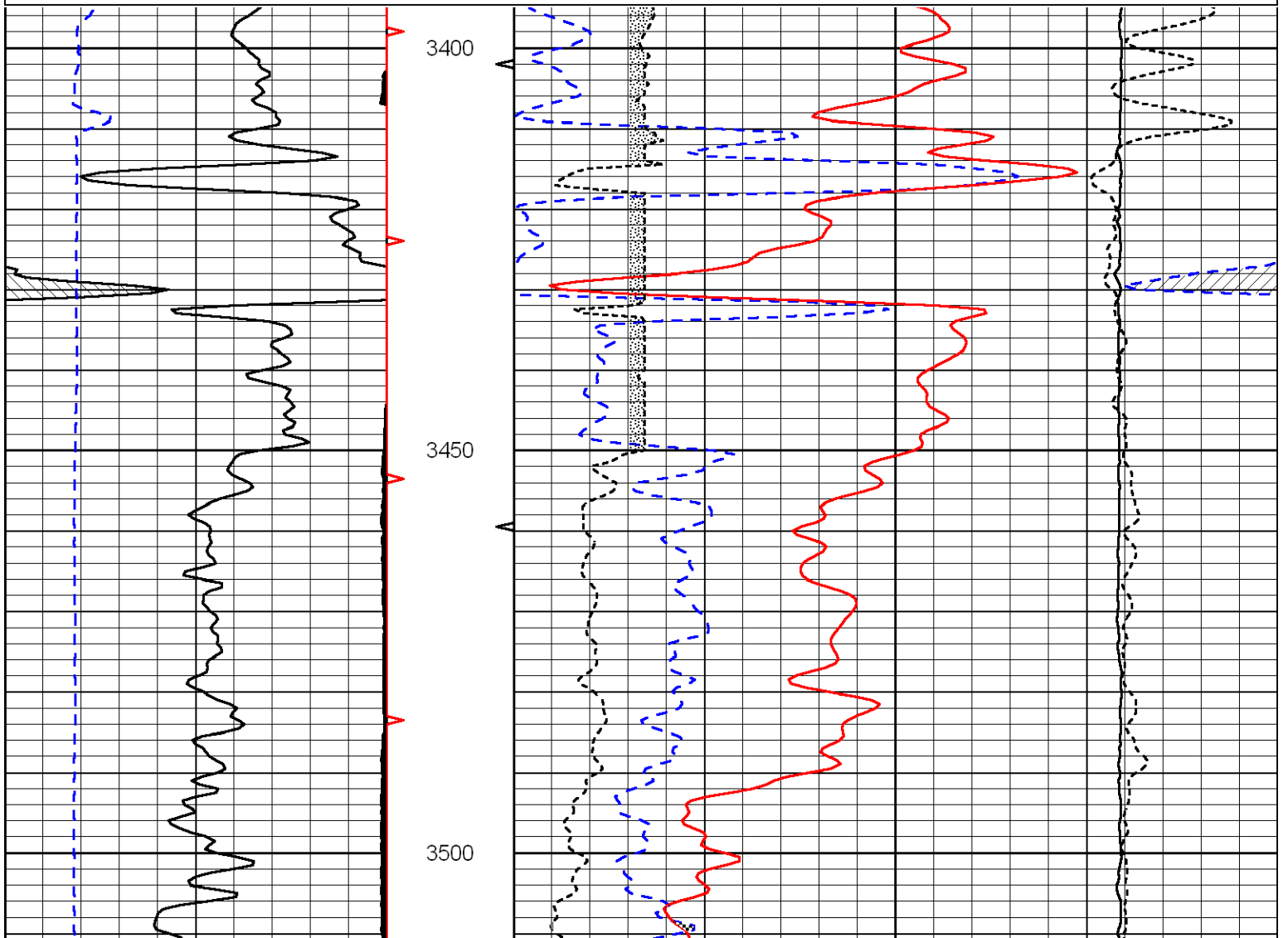
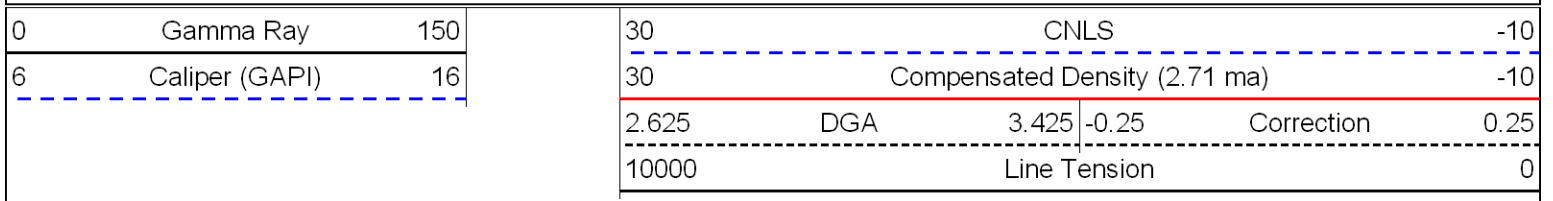


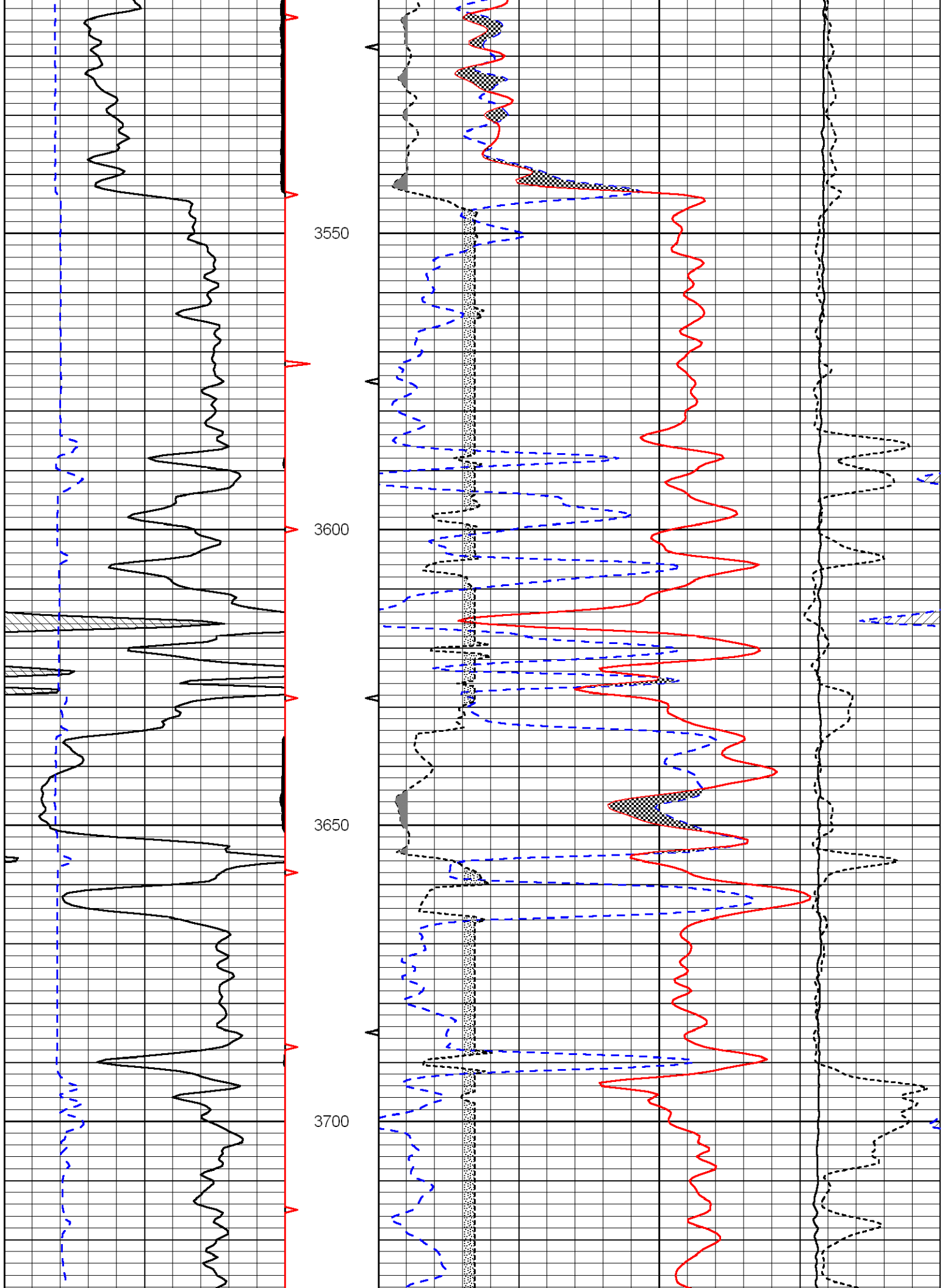


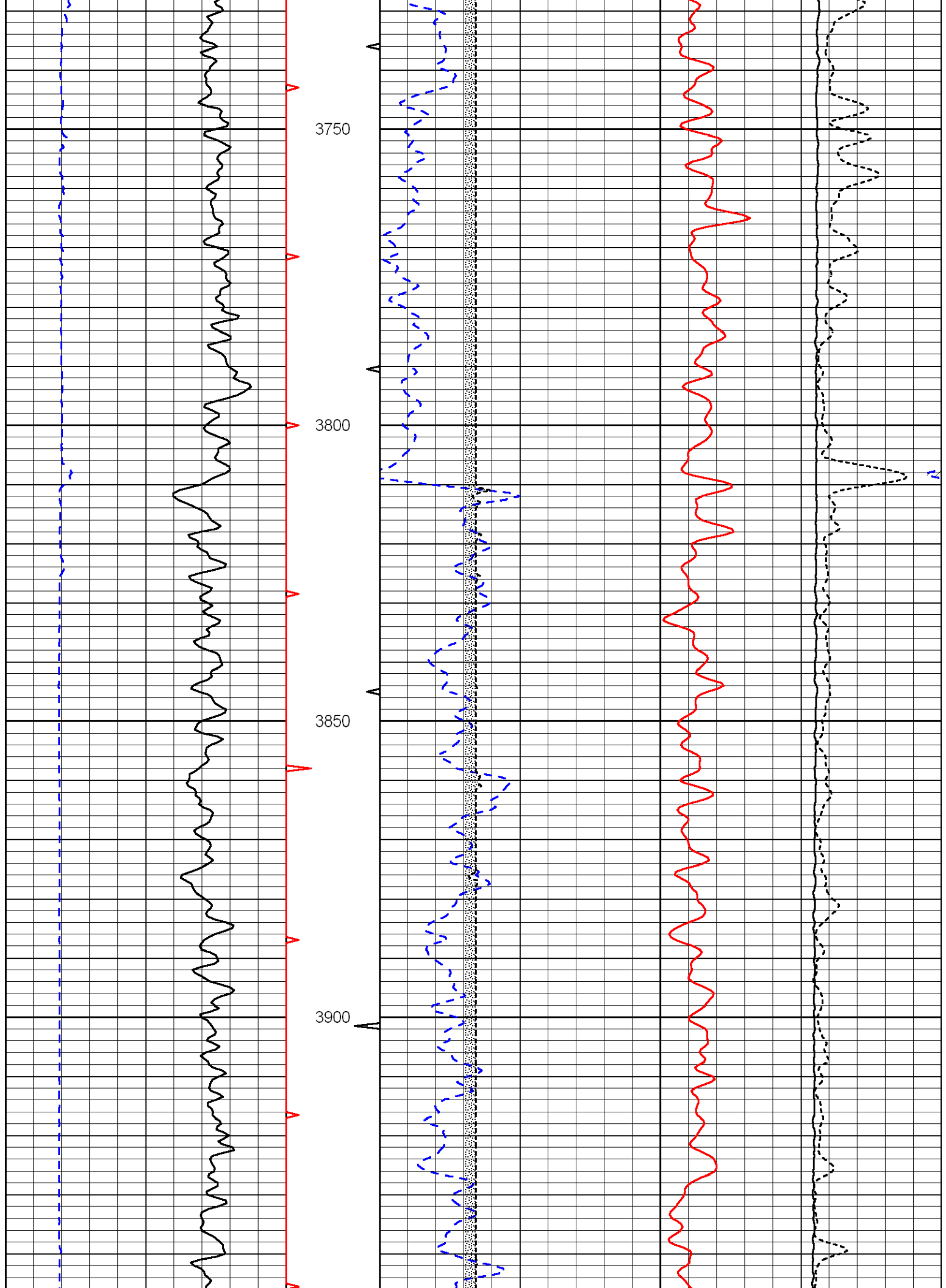


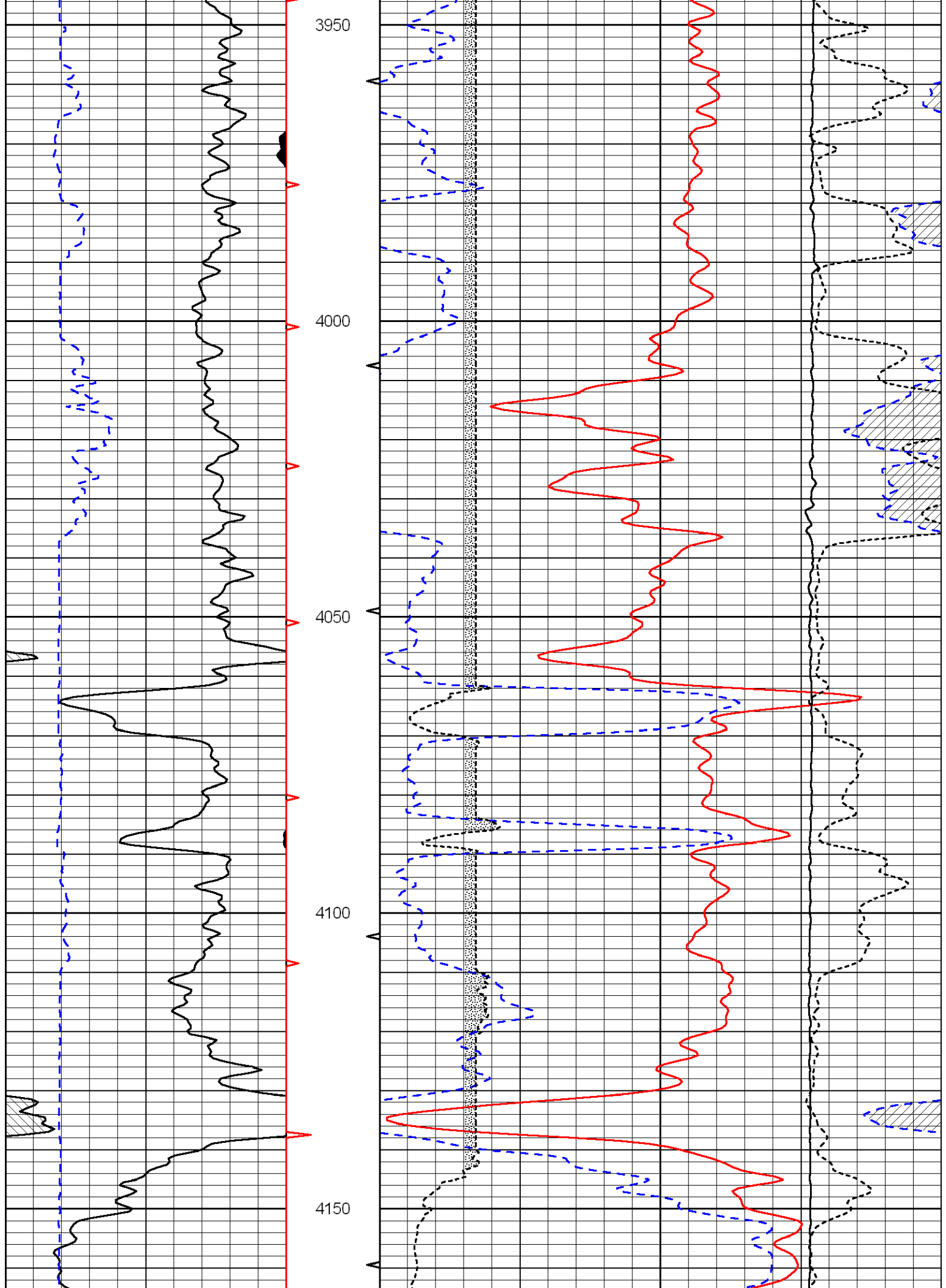


Database File: n10hd.db  
 Dataset Pathname: DIL/n10stk  
 Presentation Format: cndlspec  
 Dataset Creation: Sat Jul 09 19:06:24 2011  
 Charted by: Depth in Feet scaled 1:240

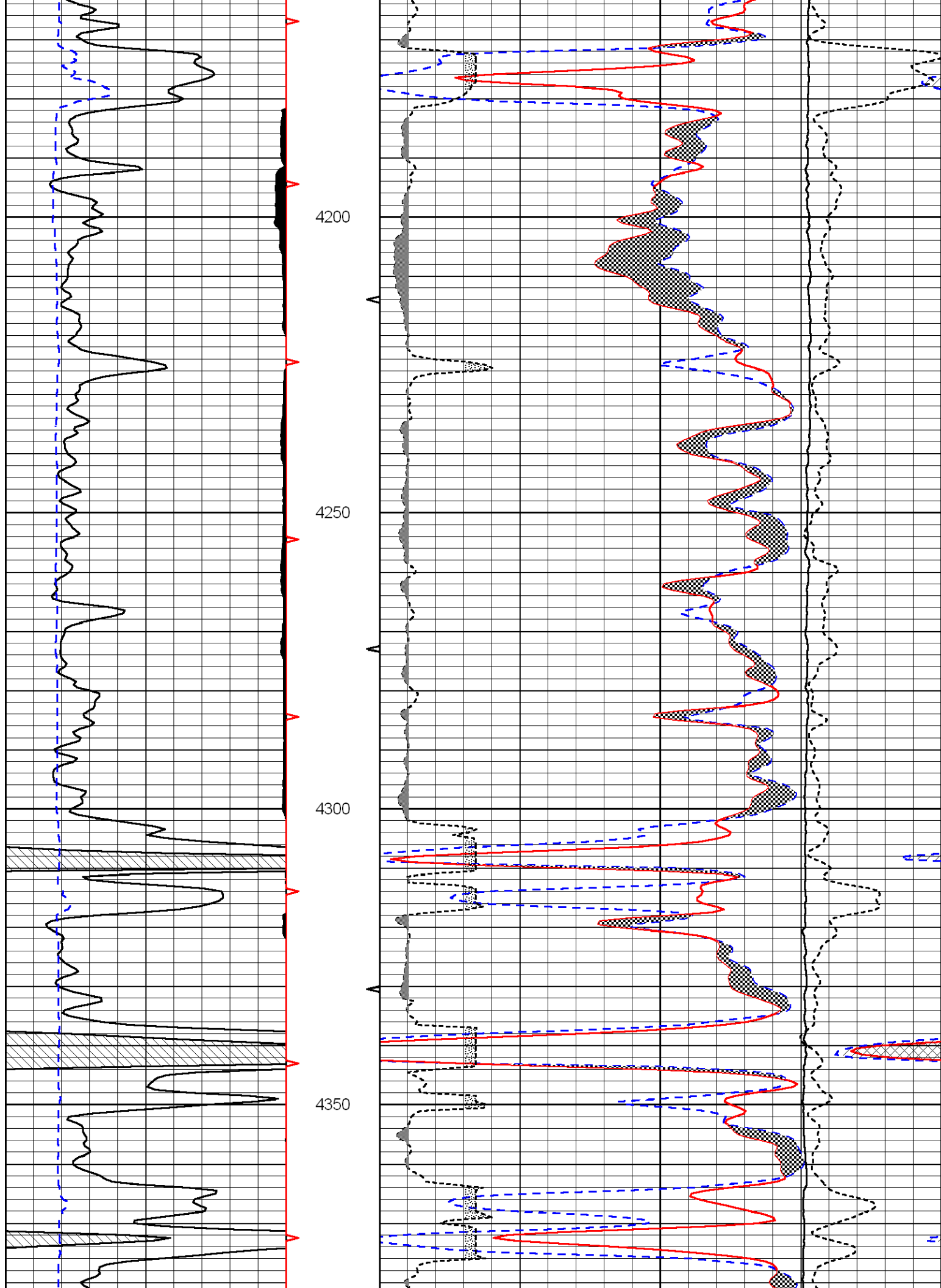


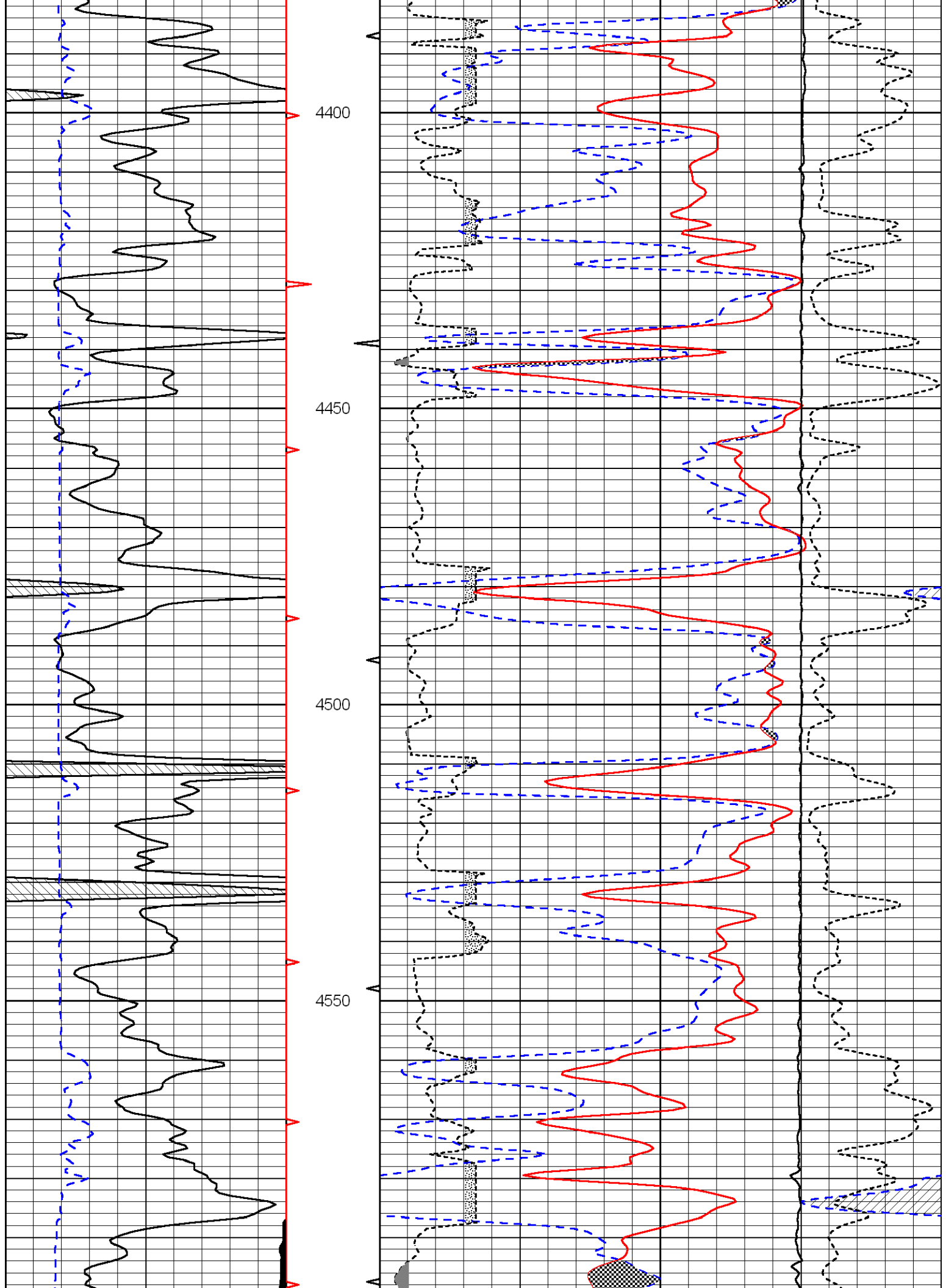


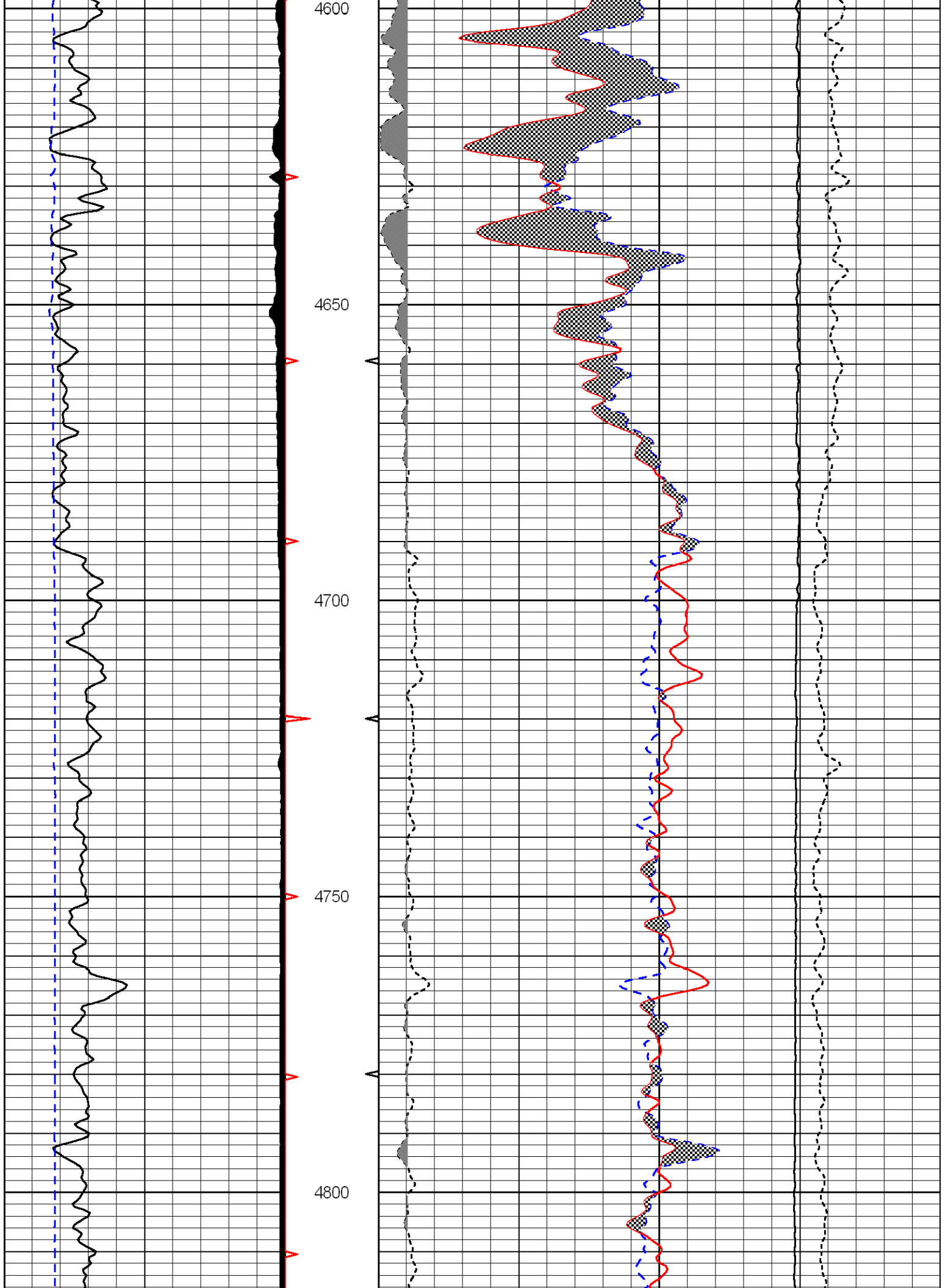


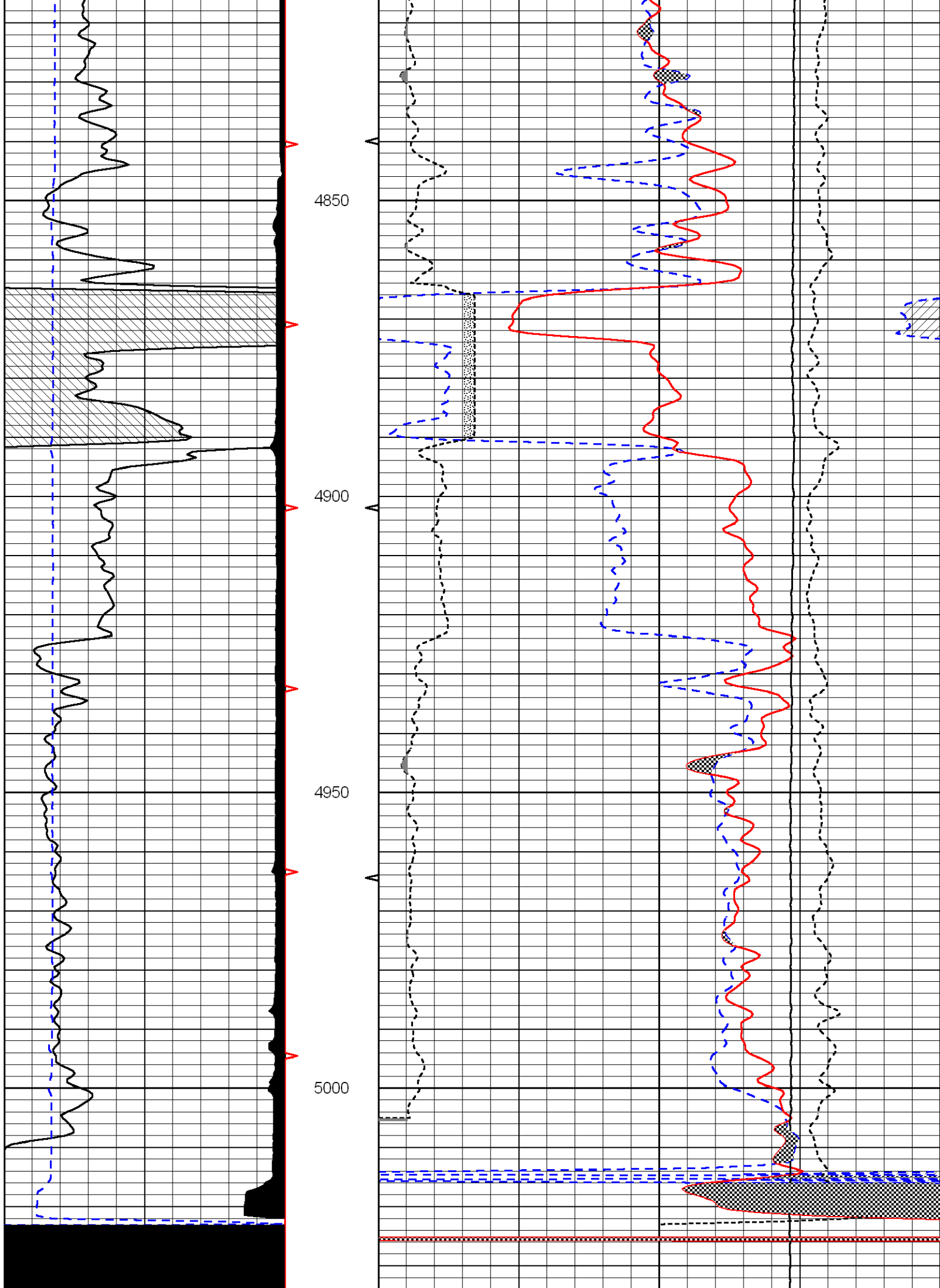












0	Gamma Ray	150
---	-----------	-----

6	Caliper (GAPI)	16
---	----------------	----

30	CNLS	-10
----	------	-----

30	Compensated Density (2.71 ma)	-10
----	-------------------------------	-----

2.625	DGA	3.425	-0.25	Correction	0.25
-------	-----	-------	-------	------------	------

10000	Line Tension	0
-------	--------------	---