



DIGITAL LOG (785) 625-3858

**Microresistivity
Log**

API No. 15-163-23,695-00-00

Company **Murfin Drilling Company, Inc.**
 Well **Hilgers No.4-19**
 Field **Mayhew**
 County **Rooks** State **Kansas**

Location **800' FNL & 1450' FWL**

Sec: **19** Twp: **9S** Rge: **18W**

Other Services
 CNL/CDL
 DIL/BHCS

Permanent Datum	Ground Level	Elevation 2152	K.B. 2157 D.F. 2152 G.L. 2152
Log Measured From	Kelly Bushing	5 Ft. Above Perm. Datum	
Drilling Measured From	Kelly Bushing		
Date	7/15/2011		
Run Number	Two		
Depth Driller	3670		
Depth Logger	3670		
Bottom Logged Interval	3669		
Top Log Interval	3000		
Casing Driller	8.625 @ 218		
Casing Logger	219		
Bit Size	7.875		
Type Fluid in Hole	Chemical		
Salinity, ppm CL	5.000		
Density / Viscosity	9.4 57		
pH / Fluid Loss	10.0 8.0		
Source of Sample	Flowline		
Rm @ Meas. Temp	.65 @ 88		
Rmf @ Meas. Temp	.49 @ 88		
Rmc @ Meas. Temp	.88 @ 88		
Source of Rmf / Rmc	Charts		
Rm @ BHT	.51 @ 113		
Operating Rig Time	4 Hours		
Max Rec. Temp. F	113		
Equipment Number	15		
Location	Hays		
Recorded By	C. Desaire		
Witnessed By	Jeff Christian		

<<< Fold Here >>>

All interpretations are opinions based on inferences from electrical or other measurements and we cannot and do not guarantee the accuracy or correctness of any interpretation, and we shall not, except in the case of gross or willful negligence on our part, be liable or responsible for any loss, costs, damages, or expenses incurred or sustained by anyone resulting from any interpretation made by any of our officers, agents or employees. These interpretations are also subject to our general terms and conditions set out in our current Price Schedule.

Comments

Thank you for using Log-Tech, Inc.
 (785) 625-3858

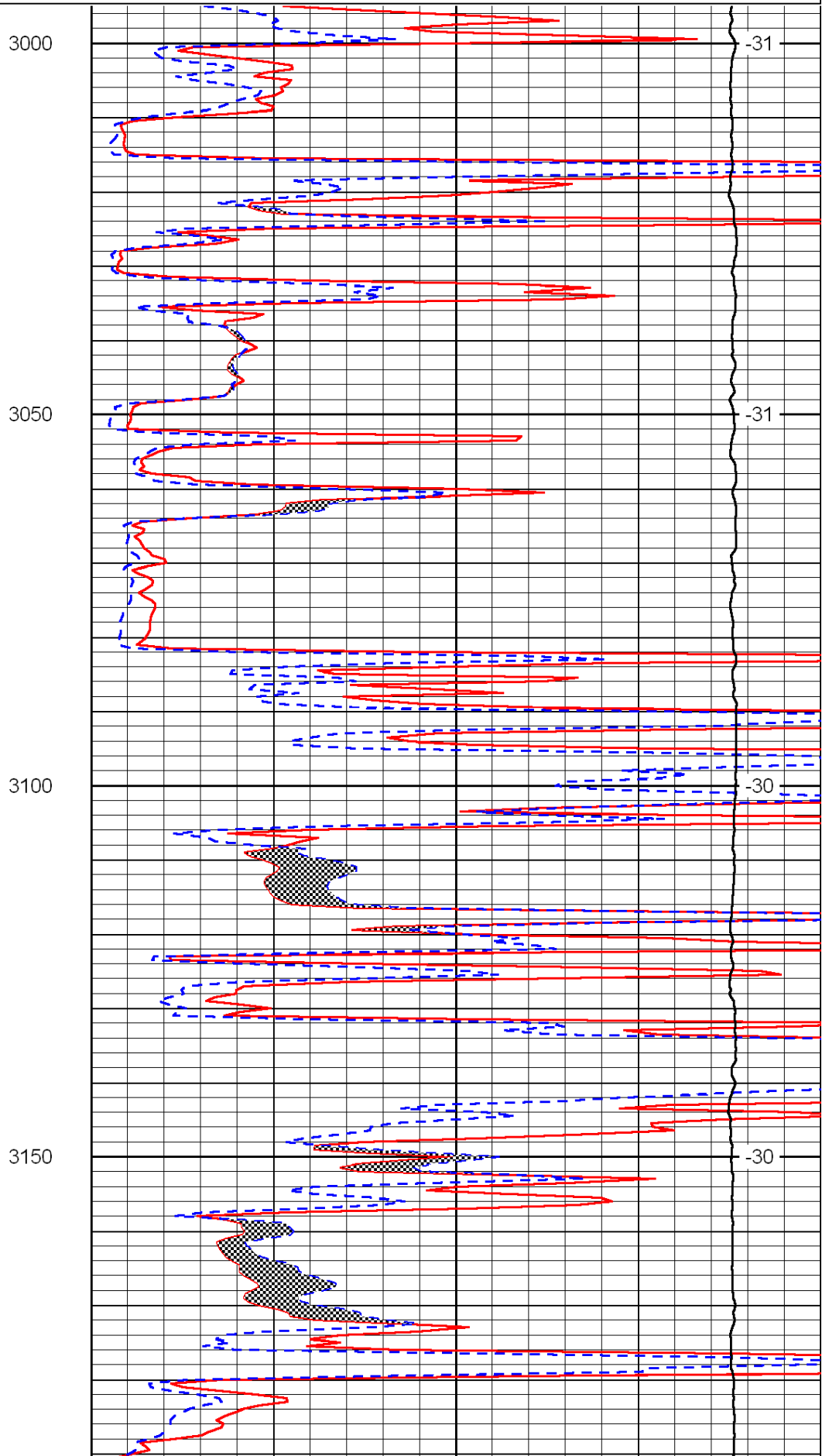
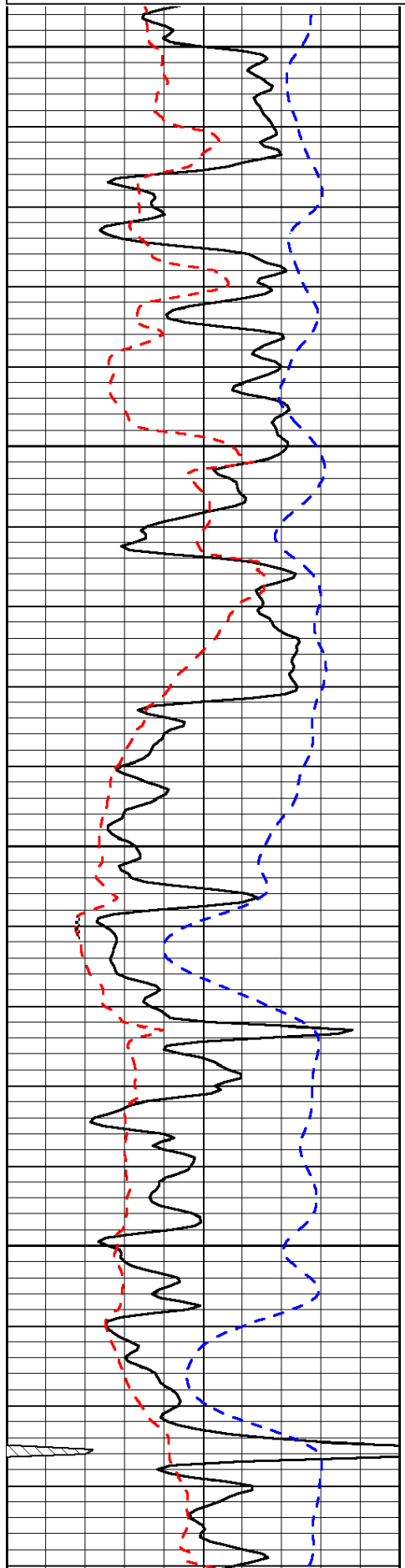
Plainville, 4 1/2 W to 13 Rd,
 2 N, E & SE Into

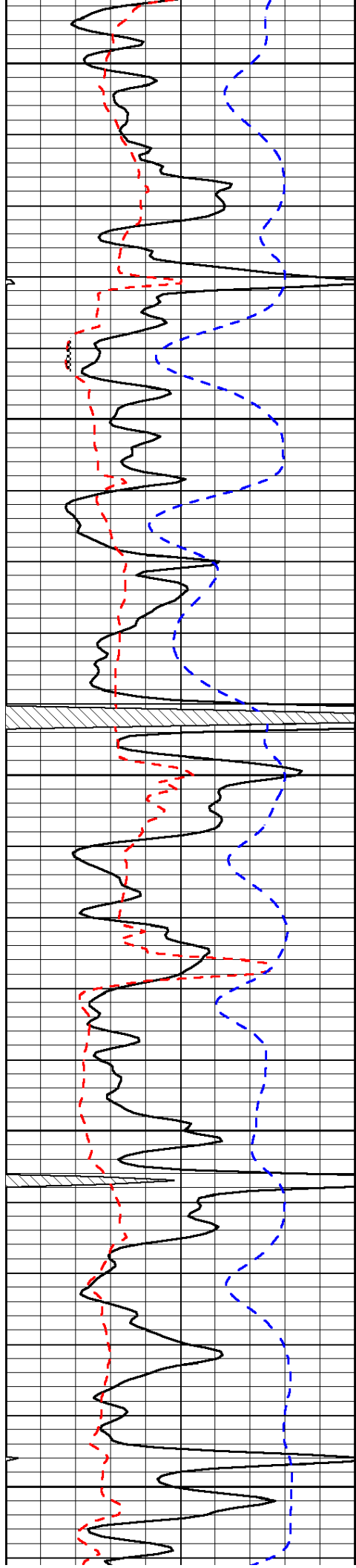
Database File: c:\warrior\data\murfin_hilgers #4-19\murfinhd.db
 Dataset Pathname: dil/murfstk
 Presentation Format: micro
 Dataset Creation: Fri Jul 15 16:29:57 2011
 Charted by: Depth in Feet scaled 1:240

0	Gamma Ray	150
6	Micro Log Caliper (GAPI)	16
-200	SP (mV)	0

0	Micro Inverse 1 X 1	40
0	Micro Normal 2"	40
15000	Line Weight	0

LSPD





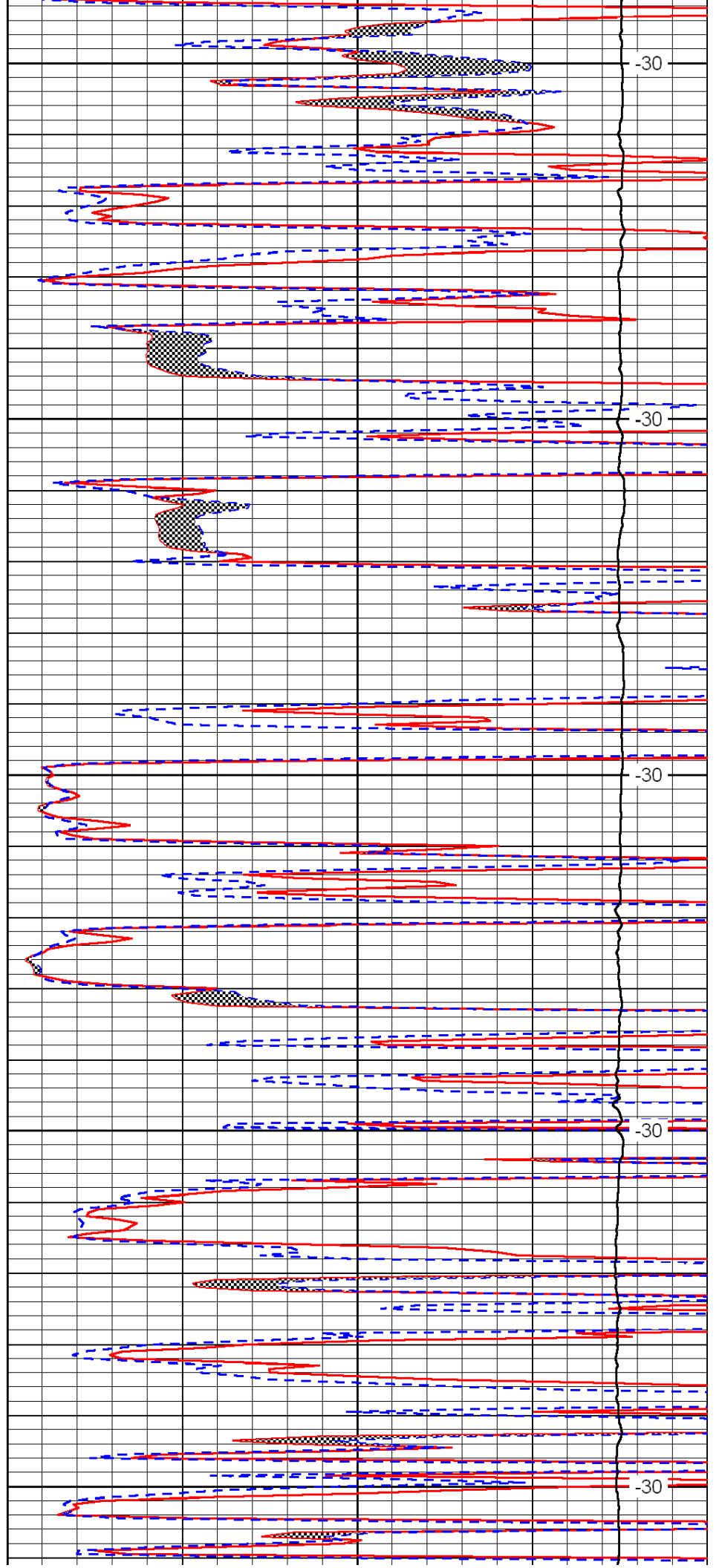
3200

3250

3300

3350

3400



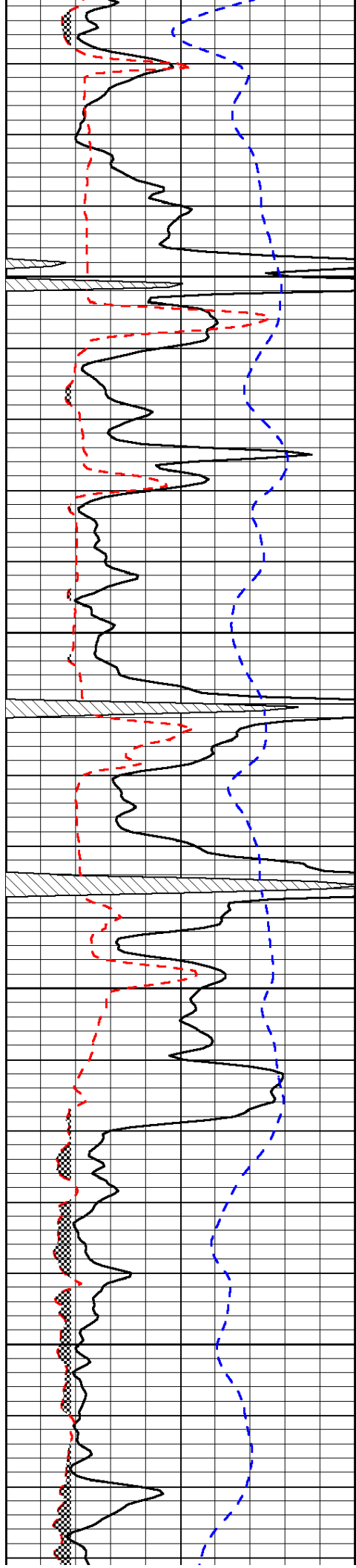
-30

-30

-30

-30

-30

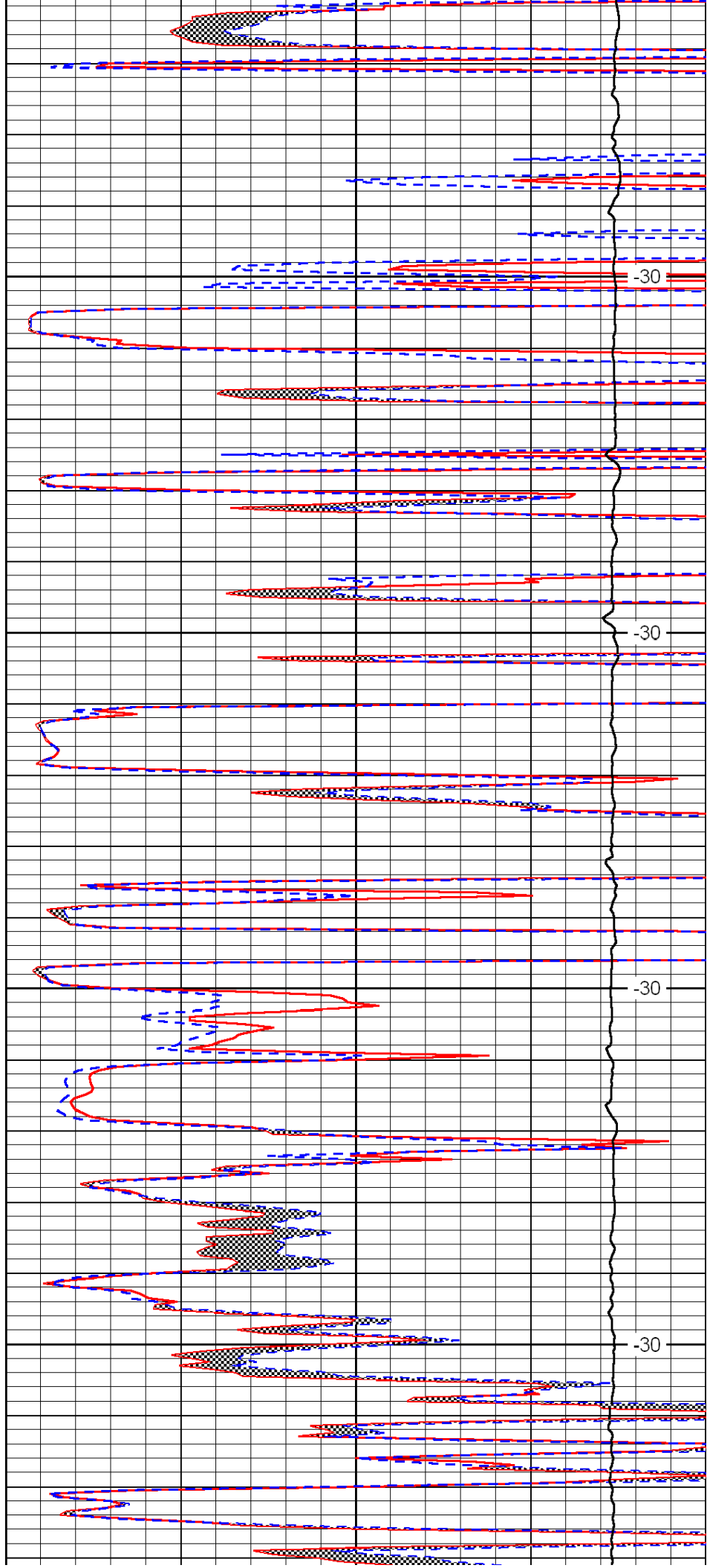


3450

3500

3550

3600

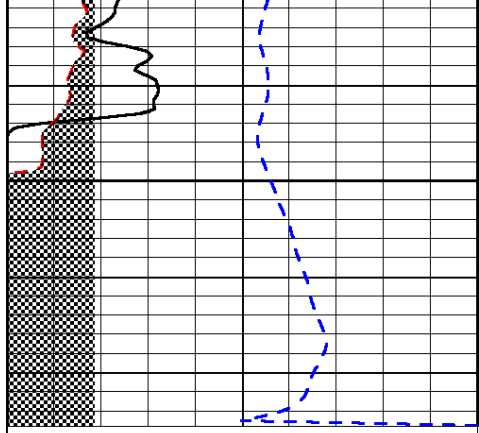


-30

-30

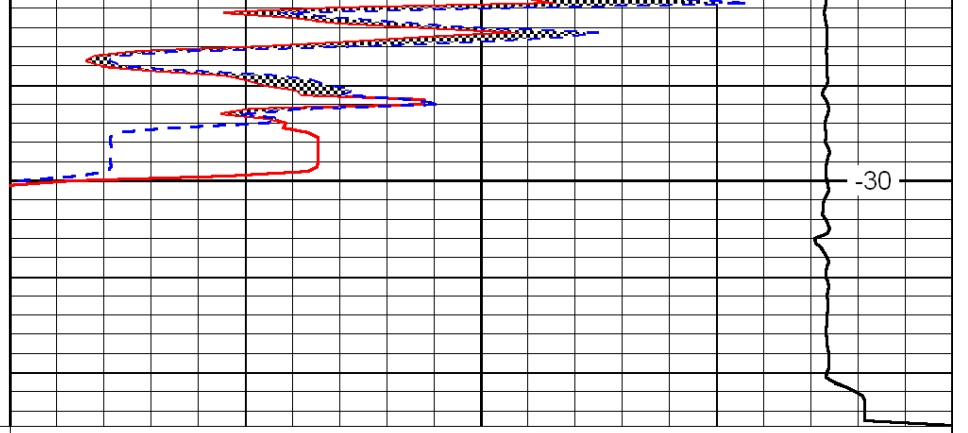
-30

-30



0	Gamma Ray	150
6	Micro Log Caliper (GAPI)	16
-200	SP (mV)	0

3650



0	Micro Inverse 1 X 1	40
0	Micro Normal 2''	40
15000	Line Weight	0

-30

LSPD