



**MIDWEST SURVEYS**  
 LOGGING - PERFORATING - CONSULTING SERVICES  
 P.O. Box 68, Osawatomie, KS 66064  
 913.755-2128

**GAMMA RAY / NEUTRON / CCL**

File No.

Company **Energex Kansas, Inc.**

Well **Johnston No. BSP - JO-12**

Field **Paola / Rantoul**

County **Franklin** State **Kansas**

Location **1485 FSL & 825 FEL**

**SE-SW-NE-SE**

Sec. **17** Twp. **18S** Rge. **21E**

Permanent Datum **GL** Elevation **NA**

Log Measured From **GL**

Drilling Measured From **GL**

Date **7-13-2011**

Run Number **One**

Depth Diller **700.0**

Depth Logger **680.5**

Bottom Logged Interval **678.5**

Top Log Interval **20.0**

Fluid Level **Full**

Type Fluid **Water**

Density / Viscosity **NA**

Salinity - PPM Cl **NA**

Max. Recorded Temp **NA**

Estimated Cement Top **0.0**

Equipment No. **104** Location **Osawatomie**

Recorded By **Gary Wandsch**

Witnessed By **Jay Schindler**

BORE-HOLE RECORD		CASINGS RECORD		TO		
Run No.	BIT FROM	TO	SIZE	WGT.	FROM	TO
One	8.63"	0.0	20.0	7.00"	0.0	20.0
Two	6.25"	20.0	700.0	2.875"	0.0	686.0

<<< Fold Here >>>

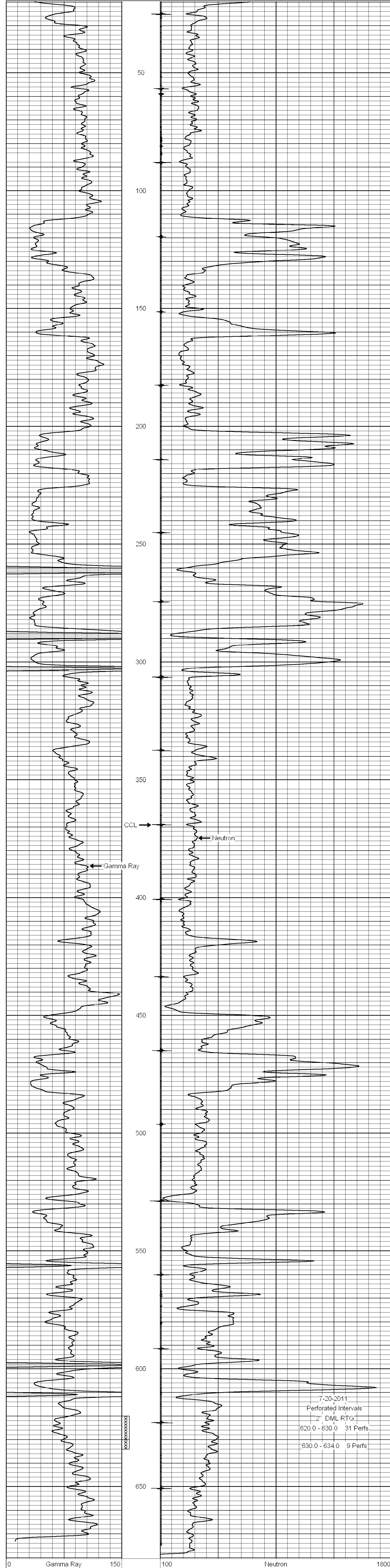
All interpretations are opinions based on inferences from electrical or other measurements and we cannot and do not guarantee the accuracy or correctness of any interpretation, and we shall not, except in the case of gross or willful negligence on our part, be liable or responsible for any loss, costs, damages, or expenses incurred or sustained by anyone resulting from any interpretation made by any of our officers, agents or employees. These interpretations are also subject to our general terms and conditions set out in our current Price Schedule.

**Comments**

Drilling Contractor:  
**JTC Oil, Inc.**

Database File: jhn12bsp.db  
 Dataset Pathname: pass1  
 Presentation Format: gr-n-ccl  
 Dataset Creation: Wed Jul 13 15:37:22 2011 by Log Warrior Version 6.6  
 Charted by: Depth in Feet scaled 1:240

0	Gamma Ray	150	100	Neutron	1800
150	Gamma Ray	300			



7-20-2011  
 Perforated Intervals  
 2" DML RTG  
 620.0 - 630.0 31 Perfs  
 630.0 - 634.0 9 Perfs

0	Gamma Ray	150	100	Neutron	1800
150	Gamma Ray	300			