



**MIDWEST SURVEYS**  
 LOGGING - PERFORATING - CONSULTING SERVICES  
 P.O. Box 68, Osawatomie, KS 66064  
 913 / 755 - 2128

**GAMMA RAY / NEUTRON / CCL**

API # 15-107-24,364

File No.

Company **Bobcat Oilfield Services, Inc.**

Well **North East Baker No. D-10**

Field **Cadmus / LaCygne**

County **Linn** State **Kansas**

Location

**2175' FSL & 2145' FEL**

**SE-NW-NW-SE**

Sec. **5** Twp. **20S** Rge. **23E**

Permanent Datum **GL** Elevation **NA**

Log Measured From **GL**

Drilling Measured From **GL**

Other Services

Perforate

Elevation

K.B. NA  
D.F. NA  
G.L. NA

Date **09-06-2011**

Run Number **One**

Depth Driller **340.0**

Depth Logger **332.0**

Bottom Logged Interval **330.0**

Top Log Interval **20.0**

Fluid Level

Type Fluid **Water**

Density / Viscosity **NA**

Salinity - PPM Cl **NA**

Max. Recorded Temp **NA**

Estimated Cement Top **0.0**

Equipment No. **104** Location **Osawatomie**

Recorded By **Gary Windisch**

Witnessed By **Bob Eberhart**

**BORE-HOLE RECORD**

Run No.	BIT	FROM	TO	SIZE	WGT.	FROM	TO
One	8.75"	0.0	20.0	6.00"	0.0	0.0	20.0
Two	5.625"	20.0	340.0	2.875"	0.0	0.0	332.0

**CASING RECORD**

Run No.	BIT	FROM	TO	SIZE	WGT.	FROM	TO
One	8.75"	0.0	20.0	6.00"	0.0	0.0	20.0
Two	5.625"	20.0	340.0	2.875"	0.0	0.0	332.0

<<< Fold Here >>>

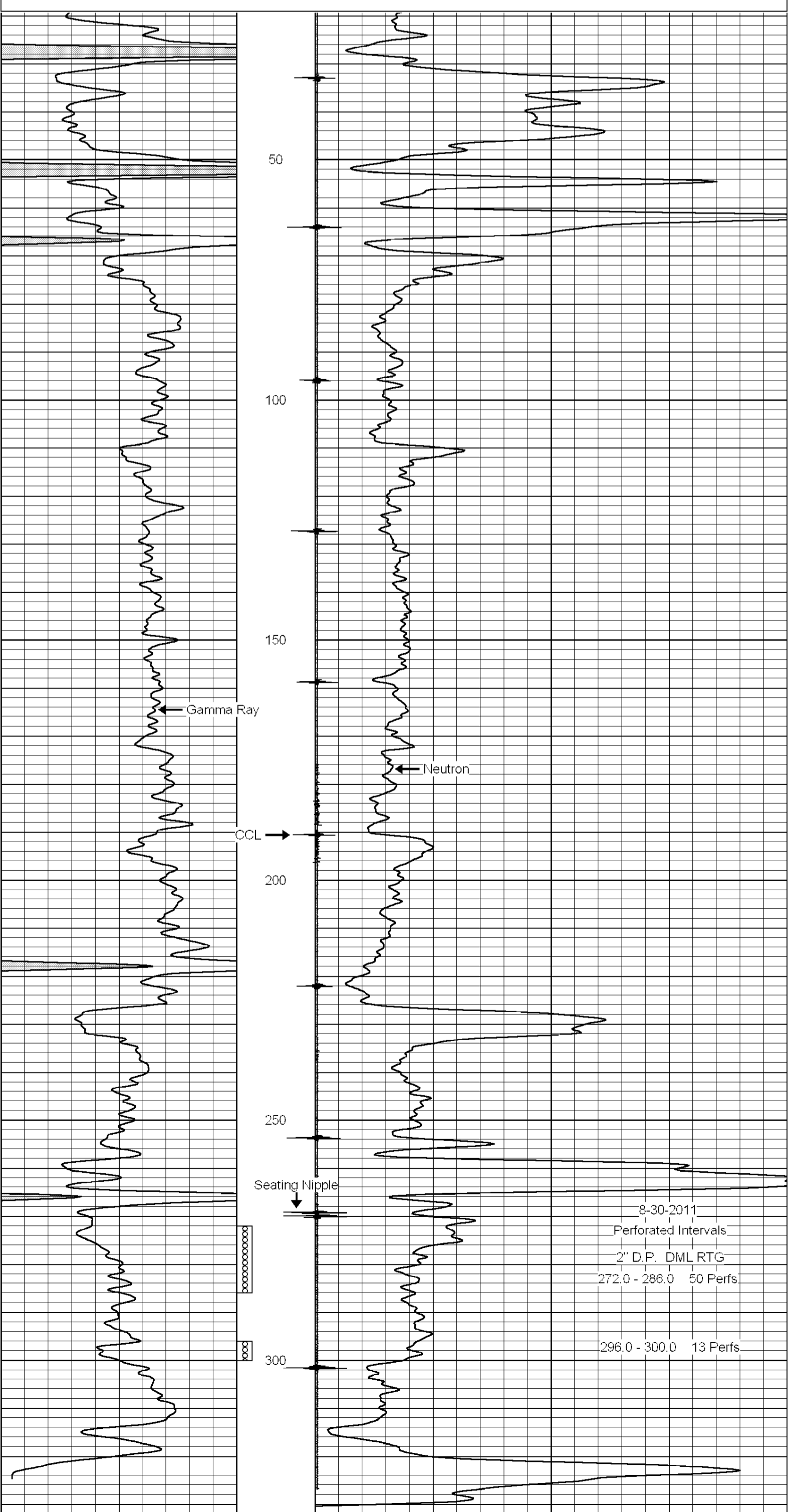
All interpretations are opinions based on inferences from electrical or other measurements and we cannot and do not guarantee the accuracy or correctness of any interpretation, and we shall not, except in the case of gross or willful negligence on our part, be liable or responsible for any loss, costs, damages, or expenses incurred or sustained by anyone resulting from any interpretation made by any of our officers, agents or employees. These interpretations are also subject to our general terms and conditions set out in our current Price Schedule.

**Comments**

Drilling Contractor :  
**Dale Jackson Production Company**

Database File: bakr10dn.db  
 Dataset Pathname: pass1  
 Presentation Format: gr-n-ccl  
 Dataset Creation: Mon Jun 06 07:33:51 2011 by Log Warrior Version 6.6  
 Charted by: Depth in Feet scaled 1:240

0	Gamma Ray	150	100	Neutron	1800
150	Gamma Ray	300			



0	Gamma Ray	150	100	Neutron	1800
150	Gamma Ray	300			