



MIDWEST SURVEYS
 LOGGING - PERFORATING - CONSULTING SERVICES
 P.O. Box 68, Osawatomie, KS 66064
 913 / 755 - 2128

GAMMA RAY / NEUTRON / CCL

File No. _____

Company **Laymon Oil II, LLC.**

Well **East J.R. Lewis No. 13-11**

Field **Iola**

County **Allen** State **Kansas**

Location **1815' FSL & 2145' FEL**

NE-SW-NW-SE

Other Services
Perforate

Sec. 12 Typ. 24S Rge. 18e Elev. N/A
 Permian/Dunm GL GL
 Log Measured From GL
 Drilling Measured From GL

Date 07-01-2011

Run Number One

Depth Logger 10238.0

Bottom Logged Interval 10207

Top Log Interval 20.0

Fluid Level Full

Type Fluid Water

Density / Viscosity NA

Salinity - PPM Cl NA

Max. Recorded Temp NA

Estimated Cement Top 0.0

Equipment No. 107

Recorded By Steve Munsch

Location 107

Checked By Mike Laymon

| BORE-HOLE RECORD | | | | CASING RECORD | | | |
|------------------|--------|------|---------|---------------|--------|------|--------|
| Run | BIT | FROM | TO | SIZE | WEIGHT | FROM | TO |
| One | 12.25" | 0.0 | 40.0 | 8.625" | 0.0 | 0.0 | 40.0 |
| Two | 6.75" | 40.0 | 10238.0 | 4.50" | 0.0 | 0.0 | 1025.0 |

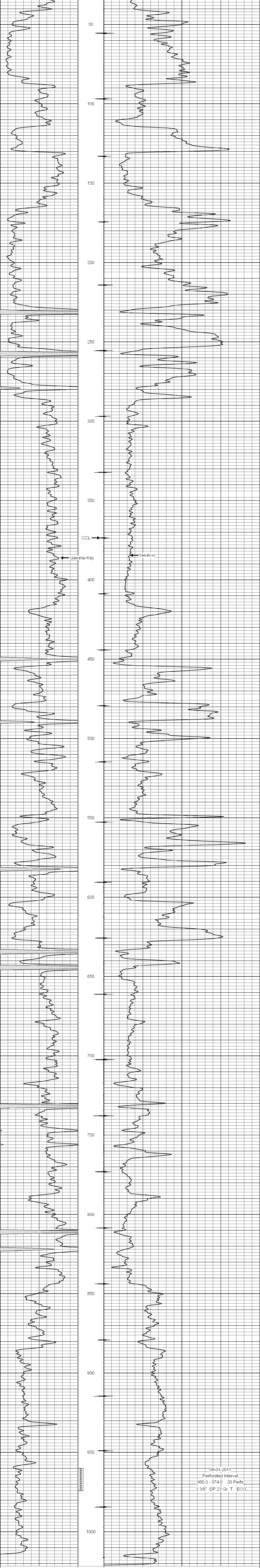
<<< Fold Here >>>

All interpretations are opinions based on inferences from electrical or other measurements and we cannot and do not guarantee the accuracy or correctness of any interpretation, and we shall not, except in the case of gross or willful negligence on our part, be liable or responsible for any loss, costs, damages, or expenses incurred or sustained by anyone resulting from any interpretation made by any of our officers, agents or employees. These interpretations are also subject to our general terms and conditions set out in our current Price Schedule.

Comments

Drilling Contractor :
Laymon Oil II, LLC

Database File: lewis13e.db
 Dataset Pathname: pass1
 Presentation Format: gr-n-ccl
 Dataset Creation: Fri Jul 01 08:51:53 2011 by Log Std Casedhole 07122
 Charted by: Depth in Feet scaled 1:240



08-01-2011
 Perforated Interval
 960.0 - 974.0 30 Perfs
 3 3/8" DP 23 Gr. T. ECG