



GAMMA-RAY
NEUTRON
CCL LOG

Company VESS OIL CORPORATION
Well MOTHE #7
Field HODGEMAN
County HODGEMAN
State KANSAS

Company VESS OIL CORPORATION
Well MOTHE #7 **Production Dept.**
Field **File Copy**
County HODGEMAN State KANSAS
Location: SEC: 2 TWP: 22S RGE: 24W Other Services
1250' FNL & 1300' FWL
Permanent Datum GROUND LEVEL Elevation 2431
Log Measured From KELLY BUSHING 5' AGL K.B. 2436
Drilling Measured From KELLY BUSHING D.F. G.L. 2431

Date	AUGUST 16, 2011		
Run Number	ONE		
Depth Driller	4658		
Depth Logger	4658		
Bottom Logged Interval	4657		
Top Log Interval	SURFACE		
Fluid Level	385		
Type Fluid	OILWATER		
Density / Viscosity			
Max. Recorded Temp			
Estimated Cement Log			
Time Well Ready			
Time Logger on Bottom			
Equipment Number	PT-08		
Location	HAYS		
Recorded By	JEREMY SCHNEIDER		
Witnessed By	MR JOE RUPP		
	Borehole Record		Tubing Record
Run Number	Bit	Size	Weight From To
ONE	12.25	400	
TWO	7.875	400	
Casina Record	Size	Top	Bottom

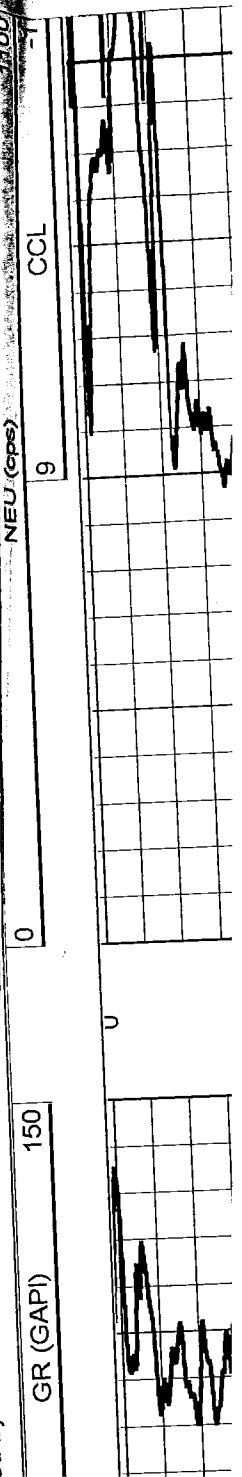
Interpretations are opinions based on inferences from electrical or other measurements and we cannot and do not guarantee the accuracy or correctness of any interpretation, and we shall not, except in the case of gross or willful negligence on our part, be liable or responsible for any loss, costs, damages, or expenses incurred or suffered by anyone resulting from any interpretation made by any of our officers, agents or employees. These interpretations are also subject to our general terms and conditions set out in our current Price Schedule.

Comments

Perf-Tech
Wireline Services

UPPER STAGE

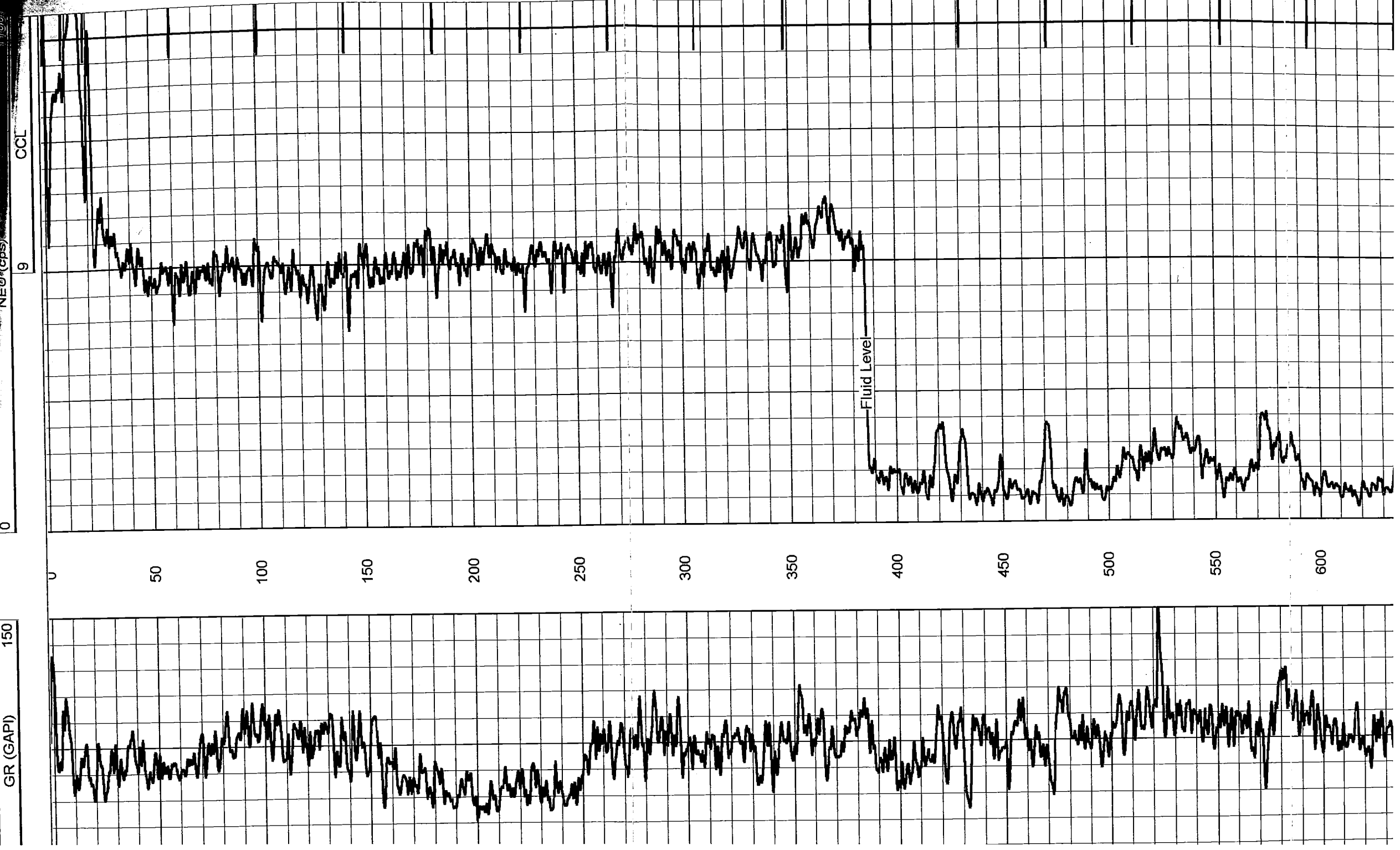
Case File: 08161108.db
Net Pathname: pass4
Initiation Format: gr-n-ccl
Net Creation: Tue Aug 16 15:17:11 2011 by Log Warrior Version 6.6

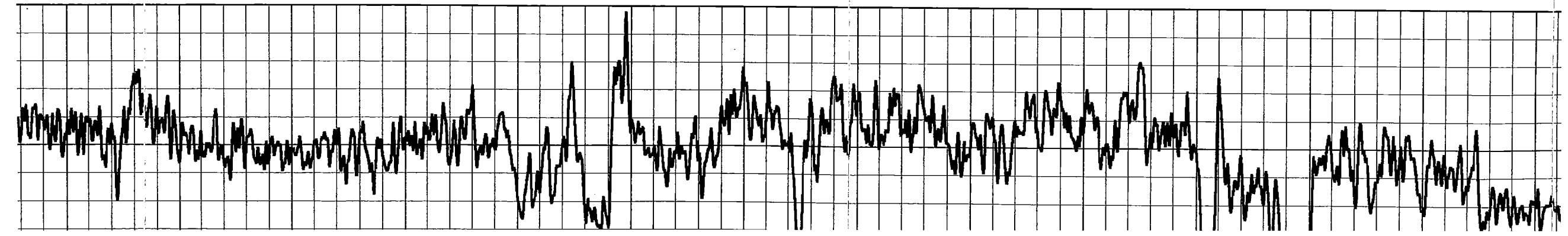
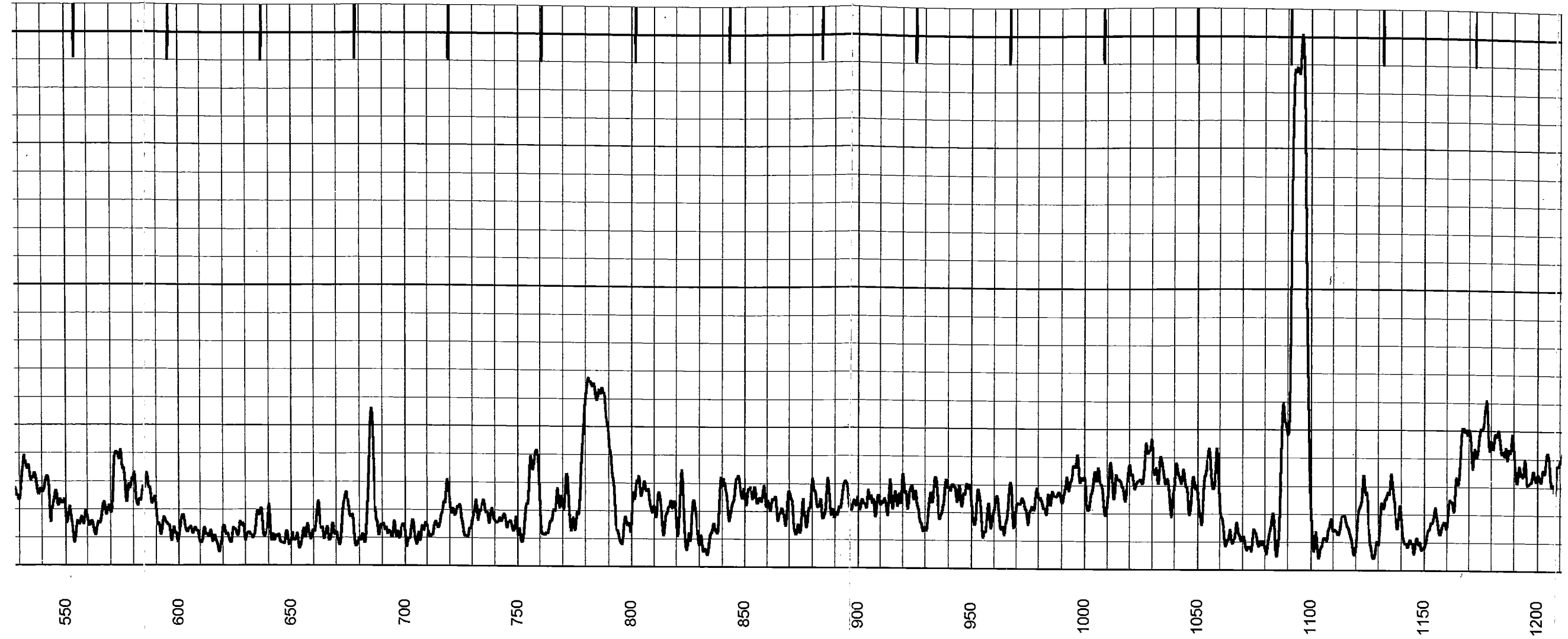


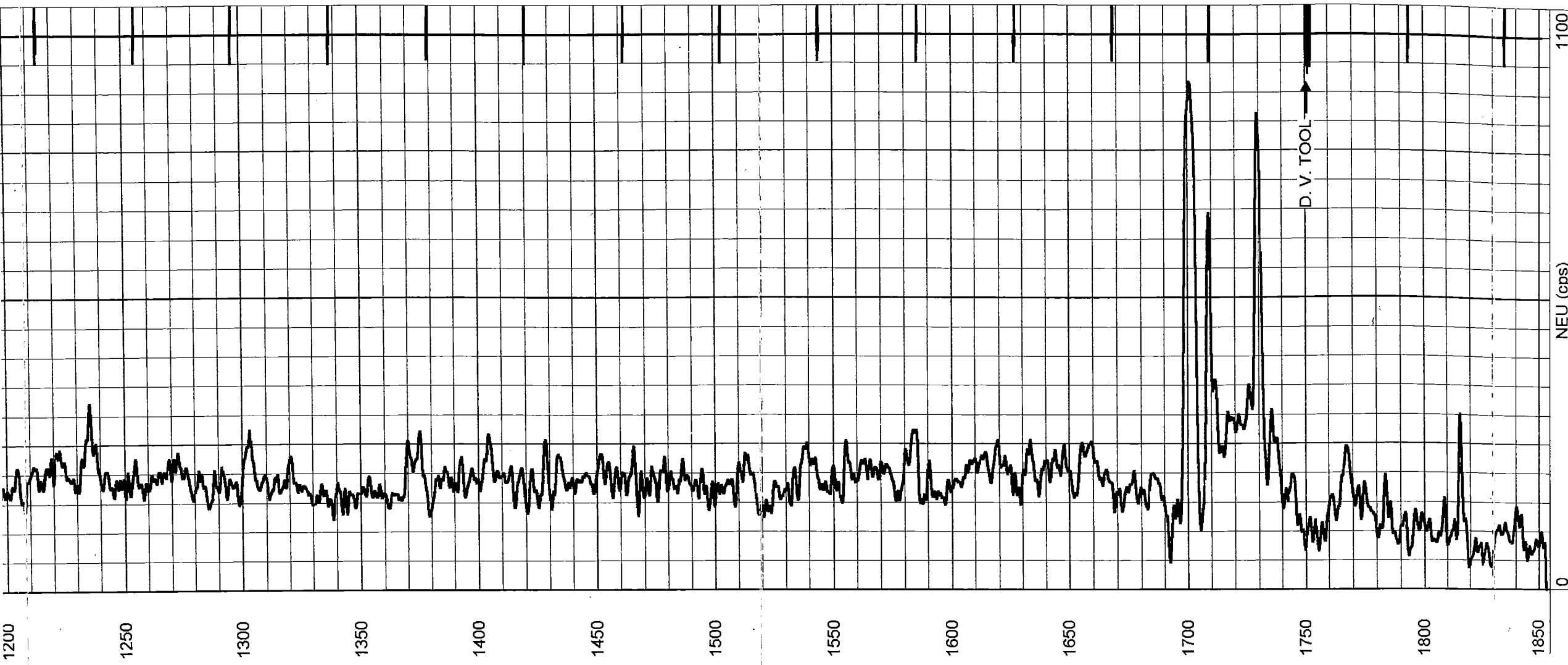
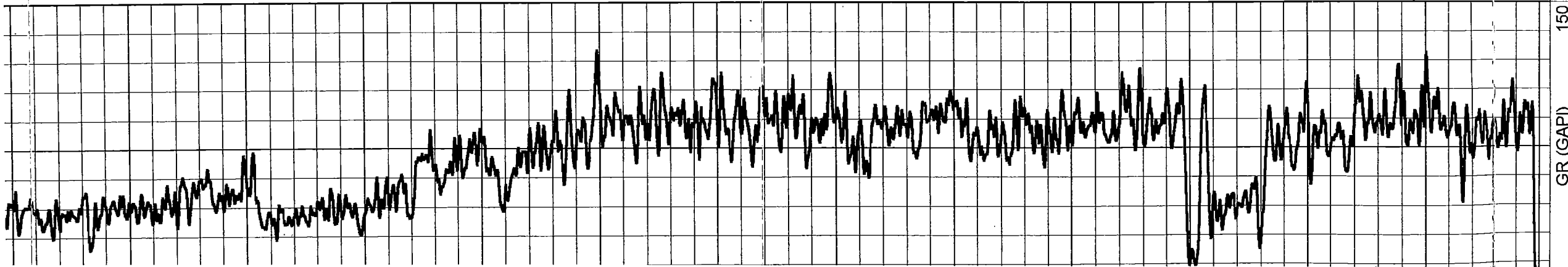
SCENARIO UNIT: 91-11-001
Asset Creation: Tue Aug 16 15:17:11 2011 by Log Warrior Version 6.6
Attended by: Dept:m, Feet:scaled T:600

NEO (cps)

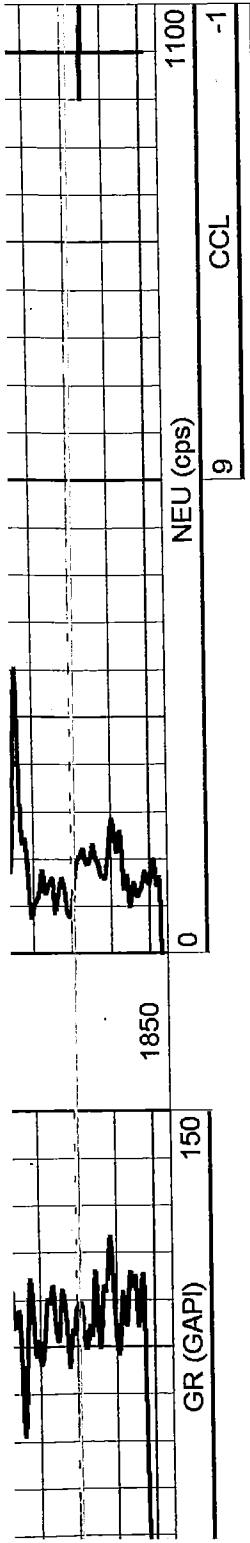
GR (GAPI)







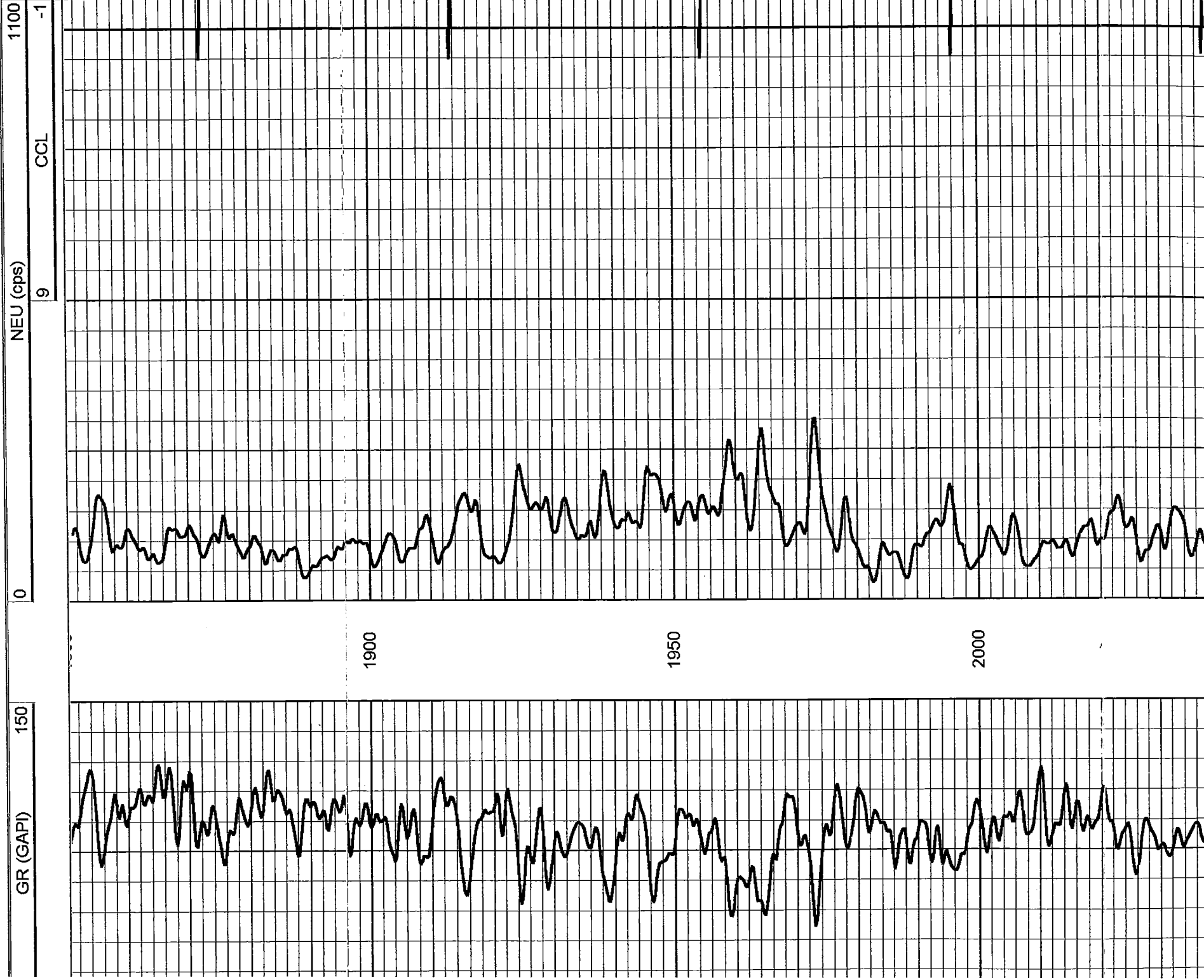
1200 1250 1300 1350 1400 1450 1500 1550 1600 1650 1700 1750 1800 1850

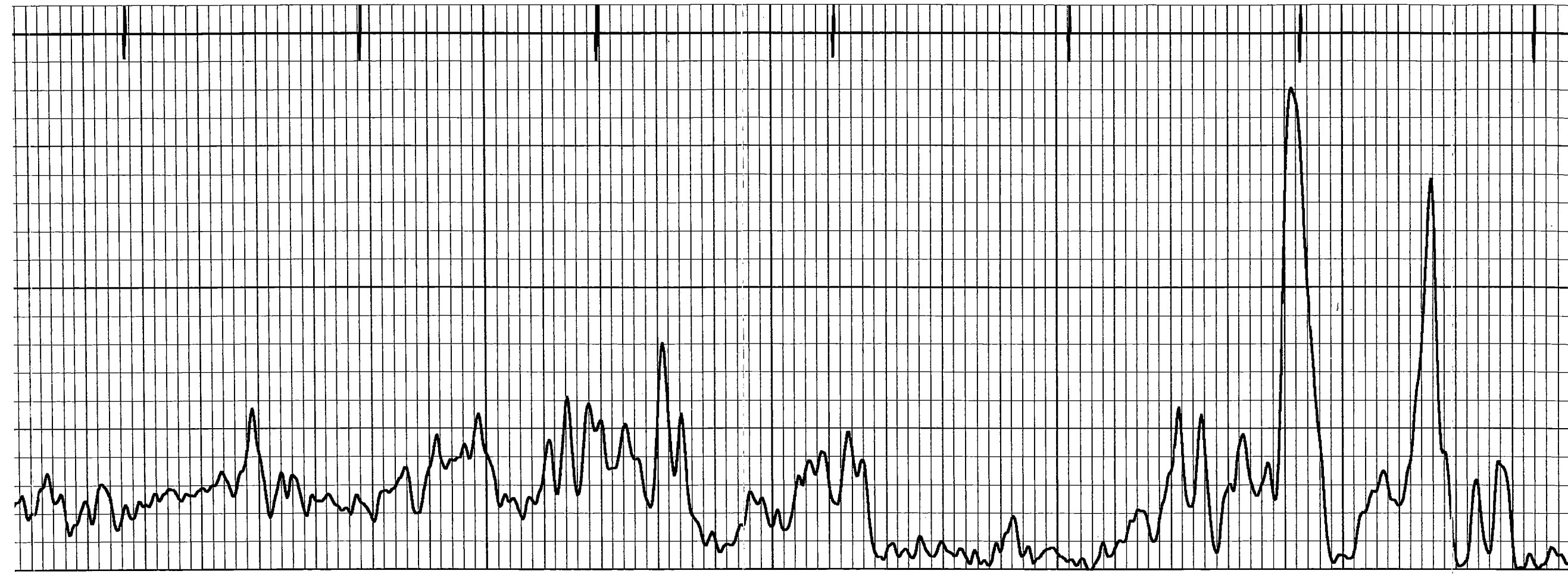


Perf-Tech
Wireline Services

MAIN PASS

Database File: 08161108.db
 Dataset Pathname: pass3
 Representation Format: gr-n-cc1
 Dataset Creation: Tue Aug 16 14:31:54 2011 by Log Warrior Version 6.6
 Started by: Depth in Feet scaled 1:240





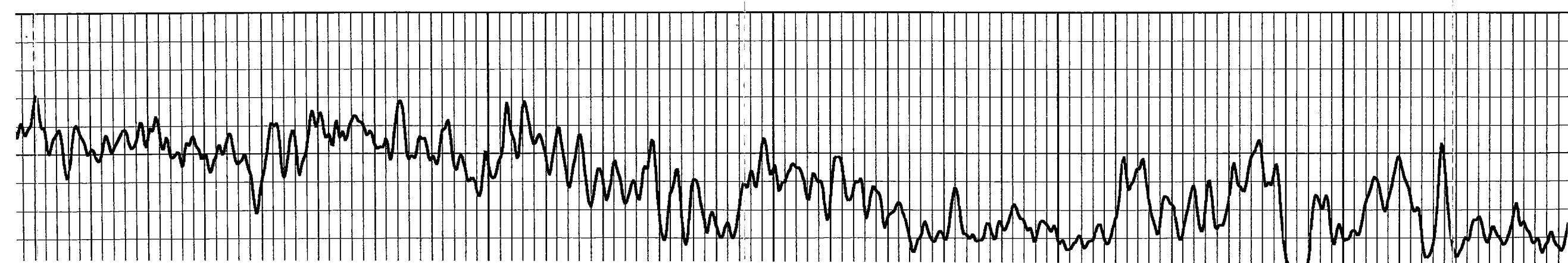
2050

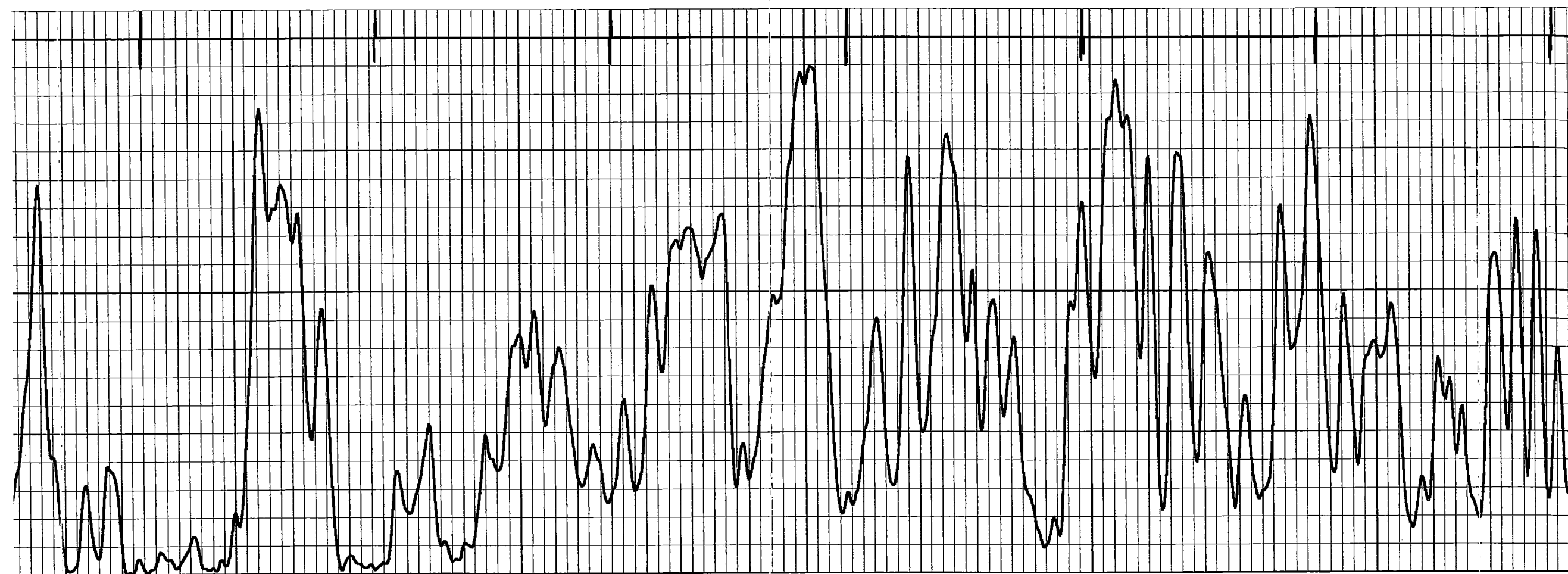
2100

2150

2200

2250





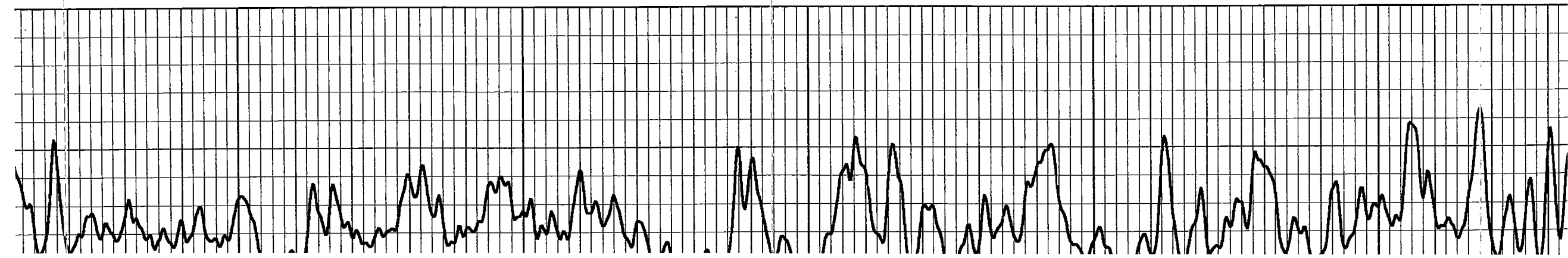
2300

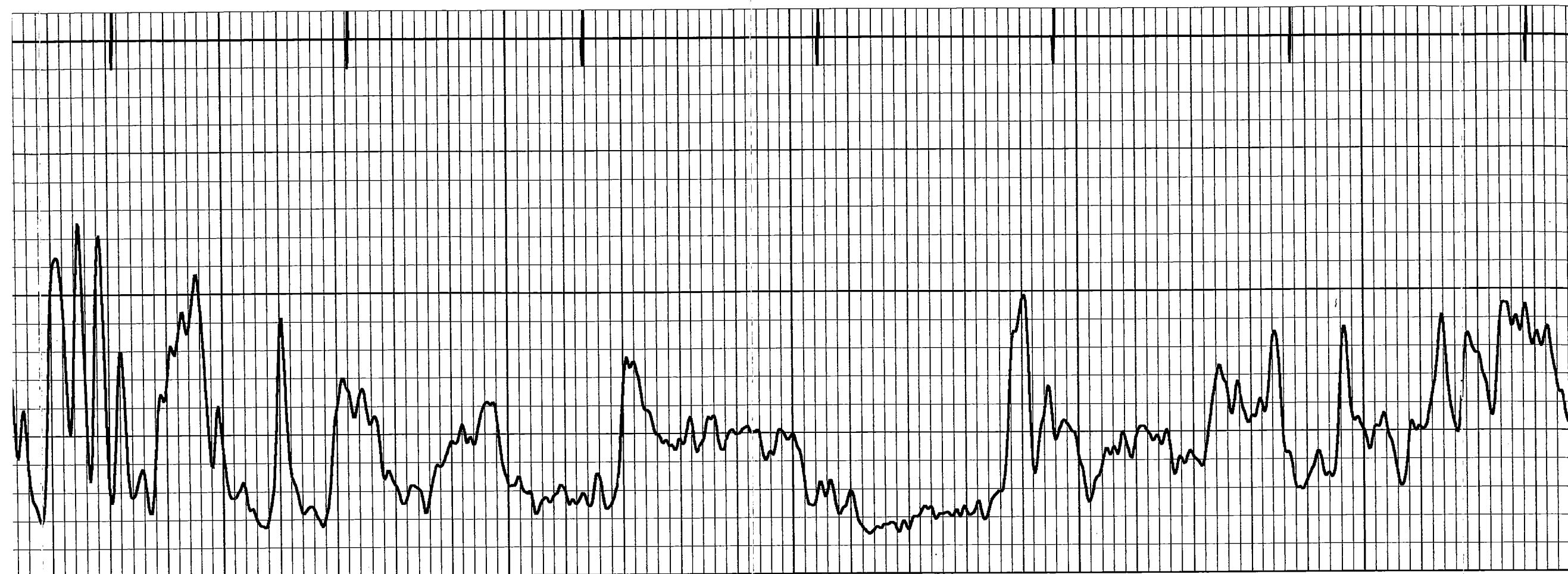
2350

2400

2450

2500





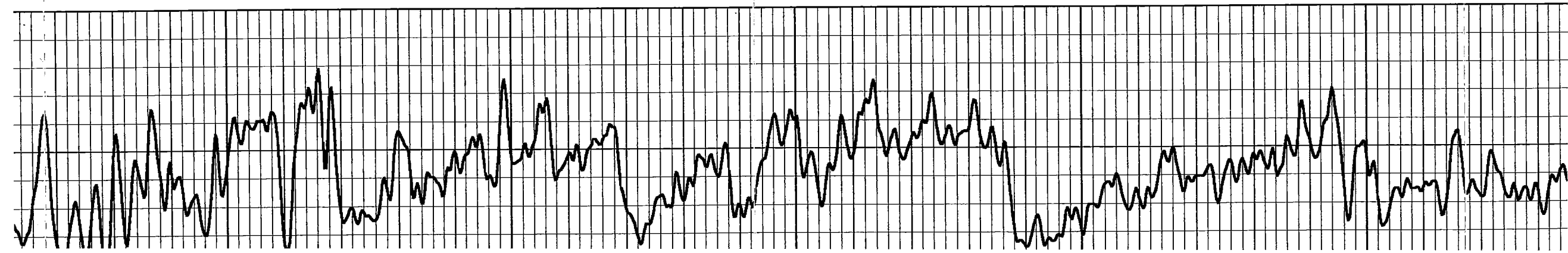
2550

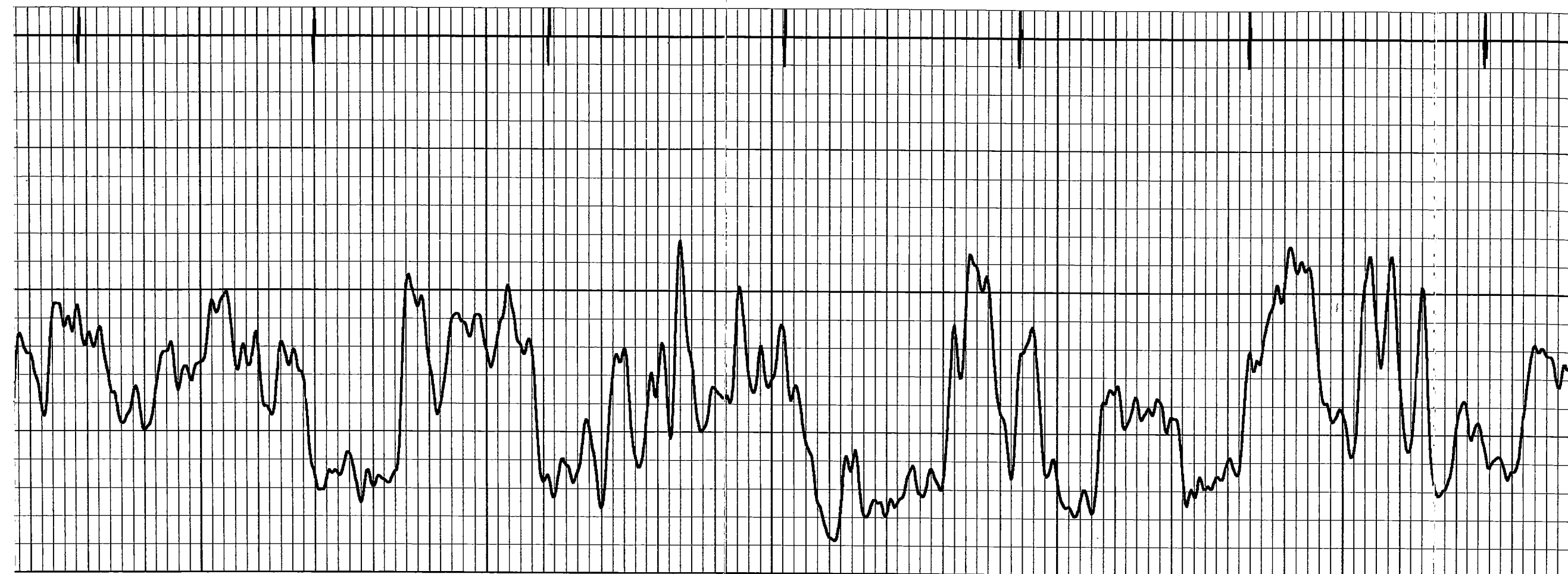
2600

2650

2700

2750





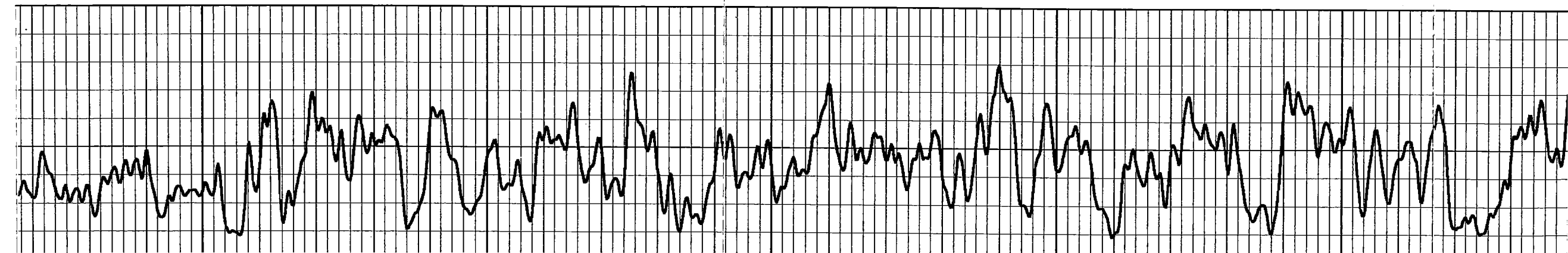
2800

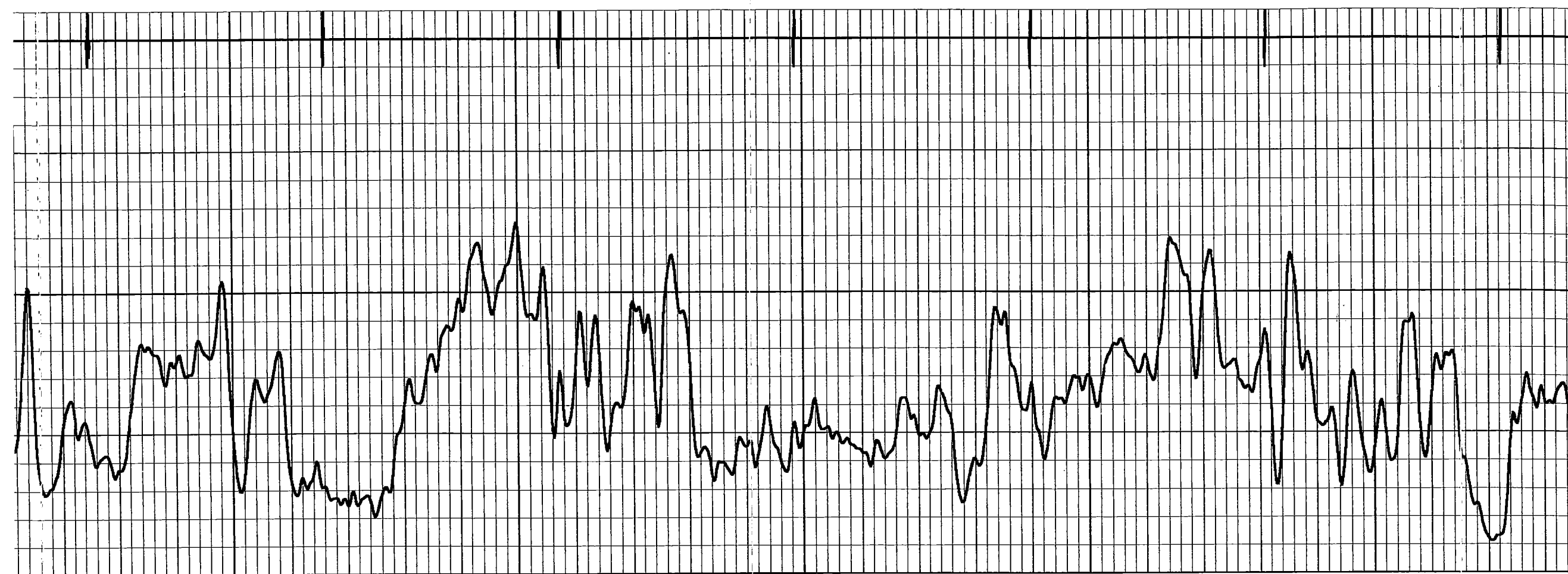
2850

2900

2950

3000





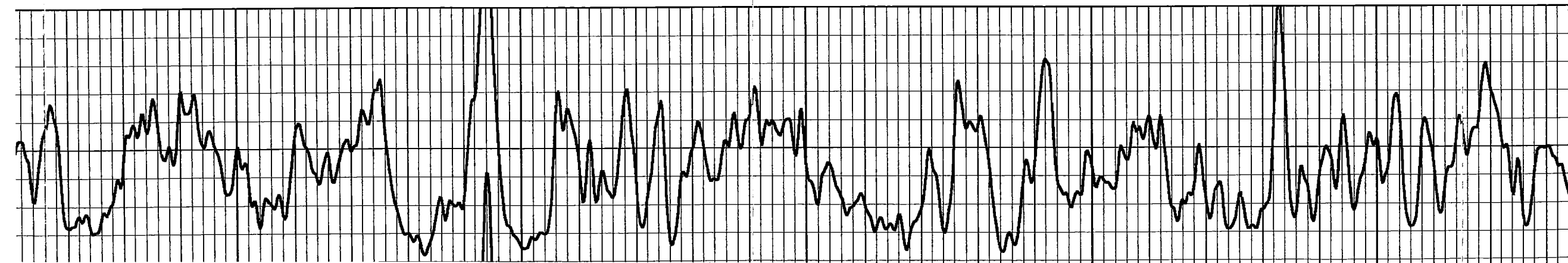
3050

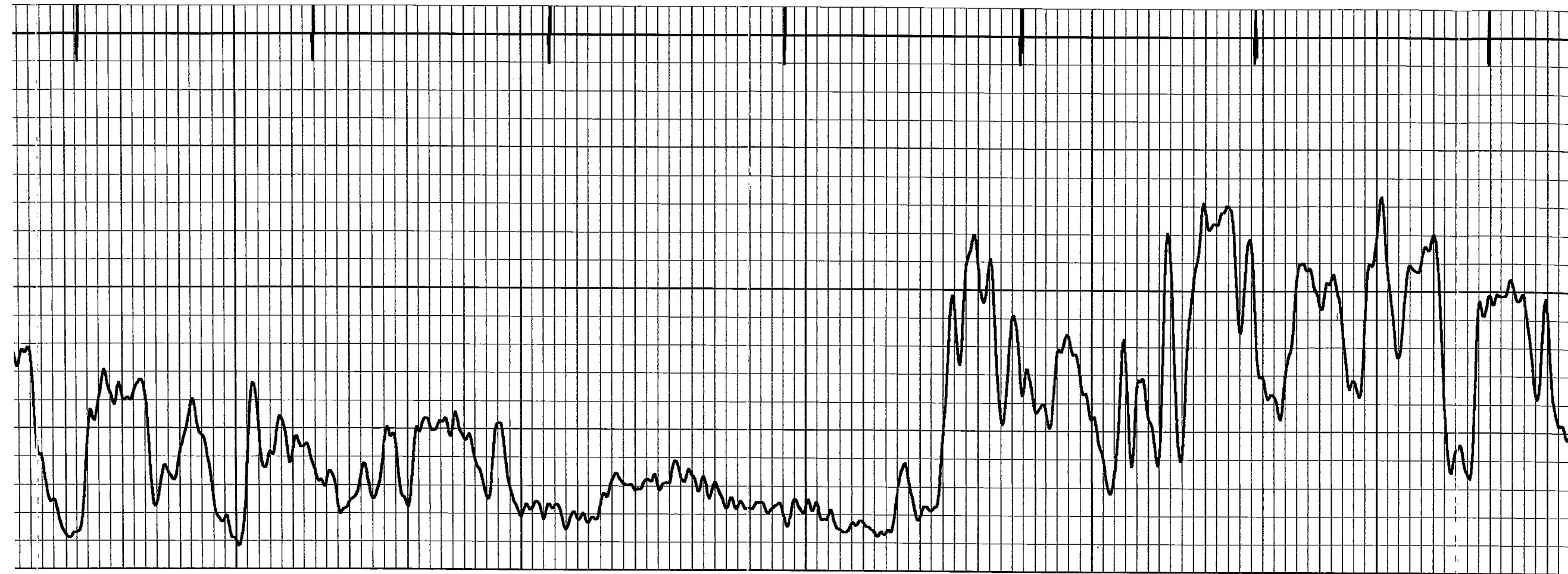
3100

3150

3200

3250





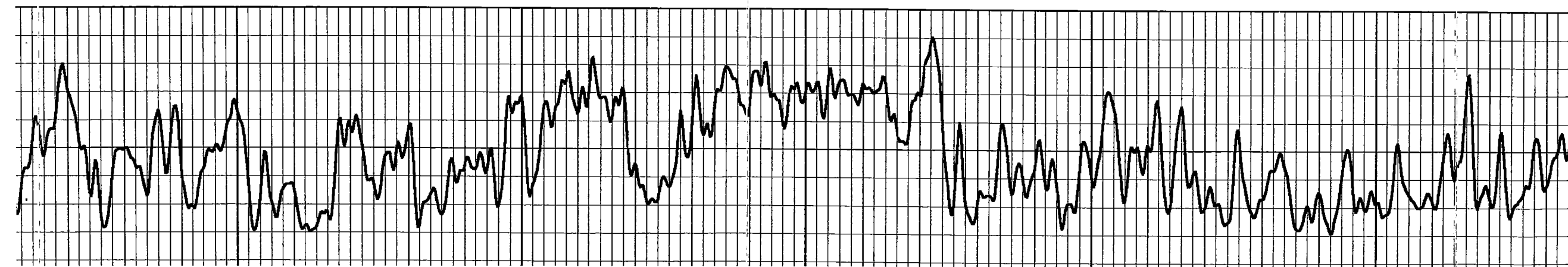
3300

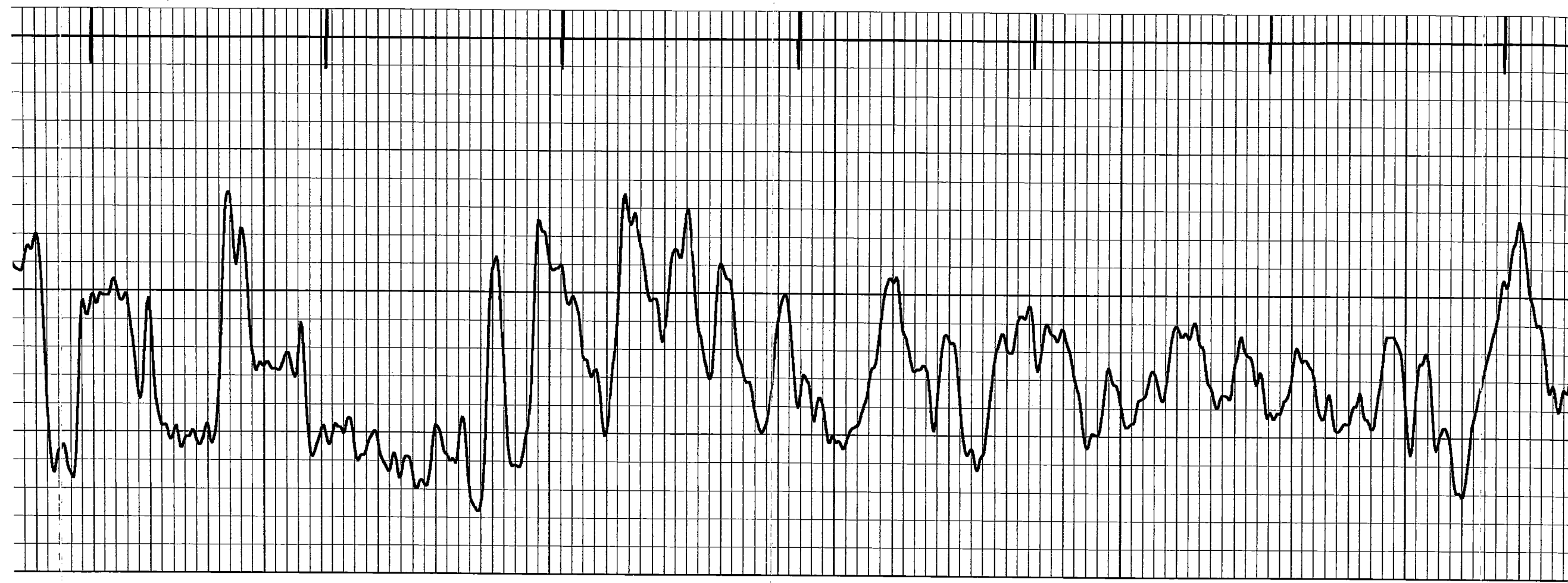
3350

3400

3450

3500





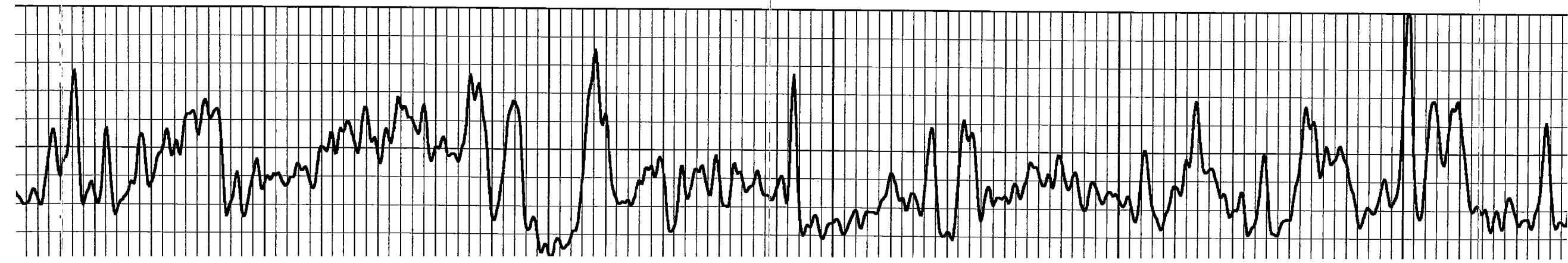
3550

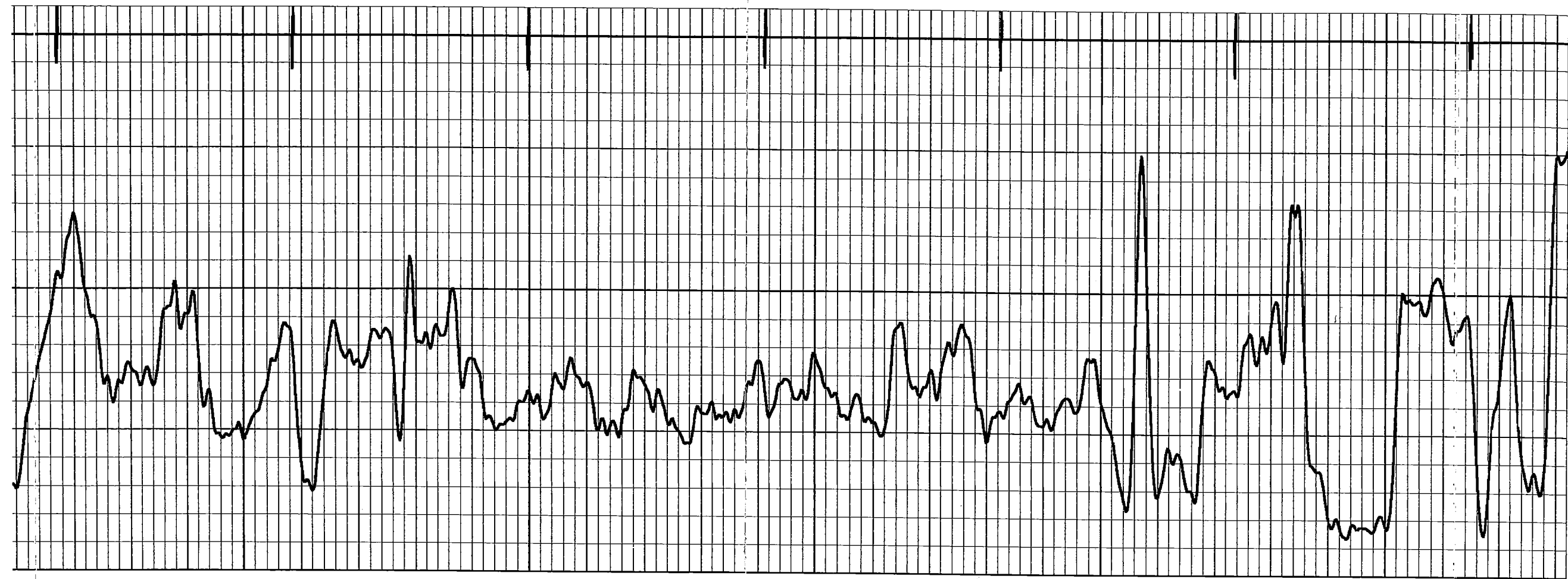
3600

3650

3700

3750





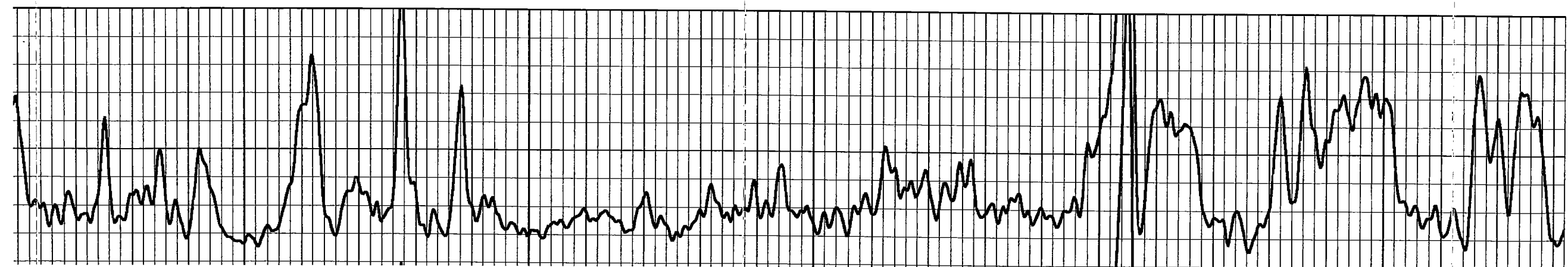
3800

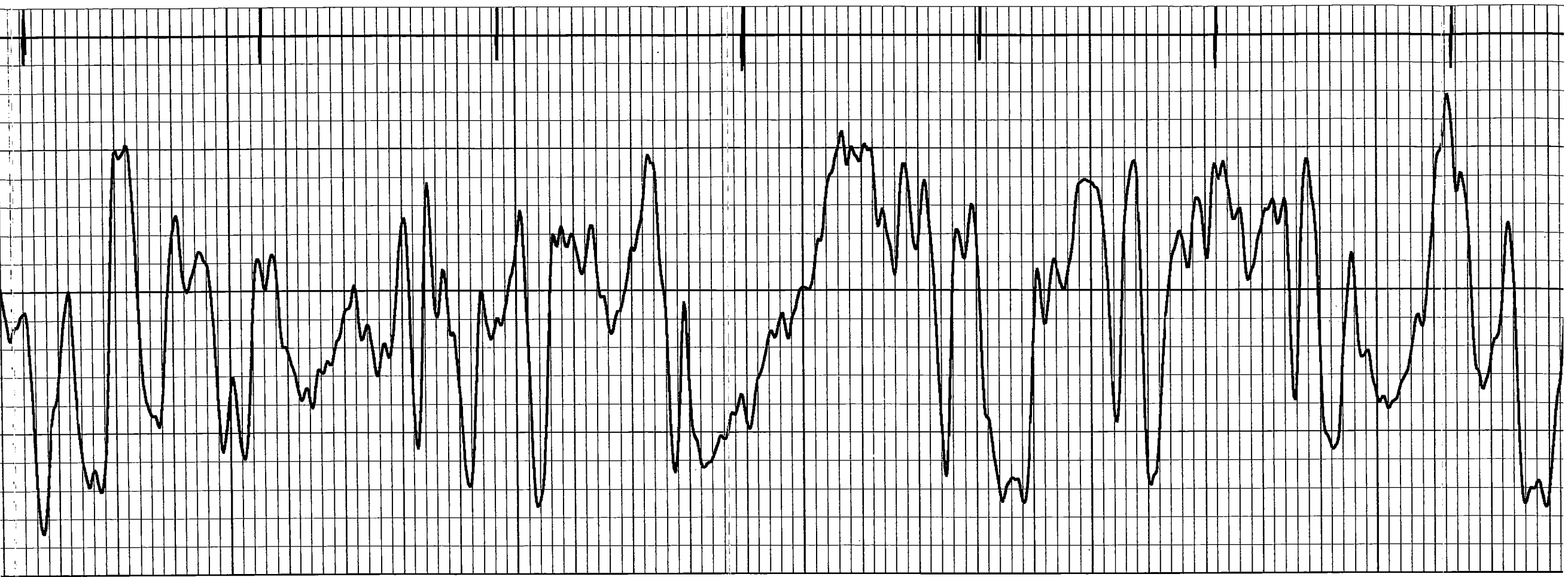
3850

3900

3950

4000





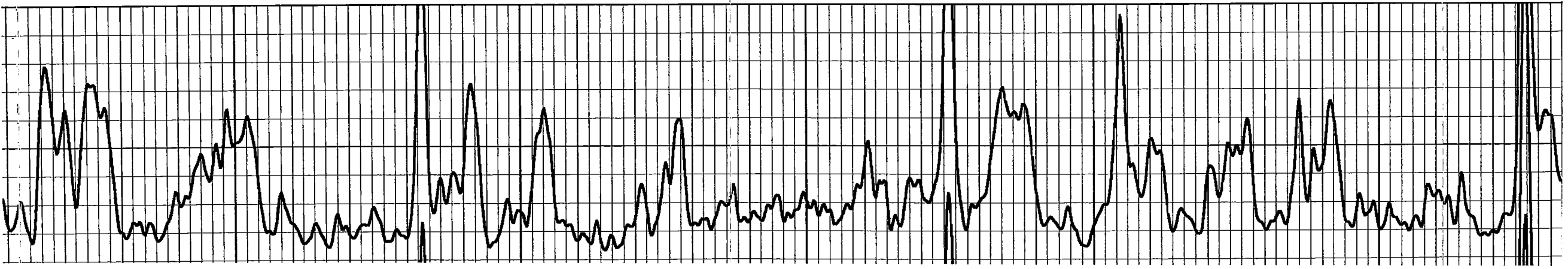
4050

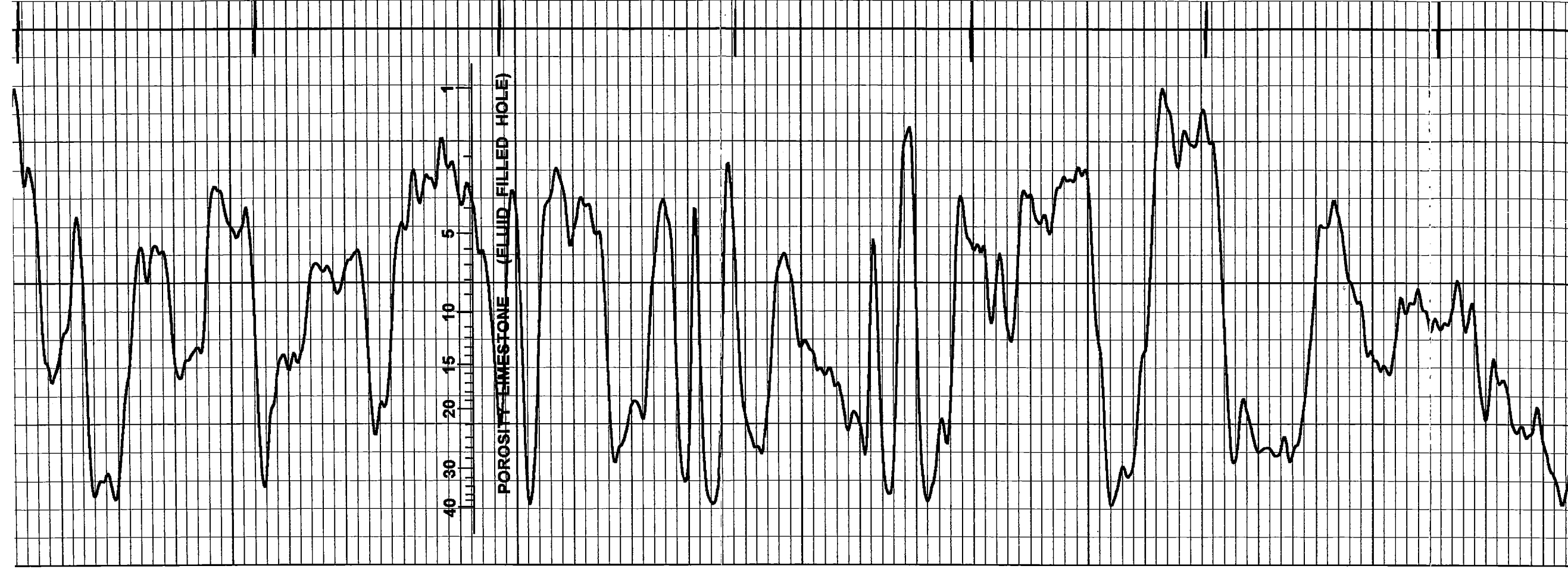
4100

4150

4200

4250





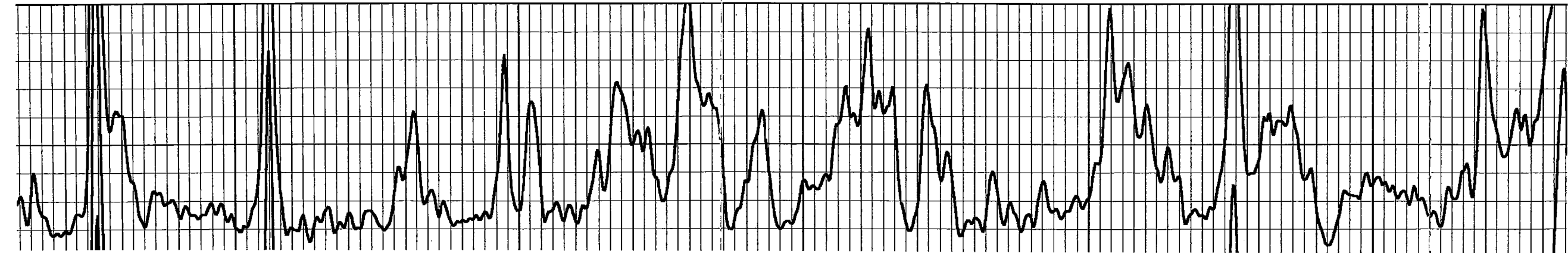
4300

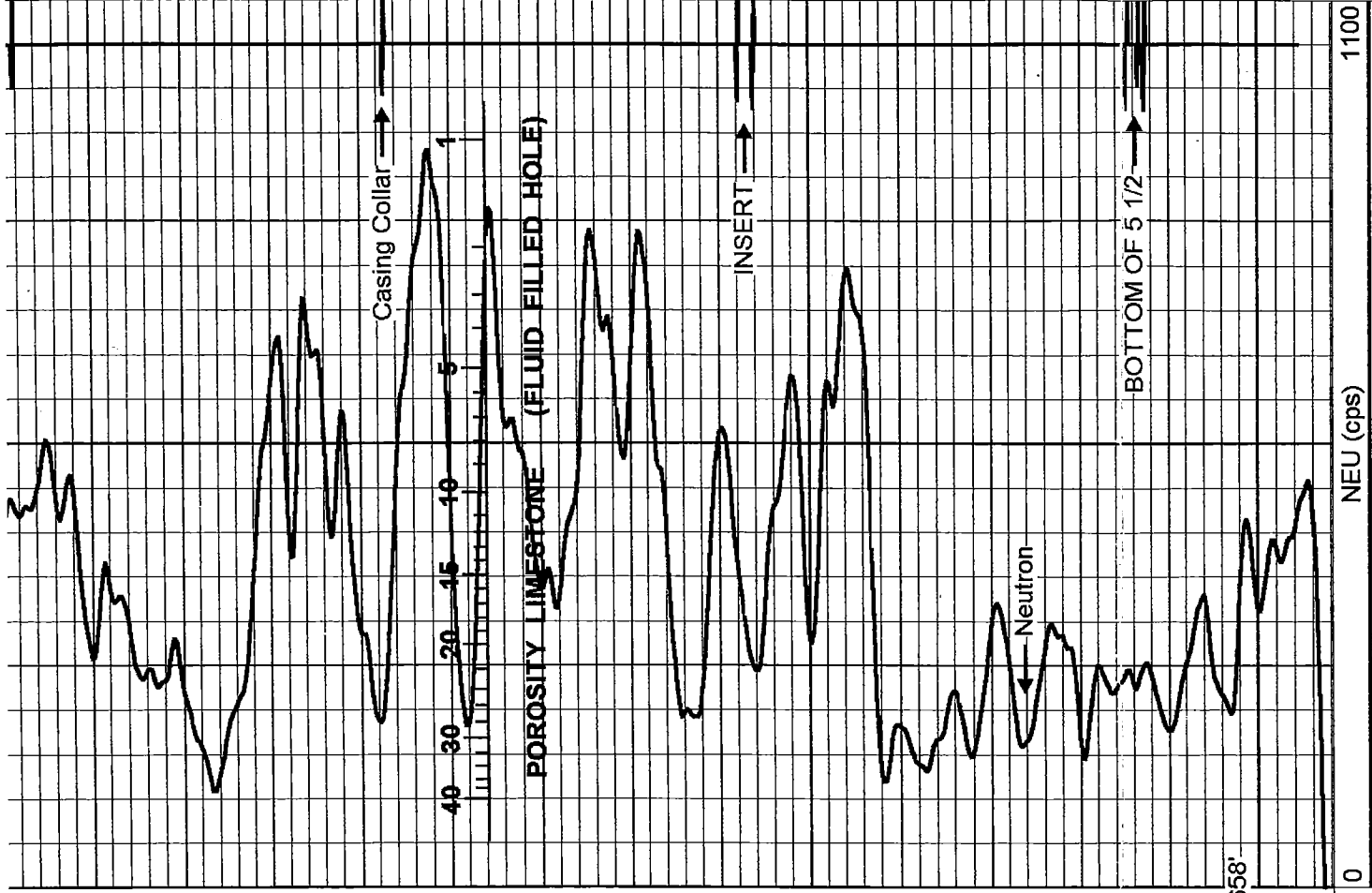
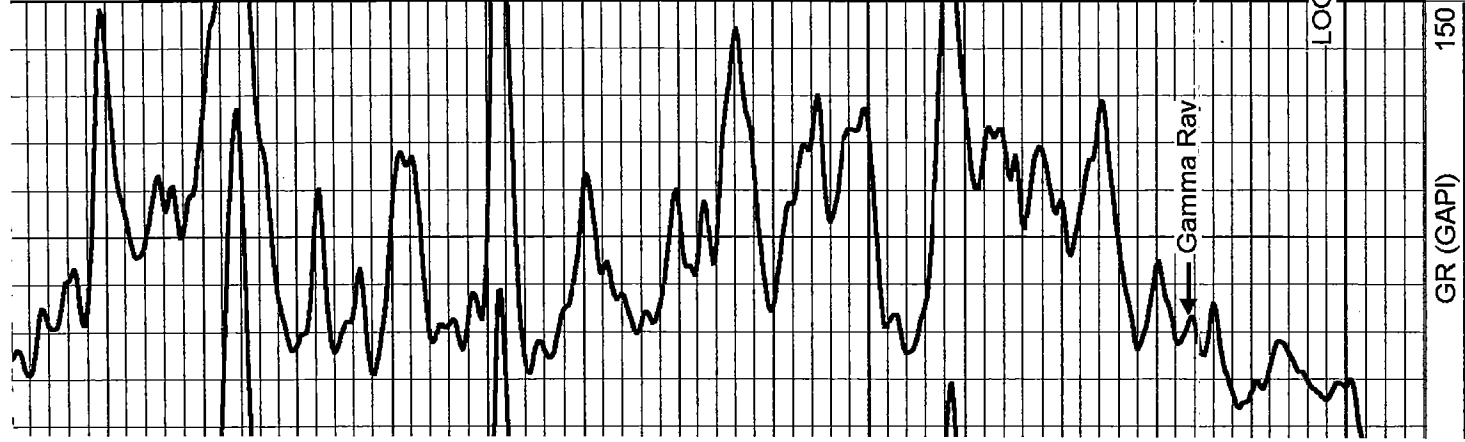
4350

4400

4450

4500



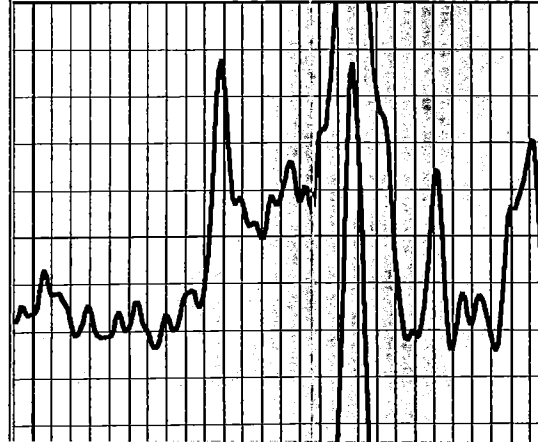


Perf-Tech
Wireline Services

REPEAT SECTION

Database File: 08161108.db
 Dataset Pathname: pass2
 Presentation Format: gr-n-cci
 Dataset Creation: Tue Aug 16 14:26:40 2011 by Log Warrior Version 6.6
 Charted by: Depth in Feet scaled 1:240

GR (GAPI) 150



NEU (cps) 1100

