



Pioneer Energy Services

Dual Induction Log

15-101-22,439-00-00

API No.

Company Larson Engineering, Inc.

Well Riley Unit #1-10

Field Wildcat

County Lane State

Kansas

Location

NW NE NE SE
2573' FSL & 517' FEL

Sec: 10

Twp: 18S

Rge: 29W

Permanent Datum Ground Level
Log Measured From Kelly Bushing
Drilling Measured From Kelly Bushing

Elevation 2786
7 Ft. Above Perm. Datum

Other Services
CNL/CDL
MEL

Date

5/14/2013

Run Number

One

Depth Driller

4635

Depth Logger

4637

Bottom Logged Interval

4636

Top Log Interval

250

Casing Driller

8.625 @ 273

Casing Logger

272

Bit Size

7.875

Type Fluid in Hole

Chemical

Salinity, ppm CL

3,700

Density / Viscosity

9.3 55

pH / Fluid Loss

10.0 7.1

Source of Sample

Flowline

.7 @ 80

.53 @ 80

.95 @ 80

Charts

.46 @ 122

5 Hours

122

17

Hays

C. Desai

Vern Schrag

<<< Fold Here >>>

All interpretations are opinions based on inferences from electrical or other measurements and we cannot and do not guarantee the accuracy or correctness of any interpretation, and we shall not, except in the case of gross or willful negligence on our part, be liable or responsible for any loss, costs, damages, or expenses incurred or sustained by anyone resulting from any interpretation made by any of our officers, agents or employees. These interpretations are also subject to our general terms and conditions set out in our current Price Schedule.

Comments

Thank you for using Pioneer Energy Services
www.pioneerenergy.com
785 625 3858

Dighton KS, 2 W to Jagger Rd,
1 1/2 N, W Into

Database File: c:\warrior\data\larson_riley unit #1-10\larsonhd.db
Dataset Pathname: dil\larstk
Presentation Format: dil2in
Dataset Creation: Tue May 14 00:43:39 2013
Charted by: Depth in Feet scaled 1:600

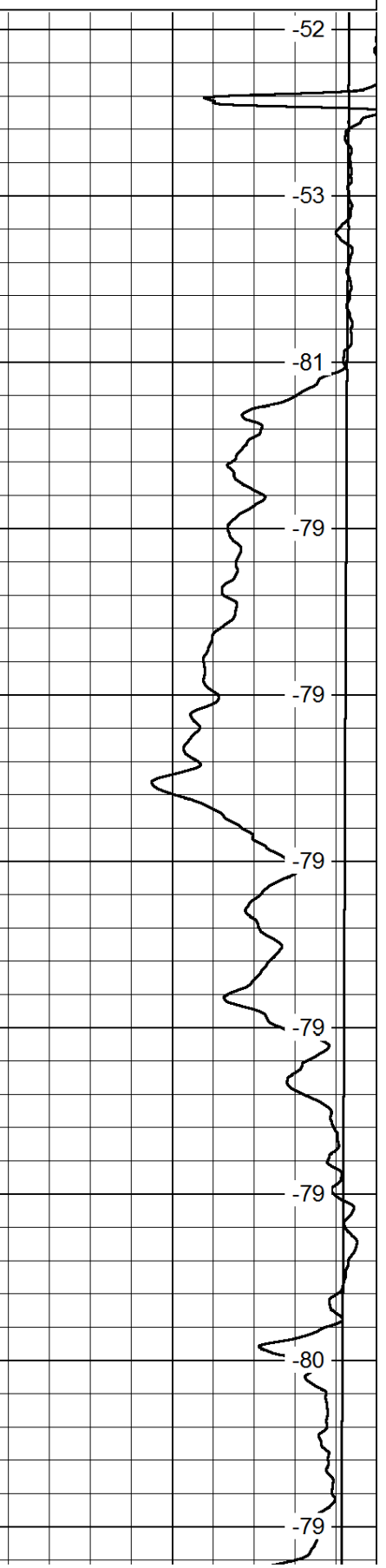
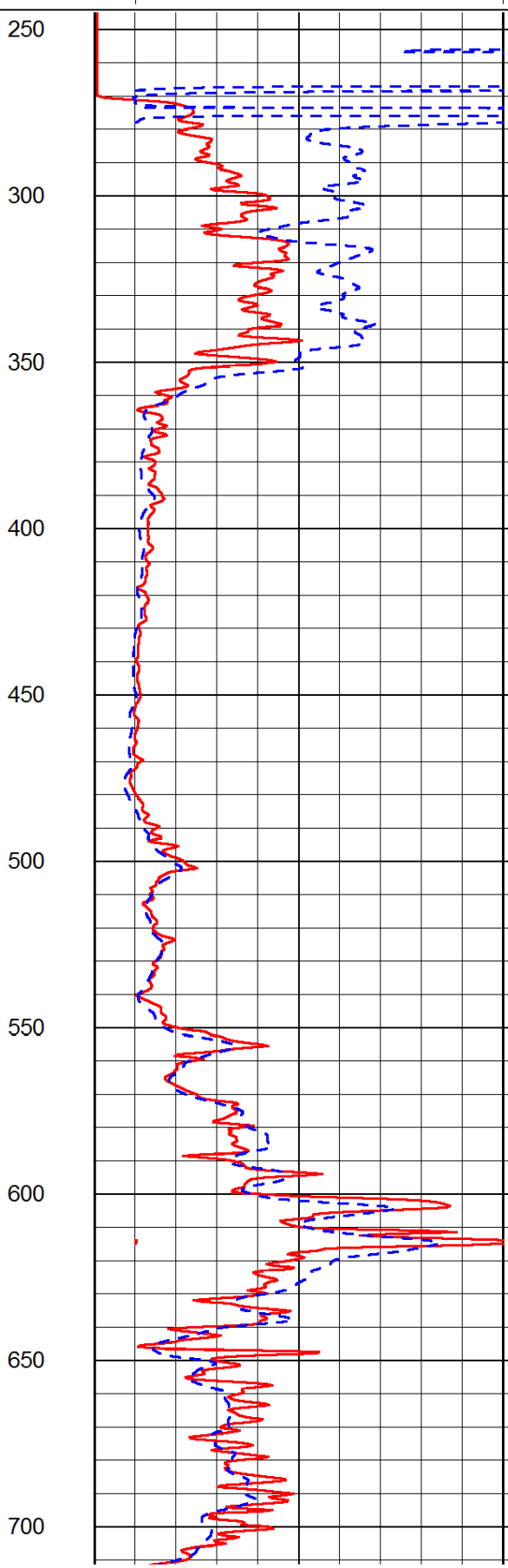
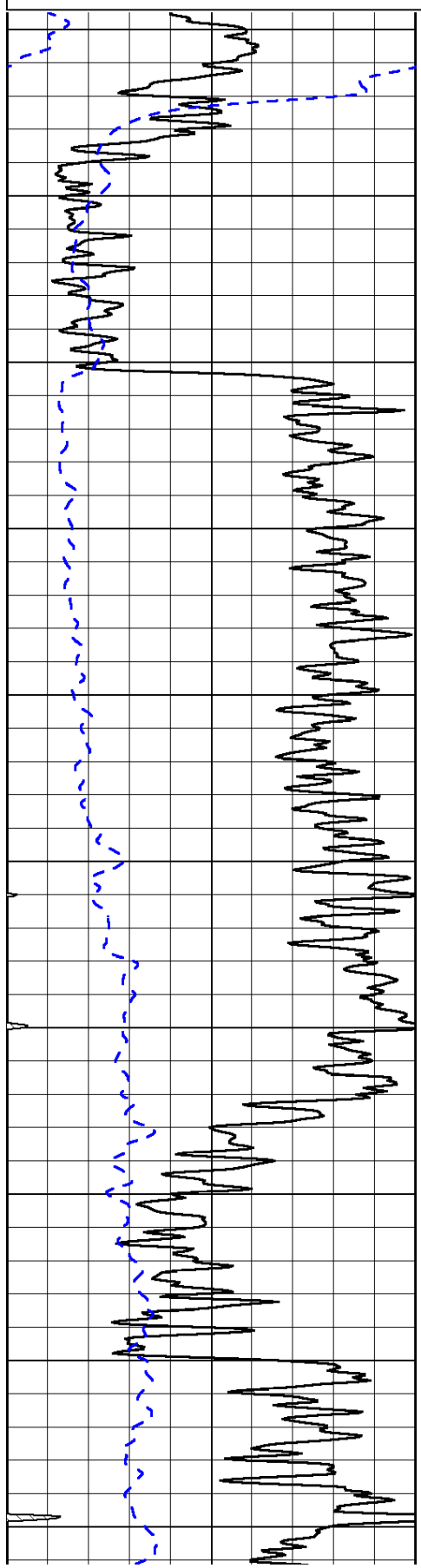
0	Gamma Ray	150
-200	SP (mV)	0

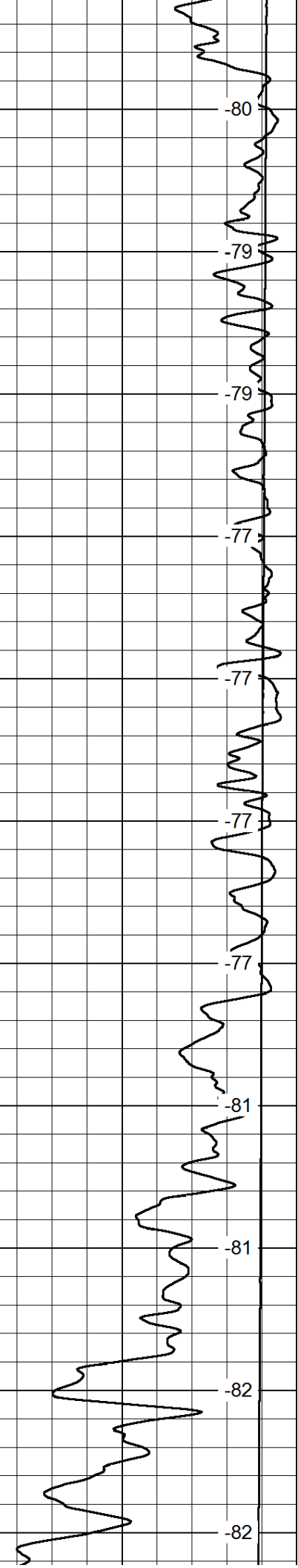
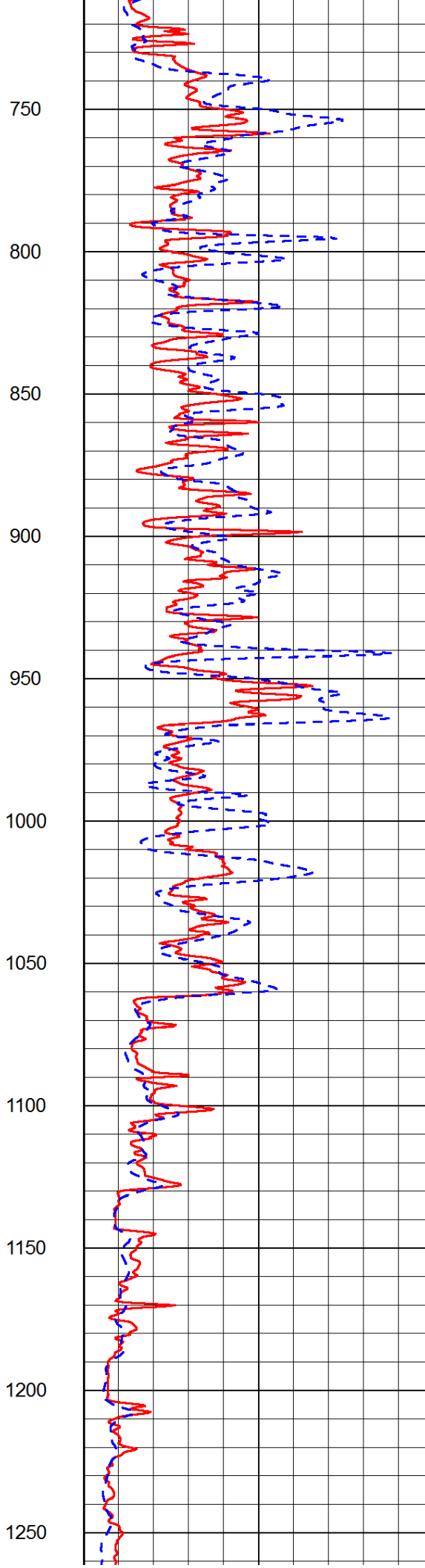
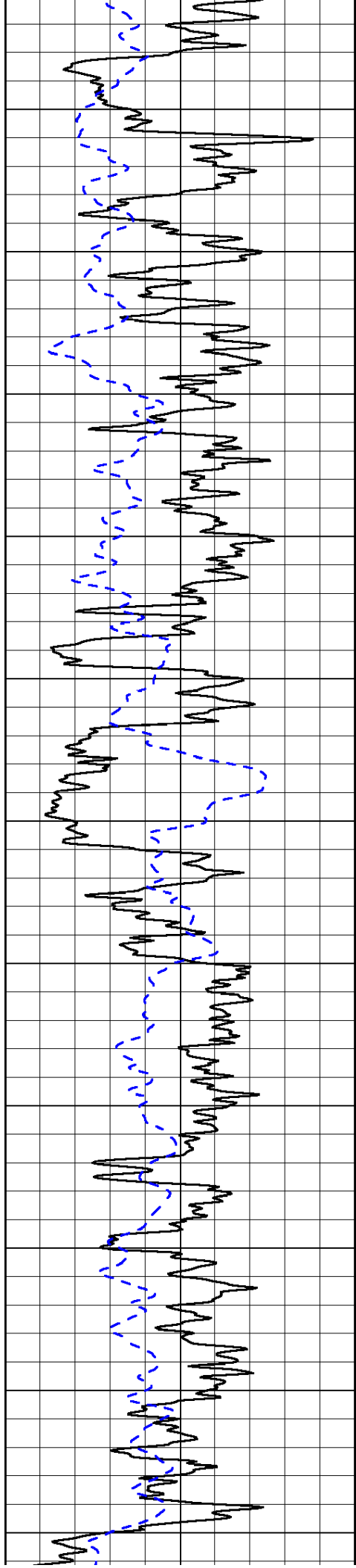
0	Shallow Resistivity	50
0	Deep Resistivity	50

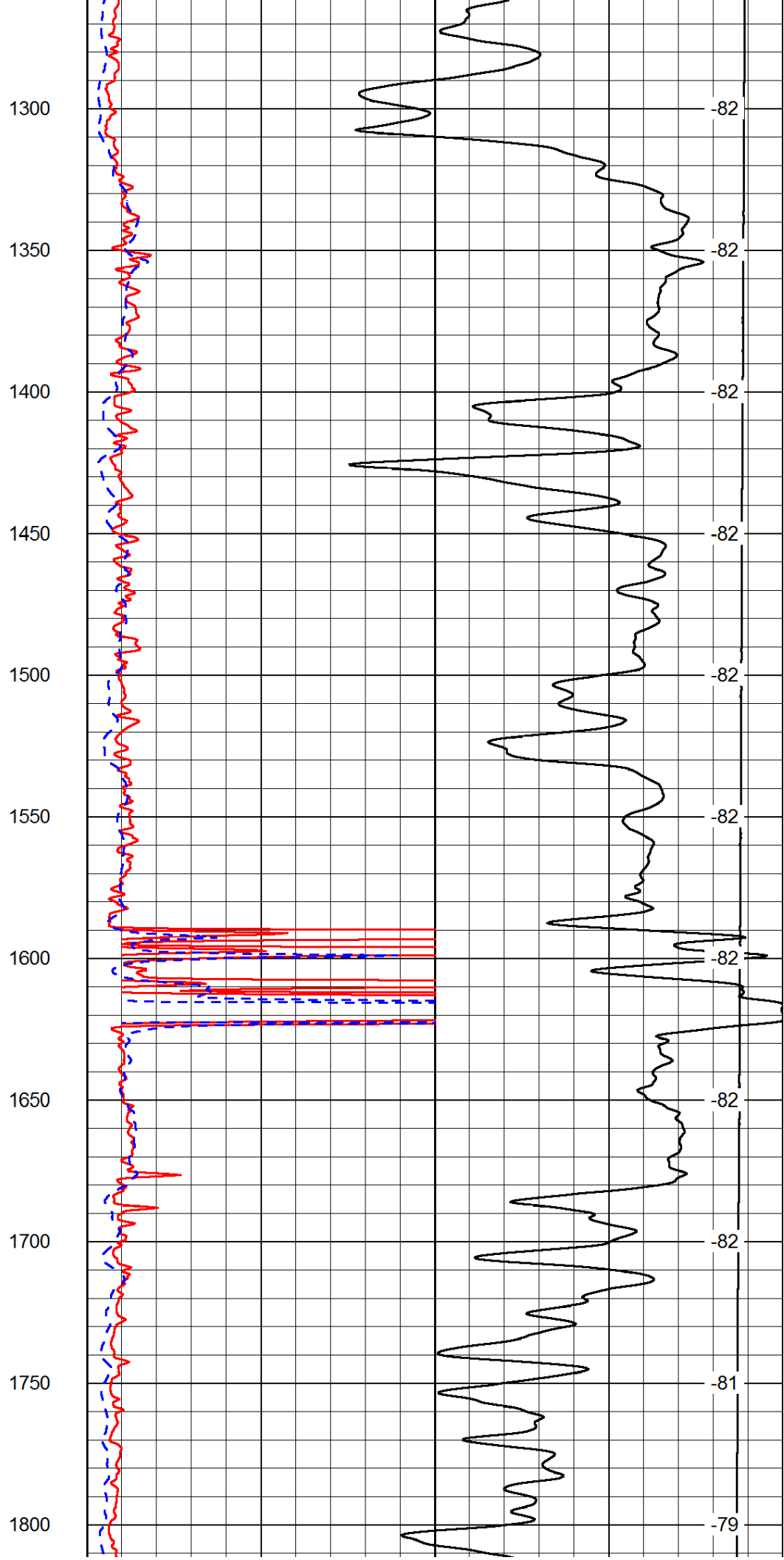
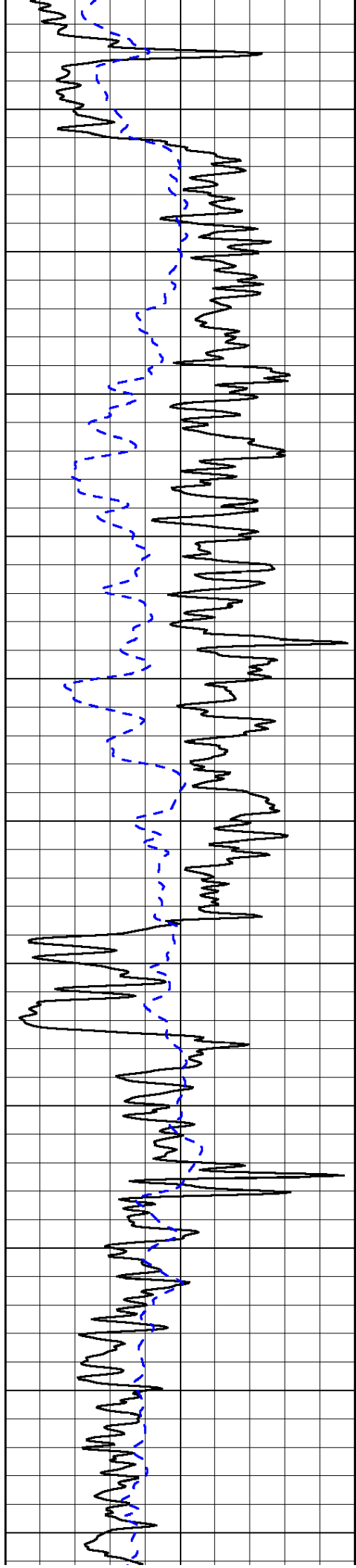
LSPD

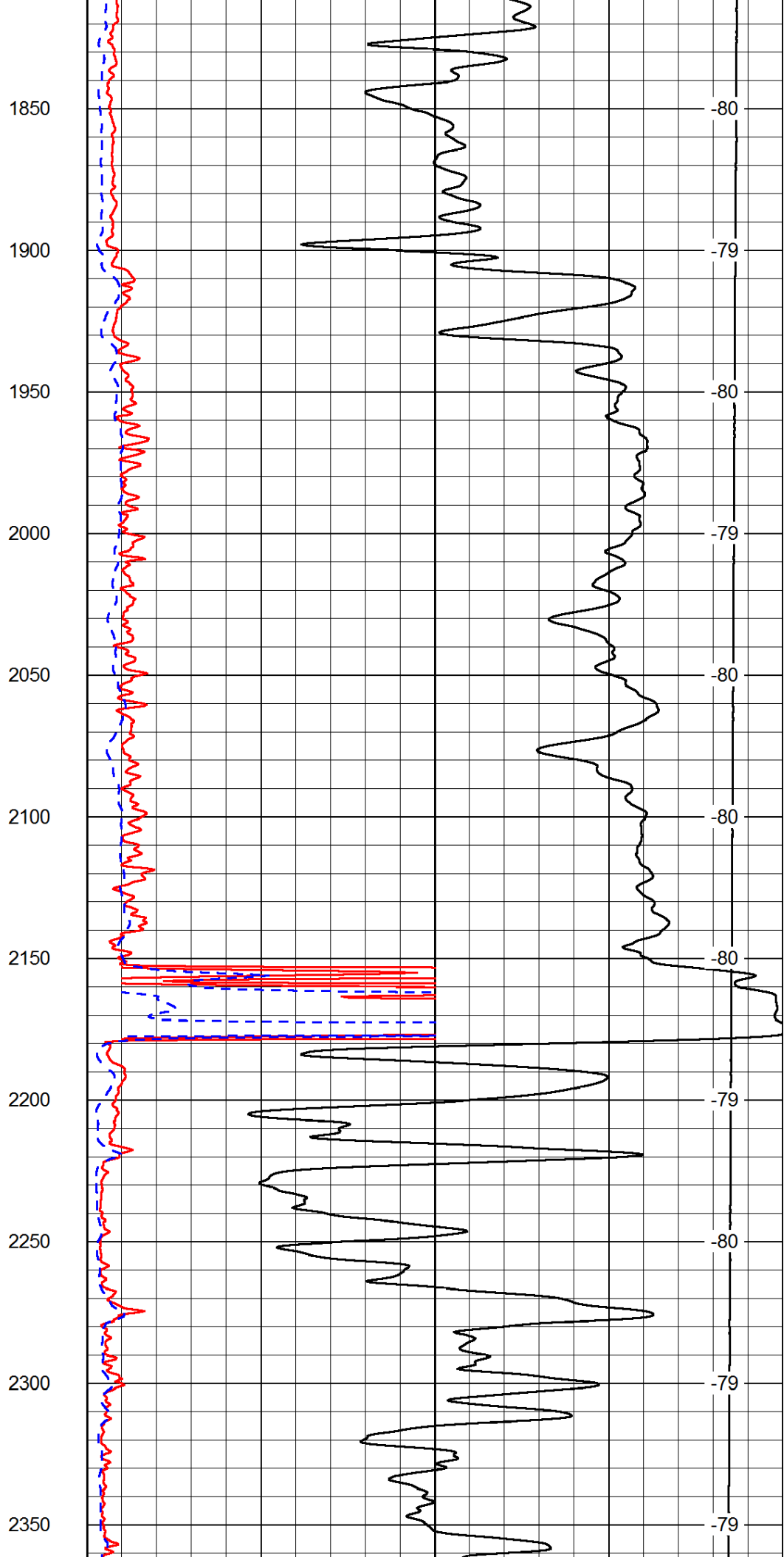
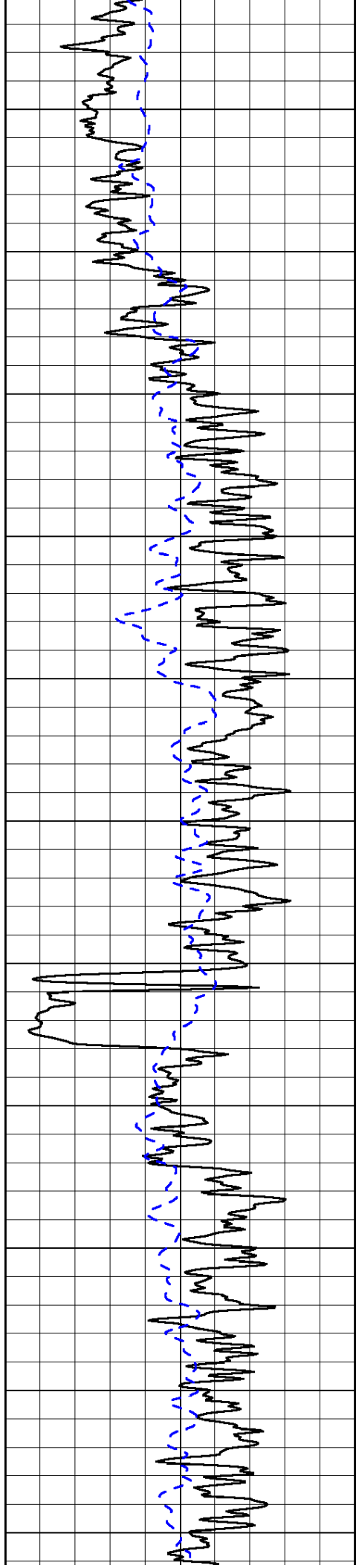
1000	Conductivity	0
15000	Line Tension	0

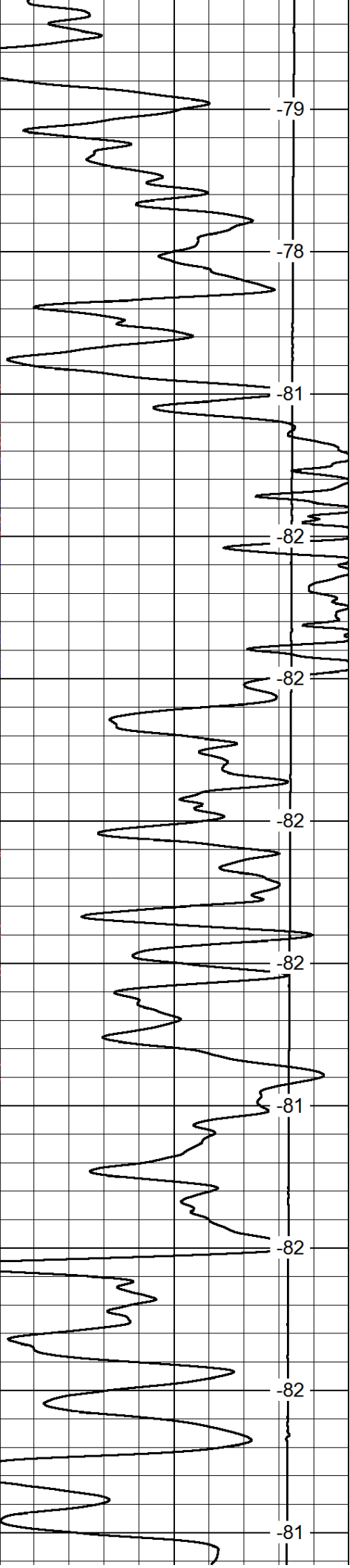
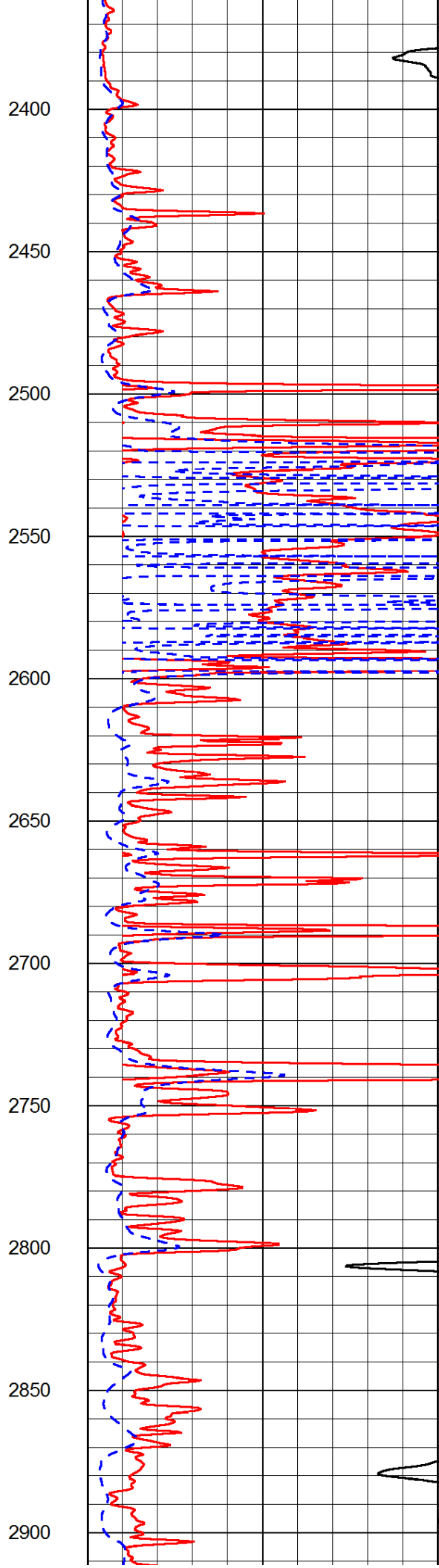
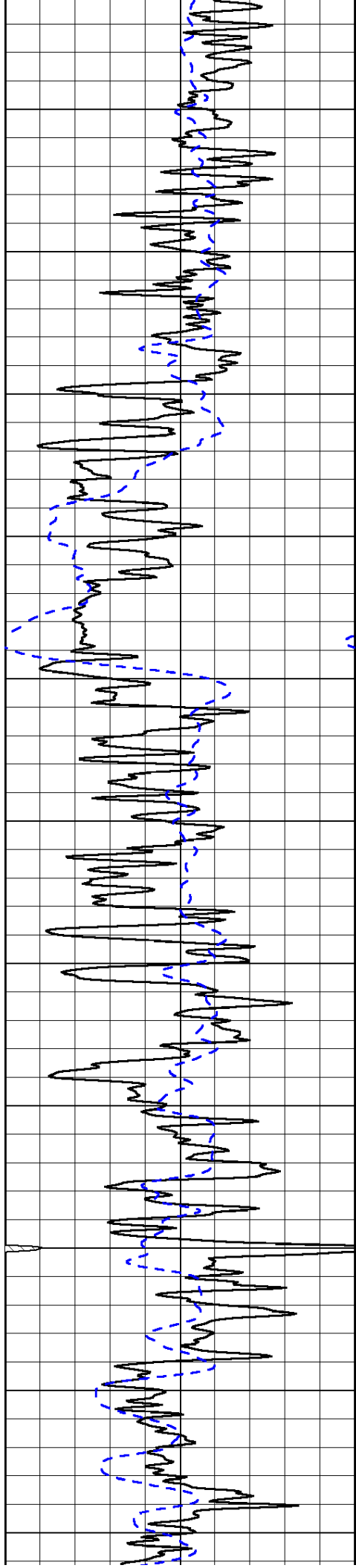
50	Shallow Resistivity	500
50	Deep Resistivity	500

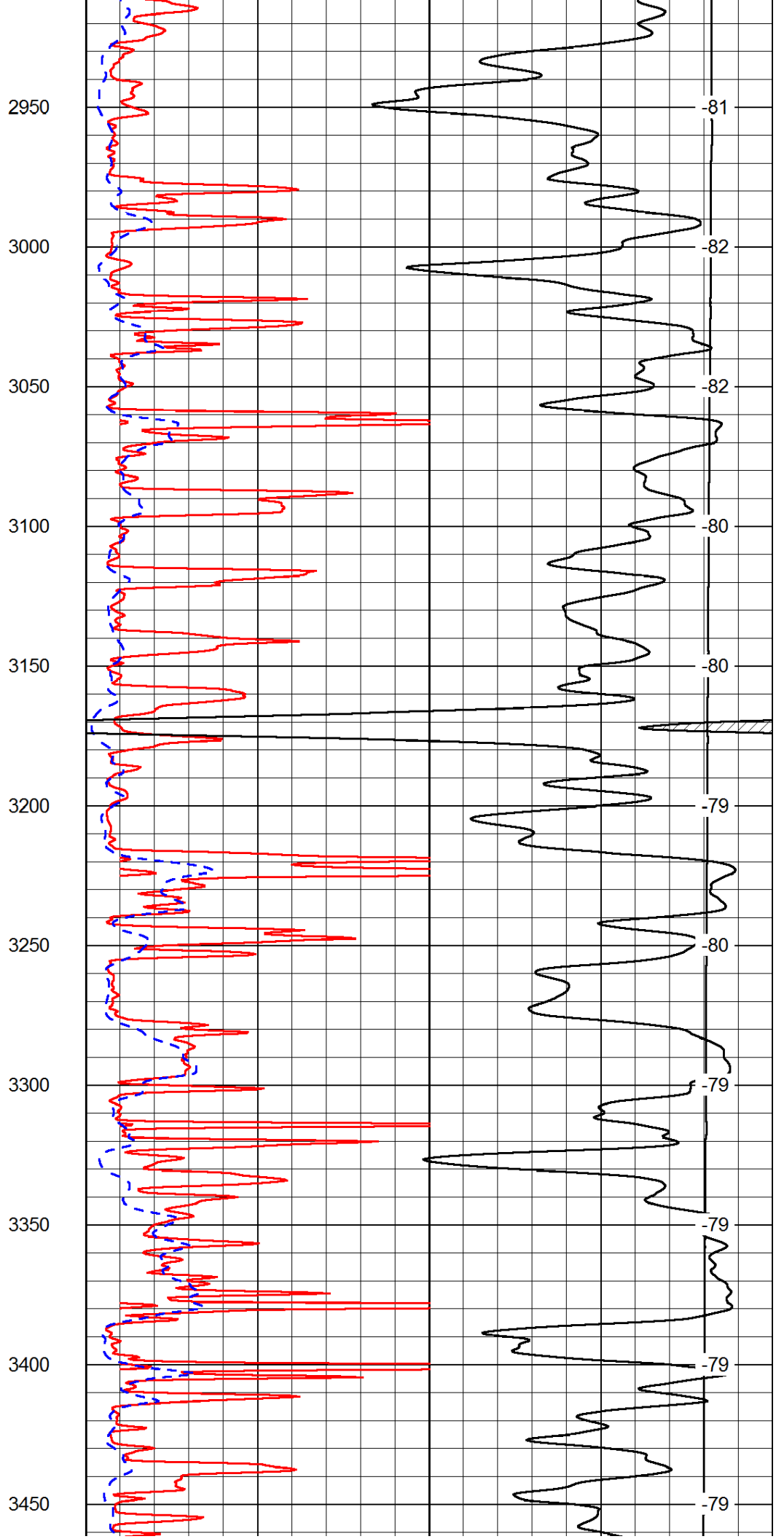
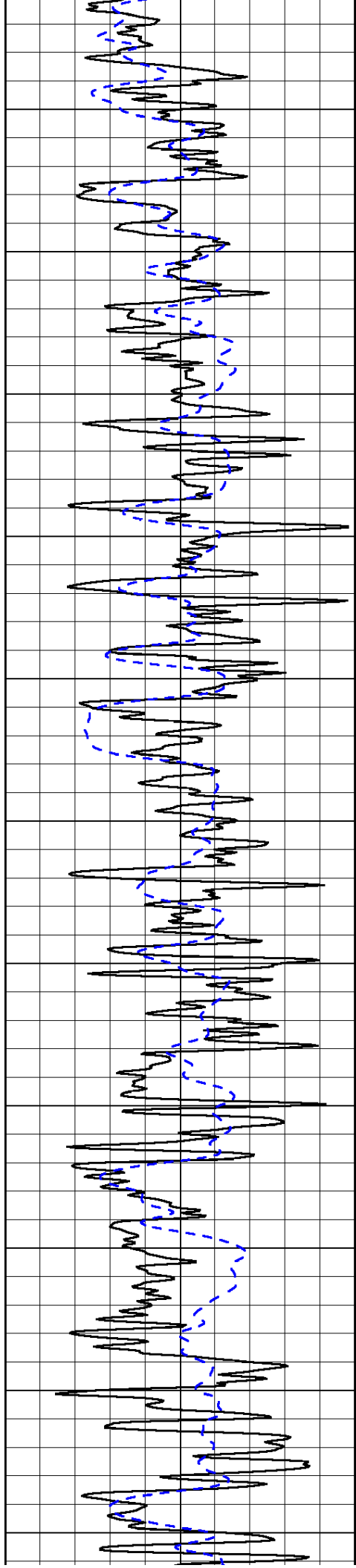


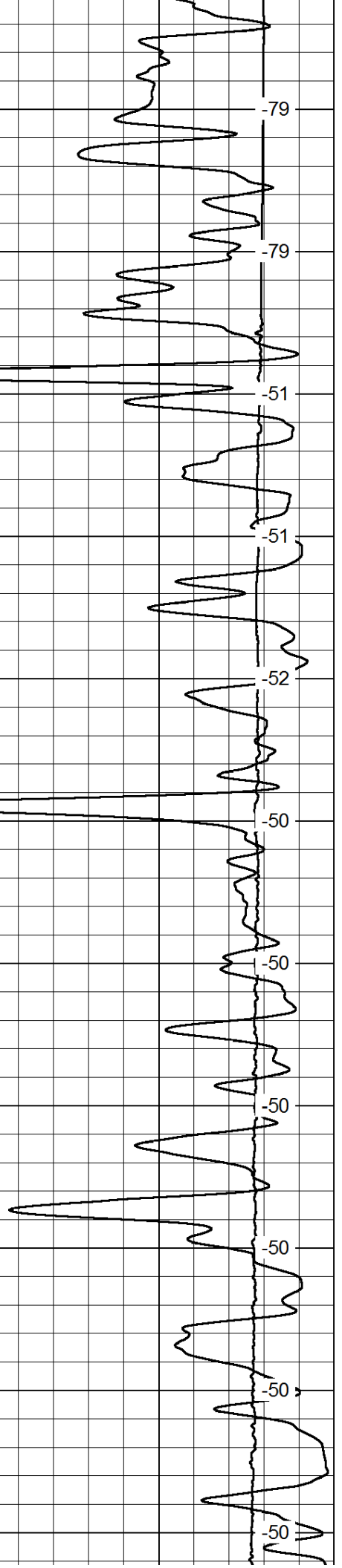
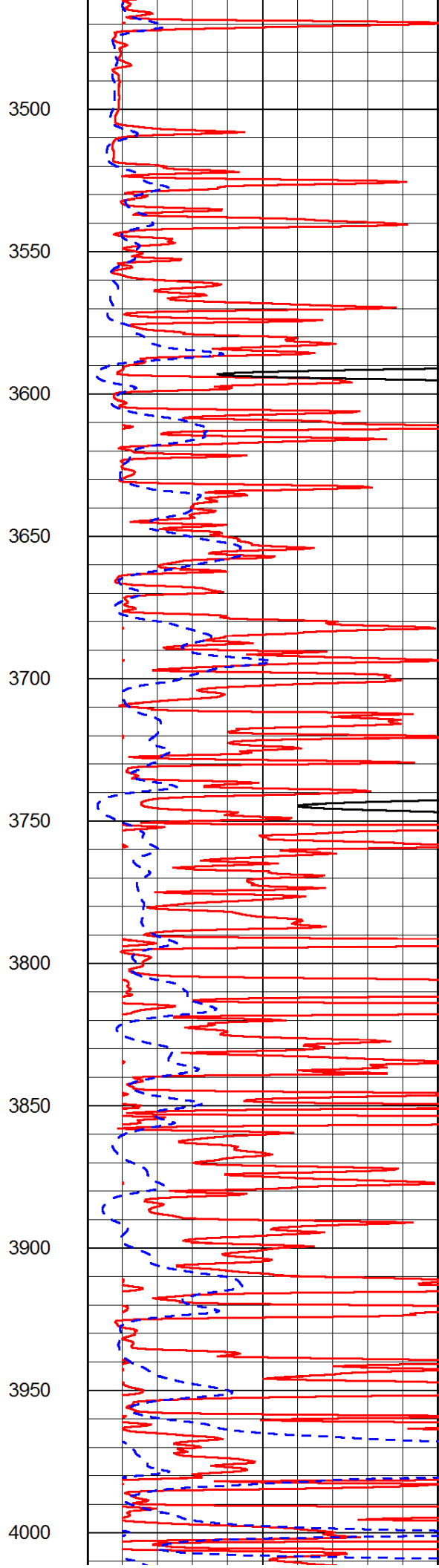
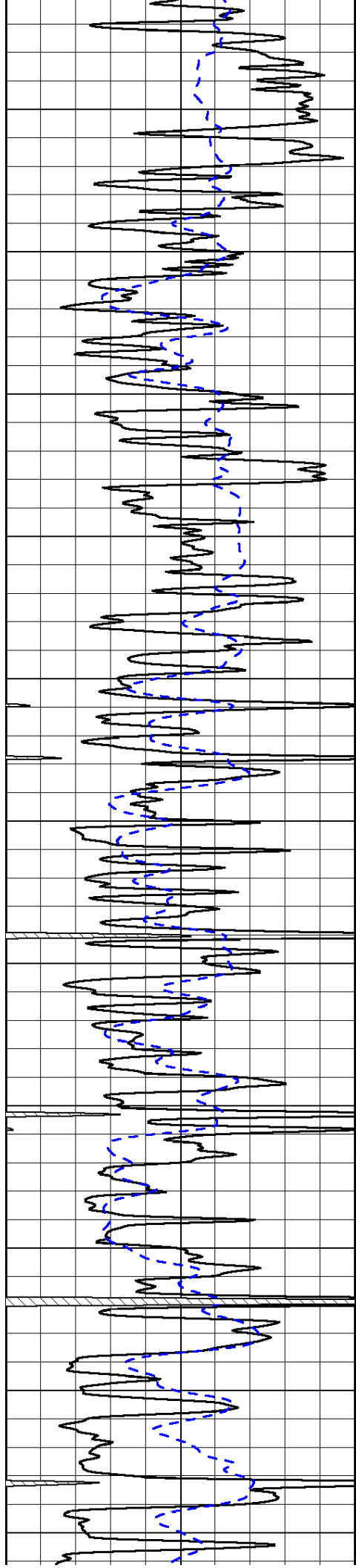


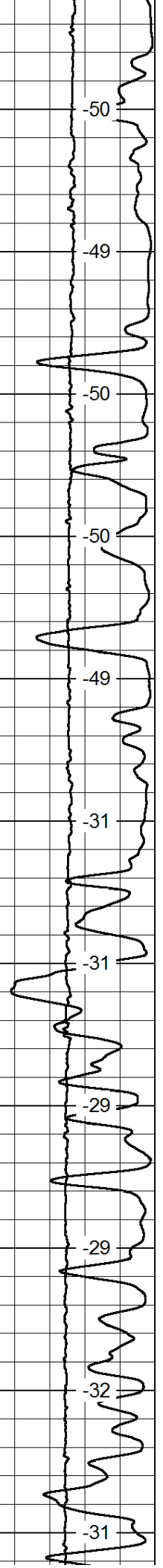
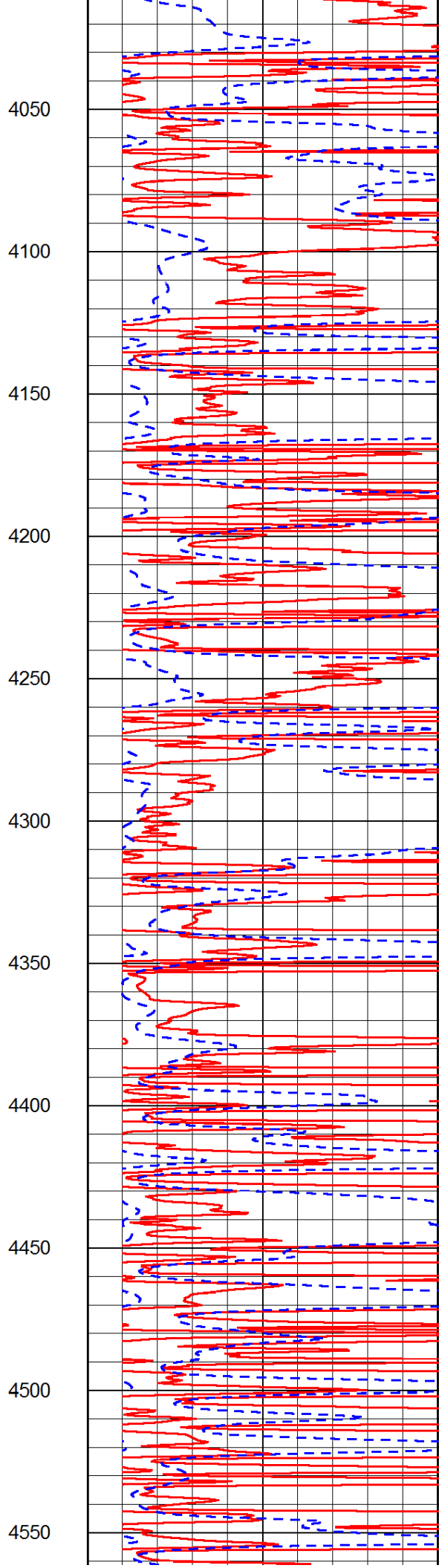
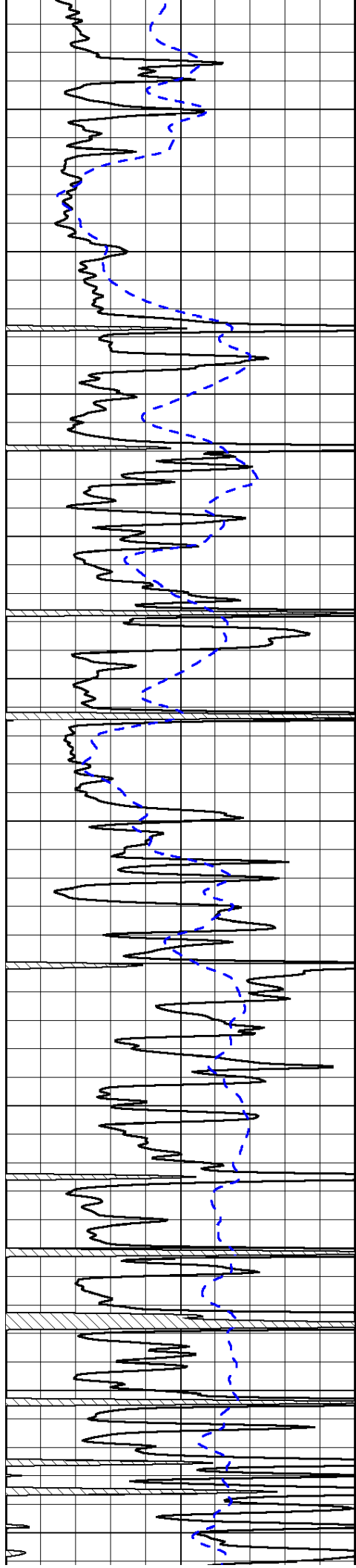


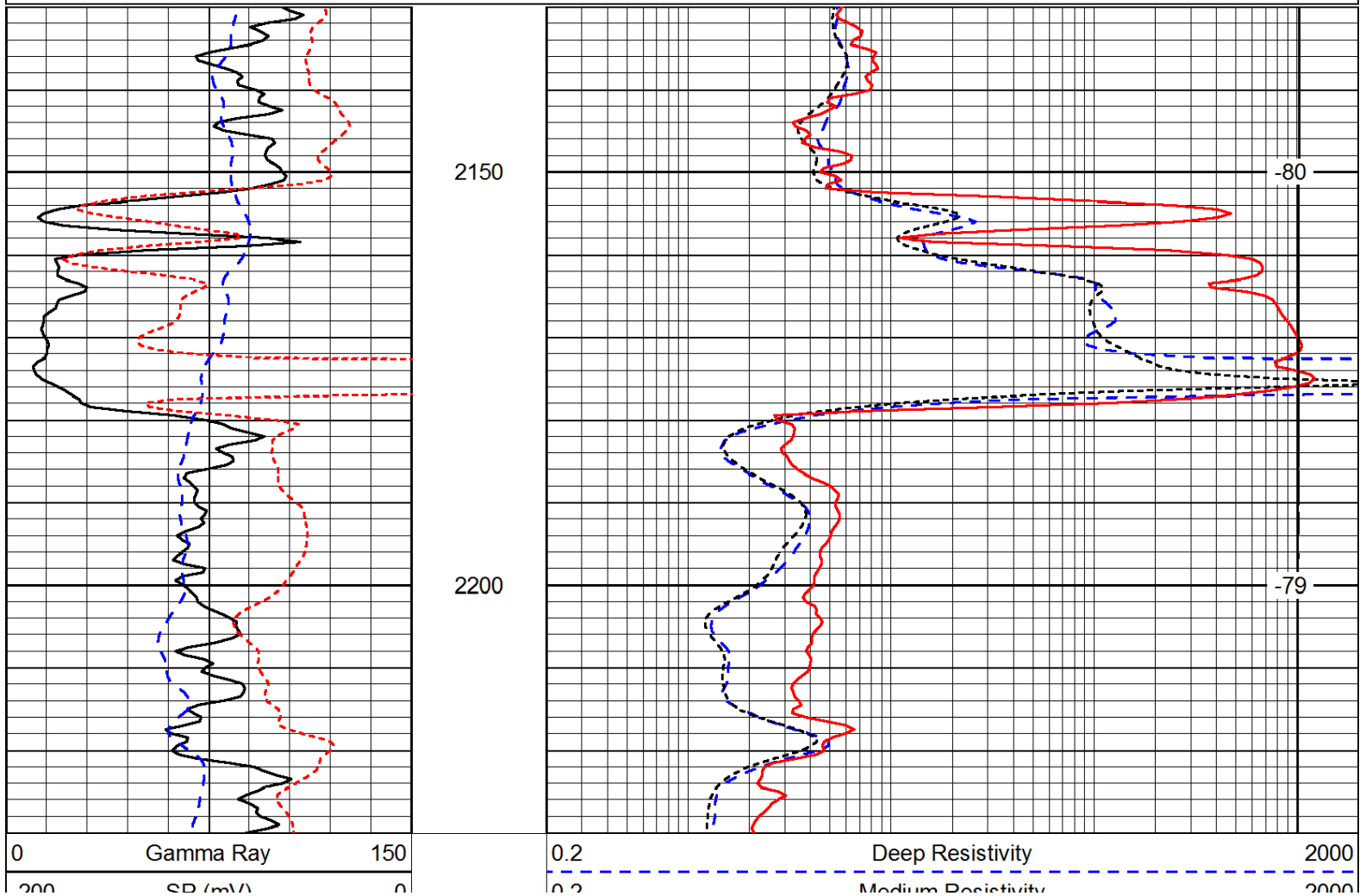
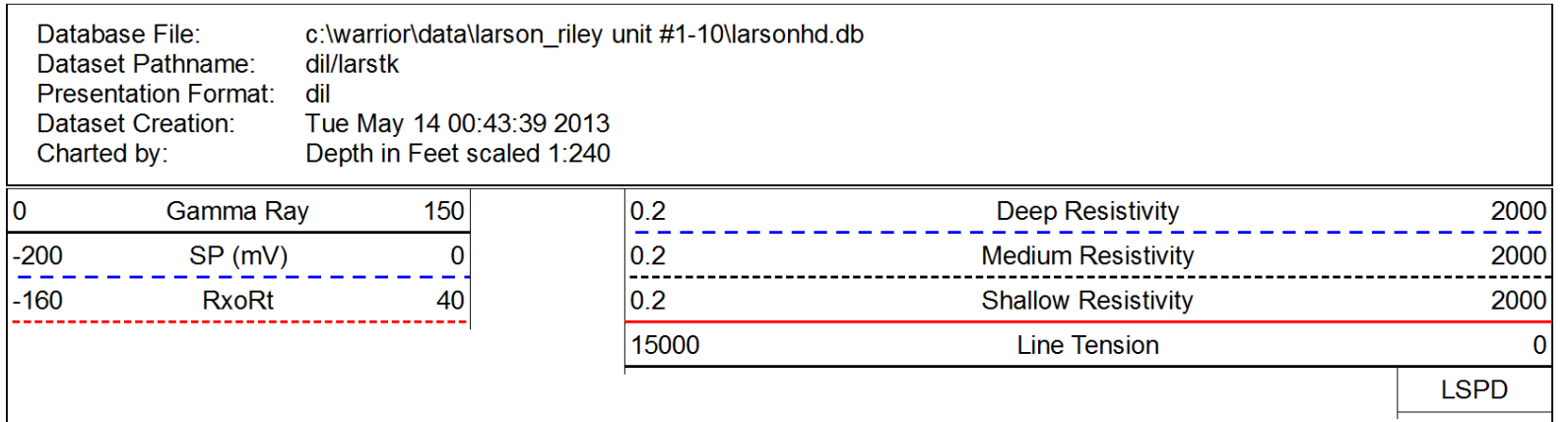
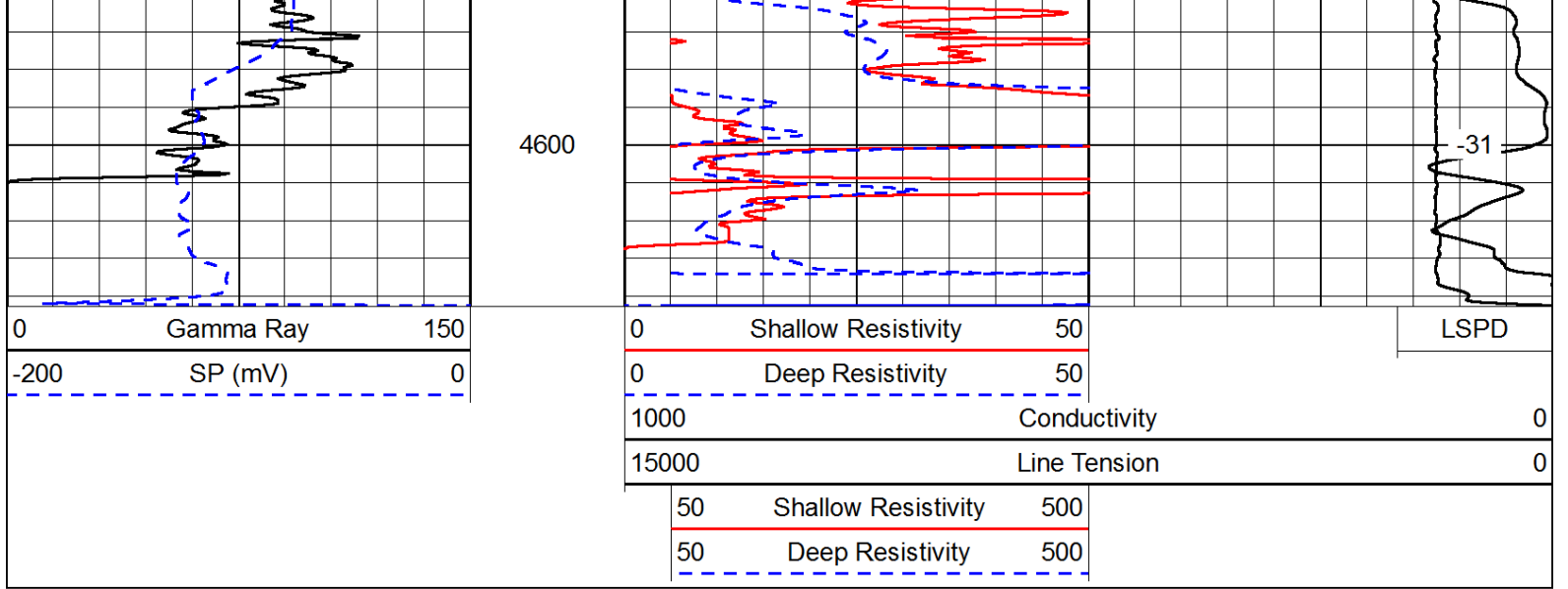












200	SP (mV)	0
-160	RxoRt	40

0.2	Medium Resistivity	2000
0.2	Shallow Resistivity	2000
15000	Line Tension	0

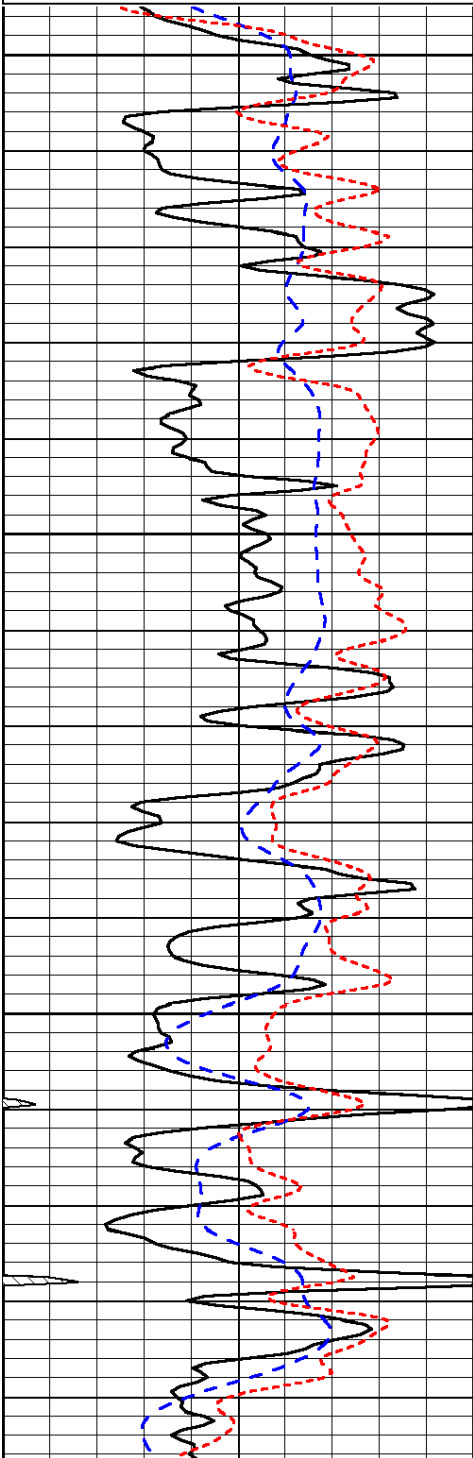
LSPD

Database File: c:\warrior\data\larson_riley unit #1-10\larsonhd.db
 Dataset Pathname: dil/larstk
 Presentation Format: dil
 Dataset Creation: Tue May 14 00:43:39 2013
 Charted by: Depth in Feet scaled 1:240

0	Gamma Ray	150
-200	SP (mV)	0
-160	RxoRt	40

0.2	Deep Resistivity	2000
0.2	Medium Resistivity	2000
0.2	Shallow Resistivity	2000
15000	Line Tension	0

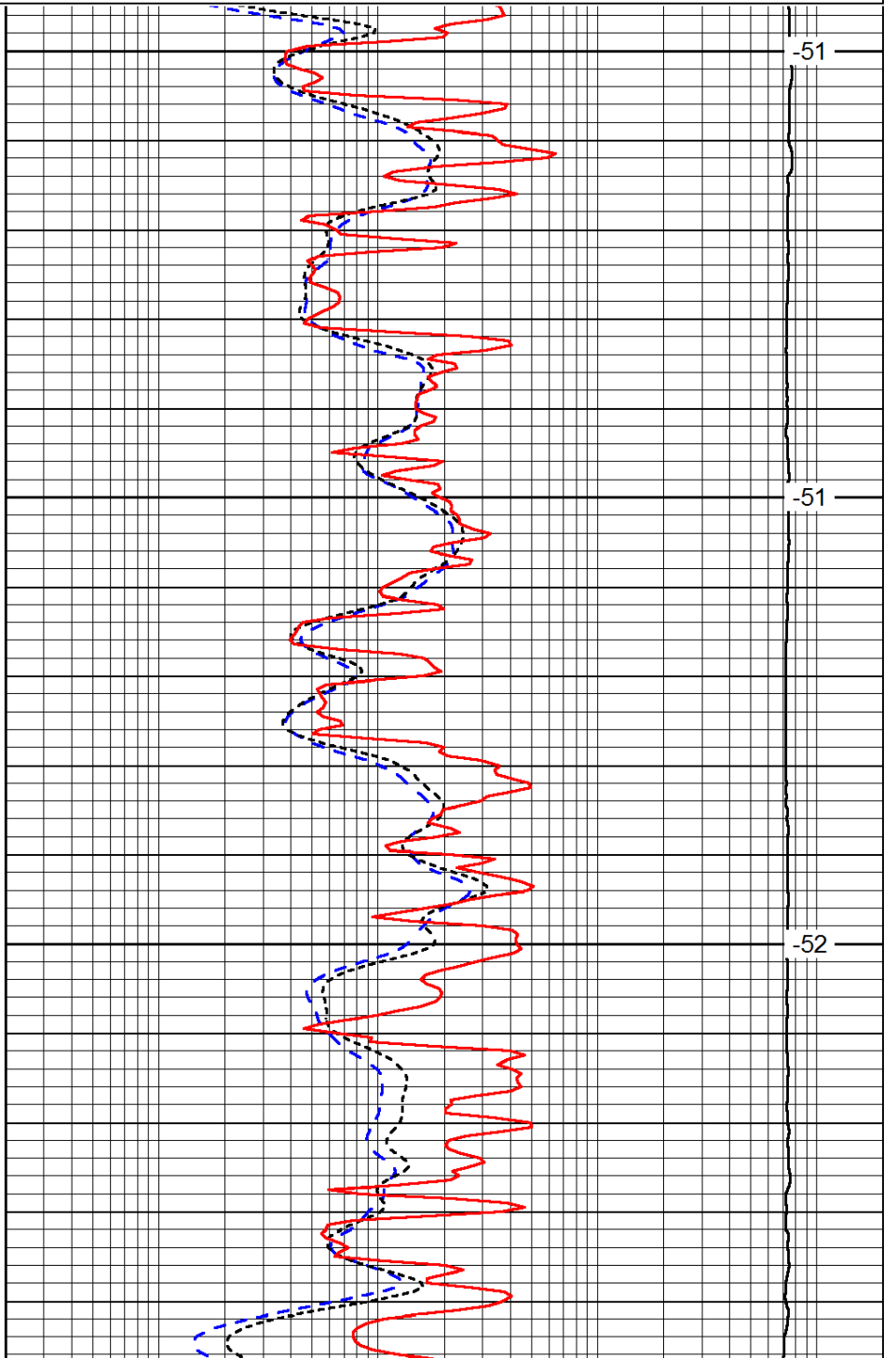
LSPD



3600

3650

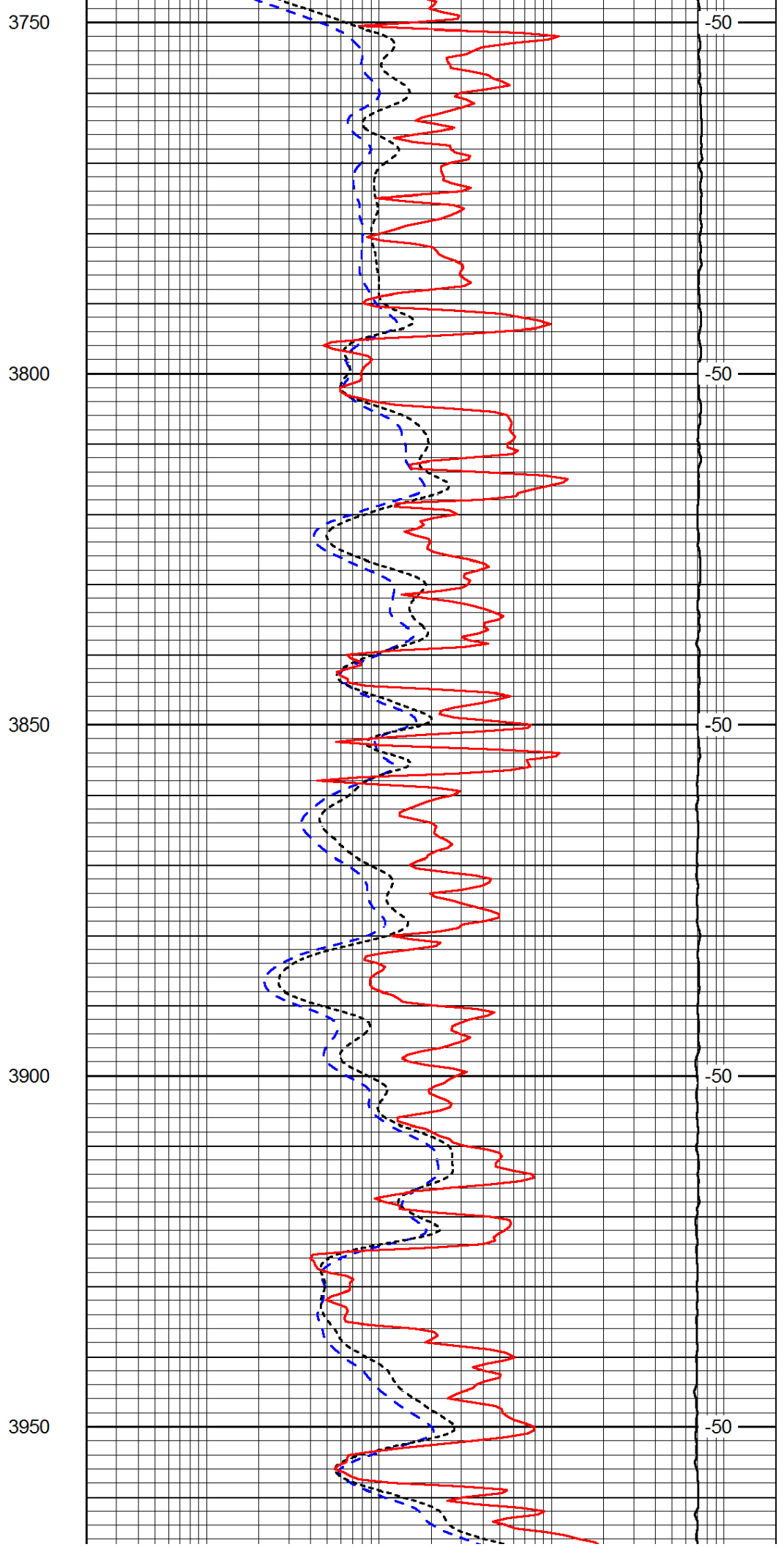
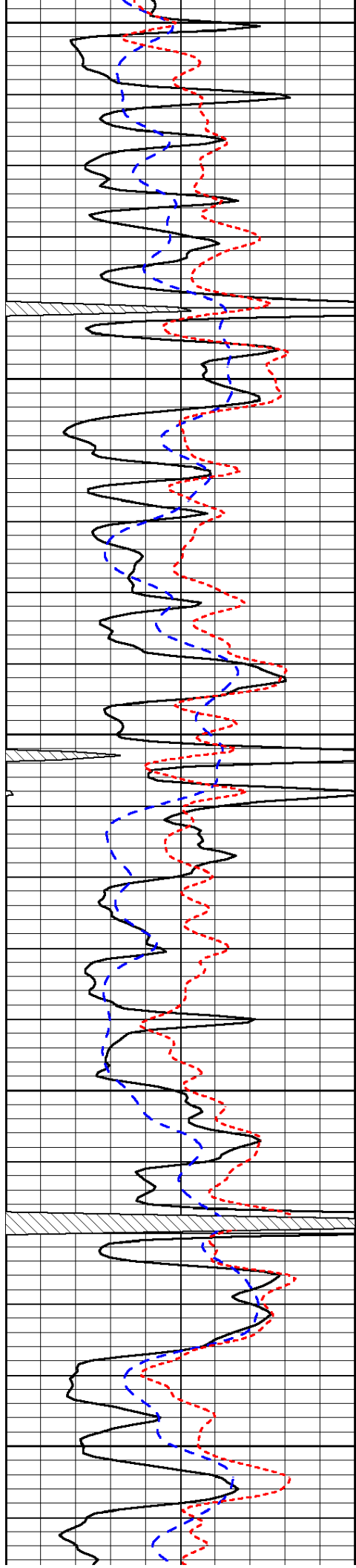
3700

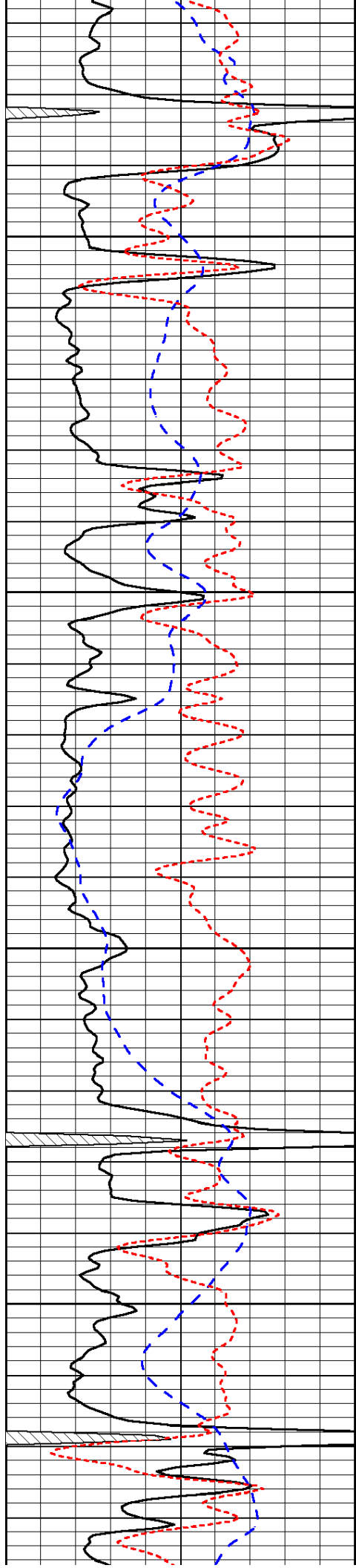


-51

-51

-52



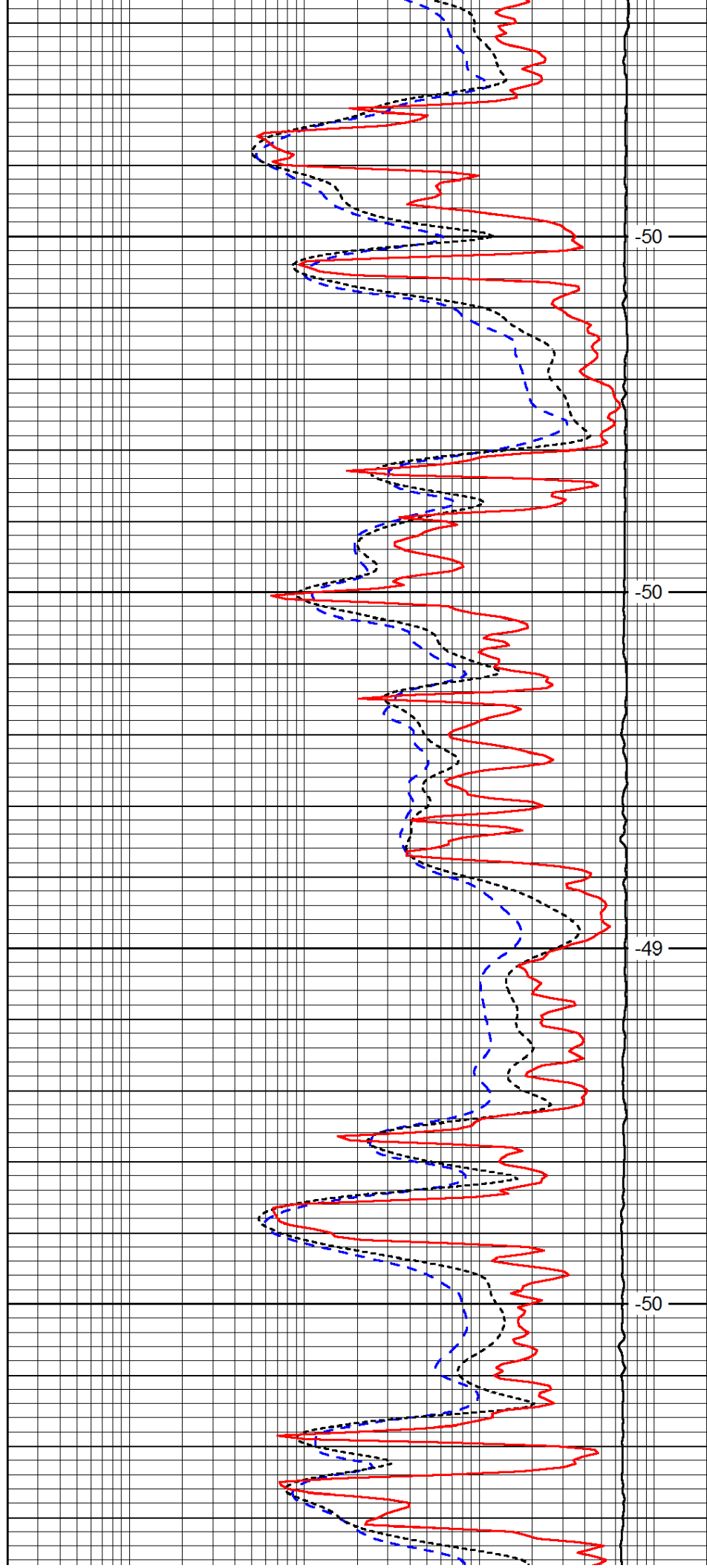


4000

4050

4100

4150

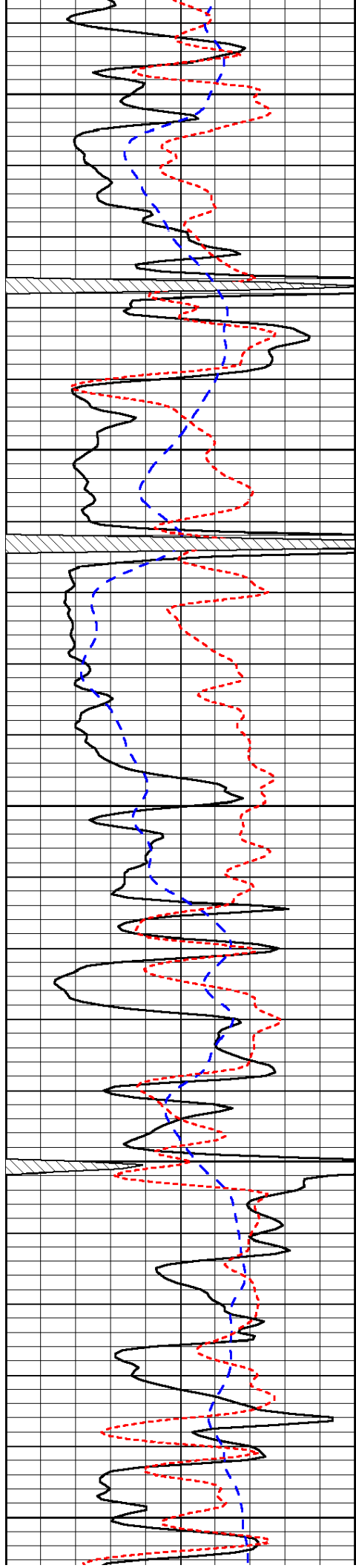


-50

-50

-49

-50



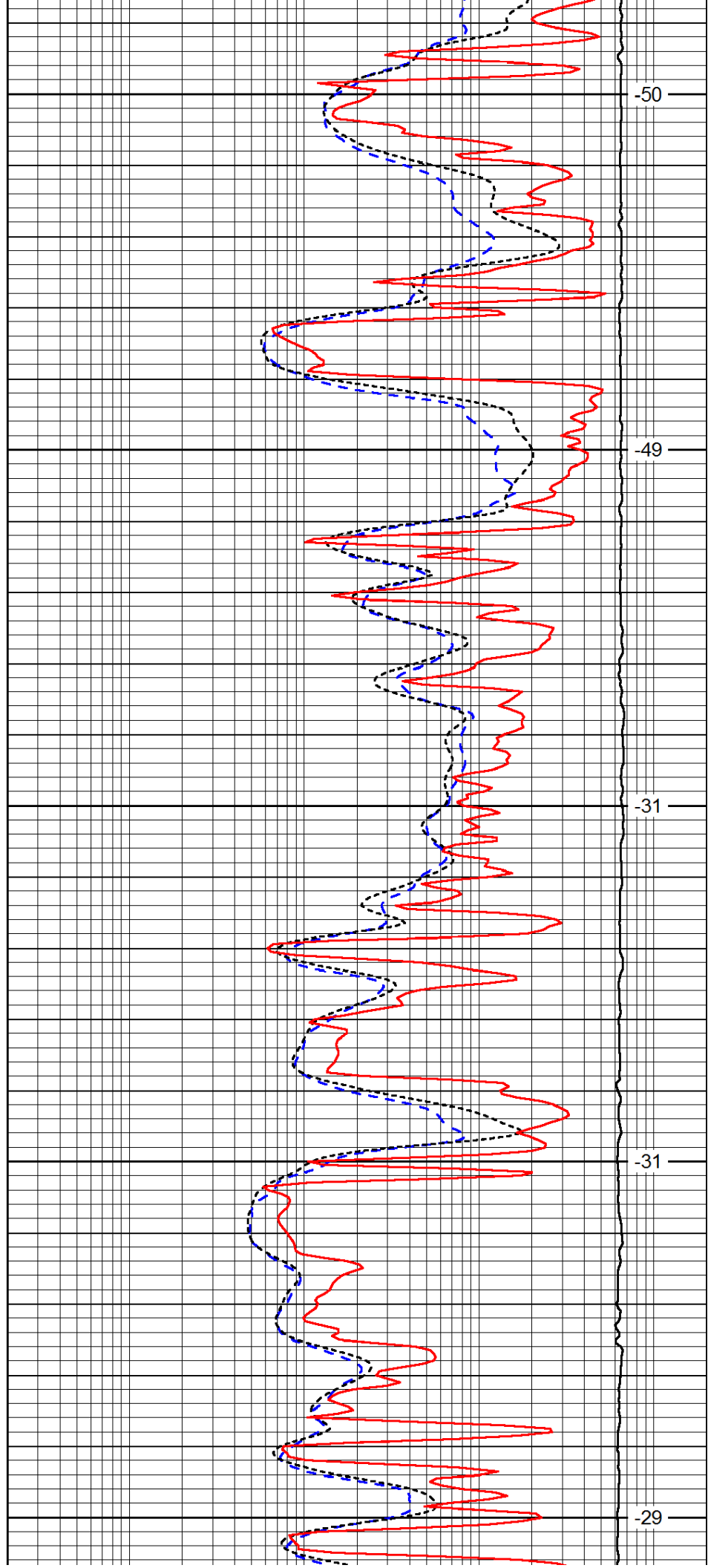
4200

4250

4300

4350

4400



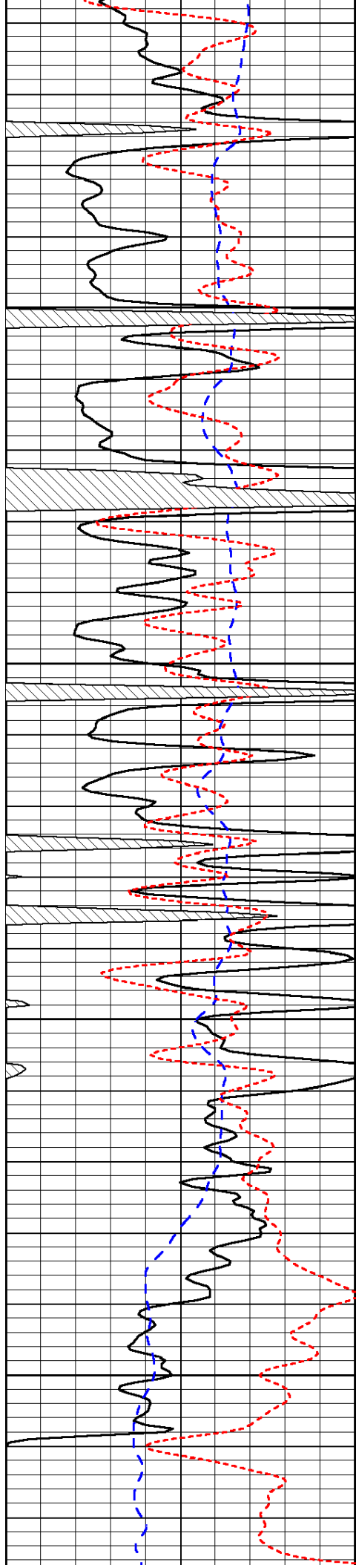
-50

-49

-31

-31

-29

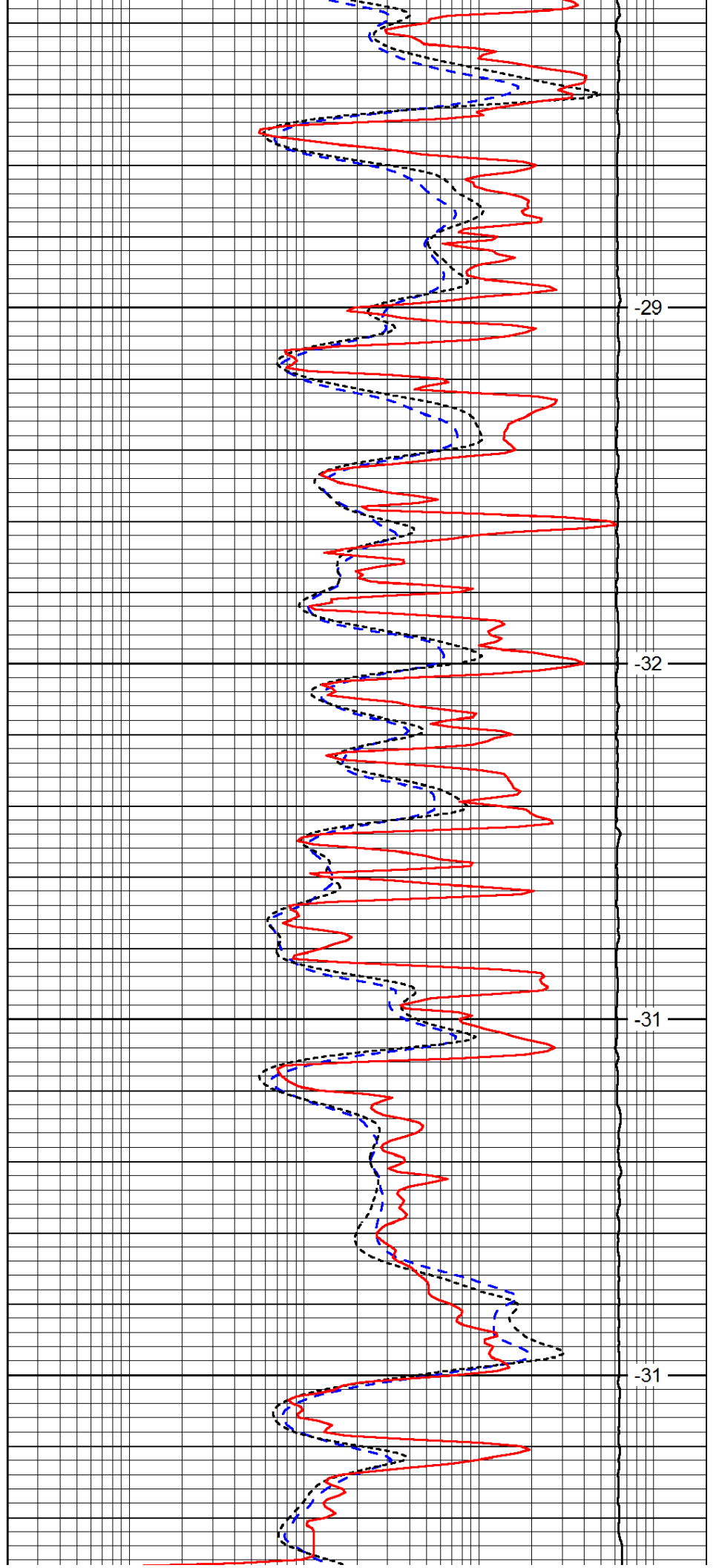


4450

4500

4550

4600

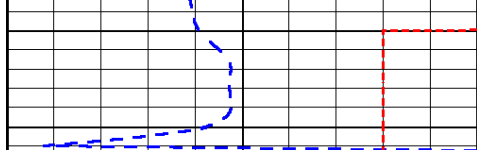


-29

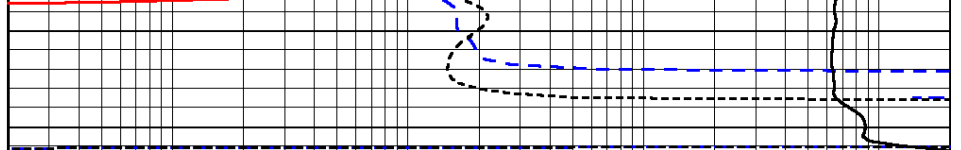
-32

-31

-31



0	Gamma Ray	150
-200	SP (mV)	0
-160	RxoRt	40



0.2	Deep Resistivity	2000
0.2	Medium Resistivity	2000
0.2	Shallow Resistivity	2000
15000	Line Tension	0

LSPD