



Pioneer Energy Services

# Microresistivity Log

15-101-22,439-00-00

API No.

Company Larson Engineering, Inc.

Well Riley Unit #1-10

Field Wildcat

County Lane State

Kansas

Location

NW NE NE SE  
2573' FSL & 517' FEL

Sec: 10 Twp: 18S Rge: 29W

Other Services  
CNL/CDL  
DIL

Permanent Datum Ground Level

Kelly Bushing

Elevation 2786

Log Measured From Kelly Bushing

7 Ft. Above Perm. Datum

K.B. 2793  
D.F.  
G.L. 2786

Date

5/14/2013

Run Number

Two

Depth Driller

4635

Depth Logger

4637

Bottom Logged Interval

4636

Top Log Interval

3600

Casing Driller

8.625 @ 273

Casing Logger

272

Bit Size

7.875

Type Fluid in Hole

Chemical

Salinity,ppm CL

3,700

Density / Viscosity

9.3 55

pH / Fluid Loss

10.0 7.1

Source of Sample

Flowline

Rm @ Meas. Temp

.7 @ 80

Rmf @ Meas. Temp

.53 @ 80

Rmc @ Meas. Temp

.95 @ 80

Source of Rmf / Rmc

Charts

Rm @ BHT

.46 @ 122

Operating Rig Time

5 Hours

Max Rec. Temp. F

122

Equipment Number

17

Location

Hays

Recorded By

C. Desai

Witnessed By

Vern Schrag

<<< Fold Here >>>

All interpretations are opinions based on inferences from electrical or other measurements and we cannot and do not guarantee the accuracy or correctness of any interpretation, and we shall not, except in the case of gross or willful negligence on our part, be liable or responsible for any loss, costs, damages, or expenses incurred or sustained by anyone resulting from any interpretation made by any of our officers, agents or employees. These interpretations are also subject to our general terms and conditions set out in our current Price Schedule.

### Comments

Thank you for using Pioneer Energy Services  
www.pioneerenergy.com  
785 625 3858

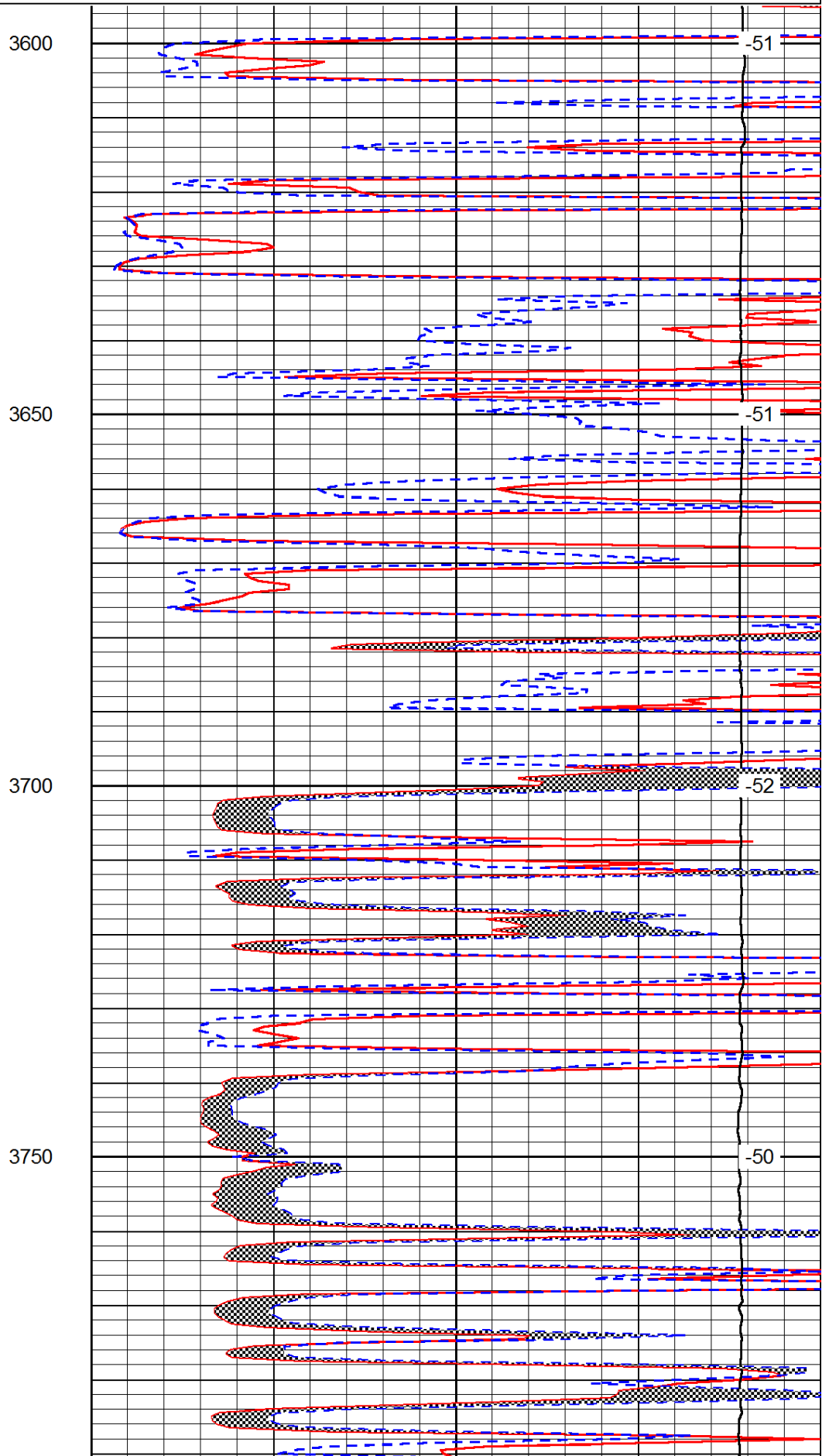
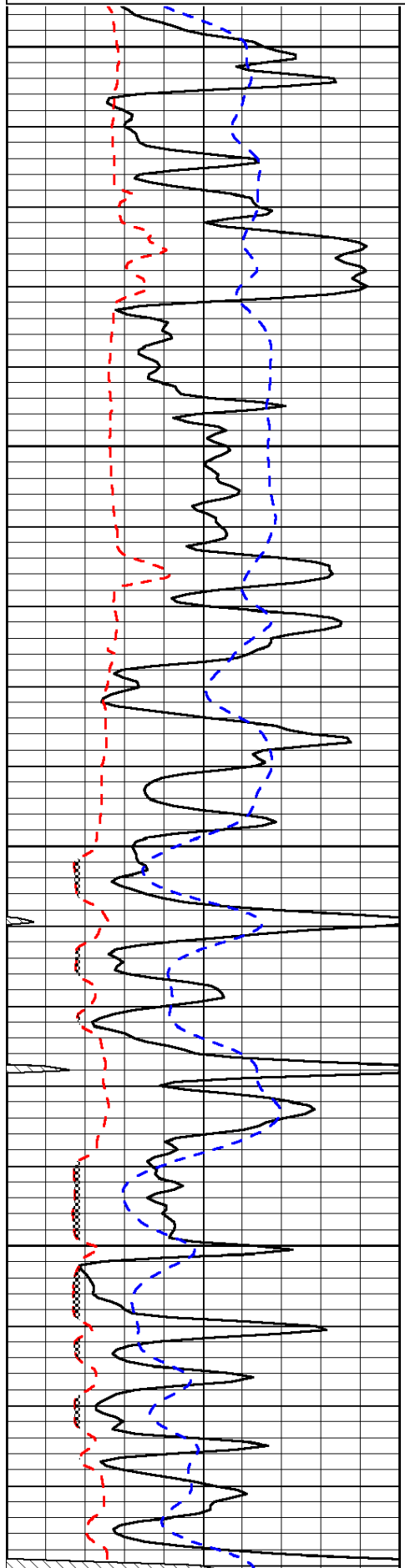
Dighton KS, 2 W to Jagger Rd,  
1 1/2 N, W Into

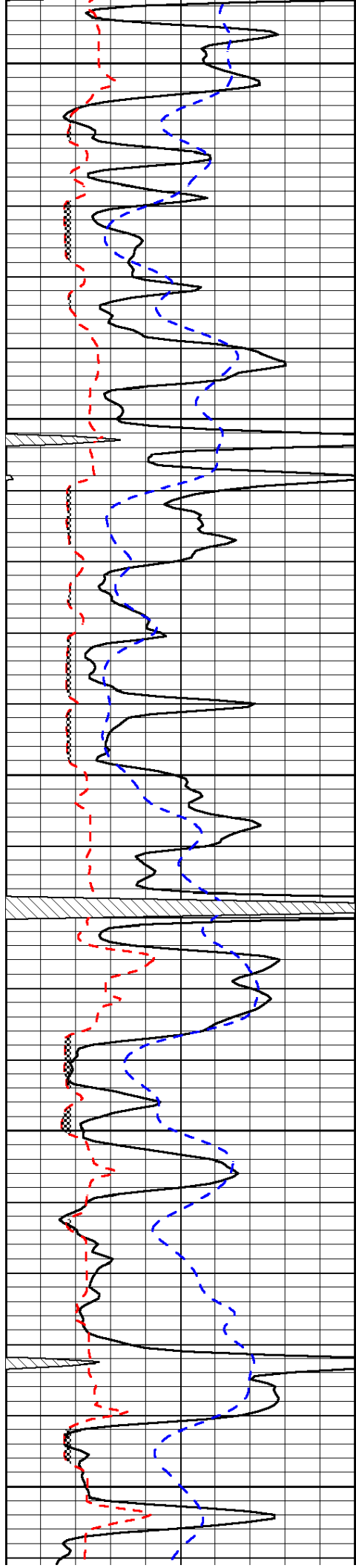
Database File: c:\warrior\data\larson\_riley unit #1-10\larsonhd.db  
Dataset Pathname: dil\larstk  
Presentation Format: micro  
Dataset Creation: Tue May 14 00:43:39 2013  
Charted by: Depth in Feet scaled 1:240

0	Gamma Ray	150
6	Micro Log Caliper (GAPI)	16
-200	SP (mV)	0

0	Micro Inverse 1 X 1	40
0	Micro Normal 2"	40
15000	Line Weight	0

LSPD





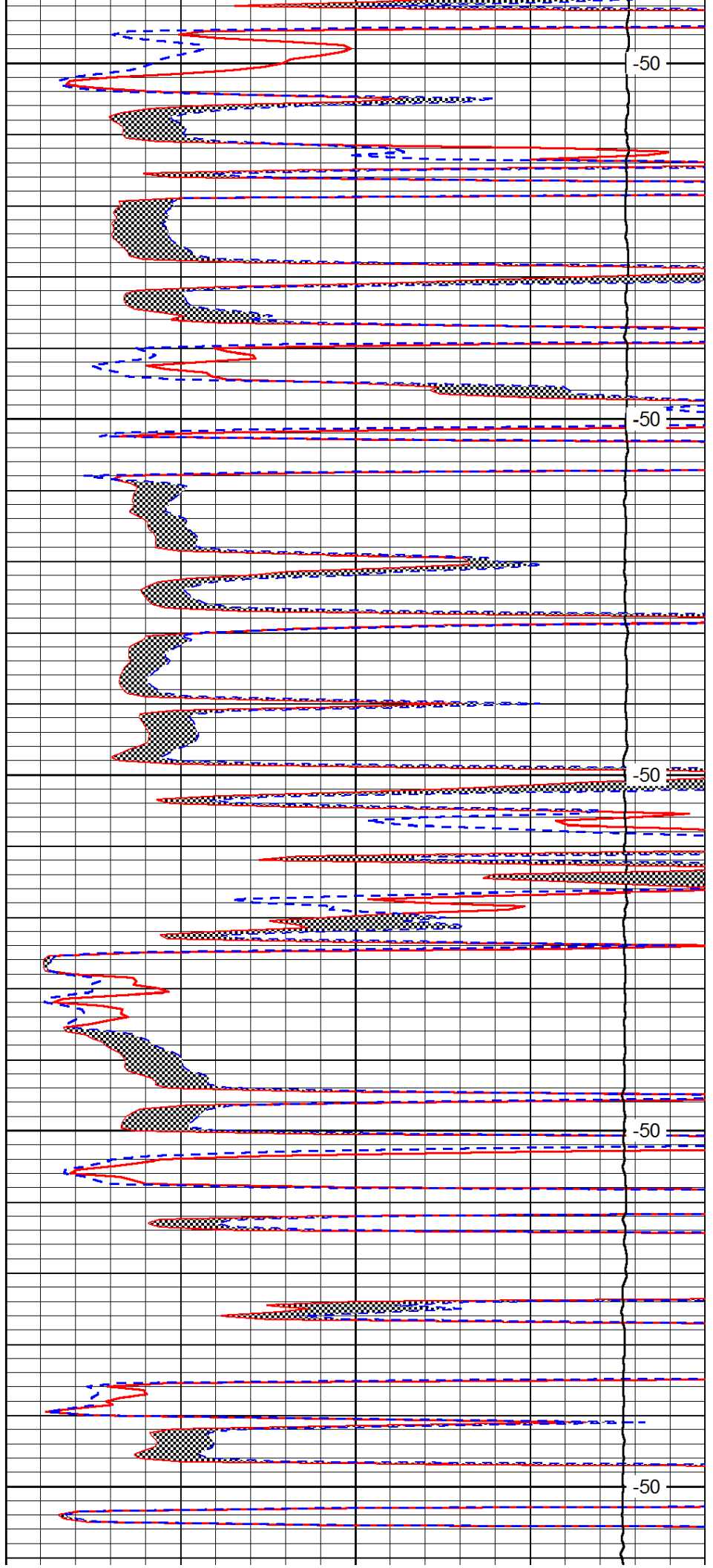
3800

3850

3900

3950

4000



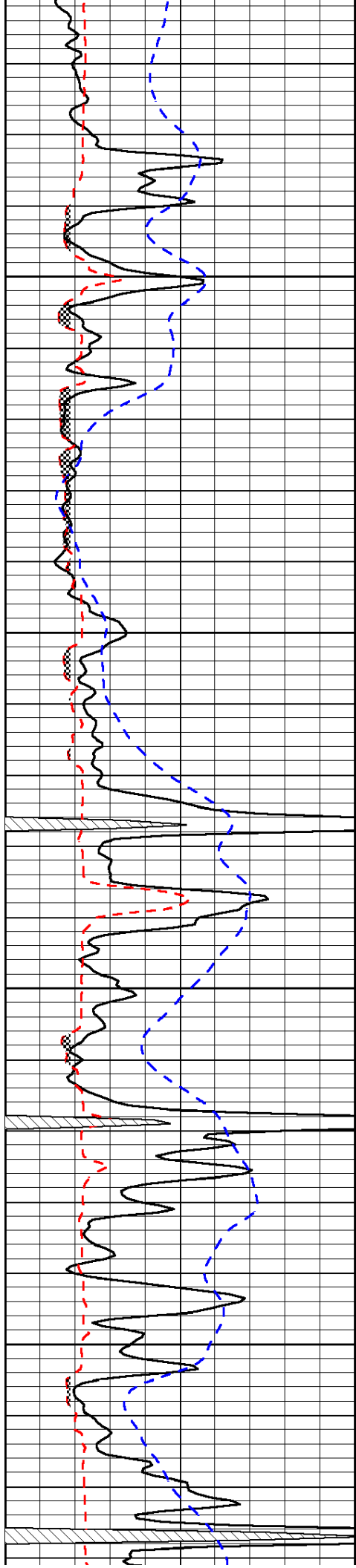
-50

-50

-50

-50

-50

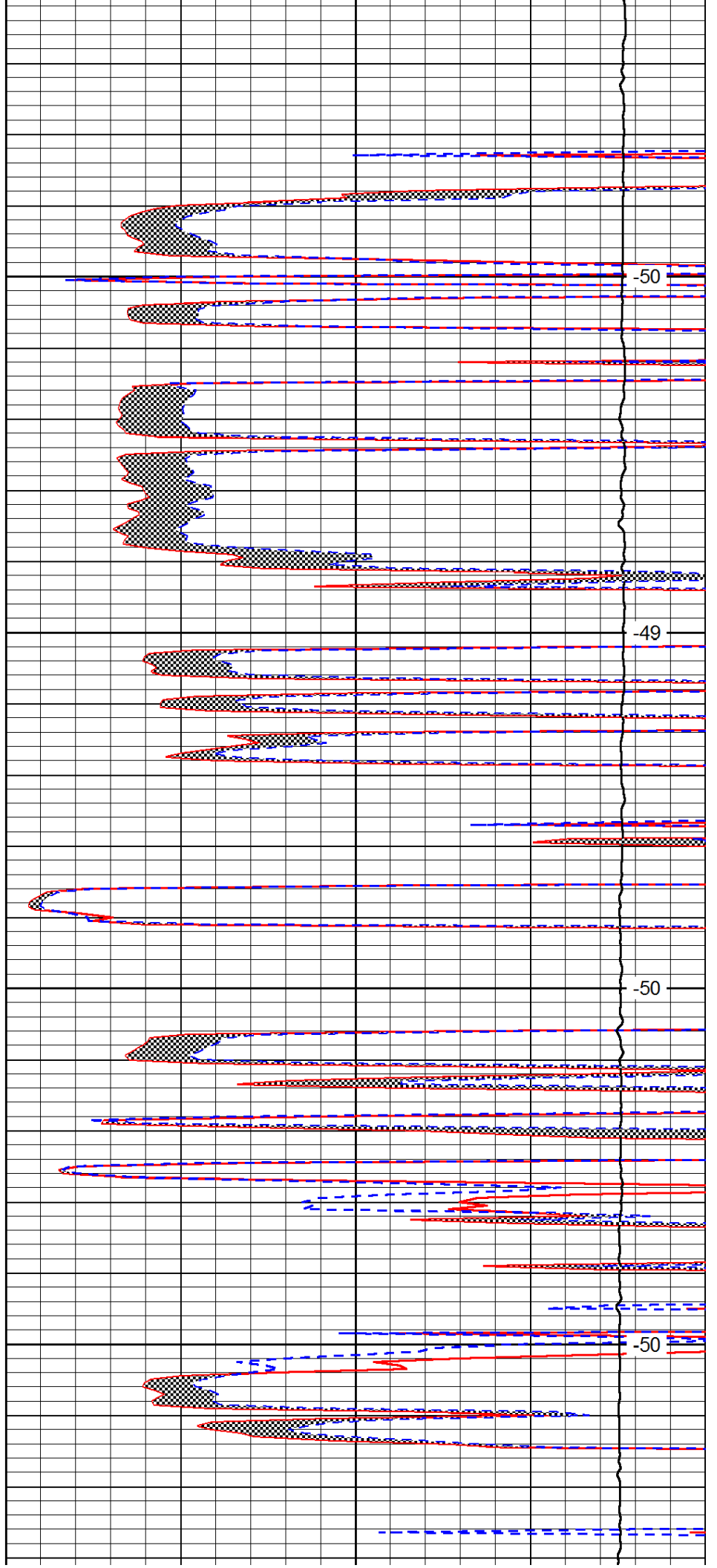


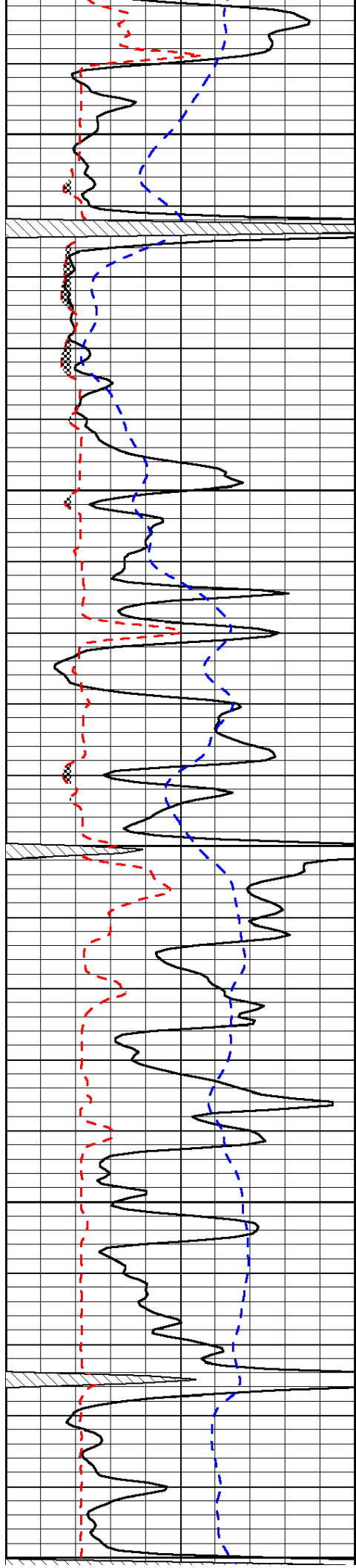
4050

4100

4150

4200





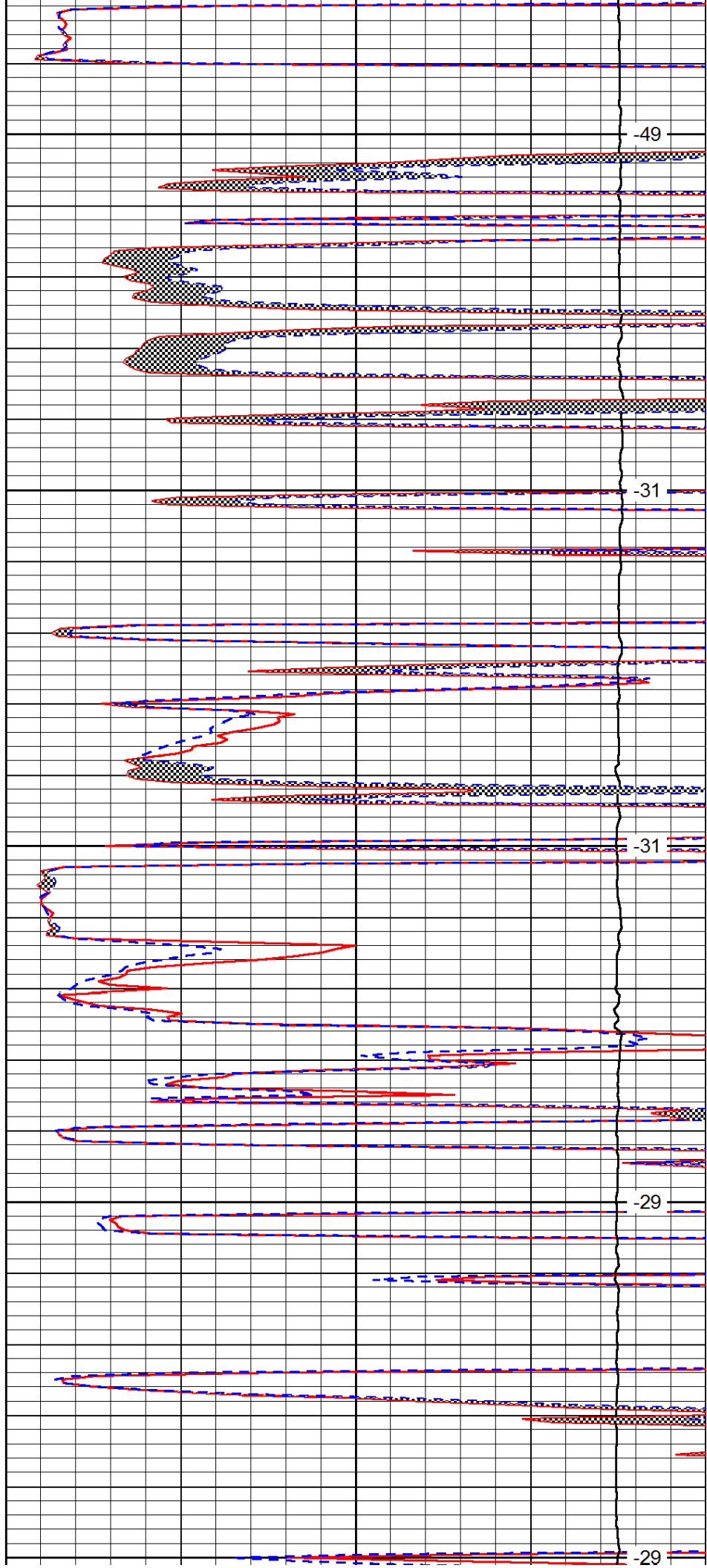
4250

4300

4350

4400

4450



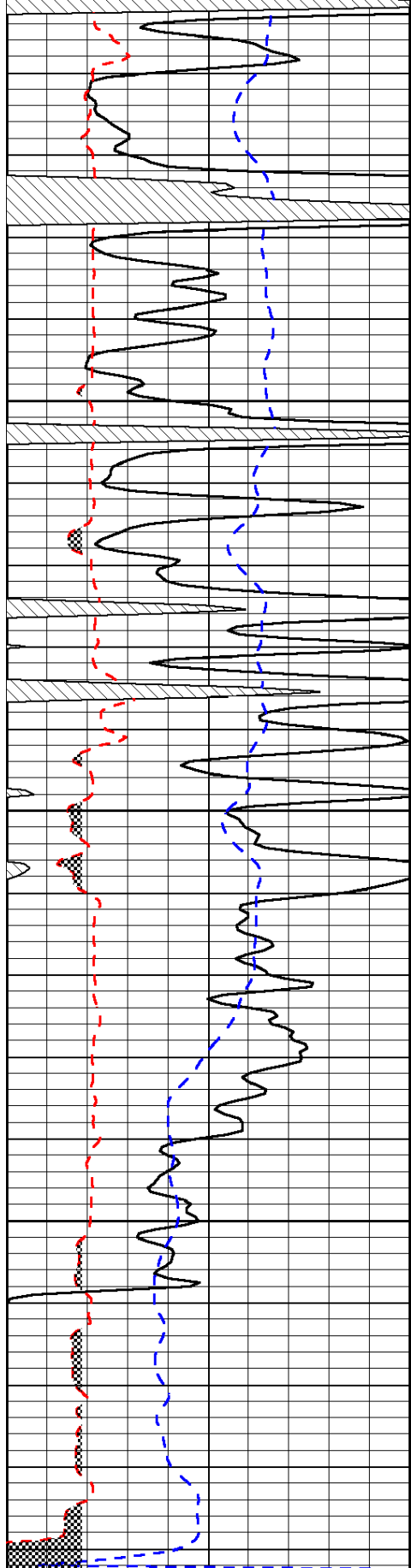
-49

-31

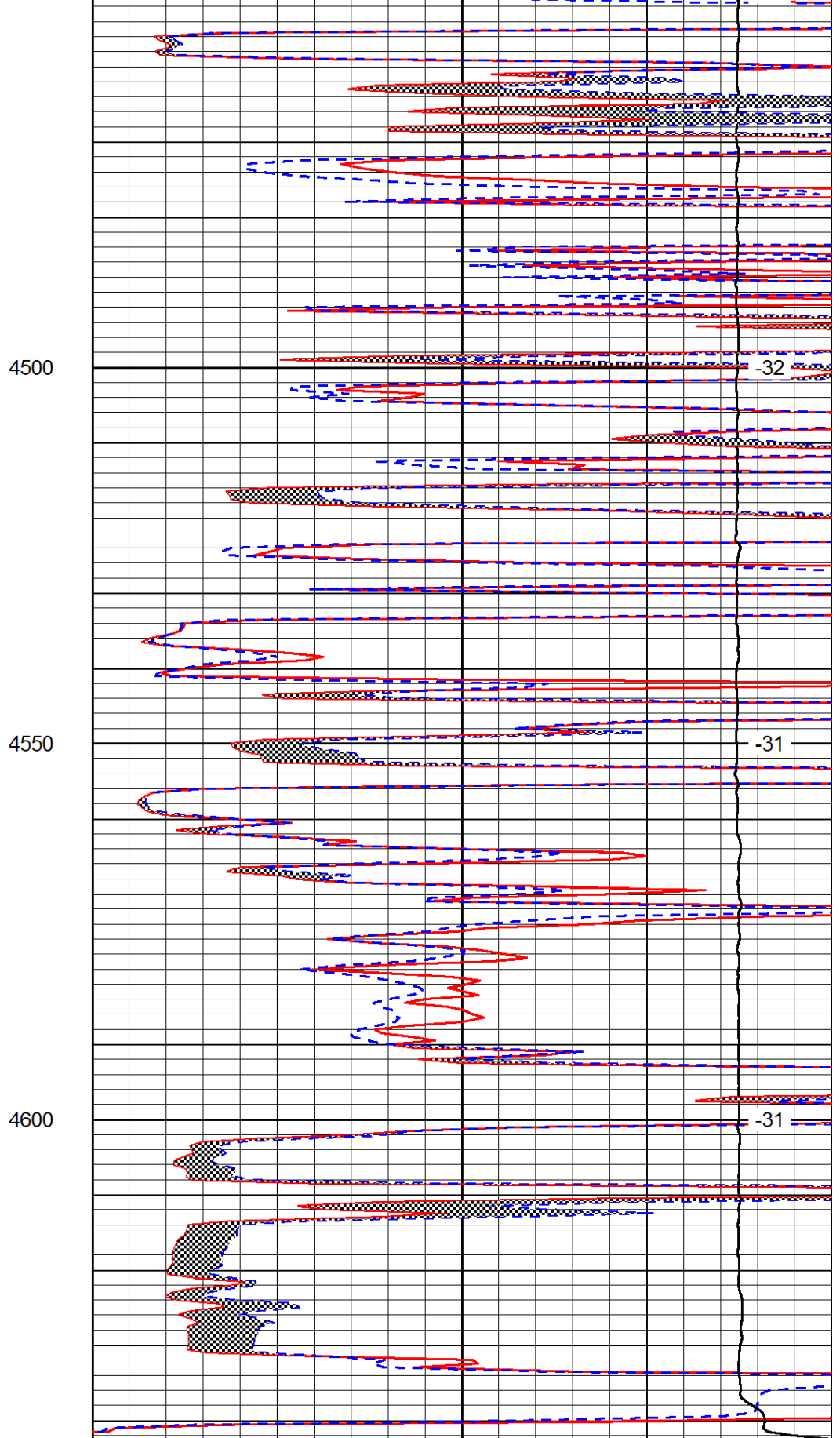
-31

-29

-29



0	Gamma Ray	150
6	Micro Log Caliper (GAPI)	16
-200	SP (mV)	0



0	Micro Inverse 1 X 1	40
0	Micro Normal 2"	40
15000	Line Weight	0

LSPD