



Dual Induction Log

DIGITAL LOG (785) 625-3858

API No.	15-015-23893-00-00	
Company	Vess Oil Corporation	
Well	Hess 'A' #32	
Field	El Dorado	
County	Butler	State Kansas
Location	S/2 - SW - SW - NW 2590' FNL & 330' FWL	
Sec: 18	Twp: 26 S	Rge: 5 E
Permanent Datum	Ground Level	Elevation 1348
Log Measured From	Kelly Bushing	6 Ft. Above Perm. Datum
Drilling Measured From	Kelly Bushing	K.B. 1354
		D.F. 1348
		G.L. 1348

Date	4/17/2011
Run Number	One
Depth Driller	2610
Depth Logger	2612
Bottom Logged Interval	2611
Top Log Interval	250
Casing Driller	8.625 @ 250
Casing Logger	258
Bit Size	7.875
Type Fluid in Hole	Chemical
Salinity, ppm CL	900
Density / Viscosity	9.4 62
pH / Fluid Loss	9.0 9.4
Source of Sample	Flowline
Rm @ Meas. Temp	2.70 @ 68
Rmf @ Meas. Temp	2.03 @ 68
Rmc @ Meas. Temp	3.65 @ 68
Source of Rmf / Rmc	Charts
Rm @ BHT	1.80 @ 102
Operating Rig Time	4 Hours
Max Rec. Temp. F	102
Equipment Number	15
Location	Hays
Recorded By	B. Becker
Witnessed By	Roger Martin

<<< Fold Here >>>

All interpretations are opinions based on inferences from electrical or other measurements and we cannot and do not guarantee the accuracy or correctness of any interpretation, and we shall not, except in the case of gross or willful negligence on our part, be liable or responsible for any loss, costs, damages, or expenses incurred or sustained by anyone resulting from any interpretation made by any of our officers, agents or employees. These interpretations are also subject to our general terms and conditions set out in our current Price Schedule.

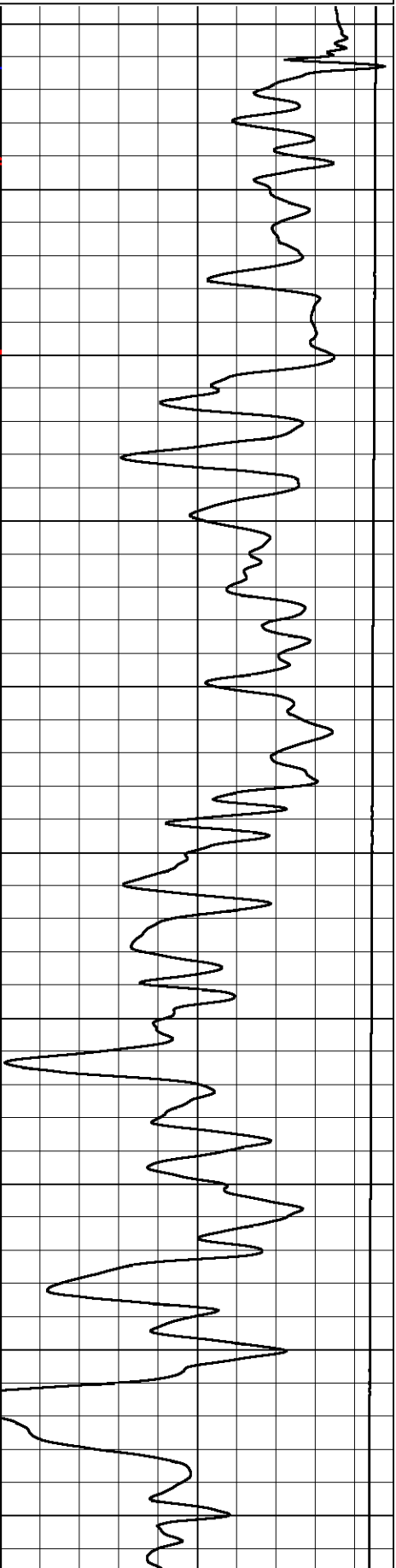
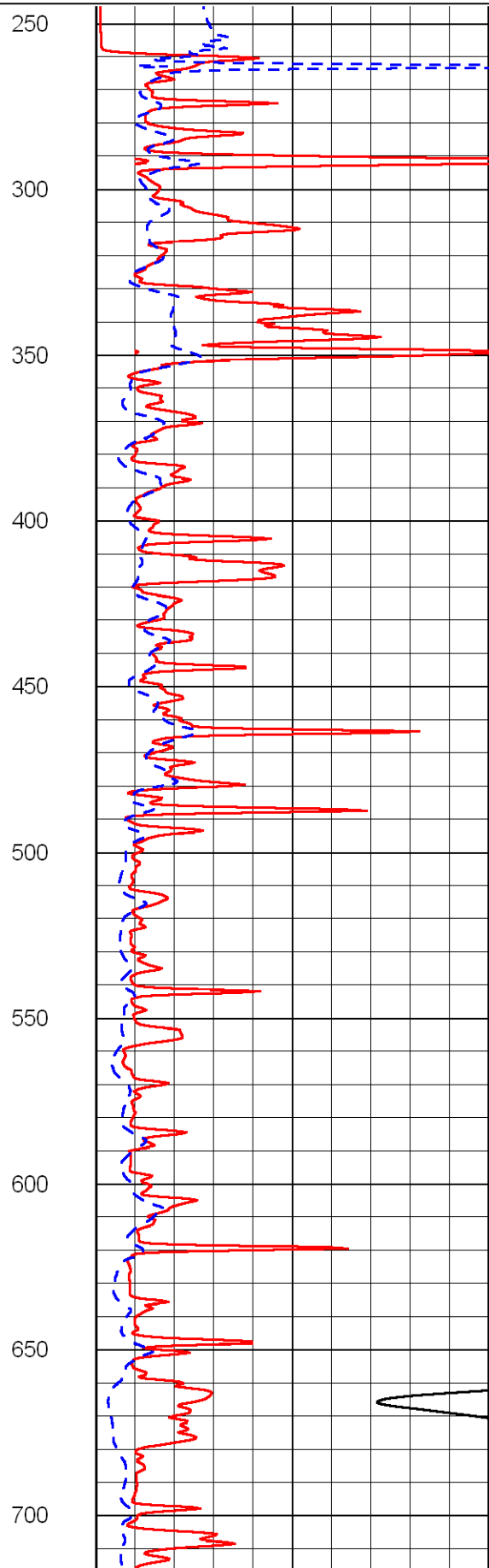
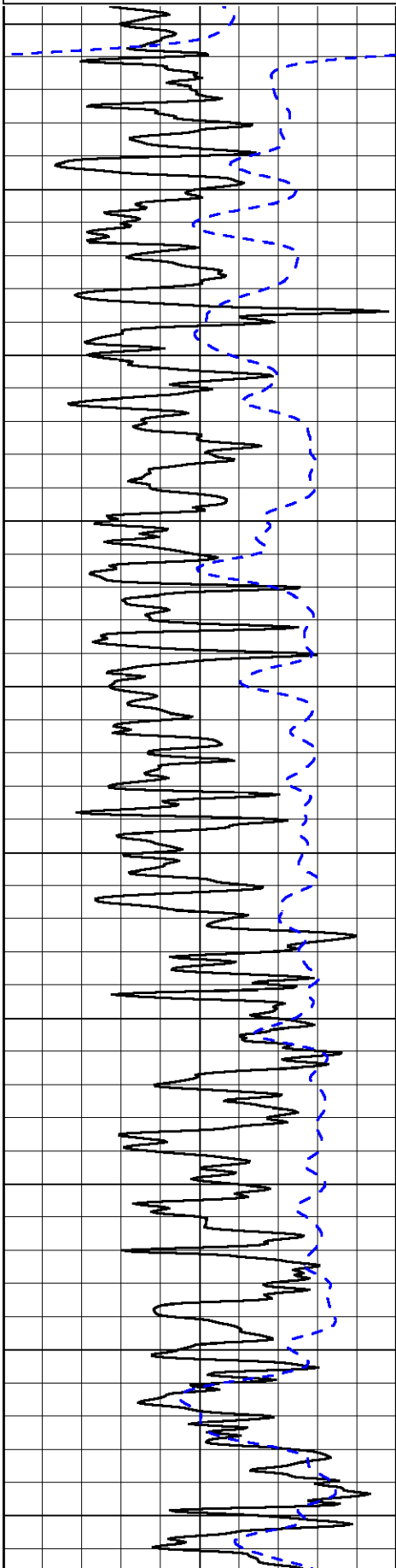
Comments

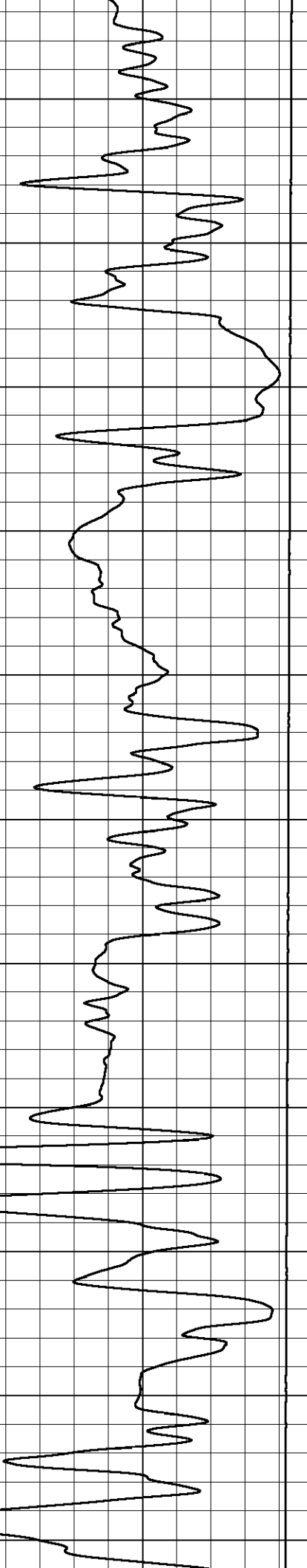
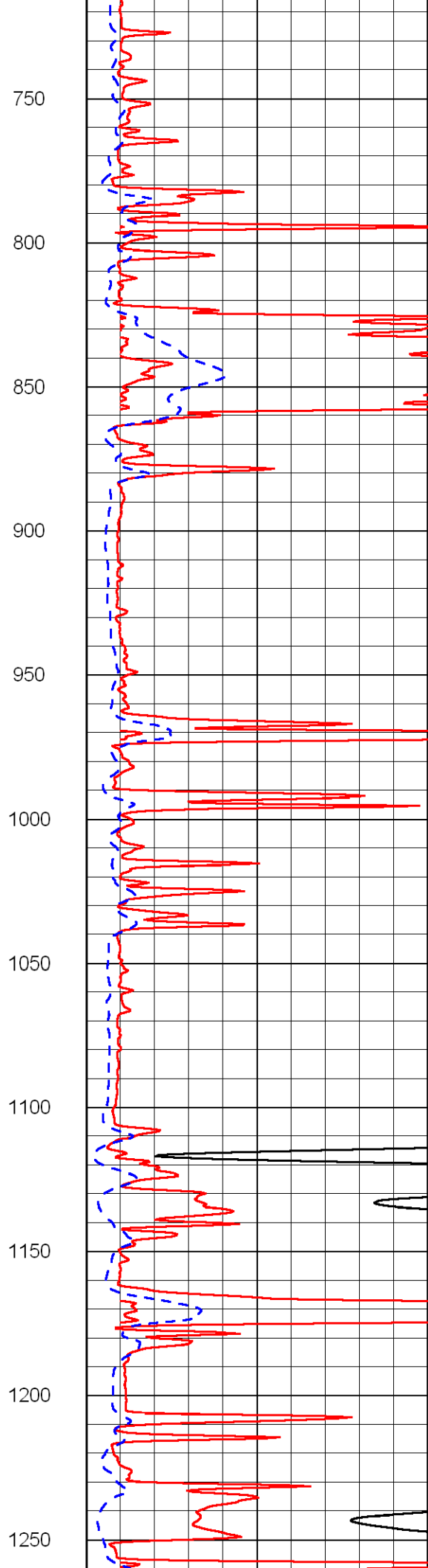
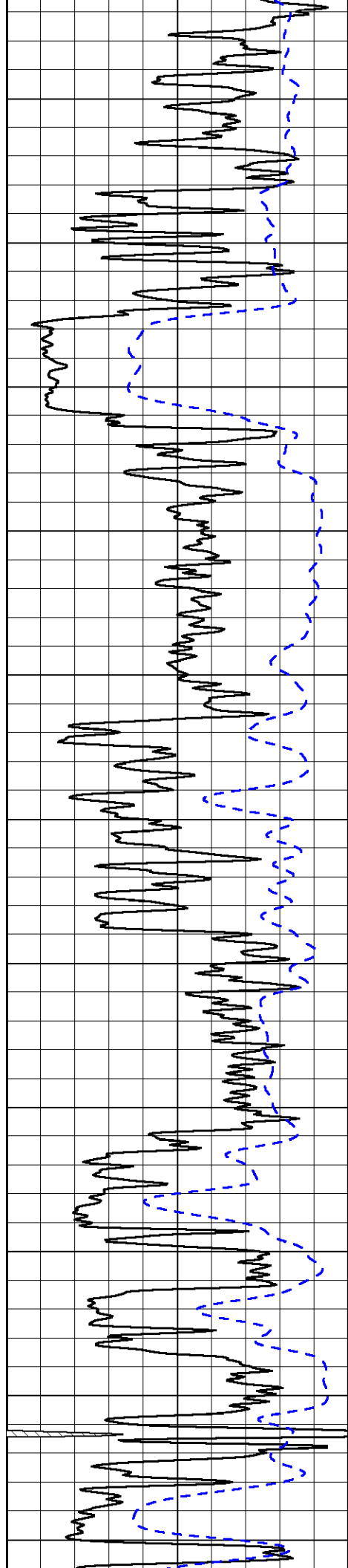
Thank you for using Log-Tech, Inc.
 (785) 625-3858
 Towanda, Ks;
 East on SW 20th to Hopkins Switch Rd
 (just past east side of I-35 overpass);
 3/4 South; East into (gated entrance)

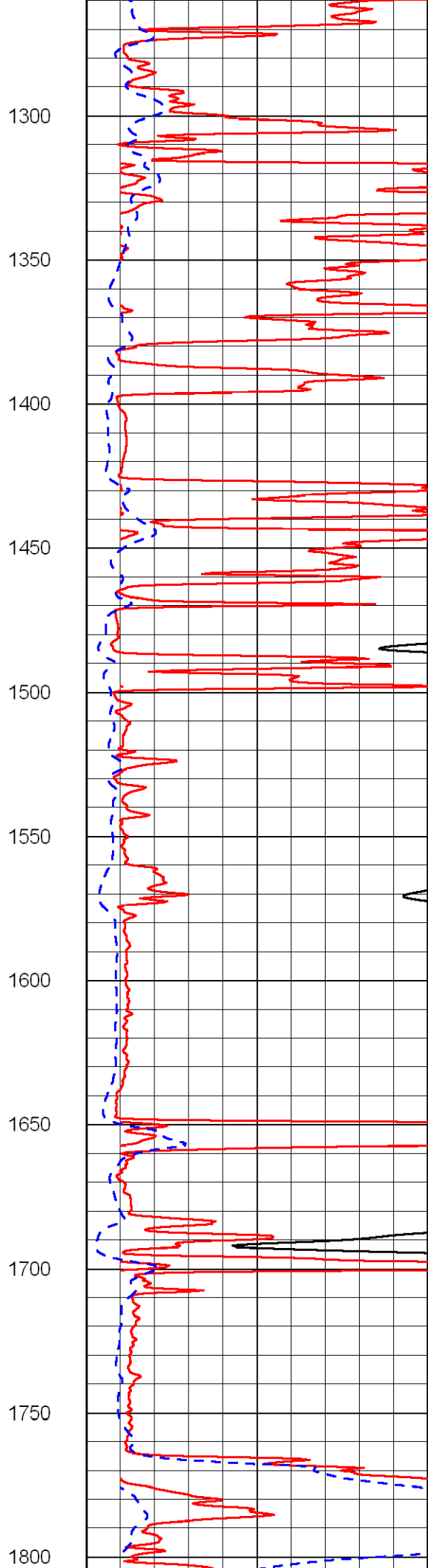
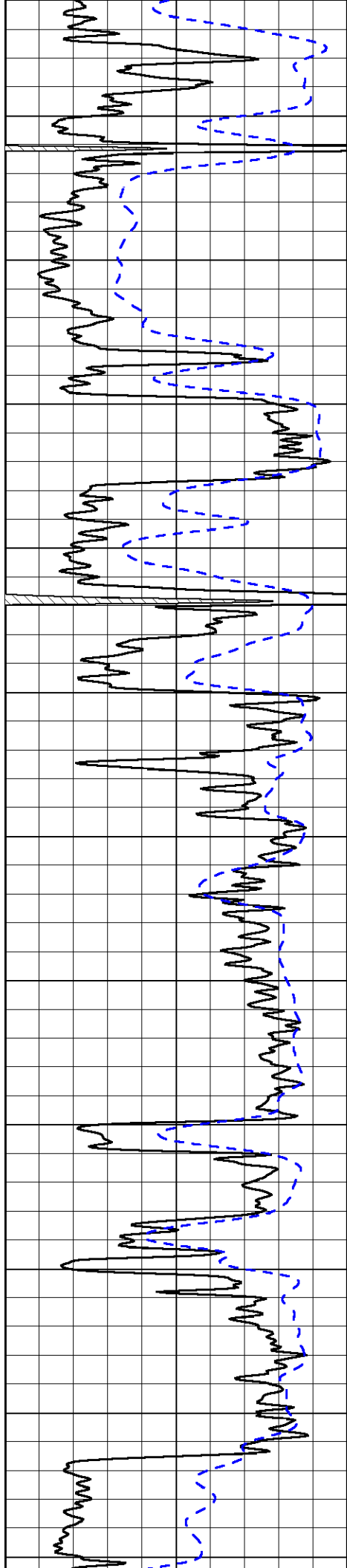
Database File: vesshd.db
 Dataset Pathname: DIL/vessstk
 Presentation Format: dil2in
 Dataset Creation: Sun Apr 17 23:58:13 2011
 Charted by: Depth in Feet scaled 1:600

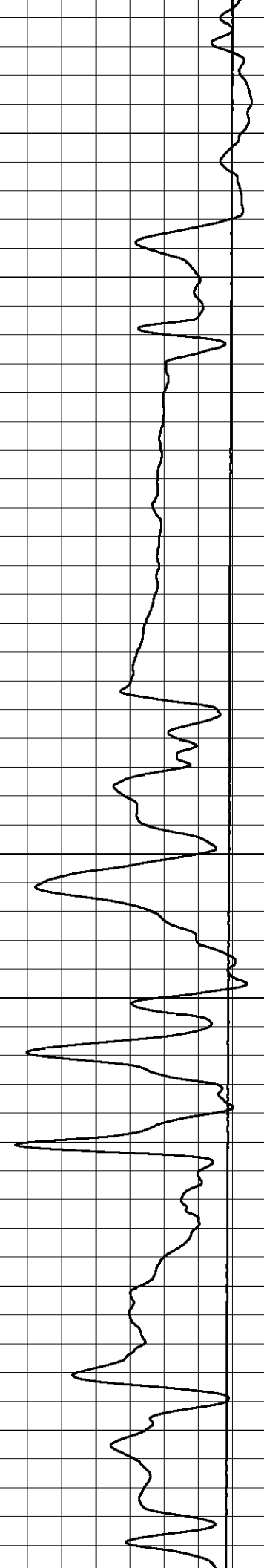
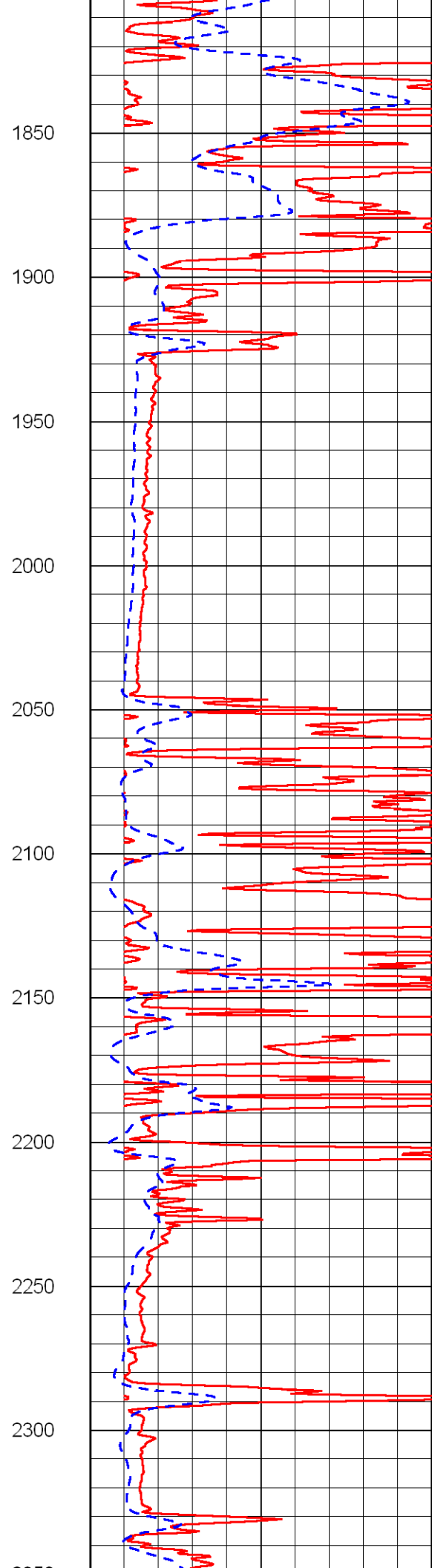
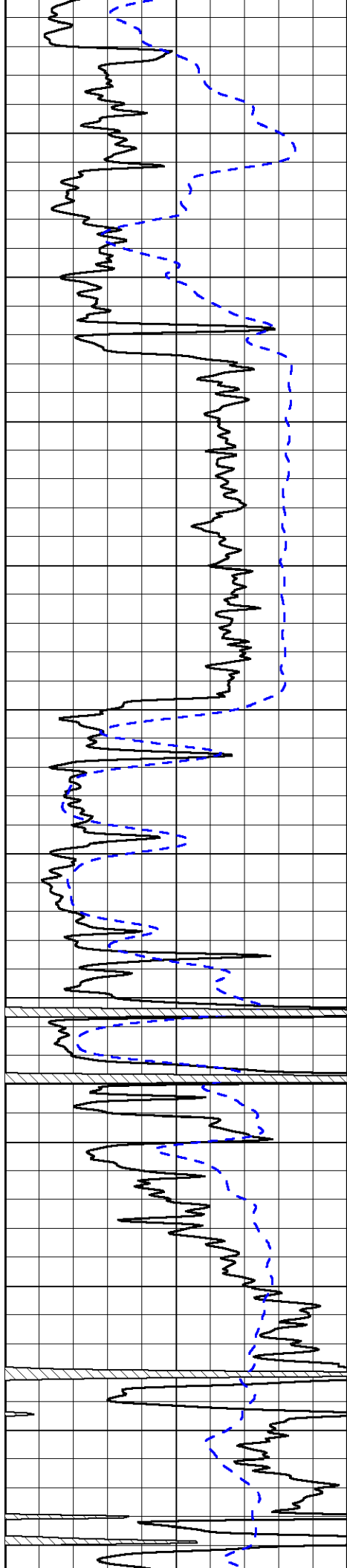
0 Gamma Ray 150
-200 SP 0

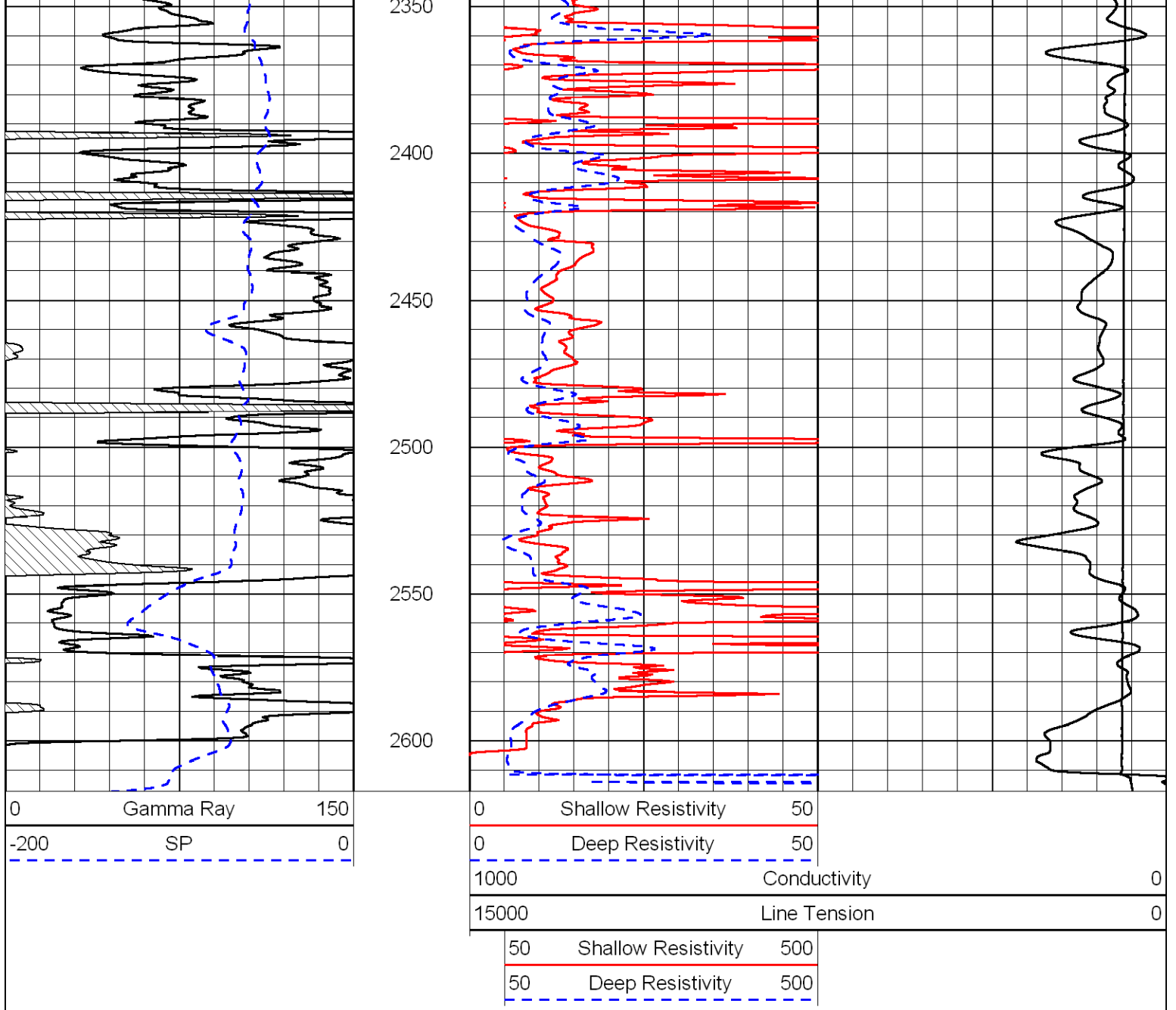
0 Shallow Resistivity 50
0 Deep Resistivity 50
1000 Conductivity 0
15000 Line Tension 0
50 Shallow Resistivity 500
50 Deep Resistivity 500



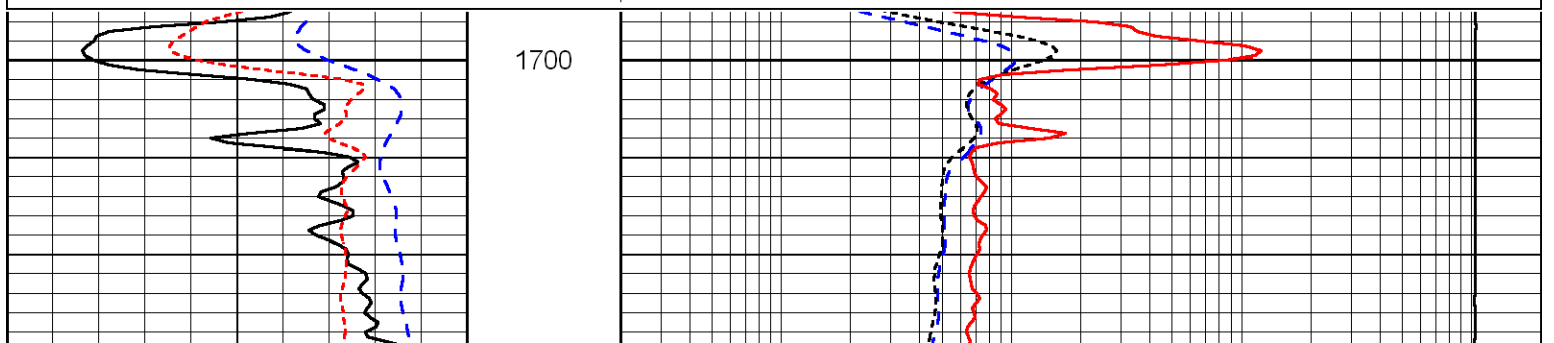
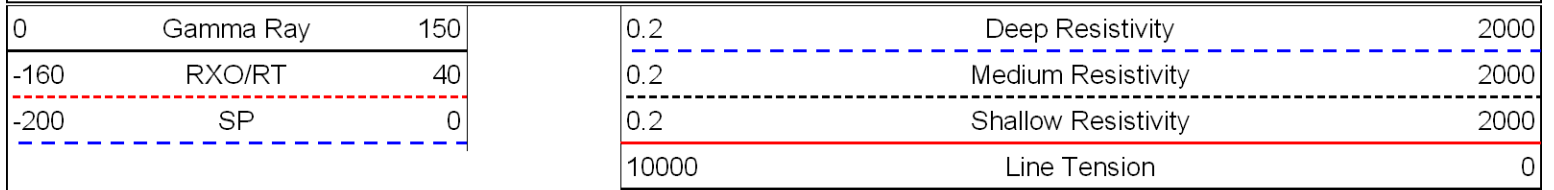


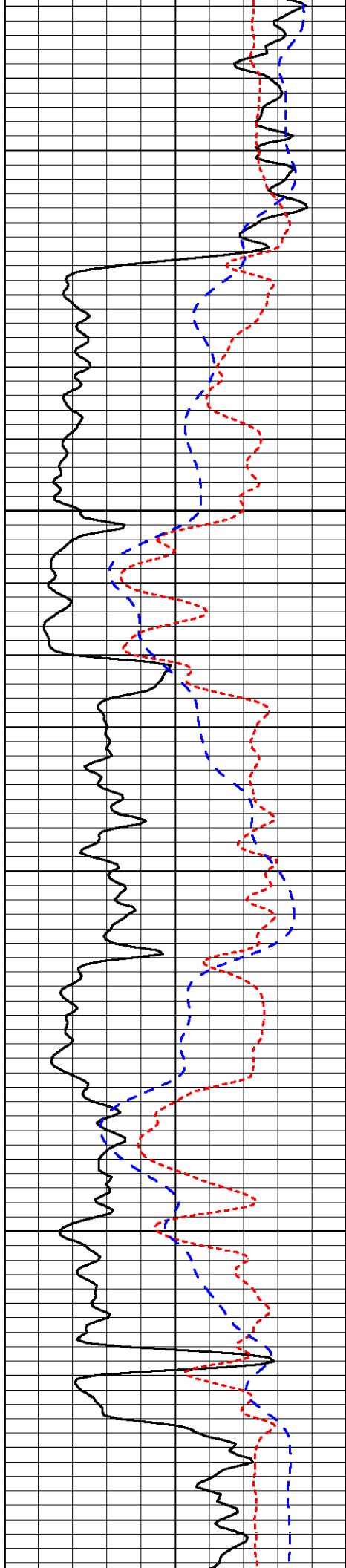






Database File: vesshd.db
 Dataset Pathname: DIL/vessstk
 Presentation Format: dil
 Dataset Creation: Sun Apr 17 23:58:13 2011
 Charted by: Depth in Feet scaled 1:240



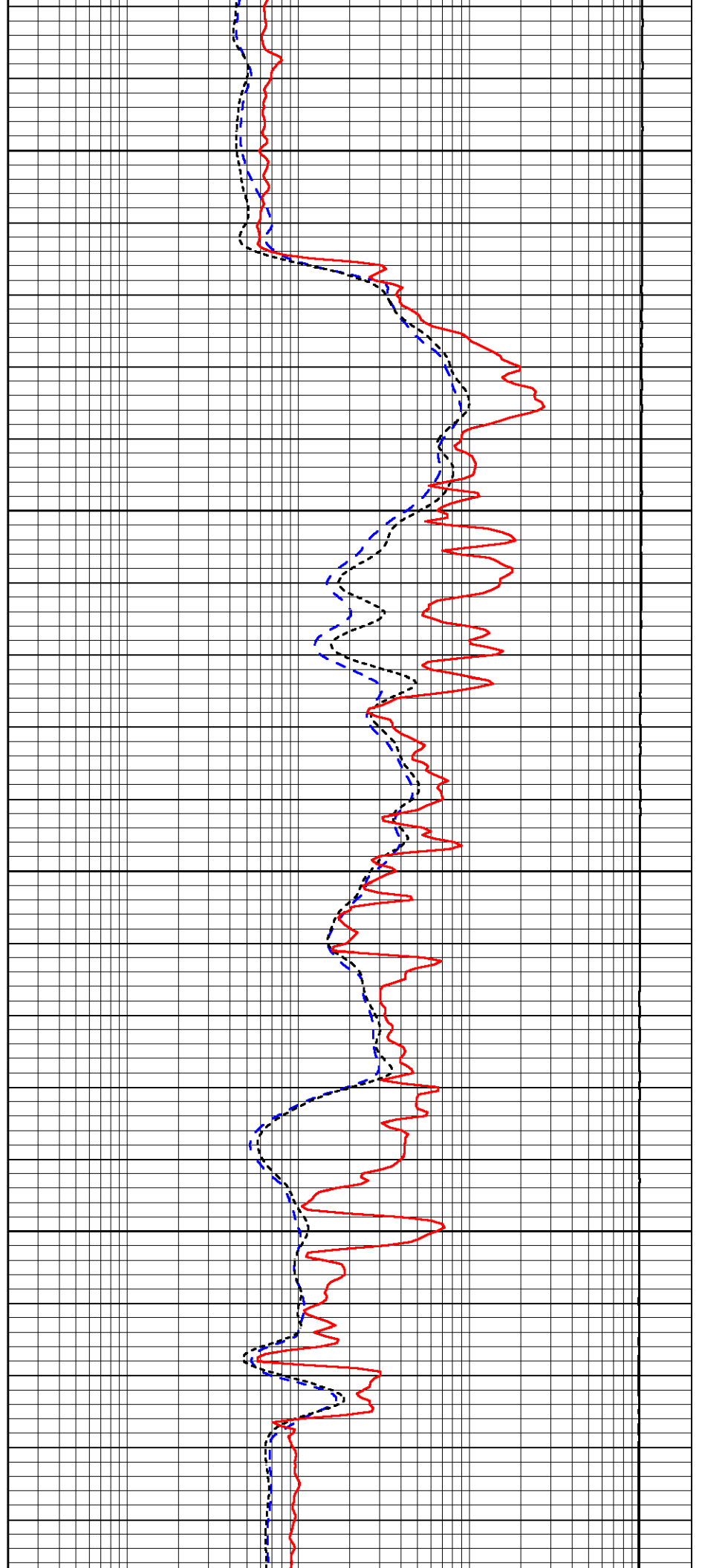


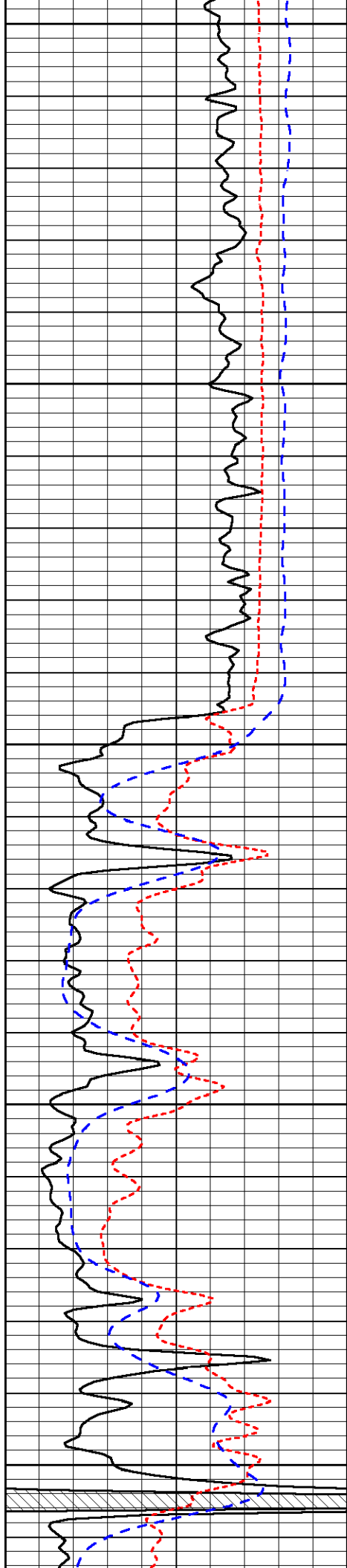
1750

1800

1850

1900





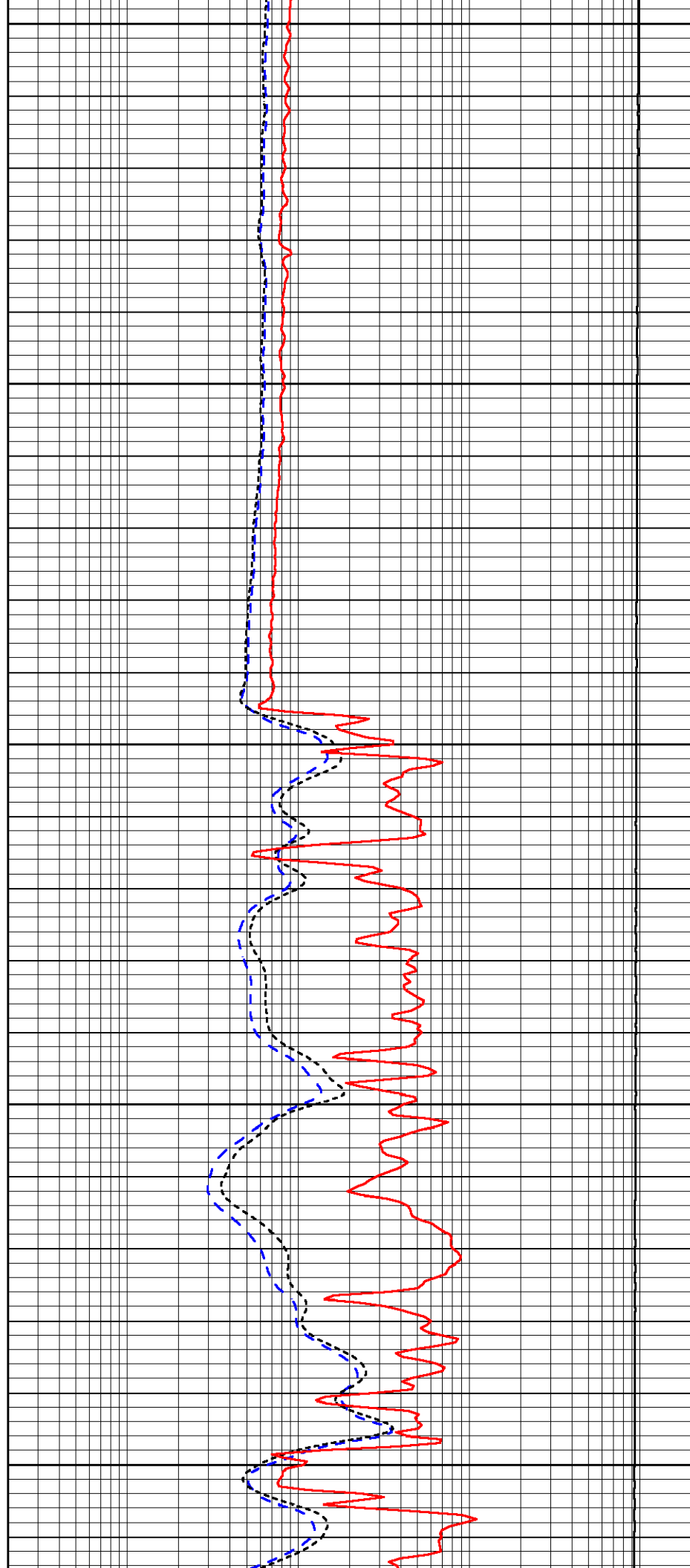
1950

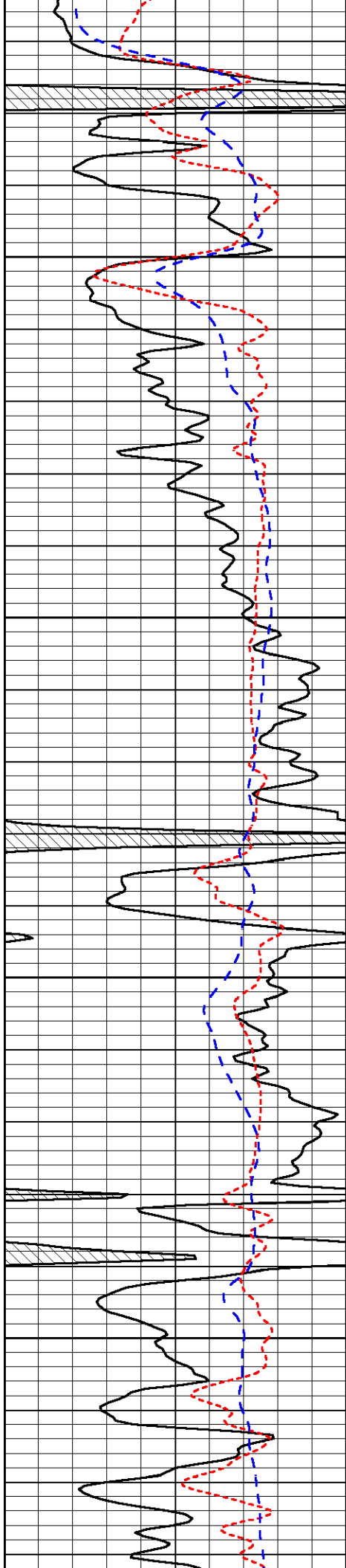
2000

2050

2100

2150



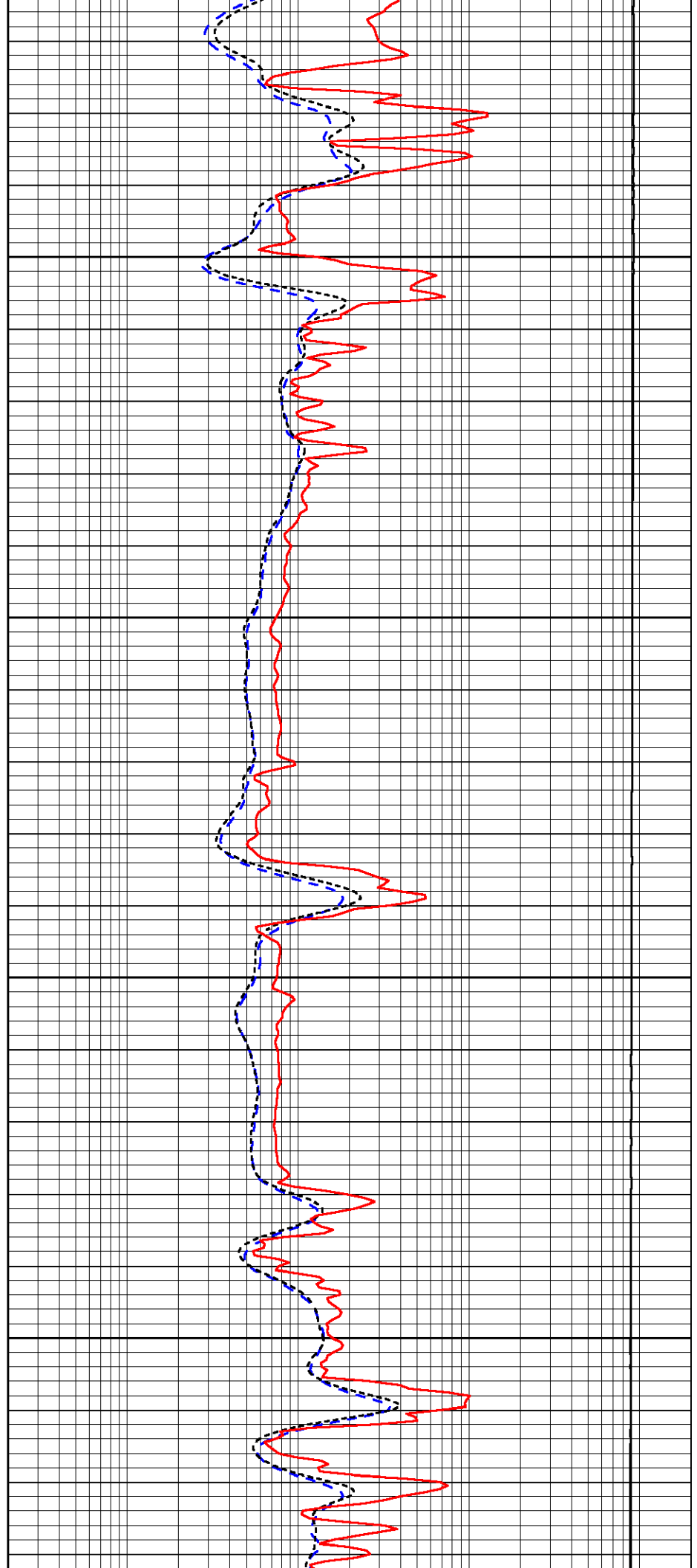


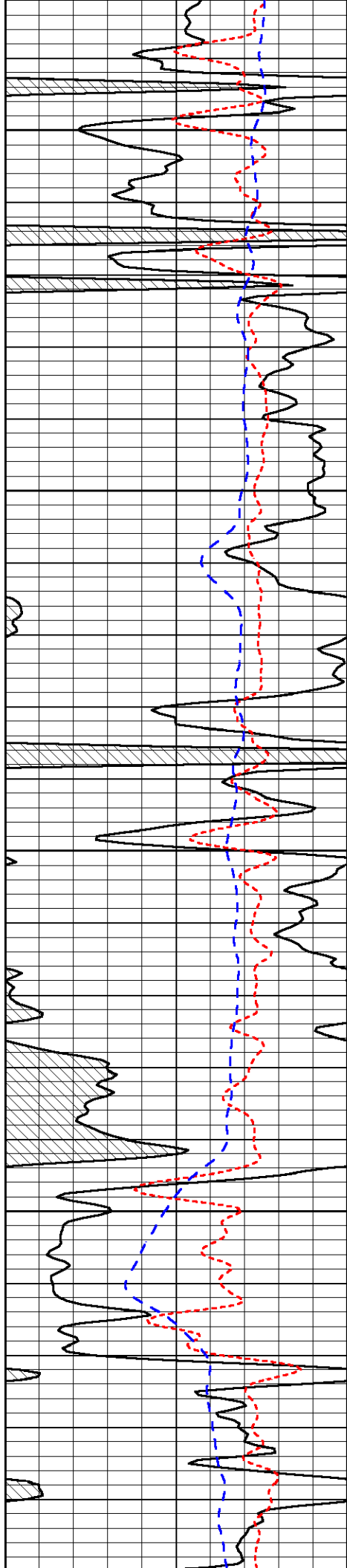
2200

2250

2300

2350





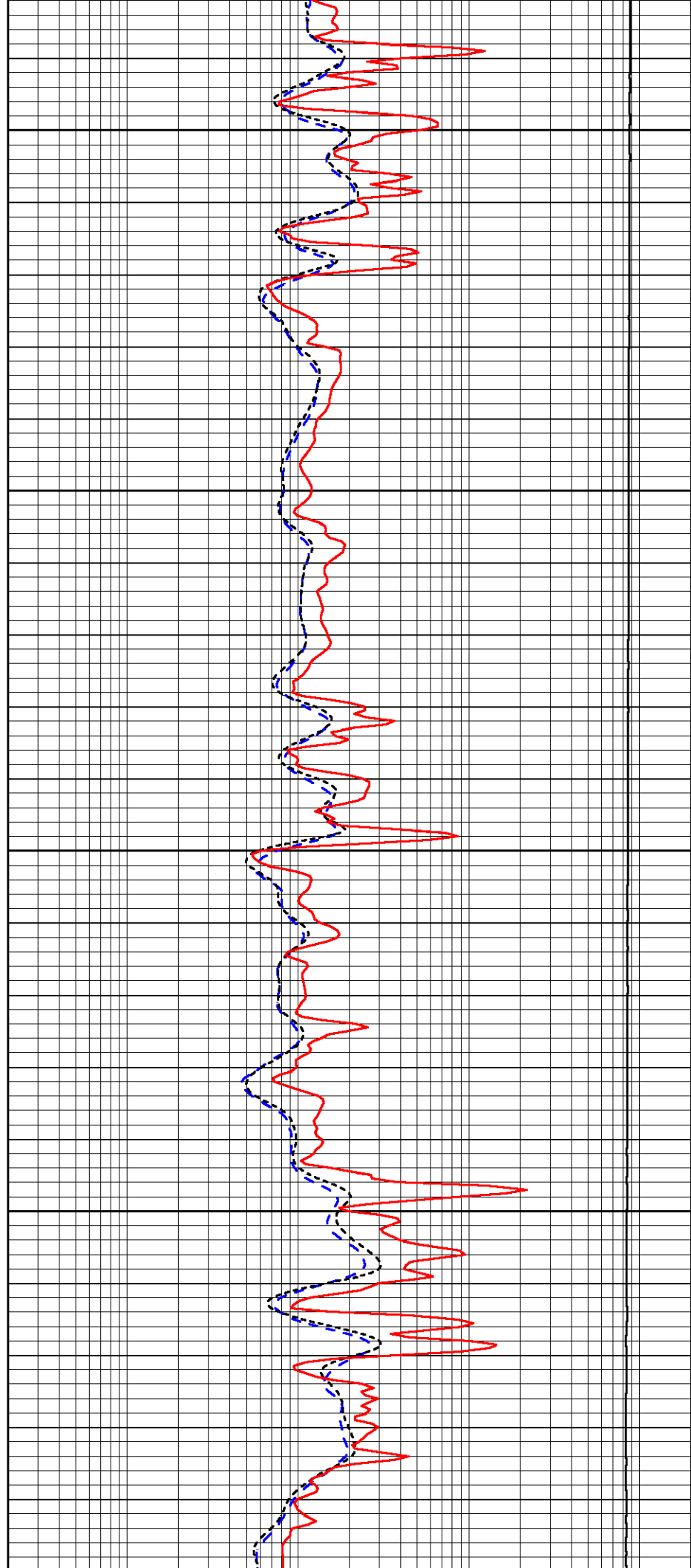
2400

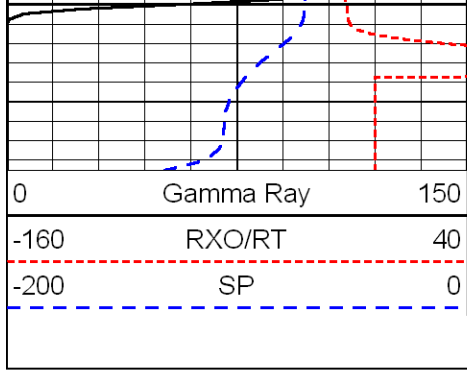
2450

2500

2550

2600





2600

