



Dual Compensated
Porosity Log

DIGITAL LOG (785) 625-3858

API No. 15-015-23893-00-00

Company Vess Oil Corporation
Well Hess 'A' #32
Field El Dorado
County Butler
State Kansas

Location S/2 - SW - SW - NW
2590' FNL & 330' FWL

Sec: 18 Twp: 26 S Rge: 5 E

Other Services
DIL/MEL

Permanent Datum Ground Level Elevation 1348
Log Measured From Kelly Bushing 6 Ft. Above Perm. Datum
Drilling Measured From Kelly Bushing

Elevation
K.B. 1354
D.F. 1348
G.L. 1348

Date 4/17/2011

Run Number One

Type Log CNL / CDL

Depth Driller 2610

Depth Logger 2612

Bottom Logged Interval 2591

Top Logged Interval 1700

Type Fluid In Hole Chemical

Salinity, PPM CL 900

Density 9.4

Level Full

Max. Rec. Temp. F 102

Operating Rig Time 4 Hours

Equipment -- Location 15 Hays

Recorded By B. Becker

Witnessed By Roger Martin

Borehole Record				Casing Record			
Run No	Bit	From	To	Size	Wgt. 23#	From	To
One	12.25	00	250	8.625		00	250
Two	7.875	250	TD				

<<< Fold Here >>>

All interpretations are opinions based on inferences from electrical or other measurements and we cannot and do not guarantee the accuracy or correctness of any interpretation, and we shall not, except in the case of gross or willful negligence on our part, be liable or responsible for any loss, costs, damages, or expenses incurred or sustained by anyone resulting from any interpretation made by any of our officers, agents or employees. These interpretations are also subject to our general terms and conditions set out in our current Price Schedule.

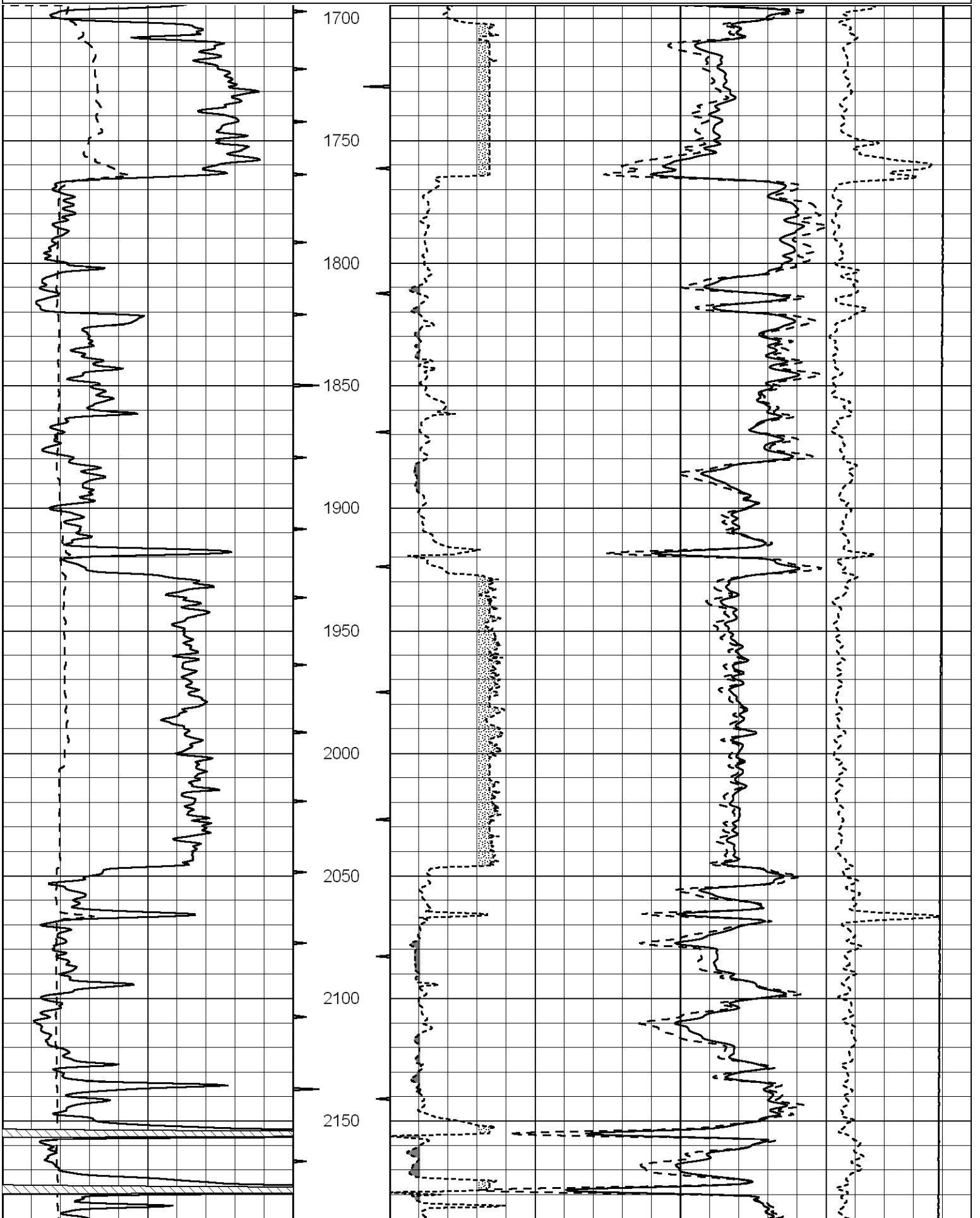
Comments

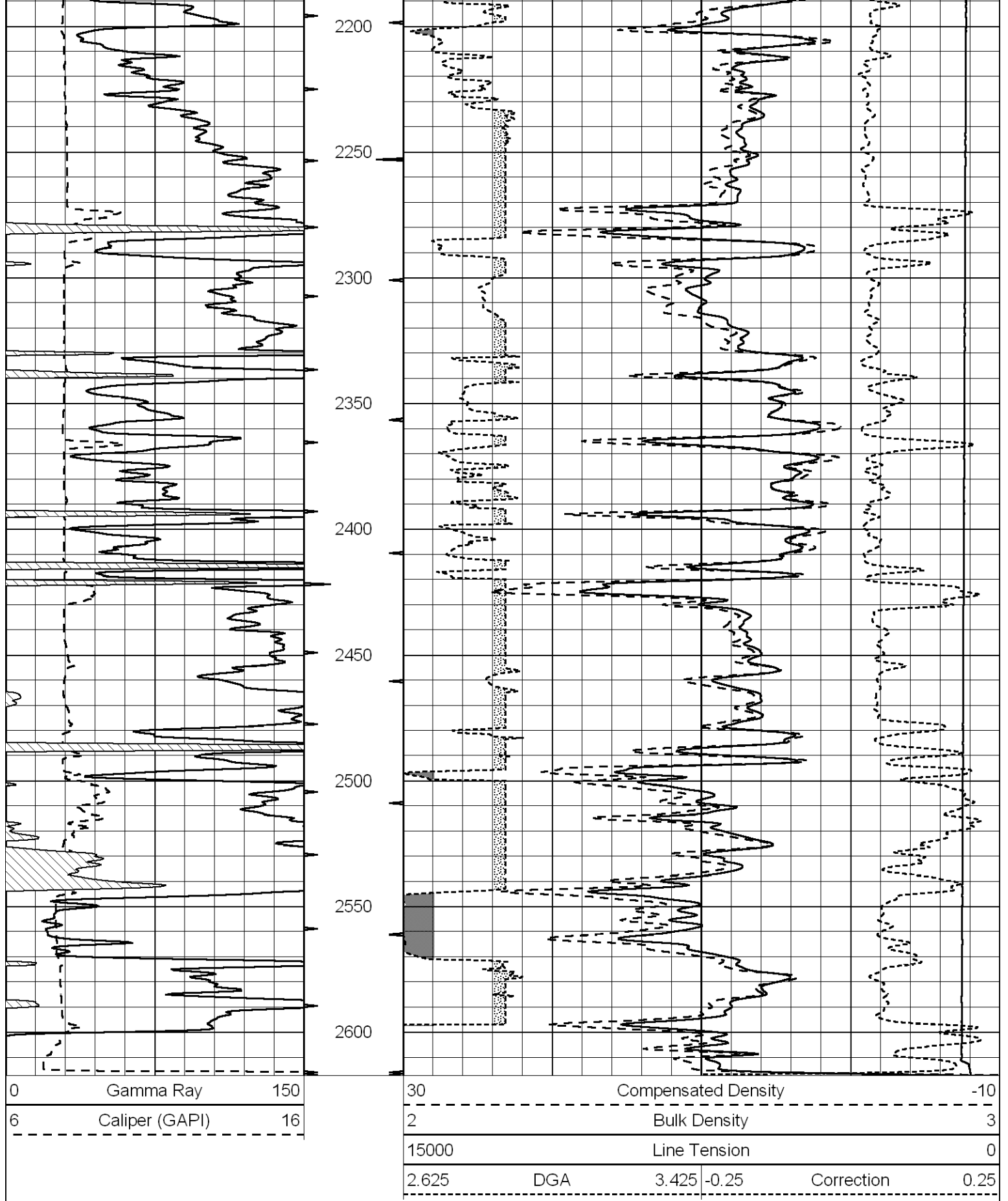
Thank you for using Log-Tech, Inc.
(785) 625-3858
Towanda, Ks;
East on SW 20th to Hopkins Switch Rd
(just past east side of I-35 overpass);
3/4 South; East into (gated entrance)

Database File: vesshd.db
Dataset Pathname: DIL/vessstk
Presentation Format: cdl
Dataset Creation: Sun Apr 17 23:58:13 2011
Charted by: Depth in Feet scaled 1:600

0	Gamma Ray	150
6	Caliper (GAPI)	16

30	Compensated Density	-10			
2	Bulk Density	3			
15000	Line Tension	0			
2.625	DGA	3.425	-0.25	Correction	0.25





Database File: vesshd.db
 Dataset Pathname: DIL/vessstk
 Presentation Format: cndlspec
 Dataset Creation: Sun Apr 17 23:58:13 2011
 Charted by: Depth in Feet scaled 1:240

0	Gamma Ray	150
6	Caliper (GAPI)	16

30	CNLS			-10	
30	Compensated Density (2.71 ma)			-10	
2.625	DGA	3.425	-0.25	Correction	0.25
10000	Line Tension			0	

