



Microresistivity Log

DIGITAL LOG

(785) 625-3858

15-015-23893-00-00

API No.

Company Vess Oil Corporation

Well Hess 'A' #32

Field El Dorado

County Butler

State

Kansas

Location

S/2 - SW - SW - NW
2590' FNL & 330' FWL

Other Services
CNL/CDL
DIL

Sec: 18

Twp: 26 S

Rge: 5 E

Elevation

K.B. 1354
D.F. 1348
G.L. 1348

Permanent Datum Ground Level

Elevation 1348

Log Measured From Kelly Bushing

6 Ft. Above Perm. Datum

Drilling Measured From Kelly Bushing

Date

4/17/2011

Run Number

Two

Depth Driller

2610

Depth Logger

2612

Bottom Logged Interval

2611

Top Log Interval

1700

Casing Driller

8.625 @ 250

Casing Logger

258

Bit Size

7.875

Type Fluid in Hole

Chemical

Salinity, ppm CL

900

Density / Viscosity

9.4 62

pH / Fluid Loss

9.0 9.4

Source of Sample

Flowline

Rm @ Meas. Temp

2.70 @ 68

Rmf @ Meas. Temp

2.03 @ 68

Rmc @ Meas. Temp

3.65 @ 68

Source of Rmf / Rmc

Charts

Rm @ BHT

1.80 @ 102

Operating Rig Time

4 Hours

Max Rec. Temp. F

102

Equipment Number

15

Location

Hays

Recorded By

B. Becker

Witnessed By

Roger Martin

<<< Fold Here >>>

All interpretations are opinions based on inferences from electrical or other measurements and we cannot and do not guarantee the accuracy or correctness of any interpretation, and we shall not, except in the case of gross or willful negligence on our part, be liable or responsible for any loss, costs, damages, or expenses incurred or sustained by anyone resulting from any interpretation made by any of our officers, agents or employees. These interpretations are also subject to our general terms and conditions set out in our current Price Schedule.

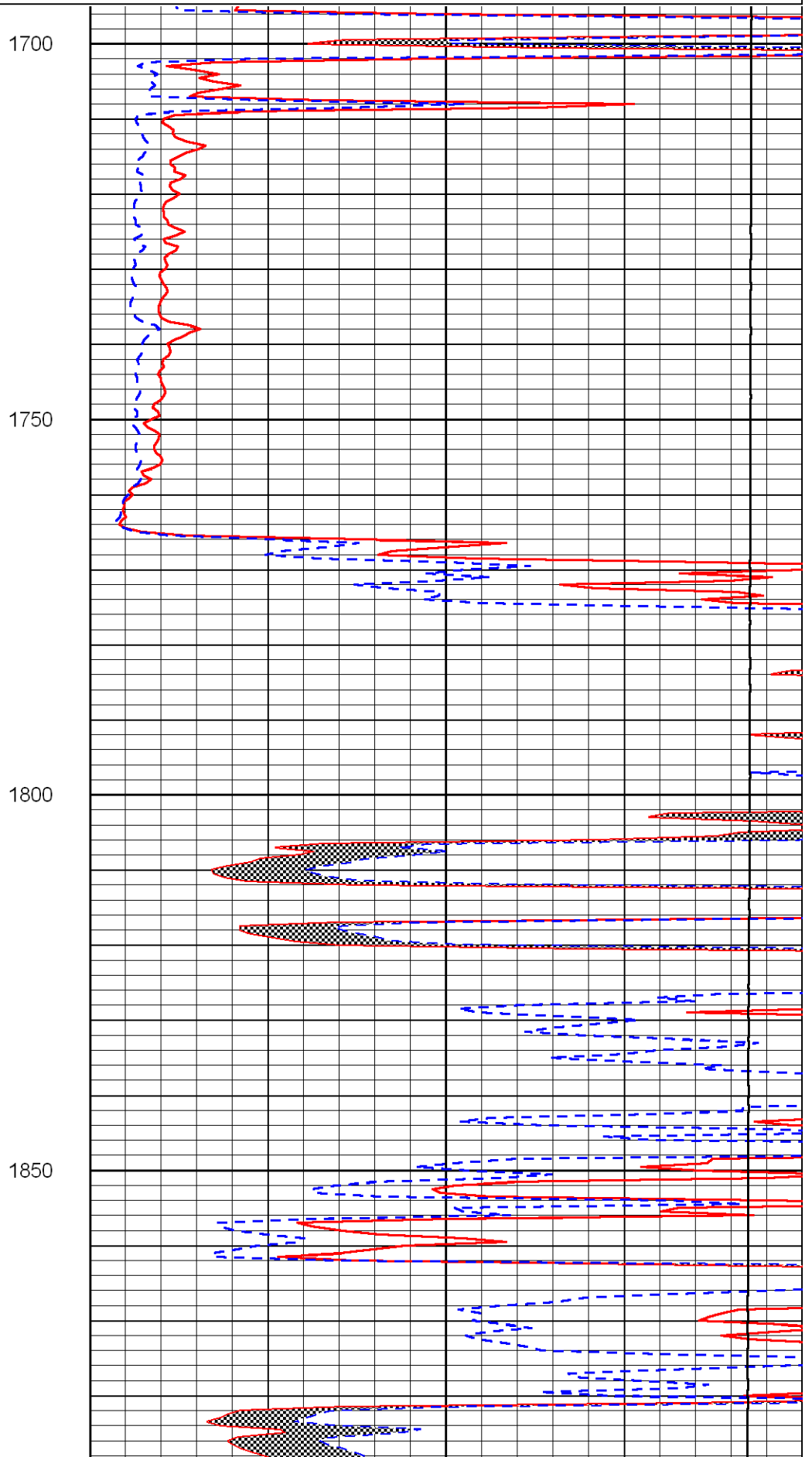
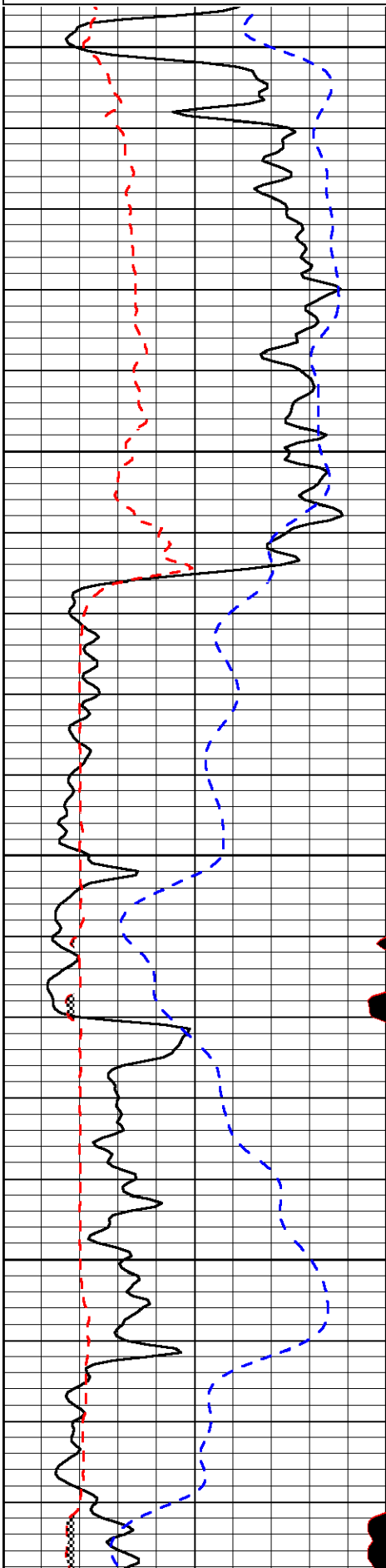
Comments

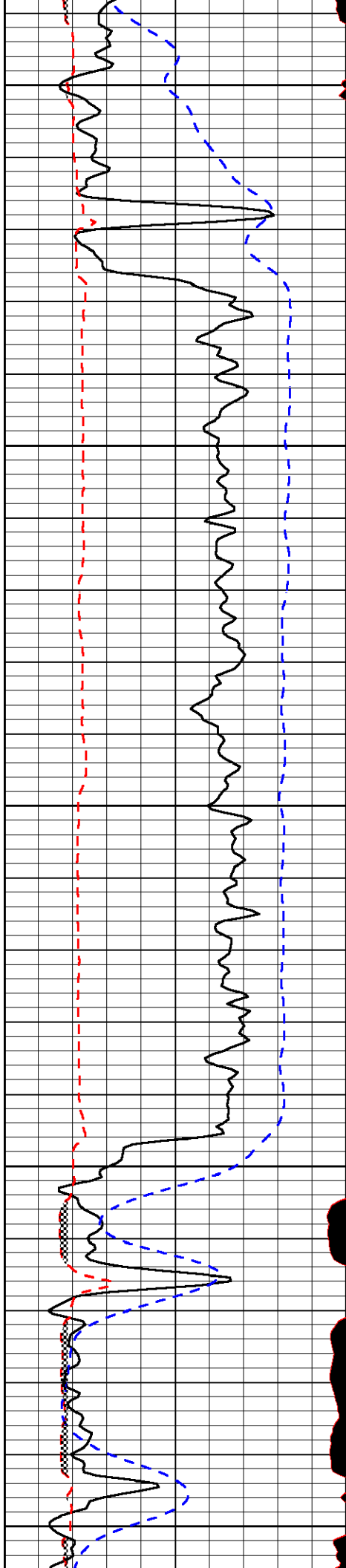
Thank you for using Log-Tech, Inc.
(785) 625-3858
Towanda, Ks;
East on SW 20th to Hopkins Switch Rd
(just past east side of I-35 overpass);
3/4 South; East into (gated entrance)

Database File: vesshd.db
Dataset Pathname: DIL/vessstk
Presentation Format: micro
Dataset Creation: Sun Apr 17 23:58:13 2011
Charted by: Depth in Feet scaled 1:240

0	Gamma Ray	150
6	MCAL (GAPI)	16
2.875	Mud Cake (GAPI)	7.875
-200	SP	0

0	Micro Inverse 1 X 1	40
0	Micro Normal 2"	40
10000	Line Weight	0





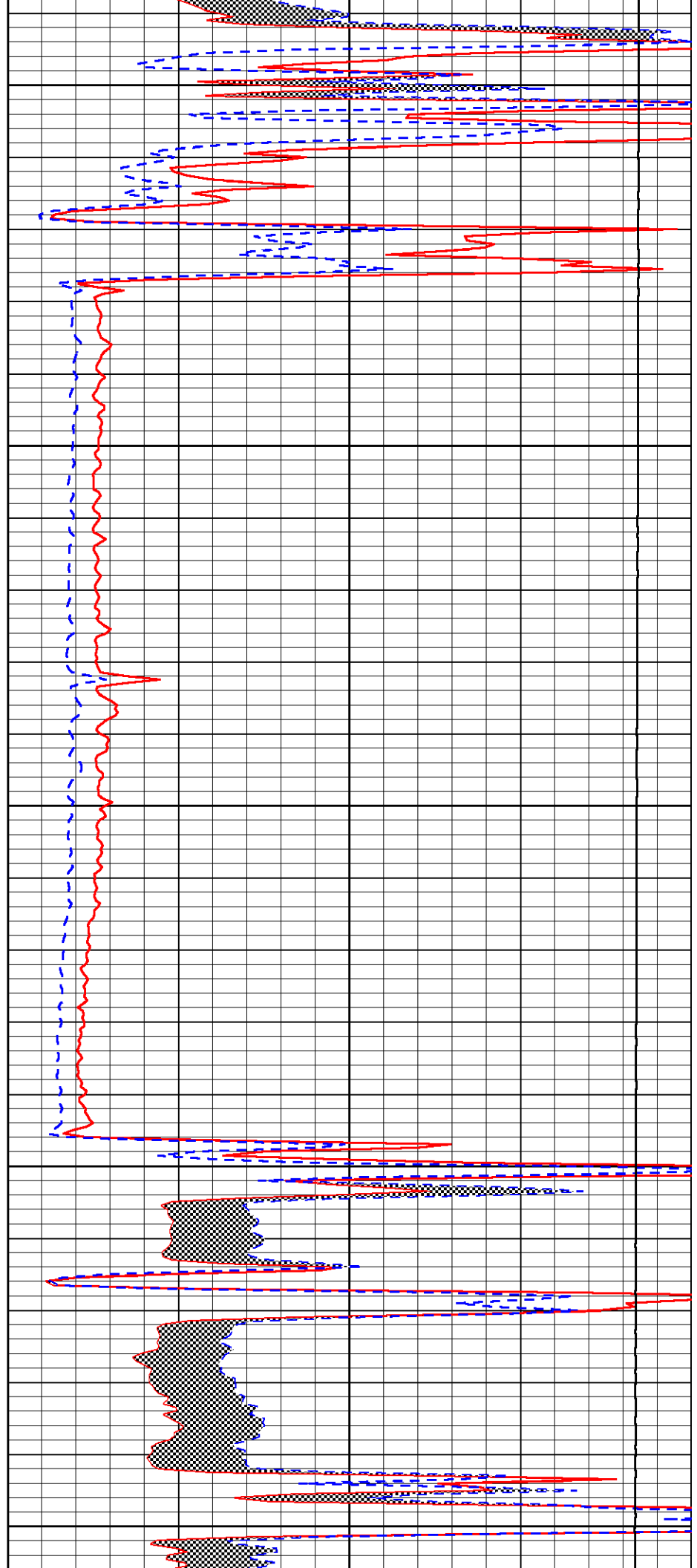
1900

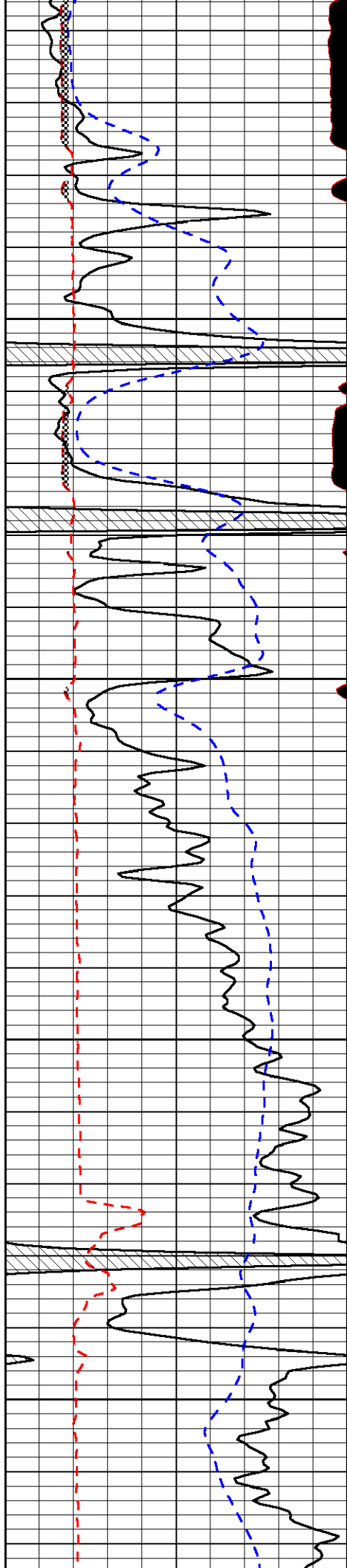
1950

2000

2050

2100



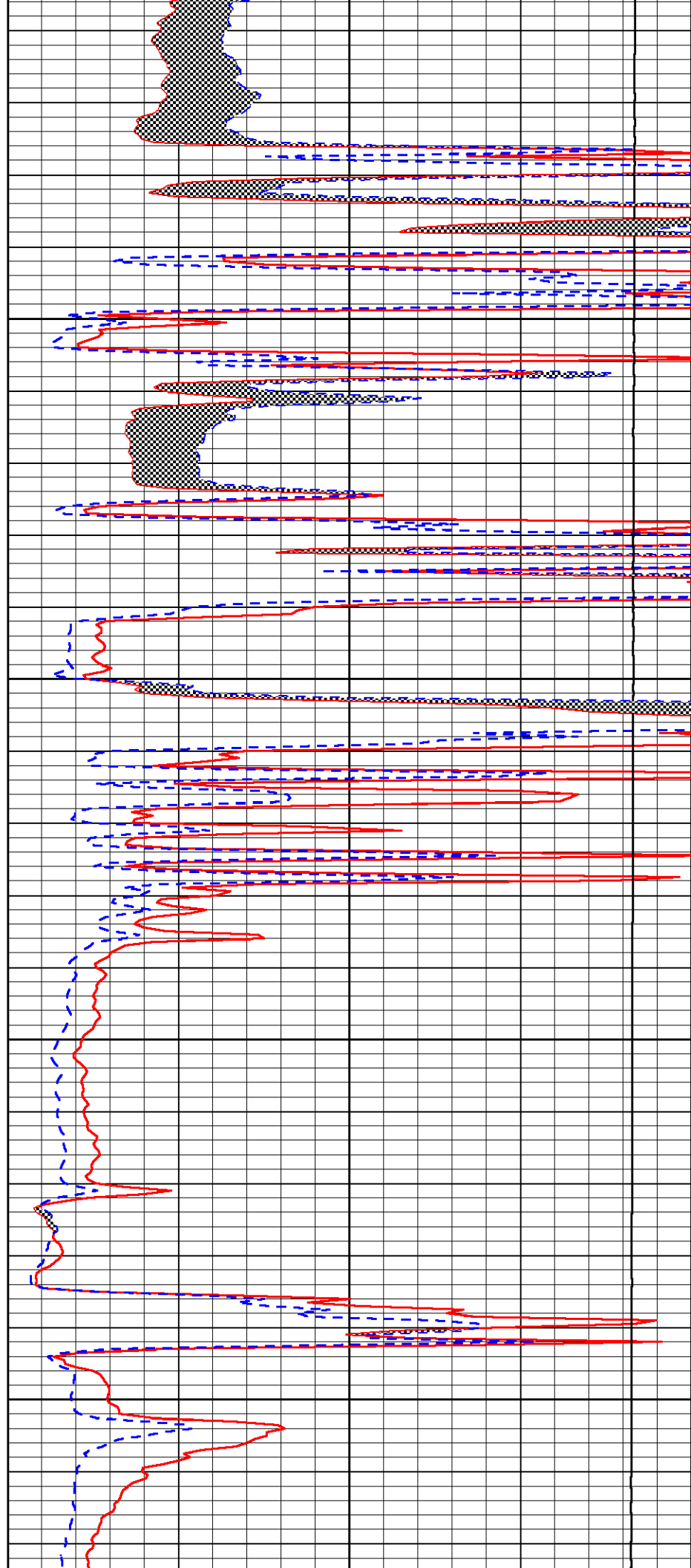


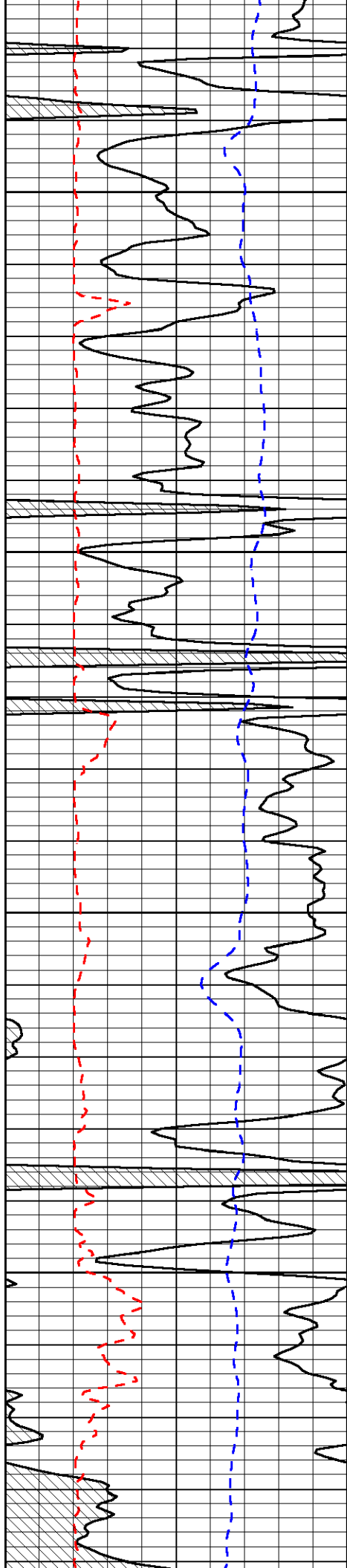
2150

2200

2250

2300



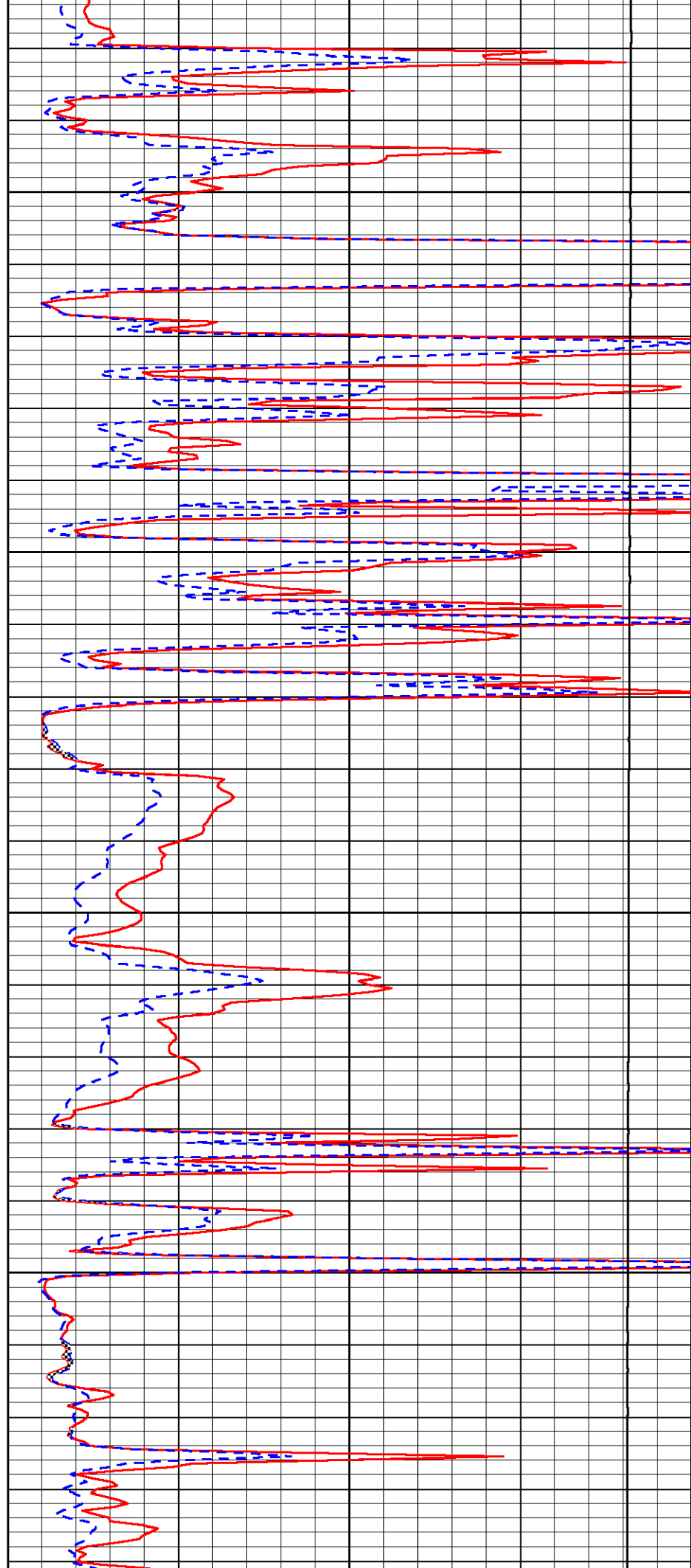


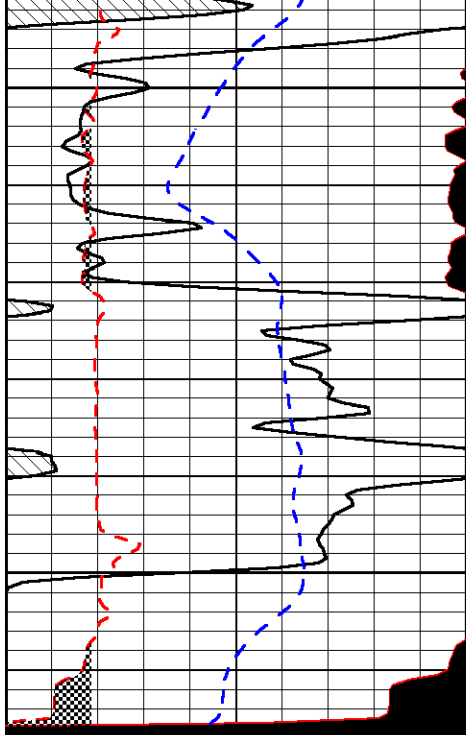
2350

2400

2450

2500

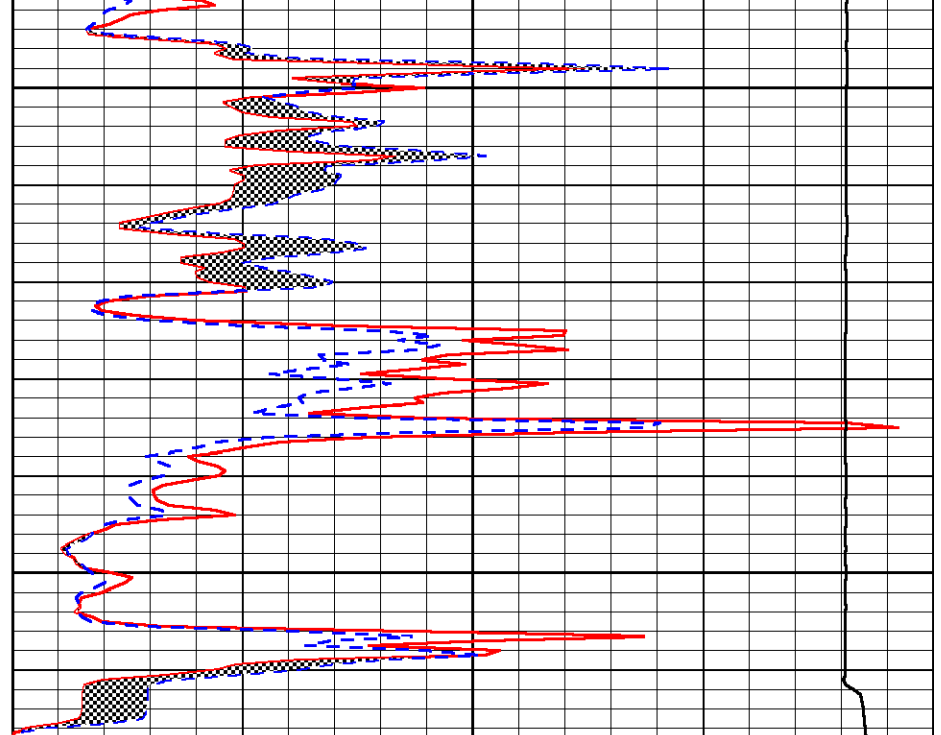




0	Gamma Ray	150
6	MCAL (GAPI)	16
2.875	Mud Cake (GAPI)	7.875
-200	SP	0

2550

2600



0	Micro Inverse 1 X 1	40
0	Micro Normal 2''	40
10000	Line Weight	0