



# Microresistivity Log

**DIGITAL LOG (785) 625-3858**

API No. 15-015-23,891-00-00	Company <b>Vess Oil Corporation</b>	Other Services CNL/CDL DIL
	Well <b>Koogler "A" No. 301</b>	
	Field <b>El Dorado</b>	
	County <b>Butler</b>	State <b>Kansas</b>
	Location <b>E2 E2 NW/NW 660' FNL &amp; 1,025' FWL</b>	
	Sec: <b>19</b>	Twp: <b>26 S</b> Rge: <b>5 E</b>

Permanent Datum Ground Level Elevation 1342	Log Measured From Kelly Bushing 6 Ft. Above Perm. Datum
Drilling Measured From Kelly Bushing	
Date 4/26/2011	
Run Number Three	
Depth Driller 2590	
Depth Logger 2590	
Bottom Logged Interval 2589	
Top Log Interval 1400	
Casing Driller 8.625 @ 260	
Casing Logger 268	
Bit Size 8.625	
Type Fluid in Hole Chemical	
Salinity, ppm CL 800	
Density / Viscosity 9.3   51	
pH / Fluid Loss 9.0   9.6	
Source of Sample Flowline	
Rm @ Meas. Temp 1.70 @ 62	
Rmf @ Meas. Temp 1.28 @ 62	
Rmc @ Meas. Temp 2.30 @ 62	
Source of Rmf / Rmc Charts	
Rm @ BHT 1.03 @ 102	
Operating Rig Time 5 Hours	
Max Rec. Temp. F 102	
Equipment Number 10	
Location Hays	
Recorded By Jim Schuler	
Witnessed By Roger Martin	

<<< Fold Here >>>

All interpretations are opinions based on inferences from electrical or other measurements and we cannot and do not guarantee the accuracy or correctness of any interpretation, and we shall not, except in the case of gross or willful negligence on our part, be liable or responsible for any loss, costs, damages, or expenses incurred or sustained by anyone resulting from any interpretation made by any of our officers, agents or employees. These interpretations are also subject to our general terms and conditions set out in our current Price Schedule.

**Comments**

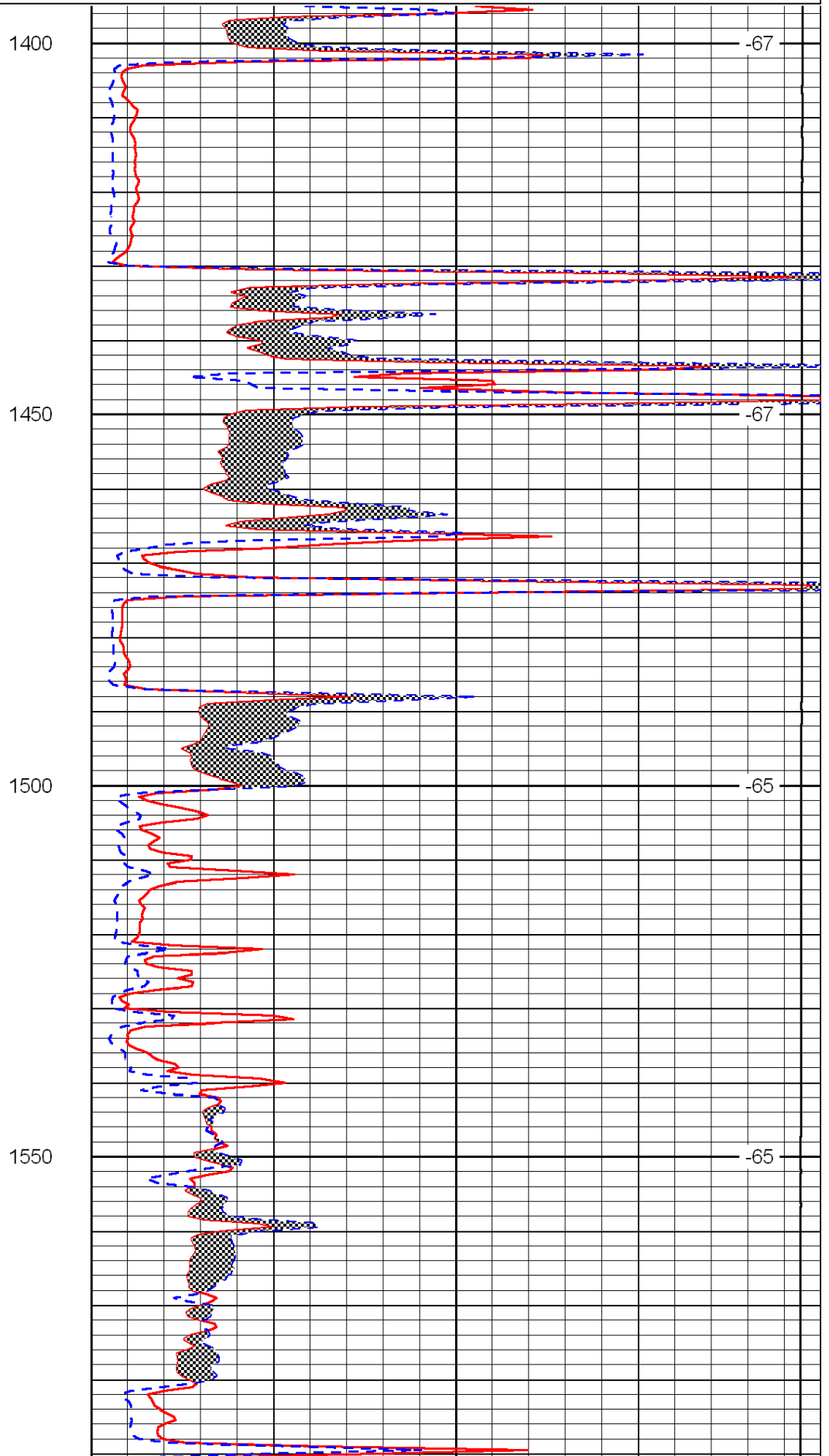
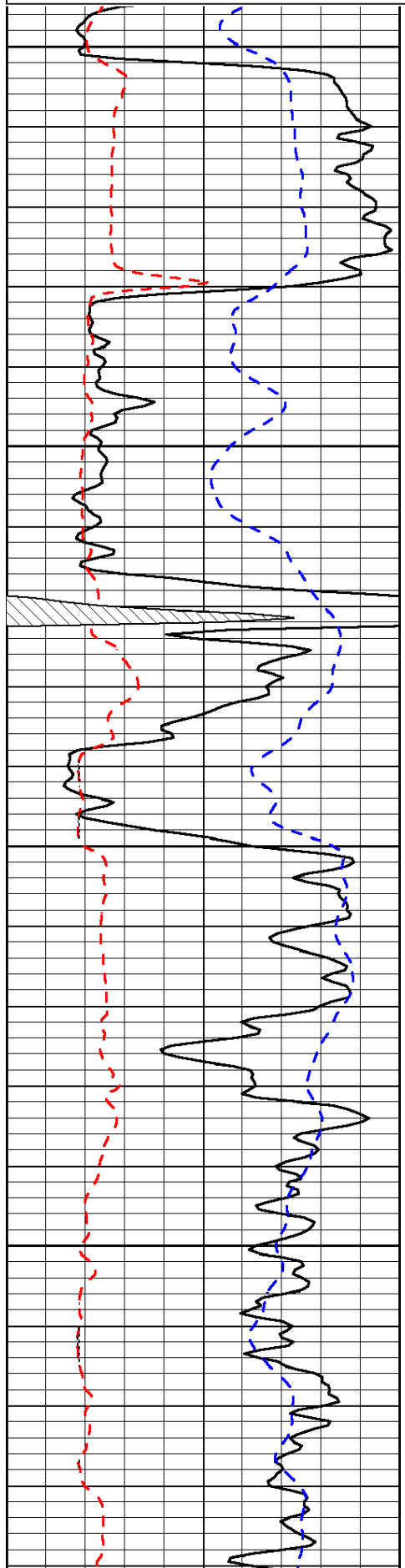
Thank you for using Log-Tech, Inc.  
 (785) 625-3858  
  
 Towanda, Kansas, 1 Mile East to SW Ohio Street,  
 1 Mile South to SW 20th, 2 Miles East to Hopkins Switch,  
 1 Mile South to SW 30th, 1/2 Mile East, South Into

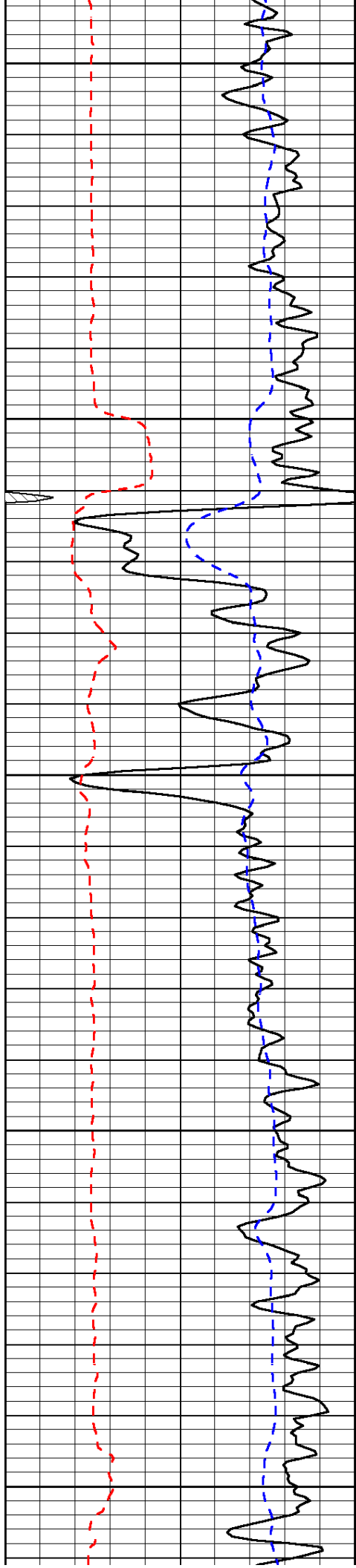
Database File: c:\warrior\data\vess\_koogler a no. 301\vess\_koogler\_301hd.db  
 Dataset Pathname: DIL/vesstk  
 Presentation Format: micro  
 Dataset Creation: Tue Apr 26 14:00:41 2011  
 Charted by: Depth in Feet scaled 1:240

0	Gamma Ray	150
6	Micro Log Caliper (GAPI)	16
-200	SP (mV)	0

0	Micro Inverse 1 X 1	40
0	Micro Normal 2"	40
15000	Line Weight	0

LSPD





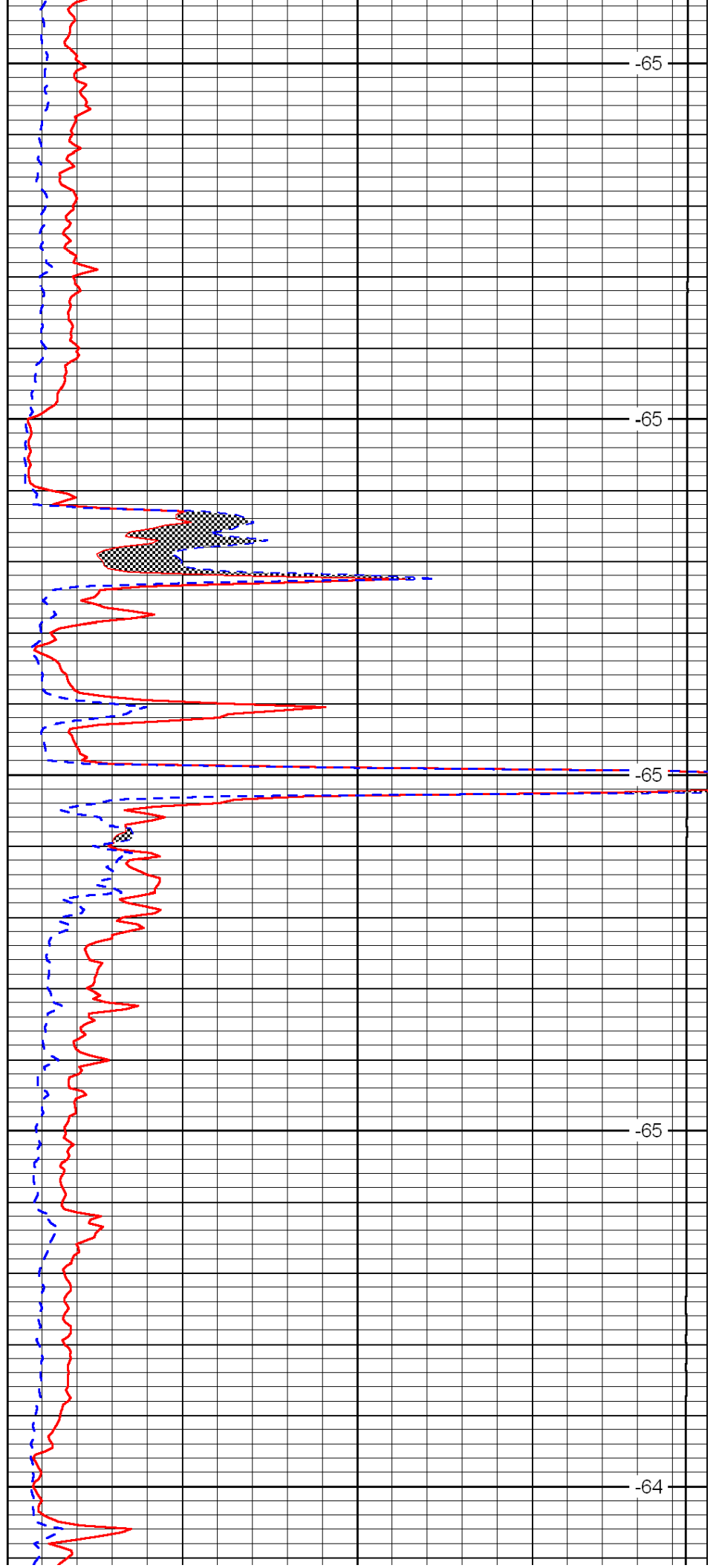
1600

1650

1700

1750

1800



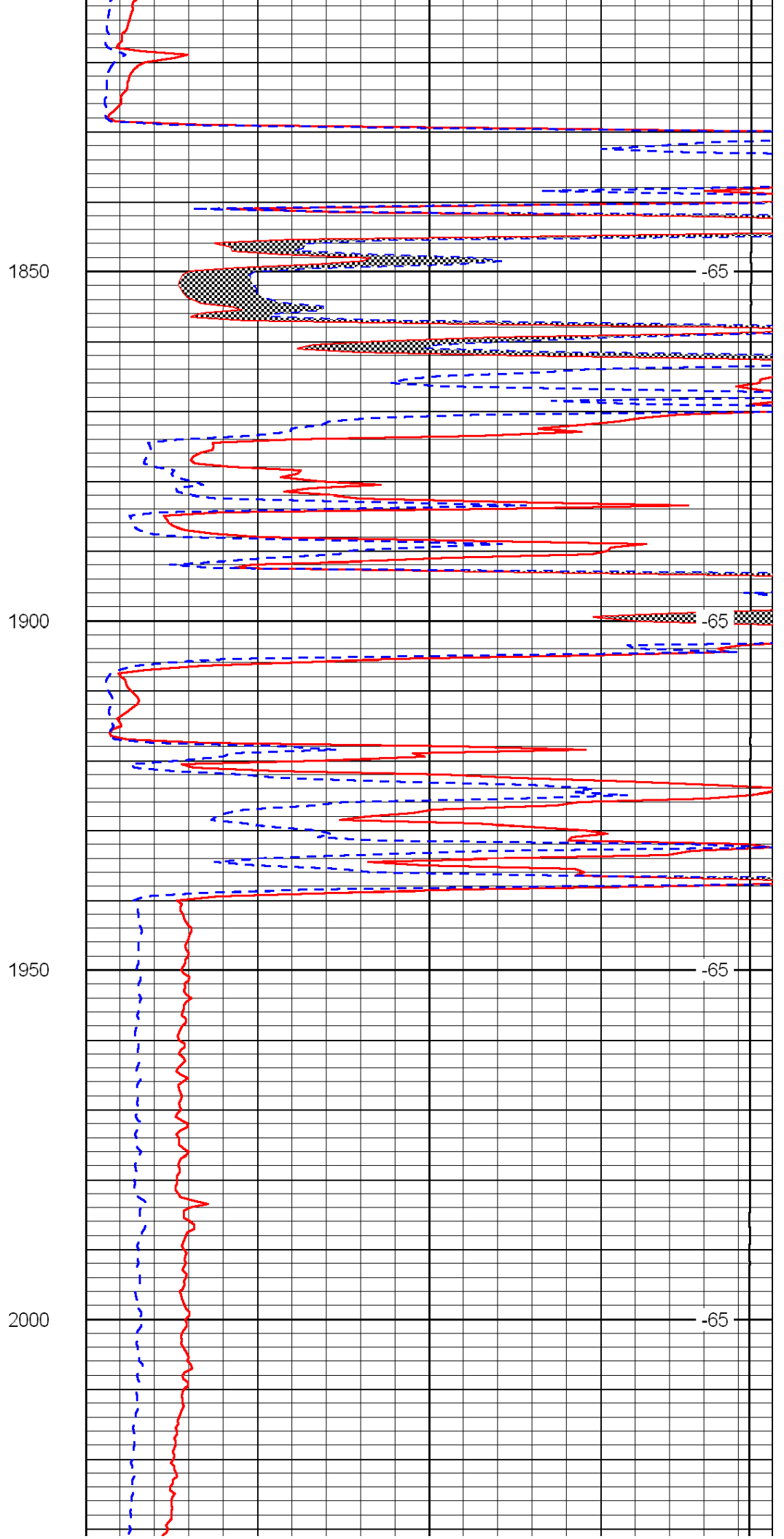
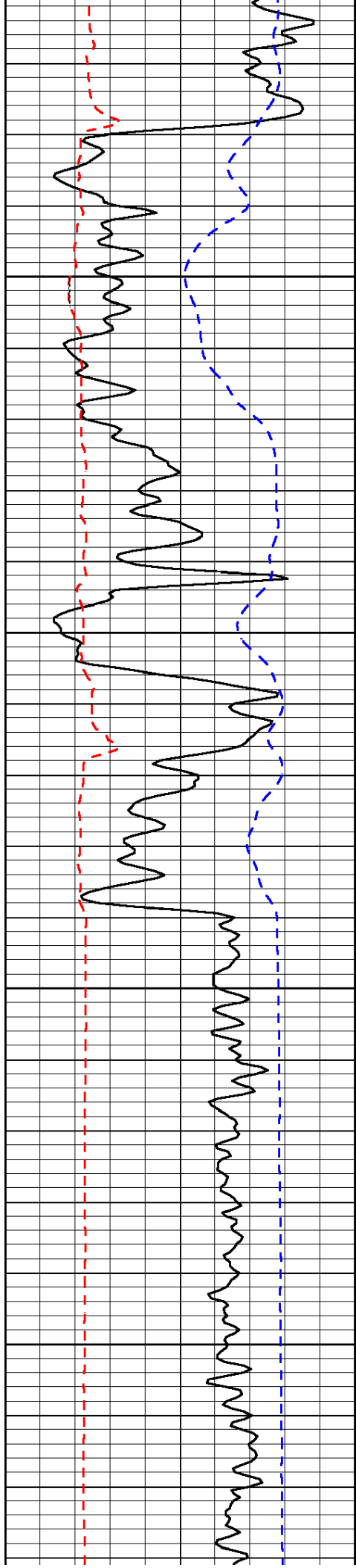
-65

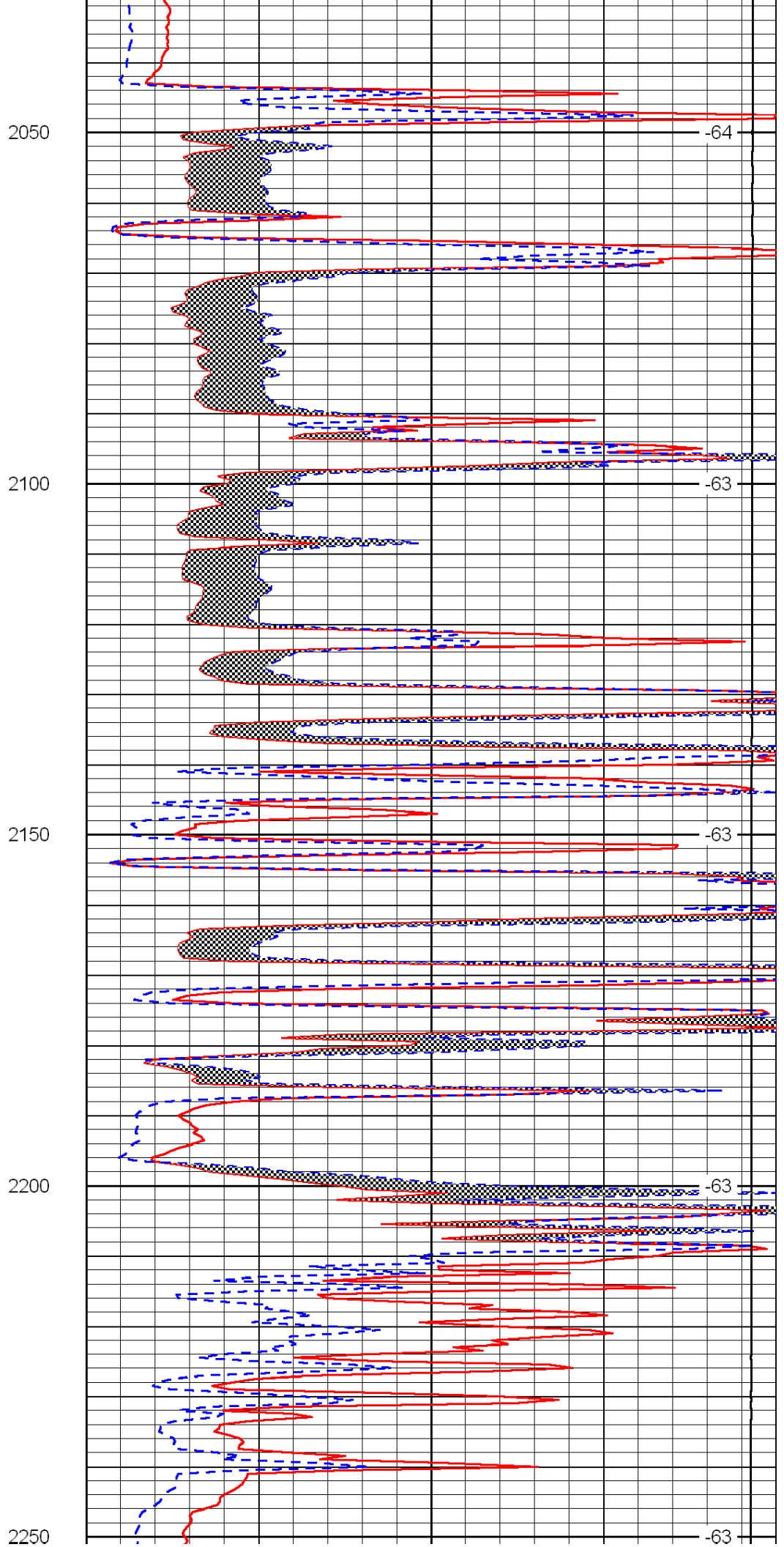
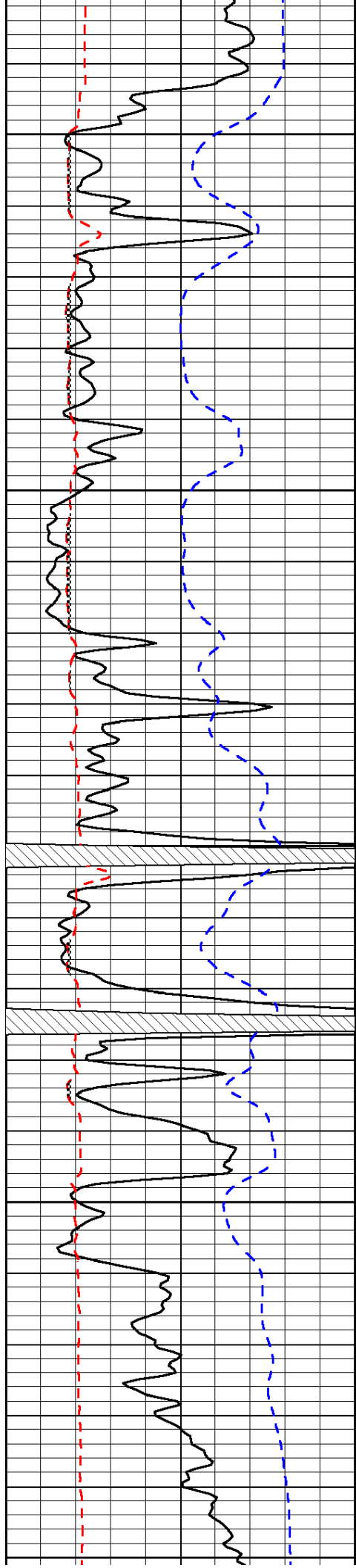
-65

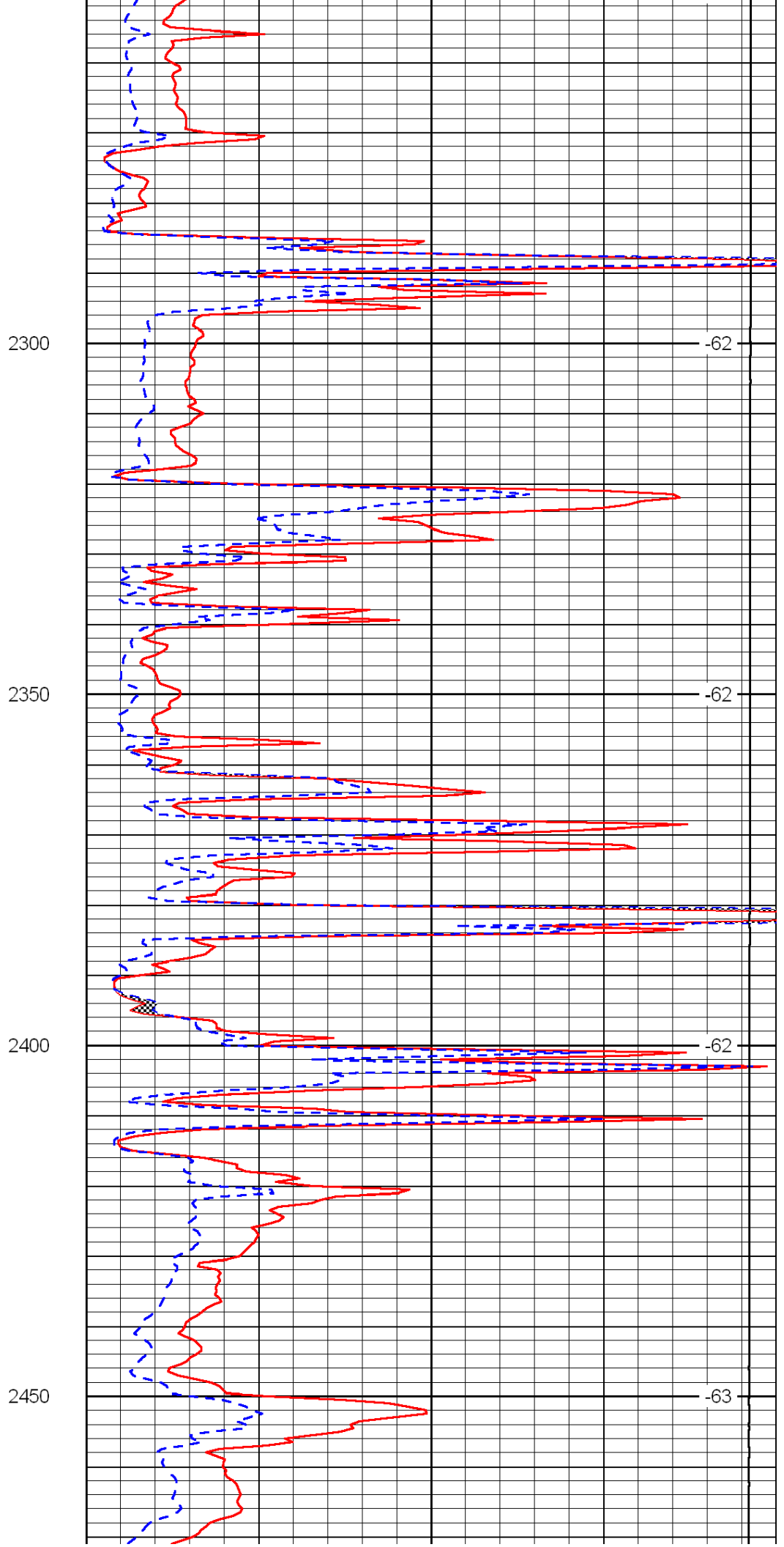
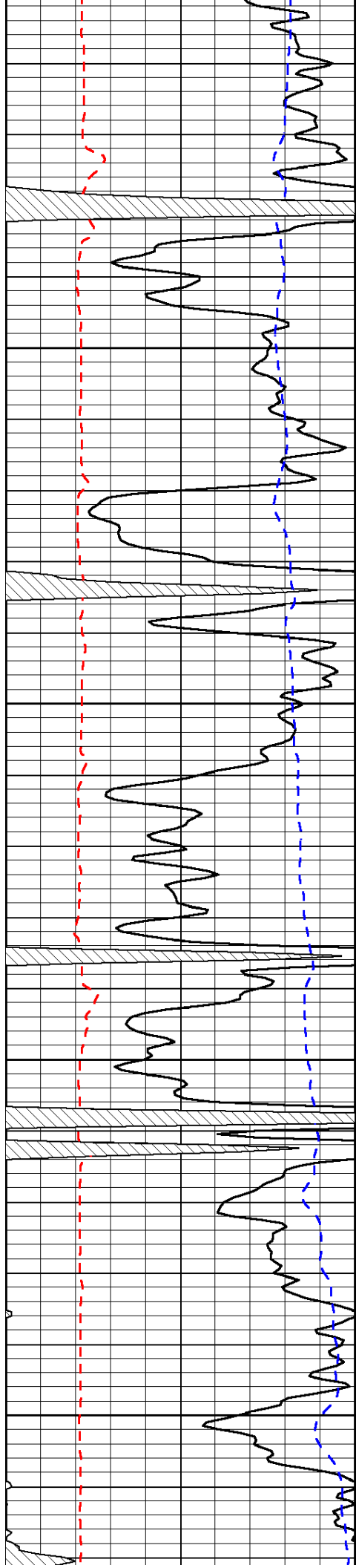
-65

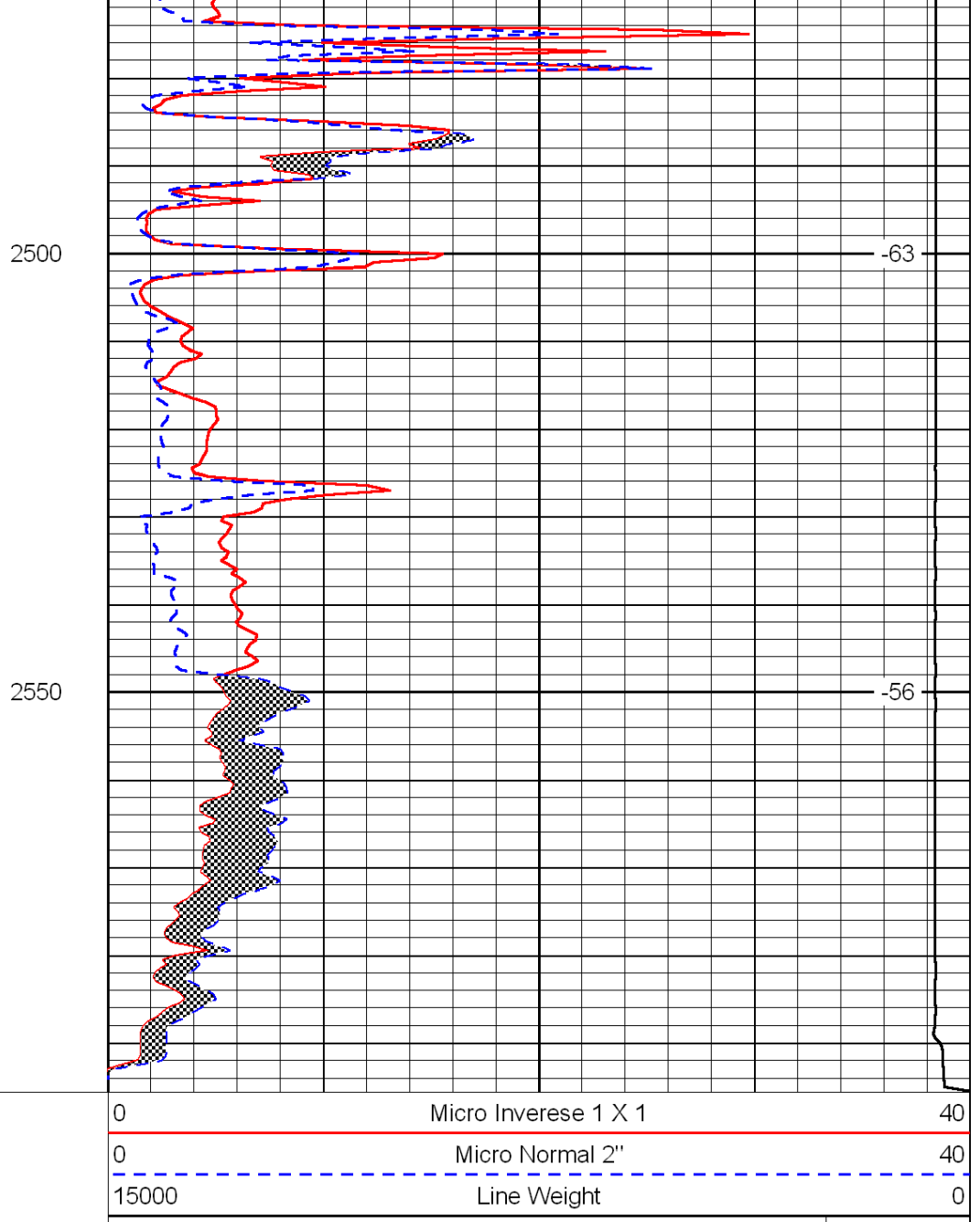
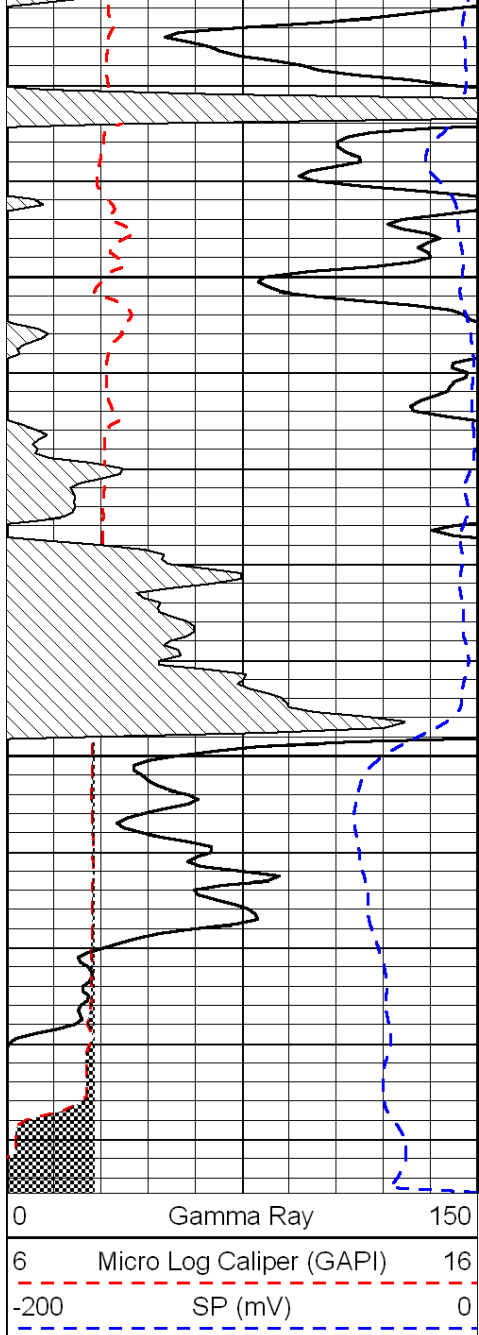
-65

-64









LSPD