



# Dual Compensated Porosity Log

DIGITAL LOG (785) 625-3858

API No. 15-015-23,891-00-00

Company **Vess Oil Corporation**  
 Well **Koogler "A" No. 301**  
 Field **El Dorado**  
 County **Butler** State **Kansas**

Location **E2 E2 NW NW  
660' FNL & 1,025' FWL**

Sec: **19** Twp: **26 S** Rge: **5 E**

Other Services  
DIL  
MEL

Permanent Datum **Ground Level** Elevation **1342**  
 Log Measured From **Kelly Bushing** **6** Ft. Above Perm. Datum  
 Drilling Measured From **Kelly Bushing**

K.B. 1348  
D.F. G.L. 1342

Date **4/26/2011**

Run Number **Two**

Type Log **CNL / CDL**

Depth Driller **2590**

Depth Logger **2590**

Bottom Logged Interval **2569**

Top Logged Interval **1400**

Type Fluid In Hole **Chemical**

Salinity, PPM CL **800**

Density **9.3**

Level **Full**

Max. Rec. Temp. F **102**

Operating Rig Time **5 Hours**

Equipment -- Location **10 Hays**

Recorded By **Jim Schuler**

Witnessed By **Roger Martin**

Borehole Record				Casing Record			
Run No.	Bit	From	To	Size	Wgt.	From	To
1	12.25	00	260	8.625	24#	00	260
2	7.875	260	2590				

<<< Fold Here >>>

All interpretations are opinions based on inferences from electrical or other measurements and we cannot and do not guarantee the accuracy or correctness of any interpretation, and we shall not, except in the case of gross or willful negligence on our part, be liable or responsible for any loss, costs, damages, or expenses incurred or sustained by anyone resulting from any interpretation made by any of our officers, agents or employees. These interpretations are also subject to our general terms and conditions set out in our current Price Schedule.

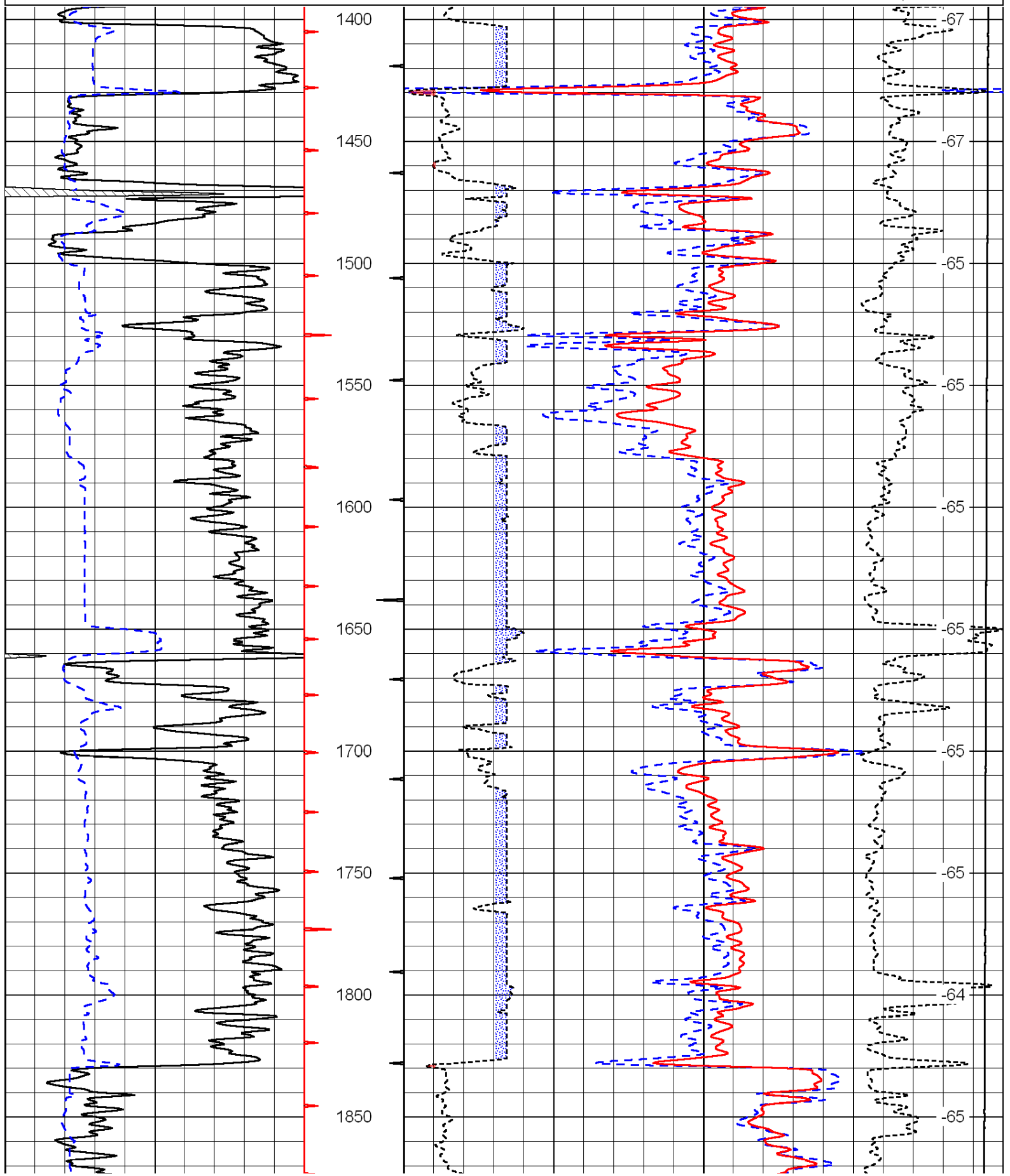
Comments

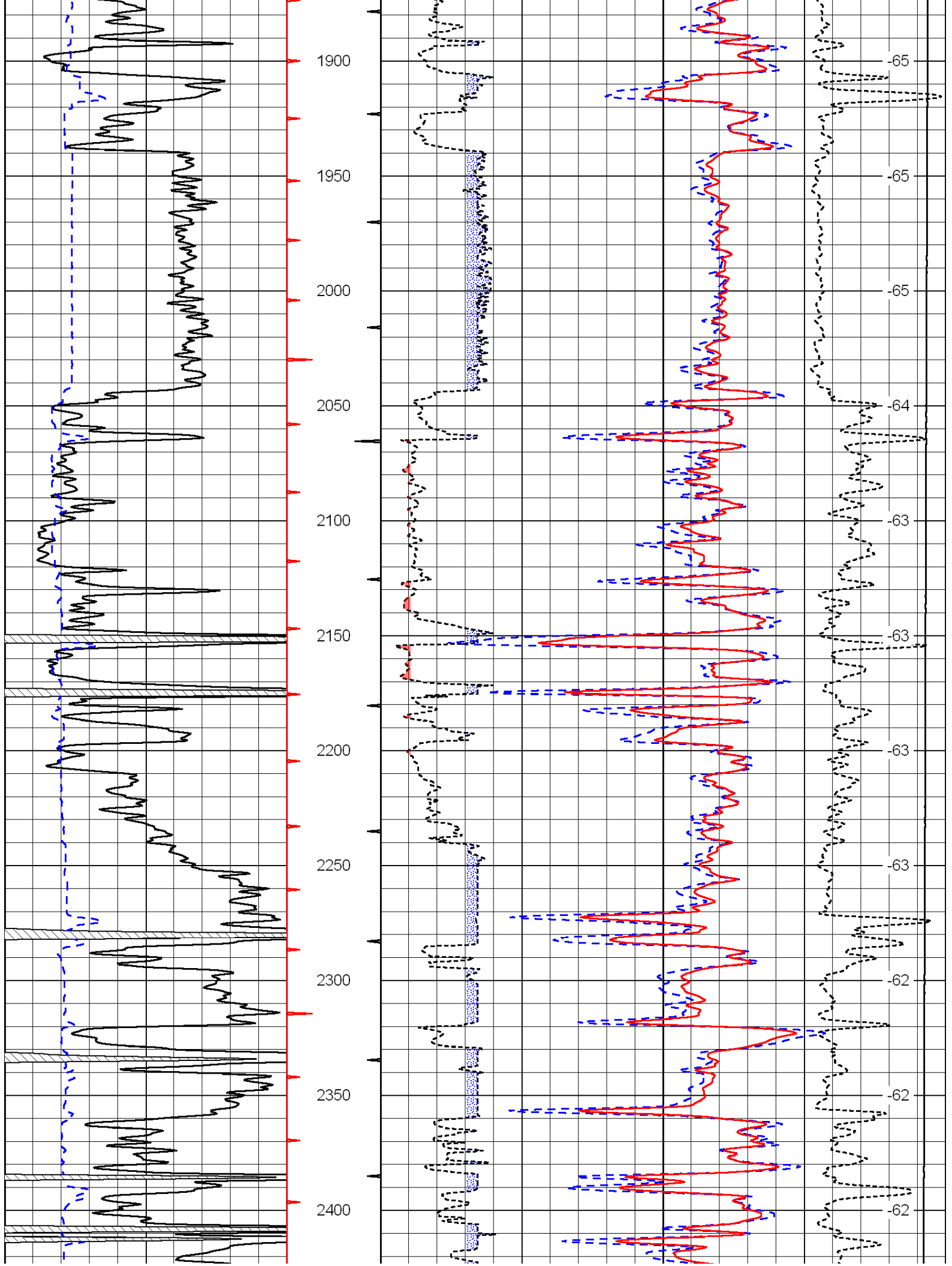
Thank you for using Log-Tech, Inc.  
 (785) 625-3858

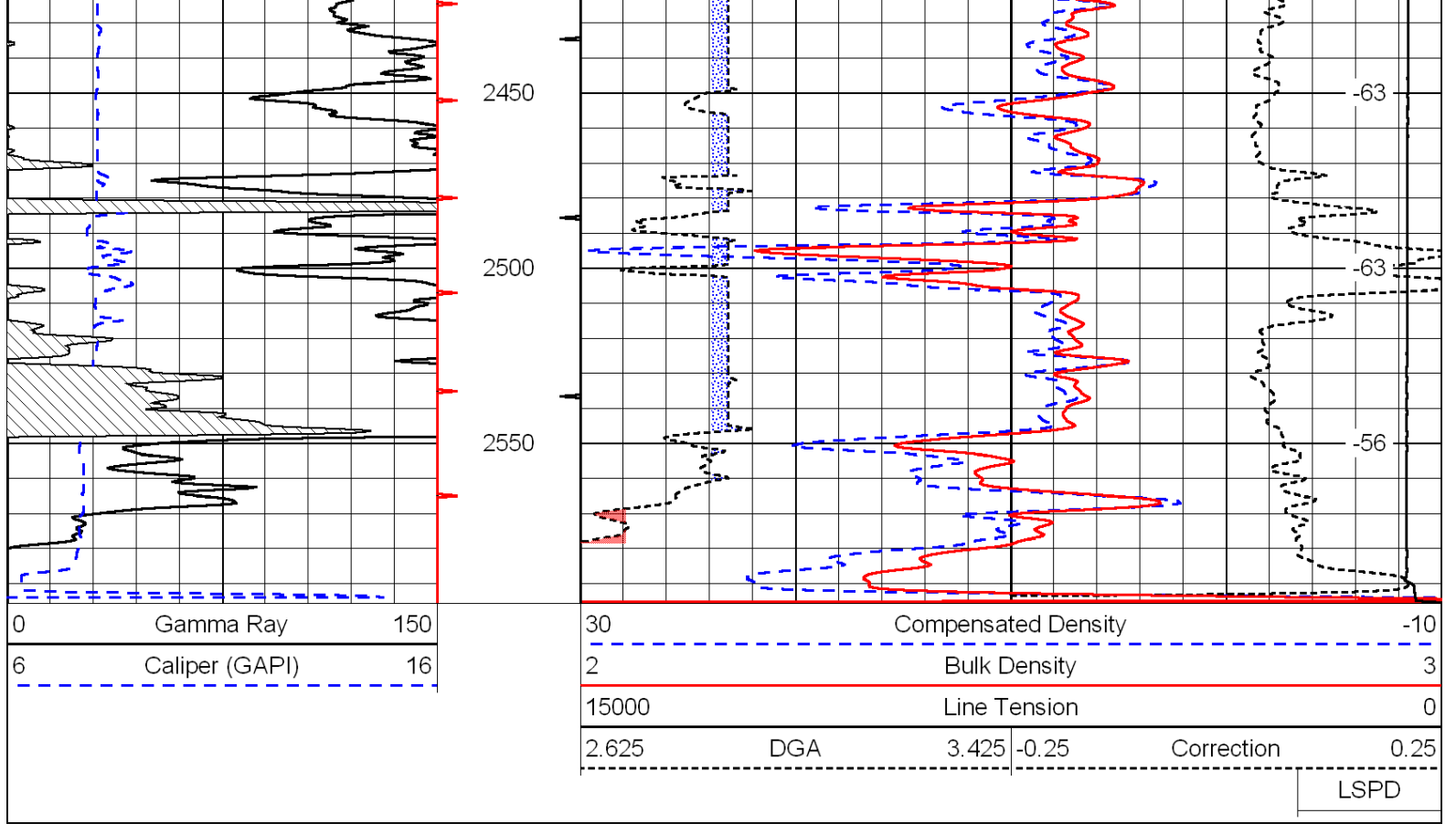
Towanda, Kansas, 1 Mile East to SW Ohio Street,  
 1 Mile South to SW 20th, 2 Miles East to Hopkins Switch,  
 1 Mile South to SW 30th, 1/2 Mile East, South Into

0	Gamma Ray	150
6	Caliper (GAPI)	16

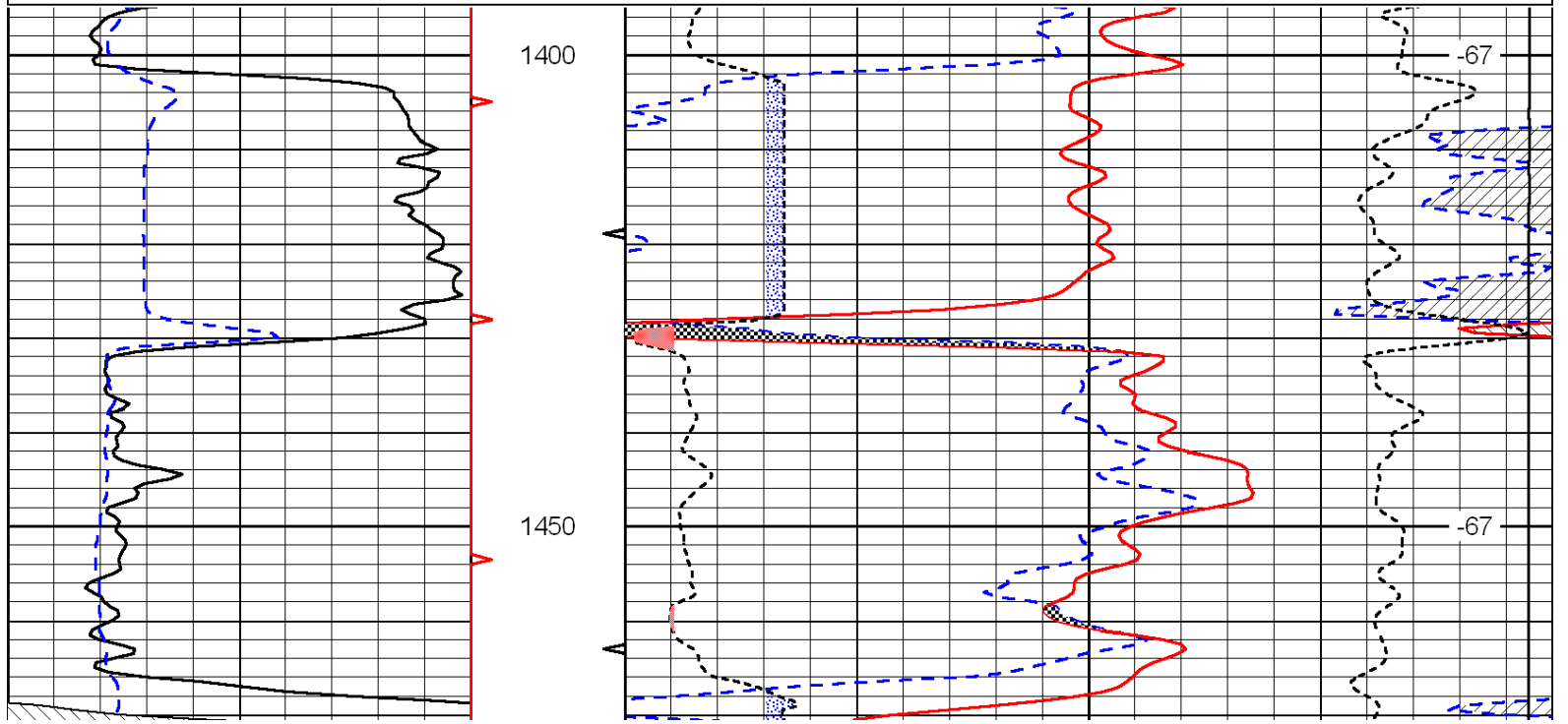
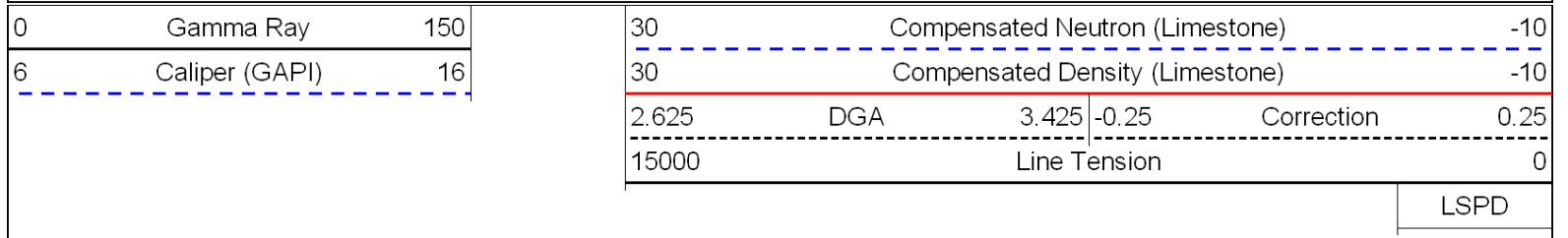
30	Compensated Density		-10
2	Bulk Density		3
15000	Line Tension		0
2.625	DGA	3.425	-0.25
			Correction
			0.25
LSPD			

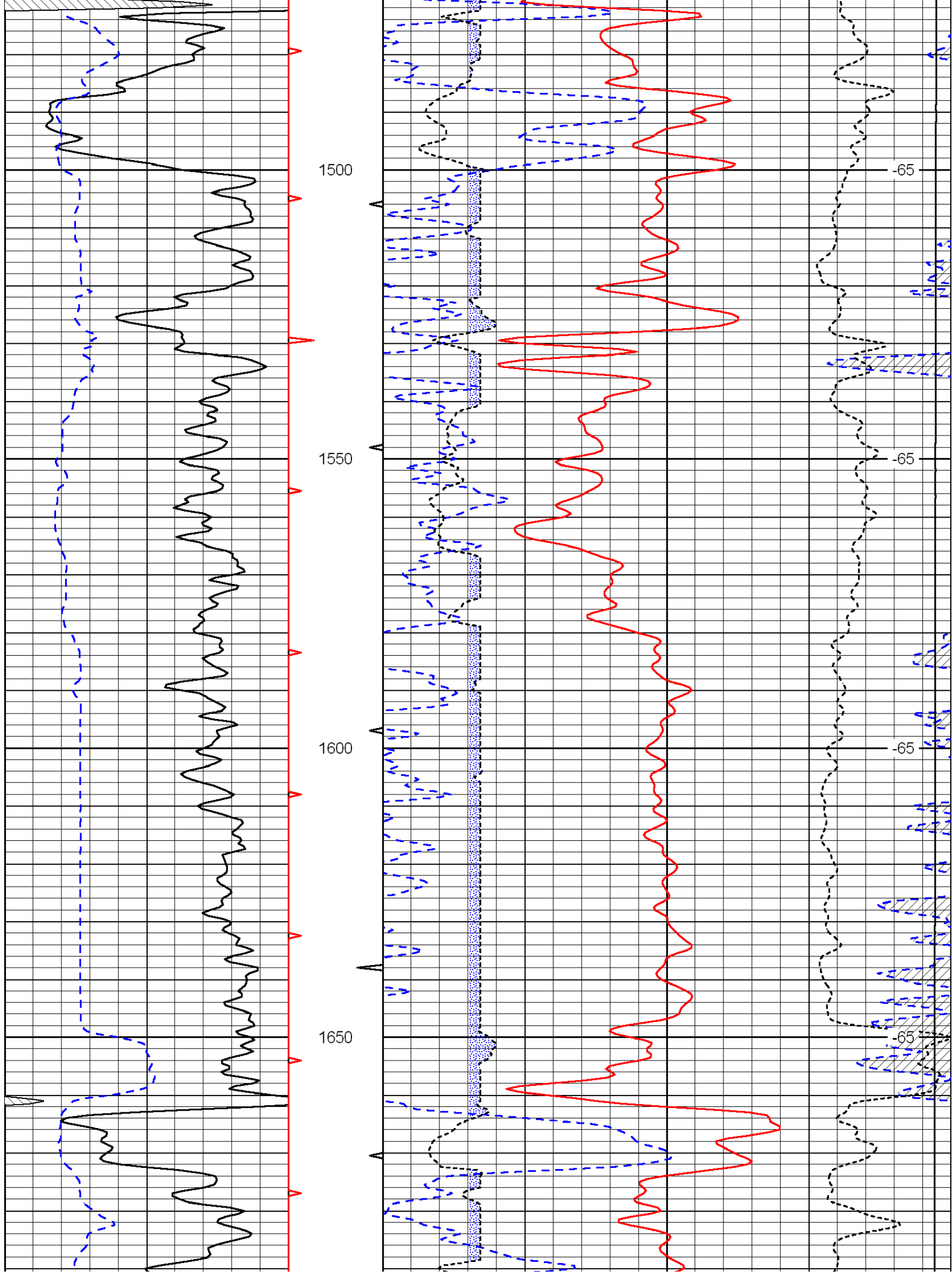


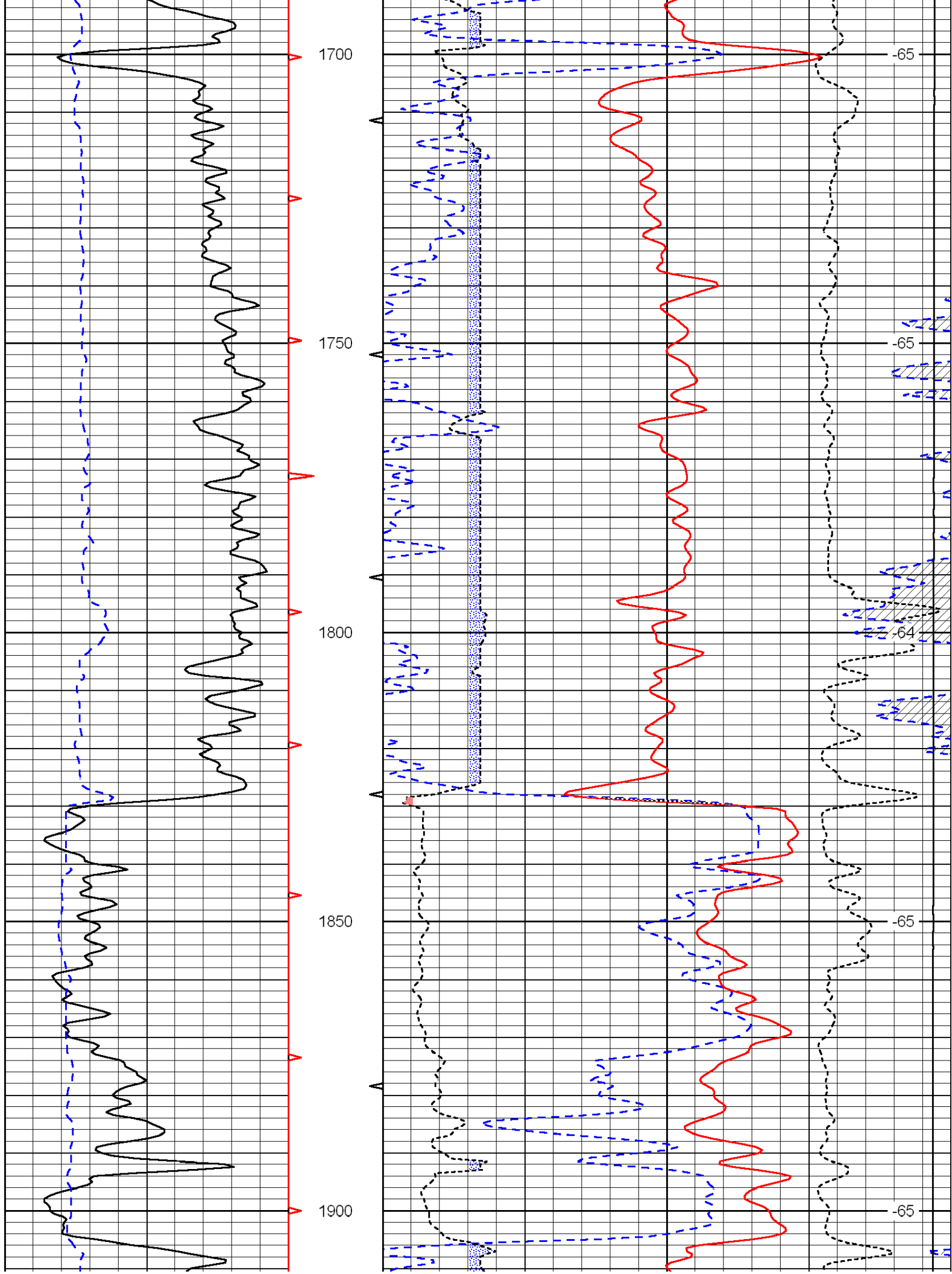


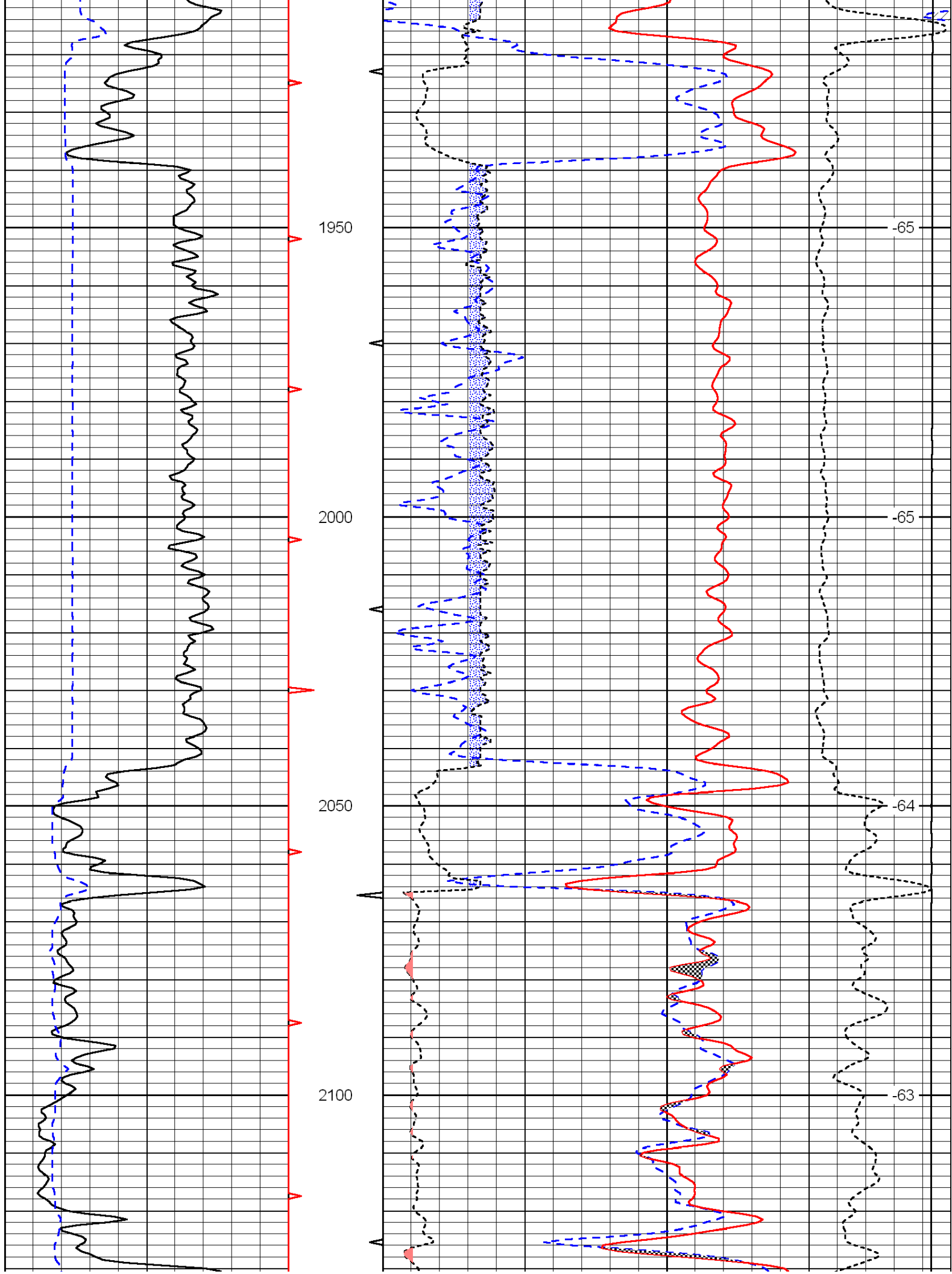


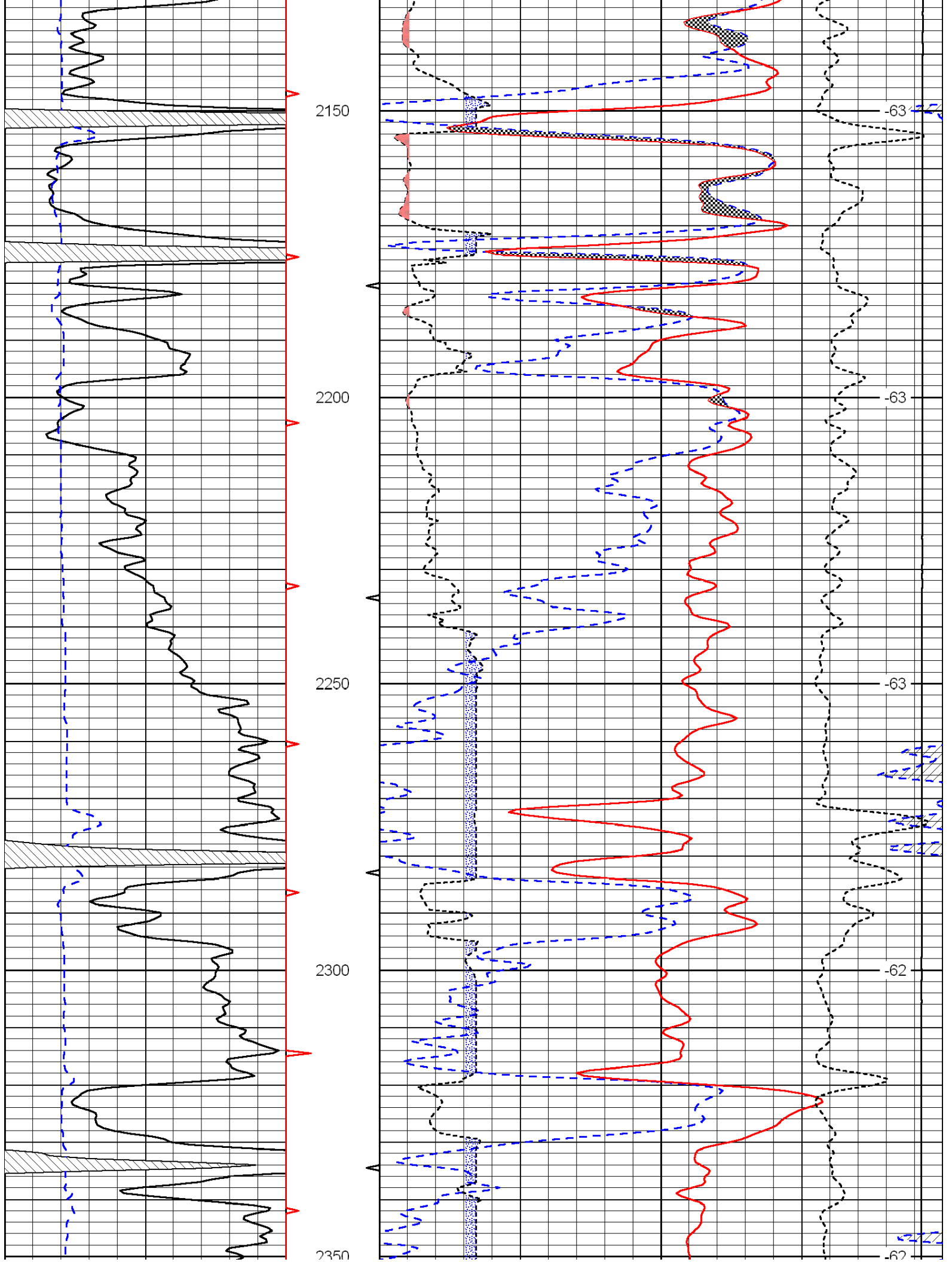
Database File: c:\warrior\data\ vess\_koogler a no. 301\ vess\_koogler\_301hd.db  
 Dataset Pathname: DIL\vesstk  
 Presentation Format: cndlspec  
 Dataset Creation: Tue Apr 26 14:00:41 2011  
 Charted by: Depth in Feet scaled 1:240



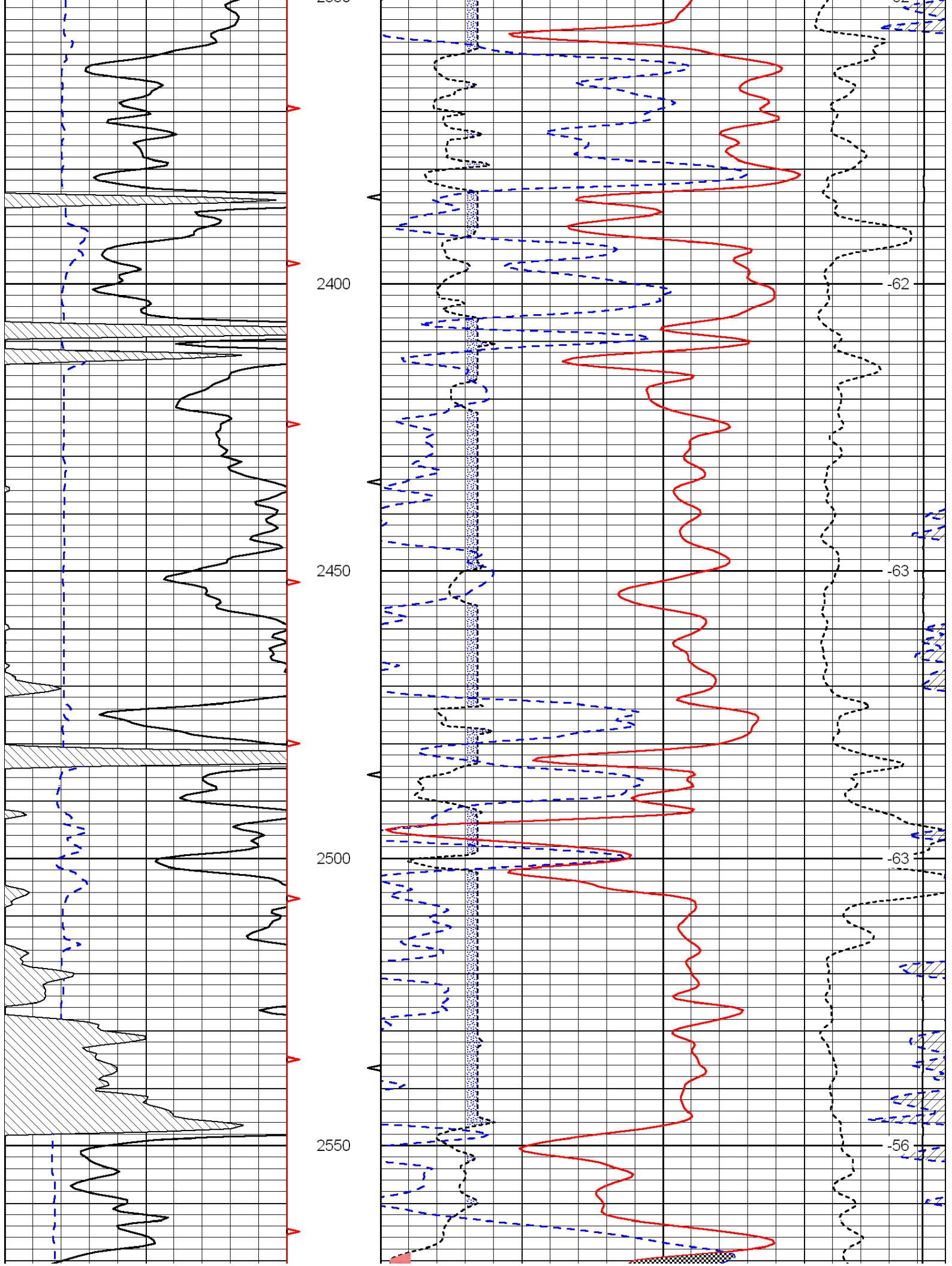


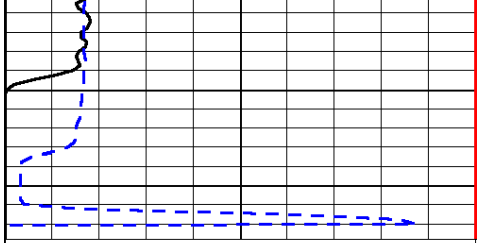




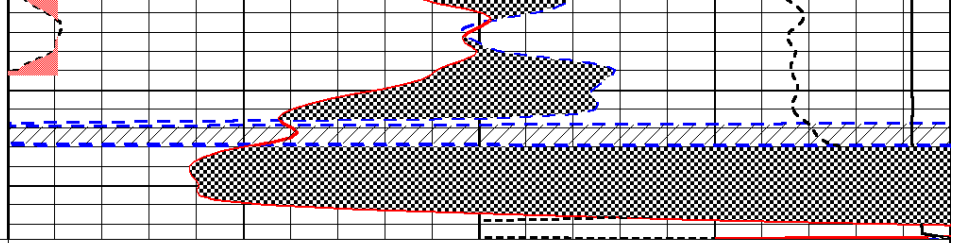








0	Gamma Ray	150
6	Caliper (GAPI)	16



30	Compensated Neutron (Limestone)	-10			
30	Compensated Density (Limestone)	-10			
2.625	DGA	3.425	-0.25	Correction	0.25
15000	Line Tension		0		

LSPD