



DIGITAL LOG (785) 625-3858

Dual Induction Log

API No.	15-015-23,891-00-00	
Company	Vess Oil Corporation	
Well	Koogler "A" No. 301	
Field	El Dorado	
County	Butler	State Kansas
Location	E2 E2 NW/NW 660' FNL & 1,025' FWL	
Other Services	CNL/CDL MEL	
Sec: 19	Twp: 26 S	Rge: 5 E

Permanent Datum	Ground Level	Elevation 1342
Log Measured From	Kelly Bushing	6 Ft. Above Perm. Datum
Drilling Measured From	Kelly Bushing	Elevation 1348
		D.F. 1342
		G.L. 1342

Date	4/26/2011
Run Number	One
Depth Driller	2590
Depth Logger	2590
Bottom Logged Interval	2589
Top Log Interval	250
Casing Driller	8.625 @ 260
Casing Logger	268
Bit Size	8.625
Type Fluid in Hole	Chemical
Salinity, ppm CL	800
Density / Viscosity	9.3 51
pH / Fluid Loss	9.0 9.6
Source of Sample	Flowline
Rm @ Meas. Temp	1.70 @ 62
Rmf @ Meas. Temp	1.28 @ 62
Rmc @ Meas. Temp	2.30 @ 62
Source of Rmf / Rmc	Charts
Rm @ BHT	1.03 @ 102
Operating Rig Time	5 Hours
Max Rec. Temp. F	102
Equipment Number	10
Location	Hays
Recorded By	Jim Schuler
Witnessed By	Roger Martin

<<< Fold Here >>>

All interpretations are opinions based on inferences from electrical or other measurements and we cannot and do not guarantee the accuracy or correctness of any interpretation, and we shall not, except in the case of gross or willful negligence on our part, be liable or responsible for any loss, costs, damages, or expenses incurred or sustained by anyone resulting from any interpretation made by any of our officers, agents or employees. These interpretations are also subject to our general terms and conditions set out in our current Price Schedule.

Comments

Thank you for using Log-Tech, Inc.
(785) 625-3858

Towanda, Kansas, 1 Mile East to SW Ohio Street,
1 Mile South to SW 20th, 2 Miles East to Hopkins Switch,
1 Mile South to SW 30th, 1/2 Mile East, South Into

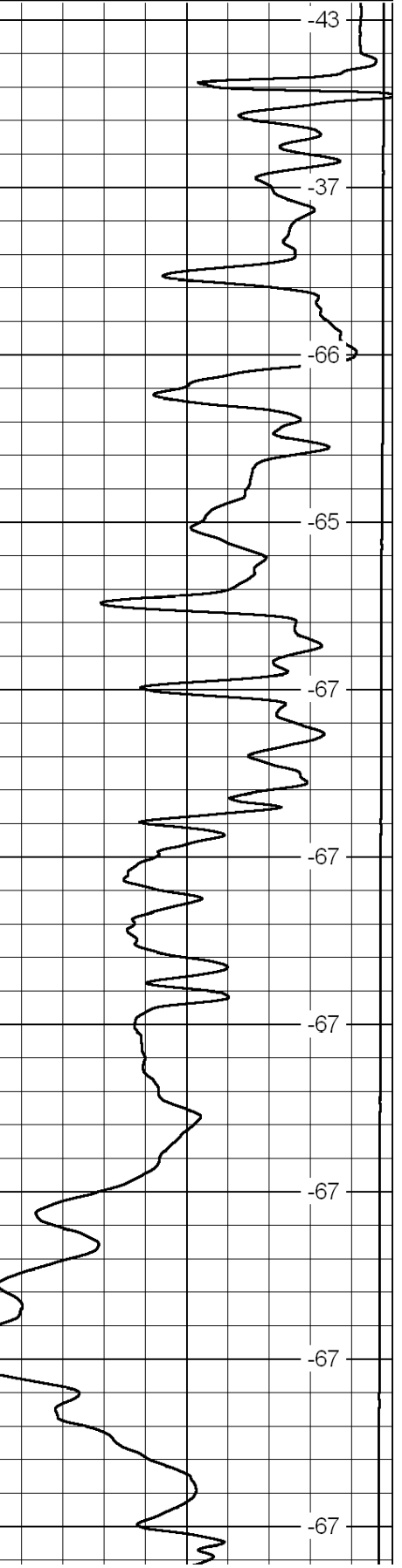
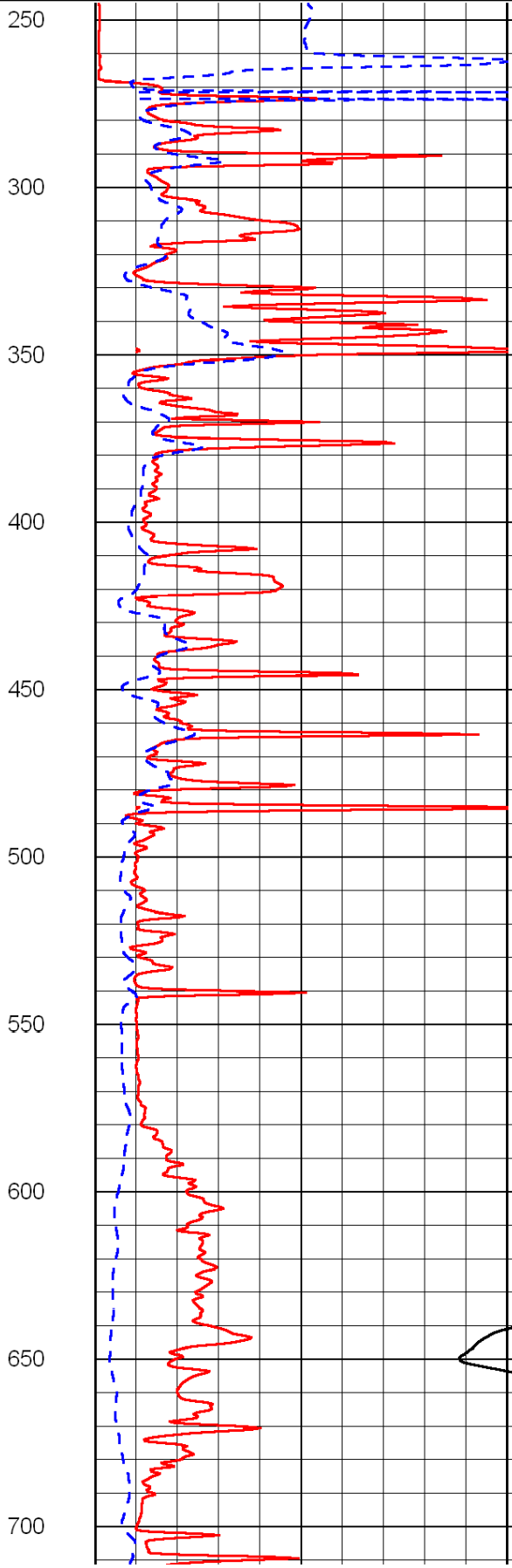
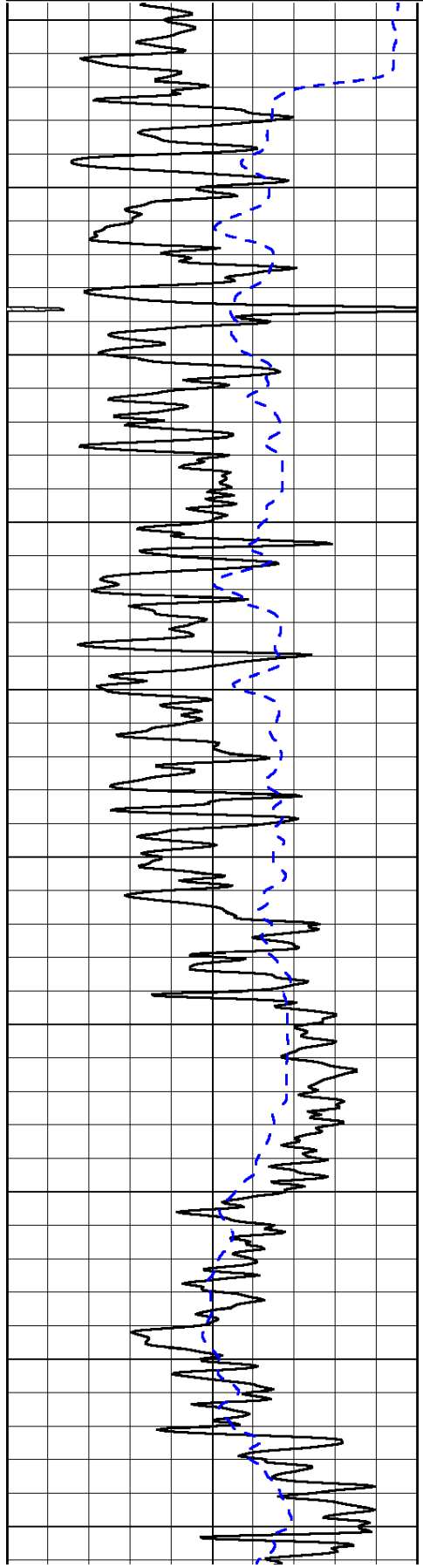
0	Gamma Ray	150
-200	SP (mV)	0

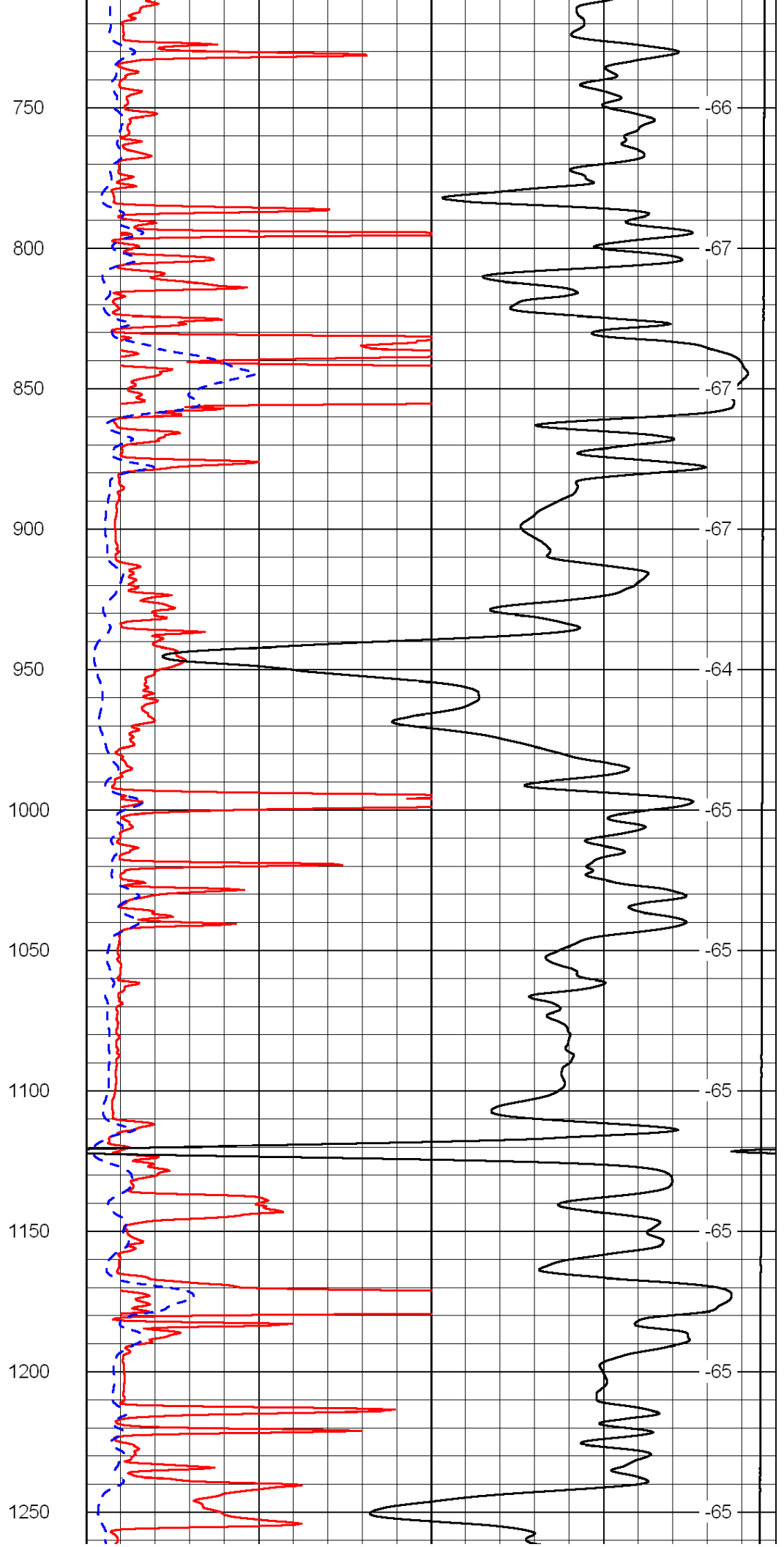
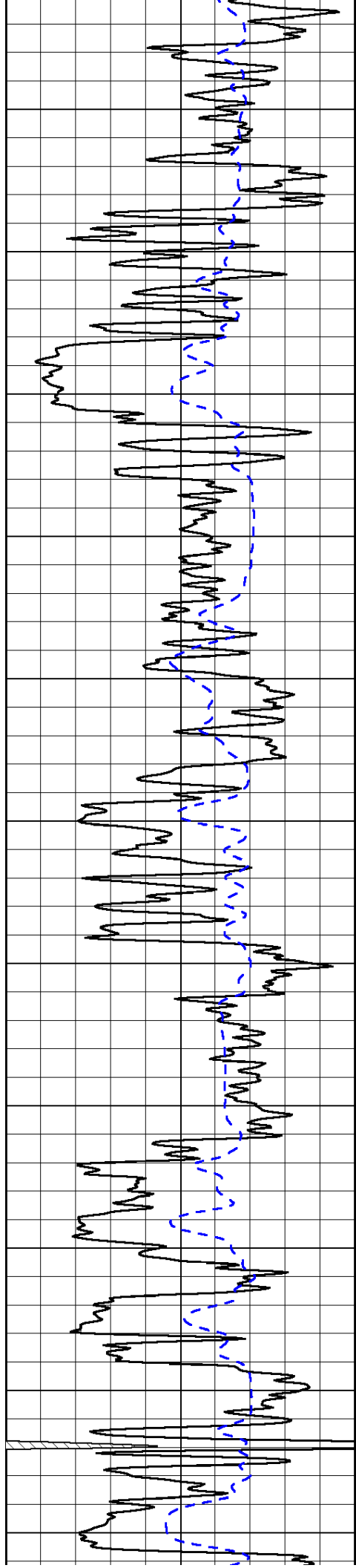
0	Shallow Resistivity	50
0	Deep Resistivity	50

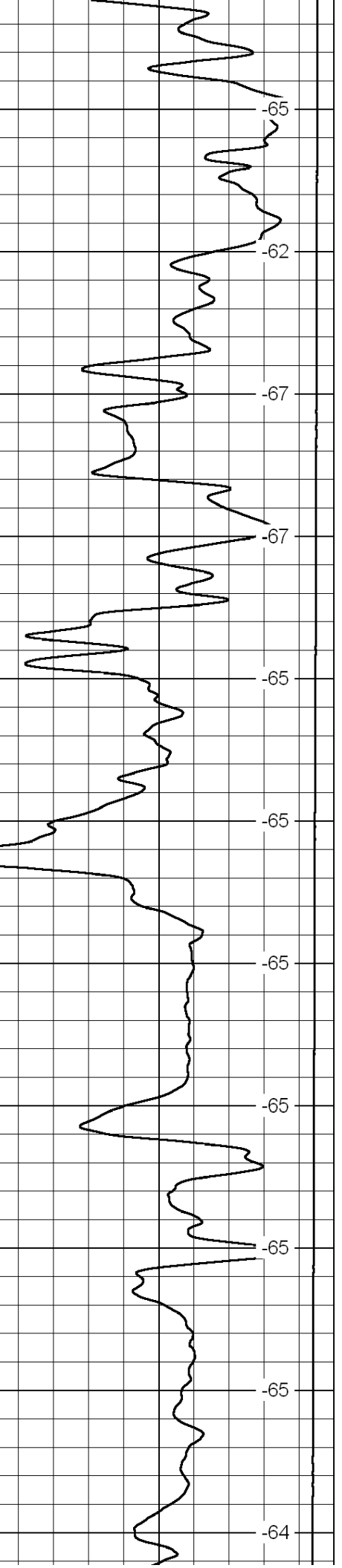
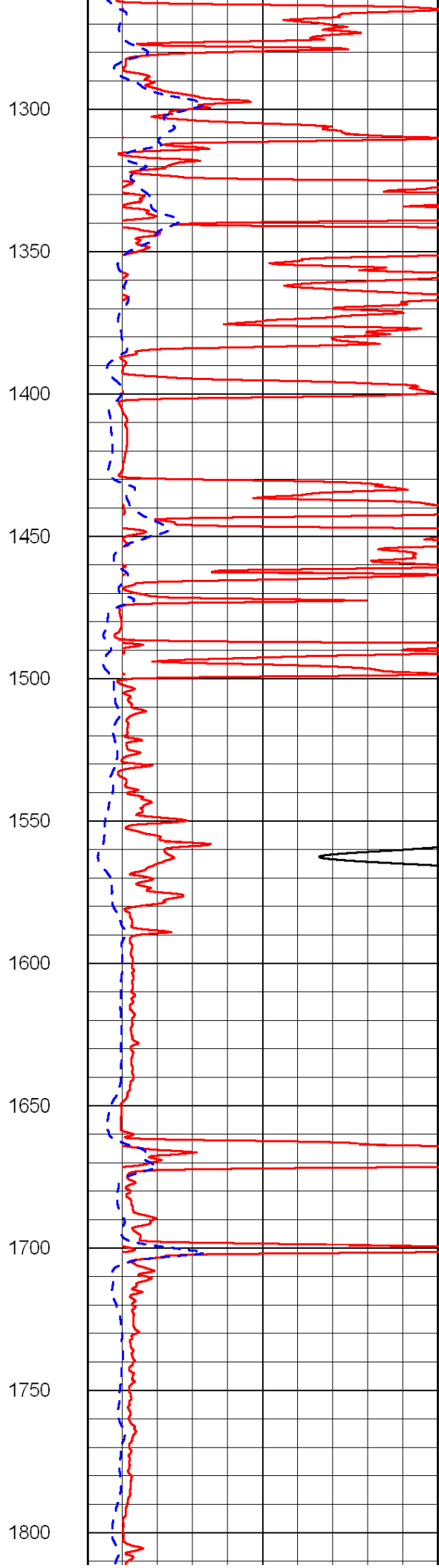
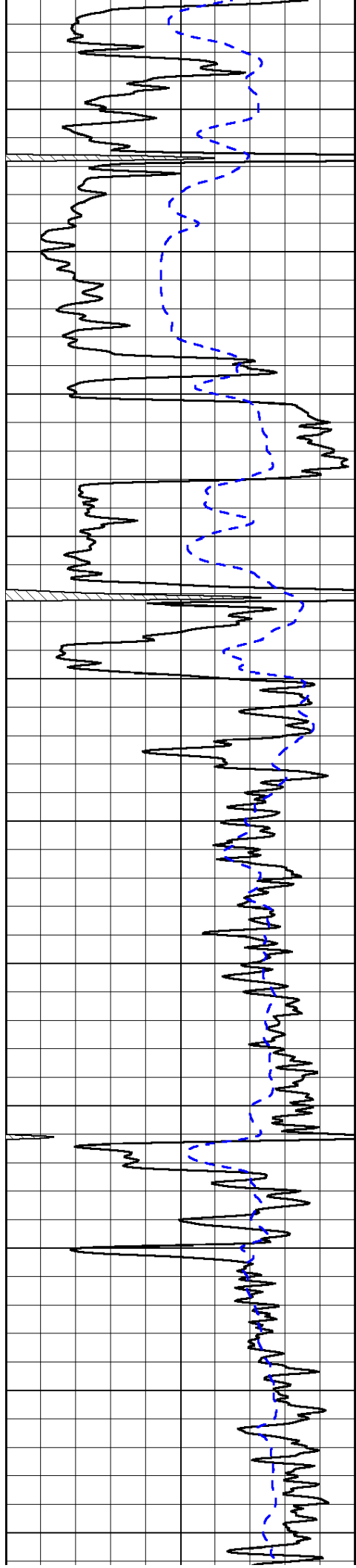
LSPD

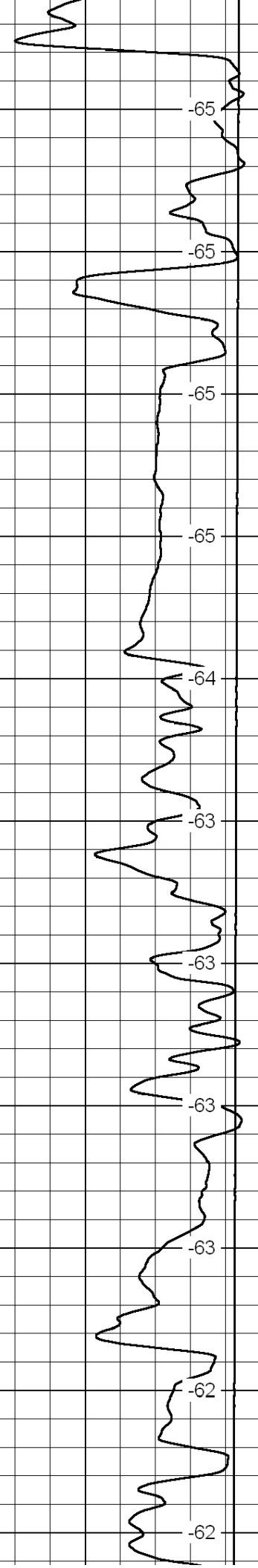
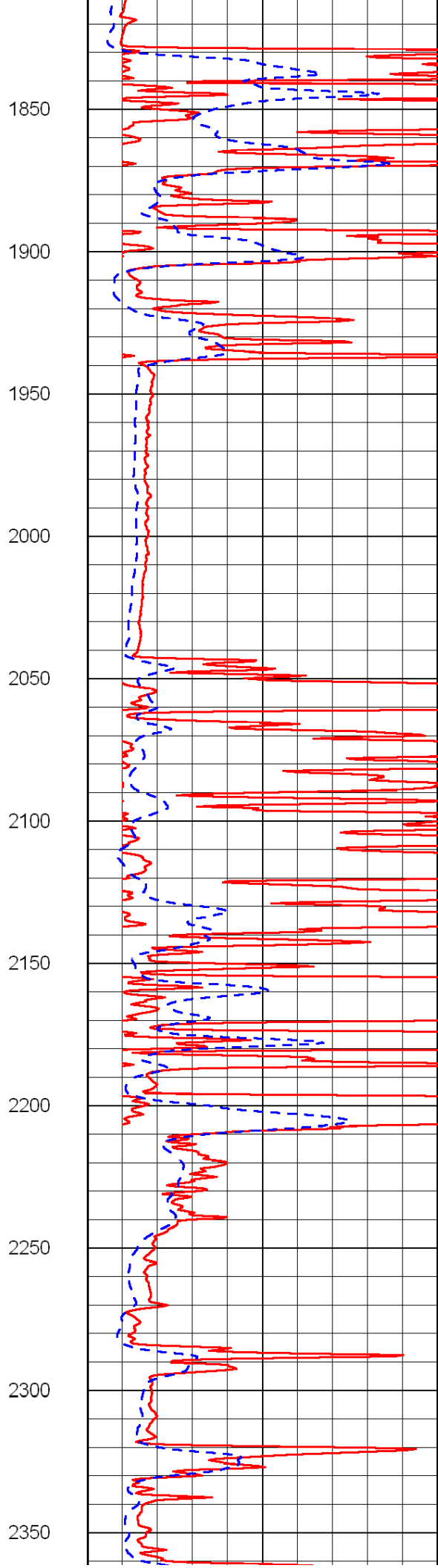
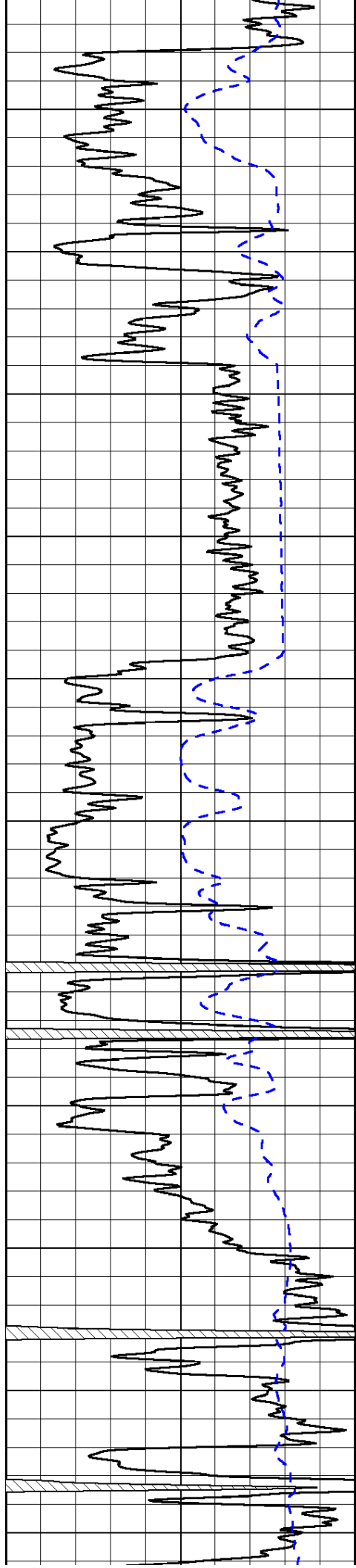
1000	Conductivity	0
15000	Line Tension	0

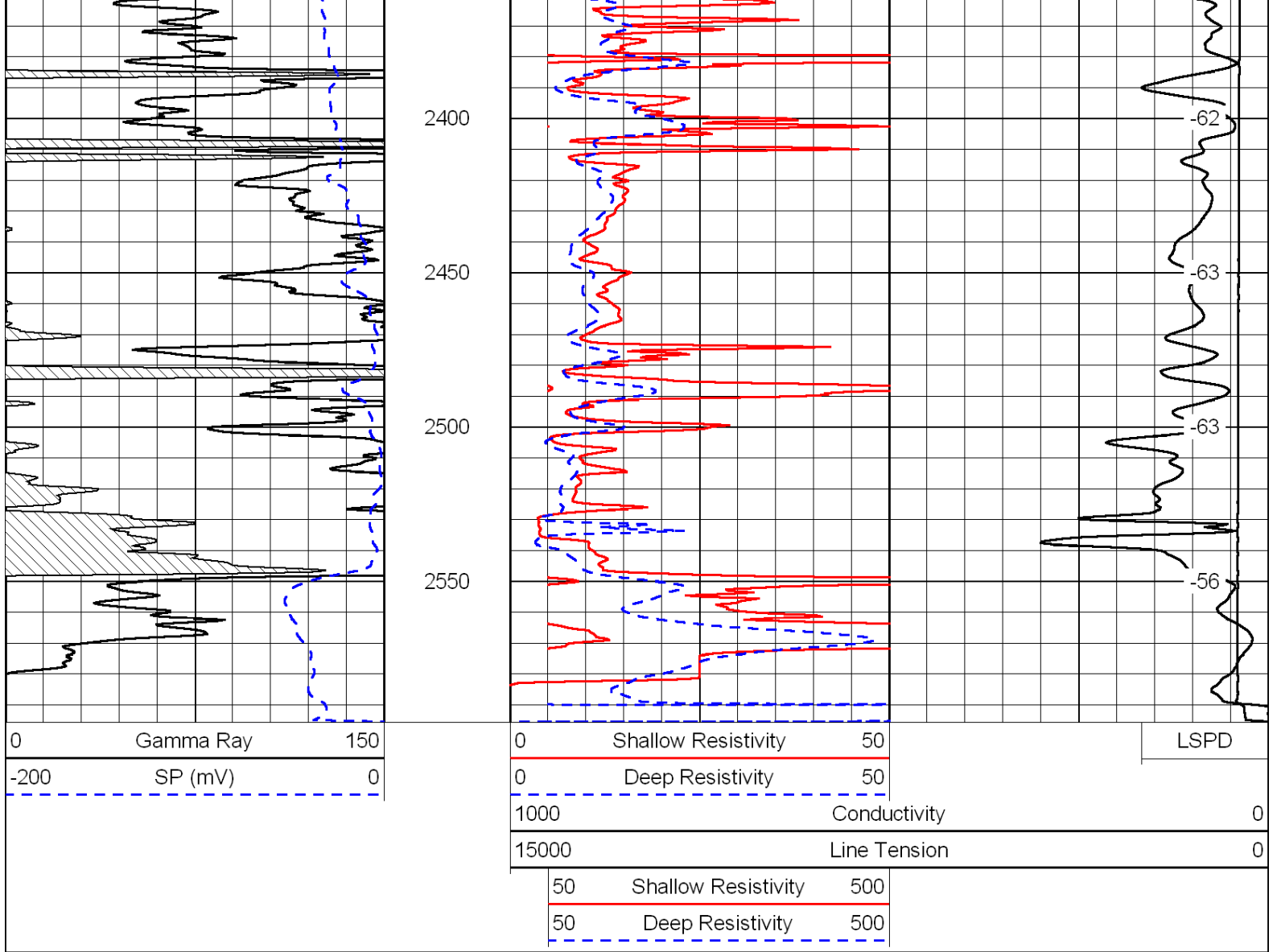
50	Shallow Resistivity	500
50	Deep Resistivity	500



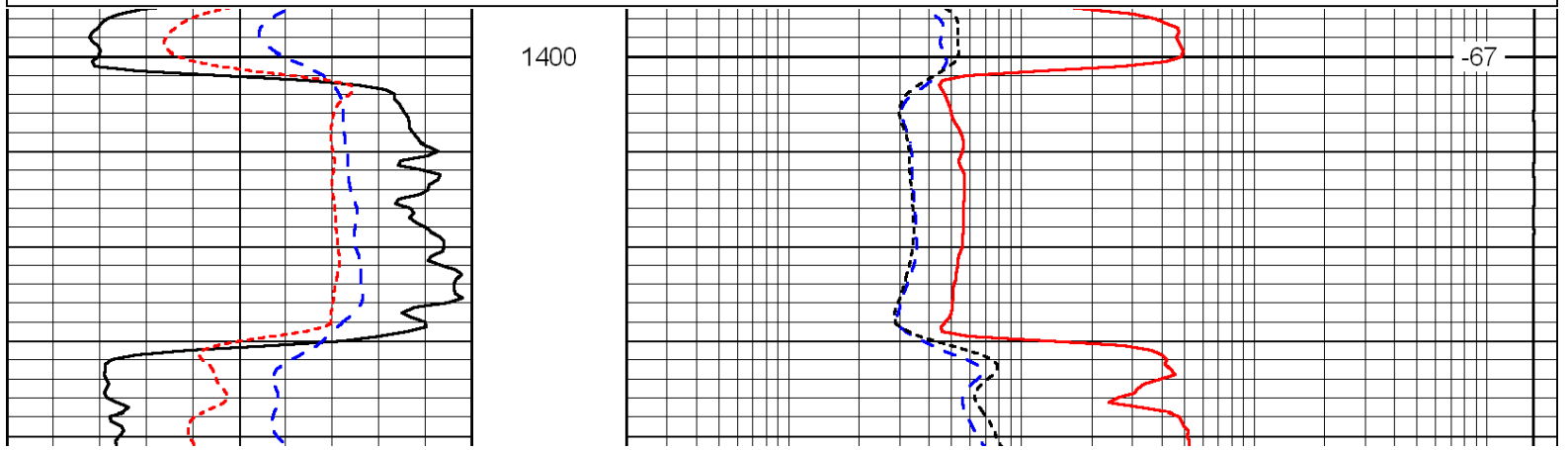
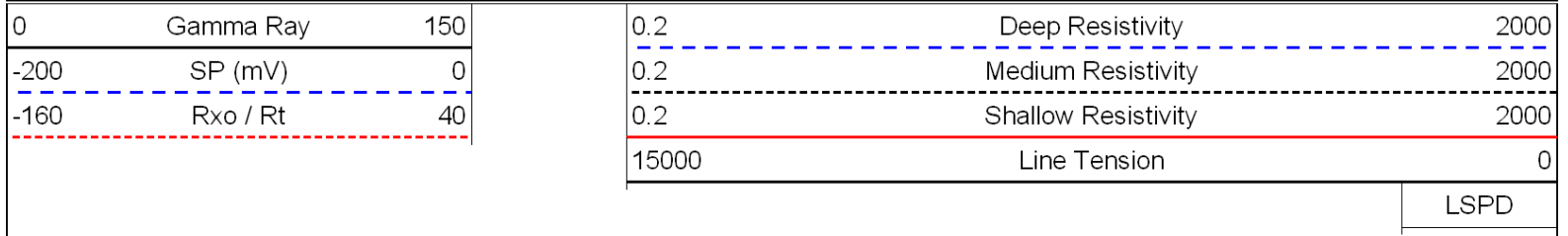


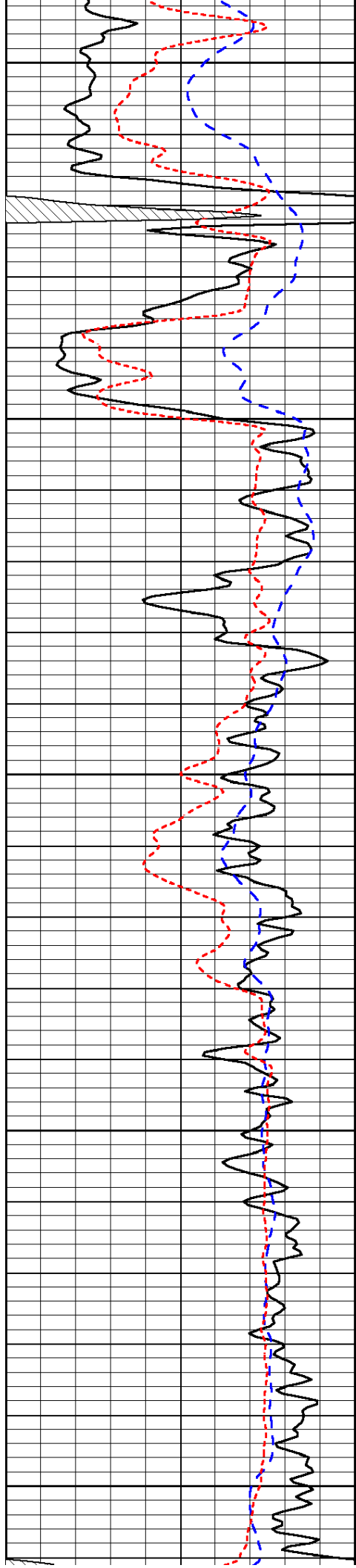






Database File: c:\warrior\data\vess_koogler a no. 301\vess_koogler_301hd.db
 Dataset Pathname: DIL/vesstk
 Presentation Format: dil
 Dataset Creation: Tue Apr 26 14:00:41 2011
 Charted by: Depth in Feet scaled 1:240





1450

1500

1550

1600

1650

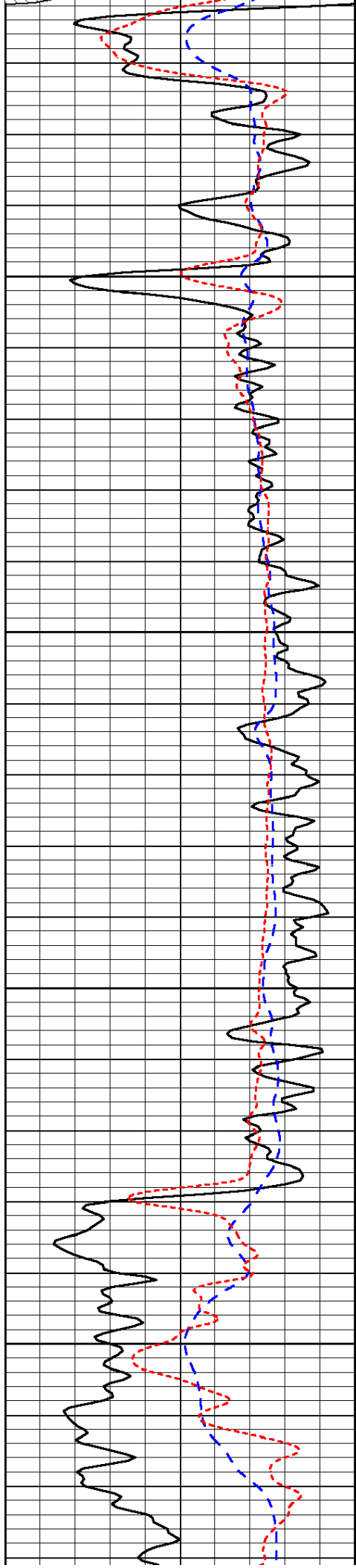
-67

-65

-65

-65

-65

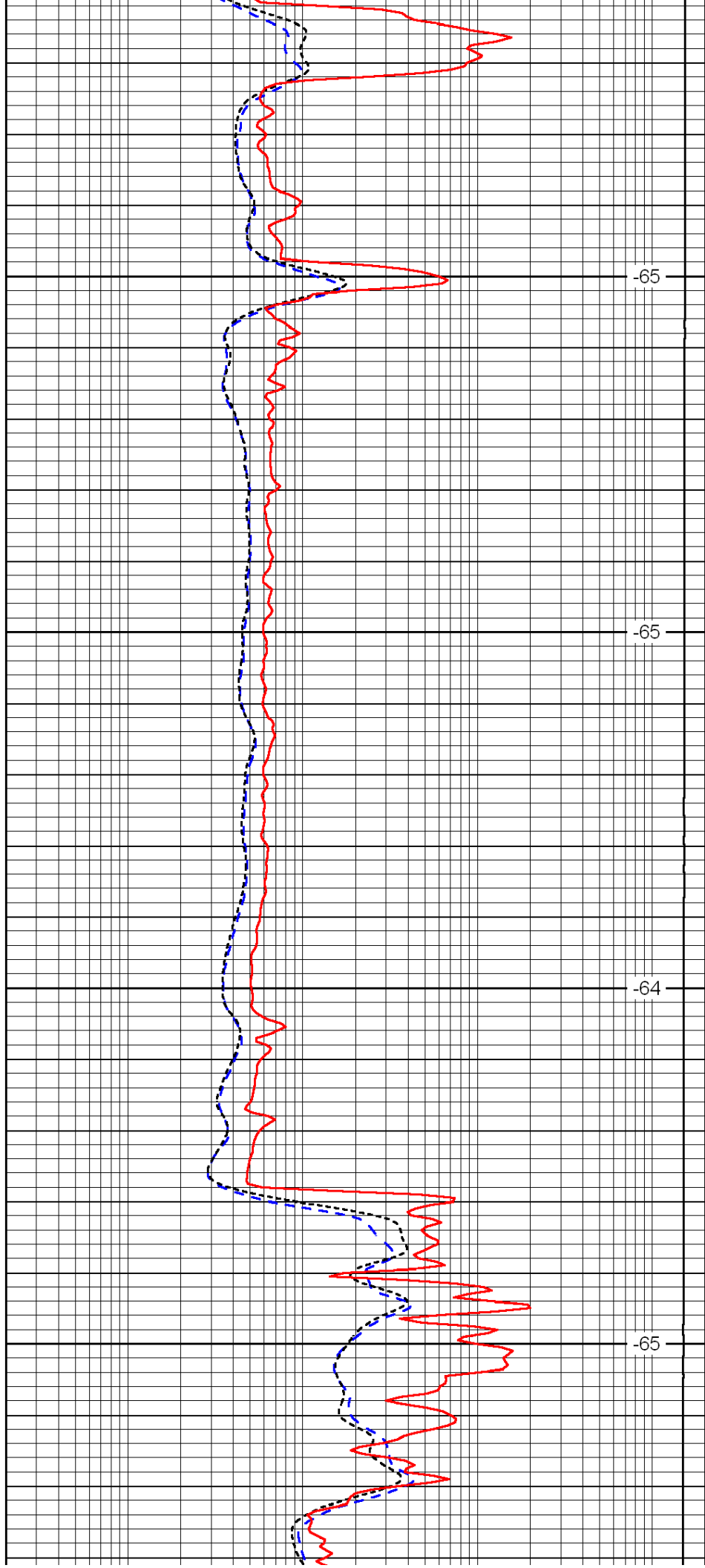


1700

1750

1800

1850

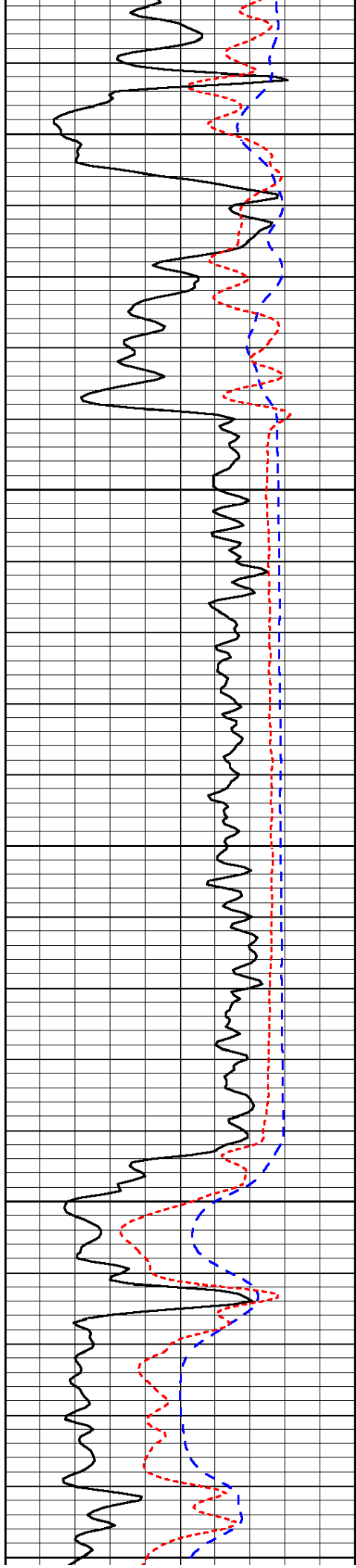


-65

-65

-64

-65



1900

-65

1950

-65

2000

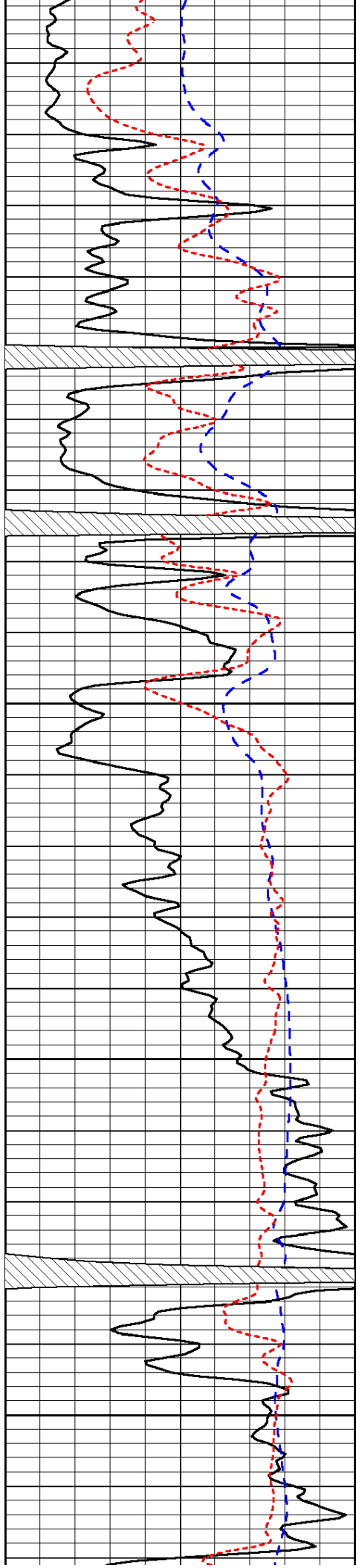
-65

2050

-64

2100

-63

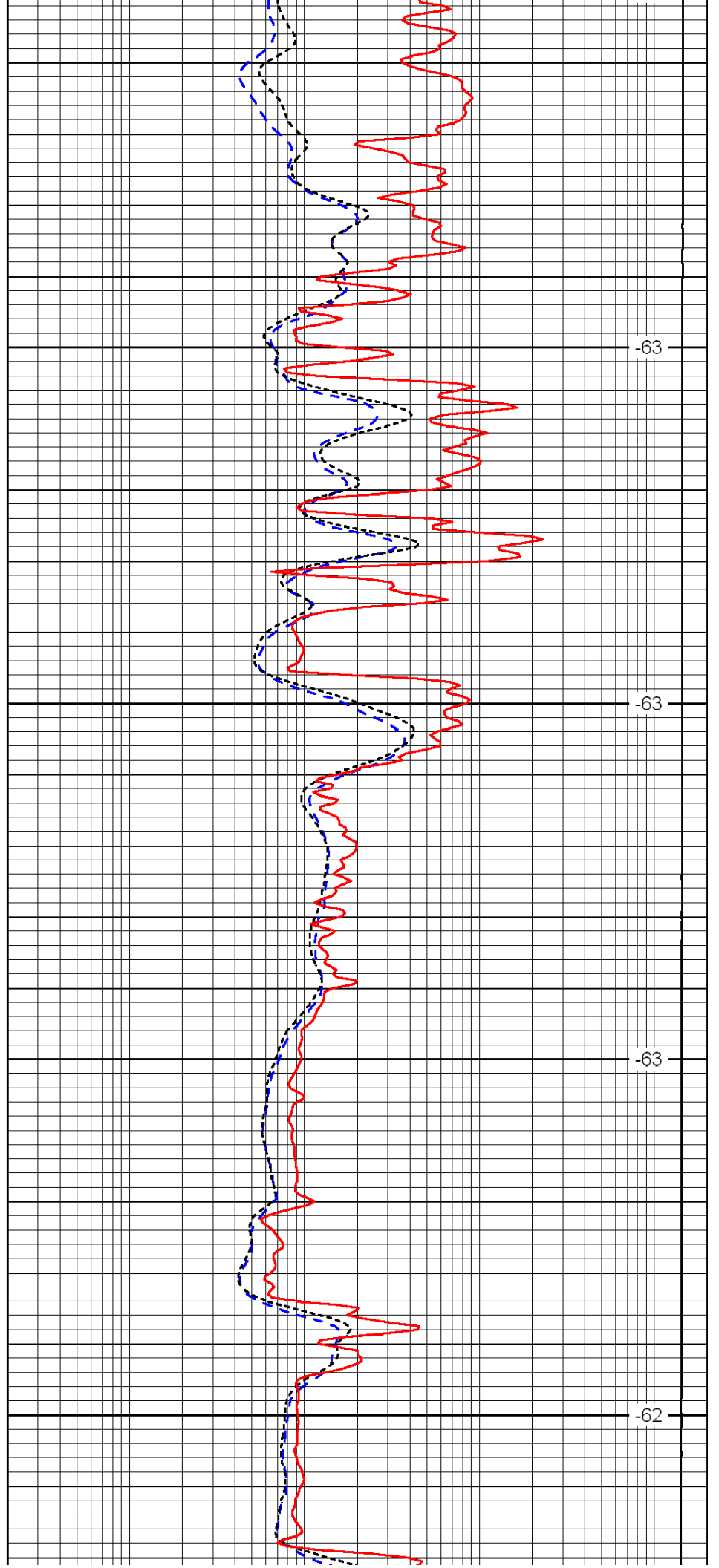


2150

2200

2250

2300

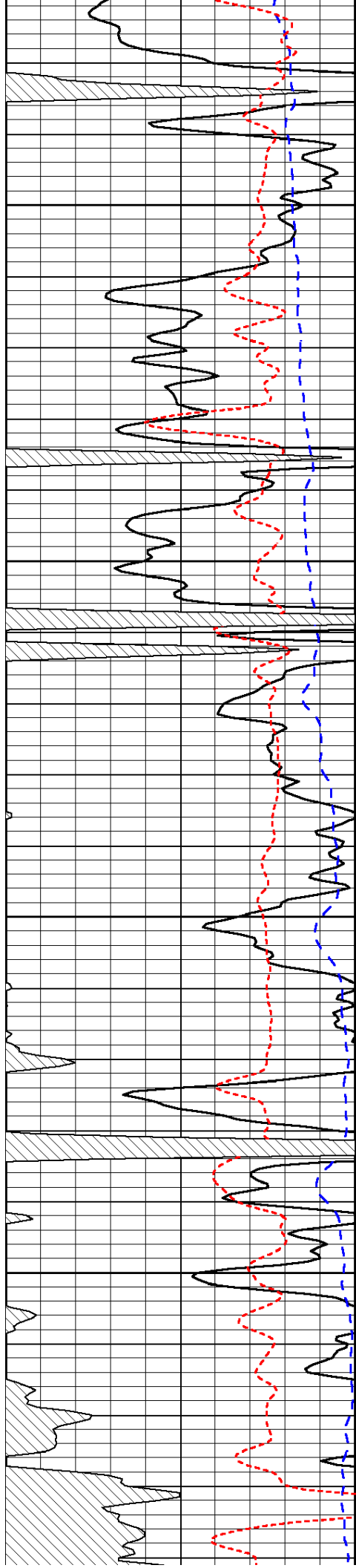


-63

-63

-63

-62

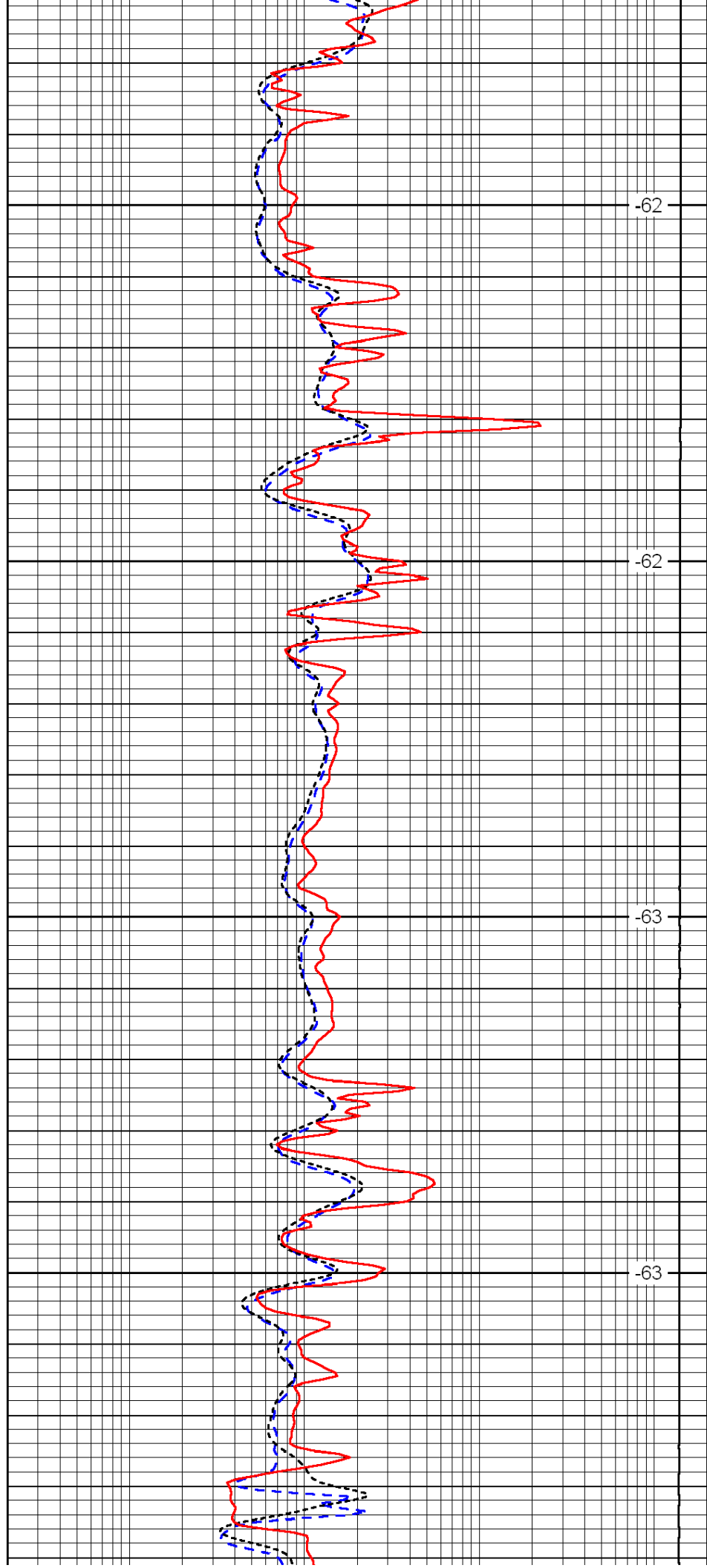


2350

2400

2450

2500

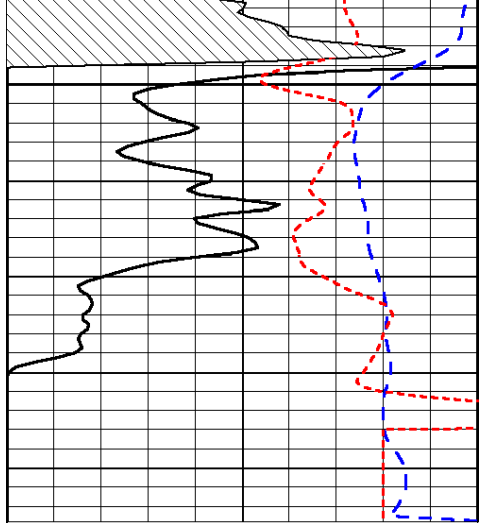


-62

-62

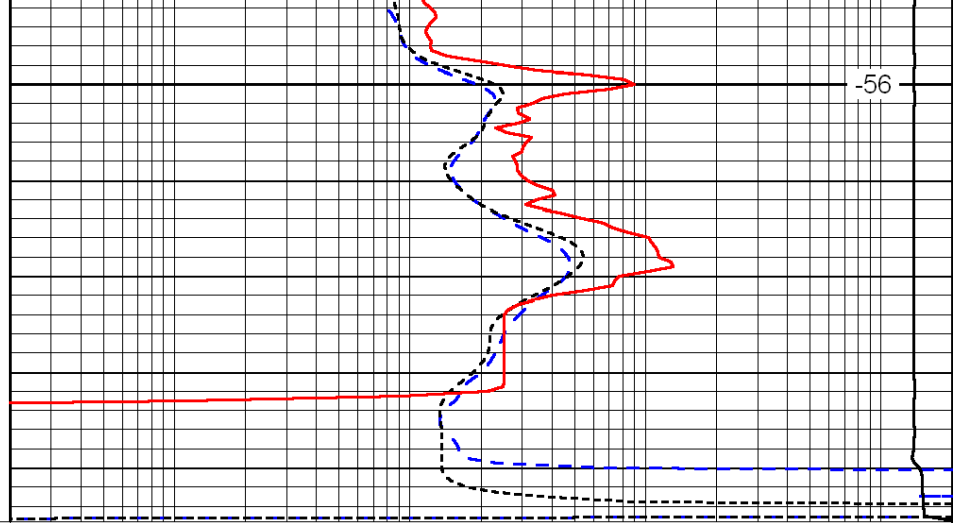
-63

-63



2550

0	Gamma Ray	150
-200	SP (mV)	0
-160	Rxo / Rt	40



-56

0.2	Deep Resistivity	2000
0.2	Medium Resistivity	2000
0.2	Shallow Resistivity	2000
15000	Line Tension	0

LSPD