



**SUPERIOR
Hays,
Kansas**

**MICRO
LOG**

Company DOWNING - NELSON OIL COMPANY, INC.
Well FHSU #1-7
Field
County ELLIS **State** KANSAS

Company DOWNING-NELSON OIL CO., INC.
Well FHSU #1-7
Field
County ELLIS
State KANSAS

Location: API #: 15-051-26131
 855' FNL & 1845' FEL
 SEC 7 TWP 14S RGE 18W
 Permanent Datum GROUND LEVEL Elevation 2060
 Log Measured From KELLY BUSHING 8' A.G.L.
 Drilling Measured From KELLY BUSHING
 Other Services
 CDL/CNL
 DIL/SON
 Elevation
 K.B. 2068
 D.F.
 G.L. 2060

Date	6-6-11
Run Number	TWO
Depth Driller	3793
Depth Logger	3793
Bottom Logged Interval	3776
Top Log Interval	3000
Casing Driller	223
Casing Logger	222
Bit Size	7.875
Type Fluid in Hole	CHEMICAL MUD
Density / Viscosity	9.2 / 58
pH / Fluid Loss	10.0 / 9.2
Source of Sample	FLOWLINE
Rm @ Meas. Temp	0.60 @ 90F
Rmf @ Meas. Temp	0.45 @ 90F
Rmc @ Meas. Temp	0.72 @ 90F
Source of Rmf / Rmc	MEASURED
Rm @ BHT	.480 @ 113F
Time Circulation Stopped	2 HOURS
Time Logger on Bottom	12:30 P.M.
Maximum Recorded Temperature	113F
Equipment Number	860
Location	HAYS, KS.
Recorded By	RUPP
Witnessed By	RON NELSON

<<< Fold Here >>>

All interpretations are opinions based on inferences from electrical or other measurements and we cannot and do not guarantee the accuracy or correctness of any interpretation, and we shall not, except in the case of gross or willful negligence on our part, be liable or responsible for any loss, costs, damages, or expenses incurred or sustained by anyone resulting from any interpretation made by any of our officers, agents or employees. These interpretations are also subject to our general terms and conditions set out in our current Price Schedule.

Comments

SUPERIOR WELL SERVICES
 785-628-6395
THANK YOU FOR YOUR BUSINESS
 DIRECTIONS: EXPERIMENT STATION RD., S TO SPRING HILL RD., 1W, 1S, 1/2W, S INTO.



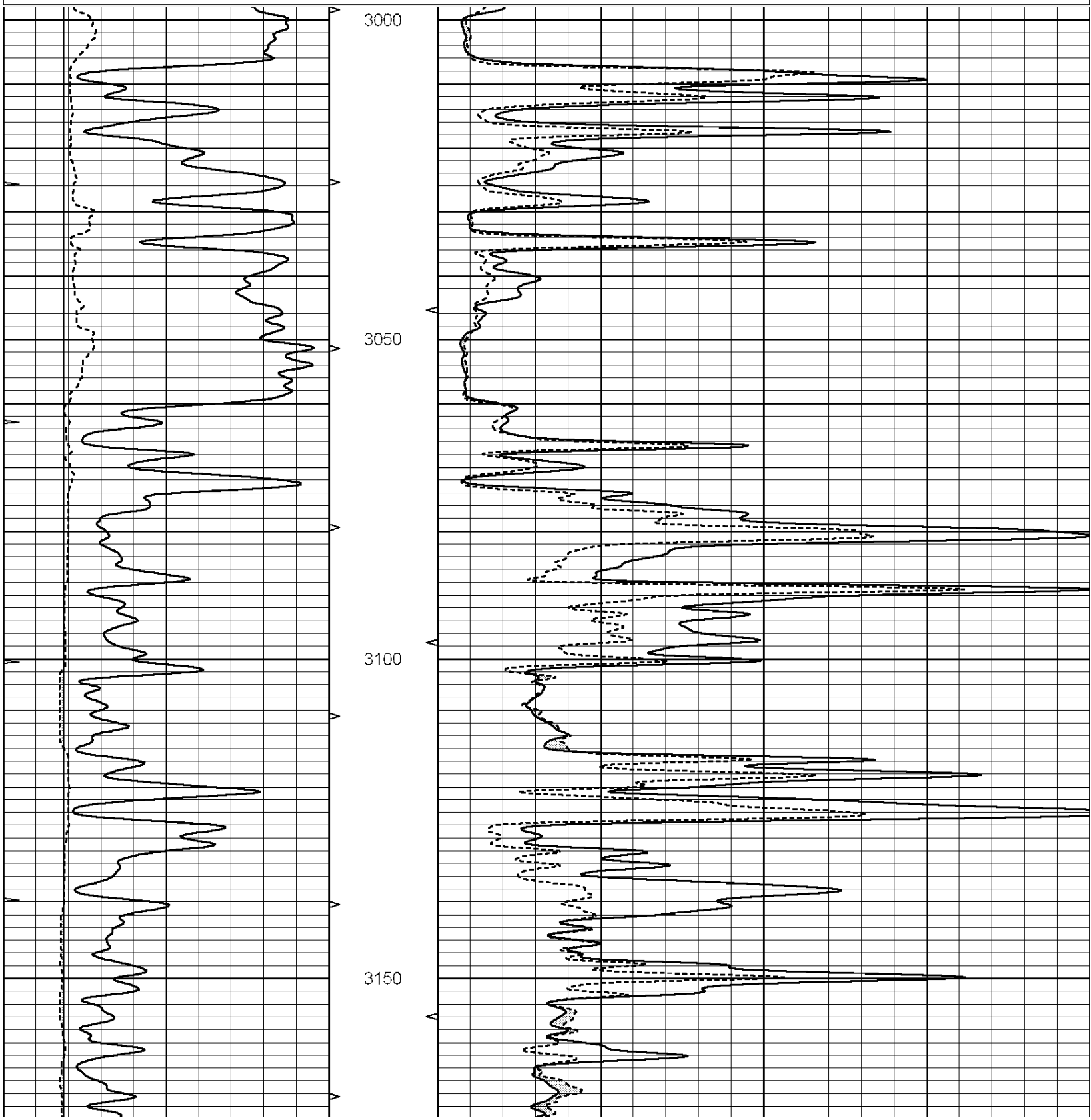
**SUPERIOR
Hays,
Kansas**

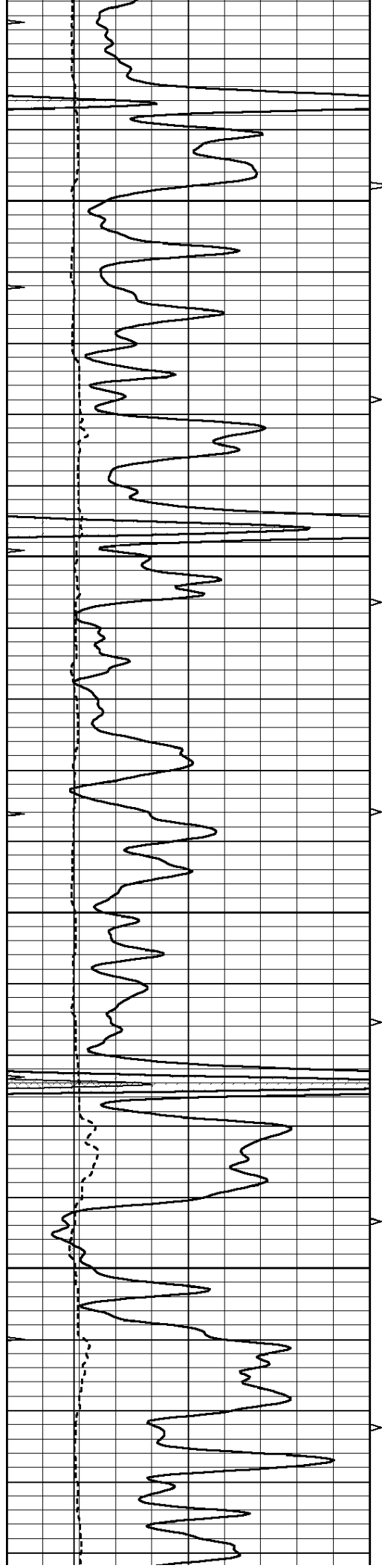
MAIN SECTION

Database File: 006931ddn.db
 Dataset Pathname: pass5.1
 Presentation Format: micro
 Dataset Creation: Mon Jun 06 16:04:18 2011 by Calc Open-Cased 090629
 Charted by: Depth in Feet scaled 1:240

0	GAMMA RAY (GAPI)	150
6	MELCAL (in)	16
0	MINMK	20

0	MEL1.5 (Ohm-m)	40
0	MEL2.0 (Ohm-m)	40



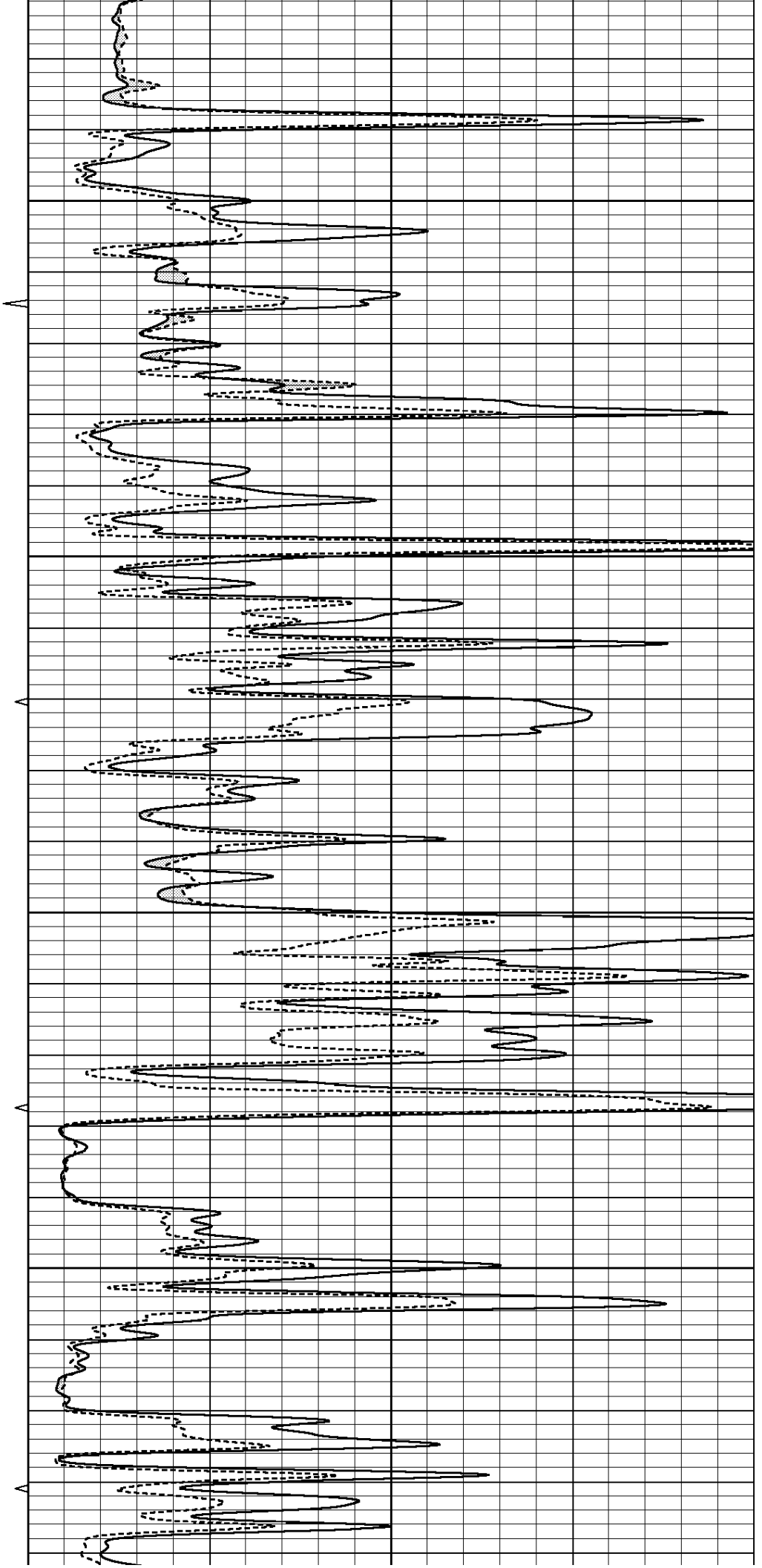


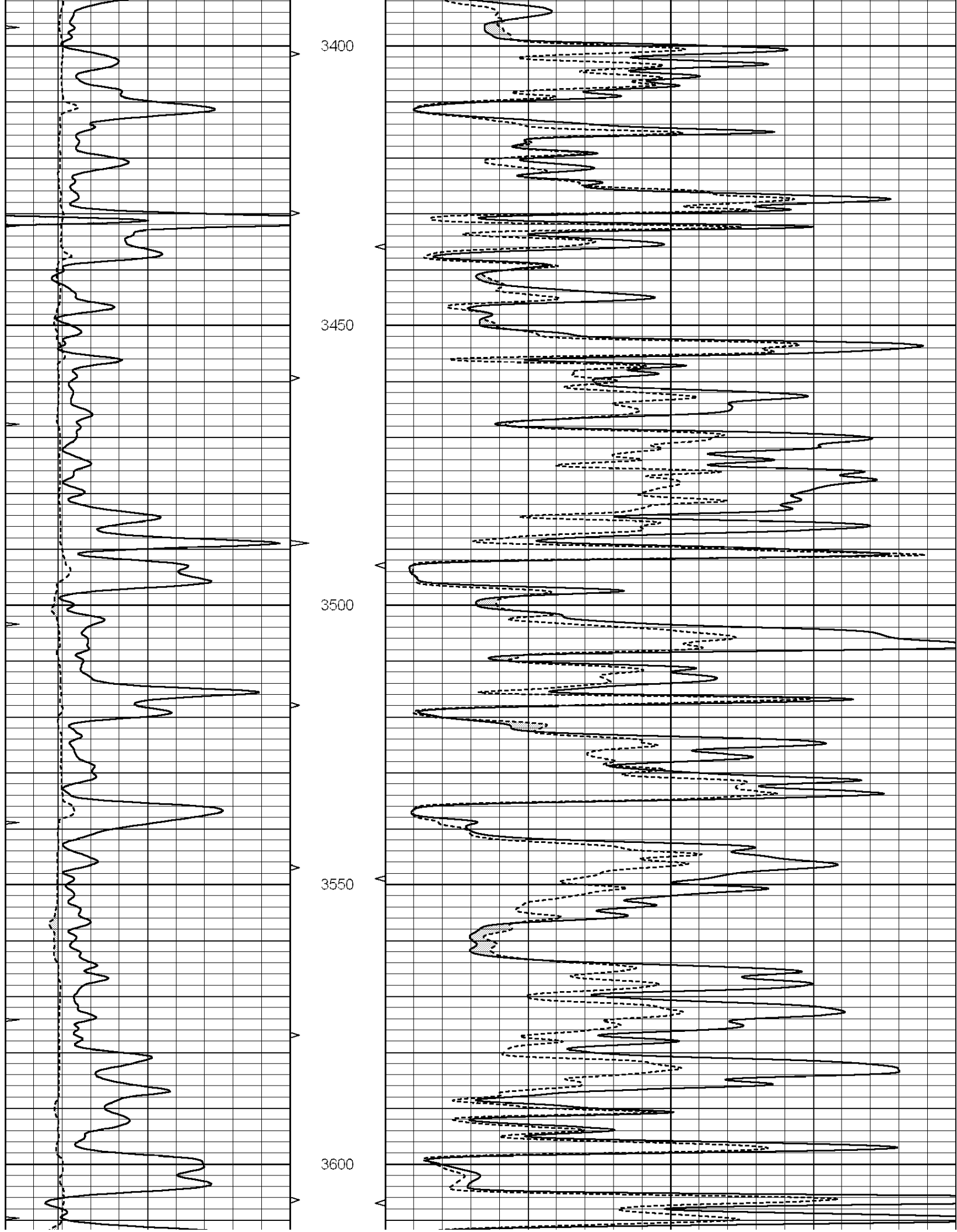
3200

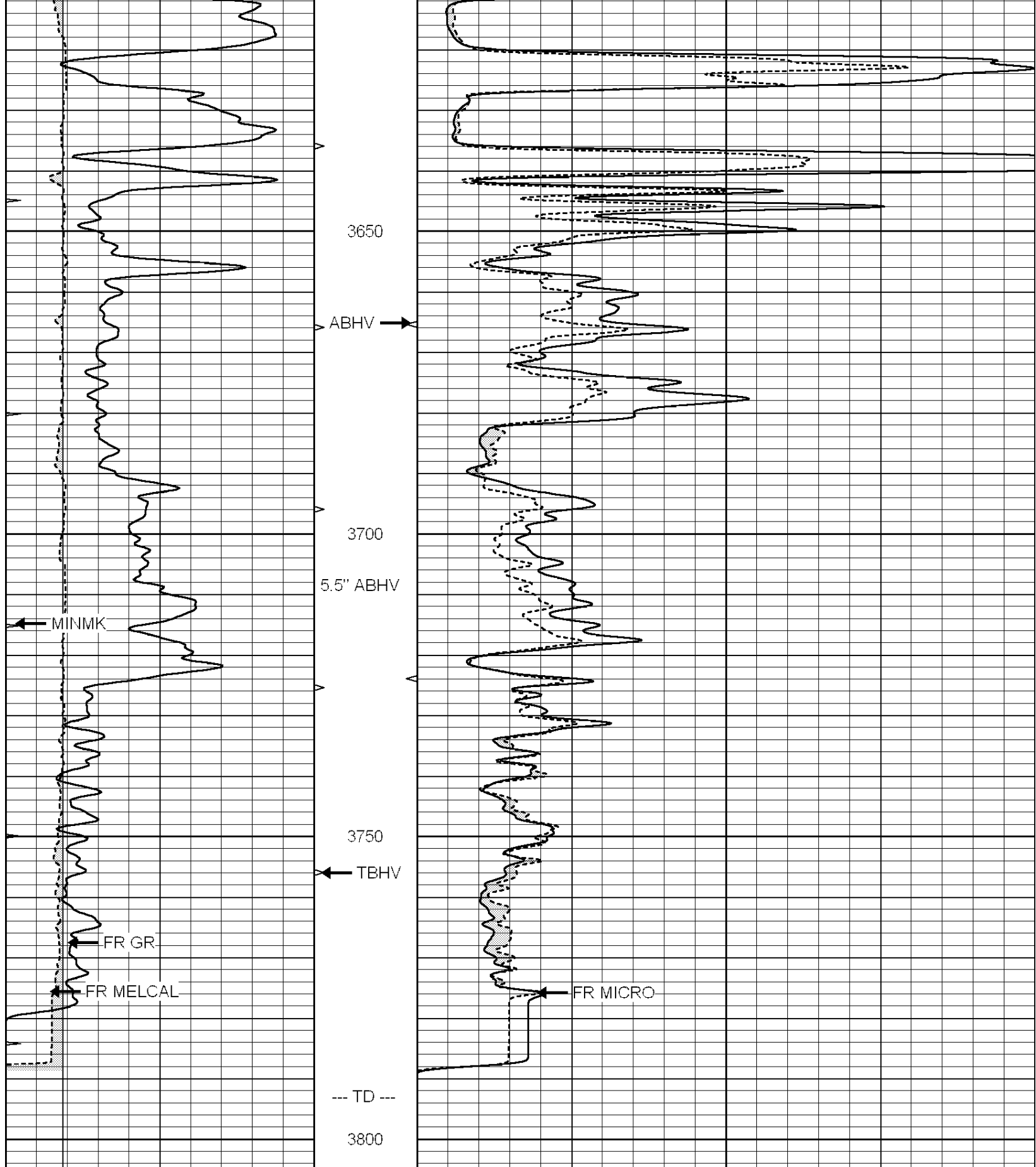
3250

3300

3350







0	GAMMA RAY (GAPI)	150
6	MELCAL (in)	16
0	MINMK	20

0	MEL1.5 (Ohm-m)	40
0	MEL2.0 (Ohm-m)	40



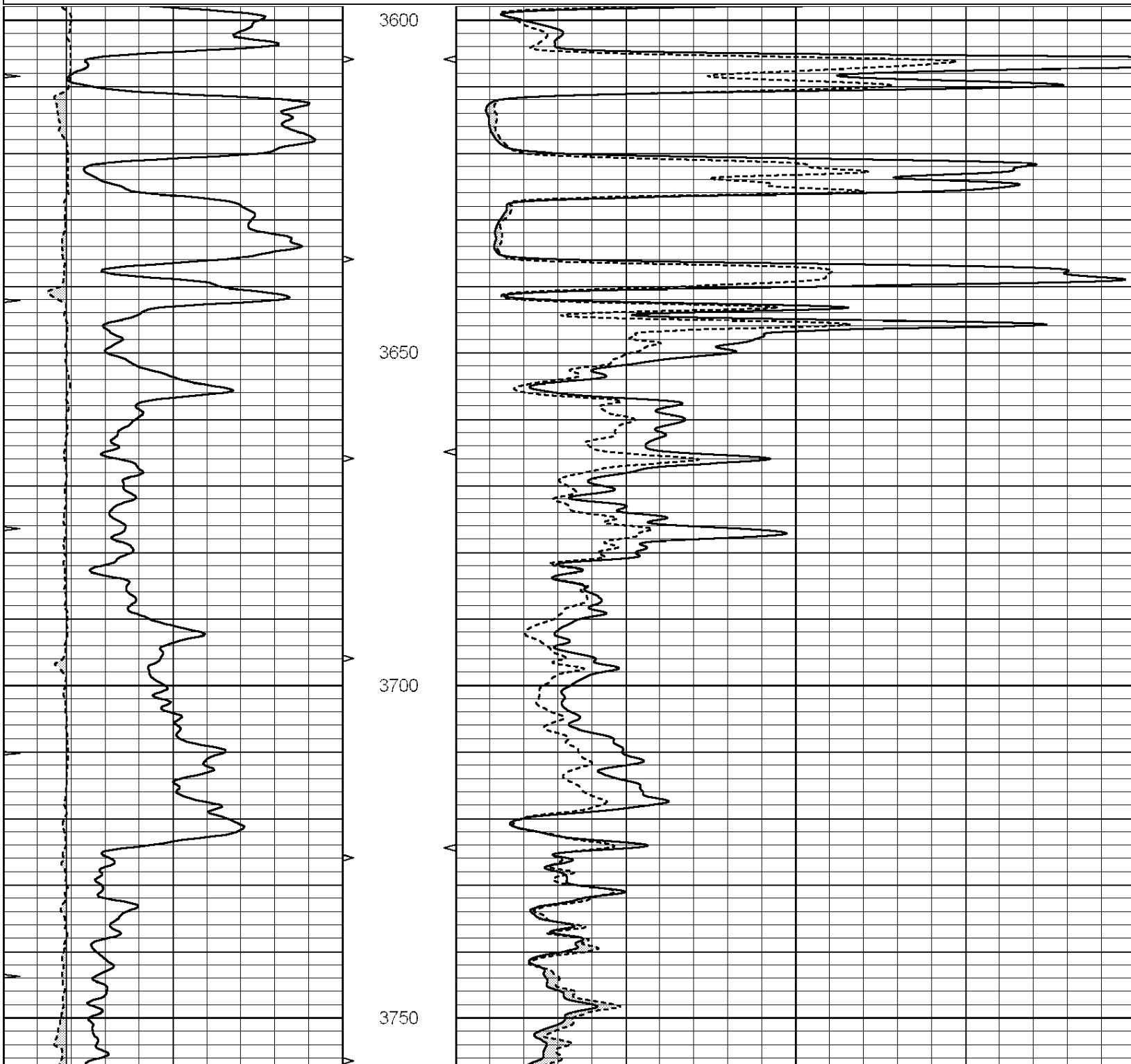
SUPERIOR
Hays,
Kansas

REPEAT SECTION

Database File: 006931ddn.db
 Dataset Pathname: pass4.1
 Presentation Format: micro
 Dataset Creation: Mon Jun 06 16:09:36 2011 by Calc Open-Cased 090629
 Charted by: Depth in Feet scaled 1:240

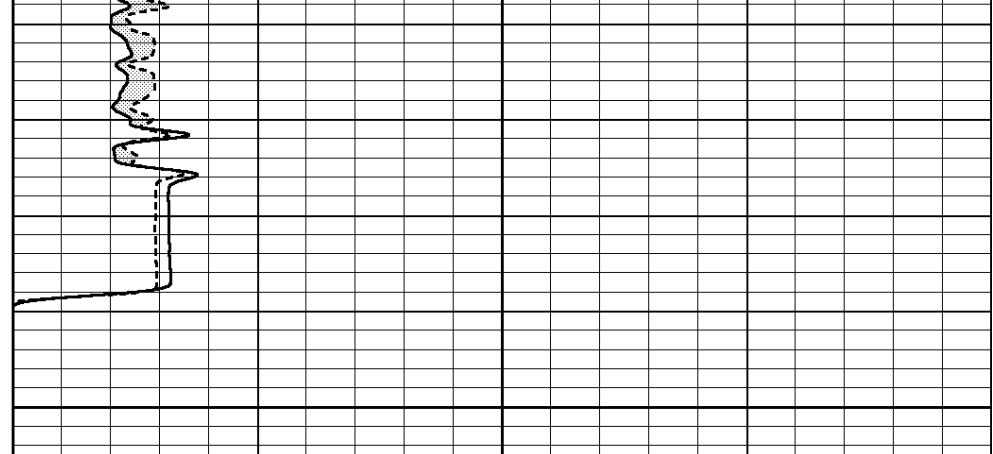
0	GAMMA RAY (GAPI)	150
6	MELCAL (in)	16
0	MINMK	20

0	MEL1.5 (Ohm-m)	40
0	MEL2.0 (Ohm-m)	40





3800



0	GAMMA RAY (GAPI)	150
6	MELCAL (in)	16
0	MINMK	20

0	MEL1.5 (Ohm-m)	40
0	MEL2.0 (Ohm-m)	40

Calibration Report

Database File: 006931ddn.db
 Dataset Pathname: pass5.1
 Dataset Creation: Mon Jun 06 16:04:18 2011 by Calc Open-Cased 090629

MICRO Calibration Report

Serial Number:	Micro1	
Tool Model:	ProbeL	
Performed:	Mon Jun 06 14:22:53 2011	
Caliper Calibration:	Gain=2.650	Offset=-0.669
References	Low Cal 7.900	High Cal 13.000
Readings	3.233	5.157
1.5" Calibration:	Gain=38.000	Offset=-0.100
References	Low Cal 0.000	High Cal 20.000
Readings	0.003	0.844
2" Calibration:	Gain=34.000	Offset=-0.300
References	Low Cal 0.000	High Cal 20.000
Readings	0.028	0.817

Gamma Ray Calibration Report

Serial Number:	GR5	
Tool Model:	OPEN	
Performed:	Mon Jun 06 15:02:40 2011	
Calibrator Value:	1.0	GAPI
Background Reading:	0.0	cps
Calibrator Reading:	1.0	cps
Sensitivity:	0.6500	GAPI/cps