



**SUPERIOR
Hays,
Kansas**

**DUAL
INDUCTION
LOG**

Company DOWNING - NELSON OIL COMPANY, INC.
Well FHSU #1-7
Field
County ELLIS **State** KANSAS

Company DOWNING-NELSON OIL CO., INC.
Well FHSU #1-7
Field
County ELLIS
State KANSAS

Location: API #: 15-051-26131
 855' FNL & 1845' FEL
 SEC 7 TWP 14S RGE 18W
 Permanent Datum GROUND LEVEL Elevation 2060
 Log Measured From KELLY BUSHING 8' A.G.L.
 Drilling Measured From KELLY BUSHING
 Other Services
 CDL/CNL
 SONIC/MEL
 Elevation
 K.B. 2068
 D.F.
 G.L. 2060

Date	6-6-11
Run Number	ONE
Depth Driller	3793
Depth Logger	3793
Bottom Logged Interval	3791
Top Log Interval	00
Casing Driller	223
Casing Logger	222
Bit Size	7.875
Type Fluid in Hole	CHEMICAL MUD
Density / Viscosity	9.2 / 58
pH / Fluid Loss	10.0 / 9.2
Source of Sample	FLOWLINE
Rim @ Meas. Temp	0.60 @ 90F
Rmf @ Meas. Temp	0.45 @ 90F
Rmc @ Meas. Temp	0.72 @ 90F
Source of Rmf / Rmc	MEASURED
Rim @ BHT	.480 @ 113F
Time Circulation Stopped	2 HOURS
Time Logger on Bottom	12:30 P.M.
Maximum Recorded Temperature	113F
Equipment Number	860
Location	HAYS, KS.
Recorded By	RUPP
Witnessed By	RON NELSON

<<< Fold Here >>>

All interpretations are opinions based on inferences from electrical or other measurements and we cannot and do not guarantee the accuracy or correctness of any interpretation, and we shall not, except in the case of gross or willful negligence on our part, be liable or responsible for any loss, costs, damages, or expenses incurred or sustained by anyone resulting from any interpretation made by any of our officers, agents or employees. These interpretations are also subject to our general terms and conditions set out in our current Price Schedule.

Comments

SUPERIOR WELL SERVICES
 785-628-6395
THANK YOU FOR YOUR BUSINESS
 DIRECTIONS: EXPERIMENT STATION RD., S TO SPRING HILL RD., 1W, 1S, 1/2W, S INTO.



**SUPERIOR
Hays,
Kansas**

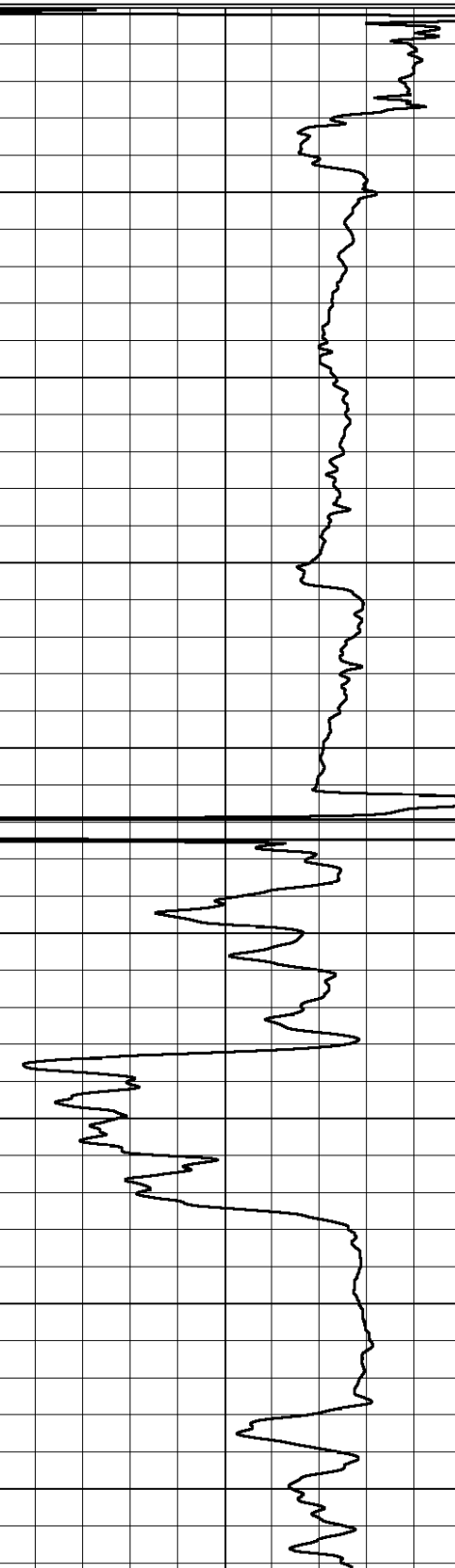
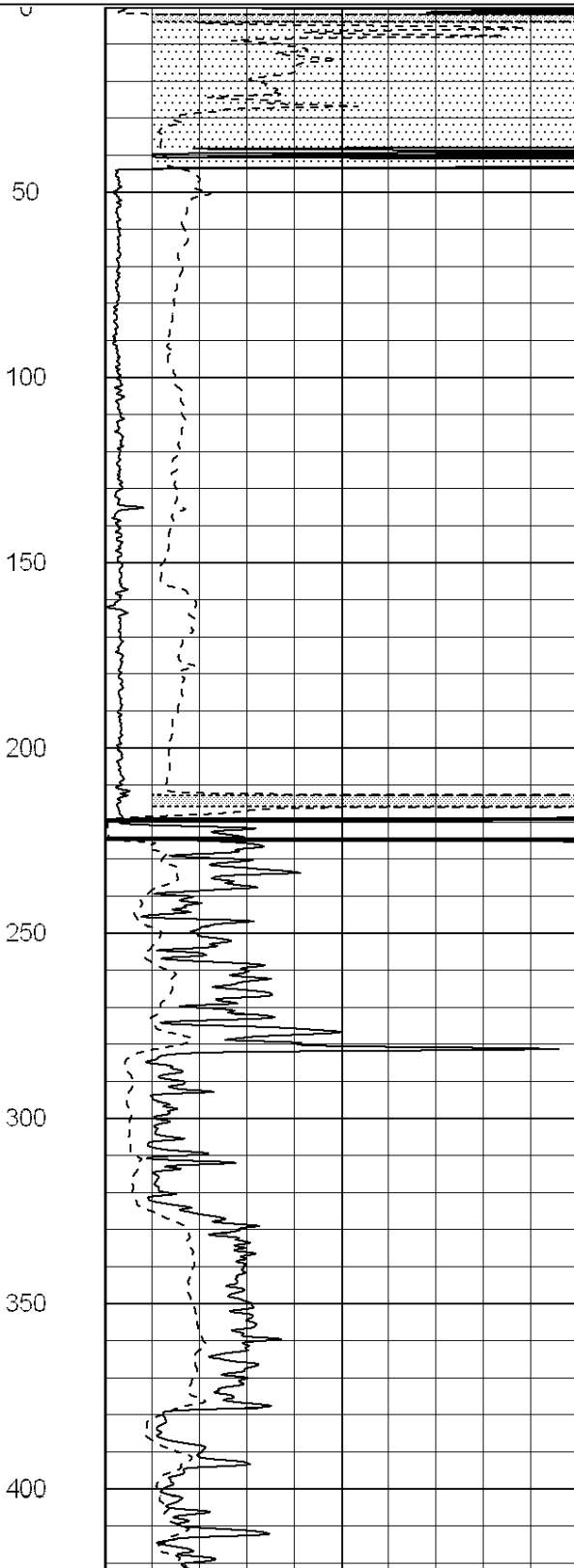
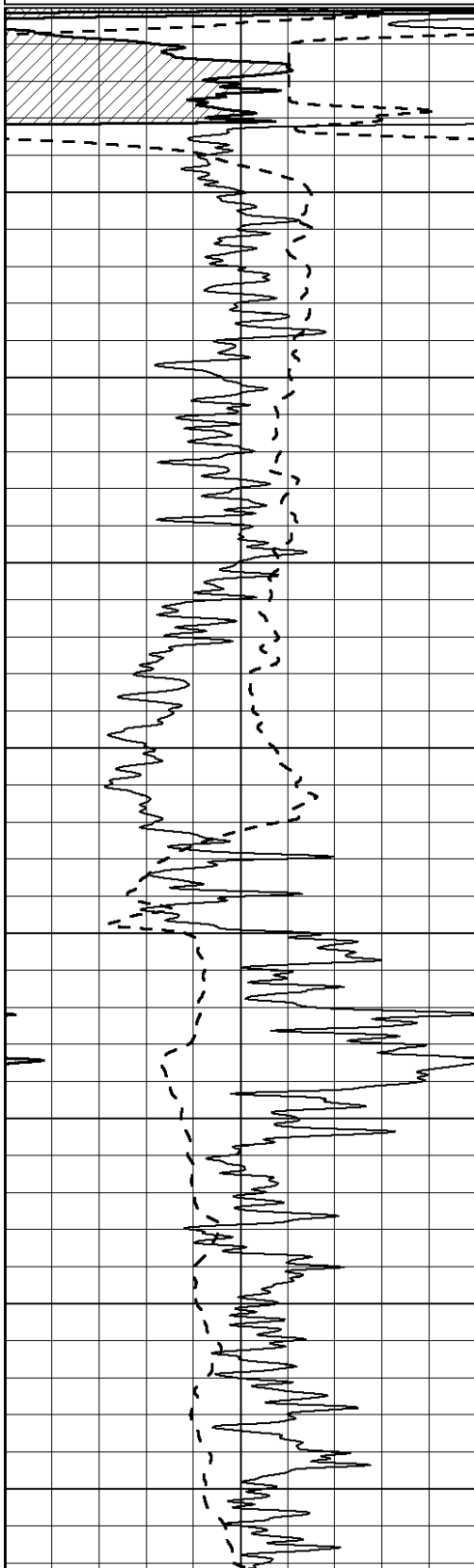
MAIN SECTION

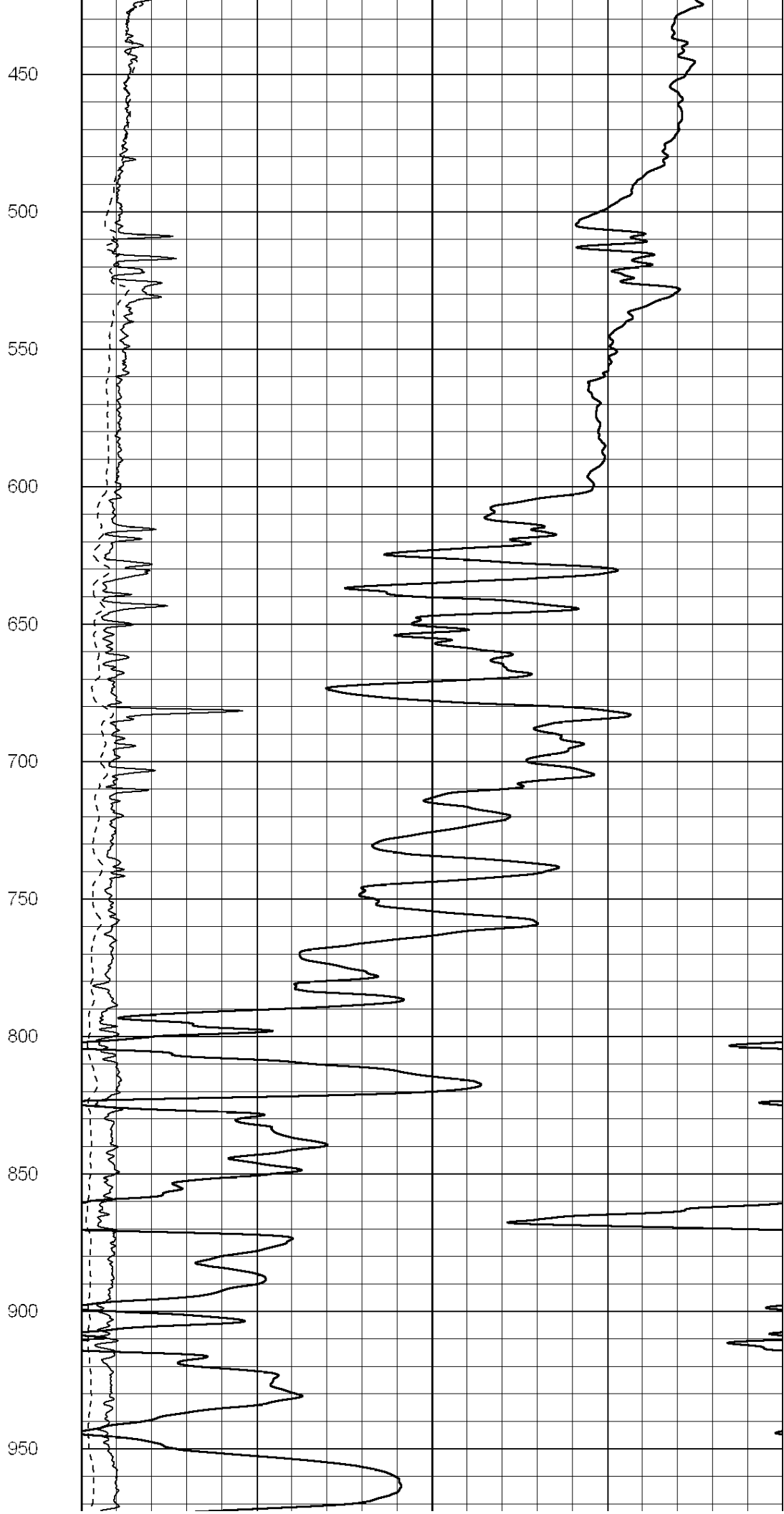
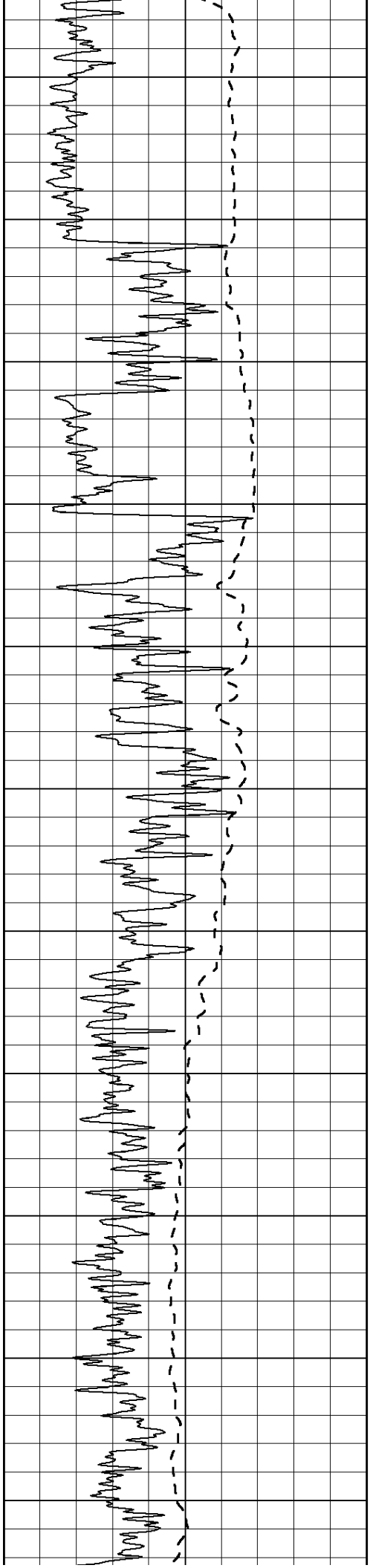
Database File: 006931ddn.db
 Dataset Pathname: pass3.A
 Presentation Format: dil2
 Dataset Creation: Mon Jun 06 14:13:27 2011
 Charted by: Depth in Feet scaled 1:600

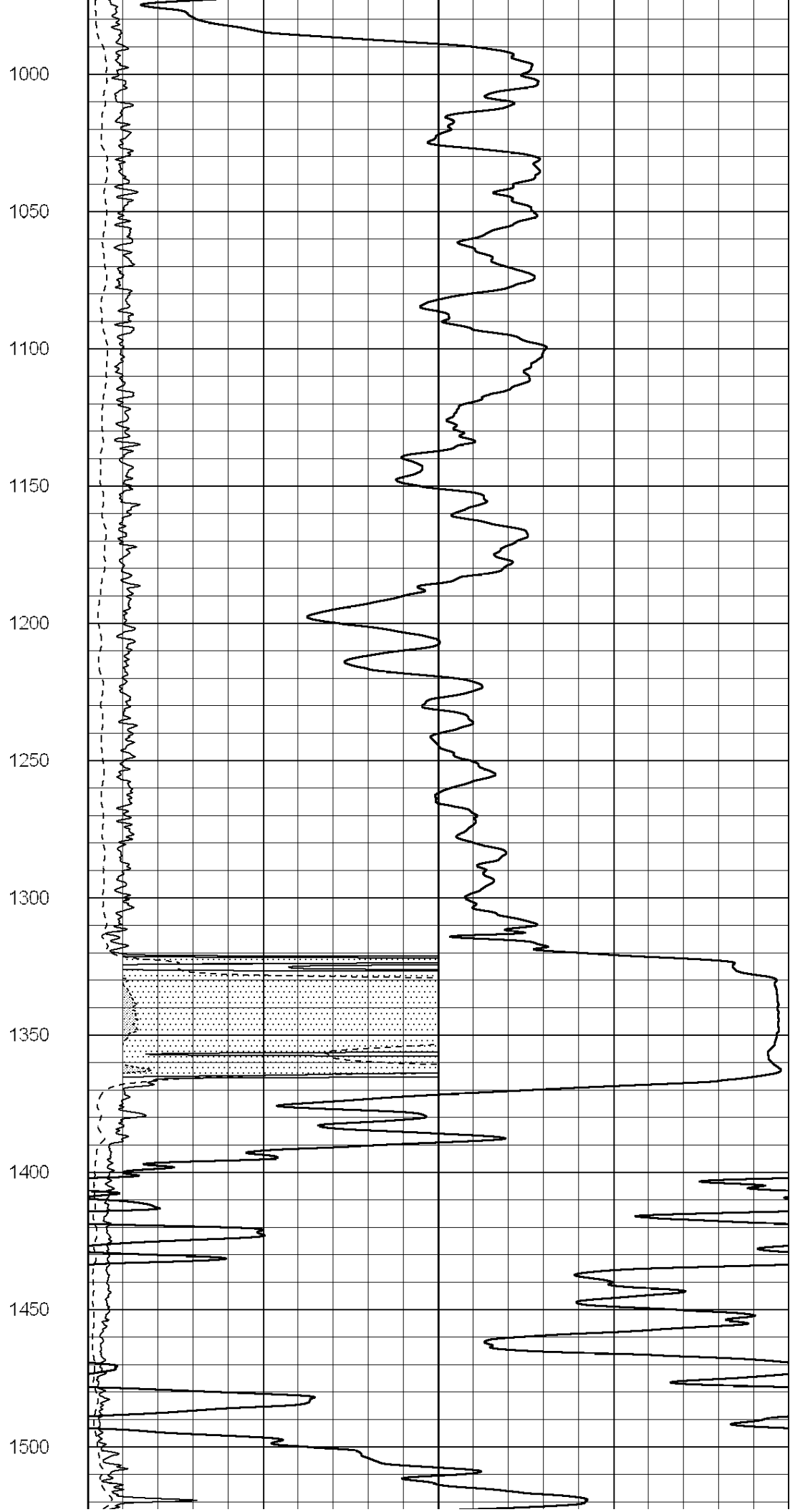
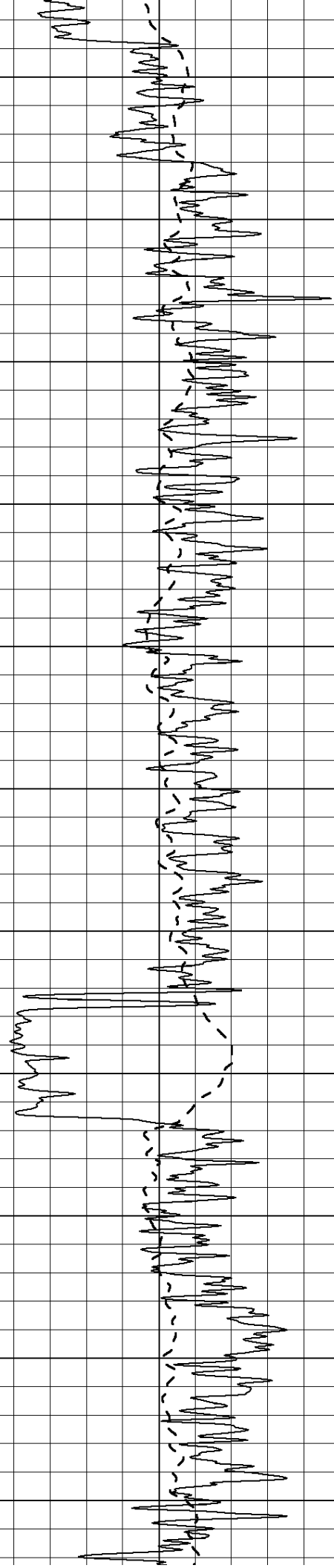
0	Gamma Ray (GAPI)	150
-100	SP (mV)	100

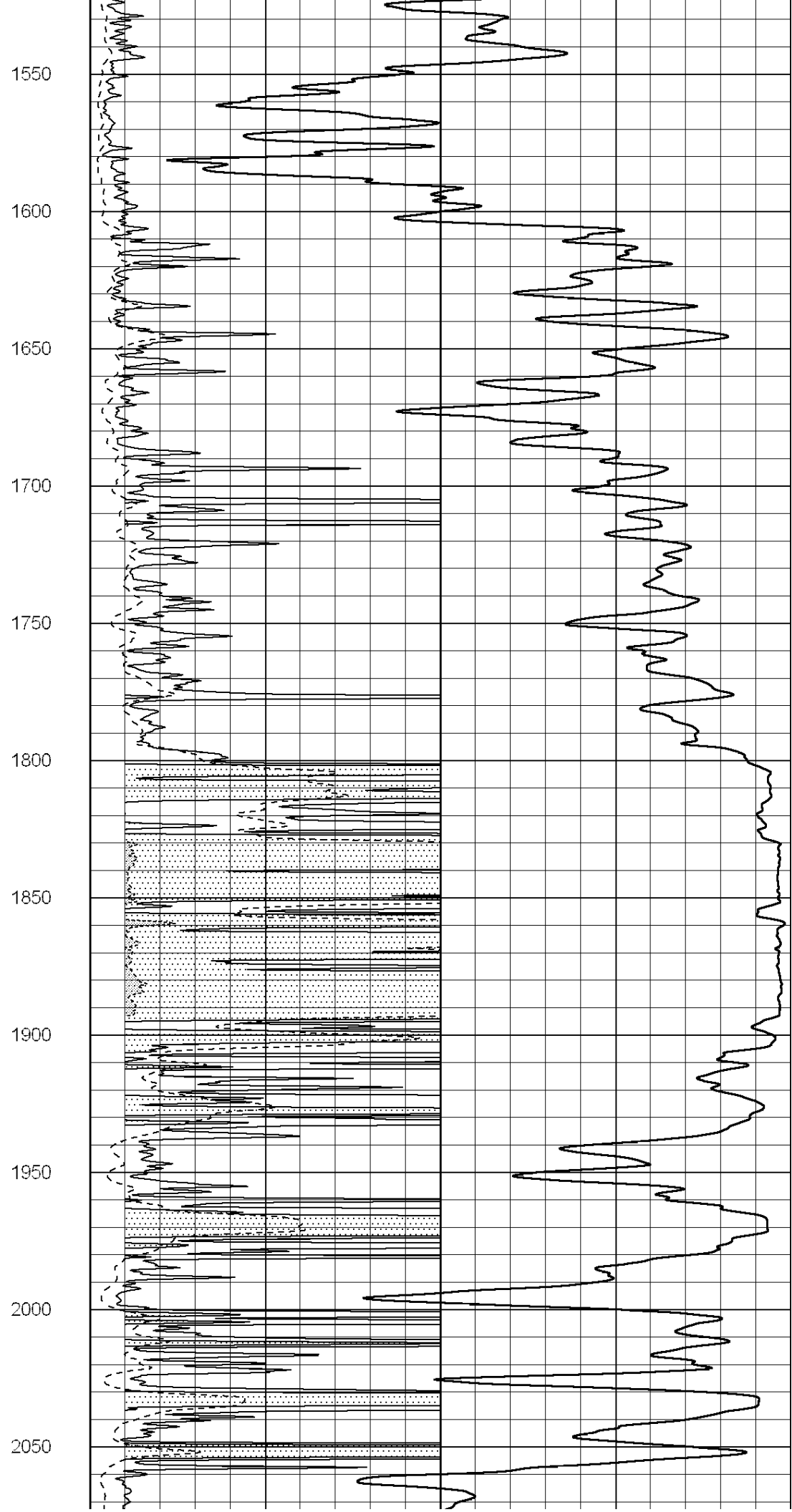
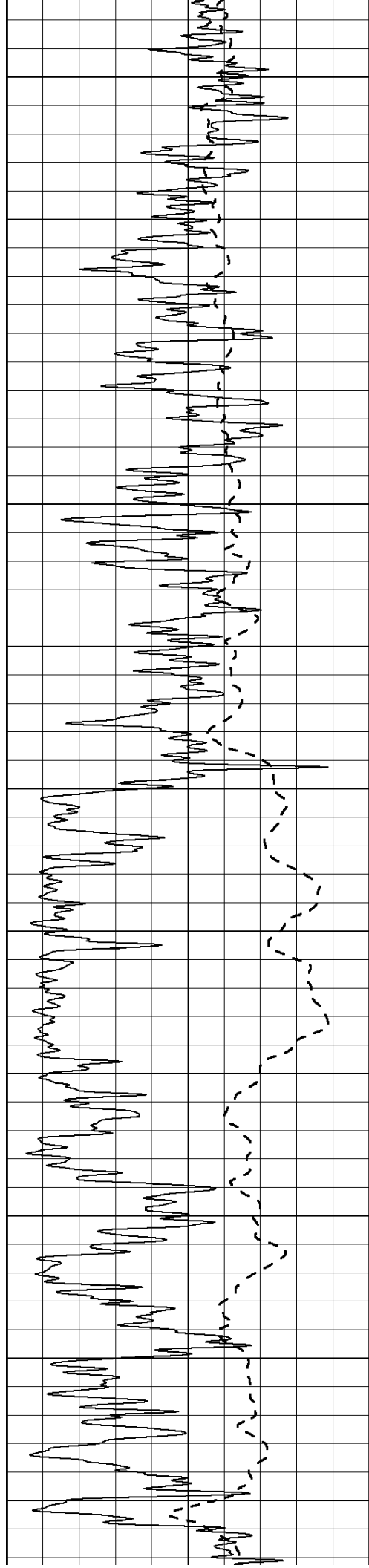
0	RLL3 (Ohm-m)	50
0	Deep Induction (Ohm-m)	50

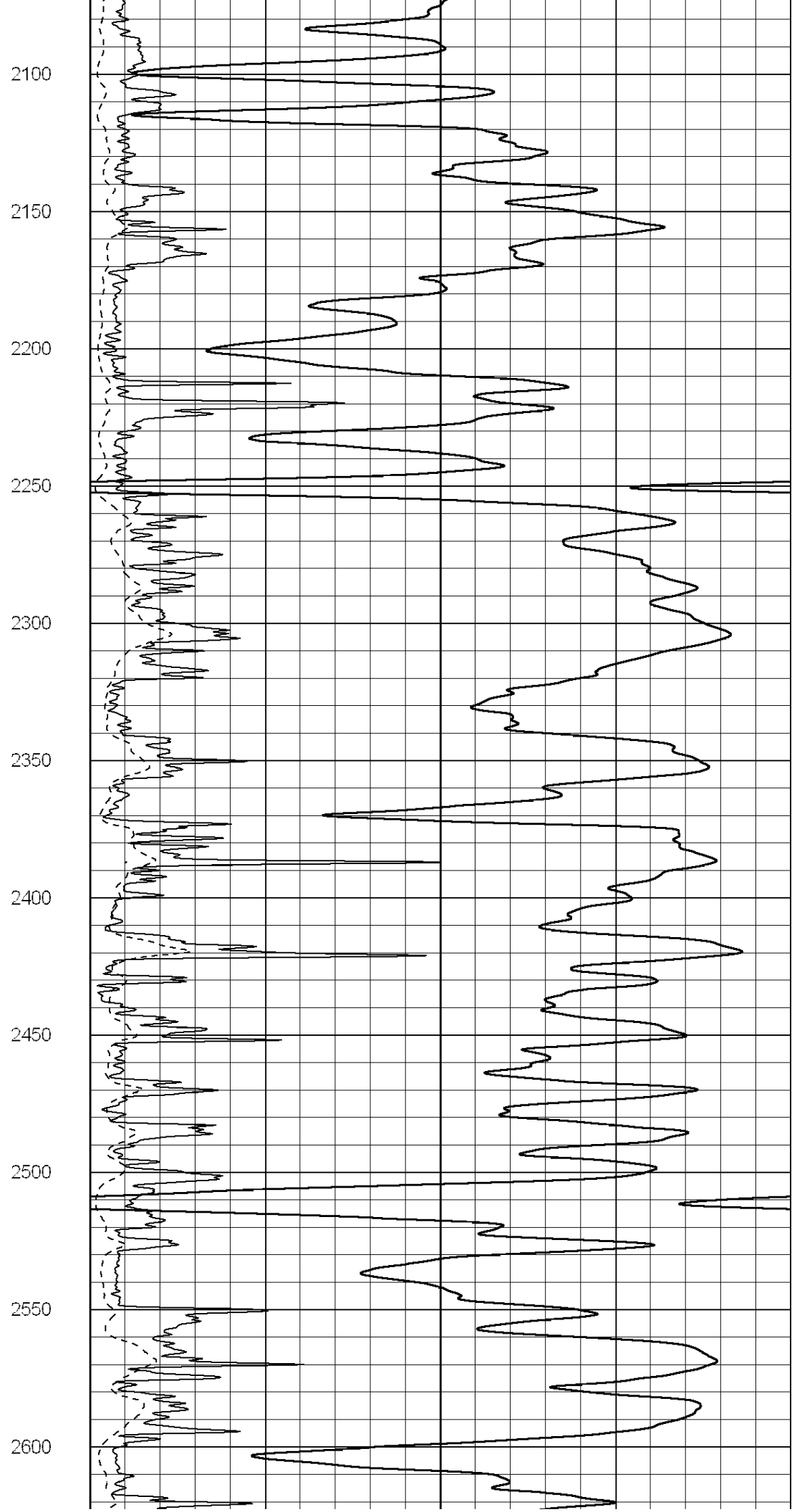
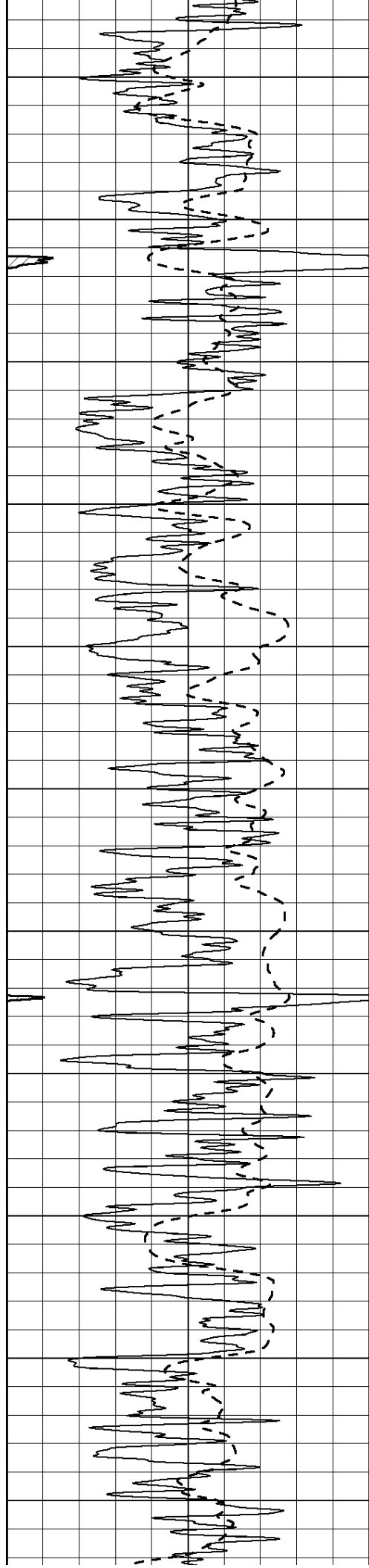
1000	CILD (mmho/m)	0
50	RILD X10 (Ohm-m)	500
50	RLL3 X10 (Ohm-m)	500

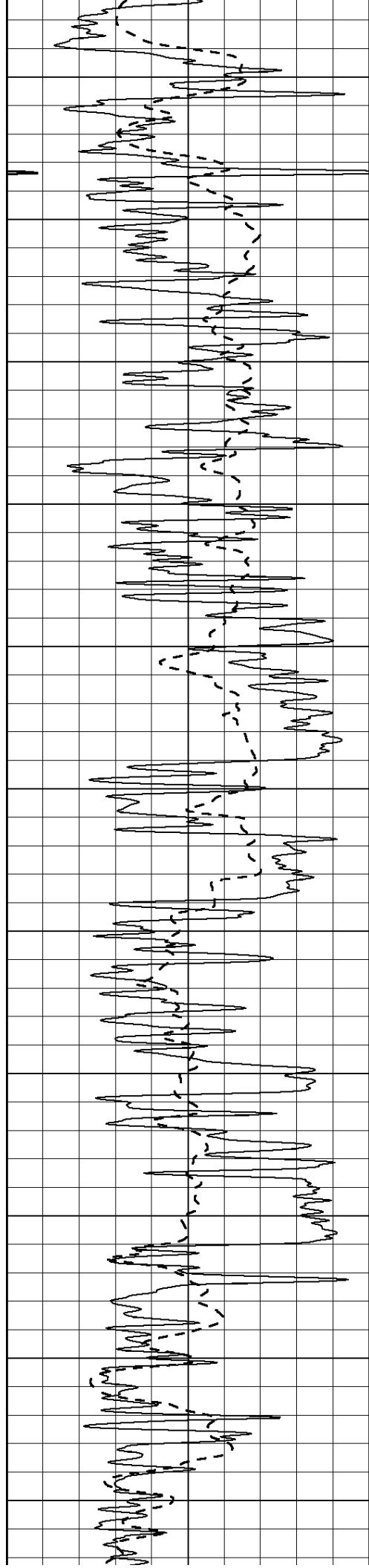












2650

2700

2750

2800

2850

2900

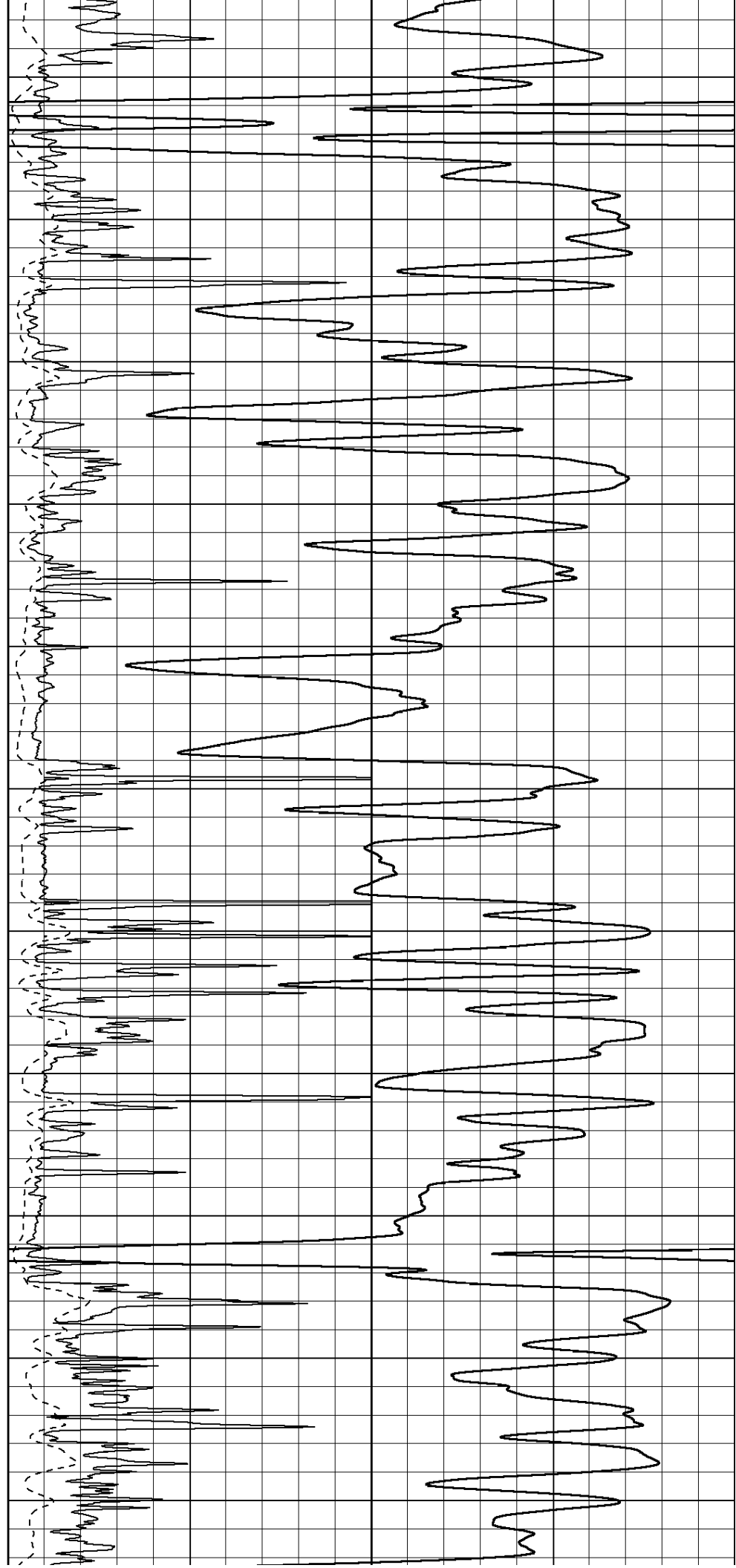
2950

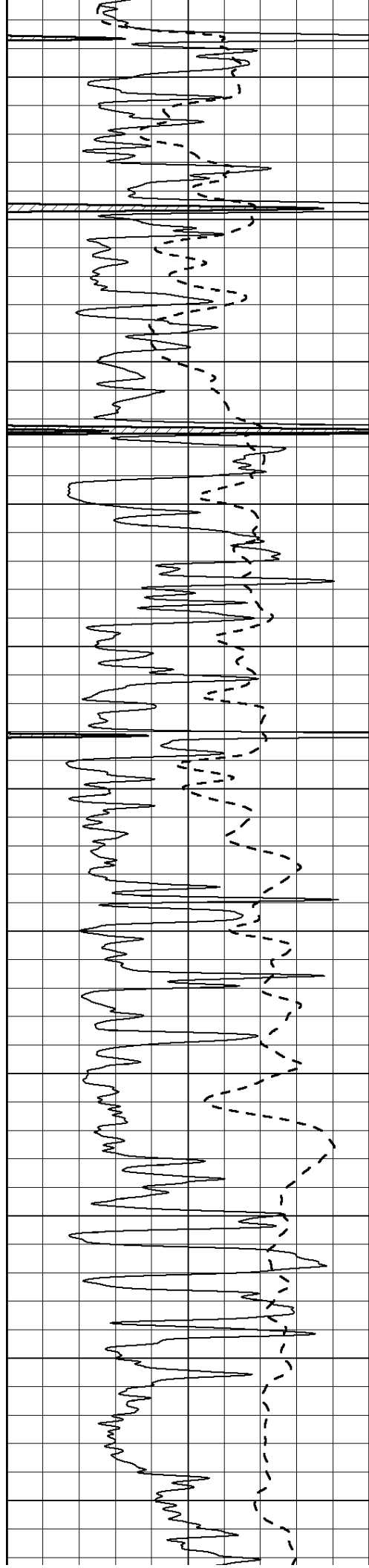
3000

3050

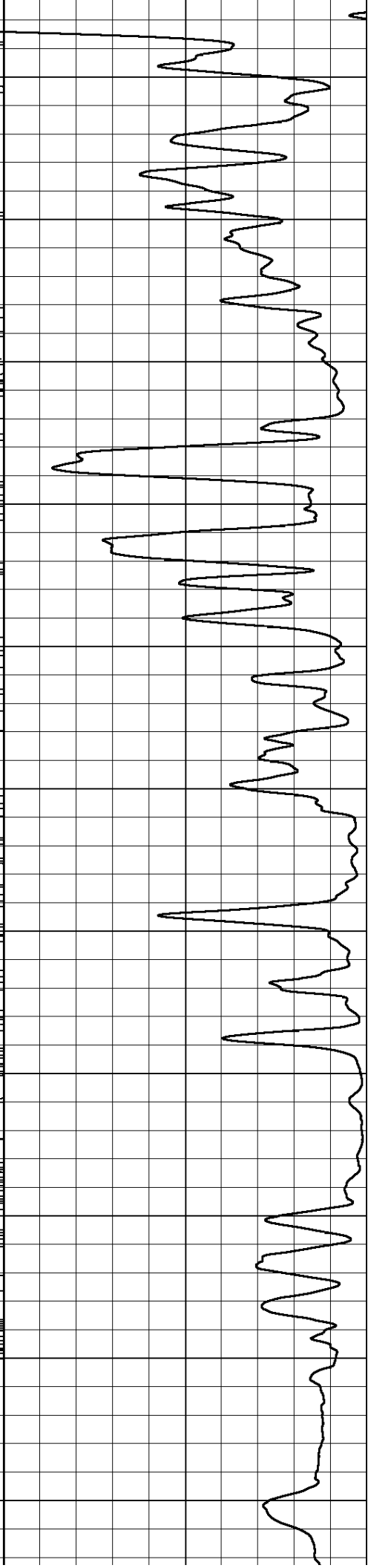
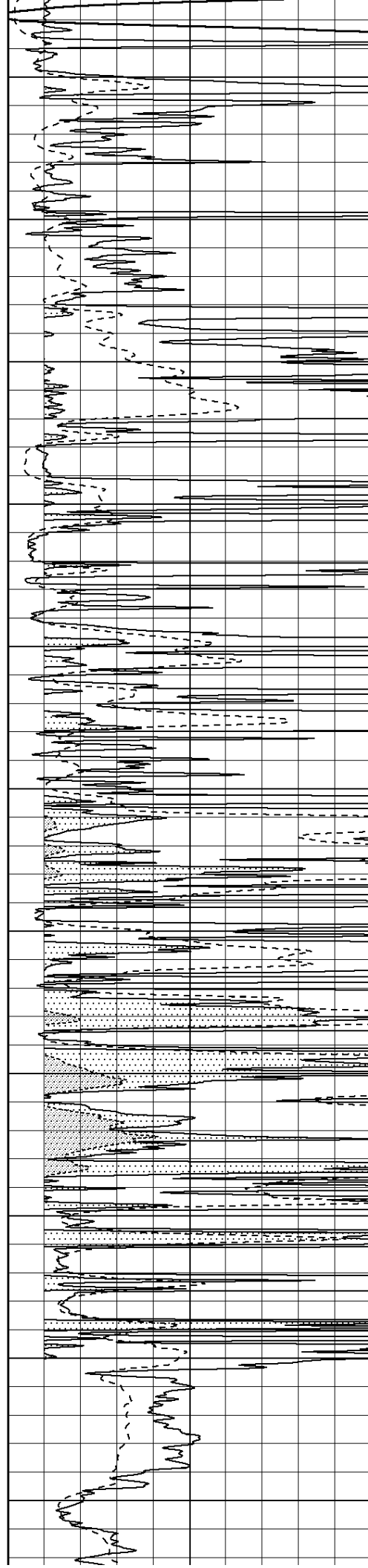
3100

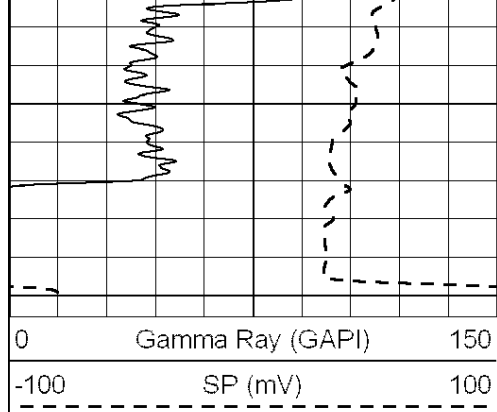
3150



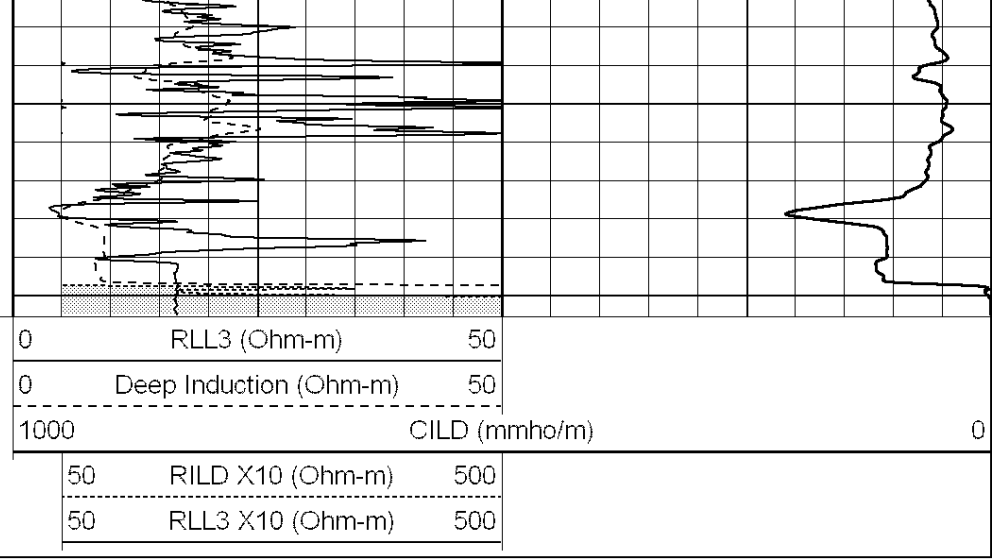


3200
3250
3300
3350
3400
3450
3500
3550
3600
3650
3700





3750
3800



0 Gamma Ray (GAPI) 150
-100 SP (mV) 100

0 RLL3 (Ohm-m) 50
0 Deep Induction (Ohm-m) 50
1000 CILD (mmho/m) 0
50 RILD X10 (Ohm-m) 500
50 RLL3 X10 (Ohm-m) 500



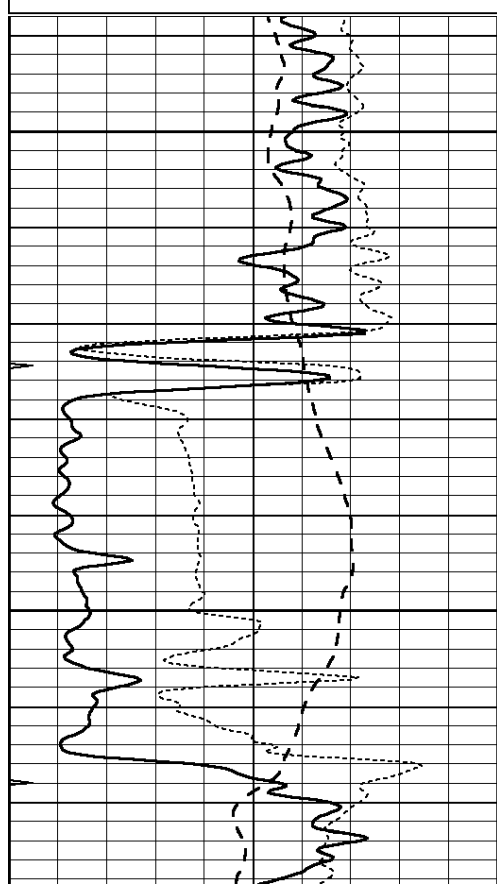
SUPERIOR
Hays,
Kansas

MAIN SECTION

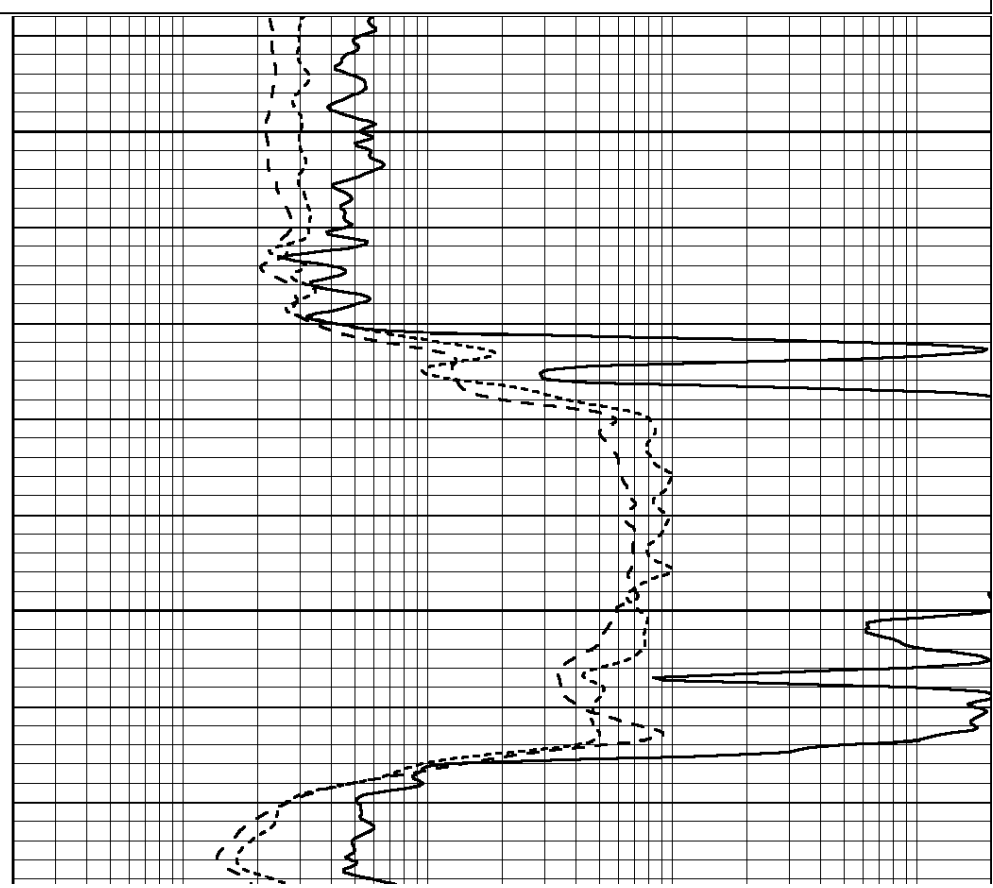
Database File: 006931ddn.db
Dataset Pathname: pass3.A
Presentation Format: dil
Dataset Creation: Mon Jun 06 14:13:27 2011
Charted by: Depth in Feet scaled 1:240

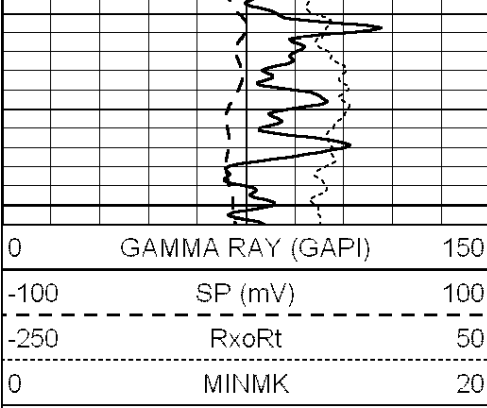
0 GAMMA RAY (GAPI) 150
-100 SP (mV) 100
-250 RxoRt 50
0 MINMK 20

0.2 RLL3 (Ohm-m) 2000
0.2 DEEP INDUCTION (Ohm-m) 2000
0.2 MEDIUM INDUCTION (Ohm-m) 2000

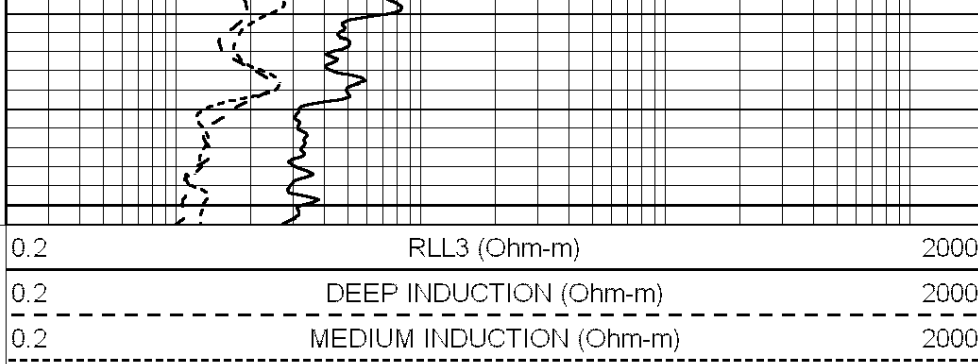


1300
1350





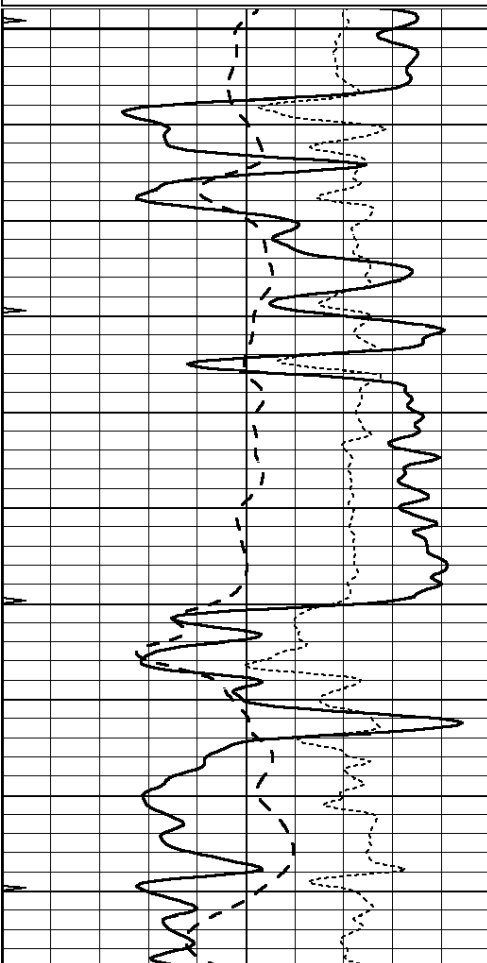
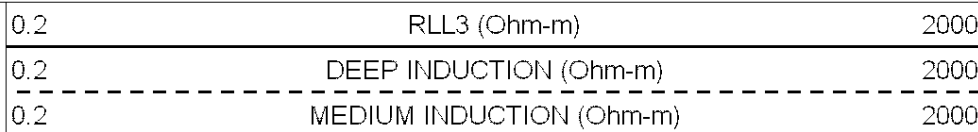
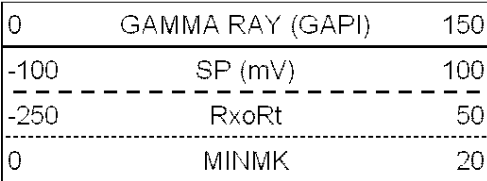
1400



SUPERIOR
Hays,
Kansas

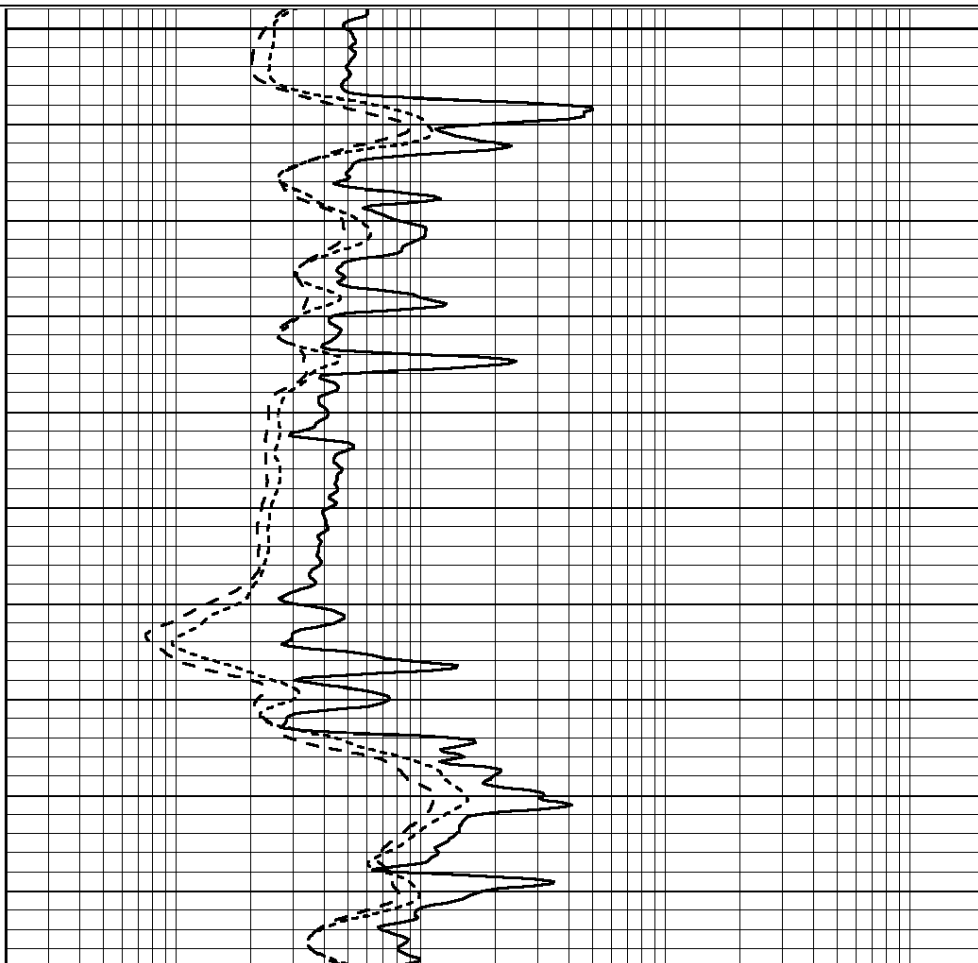
MAIN SECTION

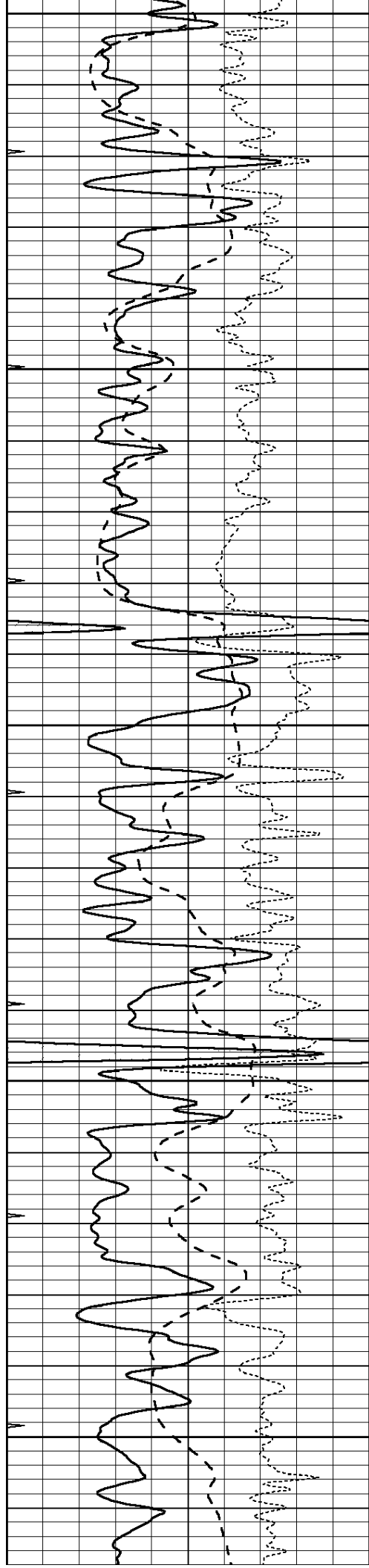
Database File: 006931ddn.db
 Dataset Pathname: pass3.A
 Presentation Format: dil
 Dataset Creation: Mon Jun 06 14:13:27 2011
 Charted by: Depth in Feet scaled 1:240



3000

3050





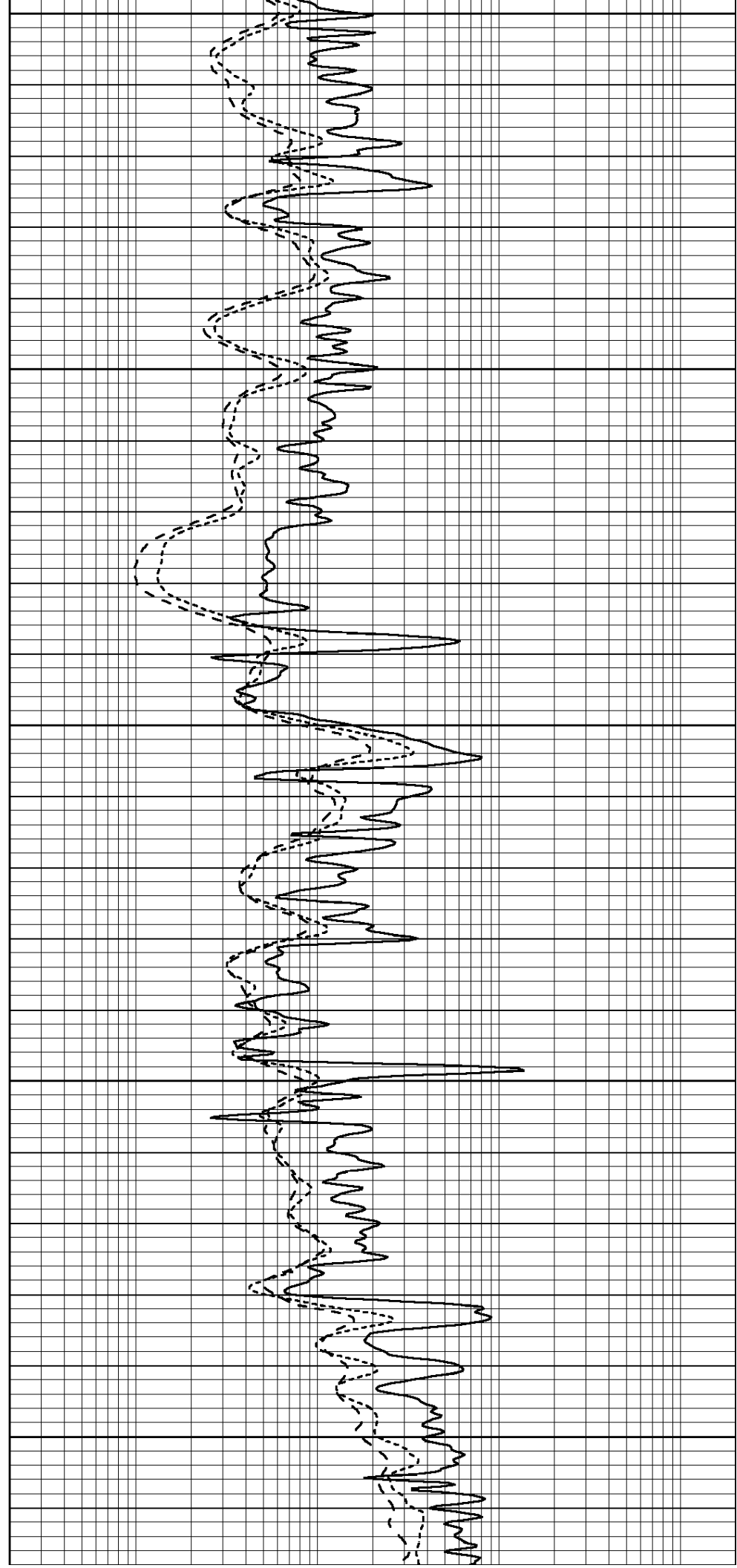
3100

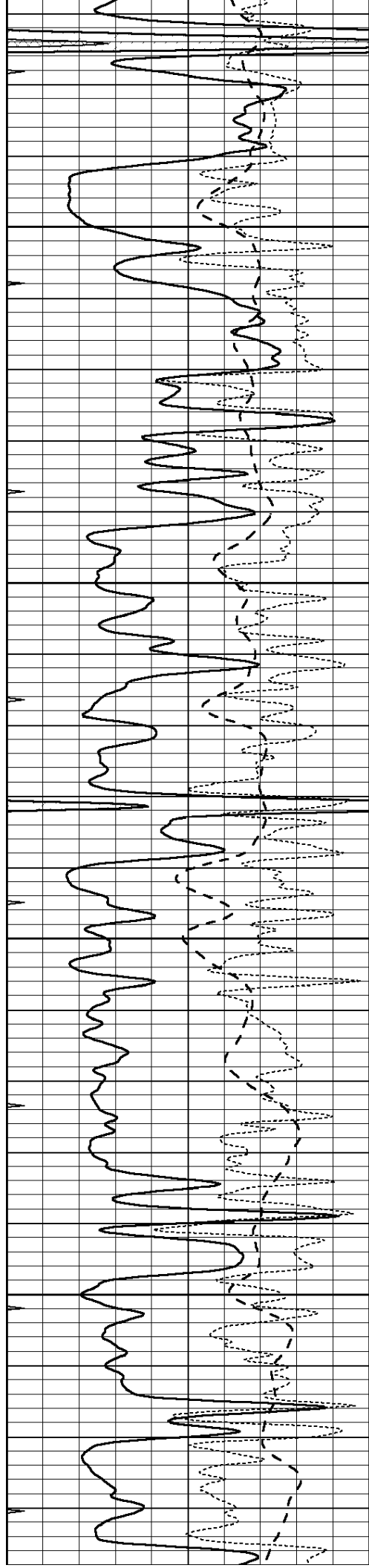
3150

3200

3250

3300



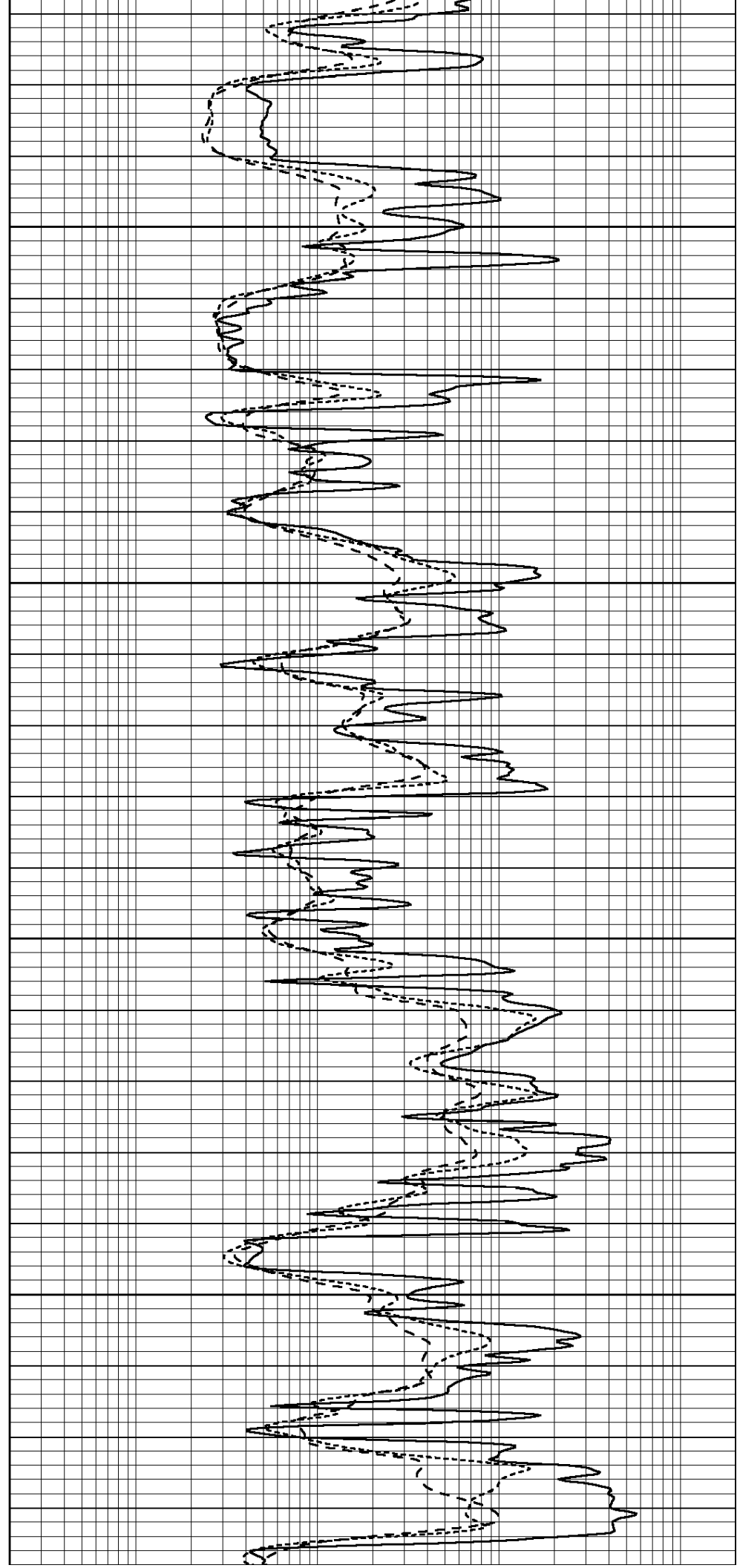


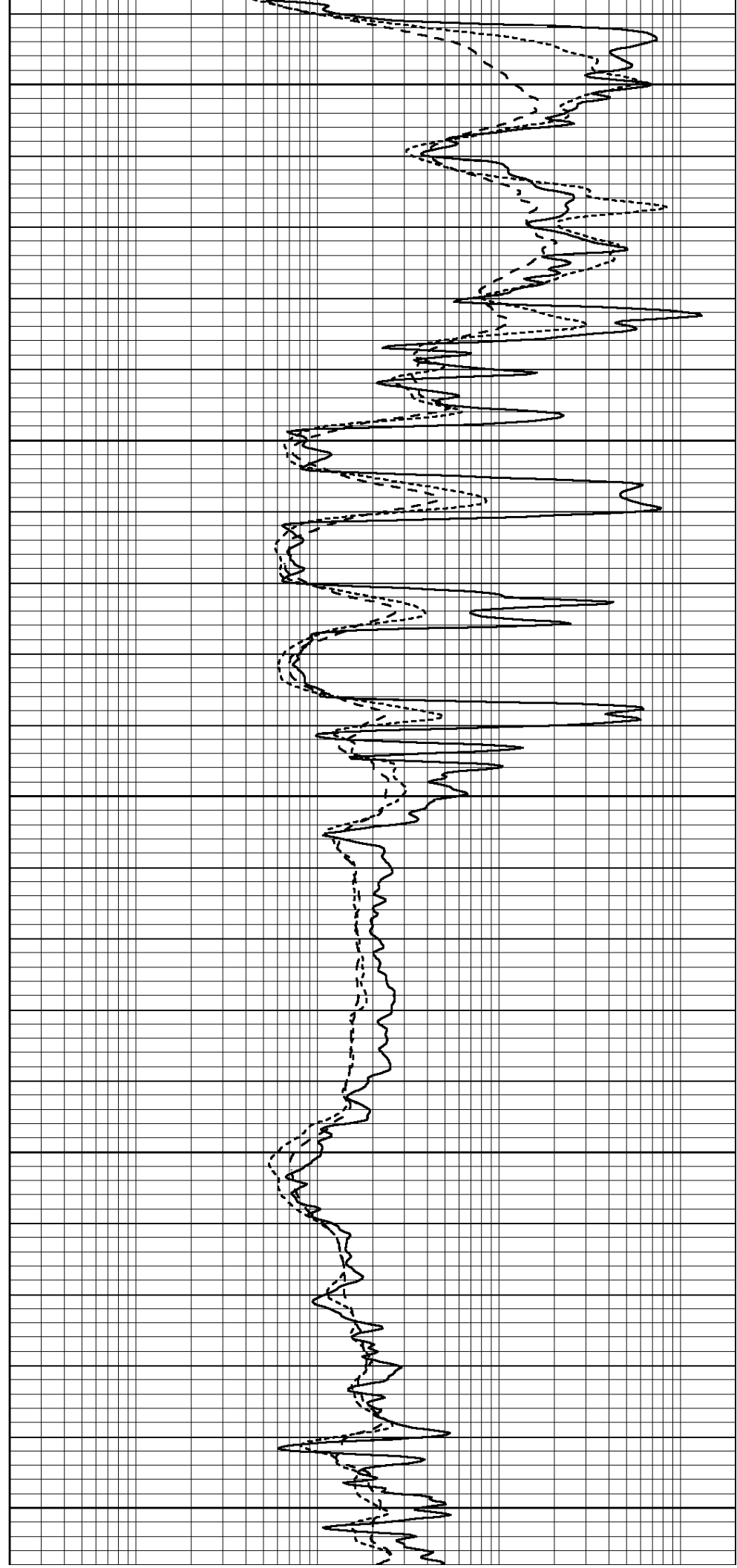
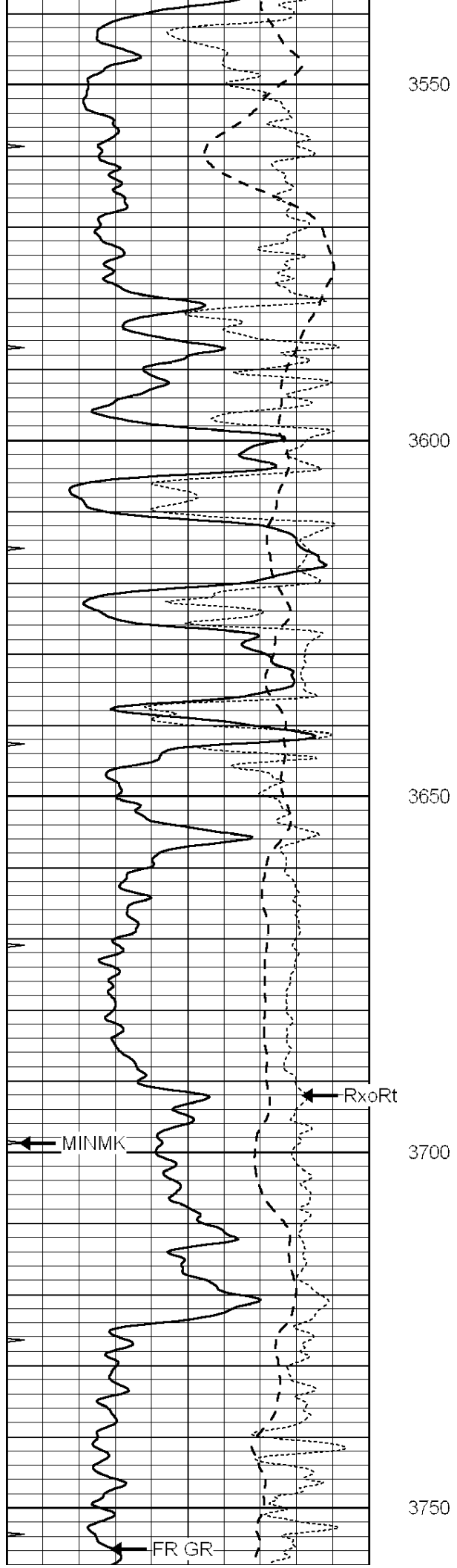
3350

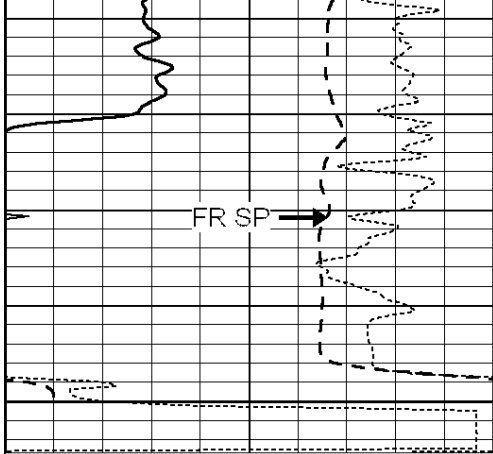
3400

3450

3500

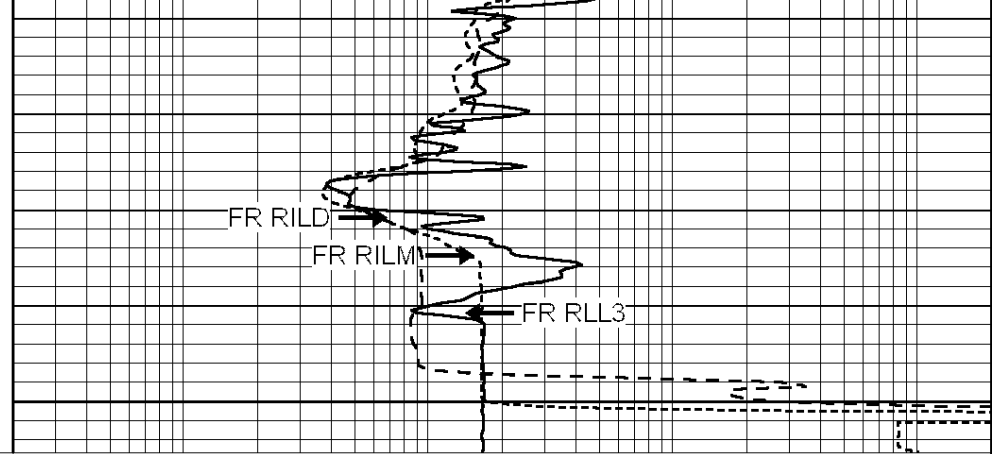






--- TD ---
3800

0	GAMMA RAY (GAPI)	150
-100	SP (mV)	100
-250	RxoRt	50
0	MINMK	20



0.2	RLL3 (Ohm-m)	2000
0.2	DEEP INDUCTION (Ohm-m)	2000
0.2	MEDIUM INDUCTION (Ohm-m)	2000



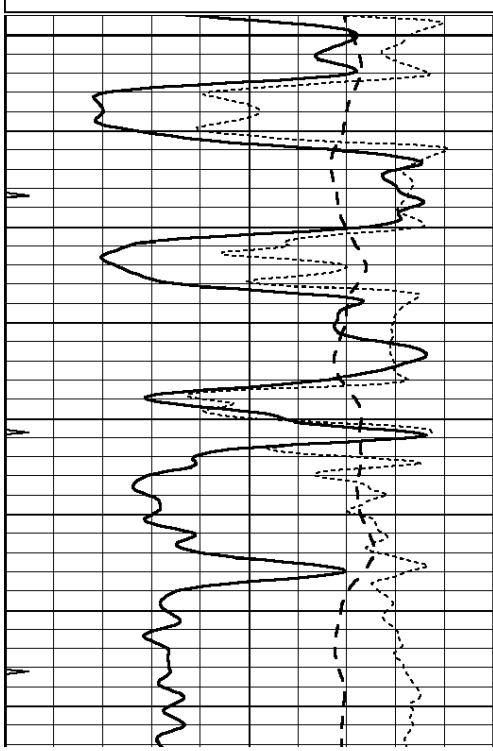
SUPERIOR
Hays,
Kansas

REPEAT SECTION

Database File: 006931ddn.db
 Dataset Pathname: pass2.A
 Presentation Format: dil
 Dataset Creation: Mon Jun 06 14:29:48 2011
 Charted by: Depth in Feet scaled 1:240

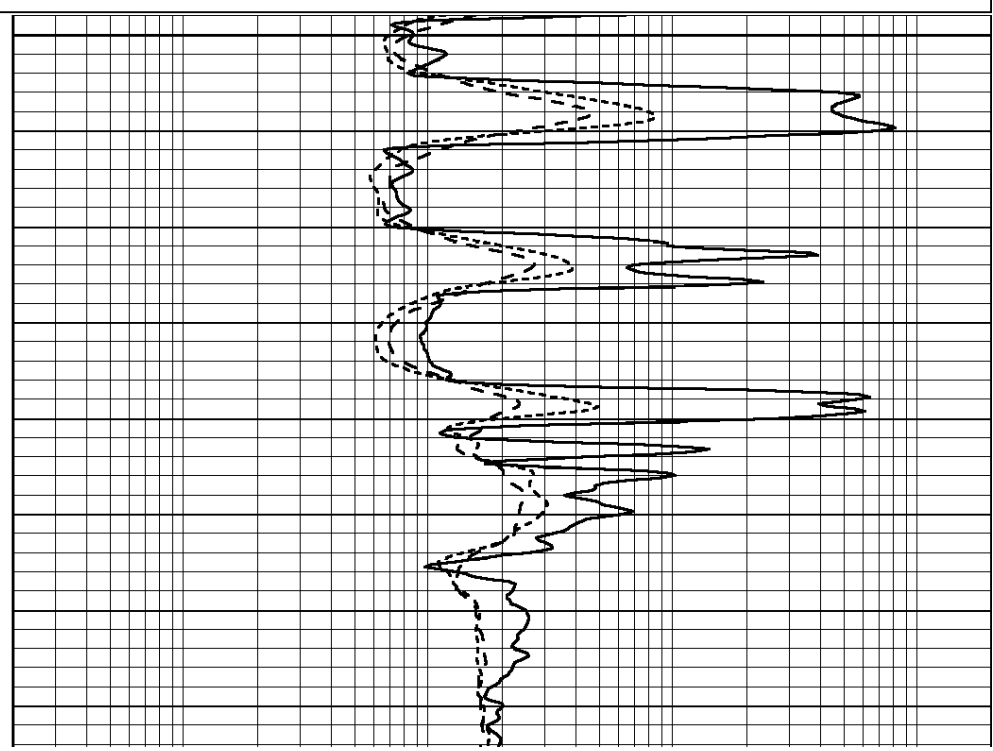
0	GAMMA RAY (GAPI)	150
-100	SP (mV)	100
-250	RxoRt	50
0	MINMK	20

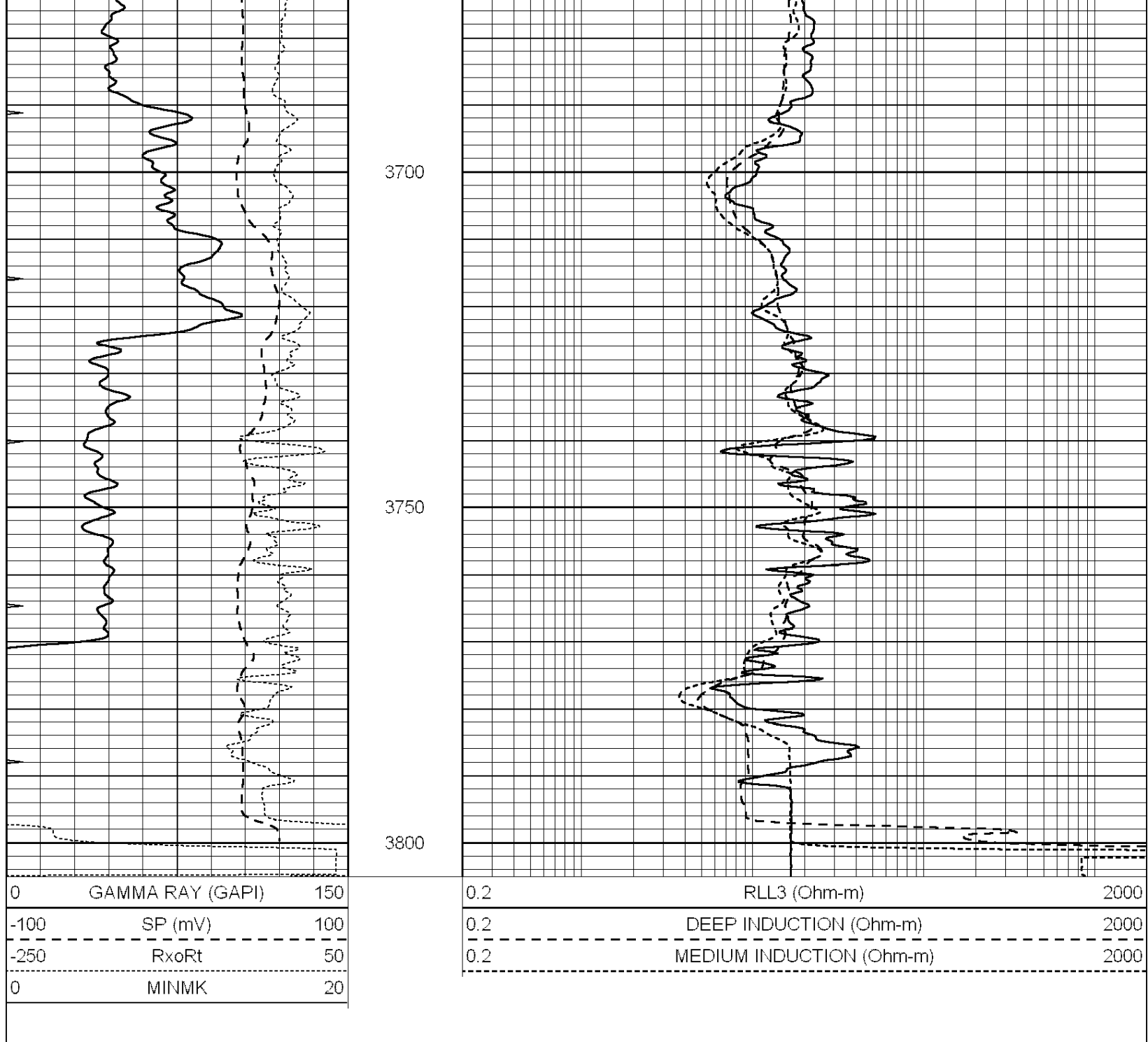
0.2	RLL3 (Ohm-m)	2000
0.2	DEEP INDUCTION (Ohm-m)	2000
0.2	MEDIUM INDUCTION (Ohm-m)	2000



3600

3650





Calibration Report

Database File: 006931ddn.db
 Dataset Pathname: pass3.A
 Dataset Creation: Mon Jun 06 14:13:27 2011

Dual Induction Calibration Report

Serial-Model: DIL5-GEAR
 Performed: Mon Jun 06 13:31:02 2011

Loop:	Readings			References			Results	
	Air	Loop		Air	Loop		m	b
Deep	0.004	0.654	V	0.000	400.000	mmho/m	820.000	-3.000
Medium	-0.005	0.737	V	0.000	462.500	mmho/m	500.000	-9.000
Internal:	Zero	Cal		Zero	Cal		m	b

Deep	0.006	0.655	V	0.000	400.000	mmho/m	615.668	-3.483
Medium	0.010	0.747	V	0.000	462.500	mmho/m	627.607	-6.064

Compensated Density Calibration Report

Serial-Model:	GEAR1-GEARHART
Source / Verifier:	147 / 147
Master Calibration Performed:	Mon Jun 06 11:57:40 2011

Master Calibration

	Density		Far Detector	Near Detector	
Magnesium	1.710	g/cc	1243.76	629.14	cps
Aluminum	2.590	g/cc	282.16	435.01	cps
Spine Angle = 76.03			Density/Spine Ratio = 0.576		
	Size		Reading		
Small Ring	9.10	in	3.82	V	
Large Ring	14.20	in	6.37	V	

Compensated Neutron Calibration Report

Serial Number:	NUE_2I
Tool Model:	G

CALIBRATION

Detector	Readings		Target		Normalization
Short Space	1.00	cps	1.00	cps	1.0000
Long Space	1.00	cps	1.00	cps	1.0000

Gamma Ray Calibration Report

Serial Number:	GR5	
Tool Model:	OPEN	
Performed:	Mon Jun 06 13:12:17 2011	
Calibrator Value:	1.0	GAPI
Background Reading:	0.0	cps
Calibrator Reading:	1.0	cps
Sensitivity:	0.6700	GAPI/cps