



**SUPERIOR**  
Hays,  
Kansas

**SONIC**  
LOG

Company **DOWNING - NELSON OIL COMPANY, INC.**  
Well **FHSU #1-7**  
Field  
County **ELLIS** State **KANSAS**

Company **DOWNING-NELSON OIL CO., INC.**  
Well **FHSU #1-7**  
Field  
County **ELLIS**  
State **KANSAS**

Location: **SEC 7 TWP 14S RGE 18W**  
**855' FNL & 1845' FEL**  
API #: **15-051-26131**  
Permanent Datum **GROUND LEVEL** Elevation **2060**  
Log Measured From **KELLY BUSHING 8' A.G.L.**  
Drilling Measured From **KELLY BUSHING**  
Other Services  
**CDL/CNL**  
**DIL/MEL**  
Elevation  
K.B. **2068**  
D.F.  
G.L. **2060**

Date	6-6-11
Run Number	TWO
Depth Driller	3793
Depth Logger	3793
Bottom Logged Interval	3786
Top Log Interval	220
Casing Driller	223
Casing Logger	222
Bit Size	7.875
Type Fluid in Hole	CHEMICAL MUD
Density / Viscosity	9.2 / 58
pH / Fluid Loss	10.0 / 9.2
Source of Sample	FLOWLINE
Rm @ Meas. Temp	0.60 @ 90F
Rmf @ Meas. Temp	0.45 @ 90F
Rmc @ Meas. Temp	0.72 @ 90F
Source of Rmf / Rmc	MEASURED
Rm @ BHT	.480 @ 113F
Time Circulation Stopped	2 HOURS
Time Logger on Bottom	12:30 P.M.
Maximum Recorded Temperature	113F
Equipment Number	860
Location	HAYS, KS.
Recorded By	RUPP
Witnessed By	RON NELSON

<<< Fold Here >>>

All interpretations are opinions based on inferences from electrical or other measurements and we cannot and do not guarantee the accuracy or correctness of any interpretation, and we shall not, except in the case of gross or willful negligence on our part, be liable or responsible for any loss, costs, damages, or expenses incurred or sustained by anyone resulting from any interpretation made by any of our officers, agents or employees. These interpretations are also subject to our general terms and conditions set out in our current Price Schedule.

Comments

**SUPERIOR WELL SERVICES**  
 785-628-6395  
**THANK YOU FOR YOUR BUSINESS**  
 DIRECTIONS: EXPERIMENT STATION RD., S TO SPRING HILL RD., 1W, 1S, 1/2W, S INTO.

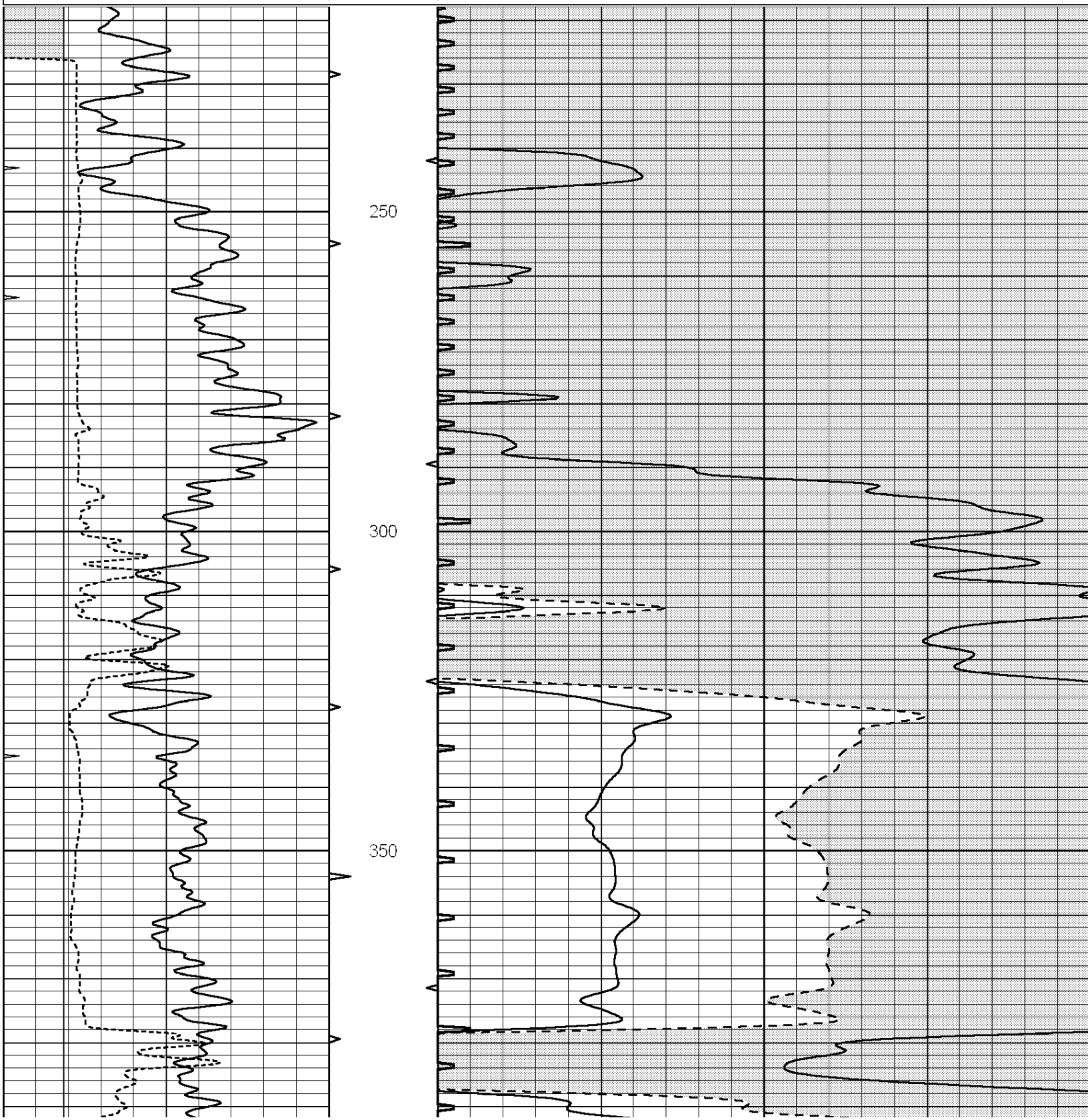


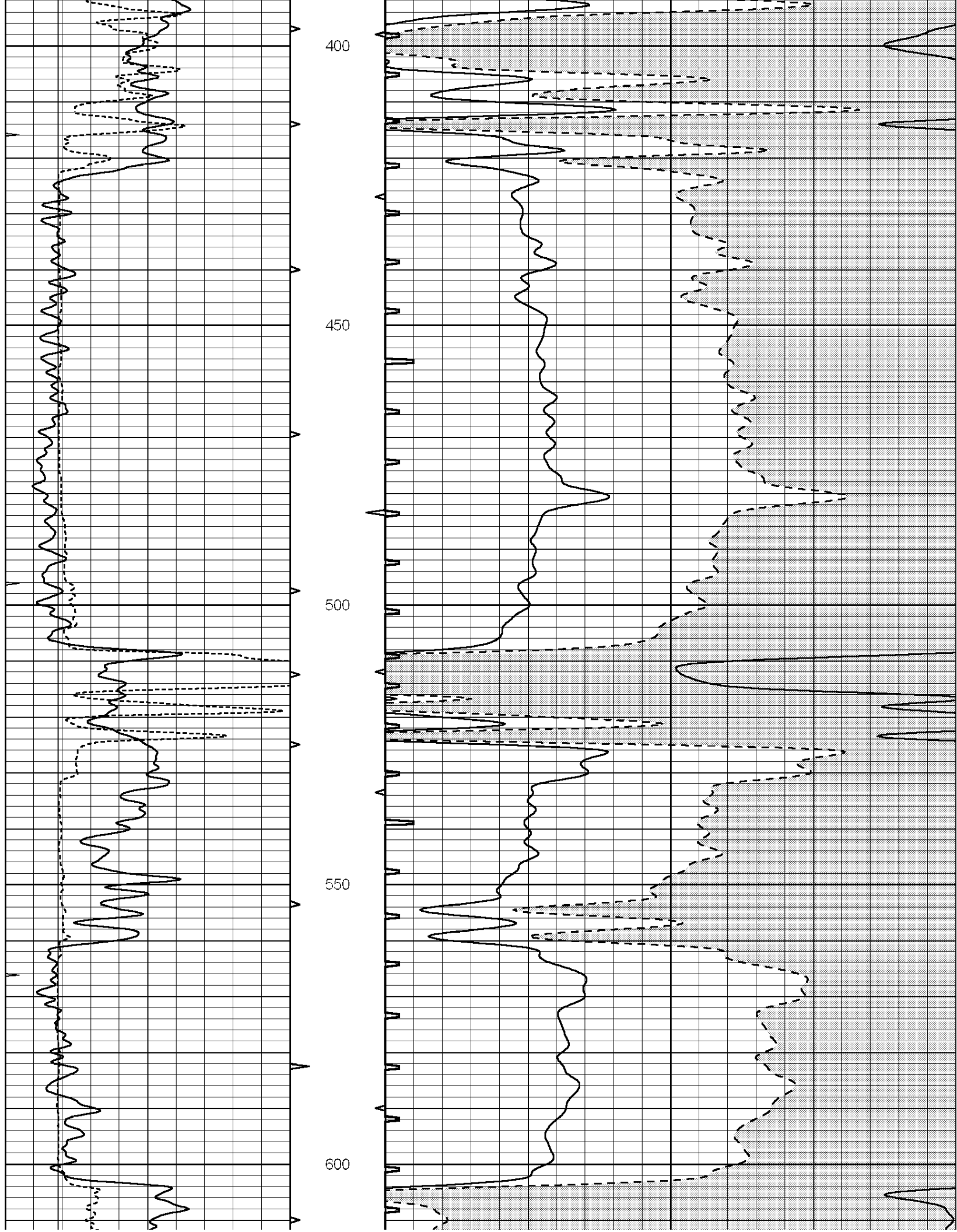
**SUPERIOR**  
Hays,  
Kansas

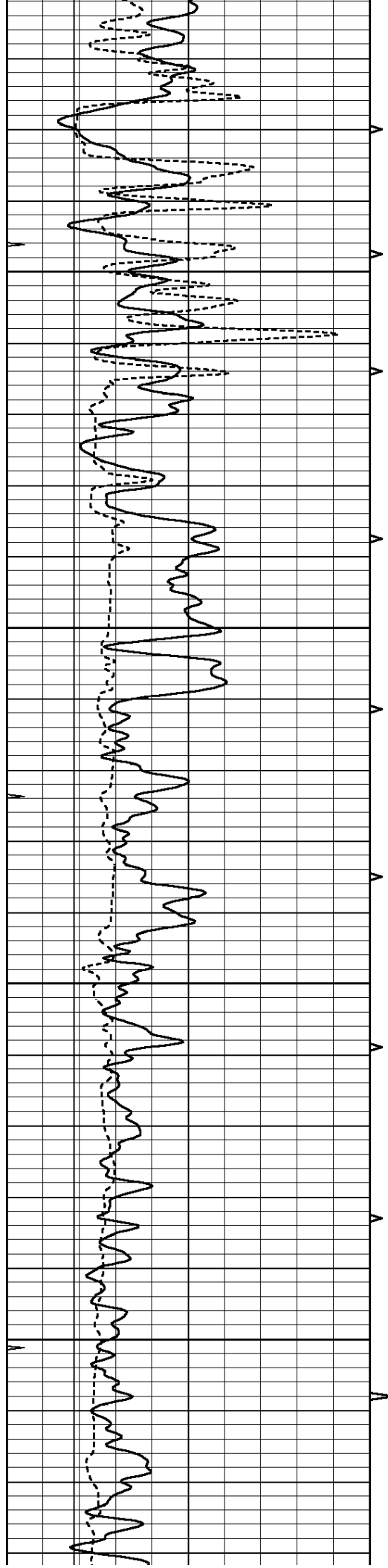
# MAIN SECTION

Database File: 006931ddn.db  
 Dataset Pathname: pass5.1  
 Presentation Format: slt  
 Dataset Creation: Mon Jun 06 16:04:18 2011 by Calc Open-Cased 090629  
 Charted by: Depth in Feet scaled 1:240

0	GAMMA RAY (GAPI)	150	ABHV	140	DELTA TIME (usec/ft)	40
6	MELCAL (in)	16	10 (ft3) 0	30	SONIC POROSITY (pu)	-10
0	MINMK	20	TBHV	0	ITT (msec)	20
			0 (ft3) 10			





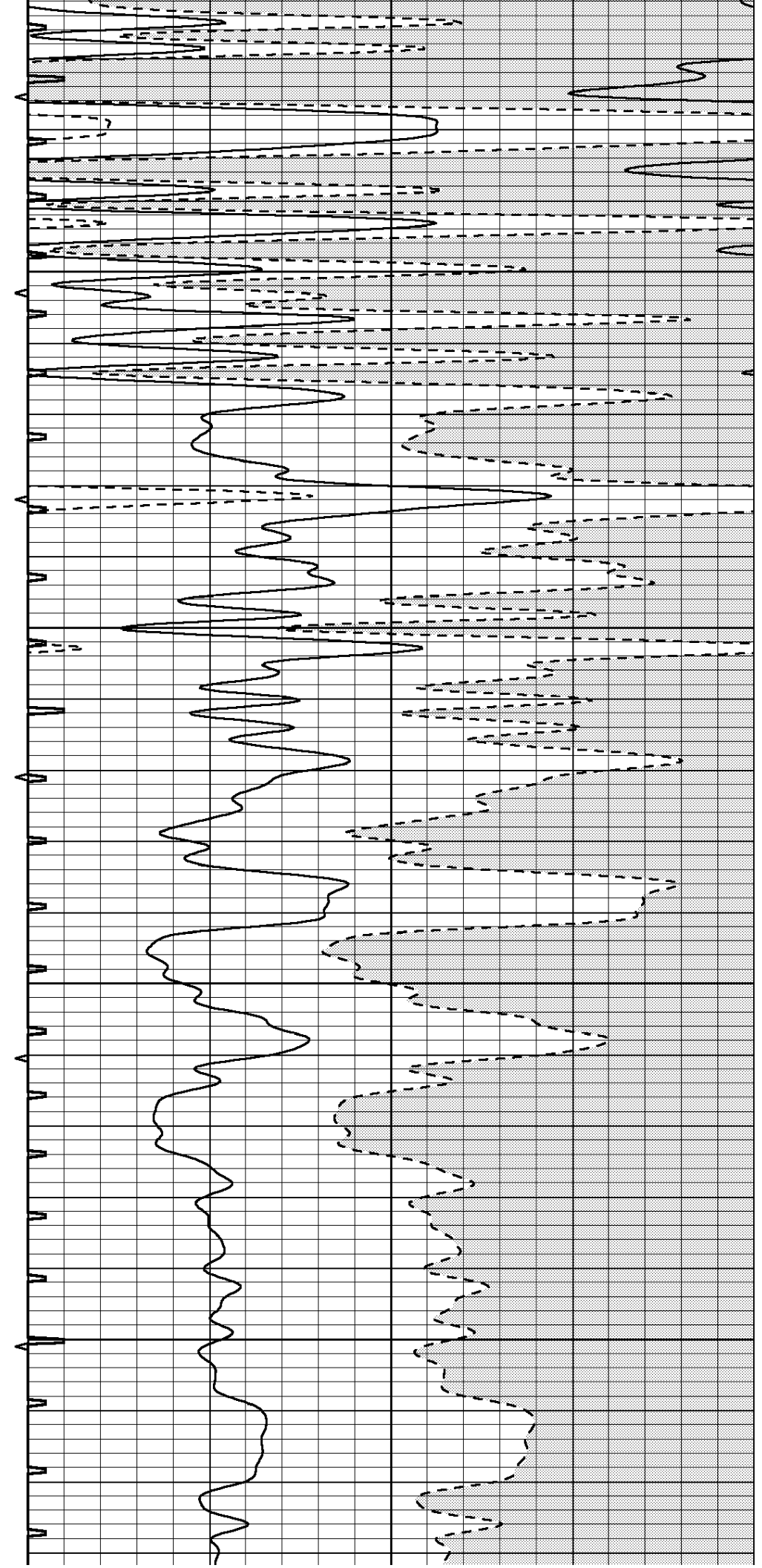


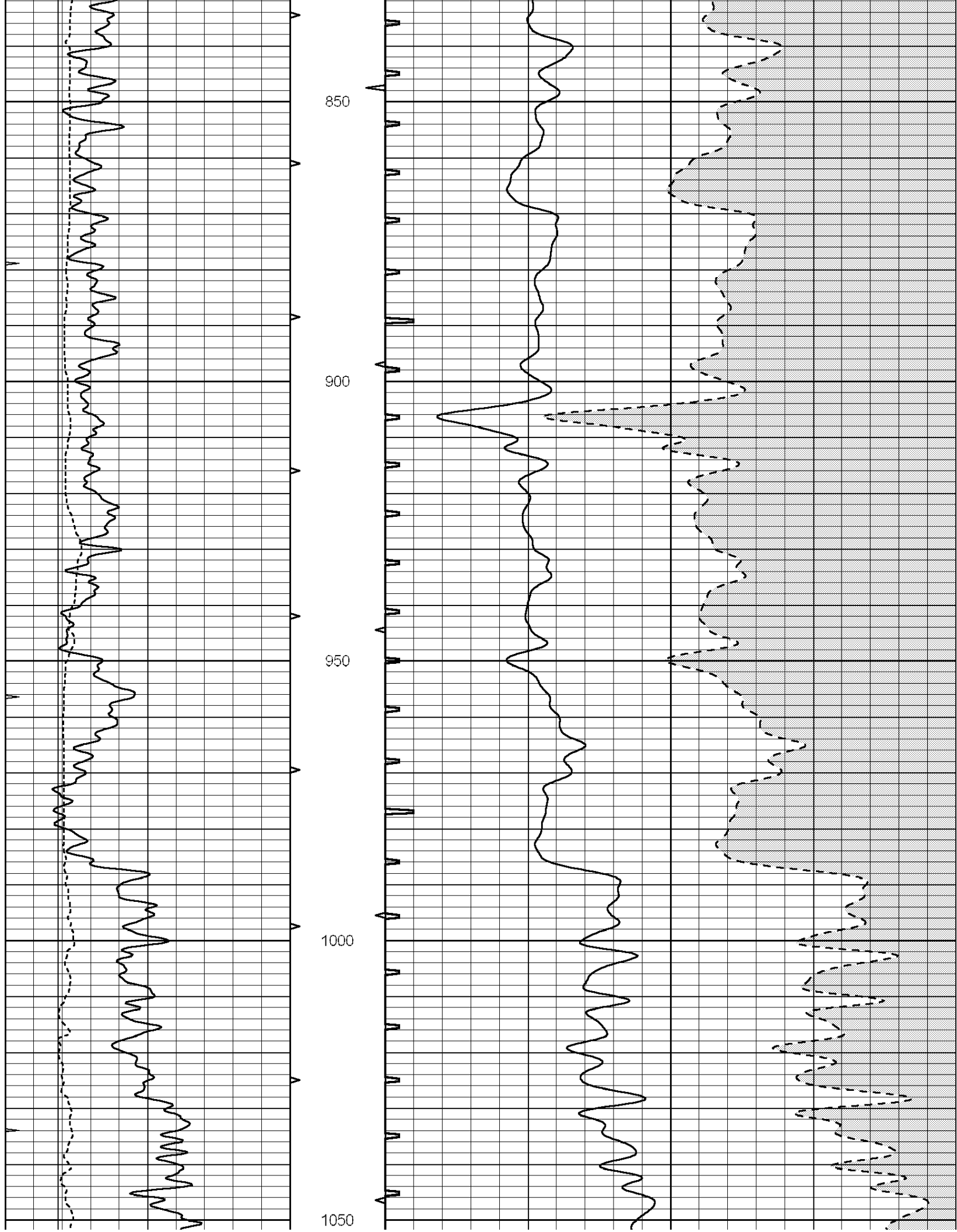
650

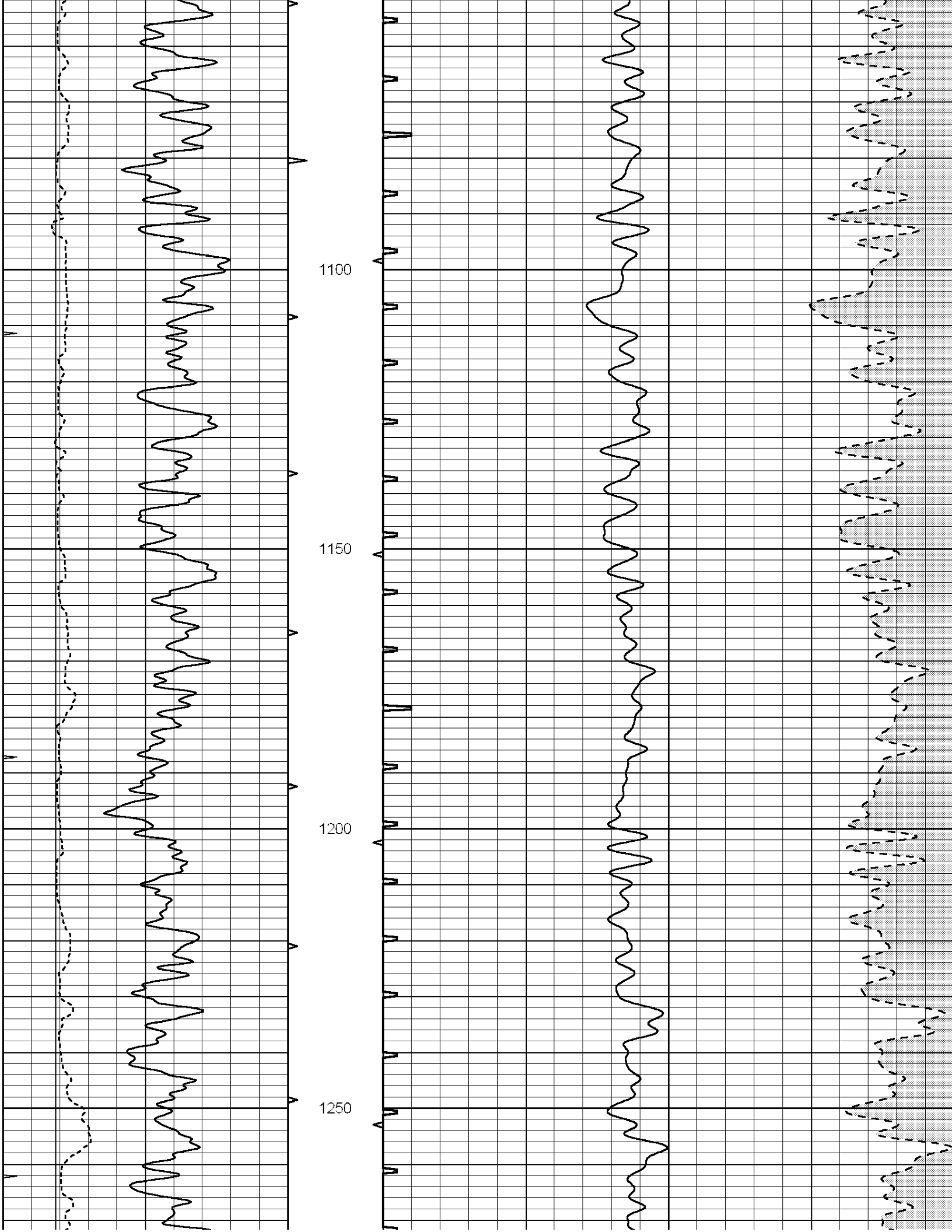
700

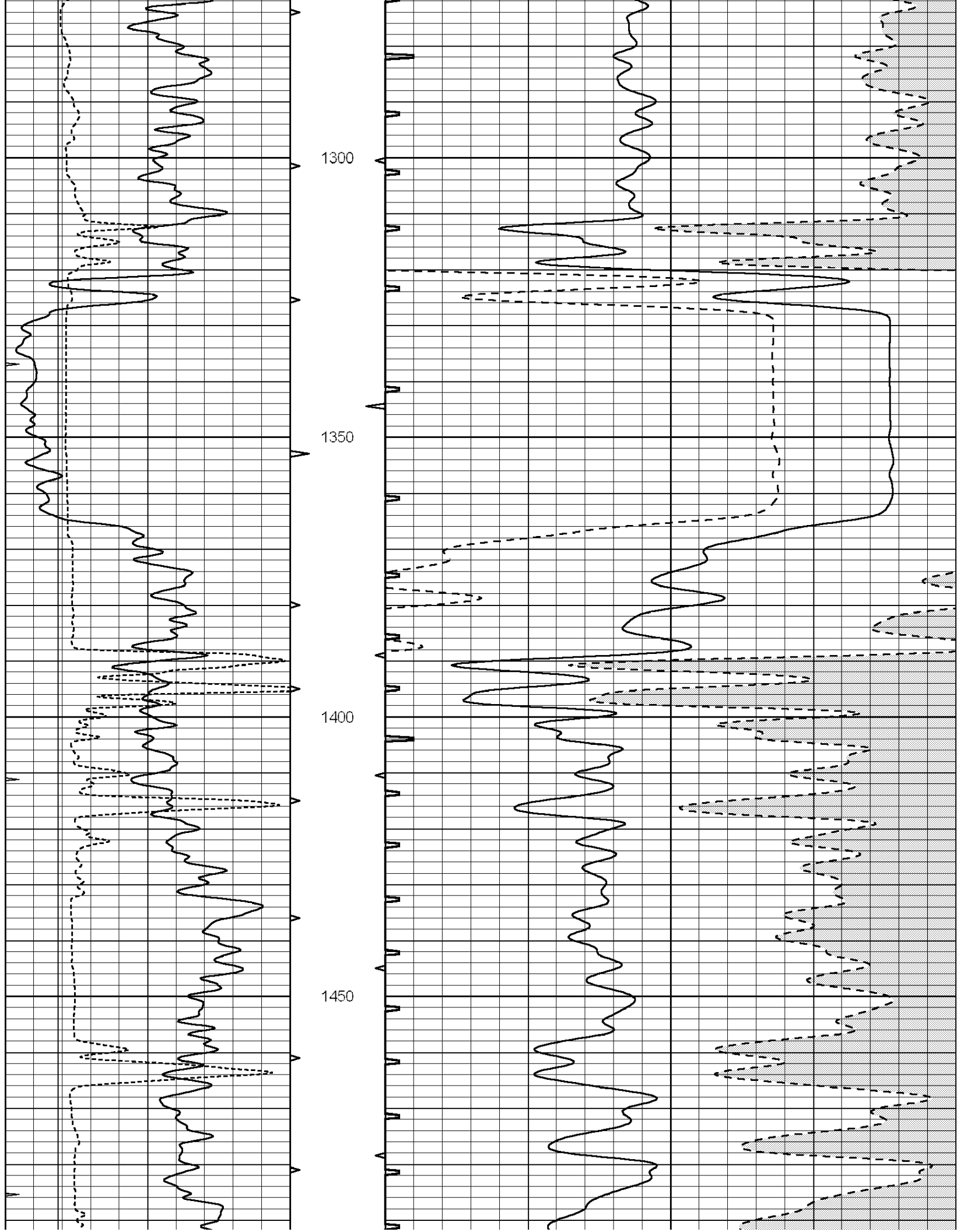
750

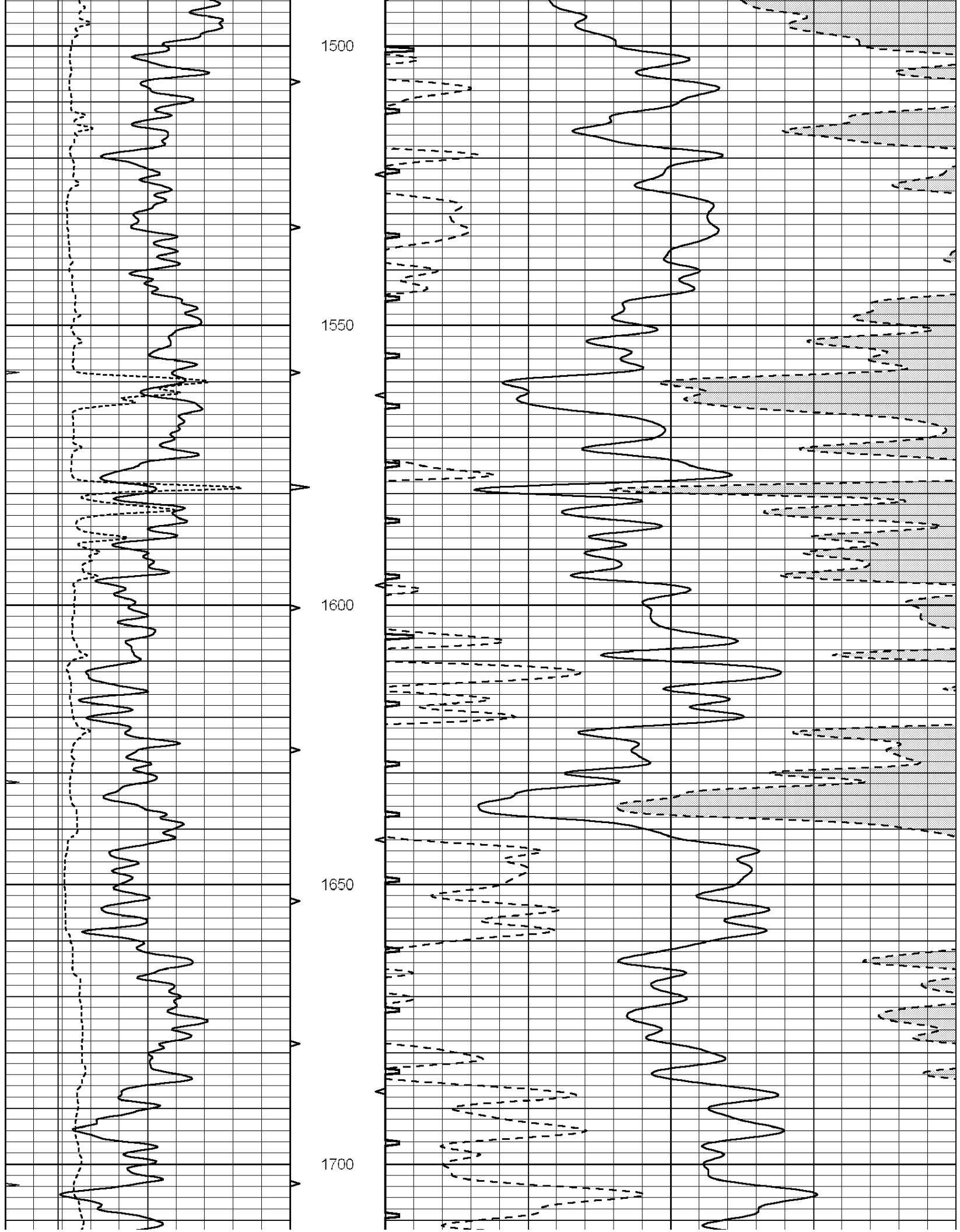
800



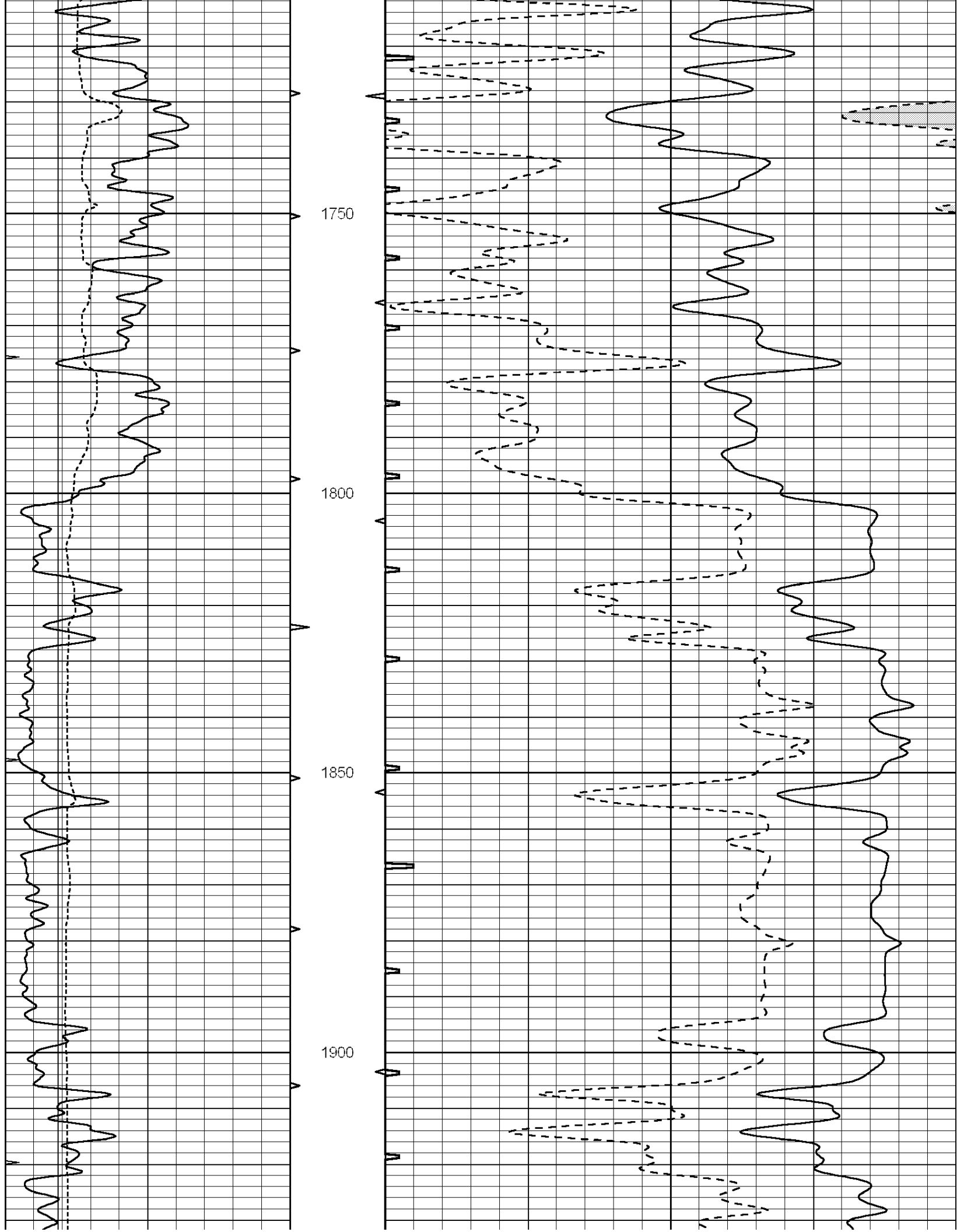


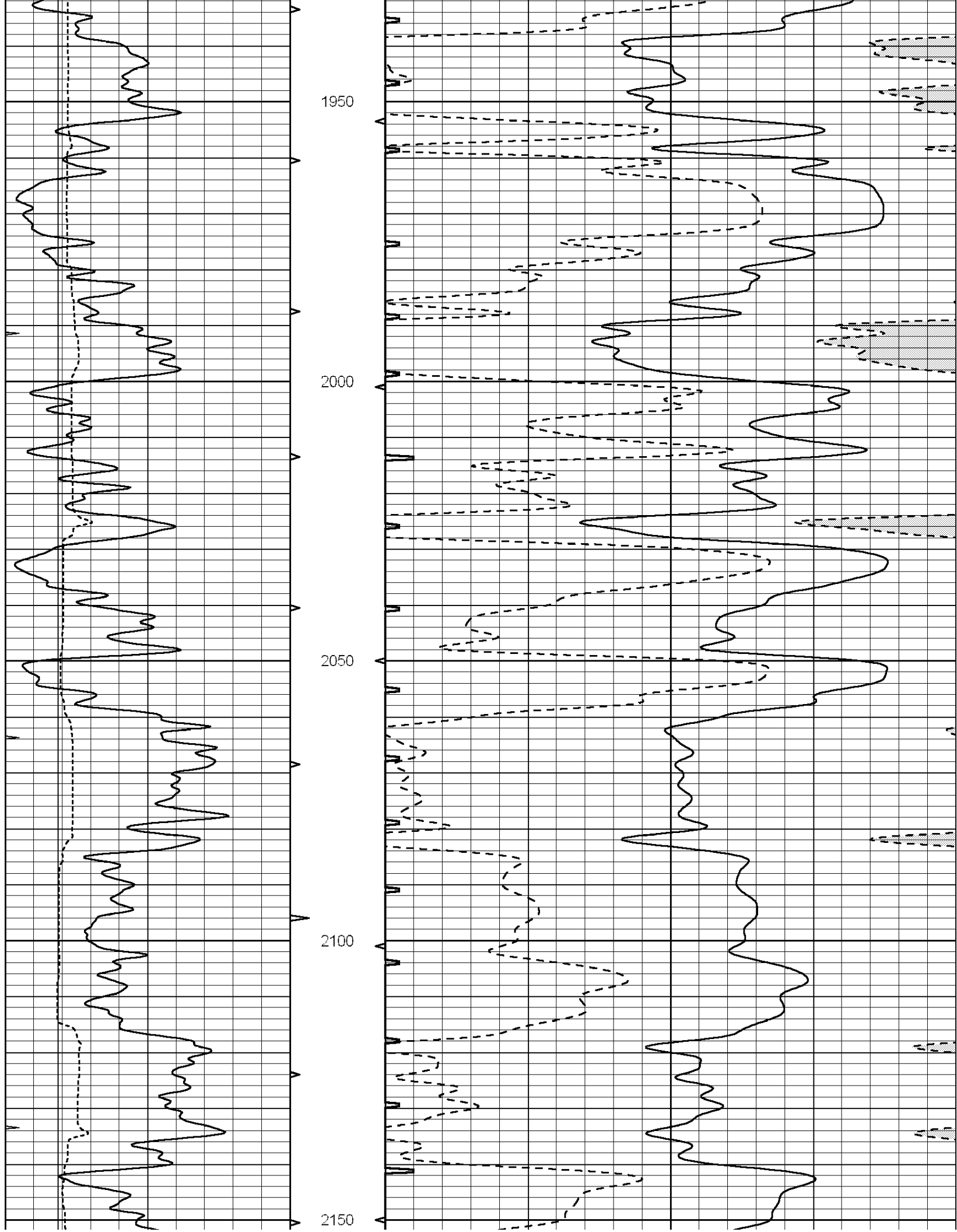


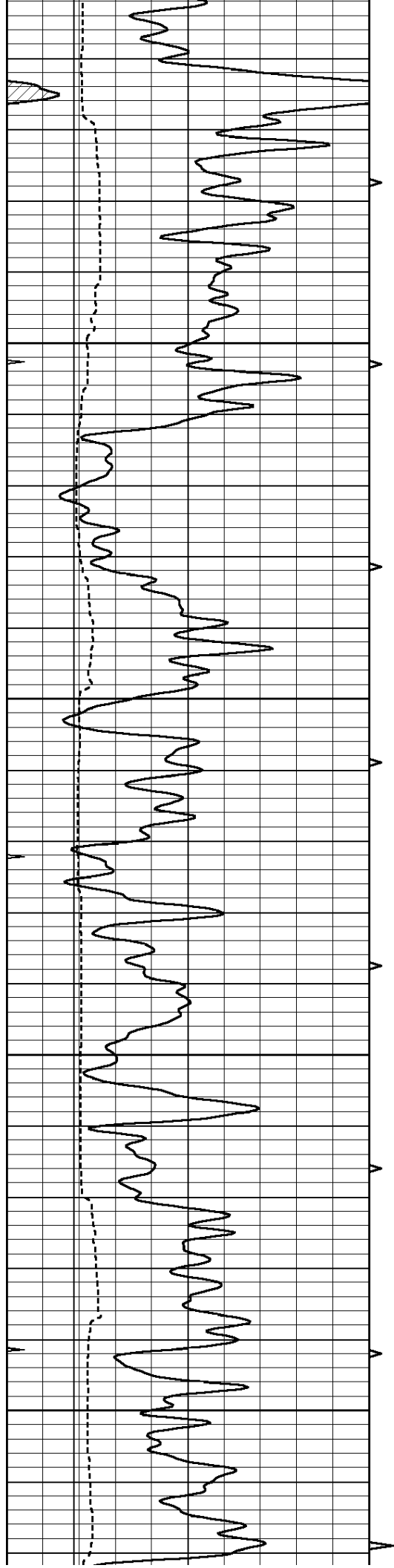










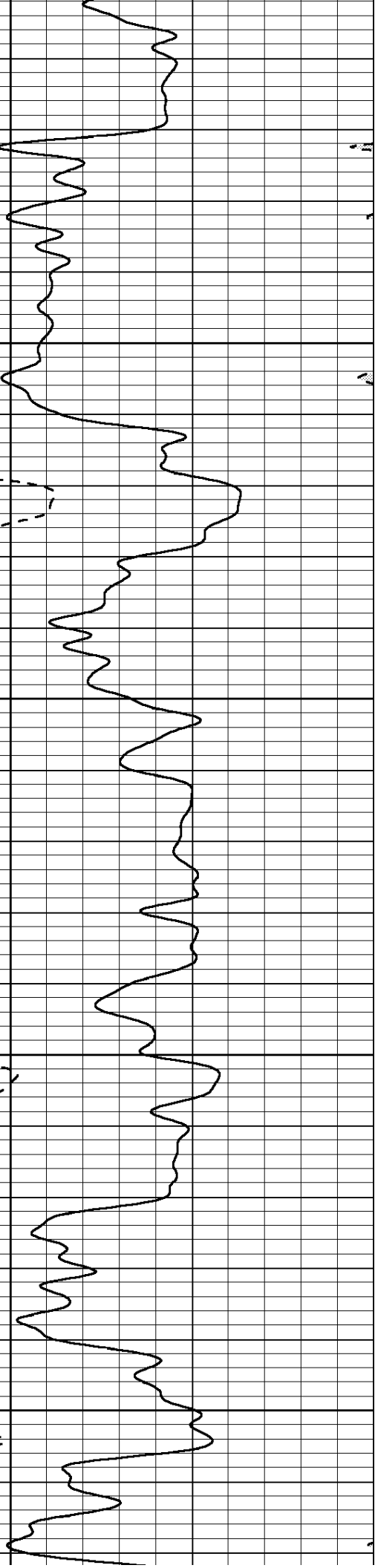
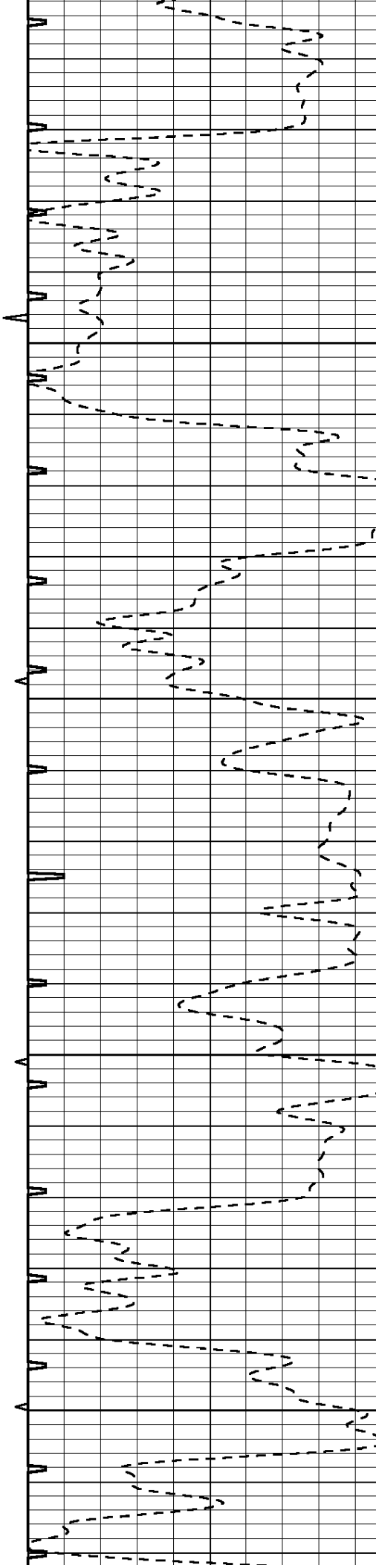


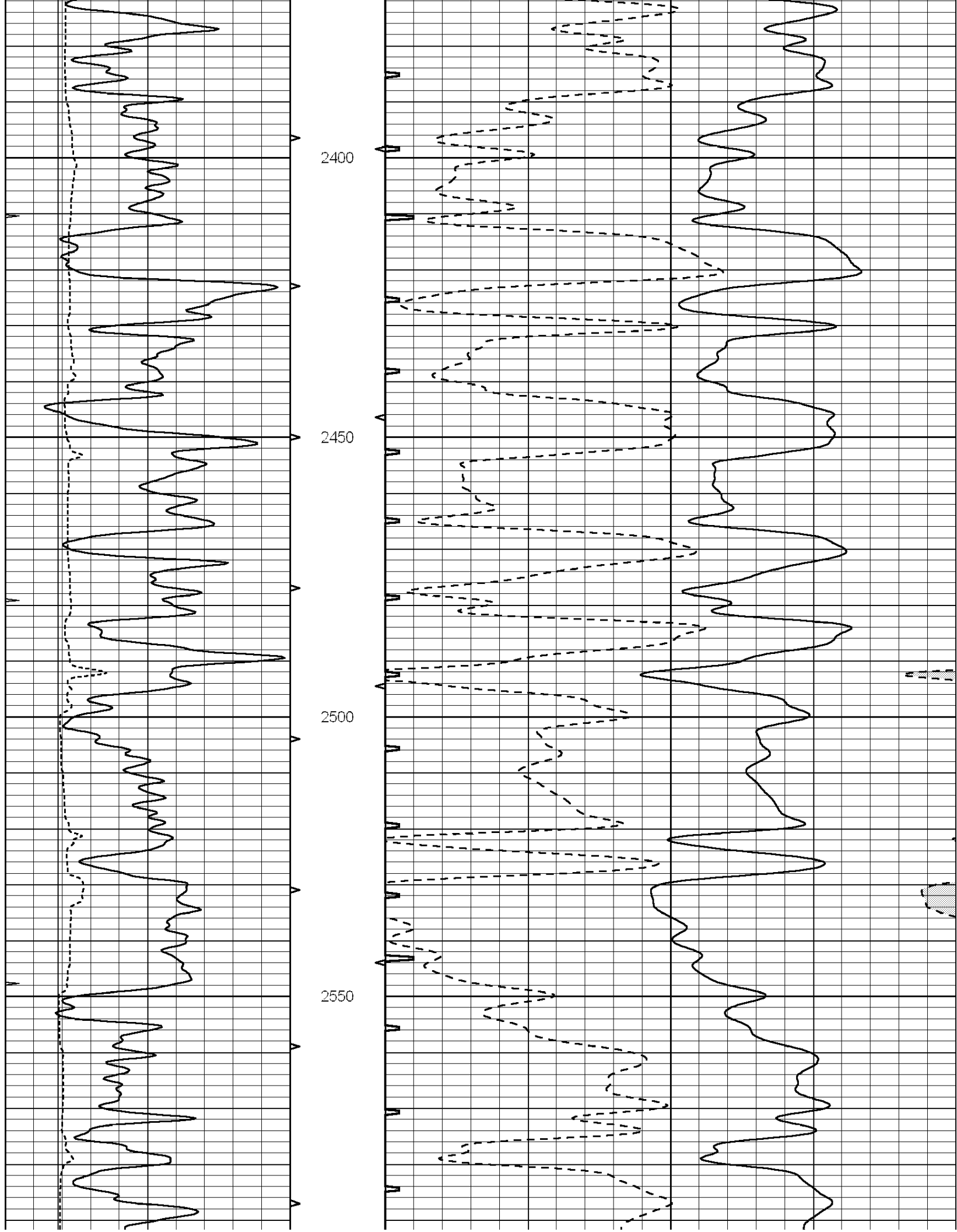
2200

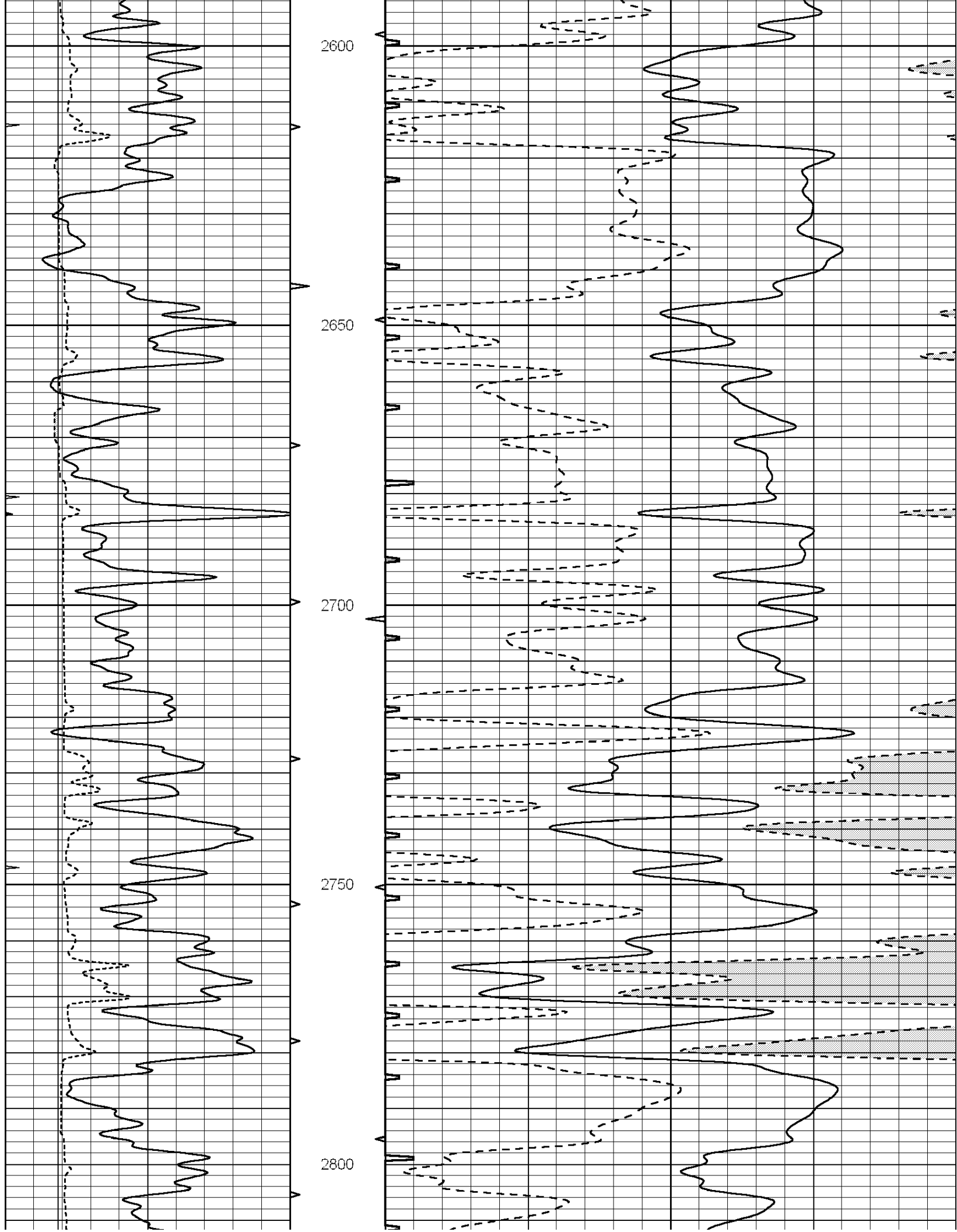
2250

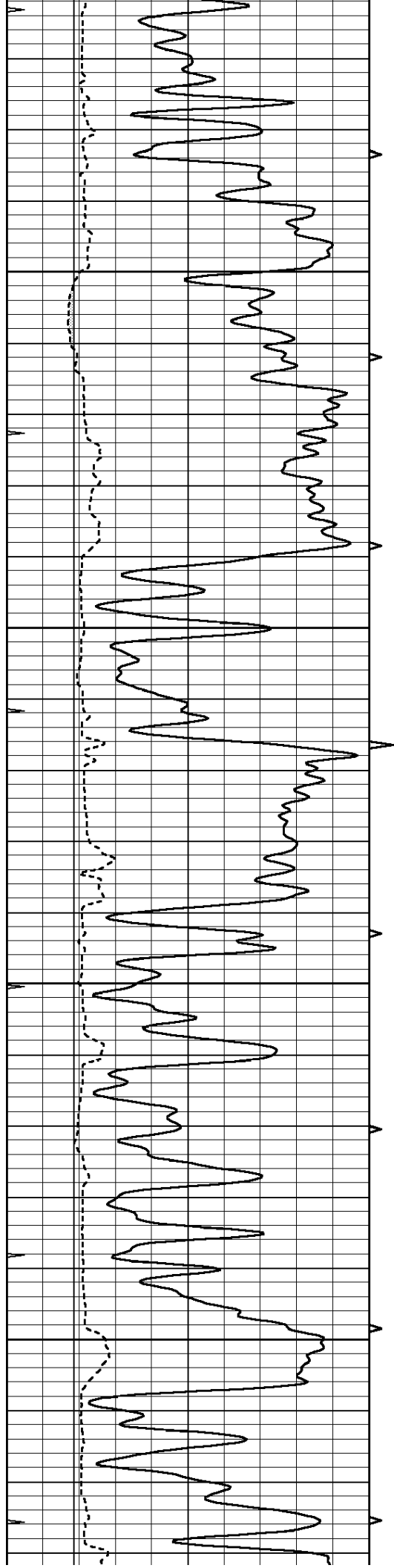
2300

2350







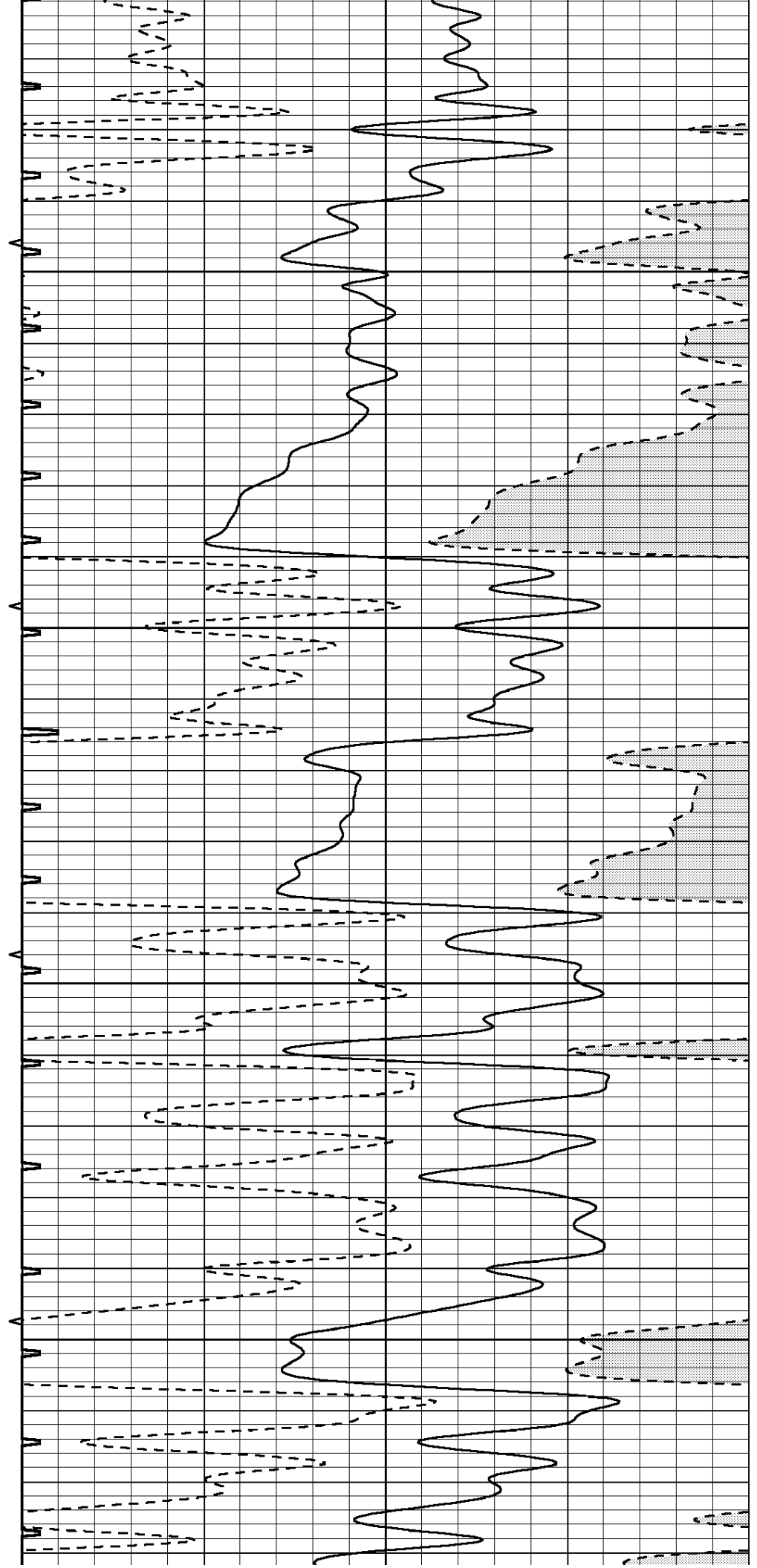


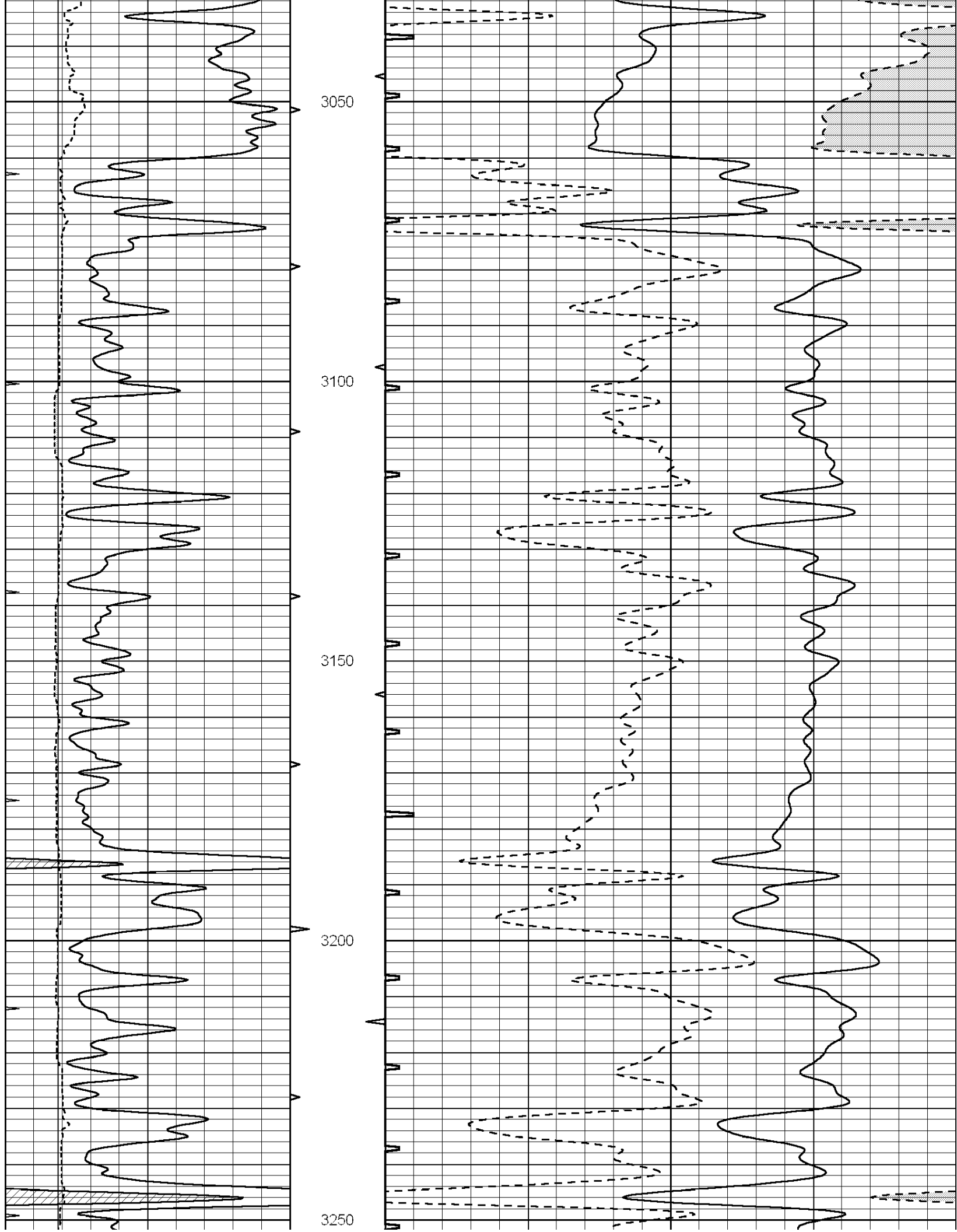
2850

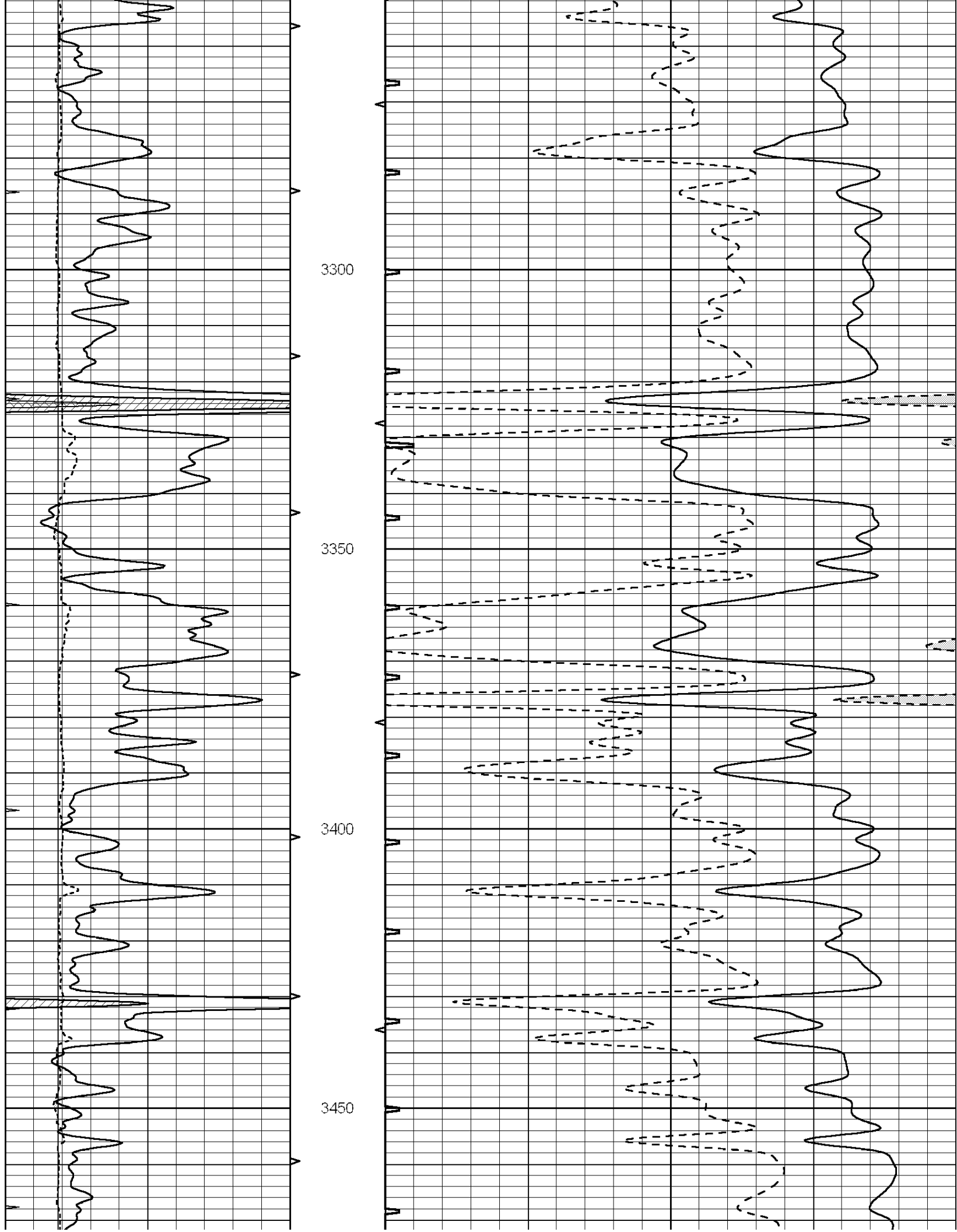
2900

2950

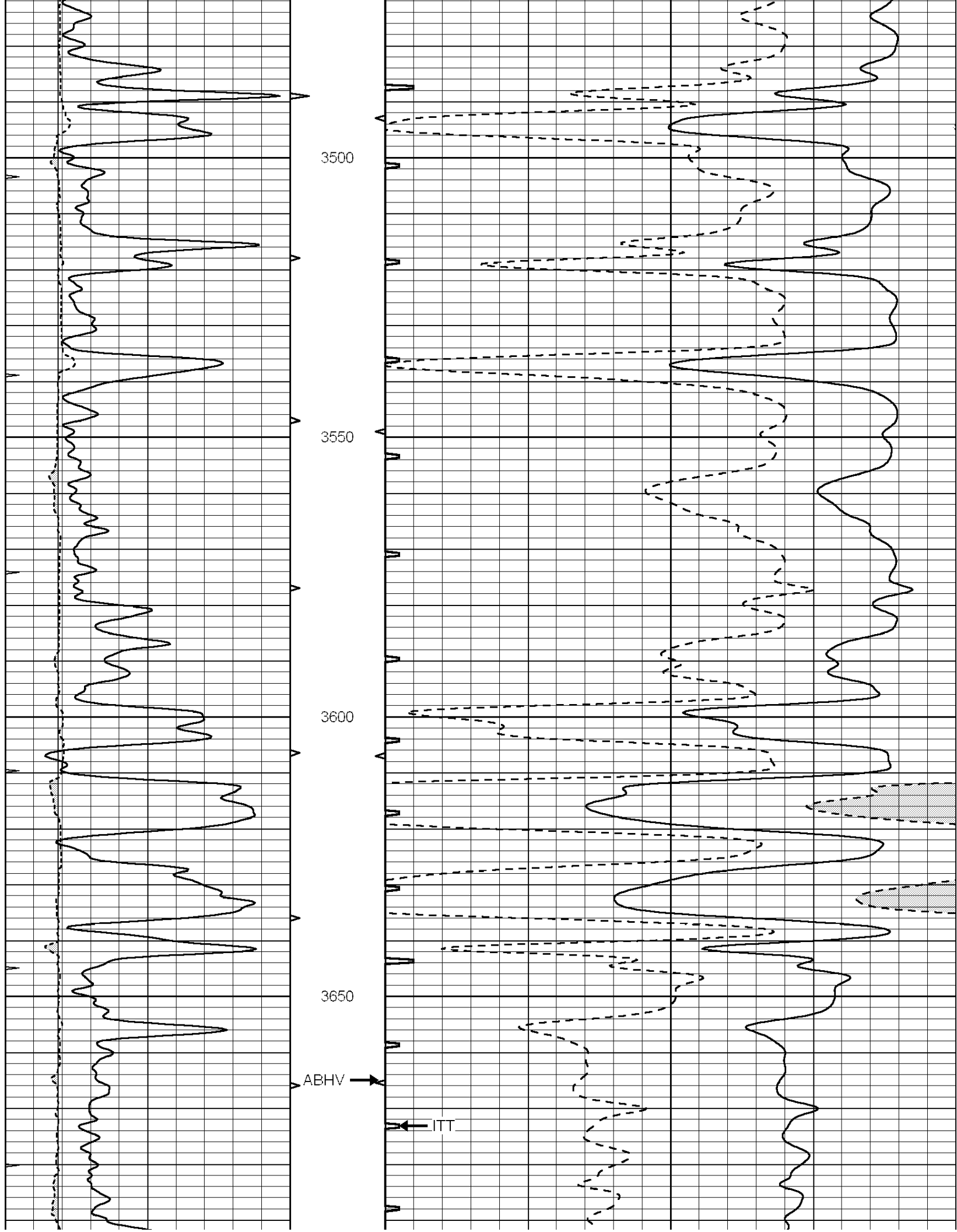
3000

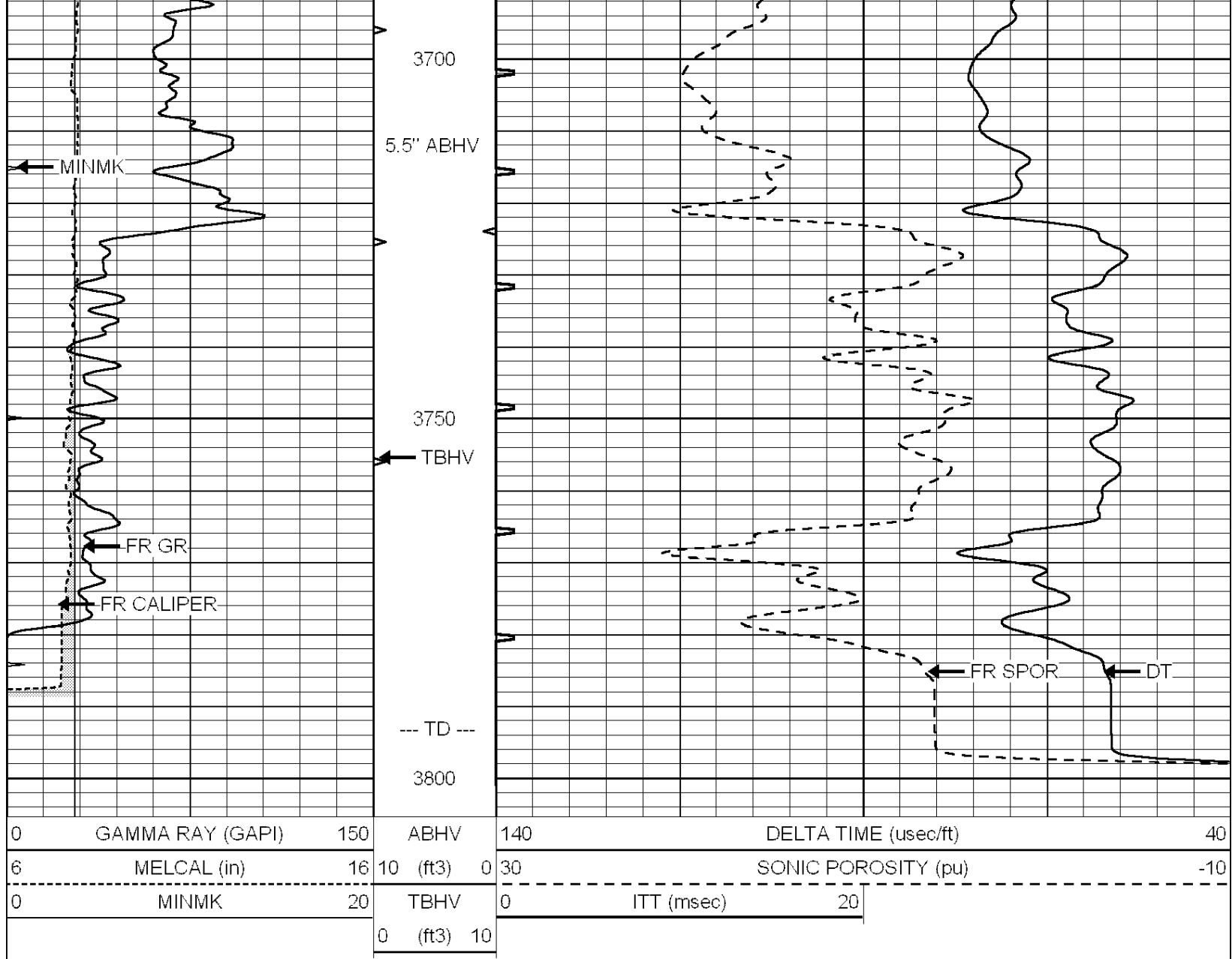










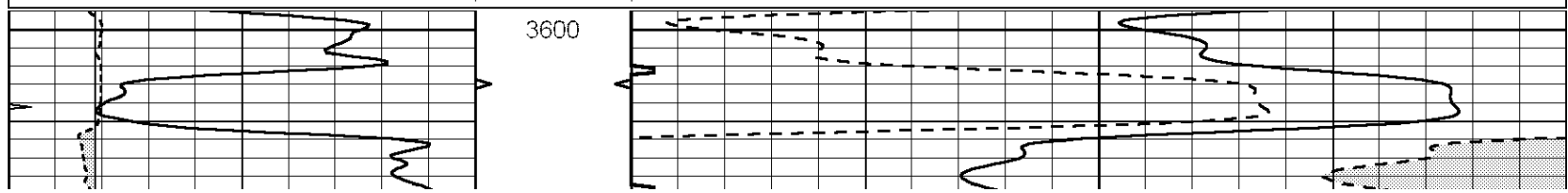


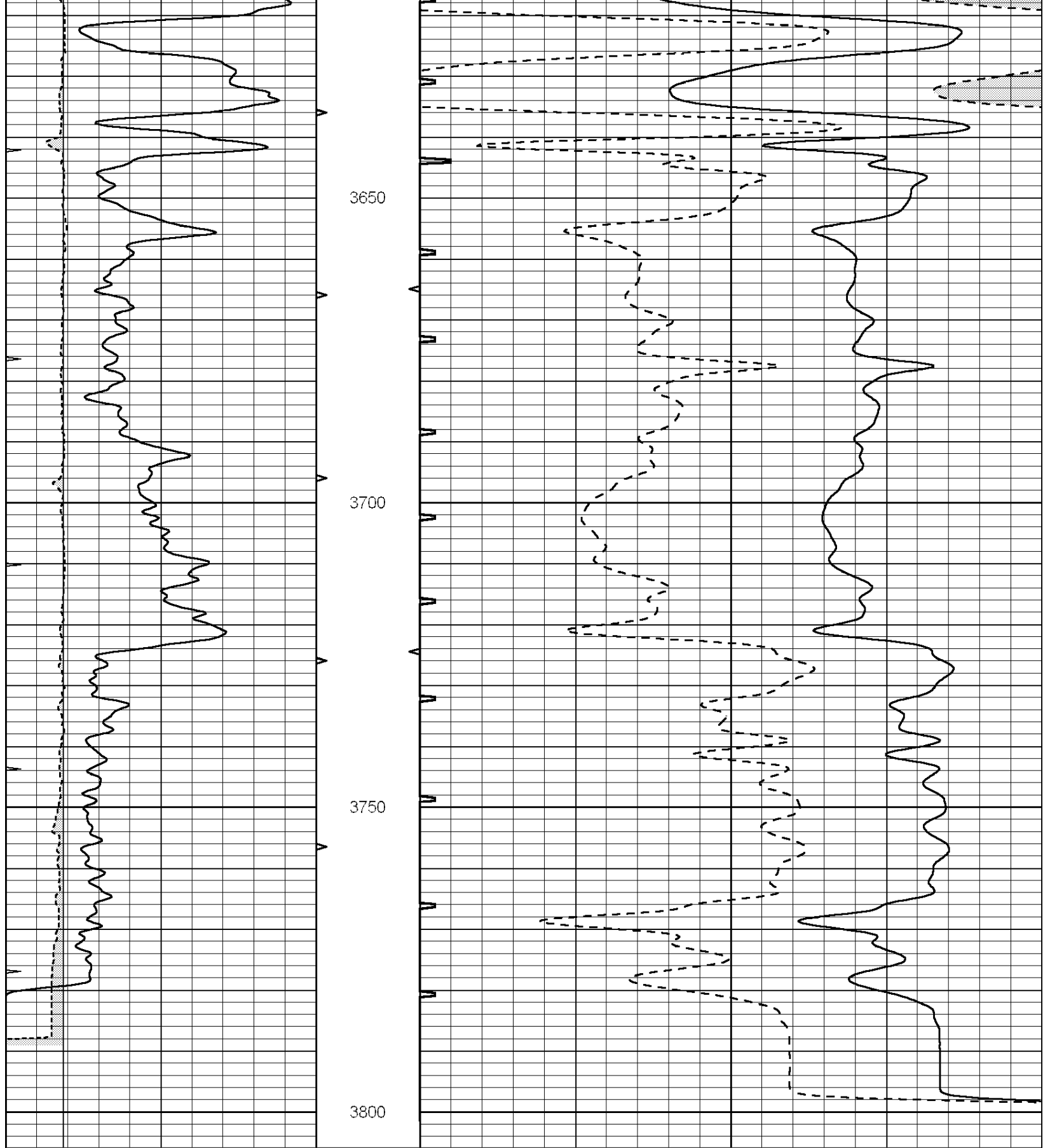
SUPERIOR  
Hays,  
Kansas

# REPEAT SECTION

Database File: 006931ddn.db  
 Dataset Pathname: pass4.1  
 Presentation Format: slt  
 Dataset Creation: Mon Jun 06 16:09:36 2011 by Calc Open-Cased 090629  
 Charted by: Depth in Feet scaled 1:240

0	GAMMA RAY (GAPI)	150	ABHV	140	DELTA TIME (usec/ft)	40	
6	MELCAL (in)	16	10 (ft3)	0	30	SONIC POROSITY (pu)	-10
0	MINMK	20	TBHV	0	ITT (msec)	20	
			0 (ft3)	10			





0	GAMMA RAY (GAPI)	150	ABHV	140	DELTA TIME (usec/ft)	40
6	MELCAL (in)	16	10 (ft3)	0	SONIC POROSITY (pu)	-10
0	MINMK	20	TBHV	0	ITT (msec)	20
			0 (ft3)	10		