



**SUPERIOR
Hays,
Kansas**

**COMPENSATED
DENSITY / NEUTRON
LOG**

Company **DOWNING - NELSON OIL COMPANY, INC.**
Well **FHSU #1-7**
Field
County **ELLIS** State **KANSAS**

Company **DOWNING-NELSON OIL CO., INC.**
Well **FHSU #1-7**
Field
County **ELLIS**
State **KANSAS**

Location: **API # : 15-051-26131**
855' FNL & 1845' FEL
SEC 7 TWP 14S RGE 18W
Permanent Datum **GROUND LEVEL** Elevation **2060**
Log Measured From **KELLY BUSHING 8' A.G.L.**
Drilling Measured From **KELLY BUSHING**
Other Services
DIL
SONIC/MEL
Elevation
K.B. 2068
D.F.
G.L. 2060

Date	6-6-11
Run Number	ONE
Depth Driller	3793
Depth Logger	3793
Bottom Logged Interval	3769
Top Log Interval	3000
Casing Driller	223
Casing Logger	222
Bit Size	7.875
Type Fluid in Hole	CHEMICAL MUD
Density / Viscosity	9.2 / 58
pH / Fluid Loss	10.0 / 9.2
Source of Sample	FLOWLINE
Rm @ Meas. Temp	0.60 @ 90F
Rmf @ Meas. Temp	0.45 @ 90F
Rmc @ Meas. Temp	0.72 @ 90F
Source of Rmf / Rmc	MEASURED
Rm @ BHT	.480 @ 113F
Time Circulation Stopped	2 HOURS
Time Logger on Bottom	12:30 P.M.
Maximum Recorded Temperature	113F
Equipment Number	860
Location	HAYS, KS.
Recorded By	RUPP
Witnessed By	RON NELSON

<<< Fold Here >>>

All interpretations are opinions based on inferences from electrical or other measurements and we cannot and do not guarantee the accuracy or correctness of any interpretation, and we shall not, except in the case of gross or willful negligence on our part, be liable or responsible for any loss, costs, damages, or expenses incurred or sustained by anyone resulting from any interpretation made by any of our officers, agents or employees. These interpretations are also subject to our general terms and conditions set out in our current Price Schedule.

Comments

SUPERIOR WELL SERVICES
 785-628-6395
THANK YOU FOR YOUR BUSINESS
 DIRECTIONS: EXPERIMENT STATION RD., S TO SPRING HILL RD., 1W, 1S, 1/2W, S INTO.

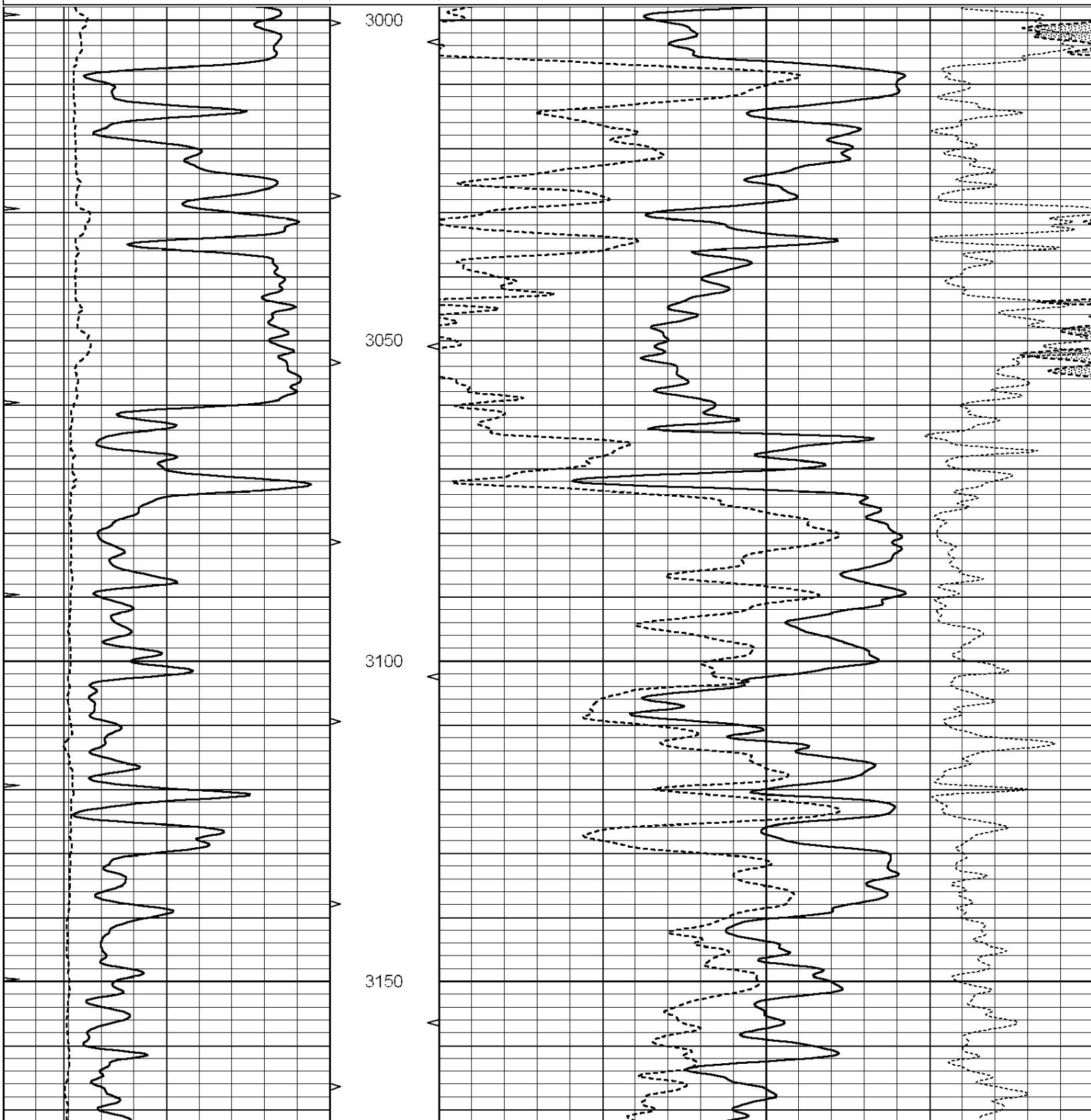


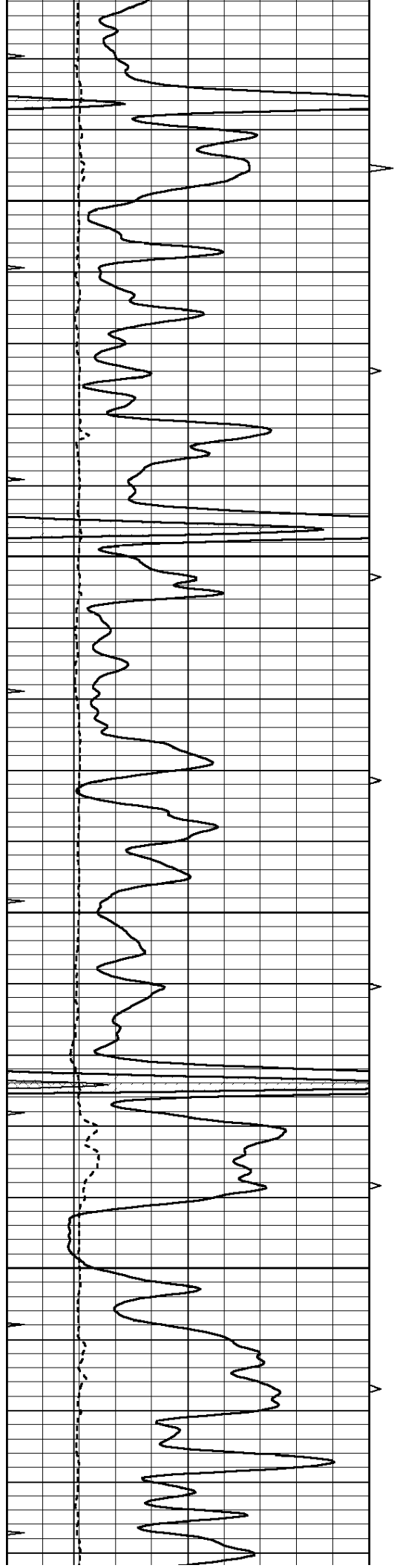
**SUPERIOR
Hays,
Kansas**

MAIN SECTION

Database File: 006931ddn.db
 Dataset Pathname: pass3.A
 Presentation Format: den_neu
 Dataset Creation: Mon Jun 06 14:13:27 2011
 Charted by: Depth in Feet scaled 1:240

0	GAMMA RAY (GAPI)	150	ABHV	30	COMPENSATED DENSITY (pu)	-10
6	CALIPER (in)	16	10 (ft3)	0 30	COMPENSATED NEUTRON (pu)	-10
0	MINMK	20	TBHV		-0.25 CORRECTION (g/cc)	0.25
			0 (ft3)	10		



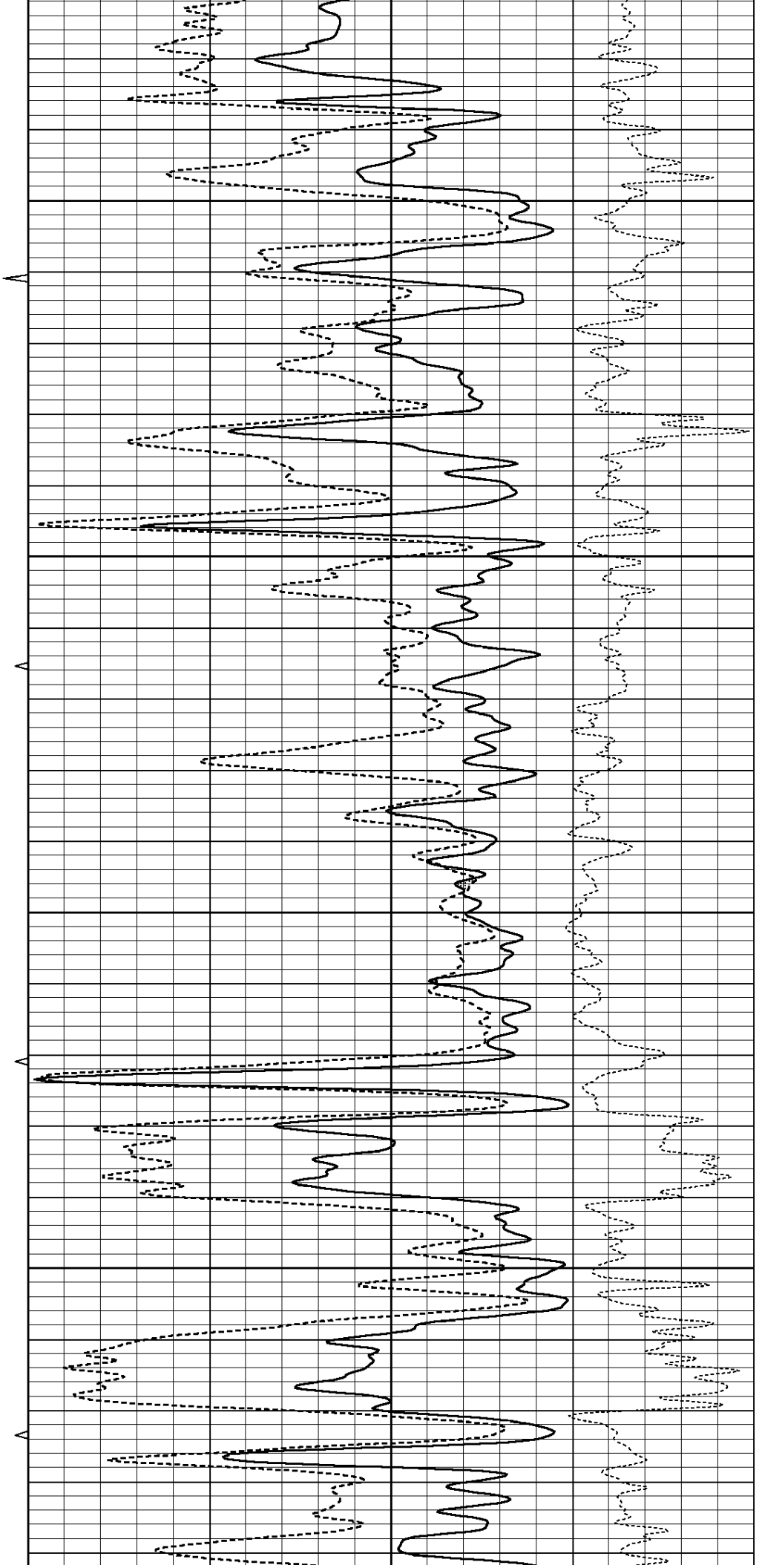


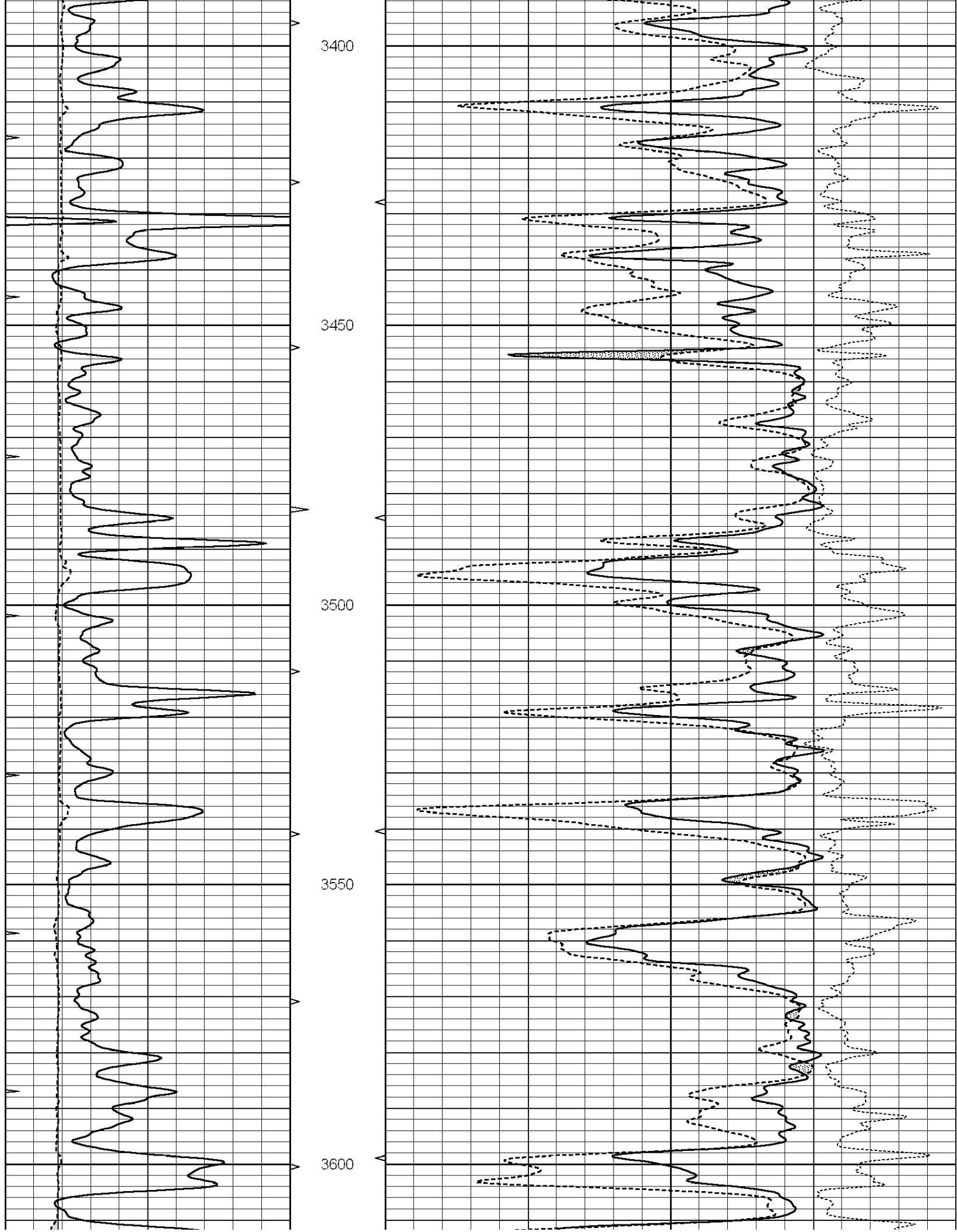
3200

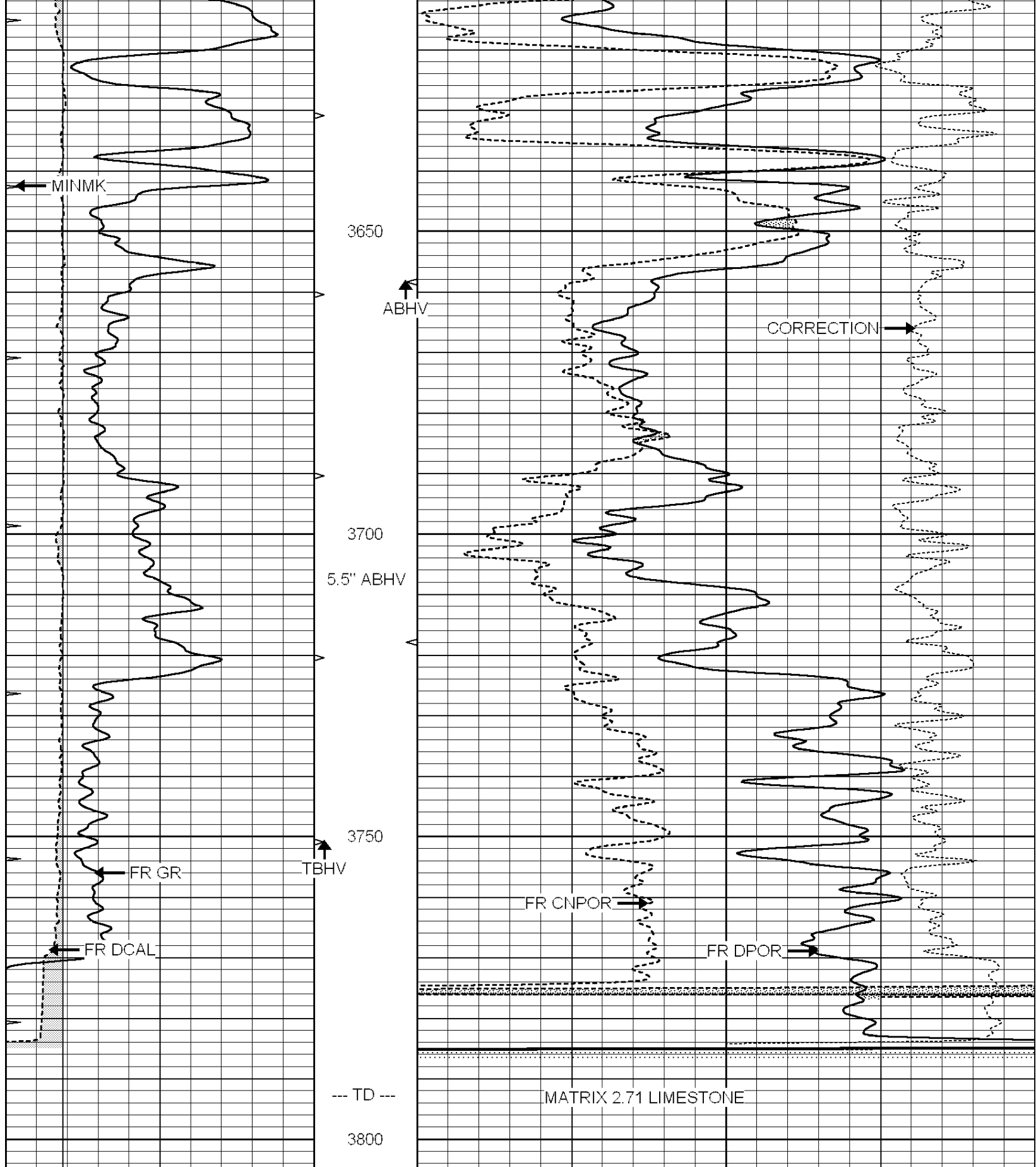
3250

3300

3350







0	GAMMA RAY (GAPI)	150	ABHV	30	COMPENSATED DENSITY (pu)	-10	
6	CALIPER (in)	16	10 (ft3)	0 30	COMPENSATED NEUTRON (pu)	-10	
0	MINMK	20	TBHV		-0.25	CORRECTION (g/cc)	0.25
			0 (ft3)	10			

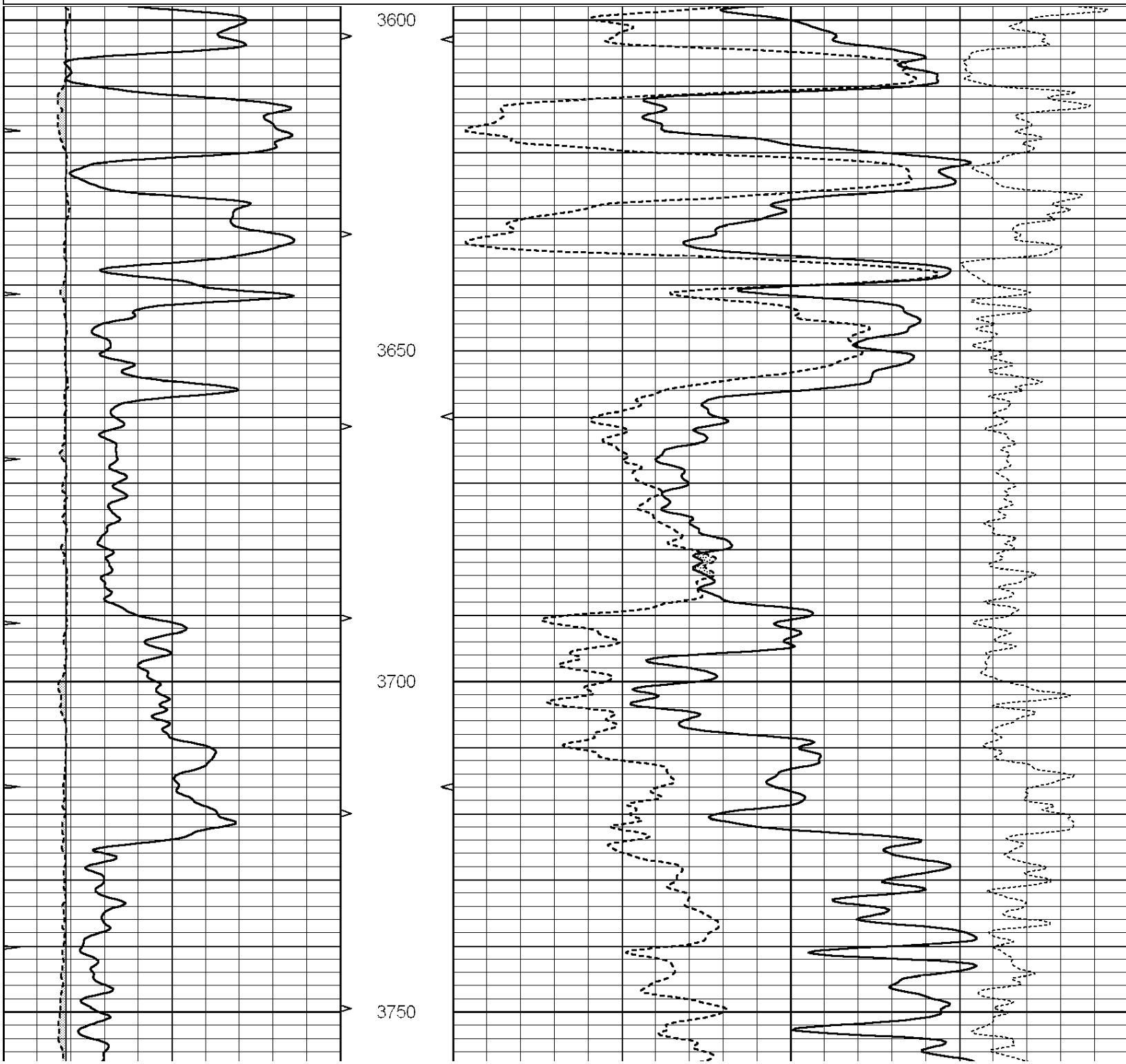


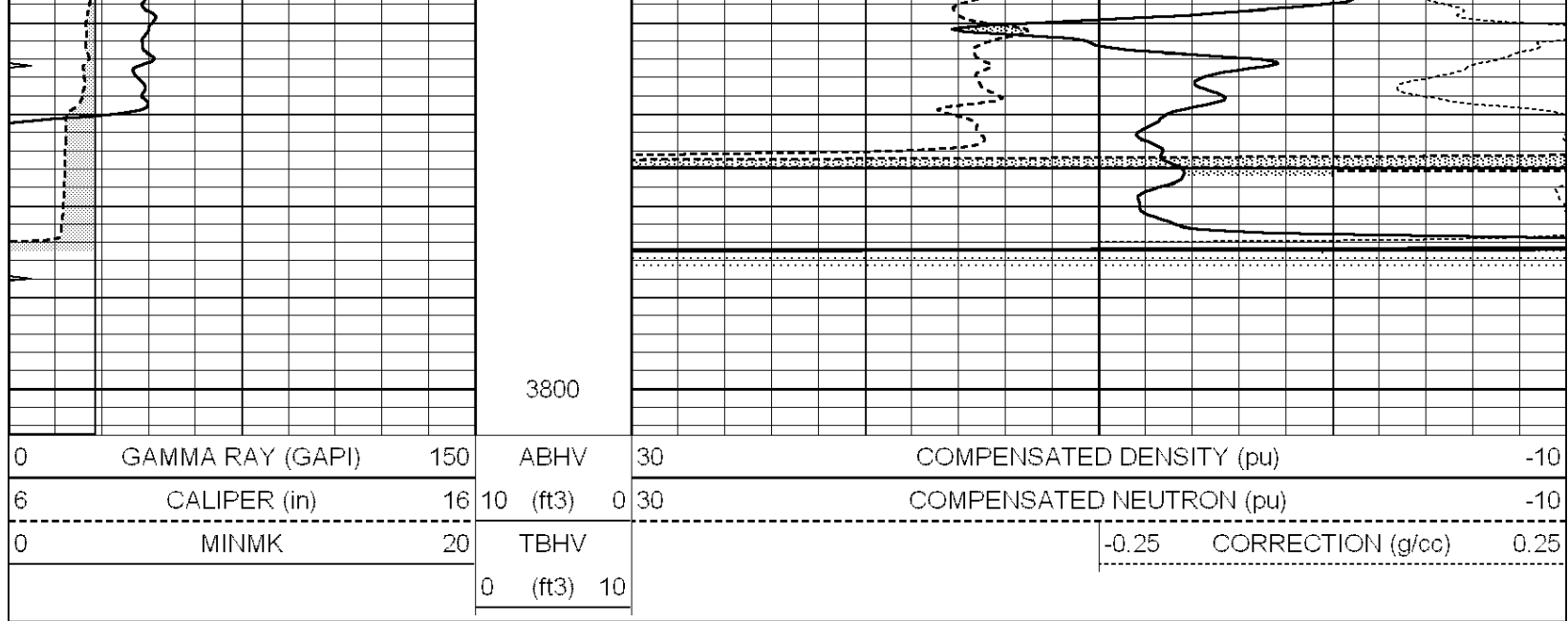
SUPERIOR
Hays,
Kansas

REPEAT SECTION

Database File: 006931ddn.db
 Dataset Pathname: pass2.A
 Presentation Format: den_neu
 Dataset Creation: Mon Jun 06 14:29:48 2011
 Charted by: Depth in Feet scaled 1:240

0	GAMMA RAY (GAPI)	150	ABHV	30	COMPENSATED DENSITY (pu)	-10
6	CALIPER (in)	16	10 (ft3)	0 30	COMPENSATED NEUTRON (pu)	-10
0	MINMK	20	TBHV		-0.25 CORRECTION (g/cc)	0.25
			0 (ft3)	10		





Calibration Report

Database File: 006931ddn.db
 Dataset Pathname: pass3.A
 Dataset Creation: Mon Jun 06 14:13:27 2011

Dual Induction Calibration Report

Serial-Model: DIL5-GEAR
 Performed: Mon Jun 06 13:31:02 2011

Loop:	Readings			References			Results	
	Air	Loop	V	Air	Loop	mmho/m	m	b
Deep	0.004	0.654	V	0.000	400.000	mmho/m	820.000	-3.000
Medium	-0.005	0.737	V	0.000	462.500	mmho/m	500.000	-9.000
Internal:	Zero	Cal		Zero	Cal		m	b
Deep	0.006	0.655	V	0.000	400.000	mmho/m	615.668	-3.483
Medium	0.010	0.747	V	0.000	462.500	mmho/m	627.607	-6.064

Compensated Density Calibration Report

Serial-Model: GEAR1-GEARHART
 Source / Verifier: 147 / 147
 Master Calibration Performed: Mon Jun 06 11:57:40 2011

Master Calibration

	Density		Far Detector	Near Detector	
Magnesium	1.710	g/cc	1243.76	629.14	cps
Aluminum	2.590	g/cc	282.16	435.01	cps
Spine Angle = 76.03			Density/Spine Ratio = 0.576		
	Size		Reading		
Small Ring	9.10	in	3.82	V	
Large Ring	14.20	in	6.37	V	

Compensated Neutron Calibration Report

Serial Number: NUE_2I
 Tool Model: G

CALIBRATION

Detector	Readings	Target	Normalization
Short Space	1.00 cps	1.00 cps	1.0000
Long Space	1.00 cps	1.00 cps	1.0000

Gamma Ray Calibration Report

Serial Number: GR5
Tool Model: OPEN
Performed: Mon Jun 06 13:12:17 2011

Calibrator Value: 1.0 GAPI

Background Reading: 0.0 cps
Calibrator Reading: 1.0 cps

Sensitivity: 0.6700 GAPI/cps