



MIDWEST SURVEYS
 LOGGING - PERFORATING - CONSULTING SERVICES
 P.O. Box 68, Osawatomie, KS 66064
 913 / 755 - 2128

GAMMA RAY / NEUTRON / CCL

API # 15-107-24,376

File No.

Company **Bobcat Oilfield Services, Inc.**

Well **North East Baker No. F-10**

Field **Cadmus / LaCygne**

County **Linn** State **Kansas**

Location **1875' FSL & 2310' FEL
N/2-SW-NW-SE**

Sec. **5** Twp. **20S** Rge. **23E**

Permanent Datum **GL** Elevation **NA**

Log Measured From **GL**

Drilling Measured From **GL**

Other Services **Perforate**

Elevation **NA**

K.B. **NA**

D.F. **NA**

G.L. **NA**

Date

04-05-2011

Run Number

One

Depth Driller

340.0

Depth Logger

332.0

Bottom Logged Interval

330.0

Top Log Interval

20.0

Fluid Level

Full

Type Fluid

Water

Density / Viscosity

NA

Salinity - PPM Cl

NA

Max. Recorded Temp

NA

Estimated Cement Top

0.0

Equipment No.

104

Location

Osawatomie

Recorded By

Gary Windisch

Witnessed By

Bob Eberhart

BORE-HOLE RECORD				CASING RECORD			
Run No.	BIT	FROM	TO	SIZE	WGT.	FROM	TO
One	8.75"	0.0	20.0	6.00"	0.0	0.0	20.0
Two	5.625"	20.0	340.0	2.875"	0.0	0.0	332.0

<<< Fold Here >>>

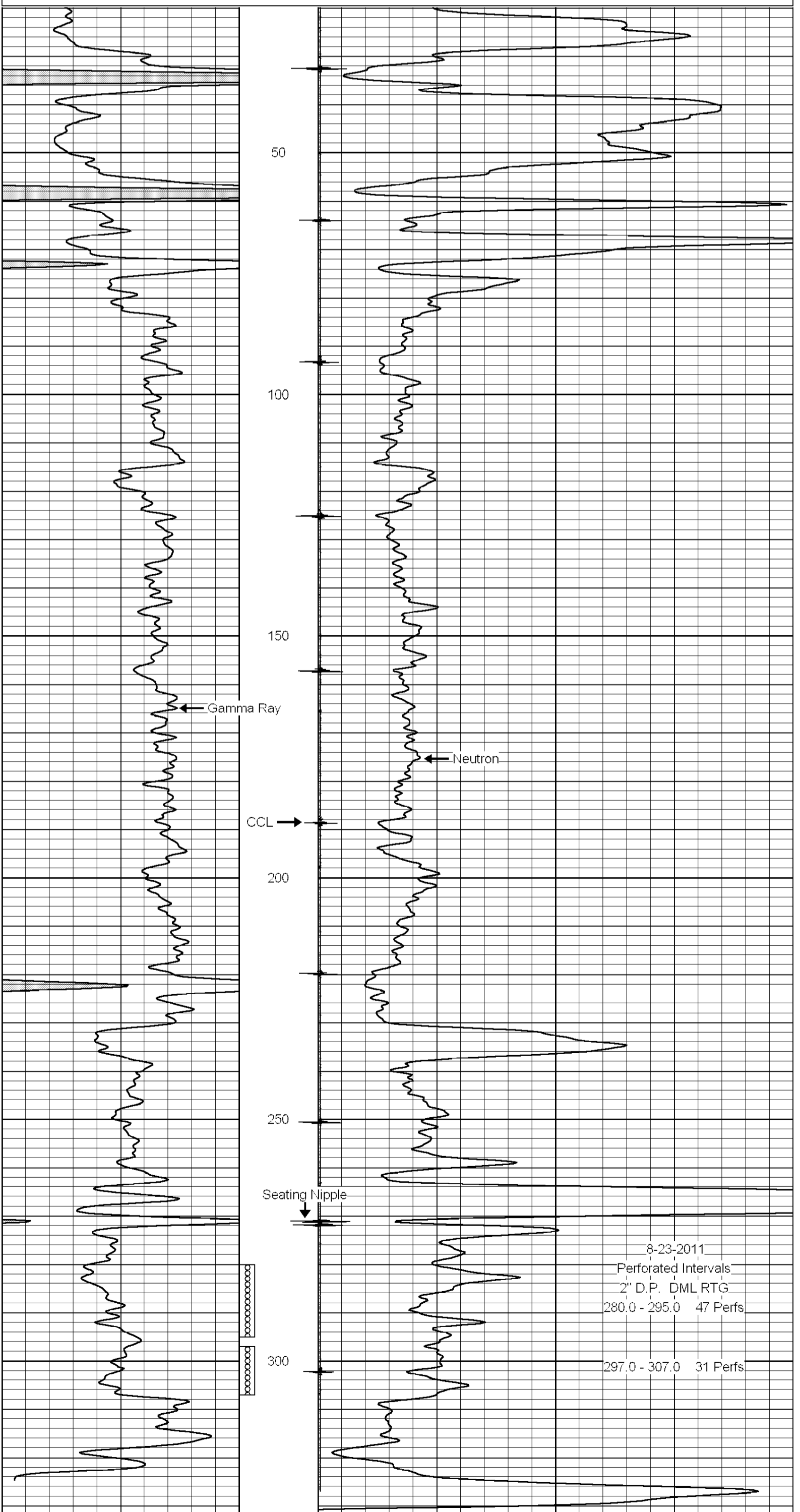
All interpretations are opinions based on inferences from electrical or other measurements and we cannot and do not guarantee the accuracy or correctness of any interpretation, and we shall not, except in the case of gross or willful negligence on our part, be liable or responsible for any loss, costs, damages, or expenses incurred or sustained by anyone resulting from any interpretation made by any of our officers, agents or employees. These interpretations are also subject to our general terms and conditions set out in our current Price Schedule.

Comments

Drilling Contractor :
 Dale Jackson Production Company

Database File: bakr10fn.db
 Dataset Pathname: pass1
 Presentation Format: gr-n-ccl
 Dataset Creation: Tue Apr 05 13:47:26 2011 by Log Warrior Version 6.6
 Charted by: Depth in Feet scaled 1:240

0	Gamma Ray	150	100	Neutron	1800
150	Gamma Ray	300			



0	Gamma Ray	150	100	Neutron	1800
150	Gamma Ray	300			