



MIDWEST SURVEYS
 LOGGING - PERFORATING - CONSULTING SERVICES
 P.O. Box 68, Osawatomie, KS 66064
 913 / 755 - 2128

GAMMA RAY / NEUTRON / CCL

File No.

Company **EnerJex Kansas, Inc.**

Well **Needham No. BSI - N-7**

Field **Paola - Rantoul**

County **Franklin** State **Kansas**

Location **4963 FSL & 4746 FEL**

Location **NW-NW-NW**

Sec **17** Twp **18S** Rge **21E**

Permanent Datum **GL** Elevation **NA**

Log Measured From **GL**

Drilling Measured From **GL**

Date **06-07-2011**

Run Number **One**

Depth Diller **700.0**

Depth Logger **657.0**

Bottom Logged Interval **656.0**

Top Log Interval **20.0**

Fluid Level **Full**

Type Fluid **Water**

Density / Viscosity **NA**

Salinity - PPM Cl **NA**

Max Recorded Temp **NA**

Estimated Cement Top **0.0**

Equipment No. **107** Location **Osawatomie**

Recorded By **Steve Windisch**

Witnessed By **Jay Schendel**

Other Services
Perforate

Elevation
K.B. NA
D.F. NA
G.L. NA

Perforate

Perforate

Perforate

Perforate

Perforate

Perforate

Perforate

Perforate

Perforate

Perforate

Perforate

Perforate

Perforate

Perforate

Perforate

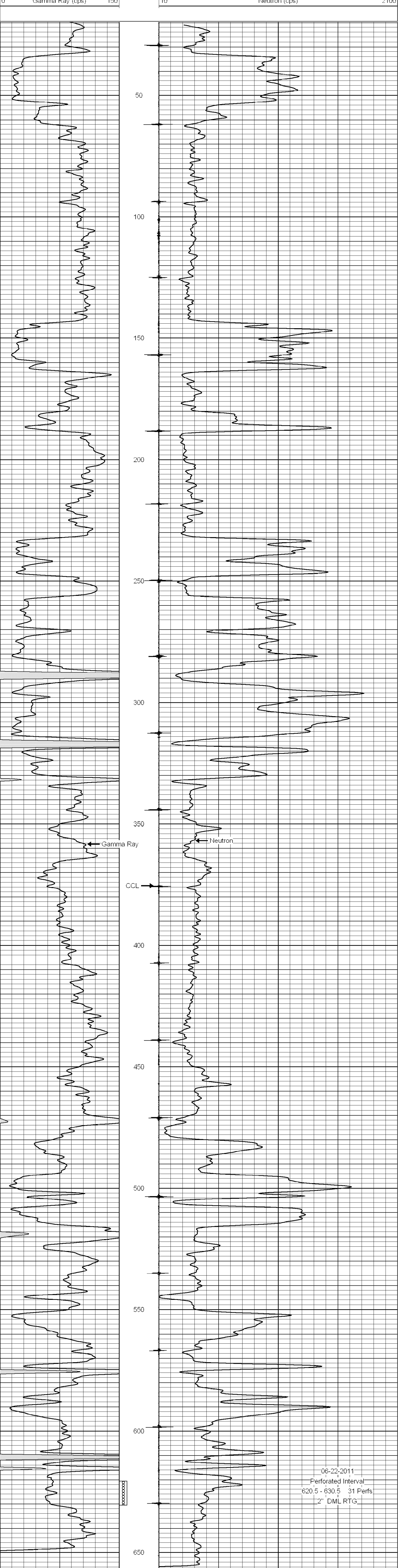
<<< Fold Here >>>

All interpretations are opinions based on inferences from electrical or other measurements and we cannot and do not guarantee the accuracy or correctness of any interpretation, and we shall not, except in the case of gross or willful negligence on our part, be liable or responsible for any loss, costs, damages, or expenses incurred or sustained by anyone resulting from any interpretation made by any of our officers, agents or employees. These interpretations are also subject to our general terms and conditions set out in our current Price Schedule.

Comments

Drilling Contractor :
JTC Oil, Inc.

Database File: ndhm7bsi.db
 Dataset Pathname: pass1
 Presentation Format: gr-n-ccl
 Dataset Creation: Tue Jun 07 15:35:29 2011 by Log Std Casedhole 07122
 Charted by: Depth in Feet scaled 1:240



06-22-2011
 Perforated Interval
 620.5 - 630.5 31 Perfs
 2" DML RTG