



Dual Compensated
Porosity Log

DIGITAL LOG (785) 625-3858

API No. 15-077-21,697-00-00

Company Charles N. Griffin
Well Dena B No. 1
Field Hibbord Northeast
County Harper State Kansas

Location 330' FSL & 2970' FEL
Other Services DIL

Sec: 31 Twp: 33S Rge: 8W

Permanent Datum Ground Level Elevation 1302
Log Measured From Kelly Bushing 7 Ft. Above Perm. Datum
Drilling Measured From Kelly Bushing

K.B. 1309
D.F.
G.L. 1302

Date 09/07/2010

Run Number One

Type Log CNL / CDL

Depth Driller 4611

Depth Logger 4612

Bottom Logged Interval 4591

Top Logged Interval 3300

Type Fluid In Hole Chemical

Salinity, PPM CL 3,500

Density 9.0

Level Full

Max. Rec. Temp. F 124

Operating Rig Time 2 Hours

Equipment -- Location 17 Hays

Recorded By Jason Wellbrock

Witnessed By Bruce Reed

Borehole Record				Casing Record			
Run No.	Bit	From	To	Size	Wgt.	From	To
1	12.25	00	266	8.625	24#	00	266
2	7.875	266	4611				

<<< Fold Here >>>

All interpretations are opinions based on inferences from electrical or other measurements and we cannot and do not guarantee the accuracy or correctness of any interpretation, and we shall not, except in the case of gross or willful negligence on our part, be liable or responsible for any loss, costs, damages, or expenses incurred or sustained by anyone resulting from any interpretation made by any of our officers, agents or employees. These interpretations are also subject to our general terms and conditions set out in our current Price Schedule.

Comments

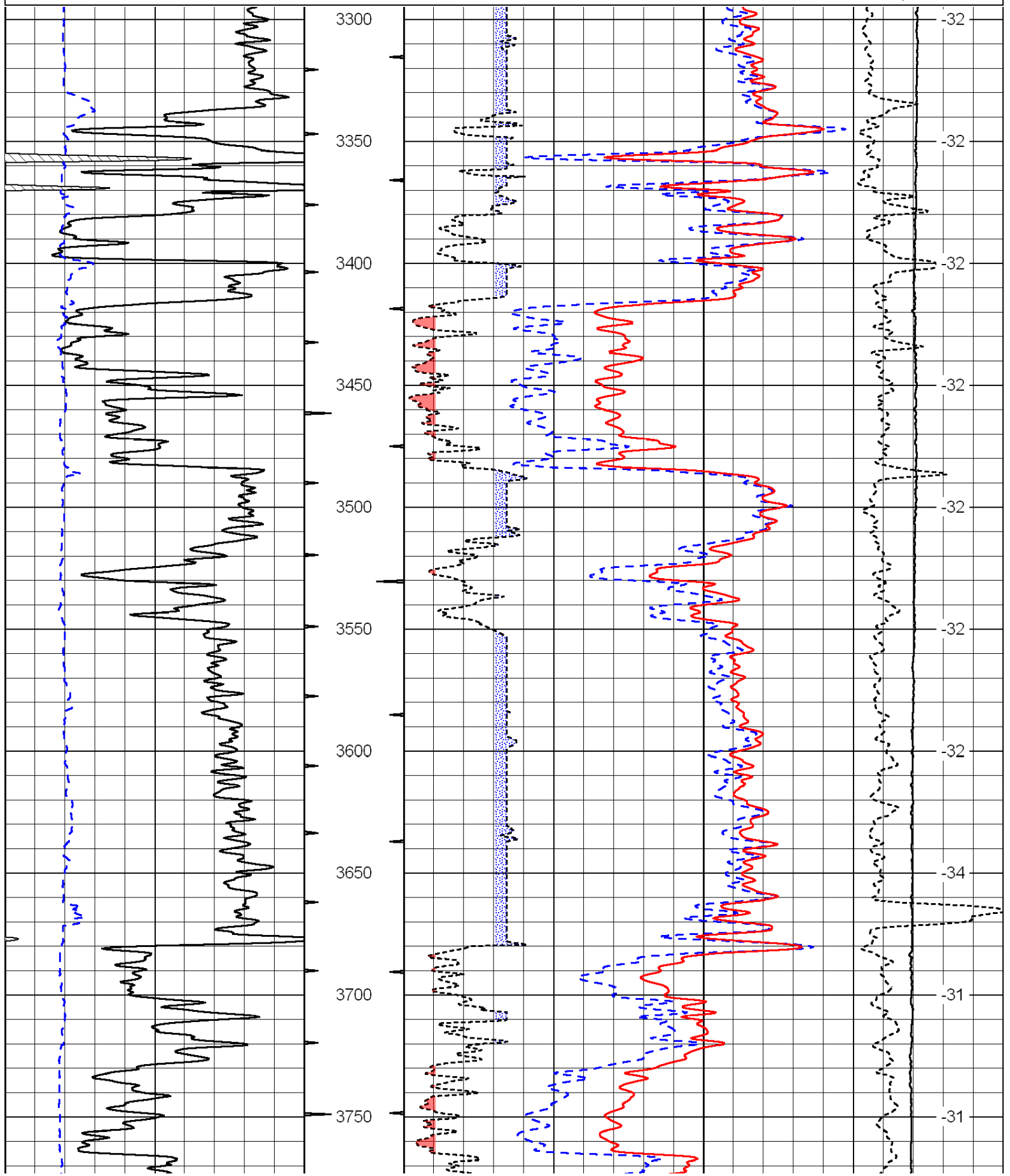
Thank you for using Log-Tech, Inc.
(785) 625-3858

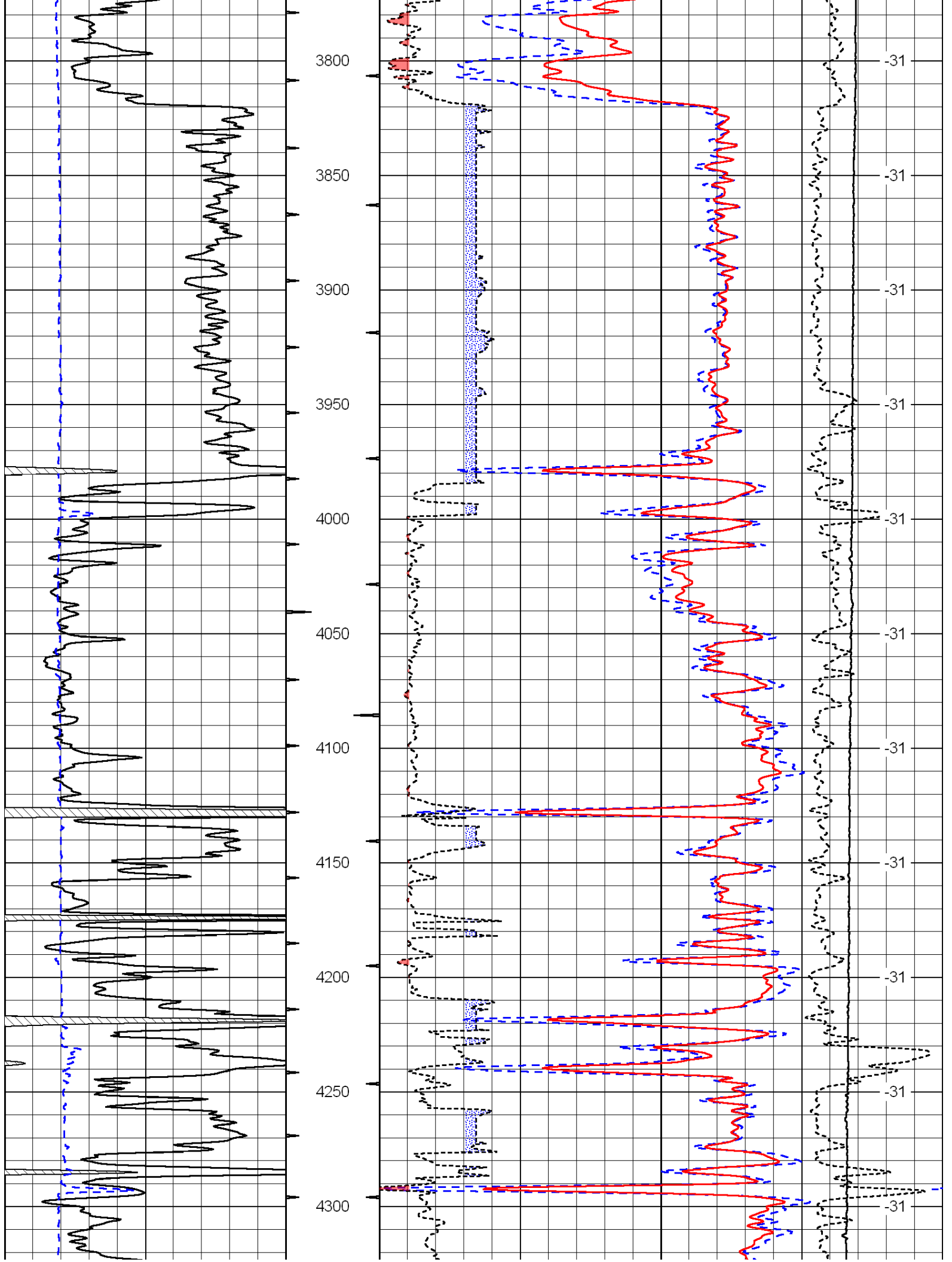
Attica S to Highway 2, 2S, 1/2E, N Into

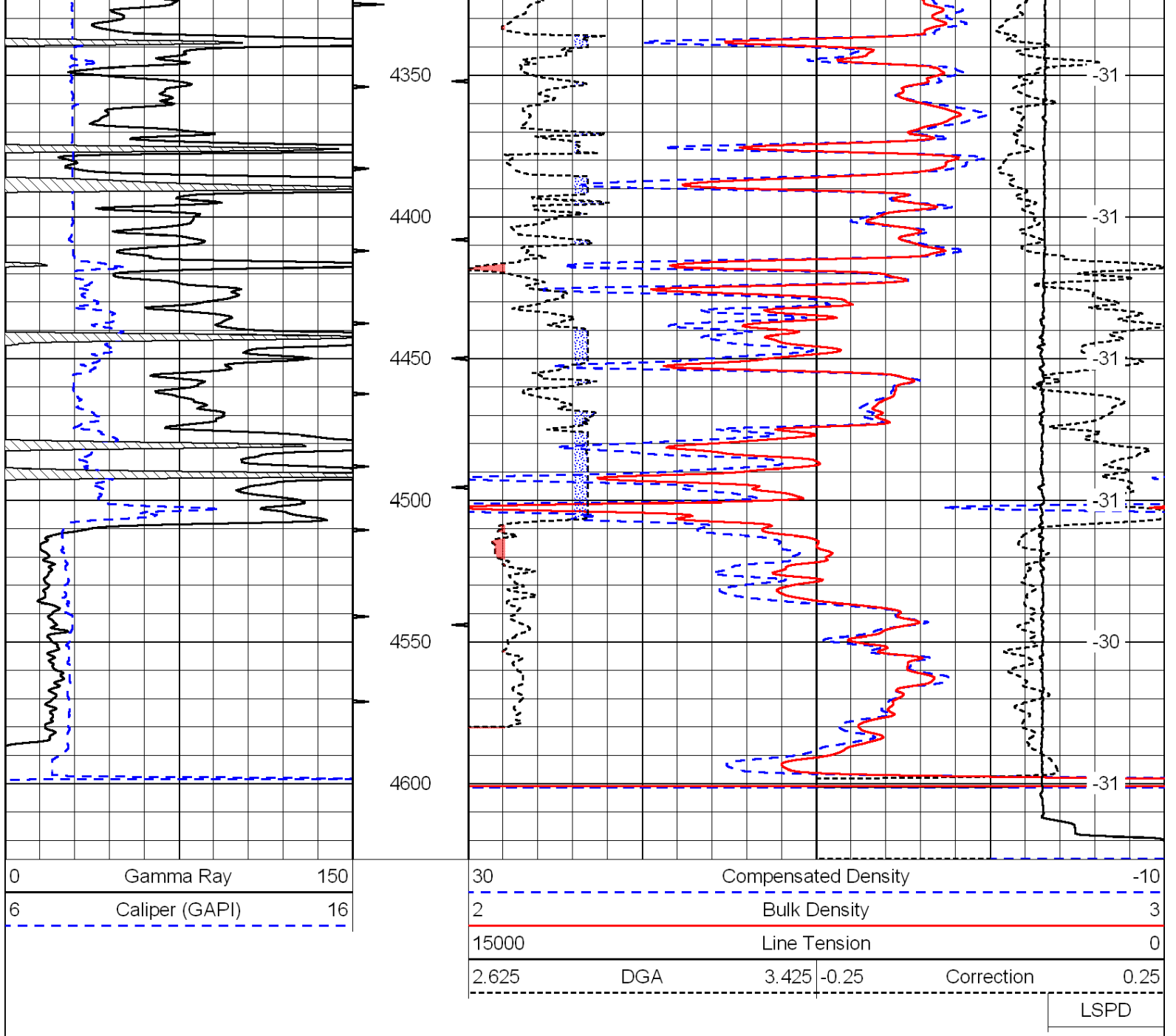
Database File: c:\warrior\data\griffin_dena b no. 1\griffinhd.db
 Dataset Pathname: dil\griffdt
 Presentation Format: cdl
 Dataset Creation: Tue Sep 07 16:35:01 2010
 Charted by: Depth in Feet scaled 1:600

0	Gamma Ray	150
6	Caliper (GAPI)	16

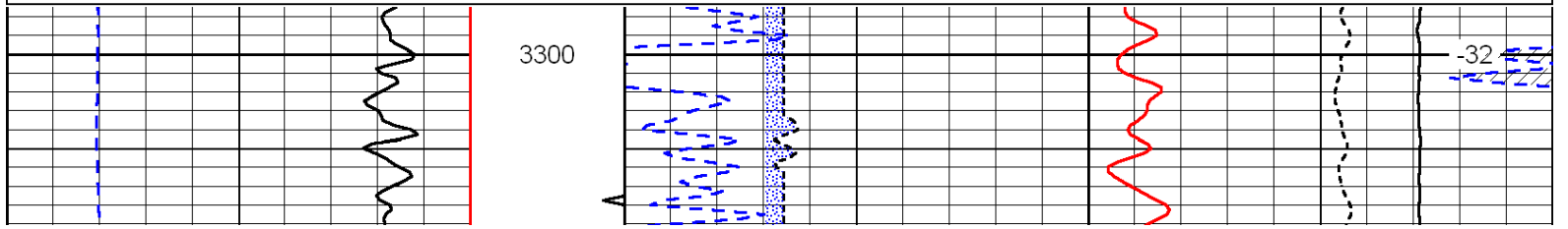
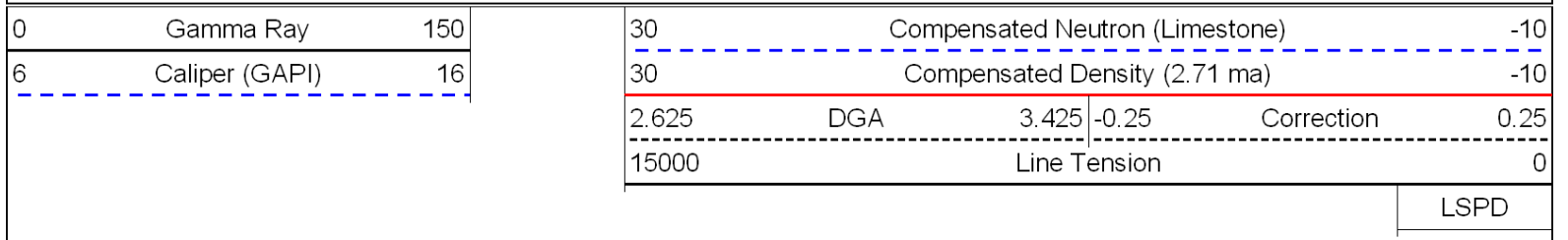
30	Compensated Density		-10
2	Bulk Density		3
15000	Line Tension		0
2.625	DGA	3.425	-0.25
			Correction
			0.25
LSPD			

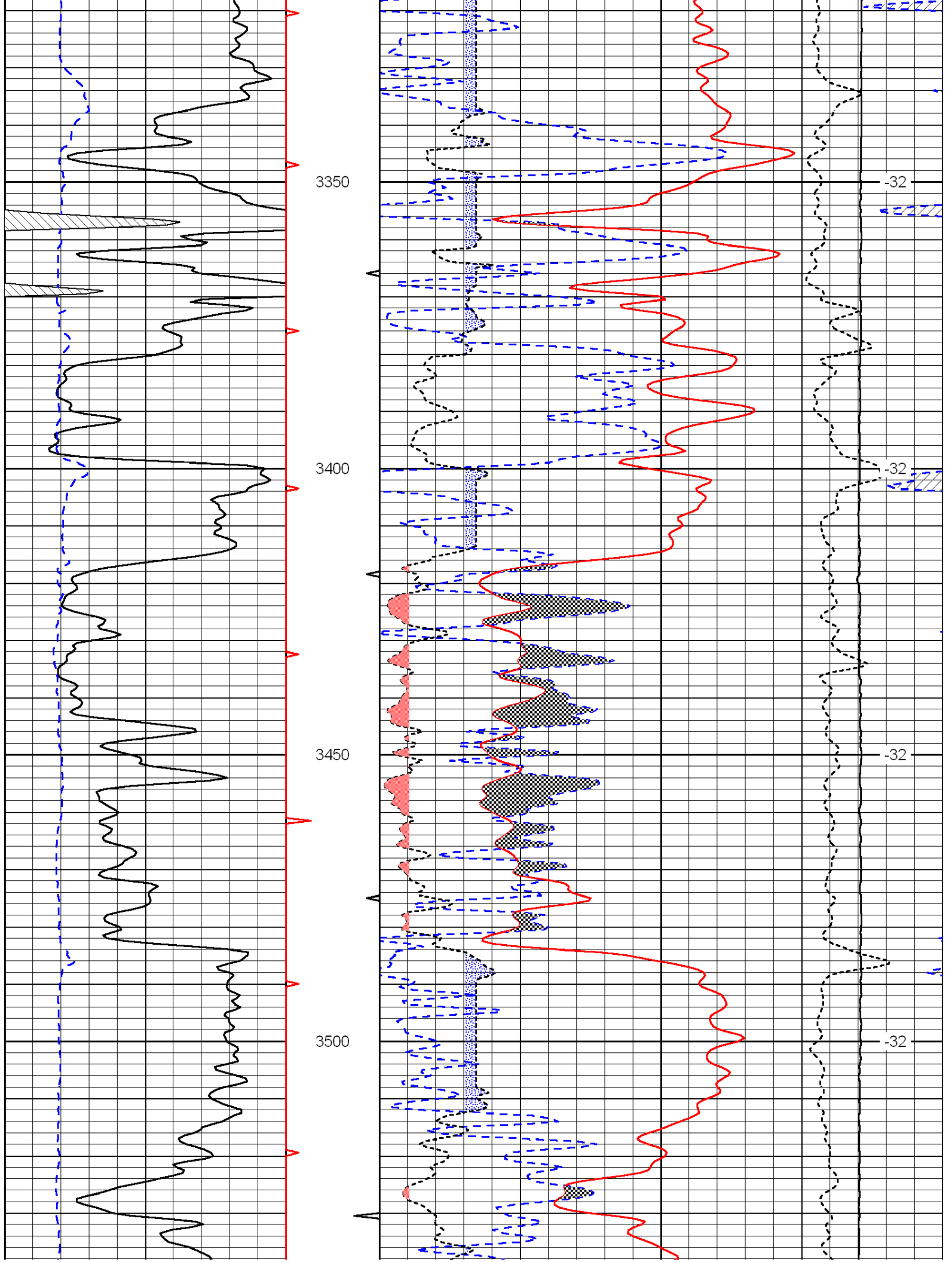


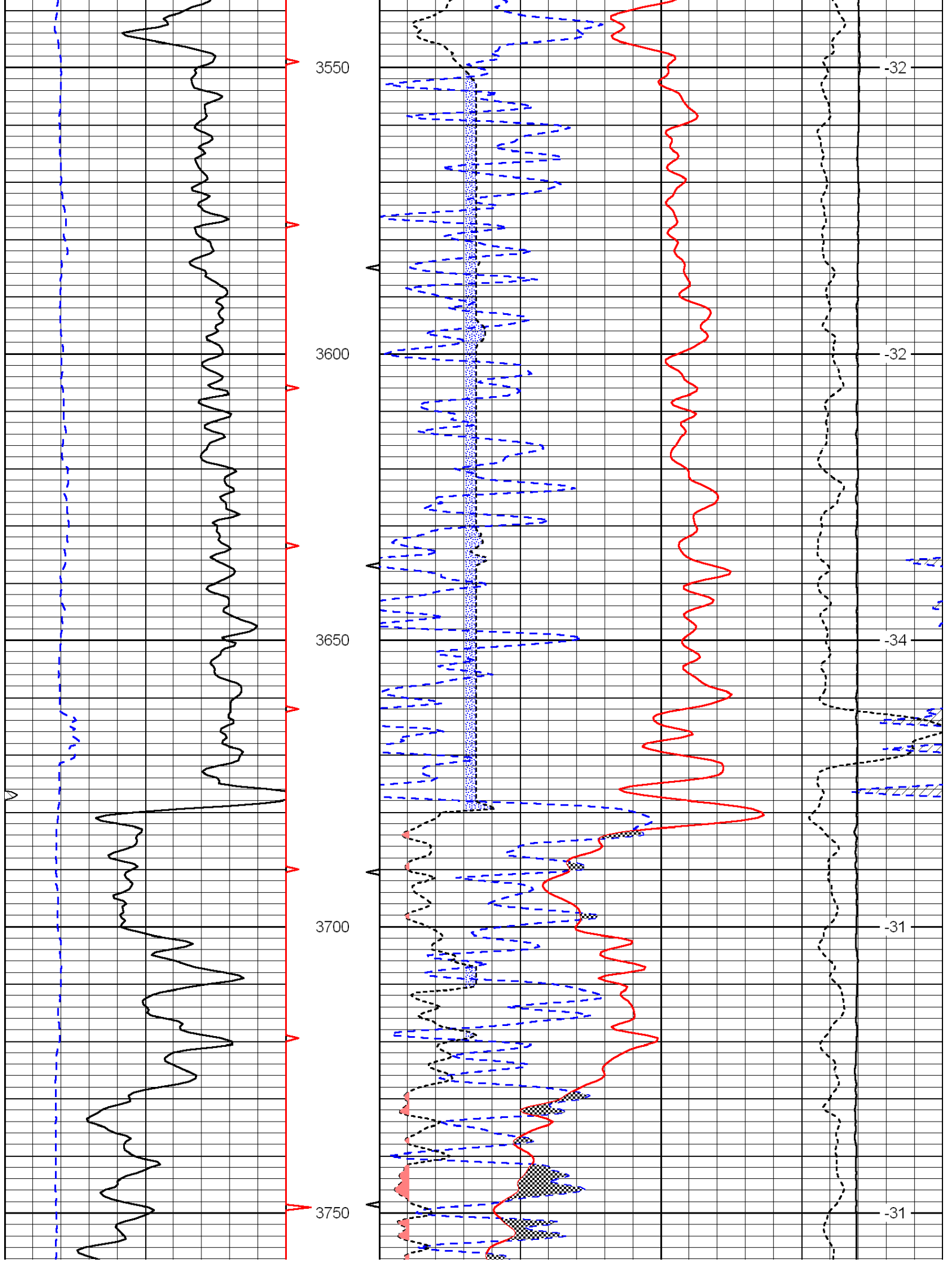


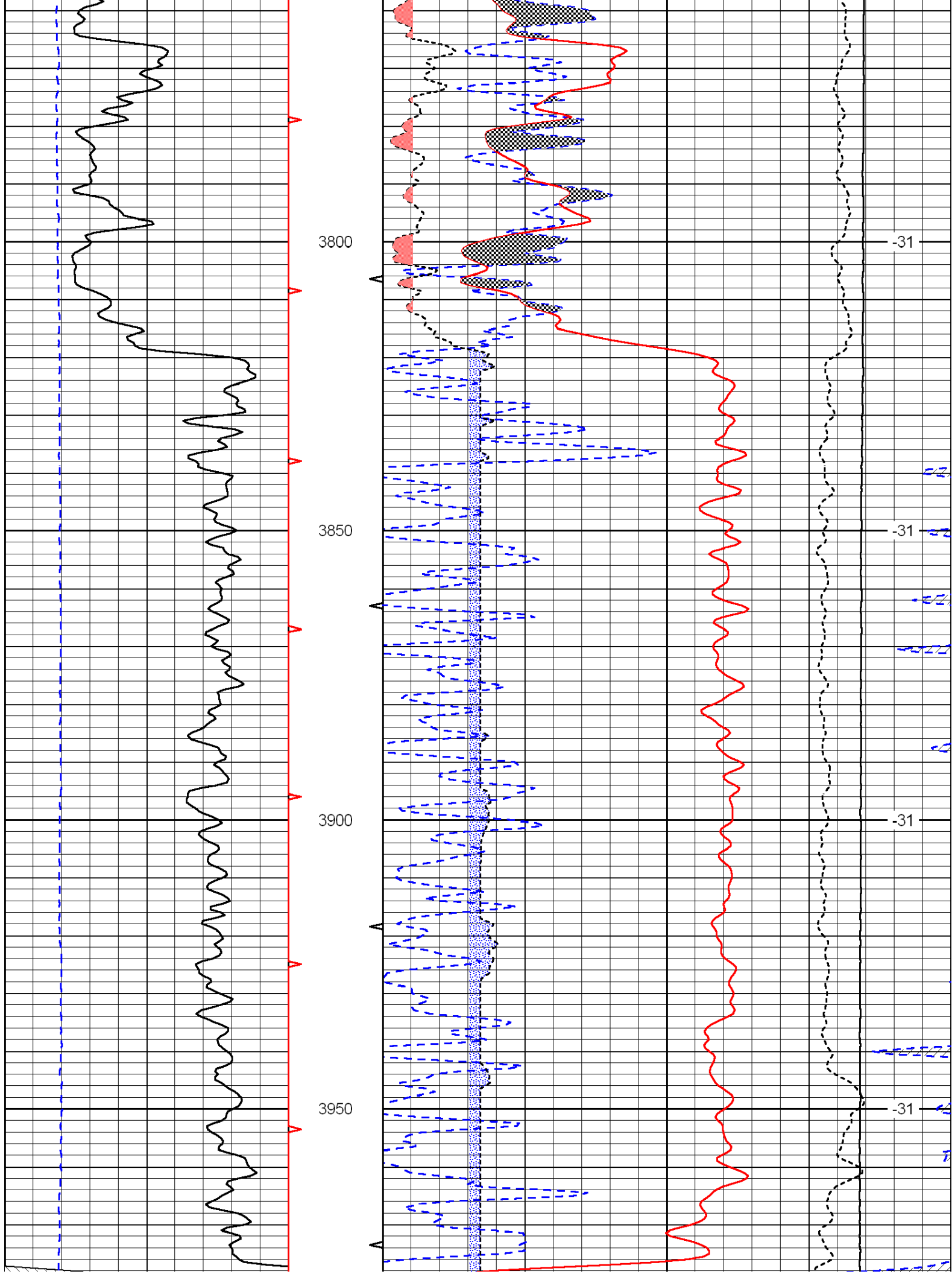


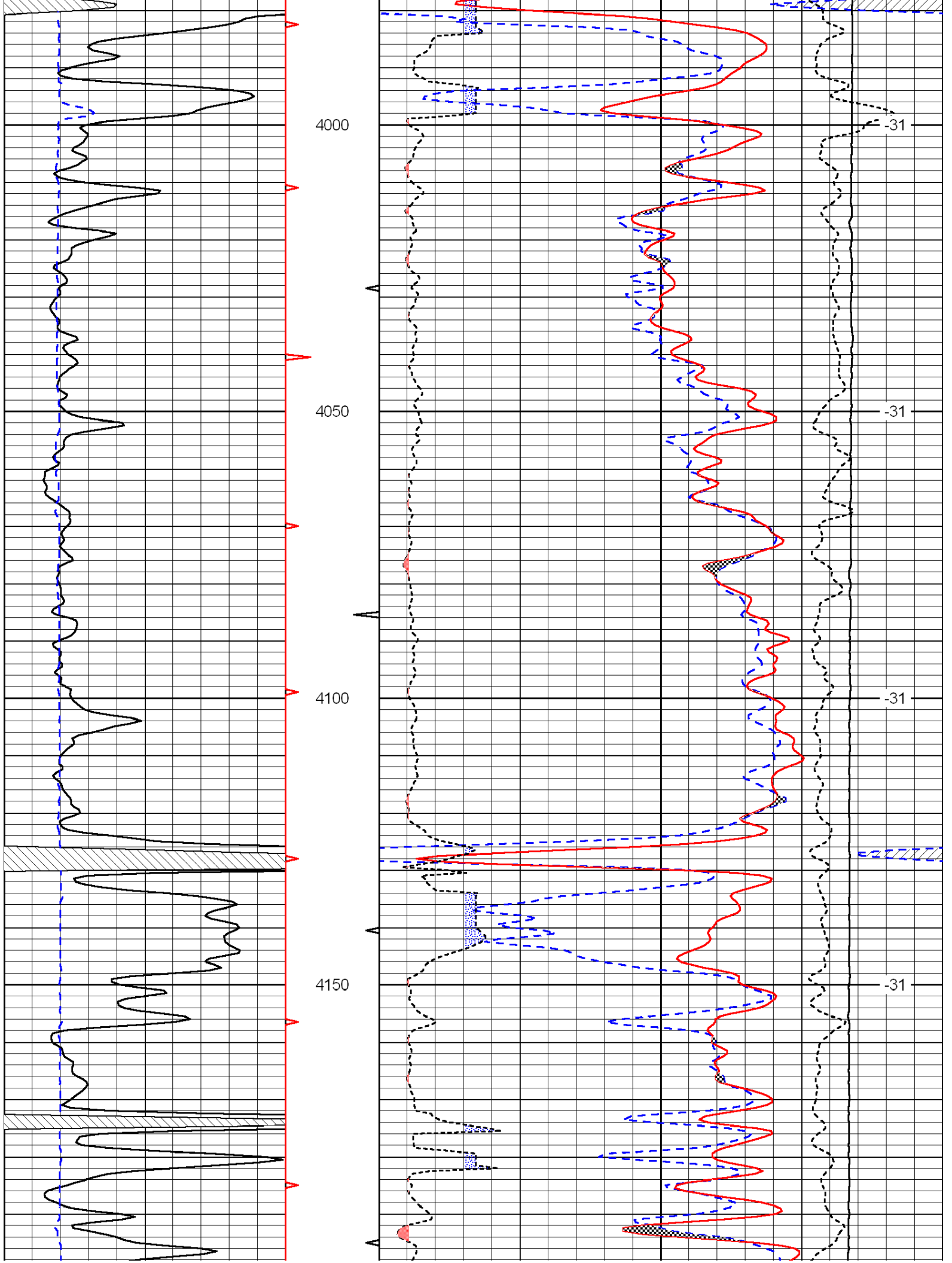
Database File: c:\warrior\data\griffin_dena b no. 1\griffinhd.db
 Dataset Pathname: dil/griffdt
 Presentation Format: cndlspec
 Dataset Creation: Tue Sep 07 16:35:01 2010
 Charted by: Depth in Feet scaled 1:240

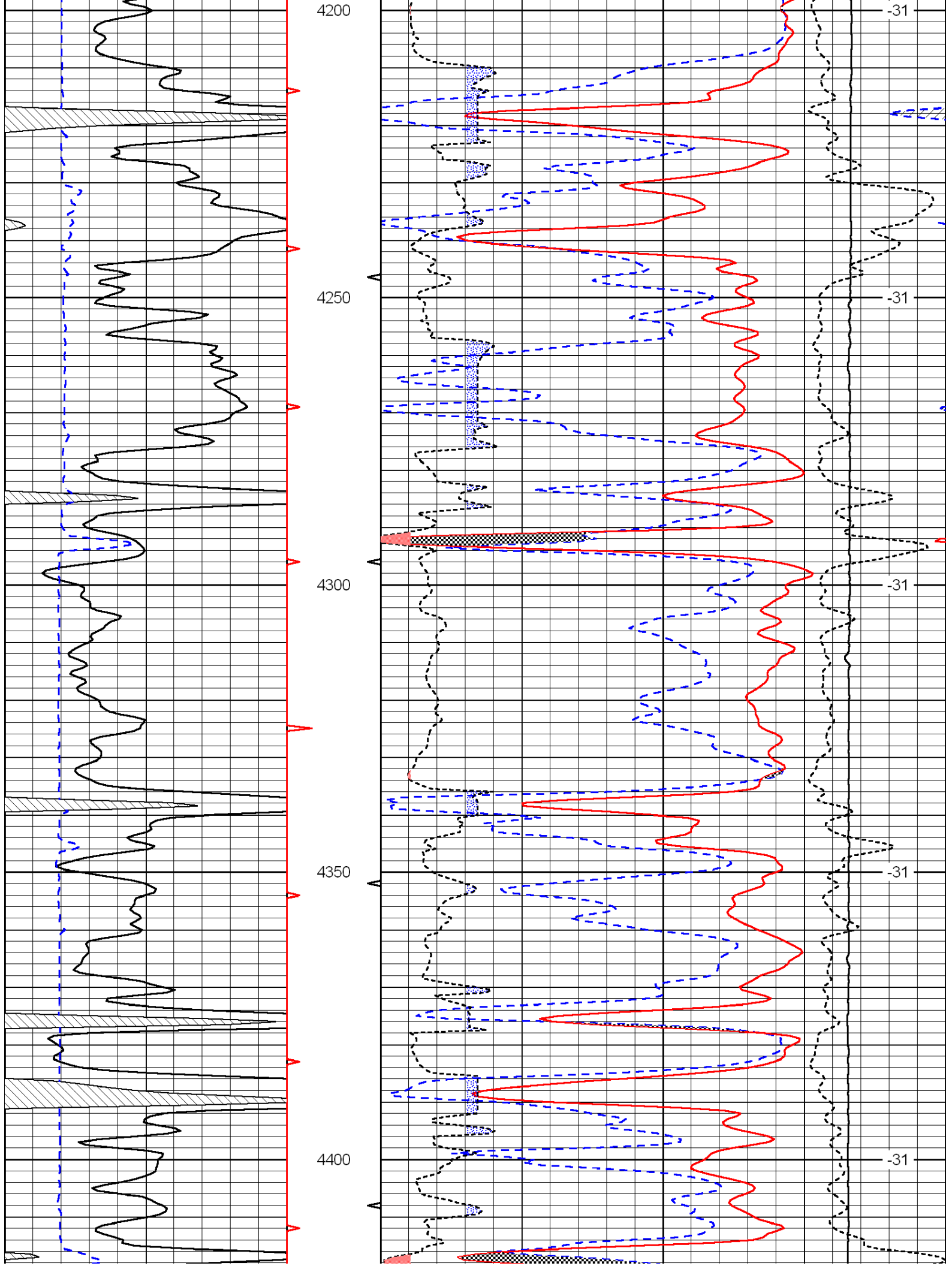


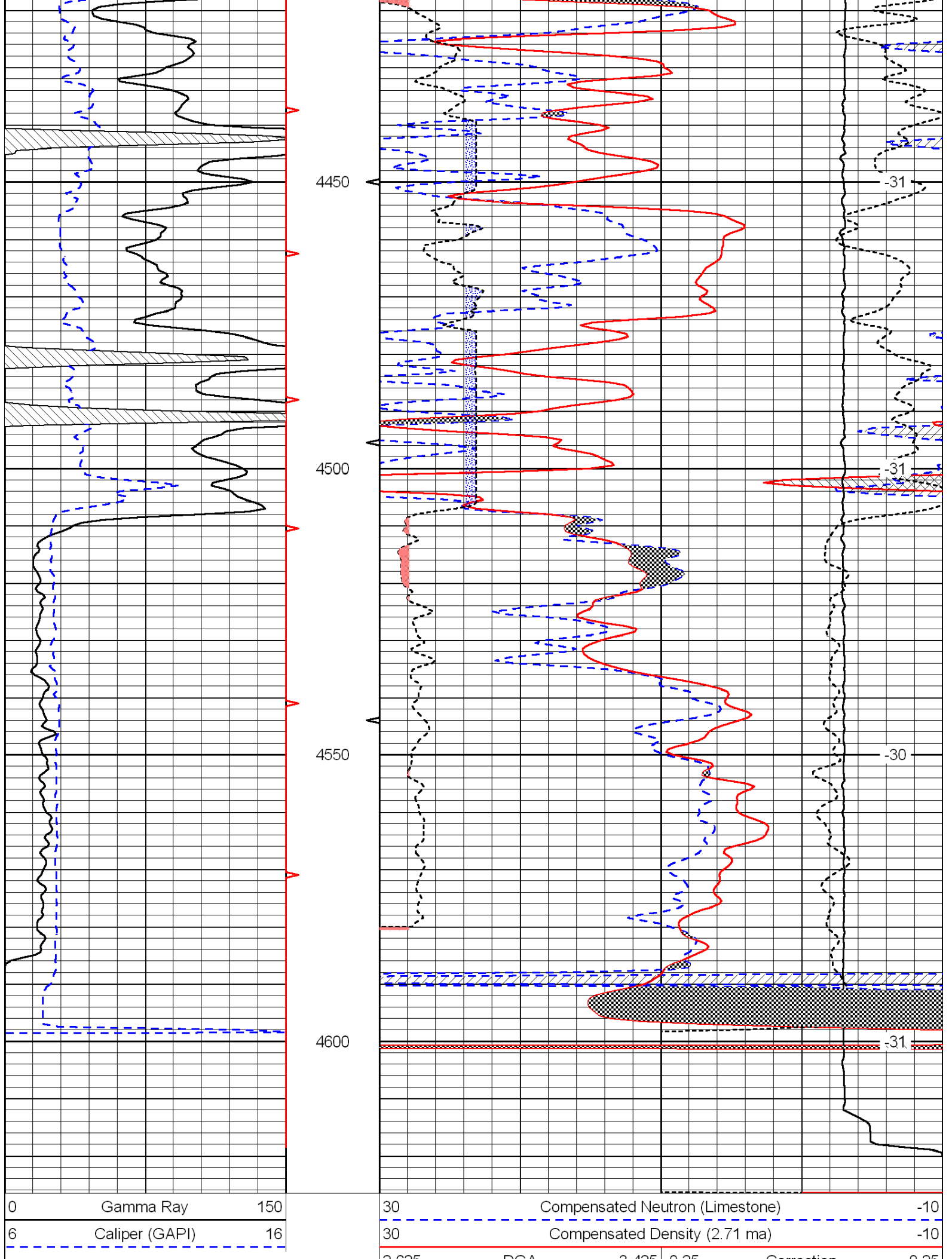












2.625	DGA	3.425	-0.25	Correction	0.25
15000		Line Tension			0
					LSPD