



DIGITAL LOG (785) 625-3858

Dual Induction Log

API No.	15-077-21,697-00-00	
Company	Charles N. Griffin	
Well	Dena B No. 1	
Field	Hibbord Northeast	
County	Harper	State
Location	330' FSL & 2970' FEL	
	Sec: 31	Twp: 33S Rge: 8W
	Elevation 1302	
	Log Measured From Kelly Bushing 7 Ft. Above Perm. Datum	
	Drilling Measured From Kelly Bushing	
	Other Services	CNL/CDL
	Elevation	K.B. 1309 D.F. 1302 G.L. 1302

Date	09/07/2010
Run Number	One
Depth Driller	4611
Depth Logger	4612
Bottom Logged Interval	4611
Top Log Interval	250
Casing Driller	8.625 @ 266
Casing Logger	264
Bit Size	7.875
Type Fluid in Hole	Chemical
Salinity, ppm CL	3.500
Density / Viscosity	9.0   62
pH / Fluid Loss	10.0   8.8
Source of Sample	Flowline
Rm @ Meas. Temp	.9 @ 80
Rmf @ Meas. Temp	.67 @ 80
Rmc @ Meas. Temp	1.21 @ 80
Source of Rmf / Rmc	Charts
Rm @ BHT	.58 @ 124
Operating Rig Time	2 Hours
Max Rec. Temp. F	124
Equipment Number	17
Location	Hays
Recorded By	Jason Wallbrock
Witnessed By	Bruce Reed

<<< Fold Here >>>

All interpretations are opinions based on inferences from electrical or other measurements and we cannot and do not guarantee the accuracy or correctness of any interpretation, and we shall not, except in the case of gross or willful negligence on our part, be liable or responsible for any loss, costs, damages, or expenses incurred or sustained by anyone resulting from any interpretation made by any of our officers, agents or employees. These interpretations are also subject to our general terms and conditions set out in our current Price Schedule.

Comments

Thank you for using Log-Tech, Inc.  
 (785) 625-3858  
 Attica S to Highway 2, 2S, 1/2E, N Into

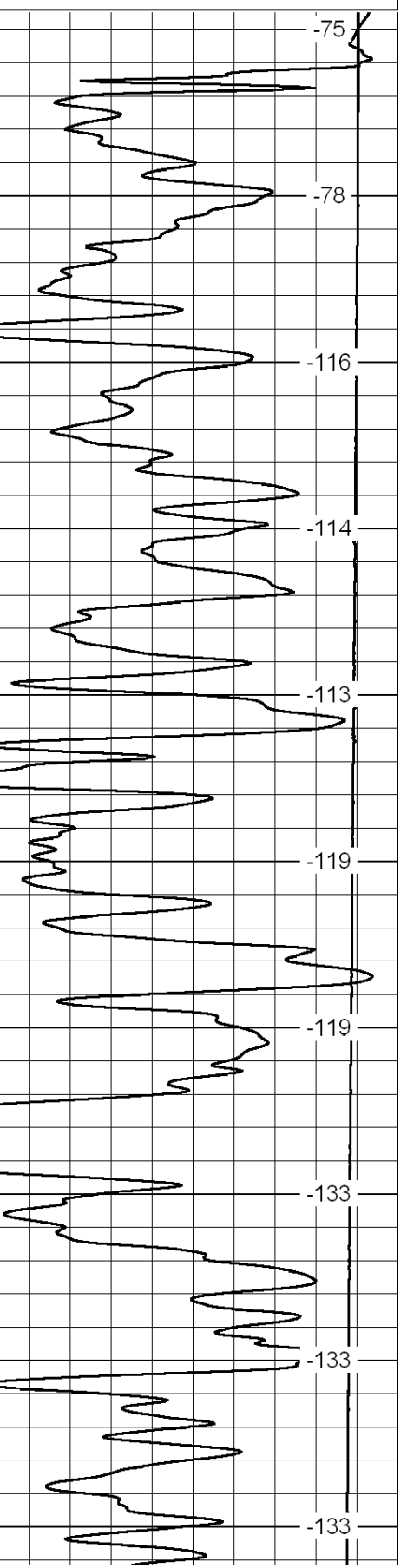
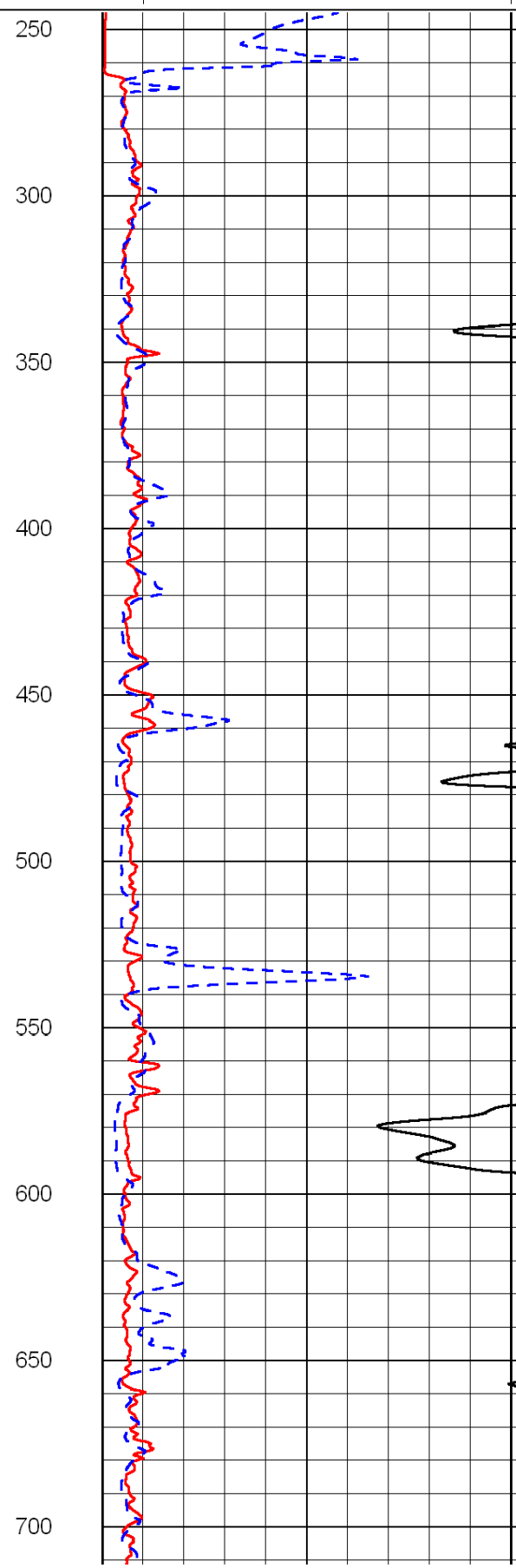
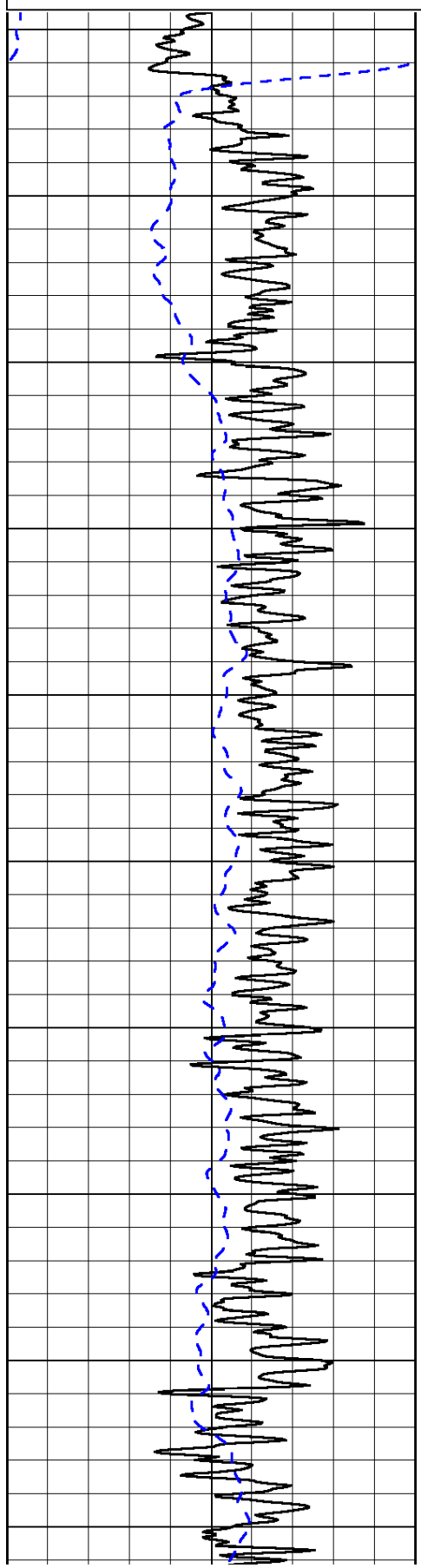
0	Gamma Ray	150
-200	SP (mV)	0

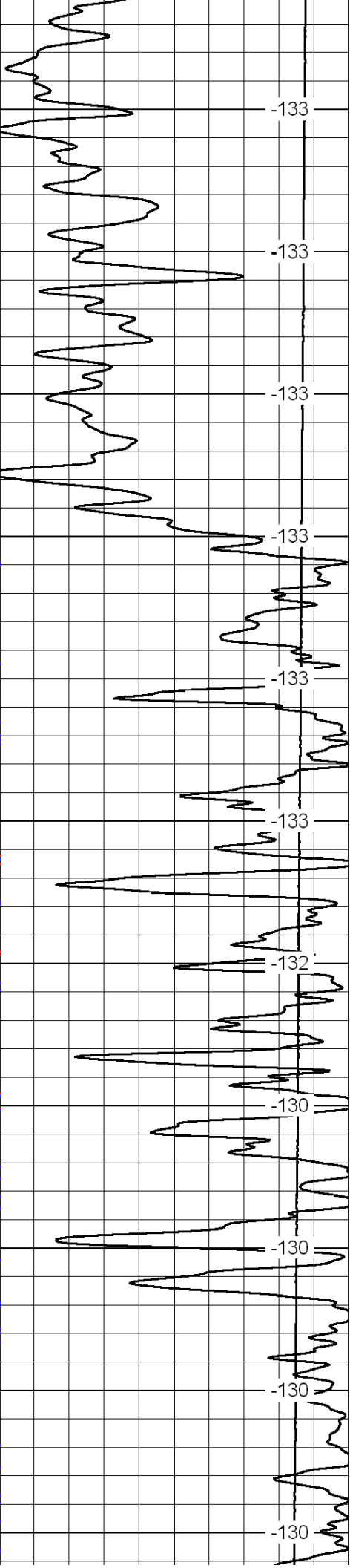
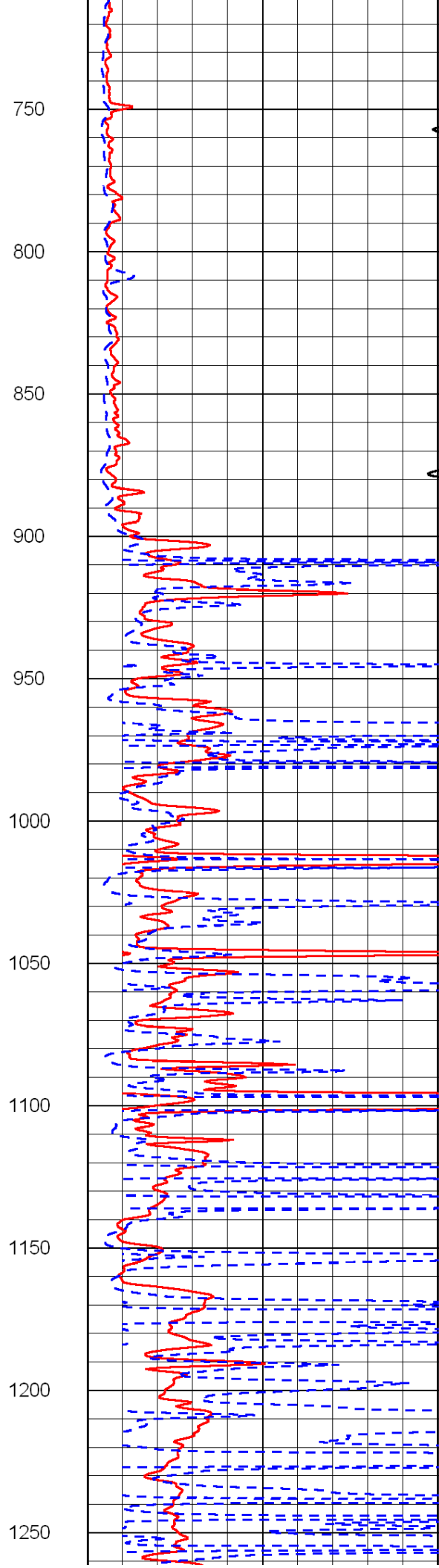
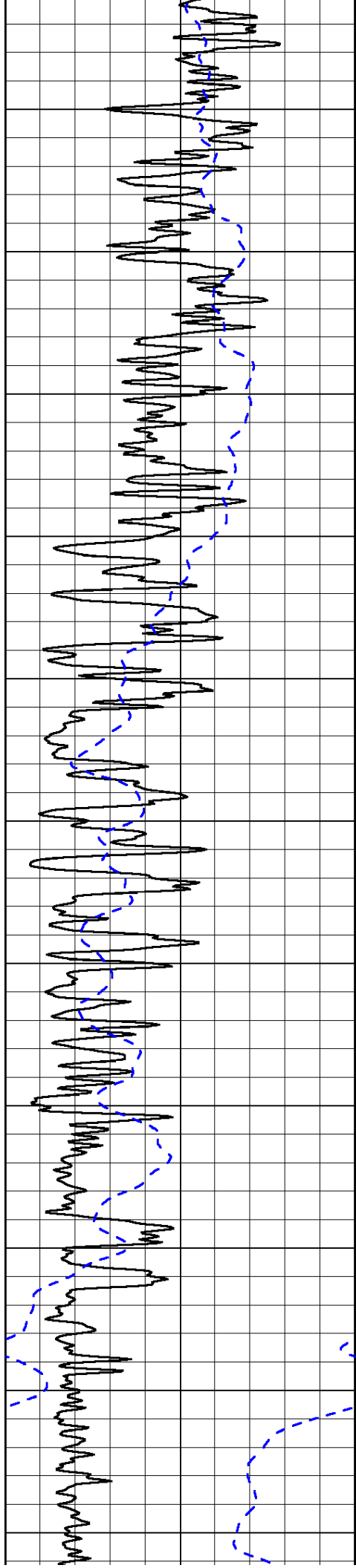
0	Shallow Resistivity	50
0	Deep Resistivity	50

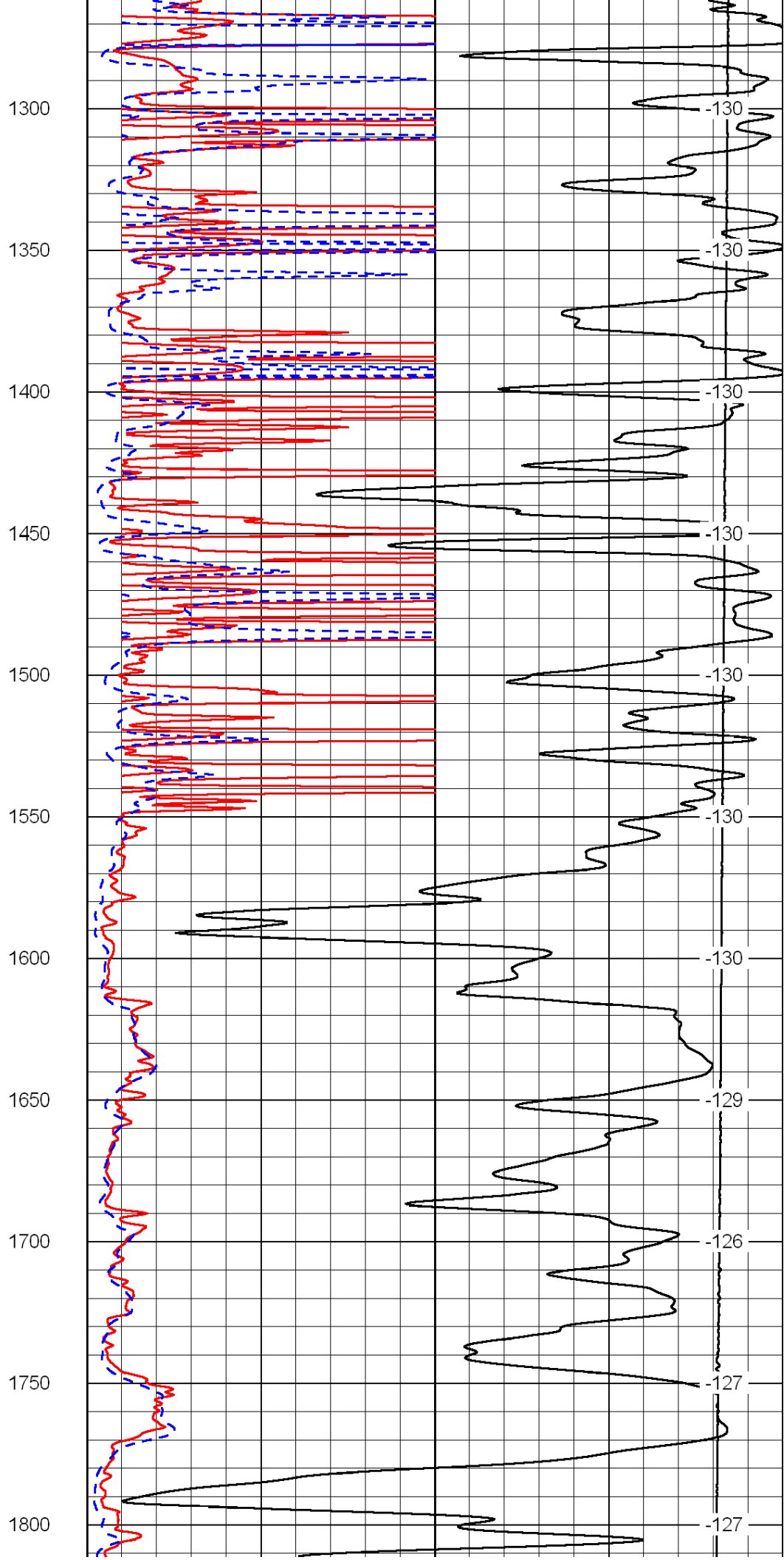
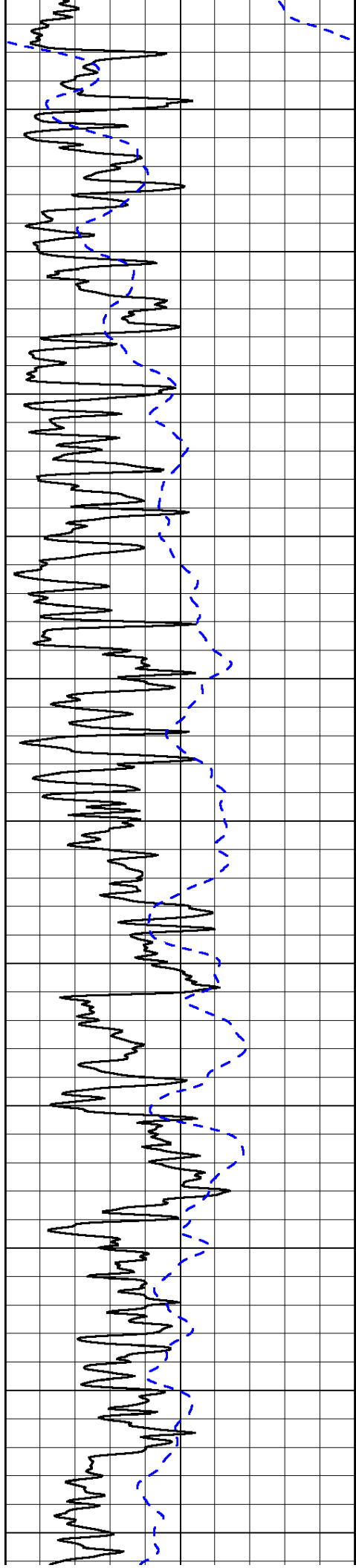
LSPD

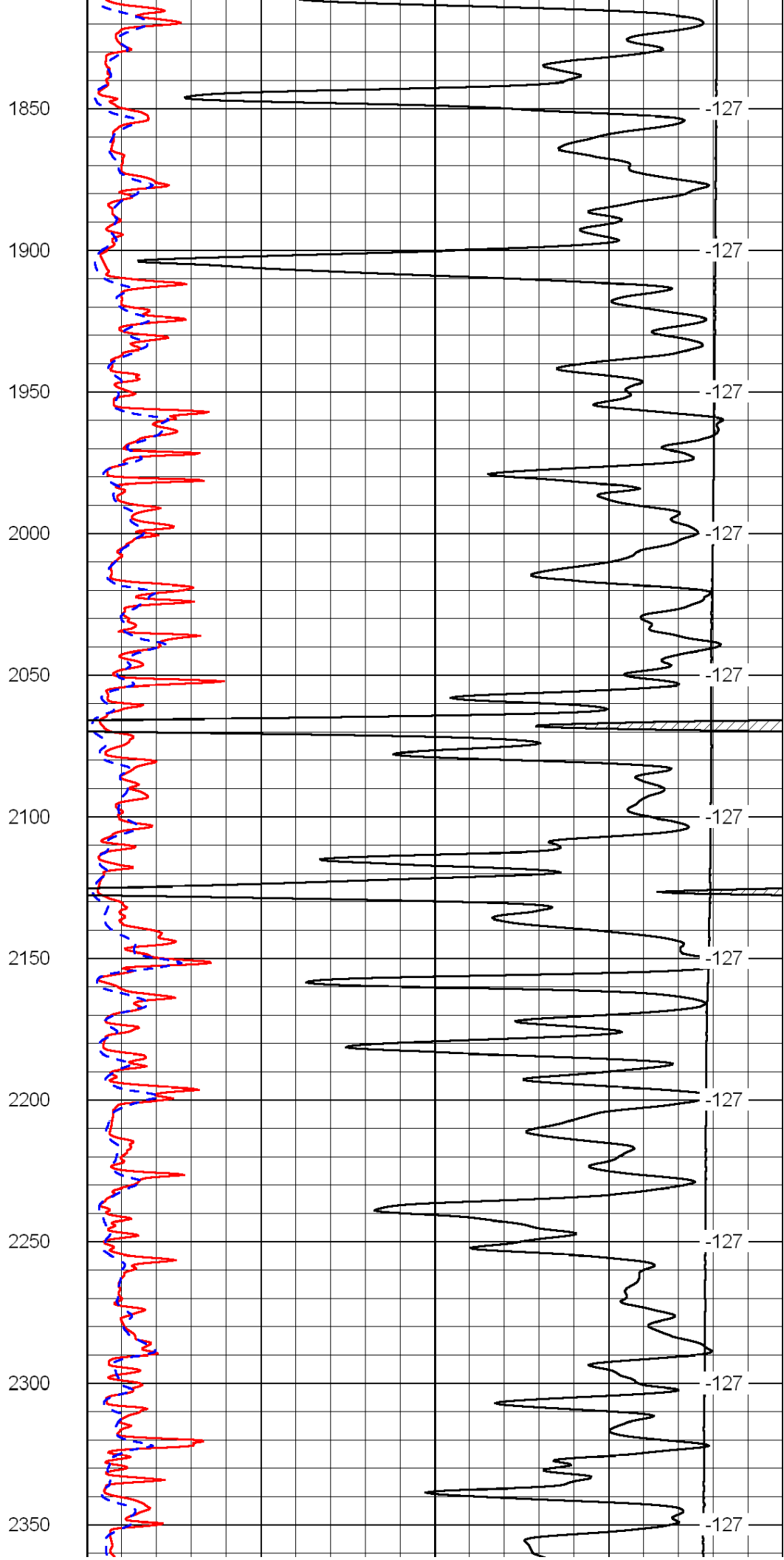
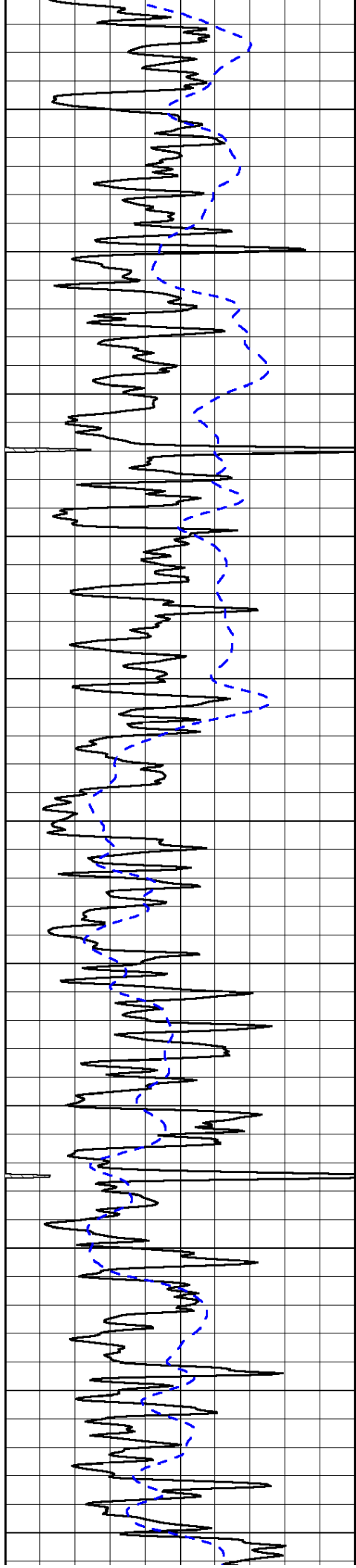
1000	Conductivity	0
15000	Line Tension	0

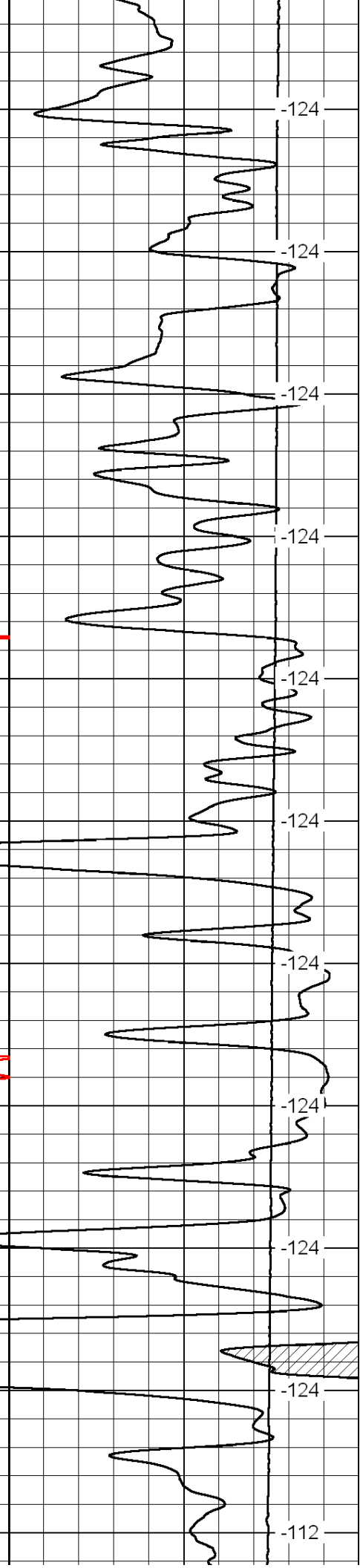
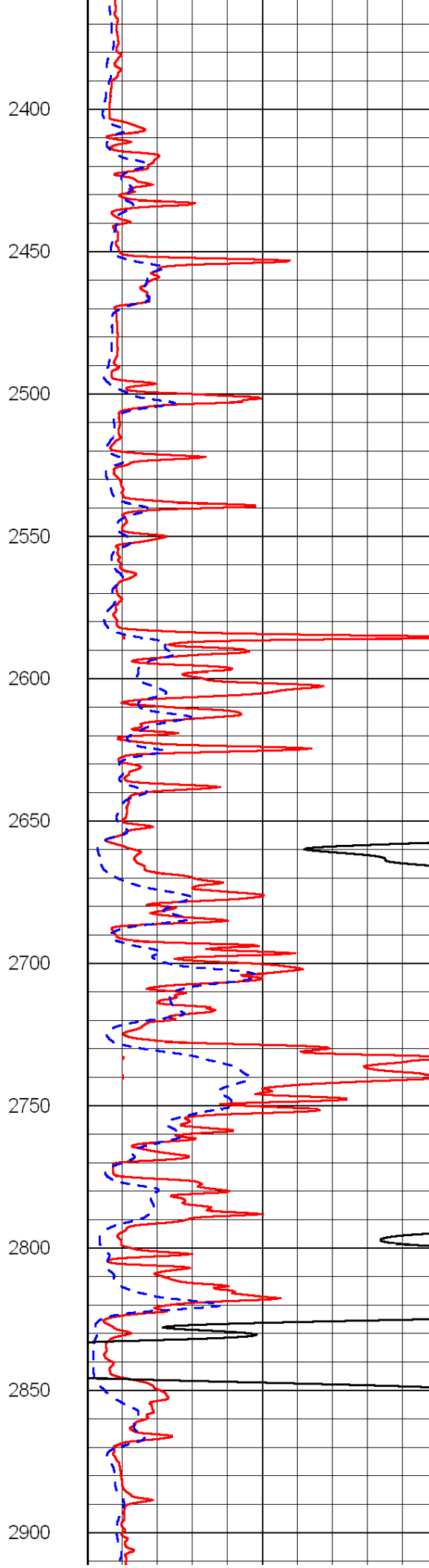
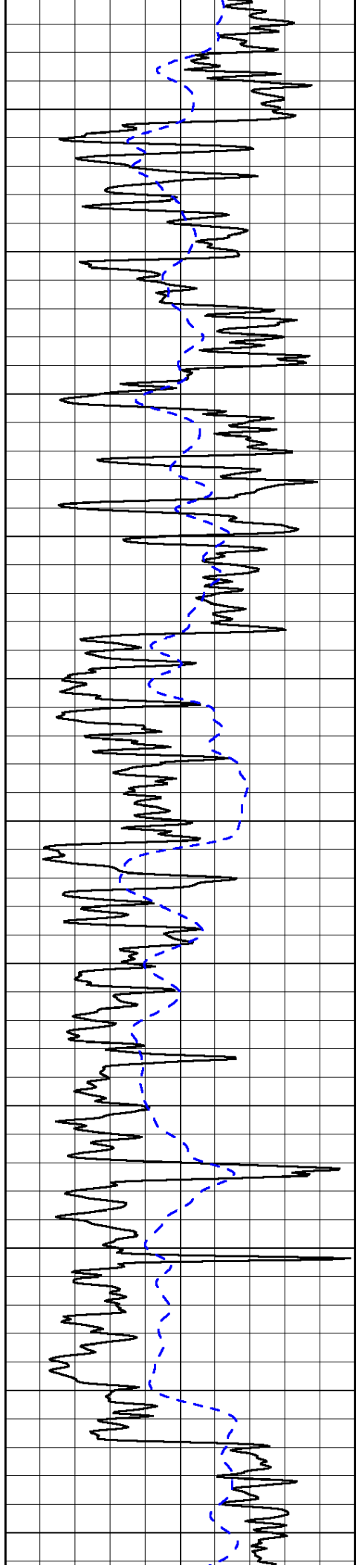
50	Shallow Resistivity	500
50	Deep Resistivity	500

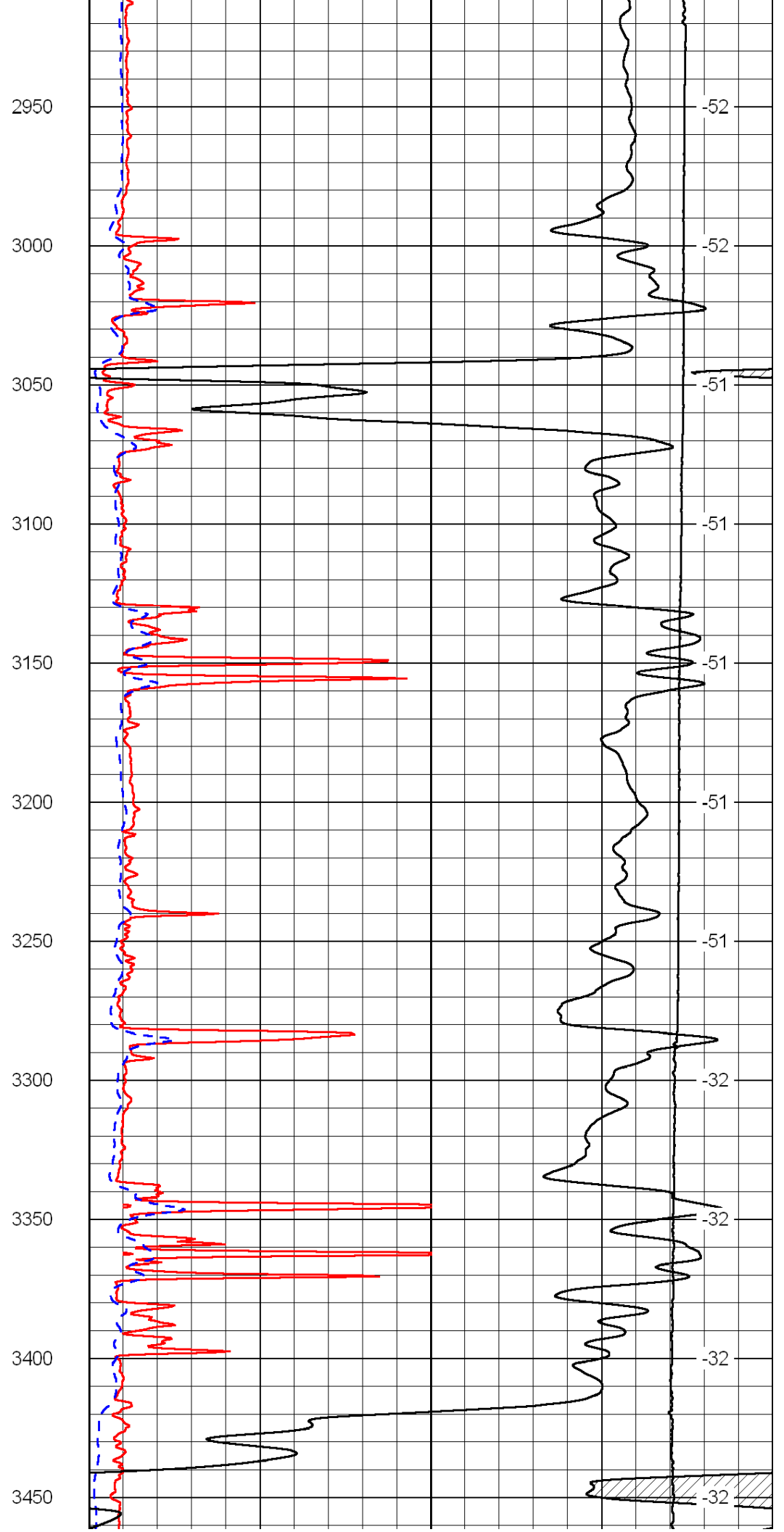
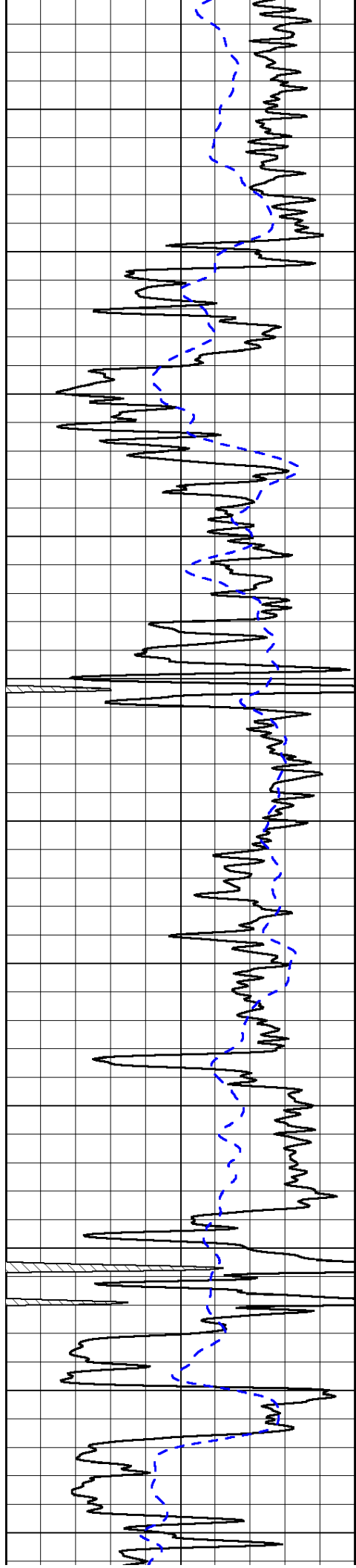


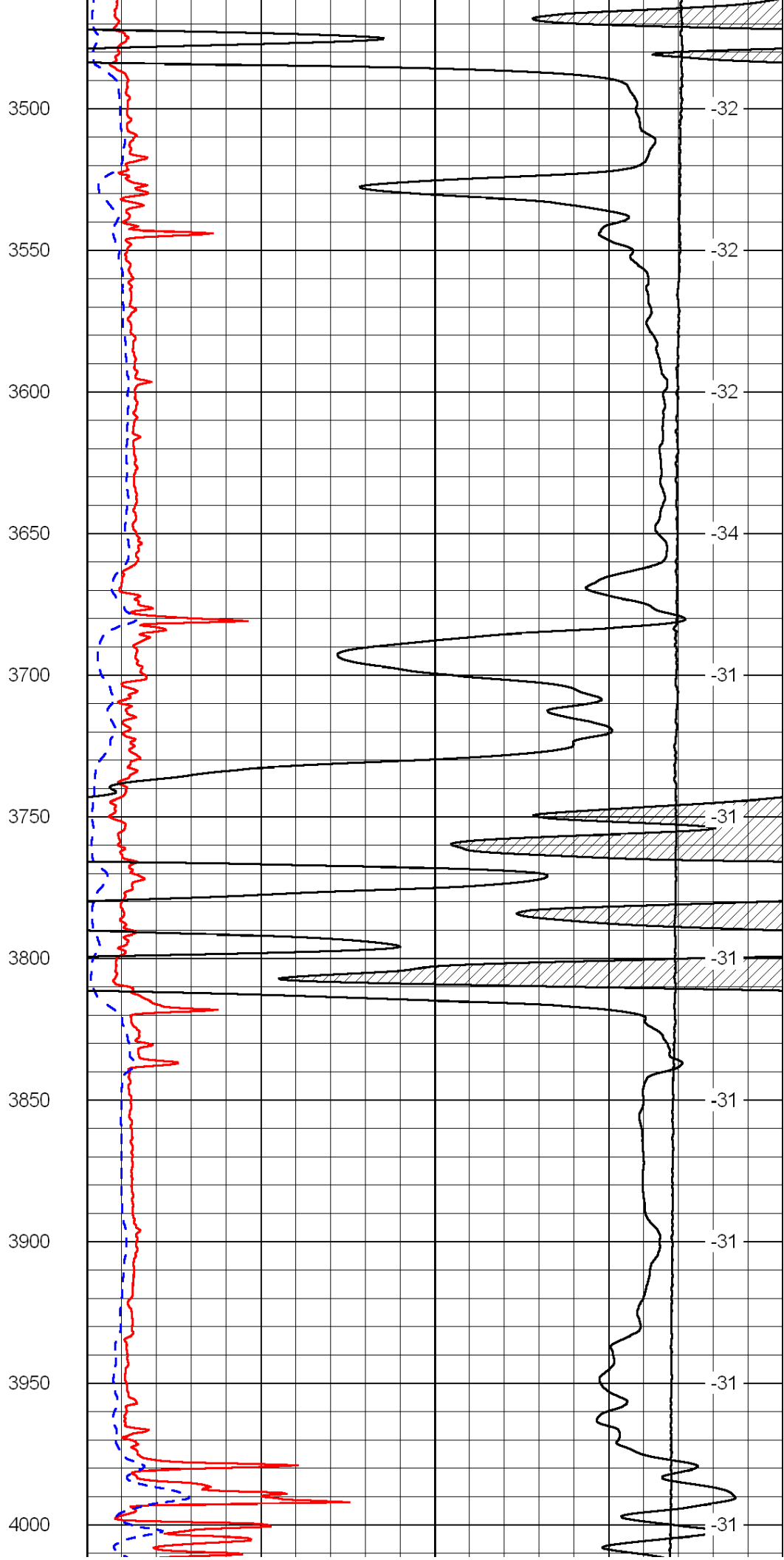
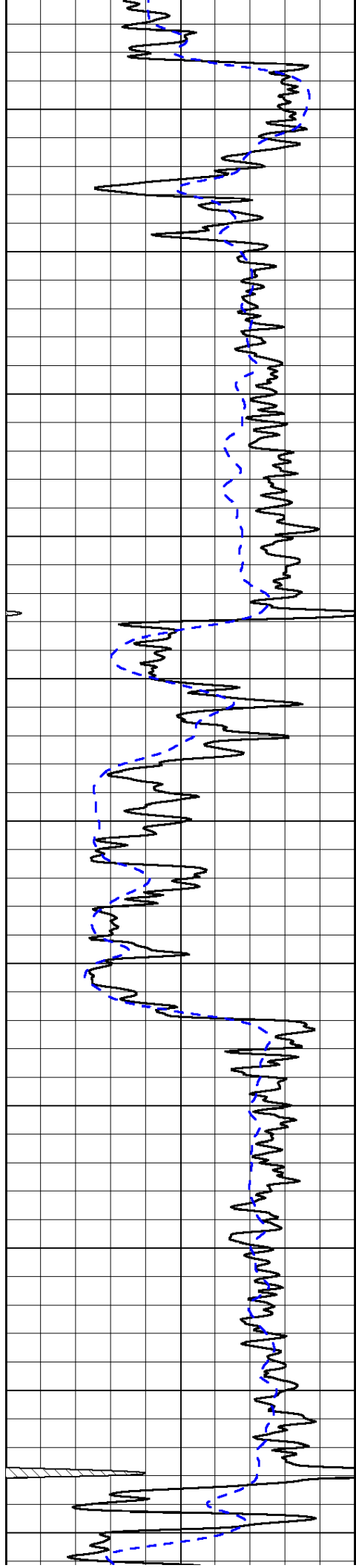




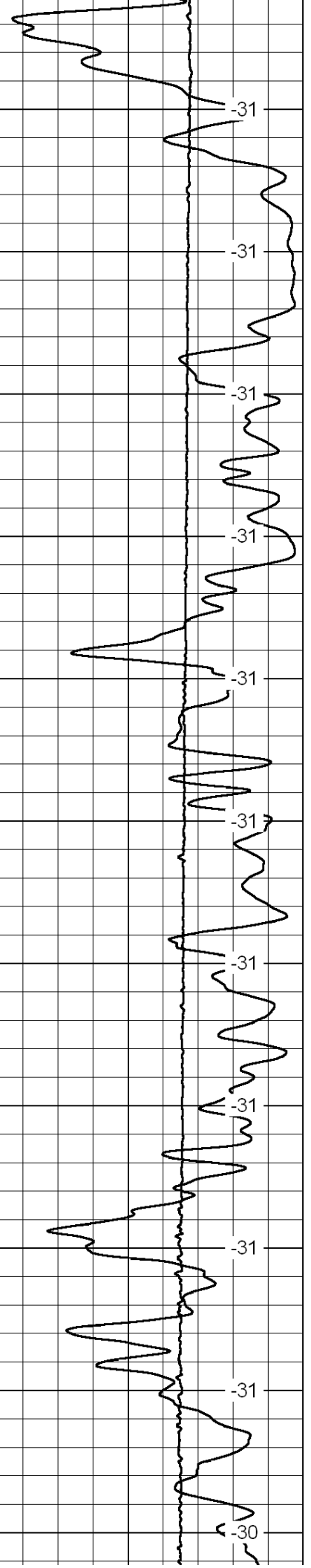
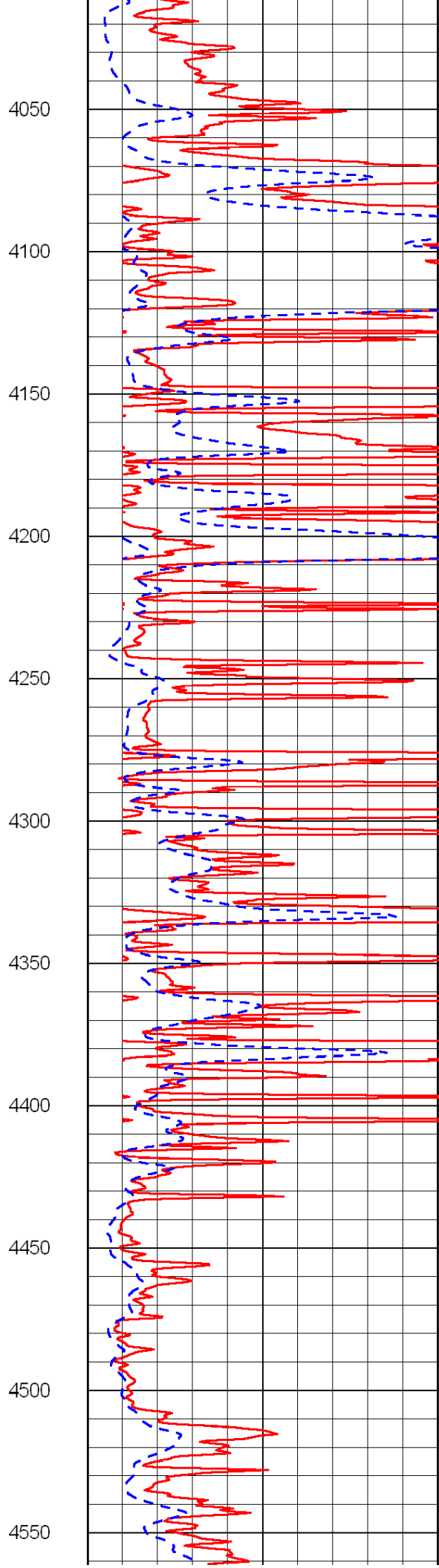
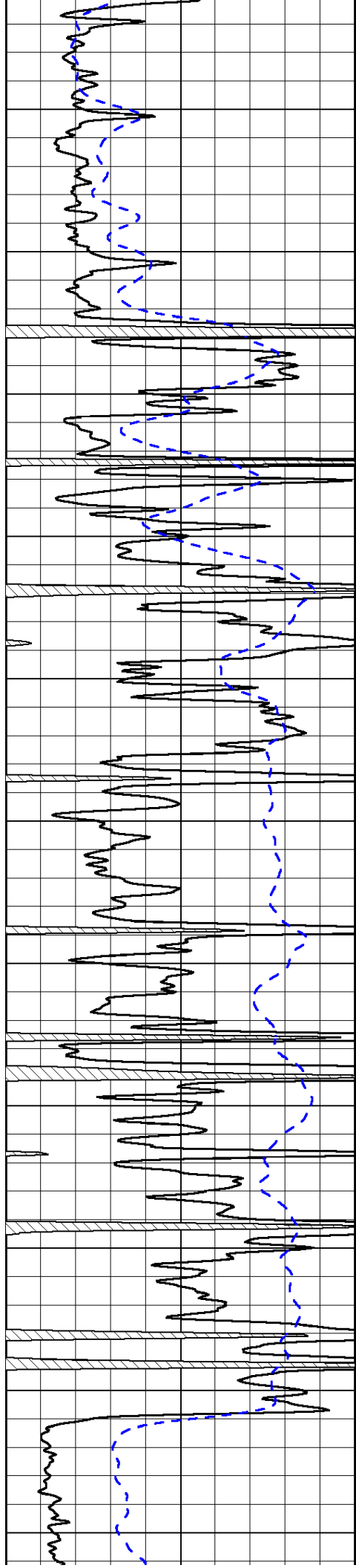


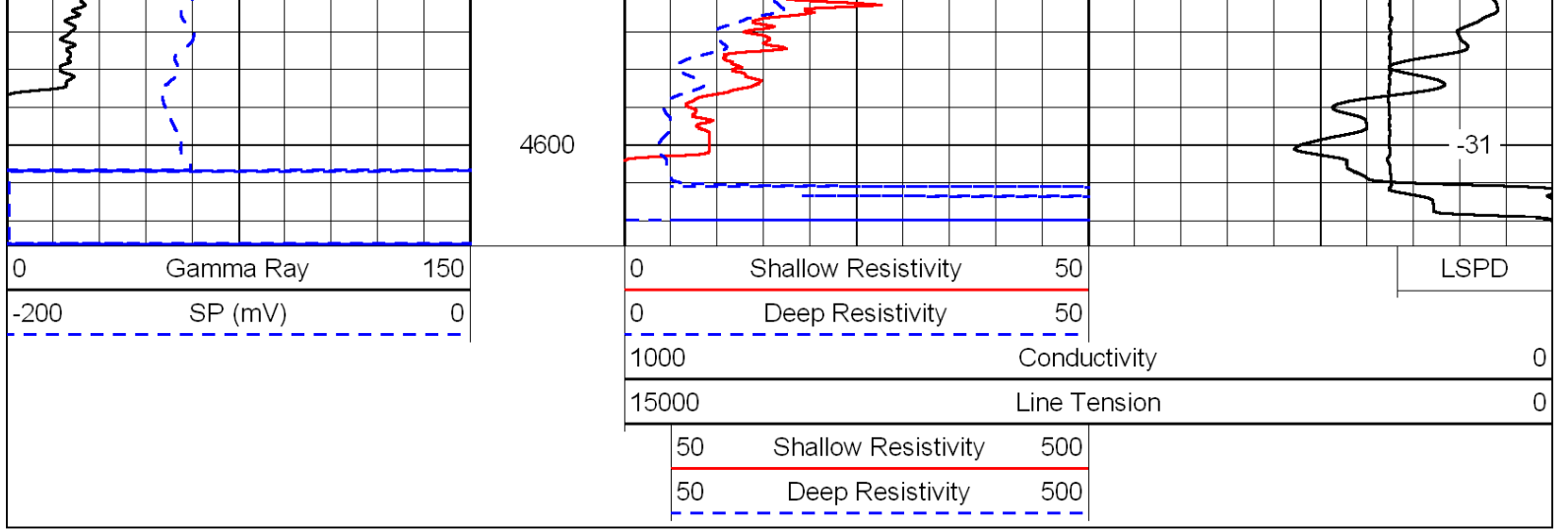




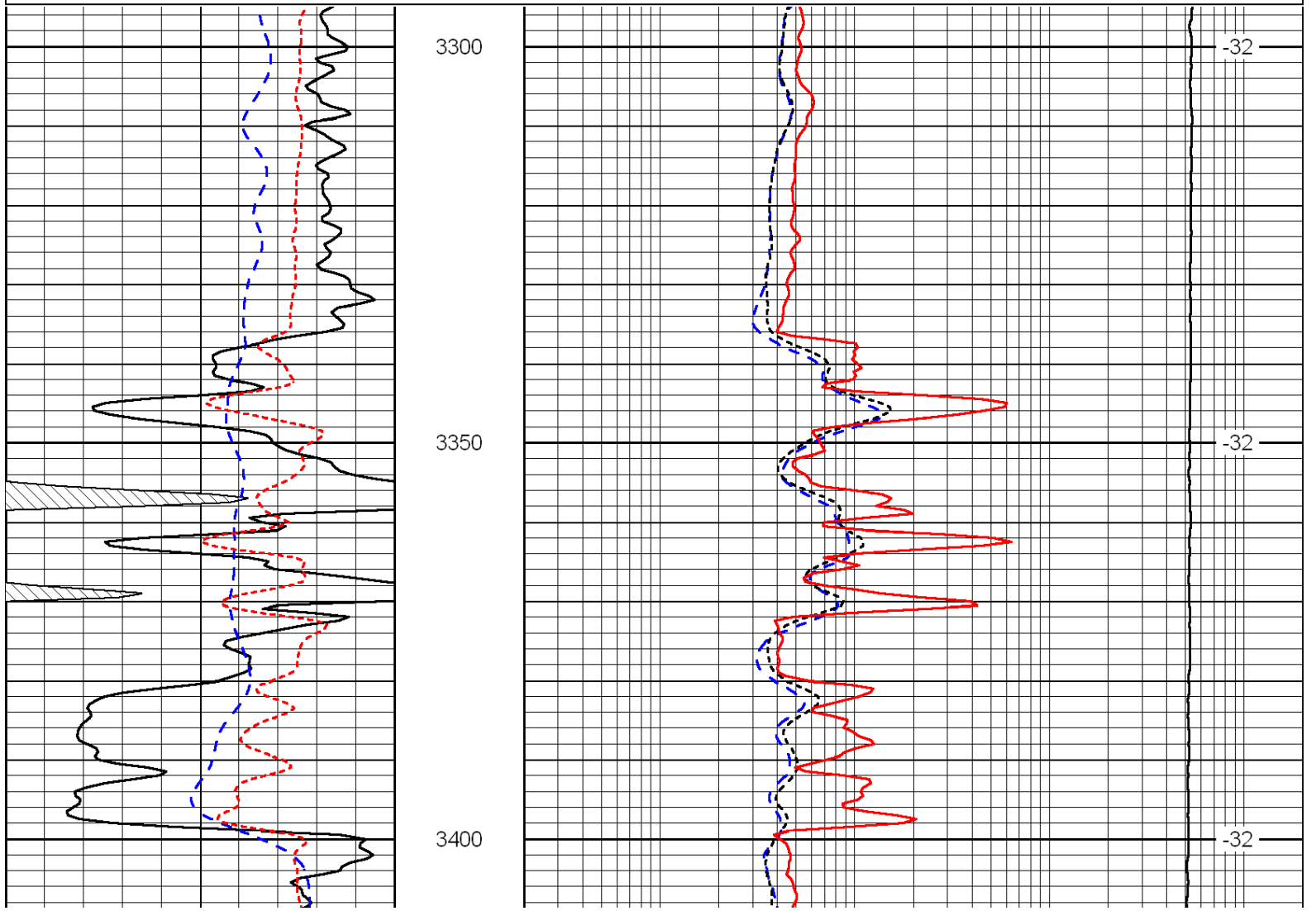
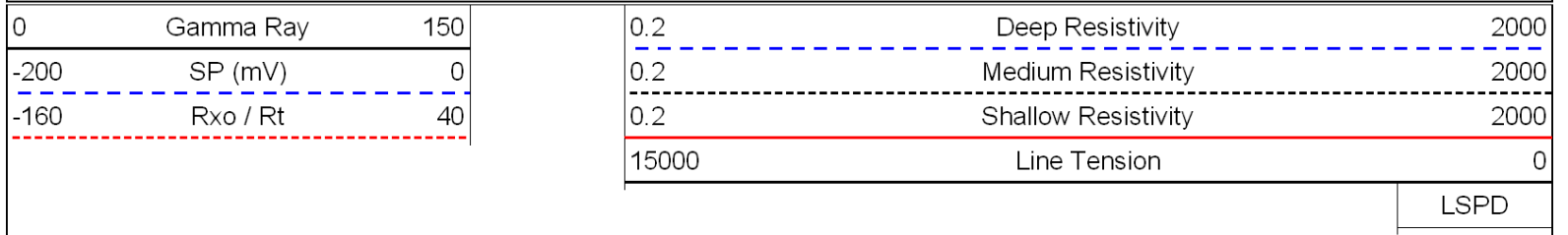


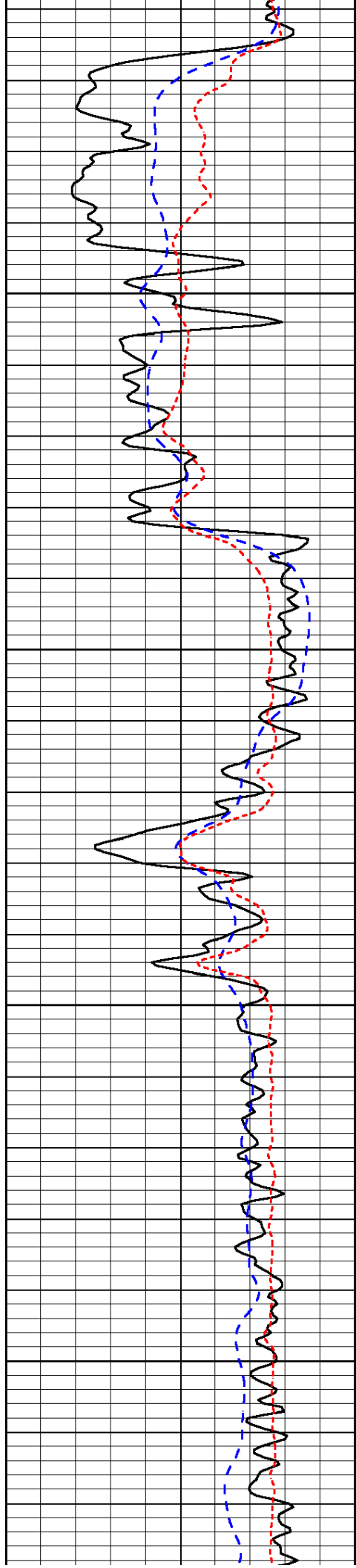






Database File: c:\warrior\data\griffin\_dena b no. 1\griffinhd.db  
 Dataset Pathname: dil/griff2in  
 Presentation Format: dil  
 Dataset Creation: Tue Sep 07 17:09:26 2010  
 Charted by: Depth in Feet scaled 1:240



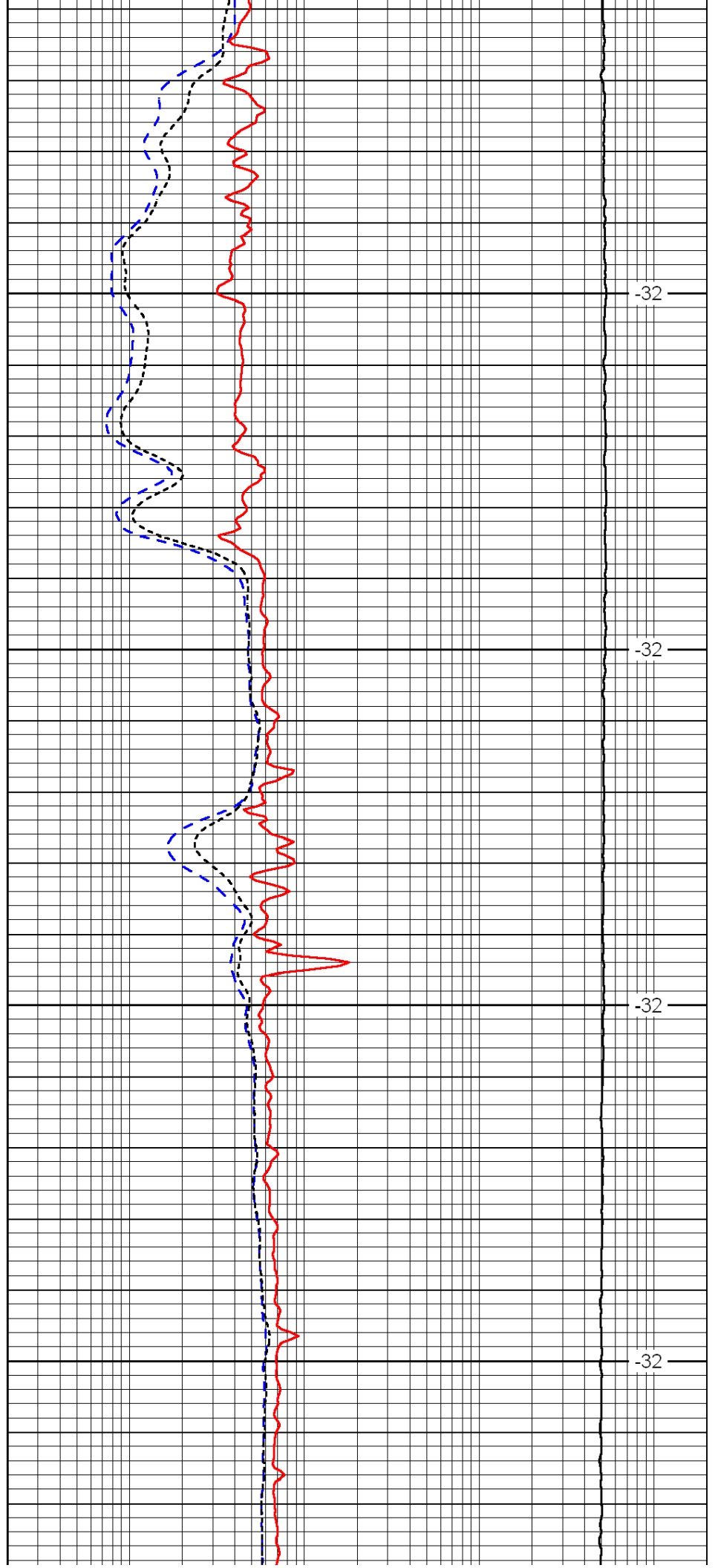


3450

3500

3550

3600

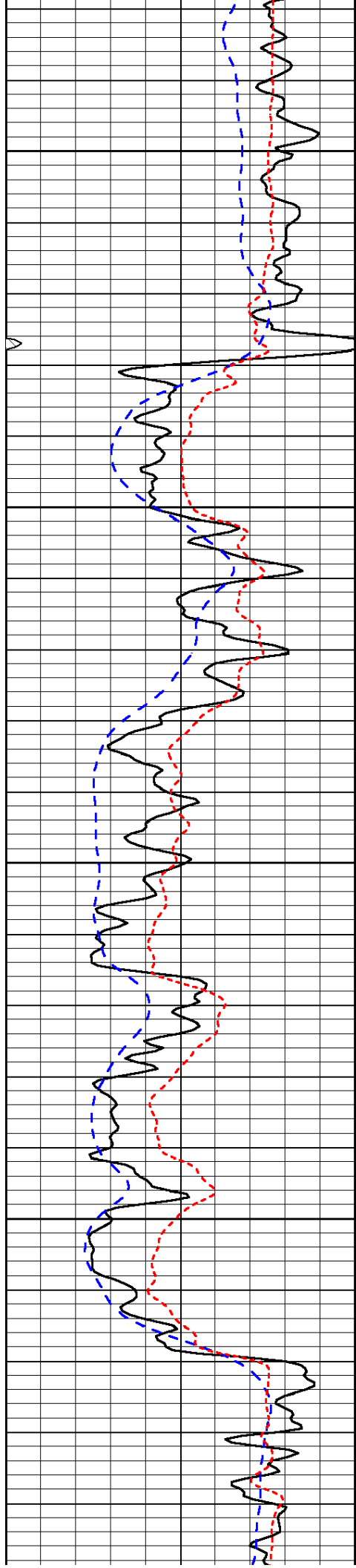


-32

-32

-32

-32

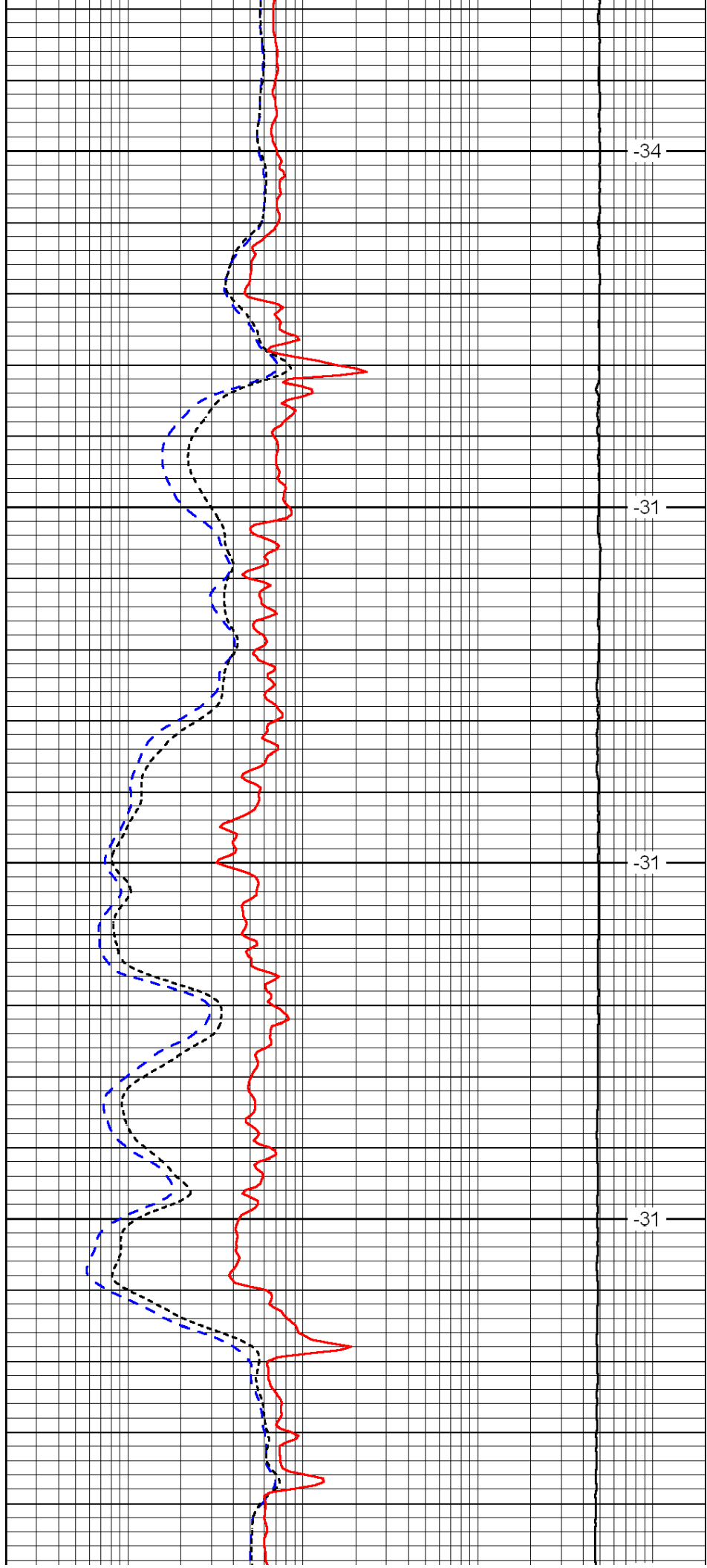


3650

3700

3750

3800

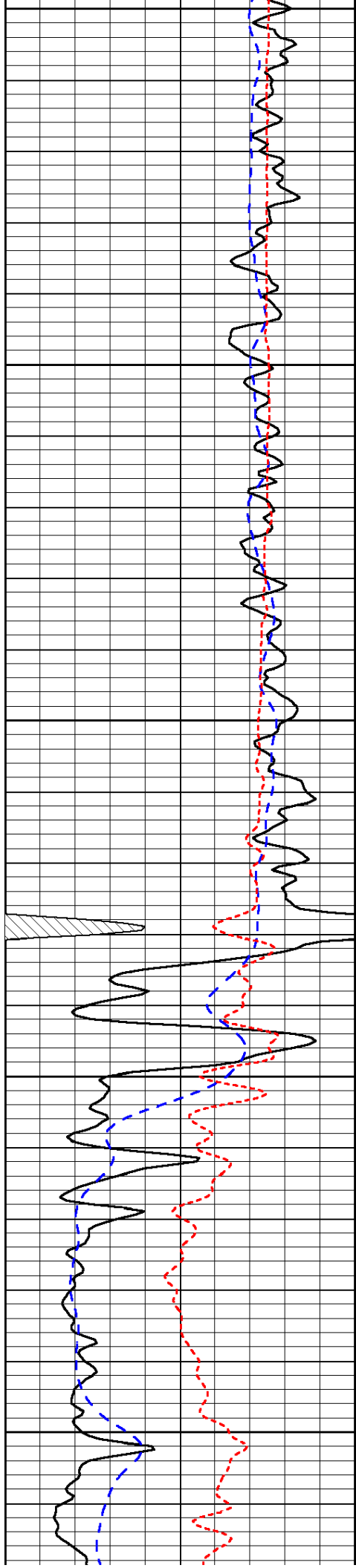


-34

-31

-31

-31



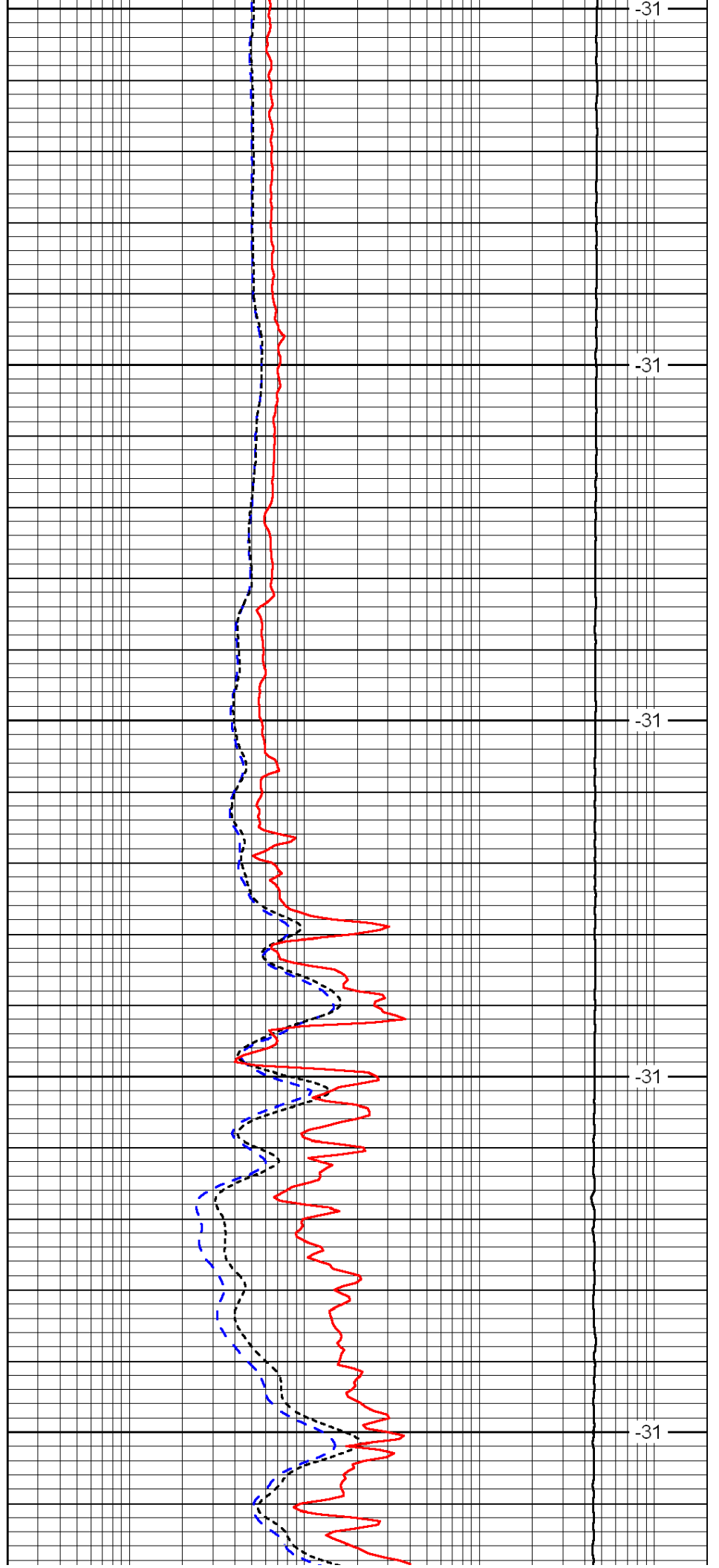
3850

3900

3950

4000

4050



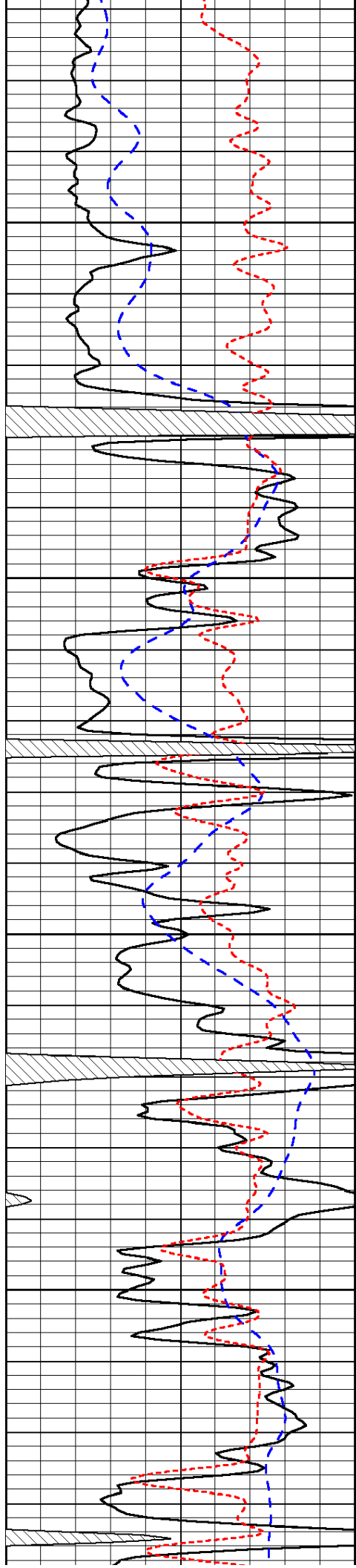
-31

-31

-31

-31

-31

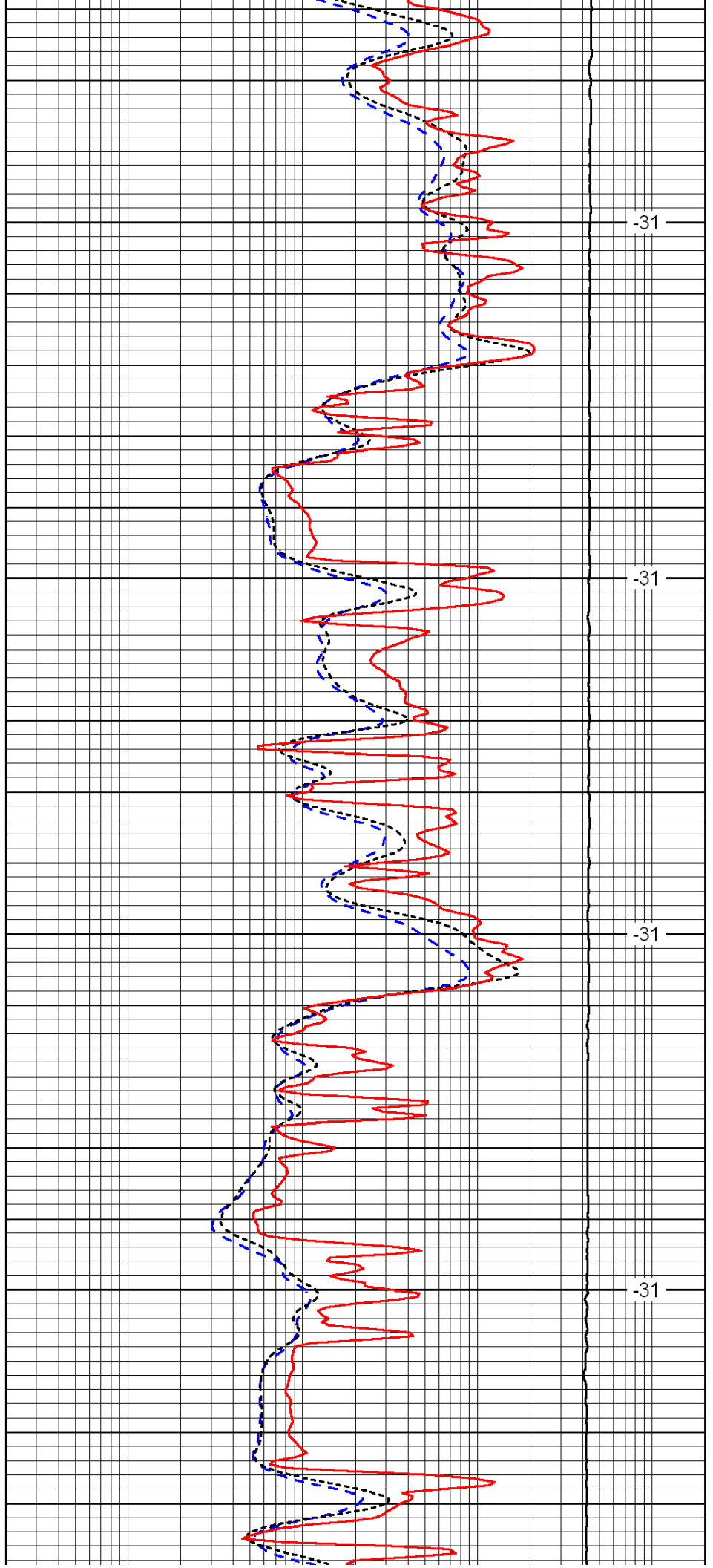


4100

4150

4200

4250

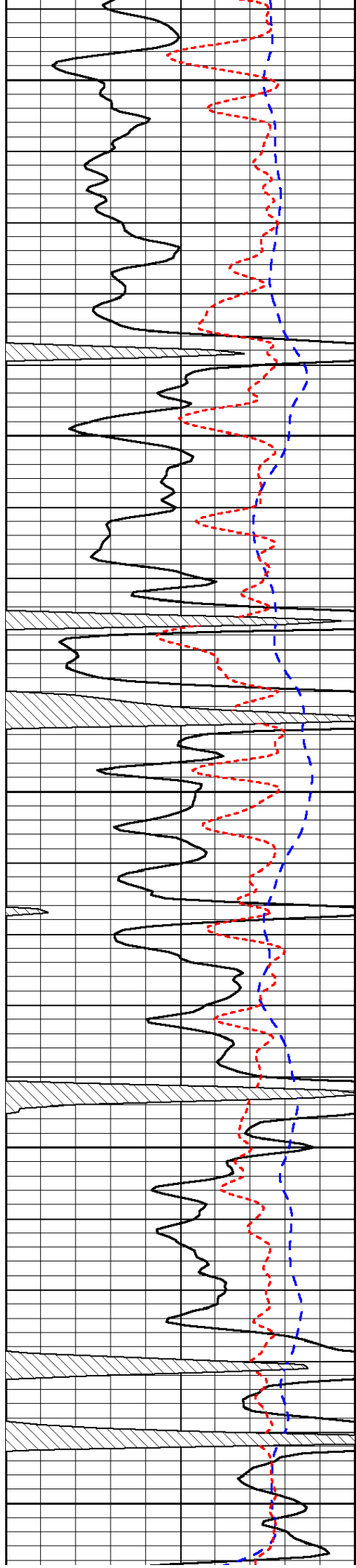


-31

-31

-31

-31



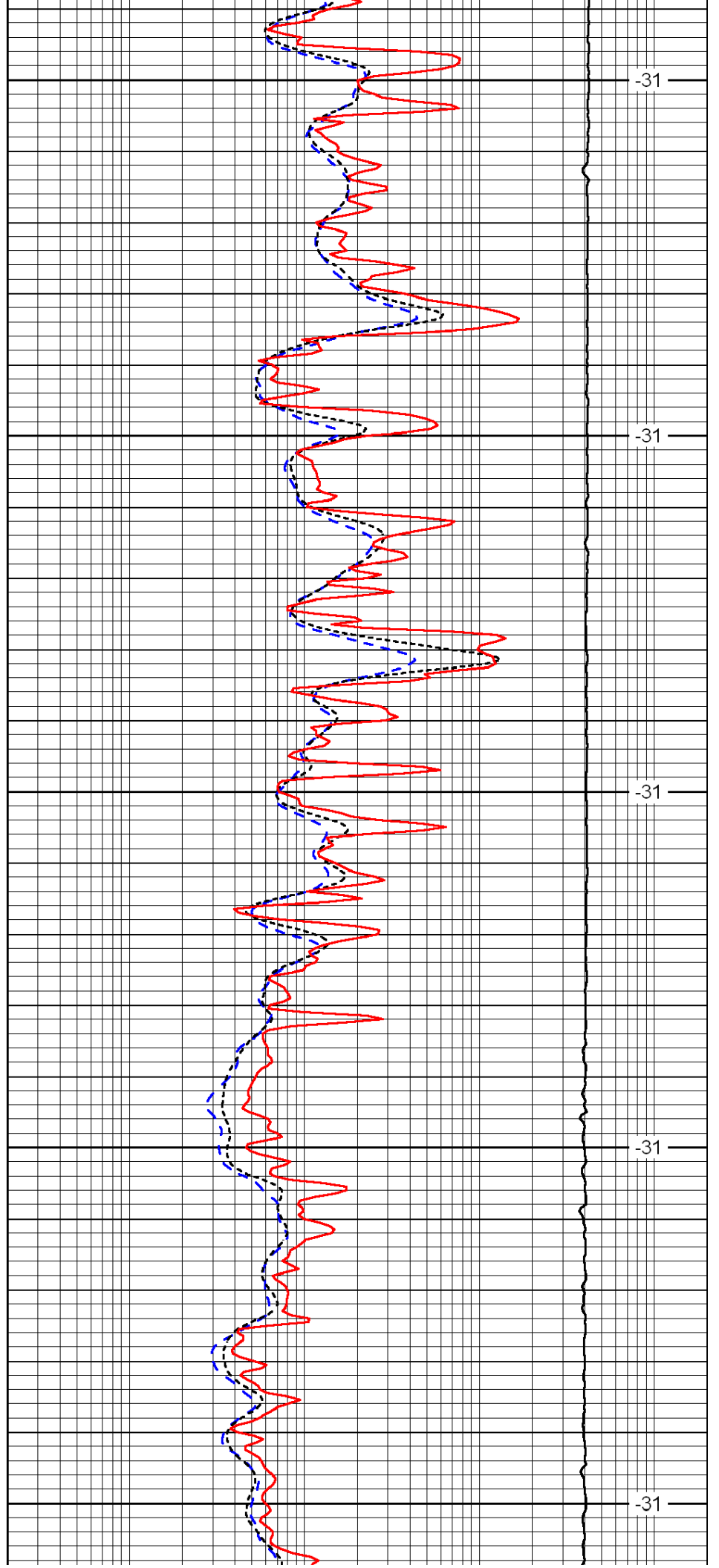
4300

4350

4400

4450

4500



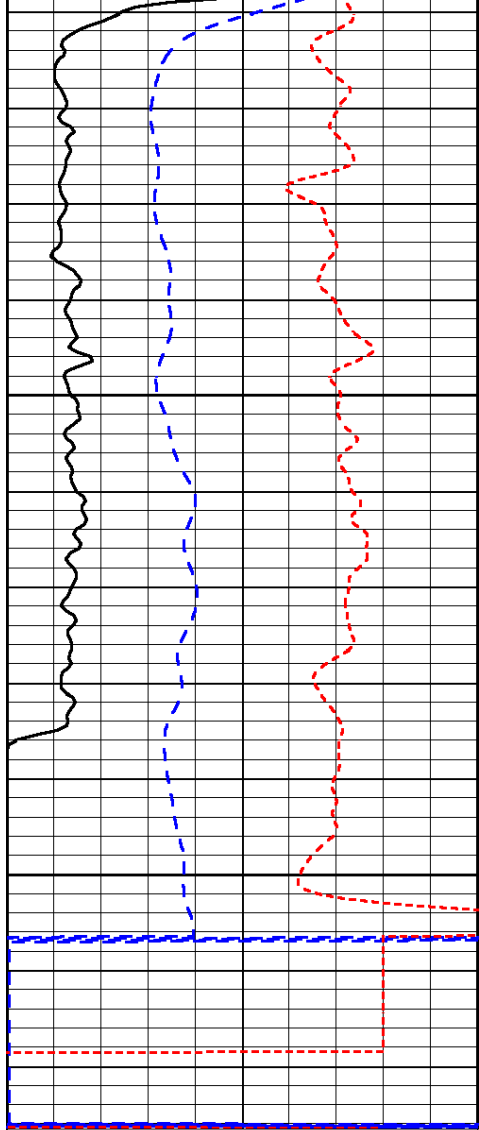
-31

-31

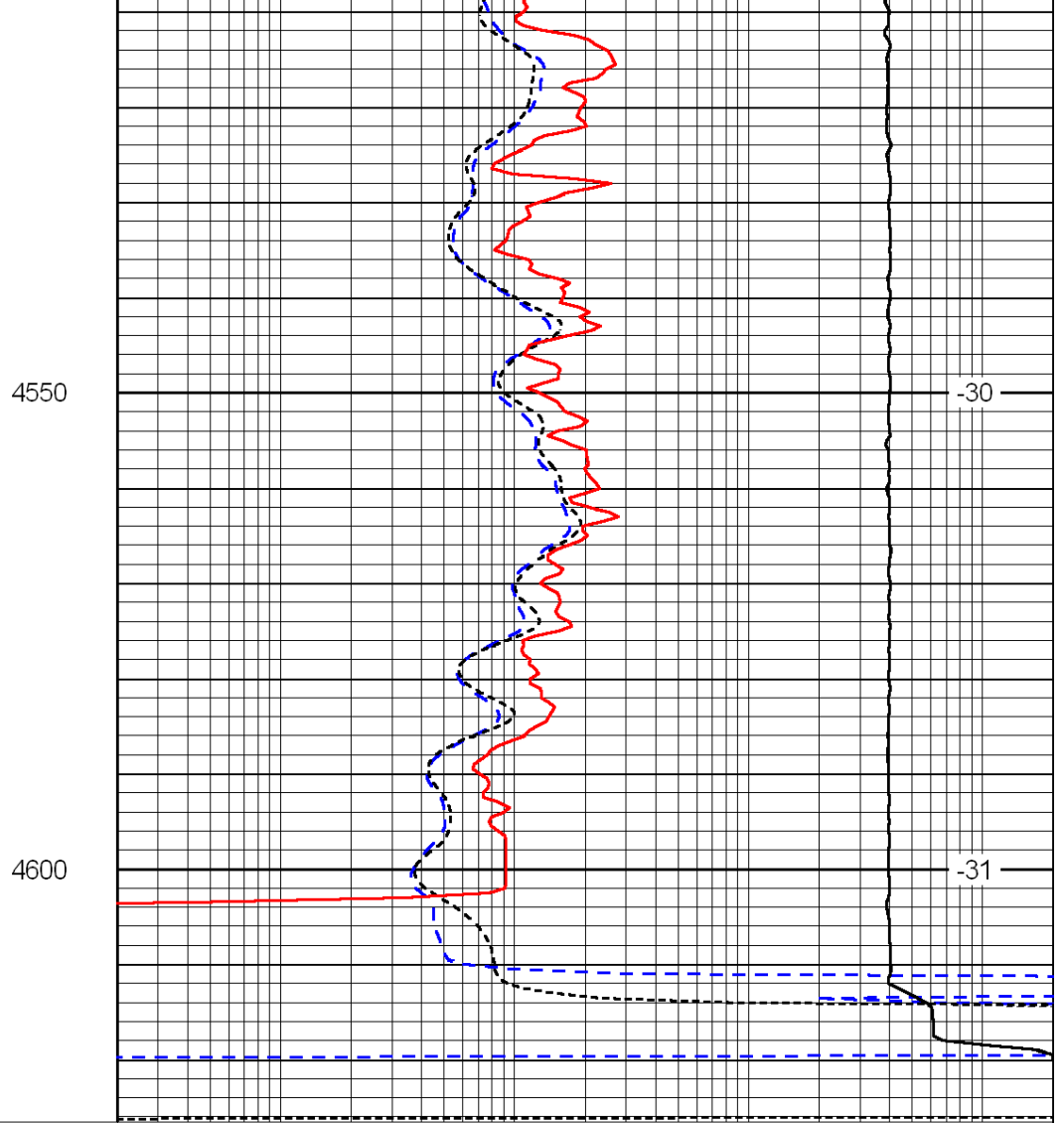
-31

-31

-31



0	Gamma Ray	150
-200	SP (mV)	0
-160	Rxo / Rt	40



0.2	Deep Resistivity	2000
0.2	Medium Resistivity	2000
0.2	Shallow Resistivity	2000
15000	Line Tension	0

LSPD