



MIDWEST SURVEYS
 LOGGING - PERFORATING - CONSULTING SERVICES
 P.O. Box 68, Osawatomie, KS 66064
 913 / 755 - 2128

GAMMA RAY / NEUTRON / CCL

API # 15-121-28,882

File No.

Company **Future Investment Properties, LLC.**
 Well **Middaugh No. AI-46**
 Field **Black**
 County **Miami** State **Kansas**

Location **3520' FSL & 2900' FEL
 SE-NE-SE-NW**

Sec. **10** Twp. **19s** Rge. **24e**

Permanent Datum **GL** Elevation **NA**
 Log Measured From **GL**
 Drilling Measured From **GL**

Other Services
Perforate
 Elevation
 K.B. NA
 D.F. NA
 G.L. NA

Date **6-01-2011**

Run Number **One**

Depth Driller **188.0**

Depth Logger **144.0**

Bottom Logged Interval **142.0**

Top Log Interval **20.0**

Fluid Level **Full**

Type Fluid **Water**

Density / Viscosity **NA**

Salinity - PPM Cl **NA**

Max Recorded Temp **NA**

Estimated Cement Top **0.0**

Equipment No. **104** Location **Osawatomie**

Recorded By **Gary Wandsch**

Witnessed By **Doug Evans**

RUN **BORE-HOLE RECORD**

No. **BIT** **FROM** **TO** **SIZE** **WGHT.** **FROM** **TO**

One **12.25"** **0.0** **45.0** **8.625"** **0.0** **45.0**

Two **6.75"** **45.0** **188.0** **4.50"** **0.0** **172.0**

Baffle **Set** **At** **144.3**

CASING RECORD

<<< Fold Here >>>

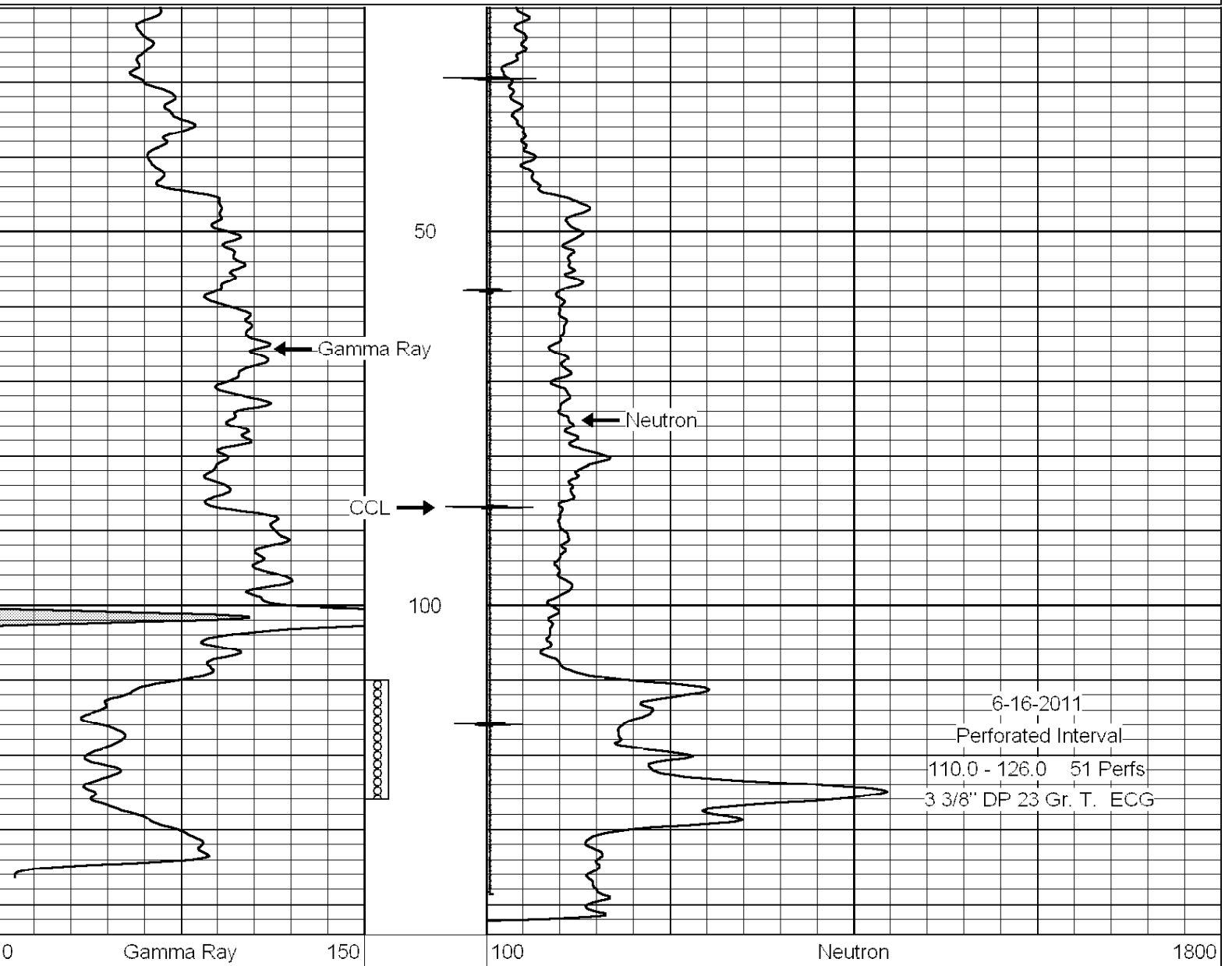
All interpretations are opinions based on inferences from electrical or other measurements and we cannot and do not guarantee the accuracy or correctness of any interpretation, and we shall not, except in the case of gross or willful negligence on our part, be liable or responsible for any loss, costs, damages, or expenses incurred or sustained by anyone resulting from any interpretation made by any of our officers, agents or employees. These interpretations are also subject to our general terms and conditions set out in our current Price Schedule.

Comments

Drilling Contractor :
Town Oilfield Services

Database File: **mdgh46ai.db**
 Dataset Pathname: **pass1**
 Presentation Format: **gr-n-ccl**
 Dataset Creation: **Wed Jun 01 13:03:39 2011 by Log Warrior Version 6.6**
 Charted by: **Depth in Feet scaled 1:240**

0	Gamma Ray	150	100	Neutron	1800
150	Gamma Ray	300			



0	Gamma Ray	150	100	Neutron	1800
150	Gamma Ray	300			