



Green Country Wireline

GAMMA RAY
CEMENT BOND
CCL VDL

Company JONES & BUCK
Well LEMMON JBD # 8
Field ELGIN
Country CHAUTAUQUA
State/Prv KANSAS

Company JONES & BUCK DEVELOPEMENT
Well LEMMON JBD # 8
Field ELGIN
Country CHAUTAUQUA State/Prv KANSAS

Location NW SE SW NW
3110' FSL & 4460' FEL
26 34S 10E
Permanent Datum G.L. Elevation 1020'
Log Measured From G.L.
Drilling Measured From G.L. Elevation
K.B. ---
D.F. ---
G.L. 1020'

Date	03/22/11
Run Number	ONE
Depth Driller	1725'
Depth Logger	1681'
Bottom Logged Interval	1675'
Top Log Interval	SURFACE
Open Hole Size	WATER
Type Fluid	---
Density / Viscosity	---
Max Recorded Temp.	---
Estimated Cement Top	SURFACE
Time Well Ready	---
Time Logger on Bottom	---
Equipment Number	1
Location	DEWEY
Recorded By	T GRAY
Witnessed By	M JONES

Run Number	Bit	From	To	Size	Weight	From	To
Borehole Record							
Tubing Record							

Casing Record	Size	Wgt/Ft	Top	Bottom
Surface String	8 5/8"		SURFACE	40'
Prot. String				
Production String	4.5"		SURFACE	1684'

<<< Fold Here >>>

All interpretations are opinions based on inferences from electrical or other measurements and we cannot and do not guarantee the accuracy or correctness of any interpretation, and we shall not, except in the case of gross or willful negligence on our part, be liable or responsible for any loss, costs, damages, or expenses incurred or sustained by anyone resulting from any interpretation made by any of our officers, agents or employees. These interpretations are also subject to our general terms and conditions set out in our current Price Schedule.

Comments

API#: 15-019-27037-00-00

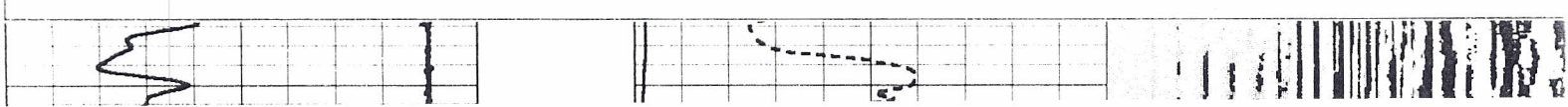


Green Country Wireline

GAMMA RAY CEMENT BOND

Database File: d:\data\jonesb~1\lemmon8.db
Dataset Pathname: lemmon8/run1/pass1
Presentation Format: cbl_dr
Dataset Creation: Tue Mar 22 07:18:38 2011 by Log Warrior Version 6.6
Charted by: Depth in Feet scaled 1:240

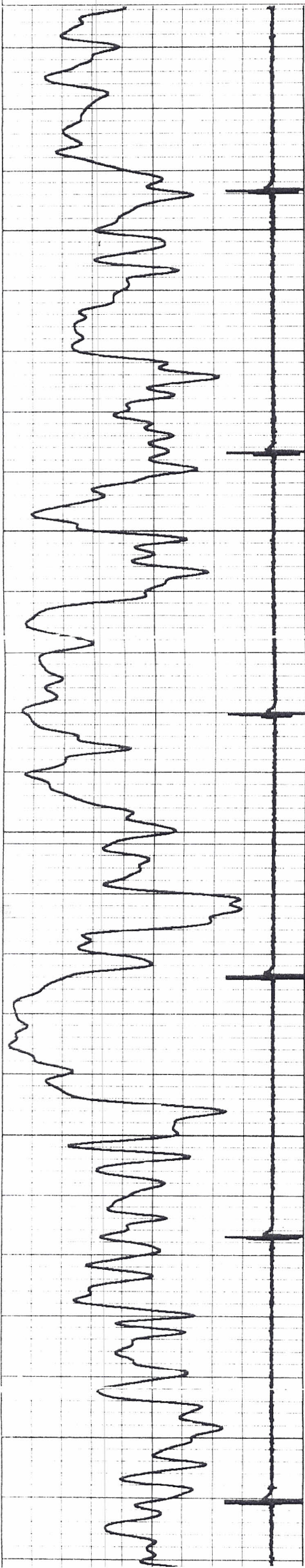
9	Collar Locator	-1	-1	Amplitude (mV)	100	200	Variable Density	1200
0	Gamma Ray (GAPI)	60	750	Travel Time (usec)	200			



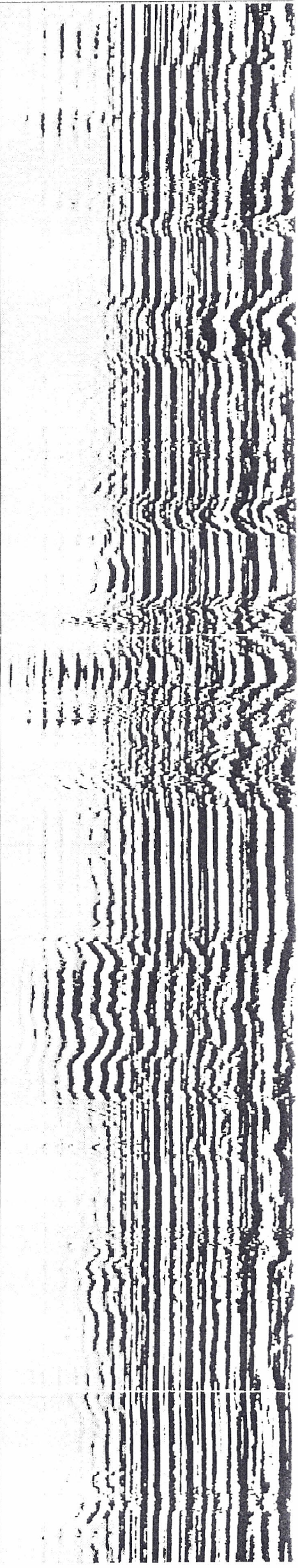
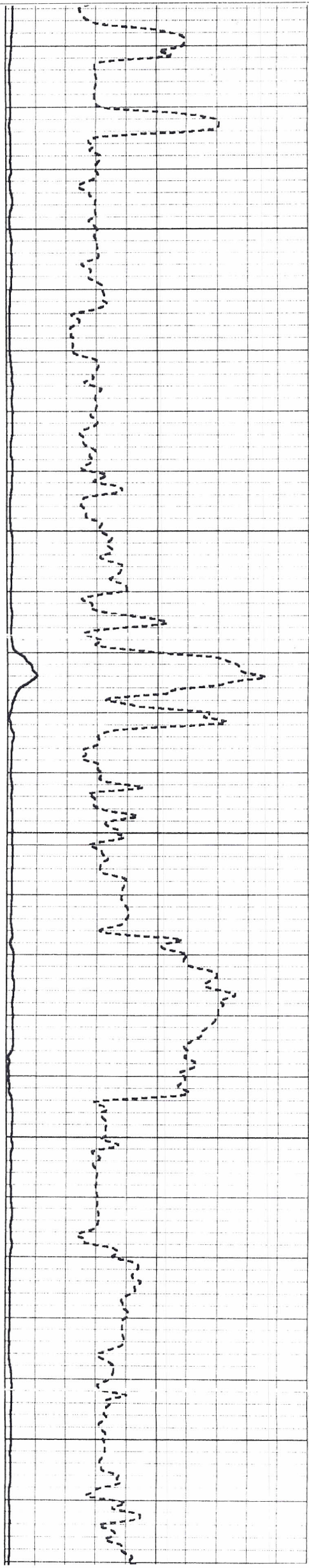
9	Collar Locator	-1
0	Gamma Ray (GAPI)	60

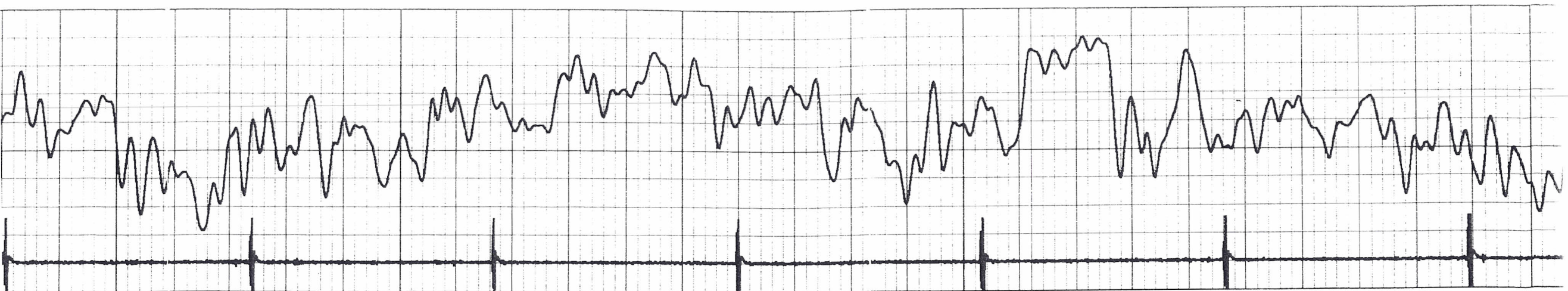
-1	Amplitude (mV)	100
750	Travel Time (usec)	200

200 Variable Density 1200

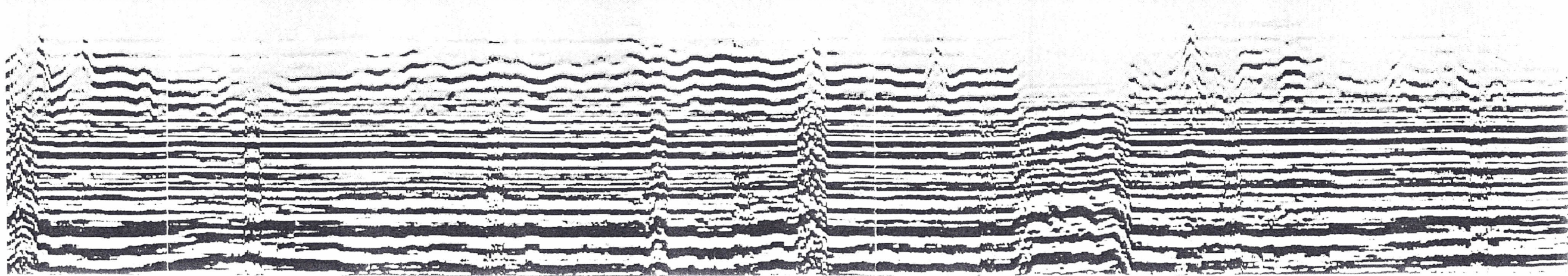
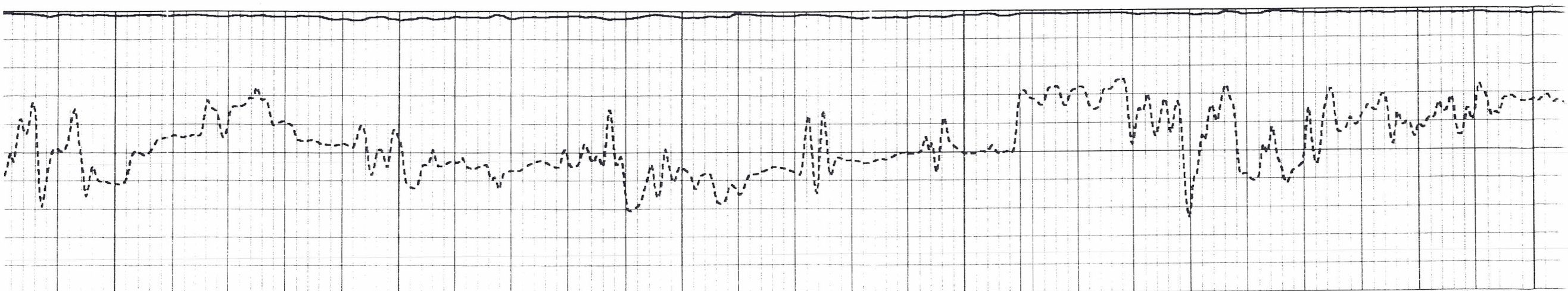


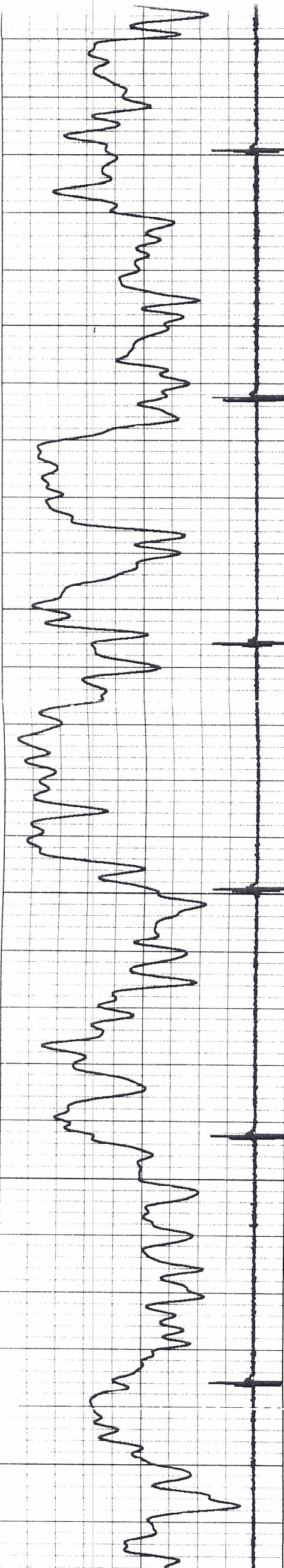
50
100
150
200
250





500 450 400 350 300 250





500

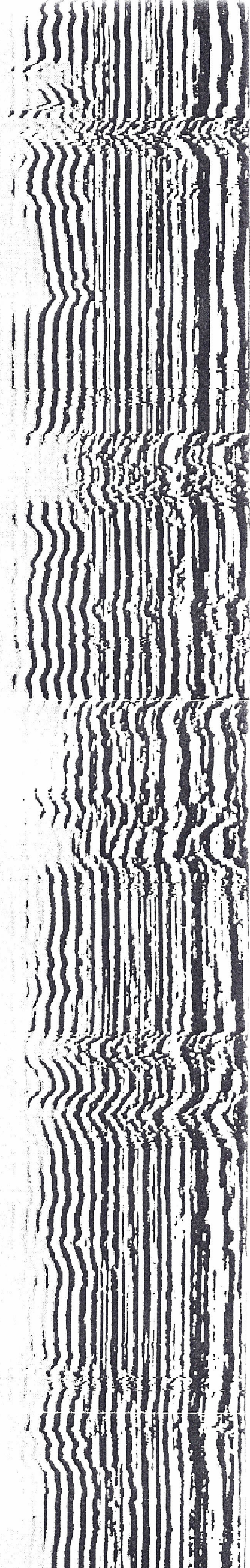
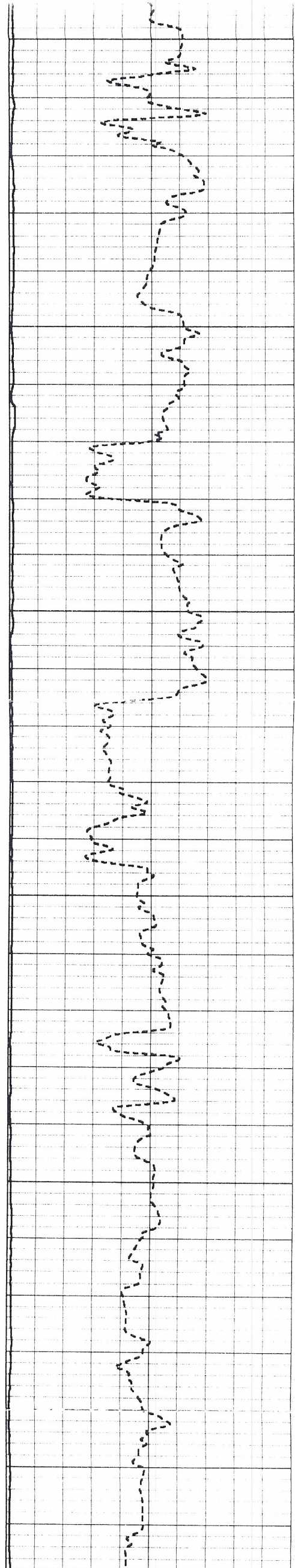
550

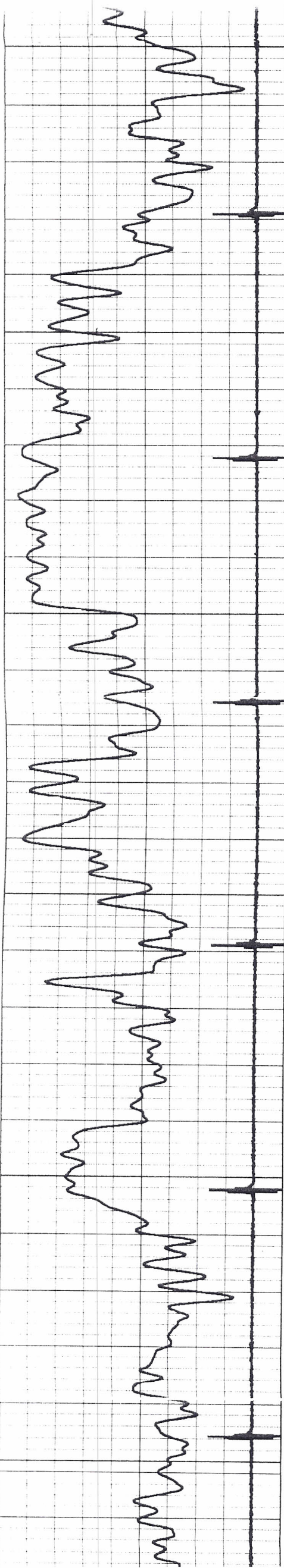
600

650

700

750





750

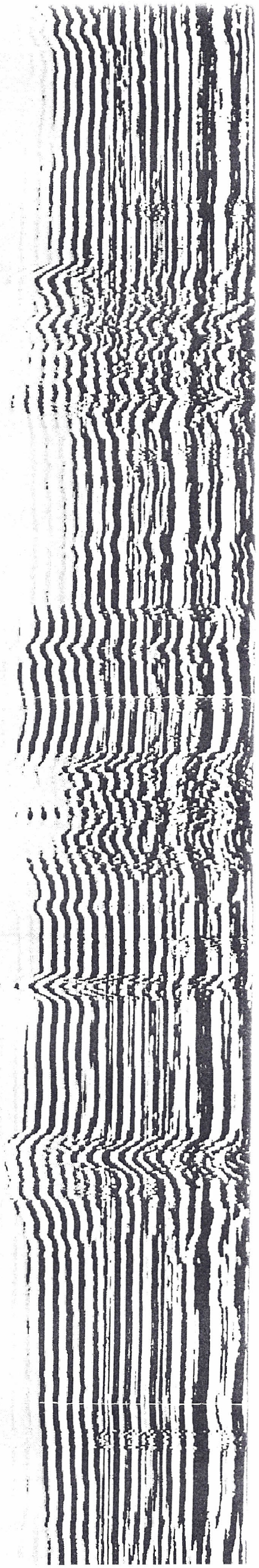
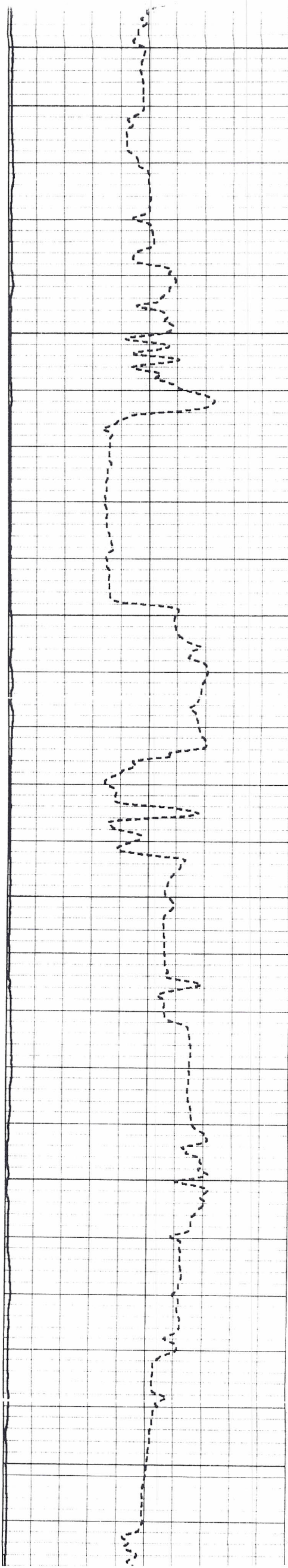
800

850

900

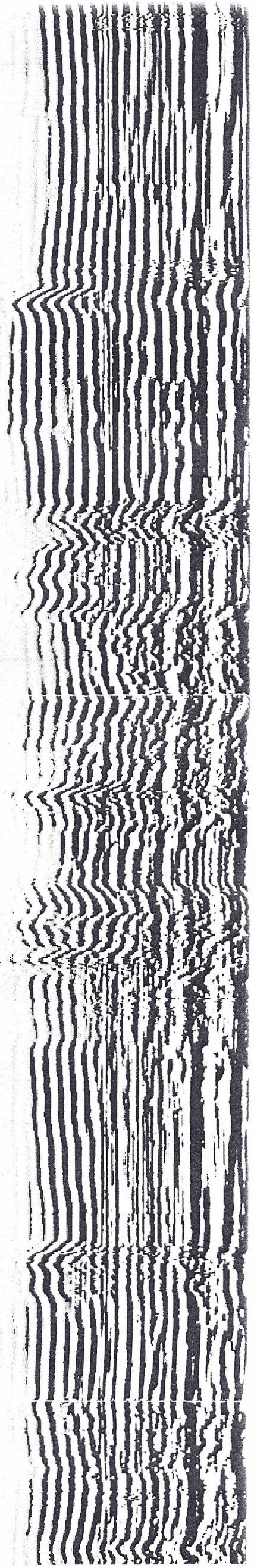
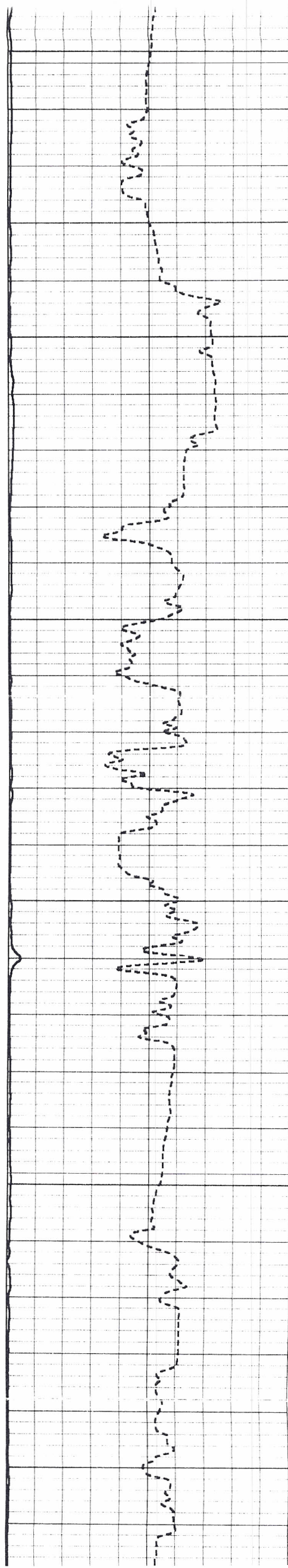
950

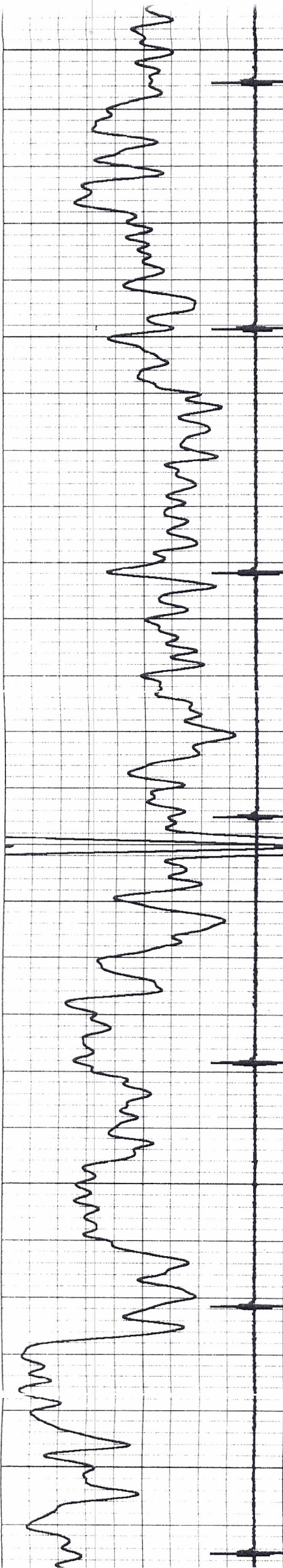
1000





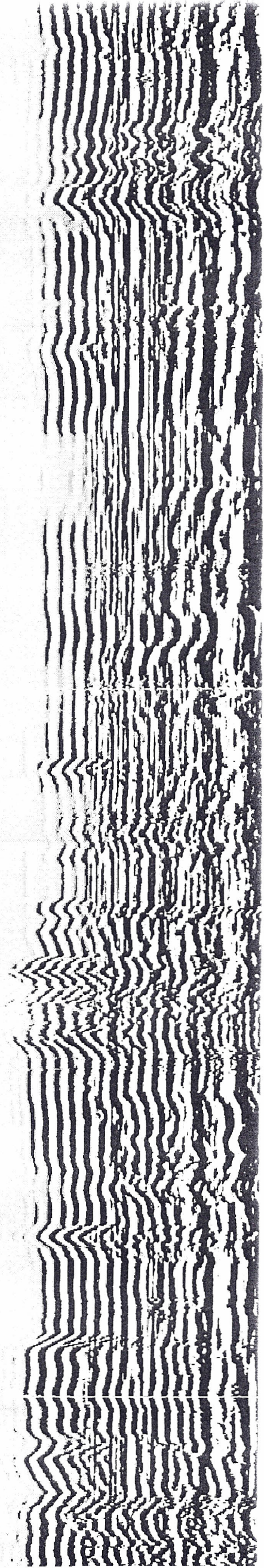
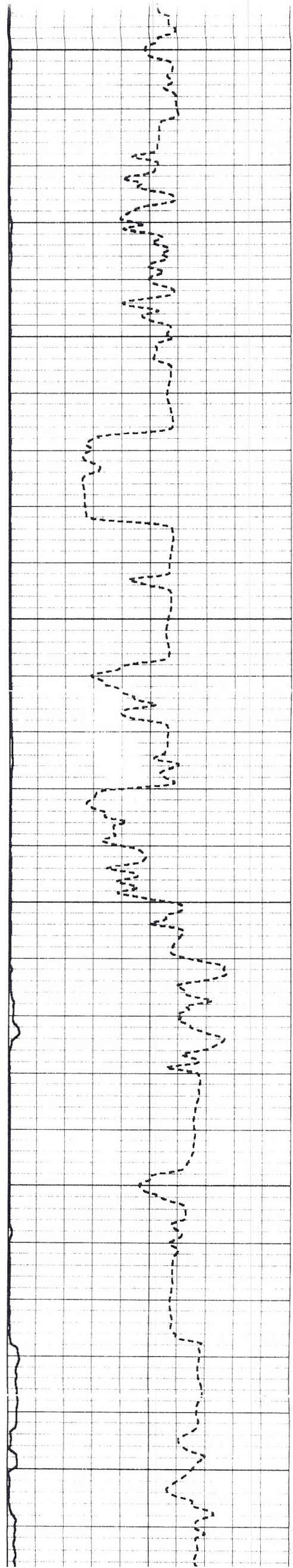
1000
1050
1100
1150
1200
1250

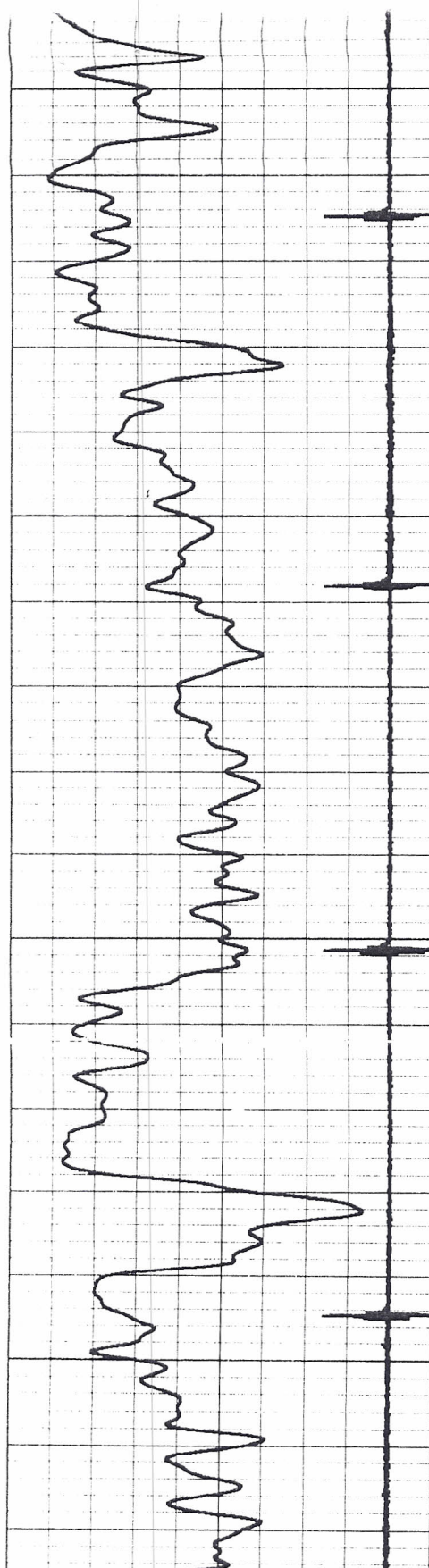




1250
1300
1350
1400
1450
1500

1447'-1455'
16 shots
3-22-2011





Gamma Ray RD 1675'

9	Collar Locator	-1
0	Gamma Ray (GAPI)	60

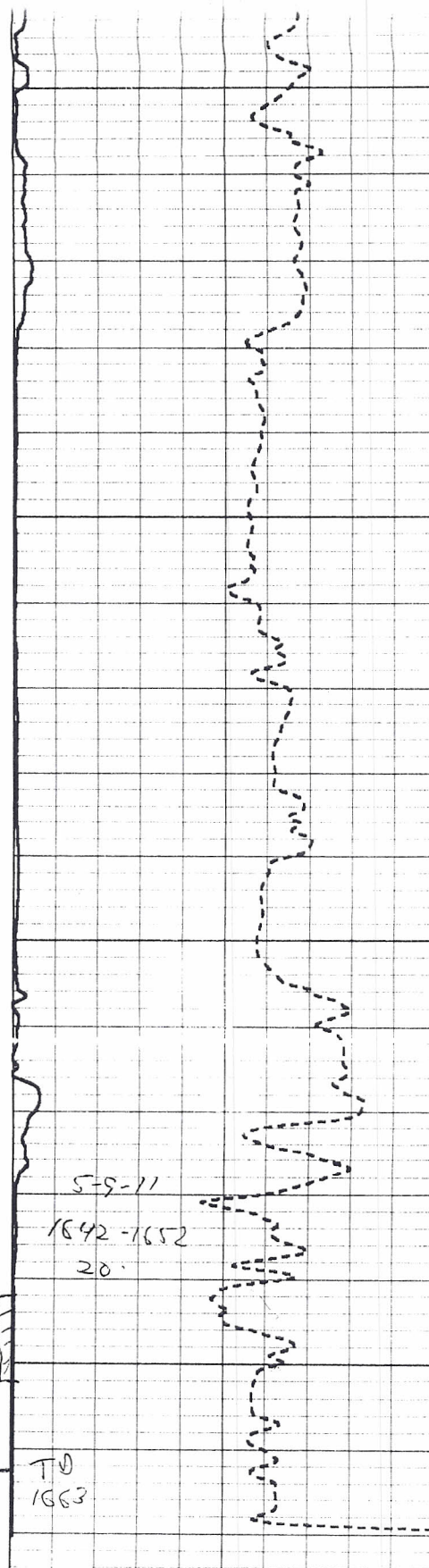
1500

1550

1600

1650

LEMMON JBD # 8

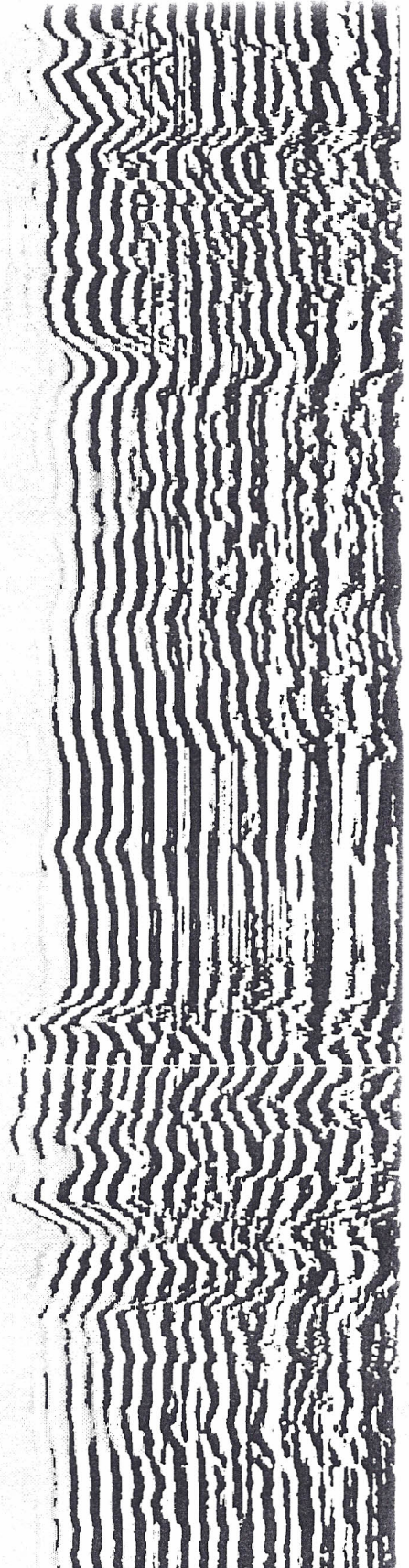


5-9-11
1642-1652
20'

T.D.
1663

T.D. 1681'

-1	Amplitude (mV)	100
750	Travel Time (usec)	200



CBL RD 1669'

Variable Density 1200