

HALLIBURTON

MICRO LOG

COMPANY **VAL ENERGY INC**
 WELL **MYRTLE 3-31**
 FIELD **UNKNOWN**
 COUNTY **BARBER**
 STATE **KANSAS**

COMPANY **VAL ENERGY INC**
 WELL **MYRTLE 3-31**
 FIELD **UNKNOWN**
 COUNTY **BARBER**
 STATE **KANSAS**

API No. 15-007-23711
 Location 495 FNL & 2970 FEL

Other Services:
 DSN/SDL
 ACRT

Sect. 31 Twp. 33S Rge. 10W

Permanent Datum GL Elev. 1468.0 ft
 Log measured from KB D.F. 1478.0 ft
 Drilling measured from KB G.L. 1468.0 ft
 11.0 ft above perm. Datum

Date 08-Jun-11

Run No. ONE

Depth - Driller 4992.00 ft

Depth - Logger 4984.0 ft

Bottom - Logged Interval 4962.0 ft

Top - Logged Interval 3550.0 ft

Casing - Driller 8.625 in @ 227.0 ft

Casing - Logger 223.0 ft

Bit Size 7.875 in @

Type Fluid in Hole WATER BASED MUD @

Density 9.2 ppq 58.00 s/qt

PH 10.50 pH 9.6 cpm

Source of Sample FLOW LINE

Rm @ Meas. Temperature 0.409 ohmm @ 92.00 degF @

Rmf @ Meas. Temperature 0.36 ohmm @ 89.00 degF @

Rmc @ Meas. Temperature 0.450 ohmm @ 90.00 degF @

Source Rmf Rmc MEAS MEAS @

Rm @ BHT 0.32 ohmm @ 120.0 degF @

Time Since Circulation 3.0 hr @

Time on Bottom 08-Jun-11 06:52 @

Max. Rec. Temperature 120.0 degF @ 4984.0 ft @

Equipment Location 10546896 LIBERAL @

Recorded By C. PARKER @

Witnessed By Z STEWART @

Fold here

Service Ticket No.: 8231875 API Serial No.: 15-007-23711 PGM Version: WL INSITE R3.2.0 (Build 7)

CHANGE IN MUD TYPE OR ADDITIONAL SAMPLE RESISTIVITY SCALE CHANGES

Date	Sample No.	Type Log	Depth	Scale Up Hole	Scale Down Hole
Depth-Driller					
Type Fluid in Hole					
Density	Viscosity				
Ph	Fluid Loss				

Source of Sample RESISTIVITY EQUIPMENT DATA

Run No.	Tool Type & No.	Pad Type	Tool Pos.	Other
Rm @ Meas. Temp @	ONE	MICRO P84	RUBBER	ADU
Rmf @ Meas. Temp. @				N/A
Rmc @ Meas. Temp. @				
Source Rmf Rmc				
Rm @ BHT @				
Rmf @ BHT @				
Rmc @ BHT @				

EQUIPMENT DATA

GAMMA		ACOUSTIC		DENSITY		NEUTRON	
Run No.	ONE	Run No.		Run No.		Run No.	
Serial No.	11050378	Serial No.		Serial No.		Serial No.	
Model No.	GTET	Model No.		Model No.		Model No.	
Diameter	3.625	No. of Cent.		Diameter		Diameter	
Detector Model No.	T-102	Spacing		Log Type		Log Type	
Type	SCINT			Source Type		Source Type	
Length	8"	LSA [Y/N]		Serial No.		Serial No.	
Distance to Source	10'	FWDA [Y/N]		Strength		Strength	

LOGGING DATA

GENERAL			GAMMA		ACOUSTIC		DENSITY		NEUTRON		
Run No.	Depth		Speed	Scale		Scale		Matrix	Scale		Matrix
	From	To	ft/min	L	R	L	R		L	R	
ONE	TD	CSG	REC	0	150						

DIRECTIONAL INFORMATION

Maximum Deviation @ KOP @

Remarks: ANNULAR HOLE VOLUME CALCULATED FOR 5.5 INCH CASING

CHLORIDES 3000 PPM: LCM 3 #/BBL

GPS COORDINATES: 37° 08' N, 98° 27' W

TODAY'S CREW: A. VASQUES, P. COBLE

THANK YOU FOR CHOOSING HALLIBURTON ENERGY SERVICES LIBERAL, KS: 620 624 8123

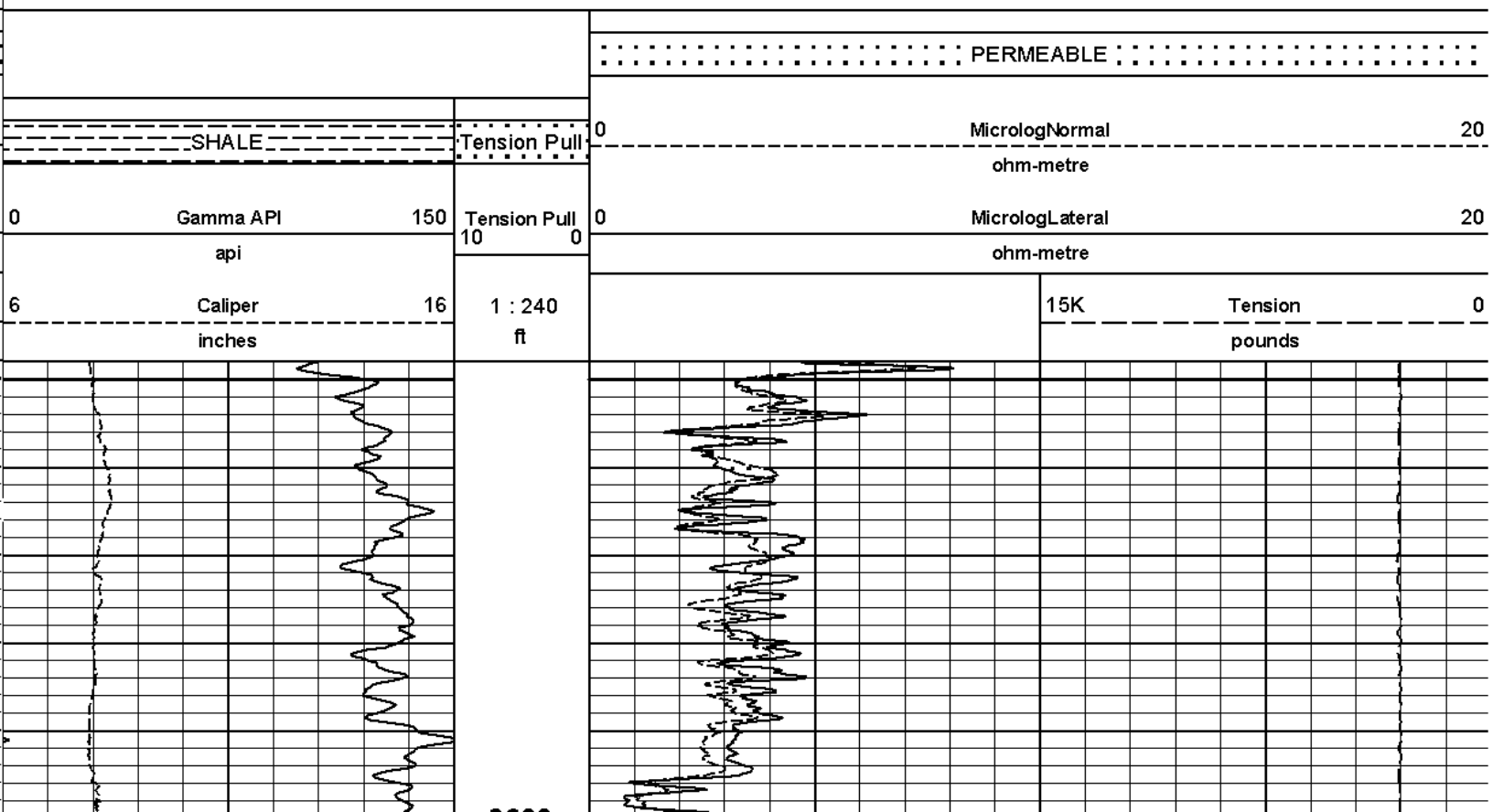
HALLIBURTON DOES NOT GUARANTEE THE ACCURACY OF ANY INTERPRETATION OF THE LOG DATA, CONVERSION OF LOG DATA TO PHYSICAL ROCK PARAMETERS OR RECOMMENDATIONS WHICH MAY BE GIVEN BY HALLIBURTON PERSONNEL OR WHICH APPEAR ON THE LOG OR IN ANY OTHER FORM. ANY USER OF SUCH DATA, INTERPRETATIONS, CONVERSIONS, OR RECOMMENDATIONS AGREES THAT HALLIBURTON IS NOT RESPONSIBLE EXCEPT WHERE DUE TO GROSS NEGLIGENCE OR WILLFUL MISCONDUCT, FOR ANY LOSS, DAMAGES, OR EXPENSES RESULTING FROM THE USE THEREOF.

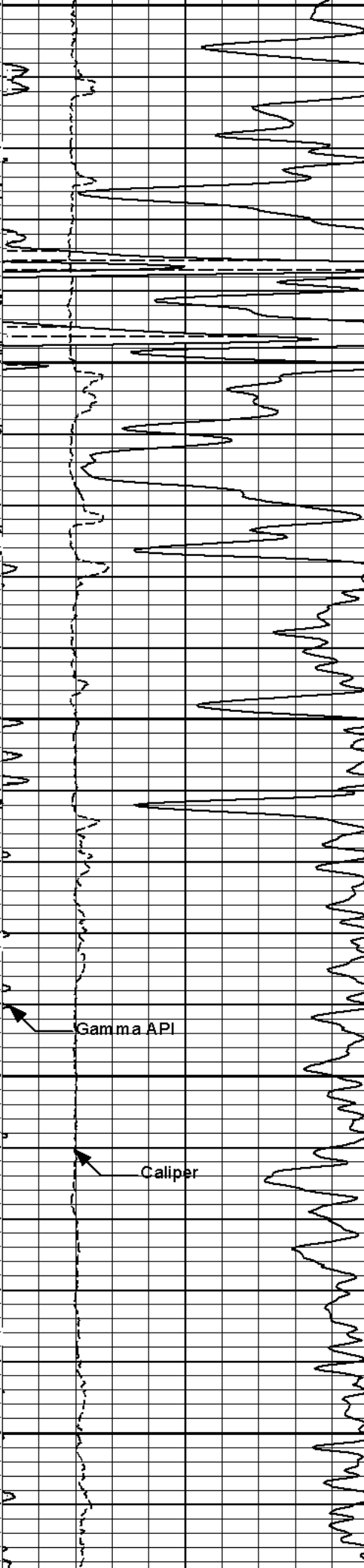
HALLIBURTON



Plot Time: 08-Jun-11 07:23:57
 Plot Range: 3548 ft to 4989.75 ft
 Data: MYRTLE_3_31\Well Based\DAQ-0001-0031
 Plot File: \\LOCAL\MYRTLE_3_31\0001 SP-GTET-DSN-SDL-ACRT-CHMICRO\Microlog_IQ_5_main.lib

5 INCH MAIN LOG

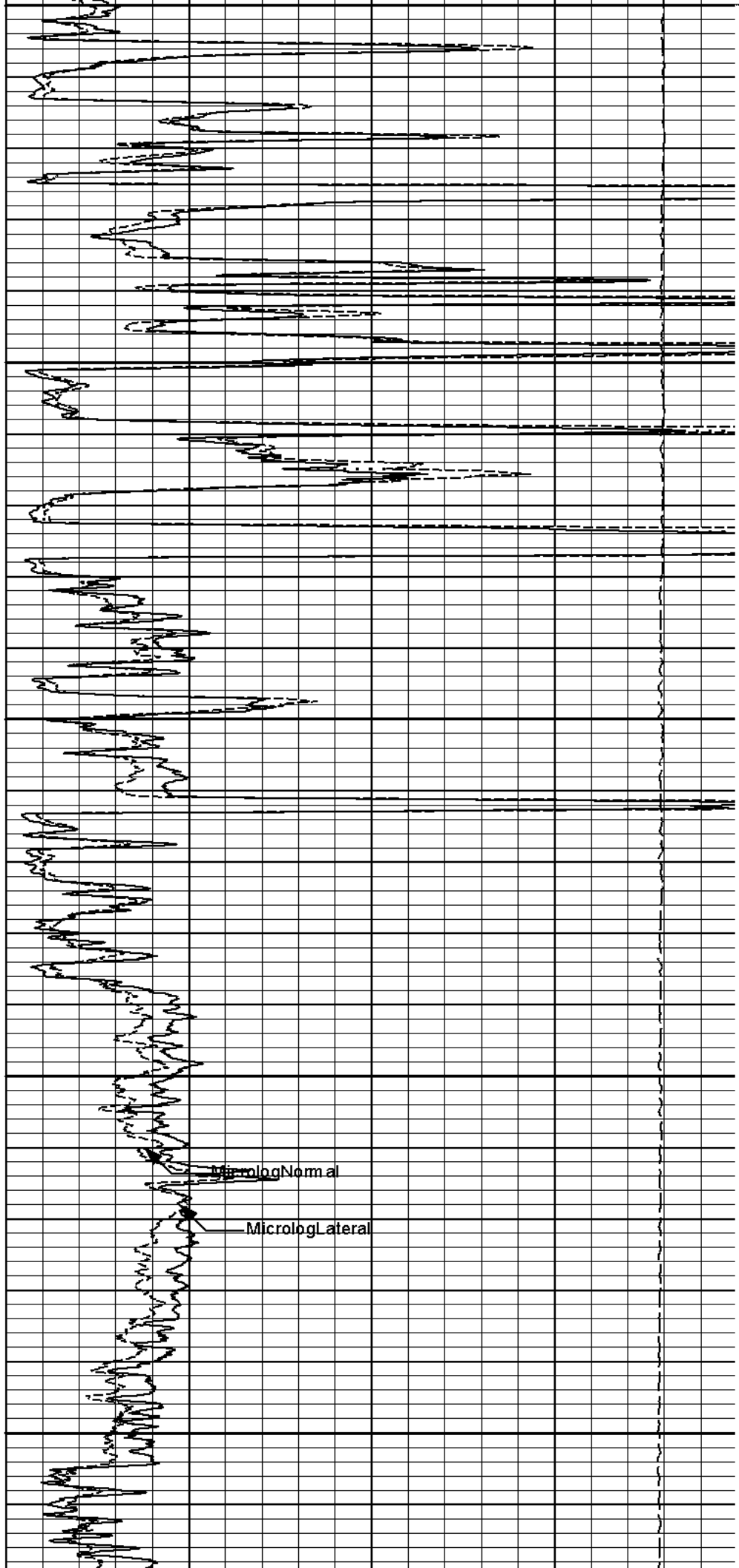




3600

3700

3800

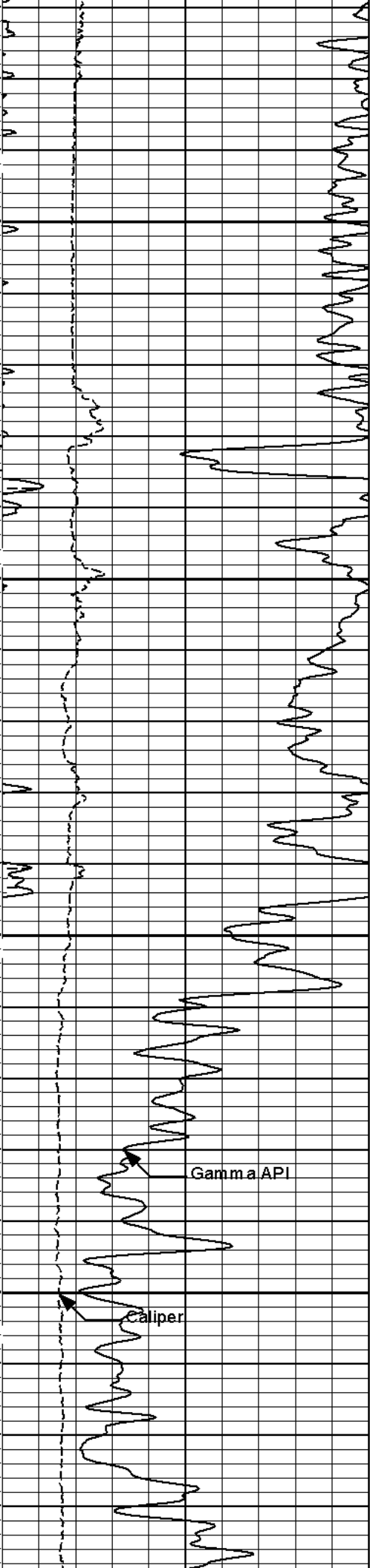


Gamma API

Caliper

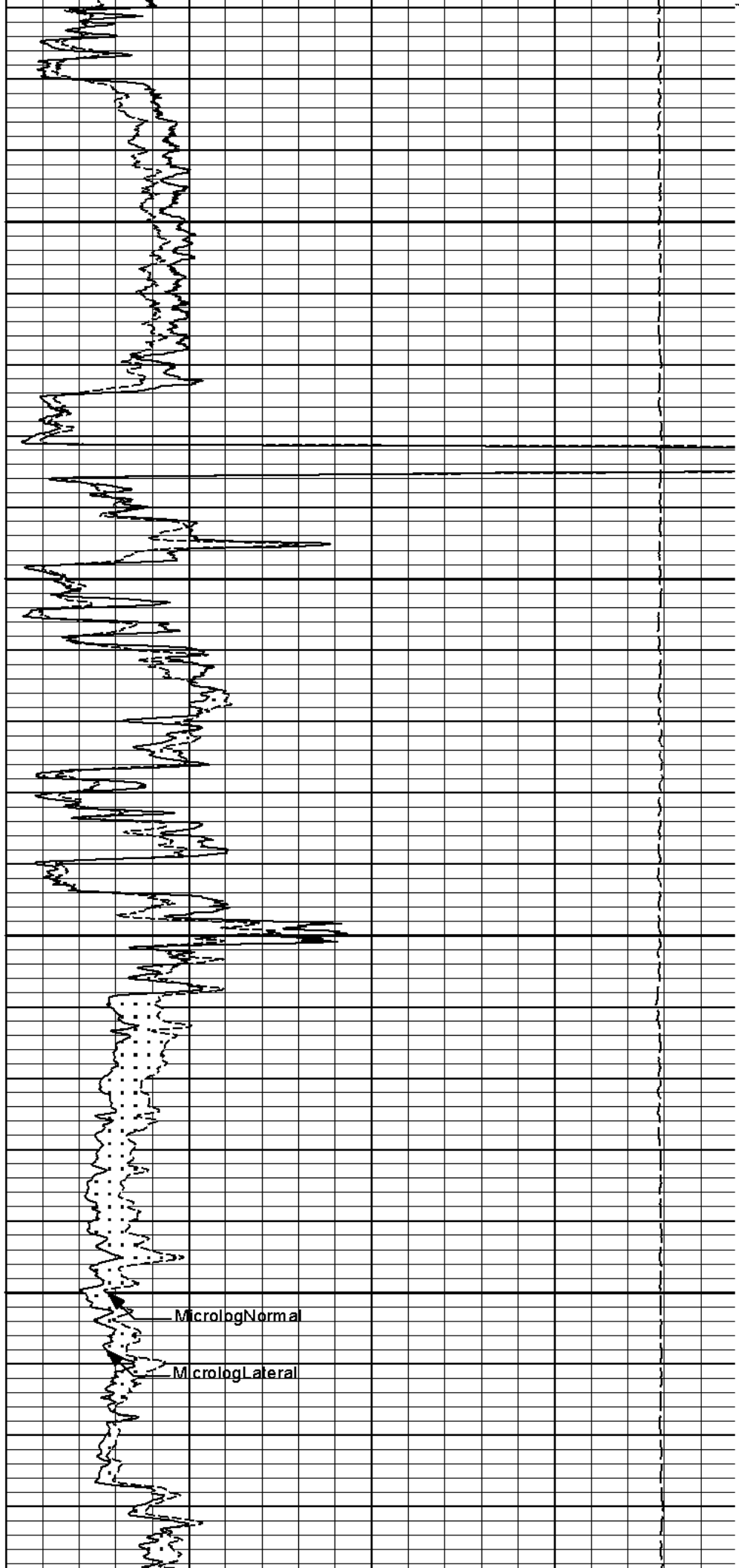
MicrologNormal

MicrologLateral



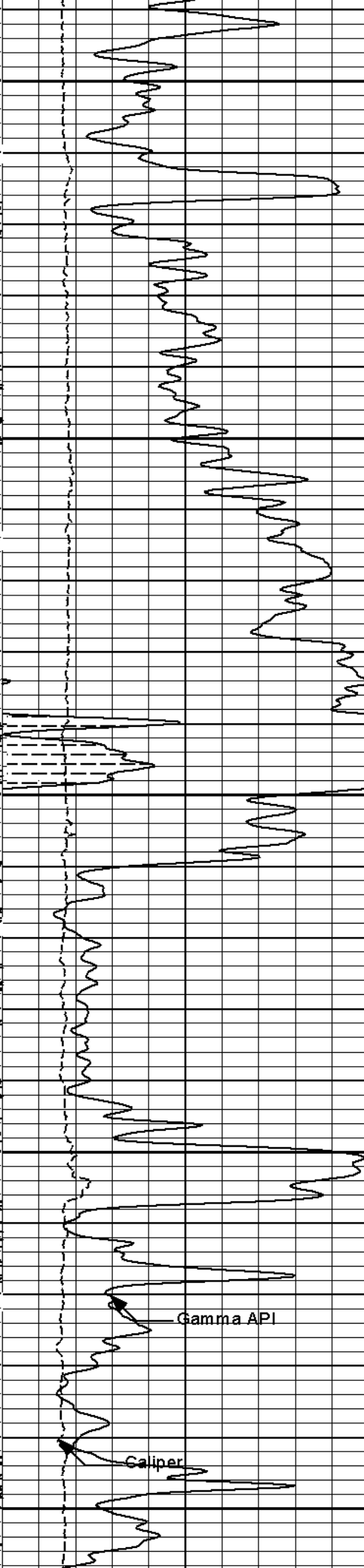
3900

4000



MicrologNormal

MicrologLateral

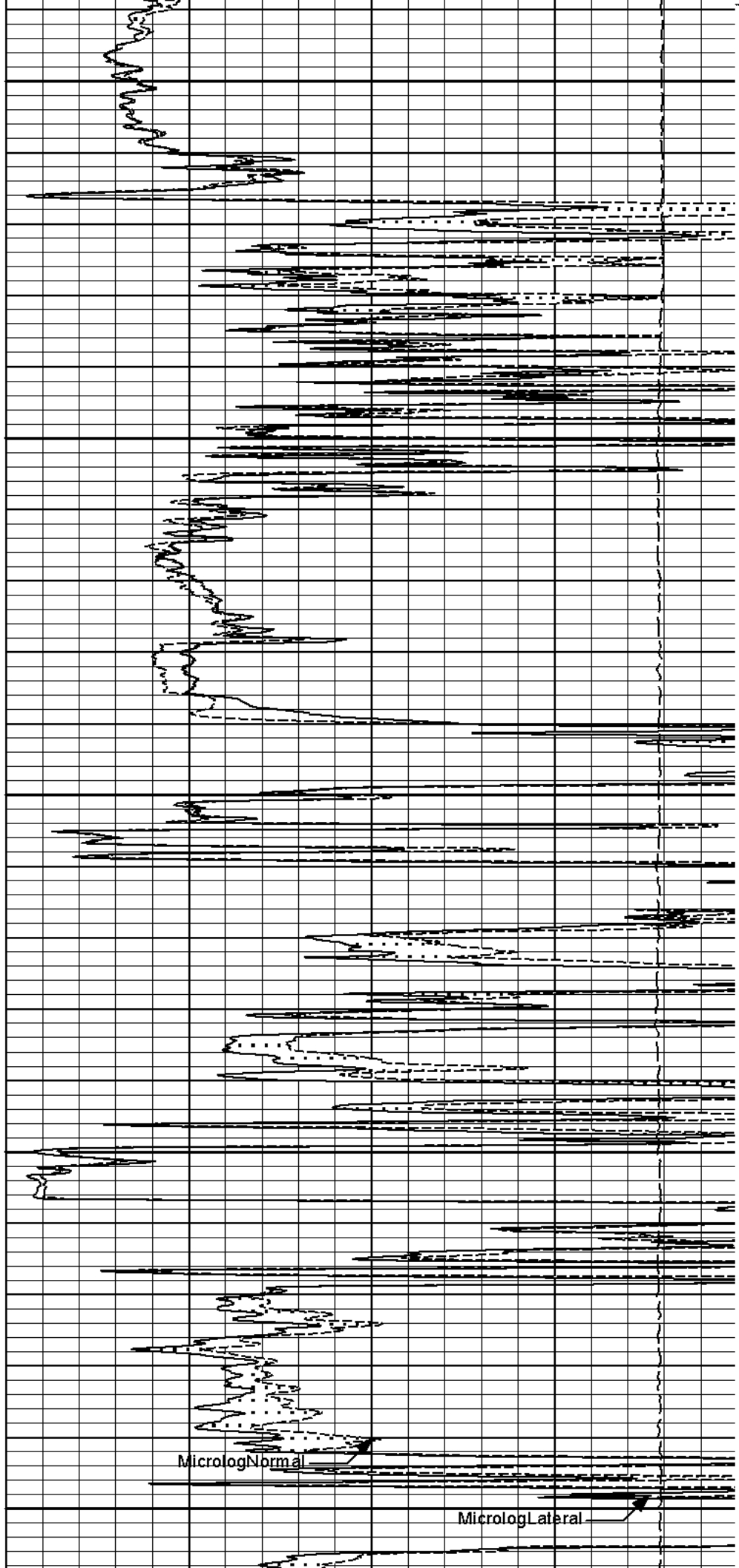


4100

4200

Gamma API

Caliper



MicrologNormal

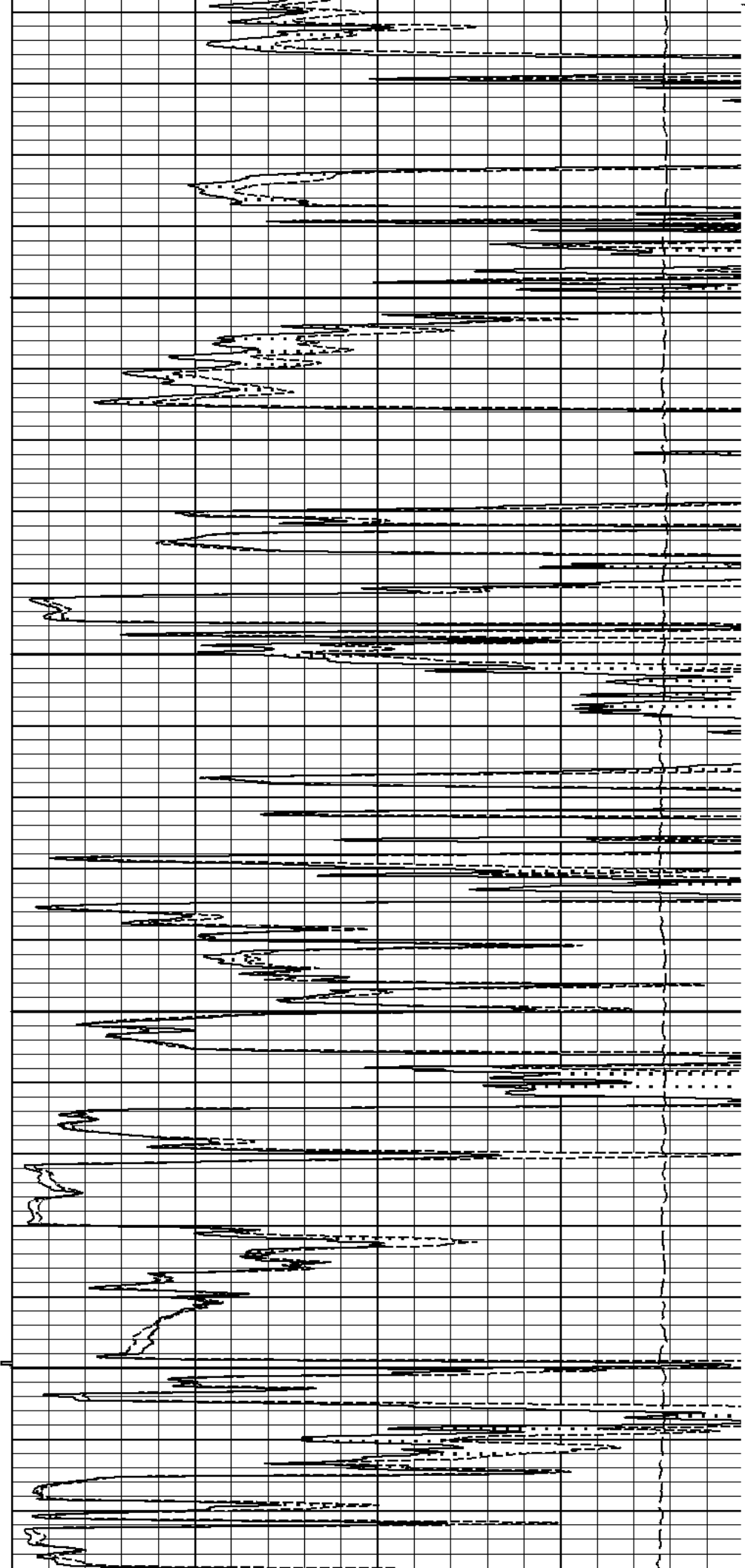
MicrologLateral

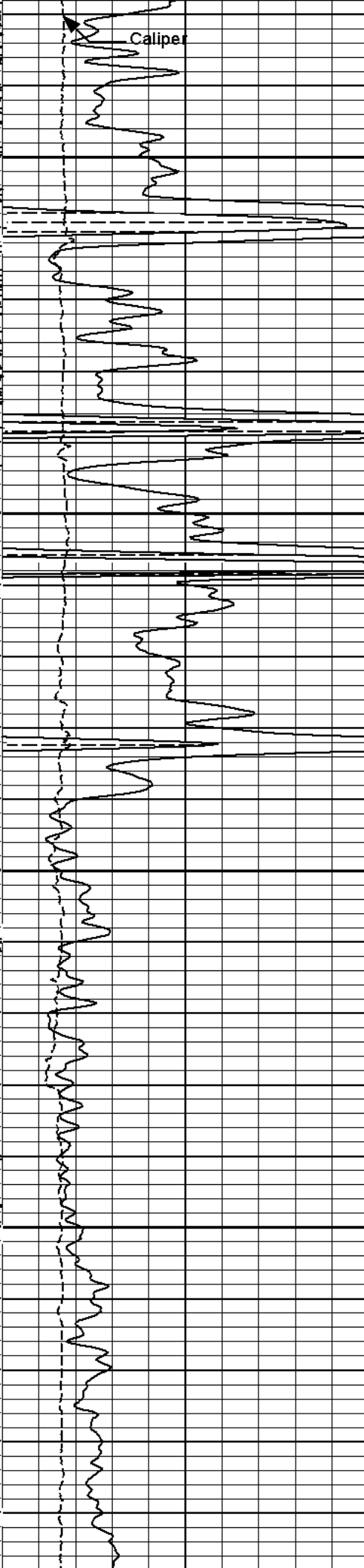


4300

4400

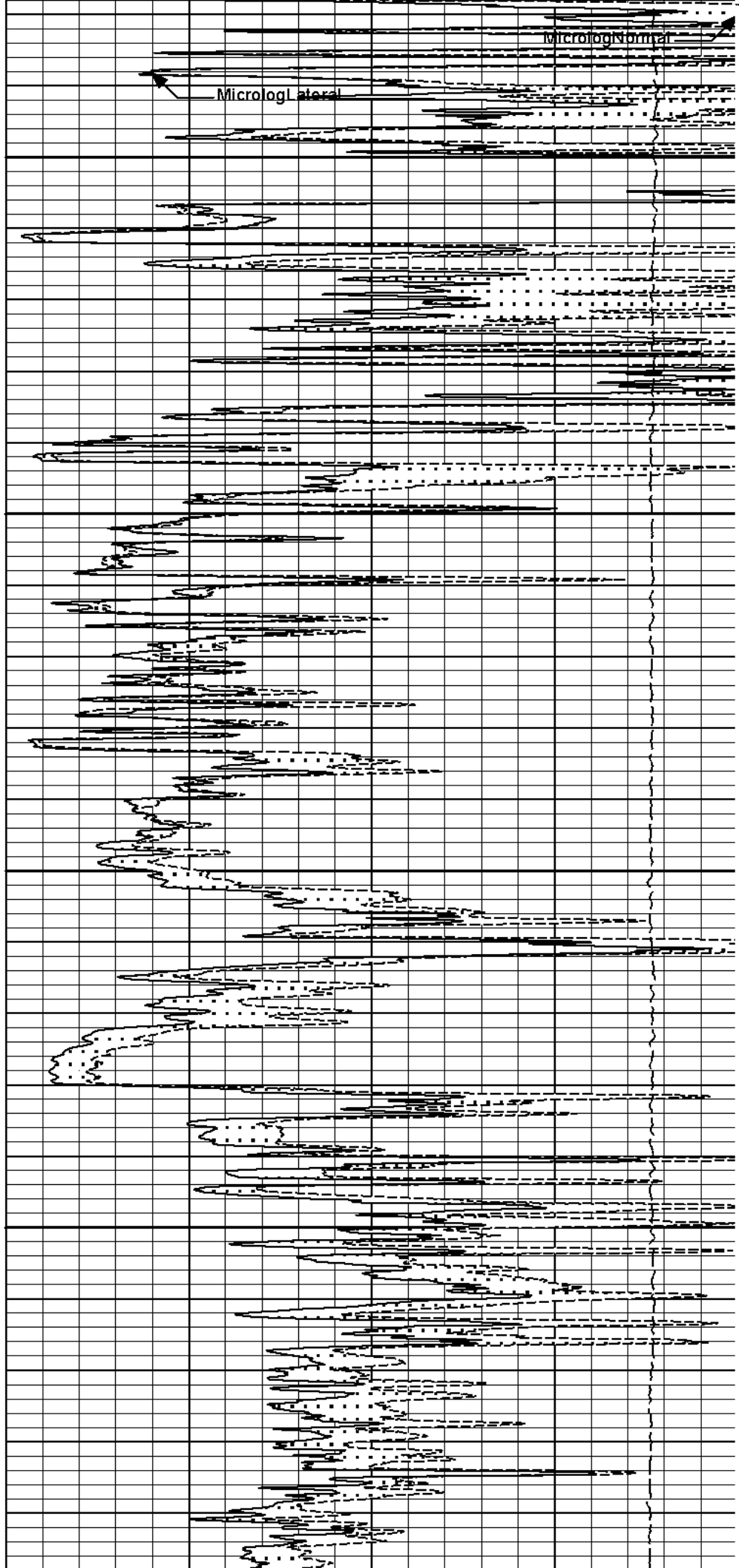
Gamma API

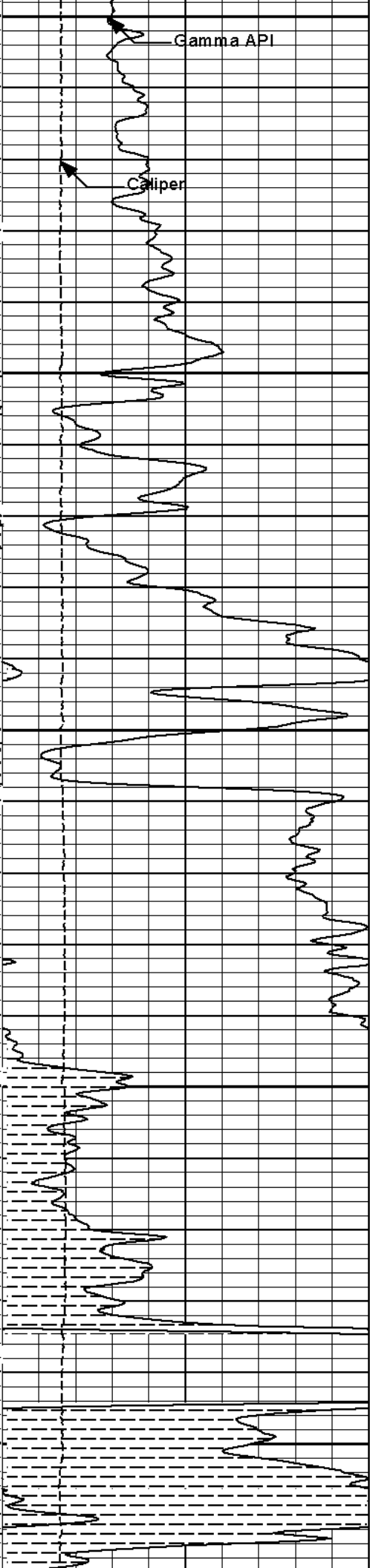




4500

4600





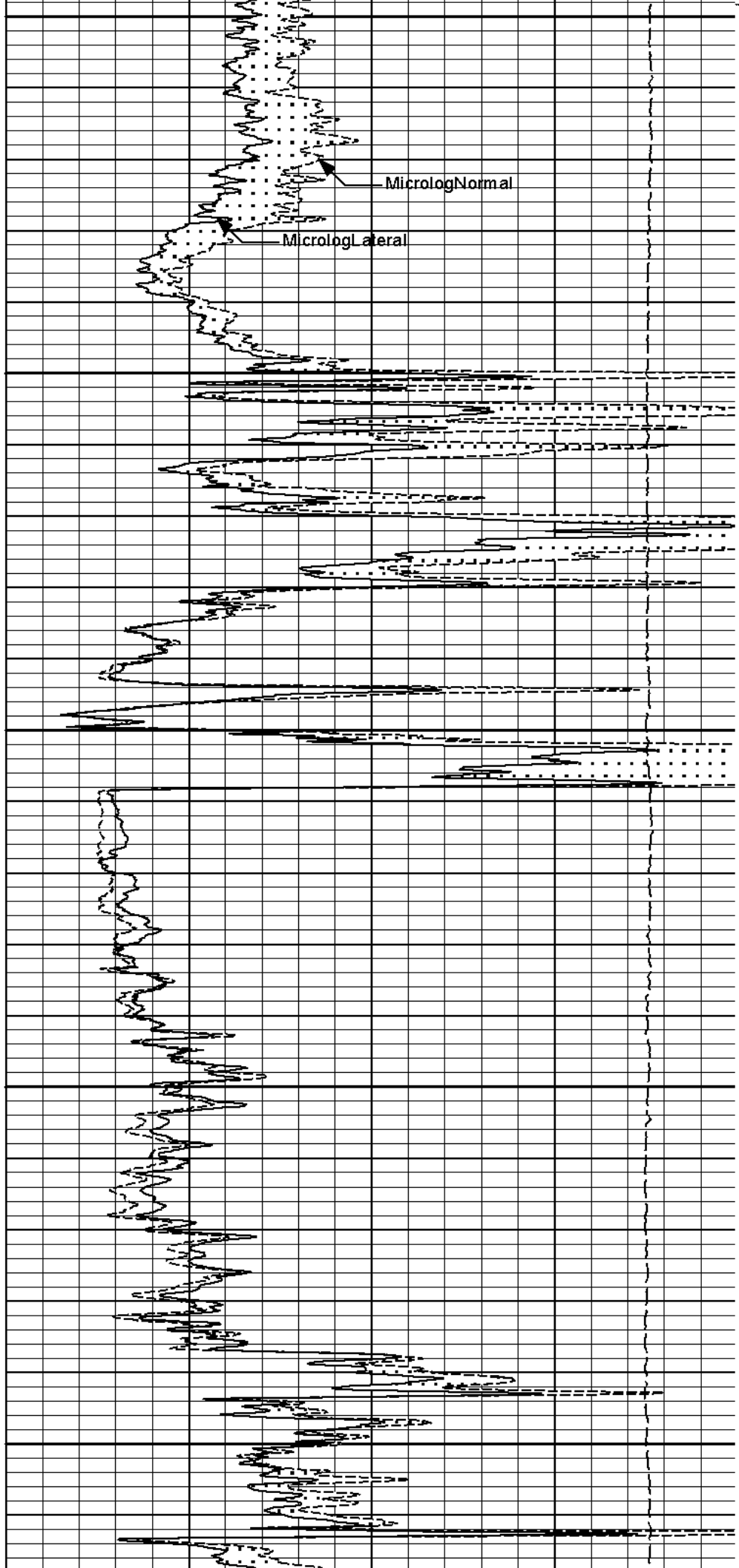
4700

Gamma API

Caliper

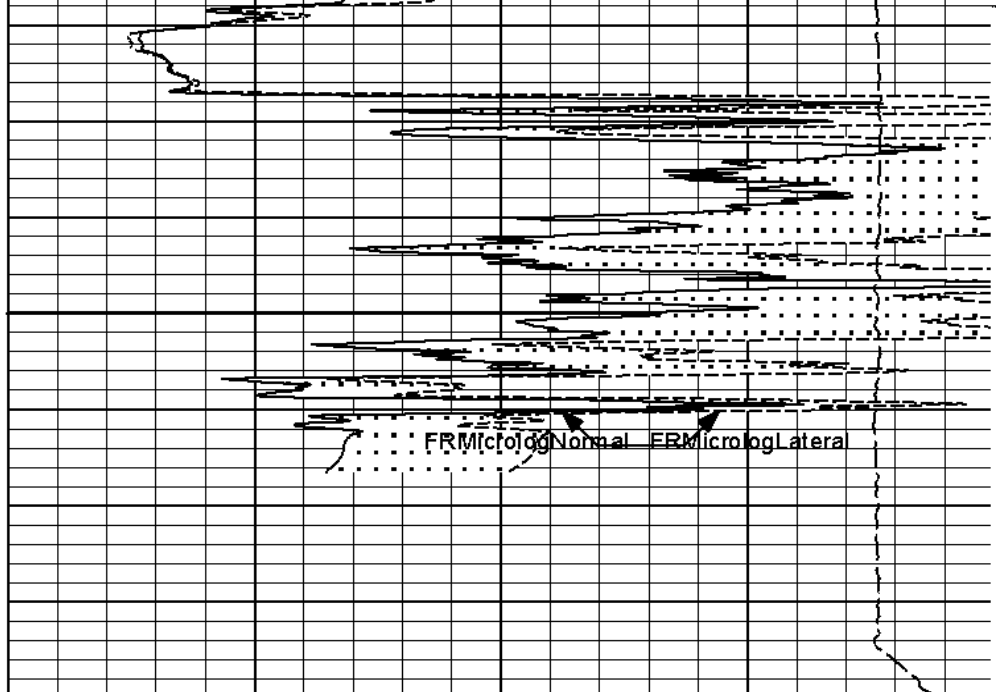
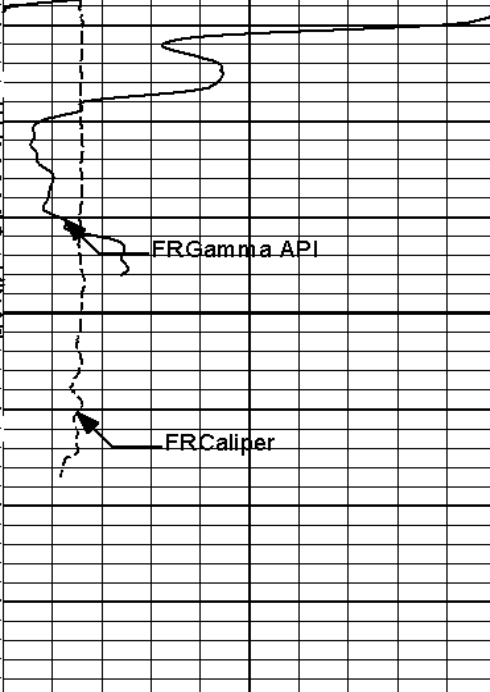
4800

4900



MicrologNormal

MicrologLateral



6	Caliper	16	1 : 240	15K	Tension	0
	inches		ft		pounds	
0	Gamma API	150	Tension Pull	0	MicrologLateral	20
	api		10		ohm-metre	
	SHALE		Tension Pull	0	MicrologNormal	20
					ohm-metre	
					PERMEABLE	

HALLIBURTON

Plot Time: 08-Jun-11 07:24:06
 Plot Range: 3548 ft to 4989.75 ft
 Data: MYRTLE_3_31\Well Based\DAQ-0001-0031
 Plot File: \\LOCAL\MYRTLE_3_31\0001 SP-GTET-DSN-SDL-ACRT-CHMICRO\Microlog_IQ_5_main_lib

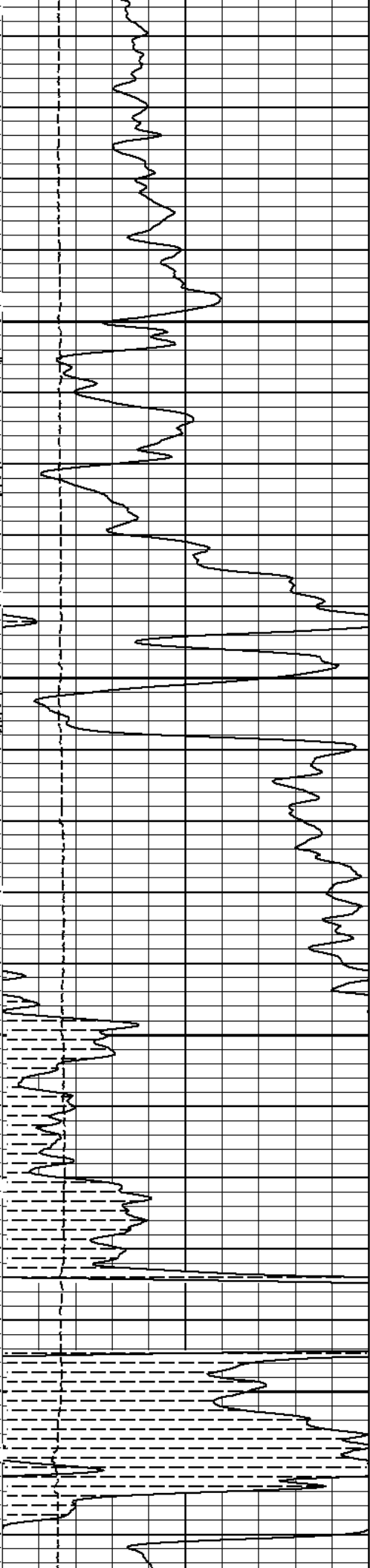
5 INCH MAIN LOG

HALLIBURTON

Plot Time: 08-Jun-11 07:24:06
 Plot Range: 4698 ft to 4989.67 ft
 Data: MYRTLE_3_31\Well Based\DAQ-0001-0021
 Plot File: \\LOCAL\MYRTLE_3_31\0001 SP-GTET-DSN-SDL-ACRT-CHMICRO\Microlog_IQ_5_rep_lib

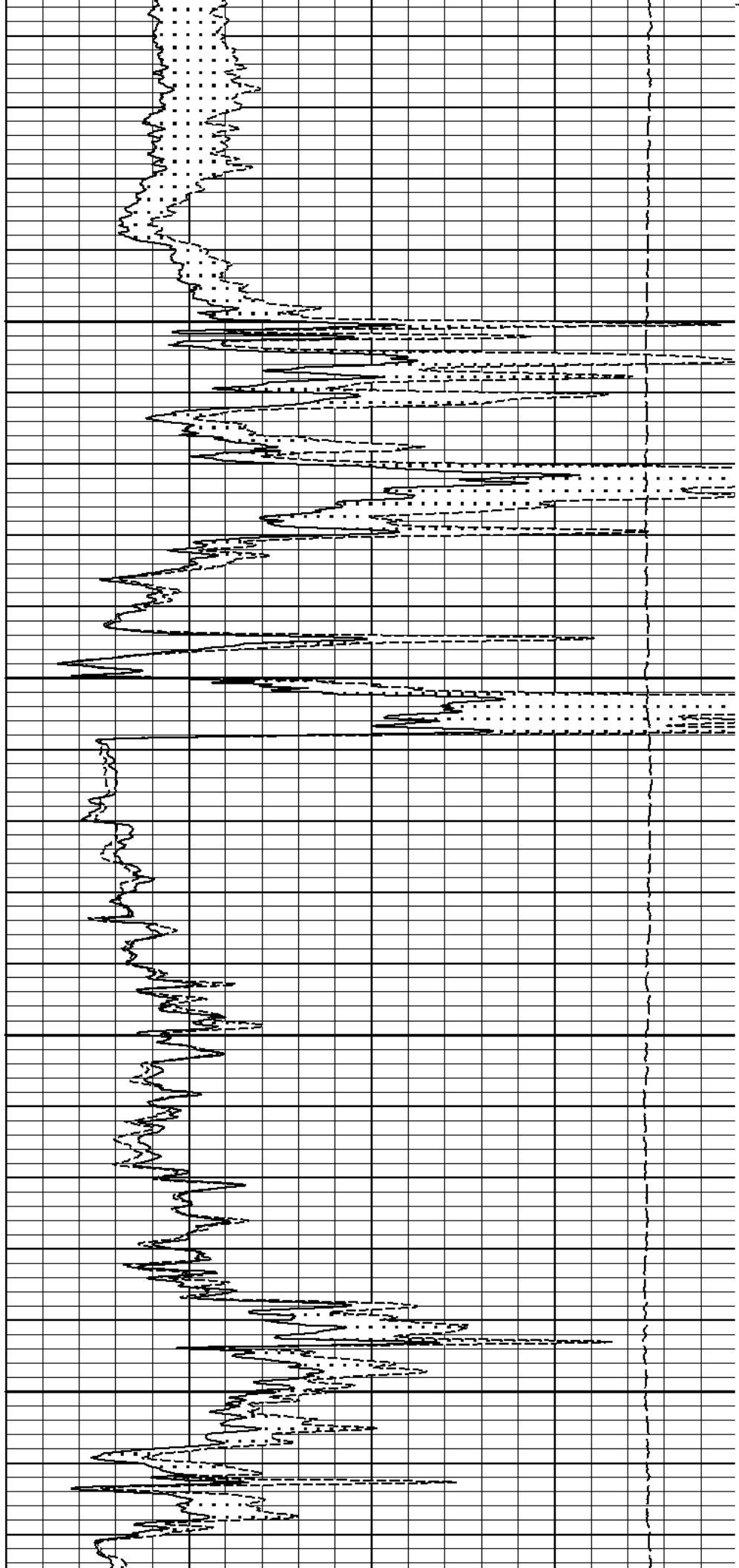
REPEAT SECTION

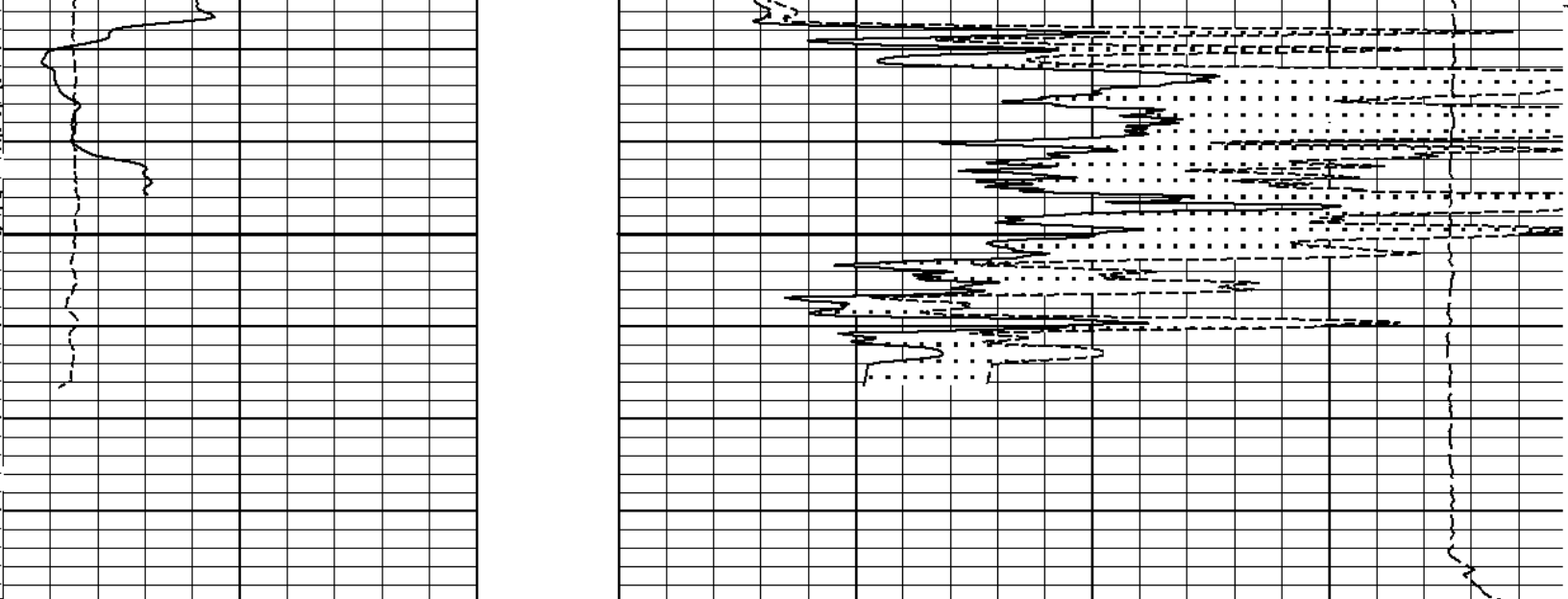
					PERMEABLE	
	SHALE		0		MicrologNormal	20
					ohm-metre	
6	Caliper	16	0		MicrologLateral	20
	inches				ohm-metre	
0	Gamma API	150	1 : 240	15K	Tension	0
	api		ft		pounds	
			4700			



4800

4900





0	Gamma API	150	1 : 240 ft	15K	Tension	0
	api				pounds	
6	Caliper	16	0	MicrologLateral		20
	inches				ohm-metre	
	SHALE		0	MicrologNormal		20
					ohm-metre	
				PERMEABLE		

HALLIBURTON

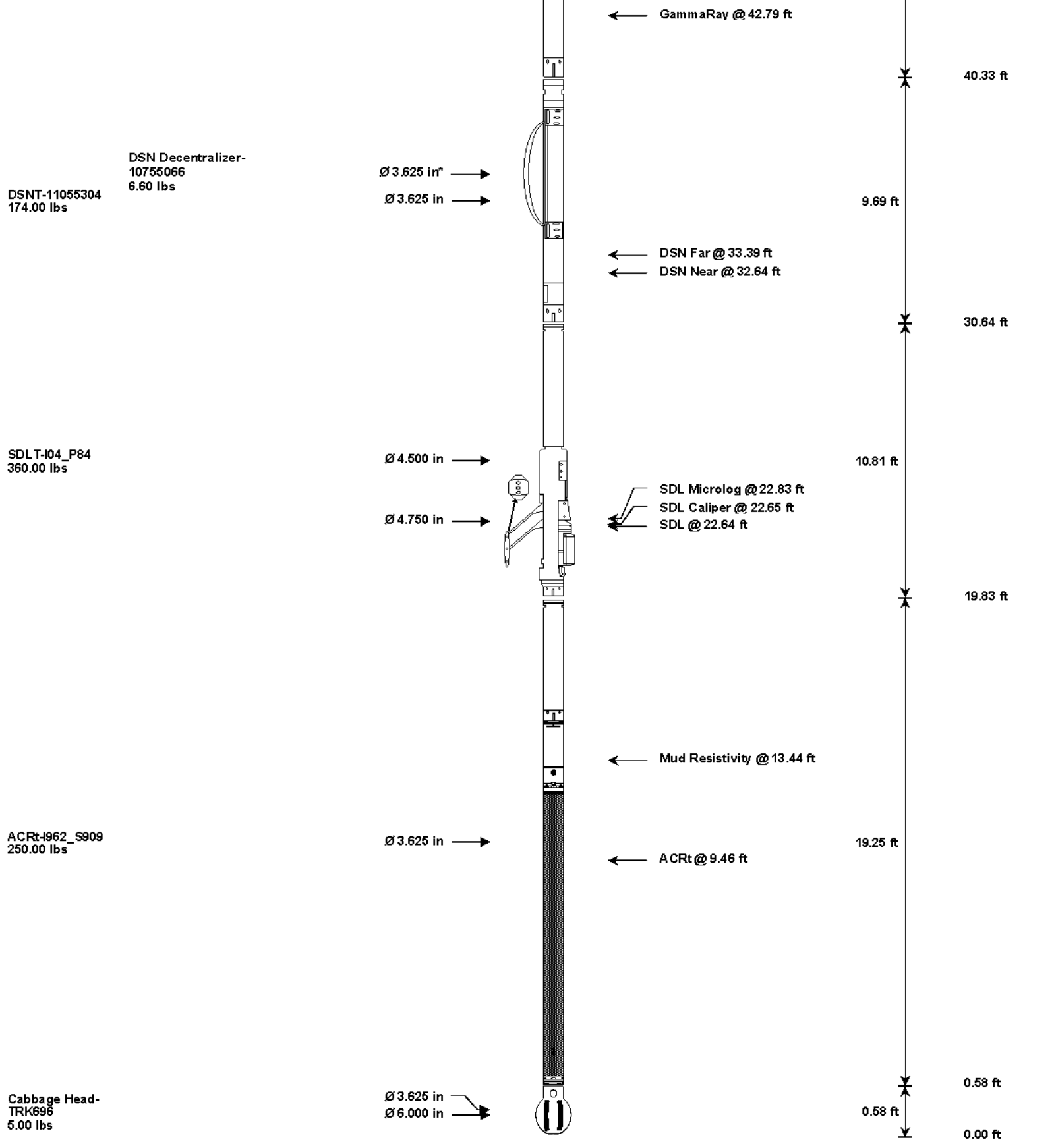
Plot Time: 08-Jun-11 07:24:09
 Plot Range: 4698 ft to 4989.67 ft
 Data: MYRTLE_3_31Well Based\DAQ-0001-0021
 Plot File: \\LOCAL\MYRTLE_3_31\0001 SP-GTET-DSN-SDL-ACRT-CHMICRO\Microlog_IQ_5_rep.lib

REPEAT SECTION

HALLIBURTON

TOOL STRING DIAGRAM REPORT

Description	Overbody Description	O.D.	Diagram	Sensors @ Delays	Length	Accumulated Length
CH_HOS-CH_696 37.50 lbs		∅ 2.750 in →		← Temperature @ 55.54 ft	3.03 ft	56.57 ft
XOHD-TRK696 20.00 lbs		∅ 2.750 in → ∅ 3.625 in →		← SP @ 50.81 ft	0.95 ft	53.54 ft
SP Sub-PROT01 60.00 lbs		∅ 3.625 in →			3.74 ft	52.59 ft
						48.85 ft
GTET-11050378 165.00 lbs		∅ 3.625 in →			8.52 ft	



DSNT-11055304
174.00 lbs

DSN Decentralizer-
10755066
6.60 lbs

SDLT-104_P84
360.00 lbs

ACRt-1962_S909
250.00 lbs

Cabbage Head-
TRK696
5.00 lbs

Mnemonic	Tool Name	Serial Number	Weight (lbs)	Length (ft)	Accumulated Length (ft)	Max.Log. Speed (fpm)
CH_HOS	Hostile Cable Head with Load Cell	CH_696	37.50	3.03	53.54	300.00
XOHD	Hostile to Dits Cross Over	TRK696	20.00	0.95	52.59	300.00
SP	SP Sub	PROT01	60.00	3.74	48.85	300.00
GTET	Gamma Telemetry Tool	11050378	165.00	8.52	40.33	60.00
DSNT	Dual Spaced Neutron	11055304	174.00	9.69	30.64	60.00
DCNT	DSN Decentralizer	10755066	6.60	5.13	33.97	300.00
SDLT	Spectral Density Tool	I04_P84	360.00	10.81	19.83	60.00
ACRt	Array Compensated True Resistivity	I962_S909	250.00	19.25	0.58	300.00
CBHD	Cabbage Head	TRK696	5.00	0.58	0.00	300.00

HALLIBURTON**PARAMETERS REPORT**

Depth (ft)	Tool Name	Mnemonic	Description	Value	Units
TOP					
	DSNT	DNOK	Process DSN?	No	
	SDLT	DNOK	Process Density?	No	
	SDLT	MLOK	Process MicroLog Outputs?	No	
3490.00					
	SHARED	BS	Bit Size	7.875	in
	SHARED	UBS	Use Bit Size instead of Caliper for all applications.	No	
	SHARED	MDBS	Mud Base	Water	
	SHARED	MDWT	Borehole Fluid Weight	9.200	ppg
	SHARED	WAGT	Weighting Agent	Natural	
	SHARED	BSAL	Borehole salinity	0.00	ppm
	SHARED	FSAL	Formation Salinity NaCl	0.00	ppm
	SHARED	KPCT	Percent K in Mud by Weight?	0.00	%
	SHARED	RMUD	Mud Resistivity	0.409	ohmm
	SHARED	TRM	Temperature of Mud	75.0	degF
	SHARED	CSD	Logging Interval is Cased?	No	
	SHARED	ICOD	AHV Casing OD	5.500	in
	SHARED	ST	Surface Temperature	75.0	degF
	SHARED	TD	Total Well Depth	4984.00	ft
	SHARED	BHT	Bottom Hole Temperature	120.0	degF
	SHARED	SVTM	Navigation and Survey Master Tool	NONE	
	SHARED	AZTM	High Res Z Accelerometer Master Tool	GTET	
	SHARED	TEMM	Temperature Master Tool	NONE	
	SHARED	BHSM	Borehole Size Master Tool	NONE	
	GTET	GROK	Process Gamma Ray?	Yes	
	GTET	GRSO	Gamma Tool Standoff	0.000	in
	GTET	GEOK	Process Gamma Ray EVR?	No	
	GTET	TPOS	Tool Position	Centered	
	DSNT	DNOK	Process DSN?	Yes	
	DSNT	DEOK	Process DSN EVR?	No	
	DSNT	NLIT	Neutron Lithology	Limestone	
	DSNT	DNSO	DSN Standoff - 0.25 in (6.35 mm) Recommended	0.250	in
	DSNT	DNTP	Temperature Correction Type	None	
	DSNT	DPRS	DSN Pressure Correction Type	None	
	DSNT	SHCO	View More Correction Options	No	
	DSNT	UTVD	Use TVD for Gradient Corrections?	No	
	DSNT	LHWT	Logging Horizontal Water Tank?	No	
	SDLT	DNOK	Process Density?	Yes	
	SDLT	DNOK	Process Density EVR?	No	
	SDLT	CB	Logging Calibration Blocks?	No	

SDLT	SPVT	SDLT Pad Temperature Valid?	Yes	
SDLT	DTWN	Disable temperature warning	No	
SDLT	DMA	Formation Density Matrix	2.710	g/cc
SDLT	DFL	Formation Density Fluid	1.000	g/cc
SDLT	CLOK	Process Caliper Outputs?	Yes	
SDLT	MLOK	Process MicroLog Outputs?	Yes	
ACRt	RTOK	Process ACRt?	Yes	
ACRt	MNSO	Minimum Tool Standoff	1.50	in
ACRt	TCS1	Temperature Correction Source	FP Lwr & FP Upr	
ACRt	TPOS	Tool Position	Free Hanging	
ACRt	RMOP	Rmud Source	Mud Cell	
ACRt	RMIN	Minimum Resistivity for MAP	0.20	ohmm
ACRt	RMIN	Maximum Resistivity for MAP	200.00	ohmm
ACRt	THQY	Threshold Quality	0.50	

BOTTOM

Data: MYRTLE_3_3110001 SP-GTET-DSN-SDL-ACRT-CHIDLE

Date: 08-Jun-11 06:39:05

COMPANY	VAL ENERGY INC		
WELL	MYRTLE 3-31		
FIELD	UNKNOWN		
COUNTY	BARBER	STATE	KANSAS
HALLIBURTON		MICRO LOG	