



Dual Induction Log

DIGITAL LOG (785) 625-3858

API No.	15-077-21,681-00-00	
Company	Charles N. Griffin	
Well	Fanning No. 2	
Field	Hibbord NE	
County	Harper	State
		Kansas
Location	SW NE SE 1650' FSL & 990' FEL	
Sec: 11	Twp: 34S	Rge: 9W
Permanent Datum	Ground Level	Elevation 1303
Log Measured From	Kelly Bushing	10 Ft. Above Perm. Datum
Drilling Measured From	Kelly Bushing	K.B. 1313
		D.F. 1303
		G.L. 1303
		Other Services CNL/CDL

Date	06/12/2010	
Run Number	One	
Depth Driller	5095	
Depth Logger	5090	
Bottom Logged Interval	5089	
Top Log Interval	250	
Casing Driller	8.625 @ 268	
Casing Logger	266	
Bit Size	7.875	
Type Fluid in Hole	Chemical	
Salinity, ppm CL	4.000	
Density / Viscosity	9.4	61
pH / Fluid Loss	10.0	10.8
Source of Sample	Flowline	
Rm @ Meas. Temp	.4 @ 78	
Rmf @ Meas. Temp	.30 @ 78	
Rmc @ Meas. Temp	.54 @ 78	
Source of Rmf / Rmc	Charts	
Rm @ BHT	.24 @ 129	
Operating Rig Time	2 1/2 Hours	
Max Rec. Temp. F	129	
Equipment Number	17	
Location	Hays	
Recorded By	Mike Garrison	
Witnessed By	Bruce Reed	

<<< Fold Here >>>

All interpretations are opinions based on inferences from electrical or other measurements and we cannot and do not guarantee the accuracy or correctness of any interpretation, and we shall not, except in the case of gross or willful negligence on our part, be liable or responsible for any loss, costs, damages, or expenses incurred or sustained by anyone resulting from any interpretation made by any of our officers, agents or employees. These interpretations are also subject to our general terms and conditions set out in our current Price Schedule.

Comments

Thank you for using Log-Tech, Inc.
(785) 625-3858

Anthony, 12 West to 120th Ave, 4 South, 1/8 West, North Into

Database File: griffin_fanning-2hd.db
 Dataset Pathname: dil/griffin2in
 Presentation Format: dil2in
 Dataset Creation: Sat Jun 12 20:30:24 2010
 Charted by: Depth in Feet scaled 1:600

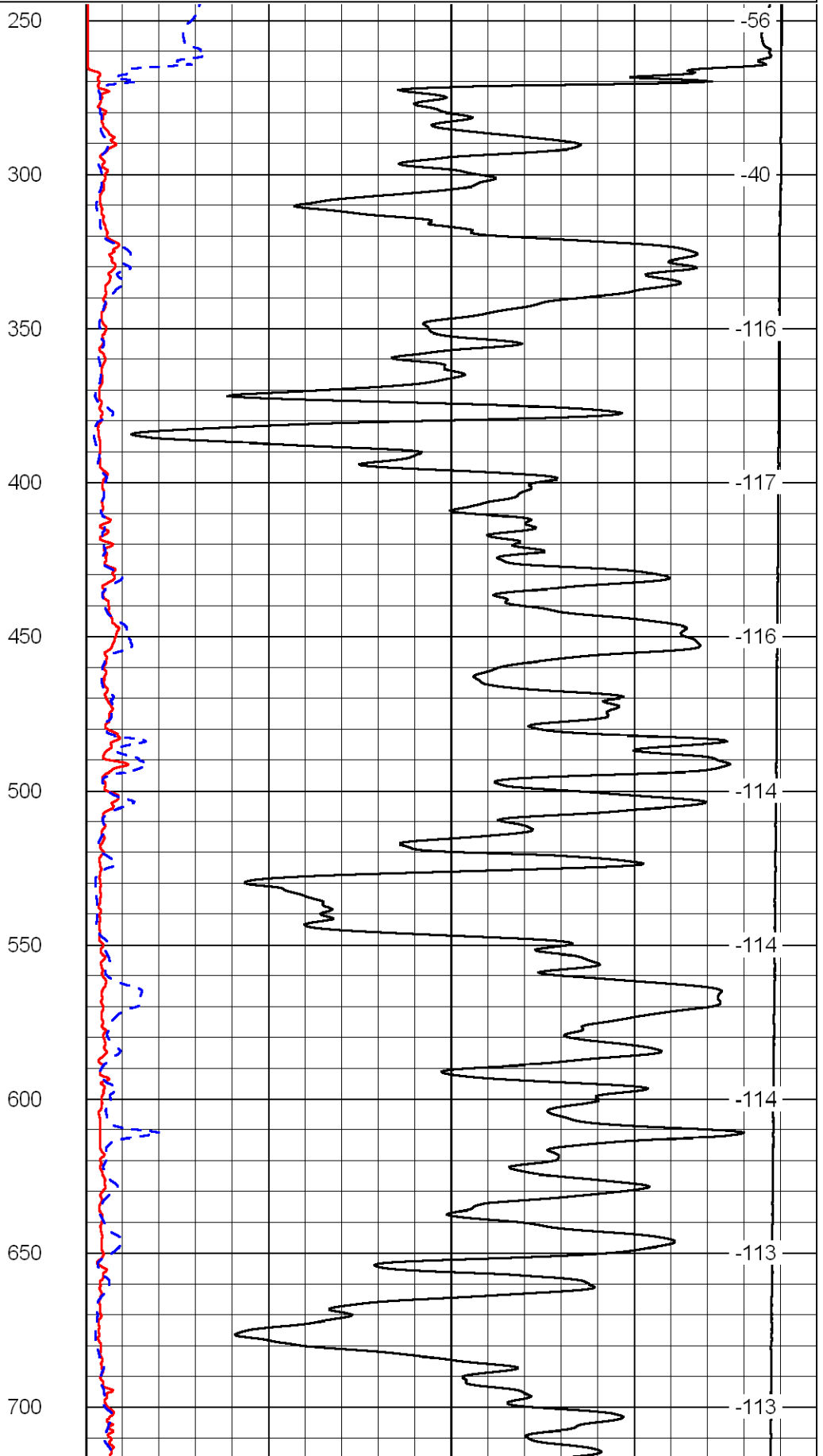
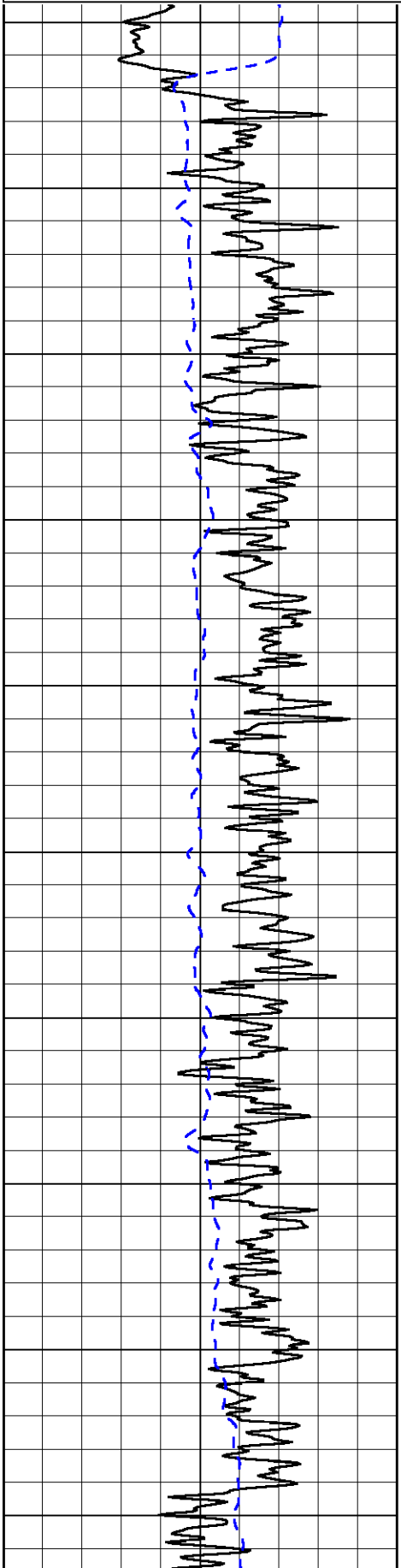
0	Gamma Ray	150
-200	SP	0

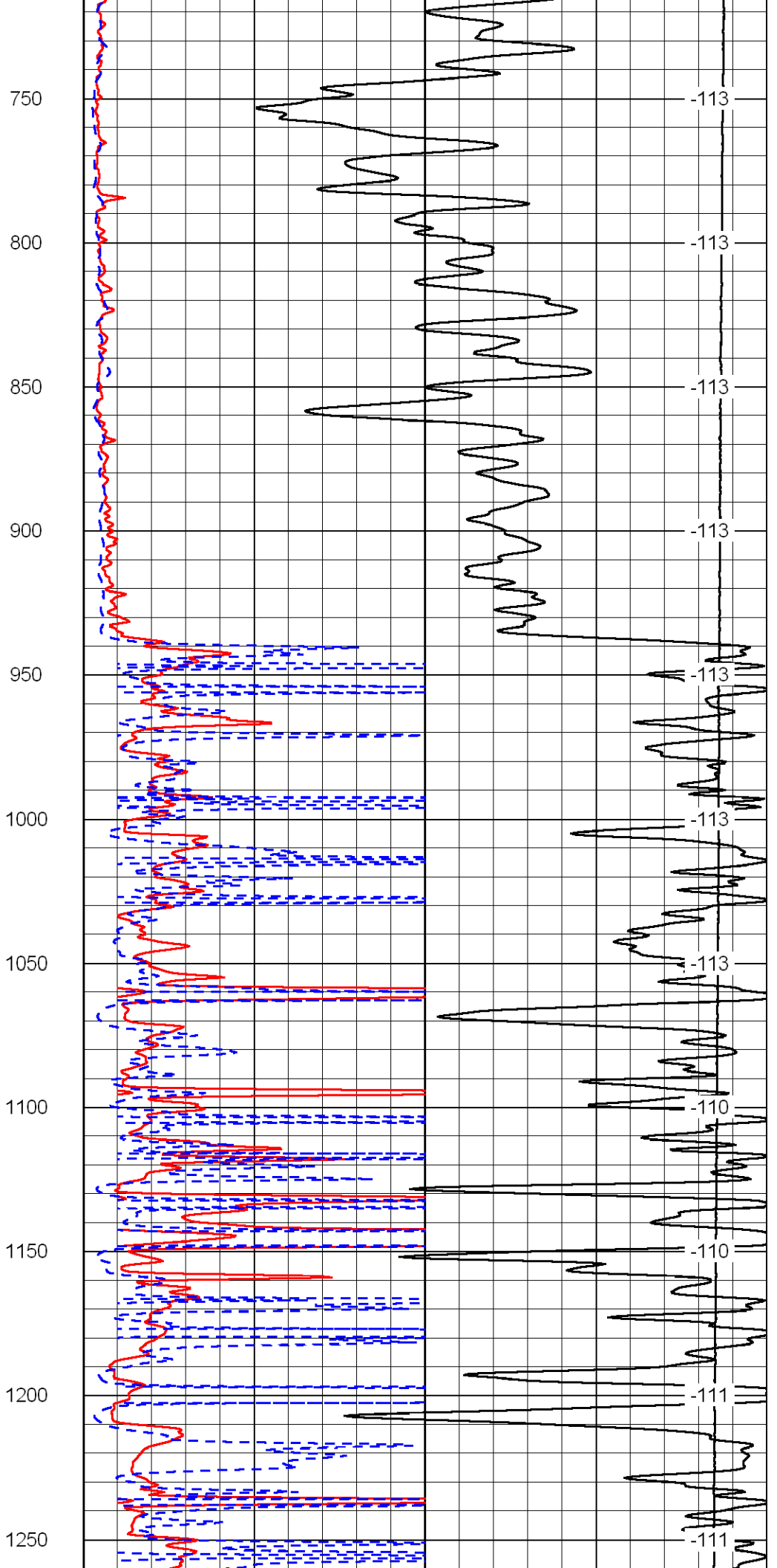
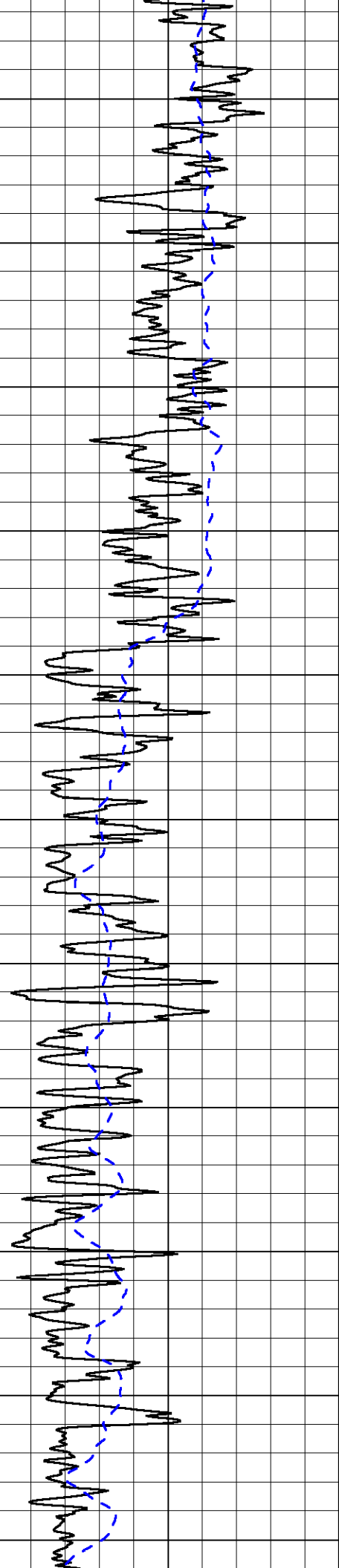
0	Shallow Resistivity	50
0	Deep Resistivity	50

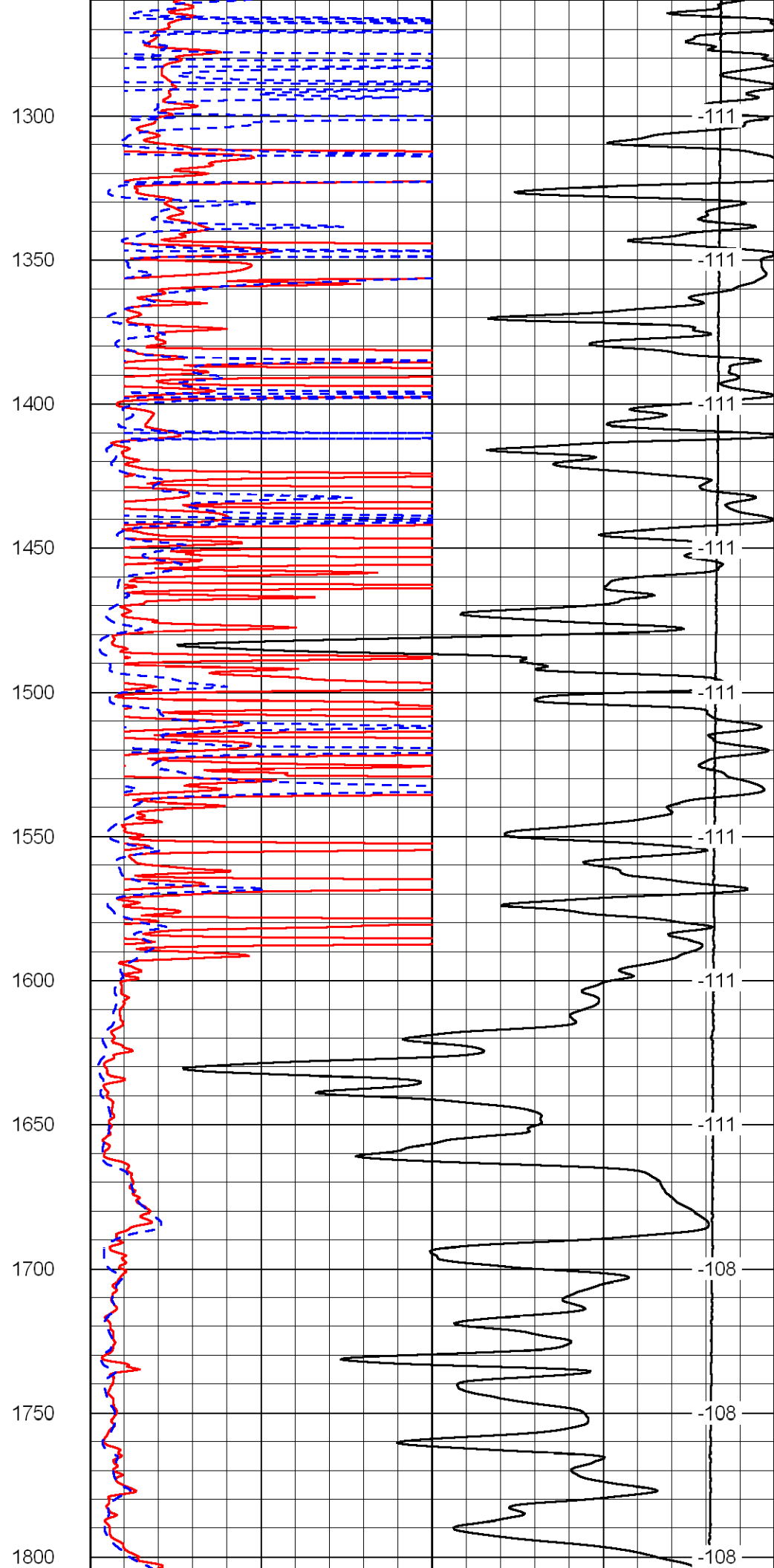
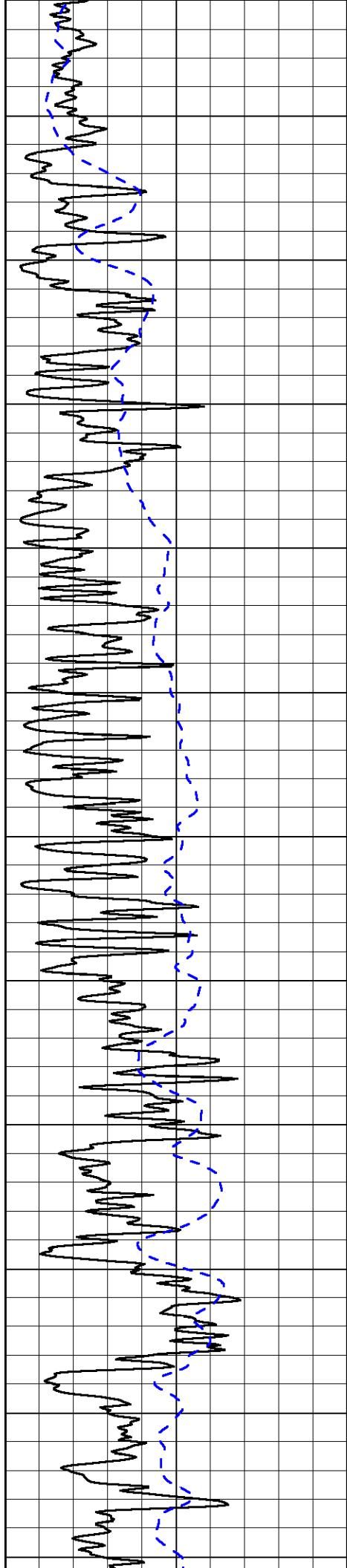
LSPD

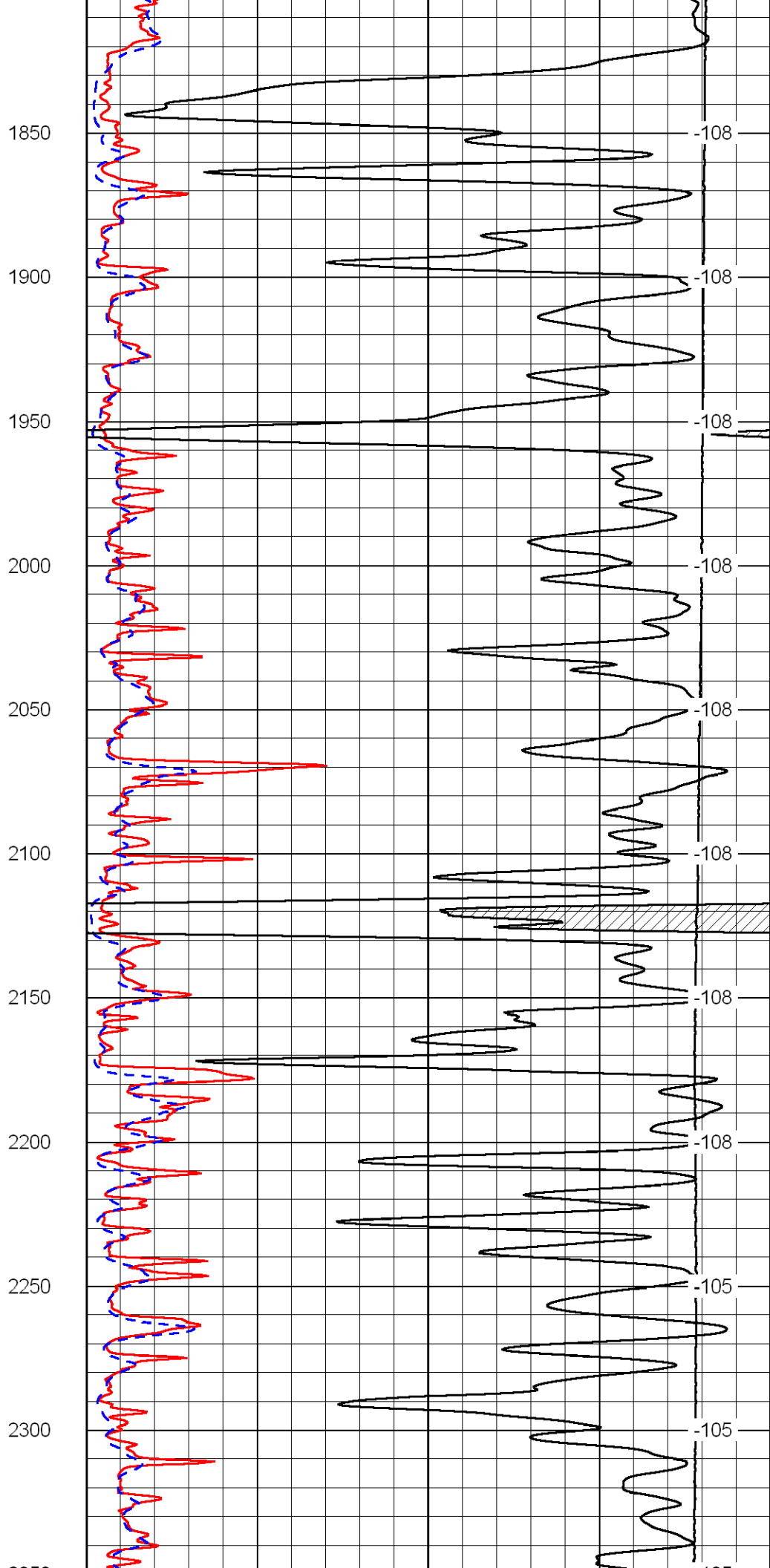
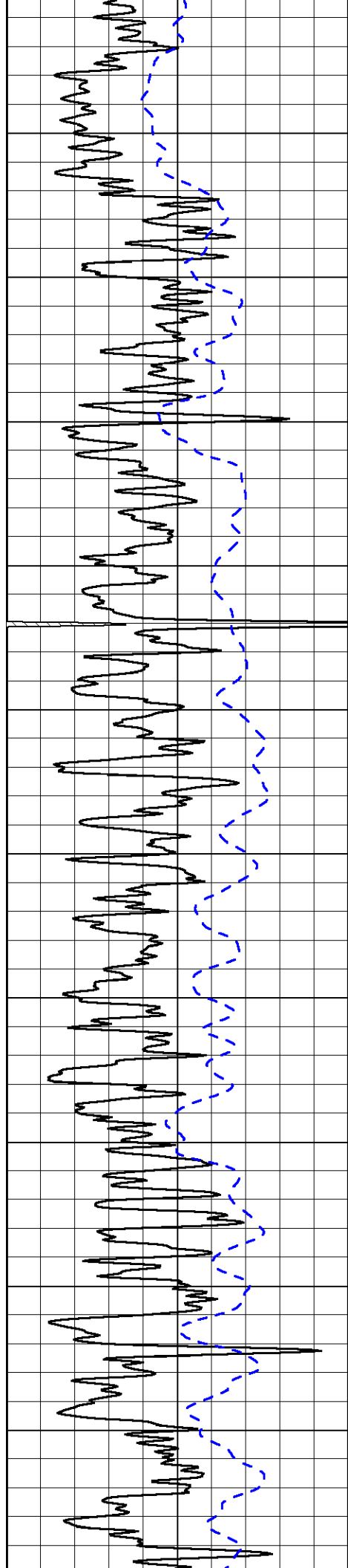
1000	Conductivity	0
15000	Line Tension	0

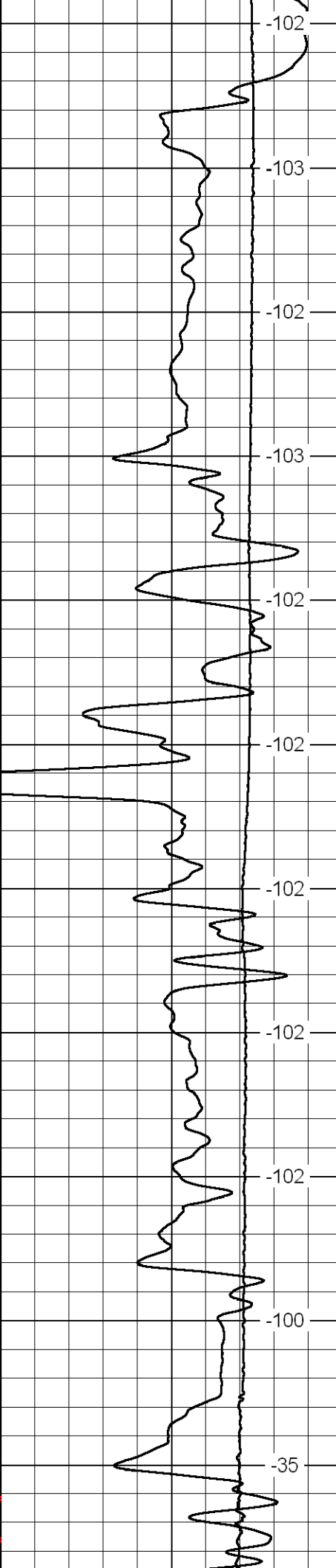
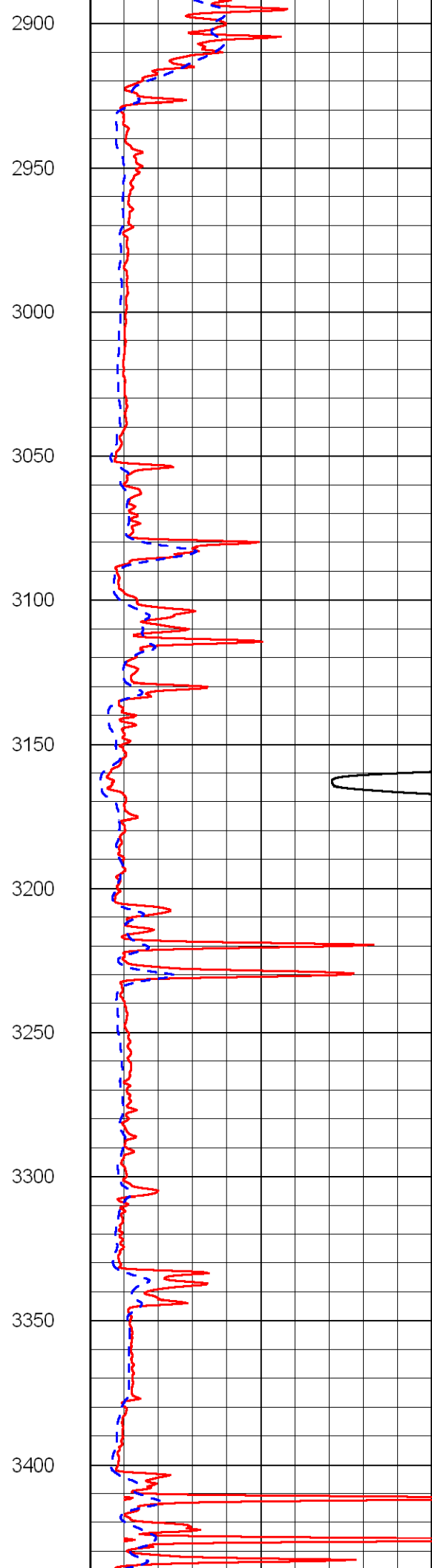
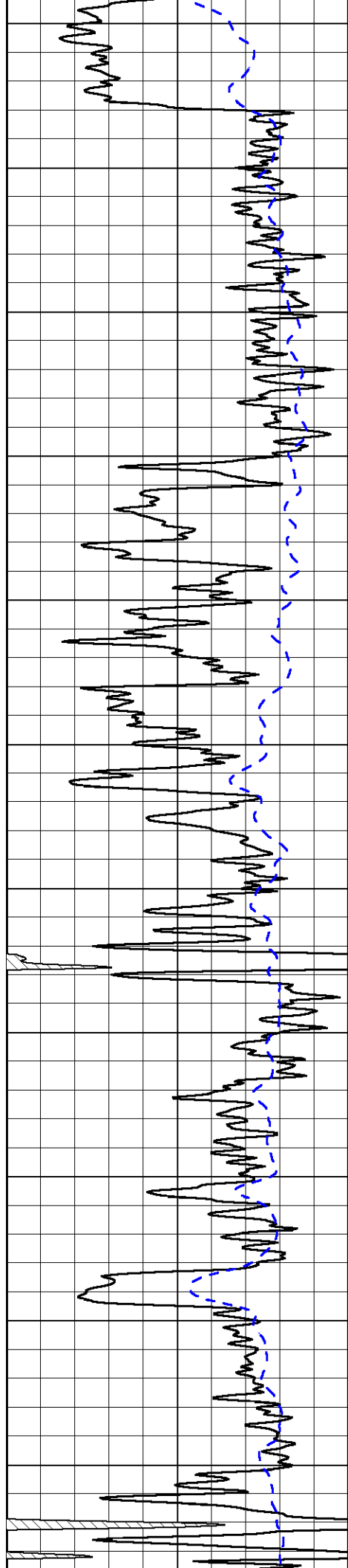
50	Shallow Resistivity	500
50	Deep Resistivity	500

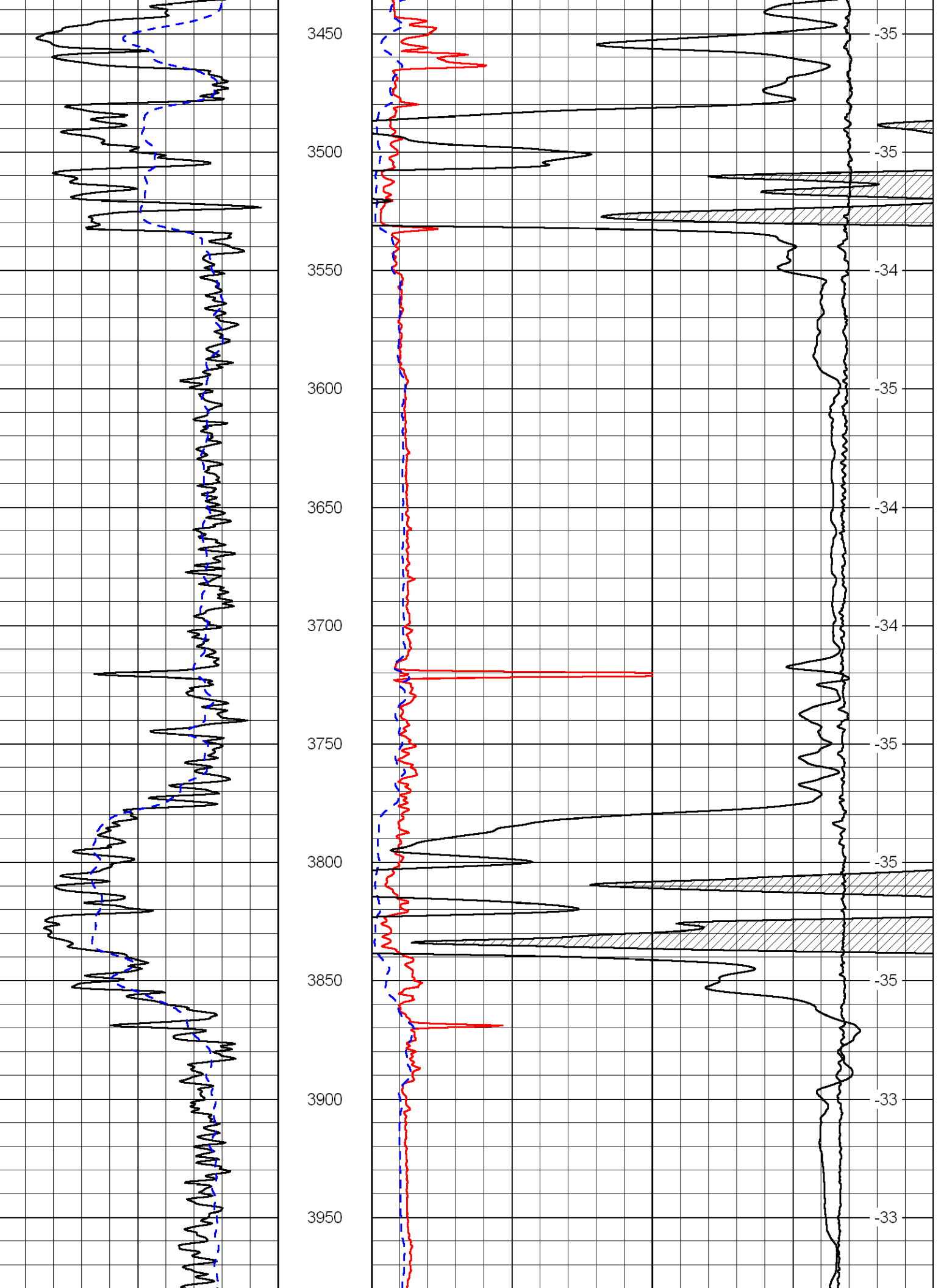


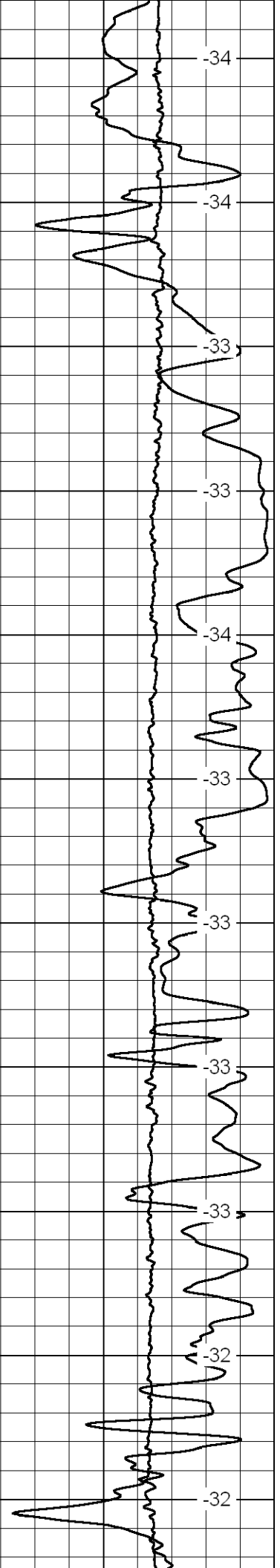
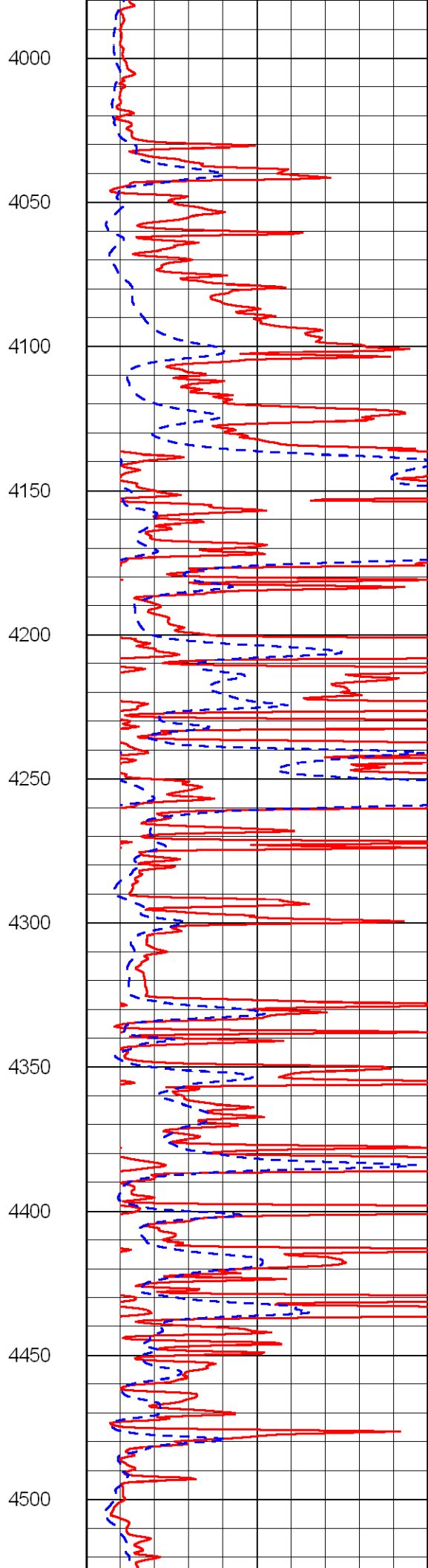
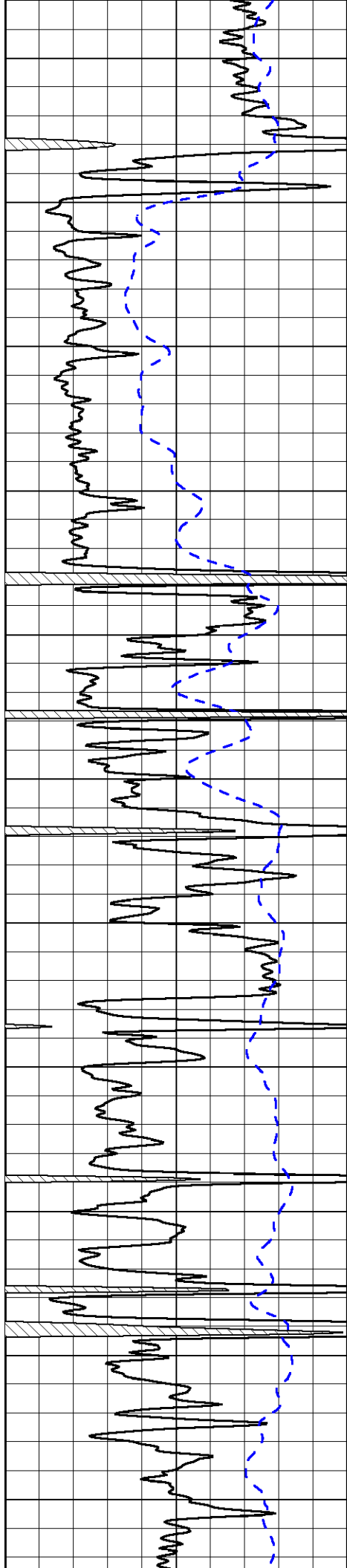


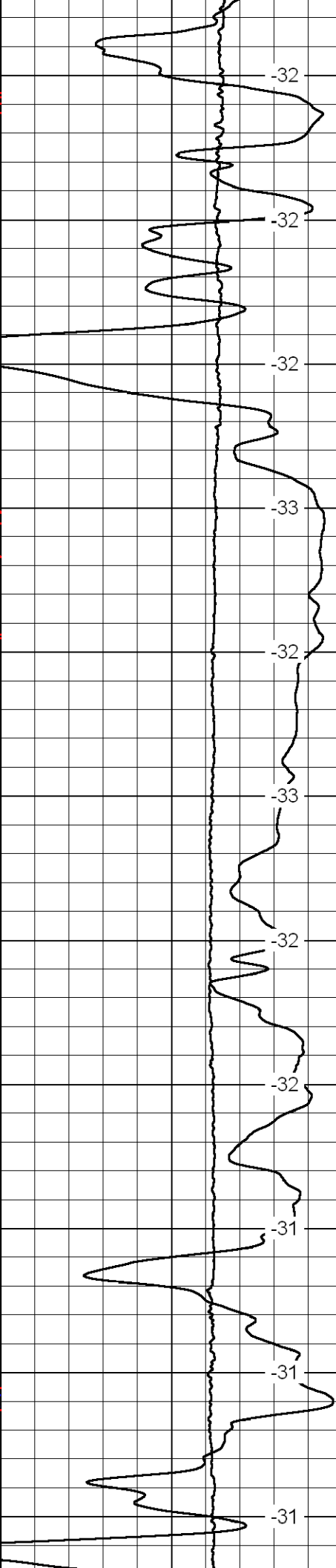
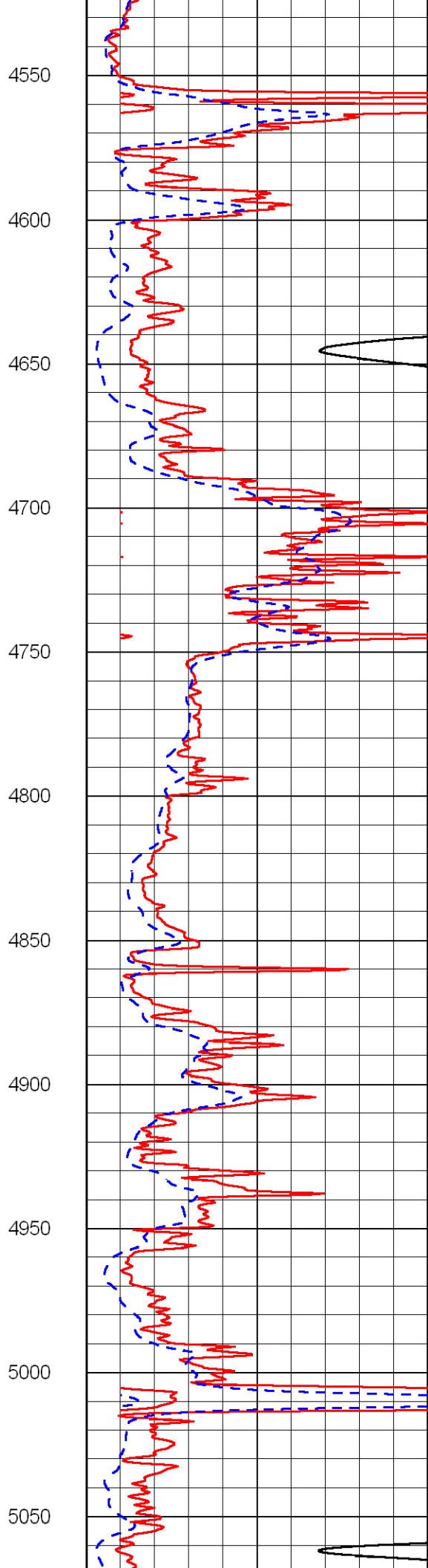
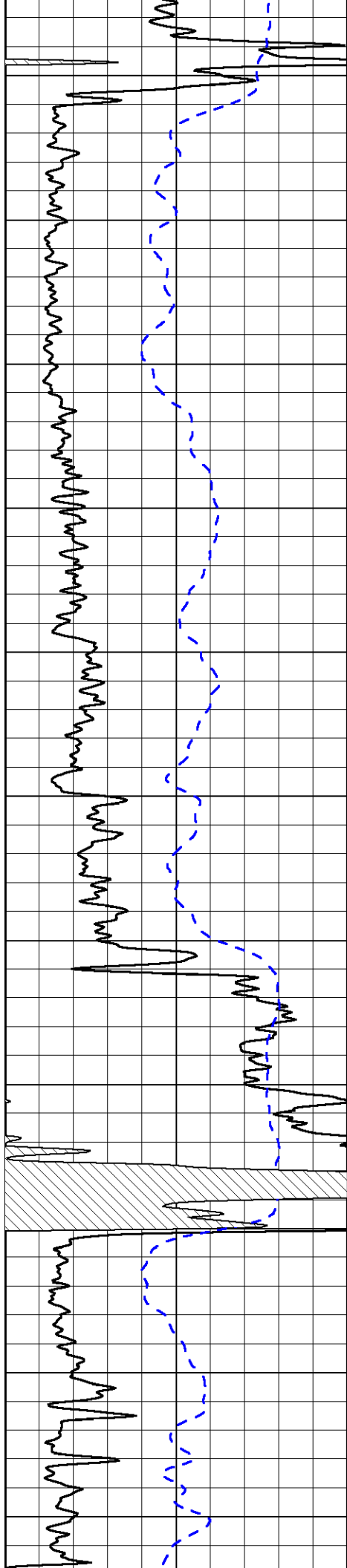


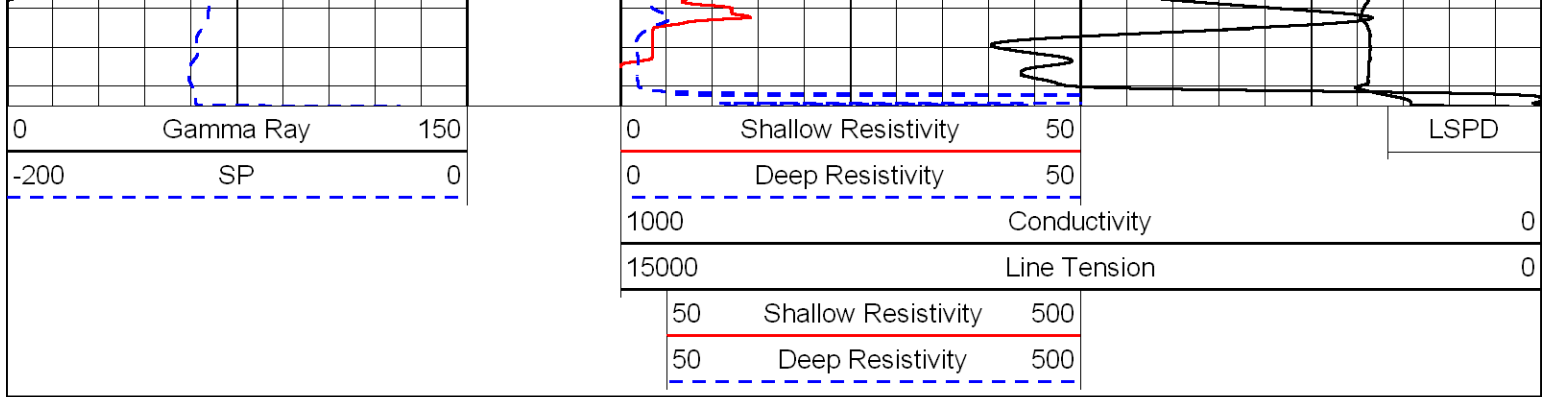




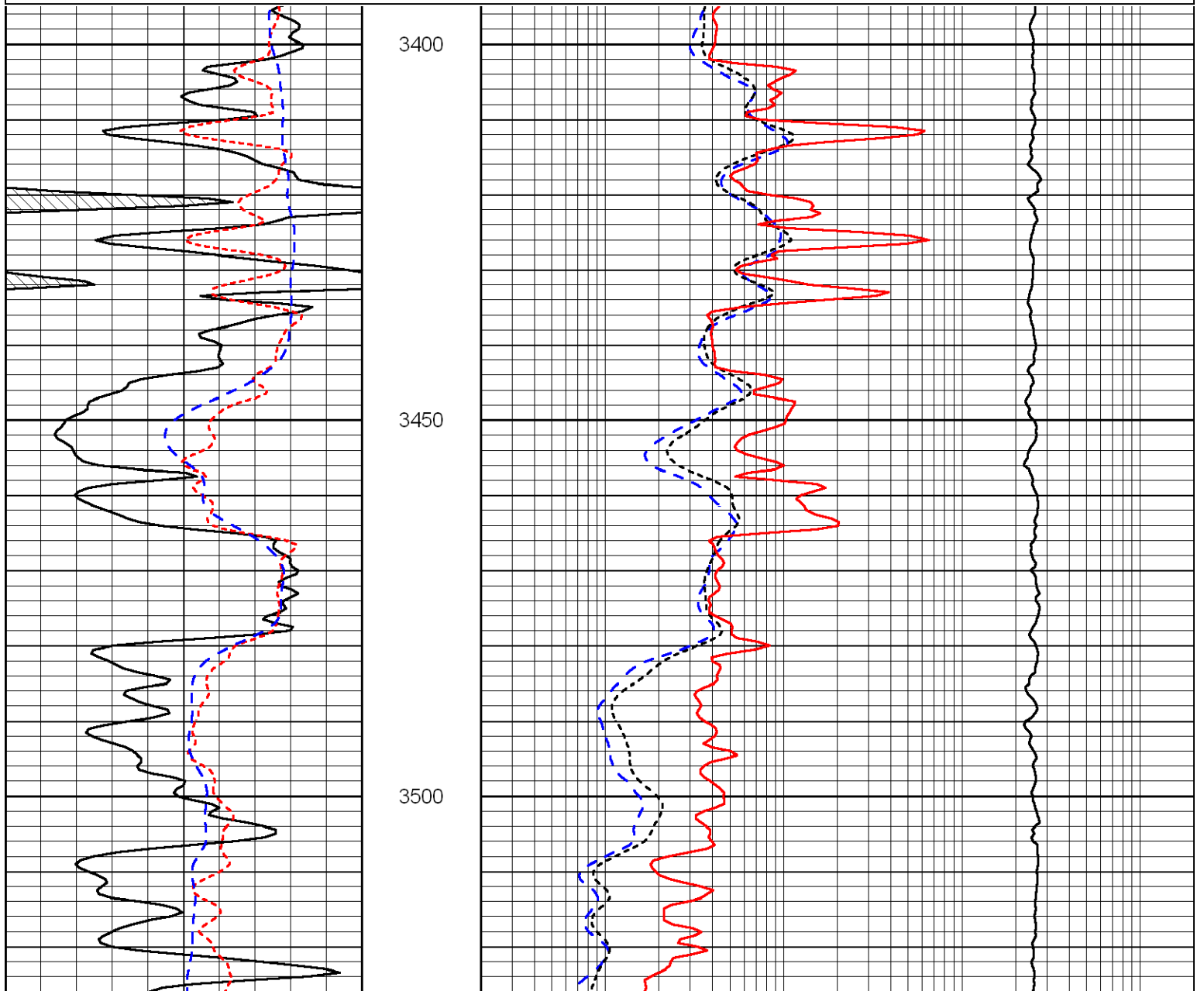
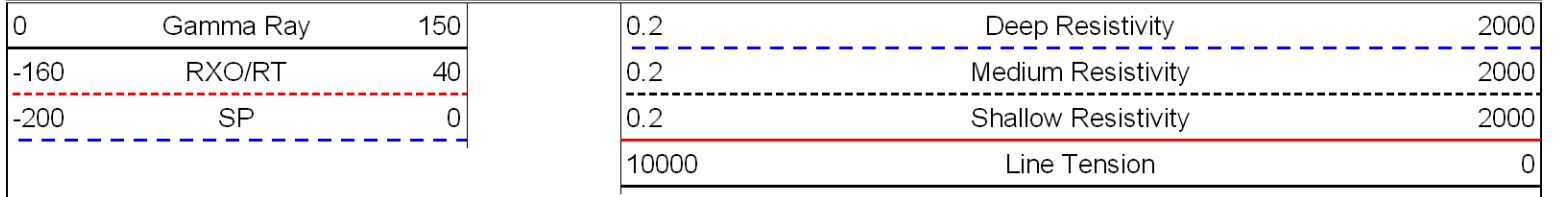


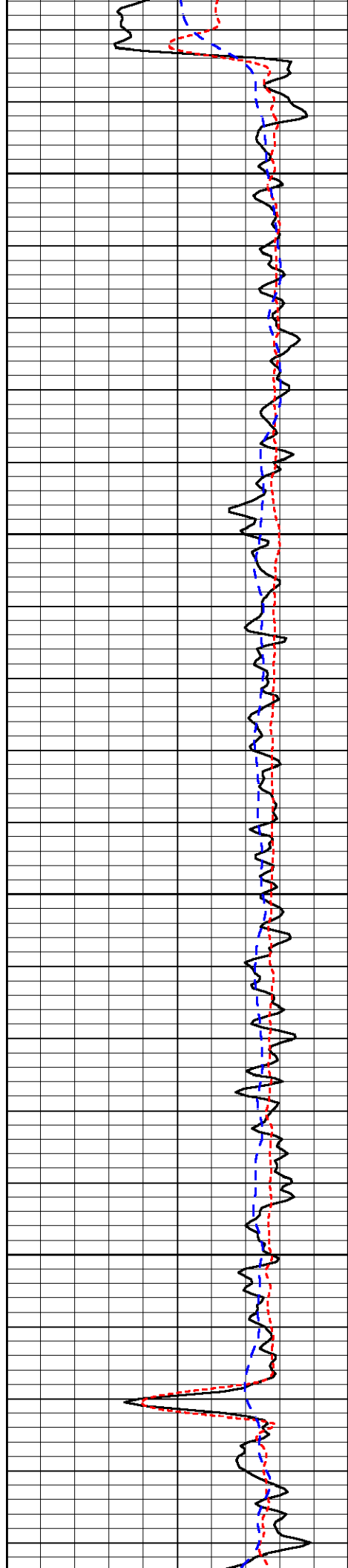






Database File: griffin_fanning-2hd.db
 Dataset Pathname: dil/griffin2in
 Presentation Format: dil
 Dataset Creation: Sat Jun 12 20:30:24 2010
 Charted by: Depth in Feet scaled 1:240



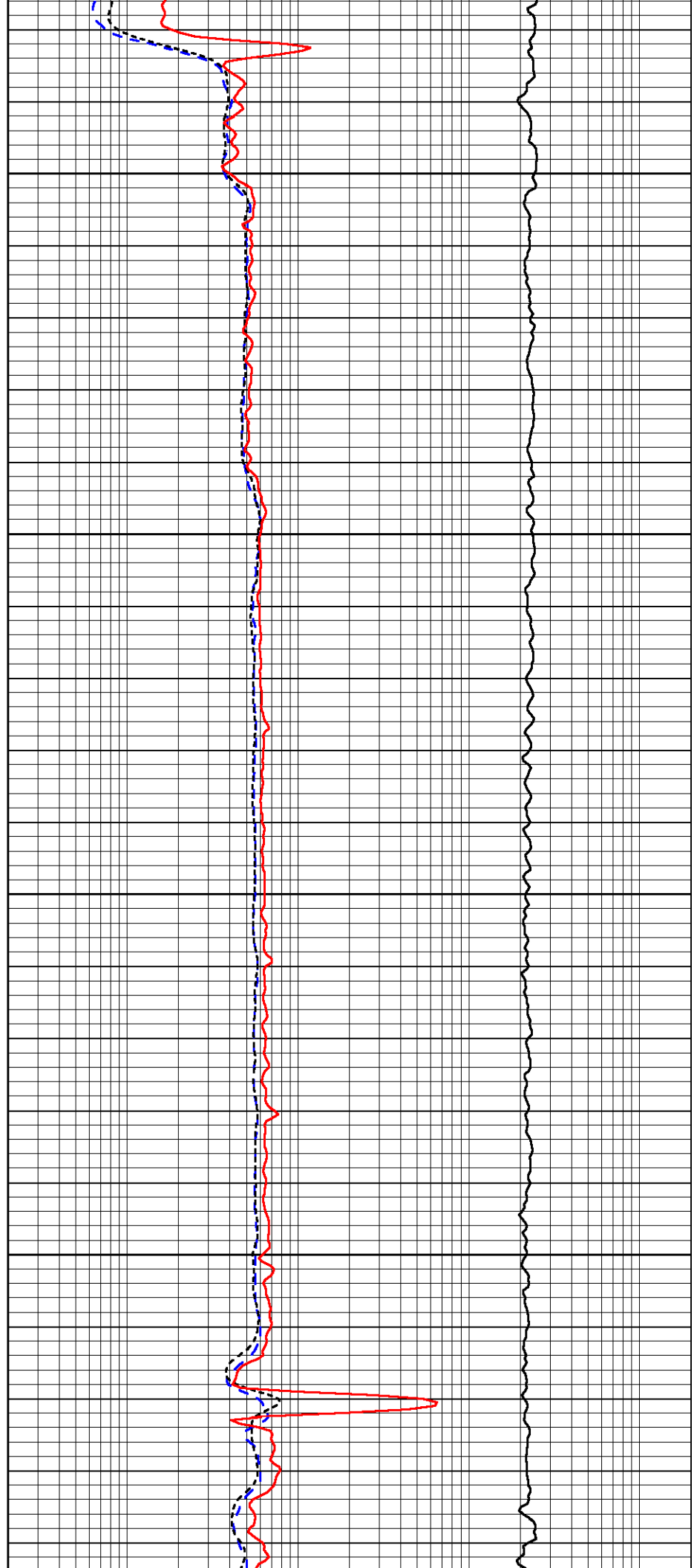


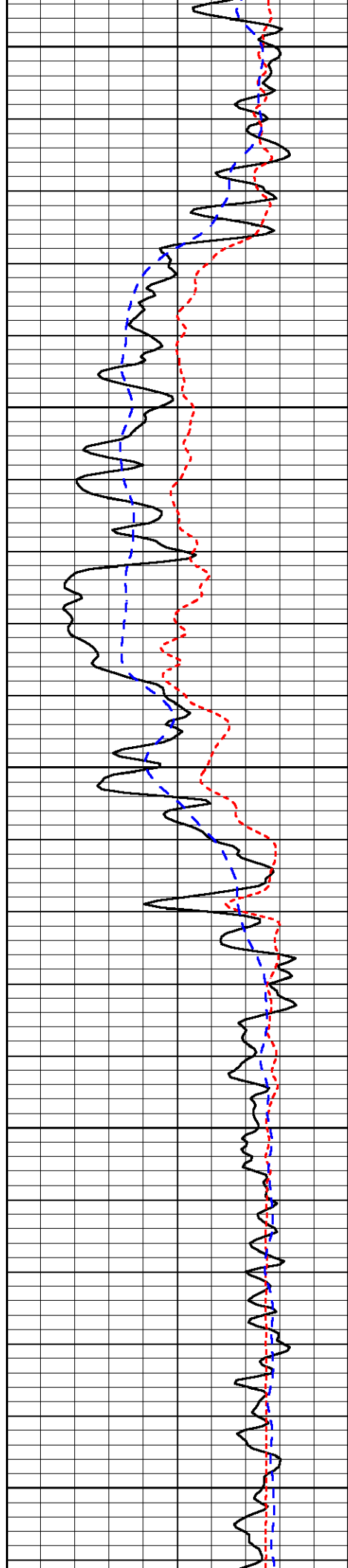
3550

3600

3650

3700





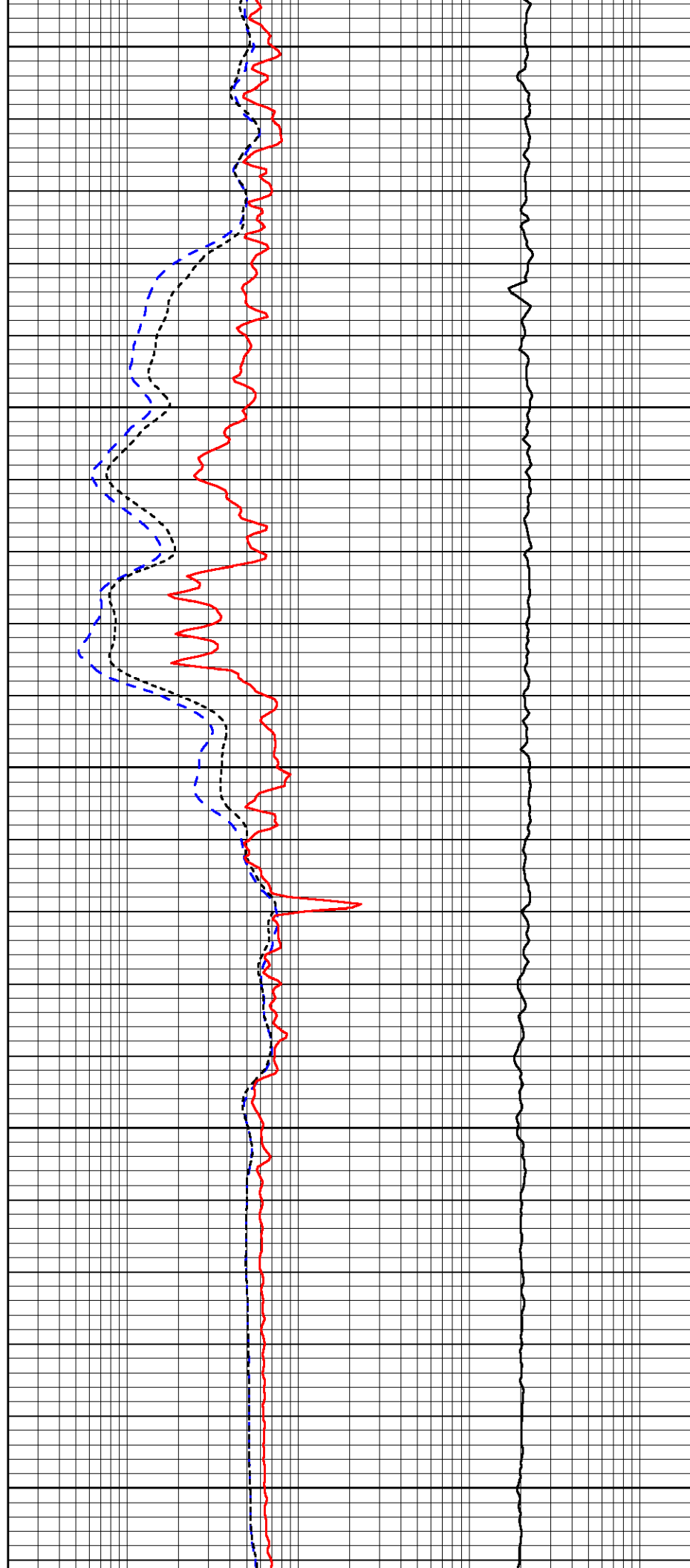
3750

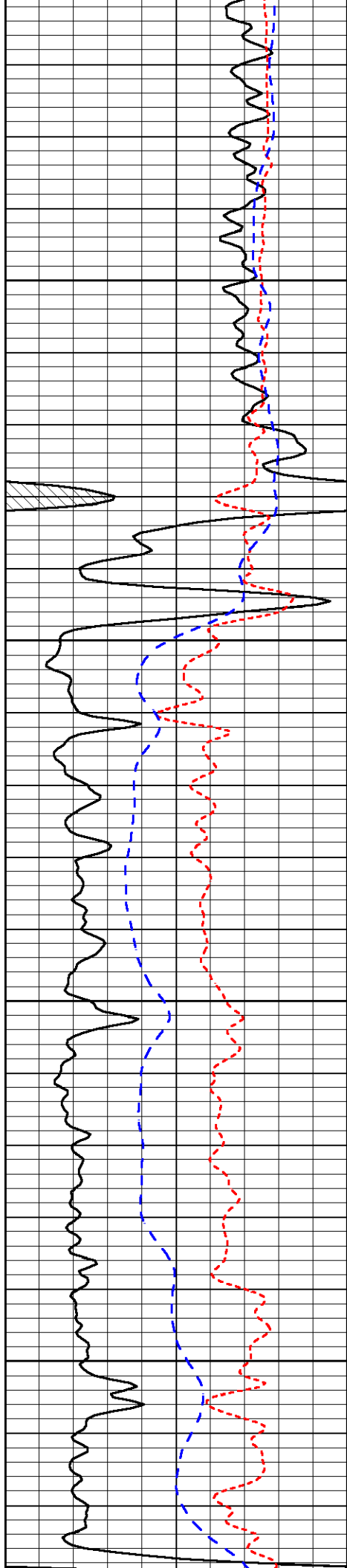
3800

3850

3900

3950



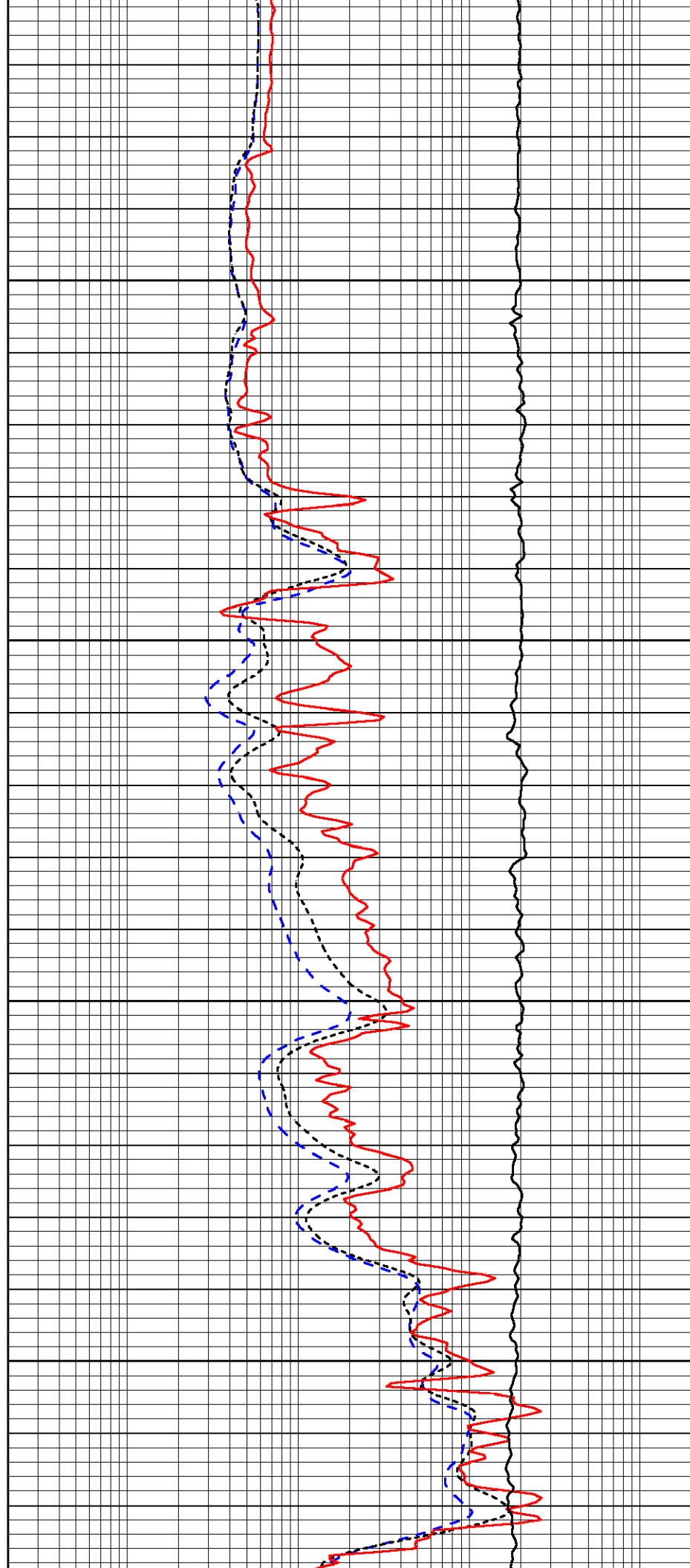


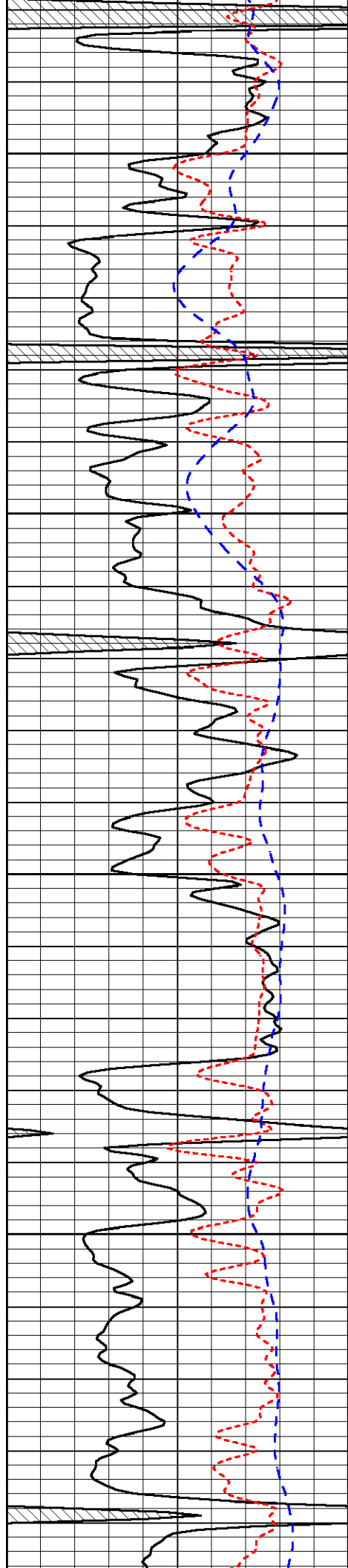
4000

4050

4100

4150



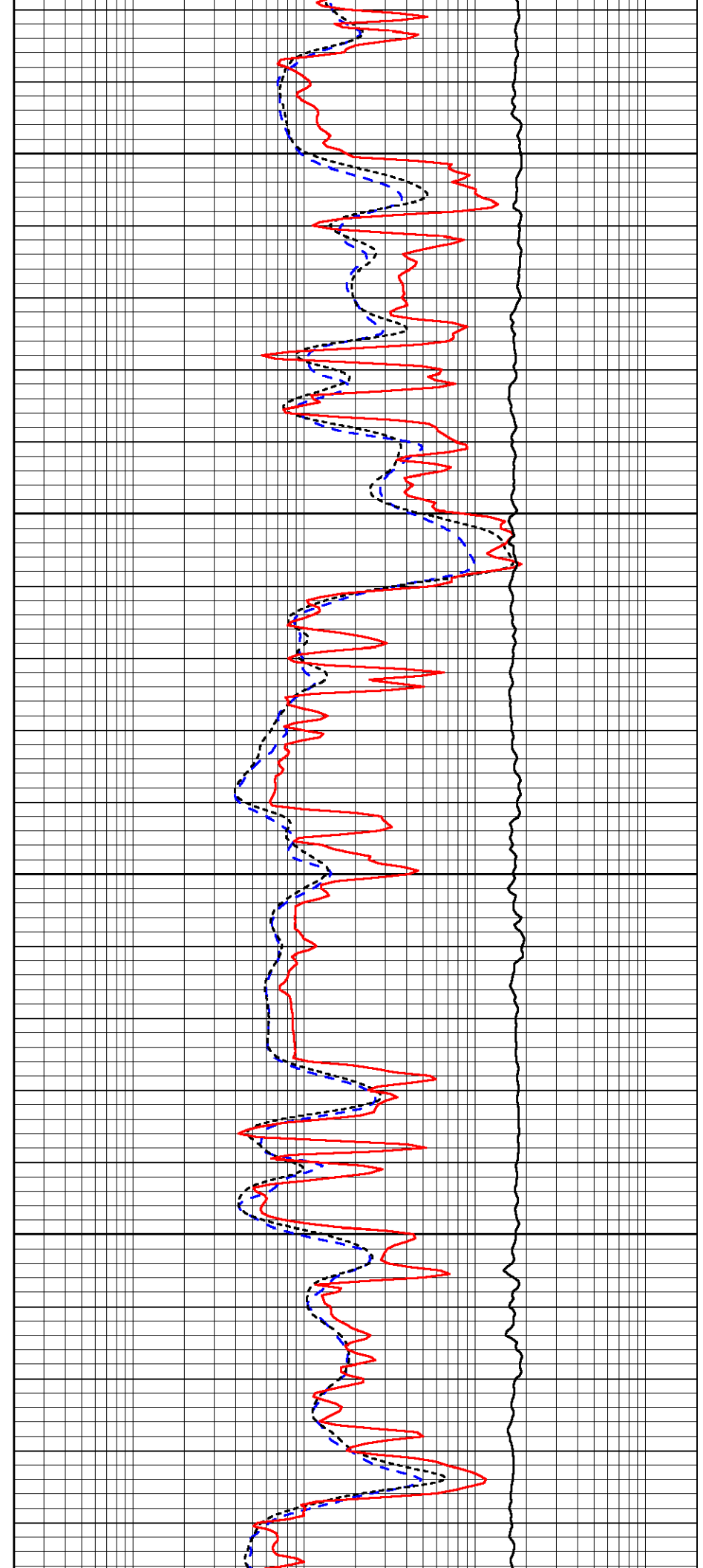


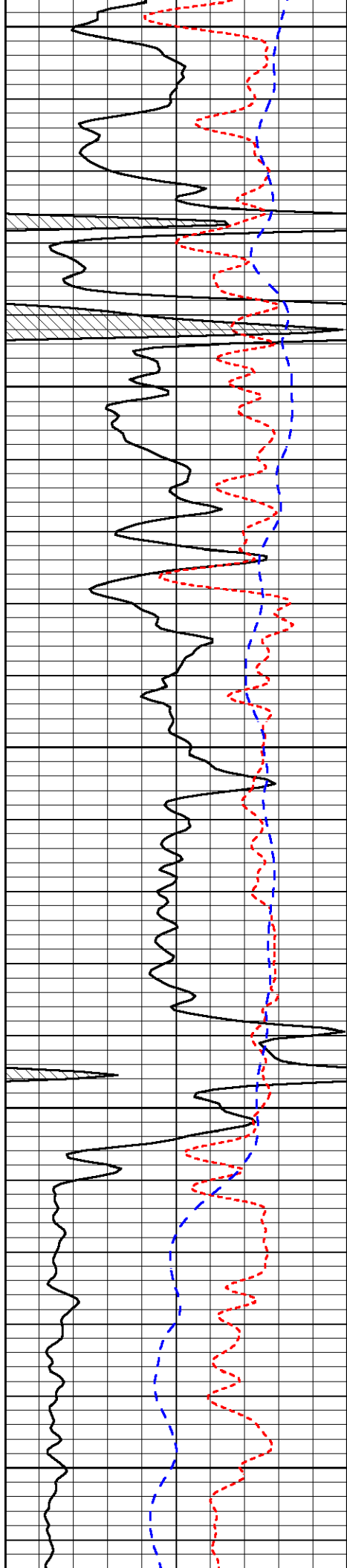
4200

4250

4300

4350





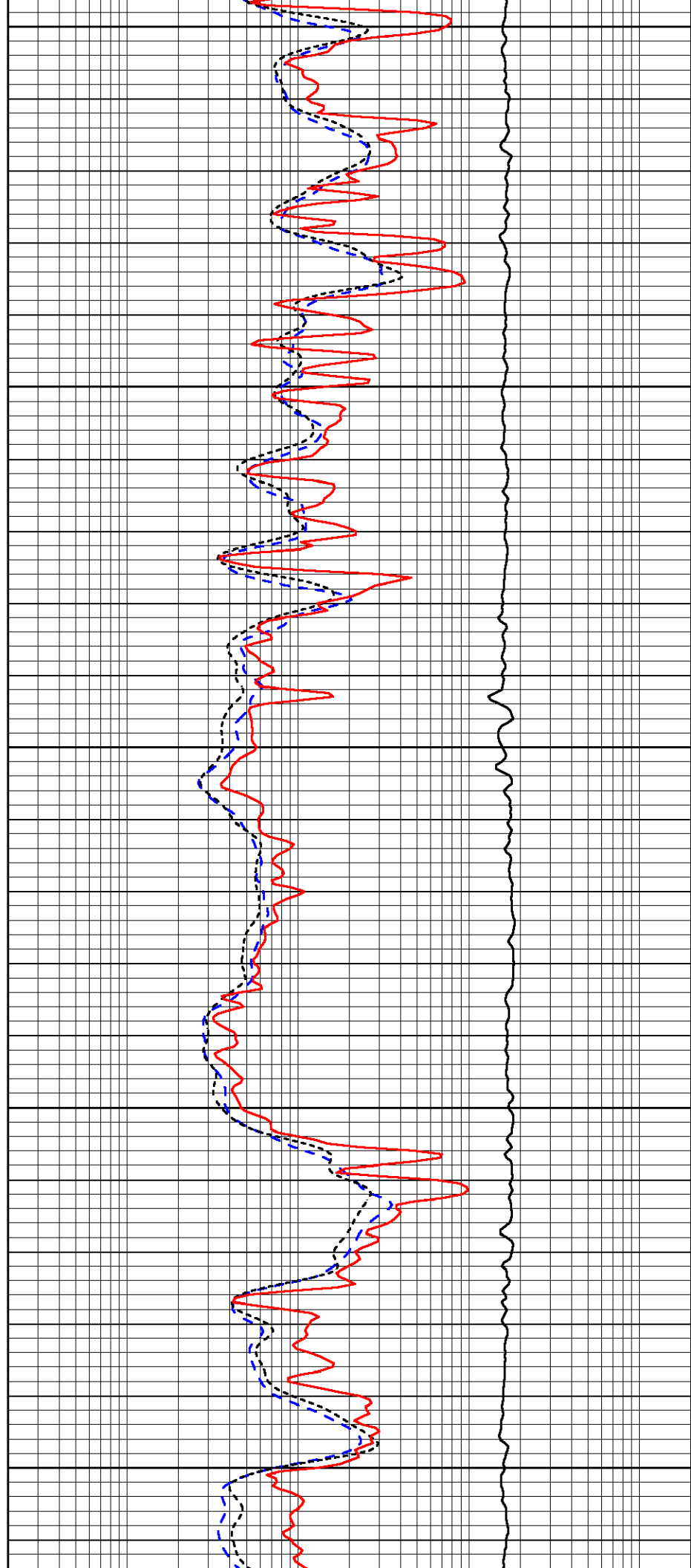
4400

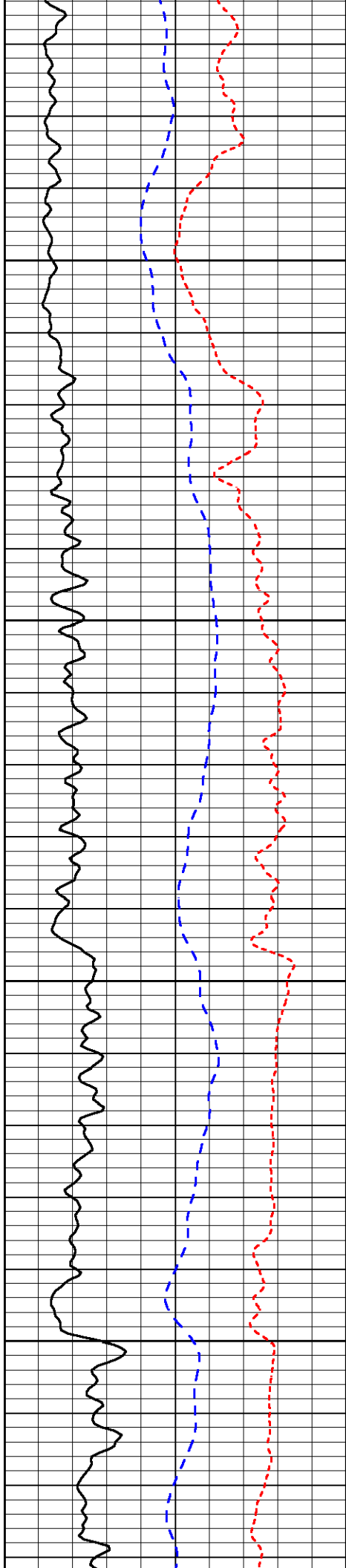
4450

4500

4550

4600



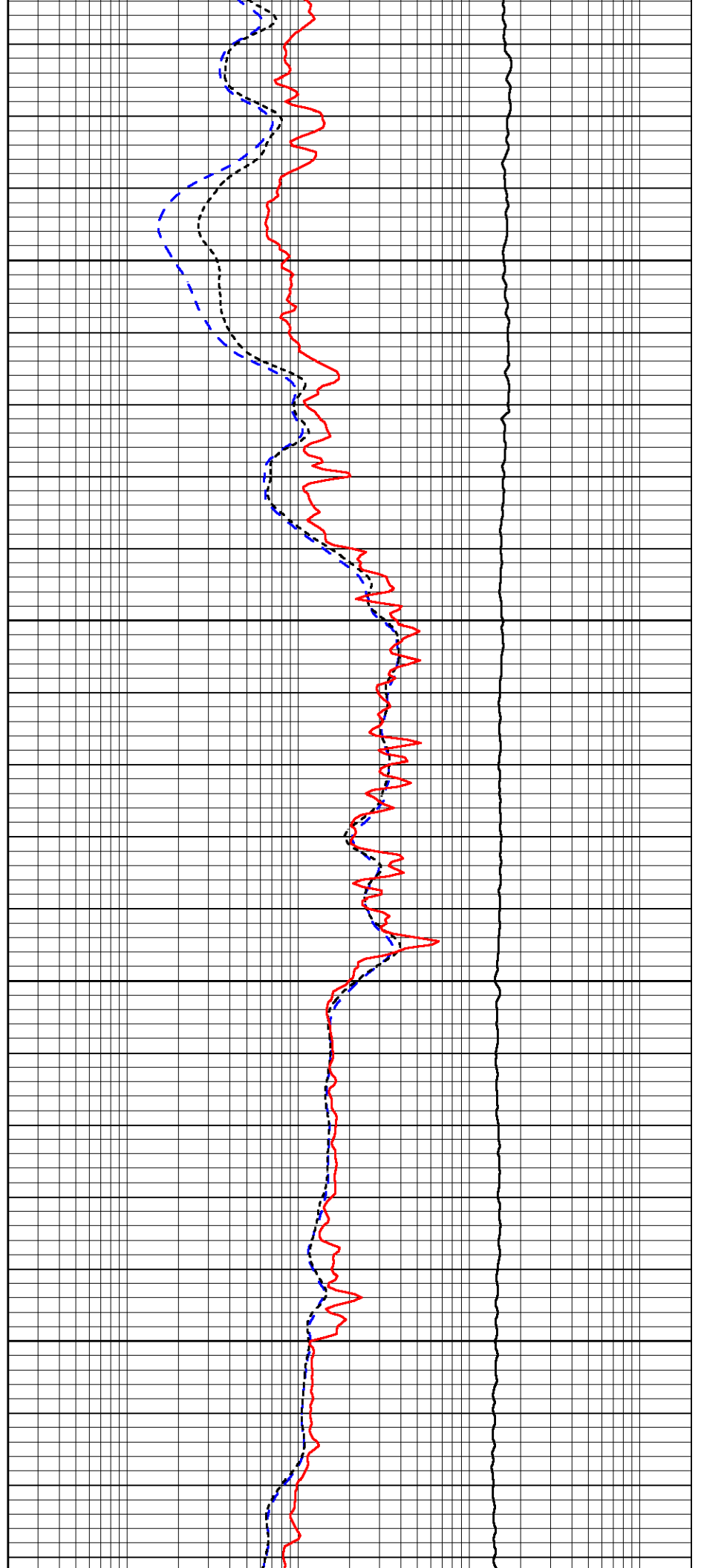


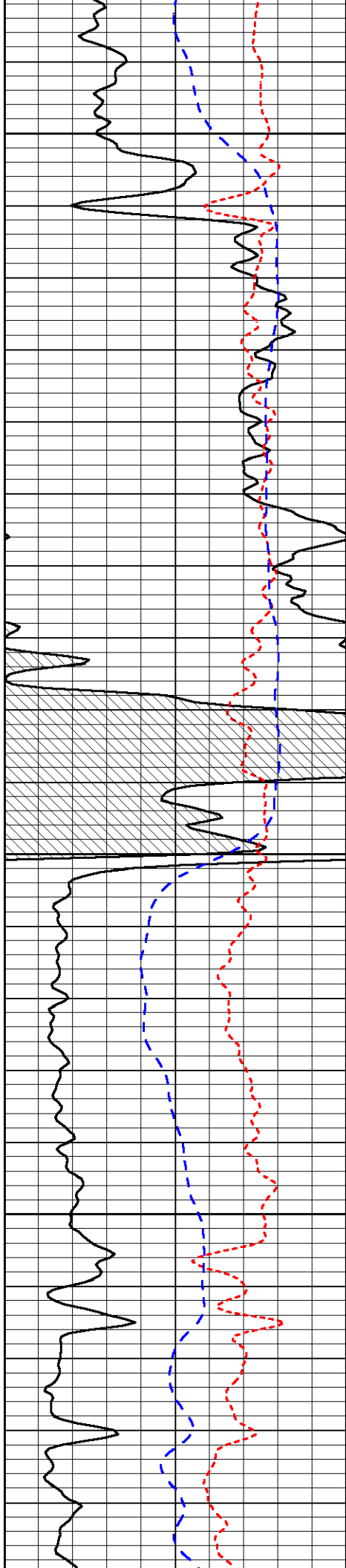
4650

4700

4750

4800



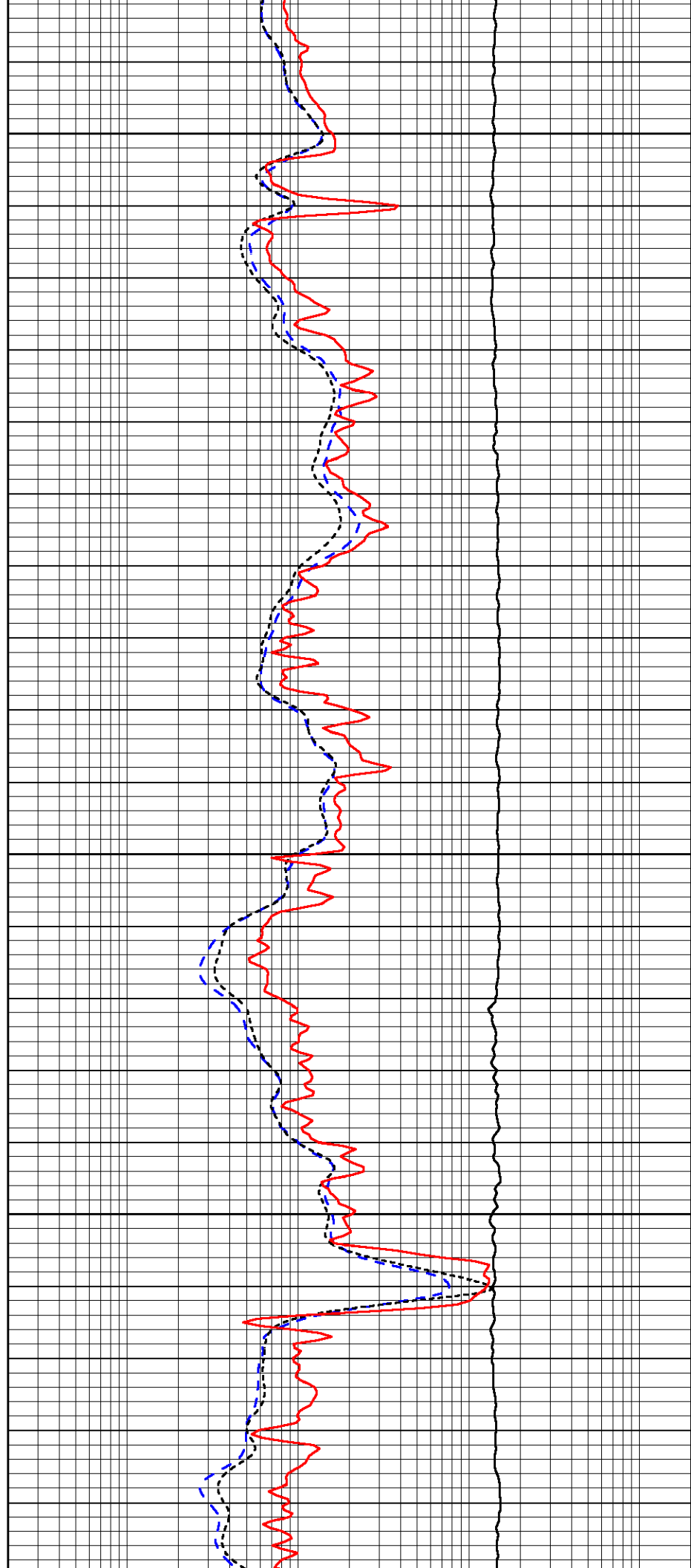


4850

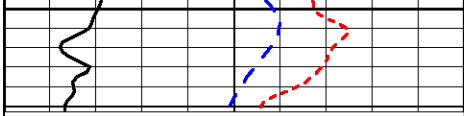
4900

4950

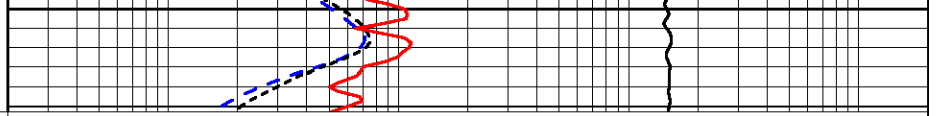
5000



5050



0	Gamma Ray	150
-160	RXO/RT	40
-200	SP	0



0.2	Deep Resistivity	2000
0.2	Medium Resistivity	2000
0.2	Shallow Resistivity	2000
10000	Line Tension	0