



Dual Compensated  
Porosity Log

DIGITAL LOG (785) 625-3858

API No. 15-077-21,682-00-00

Company **Charles N. Griffin**  
 Well **Fanning No. 3**  
 Field **Hibbord Northeast**  
 County **Harper** State **Kansas**

Location **2,310' FSL & 330' FEL**

Sec: **11** Twp: **34S** Rge: **9W**

Other Services  
DIL

Permanent Datum **Ground Level** Elevation **1300**  
 Log Measured From **Kelly Bushing** 10 Ft. Above Perm. Datum  
 Drilling Measured From **Kelly Bushing**

Elevation  
K.B. 1310  
D.F. 1300  
G.L. 1300

Date **7/3/2010**

Run Number **One**

Type Log **CNL / CDL**

Depth Driller **4714**

Depth Logger **4708**

Bottom Logged Interval **4687**

Top Logged Interval **3400**

Type Fluid In Hole **Chemical**

Salinity, PPM CL **6000**

Density **9.6**

Level **Full**

Max. Rec. Temp. F **123**

Operating Rig Time **3 Hours**

Equipment -- Location **10 Hays**

Recorded By **J. Long**

Witnessed By **Bruce Reed**

Borehole Record		Casing Record				
Run No	Bit From	To	Size	Wgt.	From	To
One	12.25	00	270	8.625	23#	00
Two	7.875	270	TD			270

<<< Fold Here >>>

All interpretations are opinions based on inferences from electrical or other measurements and we cannot and do not guarantee the accuracy or correctness of any interpretation, and we shall not, except in the case of gross or willful negligence on our part, be liable or responsible for any loss, costs, damages, or expenses incurred or sustained by anyone resulting from any interpretation made by any of our officers, agents or employees. These interpretations are also subject to our general terms and conditions set out in our current Price Schedule.

Comments

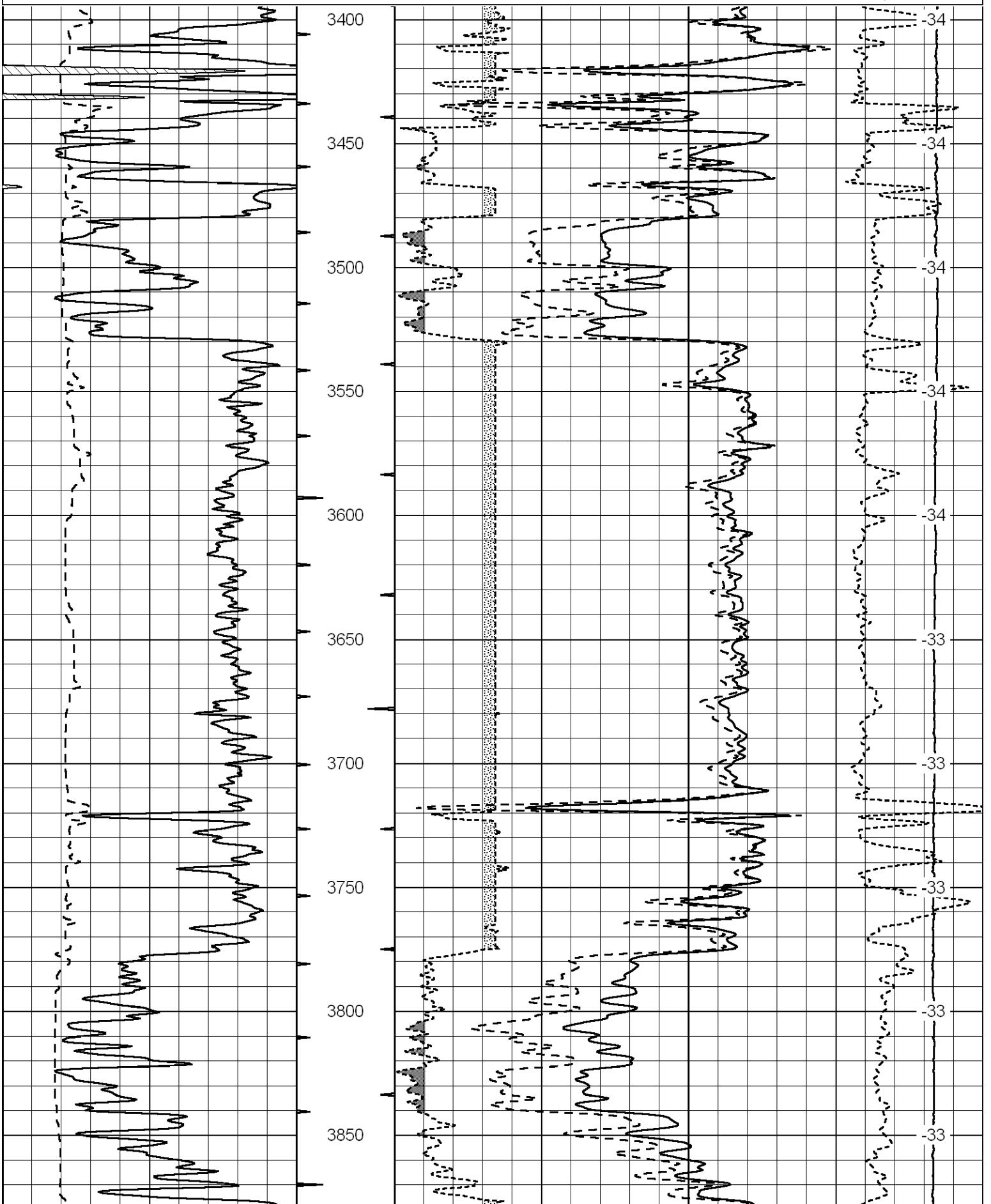
Thank you for using Log-Tech, Inc.  
 (785) 625-3858

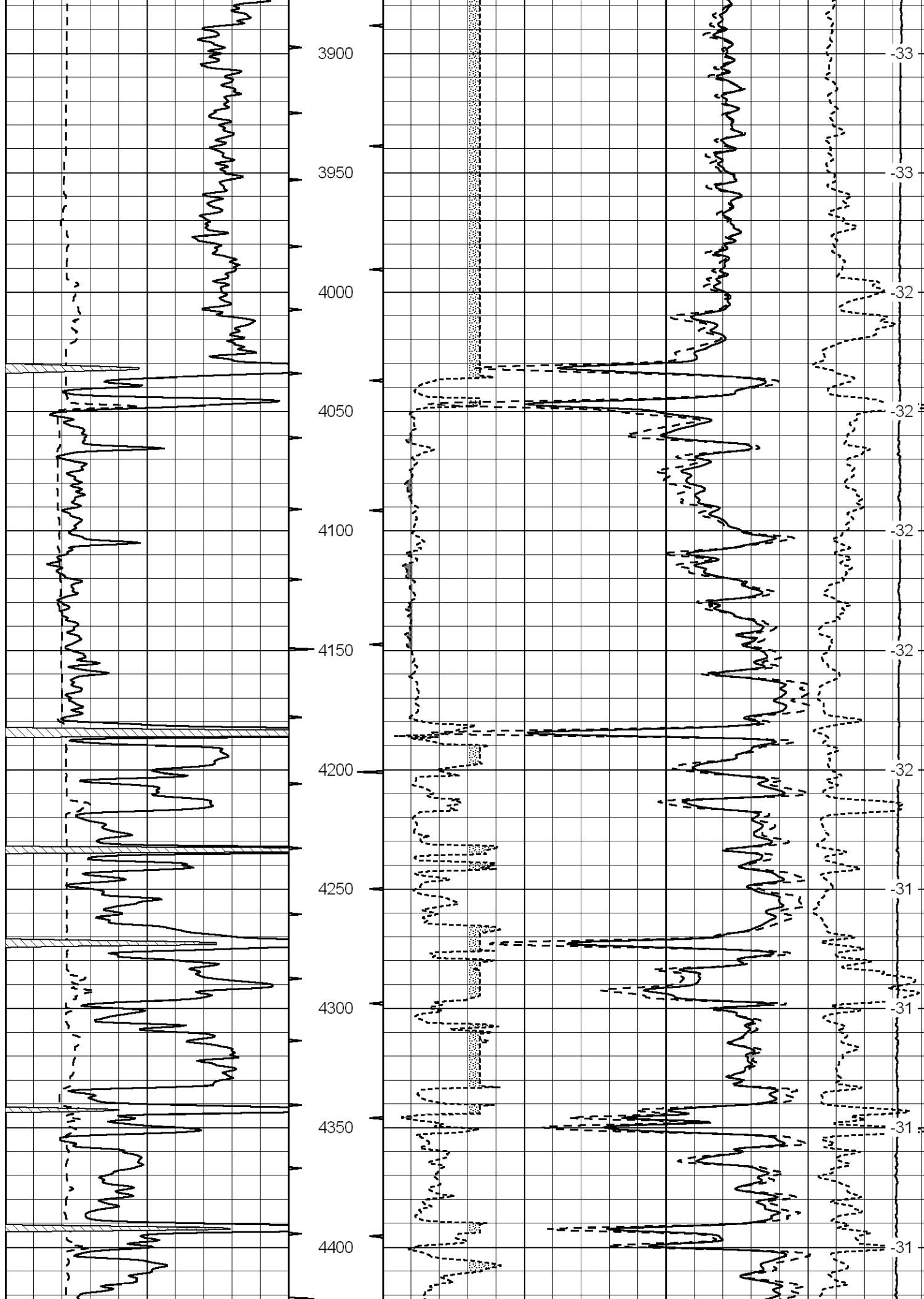
Anthony, 12 West to 120th Ave., 3 1/2 South, West Into

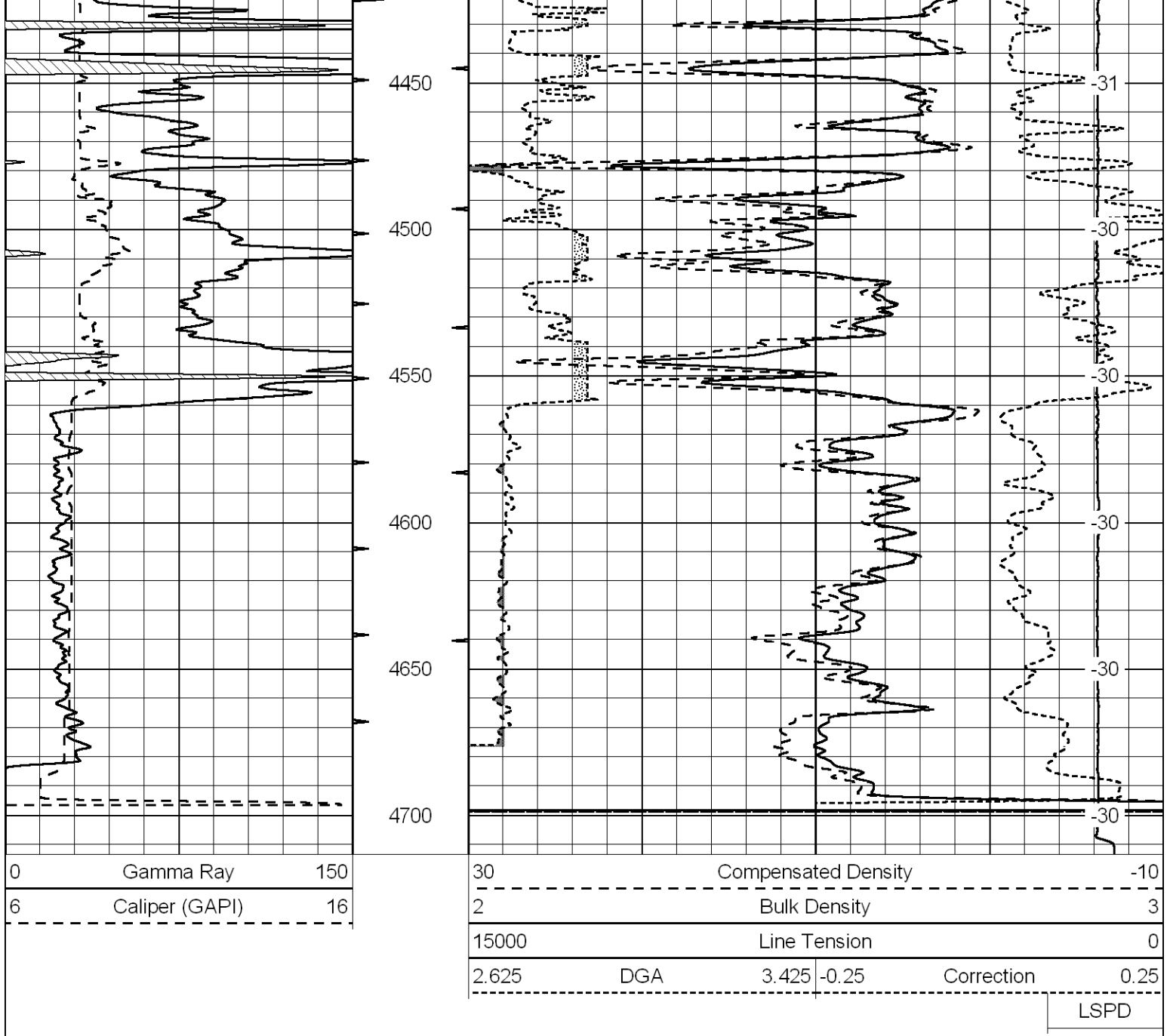
Database File: charlesgriffin\_fanning\_3hd.db  
 Dataset Pathname: dil/cgstck  
 Presentation Format: cdl  
 Dataset Creation: Sun Jul 04 00:41:48 2010  
 Charted by: Depth in Feet scaled 1:600

0	Gamma Ray	150
6	Caliper (GAPI)	16

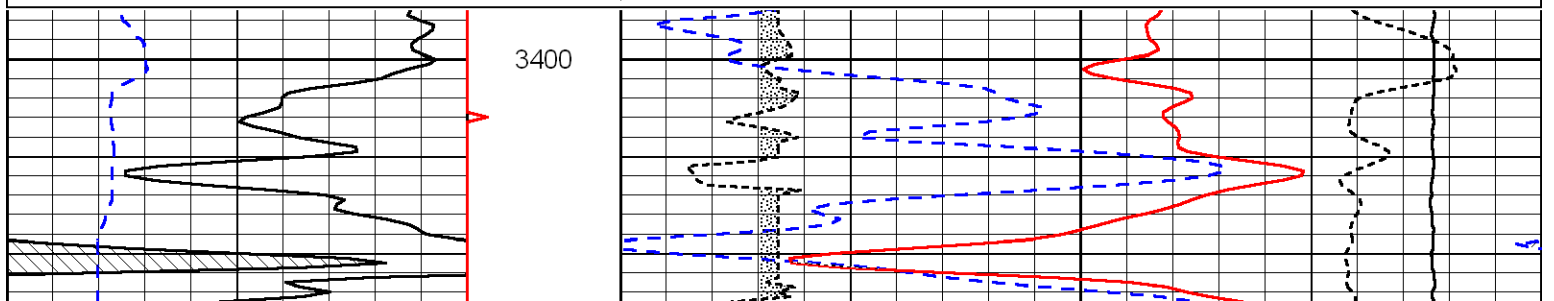
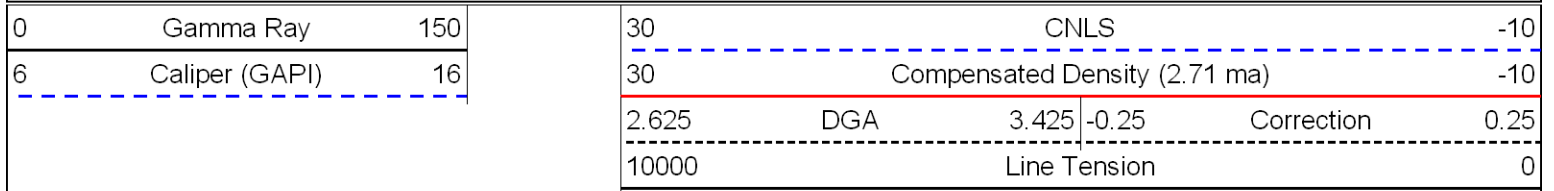
30	Compensated Density		-10
2	Bulk Density		3
15000	Line Tension		0
2.625	DGA	3.425	-0.25
Correction			0.25

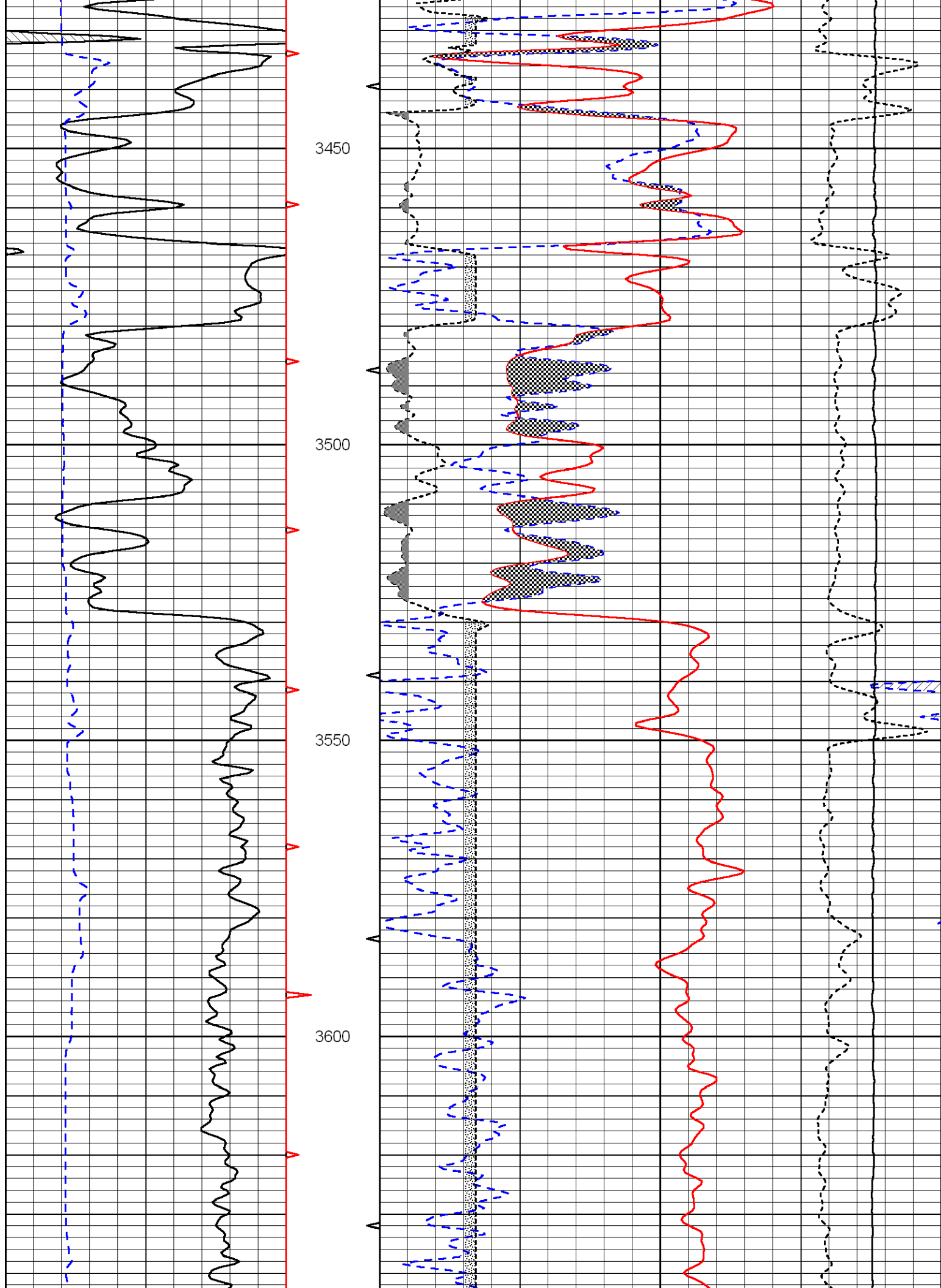


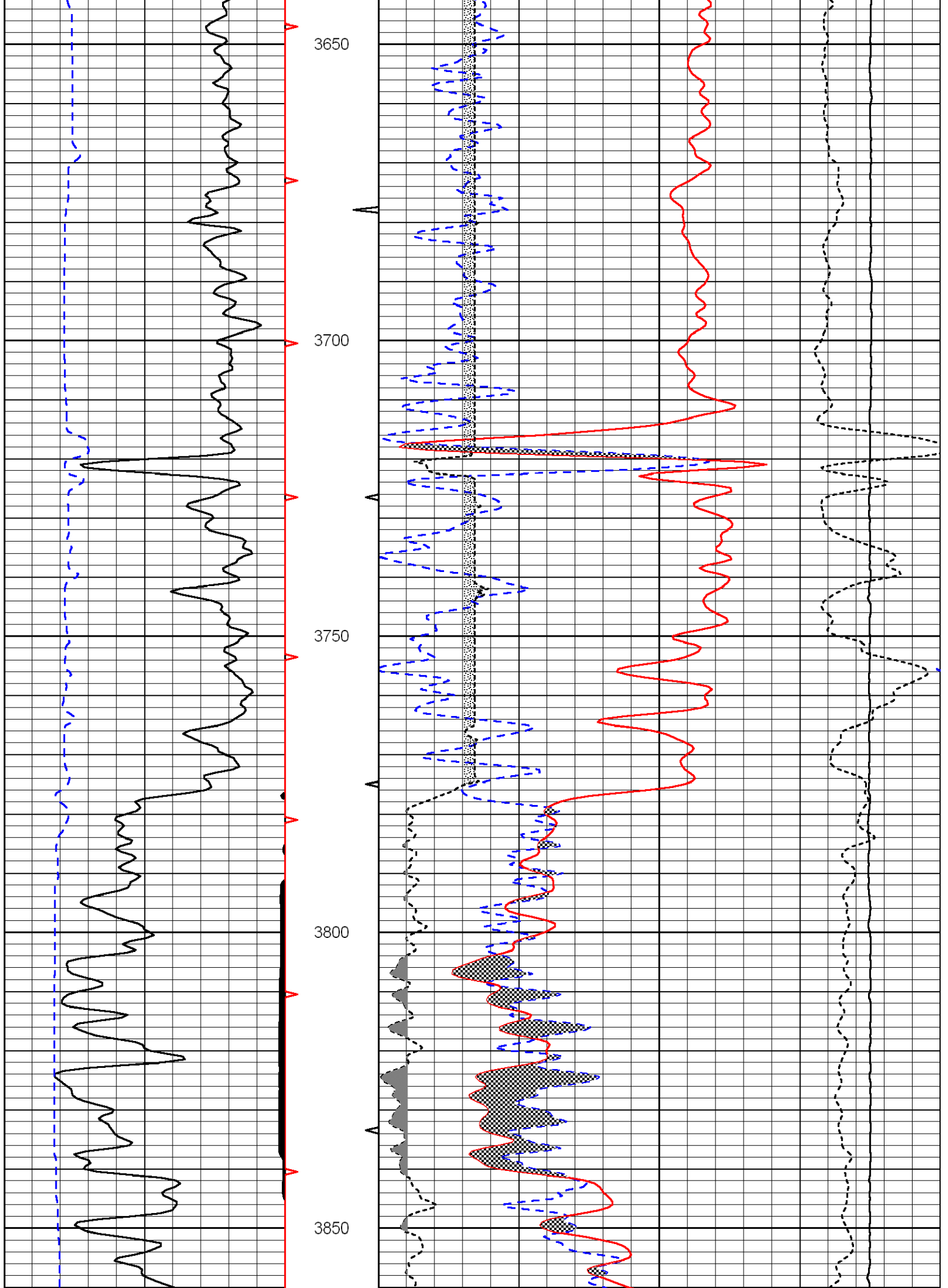


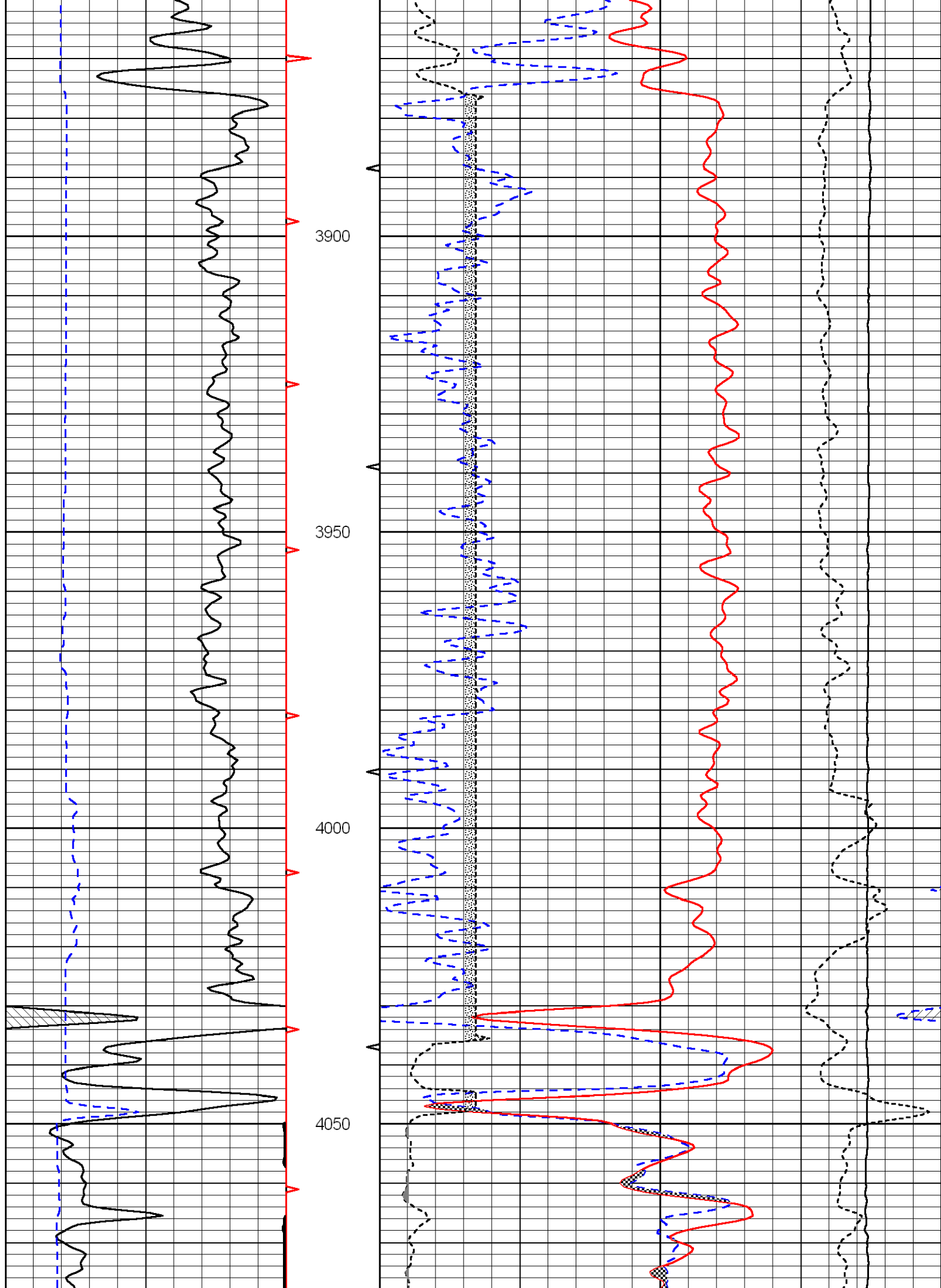


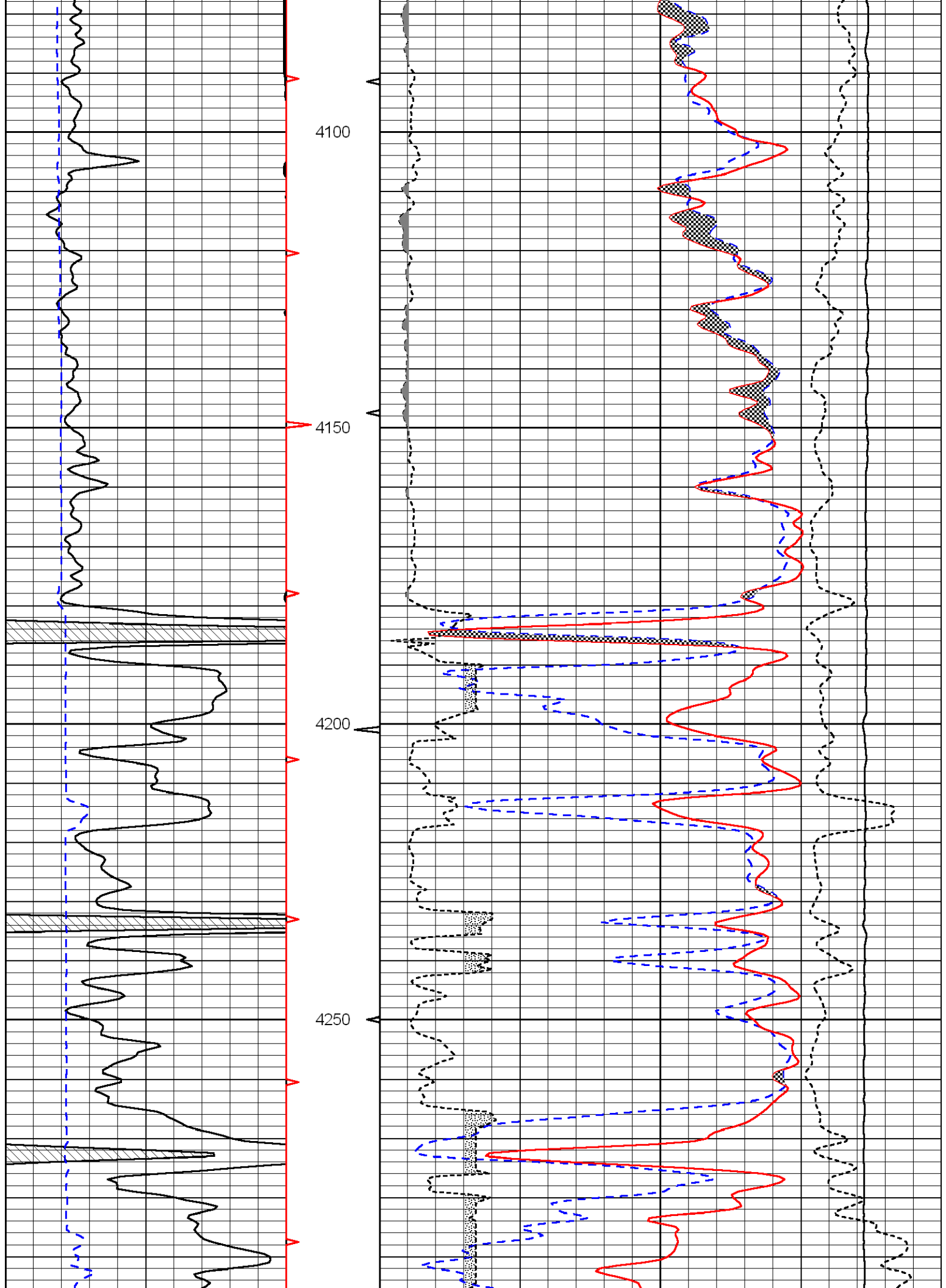
Database File: charlesgriffin\_fanning\_3hd.db  
 Dataset Pathname: dil/cgstck  
 Presentation Format: cndlspec  
 Dataset Creation: Sun Jul 04 00:41:48 2010  
 Charted by: Depth in Feet scaled 1:240



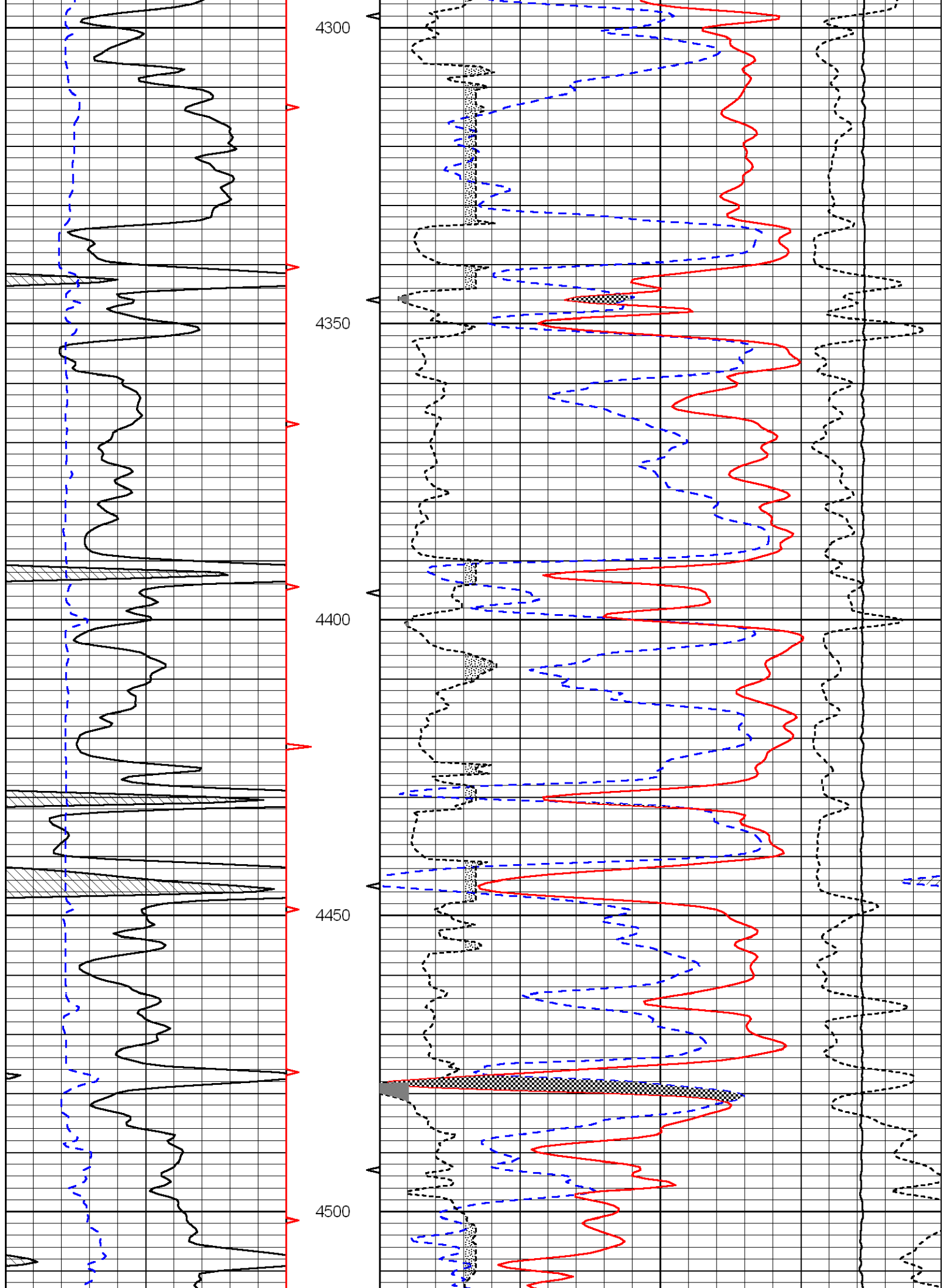


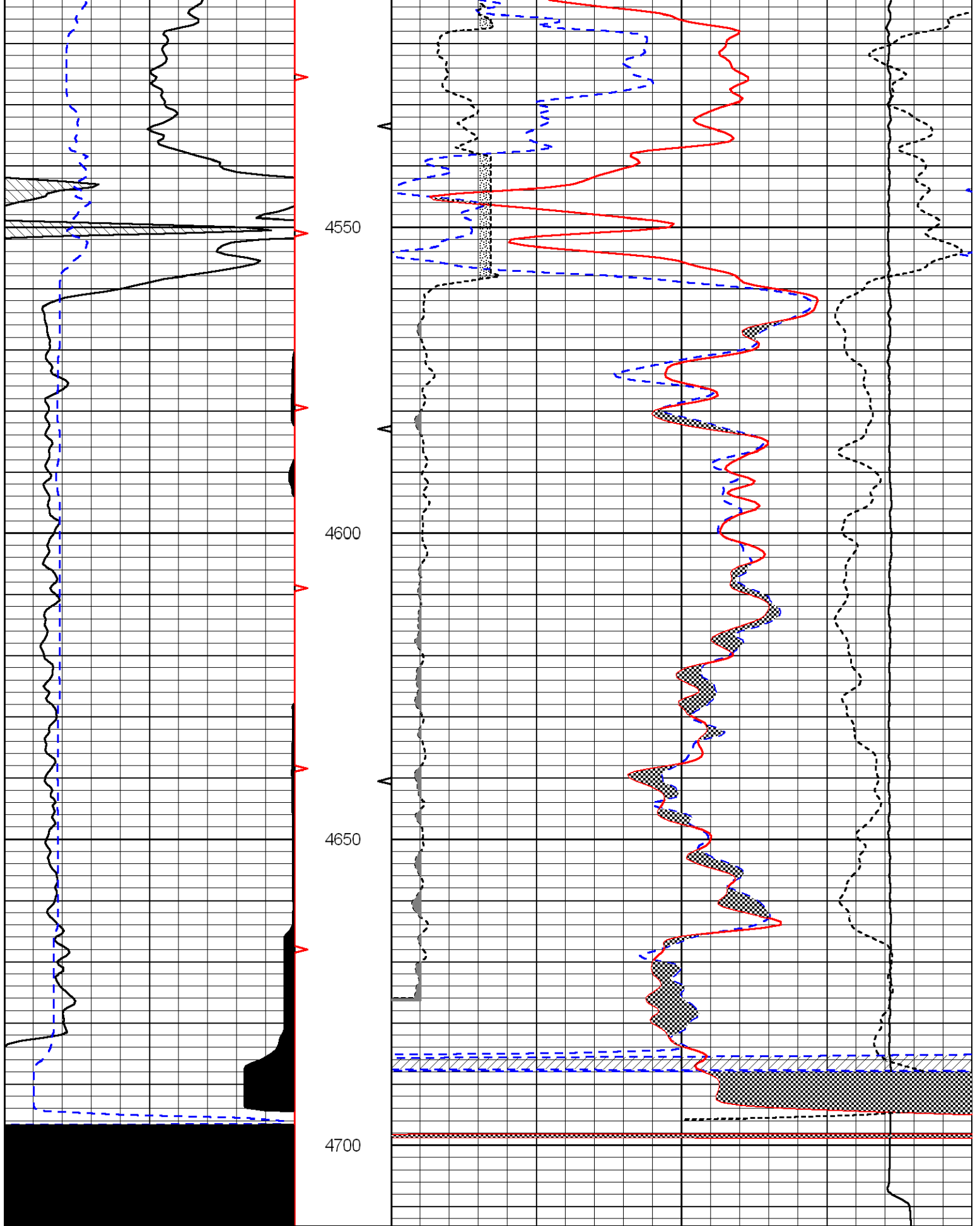












0	Gamma Ray	150
6	Caliper (GAPI)	16

30	CNLS	-10
30	Compensated Density (2.71 ma)	-10

2.625	DGA	3.425	-0.25	Correction	0.25
10000	Line Tension				0

