



Dual Induction Log

DIGITAL LOG (785) 625-3858

API No.	15-077-21,682-00-00	
Company	Charles N. Griffin	
Well	Fanning No. 3	
Field	Hibbord Northeast	
County	Harper	State
Location	2,310' FSL & 330' FEL	
Sec: 11	Twp: 34S	Rge: 9W
Other Services	CNL/CDL	
Elevation	K.B. 1310 D.F. 1300 G.L. 1300	

Permanent Datum	Ground Level	Elevation 1300
Log Measured From	Kelly Bushing	10 Ft. Above Perm. Datum
Drilling Measured From	Kelly Bushing	
Date	7/3/2010	
Run Number	One	
Depth Driller	4714	
Depth Logger	4708	
Bottom Logged Interval	4707	
Top Log Interval	250	
Casing Driller	8.625 @ 270	
Casing Logger		
Bit Size	7.875	
Type Fluid in Hole	Chemical	
Salinity, ppm CL	6000	
Density / Viscosity	9.6	54
pH / Fluid Loss	9.5	12.8
Source of Sample	Flowline	
Rm @ Meas. Temp	1.00 @ 80	
Rmf @ Meas. Temp	.75 @ 80	
Rmc @ Meas. Temp	1.35 @ 80	
Source of Rmf / Rmc	Charts	
Rm @ BHT	.65 @ 123	
Operating Rig Time	3 Hours	
Max Rec. Temp. F	123	
Equipment Number	10	
Location	Hays	
Recorded By	J. Long	
Witnessed By	Bruce Reed	

<<< Fold Here >>>

All interpretations are opinions based on inferences from electrical or other measurements and we cannot and do not guarantee the accuracy or correctness of any interpretation, and we shall not, except in the case of gross or willful negligence on our part, be liable or responsible for any loss, costs, damages, or expenses incurred or sustained by anyone resulting from any interpretation made by any of our officers, agents or employees. These interpretations are also subject to our general terms and conditions set out in our current Price Schedule.

Comments

Thank you for using Log-Tech, Inc.
(785) 625-3858

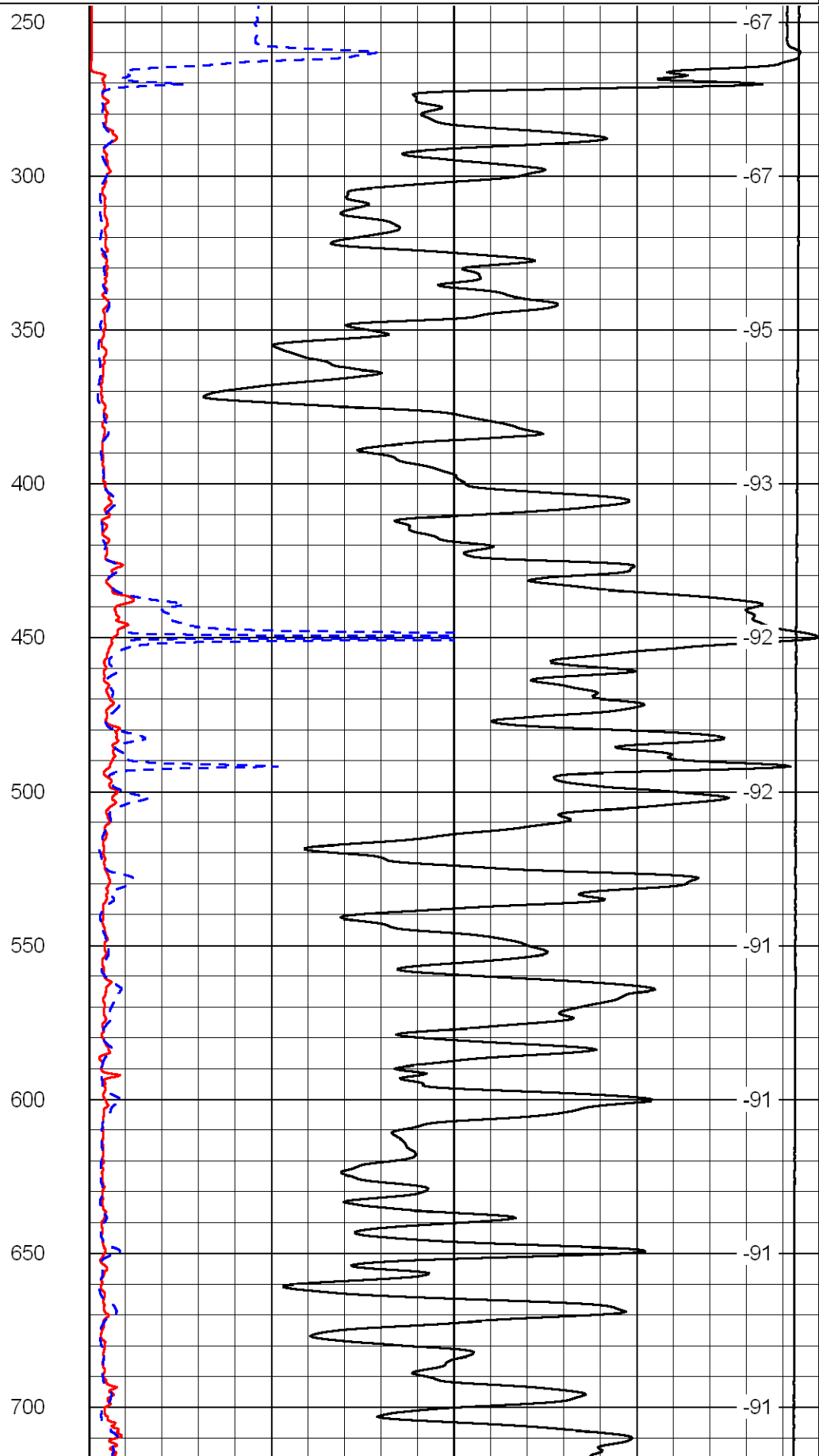
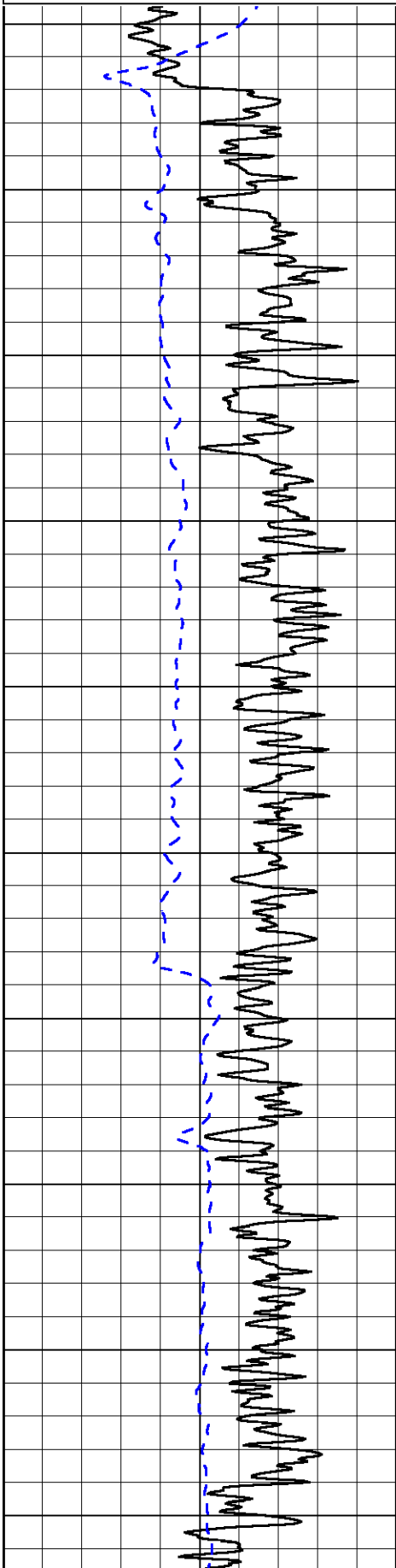
Anthony, 12 West to 120th Ave., 3 1/2 South, West Into

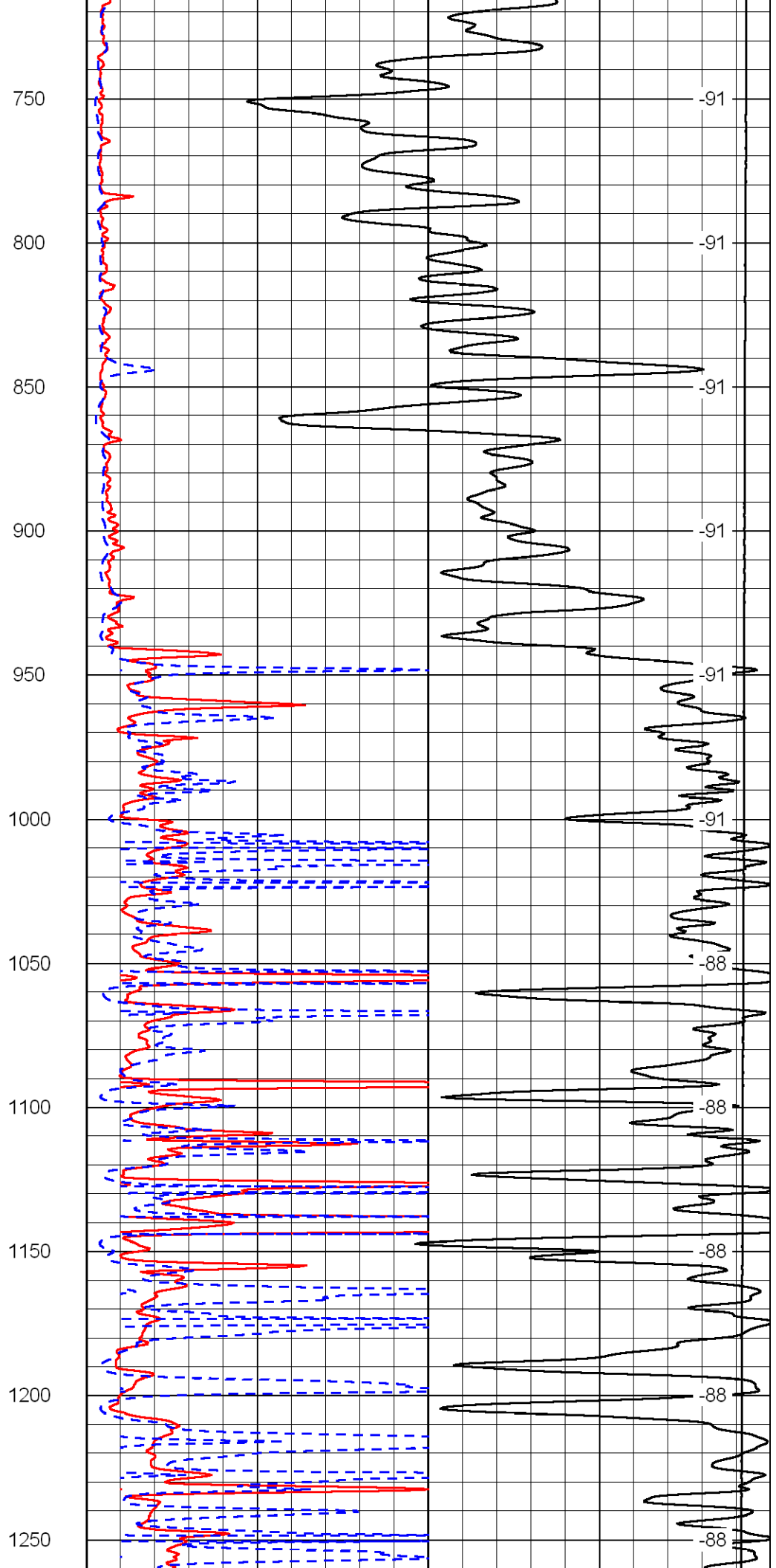
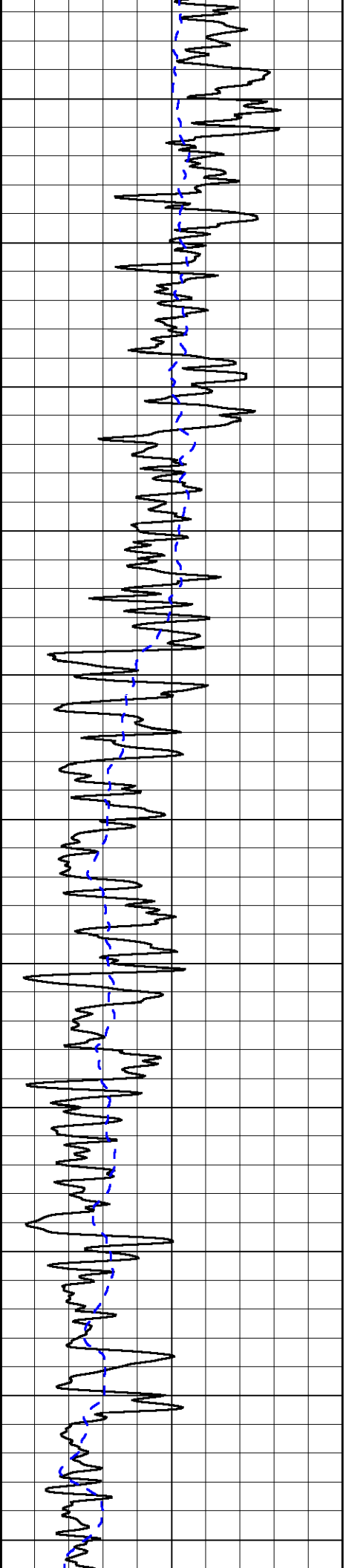
Database File: charlesgriffin_fanning_3hd.db
 Dataset Pathname: dil/cgstck
 Presentation Format: dil2in
 Dataset Creation: Sun Jul 04 00:41:48 2010
 Charted by: Depth in Feet scaled 1:600

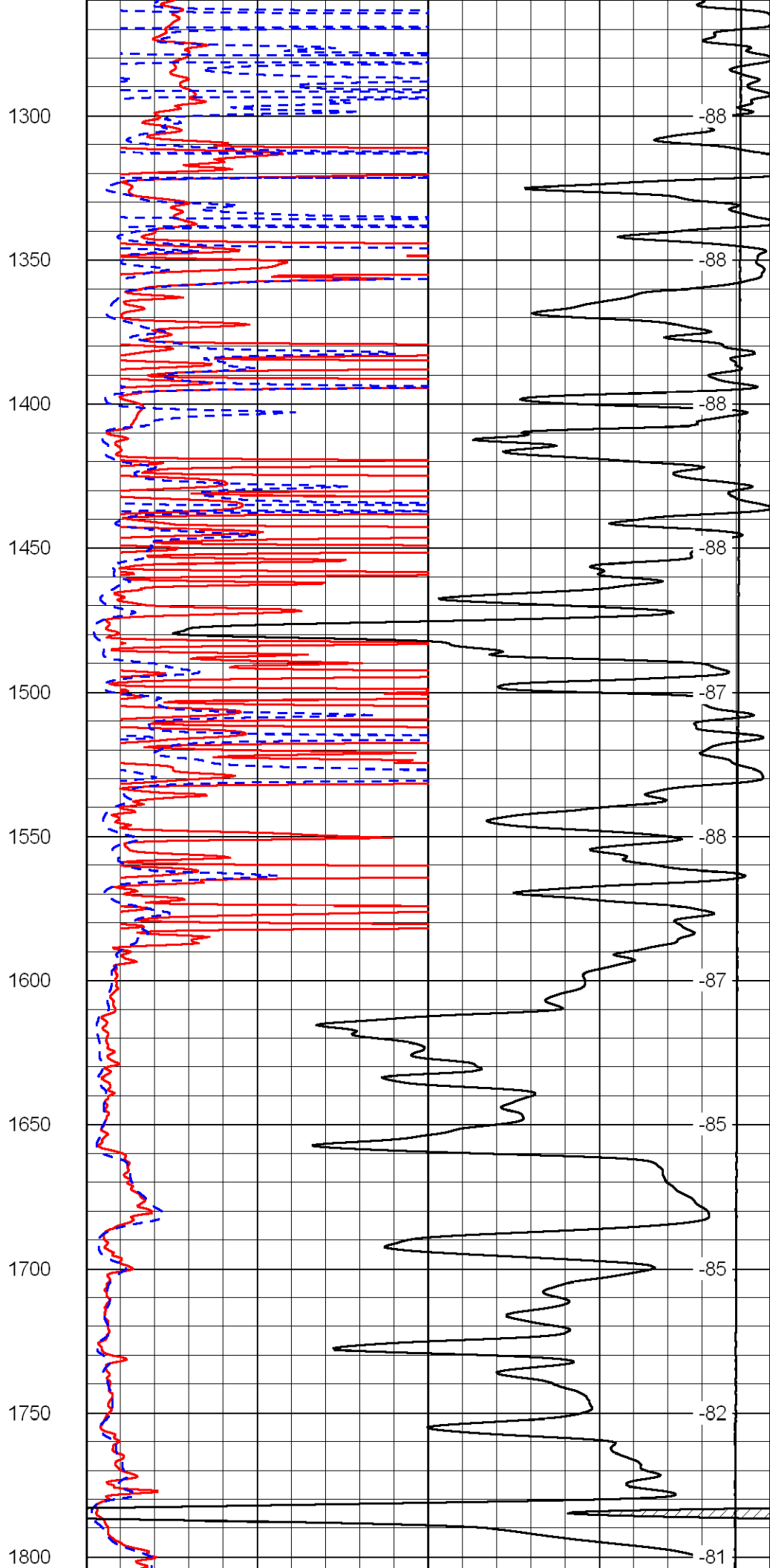
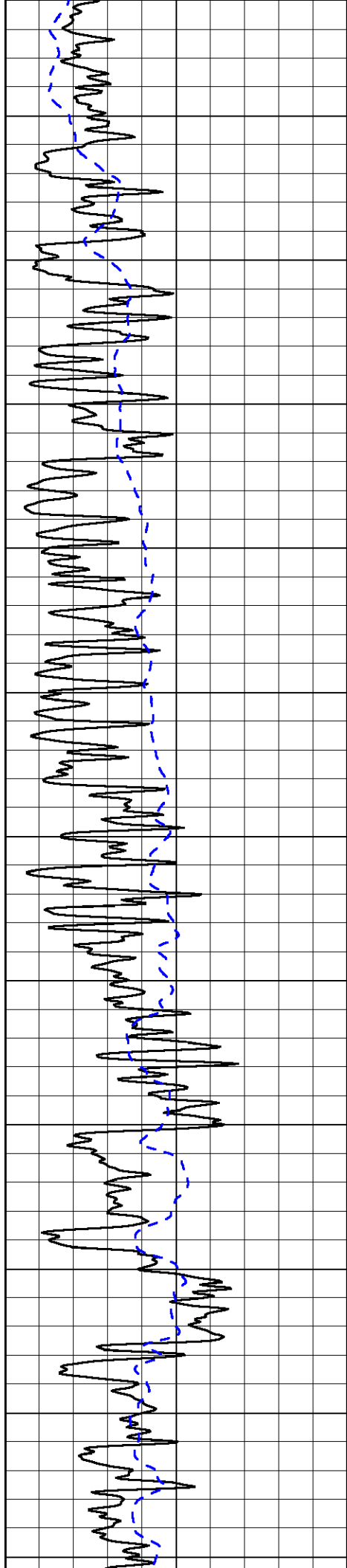
0 Gamma Ray 150
-200 SP 0

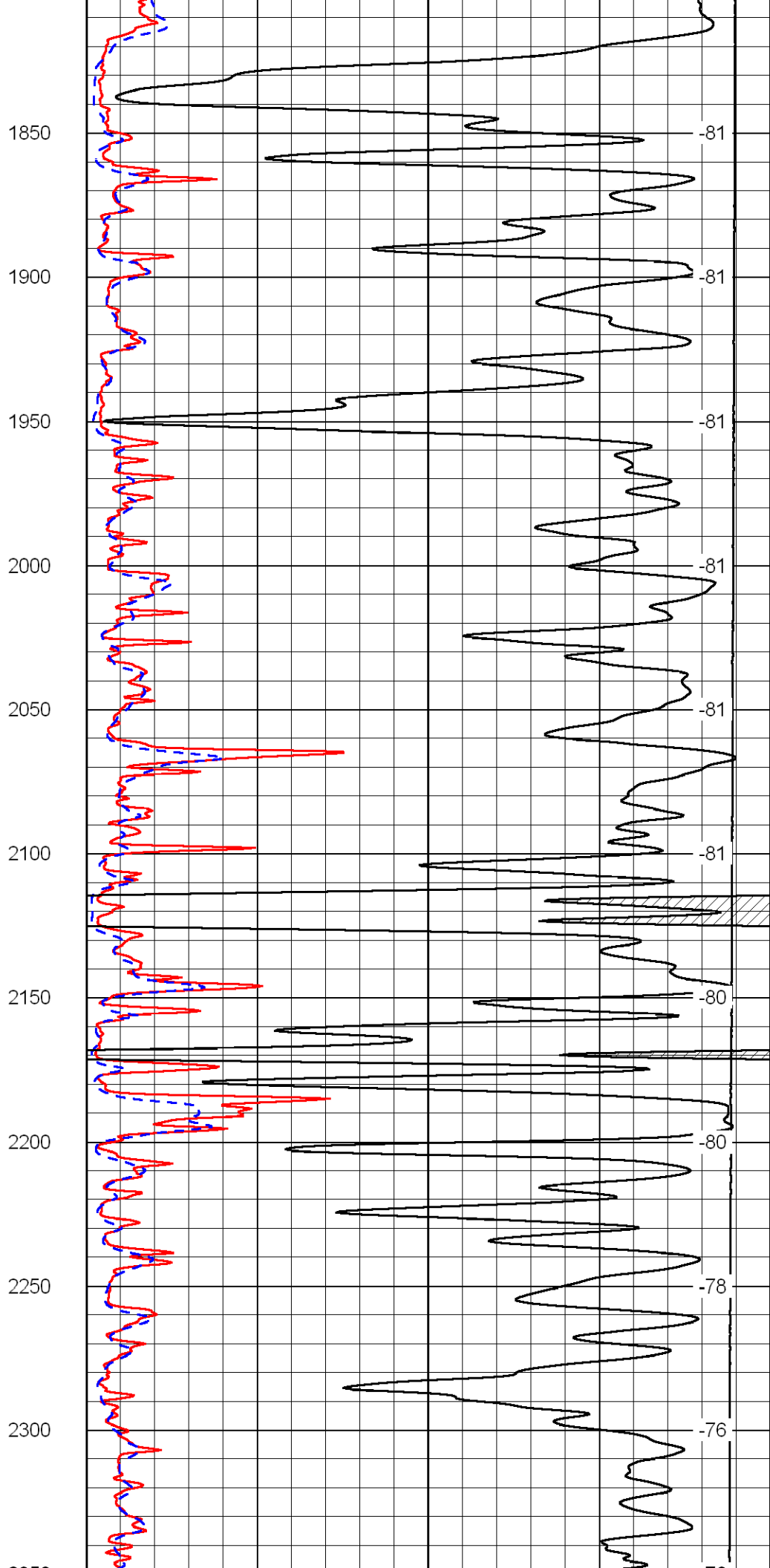
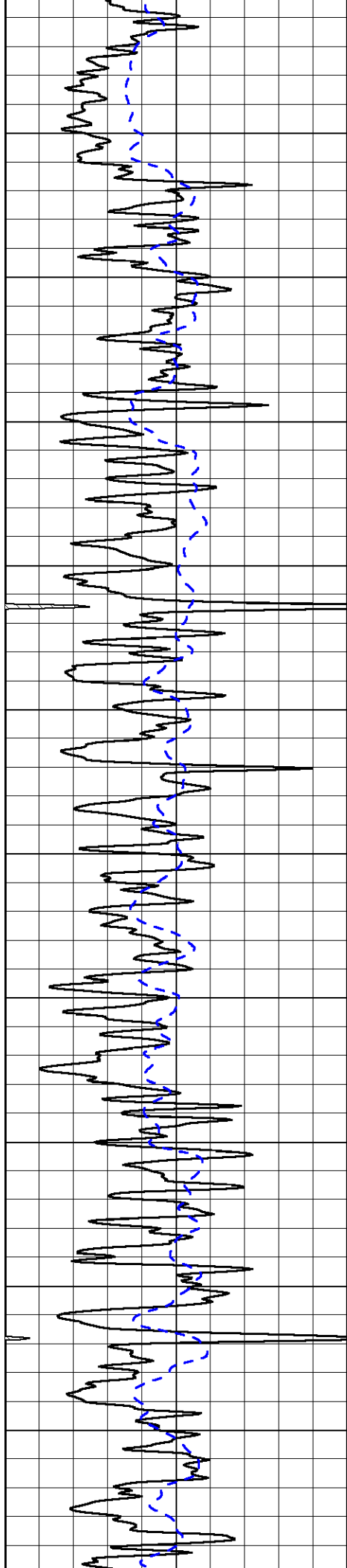
0 Shallow Resistivity 50
0 Deep Resistivity 50
1000 Conductivity 0
15000 Line Tension 0
50 Shallow Resistivity 500
50 Deep Resistivity 500

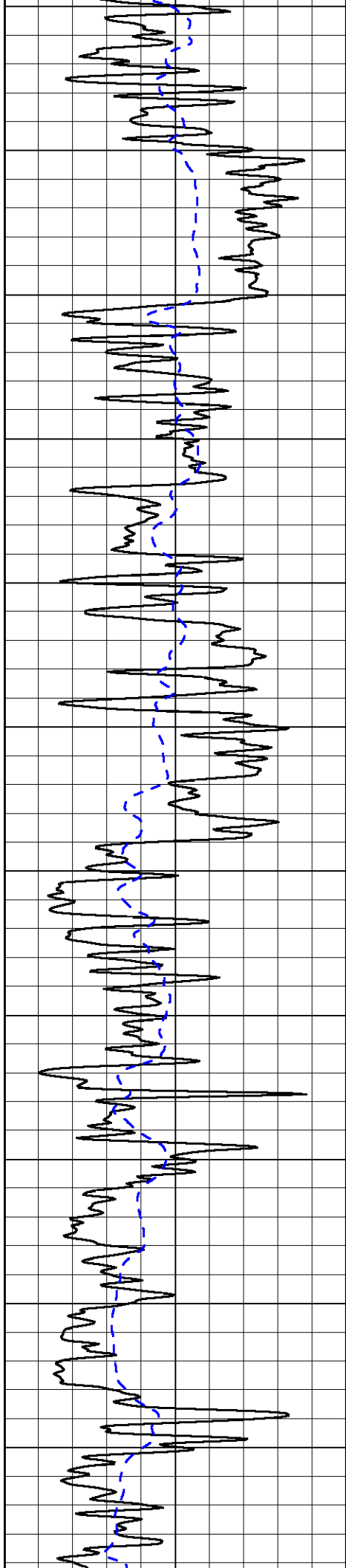
LSPD



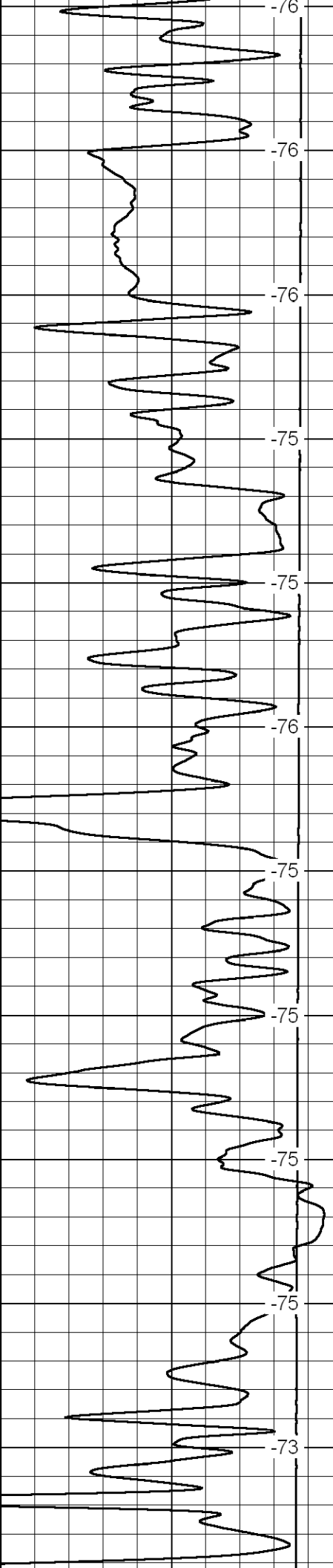




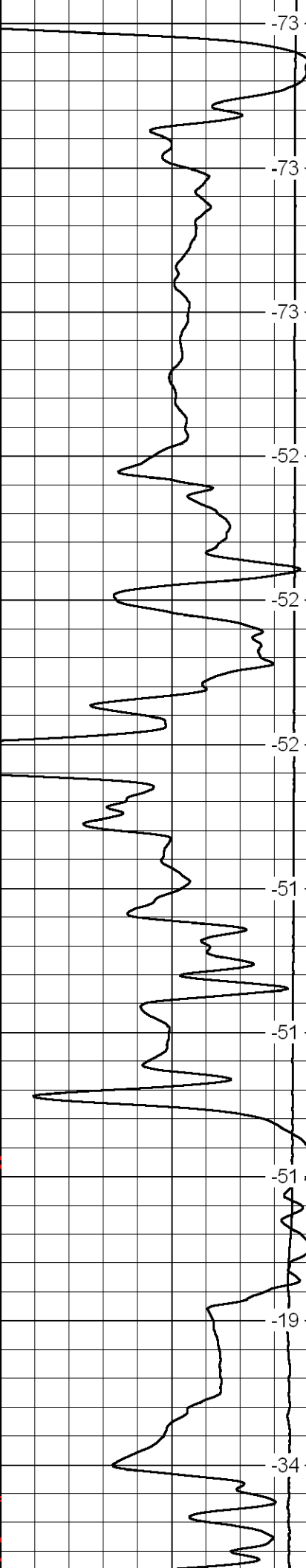
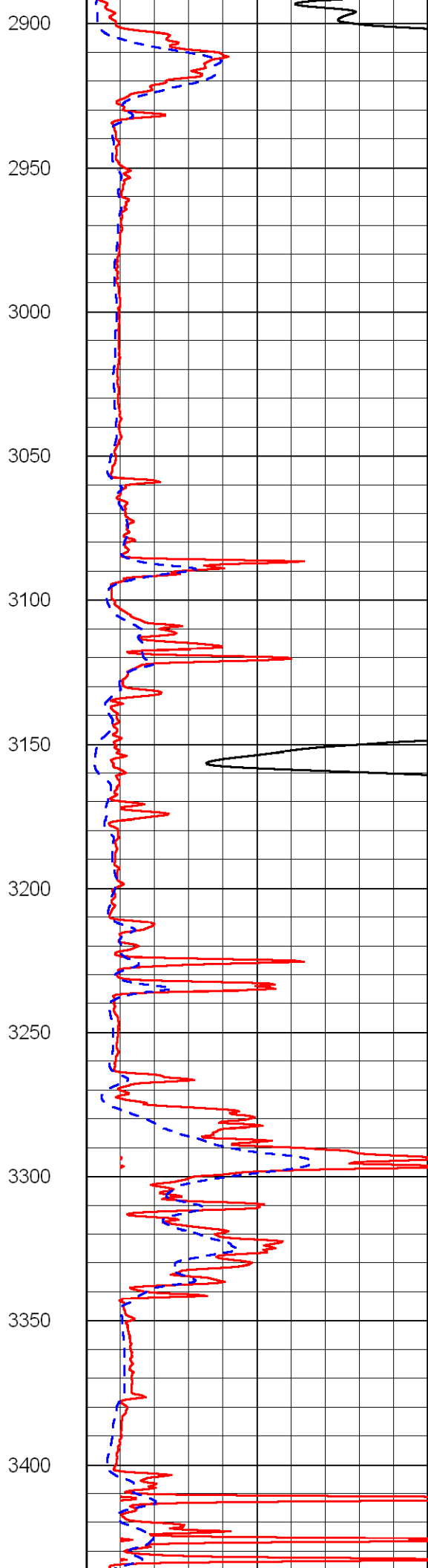
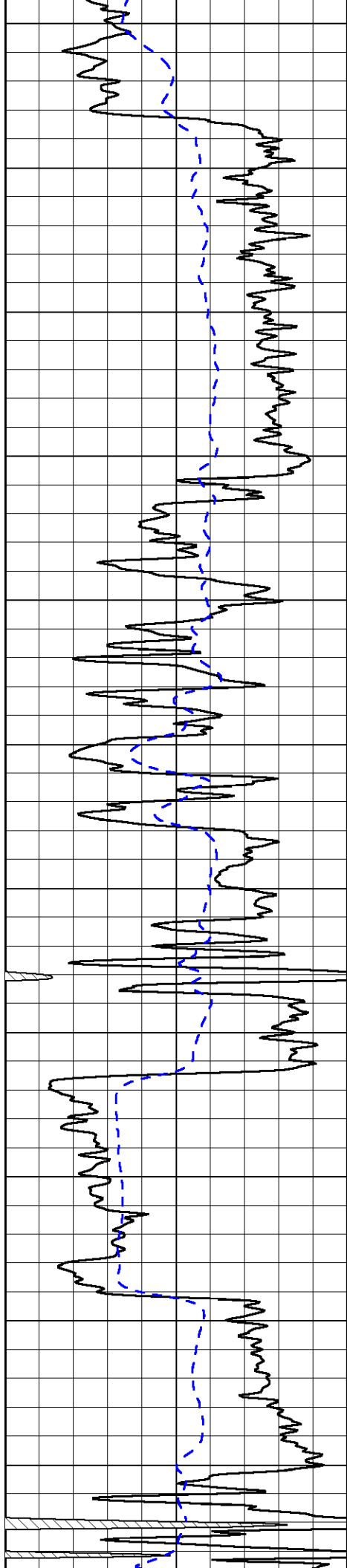


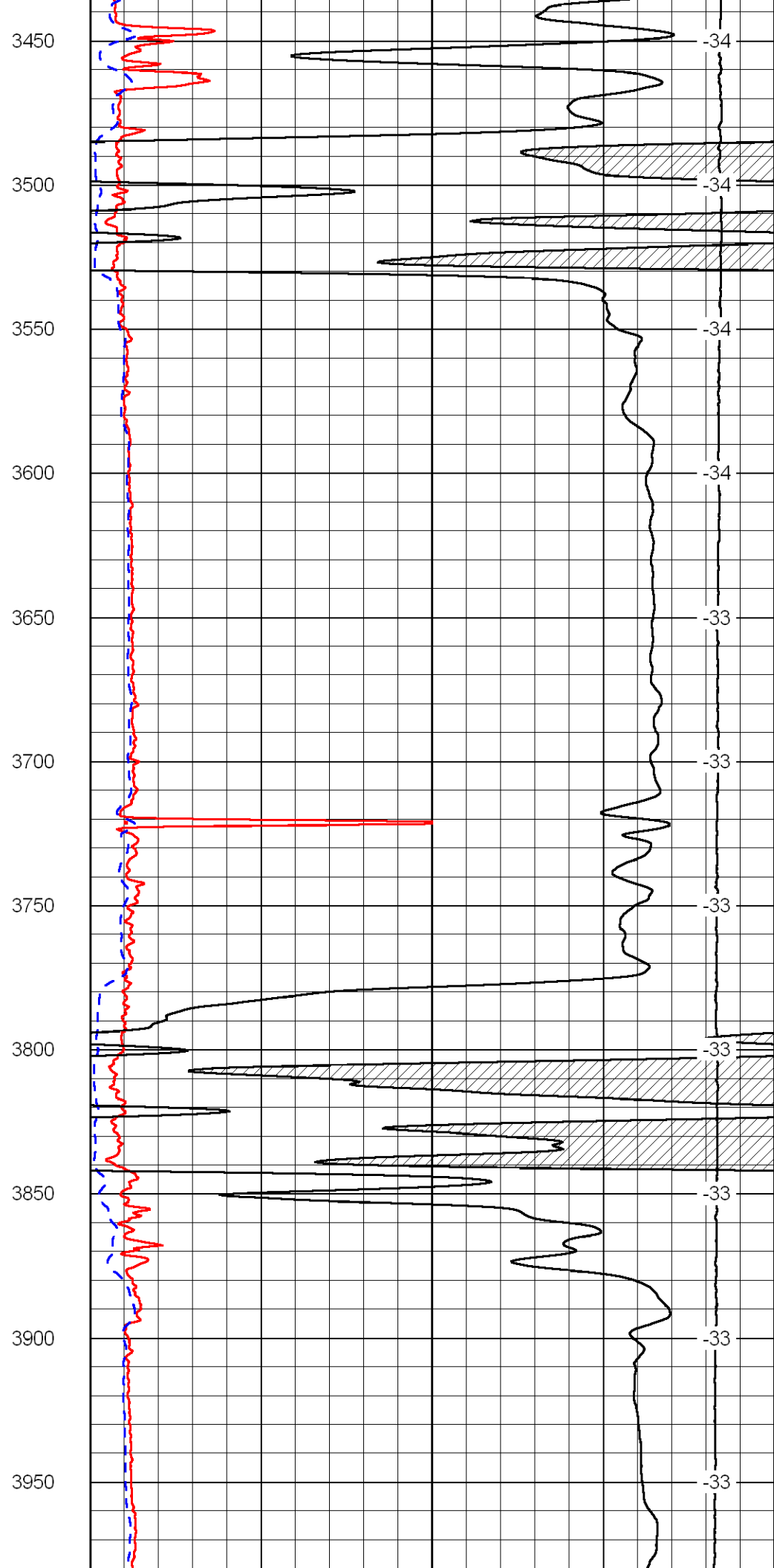
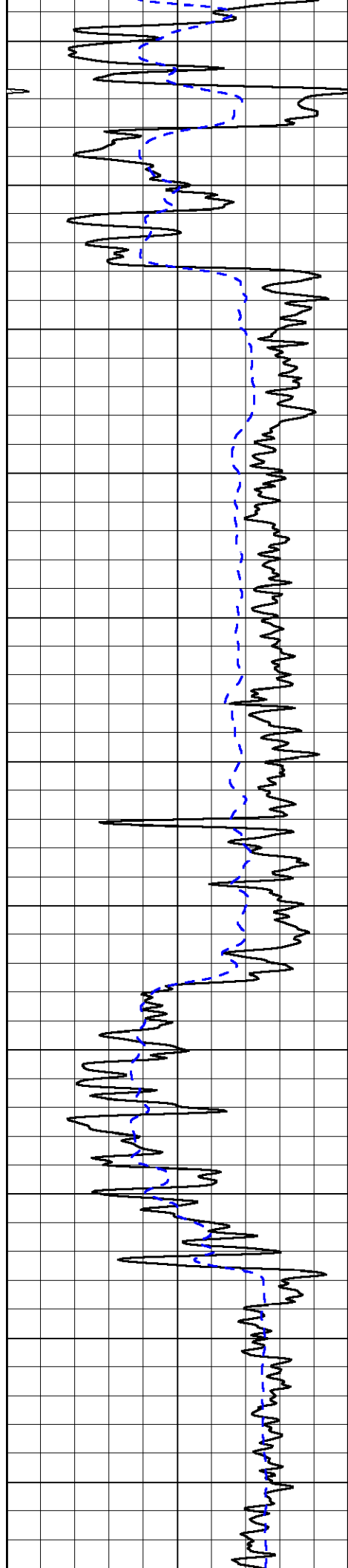


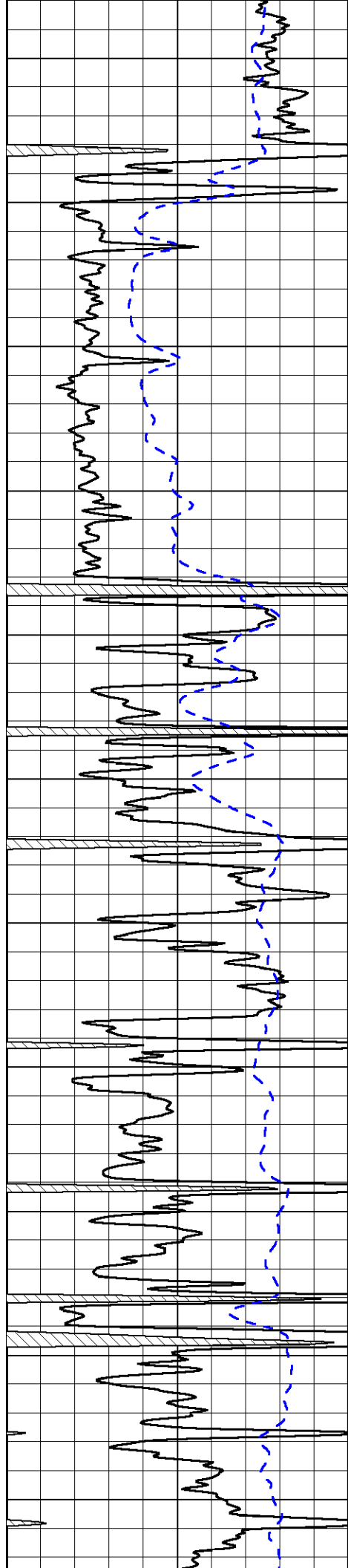
2350
2400
2450
2500
2550
2600
2650
2700
2750
2800
2850



-76
-76
-76
-75
-75
-76
-75
-75
-75
-75
-75
-73







4000

4050

4100

4150

4200

4250

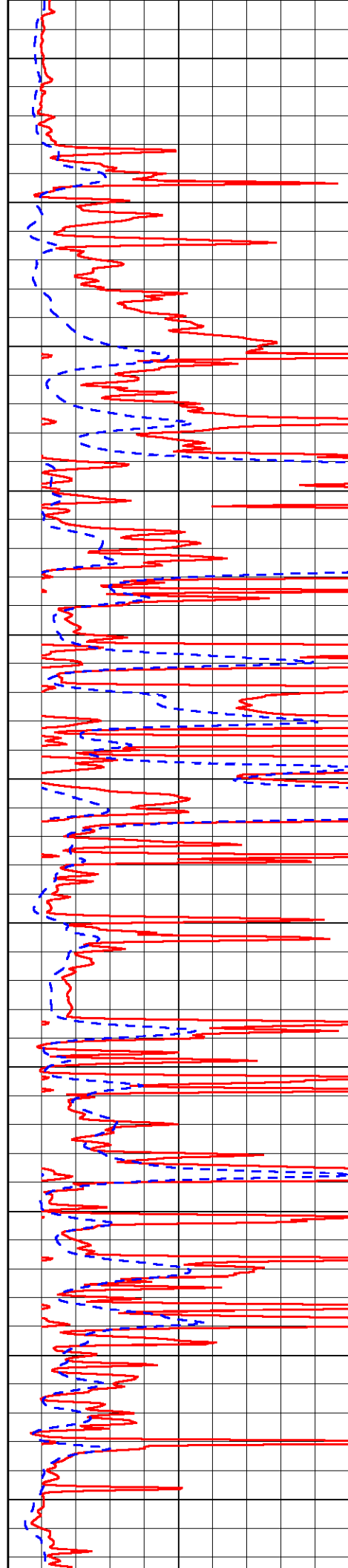
4300

4350

4400

4450

4500



-32

-32

-32

-32

-32

-31

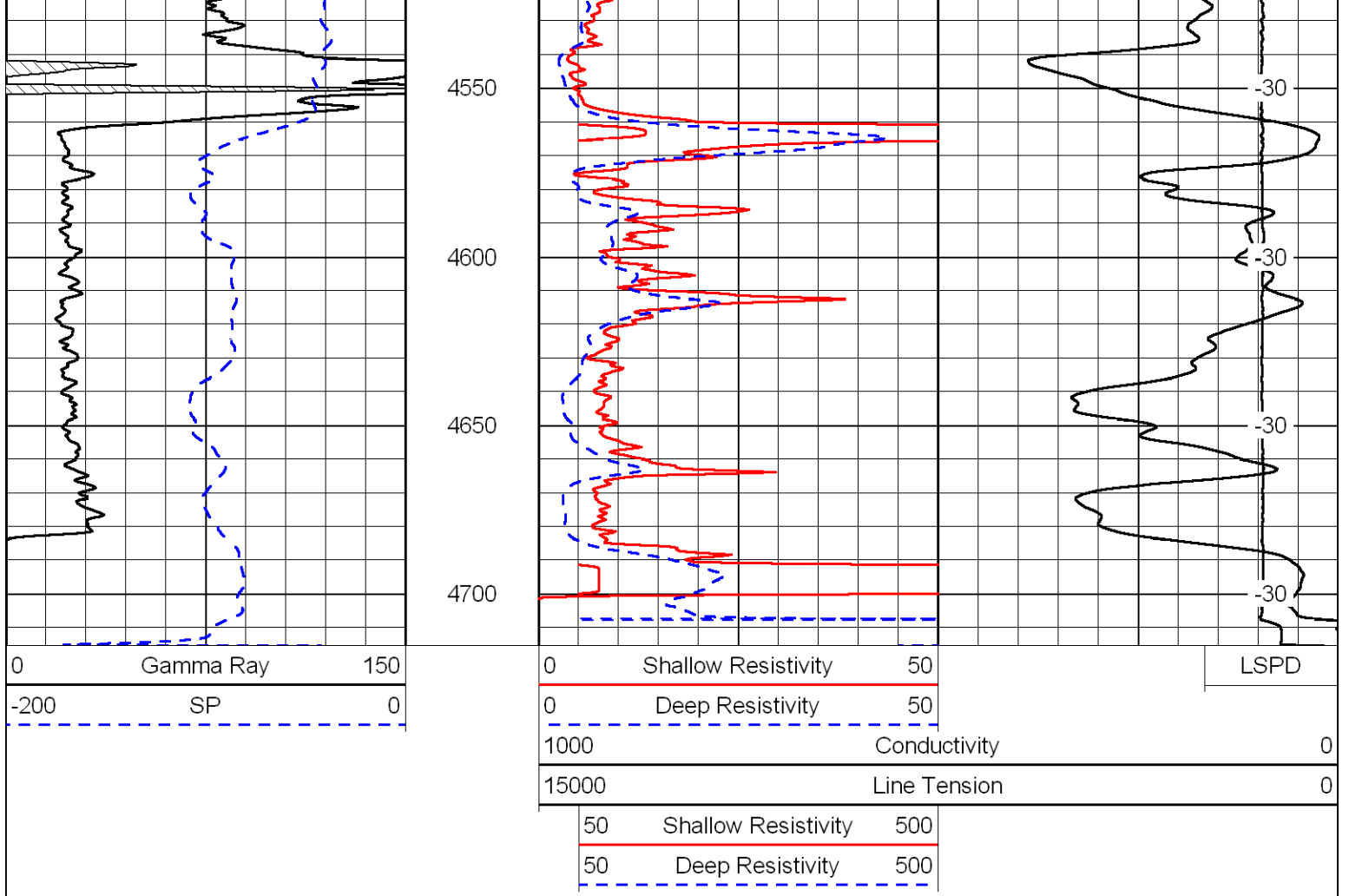
-31

-31

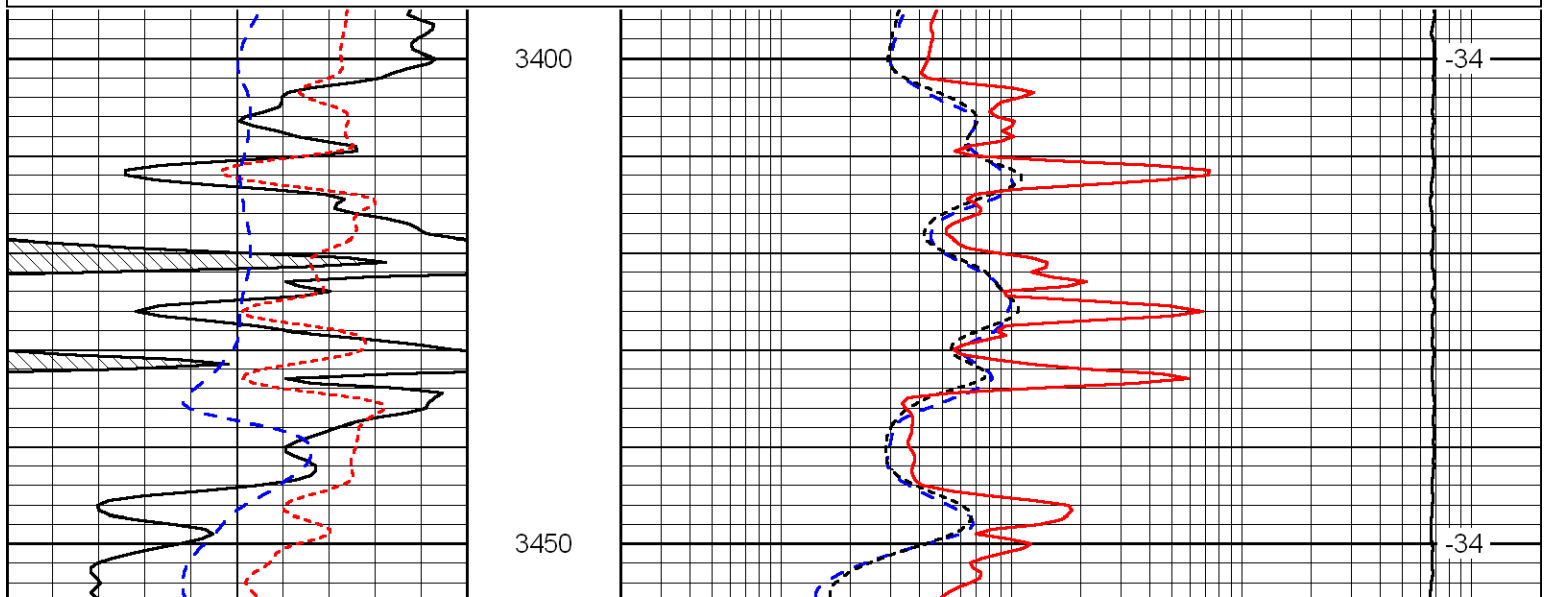
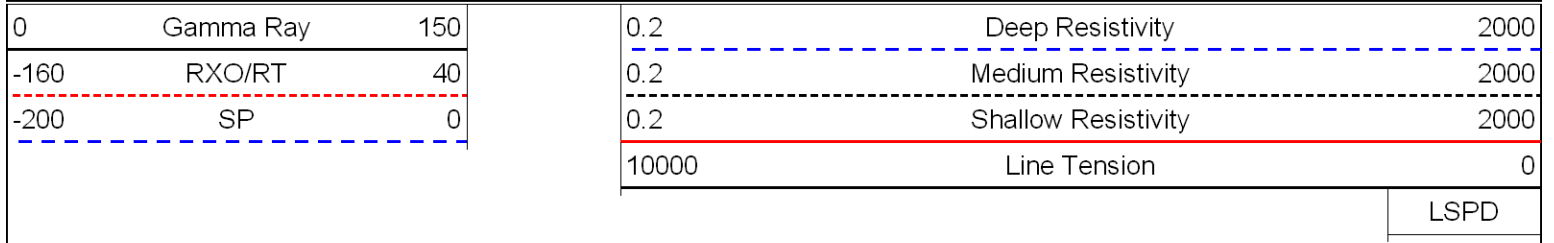
-31

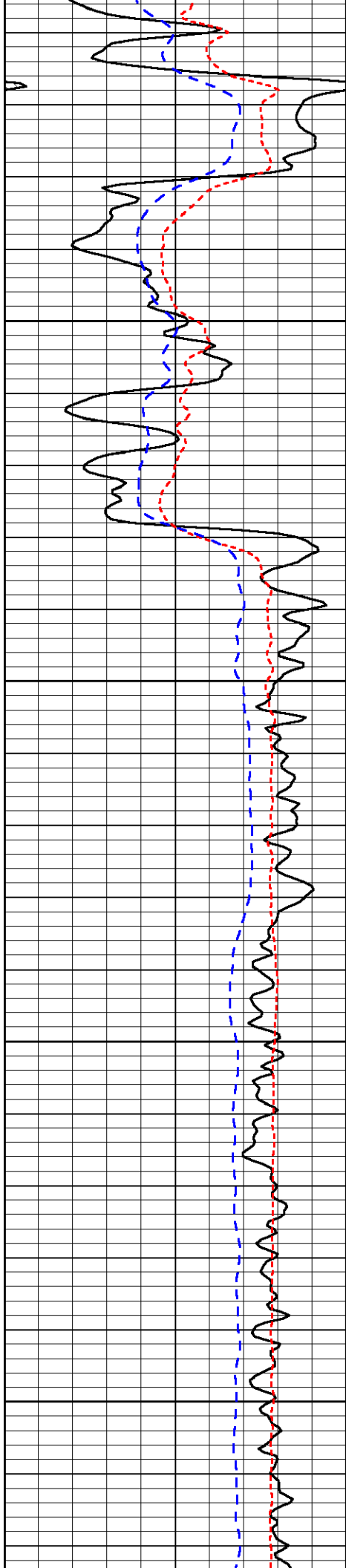
-31

-30



Database File: charlesgriffin_fanning_3hd.db
 Dataset Pathname: dil/cgstck
 Presentation Format: dil
 Dataset Creation: Sun Jul 04 00:41:48 2010
 Charted by: Depth in Feet scaled 1:240



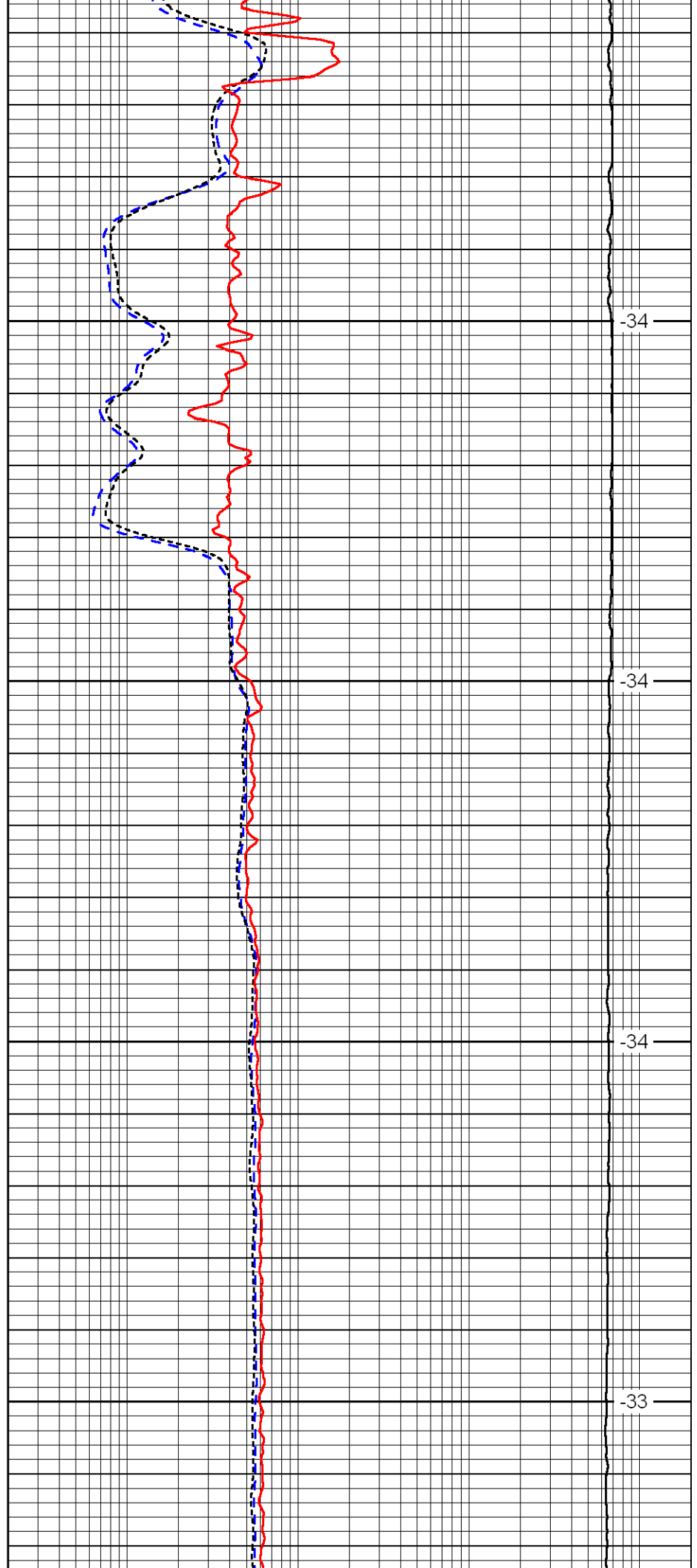


3500

3550

3600

3650

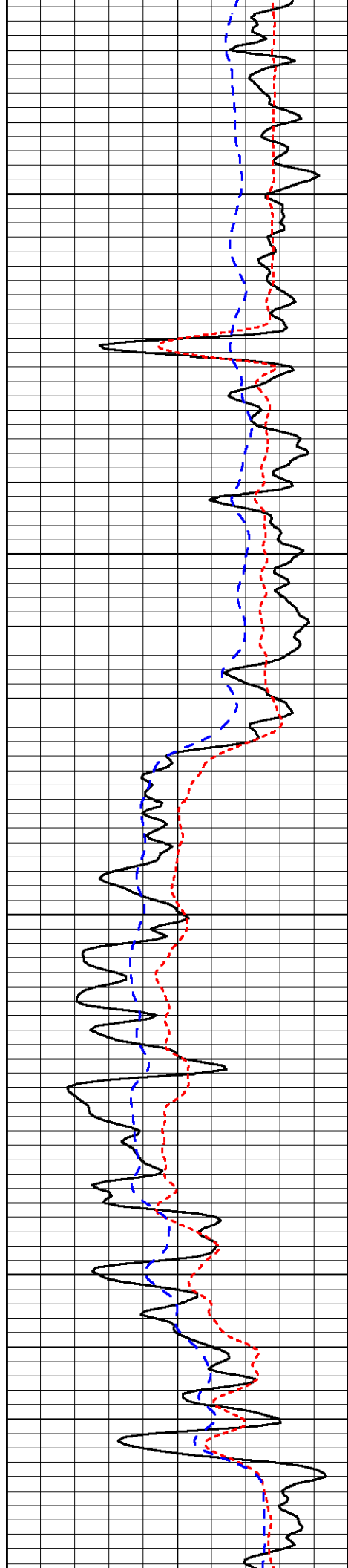


-34

-34

-34

-33

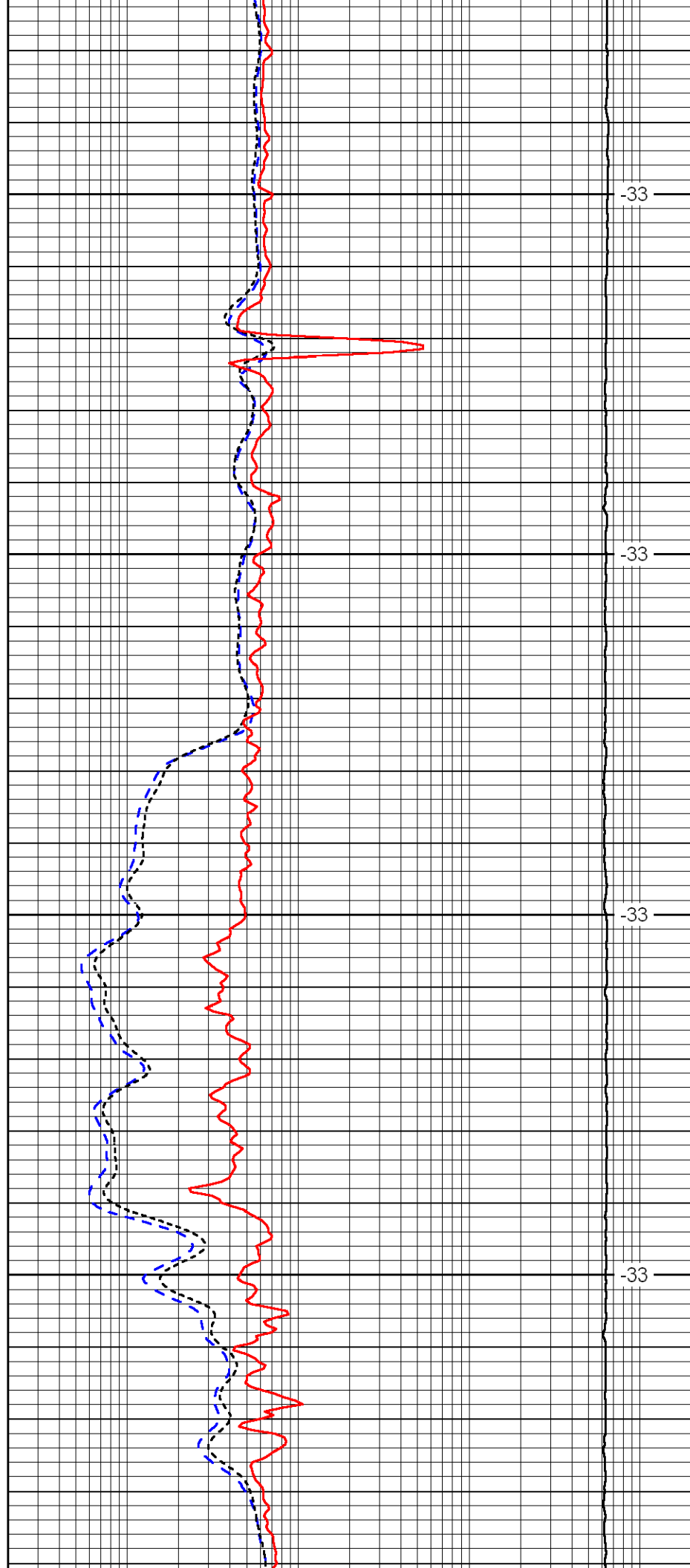


3700

3750

3800

3850

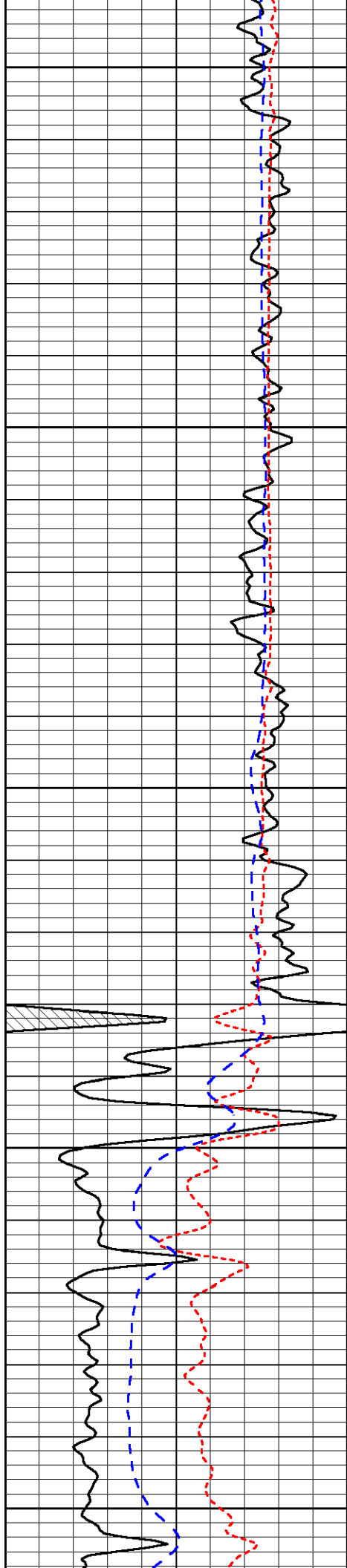


-33

-33

-33

-33



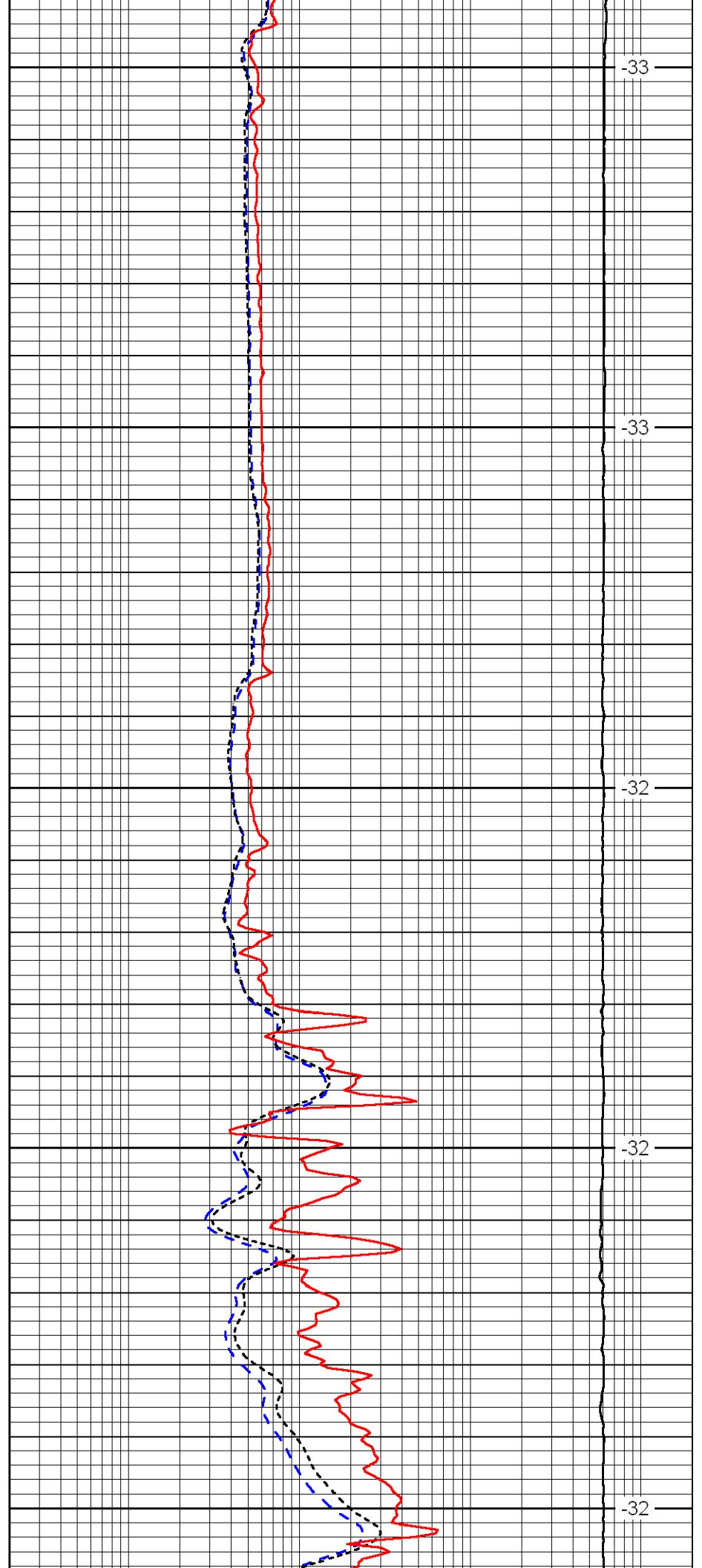
3900

3950

4000

4050

4100



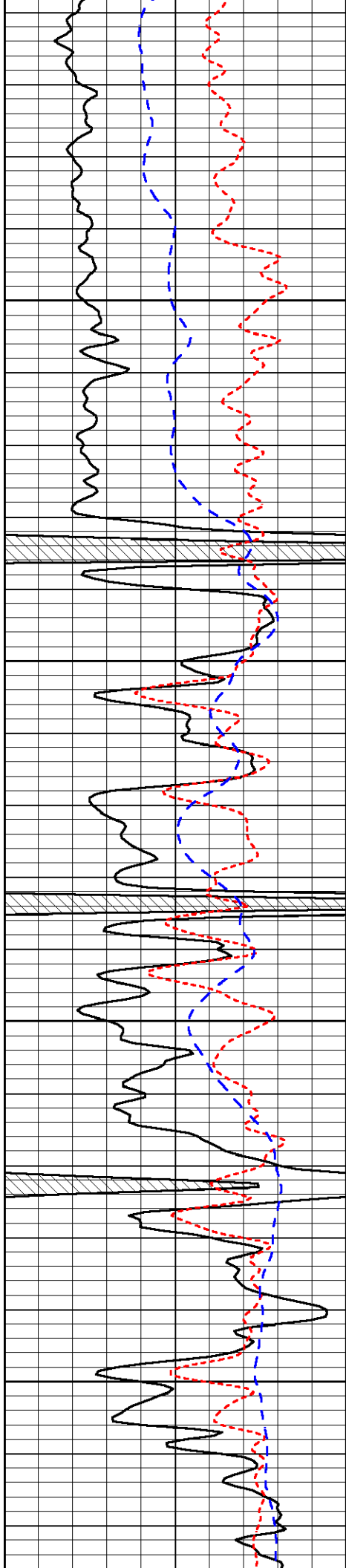
-33

-33

-32

-32

-32

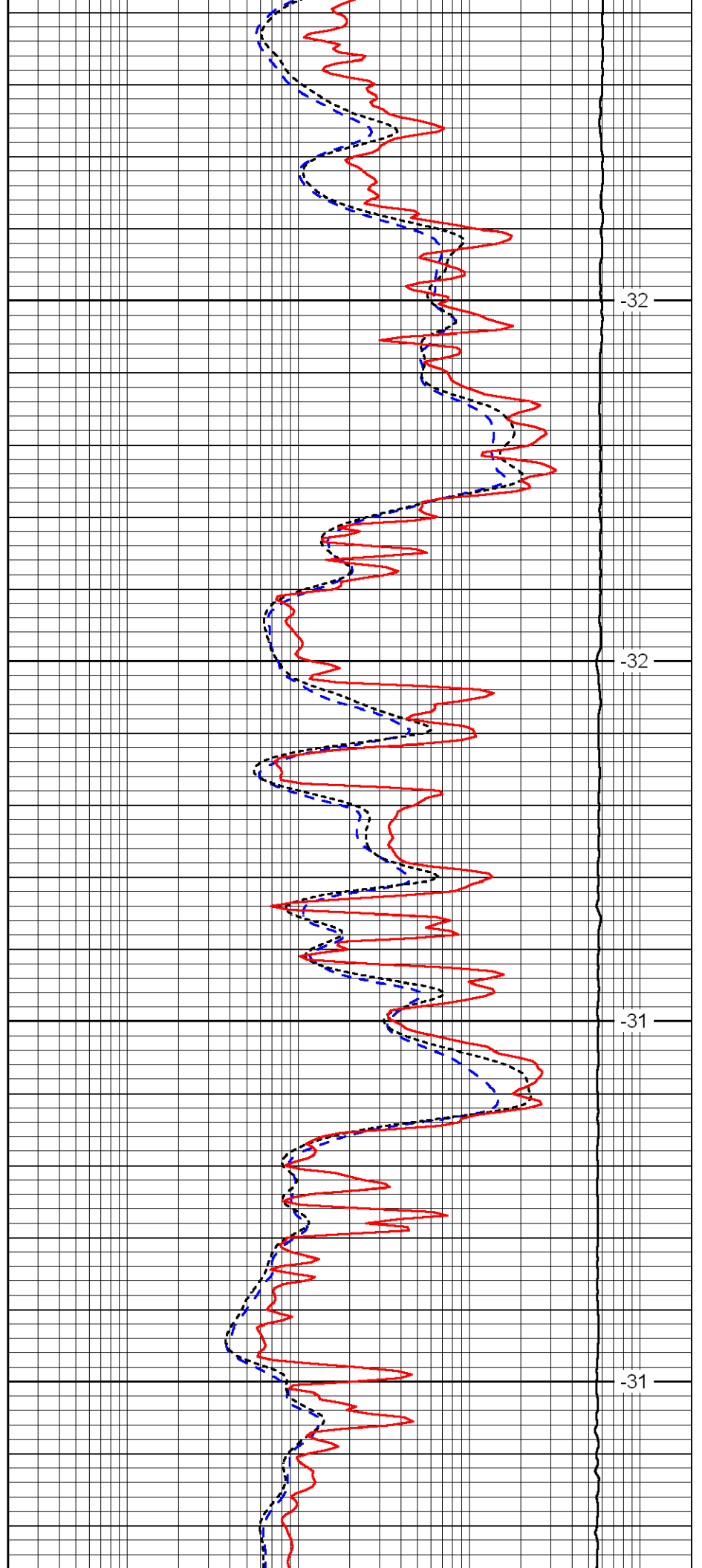


4150

4200

4250

4300

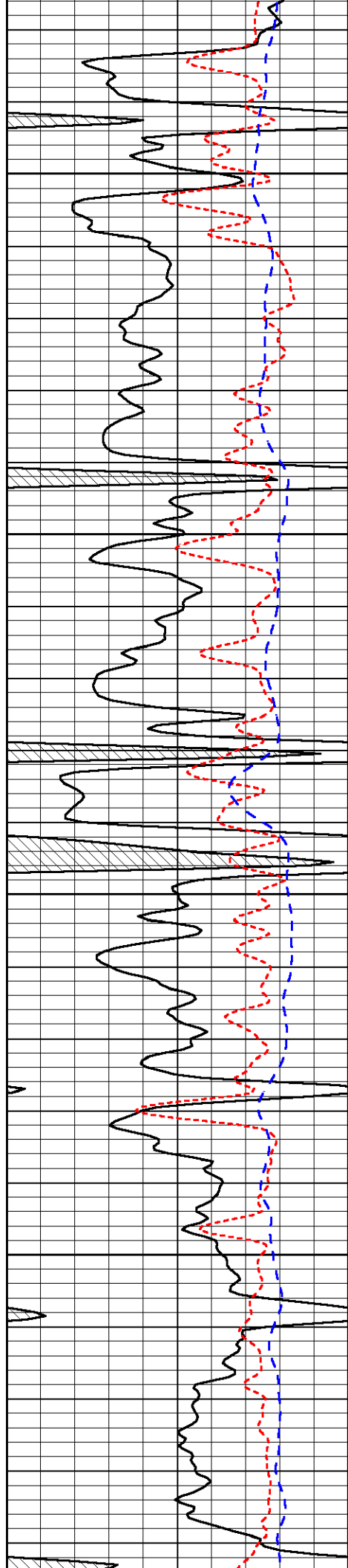


-32

-32

-31

-31

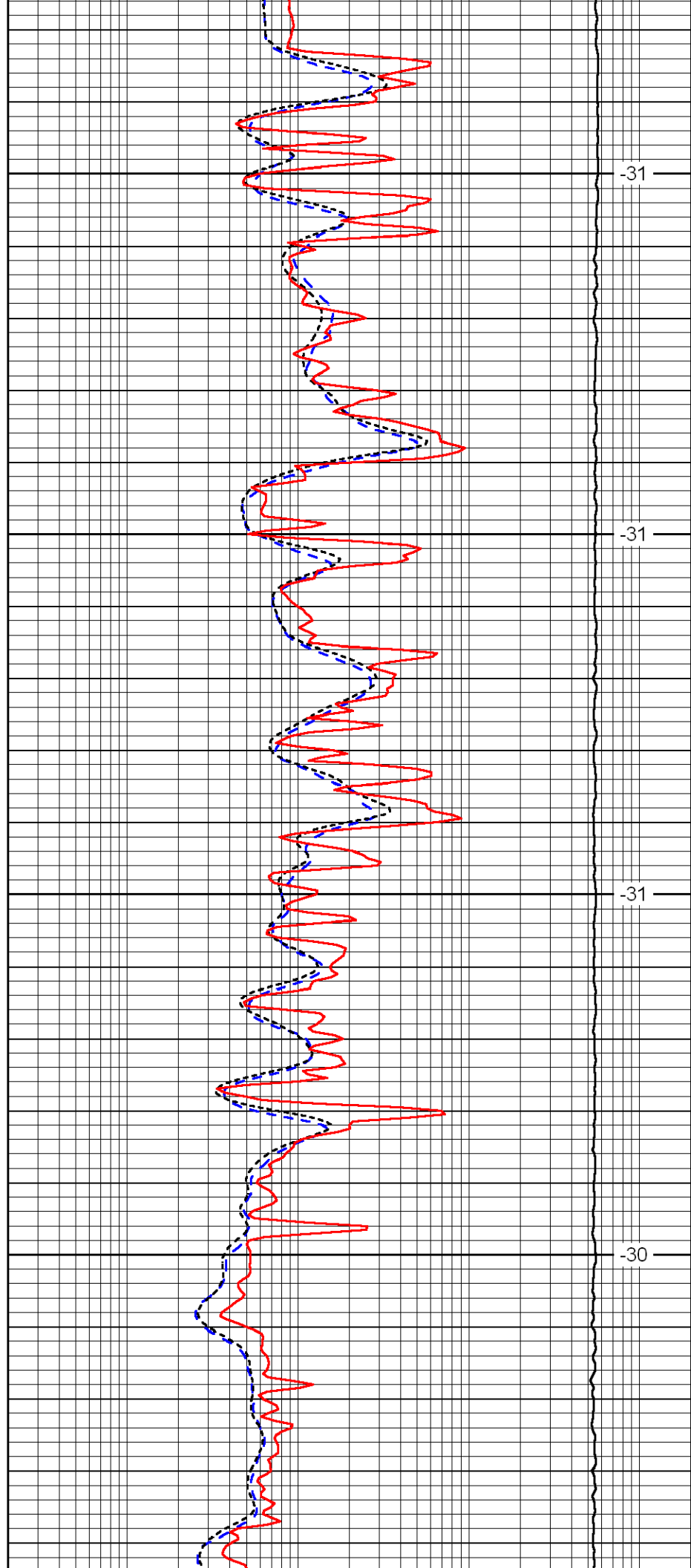


4350

4400

4450

4500

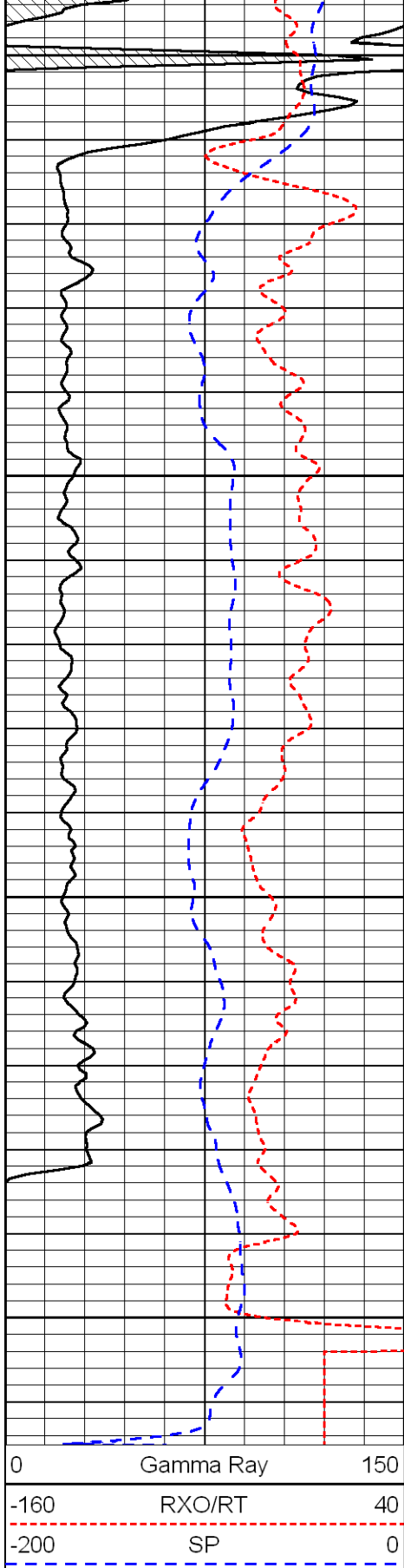


-31

-31

-31

-30

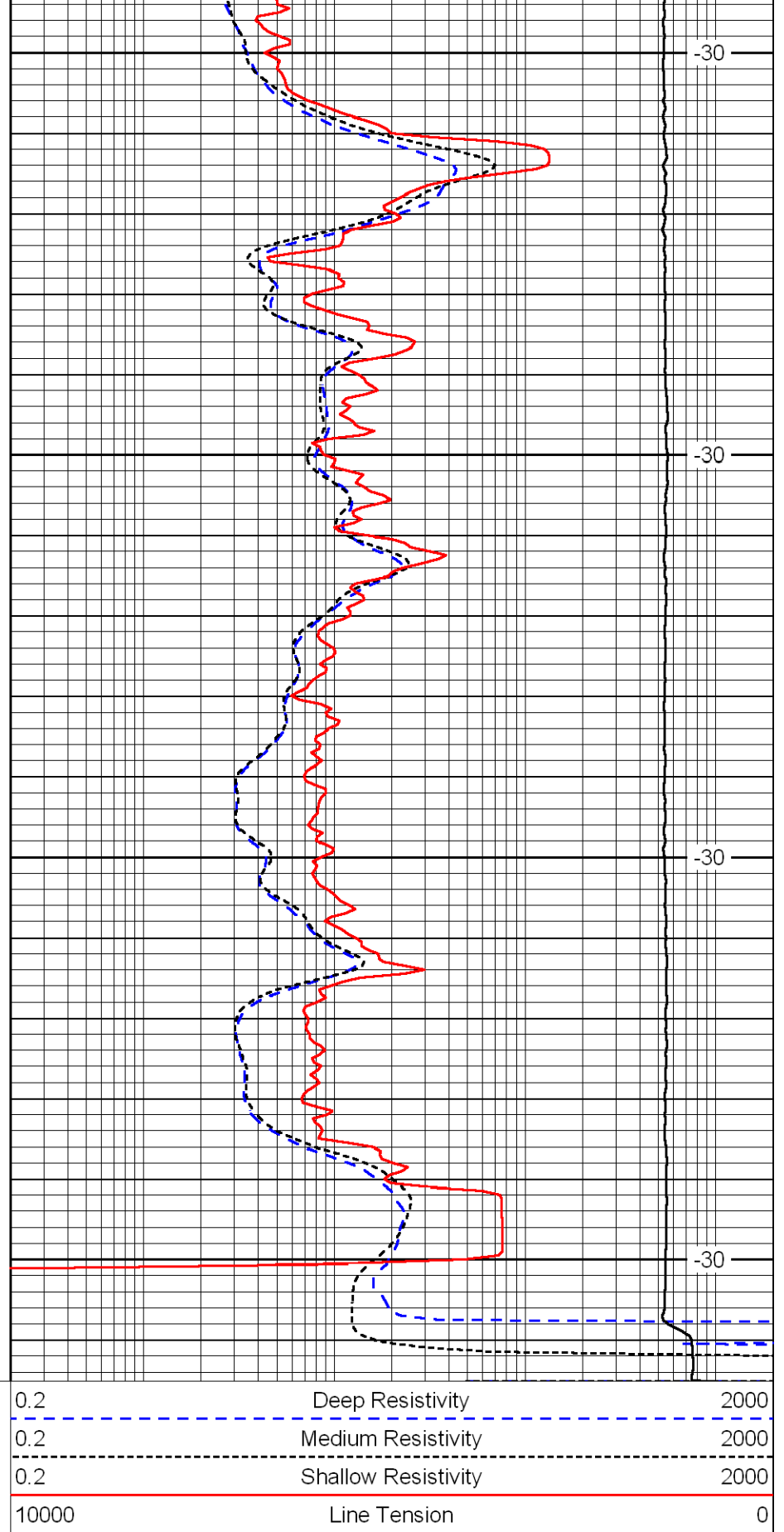


4550

4600

4650

4700



-30

-30

-30

-30

LSPD