



Microresistivity Log

DIGITAL LOG (785) 625-3858

API No.	15-051-26,077-00-00		
Company	Meridian Energy Inc.		
Well	Staab No. 1		
Field			
County	Elifs	State	Kansas
Location	SW SW 510' FSL & 920' FWL		Other Services CNL/CDL DIL
Sec:	35	Twp: 13 S	Rge: 19 W
Permanent Datum	Ground Level	Elevation	2178
Log Measured From	Kelly Bushing	6	Ft. Above Perm. Datum
Drilling Measured From	Kelly Bushing		
		K.B.	2184
		D.F.	2178
		G.L.	2178

Date	2/23/2011	
Run Number	Two	
Depth Driller	3895	
Depth Logger	3898	
Bottom Logged Interval	3897	
Top Log Interval	2800	
Casing Driller	8.625 @ 238	
Casing Logger	233	
Bit Size	7.875	
Type Fluid in Hole	Chemical	
Salinity, ppm CL	9000	
Density / Viscosity	9.1	62
pH / Fluid Loss	9.5	8.8
Source of Sample	Flowline	
Rm @ Meas. Temp	.66	@ 56
Rmf @ Meas. Temp	.50	@ 56
Rmc @ Meas. Temp	.89	@ 56
Source of Rmf / Rmc	Charts	
Rm @ BHT	.32	@ 115
Operating Rig Time	4 Hours	
Max Rec. Temp. F	115	
Equipment Number	10	
Location	Hays	
Recorded By	Jim Schuler	
Witnessed By	Neal LaFon	

<<< Fold Here >>>

All interpretations are opinions based on inferences from electrical or other measurements and we cannot and do not guarantee the accuracy or correctness of any interpretation, and we shall not, except in the case of gross or willful negligence on our part, be liable or responsible for any loss, costs, damages, or expenses incurred or sustained by anyone resulting from any interpretation made by any of our officers, agents or employees. These interpretations are also subject to our general terms and conditions set out in our current Price Schedule.

Comments

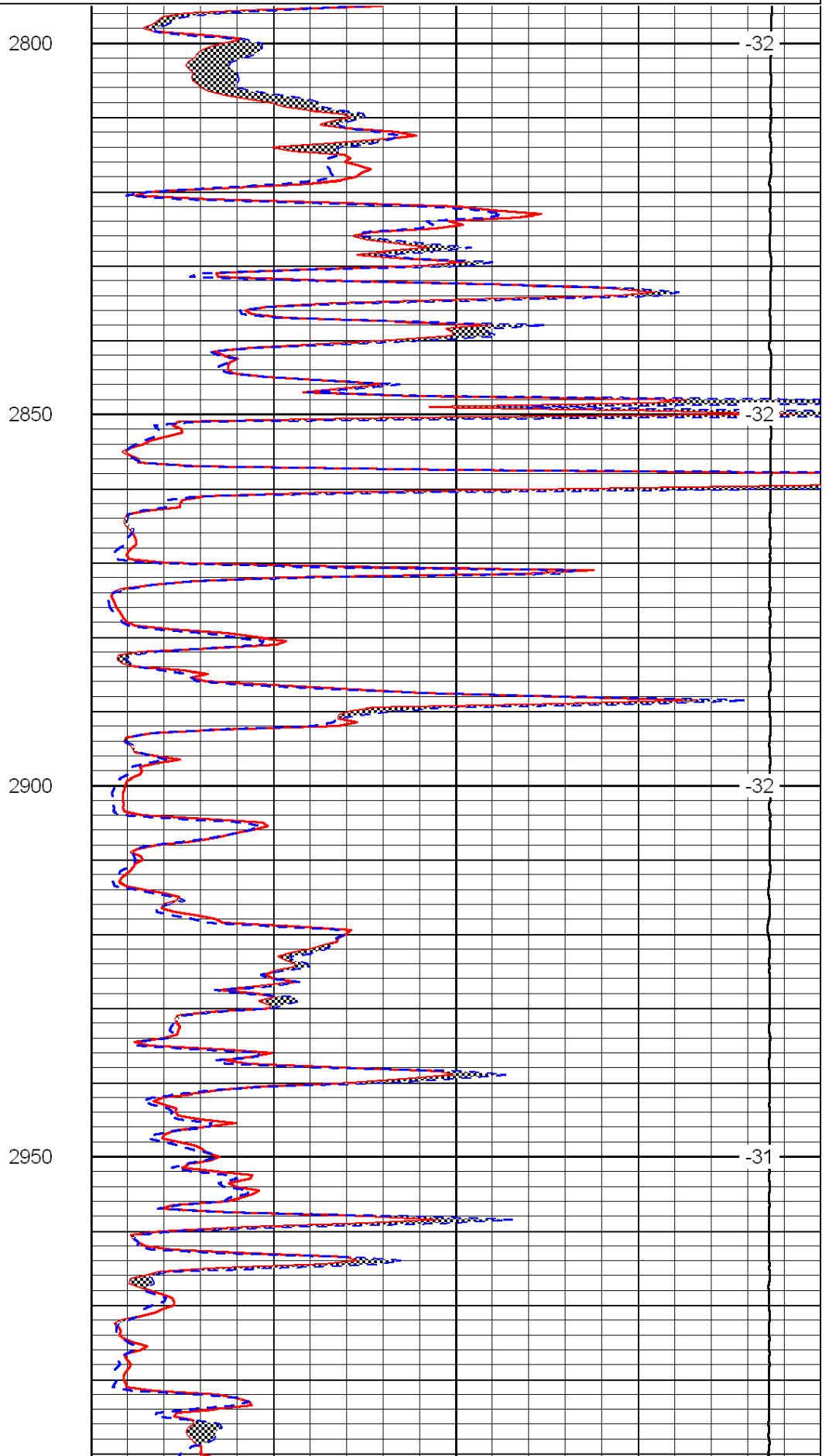
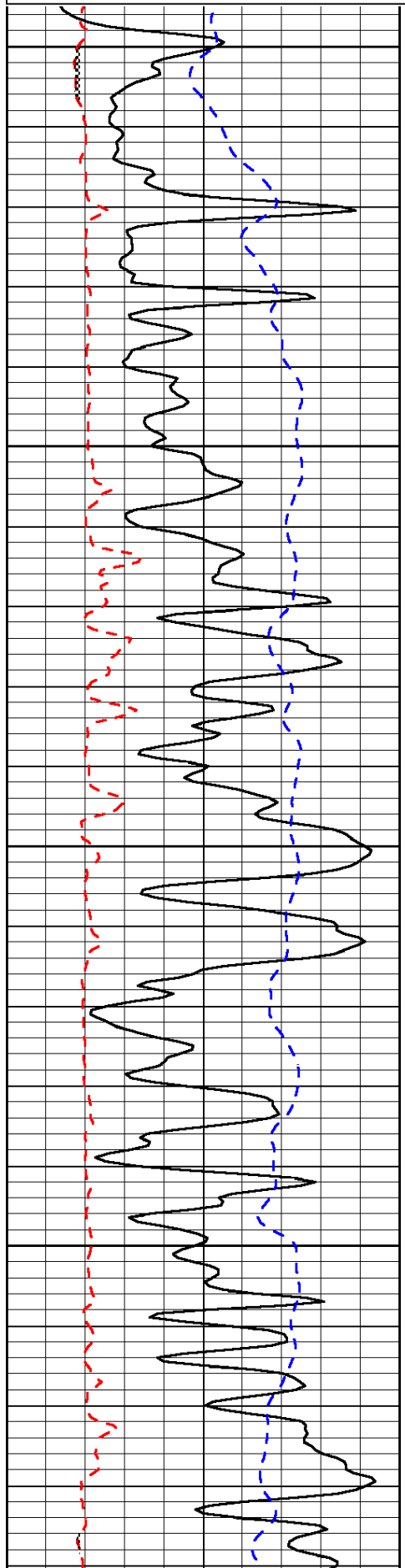
Thank you for using Log-Tech, Inc.
(785) 625-3858

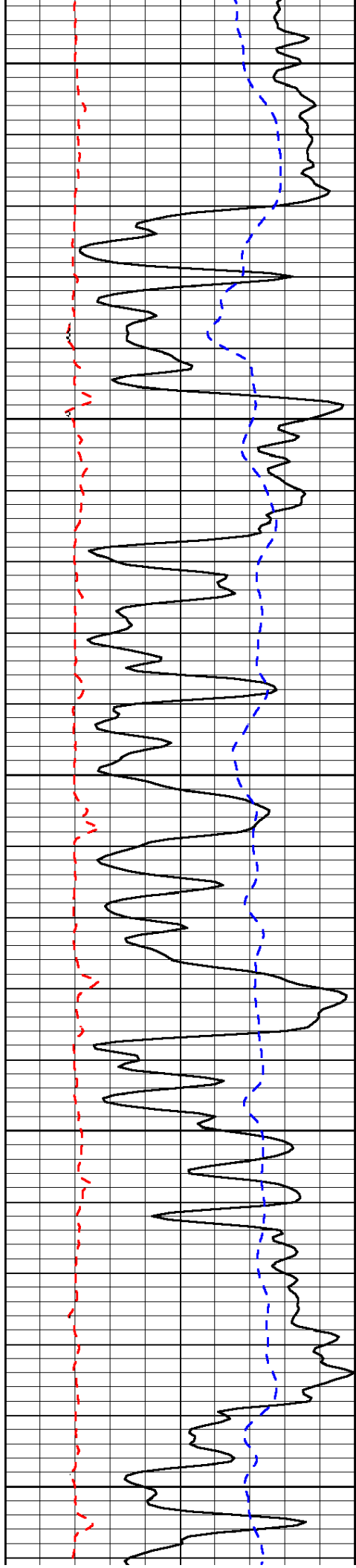
Hays, Kansas, 3 Miles West on Golf Course Road to 200 Road,
1 North, East Into

0	Gamma Ray	150
6	Micro Log Caliper (GAPI)	16
-200	SP (mV)	0

0	Micro Inverse 1 X 1	40
0	Micro Normal 2"	40
15000	Line Weight	0

LSPD





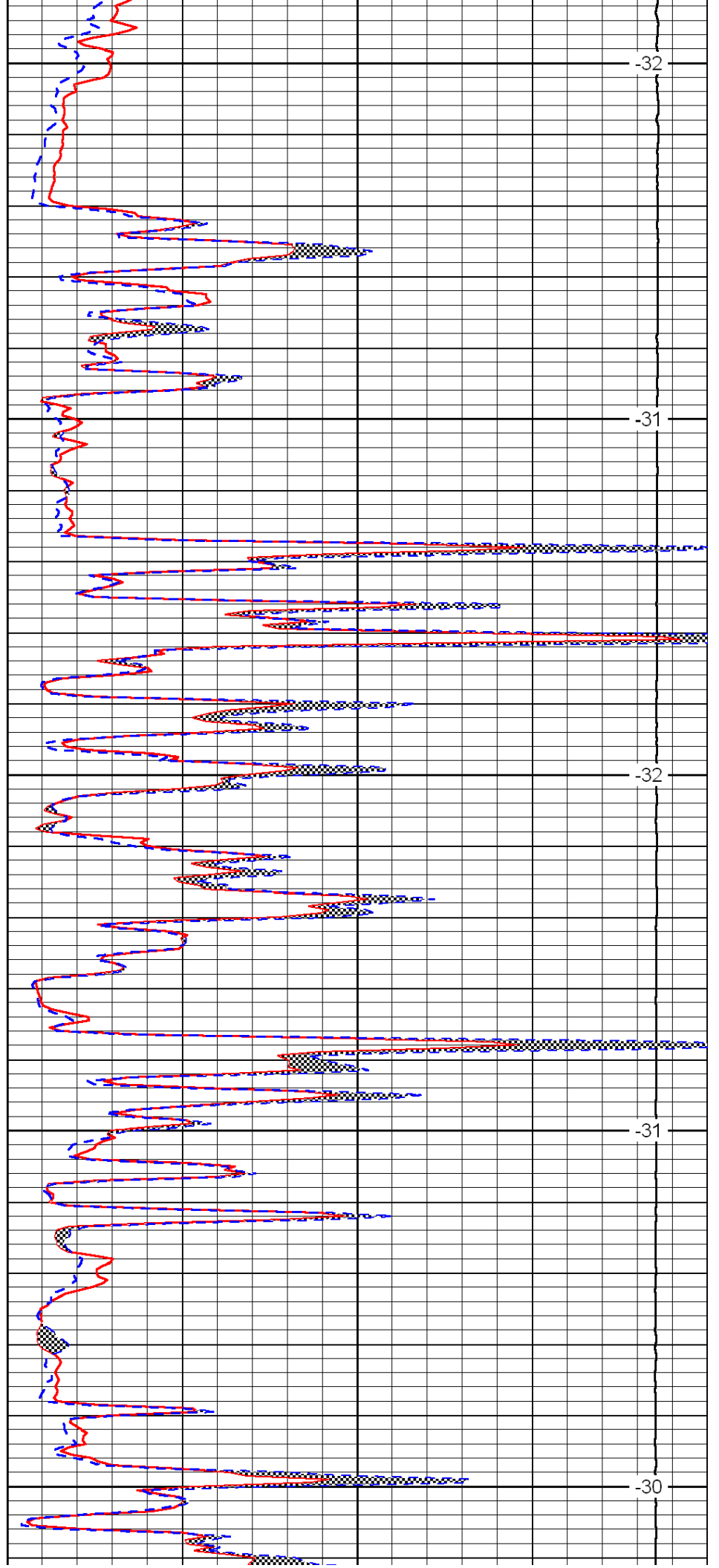
3000

3050

3100

3150

3200



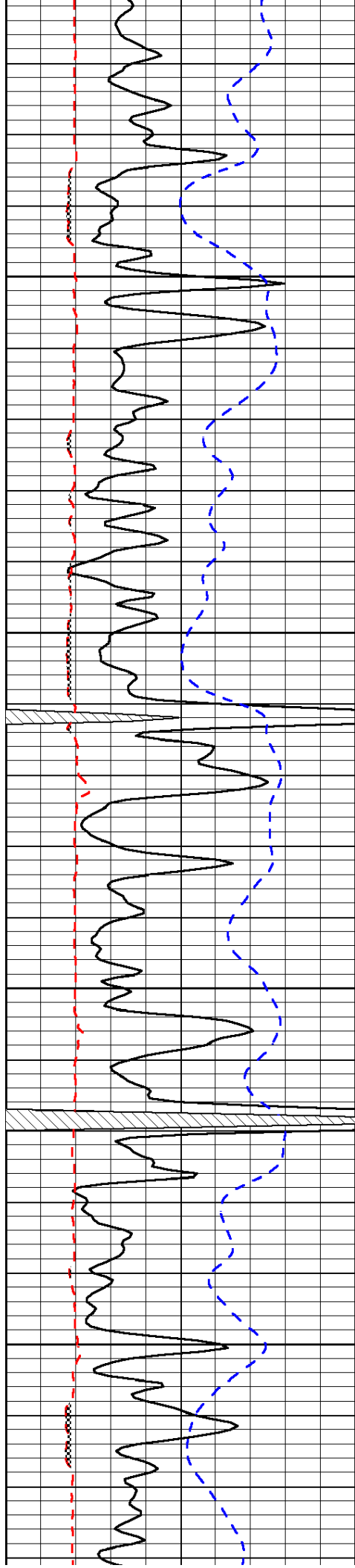
-32

-31

-32

-31

-30

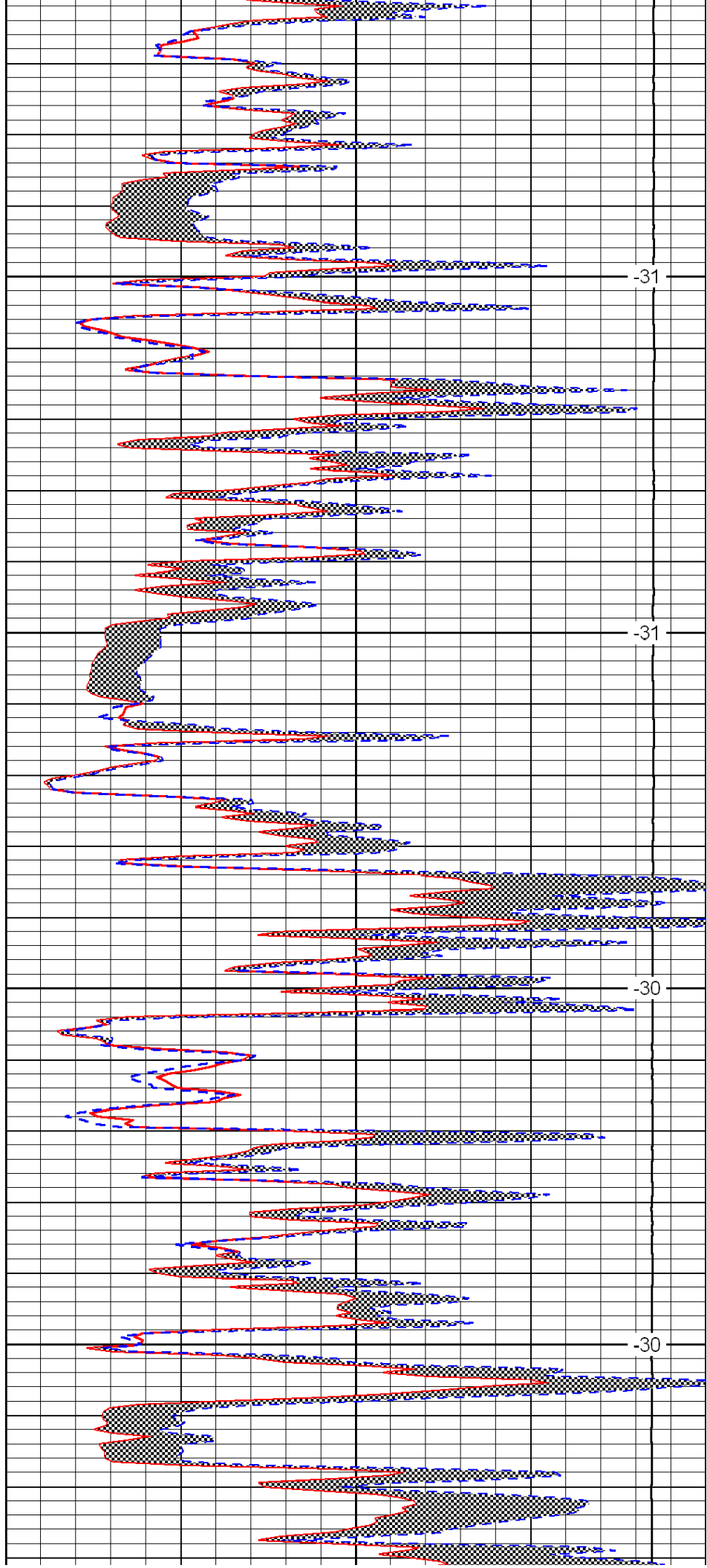


3250

3300

3350

3400

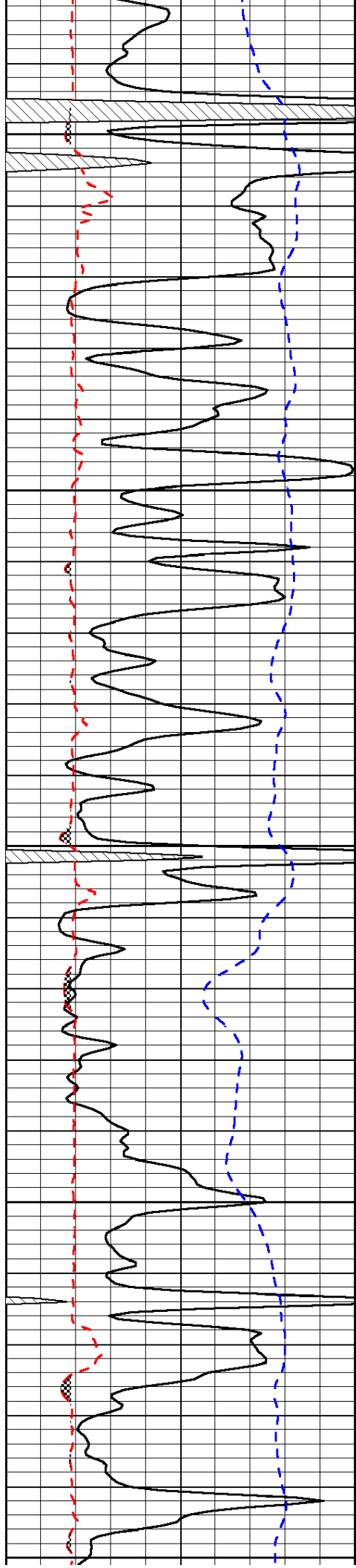


-31

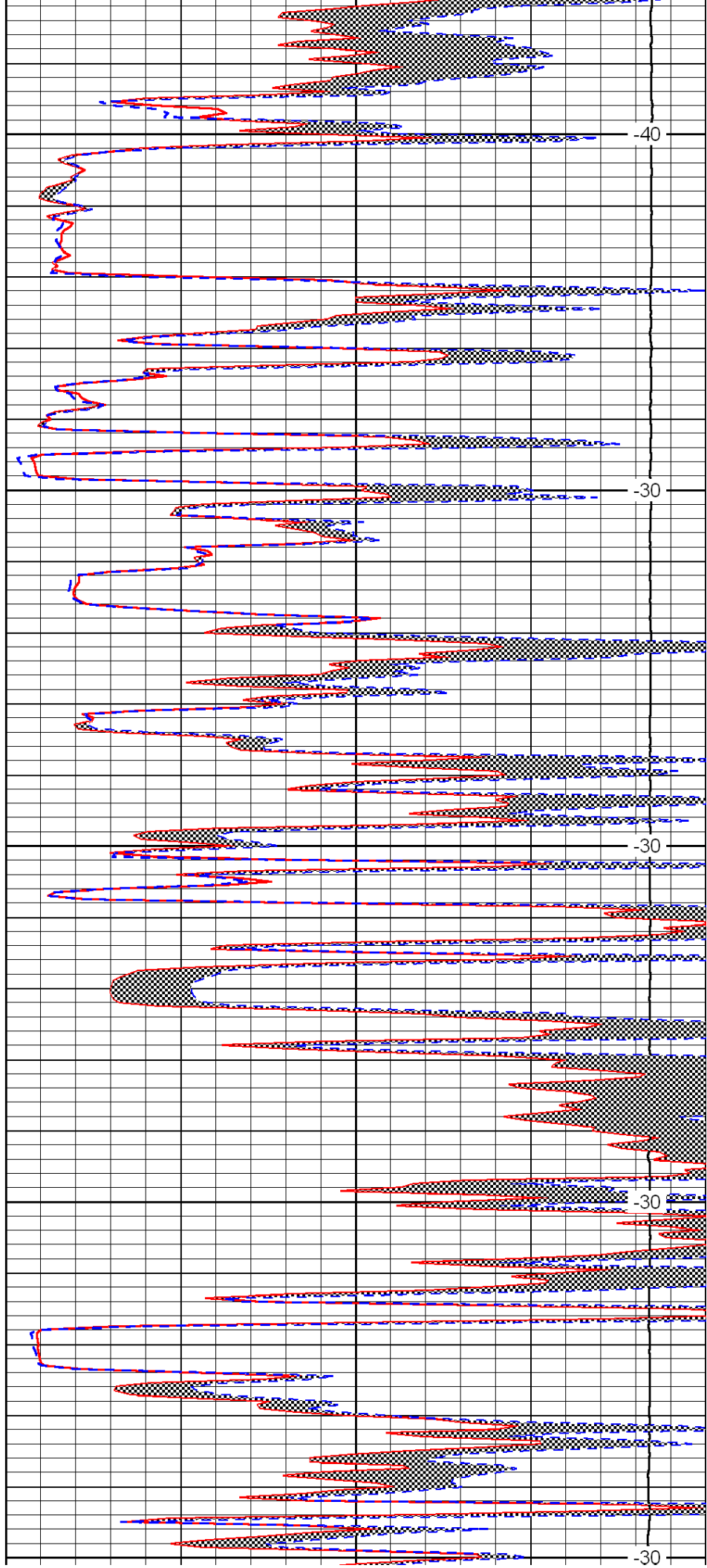
-31

-30

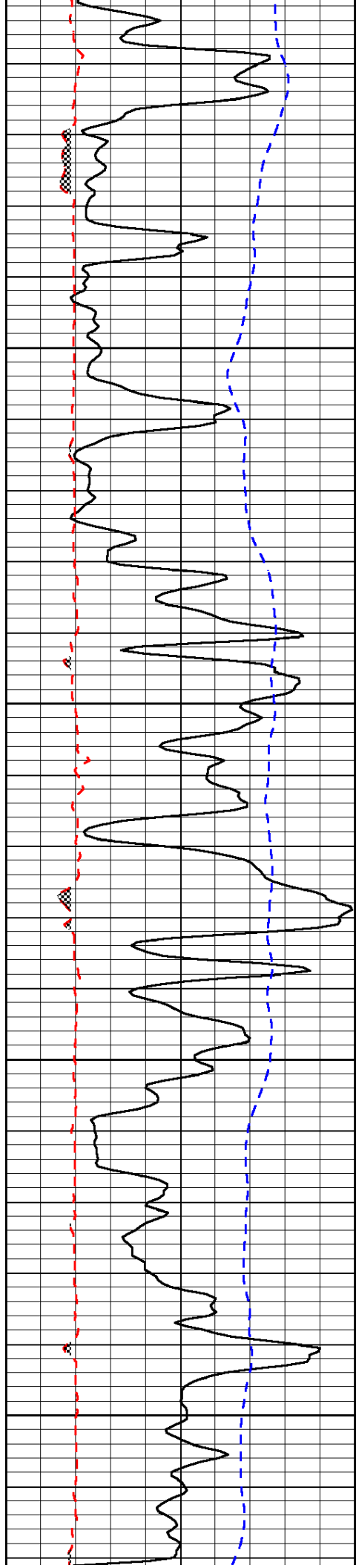
-30



3450
3500
3550
3600
3650



-40
-30
-30
-30
-30
-30

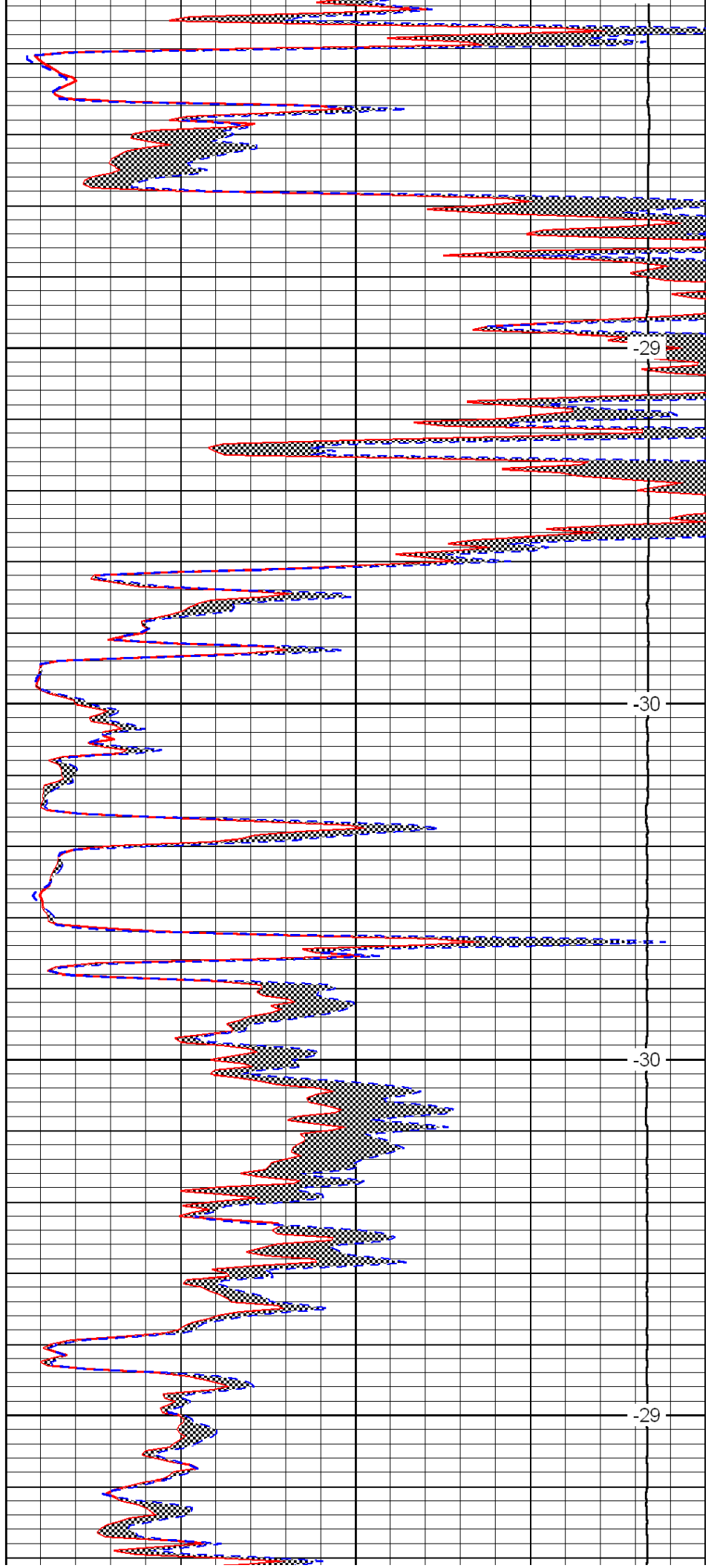


3700

3750

3800

3850

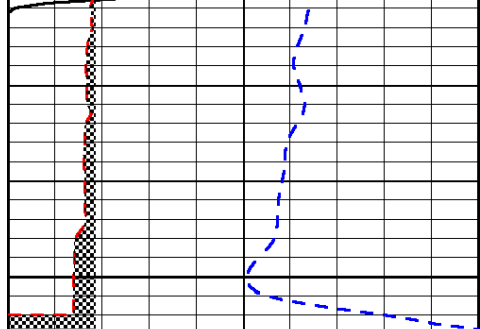


-29

-30

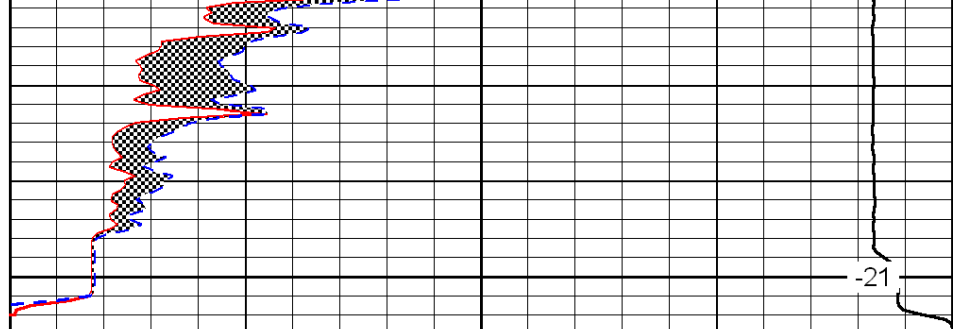
-30

-29



0	Gamma Ray	150
6	Micro Log Caliper (GAPI)	16
-200	SP (mV)	0

3900



0	Micro Inverse 1 X 1	40
0	Micro Normal 2''	40
15000	Line Weight	0

-21

LSPD