



DIGITAL LOG (785) 625-3858

Dual Induction Log

API No.	15-051-26,077-00-00		
Company	Meridian Energy Inc.		
Well	Staab No. 1		
Field			
County	Elilis	State	Kansas
Location	SW SW 510' FSL & 920' FWL		
Sec:	35	Twp:	13 S Rge: 19 W
Other Services	CNL/CDL MEL		

Permanent Datum	Ground Level	Elevation	2178
Log Measured From	Kelly Bushing	6	Ft. Above Perm. Datum
Drilling Measured From	Kelly Bushing		
Date	2/23/2011		

Run Number	One
Depth Driller	3895
Depth Logger	3898
Bottom Logged Interval	3897
Top Log Interval	200
Casing Driller	8.625 @ 238
Casing Logger	233
Bit Size	7.875
Type Fluid in Hole	Chemical
Salinity, ppm CL	9000
Density / Viscosity	9.1   62
pH / Fluid Loss	9.5   8.8
Source of Sample	Flowline
Rm @ Meas. Temp	.66 @ 56
Rmf @ Meas. Temp	.50 @ 56
Rmc @ Meas. Temp	.89 @ 56
Source of Rmf / Rmc	Charts
Rm @ BHT	.32 @ 115
Operating Rig Time	4 Hours
Max Rec. Temp. F	115
Equipment Number	10
Location	Hays
Recorded By	Jim Schuler
Witnessed By	Neal LaFon

<<< Fold Here >>>

All interpretations are opinions based on inferences from electrical or other measurements and we cannot and do not guarantee the accuracy or correctness of any interpretation, and we shall not, except in the case of gross or willful negligence on our part, be liable or responsible for any loss, costs, damages, or expenses incurred or sustained by anyone resulting from any interpretation made by any of our officers, agents or employees. These interpretations are also subject to our general terms and conditions set out in our current Price Schedule.

Comments

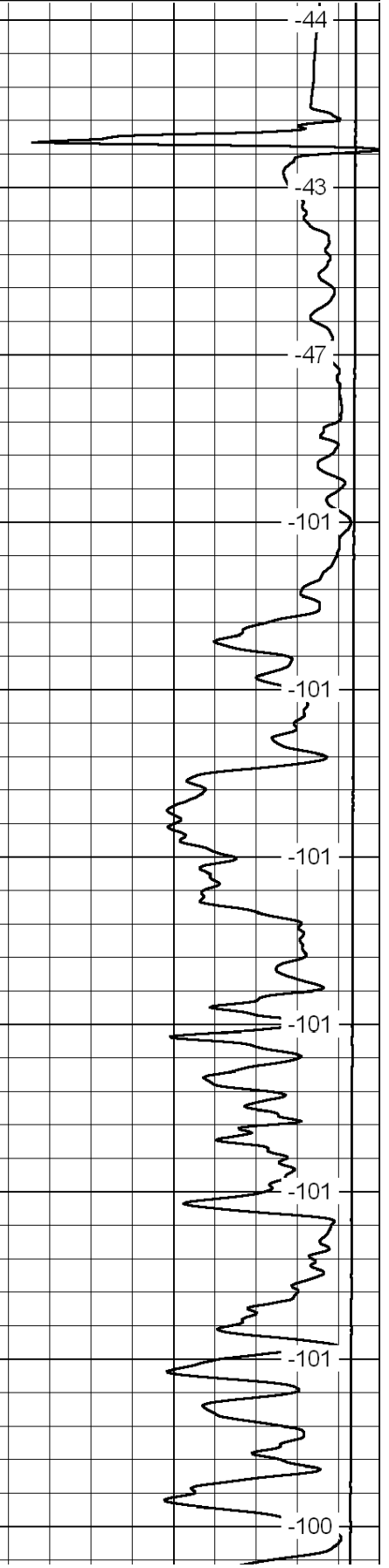
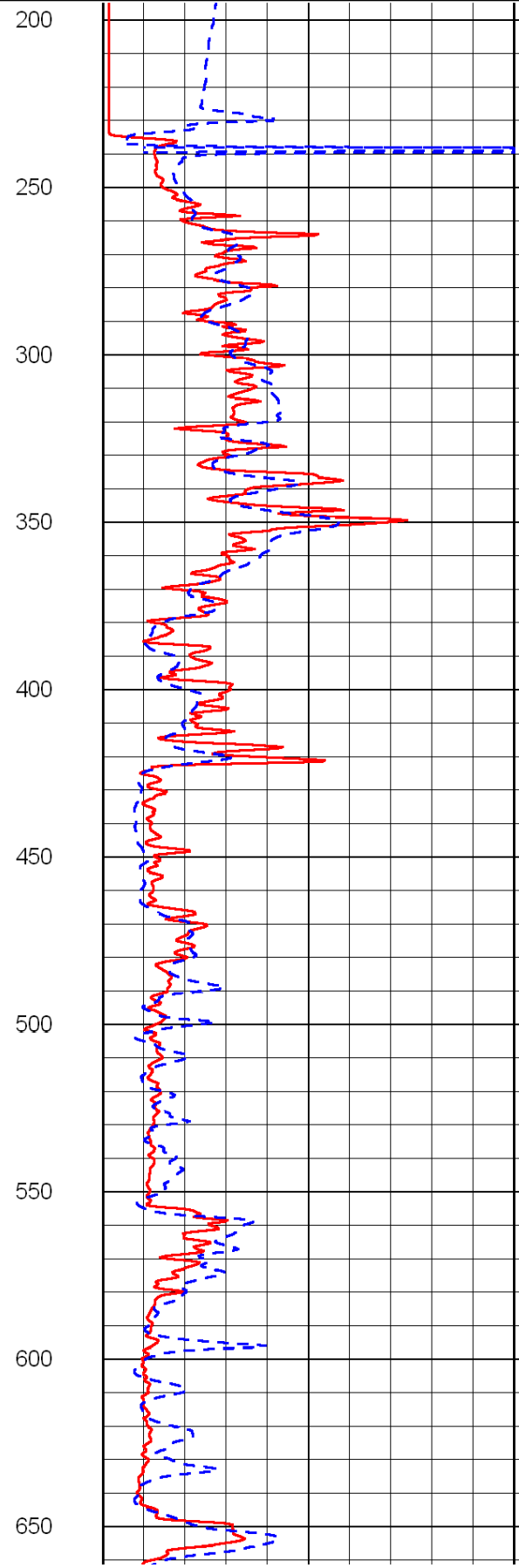
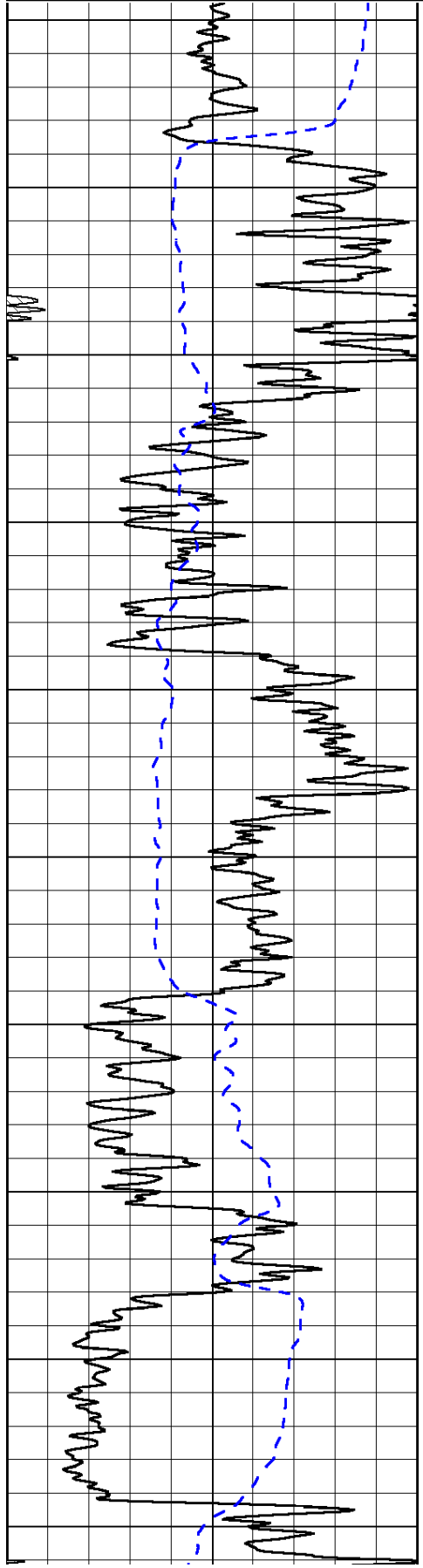
Thank you for using Log-Tech, Inc.  
(785) 625-3858

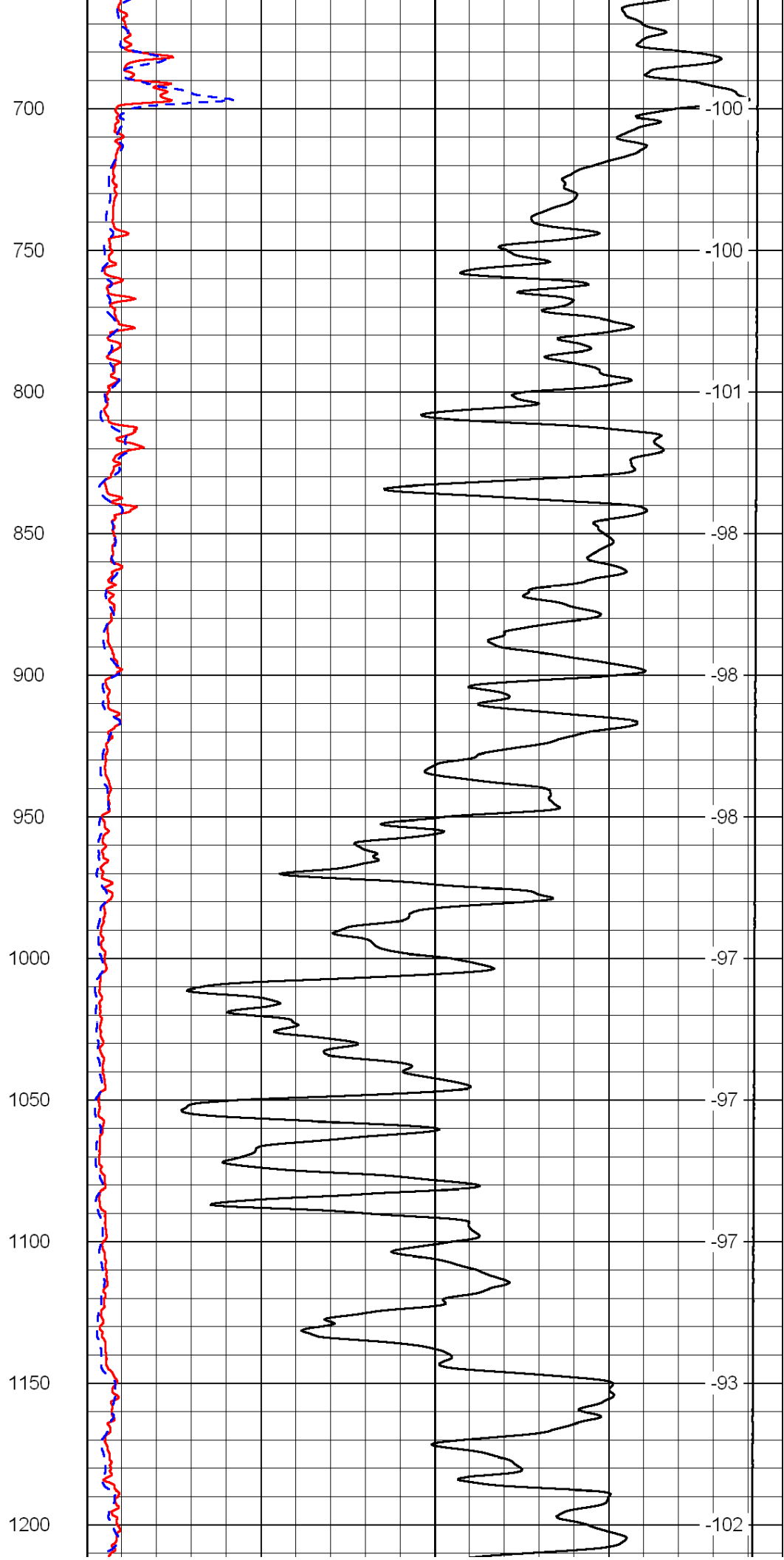
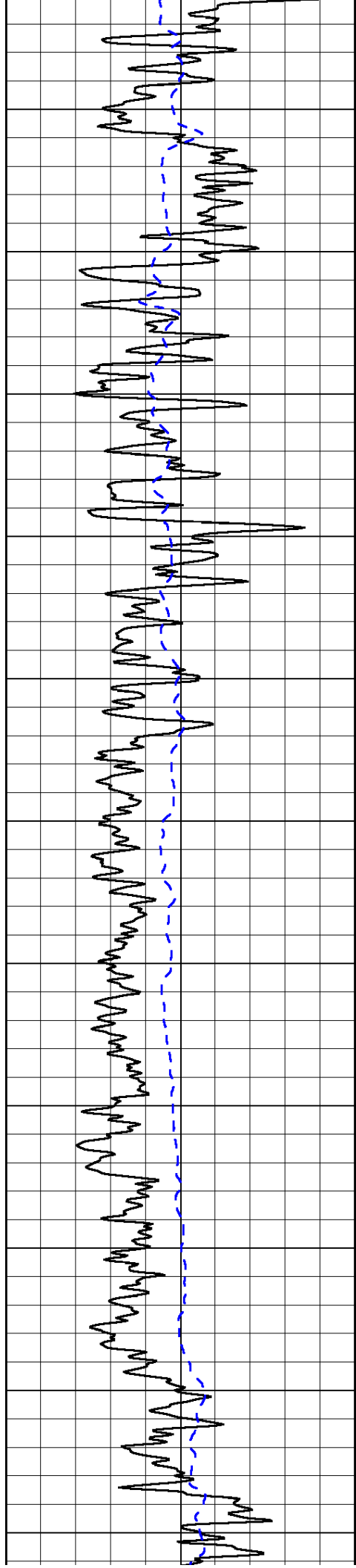
Hays, Kansas, 3 Miles West on Golf Course Road to 200 Road,  
1 North, East Into

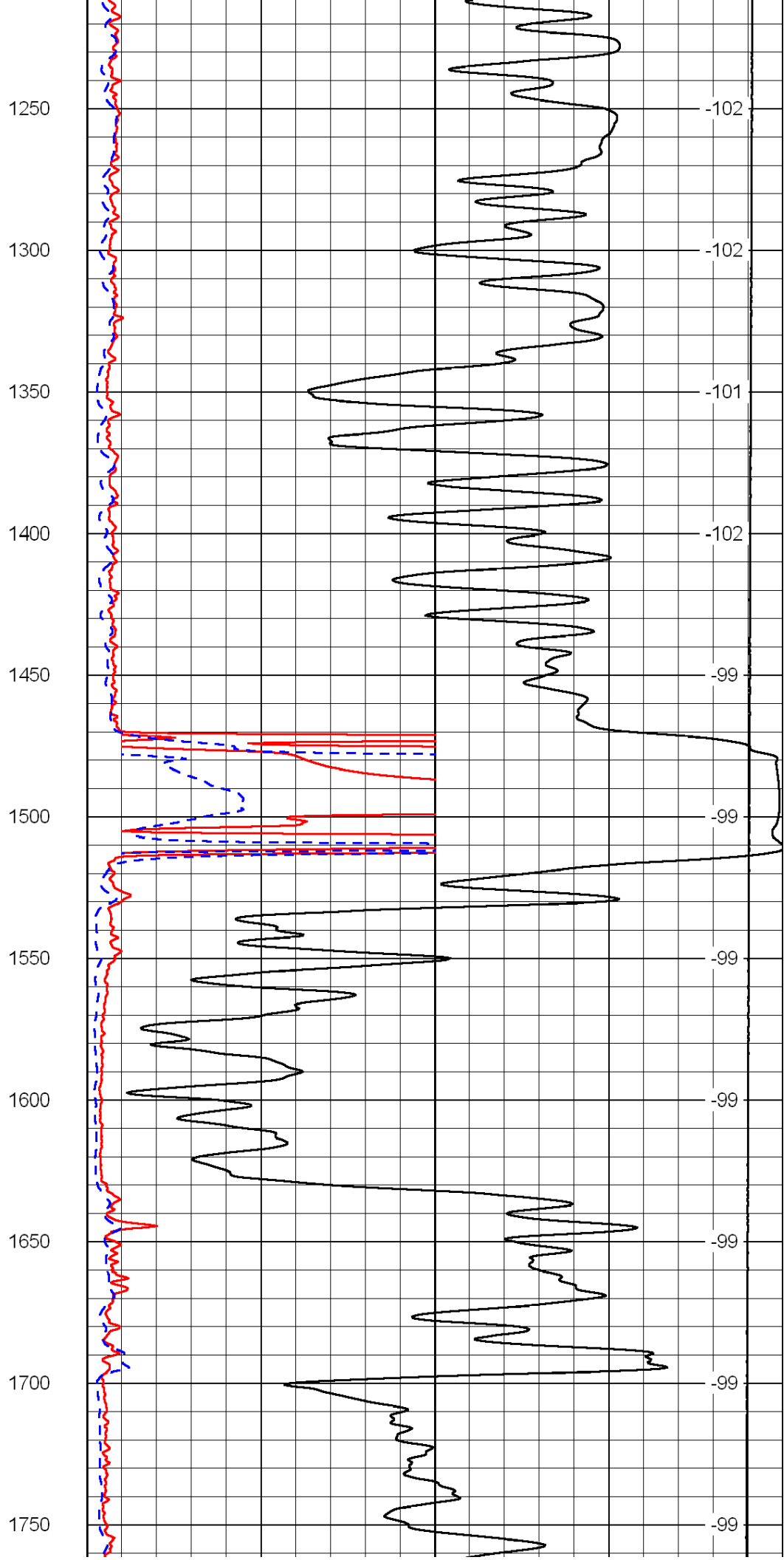
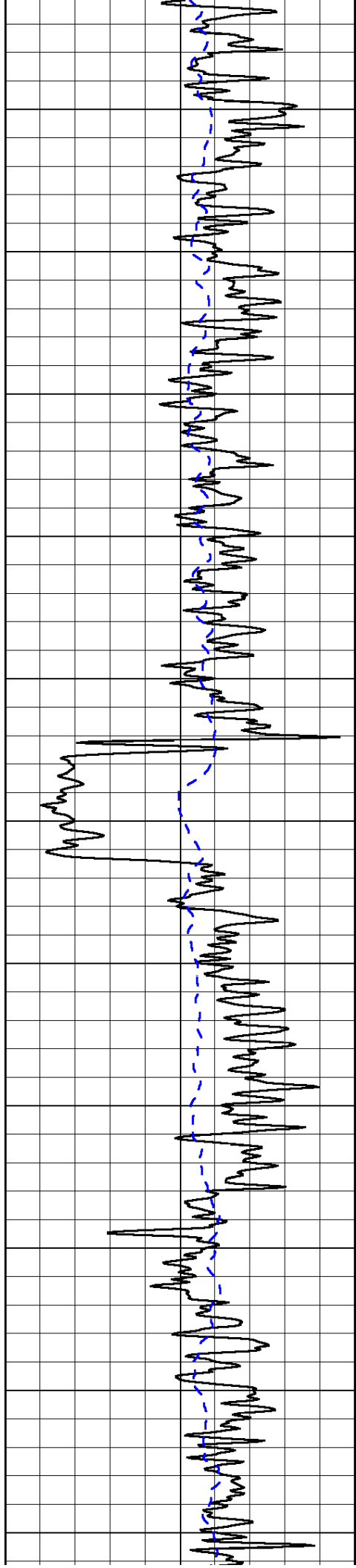
0	Gamma Ray	150
-200	SP (mV)	0

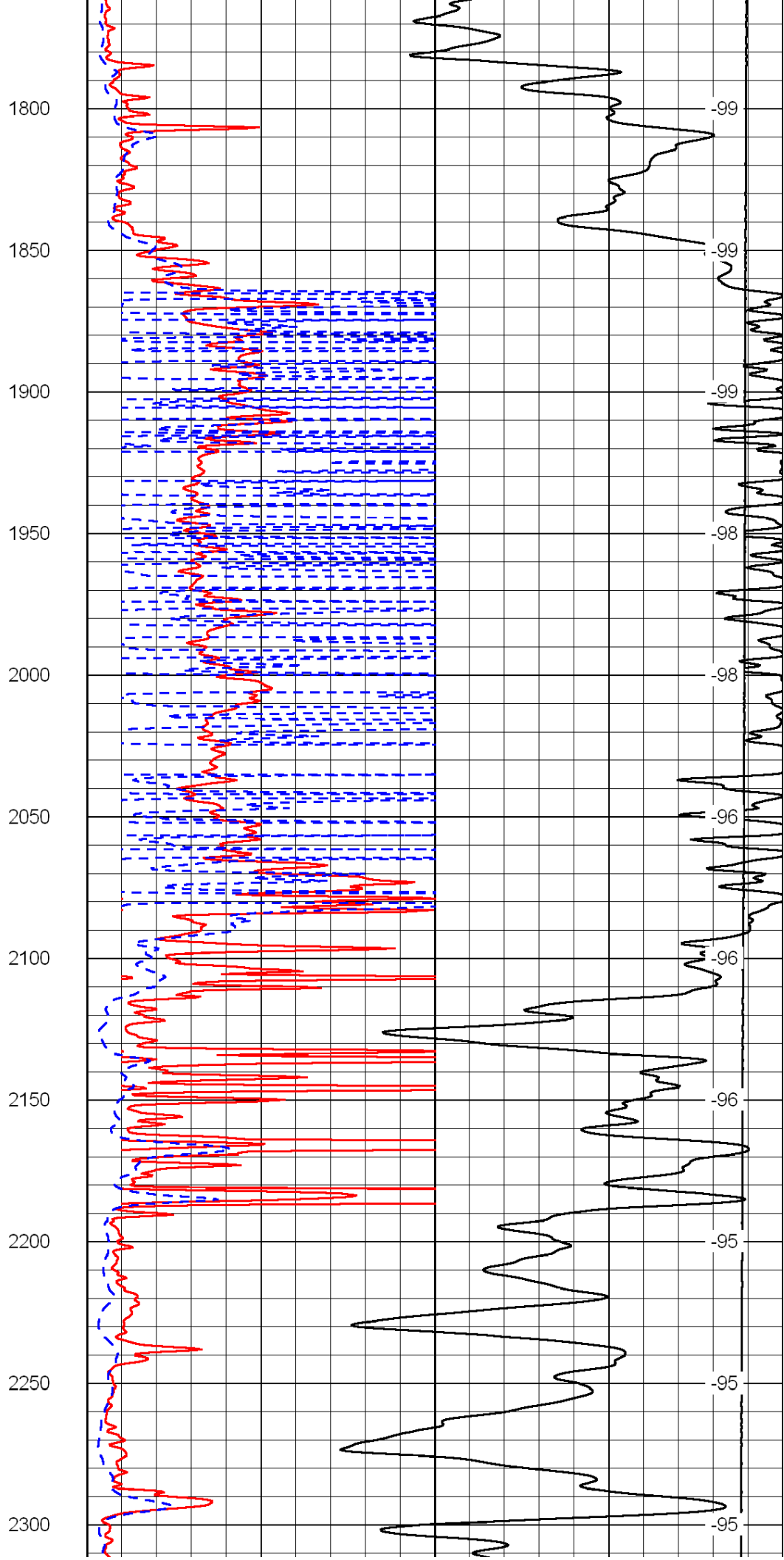
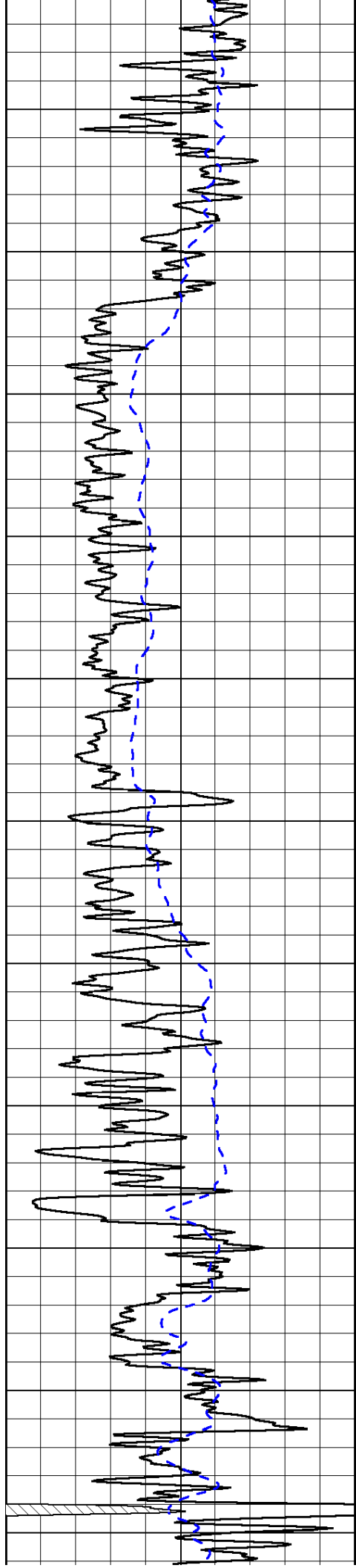
0	Shallow Resistivity	50
0	Deep Resistivity	50
1000	Conductivity	0
15000	Line Tension	0
50	Shallow Resistivity	500
50	Deep Resistivity	500

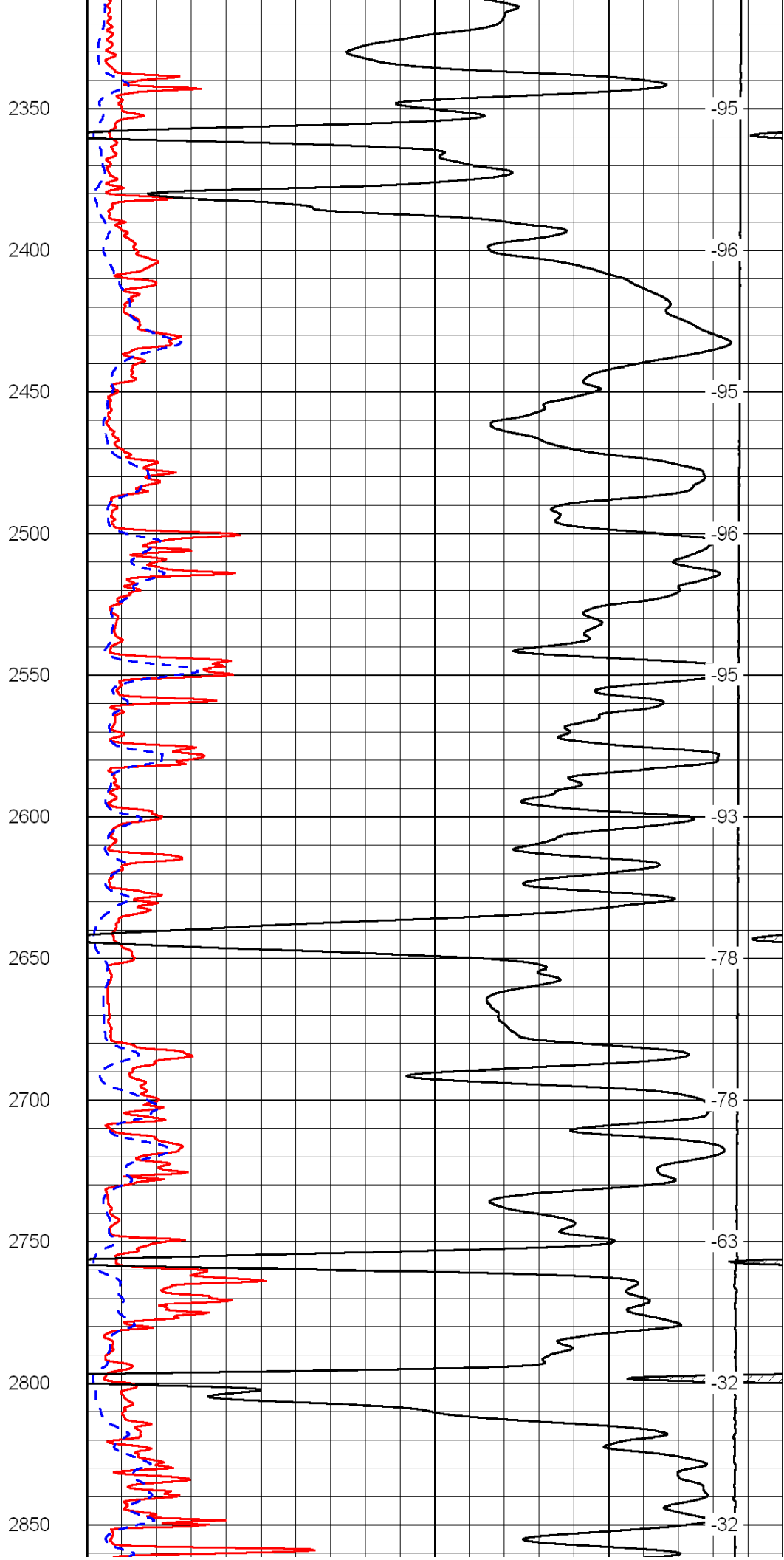
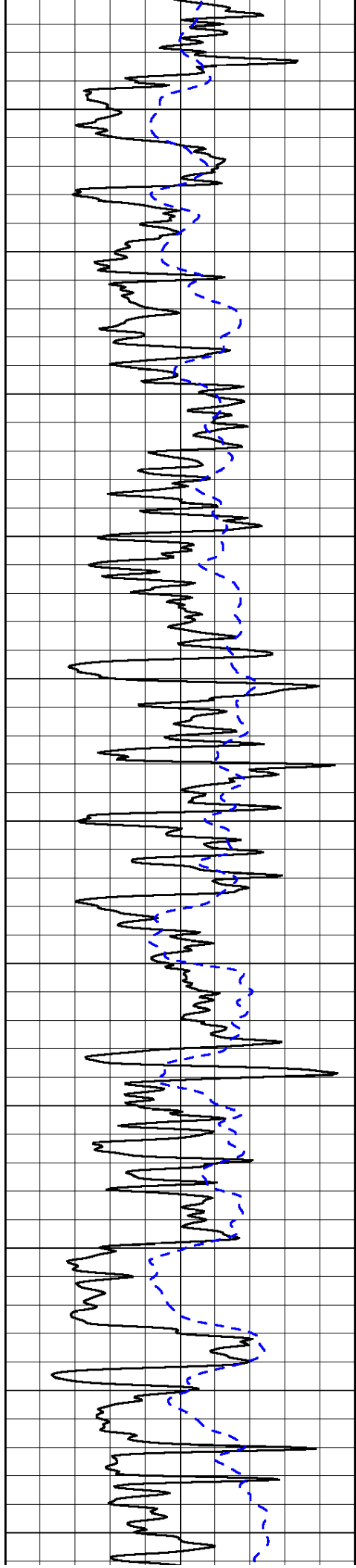
LSPD

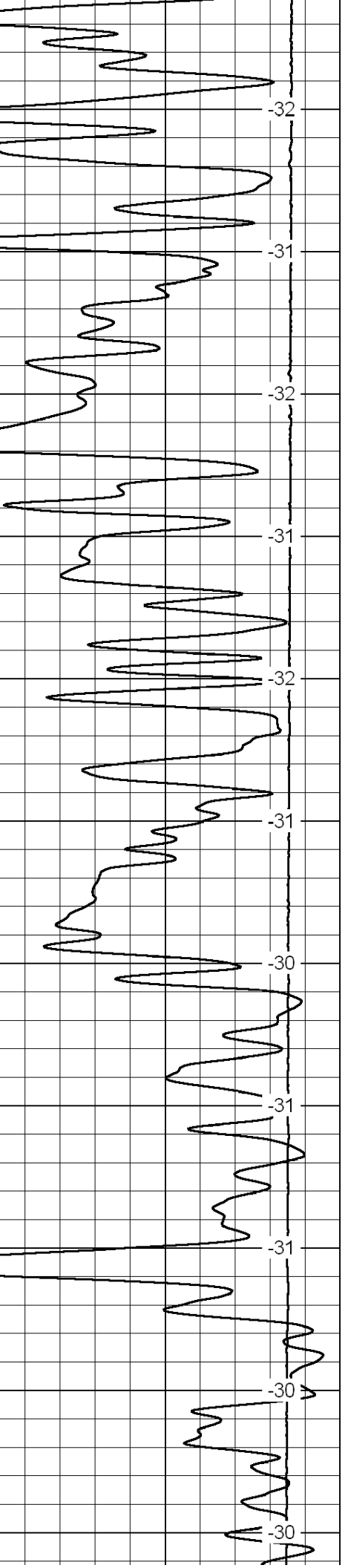
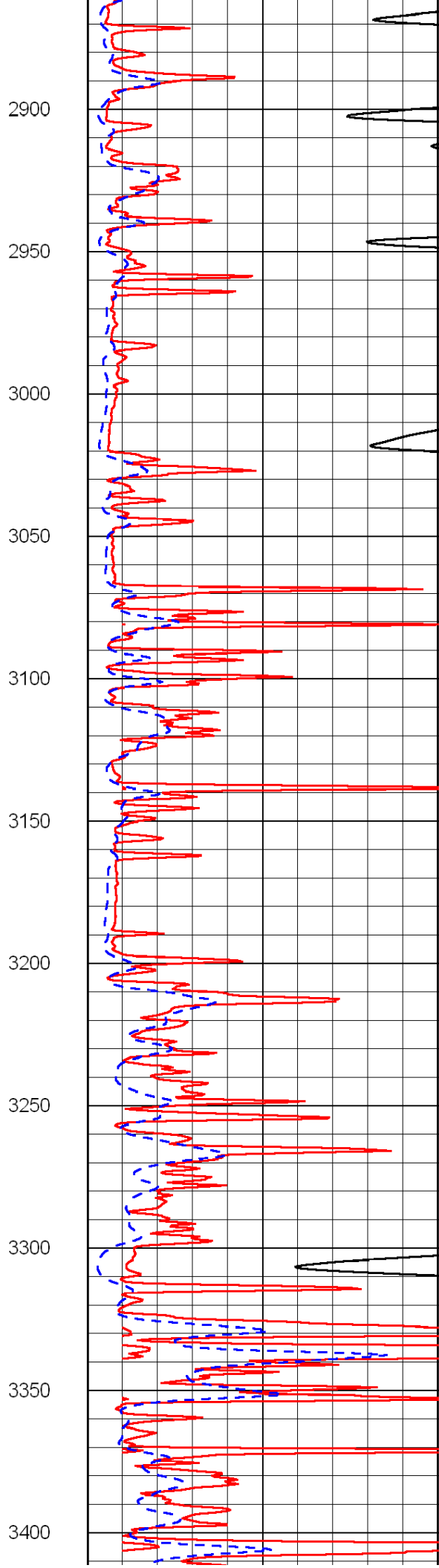
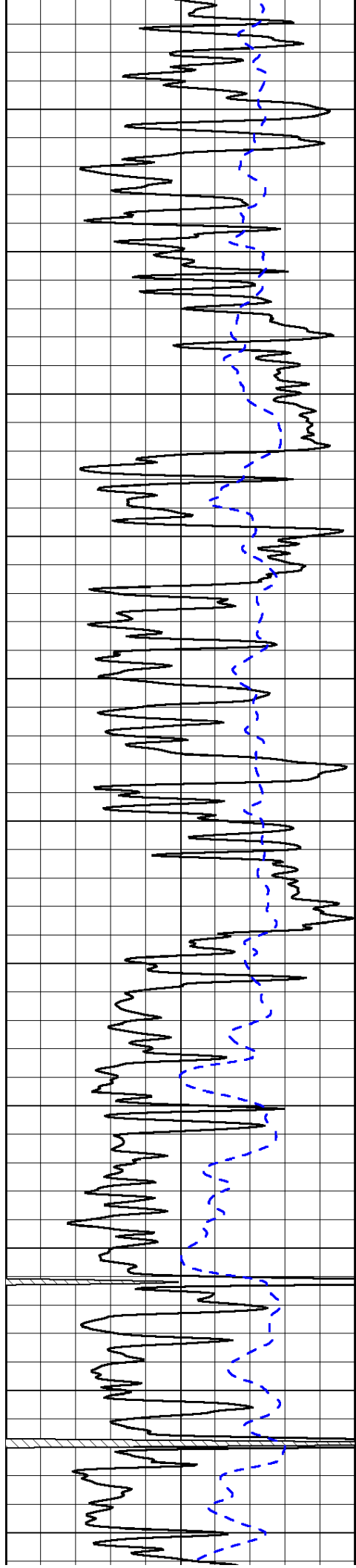


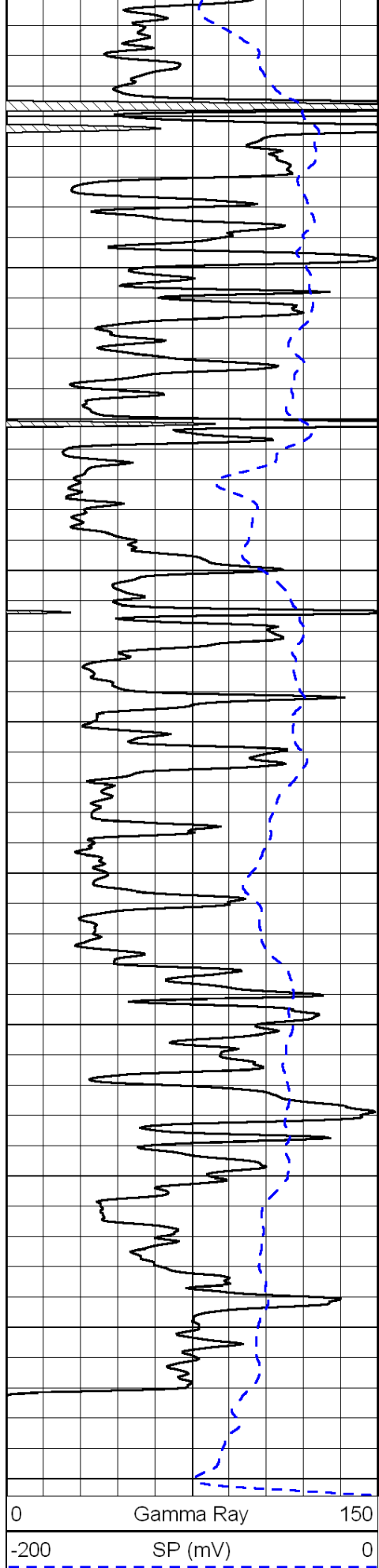




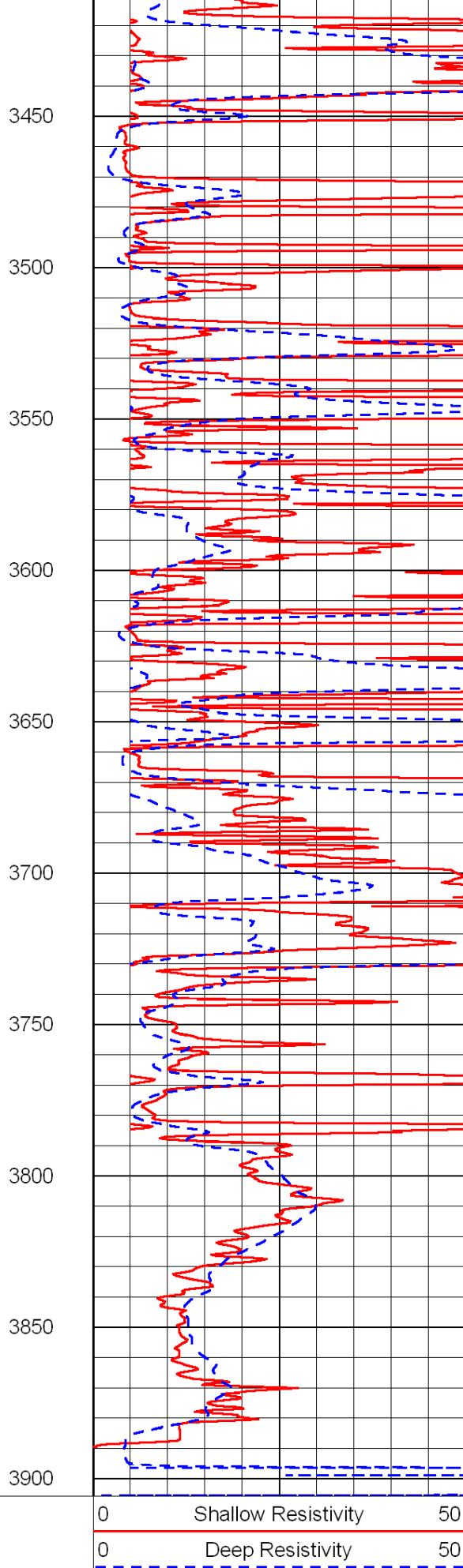




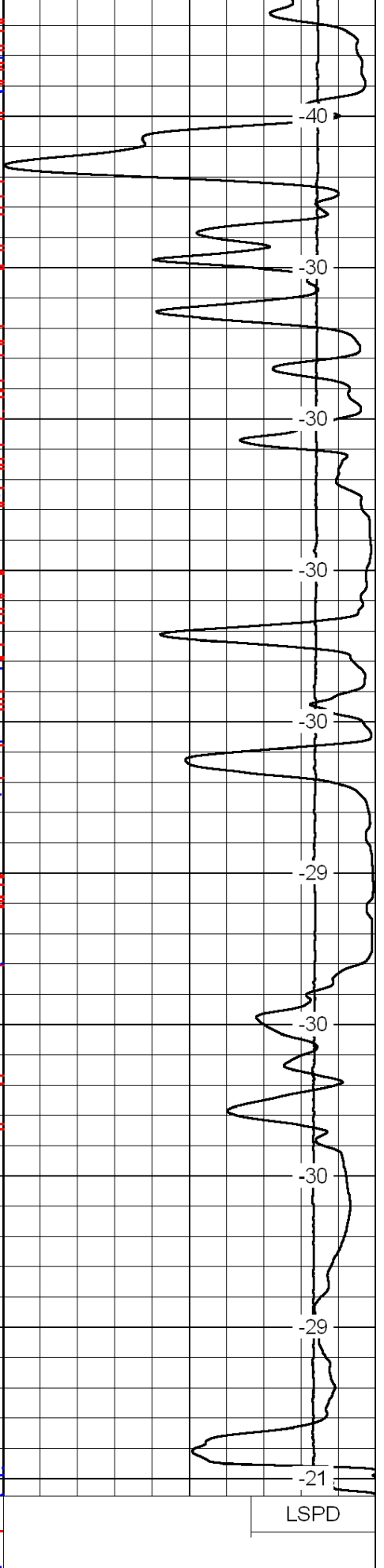




0      Gamma Ray      150  
 -200      SP (mV)      0



0      Shallow Resistivity      50  
 0      Deep Resistivity      50



LSPD

1000      Conductivity      0  
 15000      Line Tension      0

50      Shallow Resistivity      500

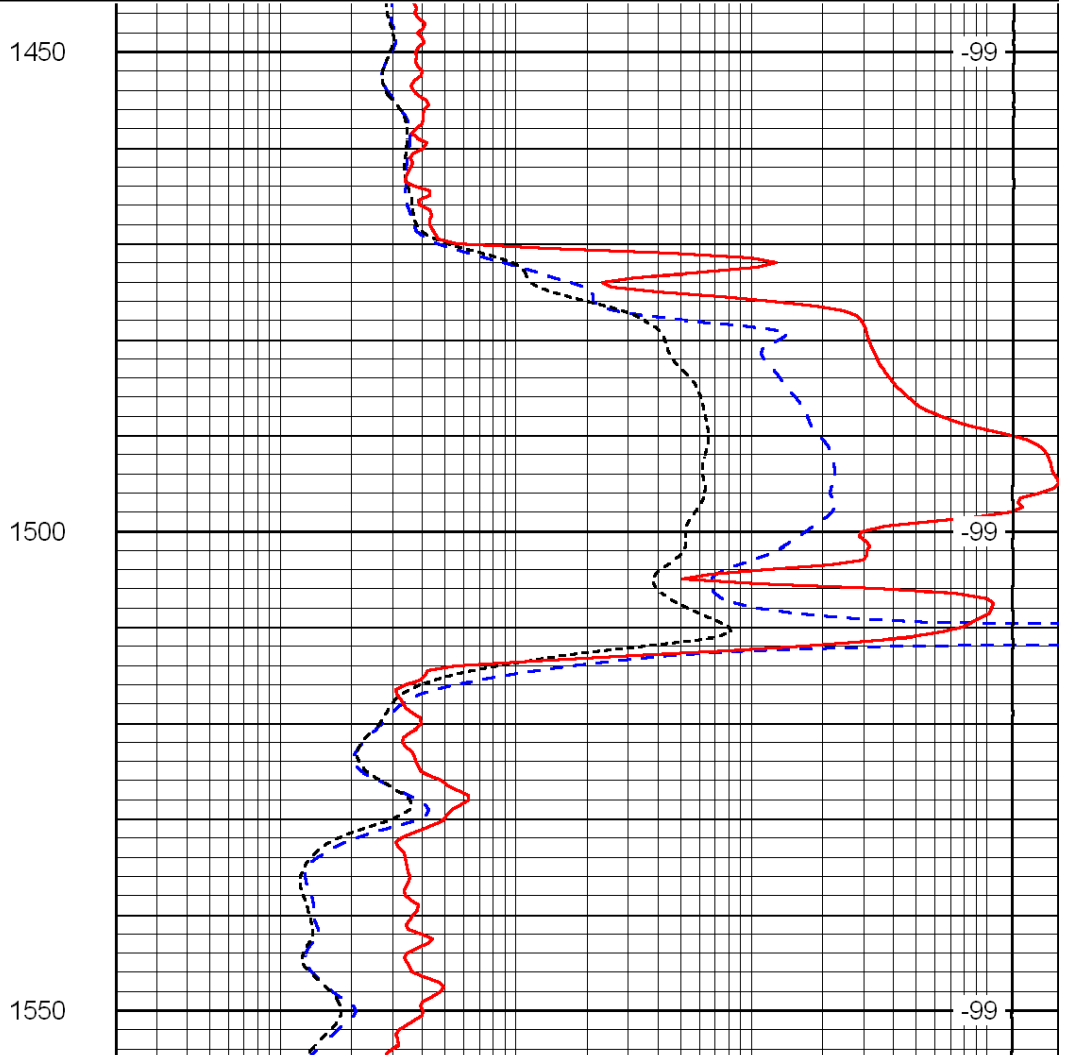
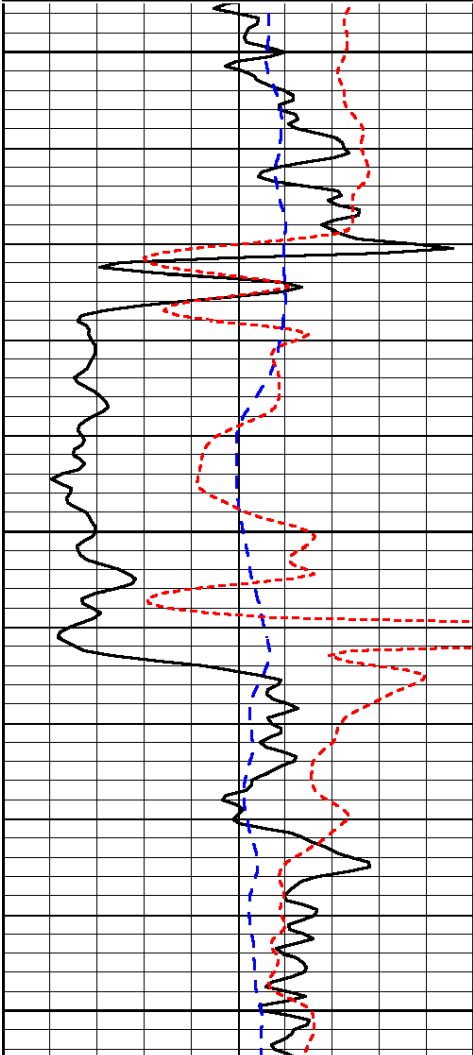


Database File: c:\warrior\data\meridian energy\_staab no. 1\meridian\_staab\_1hd.db  
 Dataset Pathname: dil/merstk  
 Presentation Format: dil  
 Dataset Creation: Wed Feb 23 16:44:15 2011  
 Charted by: Depth in Feet scaled 1:240

0	Gamma Ray	150
-200	SP (mV)	0
-160	Rxo / Rt	40

0.2	Deep Resistivity	2000
0.2	Medium Resistivity	2000
0.2	Shallow Resistivity	2000
15000	Line Tension	0

LSPD



0	Gamma Ray	150
-200	SP (mV)	0
-160	Rxo / Rt	40

0.2	Deep Resistivity	2000
0.2	Medium Resistivity	2000
0.2	Shallow Resistivity	2000
15000	Line Tension	0

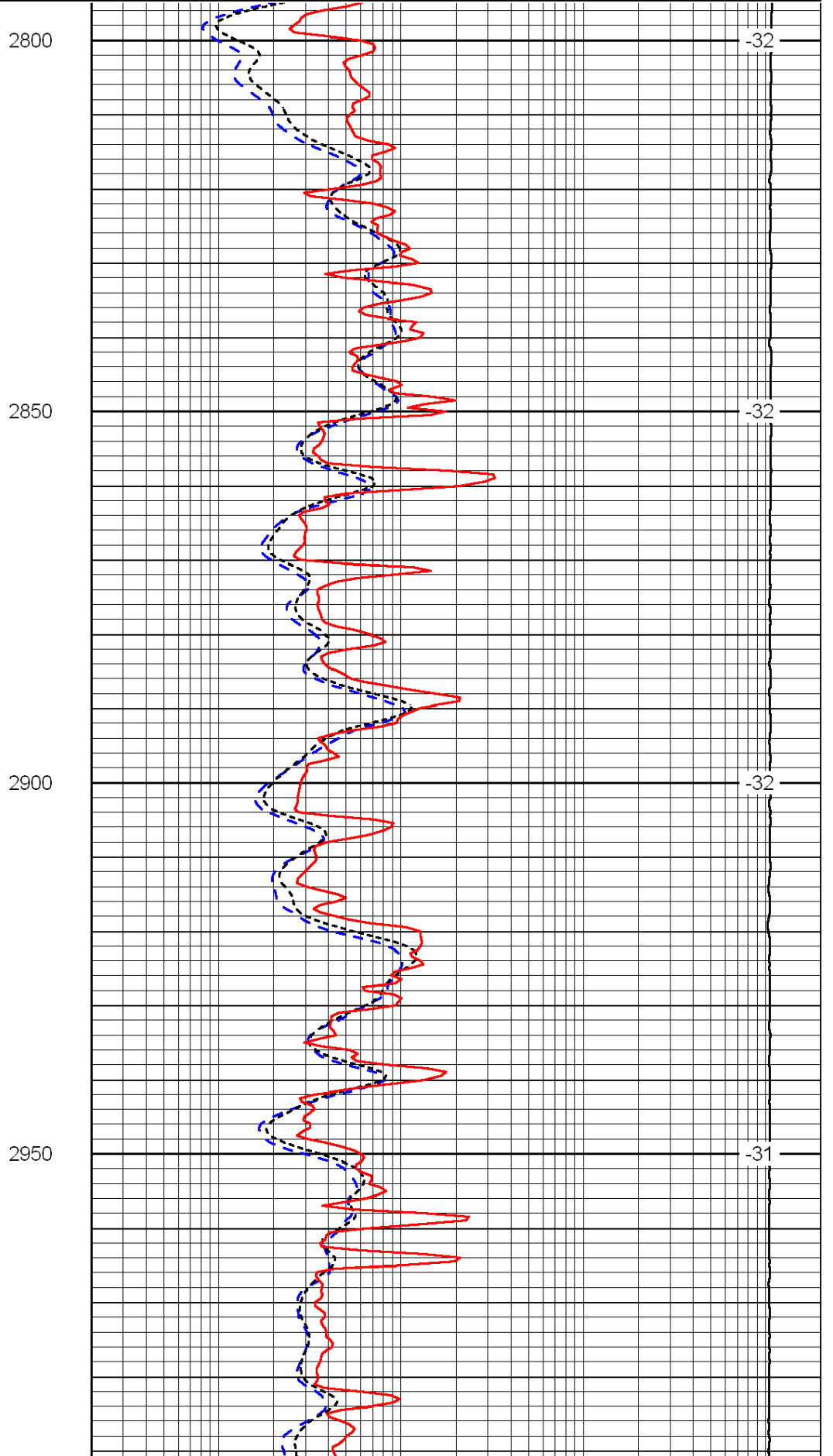
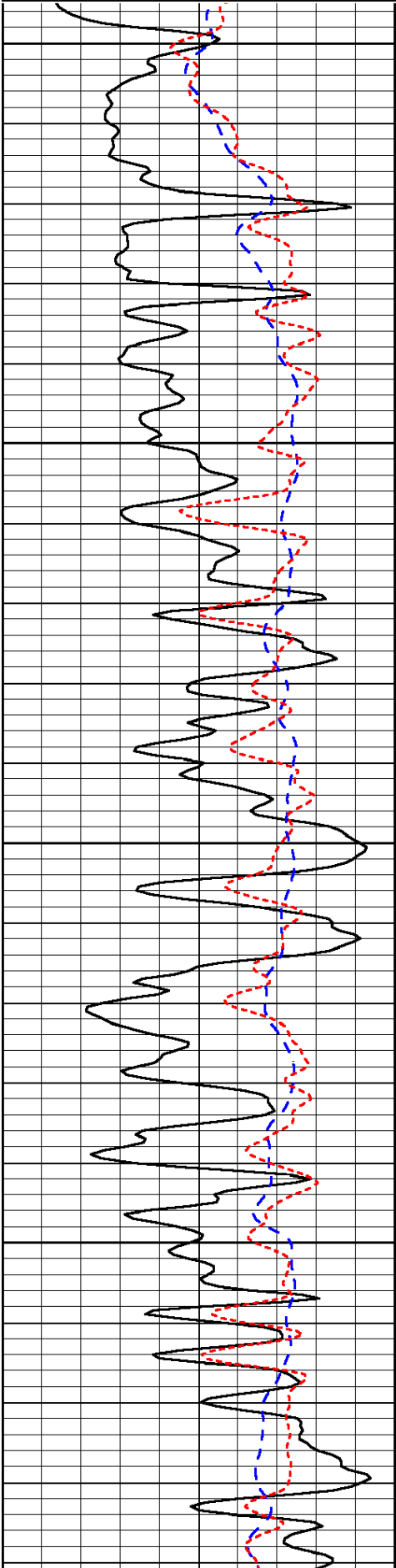
LSPD

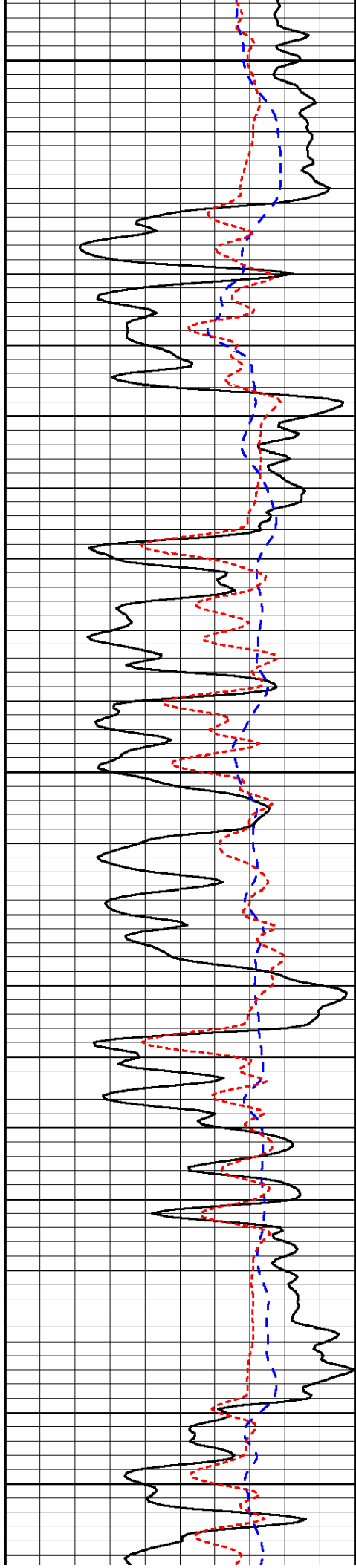
Database File: c:\warrior\data\meridian energy\_staab no. 1\meridian\_staab\_1hd.db  
 Dataset Pathname: dil/merstk  
 Presentation Format: dil  
 Dataset Creation: Wed Feb 23 16:44:15 2011  
 Charted by: Depth in Feet scaled 1:240

0	Gamma Ray	150
-200	SP (mV)	0
-160	Rxo / Rt	40

0.2	Deep Resistivity	2000
0.2	Medium Resistivity	2000
0.2	Shallow Resistivity	2000
15000	Line Tension	0

LSPD





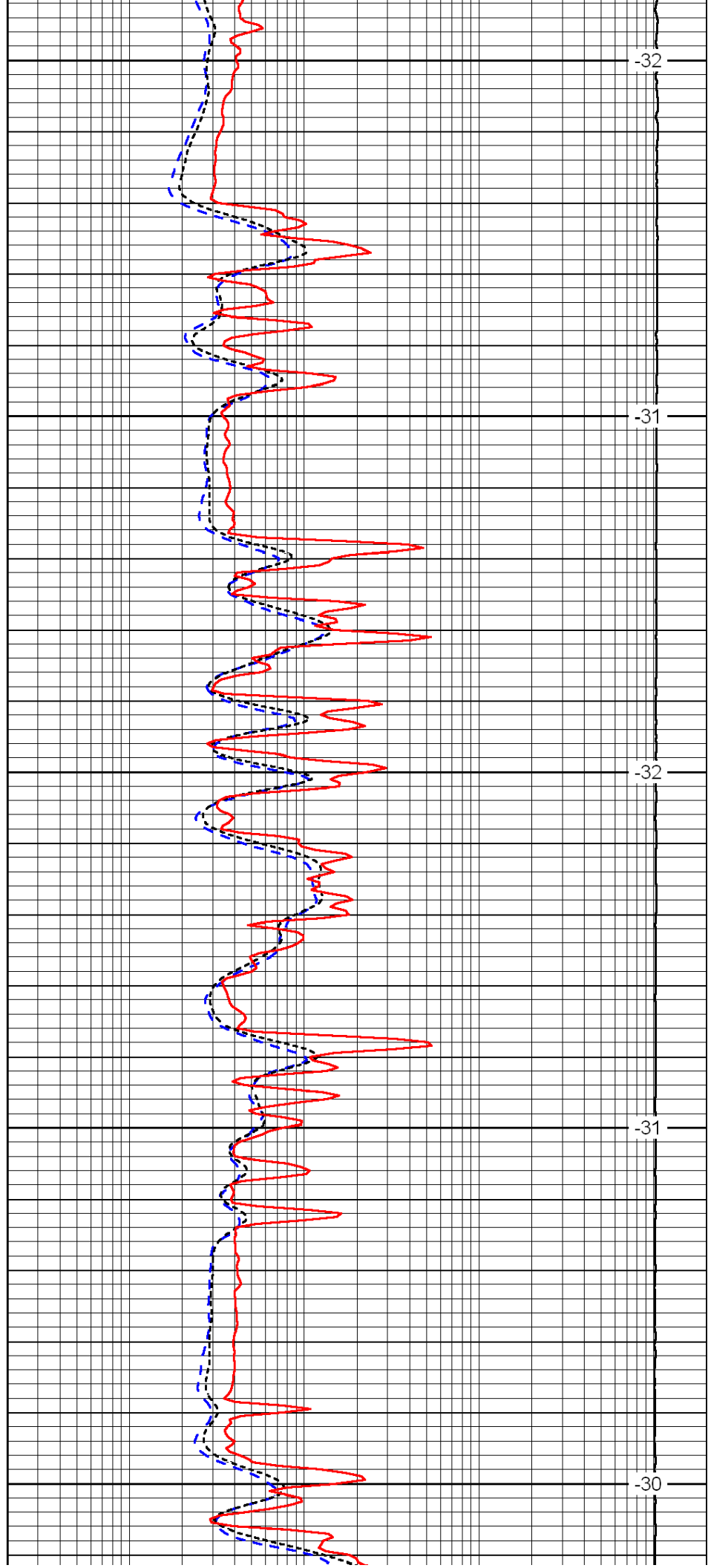
3000

3050

3100

3150

3200



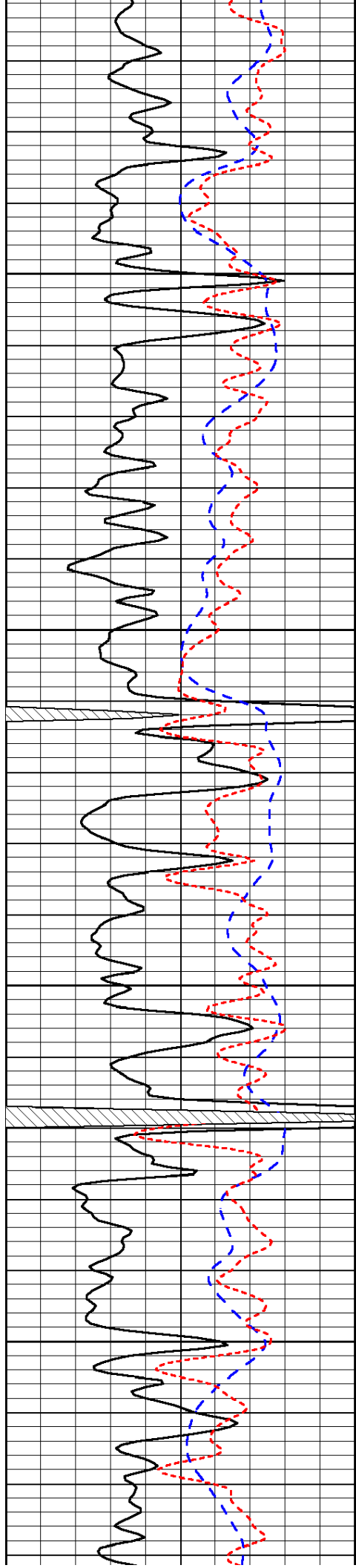
-32

-31

-32

-31

-30

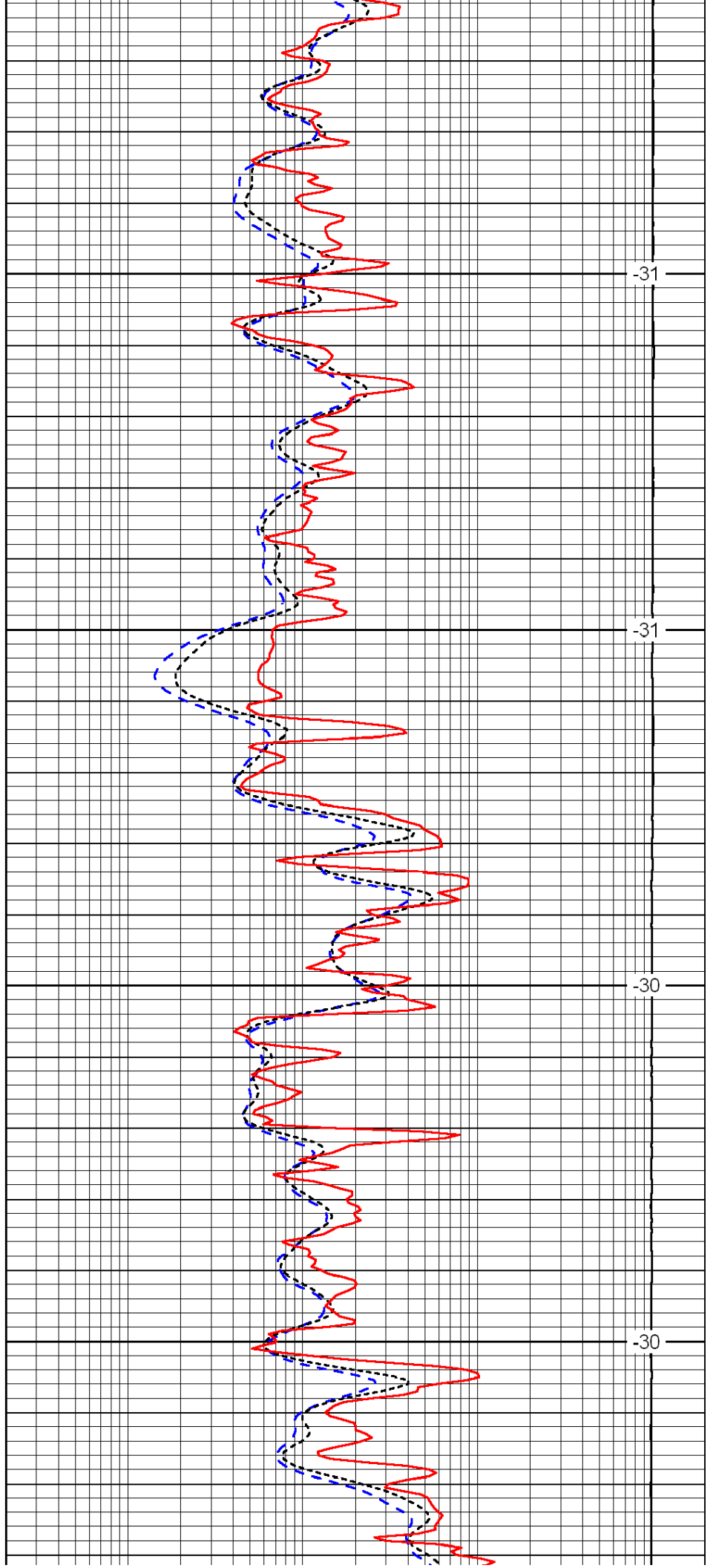


3250

3300

3350

3400

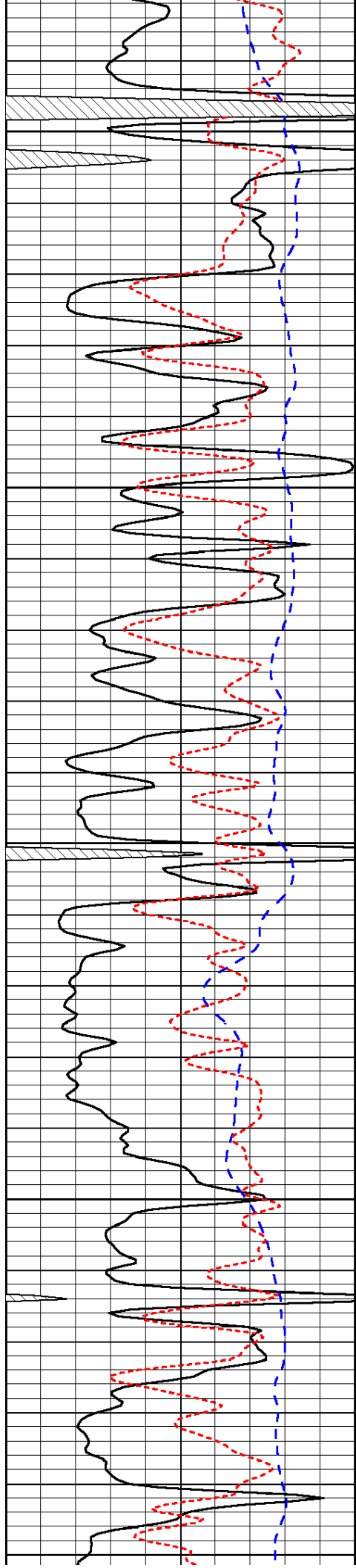


-31

-31

-30

-30



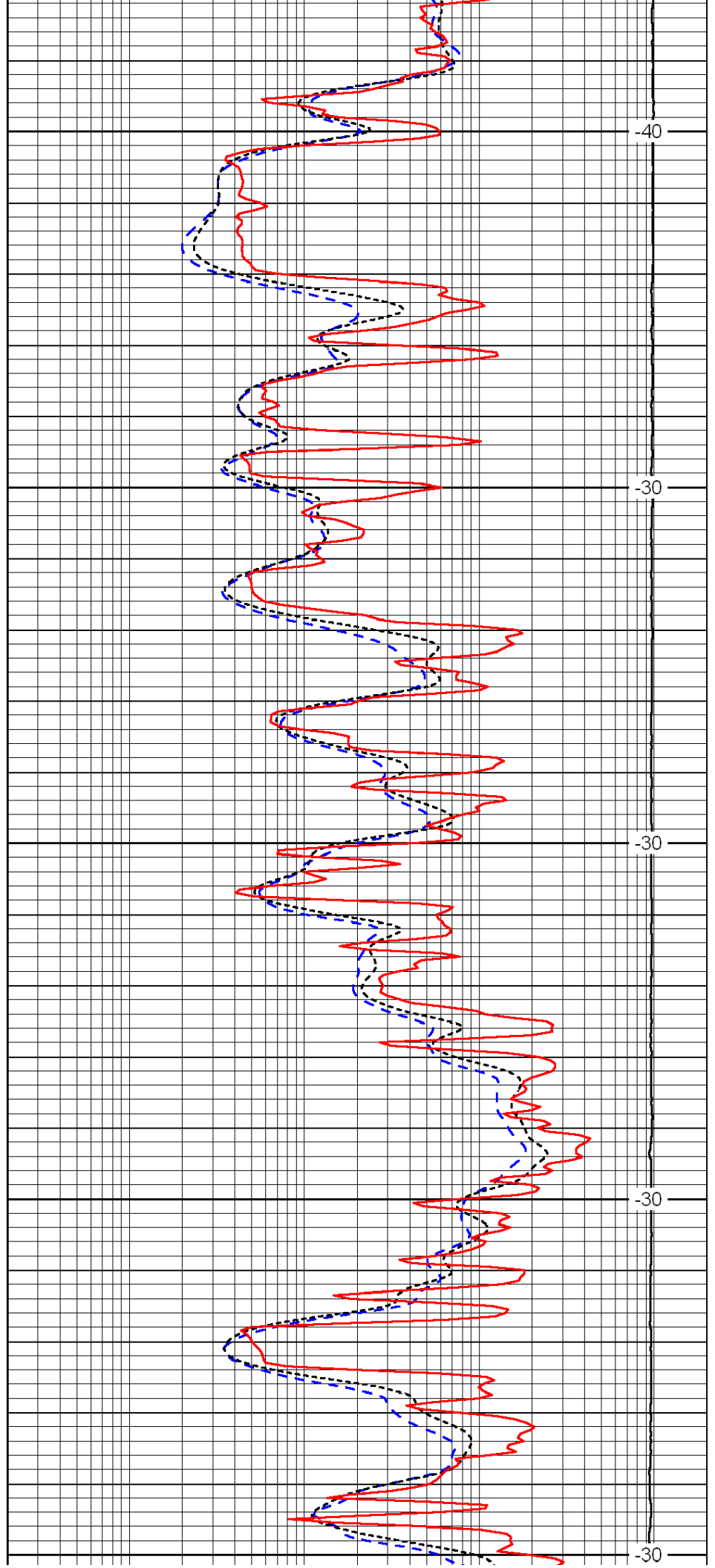
3450

3500

3550

3600

3650



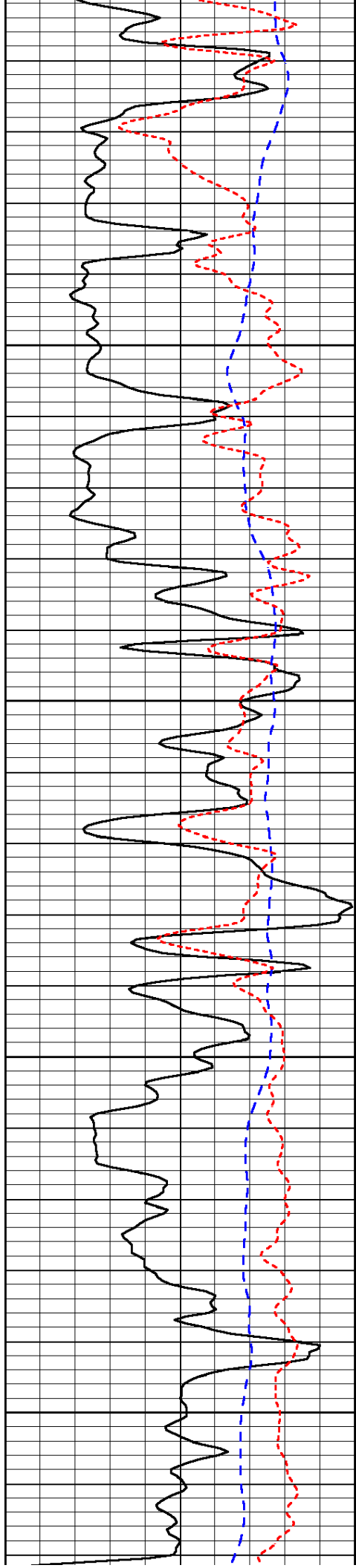
-40

-30

-30

-30

-30

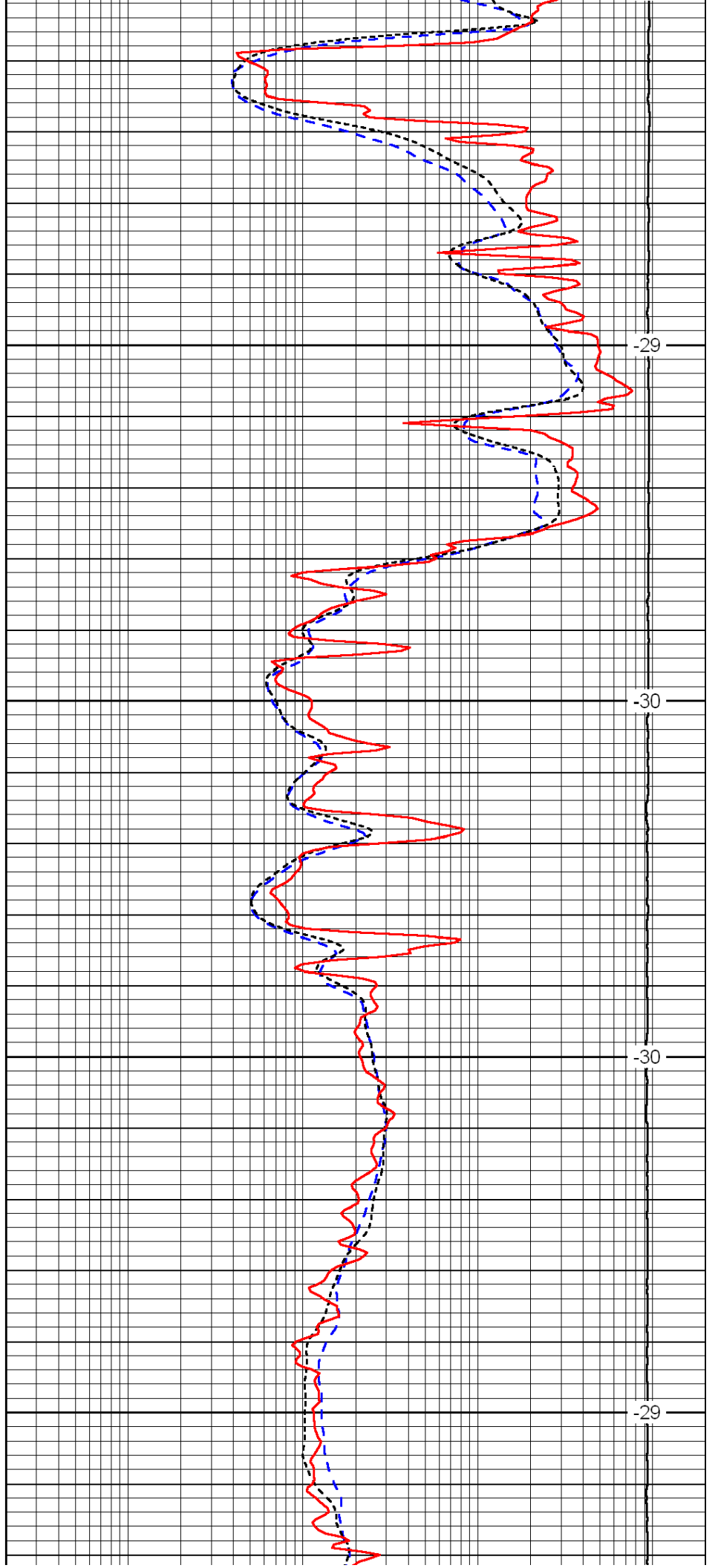


3700

3750

3800

3850

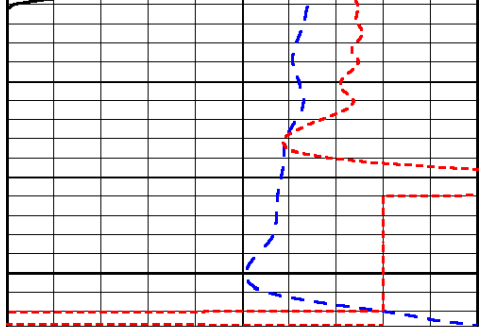


-29

-30

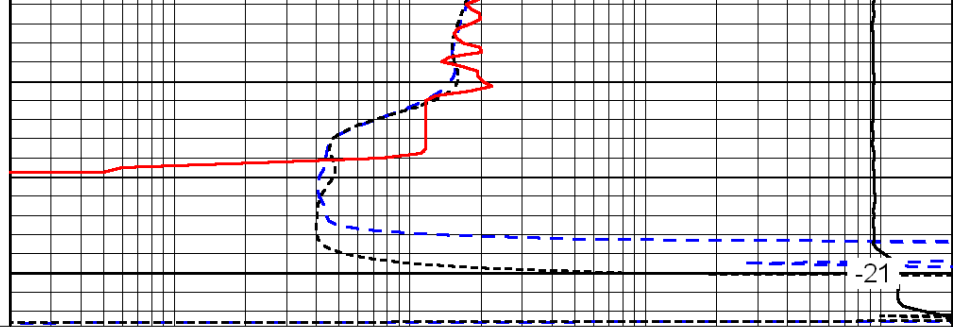
-30

-29



0	Gamma Ray	150
-200	SP (mV)	0
-160	Rxo / Rt	40

3900



0.2	Deep Resistivity	2000
0.2	Medium Resistivity	2000
0.2	Shallow Resistivity	2000
15000	Line Tension	0

LSPD