



**MIDWEST SURVEYS**  
 LOGGING - PERFORATING - CONSULTING SERVICES  
 P.O. Box 68, Osawatomie, KS 66864  
 913 / 755 - 2128

**GAMMA RAY / NEUTRON / CCL**

File No:

Company **Colt Energy, Inc.**  
 Well **Cline No. F-2**

Field **Iola**  
 County **Allen**

State **Kansas**

Location **825' FNL & 495' FEL**  
**NW-SE-NE-NE**

Sec. **16** Twp. **24S** Rge. **19E**  
 Permian/Dunsm. **GL** Elevation **554'**  
 Log Measured From **GL** K.B. **NA**  
 Drilling Measured From **GL** D.F. **NA**  
**GL 534'**

Date **12-21-2010**

Run Number **One**

Depth Logger **877.0**

Bottom Logged Interval **870.0**

Top Log Interval **20.0**

Fluid Level **Full**

Type Fluid **Water**

Density / Viscosity **NA**

Salinity - PPM Cl **NA**

Max. Recorded Temp **NA**

Estimated Cement Top **0.0**

Equipment No. **107** Location **Gravestone**

Recorded By **Steve Vindisch**

Witnessed By **Rev. Ambros**

BORE-HOLE RECORD		CASINGS RECORD				
Run No.	BIT	FROM	TO	WST	FROM	TO
One	12.25"	31.0	863.5'	0.0	10.5#	0.0
Two	6.75"	31.0	877.0	0.0	876.0	876.0
				Flapper	Set	AI
						876.0

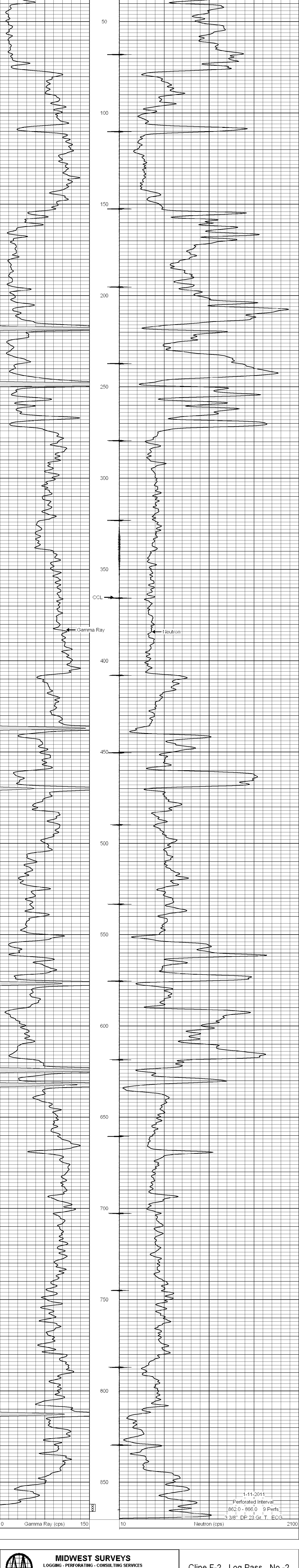
<<< Fold Here >>>

All interpretations are opinions based on inferences from electrical or other measurements and we cannot and do not guarantee the accuracy or correctness of any interpretation, and we shall not, except in the case of gross or willful negligence on our part, be liable or responsible for any loss, costs, damages, or expenses incurred or sustained by anyone resulting from any interpretation made by any of our officers, agents or employees. These interpretations are also subject to our general terms and conditions set out in our current Price Schedule.

Comments

Drilling Contractor :  
**Kurt Finney Drilling Company**

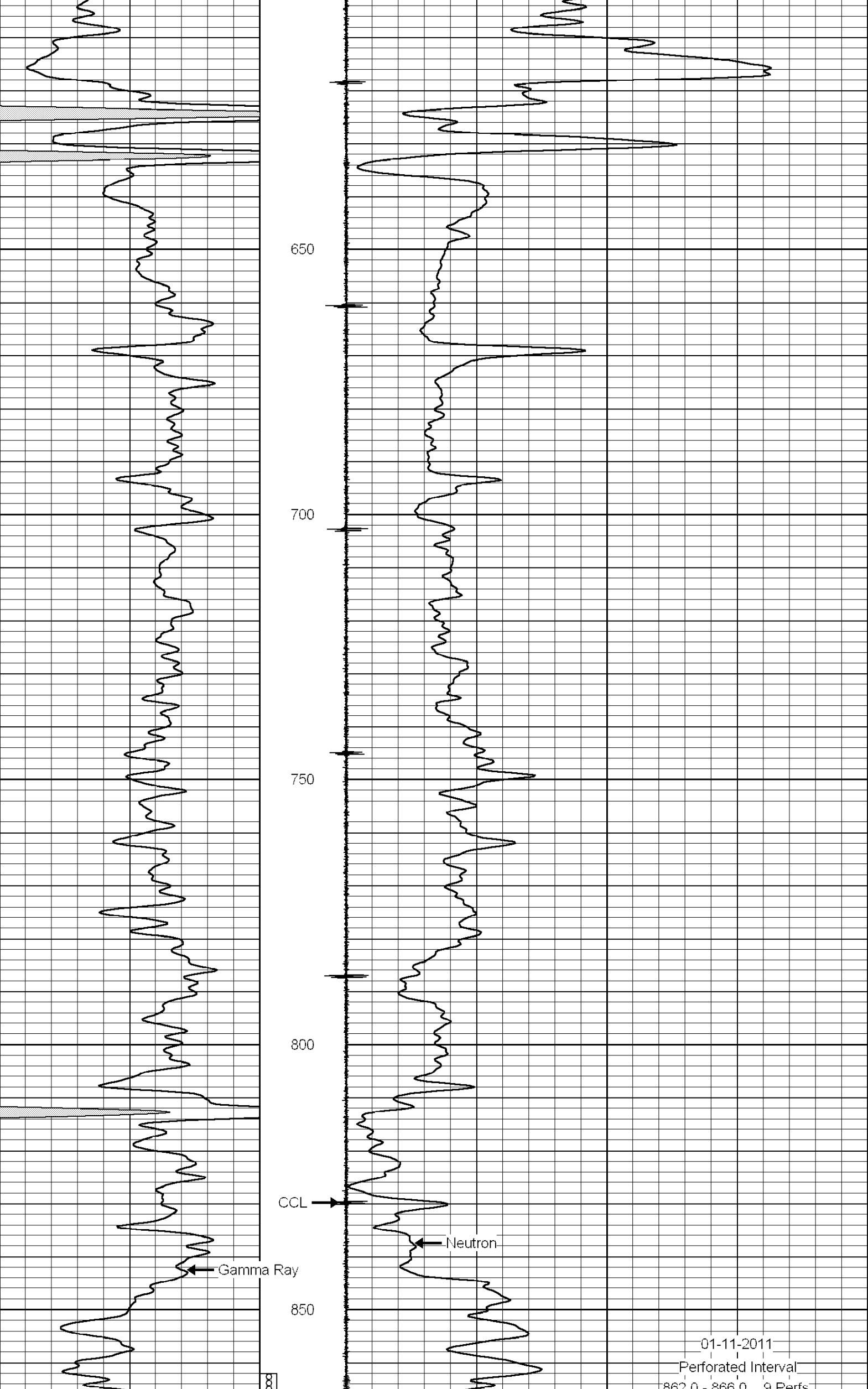
Database File: cline2f.db  
 Dataset Pathname: pass1  
 Presentation Format: gr-n-ccl  
 Dataset Creation: Tue Dec 21 15:01:05 2010 by Log Std Casedhole 07122  
 Charted by: Depth in Feet scaled 1:240



1-11-2011  
 Perforated Interval  
 862.0 - 866.0 9 Perfs.  
 3 3/8" DP 23 Gr. T. ECG

Database File: cline2fa.db  
 Dataset Pathname: pass1a  
 Presentation Format: gr-n-ccl  
 Dataset Creation: Thu Apr 07 13:13:30 2011 by Log Std Casedhole 07122  
 Charted by: Depth in Feet scaled 1:240

**Cline F-2 Log Pass No.-2**



01-11-2011  
 Perforated Interval  
 862.0 - 866.0 9 Perfs.  
 3 3/8" DP 23 Gr. T. ECG

Bottom Of Casing