



DIGITAL LOG (785) 625-3858

Dual Induction Log

API No. 15-159-22645-00-00

Company: American Warrior, Inc.
 Well: Buckley #5-18
 Field: Chase-Silica
 County: Rice State: Kansas

Location: SE SW NE NW
 1174' FNL / 1968' FWL

Other Services: CNL / CDL MEL

Permanent Datum Ground Level Elevation 1738
 Log Measured From Kelly Bushing 8 Ft. Above Perm. Datum
 Drilling Measured From Kelly Bushing

Sec: 18 Twp: 19S Rge: 9W

Elevation: K.B. 1746
 D.F. 1738
 G.L. 1738

| | |
|------------------------|-------------|
| Date | 4/24/2011 |
| Run Number | One |
| Depth Driller | 3400 |
| Depth Logger | 3400 |
| Bottom Logged Interval | 3399 |
| Top Log Interval | 300 |
| Casing Driller | 8.625 @ 352 |
| Casing Logger | 344 |
| Bit Size | 7.875 |
| Type Fluid in Hole | Chemical |
| Salinity, ppm CL | 5900 |
| Density / Viscosity | 9.4 55 |
| pH / Fluid Loss | 10.5 6.8 |
| Source of Sample | Flowline |
| Rm @ Meas. Temp | 1.00 @ 60 |
| Rmf @ Meas. Temp | 0.75 @ 60 |
| Rmc @ Meas. Temp | 1.35 @ 60 |
| Source of Rmf / Rmc | Charts |
| Rm @ BHT | 0.54 @ 112 |
| Operating Rig Time | 2.5 Hours |
| Max Rec. Temp. F | 112 |
| Equipment Number | 17 |
| Location | Hays |
| Recorded By | R. Barnhart |
| Witnessed By | Bruce Ard |

<<< Fold Here >>>

All interpretations are opinions based on inferences from electrical or other measurements and we cannot and do not guarantee the accuracy or correctness of any interpretation, and we shall not, except in the case of gross or willful negligence on our part, be liable or responsible for any loss, costs, damages, or expenses incurred or sustained by anyone resulting from any interpretation made by any of our officers, agents or employees. These interpretations are also subject to our general terms and conditions set out in our current Price Schedule.

Comments

Thank you for using Log-Tech, Inc.
 (785) 625-3858

Chase, KS:
 4N, 1/2W, S into

Database File: c:\warrior\data\amwar_buckley #5-18\amhd.db
 Dataset Pathname: dil/amwmain
 Presentation Format: dil2in
 Dataset Creation: Sun Apr 24 21:50:59 2011
 Charted by: Depth in Feet scaled 1:600

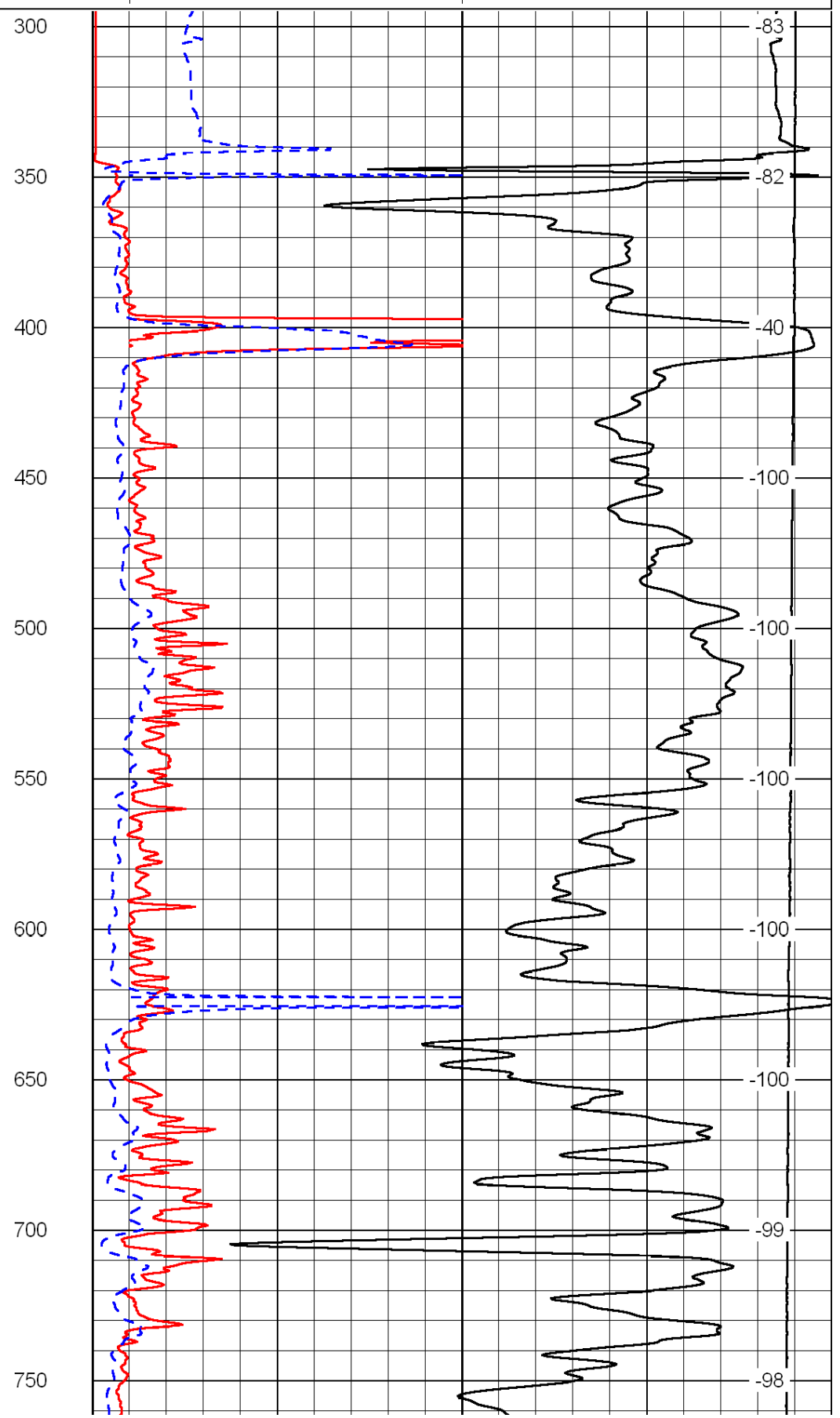
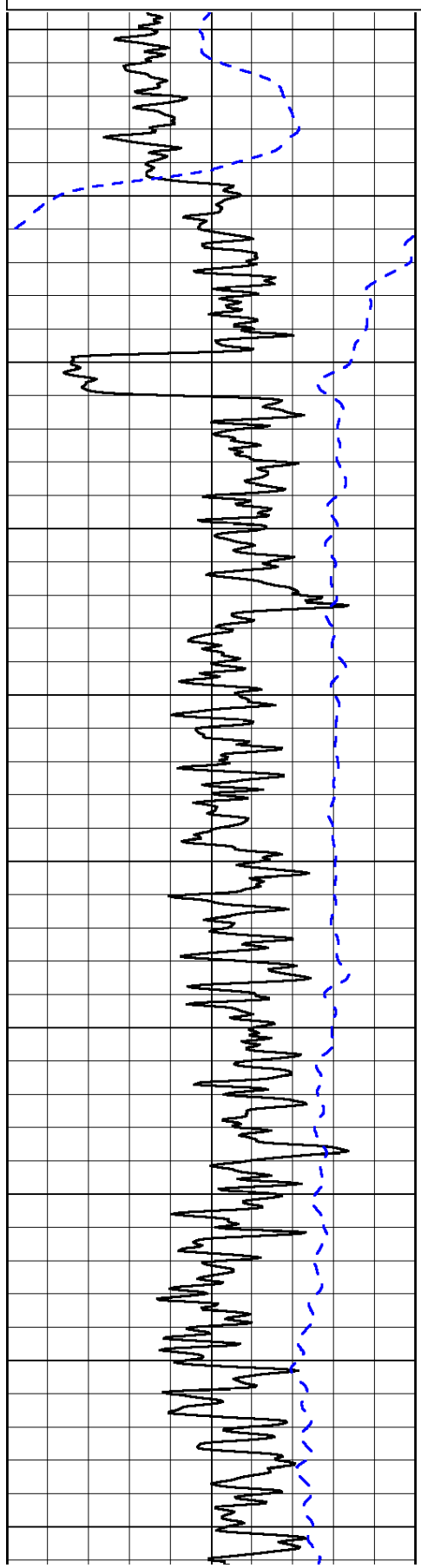
| | | |
|------|-----------|-----|
| 0 | Gamma Ray | 150 |
| -200 | SP (mV) | 0 |

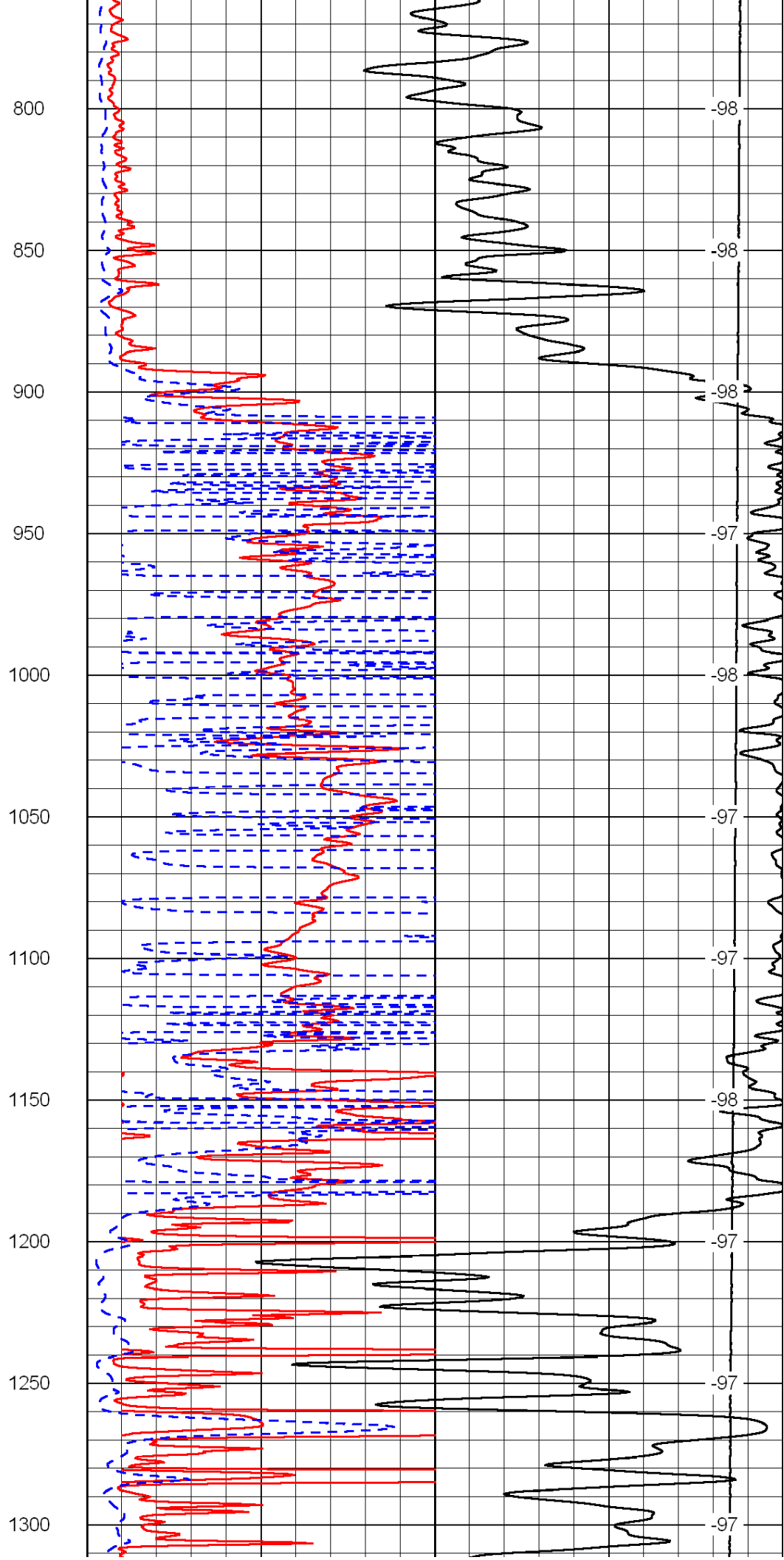
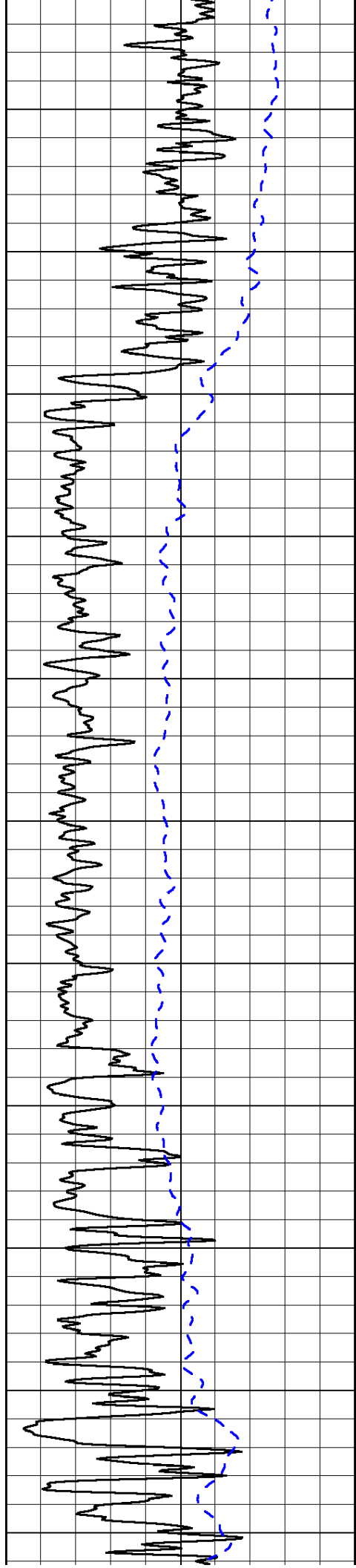
| | | |
|---|---------------------|----|
| 0 | Shallow Resistivity | 50 |
| 0 | Deep Resistivity | 50 |

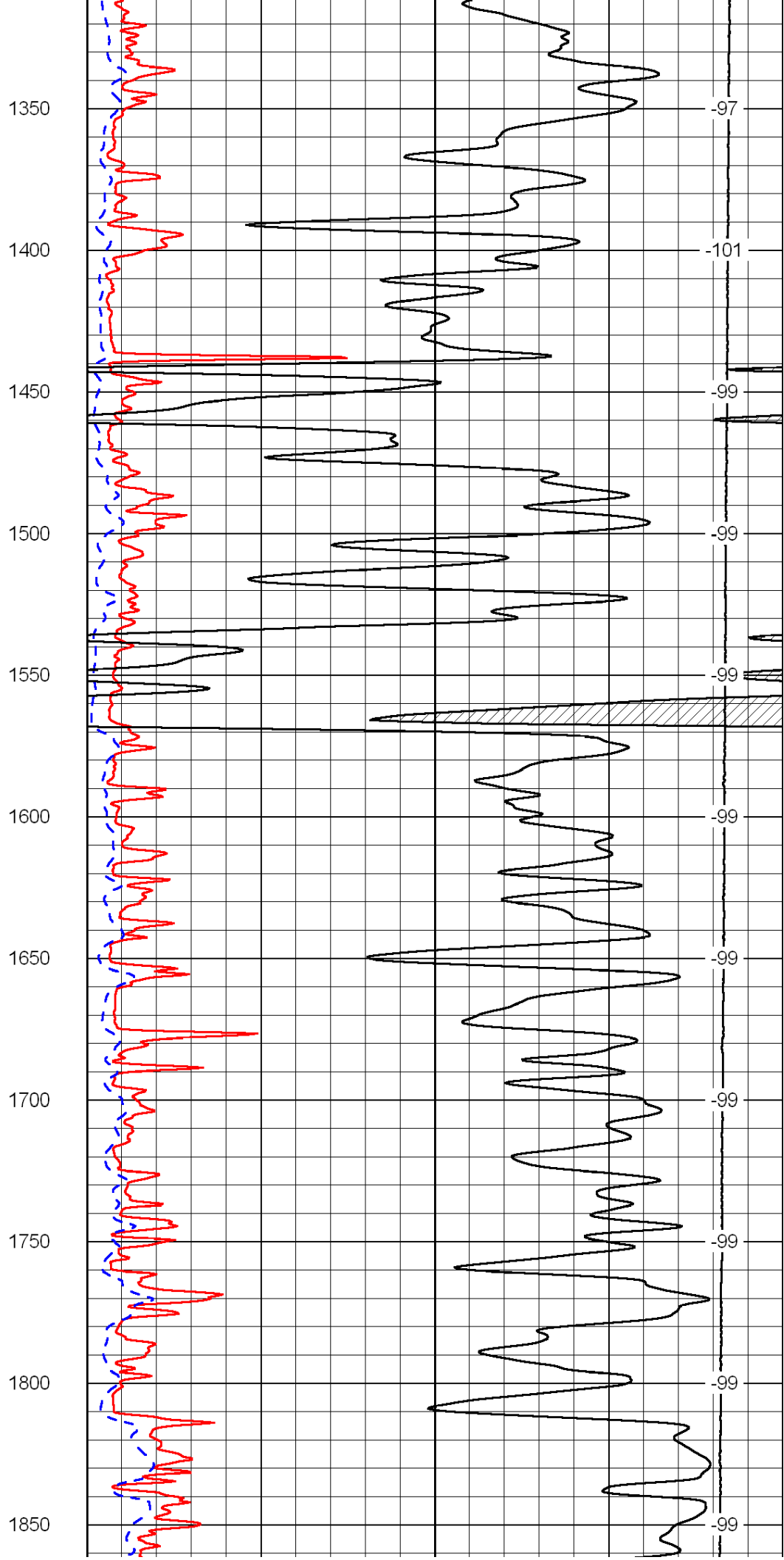
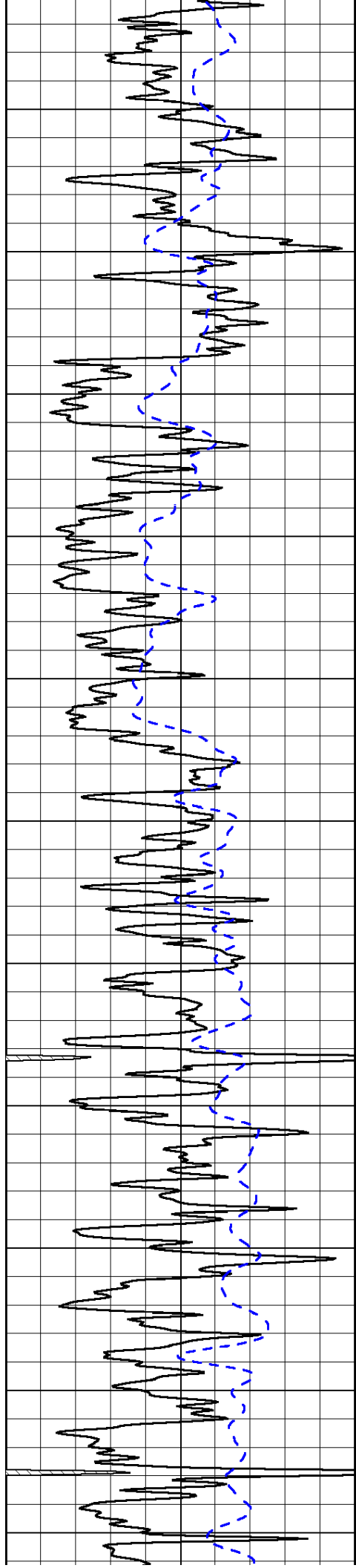
LSPD

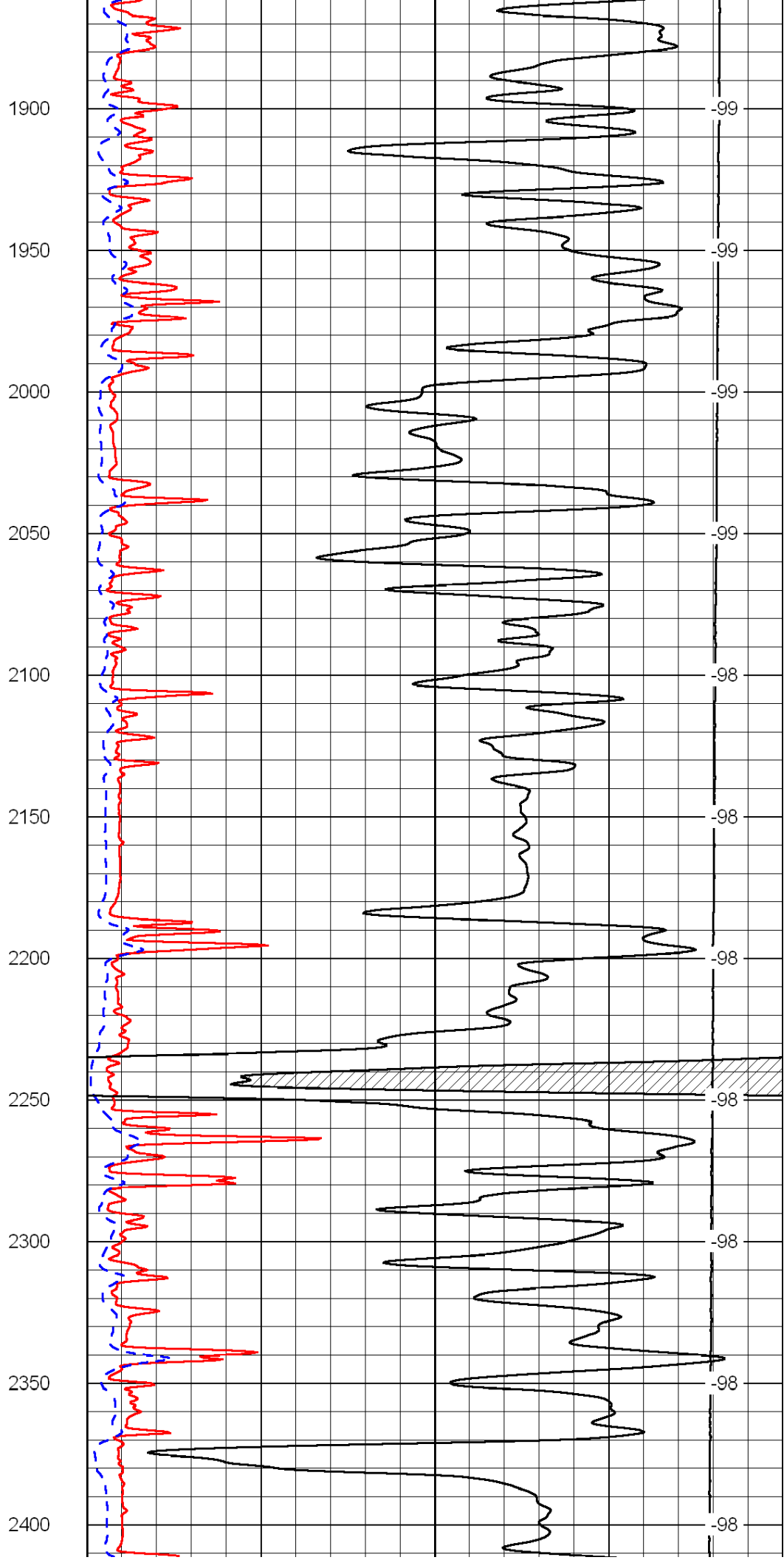
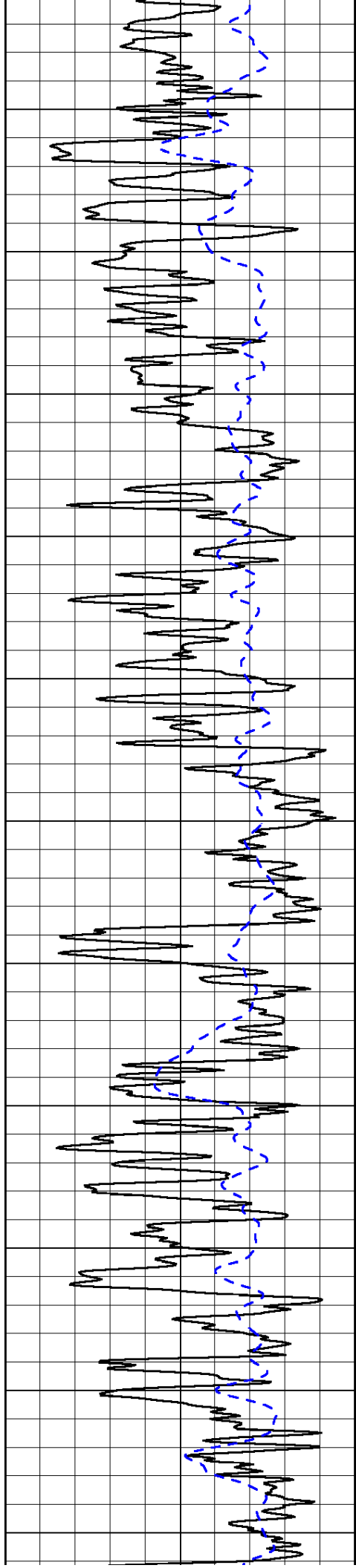
| | | |
|-------|--------------|---|
| 1000 | Conductivity | 0 |
| 15000 | Line Tension | 0 |

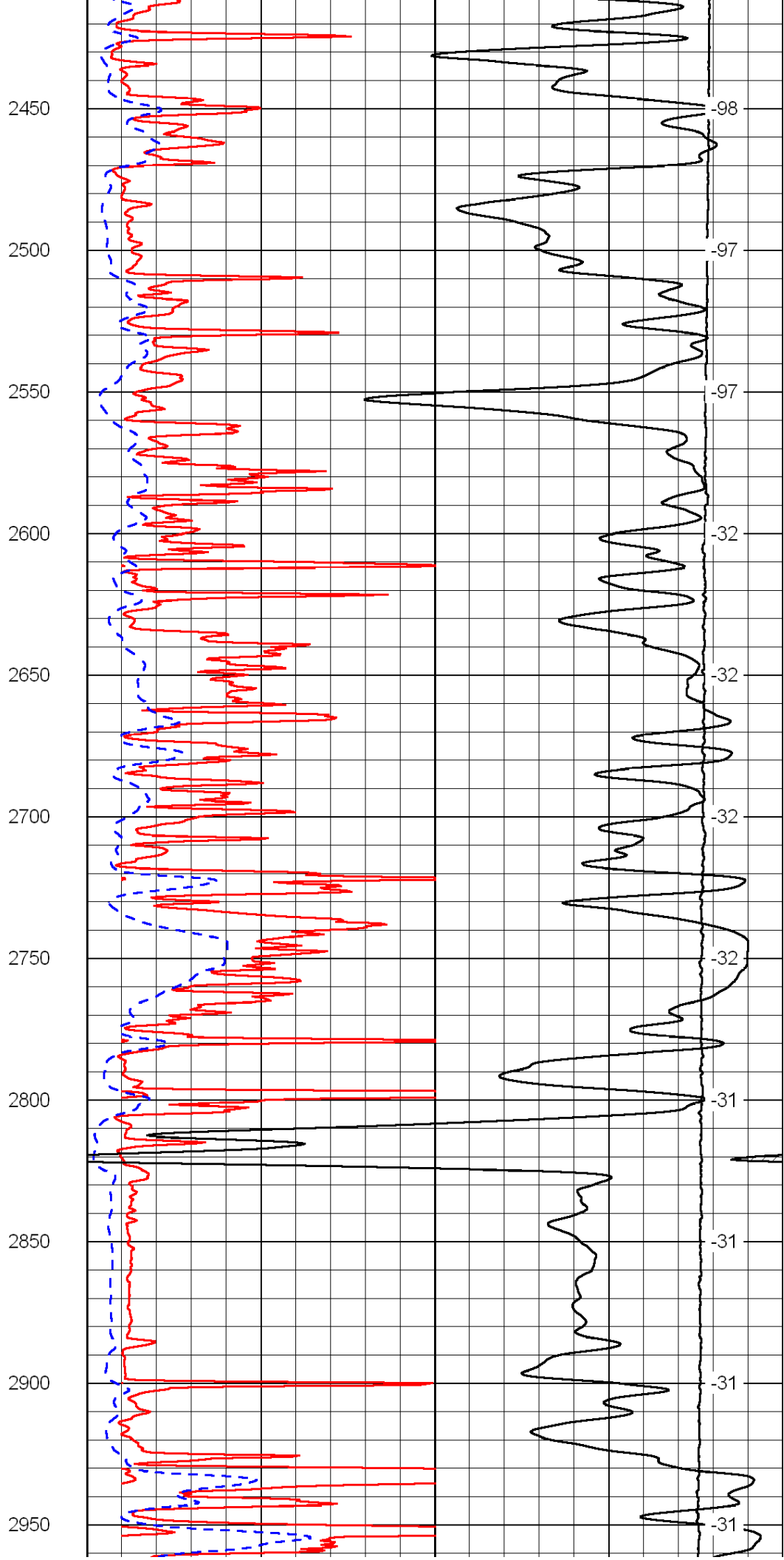
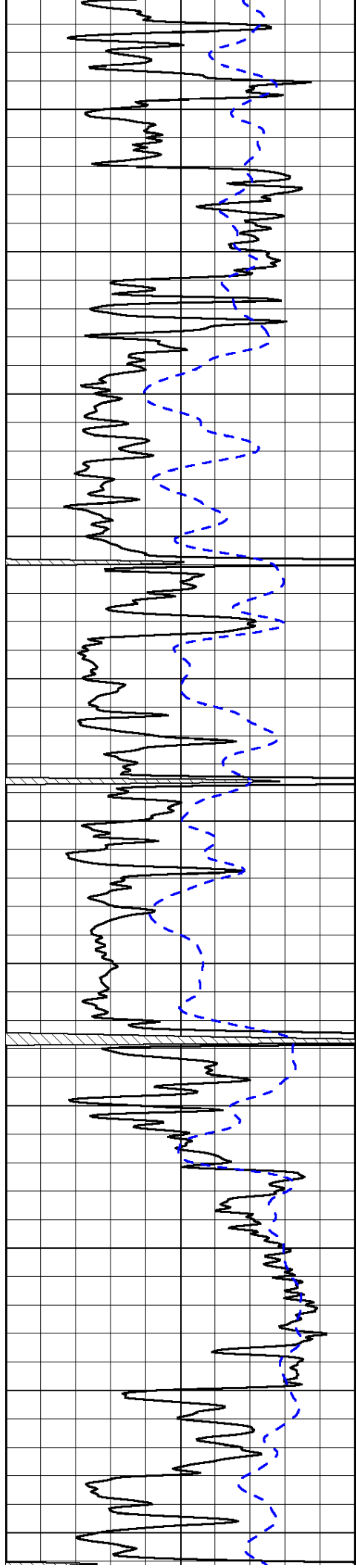
| | | |
|----|---------------------|-----|
| 50 | Shallow Resistivity | 500 |
| 50 | Deep Resistivity | 500 |

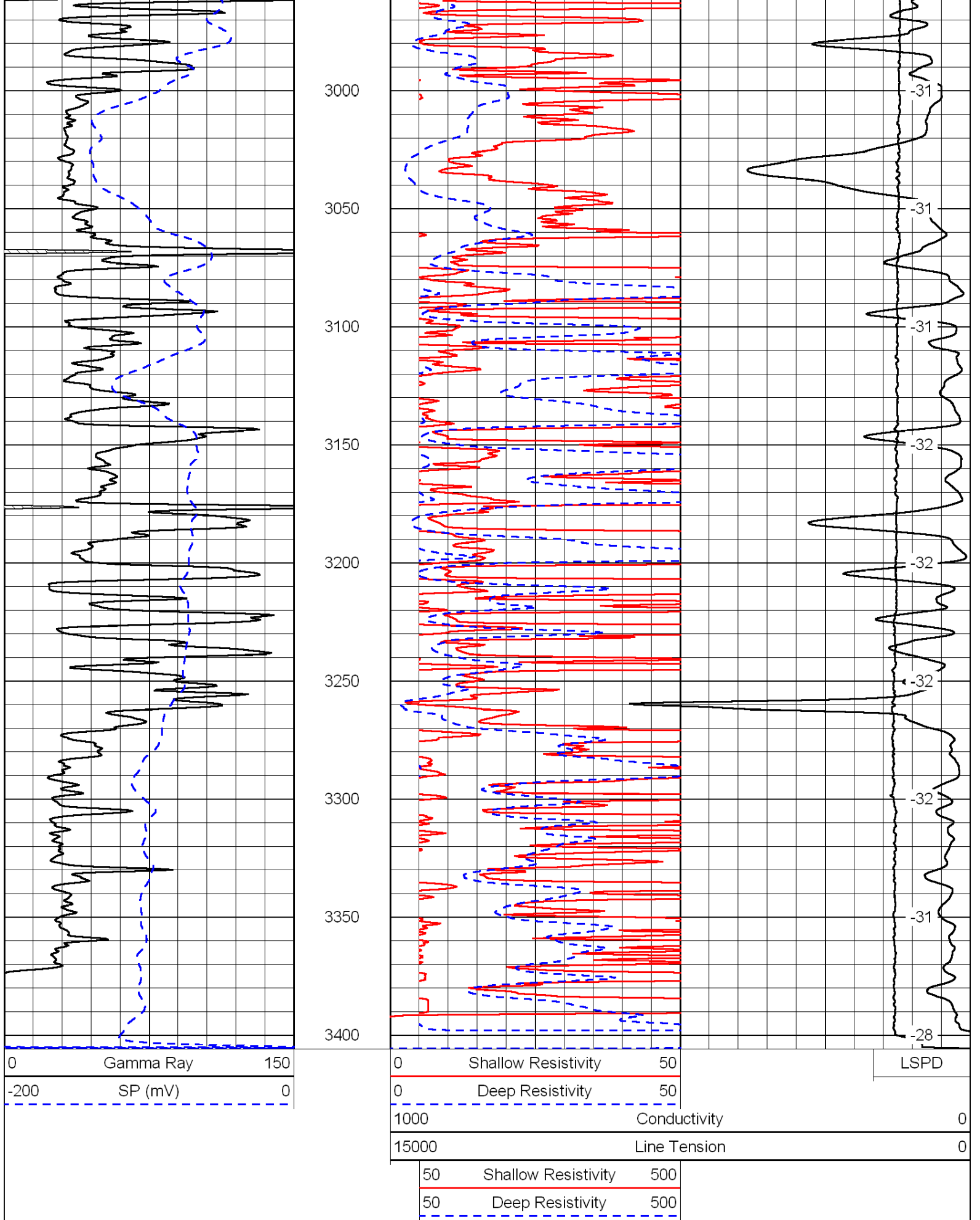










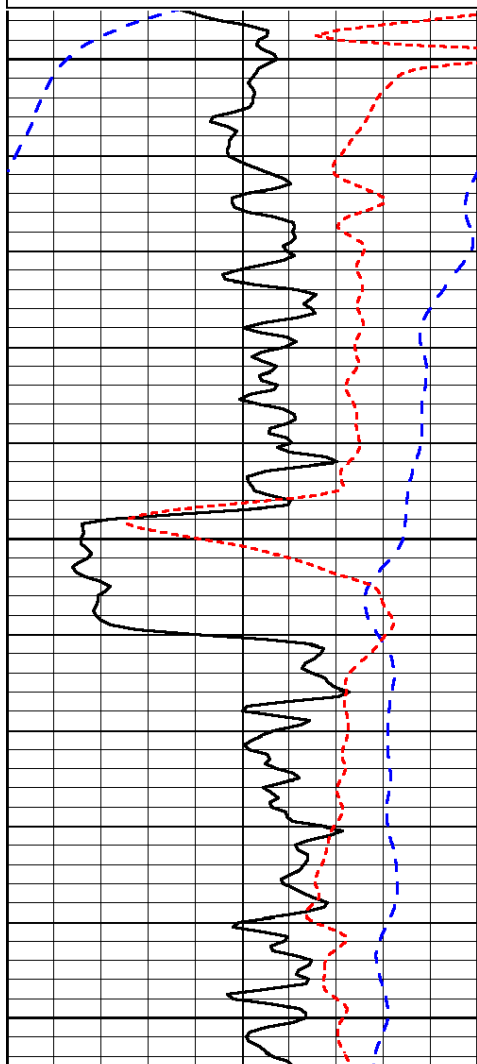


Presentation Format: dil
 Dataset Creation: Sun Apr 24 21:50:59 2011
 Charted by: Depth in Feet scaled 1:240

| | | |
|------|-----------|-----|
| 0 | Gamma Ray | 150 |
| -200 | SP (mV) | 0 |
| -160 | Rxo / Rt | 40 |

| | | |
|-------|---------------------|------|
| 0.2 | Deep Resistivity | 2000 |
| 0.2 | Medium Resistivity | 2000 |
| 0.2 | Shallow Resistivity | 2000 |
| 15000 | Line Tension | 0 |

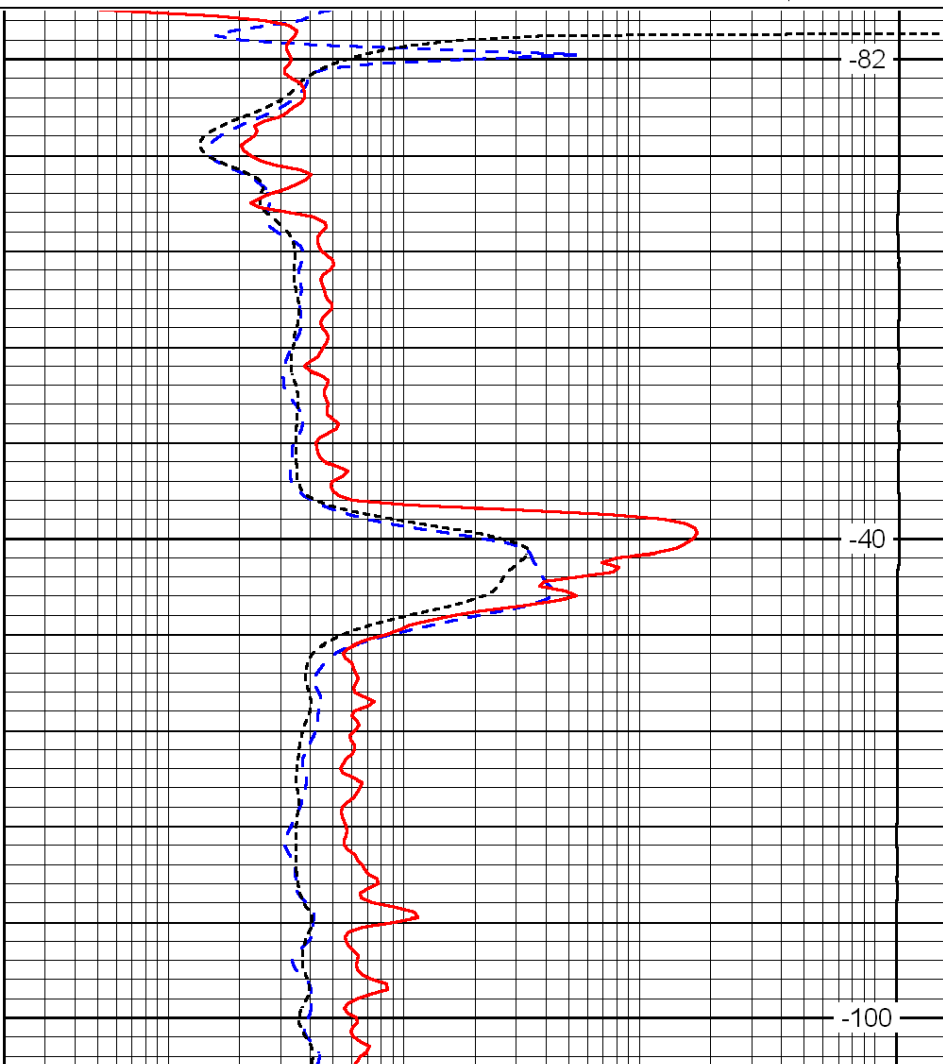
LSPD



350

400

450



-82

-40

-100

| | | |
|------|-----------|-----|
| 0 | Gamma Ray | 150 |
| -200 | SP (mV) | 0 |
| -160 | Rxo / Rt | 40 |

| | | |
|-------|---------------------|------|
| 0.2 | Deep Resistivity | 2000 |
| 0.2 | Medium Resistivity | 2000 |
| 0.2 | Shallow Resistivity | 2000 |
| 15000 | Line Tension | 0 |

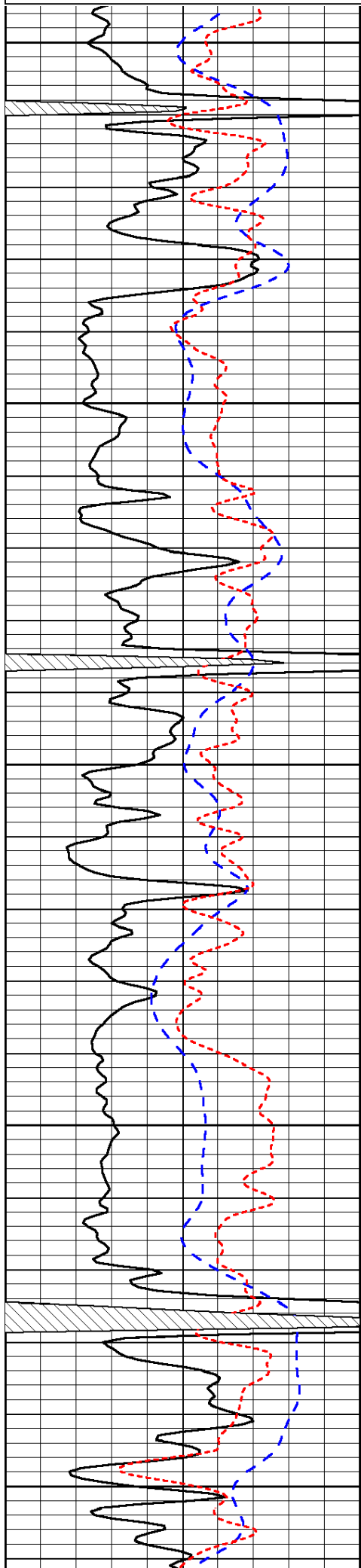
LSPD

Database File: c:\warrior\data\amwar_buckley #5-18\amhd.db
 Dataset Pathname: dil/amwmain
 Presentation Format: dil
 Dataset Creation: Sun Apr 24 21:50:59 2011
 Charted by: Depth in Feet scaled 1:240

| | | |
|------|-----------|-----|
| 0 | Gamma Ray | 150 |
| -200 | SP (mV) | 0 |
| -160 | Rxo / Rt | 40 |

| | | |
|-------|---------------------|------|
| 0.2 | Deep Resistivity | 2000 |
| 0.2 | Medium Resistivity | 2000 |
| 0.2 | Shallow Resistivity | 2000 |
| 15000 | Line Tension | 0 |

LSPD



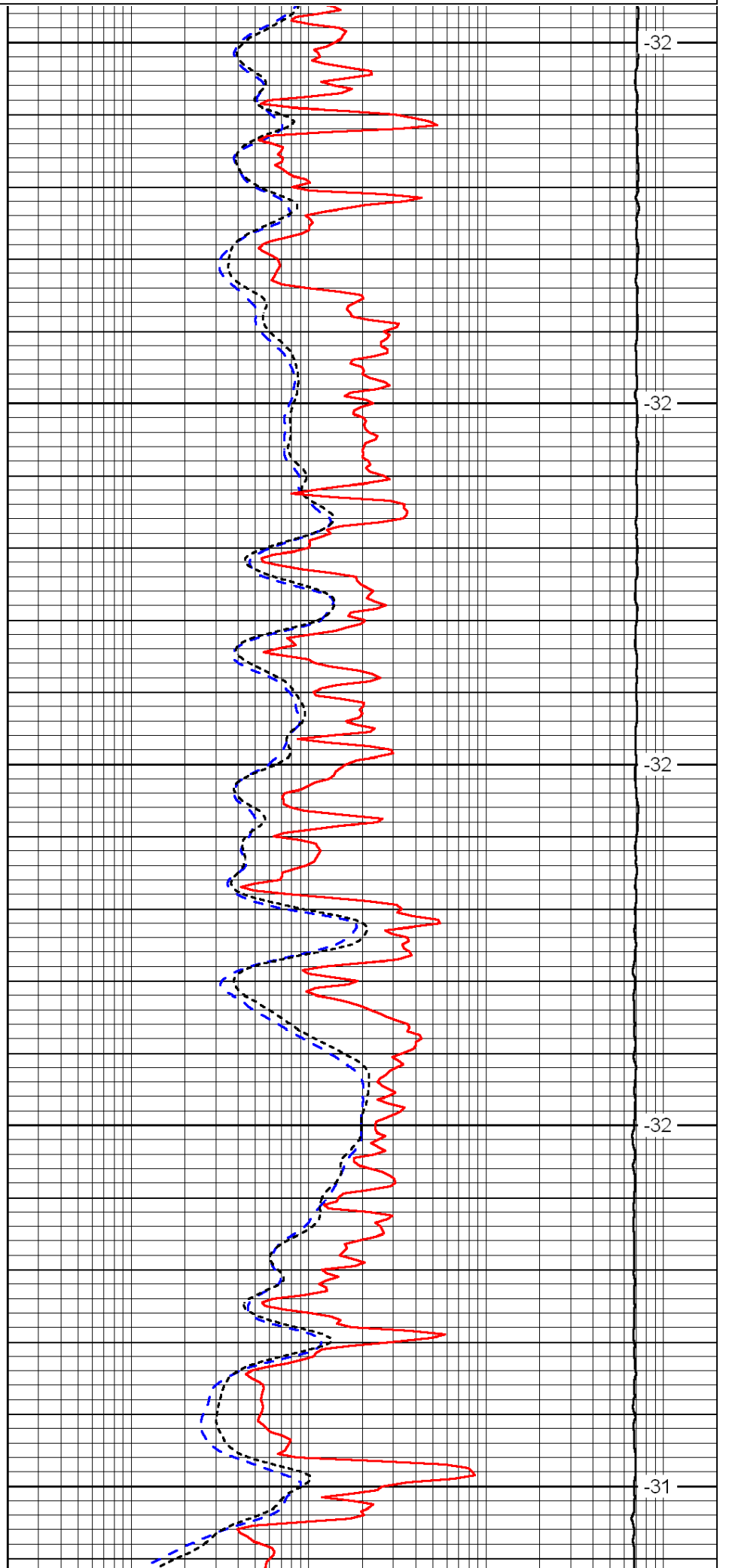
2600

2650

2700

2750

2800



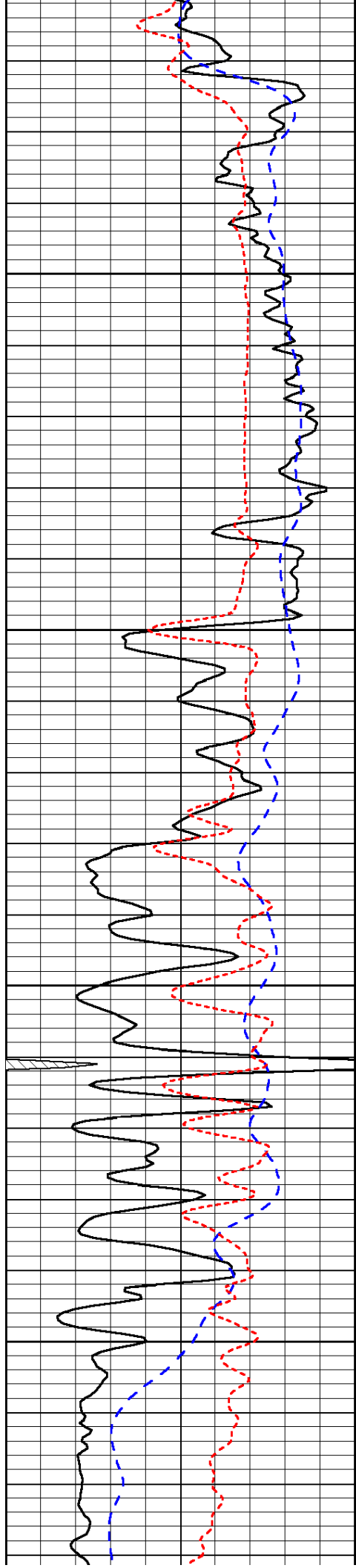
-32

-32

-32

-32

-31

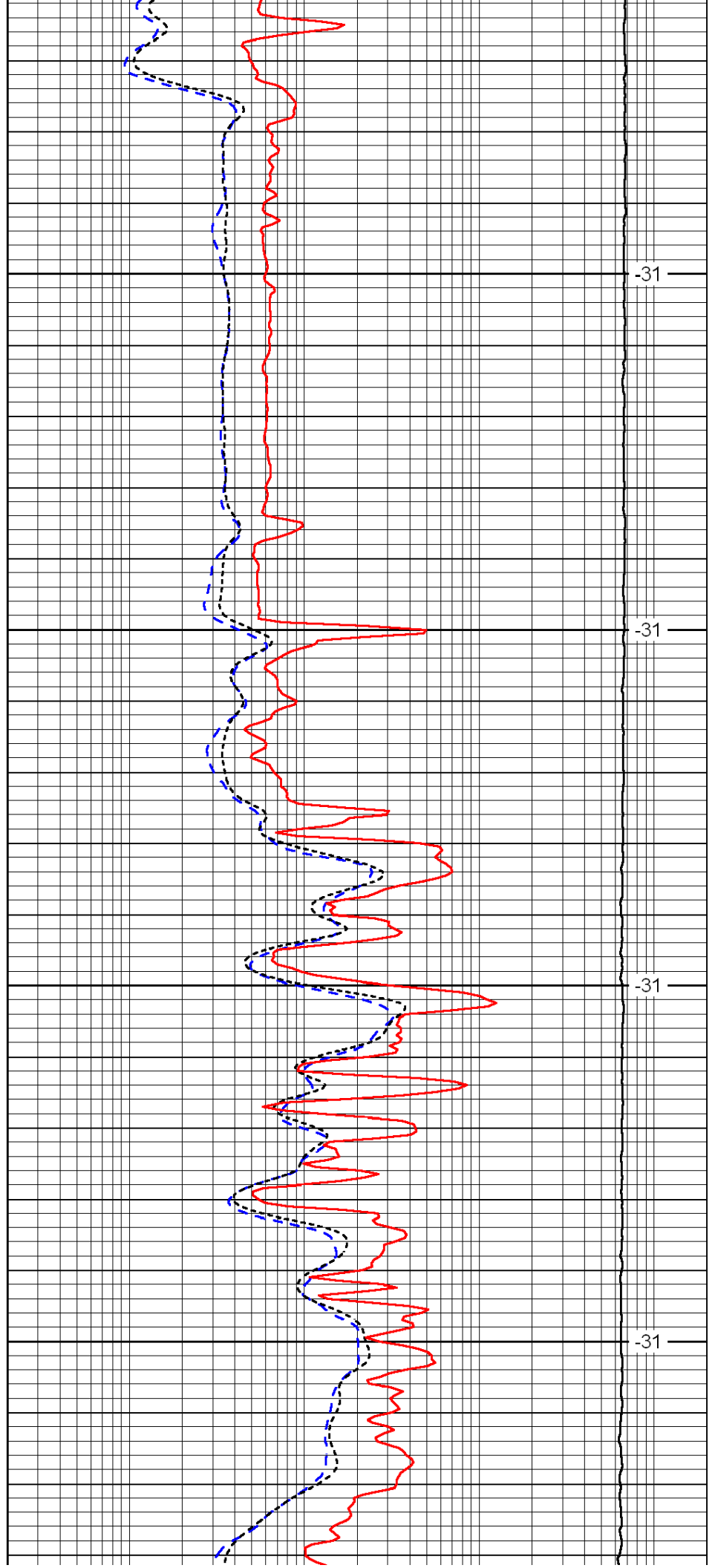


2850

2900

2950

3000

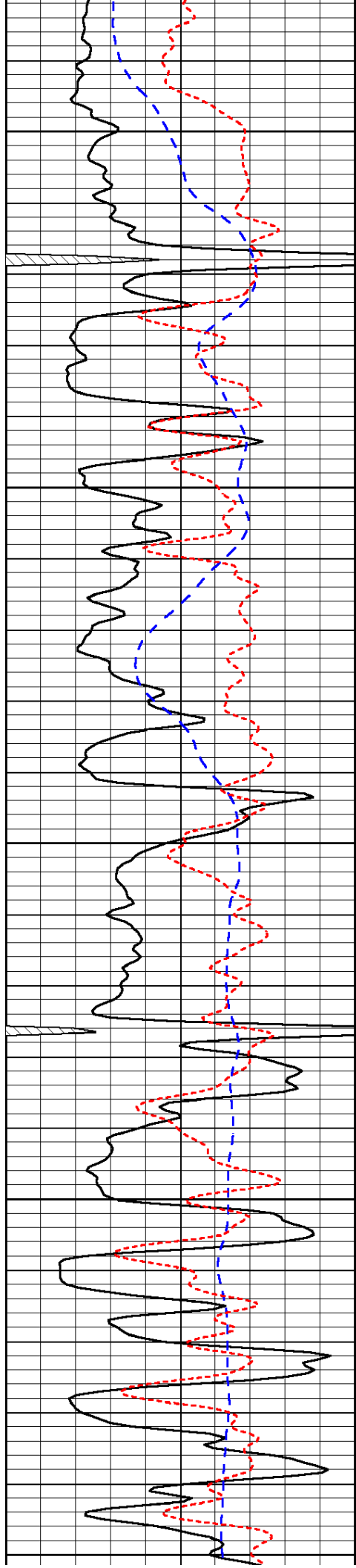


-31

-31

-31

-31



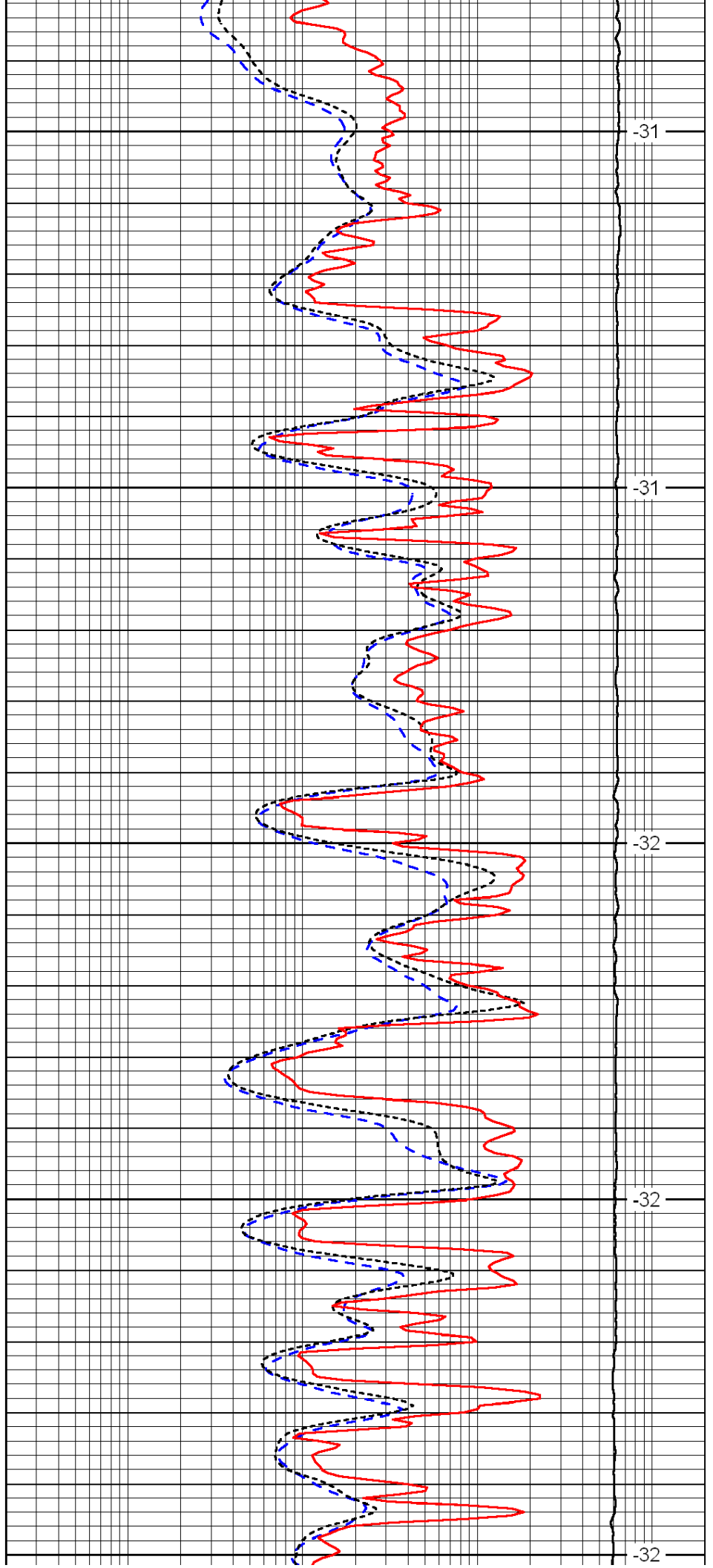
3050

3100

3150

3200

3250



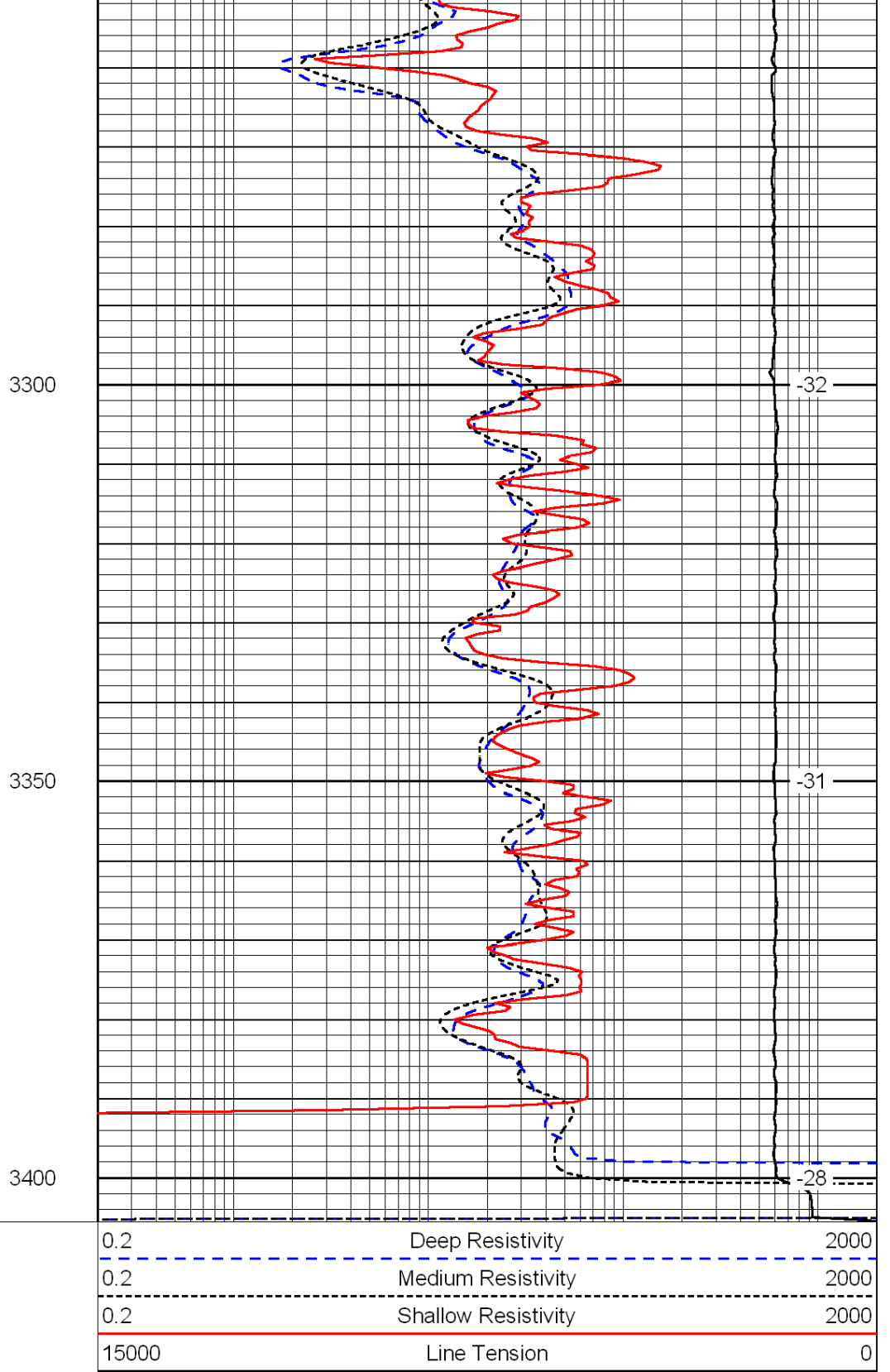
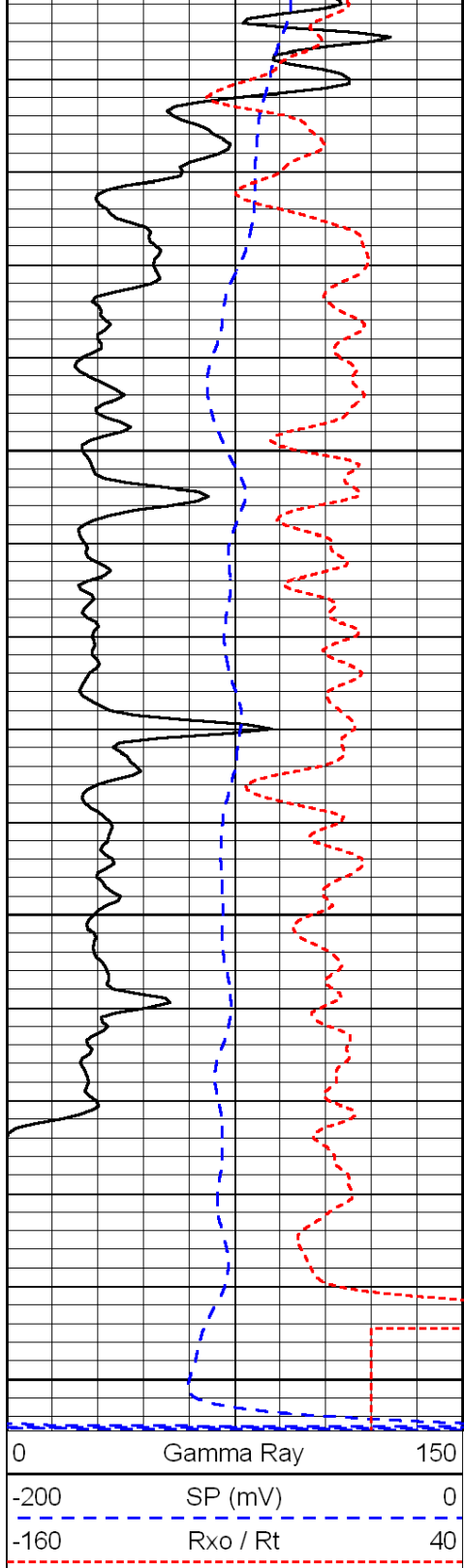
-31

-31

-32

-32

-32



LSPD