



Microresistivity Log

DIGITAL LOG (785) 625-3858

API No. 15-159-22645-00-00	Company American Warrior, Inc.	Well Buckley #5-18
	Field Chase-Silica	
	County Rice	State Kansas
	Location SE SW NE NW 1174' FNL / 1968' FWL	Other Services CNL / CDL DIL
	Sec: 18 Twp: 19S Rge: 9W	Elevation K.B. 1746 D.F. 1738 G.L. 1738
Permanent Datum Log Measured From Drilling Measured From	Ground Level Kelly Bushing From Kelly Bushing	Elevation 1738 8 Ft. Above Perm. Datum

Date	4/24/2011
Run Number	Two
Depth Driller	3400
Depth Logger	3400
Bottom Logged Interval	3399
Top Log Interval	2600
Casing Driller	8.625 @ 352
Casing Logger	344
Bit Size	7.875
Type Fluid in Hole	Chemical
Salinity, ppm CL	5900
Density / Viscosity	9.4 55
pH / Fluid Loss	10.5 6.8
Source of Sample	Flowline
Rm @ Meas. Temp	1.00 @ 60
Rmf @ Meas. Temp	0.75 @ 60
Rmc @ Meas. Temp	1.35 @ 60
Source of Rmf / Rmc	Charts
Rm @ BHT	0.54 @ 112
Operating Rig Time	2.5 Hours
Max Rec. Temp. F	112
Equipment Number	17
Location	Hays
Recorded By	R. Barnhart
Witnessed By	Bruce Ard

<<< Fold Here >>>

All interpretations are opinions based on inferences from electrical or other measurements and we cannot and do not guarantee the accuracy or correctness of any interpretation, and we shall not, except in the case of gross or willful negligence on our part, be liable or responsible for any loss, costs, damages, or expenses incurred or sustained by anyone resulting from any interpretation made by any of our officers, agents or employees. These interpretations are also subject to our general terms and conditions set out in our current Price Schedule.

Comments

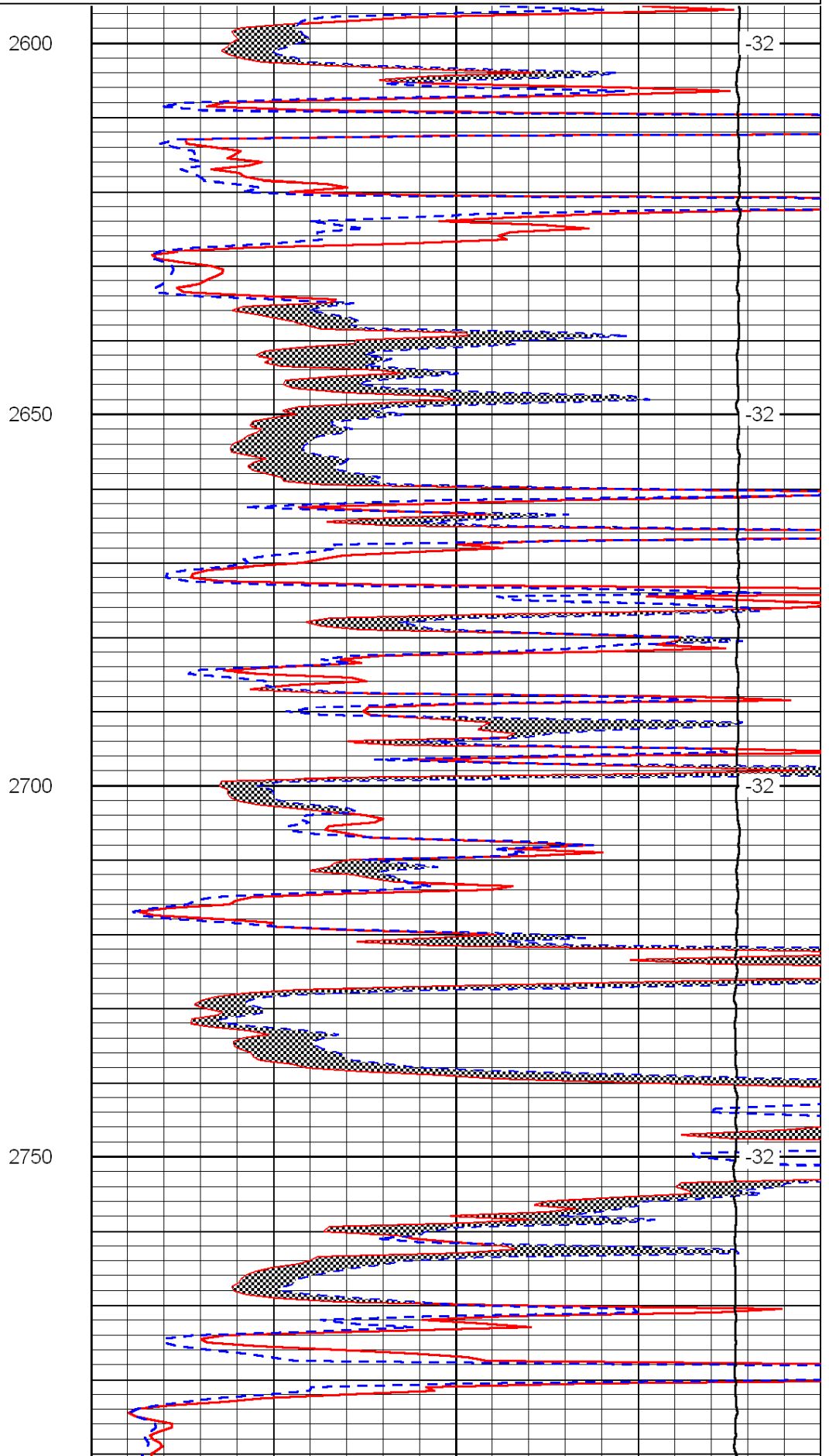
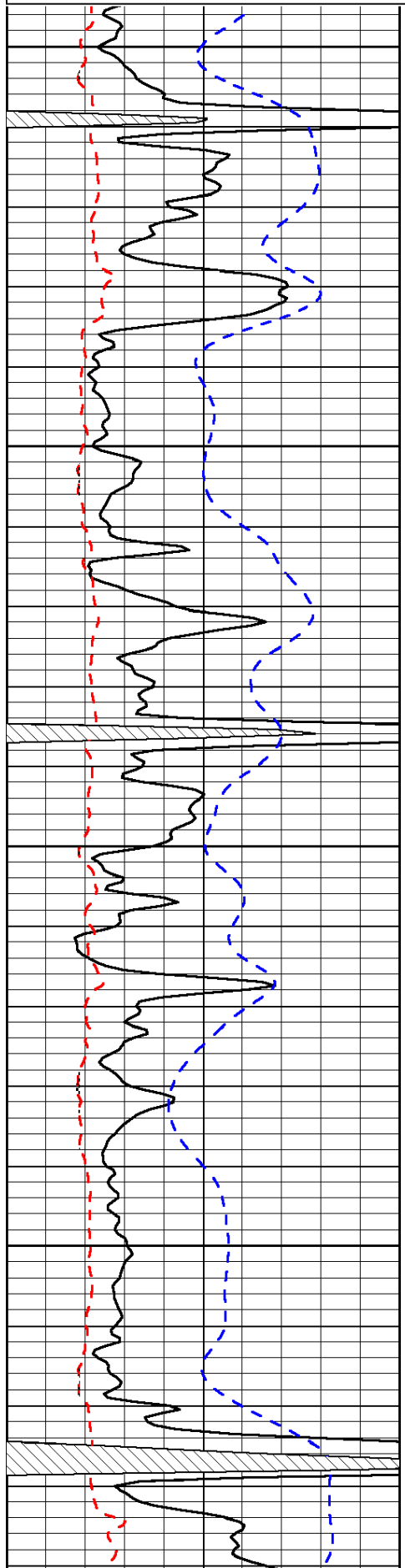
Thank you for using Log-Tech, Inc.
(785) 625-3858

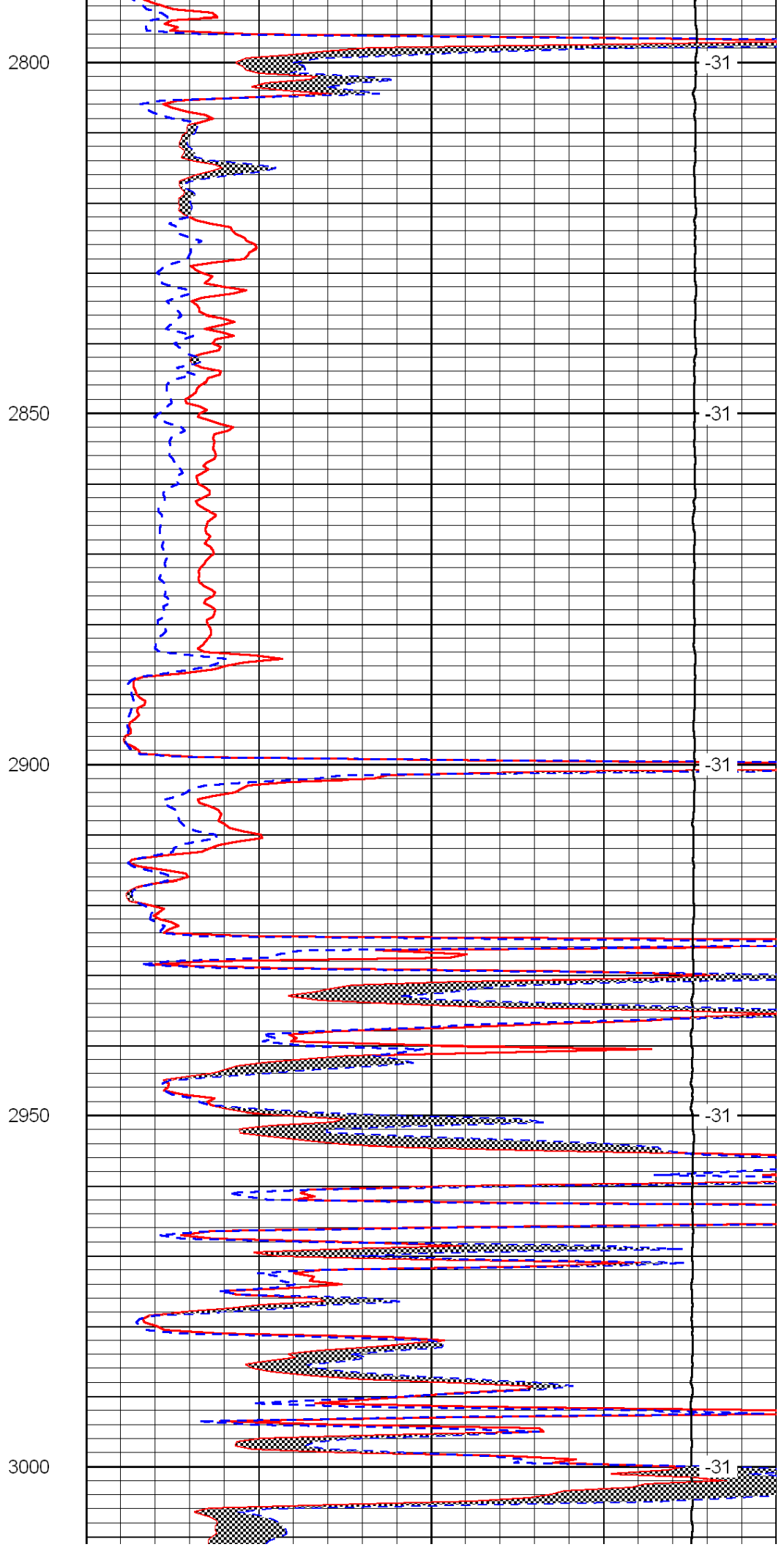
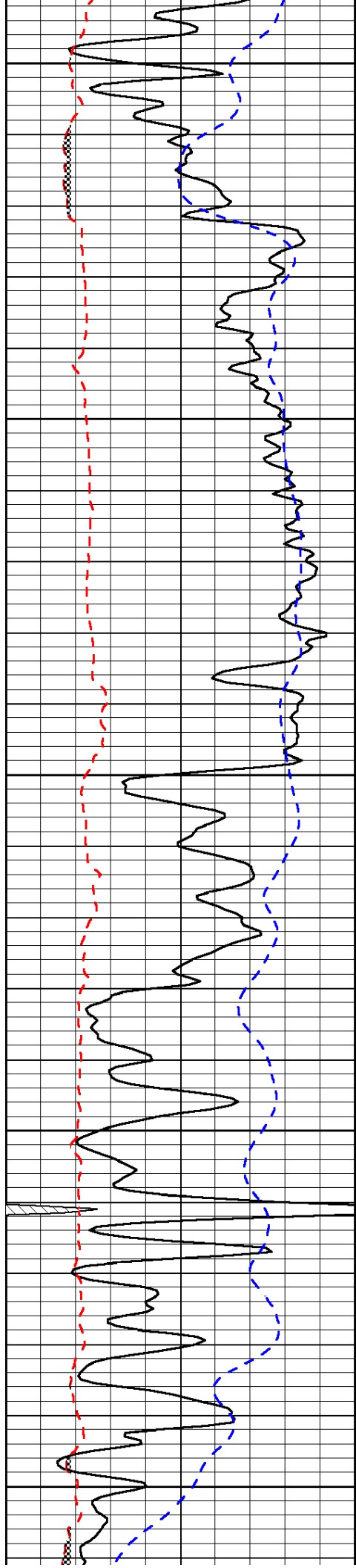
Chase, KS:
4N, 1/2W, S into

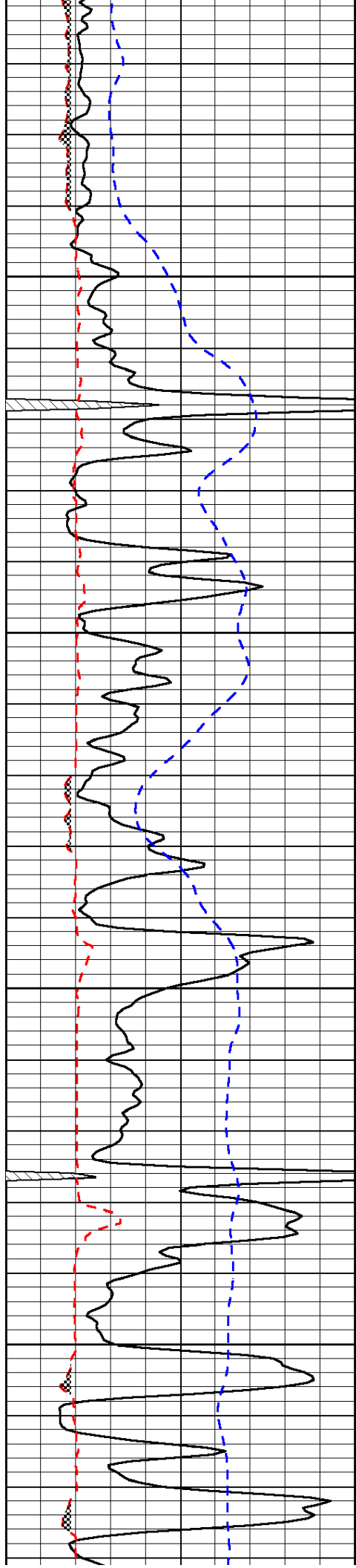
0	Gamma Ray	150
6	Micro Log Caliper (GAPI)	16
-200	SP (mV)	0

0	Micro Inverse 1 X 1	40
0	Micro Normal 2"	40
15000	Line Weight	0

LSPD





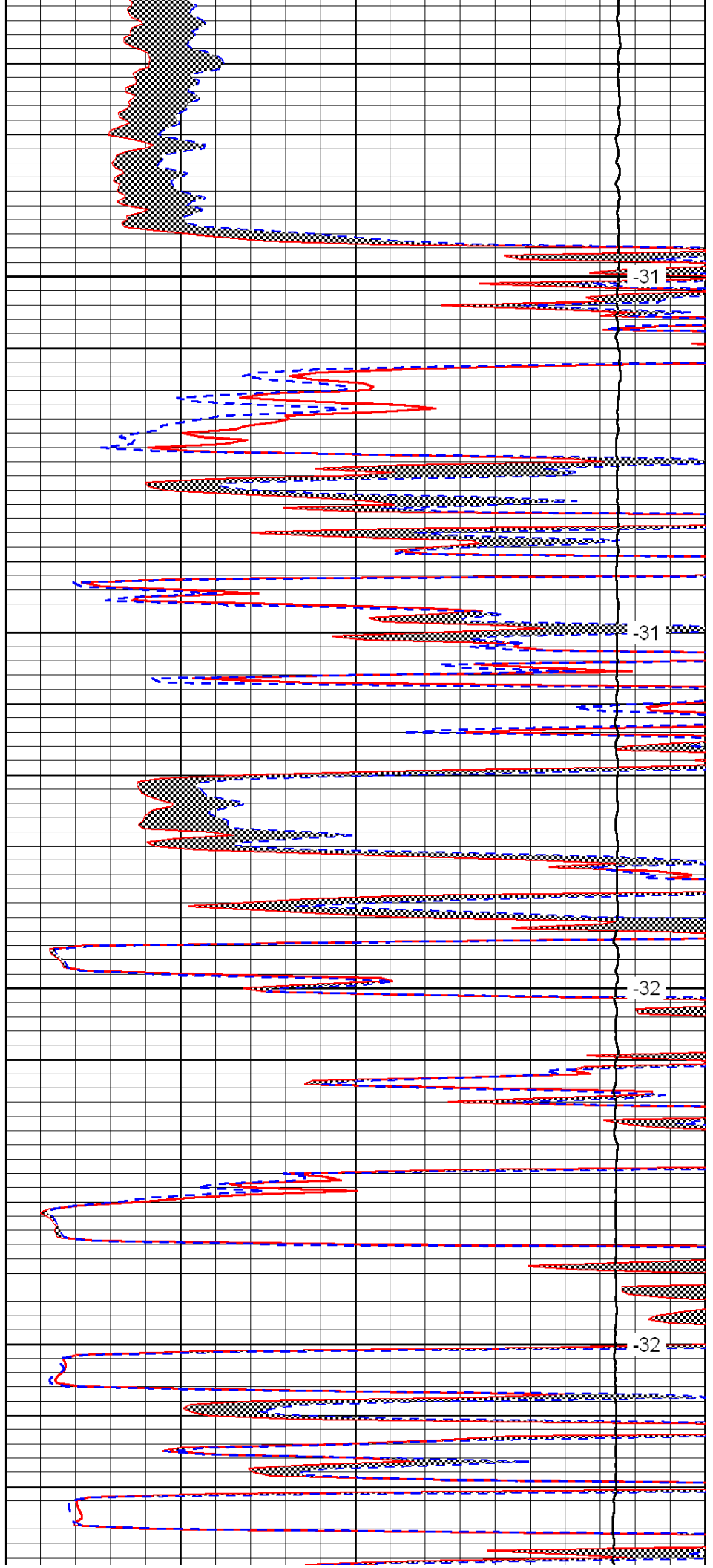


3050

3100

3150

3200

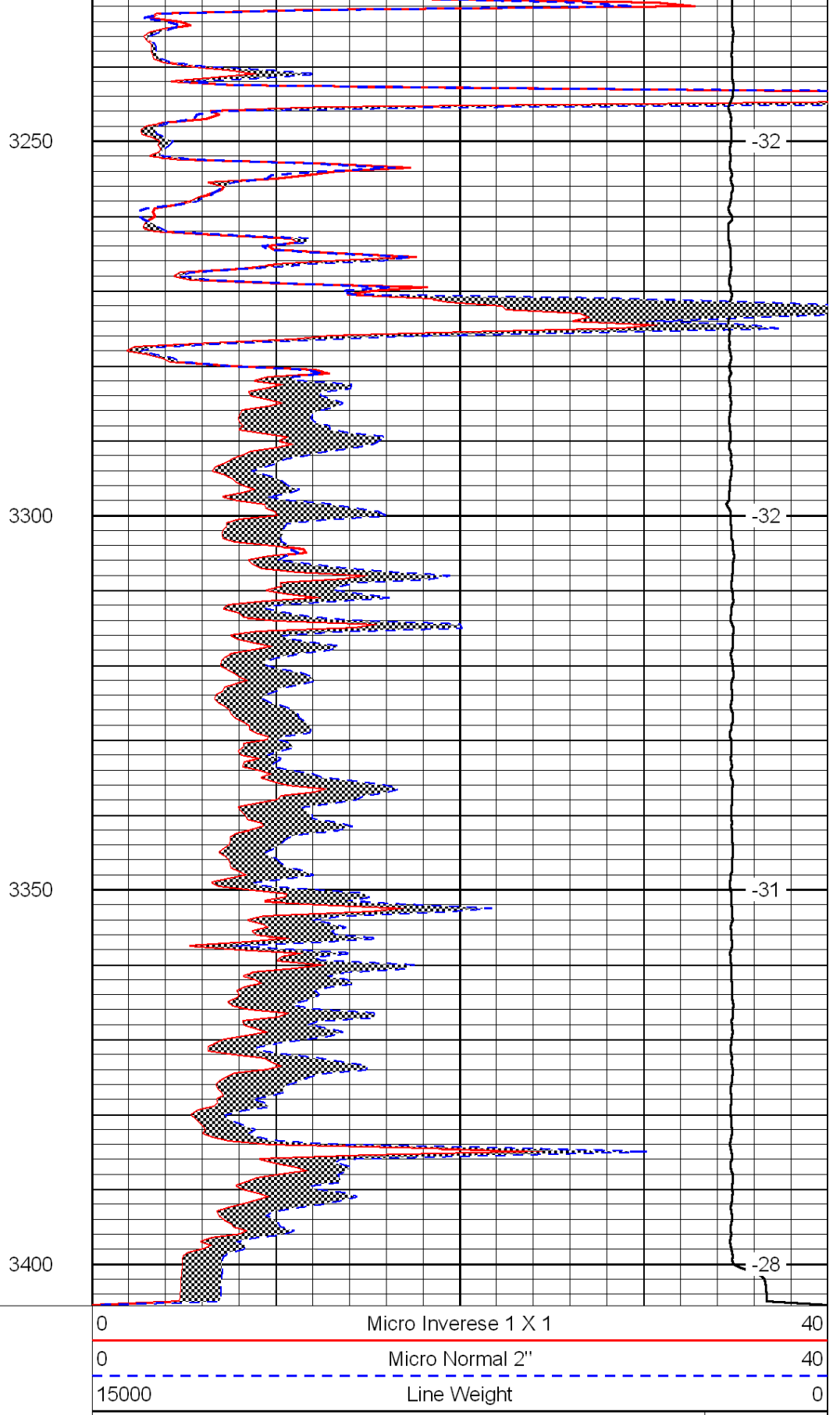
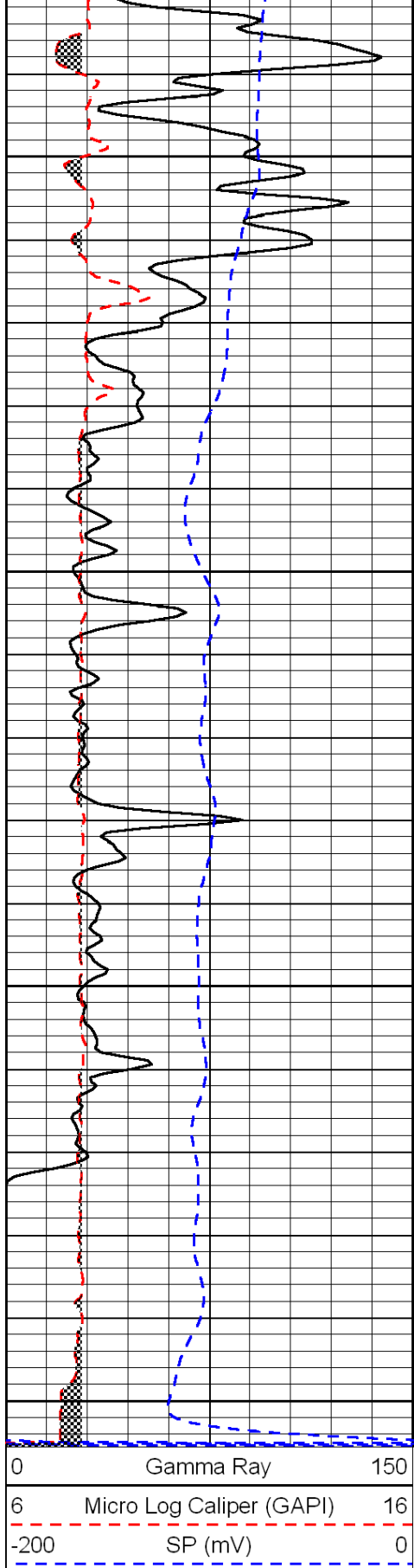


-31

-31

-32

-32



LSPD