



MIDWEST SURVEYS
 LOGGING - PERFORATING - CONSULTING SERVICES
 P.O. Box 68, Osawatomie, KS 66064
 913 / 755 - 2128

GAMMA RAY / NEUTRON / CCL

File No.

Company **Energex Kansas, Inc.**

Well **Needham No. BSP-3**

Field **Paola / Rantoul**

County **Franklin** State **Kansas**

Location **4600 FSL & 5070' FEL**

Sec. **17** Twp. **18S** Rge. **21E**

Permanent Datum **GL** Elevation **NA**

Log Measured From **GL** K.B. **NA**

Drilling Measured From **GL** D.F. **NA**

Date **3-03-2011** Elevation **GL NA**

Run Number **One**

Depth Logger **657.0**

Bottom Logged Interval **655.0**

Top Log Interval **20.0**

Fluid Level **Full**

Type Fluid **Water**

Density / Viscosity **NA**

Salinity - PFM Cl **NA**

Max. Recorded Temp **NA**

Estimated Cement Top **0.0**

Equipment No. **104** Location **Osawatomie**

Recorded By **Gary Winkisch**

Witnessed By **Jay Schindler**

BOREHOLE RECORD				CASINGS RECORD			
Run No.	BIT	FROM	TO	SIZE	WGT.	FROM	TO
One	8.625"	0.0	20.0	6.50"		0.0	20.0
Two	6.25"	20.0	690.0	2.875"		0.0	690.0

<<< Fold Here >>>

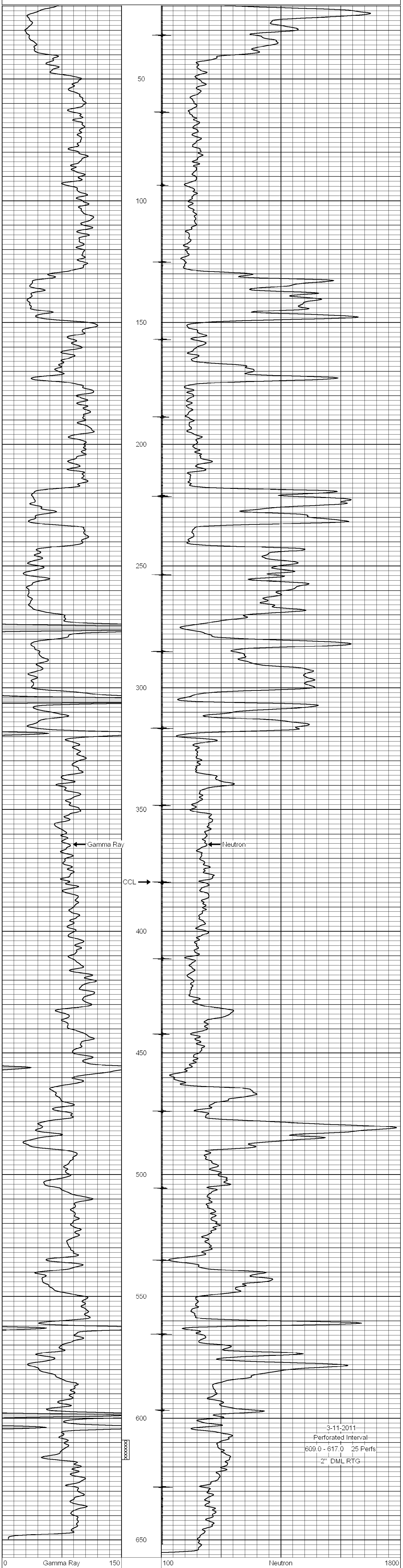
All interpretations are opinions based on inferences from electrical or other measurements and we cannot and do not guarantee the accuracy or correctness of any interpretation, and we shall not, except in the case of gross or willful negligence on our part, be liable or responsible for any loss, costs, damages, or expenses incurred or sustained by anyone resulting from any interpretation made by any of our officers, agents or employees. These interpretations are also subject to our general terms and conditions set out in our current Price Schedule.

Comments

Drilling Contractor :
JTC Oil, Inc.

Database File: ndhm3bsp.db
 Dataset Pathname: pass1
 Presentation Format: gr-n-ccl
 Dataset Creation: Thu Mar 03 08:46:04 2011 by Log Warrior Version 6.6
 Charted by: Depth in Feet scaled 1:240

0	Gamma Ray	150	100	Neutron	1800
150	Gamma Ray	300			



3-11-2011
 Perforated Interval
 609.0 - 617.0 25 Perfs
 2" DML RTG

0	Gamma Ray	150	100	Neutron	1800
150	Gamma Ray	300			