



Pioneer Energy Services

Dual Induction Log

15-057-20853-00-00

API No.

Company **Berexco, LLC**

Well **Shelor #1-34**

Field **Wildcat**

County **Ford**

State

Kansas

Location **1233' FSL & 1943' FWL**

Sec: **34**

Twp: **29S**

Rge: **24W**

Other Services
CNL/CDL
MEL

Permanent Datum **Ground Level**

Log Measured From **Kelly Bushing**

Elevation **K.B. 2601**

Drilling Measured From **Kelly Bushing**

13 Ft. Above Perm. Datum

D.F. **2588**

Date **11/19/2012**

Run Number **One**

Depth Driller **5500**

Depth Logger **5502**

Bottom Logged Interval **5501**

Top Log Interval **650**

Casing Driller **8.625 @ 690**

Casing Logger **686**

Bit Size **7.875**

Type Fluid in Hole **Chemical**

Salinity, ppm CL **14800**

Density / Viscosity **9.5 49**

pH / Fluid Loss **9.5 17.2**

Source of Sample **Flowline**

Rm @ Meas. Temp **0.24 @ 58**

Rmf @ Meas. Temp **0.18 @ 58**

Rmc @ Meas. Temp **0.32 @ 58**

Source of Rmf / Rmc **Charts**

Rm @ BHT **0.10 @ 133**

Operating Rig Time **5 Hours**

Max Rec. Temp. F **133**

Equipment Number **91**

Location **Hays**

Recorded By **D. Schmidt**

Witnessed By **David Gould**

<<< Fold Here >>>

All interpretations are opinions based on inferences from electrical or other measurements and we cannot and do not guarantee the accuracy or correctness of any interpretation, and we shall not, except in the case of gross or willful negligence on our part, be liable or responsible for any loss, costs, damages, or expenses incurred or sustained by anyone resulting from any interpretation made by any of our officers, agents or employees. These interpretations are also subject to our general terms and conditions set out in our current Price Schedule.

Comments

Thank you for using Log-Tech, Inc.
(785) 625-3858

Bloom,
3 West to Rd 115, 1/4 North,
East into

Database File: berexco_11192012hd.db
Dataset Pathname: dil/brxstack
Presentation Format: dil2in
Dataset Creation: Tue Nov 20 00:52:04 2012
Charted by: Depth in Feet scaled 1:600

0 Gamma Ray 150
-200 SP 0

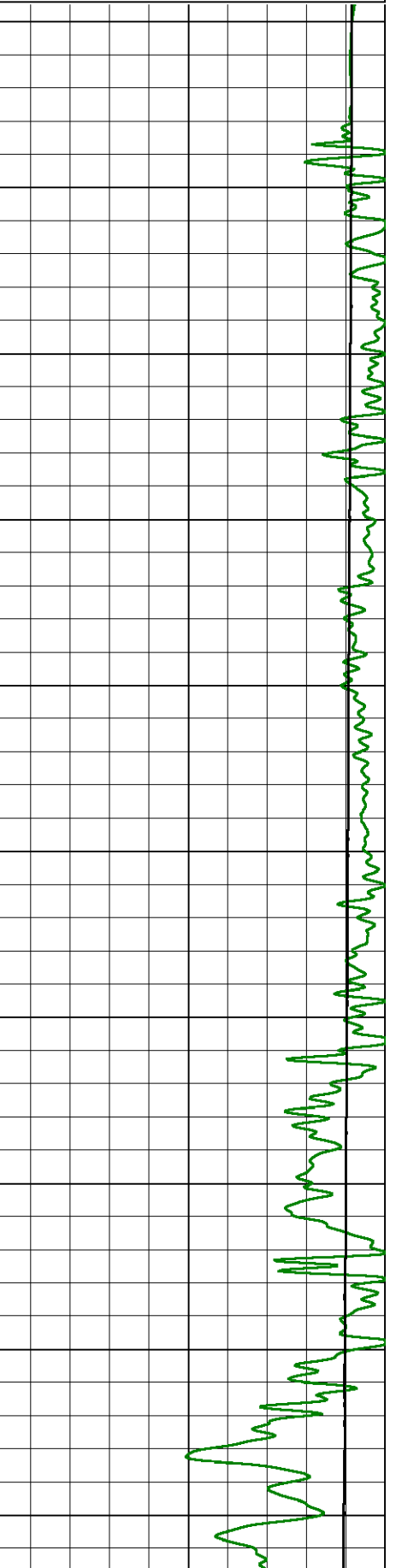
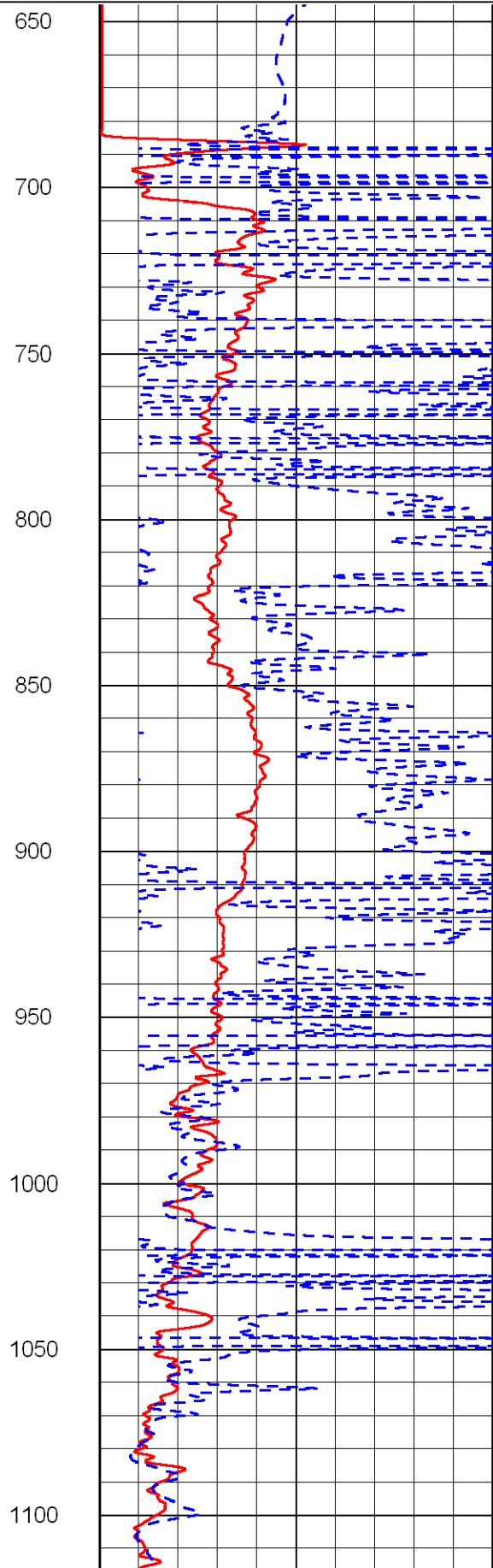
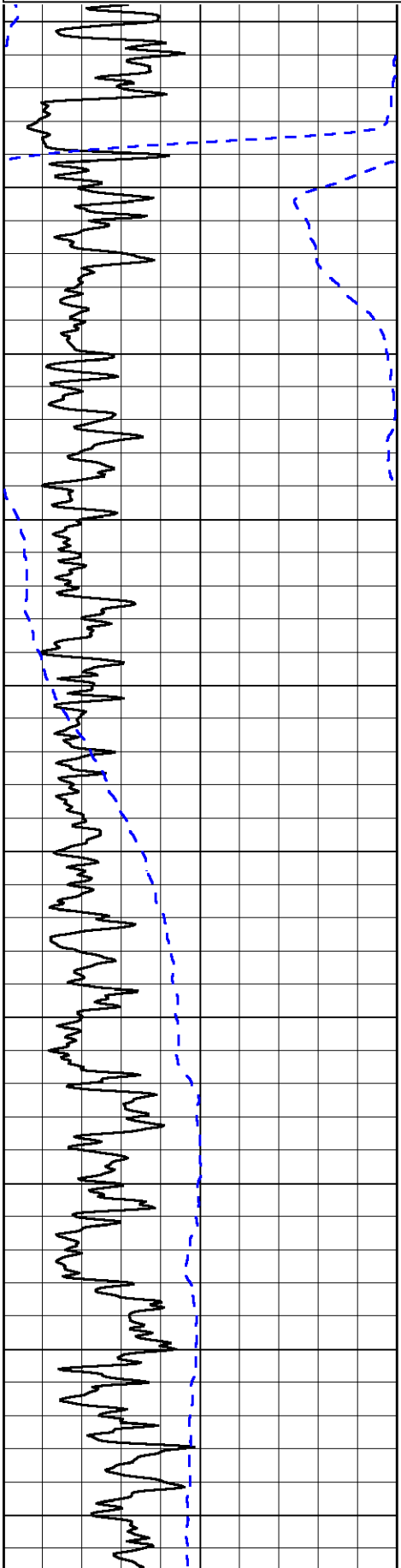
0 Shallow Resistivity 50
0 Deep Resistivity 50

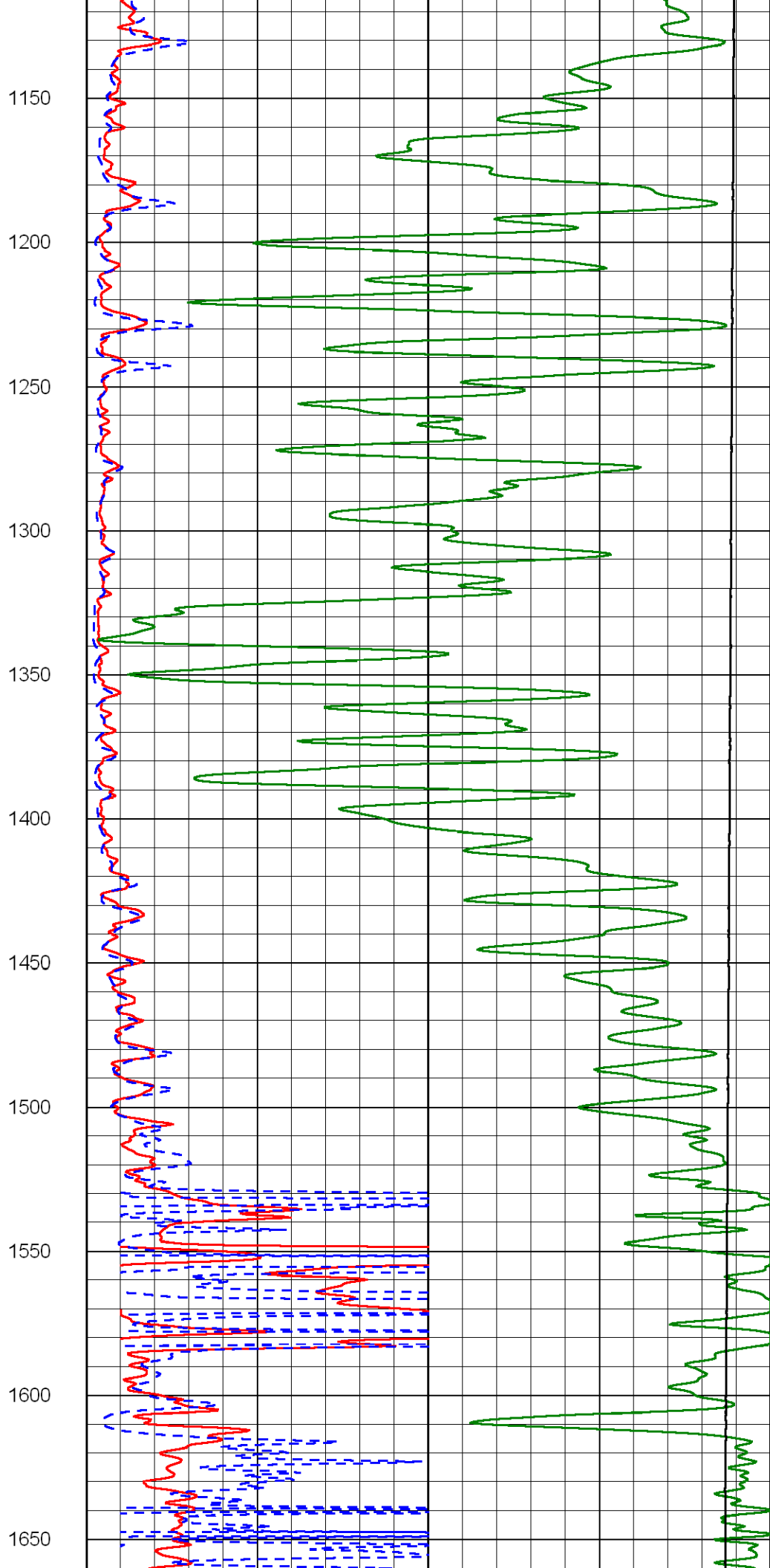
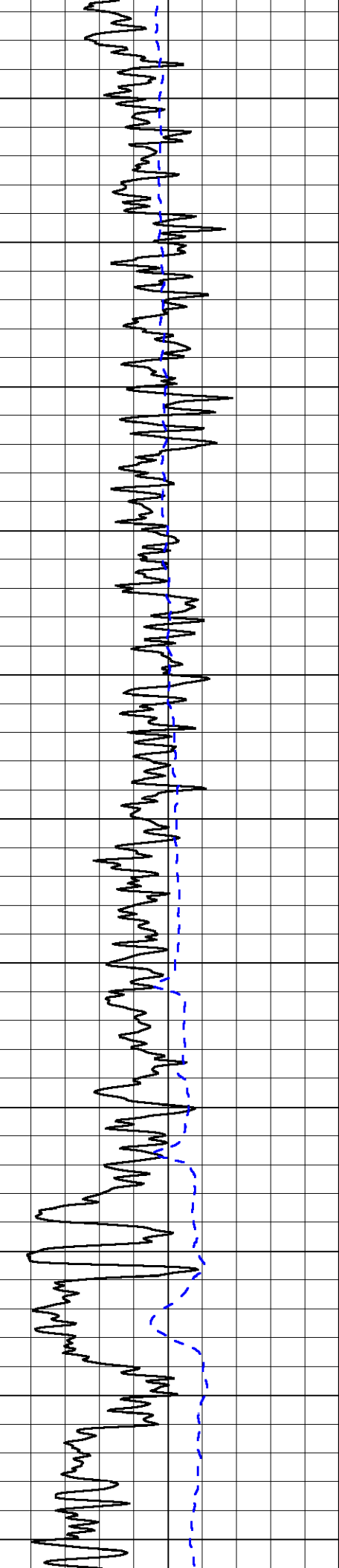
1000 Conductivity 0

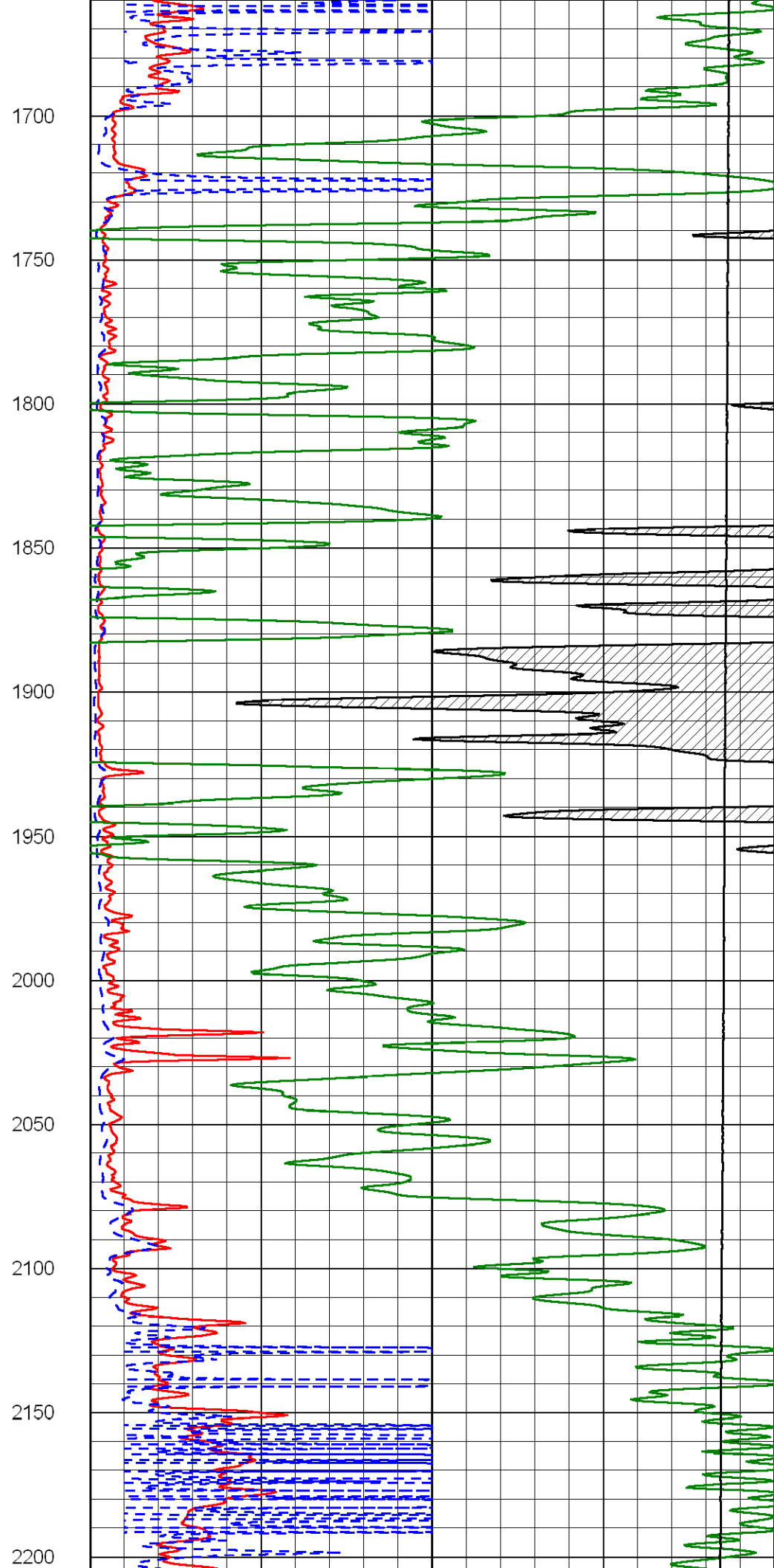
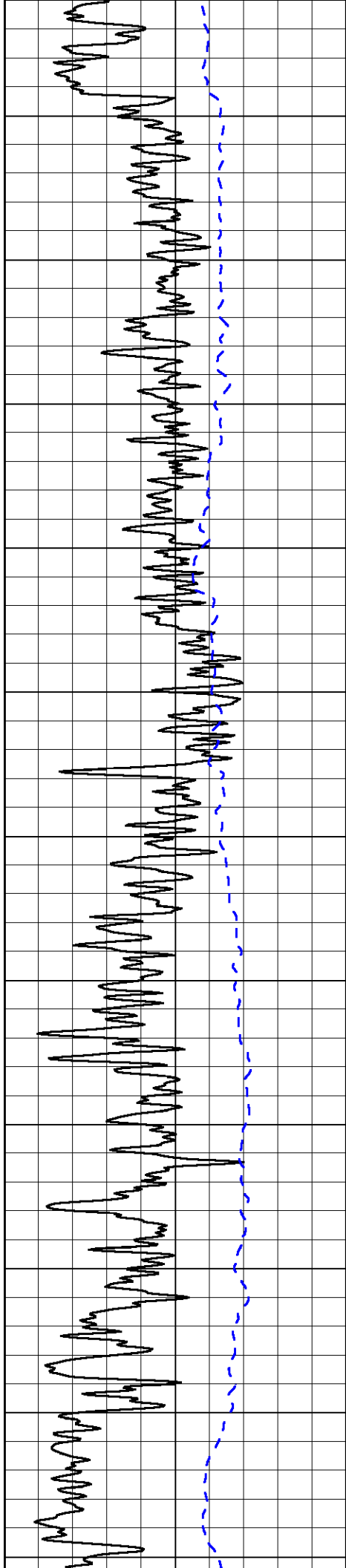
15000 Line Tension 0

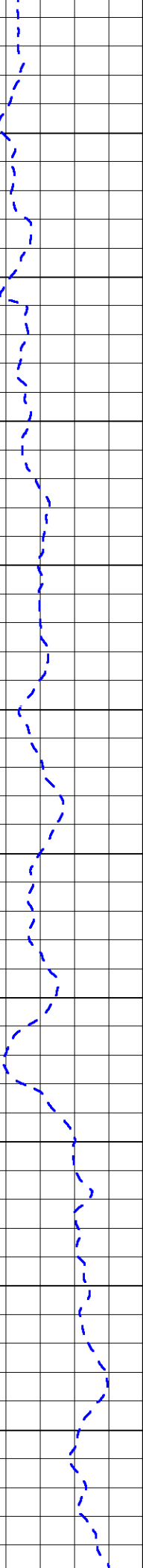
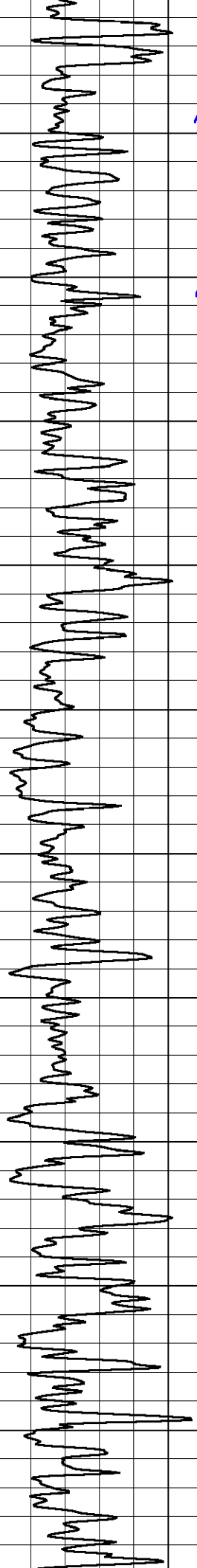
50 Shallow Resistivity 500

50 Deep Resistivity 500









2250

2300

2350

2400

2450

2500

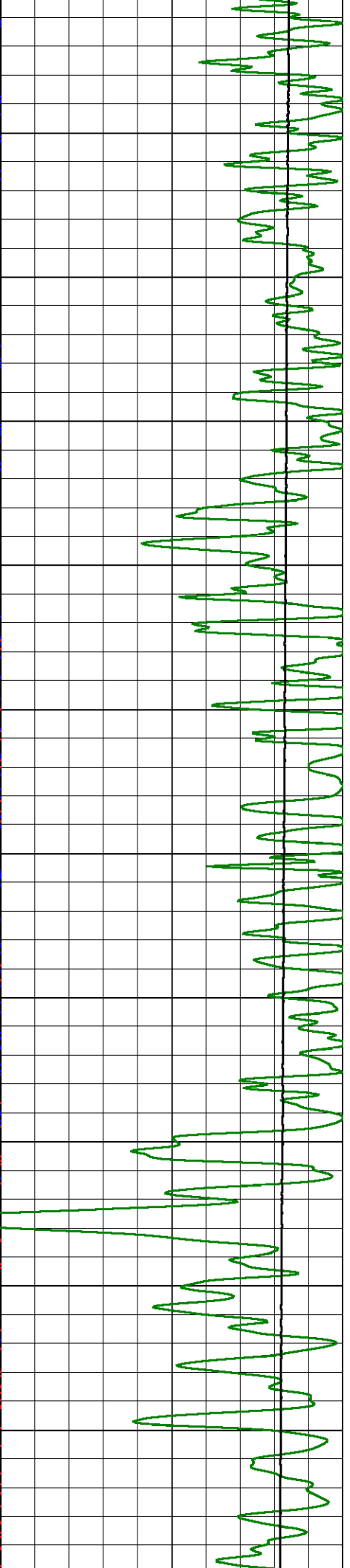
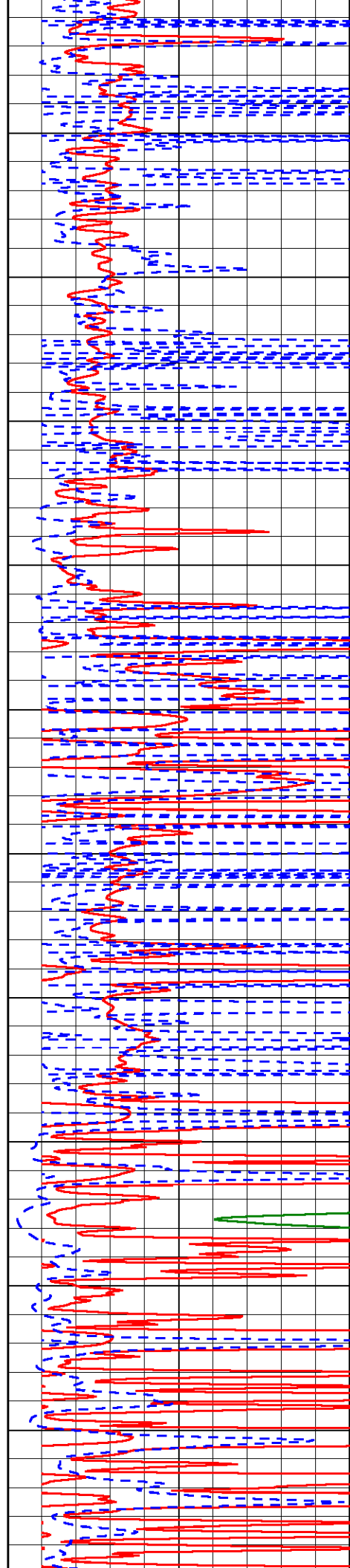
2550

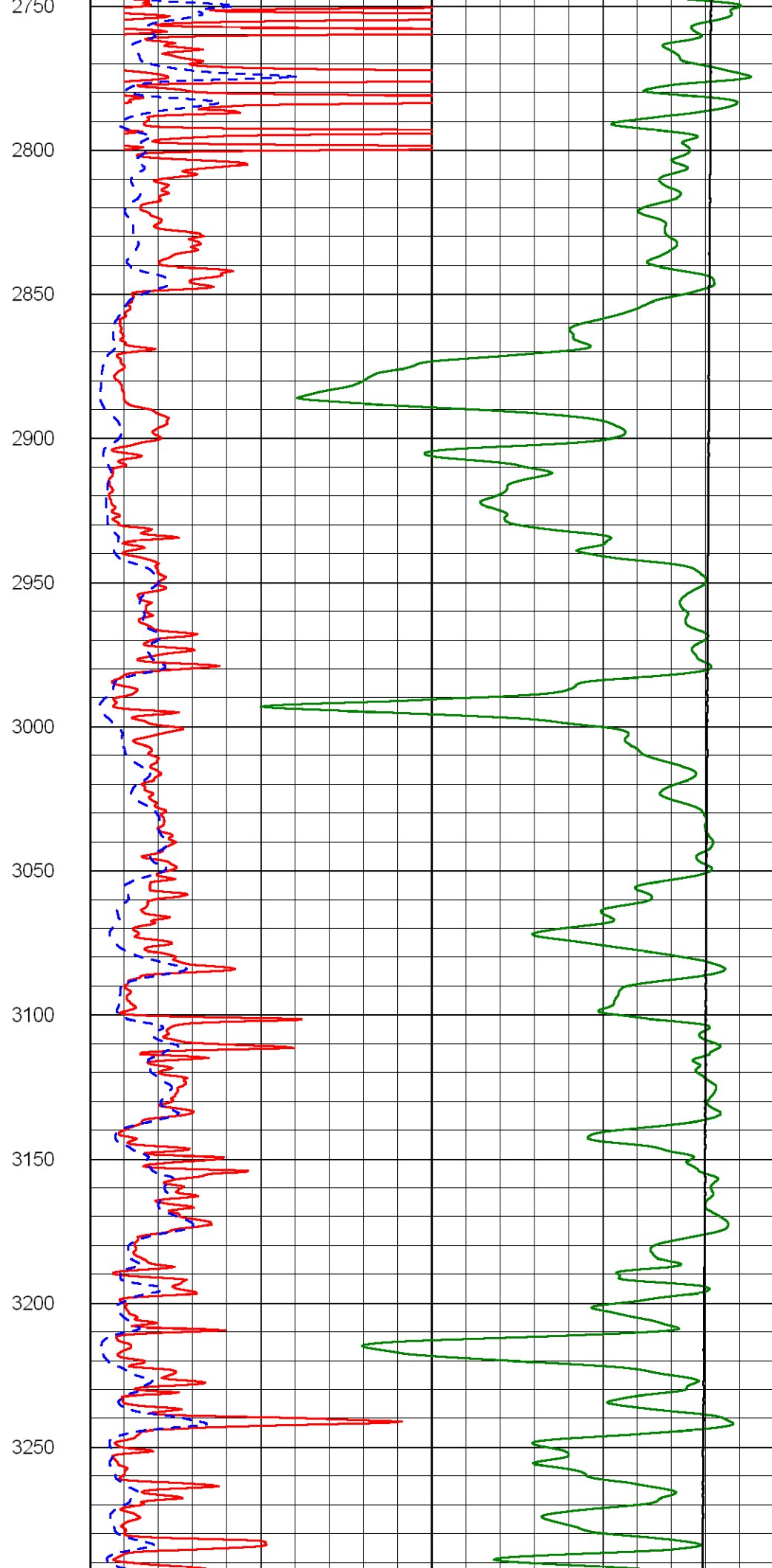
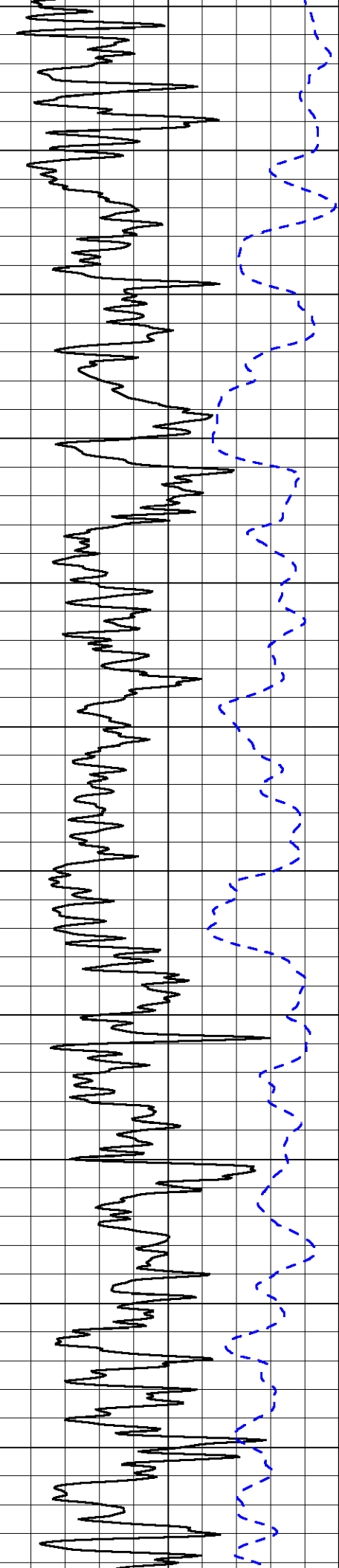
2600

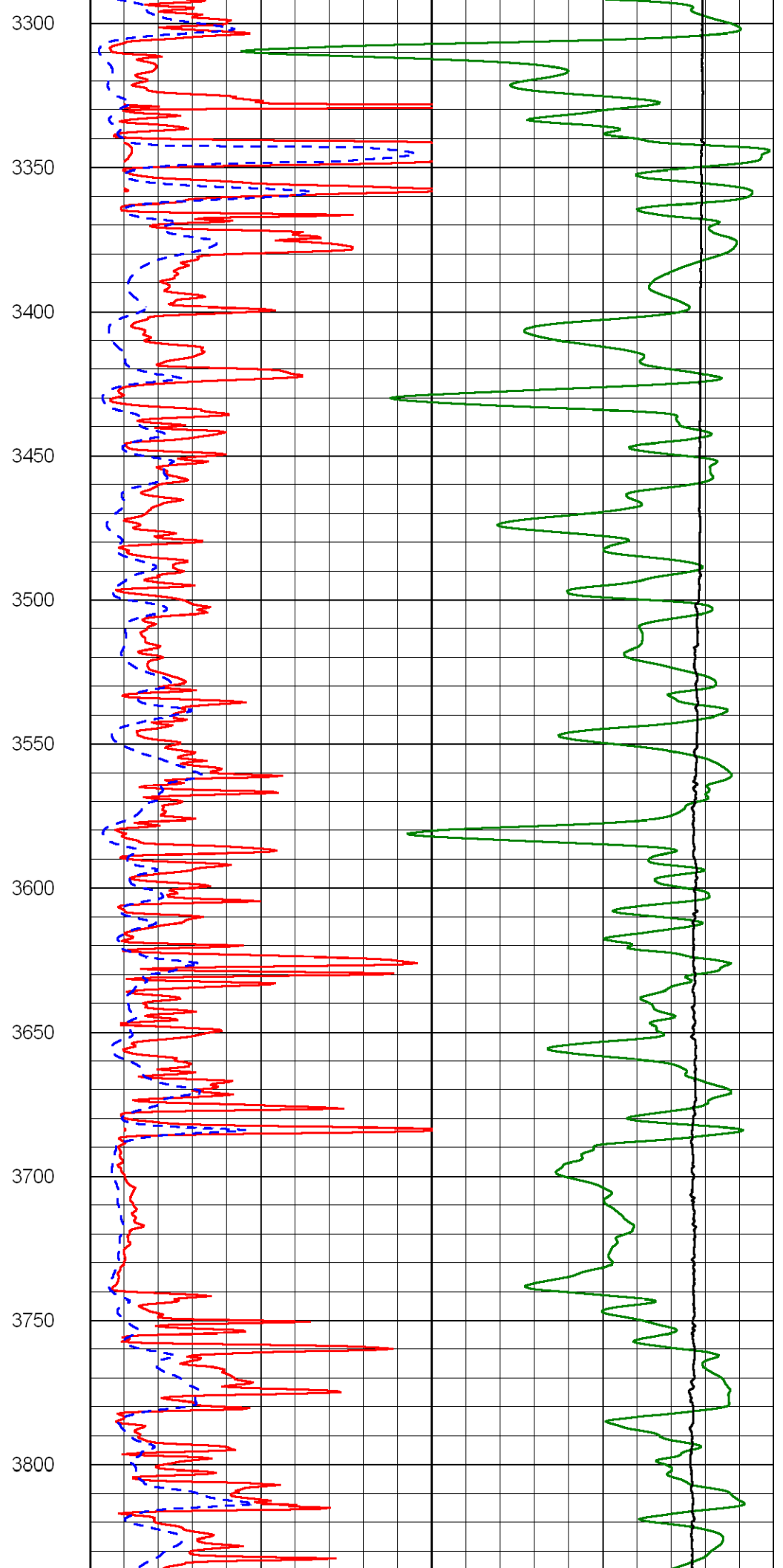
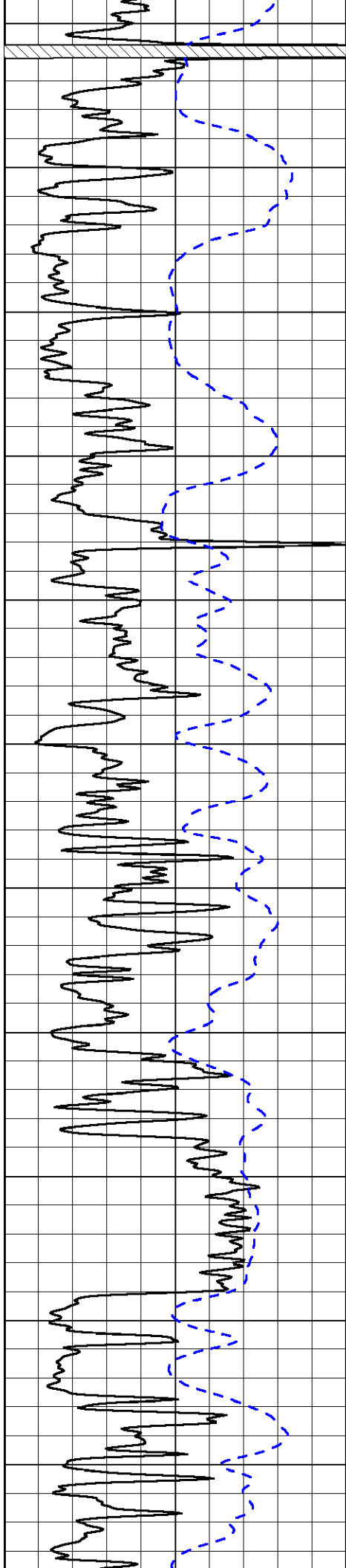
2650

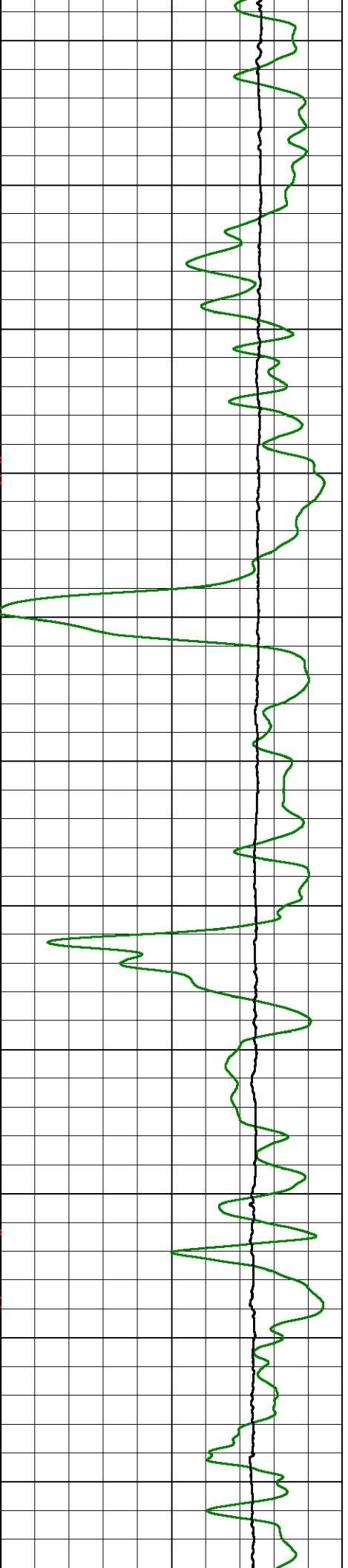
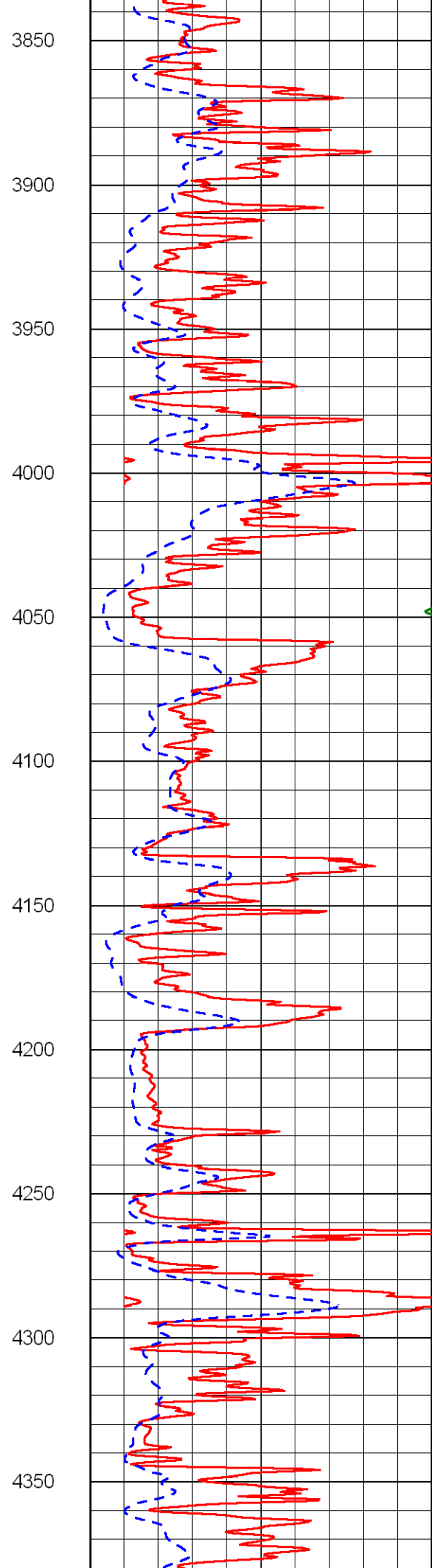
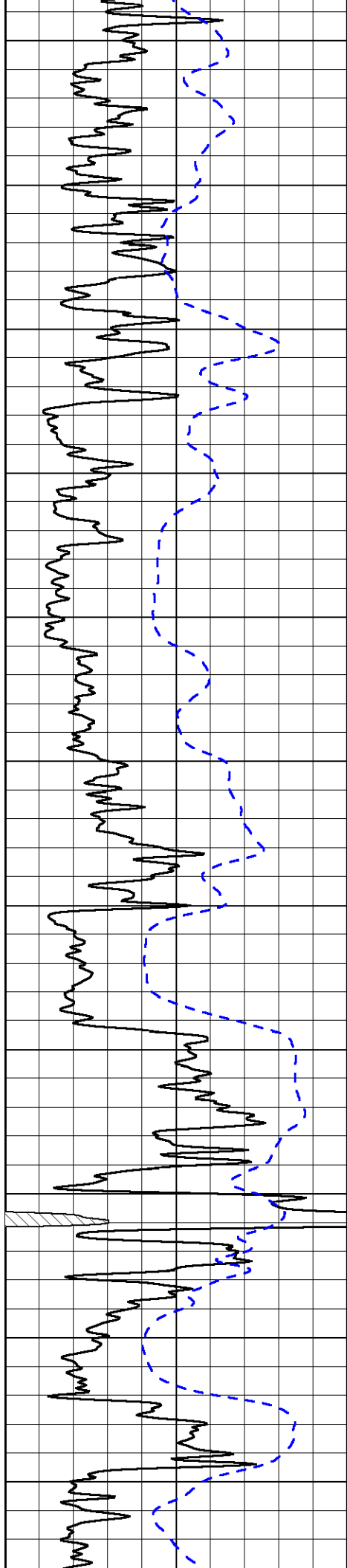
2700

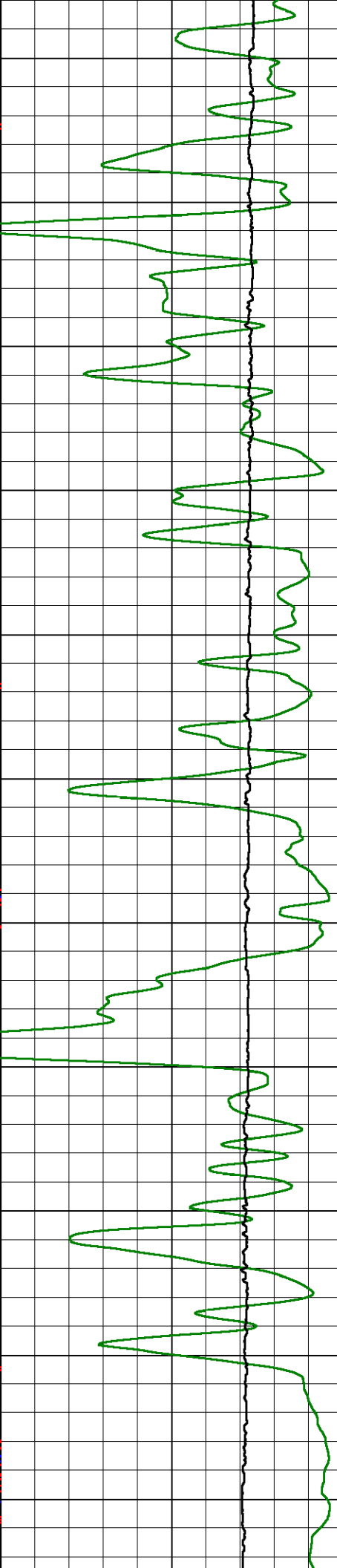
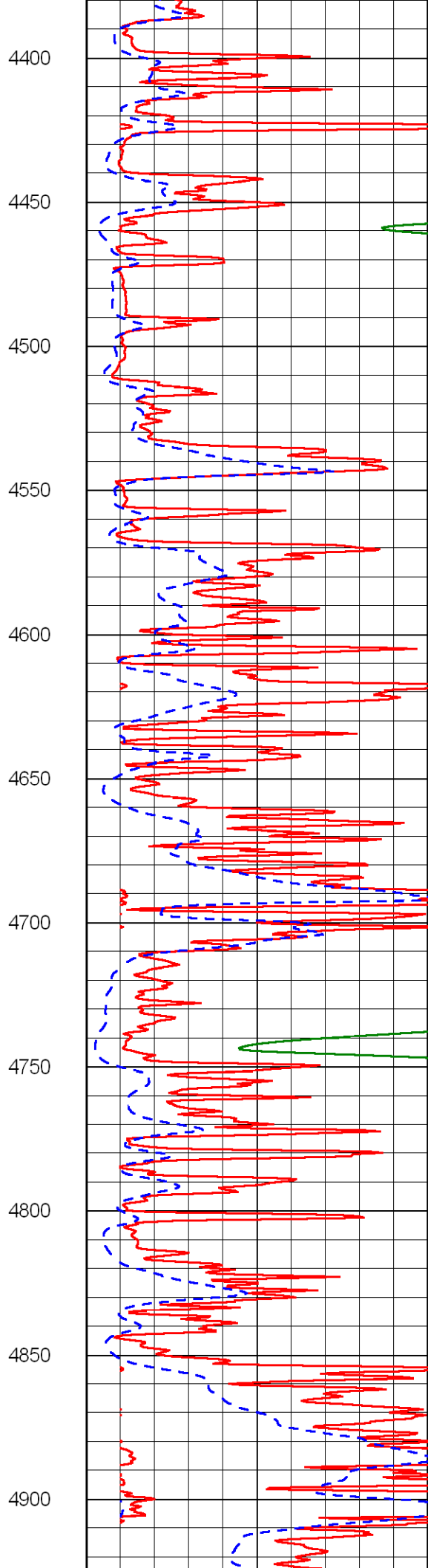
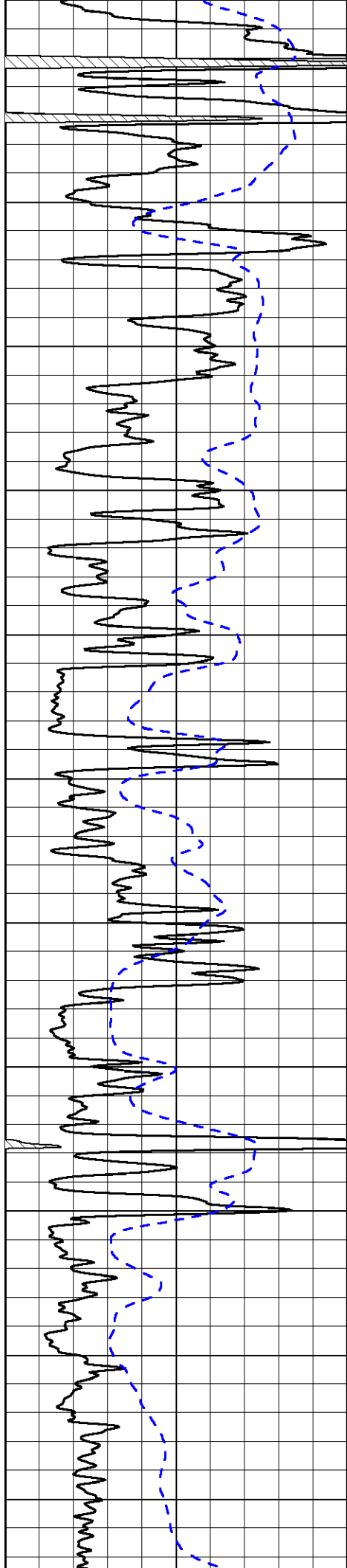
2750

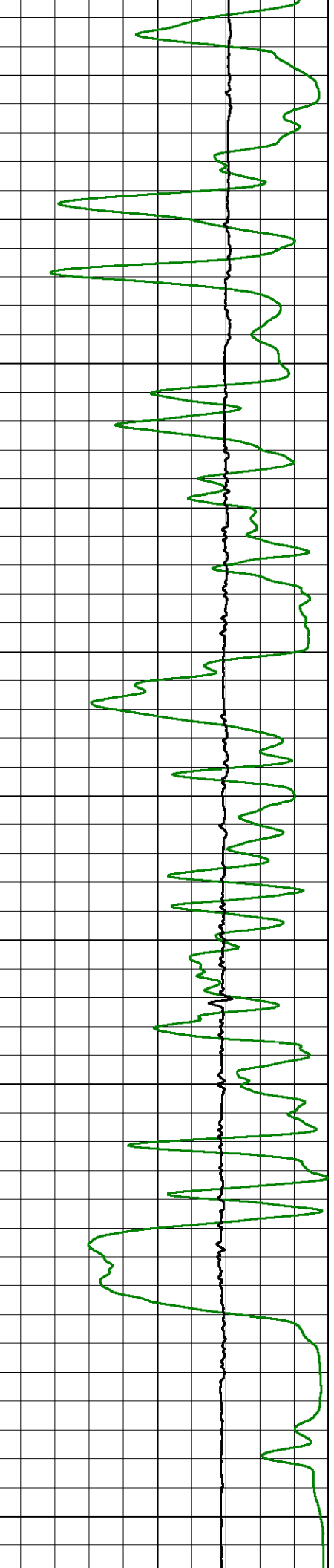
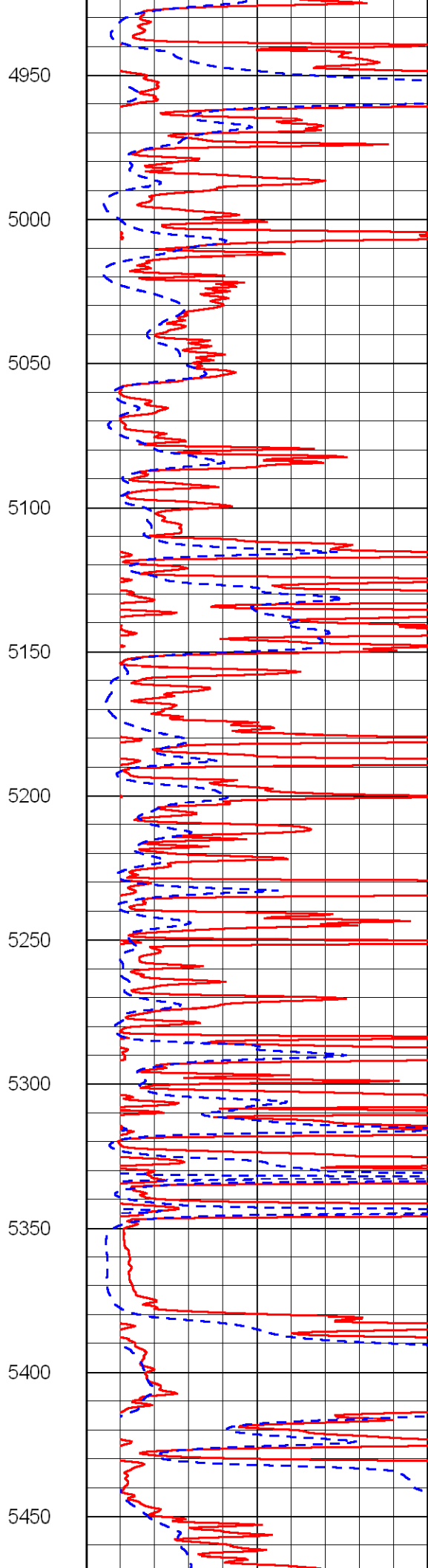
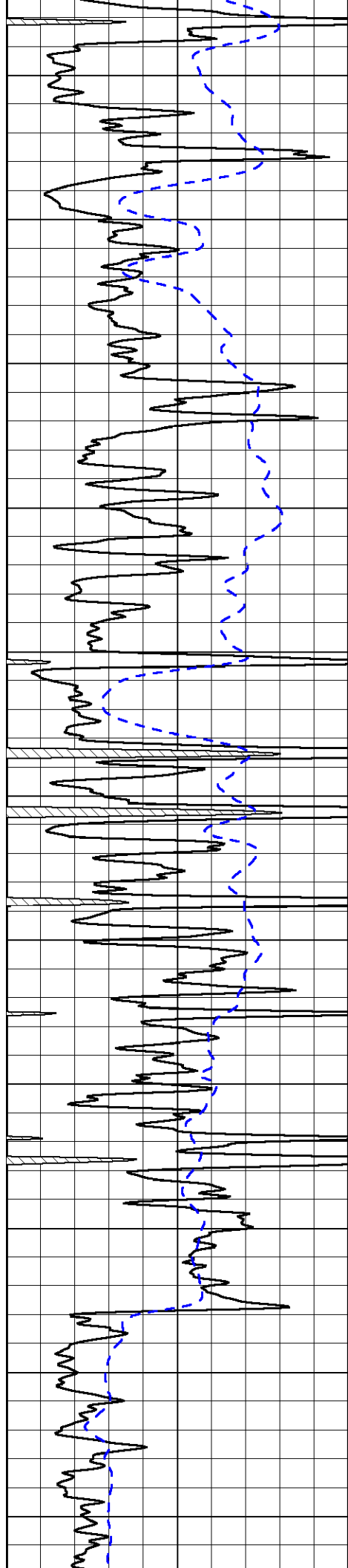


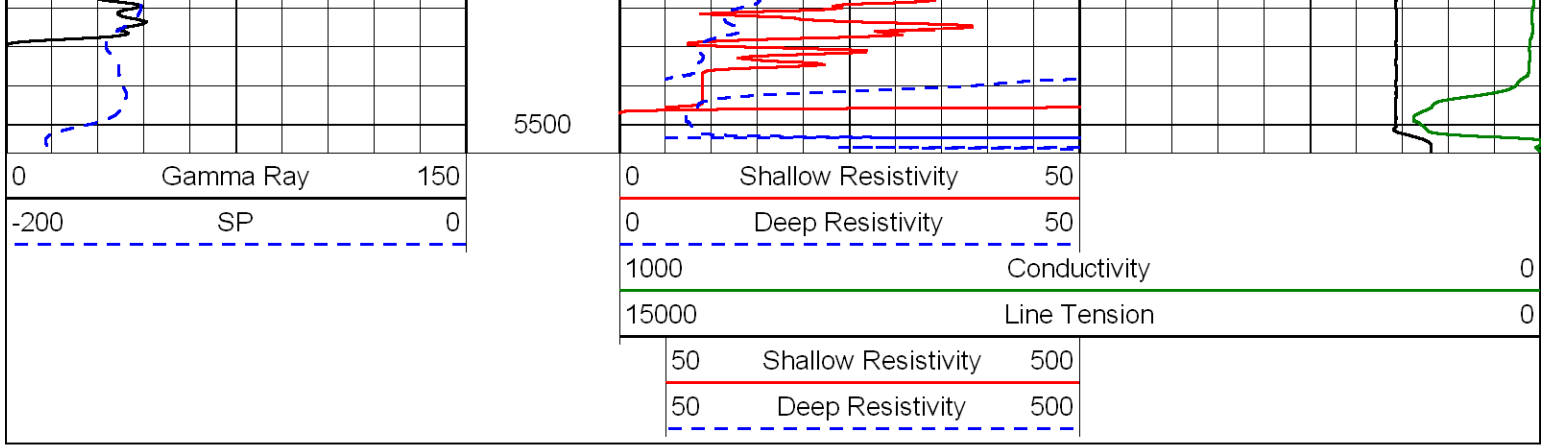




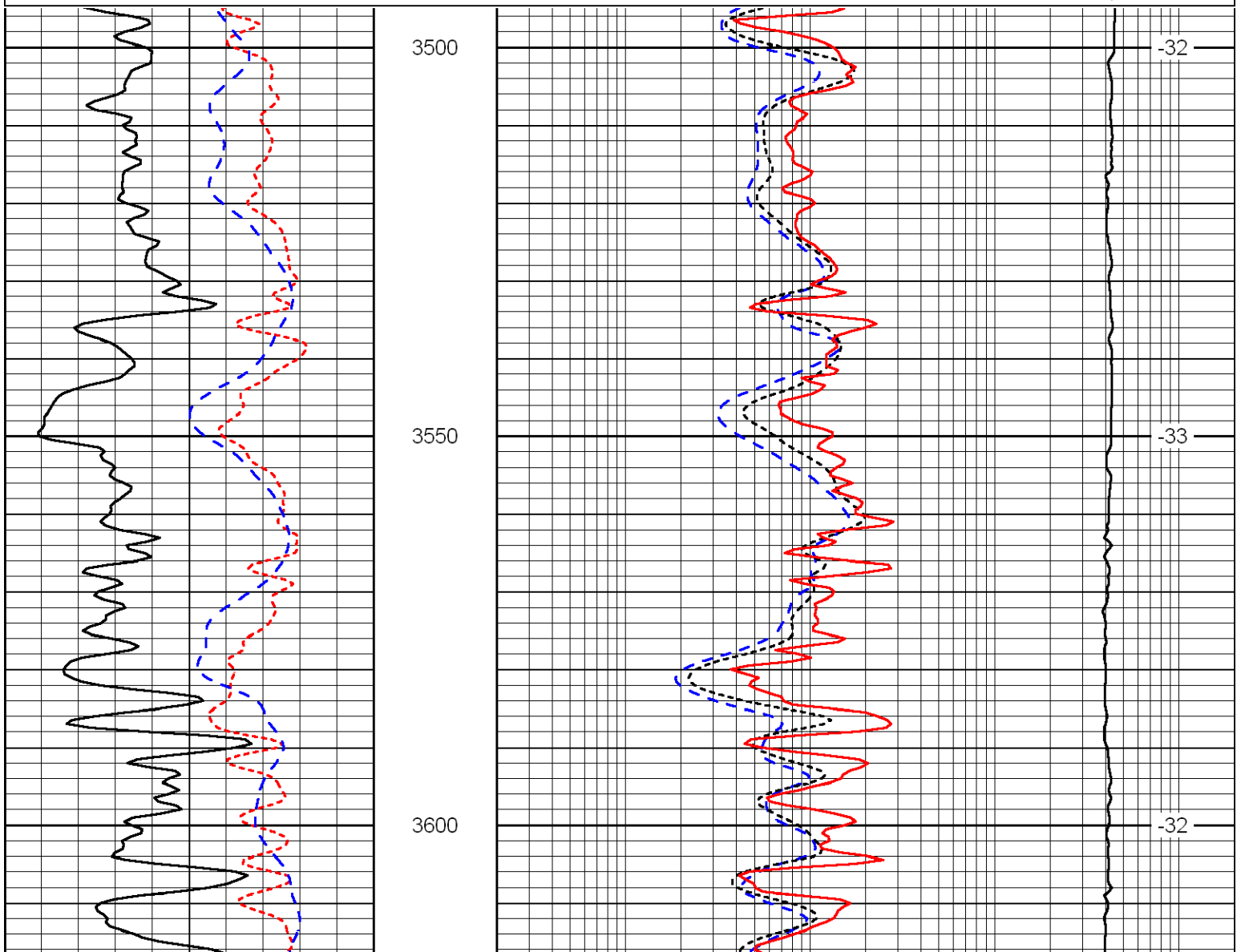
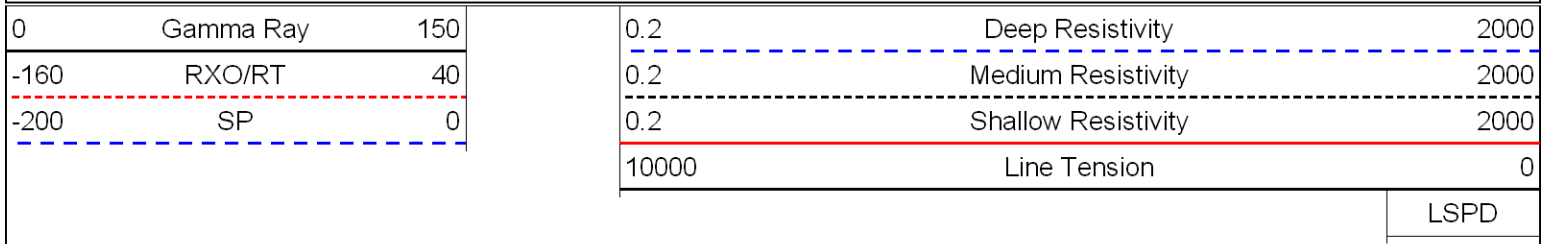


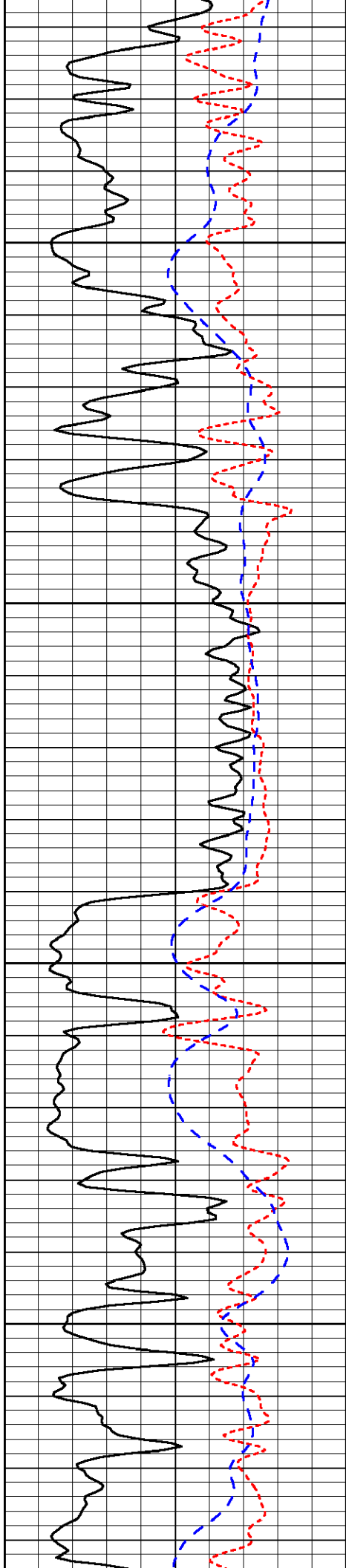






Database File: berexco_11192012hd.db
 Dataset Pathname: dil/brxstack
 Presentation Format: dil
 Dataset Creation: Tue Nov 20 00:52:04 2012
 Charted by: Depth in Feet scaled 1:240



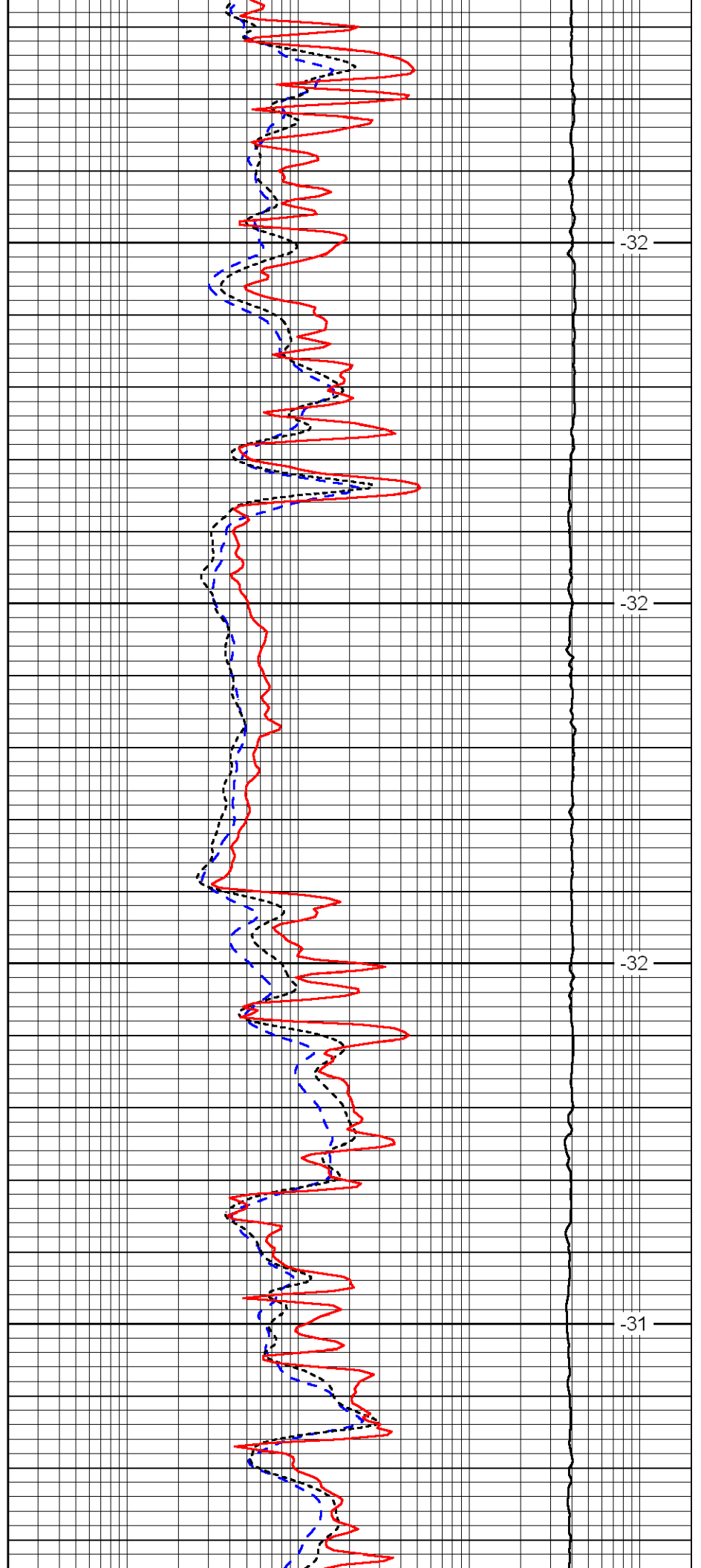


3650

3700

3750

3800

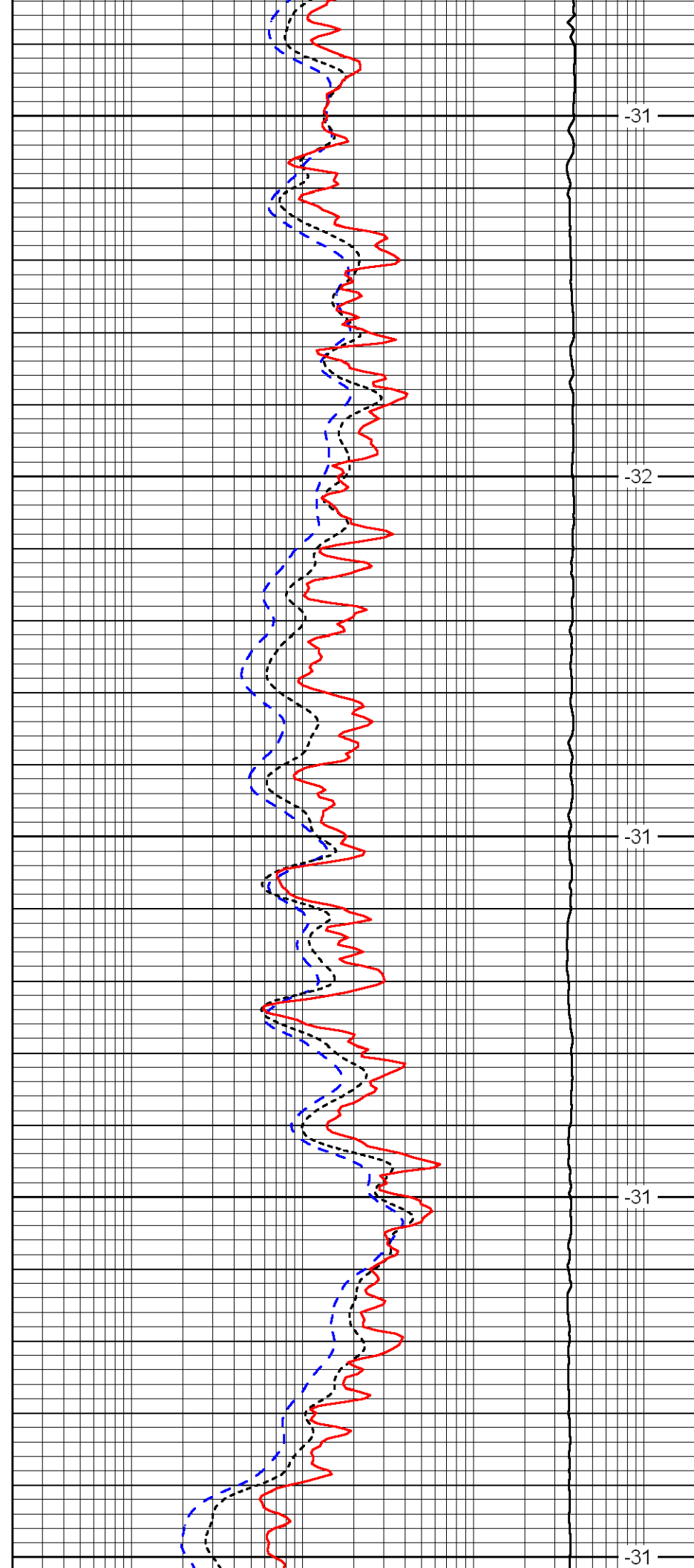
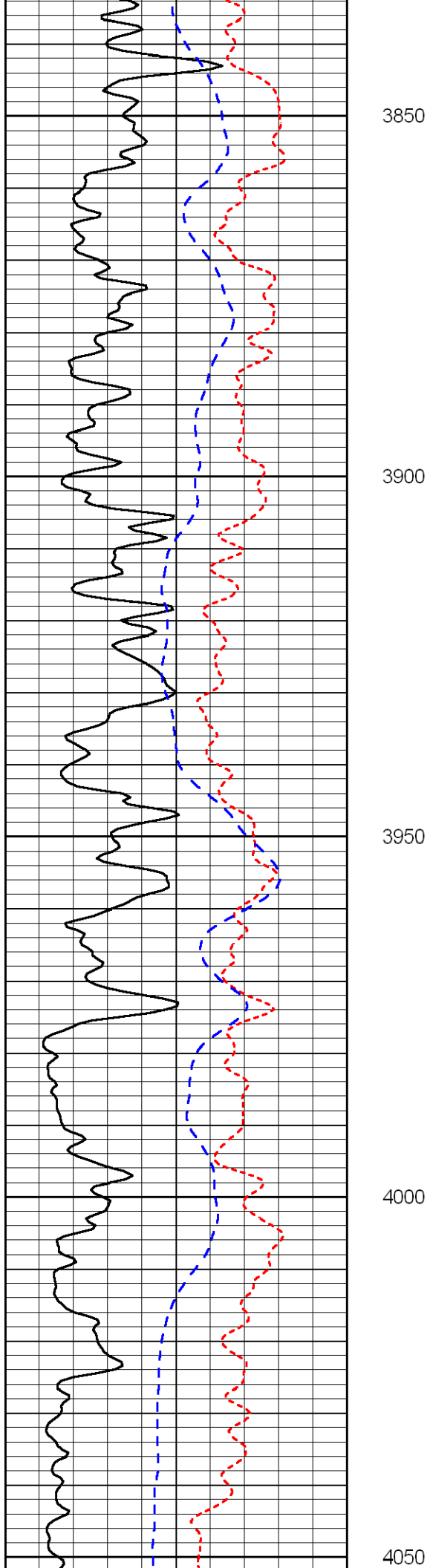


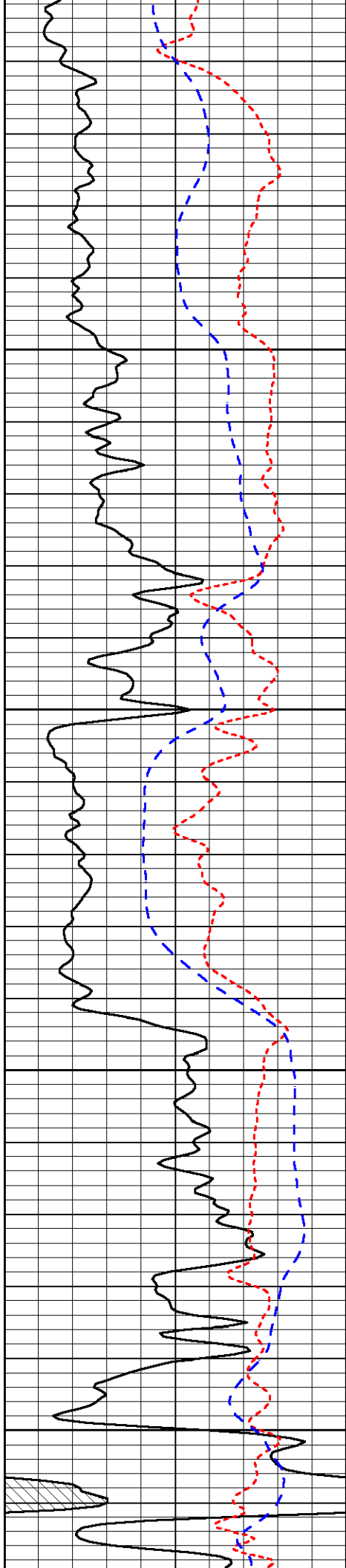
-32

-32

-32

-31



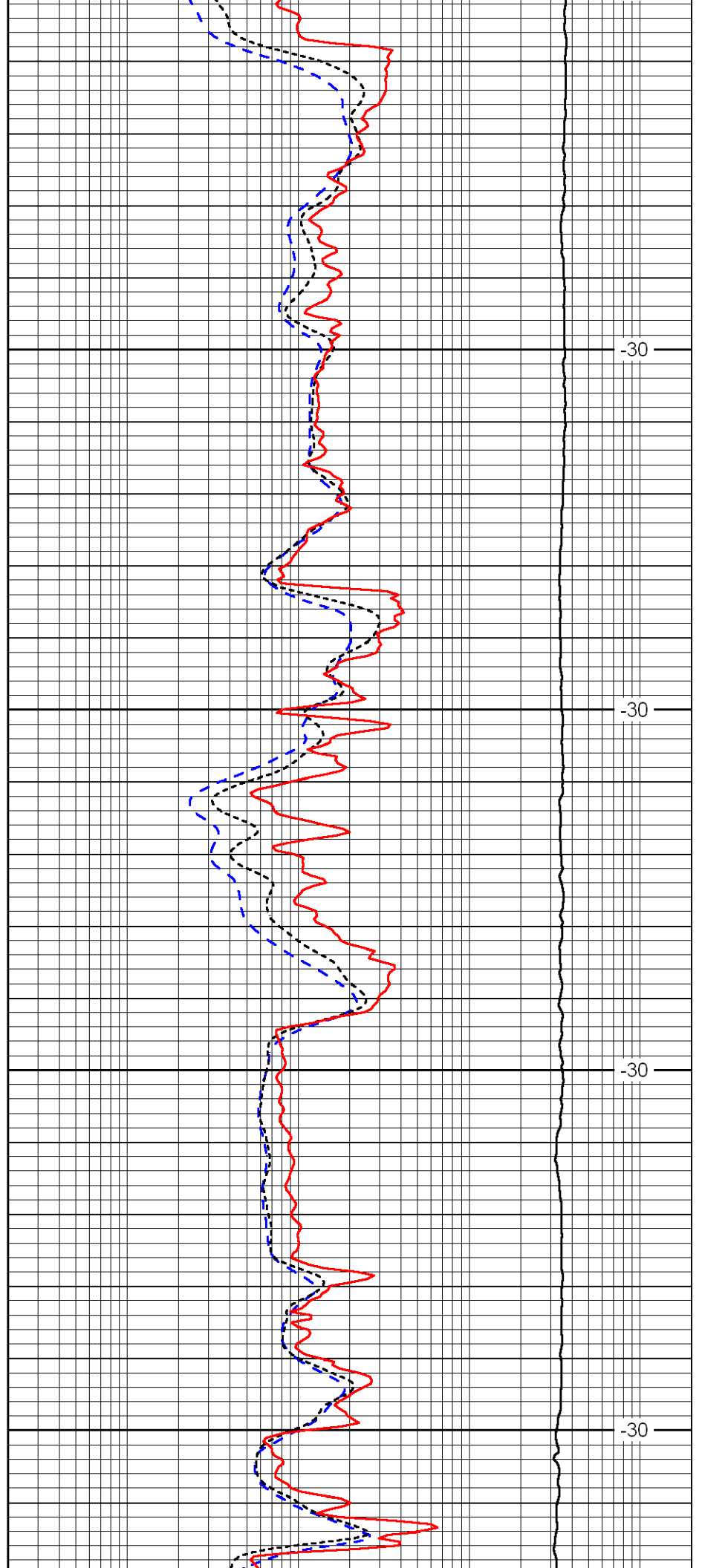


4100

4150

4200

4250

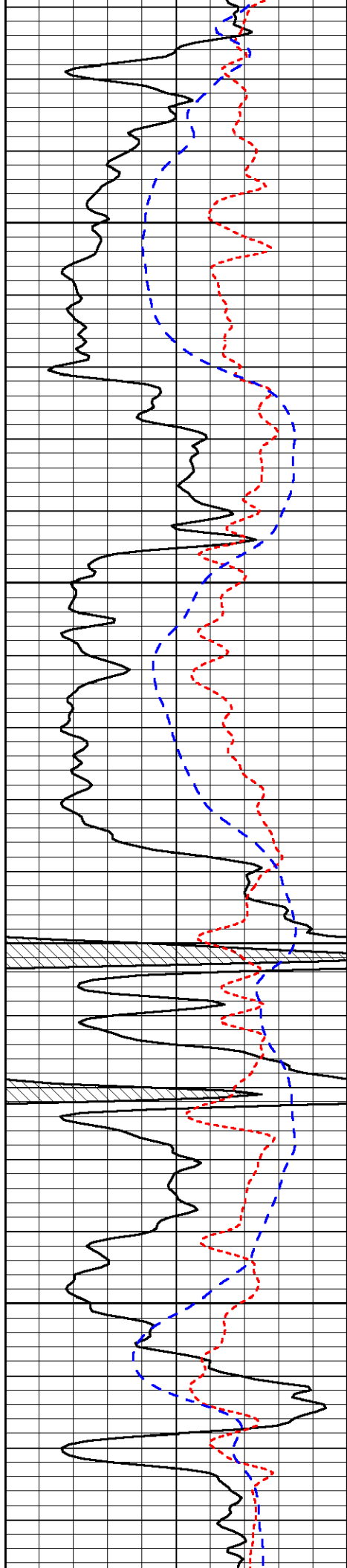


-30

-30

-30

-30

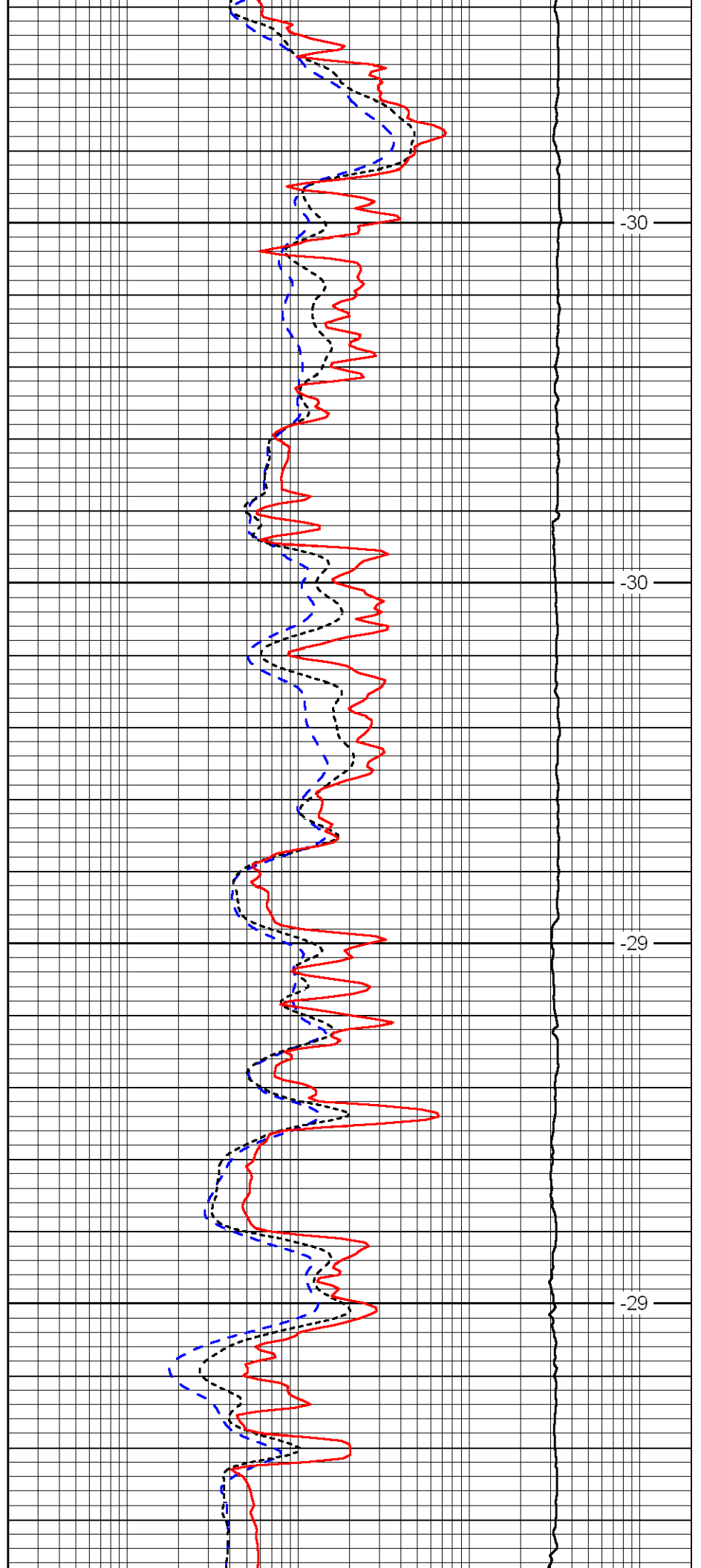


4300

4350

4400

4450

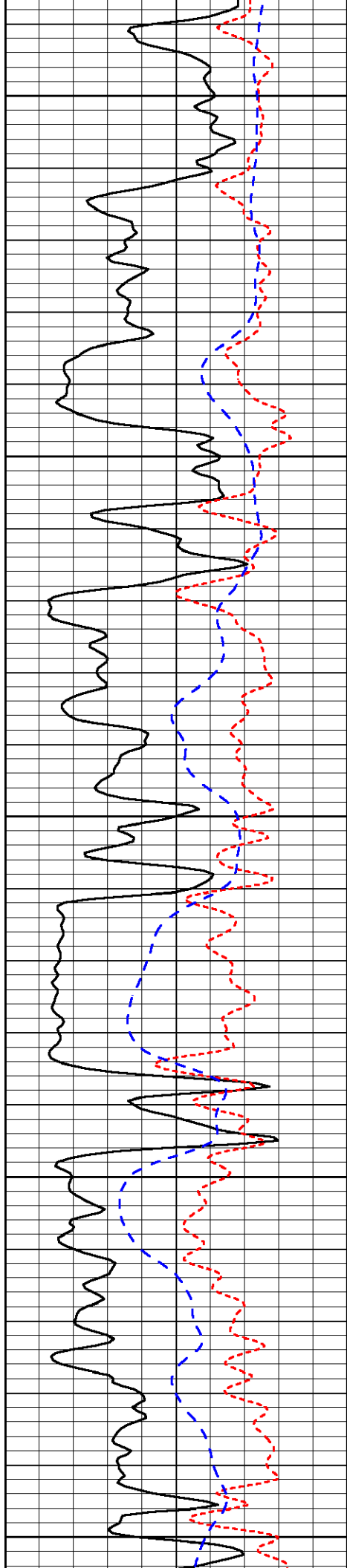


-30

-30

-29

-29



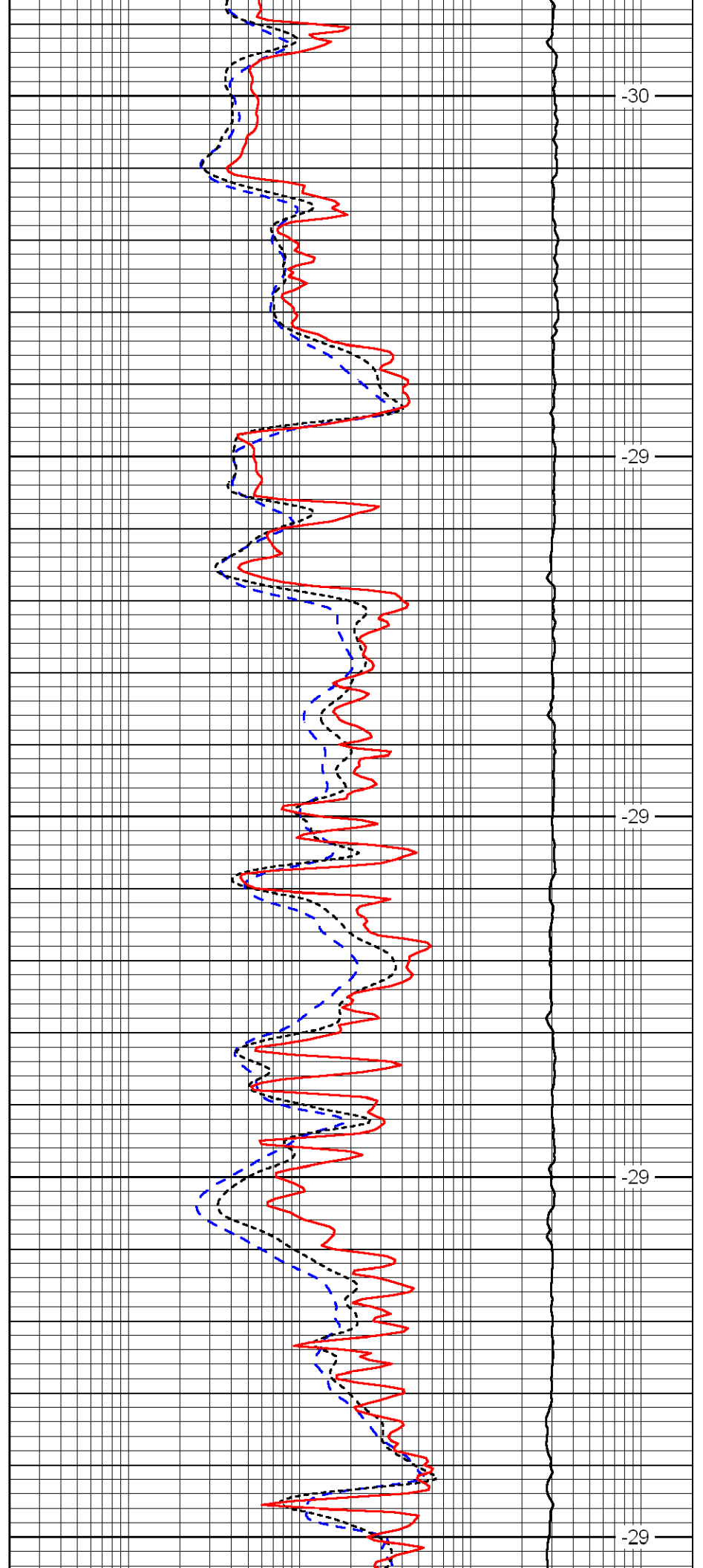
4500

4550

4600

4650

4700



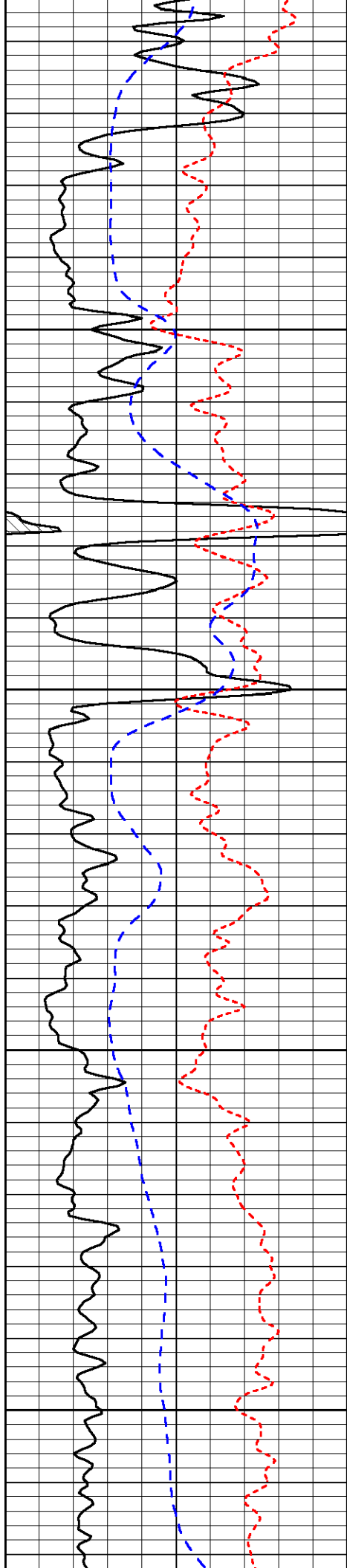
-30

-29

-29

-29

-29

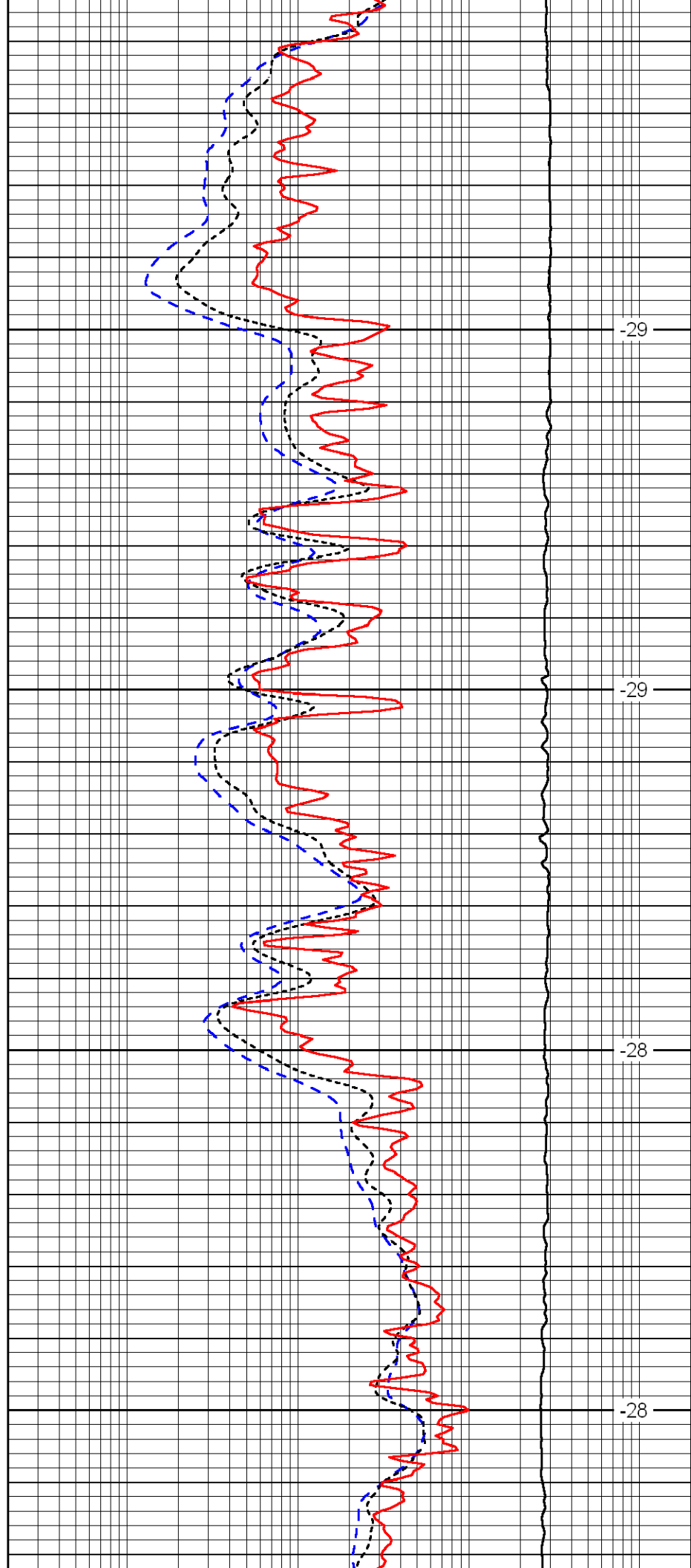


4750

4800

4850

4900

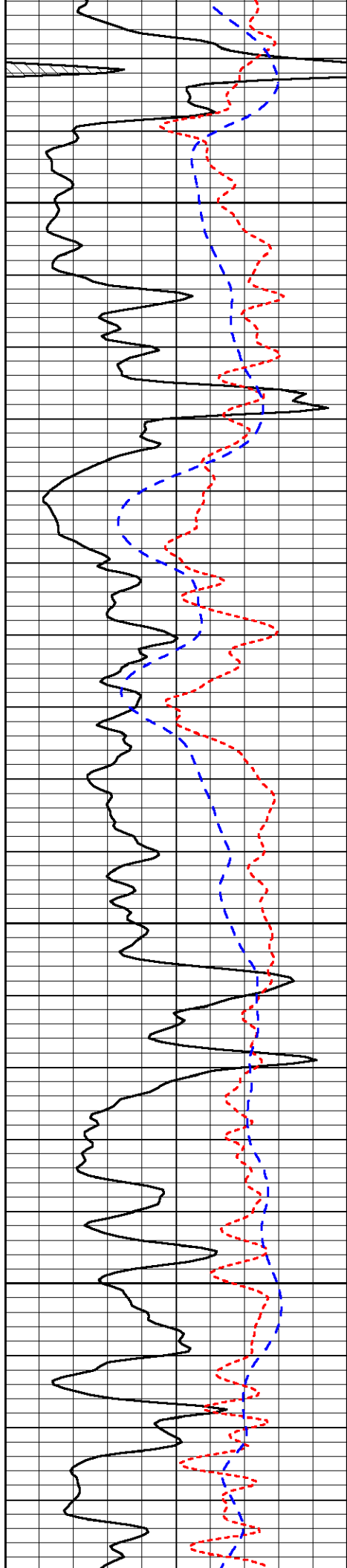


-29

-29

-28

-28

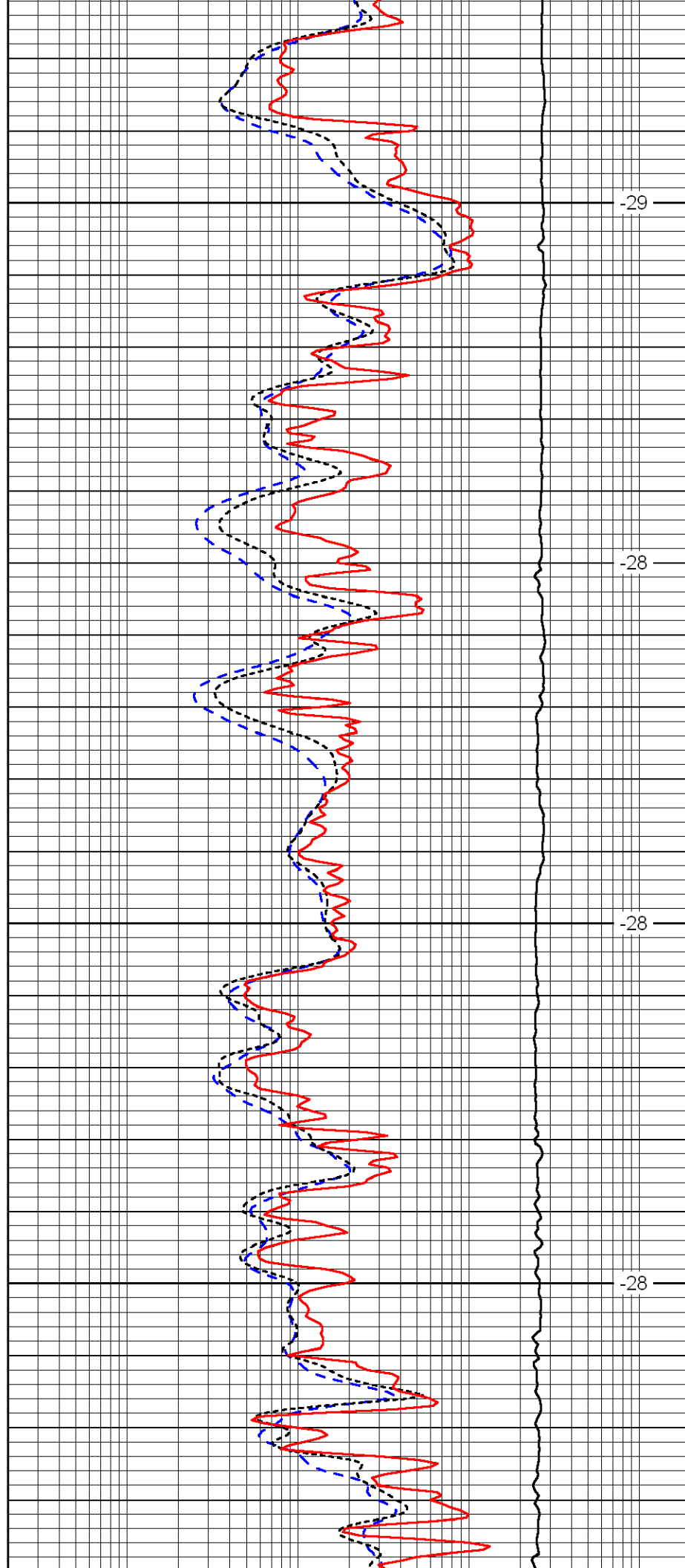


4950

5000

5050

5100

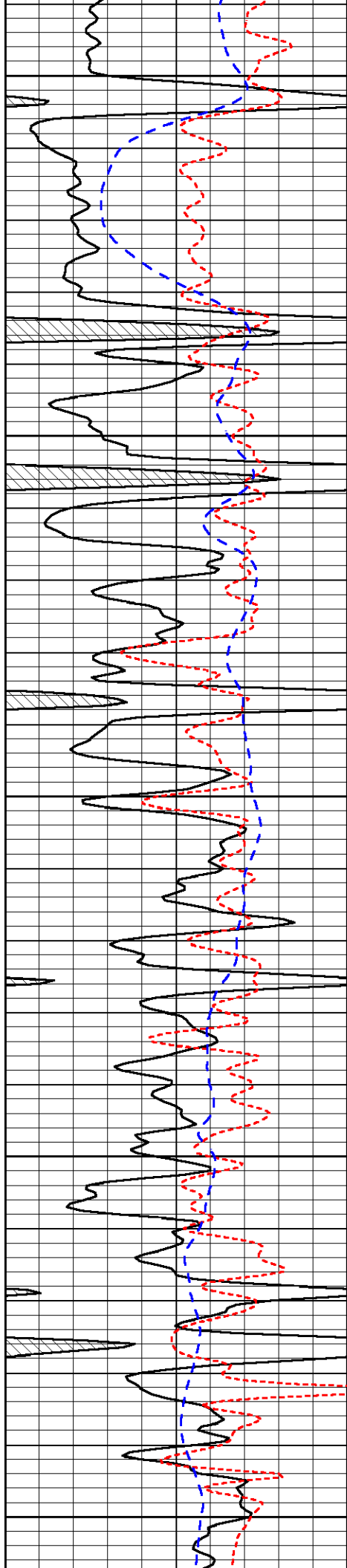


-29

-28

-28

-28



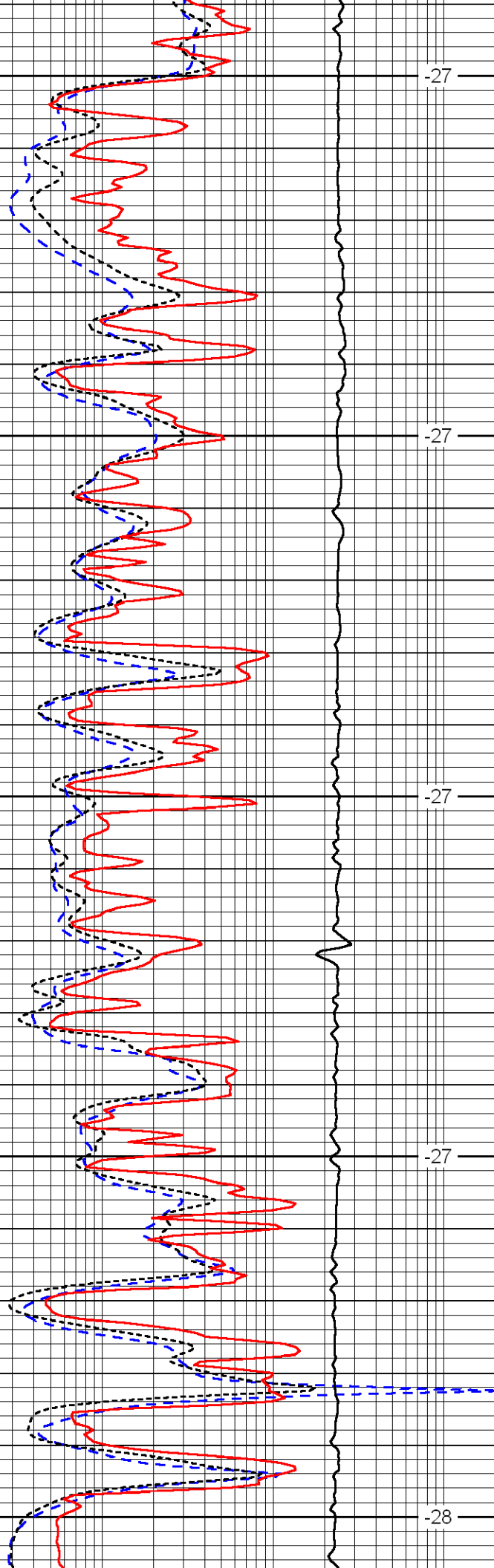
5150

5200

5250

5300

5350



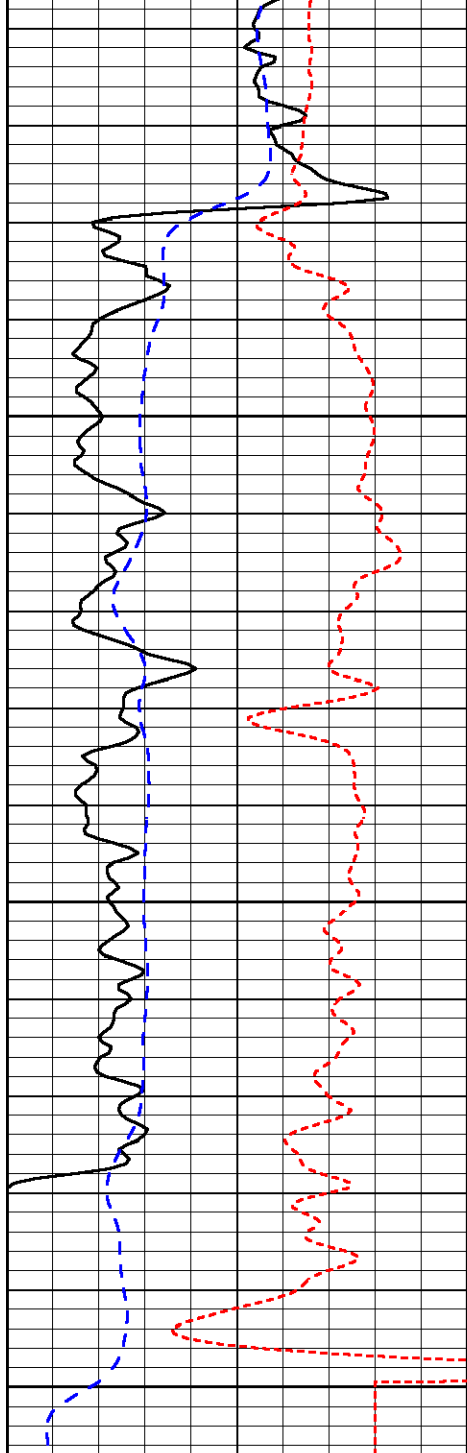
-27

-27

-27

-27

-28

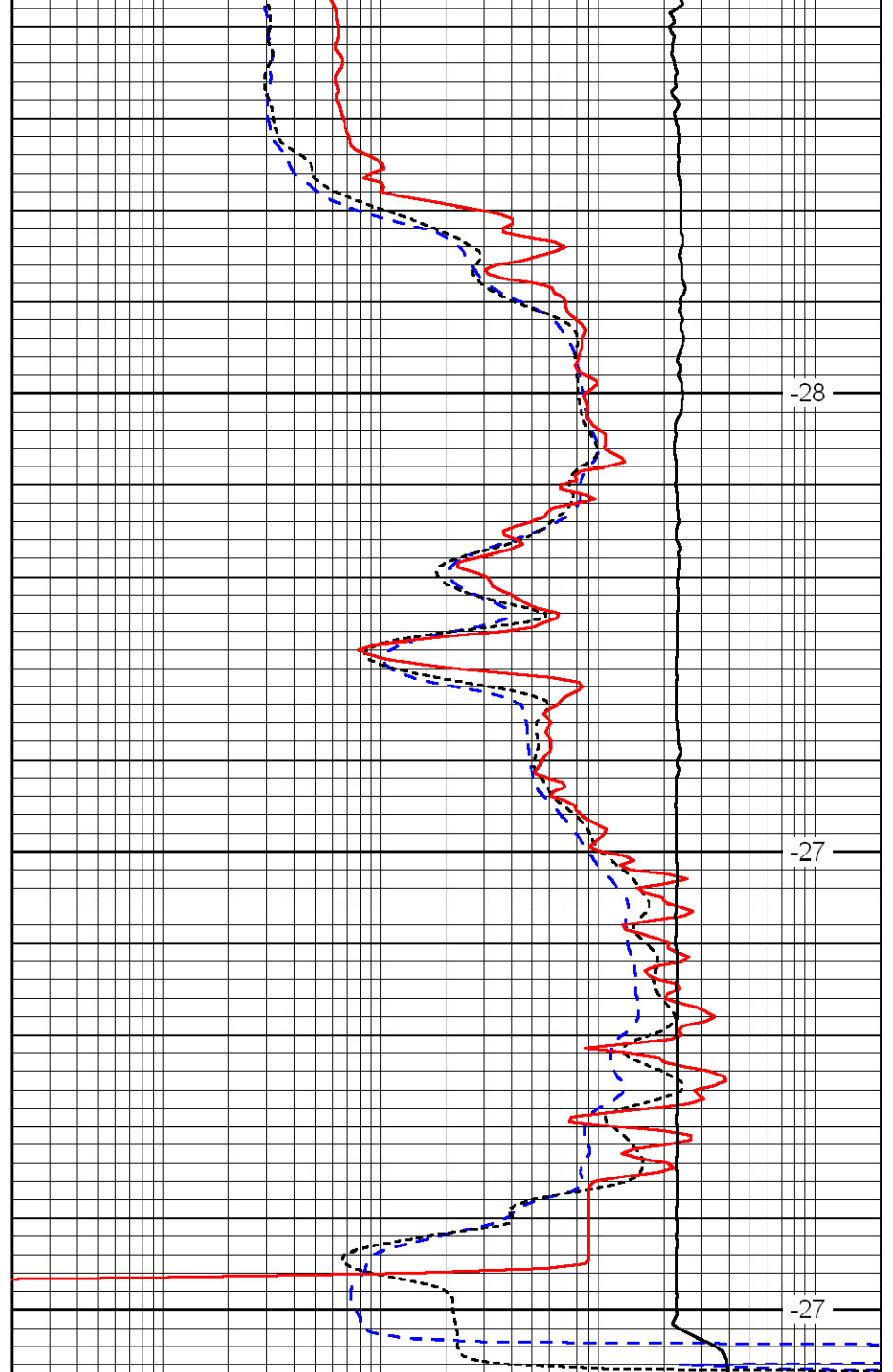


0	Gamma Ray	150
-160	RXO/RT	40
-200	SP	0

5400

5450

5500



-28

-27

-27

0.2	Deep Resistivity	2000
0.2	Medium Resistivity	2000
0.2	Shallow Resistivity	2000
10000	Line Tension	0

LSPD