



Pioneer Energy Services

Dual Compensated Porosity Log

API No.	15-057-20853-00-00	
Company	Berecxco, LLC	
Well	Shelor #1-34	
Field	Wildcat	
County	Ford	
State	Kansas	
Location	1233' FSL & 1943' FWL	
Sec: 34	Twp: 29S	Rge: 24W
Permanent Datum	Ground Level	Elevation 2588
Log Measured From	Kelly Bushing	13 Ft. Above Perm. Datum
Drilling Measured From	Kelly Bushing	
		Other Services DILMEL
		Elevation K.B. 2601 D.F. 2588 G.L. 2588

Date	11/19/2012	
Run Number	One	
Type Log	CNL / CDL	
Depth Driller	5500	
Depth Logger	5502	
Bottom Logged Interval	5481	
Top Logged Interval	3500	
Type Fluid In Hole	Chemical	
Salinity, PPM CL	14800	
Density	9.5	
Level	Full	
Max. Rec. Temp. F	133	
Operating Rig Time	5 Hours	
Equipment -- Location	91 Hays	
Recorded By	D. Schmidt	
Witnessed By	David Gould	

Borehole Record		Casing Record					
Run No	Bit	From	To	Size	Wgt.	From	To
One	12.25	00	690	8.625	23#	00	690
Two	7.875	690					

<<< Fold Here >>>

All interpretations are opinions based on inferences from electrical or other measurements and we cannot and do not guarantee the accuracy or correctness of any interpretation, and we shall not, except in the case of gross or willful negligence on our part, be liable or responsible for any loss, costs, damages, or expenses incurred or sustained by anyone resulting from any interpretation made by any of our officers, agents or employees. These interpretations are also subject to our general terms and conditions set out in our current Price Schedule.

Comments

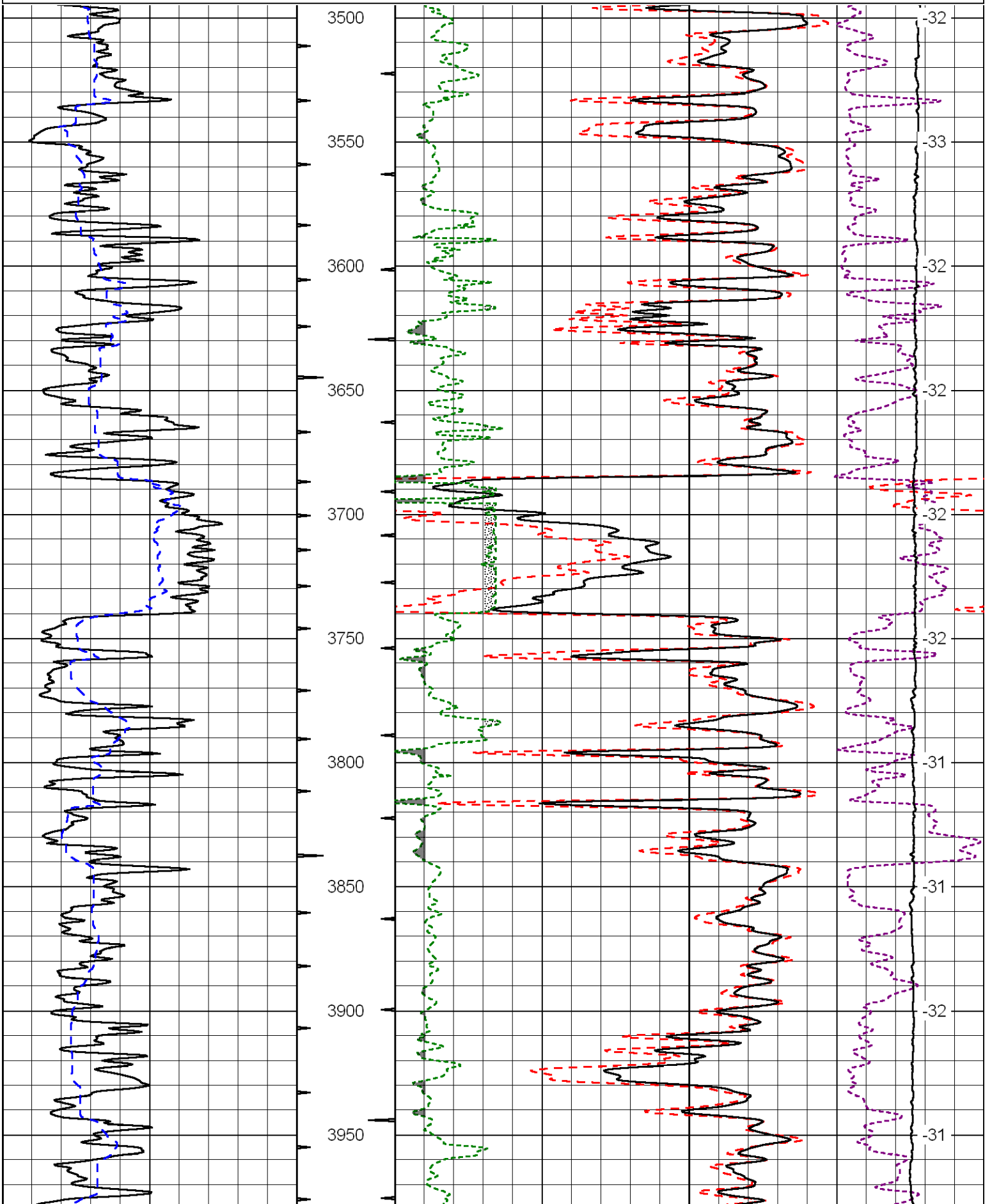
Thank you for using Log-Tech, Inc.
 (785) 625-3858

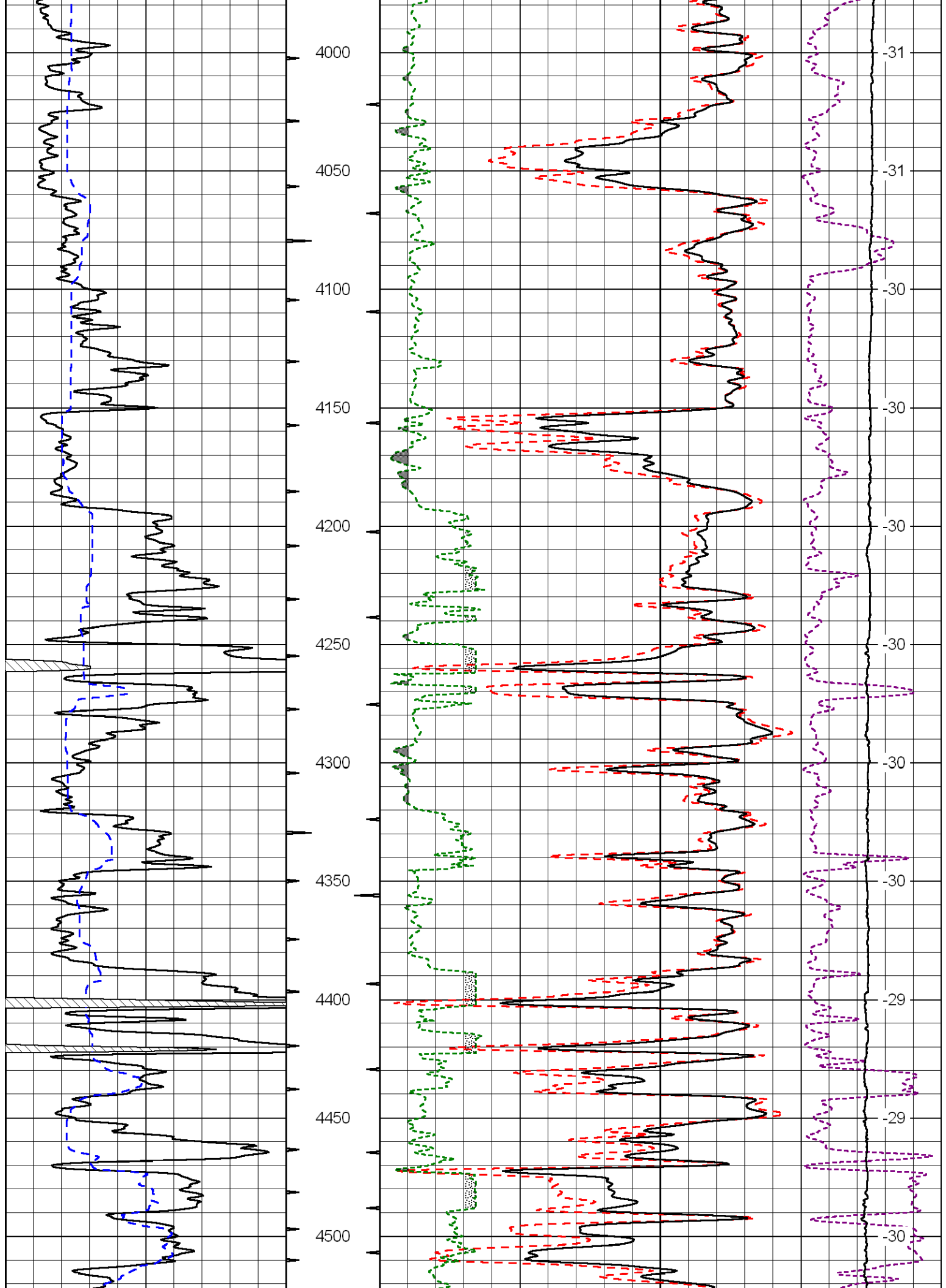
 Bloom,
 3 West to Rd 115, 1/4 North,
 East into

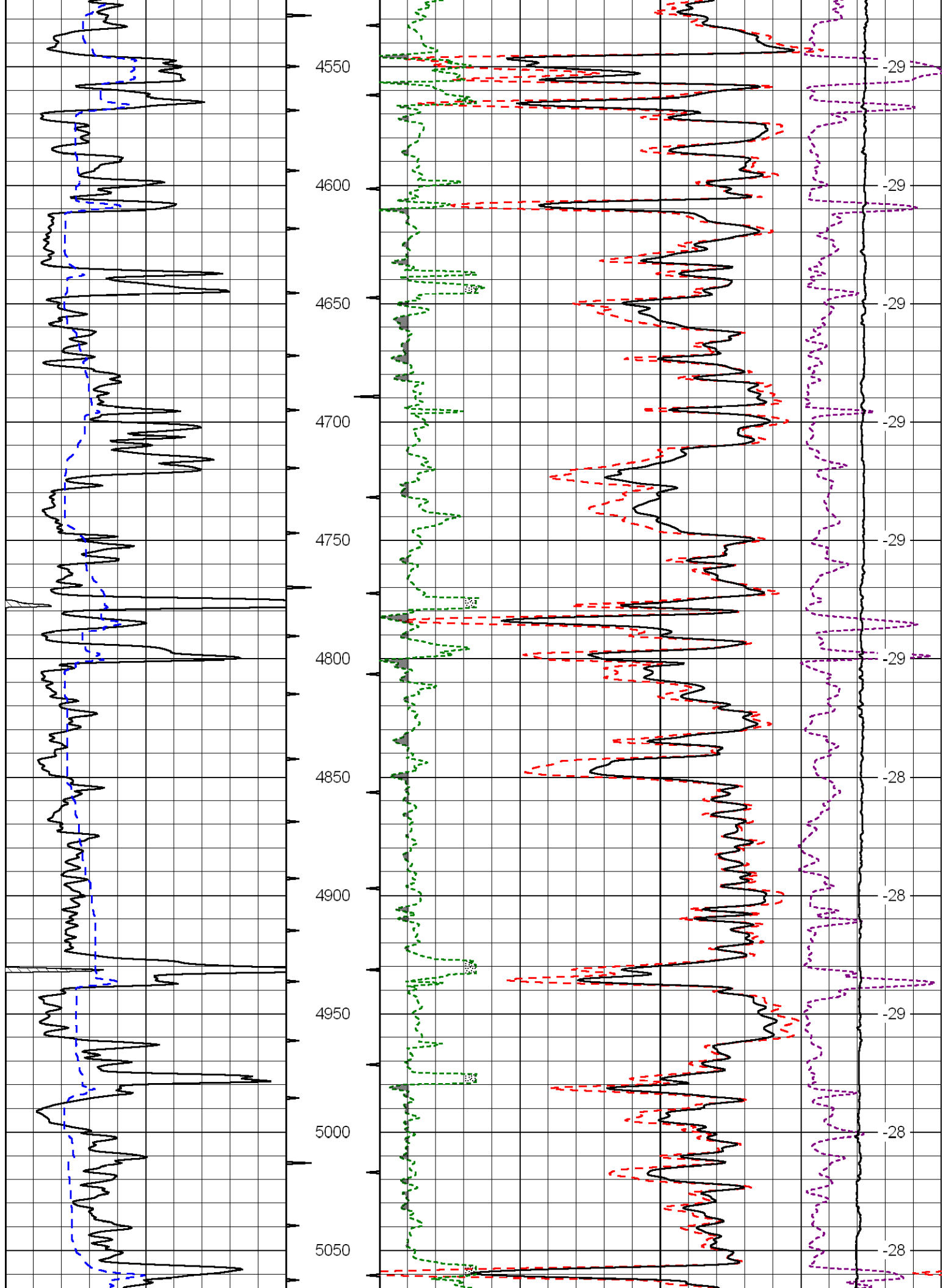
Database File: berexco_11192012hd.db
 Dataset Pathname: dil/brxstack
 Presentation Format: cdl
 Dataset Creation: Tue Nov 20 00:52:04 2012
 Charted by: Depth in Feet scaled 1:600

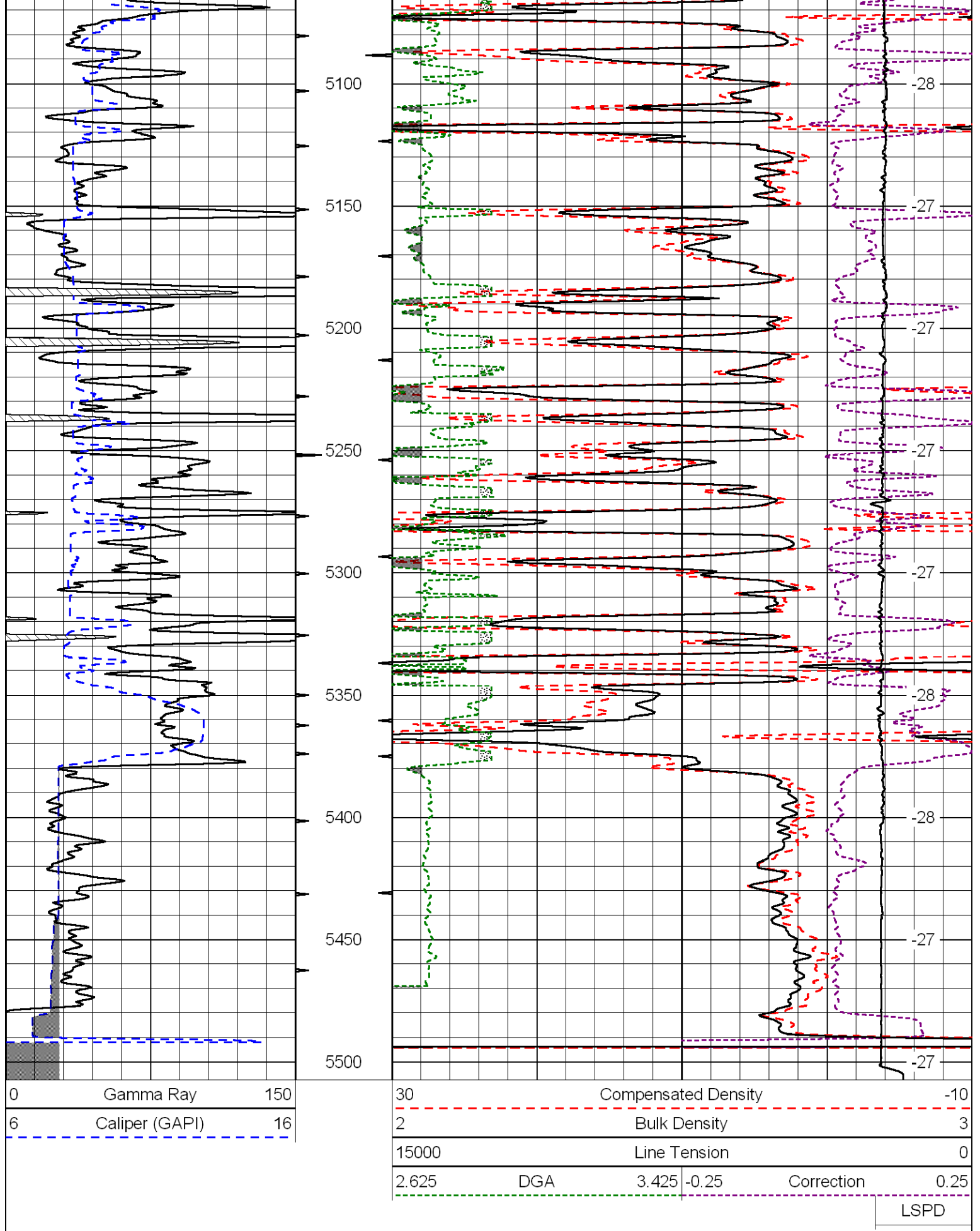
0	Gamma Ray	150
6	Caliper (GAPI)	16

30	Compensated Density		-10
2	Bulk Density		3
15000	Line Tension		0
2.625	DGA	3.425	-0.25
Correction			0.25
LSPD			









Database File: berexco_11192012hd.db
 Dataset Pathname: dil/brxstack
 Presentation Format: cndlspec

0	Gamma Ray	150
6	Caliper (GAPI)	16

30	CNLS			-10	
30	Compensated Density (2.71 ma)			-10	
2.625	DGA	3.425	-0.25	Correction	0.25
10000	Line Tension			0	

LSPD

