



Pioneer Energy Services

Microresistivity Log

API No.	15-057-20853-00-00	
Company	Berecxco, LLC	
Well	Shelor #1-34	
Field	Wildcat	
County	Ford	State
		Kansas
Location	1233' FSL & 1943' FWL	
Sec: 34	Twp: 29S	Rge: 24W
Permanent Datum	Ground Level	Elevation 2588
Log Measured From	Kelly Bushing	13 Ft. Above Perm. Datum
Drilling Measured From	Kelly Bushing	
		K.B. 2601 D.F. 2588 G.L. 2588

Date	11/19/2012
Run Number	Two
Depth Driller	5500
Depth Logger	5502
Bottom Logged Interval	5501
Top Log Interval	3500
Casing Driller	8.625 @ 690
Casing Logger	686
Bit Size	7.875
Type Fluid in Hole	Chemical
Salinity, ppm CL	14800
Density / Viscosity	9.5 49
pH / Fluid Loss	9.5 17.2
Source of Sample	Flowline
Rm @ Meas. Temp	0.24 @ 58
Rmf @ Meas. Temp	0.18 @ 58
Rmc @ Meas. Temp	0.32 @ 58
Source of Rmf / Rmc	Charts
Rm @ BHT	0.10 @ 133
Operating Rig Time	5 Hours
Max Rec. Temp. F	133
Equipment Number	91
Location	Hays
Recorded By	D. Schmidt
Witnessed By	David Gould

<<< Fold Here >>>

All interpretations are opinions based on inferences from electrical or other measurements and we cannot and do not guarantee the accuracy or correctness of any interpretation, and we shall not, except in the case of gross or willful negligence on our part, be liable or responsible for any loss, costs, damages, or expenses incurred or sustained by anyone resulting from any interpretation made by any of our officers, agents or employees. These interpretations are also subject to our general terms and conditions set out in our current Price Schedule.

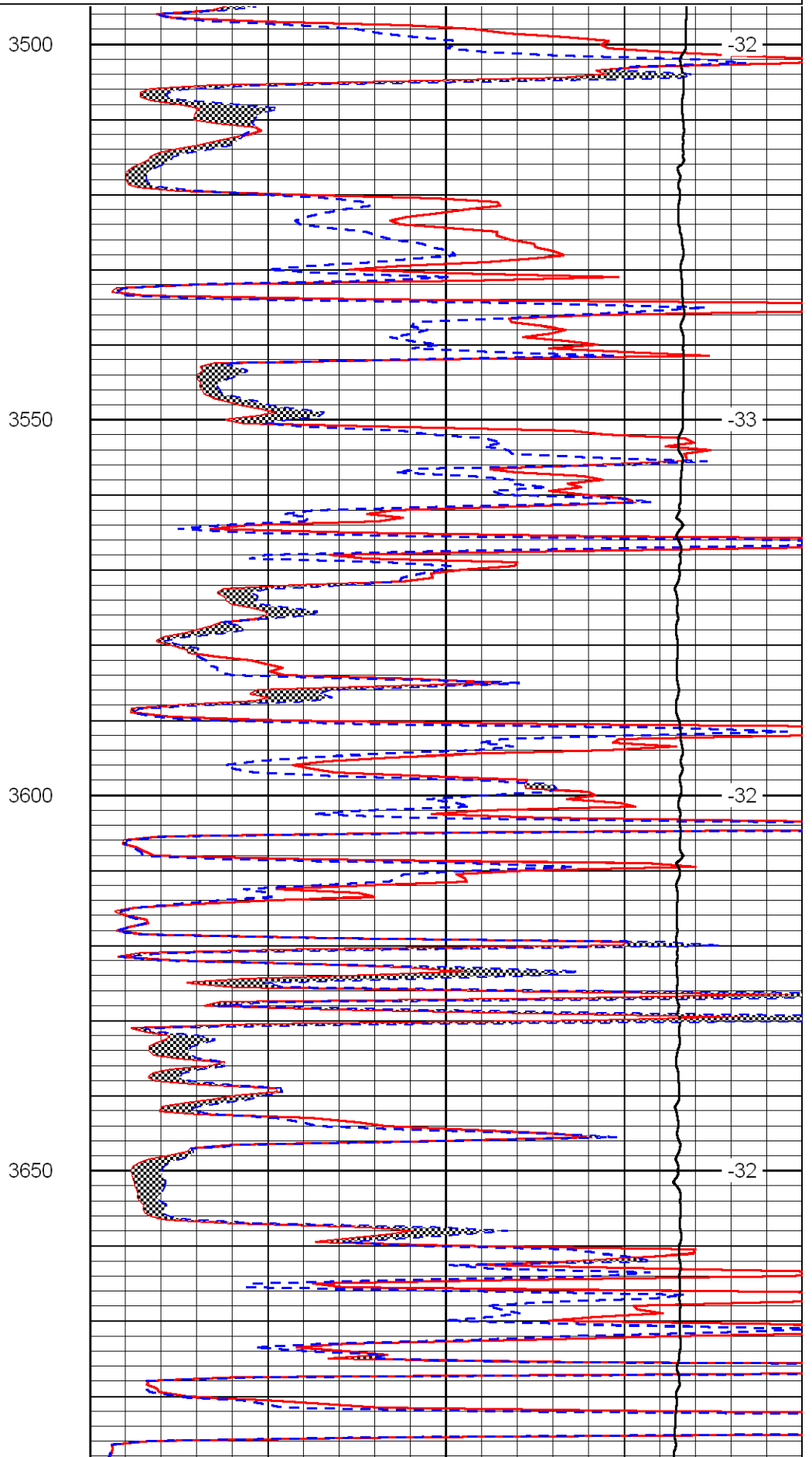
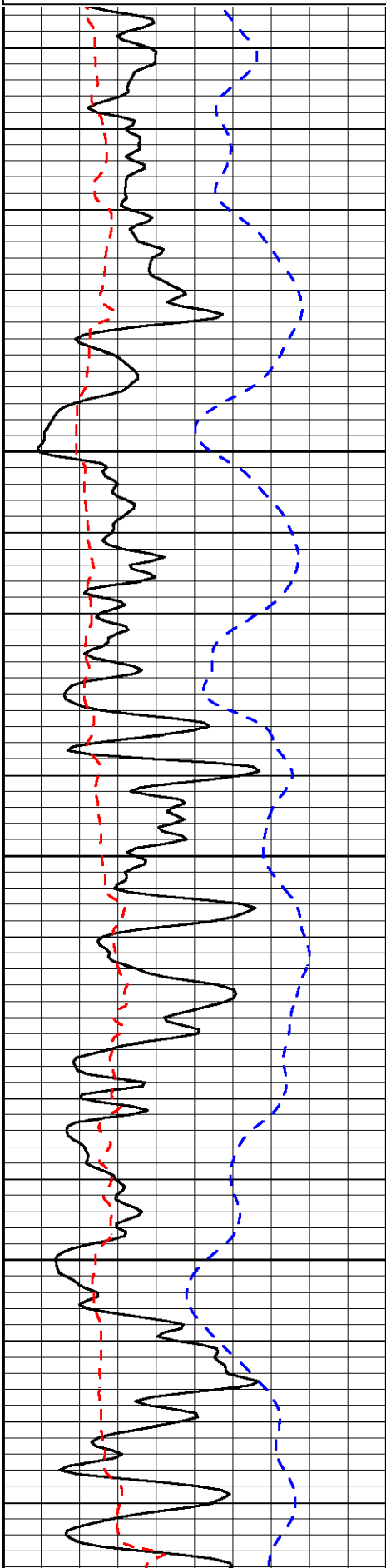
Comments

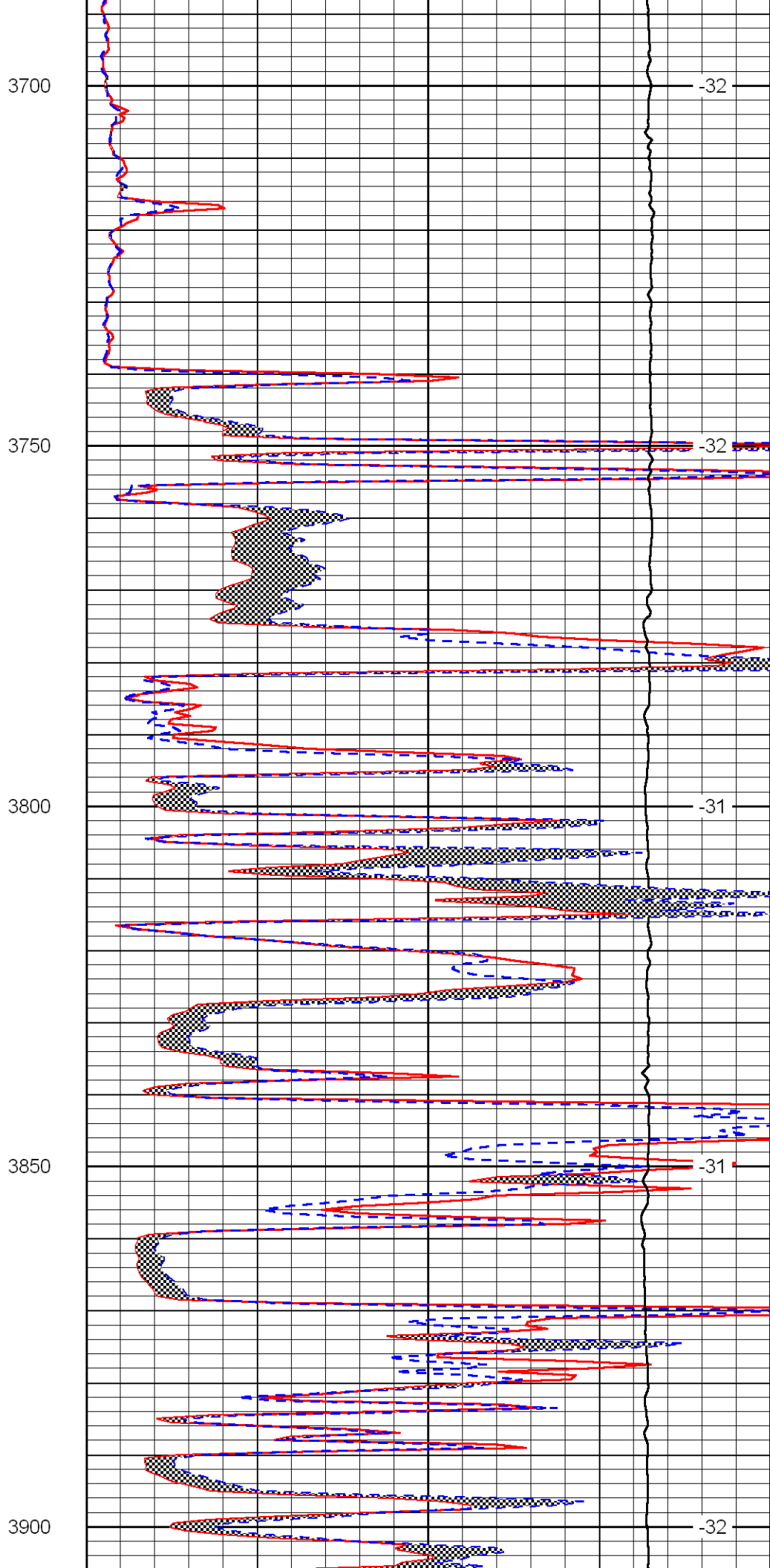
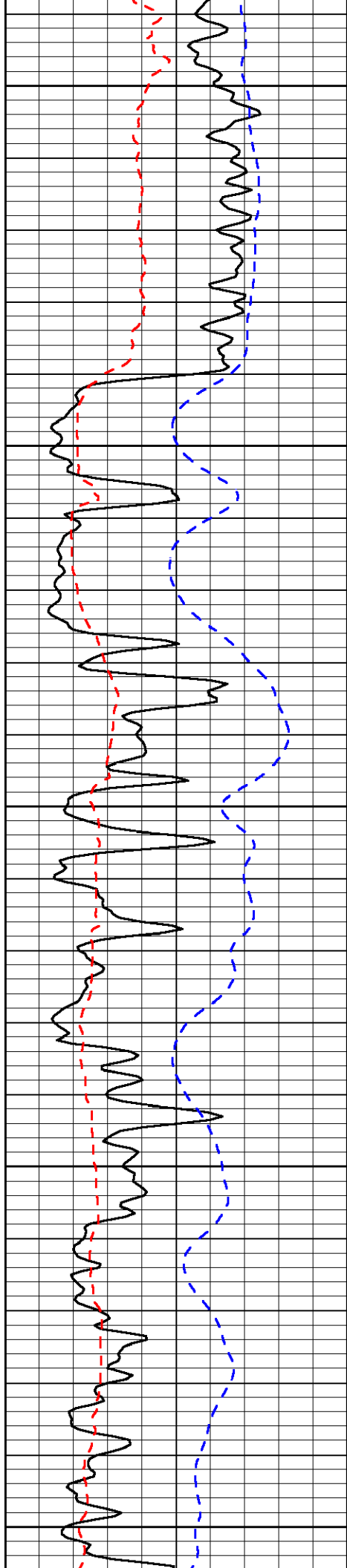
Thank you for using Log-Tech, Inc.
 (785) 625-3858
 Bloom,
 3 West to Rd 115, 1/4 North,
 East into

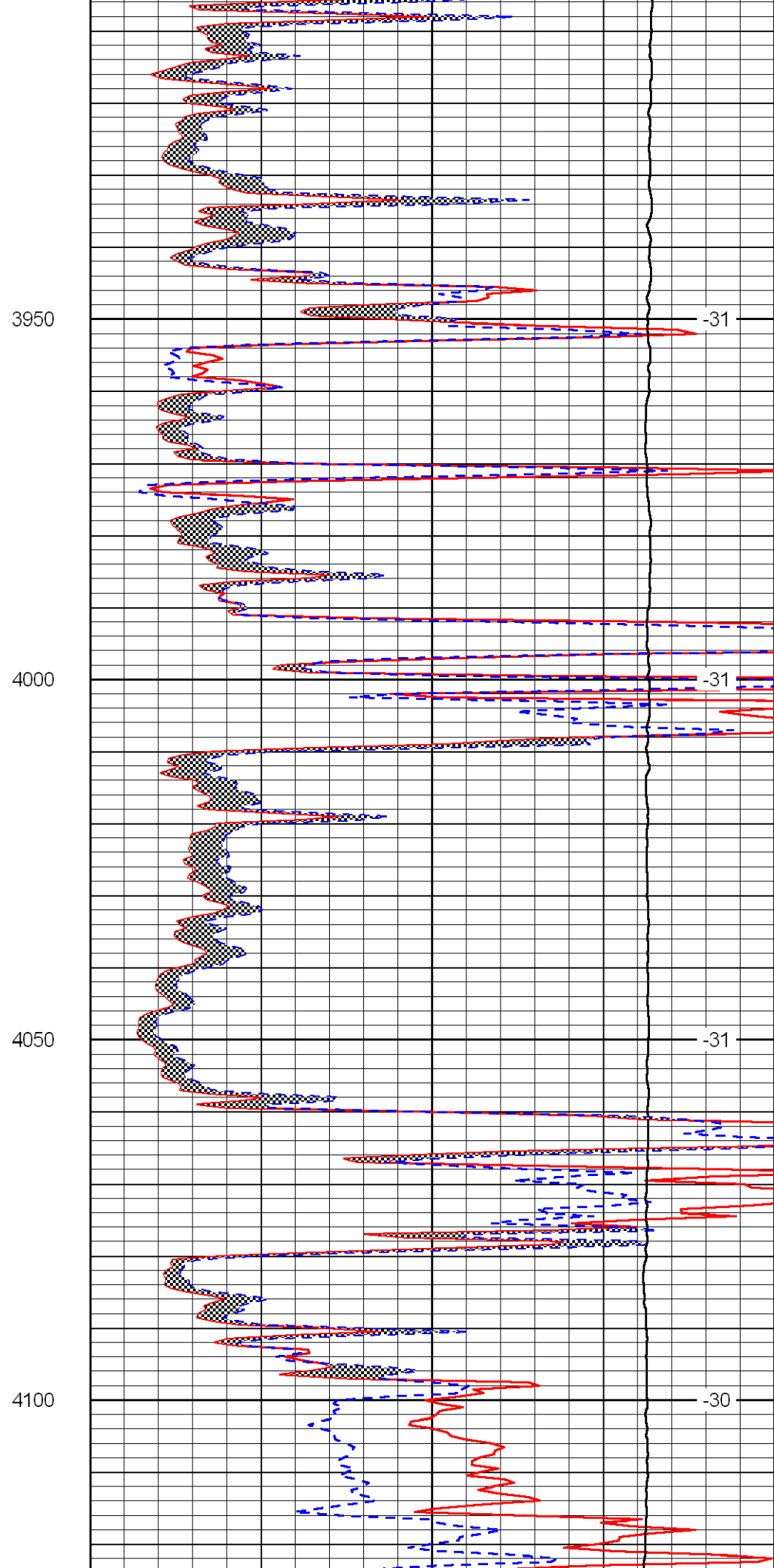
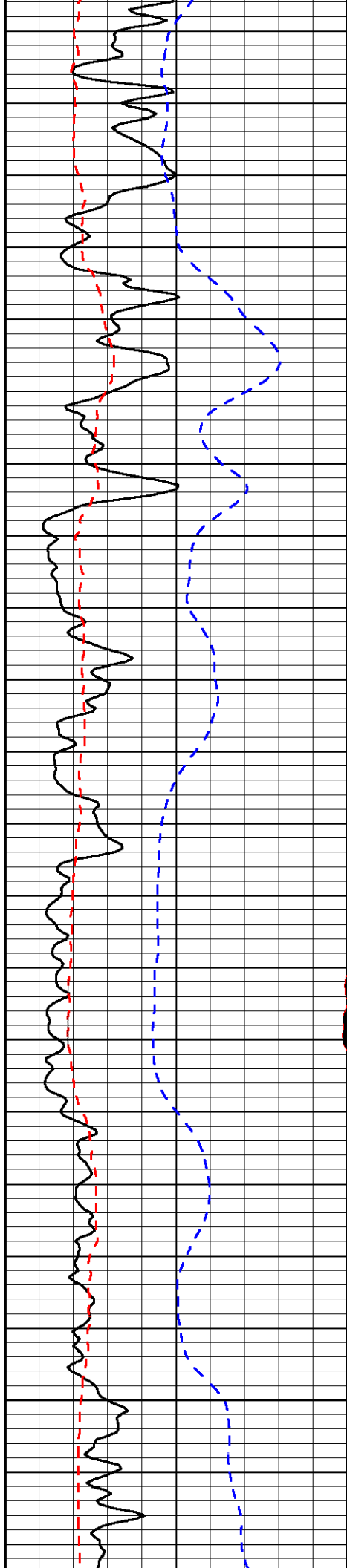
Database File: berexco_11192012hd.db
 Dataset Pathname: dil/brxstack
 Presentation Format: micro
 Dataset Creation: Tue Nov 20 00:52:04 2012
 Charted by: Depth in Feet scaled 1:240

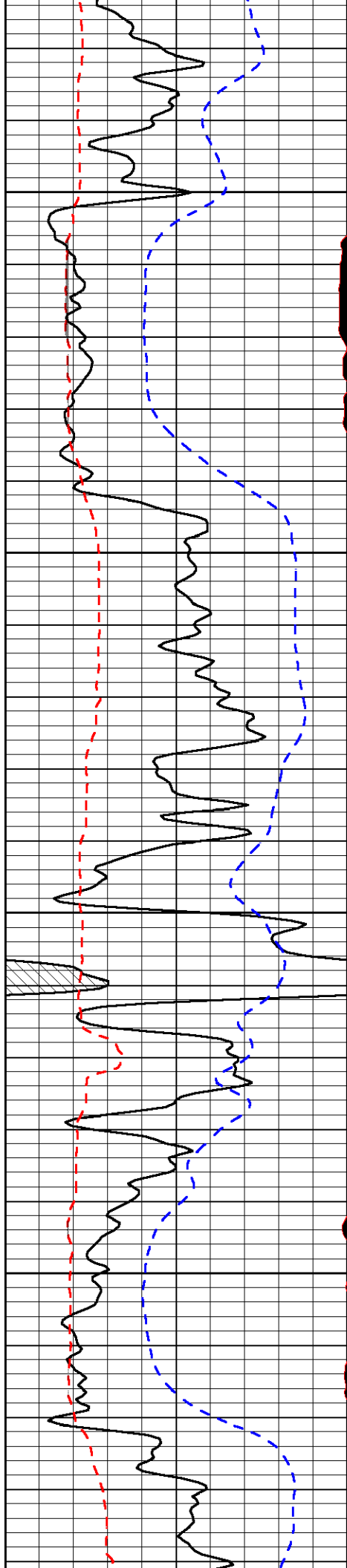
0	Gamma Ray	150
6	MCAL (GAPI)	16
2.875	Mud Cake (GAPI)	7.875
-200	SP	0

0	Micro Inverse 1 X 1	40
0	Micro Normal 2"	40
10000	Line Weight	0
	LSPD	







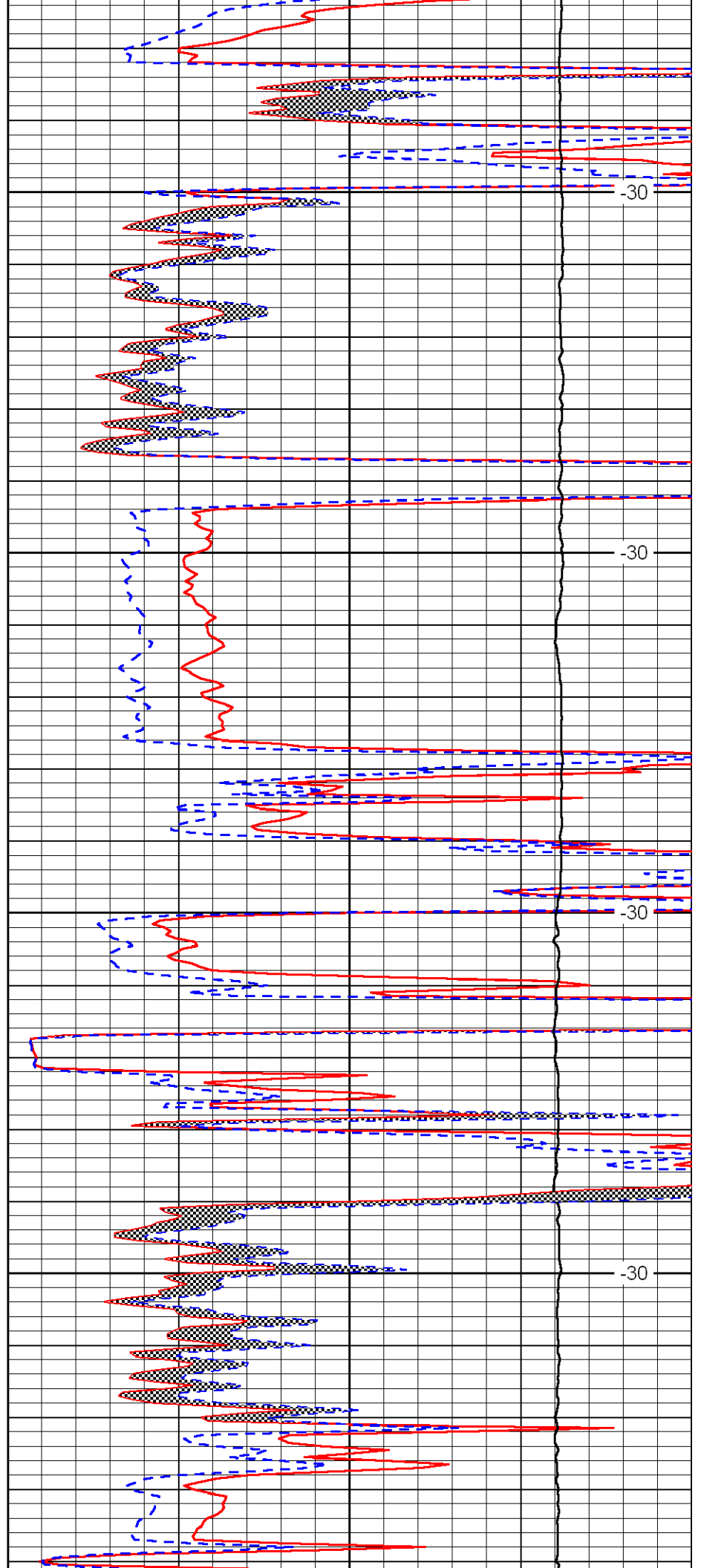


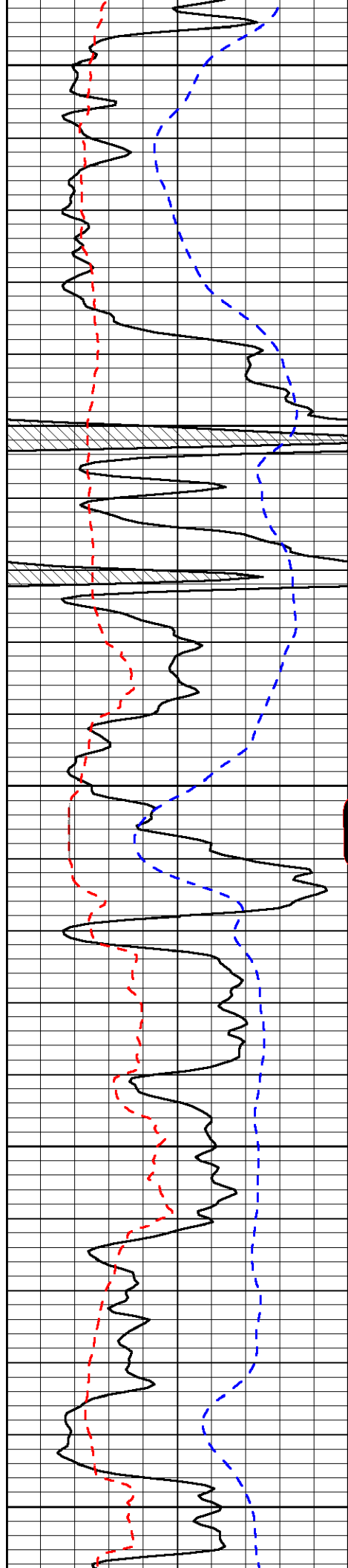
4150

4200

4250

4300





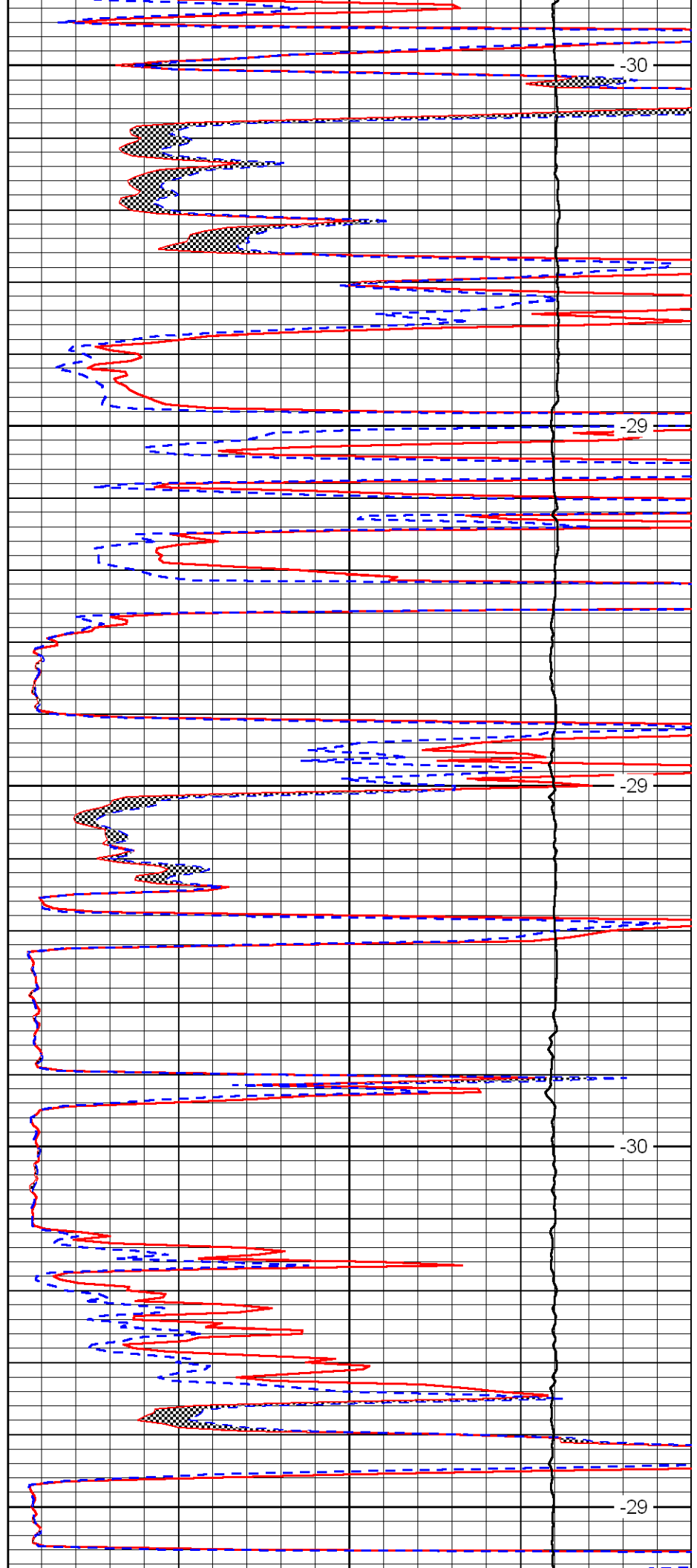
4350

4400

4450

4500

4550



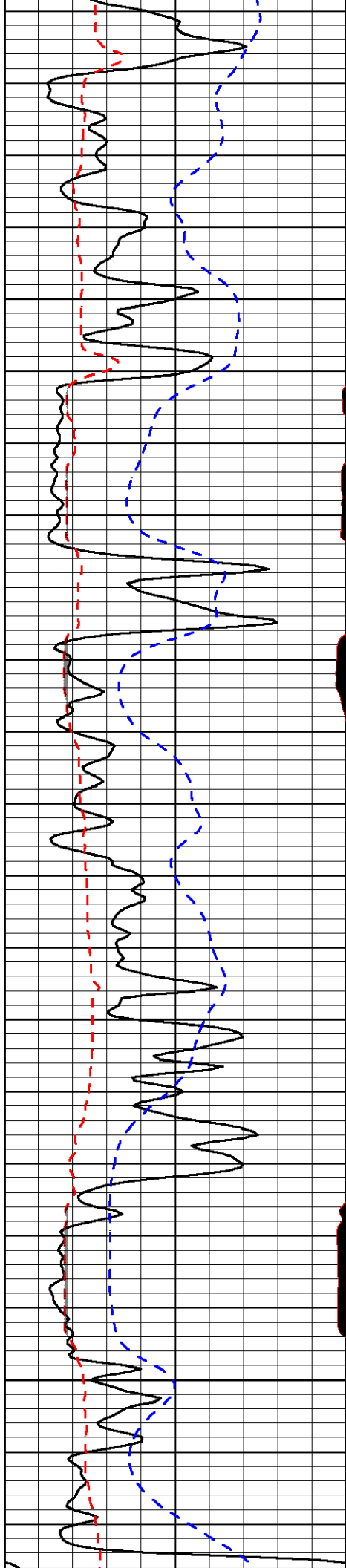
-30

-29

-29

-30

-29

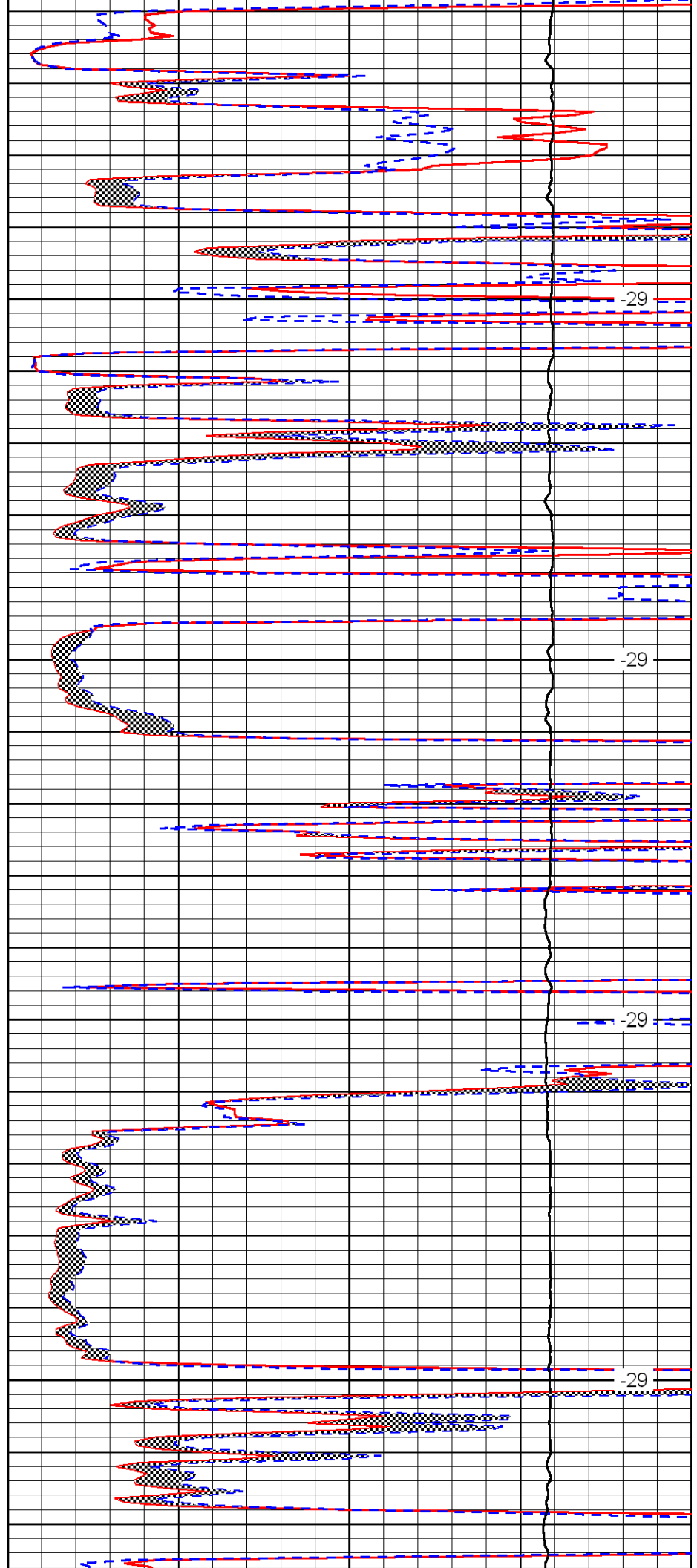


4600

4650

4700

4750

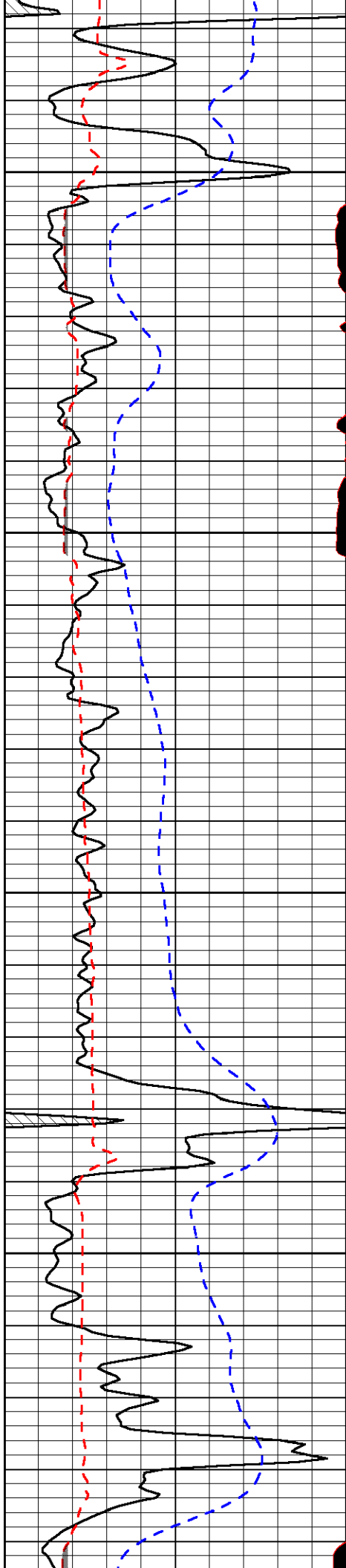


-29

-29

-29

-29

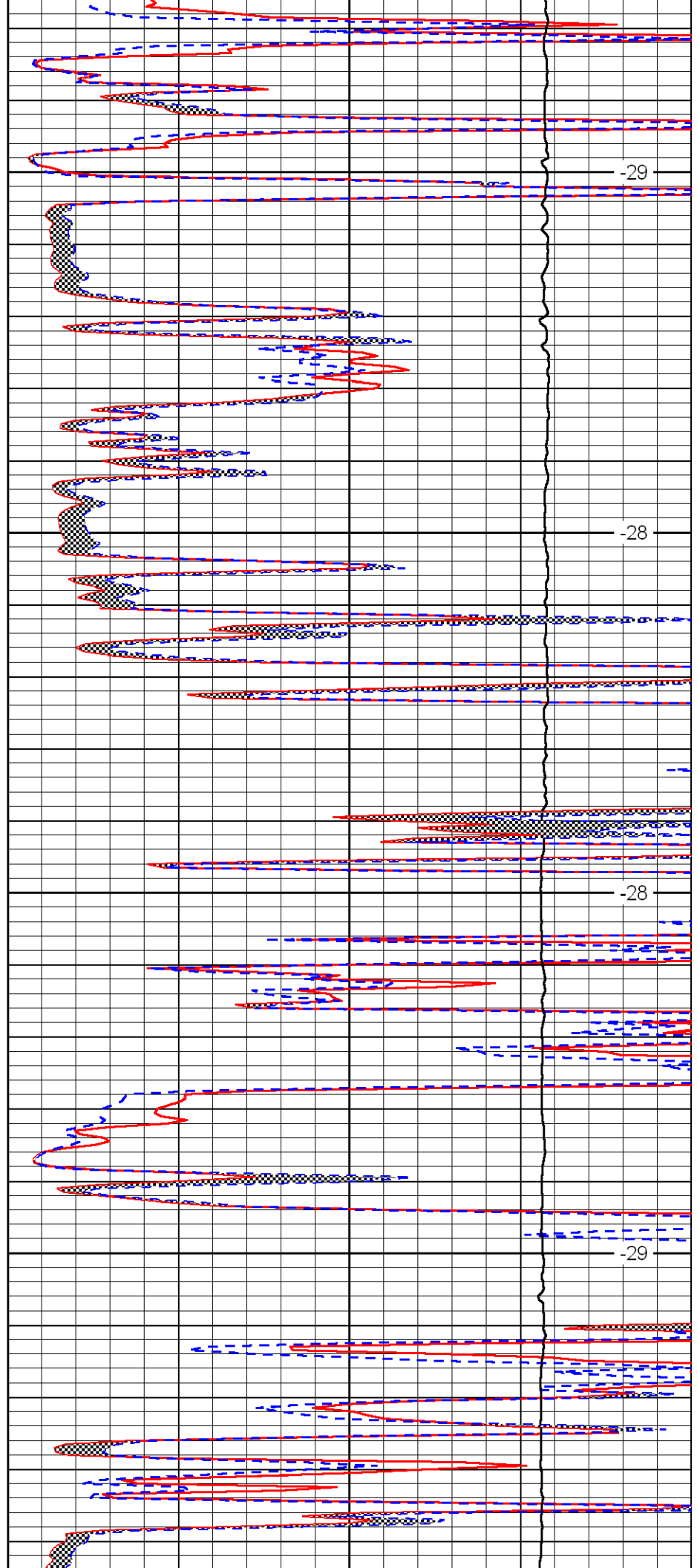


4800

4850

4900

4950

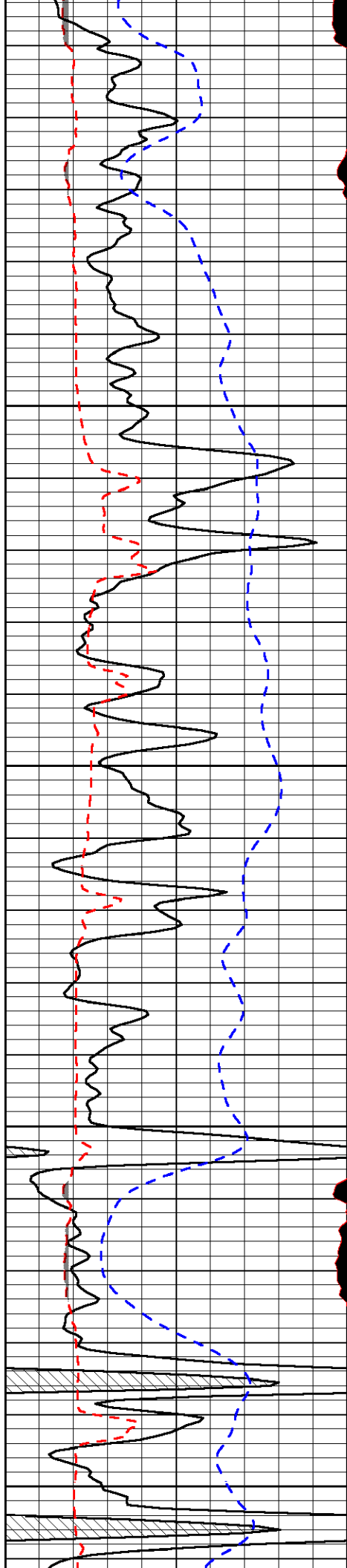


-29

-28

-28

-29



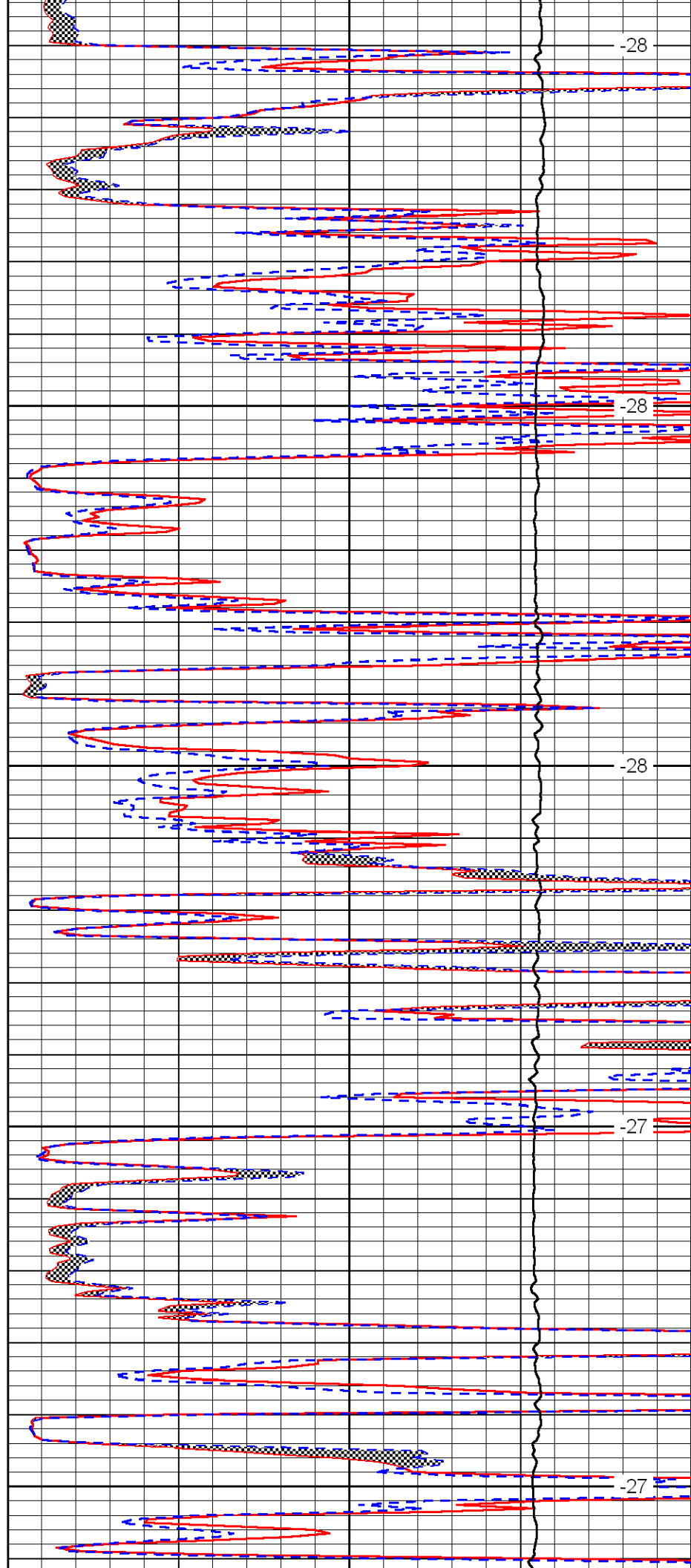
5000

5050

5100

5150

5200



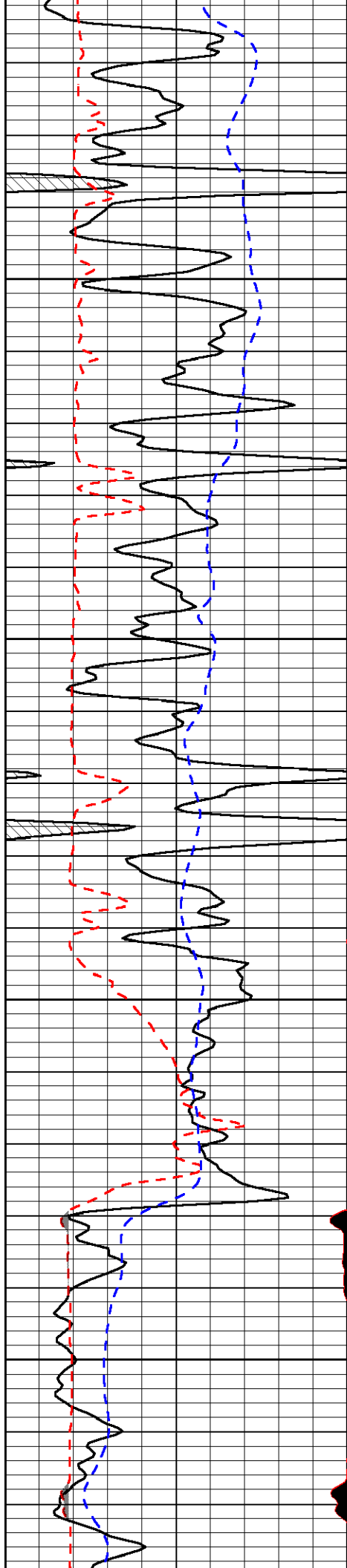
-28

-28

-28

-27

-27

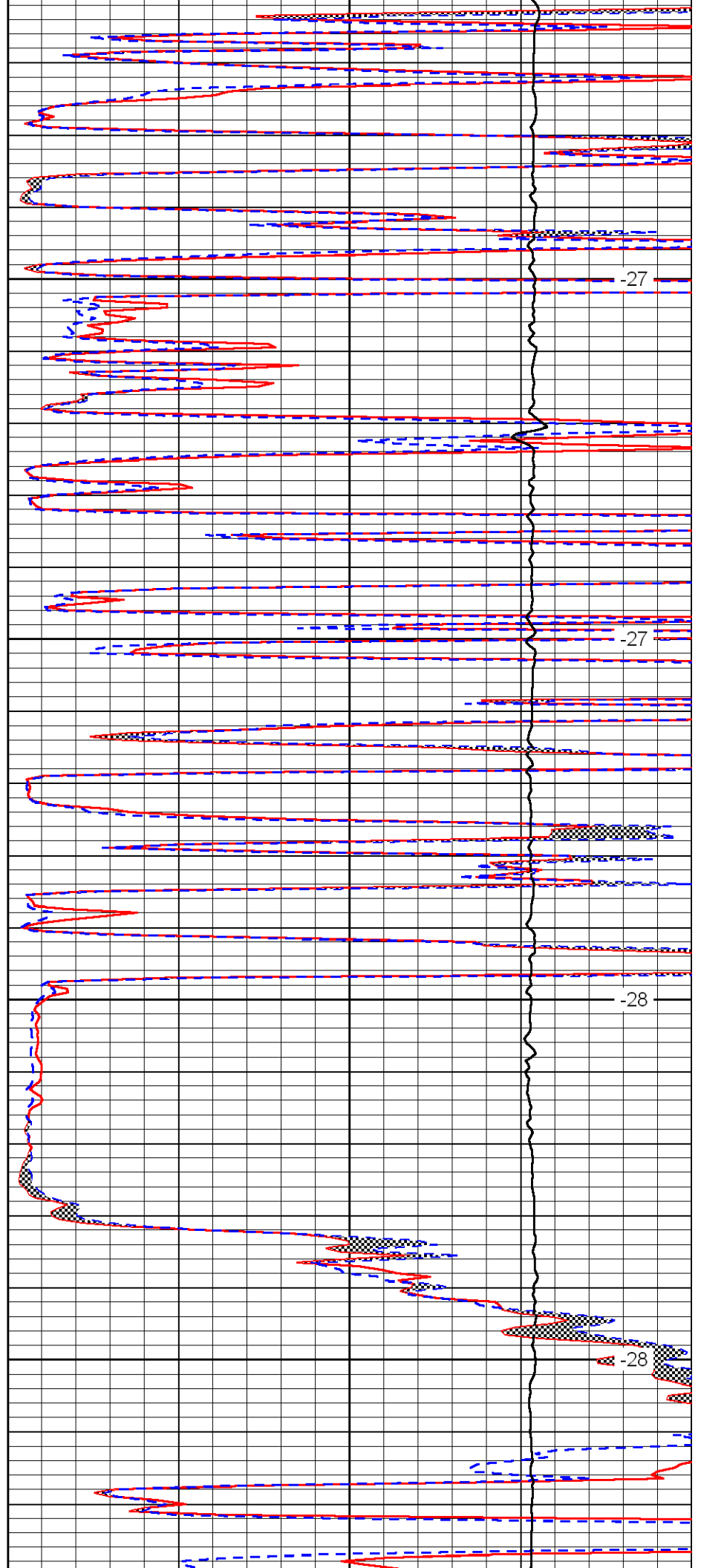


5250

5300

5350

5400

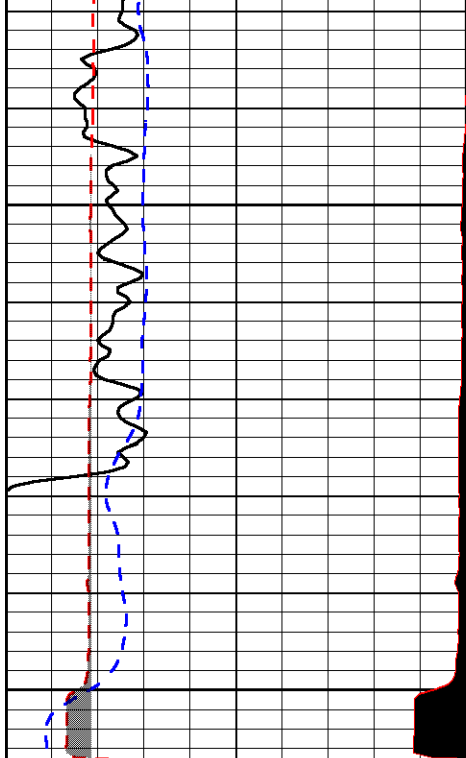


-27

-27

-28

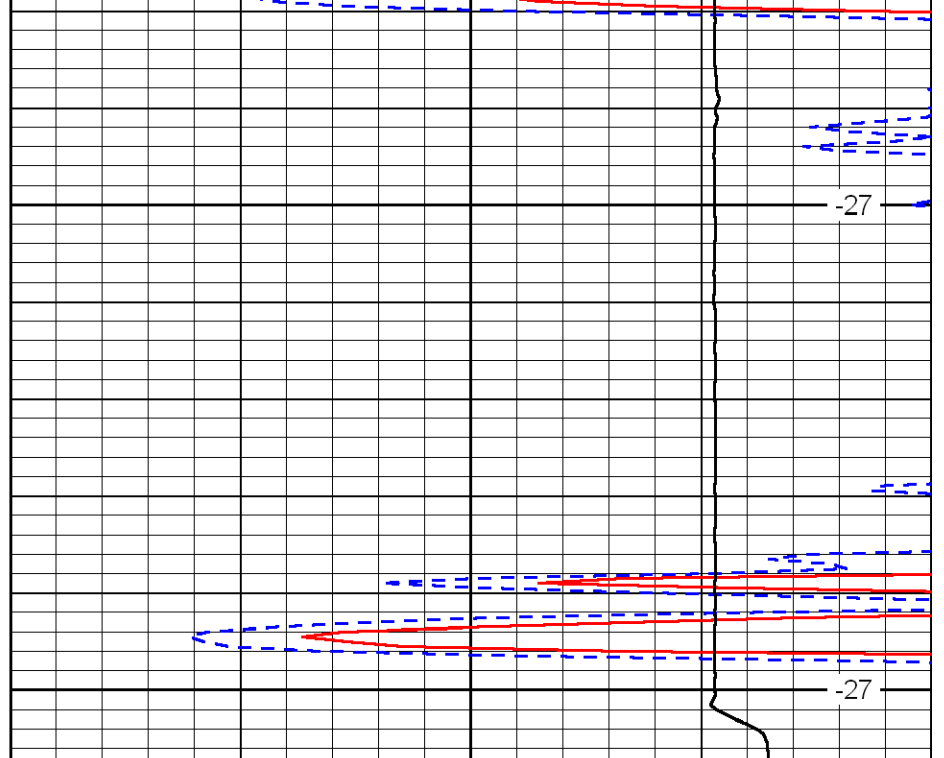
-28



5450

5500

0	Gamma Ray	150
6	MCAL (GAPI)	16
2.875	Mud Cake (GAPI)	7.875
-200	SP	0



-27

-27

0	Micro Inverse 1 X 1	40
0	Micro Normal 2"	40
10000	Line Weight	0

LSPD