



Dual Compensated  
Porosity Log

DIGITAL LOG (785) 625-3858

API No. 15-159-22,636-00-00

Company American Warrior, Inc.  
Well Buckley No 4-18  
Field Chase - Silica  
County Rice State Kansas

Location SE NE NE NW  
600' FNL & 2,500' FWL

Sec: 18 Twp: 19 S Rge: 9 W

Other Services  
DIL  
MEL

Permanent Datum Ground Level Elevation 1735  
Log Measured From Kelly Bushing 8 Ft. Above Perm. Datum  
Drilling Measured From Kelly Bushing

K.B. 1743  
D.F. 1735  
G.L. 1735

Date 2/10/2011

Run Number One

Type Log CNL / CDL

Depth Driller 3400

Depth Logger 3398

Bottom Logged Interval 3377

Top Logged Interval 2500

Type Fluid In Hole Chemical

Salinity, PPM CL 5400

Density 9.2

Level Full

Max. Rec. Temp. F 110

Operating Rig Time 4 Hours

Equipment -- Location 10 Days

Recorded By Jim Schuler

Witnessed By Jim Musgrove

Borehole Record				Casing Record			
Run No.	Bit	From	To	Size	Wgt.	From	To
1	12.25	00	314	8.625	24#	00	314
2	7.875	314	3400				

<<< Fold Here >>>

All interpretations are opinions based on inferences from electrical or other measurements and we cannot and do not guarantee the accuracy or correctness of any interpretation, and we shall not, except in the case of gross or willful negligence on our part, be liable or responsible for any loss, costs, damages, or expenses incurred or sustained by anyone resulting from any interpretation made by any of our officers, agents or employees. These interpretations are also subject to our general terms and conditions set out in our current Price Schedule.

Comments

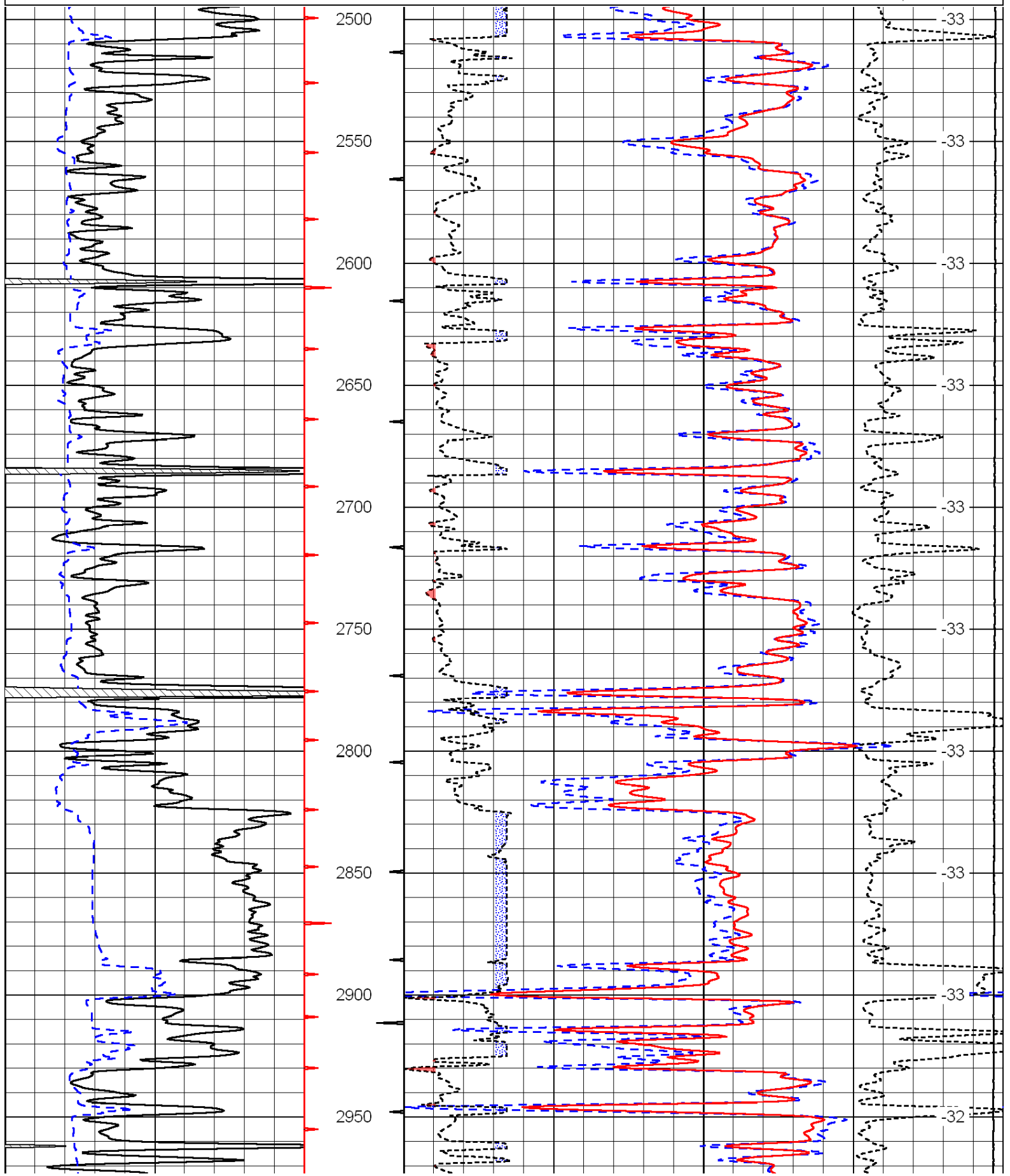
Thank you for using Log-Tech, Inc.  
(785) 625-3858

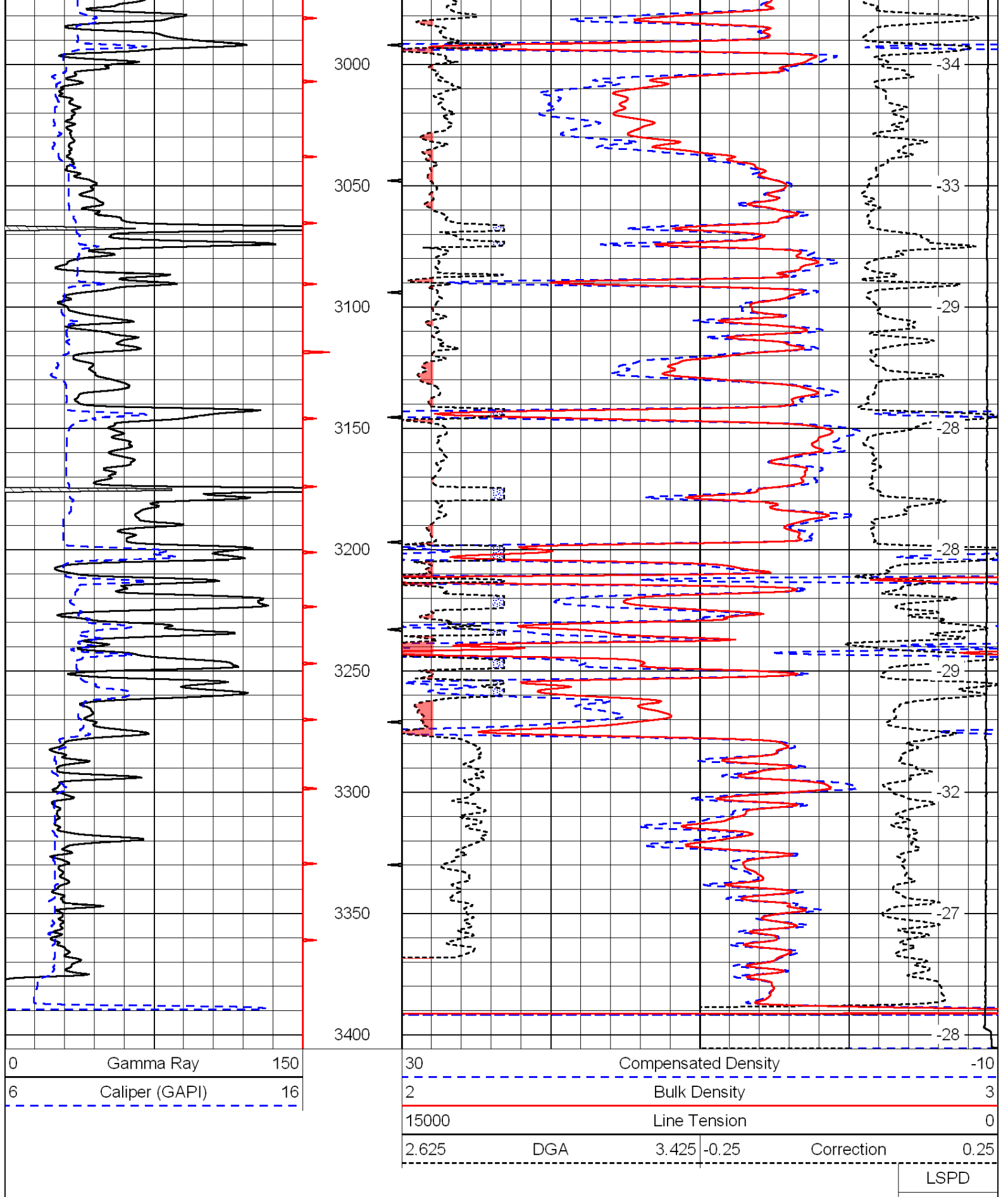
Chase, Kansas  
4 Miles North, 1/2 West, South Into

Database File: c:\warrior\data\amwar\_buckley no 4-18\amwar.db  
 Dataset Pathname: dil/amstk  
 Presentation Format: cdl  
 Dataset Creation: Thu Feb 10 21:09:53 2011  
 Charted by: Depth in Feet scaled 1:600

0	Gamma Ray	150
6	Caliper (GAPI)	16

30	Compensated Density		-10
2	Bulk Density		3
15000	Line Tension		0
2.625	DGA	3.425	-0.25
			Correction
			0.25
LSPD			





Database File: c:\warrior\data\amwar\_buckley no 4-18\amwar.db  
 Dataset Pathname: dil/amstk  
 Presentation Format: cndlspec  
 Dataset Creation: Thu Feb 10 21:09:53 2011  
 Charted by: Depth in Feet scaled 1:240

