



DIGITAL LOG (785) 625-3858

Dual Induction Log

API No. 15-159-22,636-00-00

Company American Warrior, Inc.
 Well Buckley No 4-18
 Field Chase - Silica
 County Rice State Kansas

Location SE NE NE NW
 600' FNL & 2,500' FWL

Other Services
 CNL/CDL
 MEL

Permanent Datum Ground Level Elevation 1735
 Log Measured From Kelly Bushing 8 Ft. Above Perm. Datum
 Drilling Measured From Kelly Bushing

Sec: 18 Twp: 19 S Rge: 9 W

Elevation
 K.B. 1743
 D.F. 1735
 G.L. 1735

Date	2/10/2011
Run Number	One
Depth Driller	3400
Depth Logger	3398
Bottom Logged Interval	3397
Top Log Interval	300
Casing Driller	8.625 @ 314
Casing Logger	308
Bit Size	7.875
Type Fluid in Hole	Chemical
Salinity, ppm CL	5400
Density / Viscosity	9.2 57
pH / Fluid Loss	11.5 8.0
Source of Sample	Flowline
Rm @ Meas. Temp	.83 @ 49
Rmf @ Meas. Temp	.62 @ 49
Rmc @ Meas. Temp	1.12 @ 49
Source of Rmf / Rmc	Charts
Rm @ BHT	.37 @ 110
Operating Rig Time	4 Hours
Max Rec. Temp. F	110
Equipment Number	10
Location	Hays
Recorded By	Jim Schuler
Witnessed By	Jim Musgrove

<<< Fold Here >>>

All interpretations are opinions based on inferences from electrical or other measurements and we cannot and do not guarantee the accuracy or correctness of any interpretation, and we shall not, except in the case of gross or willful negligence on our part, be liable or responsible for any loss, costs, damages, or expenses incurred or sustained by anyone resulting from any interpretation made by any of our officers, agents or employees. These interpretations are also subject to our general terms and conditions set out in our current Price Schedule.

Comments

Thank you for using Log-Tech, Inc.
 (785) 625-3858

Chase, Kansas
 4 Miles North, 1/2 West, South Into

Database File: c:\warrior\data\amwar_buckley no 4-18\amwar.db
 Dataset Pathname: dil/amstk
 Presentation Format: dil2in
 Dataset Creation: Thu Feb 10 21:09:53 2011
 Charted by: Depth in Feet scaled 1:600

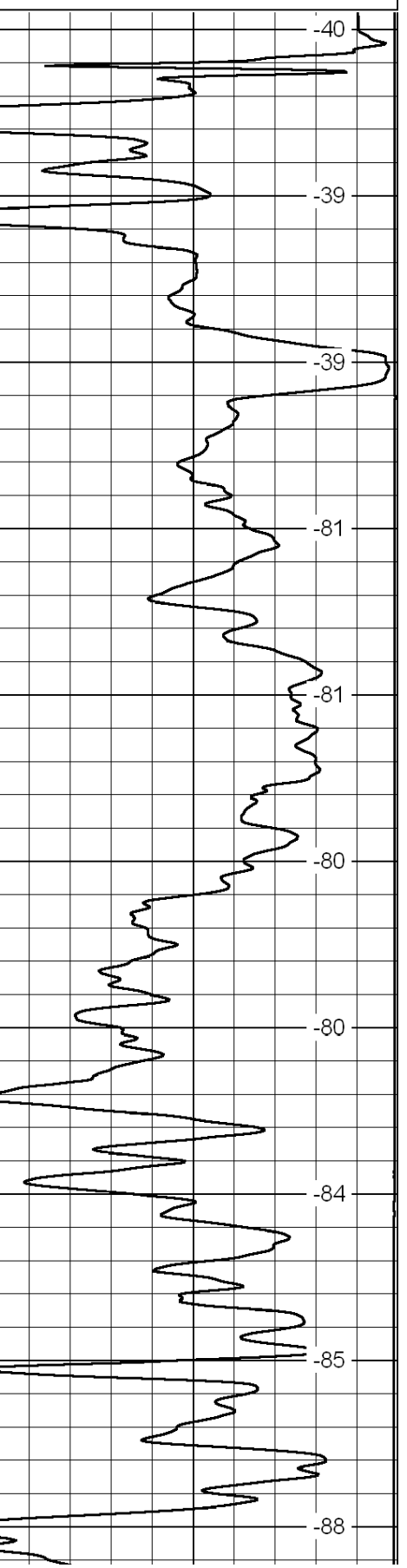
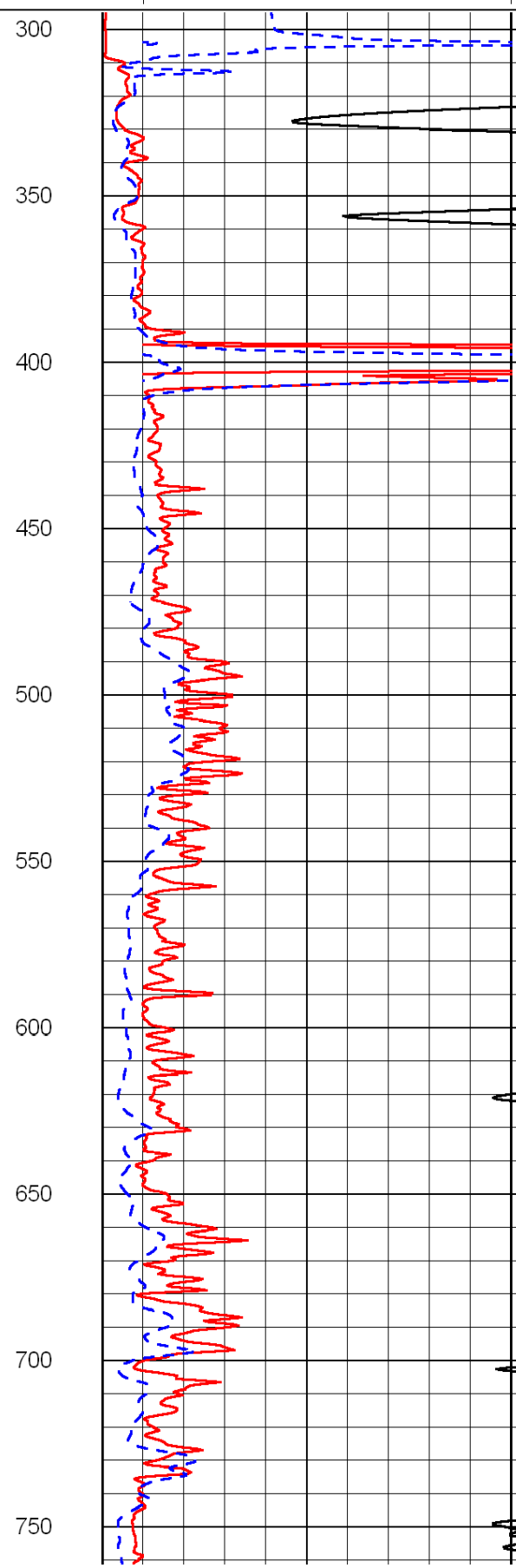
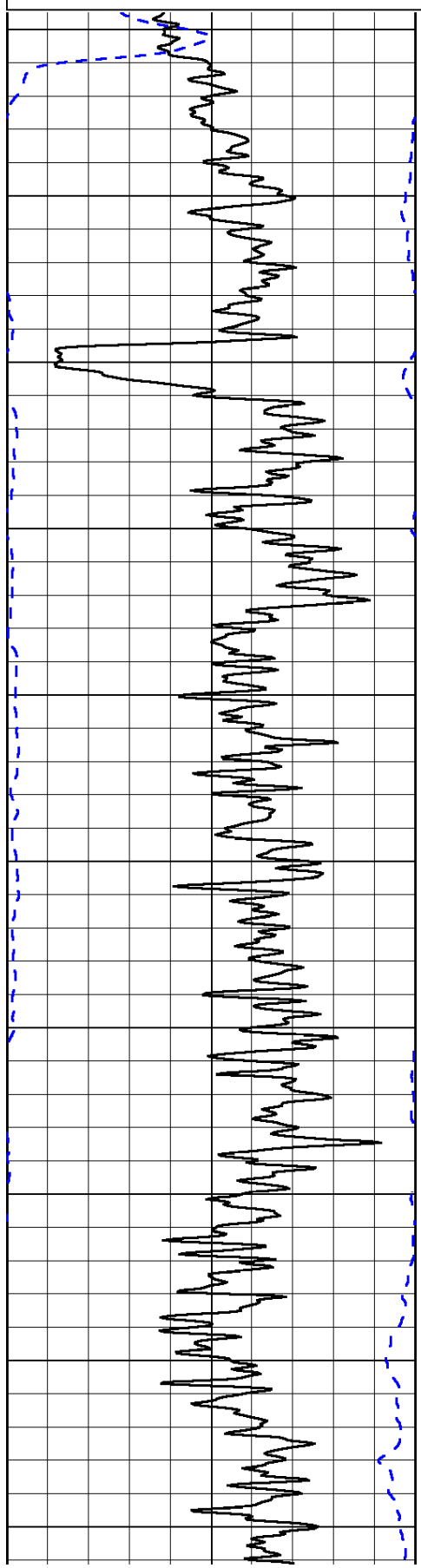
0	Gamma Ray	150
-200	SP (mV)	0

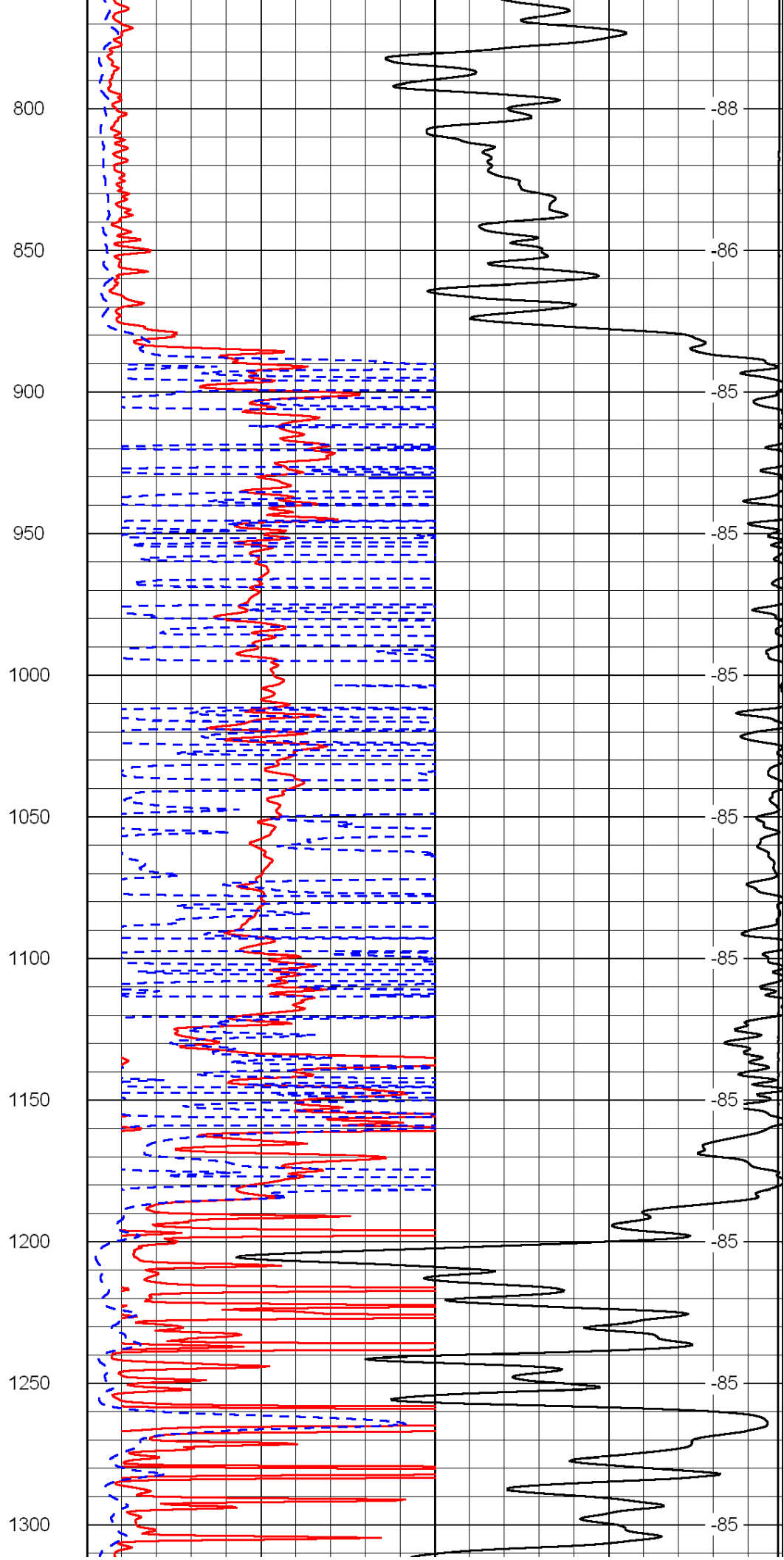
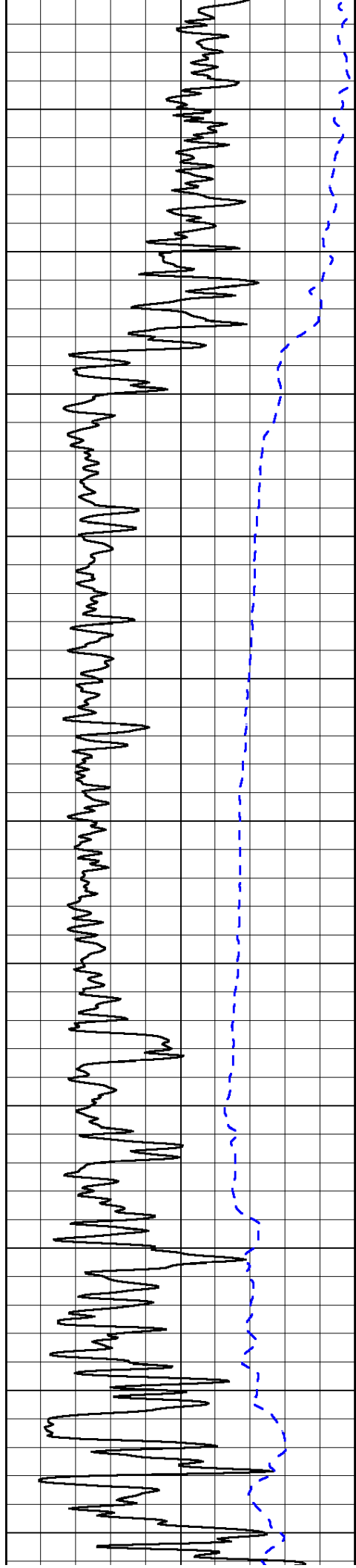
0	Shallow Resistivity	50
0	Deep Resistivity	50

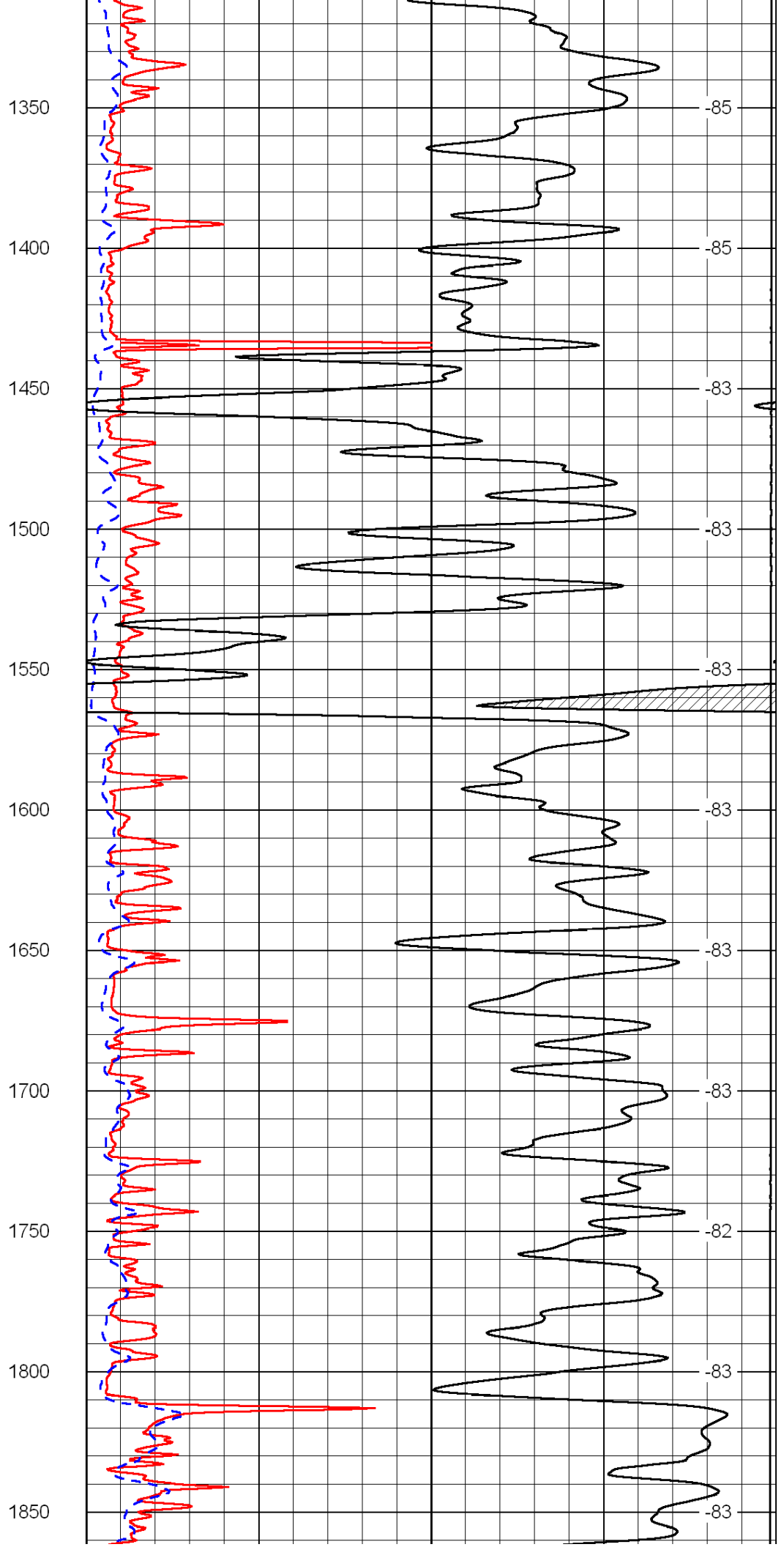
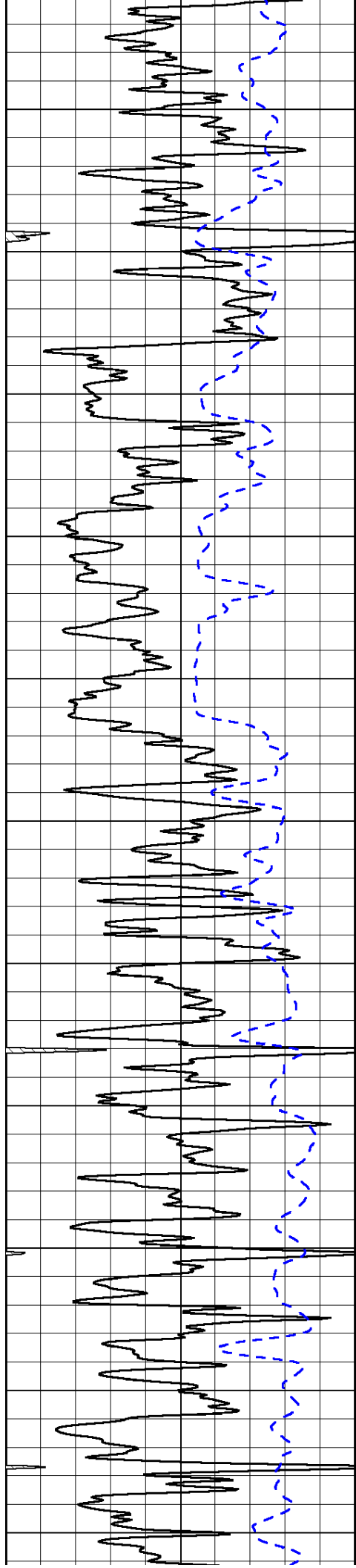
LSPD

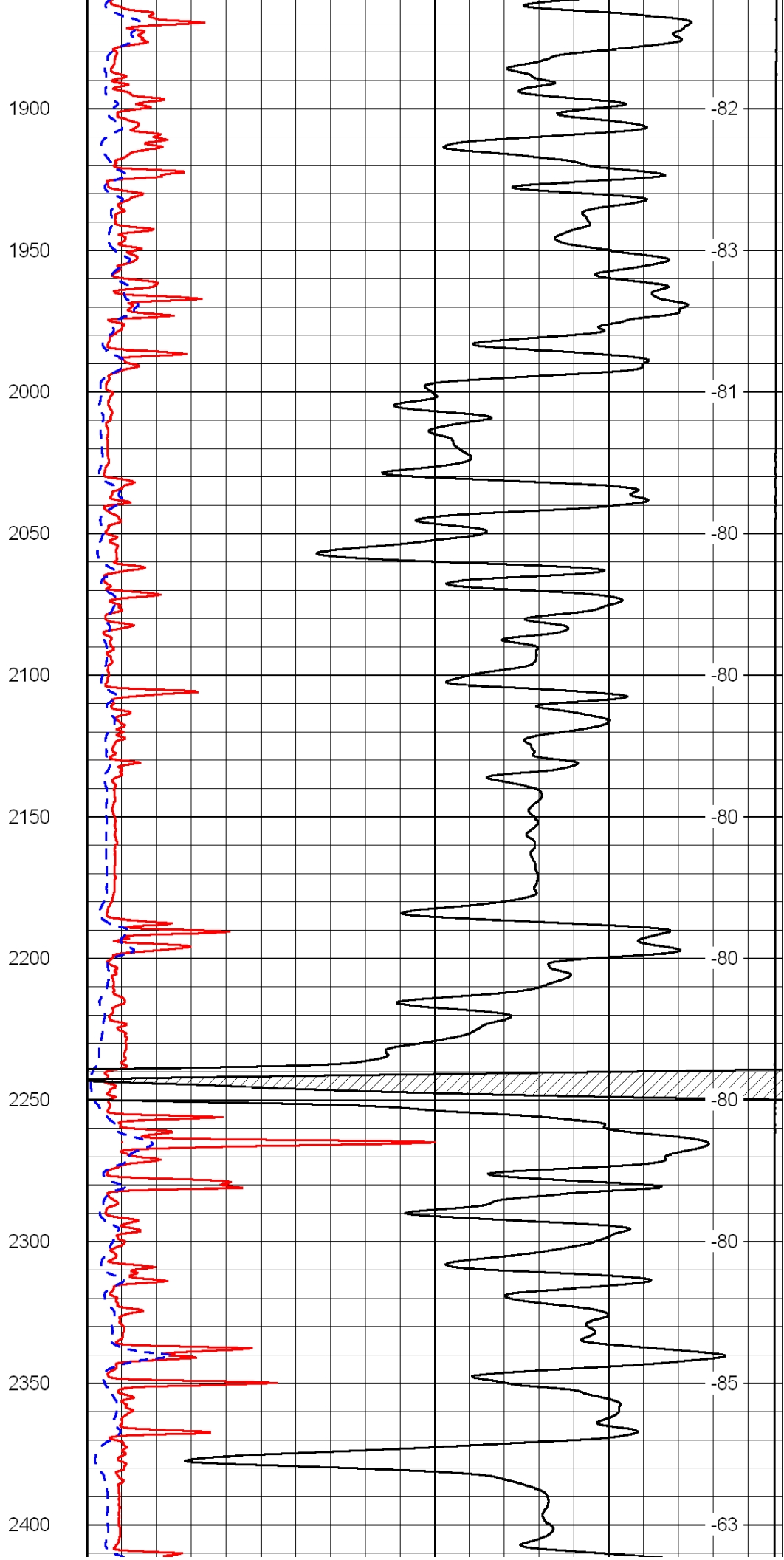
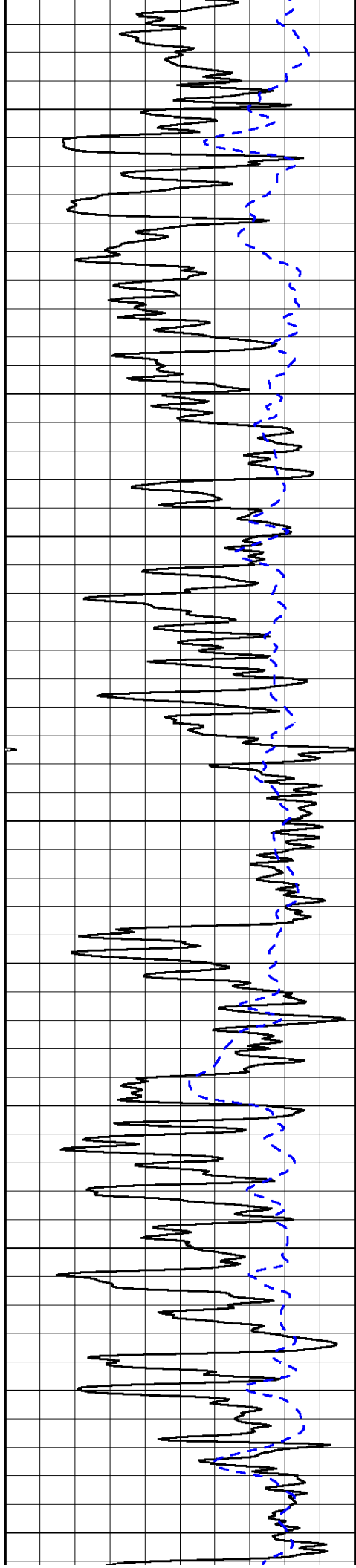
1000	Conductivity	0
15000	Line Tension	0

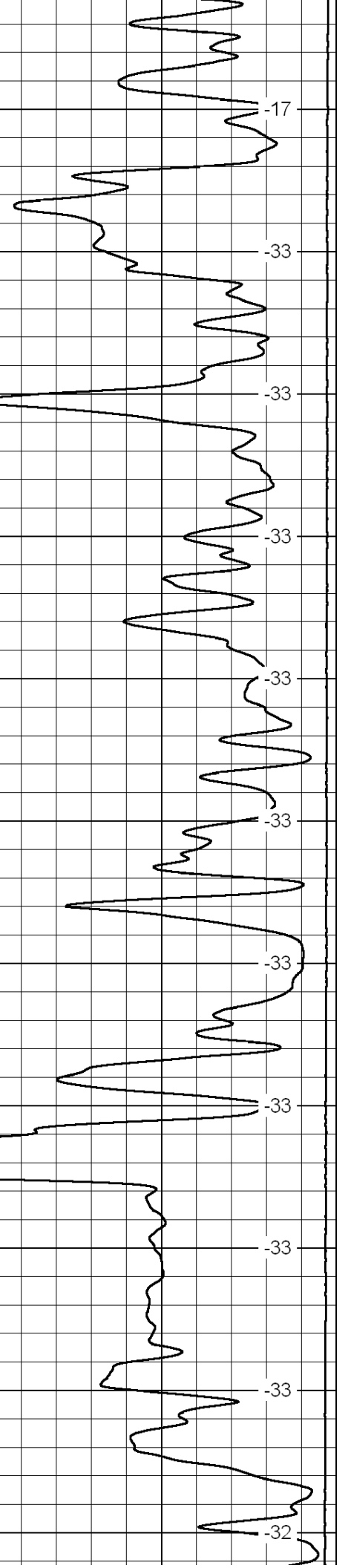
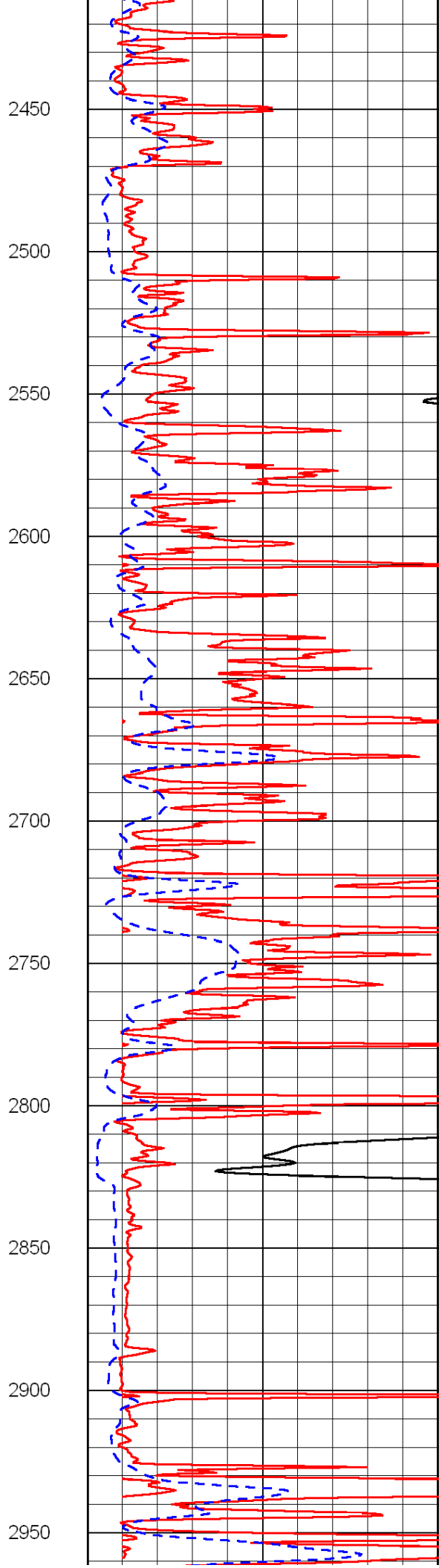
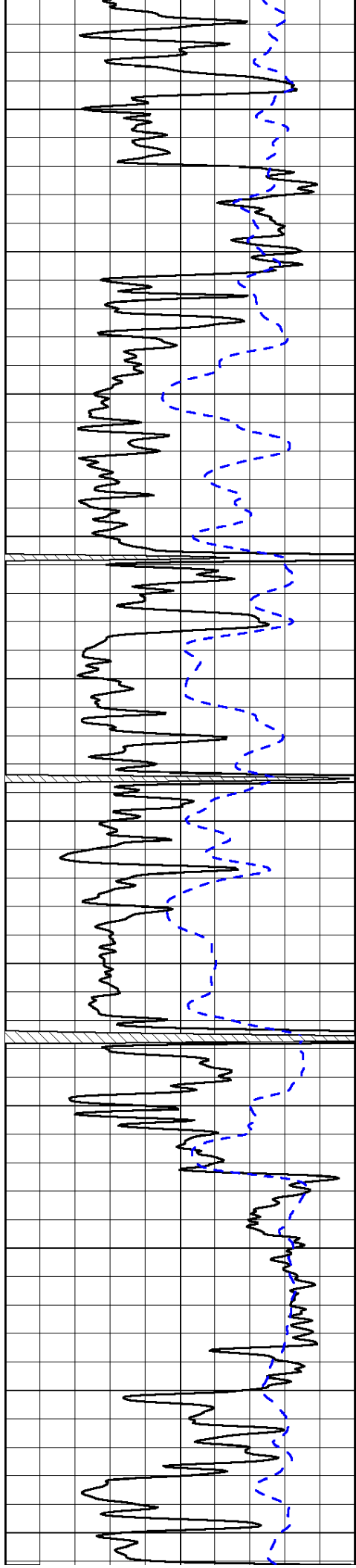
50	Shallow Resistivity	500
50	Deep Resistivity	500

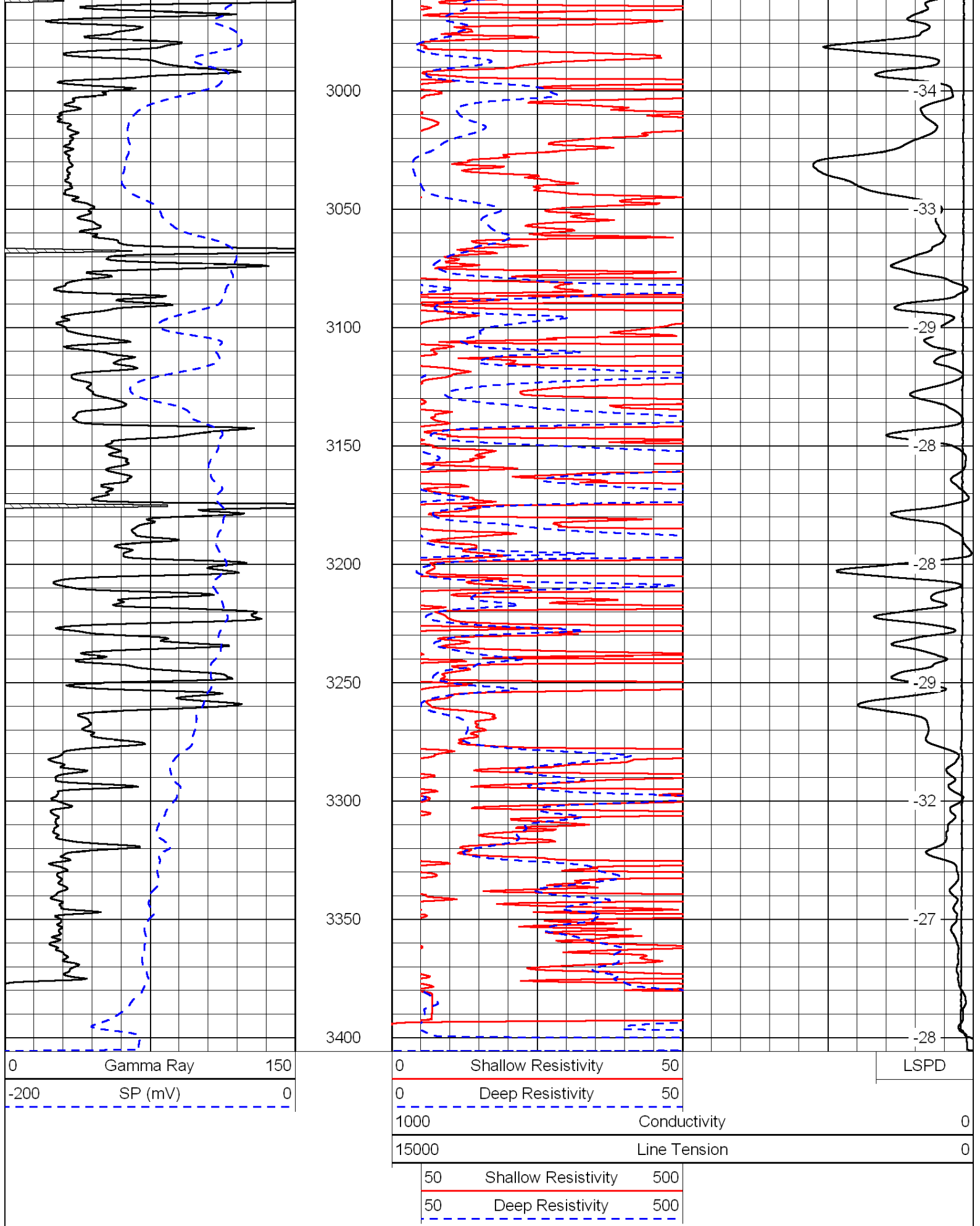










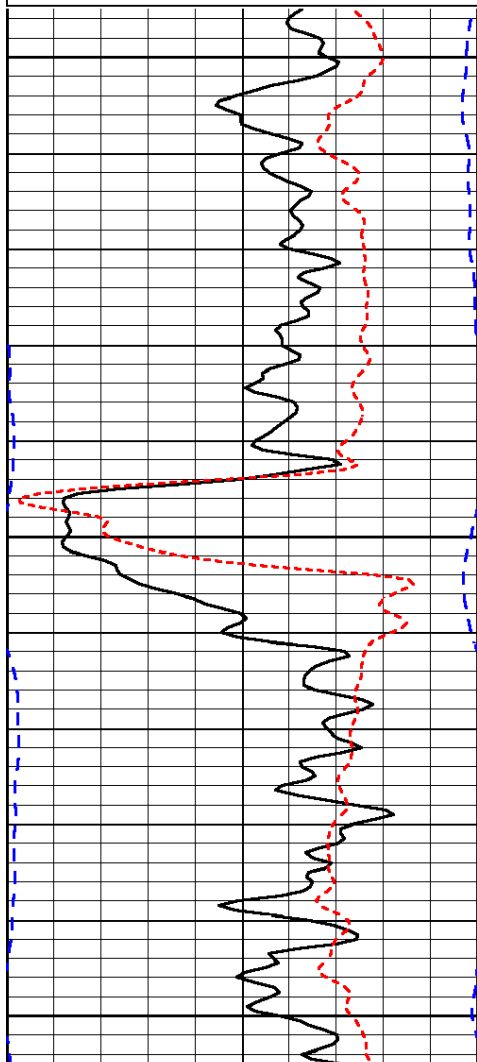


Presentation Format: dil
 Dataset Creation: Thu Feb 10 21:09:53 2011
 Charted by: Depth in Feet scaled 1:240

0	Gamma Ray	150
-200	SP (mV)	0
-160	Rxo / Rt	40

0.2	Deep Resistivity	2000
0.2	Medium Resistivity	2000
0.2	Shallow Resistivity	2000
15000	Line Tension	0

LSPD



350

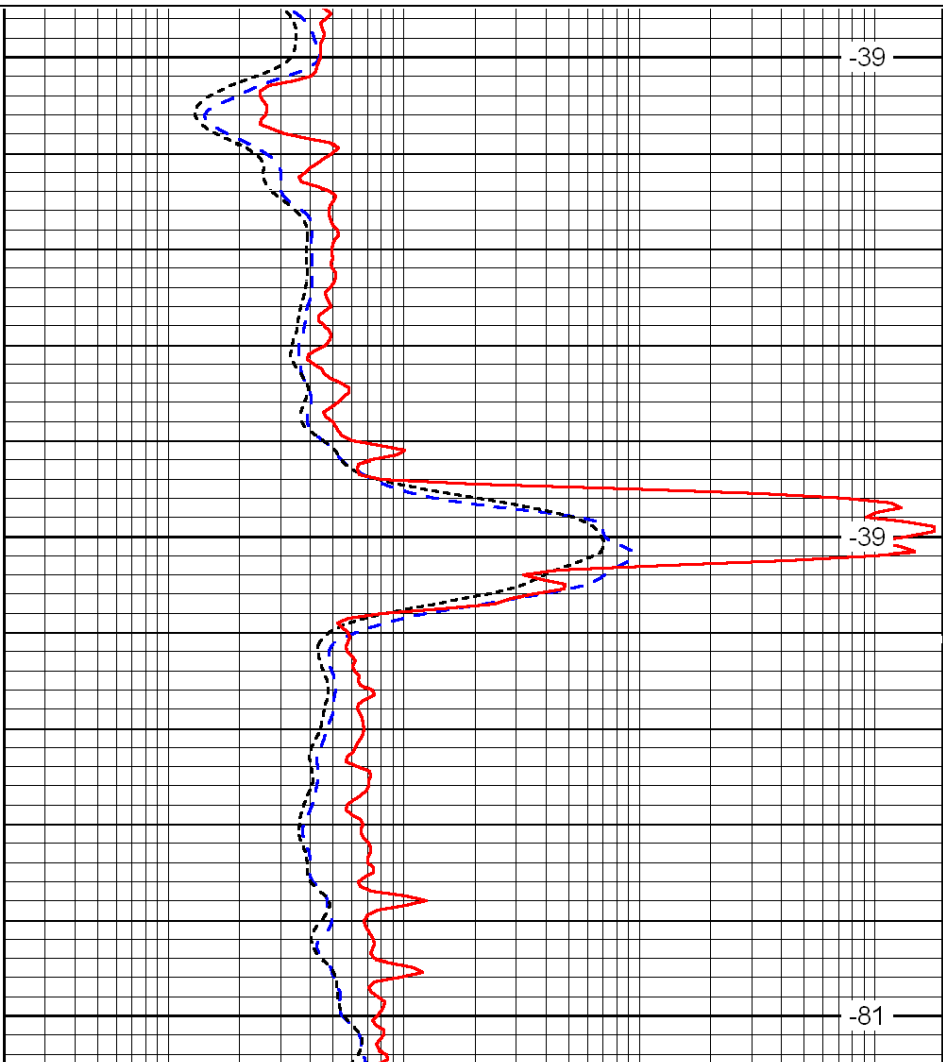
400

450

0	Gamma Ray	150
-200	SP (mV)	0
-160	Rxo / Rt	40

0.2	Deep Resistivity	2000
0.2	Medium Resistivity	2000
0.2	Shallow Resistivity	2000
15000	Line Tension	0

LSPD



-39

-39

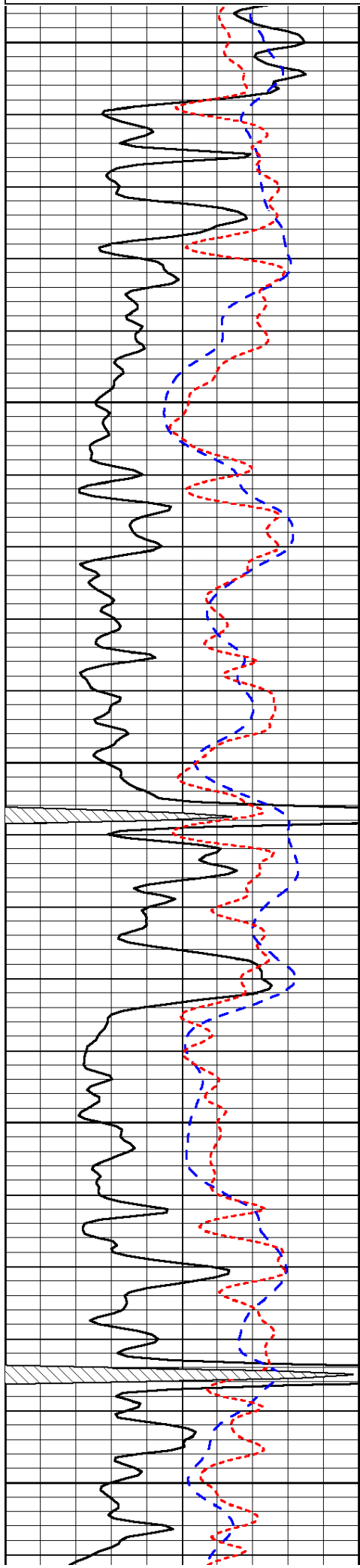
-81

Database File: c:\warrior\data\amwar_buckley no 4-18\amwar.db
 Dataset Pathname: dil/amstk
 Presentation Format: dil
 Dataset Creation: Thu Feb 10 21:09:53 2011
 Charted by: Depth in Feet scaled 1:240

0	Gamma Ray	150
-200	SP (mV)	0
-160	Rxo / Rt	40

0.2	Deep Resistivity	2000
0.2	Medium Resistivity	2000
0.2	Shallow Resistivity	2000
15000	Line Tension	0

LSPD



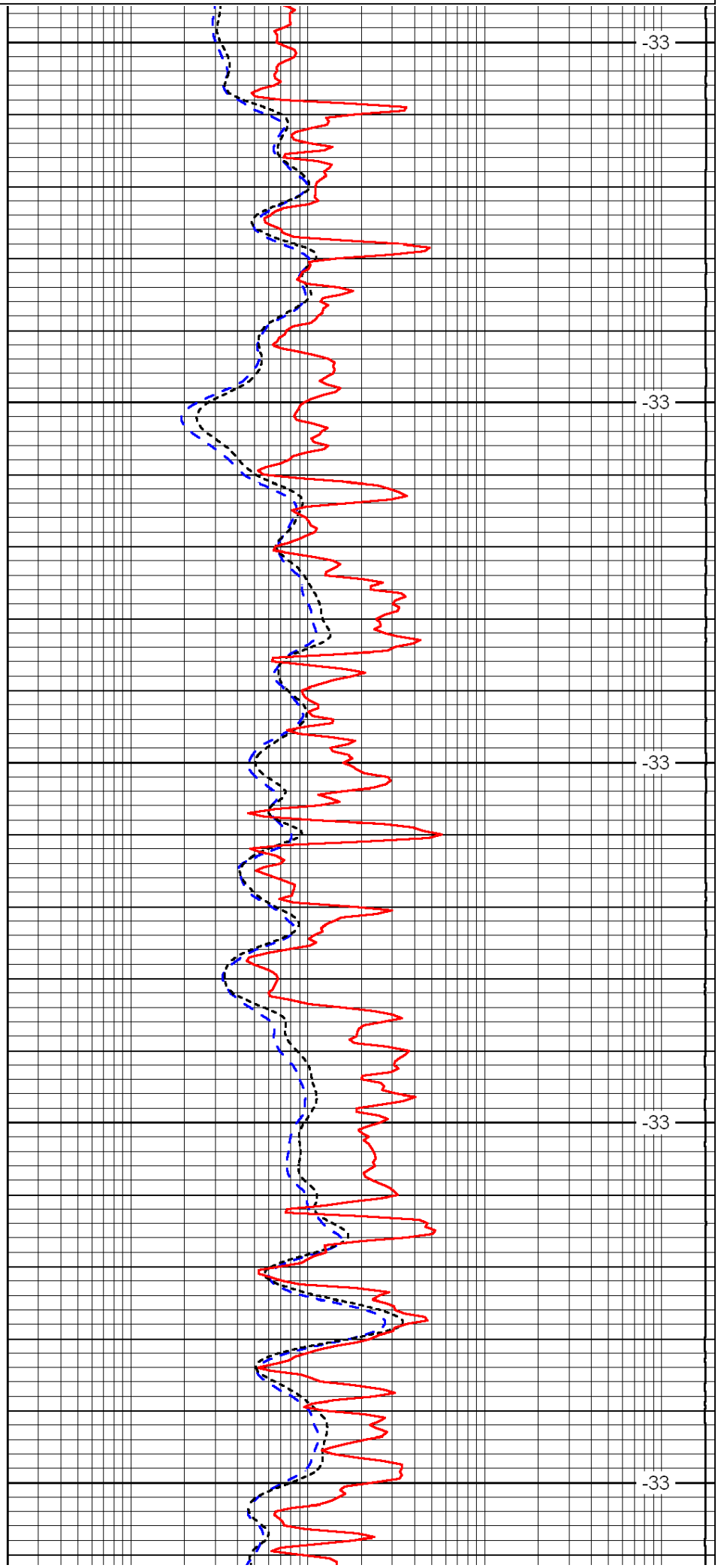
2500

2550

2600

2650

2700



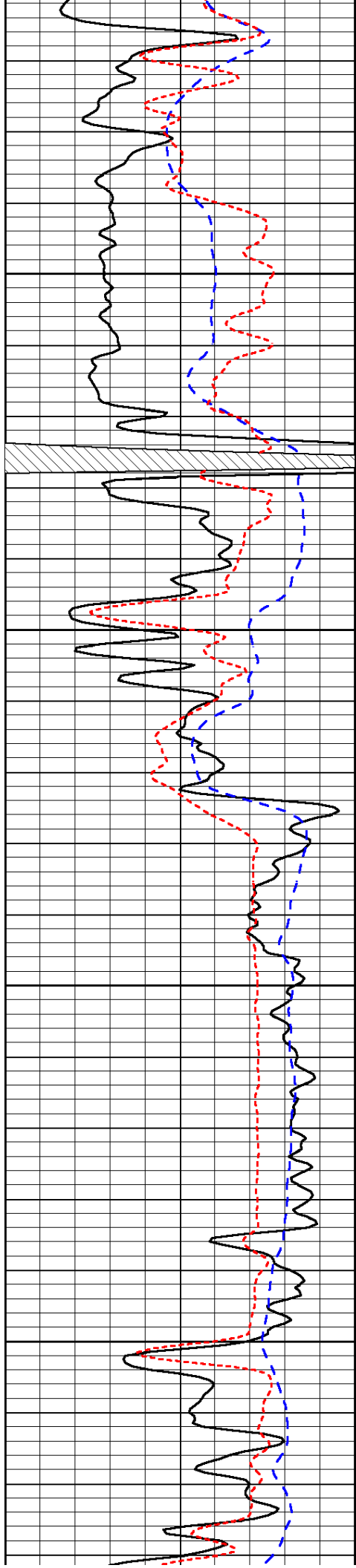
-33

-33

-33

-33

-33

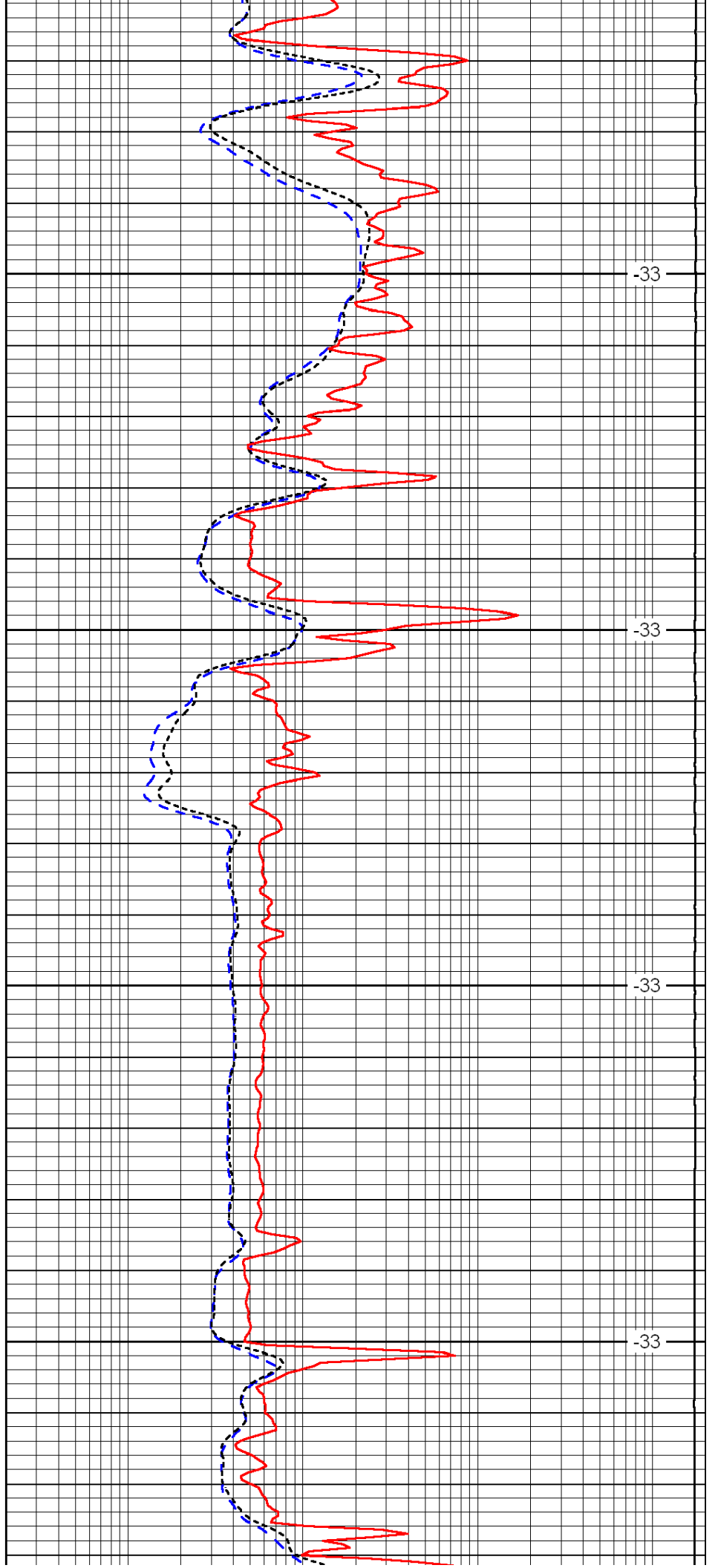


2750

2800

2850

2900

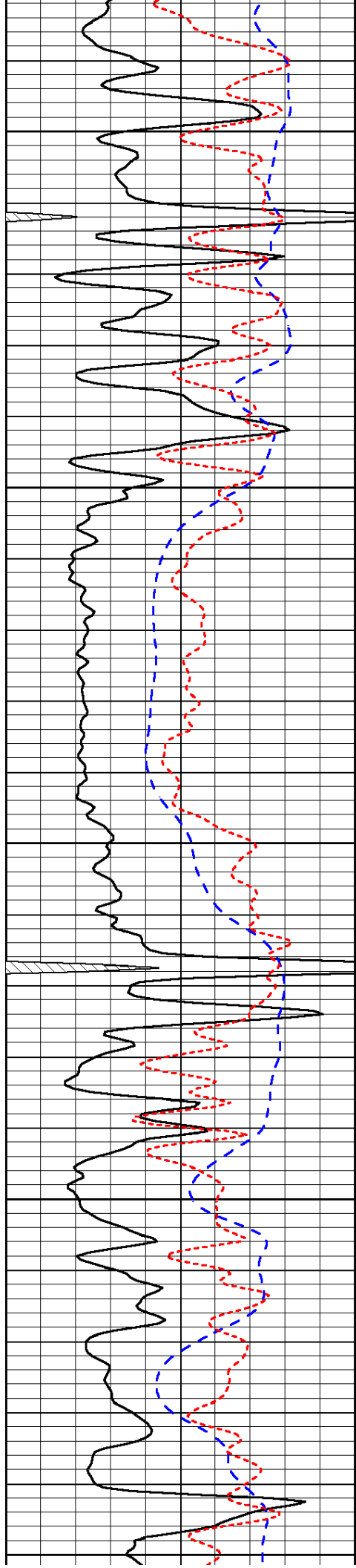


-33

-33

-33

-33



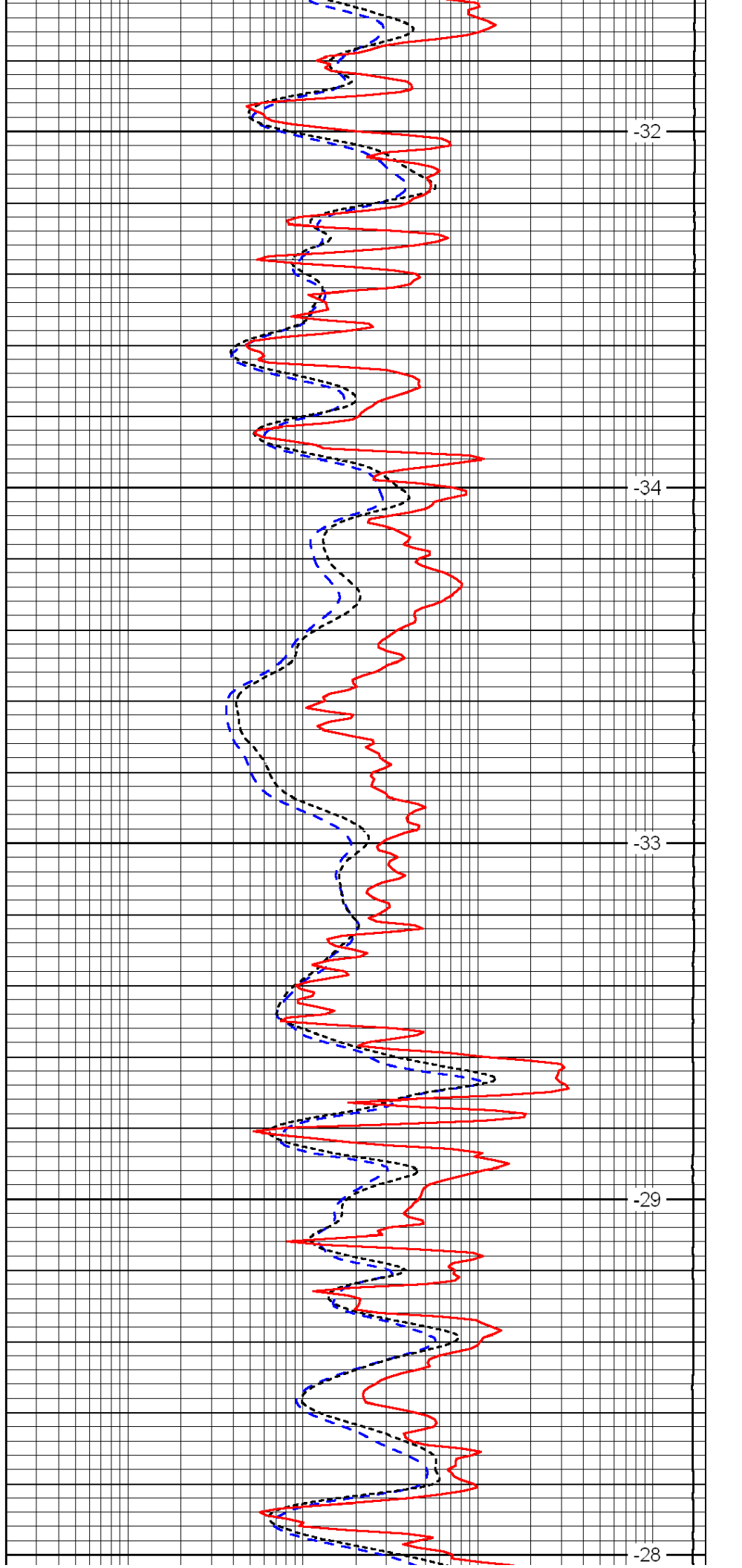
2950

3000

3050

3100

3150



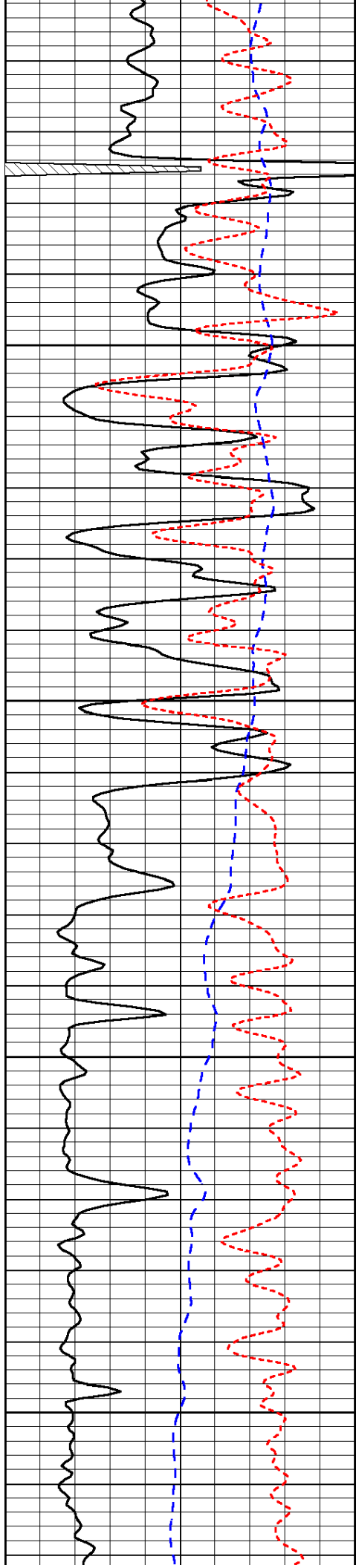
-32

-34

-33

-29

-28

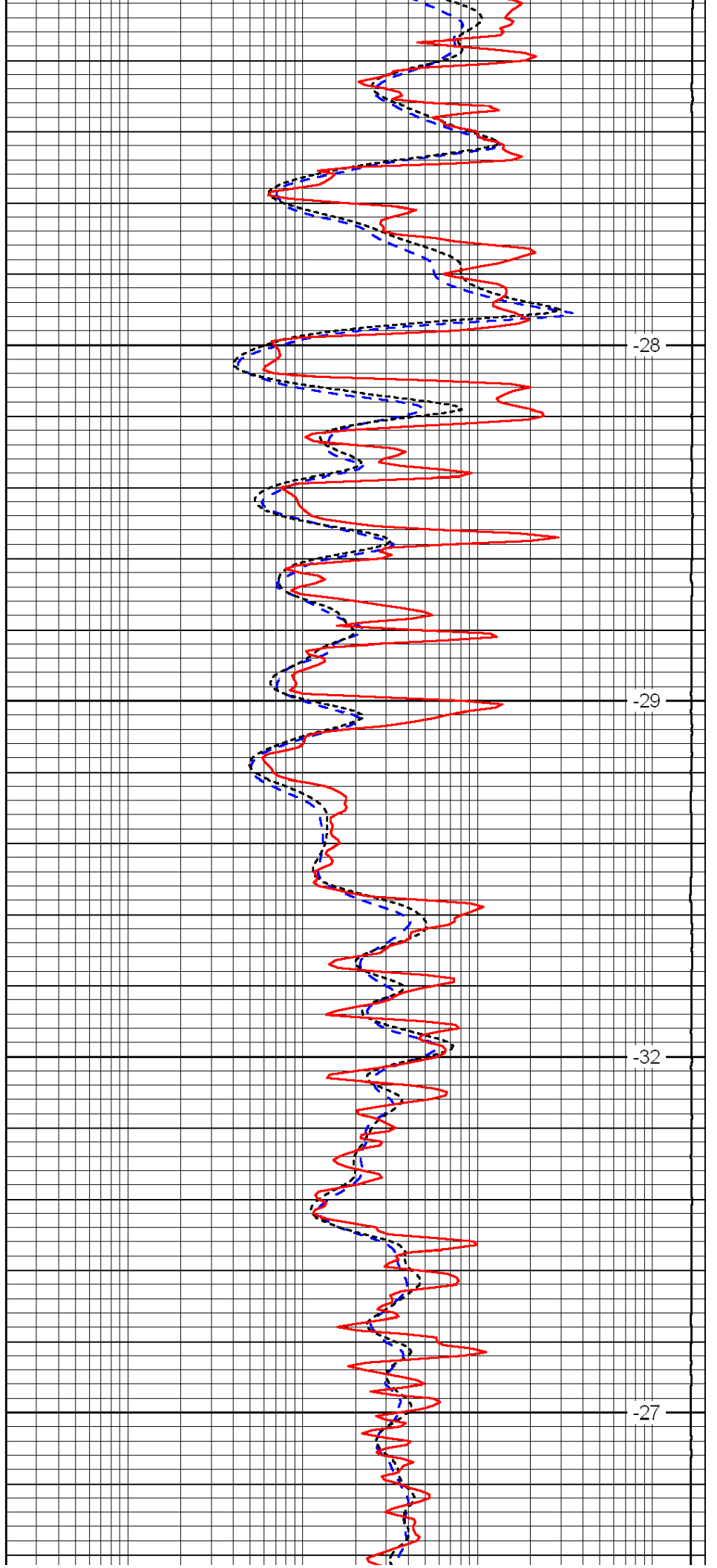


3200

3250

3300

3350

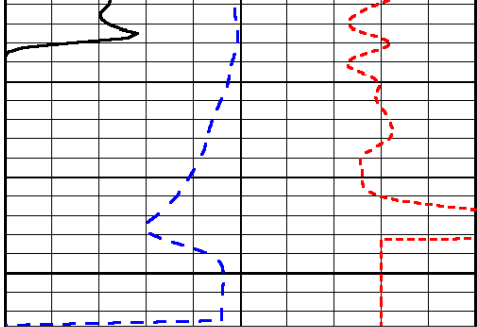


-28

-29

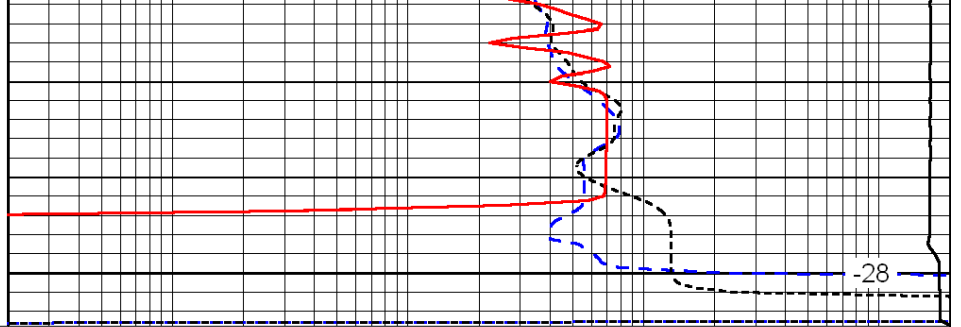
-32

-27



0	Gamma Ray	150
-200	SP (mV)	0
-160	Rxo / Rt	40

3400



0.2	Deep Resistivity	2000
0.2	Medium Resistivity	2000
0.2	Shallow Resistivity	2000
15000	Line Tension	0

LSPD