



Microresistivity Log

DIGITAL LOG (785) 625-3858

API No. 15-159-22,636-00-00	Company American Warrior, Inc.	Well Buckley No 4-18
	Field Chase - Silica	
	County Rice	State Kansas
	Location SE NE NE NW 600' FNL & 2,500' FWL	Other Services CNL/CDL DIL
	Sec: 18 Twp: 19 S Rge: 9 W	Elevation K.B. 1743 D.F. 1735 G.L. 1735
Permanent Datum Log Measured From Drilling Measured From	Ground Level Kelly Bushing From Kelly Bushing	Elevation 1735 8 Ft. Above Perm. Datum

Date	2/10/2011
Run Number	Two
Depth Driller	3400
Depth Logger	3398
Bottom Logged Interval	3397
Top Log Interval	2500
Casing Driller	8.625 @ 314
Casing Logger	308
Bit Size	7.875
Type Fluid in Hole	Chemical
Salinity, ppm CL	5400
Density / Viscosity	9.2 57
pH / Fluid Loss	11.5 8.0
Source of Sample	Flowline
Rm @ Meas. Temp	.83 @ 49
Rmf @ Meas. Temp	.62 @ 49
Rmc @ Meas. Temp	1.12 @ 49
Source of Rmf / Rmc	Charts
Rm @ BHT	.37 @ 110
Operating Rig Time	4 Hours
Max Rec. Temp. F	110
Equipment Number	10
Location	Hays
Recorded By	Jim Schuler
Witnessed By	Jim Musgrove

<<< Fold Here >>>

All interpretations are opinions based on inferences from electrical or other measurements and we cannot and do not guarantee the accuracy or correctness of any interpretation, and we shall not, except in the case of gross or willful negligence on our part, be liable or responsible for any loss, costs, damages, or expenses incurred or sustained by anyone resulting from any interpretation made by any of our officers, agents or employees. These interpretations are also subject to our general terms and conditions set out in our current Price Schedule.

Comments

Thank you for using Log-Tech, Inc.
(785) 625-3858

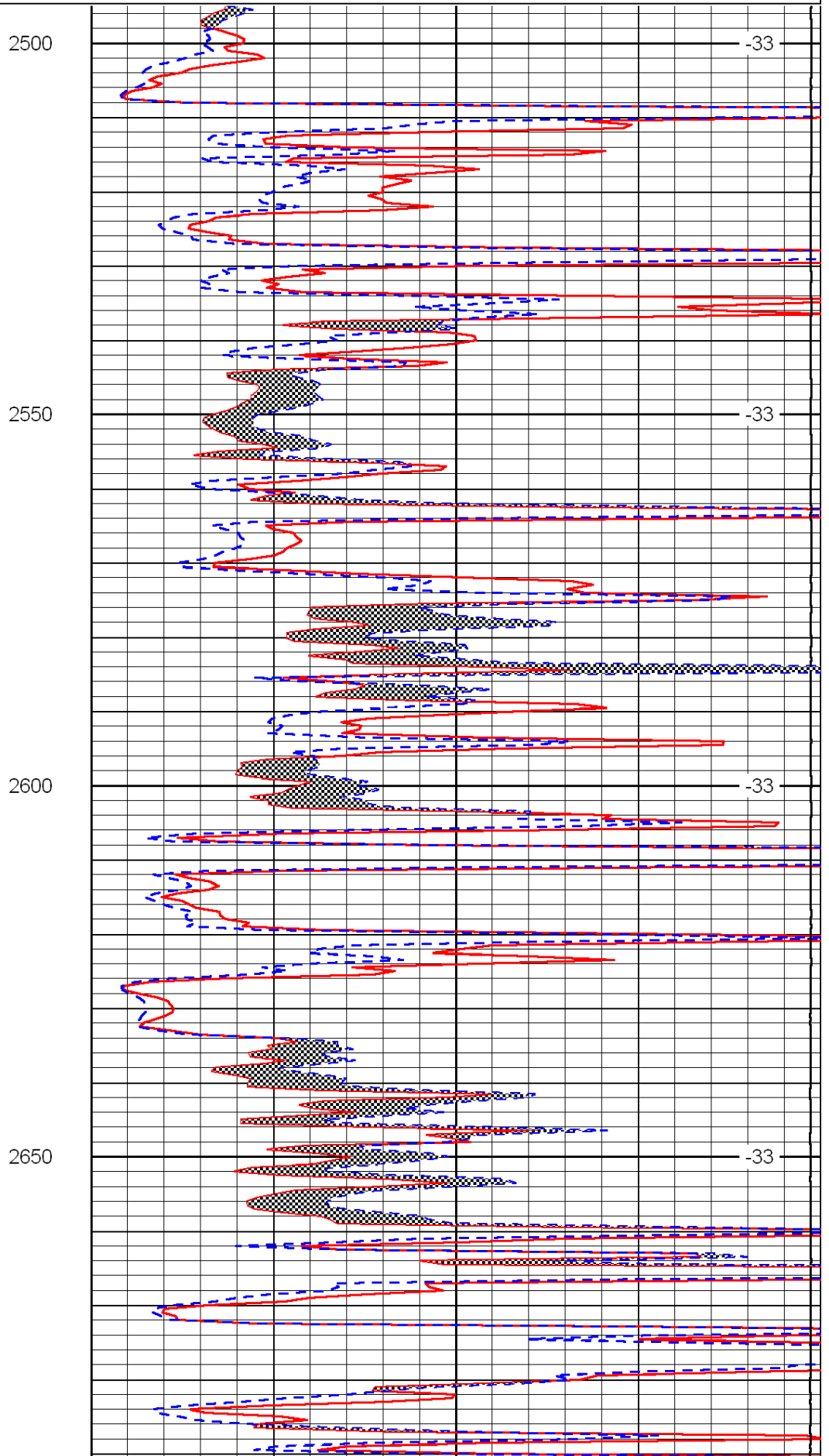
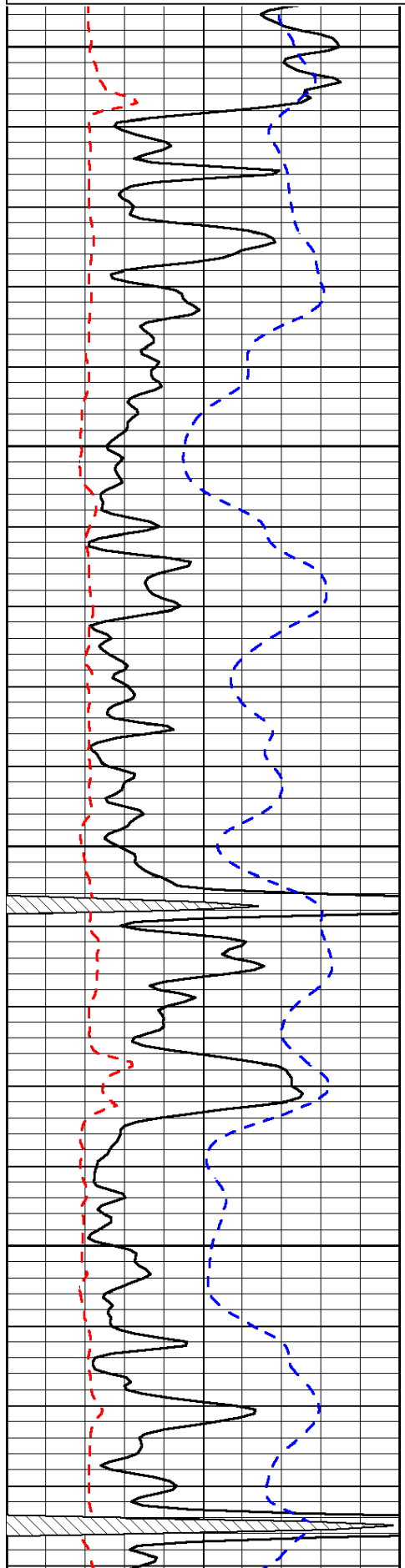
Chase, Kansas
4 Miles North, 1/2 West, South Into

Database File: c:\warrior\data\amwar_buckley no 4-18\amwar.db
 Dataset Pathname: dil/amstk
 Presentation Format: micro
 Dataset Creation: Thu Feb 10 21:09:53 2011
 Charted by: Depth in Feet scaled 1:240

0	Gamma Ray	150
6	Micro Log Caliper (GAPI)	16
-200	SP (mV)	0

0	Micro Inverse 1 X 1	40
0	Micro Normal 2"	40
15000	Line Weight	0

LSPD



2500

2550

2600

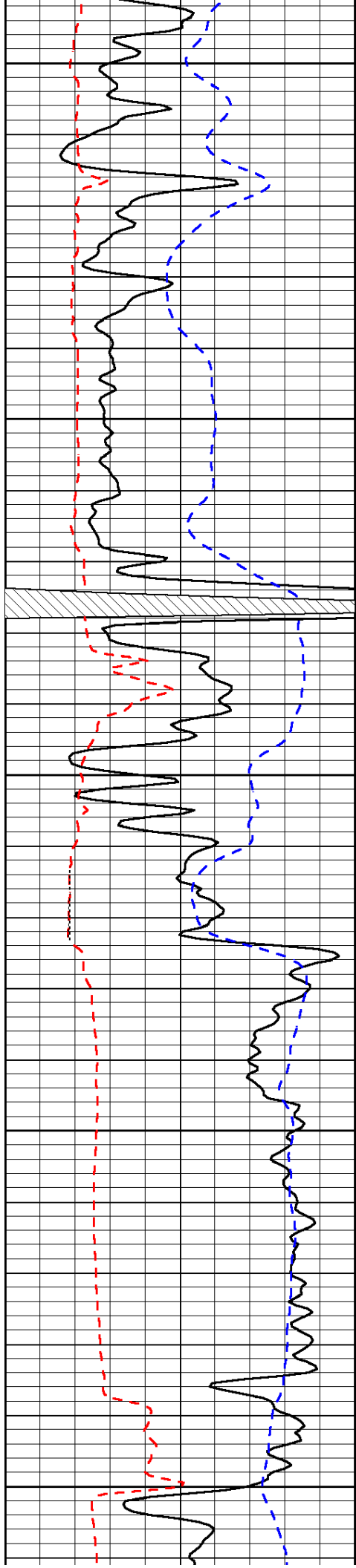
2650

-33

-33

-33

-33



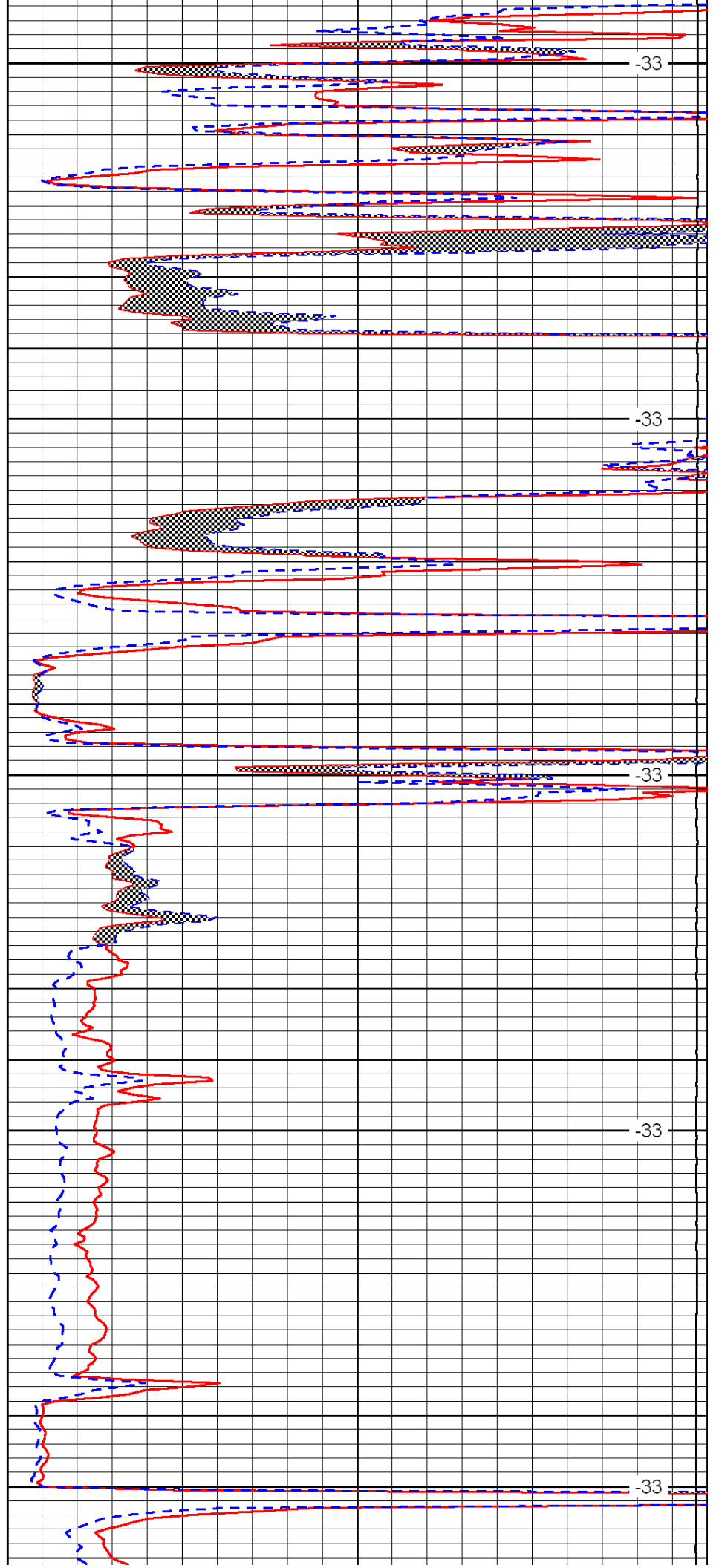
2700

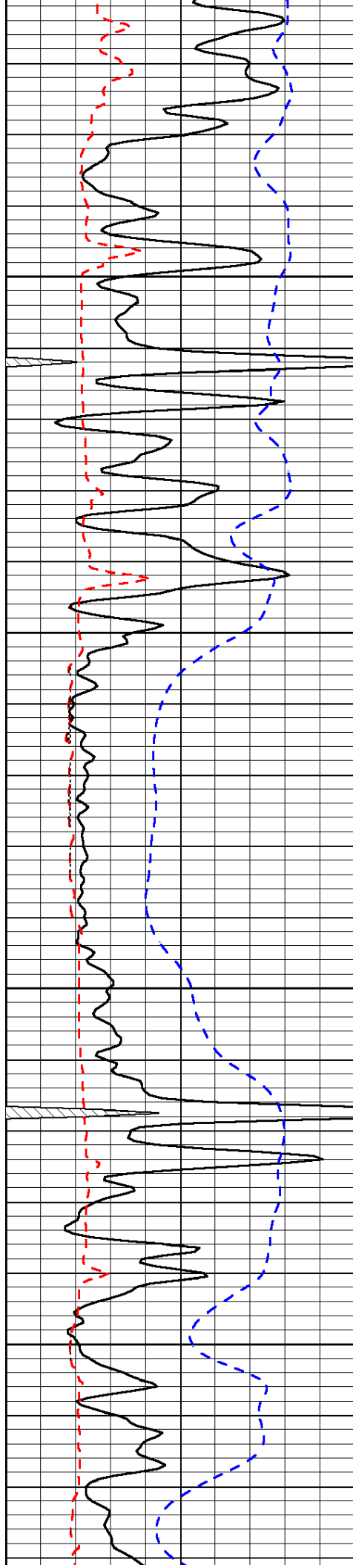
2750

2800

2850

2900



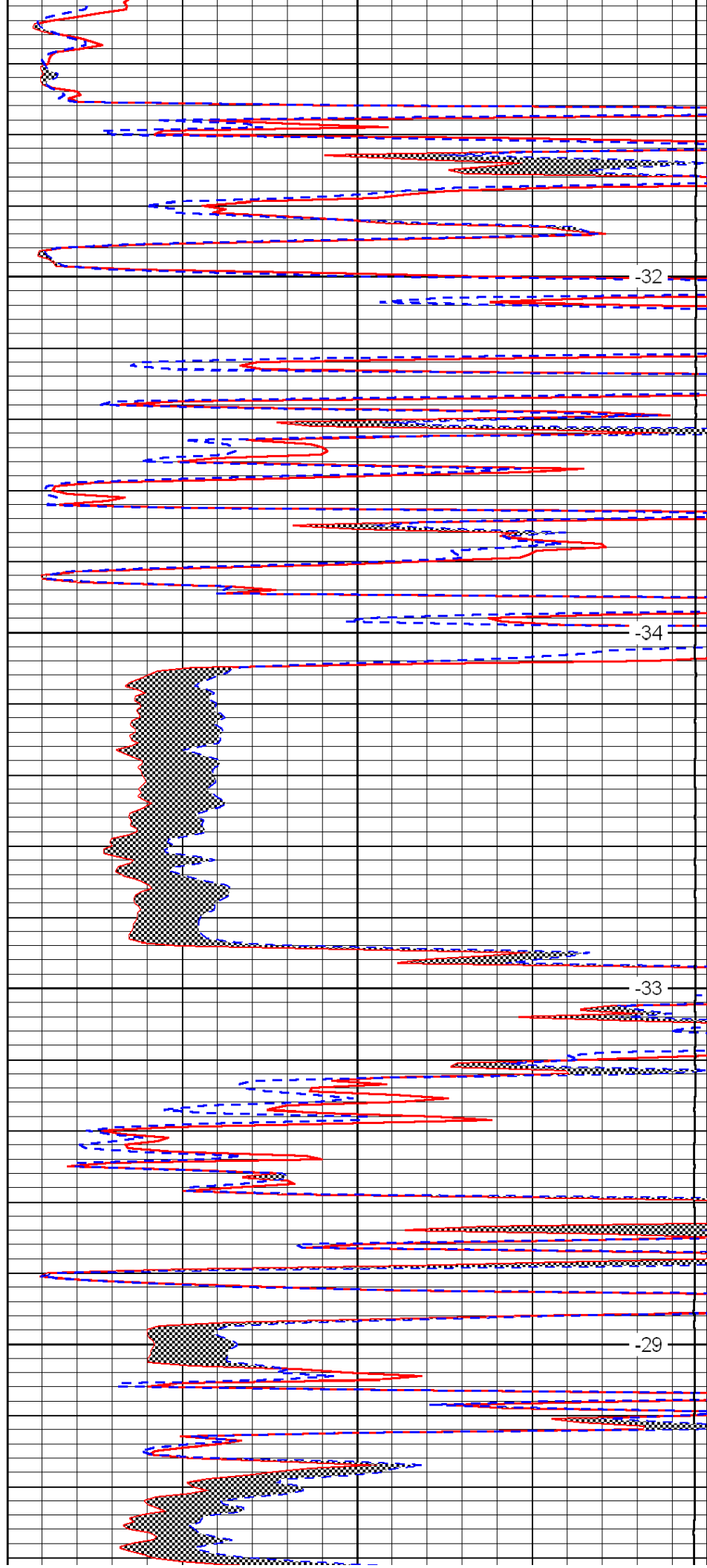


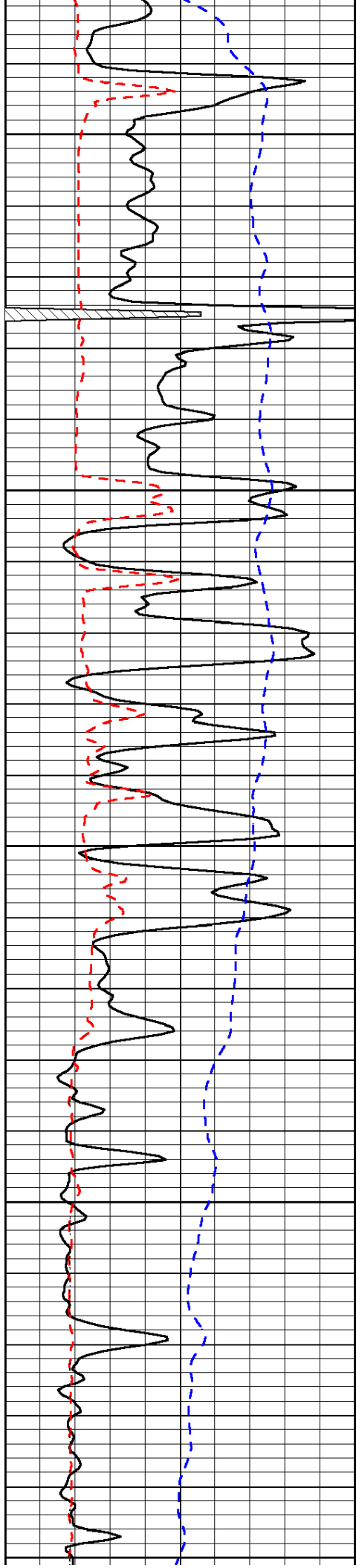
2950

3000

3050

3100





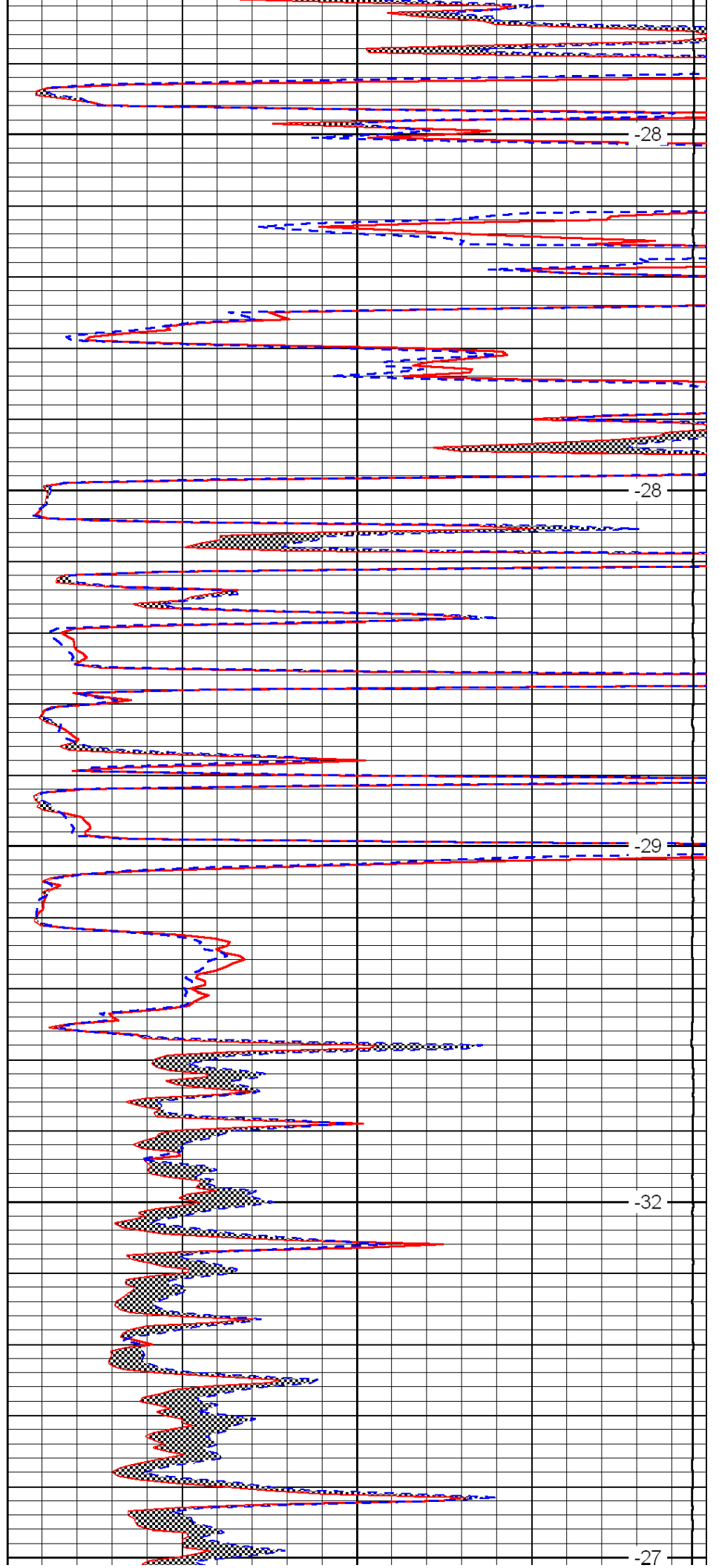
3150

3200

3250

3300

3350



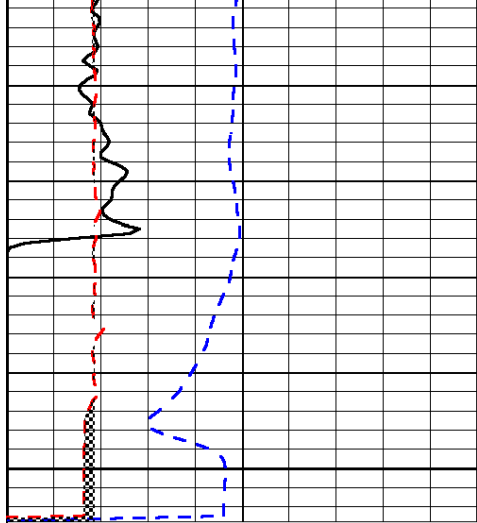
-28

-28

-29

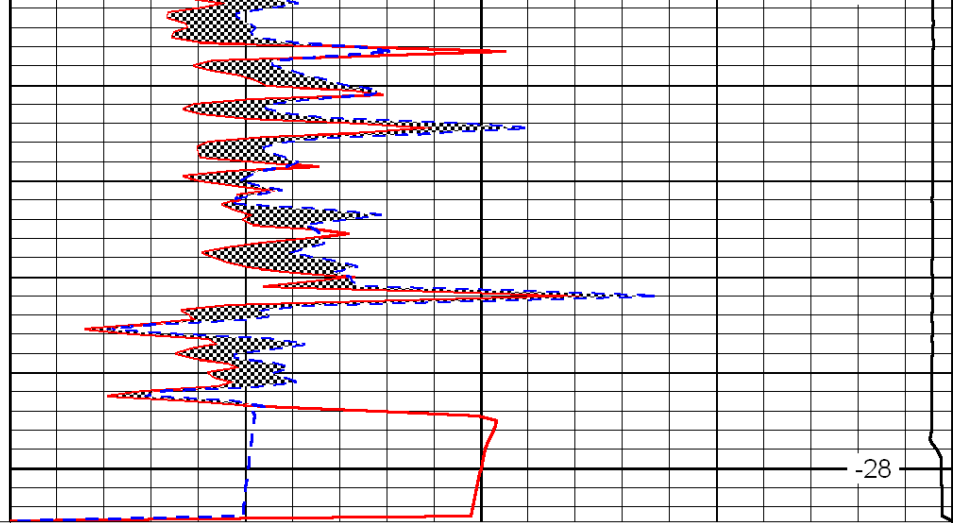
-32

-27



0	Gamma Ray	150
6	Micro Log Caliper (GAPI)	16
-200	SP (mV)	0

3400



0	Micro Inverse 1 X 1	40
0	Micro Normal 2''	40
15000	Line Weight	0

-28

LSPD