



Microresistivity Log

DIGITAL LOG (785) 625-3858

15-147-20,678-00-00

API No.

Company **Bach Oil Production**
 Well **GPW Unit No.1**
 Field **Wildcat**
 County **Phillips** State **Kansas**

Location **SW SW NE SW
1427' FNL & 1415' FEL**

Sec: **27** Twp: **1S** Rge: **19W**

Permanent Datum **Ground Level** Elevation **2141**
 Log Measured From **Kelly Bushing** 5 Ft. Above Perm. Datum
 Drilling Measured From **Kelly Bushing**

Other Services
CNL/CDL
DIL

Elevation

K.B. 2146
D.F. 2141
G.L. 2141

Date	5/22/2012
Run Number	Two
Depth Driller	3640
Depth Logger	3641
Bottom Logged Interval	3640
Top Log Interval	3050
Casing Driller	8.625 @ 232
Casing Logger	233
Bit Size	7.875
Type Fluid in Hole	Chemical
Salinity,ppm CL	800
Density / Viscosity	9.1 62
pH / Fluid Loss	10.5 8.8
Source of Sample	Flowline
Rm @ Meas. Temp	1.3 @ 79
Rmf @ Meas. Temp	.98 @ 79
Rmc @ Meas. Temp	1.76 @ 79
Source of Rmf / Rmc	Charts
Rm @ BHT	.91 @ 112
Operating Rig Time	3 1/2 Hours
Max Rec. Temp. F	112
Equipment Number	17
Location	Hays
Recorded By	C. Desaire
Witnessed By	Bob Petersen

<<< Fold Here >>>

All interpretations are opinions based on inferences from electrical or other measurements and we cannot and do not guarantee the accuracy or correctness of any interpretation, and we shall not, except in the case of gross or willful negligence on our part, be liable or responsible for any loss, costs, damages, or expenses incurred or sustained by anyone resulting from any interpretation made by any of our officers, agents or employees. These interpretations are also subject to our general terms and conditions set out in our current Price Schedule.

Comments

Thank you for using Log-Tech, Inc.
 (785) 625-3858

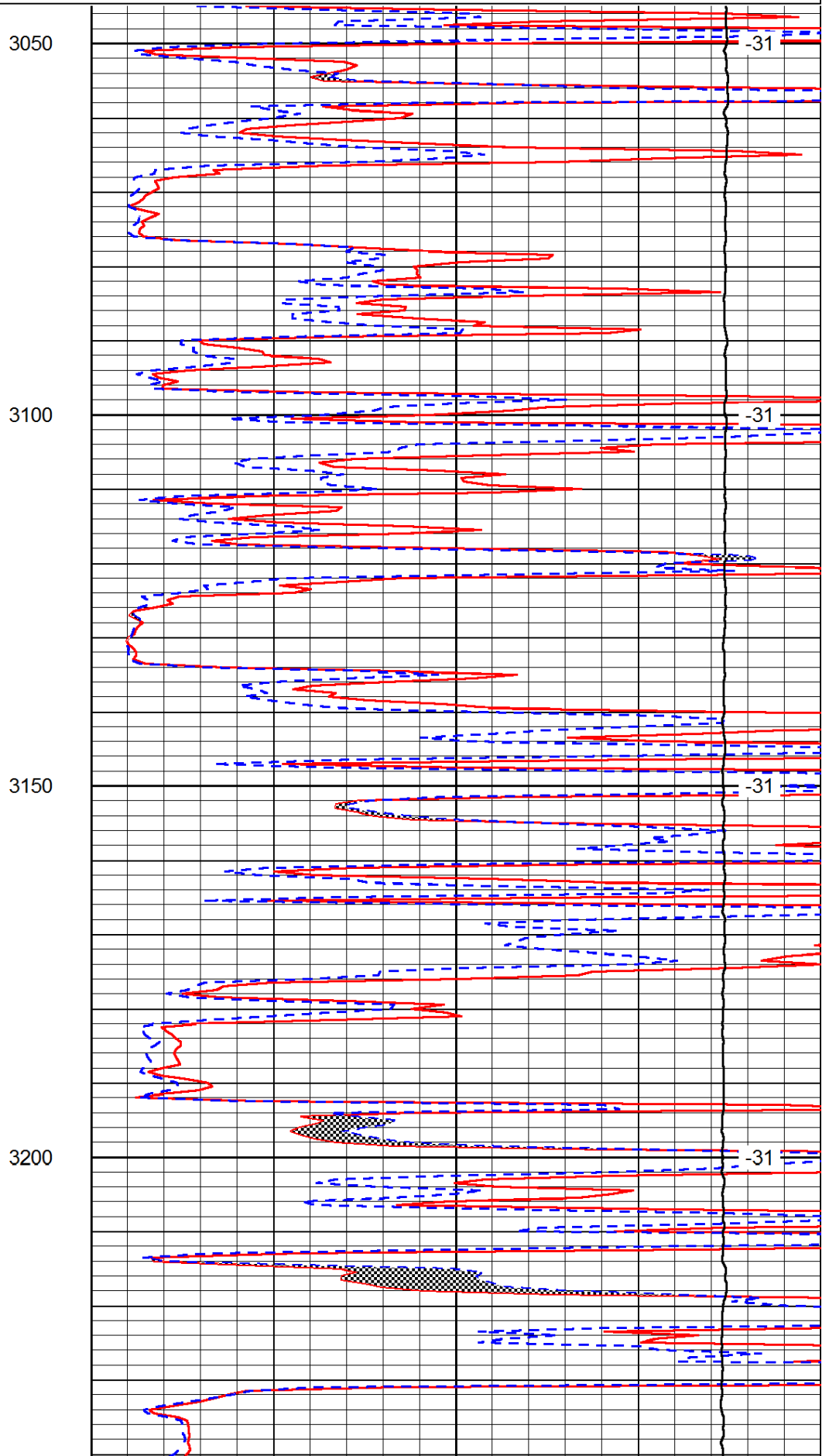
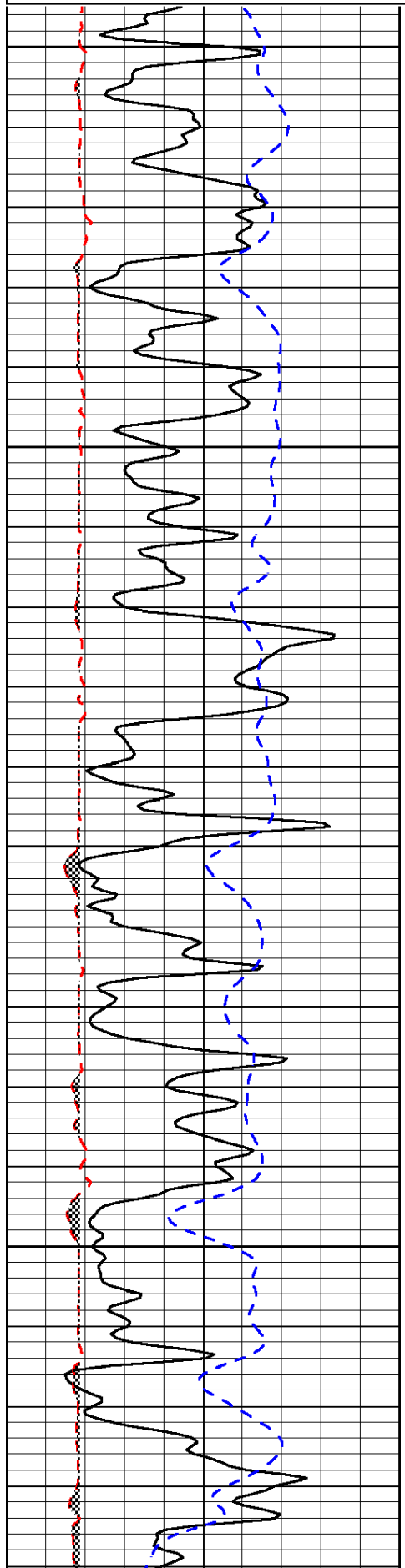
Phillipsburg KS, N to Hunter Rd,
 7 W to 700 Rd, 2 1/2 N, E Into

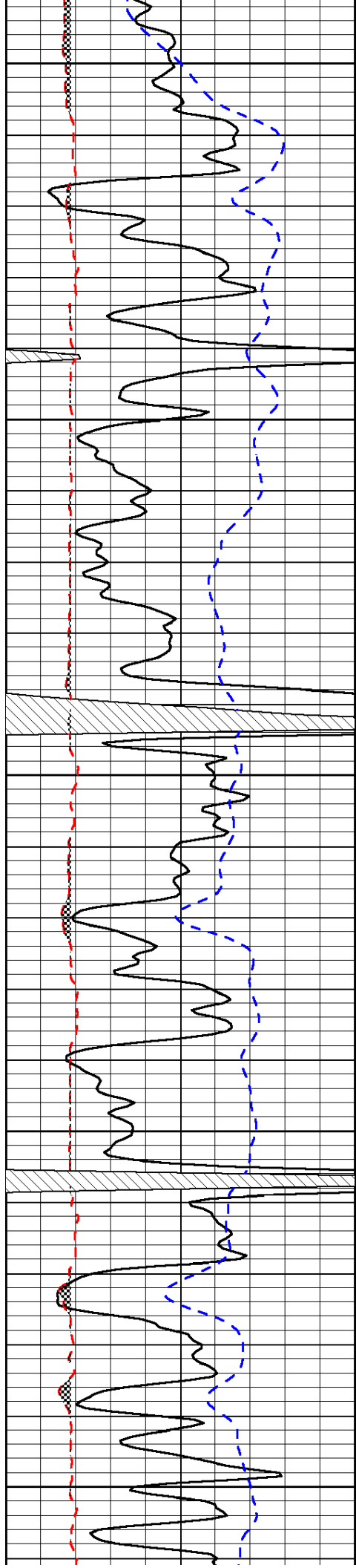
Database File: c:\warrior\data\bach_gpww unit no.1\bachhd.db
 Dataset Pathname: dil/bachstk
 Presentation Format: micro
 Dataset Creation: Tue May 22 18:02:16 2012
 Charted by: Depth in Feet scaled 1:240

0	Gamma Ray	150
6	Micro Log Caliper (GAPI)	16
-200	SP (mV)	0

0	Micro Inverse 1 X 1	40
0	Micro Normal 2"	40
15000	Line Weight	0

LSPD





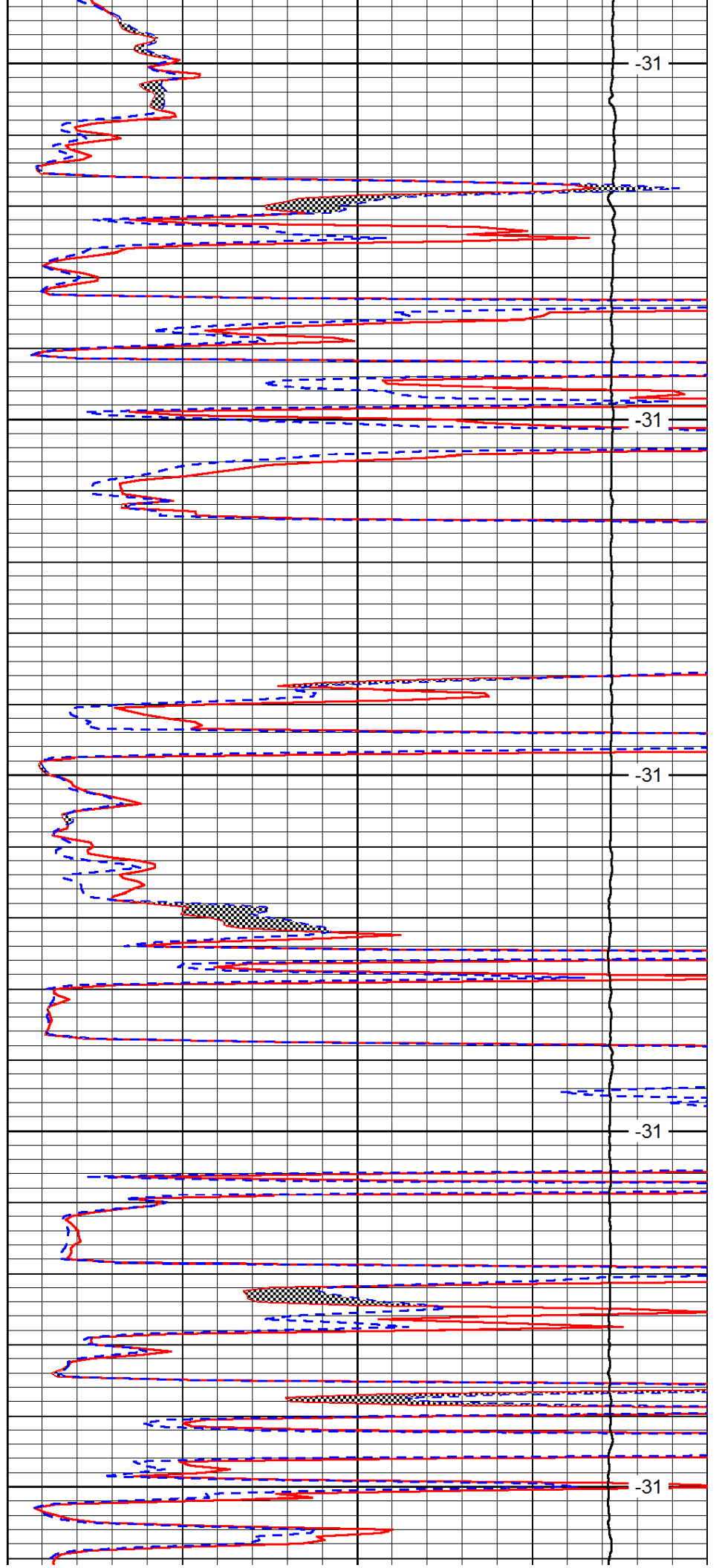
3250

3300

3350

3400

3450



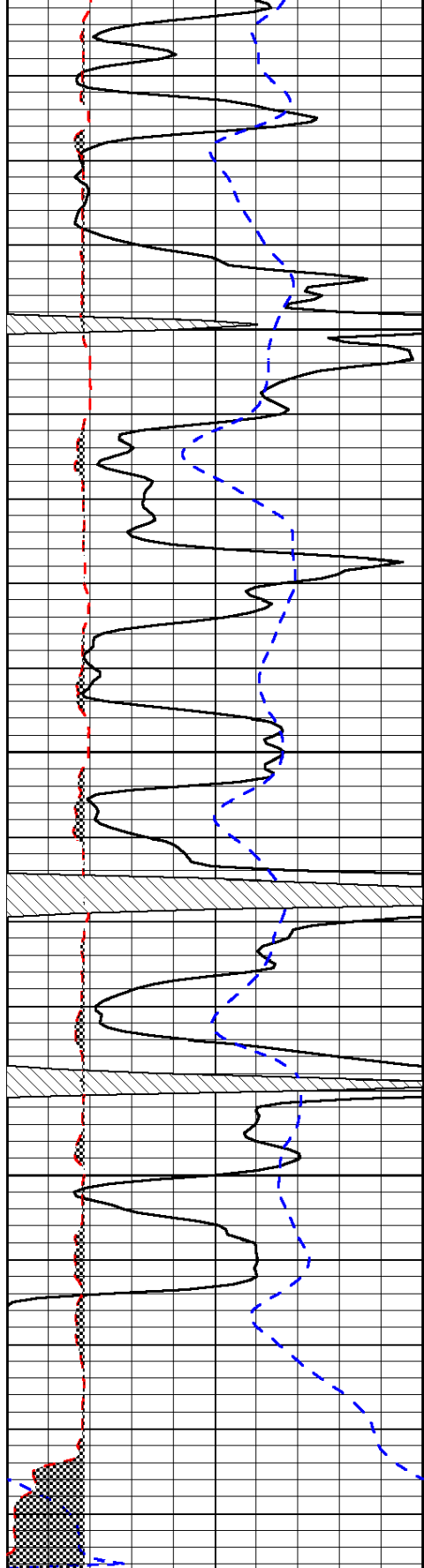
-31

-31

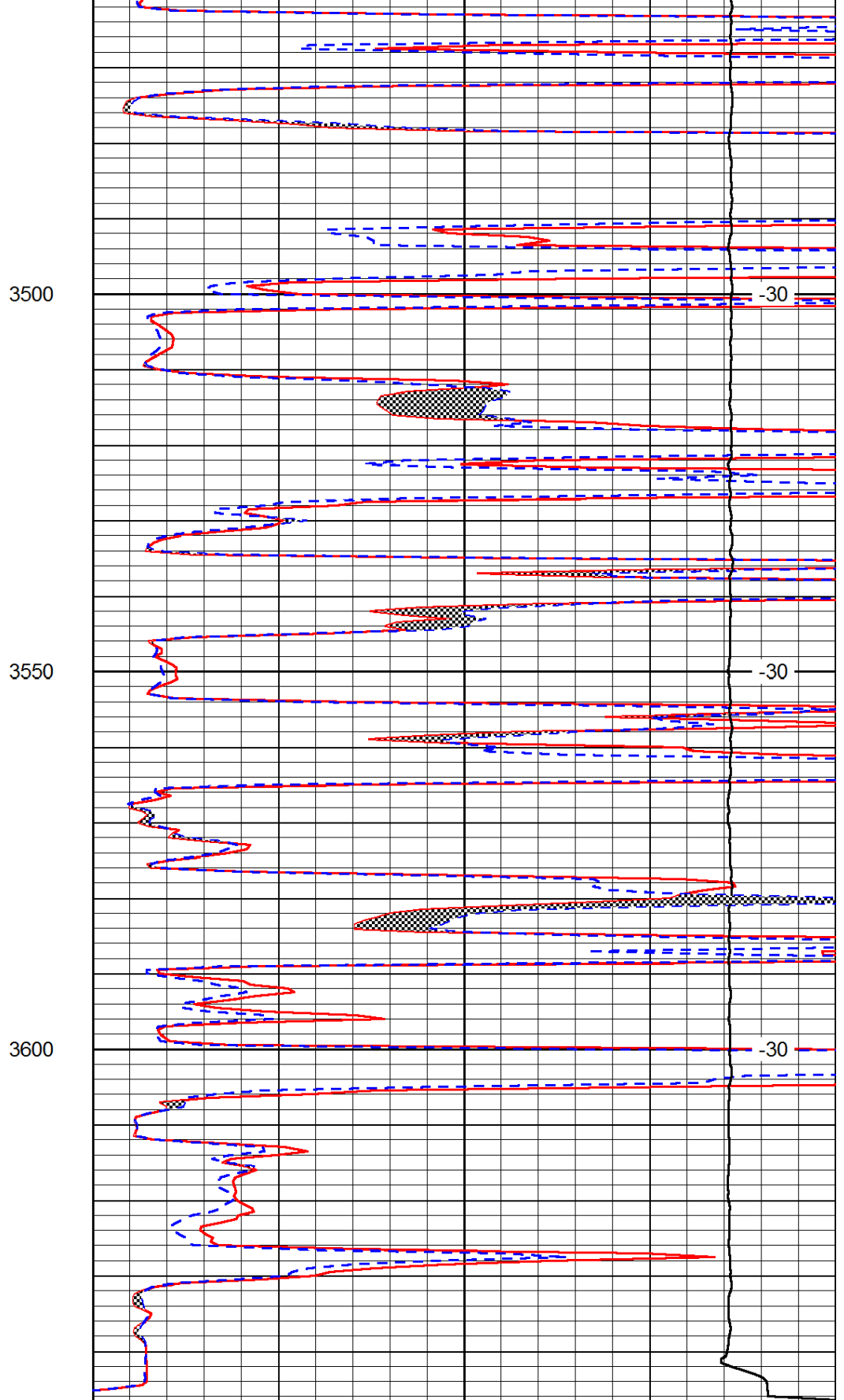
-31

-31

-31



0	Gamma Ray	150
6	Micro Log Caliper (GAPI)	16
-200	SP (mV)	0



0	Micro Inverse 1 X 1	40
0	Micro Normal 2"	40
15000	Line Weight	0

LSPD