



DIGITAL LOG (785) 625-3858

Dual Induction Log

15-147-20,678-00-00

API No.

Company **Bach Oil Production**

Well **GPW Unit No.1**

Field **Wildcat**

County **Phillips** State **Kansas**

Location

**SW SW NE SW  
1427' FNL & 1415' FEL**

Other Services  
CNL/CDL  
MEL

Sec: **27** Twp: **1S** Rge: **19W**

Permanent Datum **Ground Level** Elevation **2141**

Log Measured From **Kelly Bushing** 5 Ft. Above Perm. Datum

Drilling Measured From **Kelly Bushing**

Elevation  
K.B. 2146  
D.F. 2141  
G.L. 2141

Date **5/22/2012**

Run Number **One**

Depth Driller **3640**

Depth Logger **3641**

Bottom Logged Interval **3640**

Top Log Interval **200**

Casing Driller **8.625 @ 232**

Casing Logger **233**

Bit Size **7.875**

Type Fluid in Hole **Chemical**

Salinity,ppm CL **800**

Density / Viscosity **9.1 62**

pH / Fluid Loss **10.5 8.8**

Source of Sample **Flowline**

Rm @ Meas. Temp **1.3 @ 79**

Rmf @ Meas. Temp **.98 @ 79**

Rmc @ Meas. Temp **1.76 @ 79**

Source of Rmf / Rmc **Charts**

Rm @ BHT **.91 @ 112**

Operating Rig Time **3 1/2 Hours**

Max Rec. Temp. F **112**

Equipment Number **17**

Location **Hays**

Recorded By **C. Desai**

Witnessed By **Bob Petersen**

<<< Fold Here >>>

All interpretations are opinions based on inferences from electrical or other measurements and we cannot and do not guarantee the accuracy or correctness of any interpretation, and we shall not, except in the case of gross or willful negligence on our part, be liable or responsible for any loss, costs, damages, or expenses incurred or sustained by anyone resulting from any interpretation made by any of our officers, agents or employees. These interpretations are also subject to our general terms and conditions set out in our current Price Schedule.

Comments

Thank you for using Log-Tech, Inc.  
(785) 625-3858

Phillipsburg KS, N to Hunter Rd,  
7 W to 700 Rd, 2 1/2 N, E Into

Database File: c:\warrior\data\bach\_gpww unit no.1\bachhd.db  
Dataset Pathname: dil/bachstk  
Presentation Format: dil2in  
Dataset Creation: Tue May 22 18:02:16 2012  
Charted by: Depth in Feet scaled 1:600

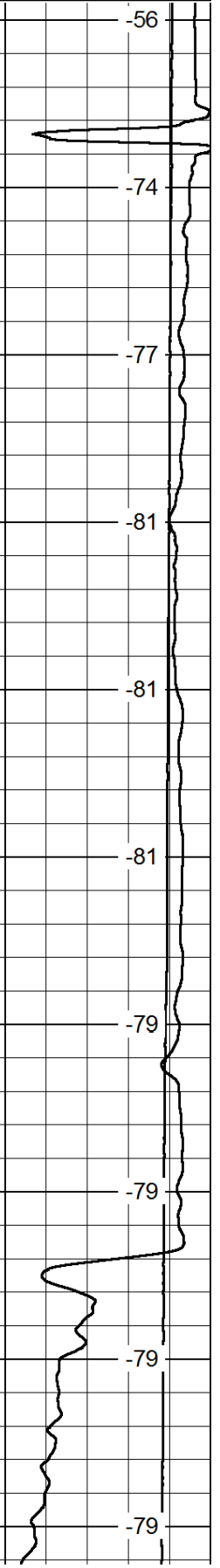
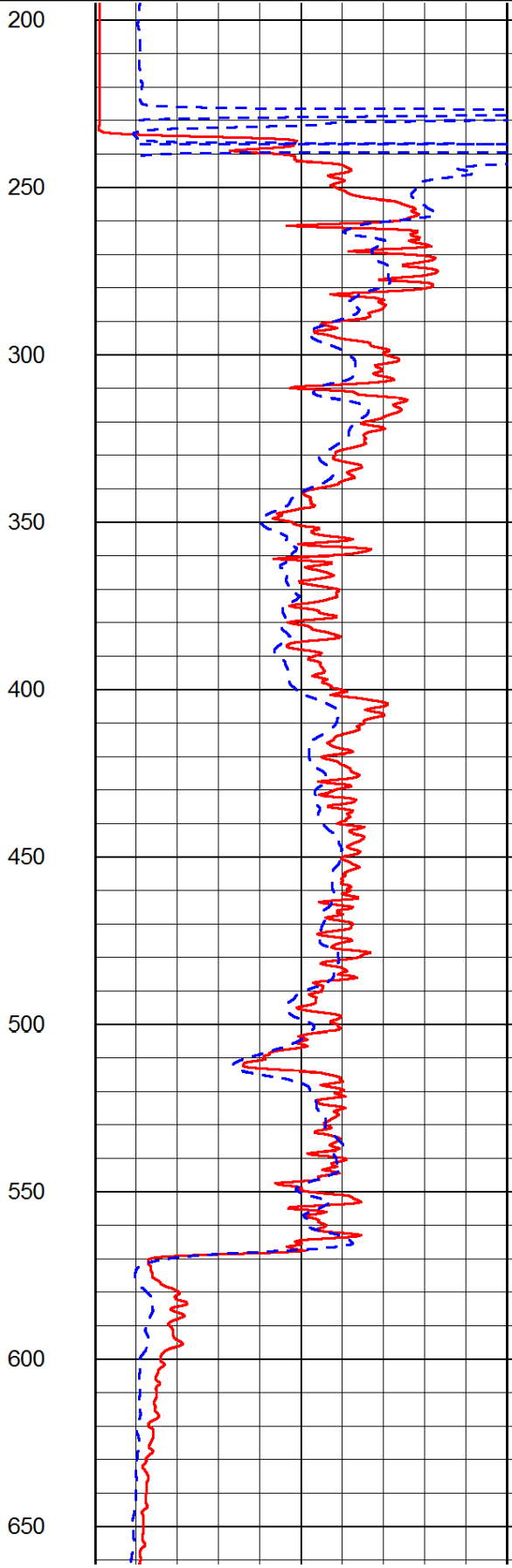
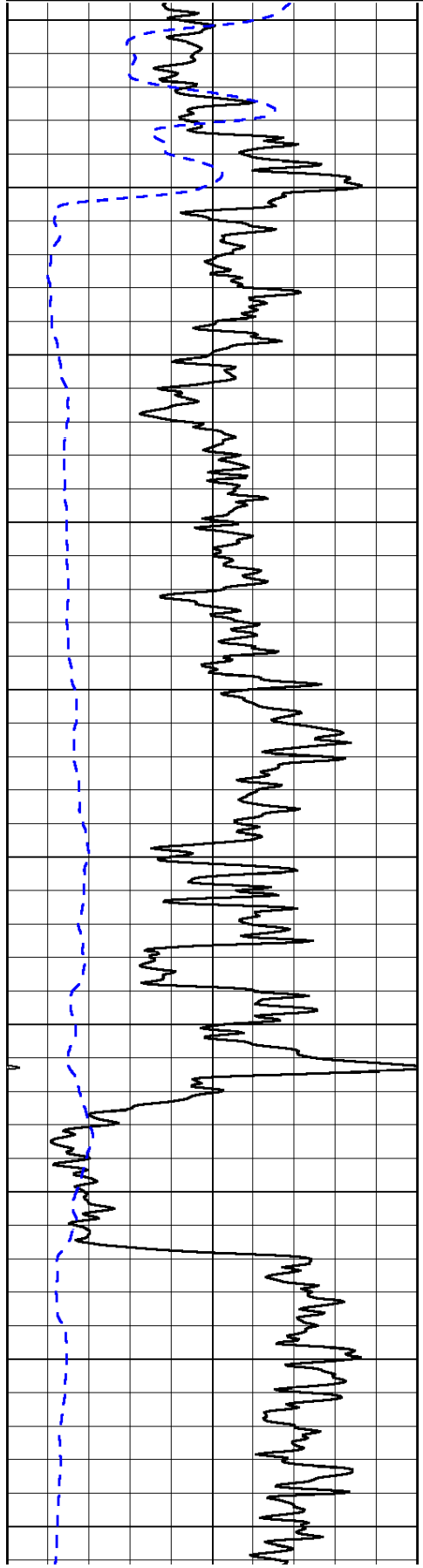
|      |           |     |
|------|-----------|-----|
| 0    | Gamma Ray | 150 |
| -200 | SP (mV)   | 0   |

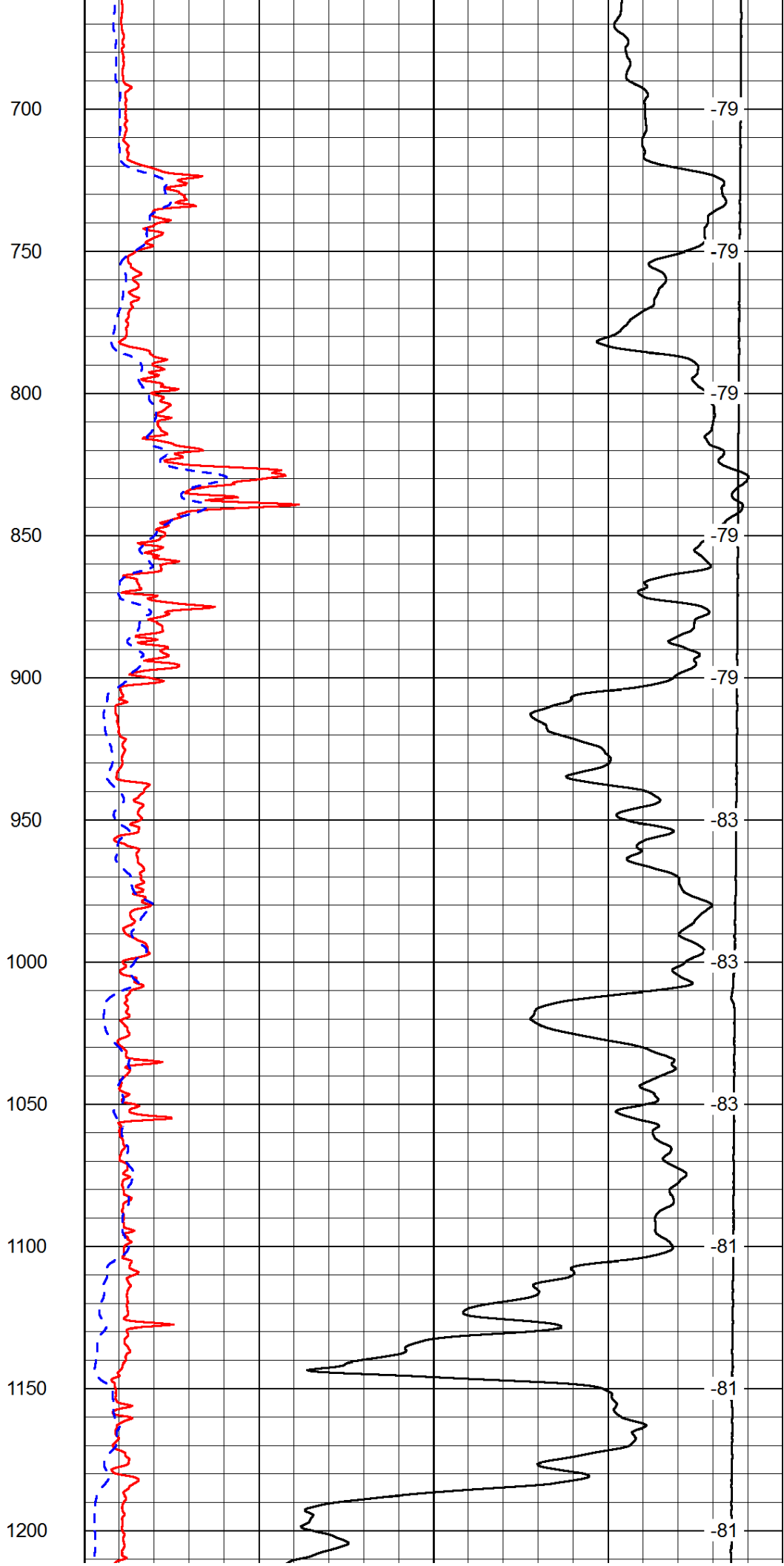
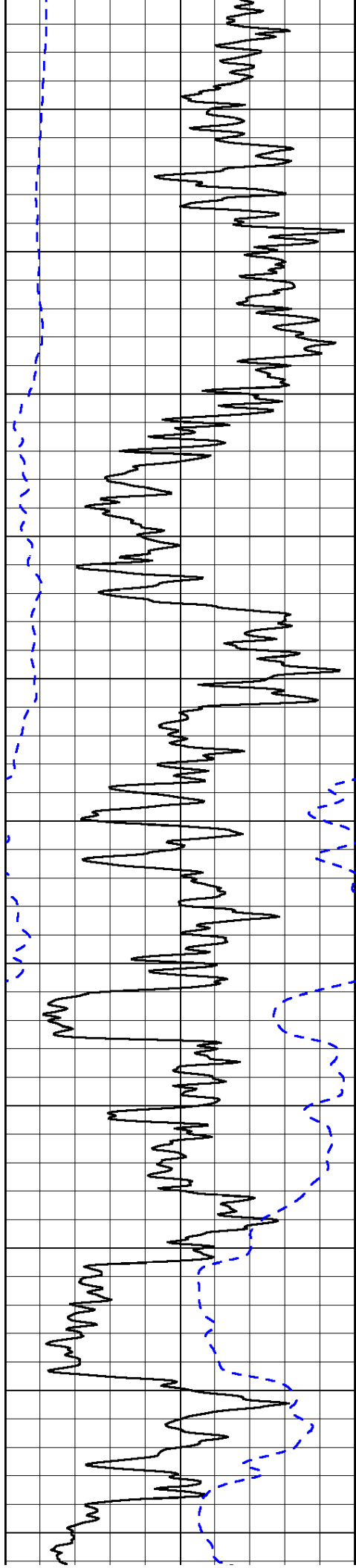
|   |                     |    |
|---|---------------------|----|
| 0 | Shallow Resistivity | 50 |
| 0 | Deep Resistivity    | 50 |

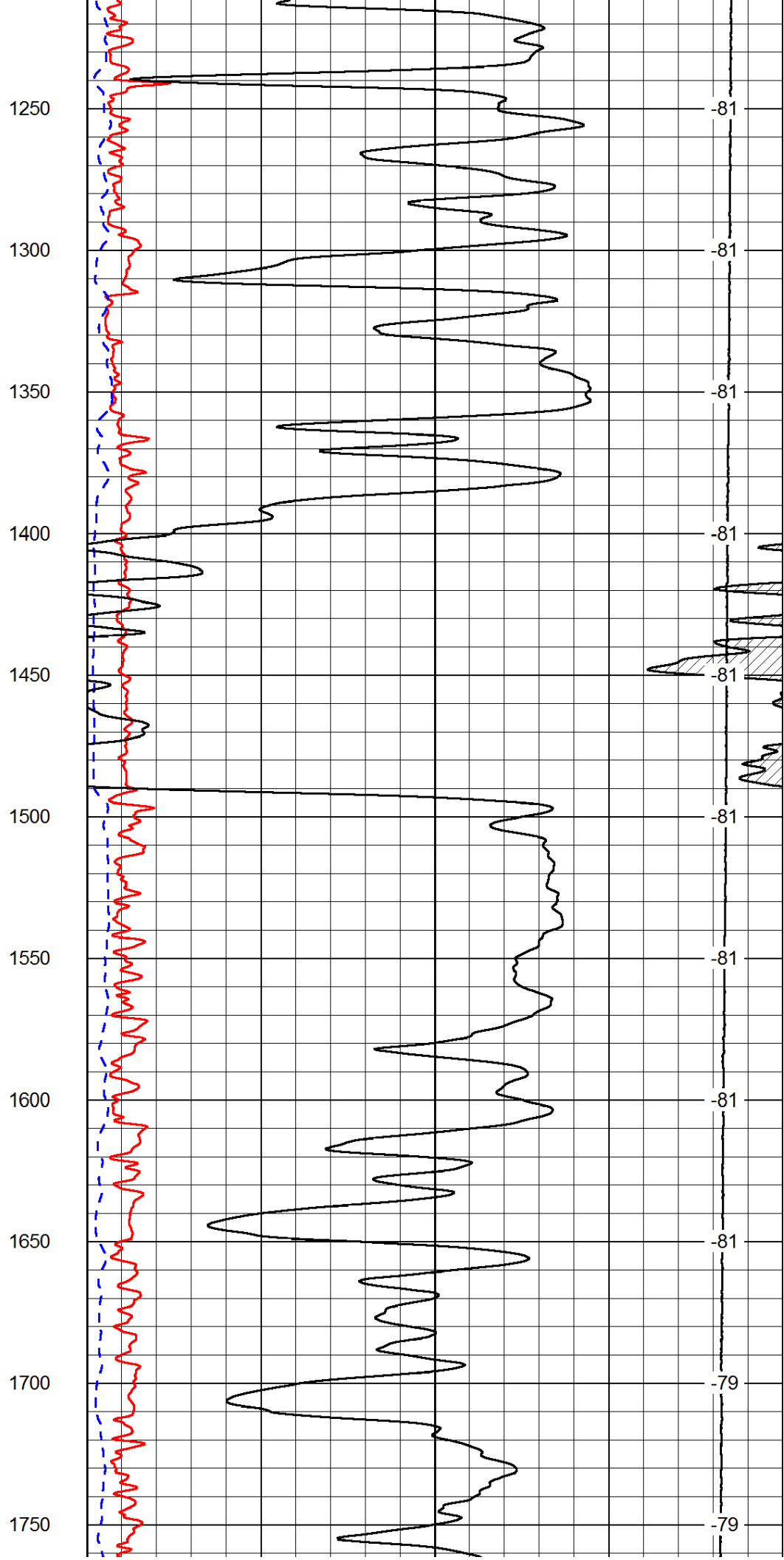
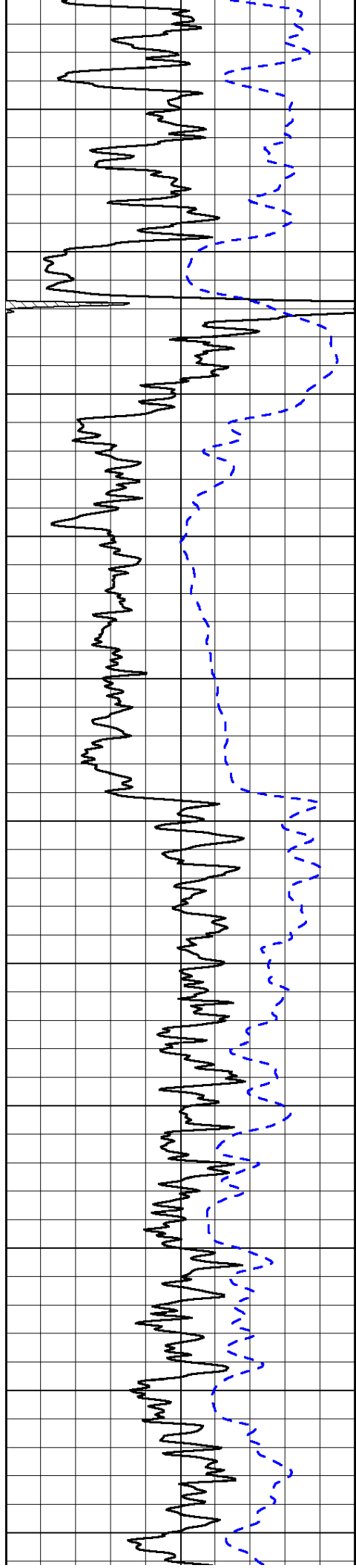
LSPD

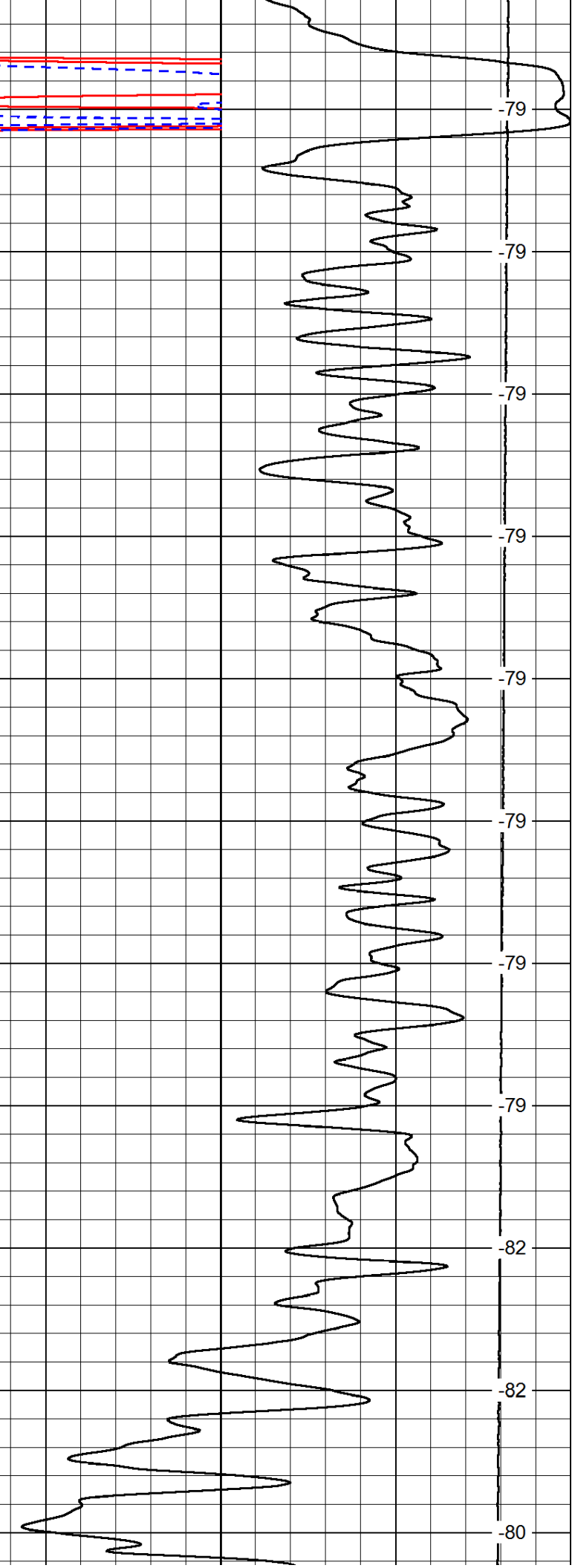
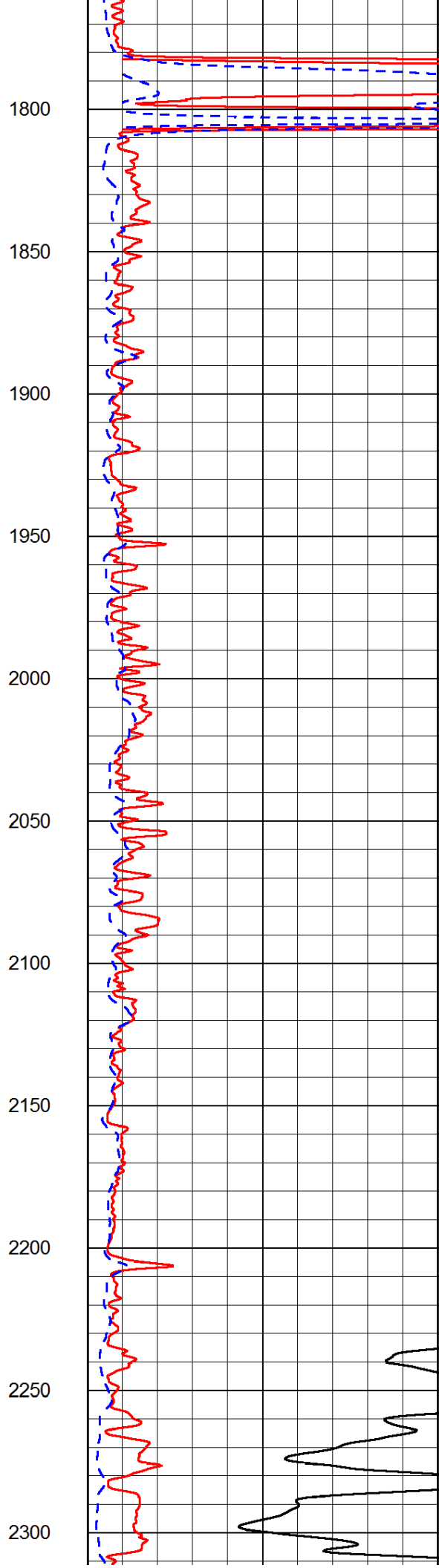
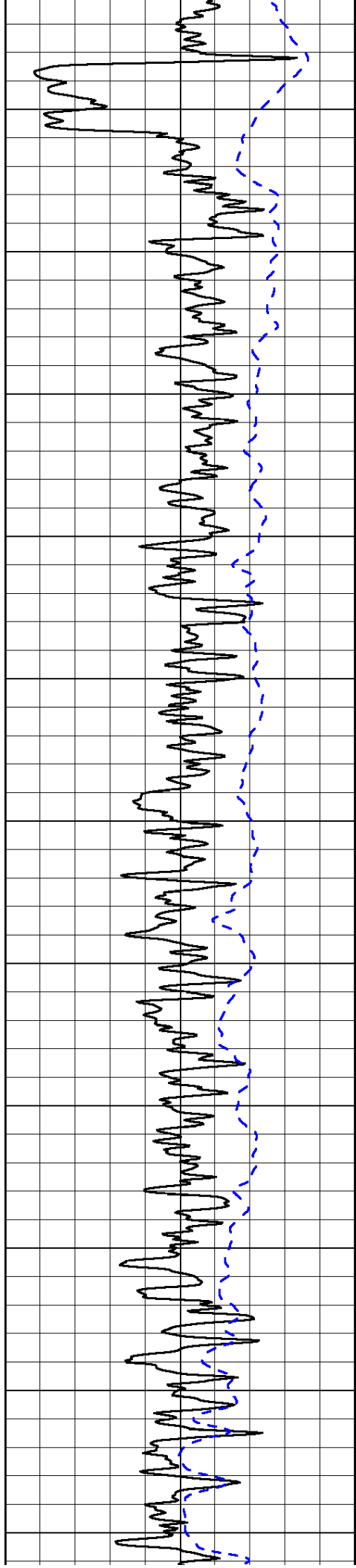
|       |              |   |
|-------|--------------|---|
| 1000  | Conductivity | 0 |
| 15000 | Line Tension | 0 |

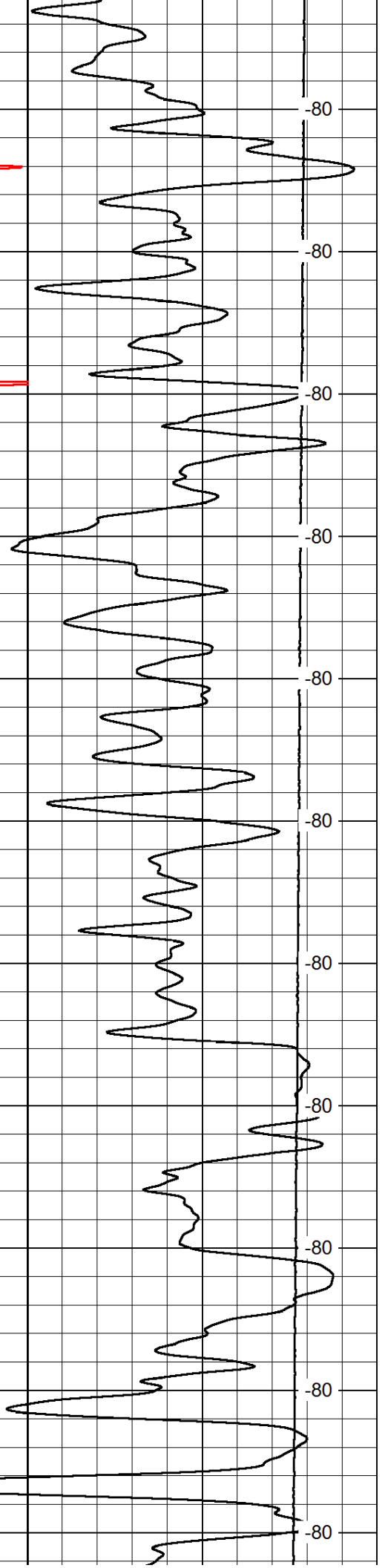
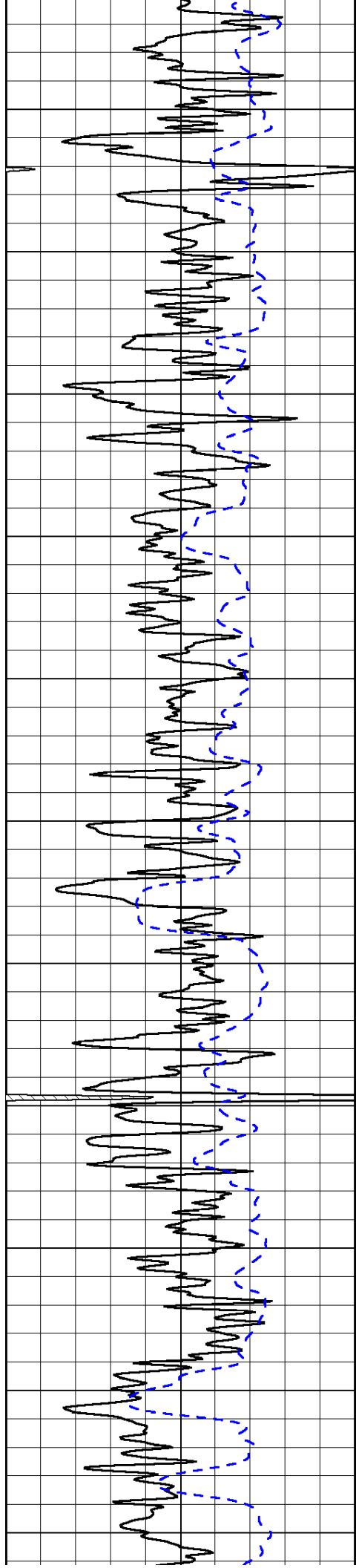
|    |                     |     |
|----|---------------------|-----|
| 50 | Shallow Resistivity | 500 |
| 50 | Deep Resistivity    | 500 |

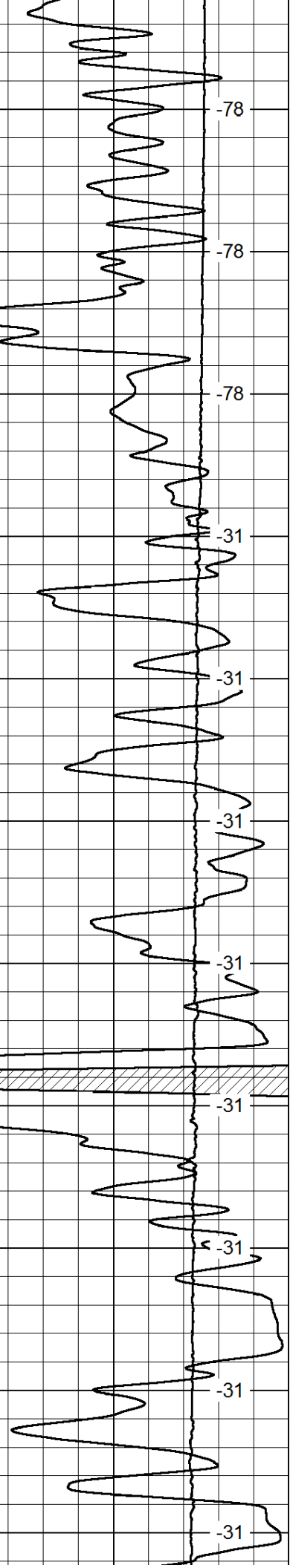
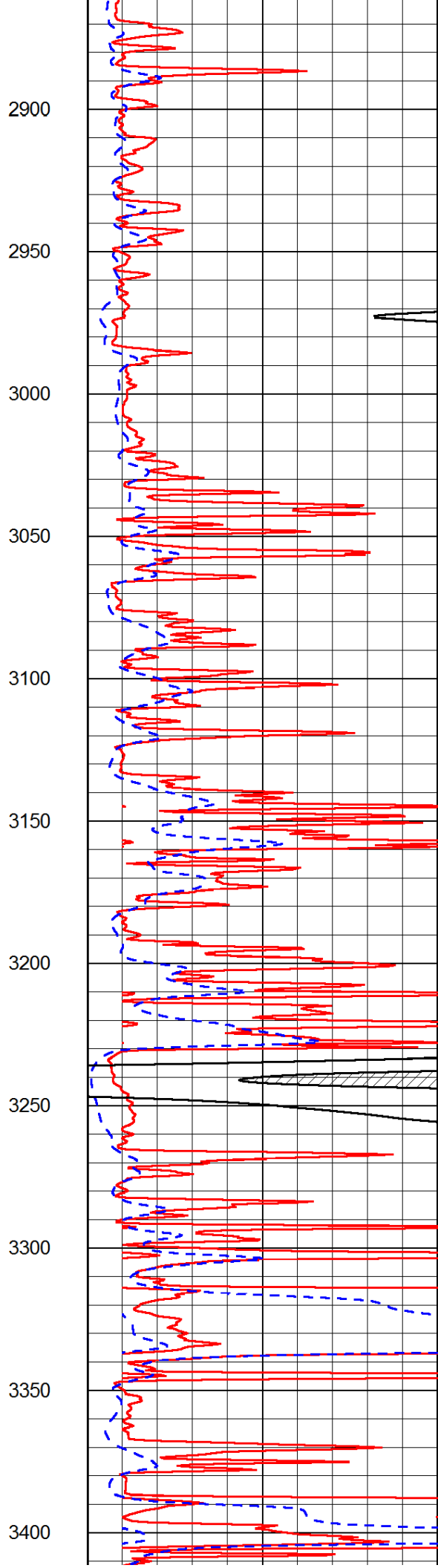
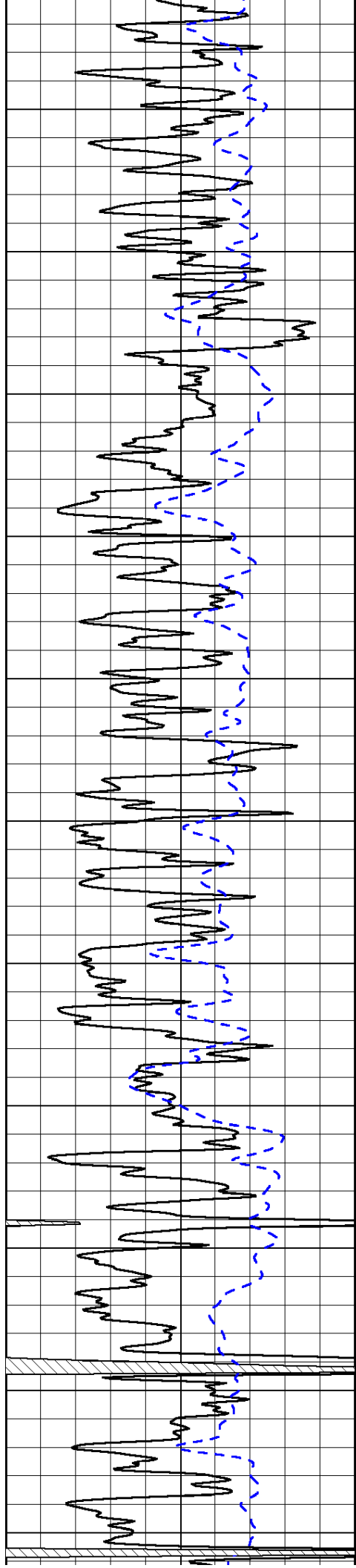


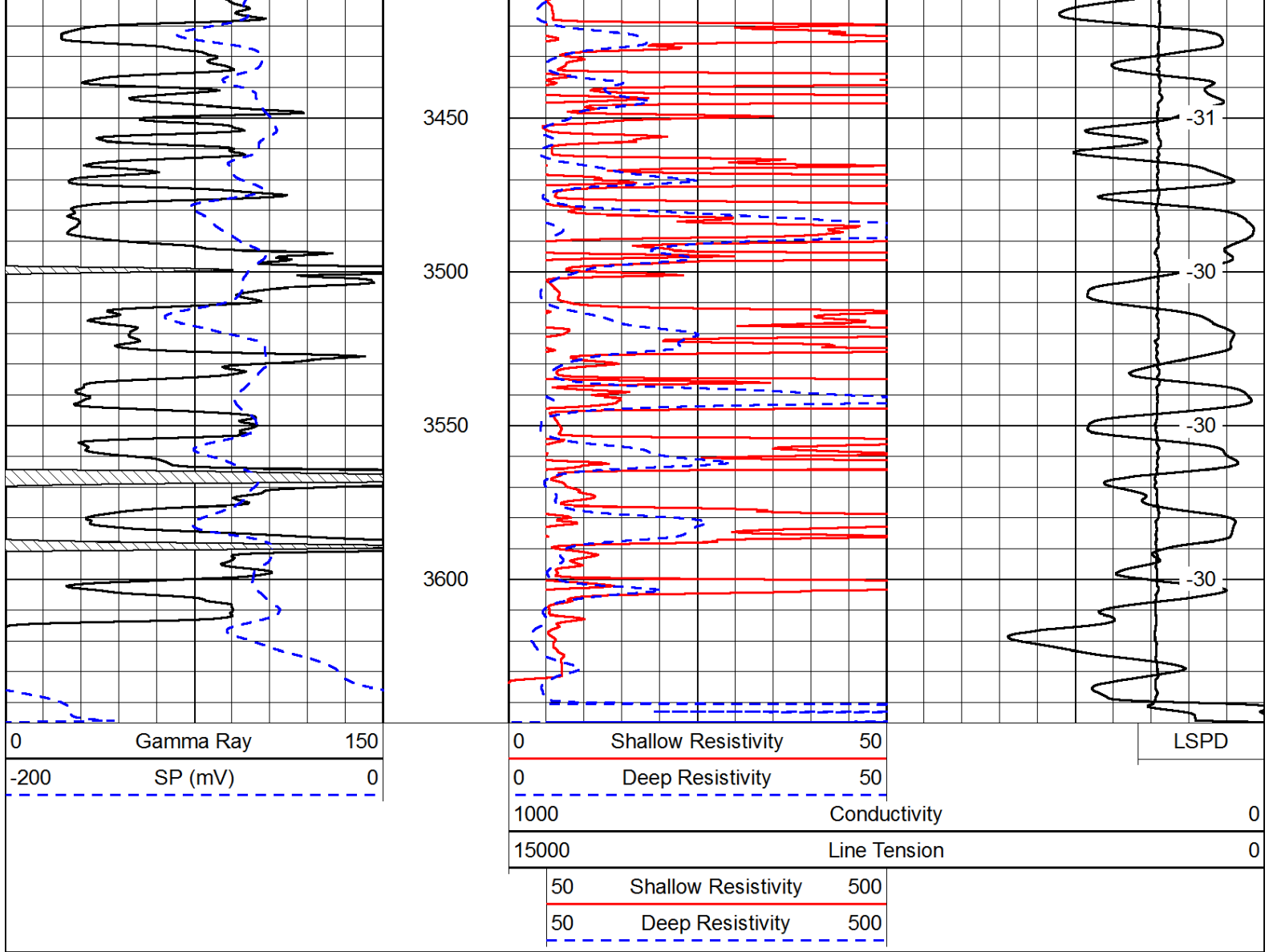




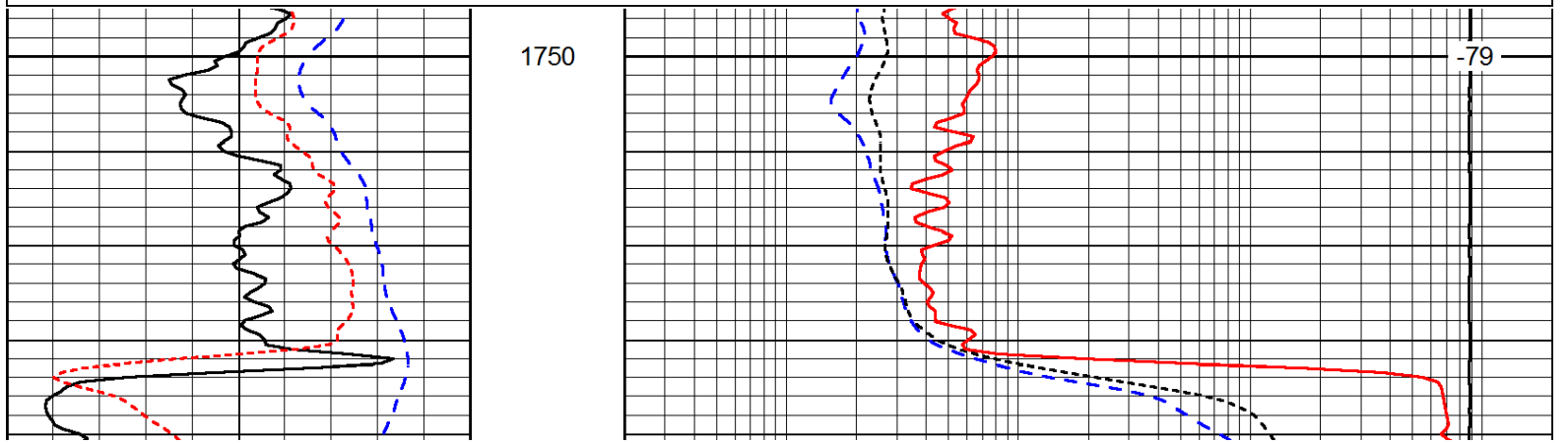
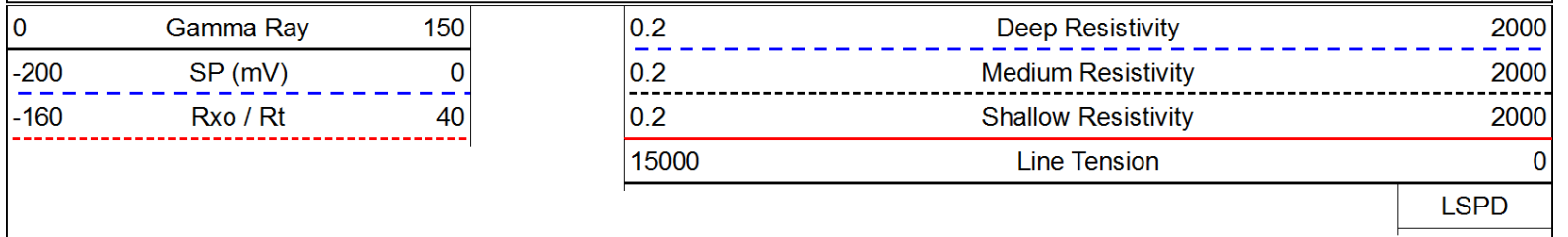




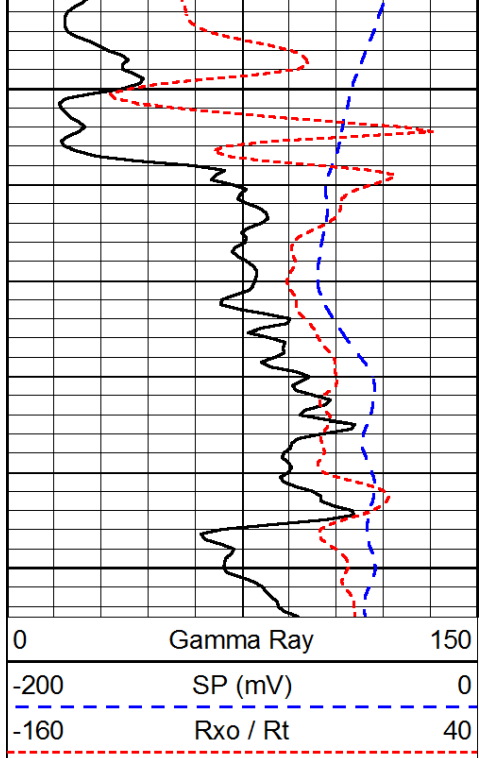




Database File: c:\warrior\data\bach\_gpw unit no.1\bachhd.db  
 Dataset Pathname: dil/bachstk  
 Presentation Format: dil  
 Dataset Creation: Tue May 22 18:02:16 2012  
 Charted by: Depth in Feet scaled 1:240

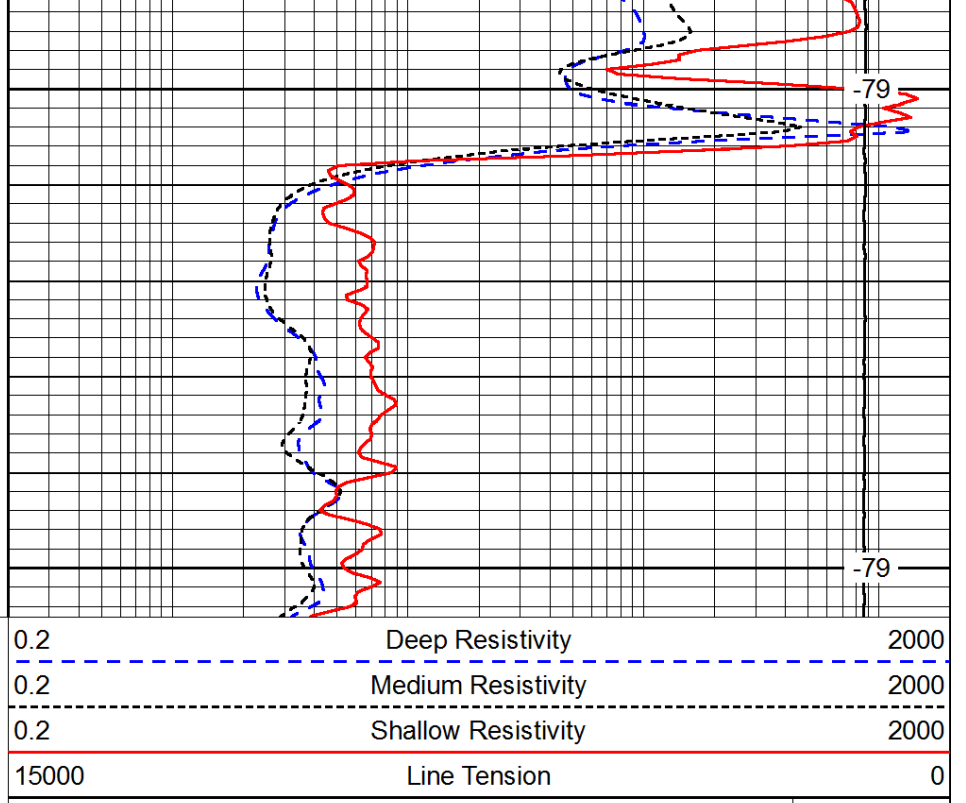






1800

1850

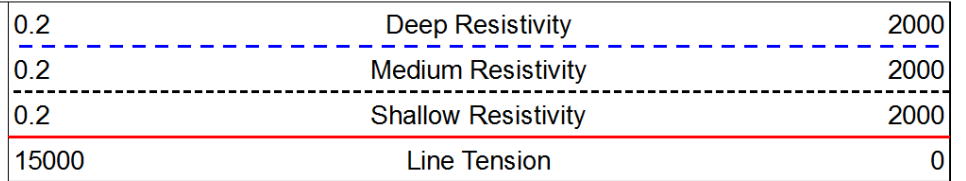
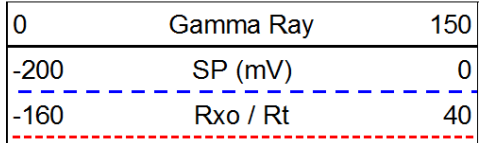


-79

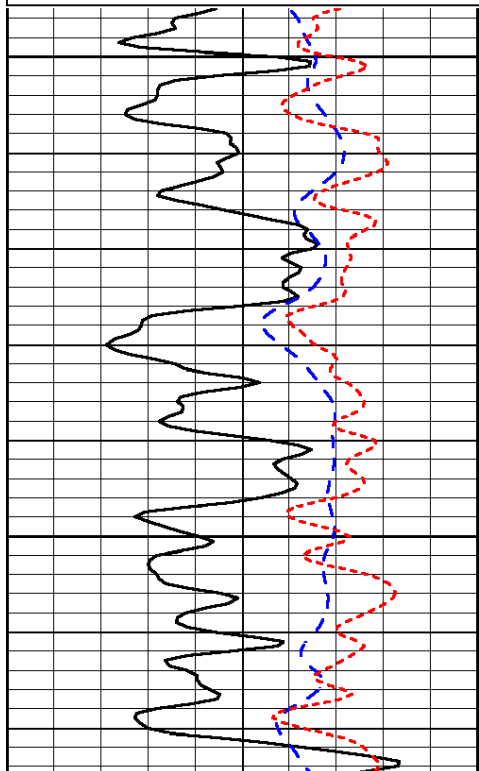
-79

LSPD

Database File: c:\warrior\data\bach\_gp unit no.1\bachhd.db  
 Dataset Pathname: dil/bachstk  
 Presentation Format: dil  
 Dataset Creation: Tue May 22 18:02:16 2012  
 Charted by: Depth in Feet scaled 1:240

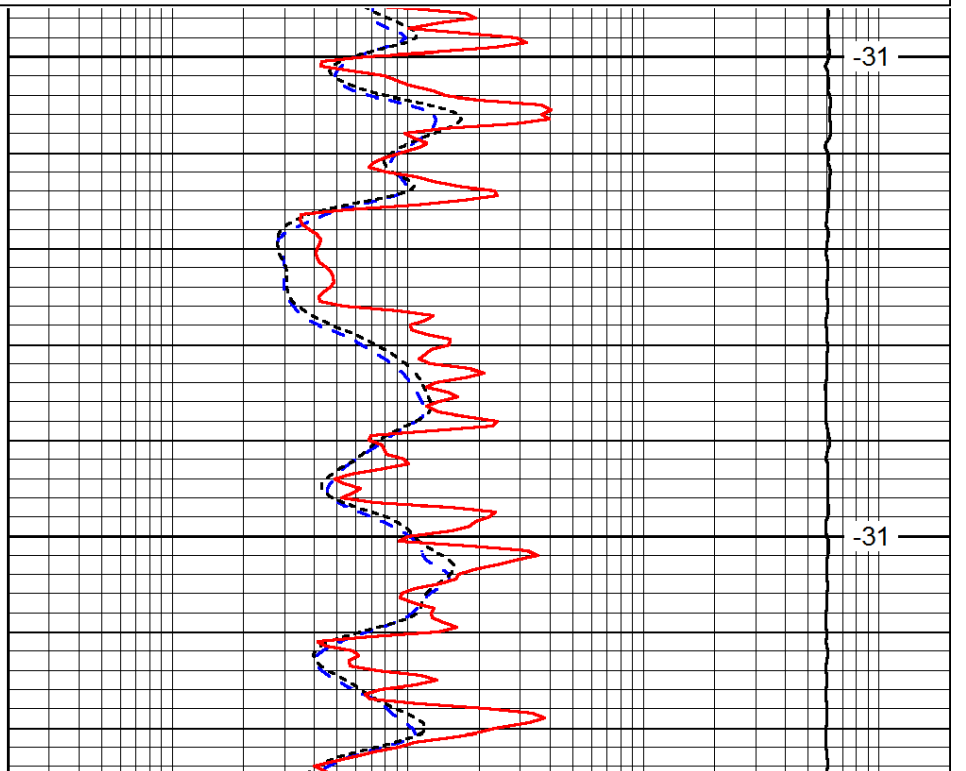


LSPD



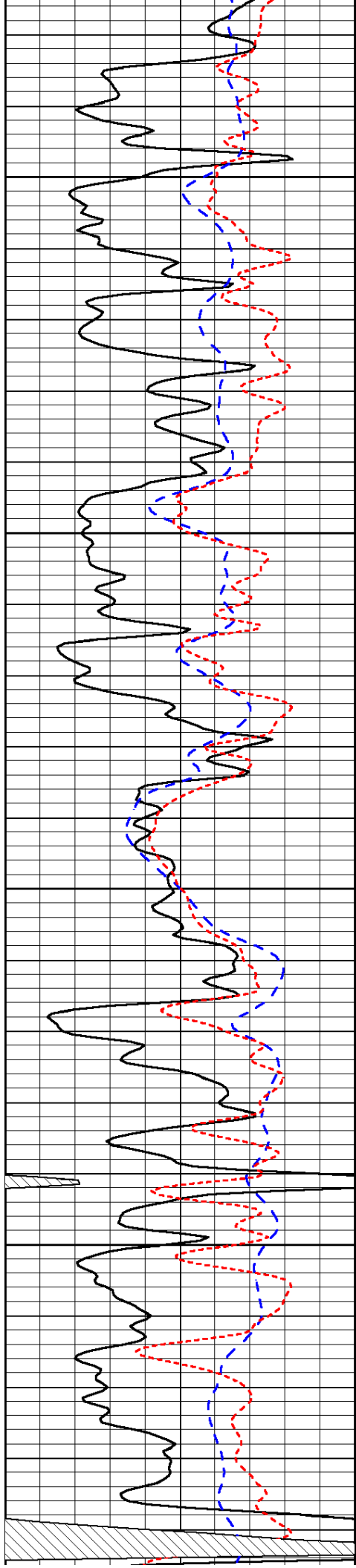
3050

3100



-31

-31

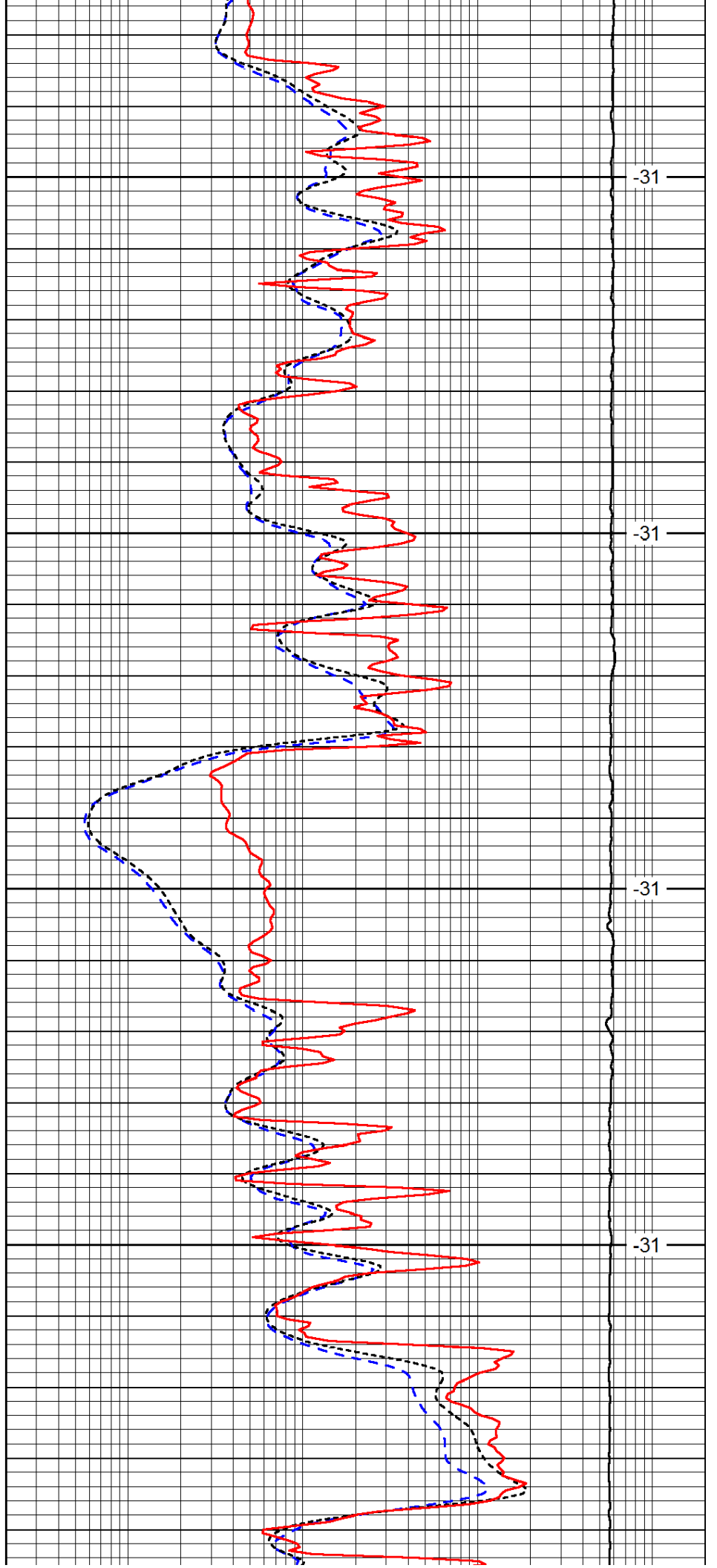


3150

3200

3250

3300

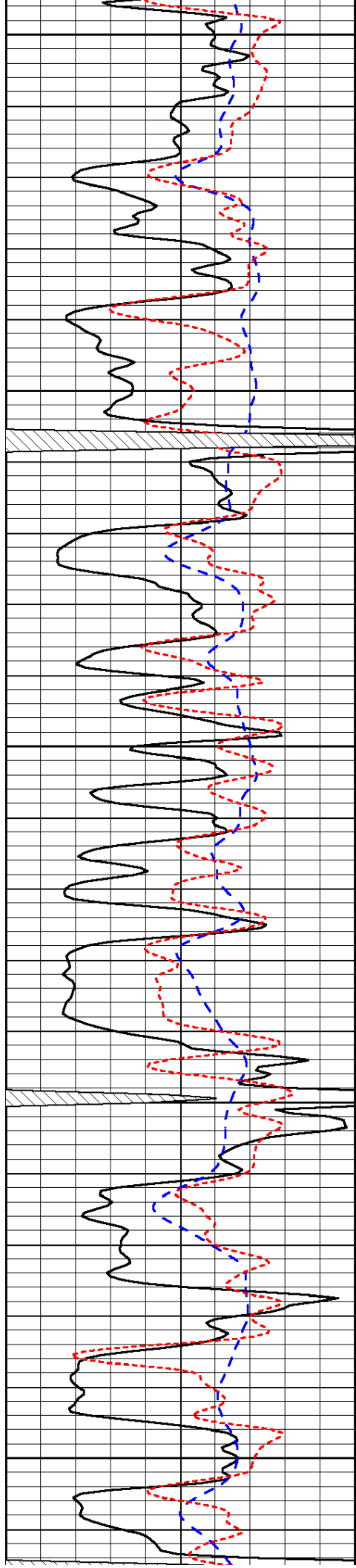


-31

-31

-31

-31



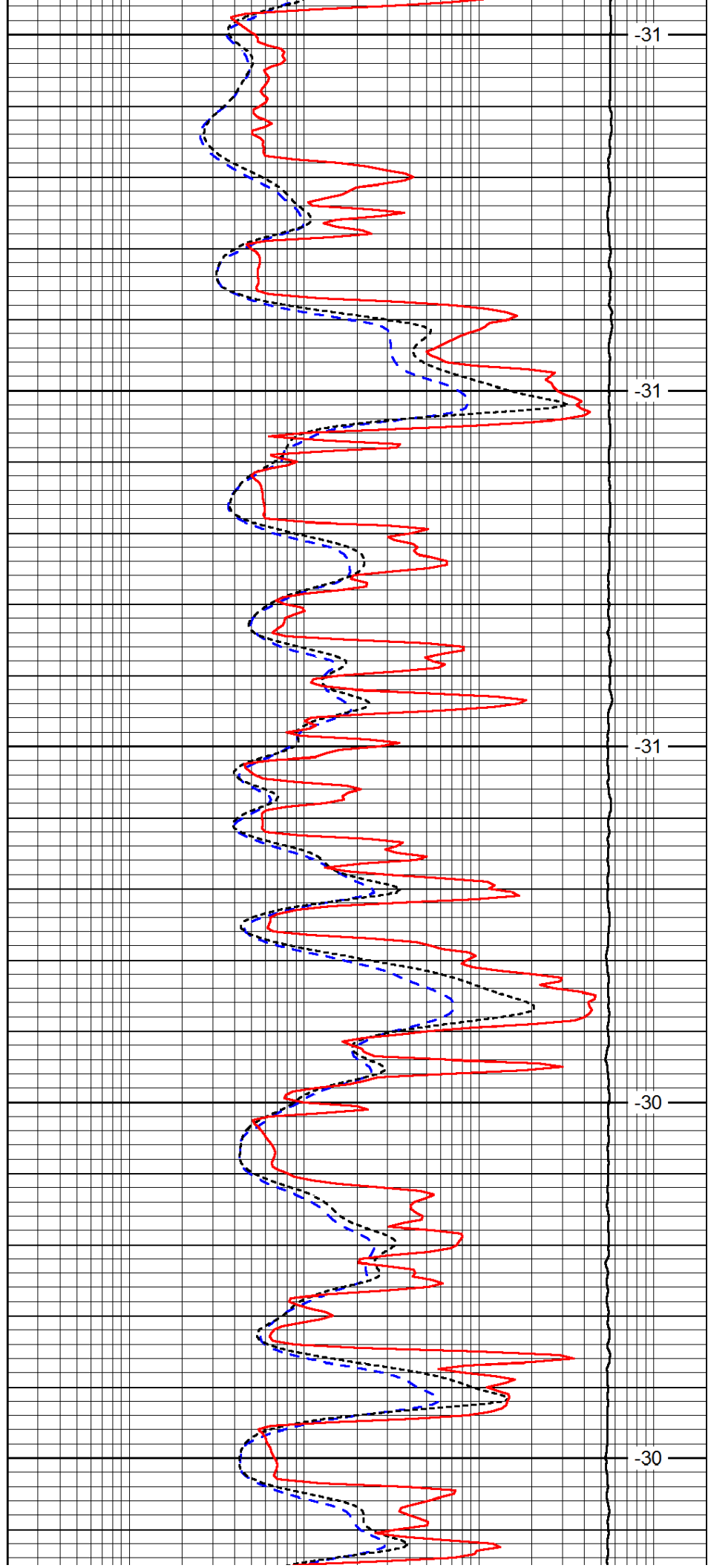
3350

3400

3450

3500

3550



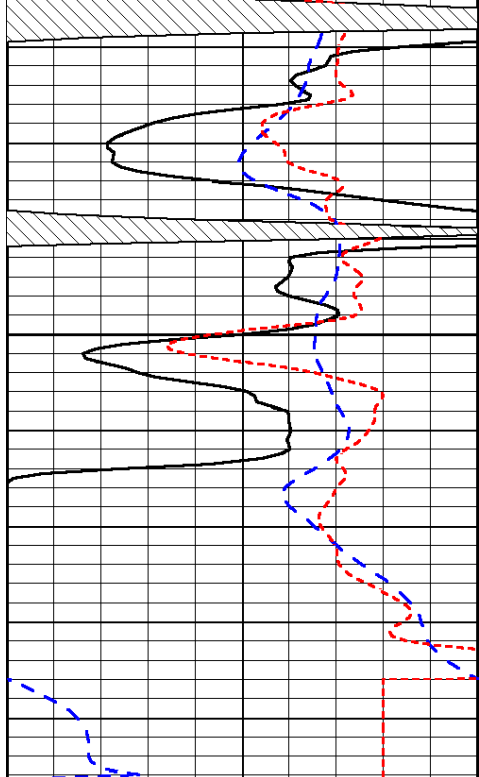
-31

-31

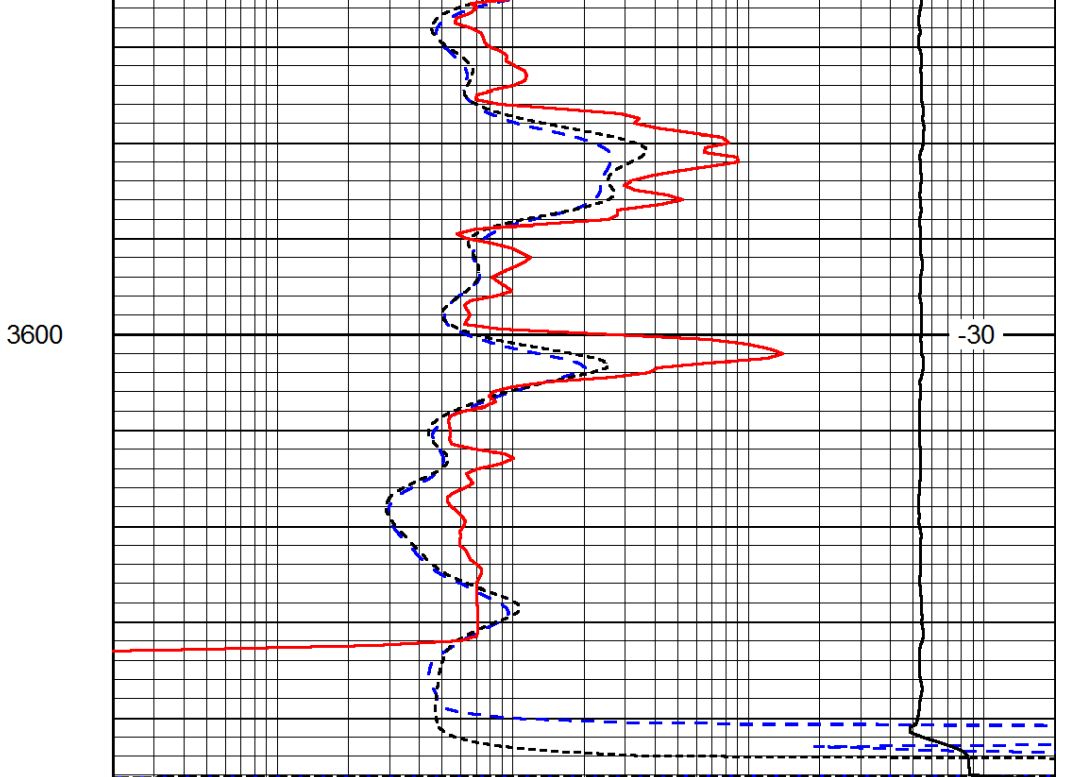
-31

-30

-30



|      |           |     |
|------|-----------|-----|
| 0    | Gamma Ray | 150 |
| -200 | SP (mV)   | 0   |
| -160 | Rxo / Rt  | 40  |



|       |                     |      |
|-------|---------------------|------|
| 0.2   | Deep Resistivity    | 2000 |
| 0.2   | Medium Resistivity  | 2000 |
| 0.2   | Shallow Resistivity | 2000 |
| 15000 | Line Tension        | 0    |

LSPD