



DIGITAL LOG (785) 625-3858

Dual Compensated Porosity Log

15-147-20,678-00-00

API No.

Company **Bach Oil Production**
 Well **GPW Unit No.1**
 Field **Wildcat**
 County **Phillips** State **Kansas**

Location **SW SW NE SW
 1427' FNL & 1415' FEL**
 Sec: **27** Twp: **1S** Rge: **19W**

Other Services
 DIL
 MEL

Permanent Datum **Ground Level** Elevation **2141**
 Log Measured From **Kelly Bushing** 5 Ft. Above Perm. Datum
 Drilling Measured From **Kelly Bushing**

Elevation
 K.B. 2146
 D.F.
 G.L. 2141

Date	5/22/2012
Run Number	One
Type Log	CNL / CDL
Depth Driller	3640
Depth Logger	3641
Bottom Logged Interval	3620
Top Logged Interval	3050
Type Fluid In Hole	Chemical
Salinity, PPM CL	800
Density	9.1
Level	Full
Max. Rec. Temp. F	112
Operating Rig Time	3 1/2 Hours
Equipment -- Location	17 Hays
Recorded By	C. Desaire
Witnessed By	Bob Petersen

Borehole Record		Casing Record	
Run No.	Bit From To	Size	Wgt. Wt.
1	12.25 00	232	8.625 24#
2	7.875 232	3640	

<<< Fold Here >>>

All interpretations are opinions based on inferences from electrical or other measurements and we cannot and do not guarantee the accuracy or correctness of any interpretation, and we shall not, except in the case of gross or willful negligence on our part, be liable or responsible for any loss, costs, damages, or expenses incurred or sustained by anyone resulting from any interpretation made by any of our officers, agents or employees. These interpretations are also subject to our general terms and conditions set out in our current Price Schedule.

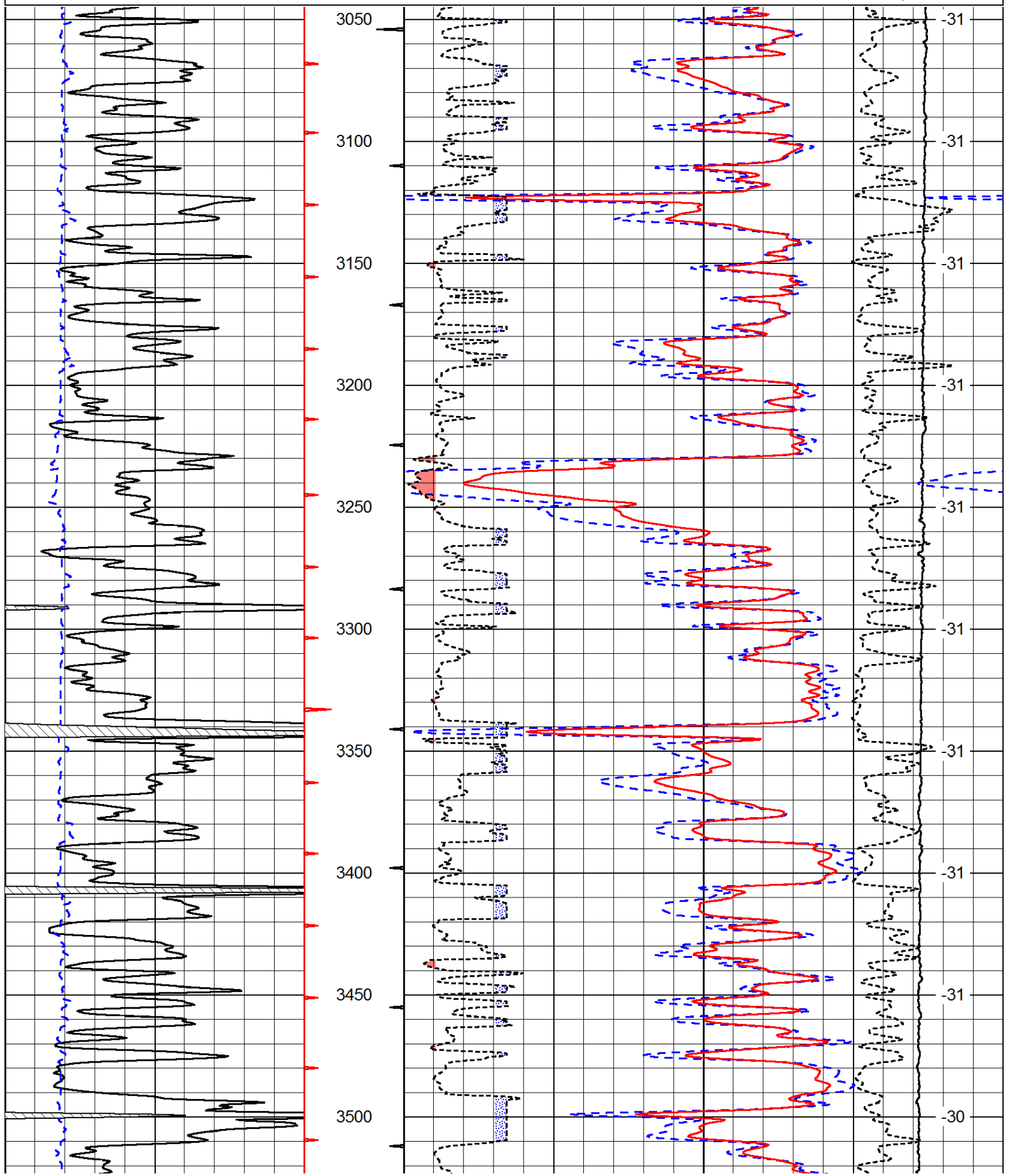
Comments

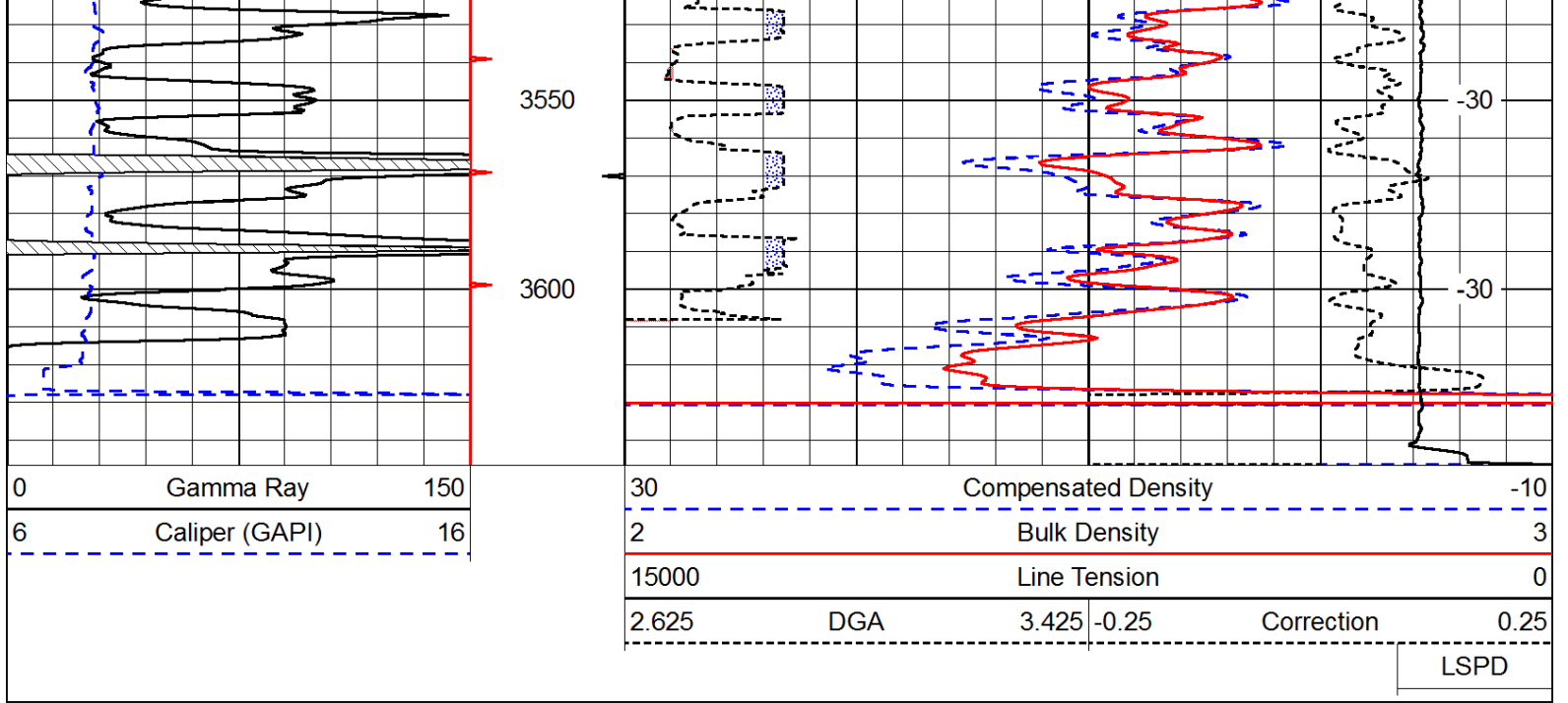
Thank you for using Log-Tech, Inc.
 (785) 625-3858
 Phillipsburg KS, N to Hunter Rd,
 7 W to 700 Rd, 2 1/2 N, E Into

Database File: c:\warrior\data\bach_gpww unit no.1\bachhd.db
 Dataset Pathname: dil/bachstk
 Presentation Format: cdl
 Dataset Creation: Tue May 22 18:02:16 2012
 Charted by: Depth in Feet scaled 1:600

0	Gamma Ray	150
6	Caliper (GAPI)	16

30	Compensated Density		-10
2	Bulk Density		3
15000	Line Tension		0
2.625	DGA	3.425	-0.25
Correction			0.25
LSPD			





Database File: c:\warrior\data\bach_gpw unit no.1\bachhd.db
 Dataset Pathname: dil/bachstk
 Presentation Format: cndlspec
 Dataset Creation: Tue May 22 18:02:16 2012
 Charted by: Depth in Feet scaled 1:240

