



Microresistivity Log

DIGITAL LOG (785) 625-3858

API No. 15-101-22,257-00-00	Company Larson Engineering, Inc.	Other Services CNL/CDL DIL
	Well Splitter-Hilgenberg No. 1-35	
	Field Dighton SW Extension	
	County Lane	State Kansas
	Location SE NE SE NE 1,802' FNL & 62' FEL	
	Sec: 35 Twp: 18S Rge: 29W	Elevation 2806
	Permanent Datum Ground Level Kelly Bushing	Elevation 2799
	Log Measured From Kelly Bushing	7 Ft. Above Perm. Datum
	Drilling Measured From Kelly Bushing	K.B. 2806 D.F. 2799 G.L. 2799

Date	10/6/2010
Run Number	Two
Depth Driller	4650
Depth Logger	4653
Bottom Logged Interval	4652
Top Log Interval	3600
Casing Driller	8.625 @ 262
Casing Logger	256
Bit Size	7.875
Type Fluid in Hole	Chemical
Salinity, ppm CL	3200
Density / Viscosity	9.2 62
pH / Fluid Loss	11.0 8.4
Source of Sample	Flowline
Rm @ Meas. Temp	.48 @ 80
Rmf @ Meas. Temp	.36 @ 80
Rmc @ Meas. Temp	.65 @ 80
Source of Rmf / Rmc	Charts
Rm @ BHT	.31 @ 123
Operating Rig Time	3 Hours
Max Rec. Temp. F	123
Equipment Number	10
Location	Hays
Recorded By	J. Long
Witnessed By	Vern Schrag

<<< Fold Here >>>

All interpretations are opinions based on inferences from electrical or other measurements and we cannot and do not guarantee the accuracy or correctness of any interpretation, and we shall not, except in the case of gross or willful negligence on our part, be liable or responsible for any loss, costs, damages, or expenses incurred or sustained by anyone resulting from any interpretation made by any of our officers, agents or employees. These interpretations are also subject to our general terms and conditions set out in our current Price Schedule.

Comments

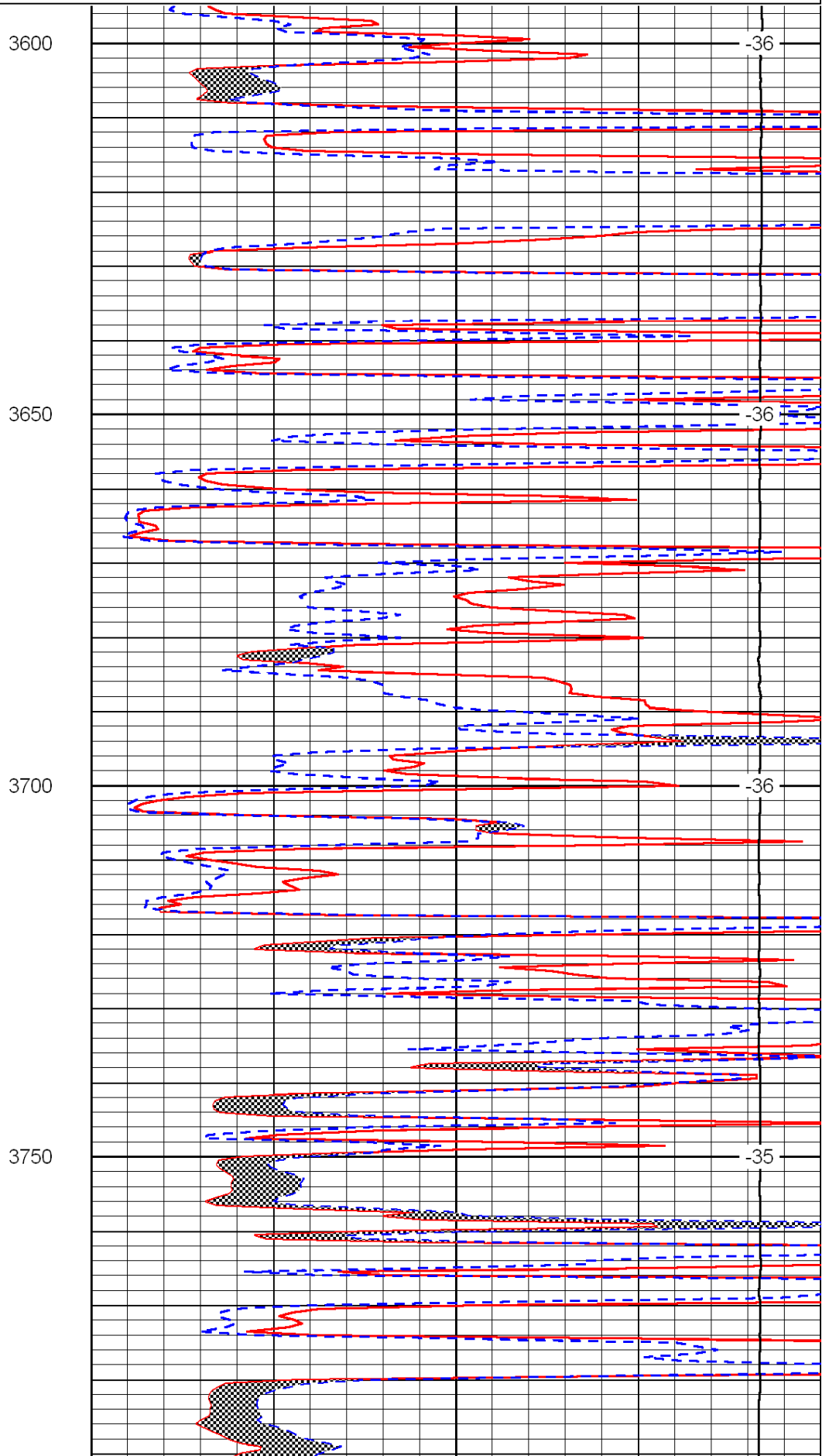
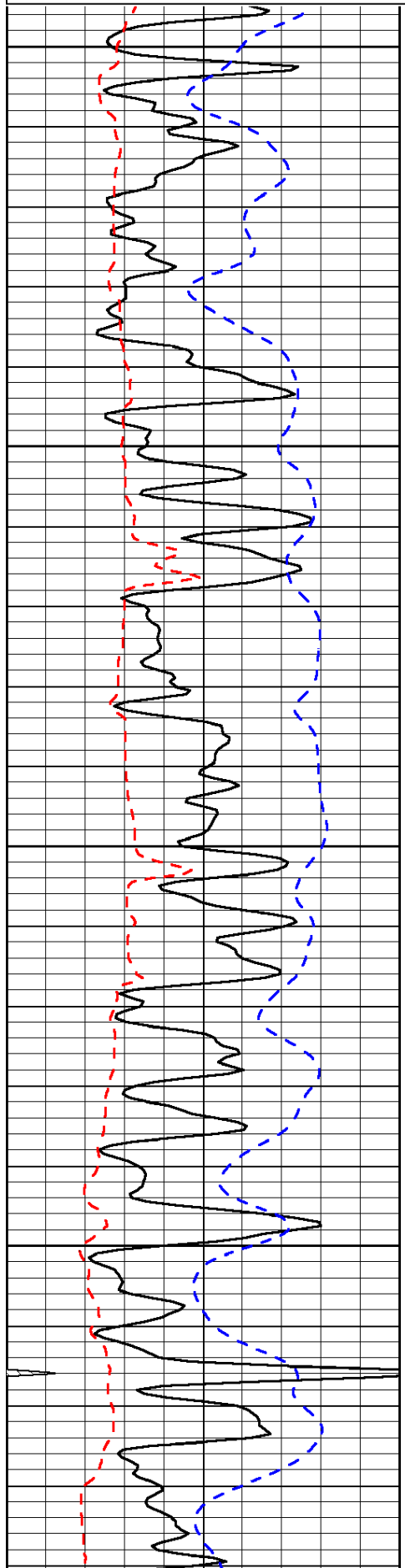
Thank you for using Log-Tech, Inc.
(785) 625-3858

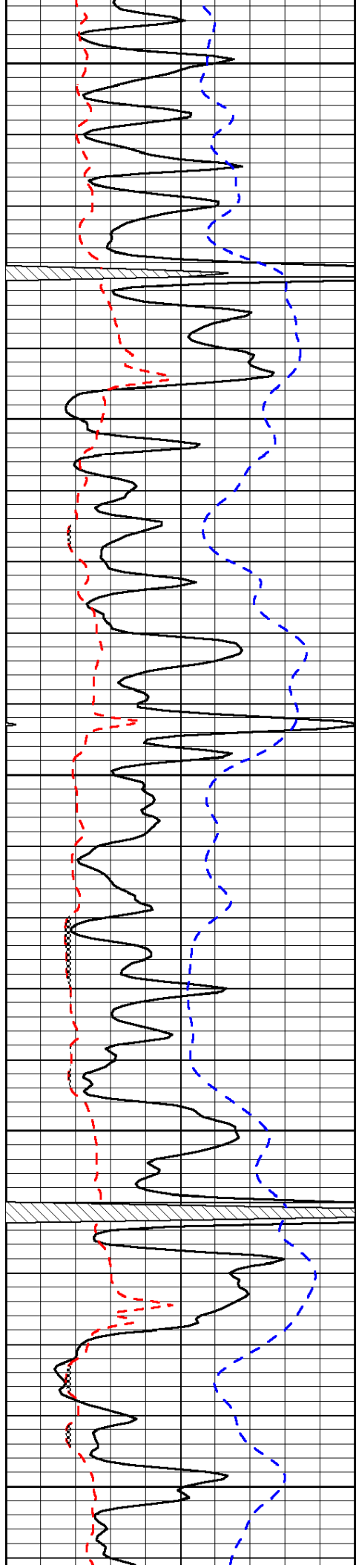
Dighton, 2 South to 130 Rd, 1 1/2 West to Kaw Rd, 1/4 South, West Into

0	Gamma Ray	150
6	Micro Log Caliper (GAPI)	16
-200	SP (mV)	0

0	Micro Inverse 1 X 1	40
0	Micro Normal 2"	40
15000	Line Weight	0

LSPD





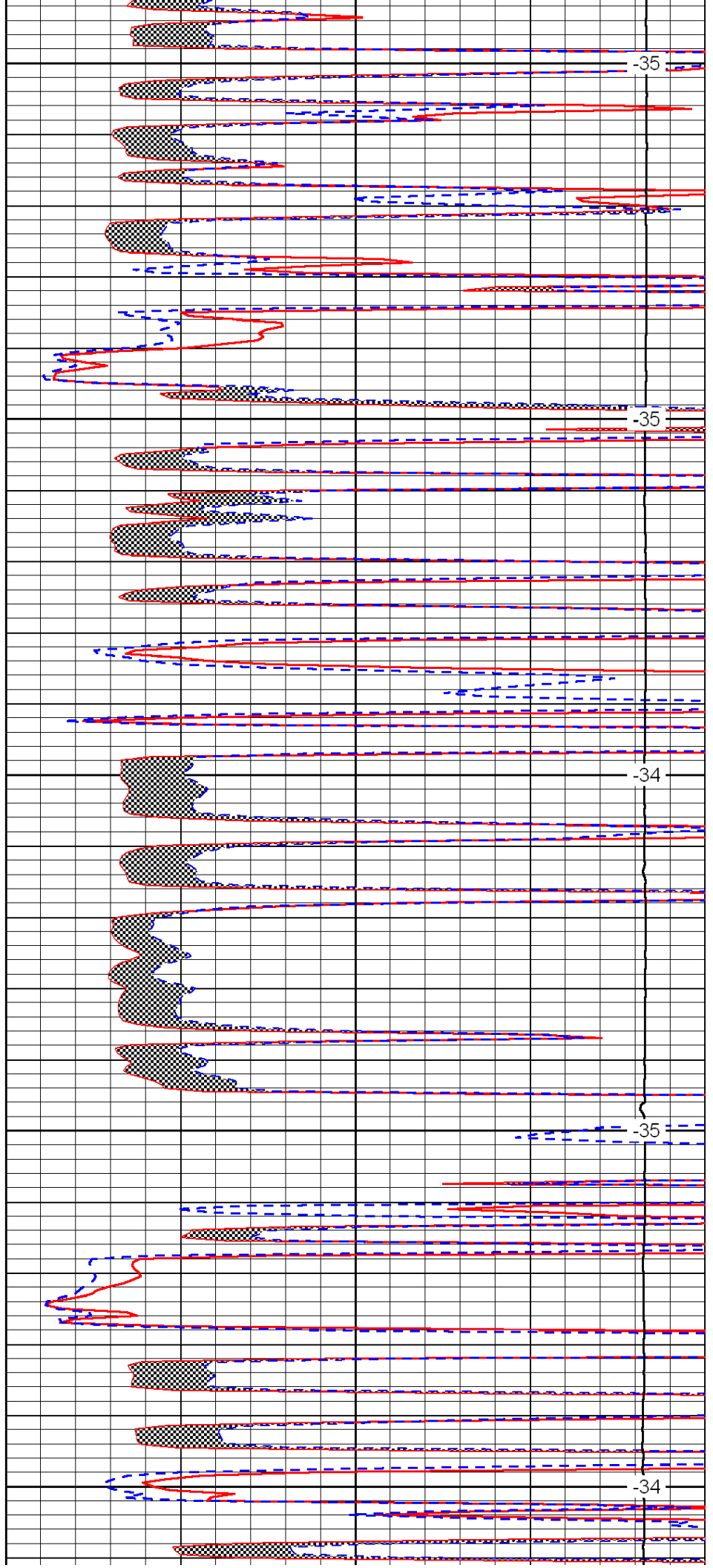
3800

3850

3900

3950

4000



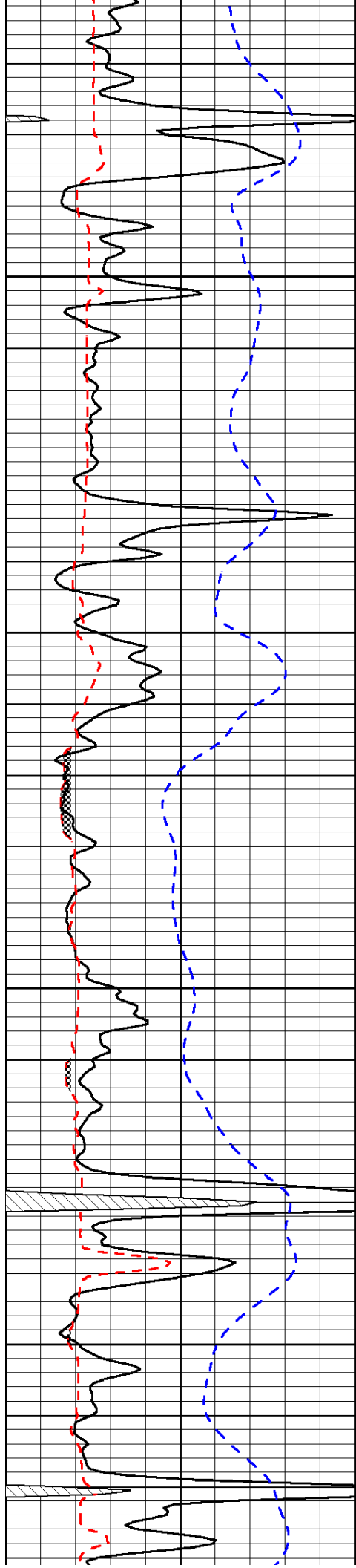
-35

-35

-34

-35

-34

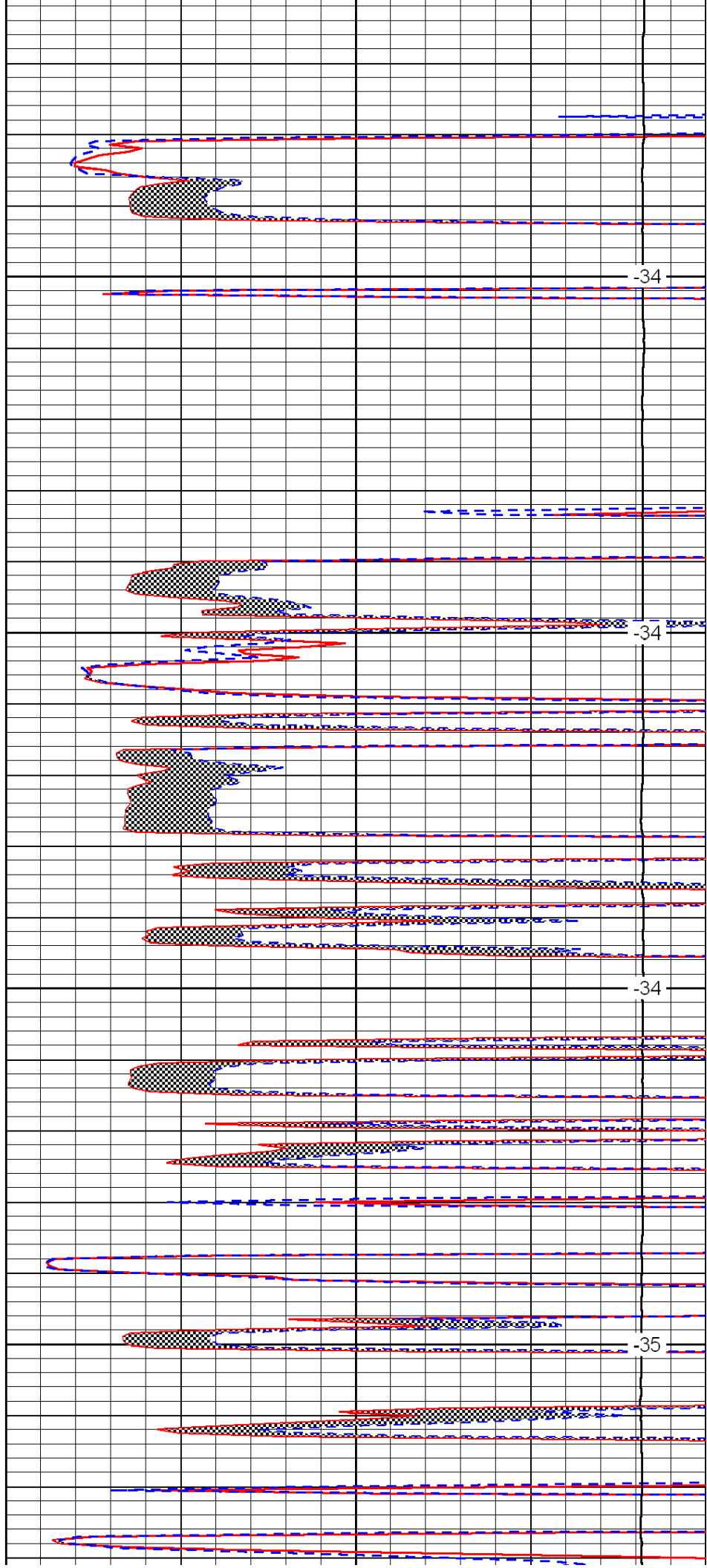


4050

4100

4150

4200

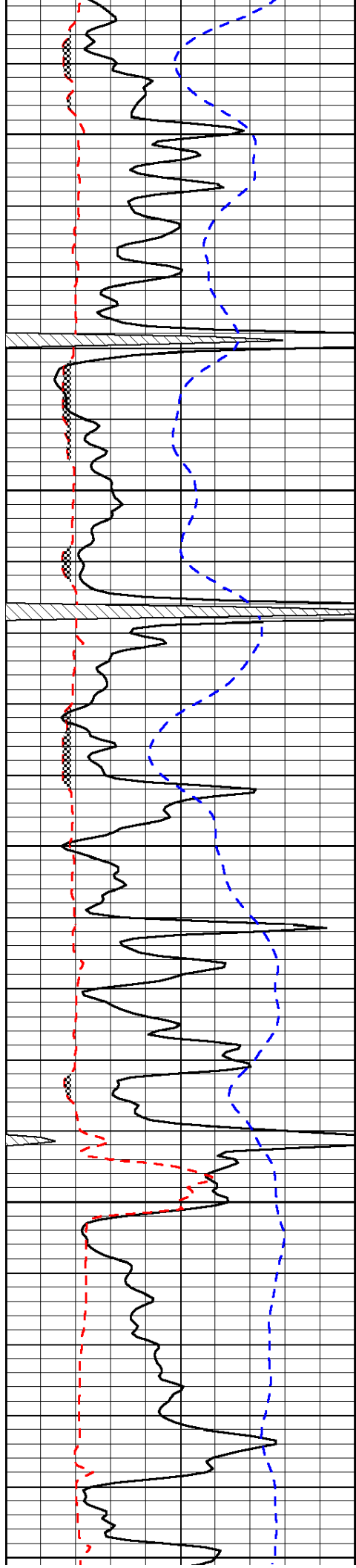


-34

-34

-34

-35



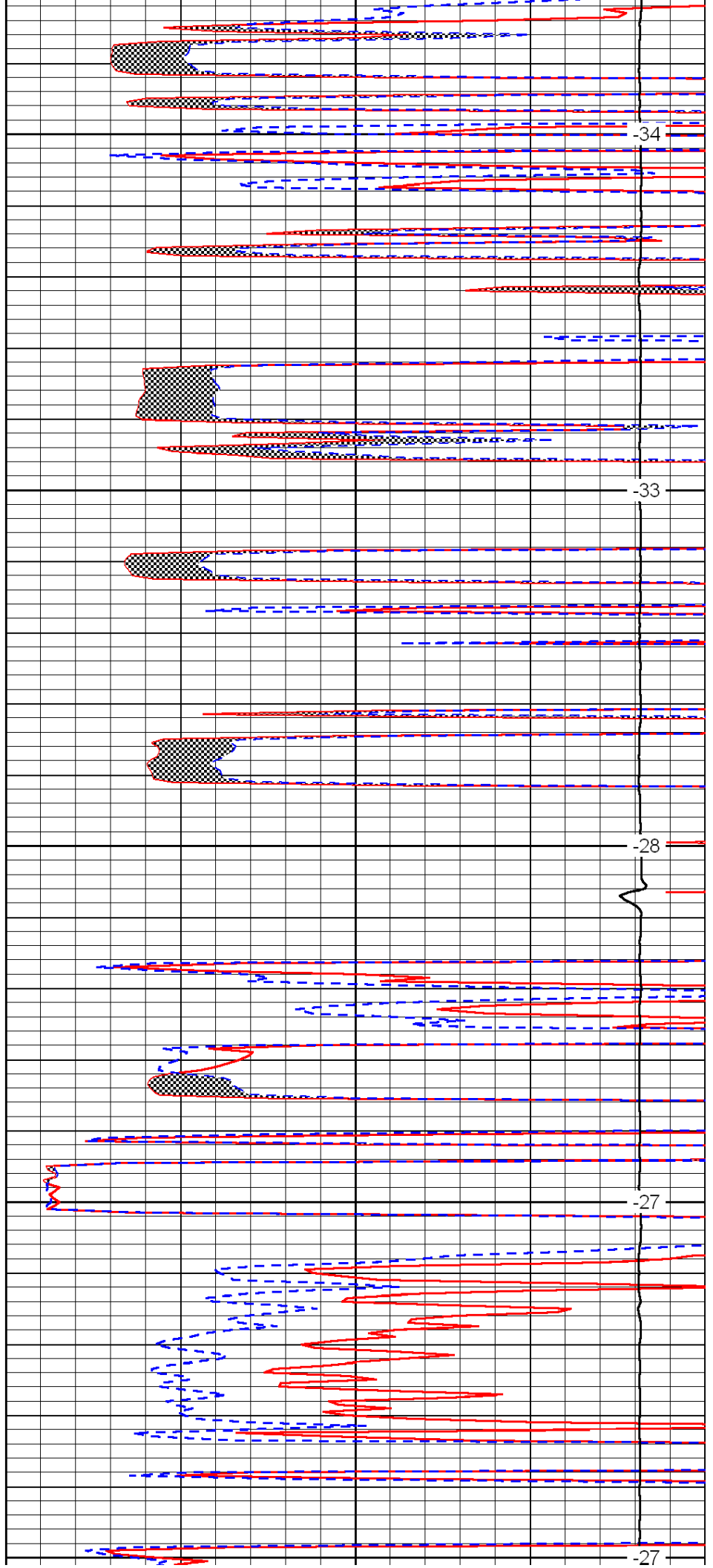
4250

4300

4350

4400

4450



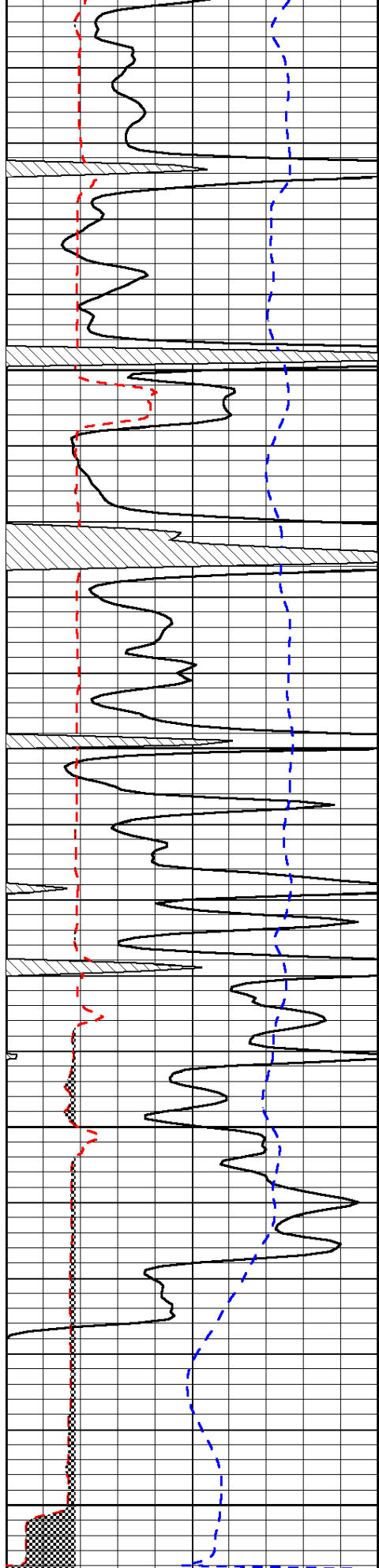
-34

-33

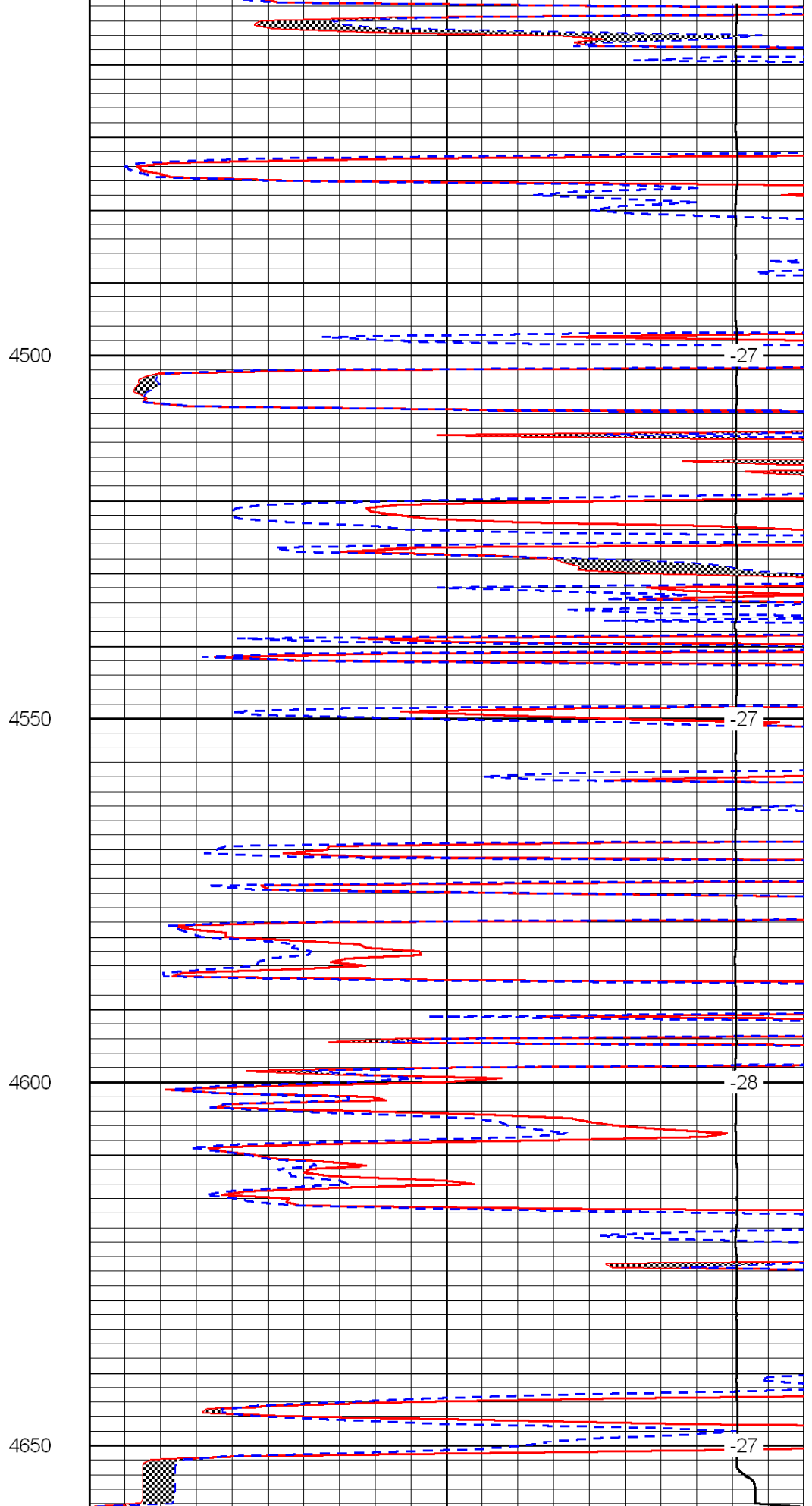
-28

-27

-27



0 Gamma Ray 150
 6 Micro Log Caliper (GAPI) 16
 -200 SP (mV) 0



0 Micro Inverse 1 X 1 40
 0 Micro Normal 2'' 40
 15000 Line Weight 0

