



# Dual Compensated Porosity Log

DIGITAL LOG (785) 625-3858

API No. 15-101-22,257-00-00

Company Larson Engineering, Inc.  
Well Splitter-Hilgenberg No. 1-35  
Field Dighton SW Extension  
County Lane State Kansas

Location SE NE SE NE  
1,802' FNL & 62' FEL

Other Services  
DIL  
MEL

Permament Datum Ground Level Elevation 2799  
Log Measured From Kelly Bushing 7 Ft. Above Perm. Datum  
Drilling Measured From Kelly Bushing

Sec: 35 Twp: 18S Rge: 29W

Elevation  
K.B. 2806  
D.F. G.L. 2799

Date 10/6/2010

Run Number One

Type Log CNL / CDL

Depth Driller 4650

Depth Logger 4653

Bottom Logged Interval 4632

Top Logged Interval 3600

Type Fluid In Hole Chemical

Salinity, PPM CL 3200

Density 9.2

Level Full

Max. Rec. Temp. F 123

Operating Rig Time 3 Hours

Equipment -- Location 10 Days

Recorded By J. Long

Witnessed By Vern Schrag

| Borehole Record |       |      |      | Casing Record |      |      |     |
|-----------------|-------|------|------|---------------|------|------|-----|
| Run No.         | Bit   | From | To   | Size          | Wgt. | From | To  |
| 1               | 12.25 | 00   | 262  | 8.625         | 24#  | 00   | 262 |
| 2               | 7.875 | 262  | 4650 |               |      |      |     |
|                 |       |      |      |               |      |      |     |
|                 |       |      |      |               |      |      |     |
|                 |       |      |      |               |      |      |     |
|                 |       |      |      |               |      |      |     |
|                 |       |      |      |               |      |      |     |
|                 |       |      |      |               |      |      |     |
|                 |       |      |      |               |      |      |     |

<<< Fold Here >>>

All interpretations are opinions based on inferences from electrical or other measurements and we cannot and do not guarantee the accuracy or correctness of any interpretation, and we shall not, except in the case of gross or willful negligence on our part, be liable or responsible for any loss, costs, damages, or expenses incurred or sustained by anyone resulting from any interpretation made by any of our officers, agents or employees. These interpretations are also subject to our general terms and conditions set out in our current Price Schedule.

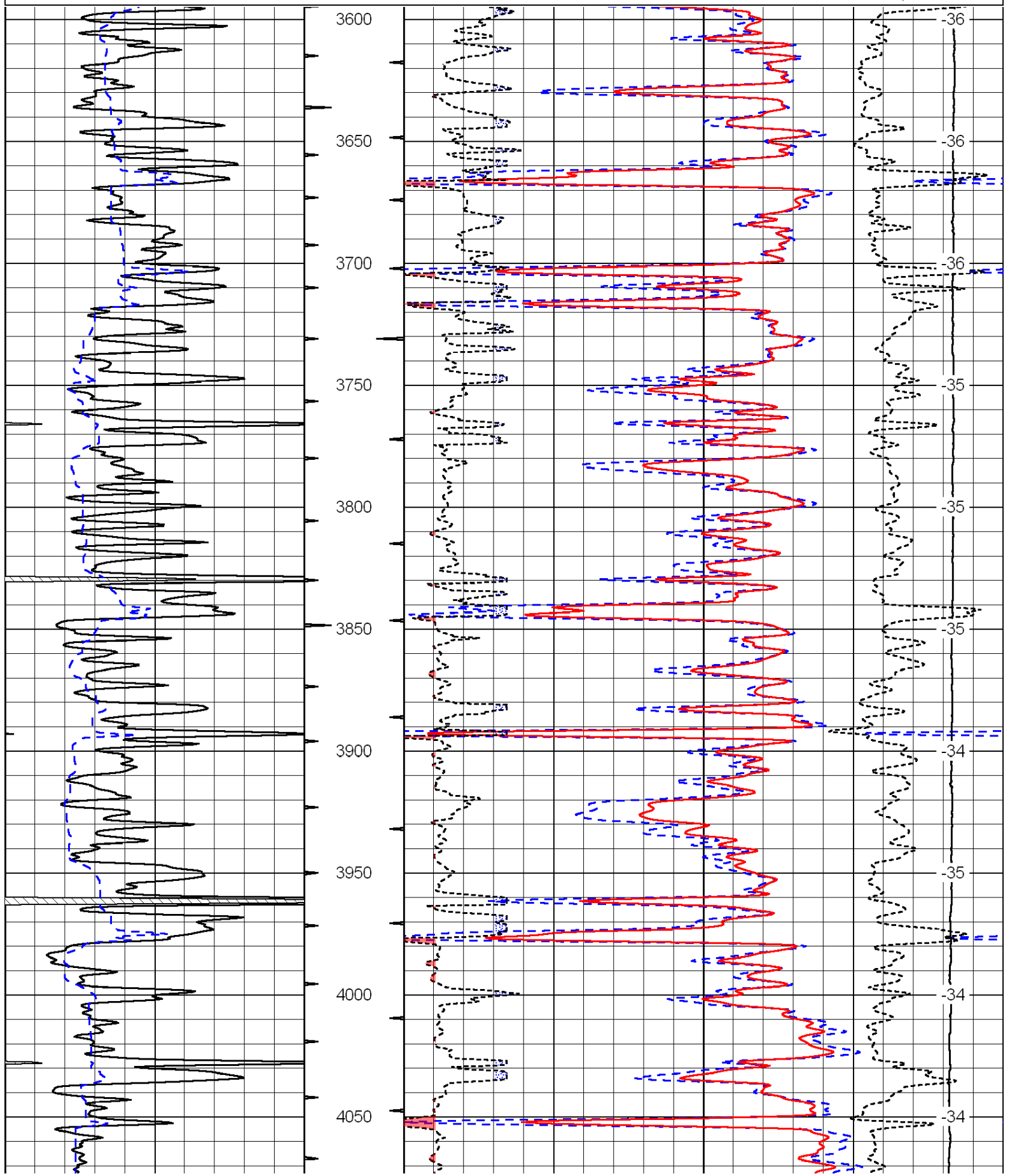
Comments

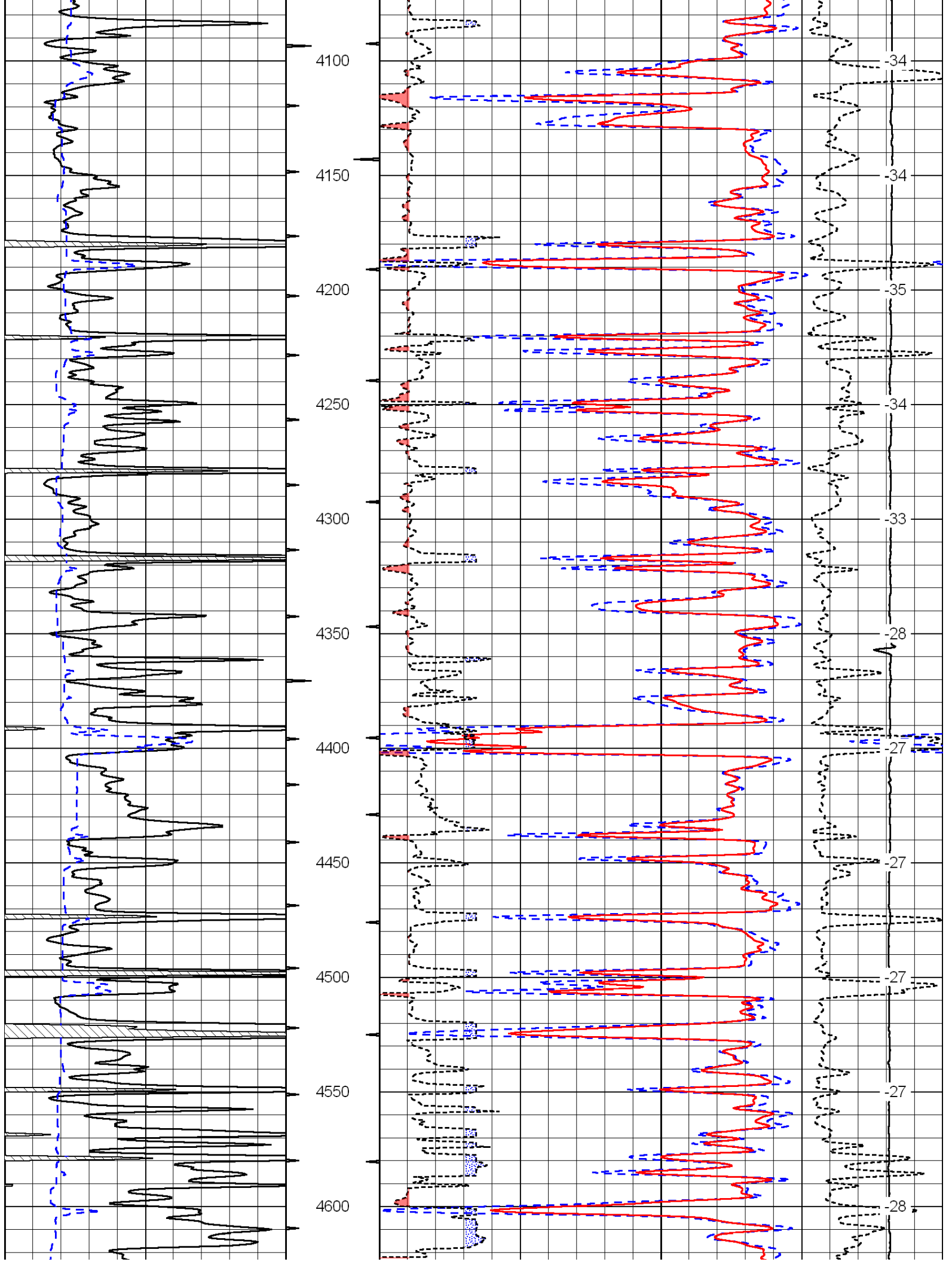
Thank you for using Log-Tech, Inc.  
(785) 625-3858

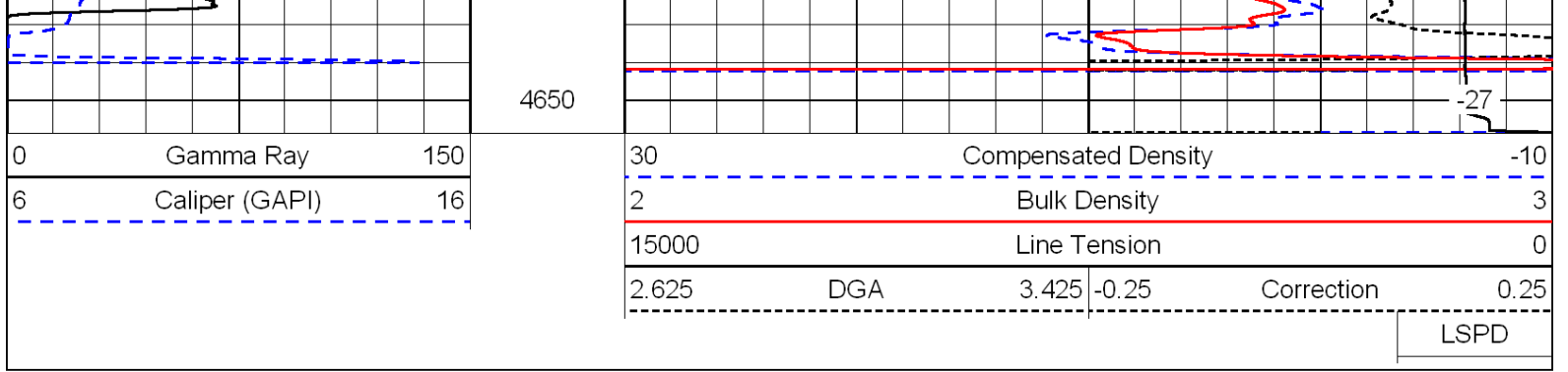
Dighton, 2 South to 130 Rd, 1 1/2 West to Kaw Rd, 1/4 South, West Into

|   |                |     |
|---|----------------|-----|
| 0 | Gamma Ray      | 150 |
| 6 | Caliper (GAPI) | 16  |

|       |                     |       |            |
|-------|---------------------|-------|------------|
| 30    | Compensated Density |       | -10        |
| 2     | Bulk Density        |       | 3          |
| 15000 | Line Tension        |       | 0          |
| 2.625 | DGA                 | 3.425 | -0.25      |
|       |                     |       | Correction |
|       |                     |       | 0.25       |
| LSPD  |                     |       |            |







Database File: c:\warrior\data\larson\_splitter-hilgenberg no. 1-35\larson.db  
 Dataset Pathname: dil\larstck  
 Presentation Format: cndlspec  
 Dataset Creation: Wed Oct 06 19:45:20 2010  
 Charted by: Depth in Feet scaled 1:240

