



DIGITAL LOG (785) 625-3858

Dual Induction Log

API No. 15-101-22,257-00-00

Company Larson Engineering, Inc.
 Well Splitter-Hilgenberg No. 1-35
 Field Dighton SW Extension
 County Lane State Kansas

Location SE NE SE NE
 1,802' FNL & 62' FEL

Other Services
 CNL/CDL
 MEL

Permanent Datum Ground Level Elevation 2799
 Log Measured From Kelly Bushing 7 Ft. Above Perm. Datum
 Drilling Measured From Kelly Bushing

Sec: 35 Twp: 18S Rge: 29W

Elevation
 K.B. 2806
 D.F. 2799
 G.L. 2799

Date	10/6/2010
Run Number	One
Depth Driller	4650
Depth Logger	4653
Bottom Logged Interval	4652
Top Log Interval	250
Casing Driller	8.625 @ 262
Casing Logger	256
Bit Size	7.875
Type Fluid in Hole	Chemical
Salinity, ppm CL	3200
Density / Viscosity	9.2 62
pH / Fluid Loss	11.0 8.4
Source of Sample	Flowline
Rm @ Meas. Temp	.48 @ 80
Rmf @ Meas. Temp	.36 @ 80
Rmc @ Meas. Temp	.65 @ 80
Source of Rmf / Rmc	Charts
Rm @ BHT	.31 @ 123
Operating Rig Time	3 Hours
Max Rec. Temp. F	123
Equipment Number	10
Location	Hays
Recorded By	J. Long
Witnessed By	Vern Schrag

<<< Fold Here >>>

All interpretations are opinions based on inferences from electrical or other measurements and we cannot and do not guarantee the accuracy or correctness of any interpretation, and we shall not, except in the case of gross or willful negligence on our part, be liable or responsible for any loss, costs, damages, or expenses incurred or sustained by anyone resulting from any interpretation made by any of our officers, agents or employees. These interpretations are also subject to our general terms and conditions set out in our current Price Schedule.

Comments

Thank you for using Log-Tech, Inc.
 (785) 625-3858

Dighton, 2 South to 130 Rd, 1 1/2 West to Kaw Rd, 1/4 South, West Into

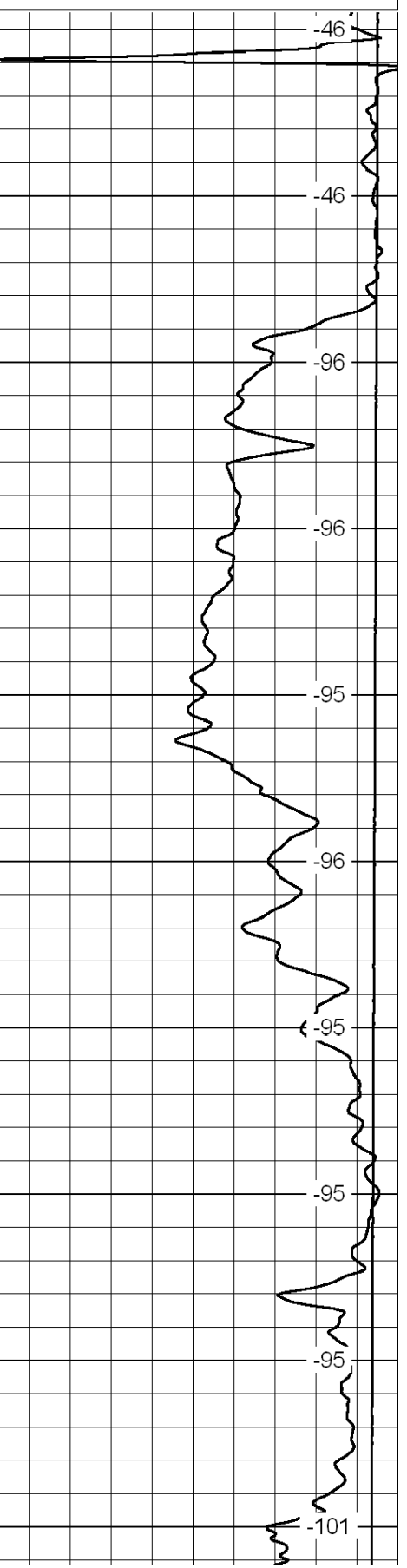
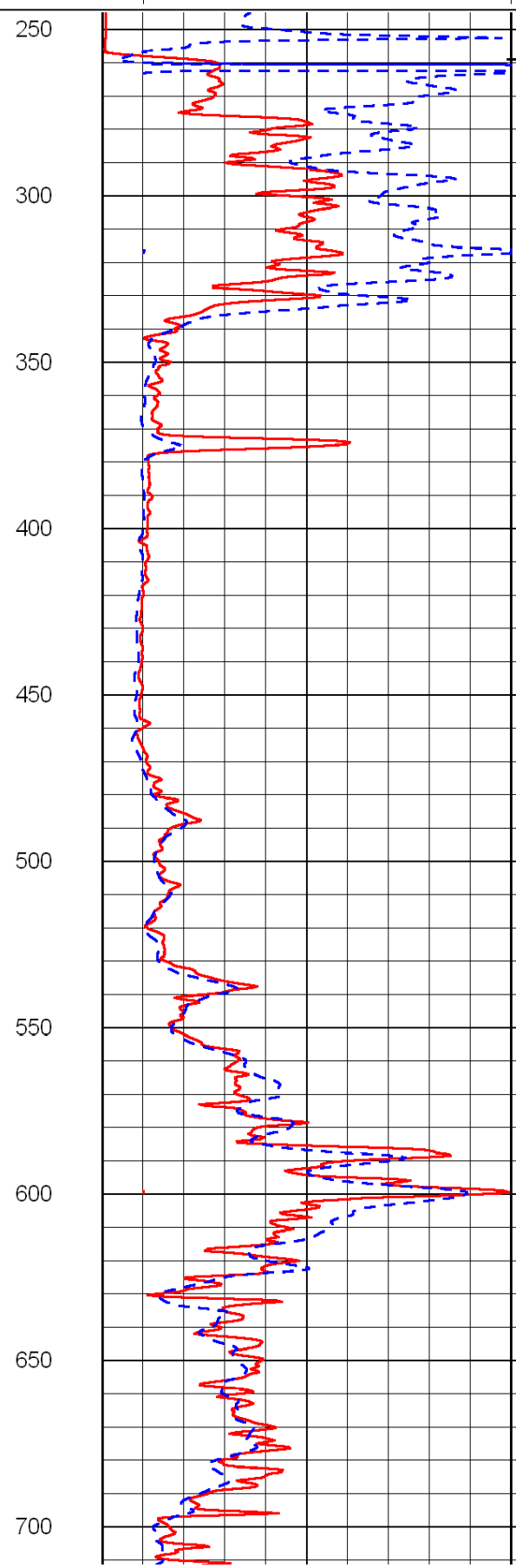
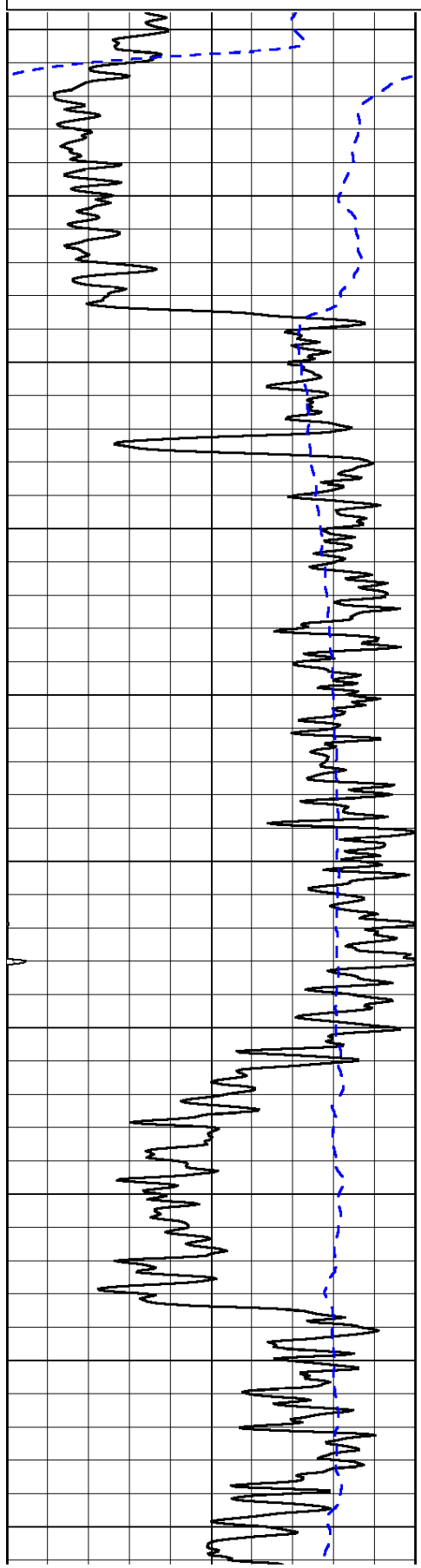
0	Gamma Ray	150
-200	SP (mV)	0

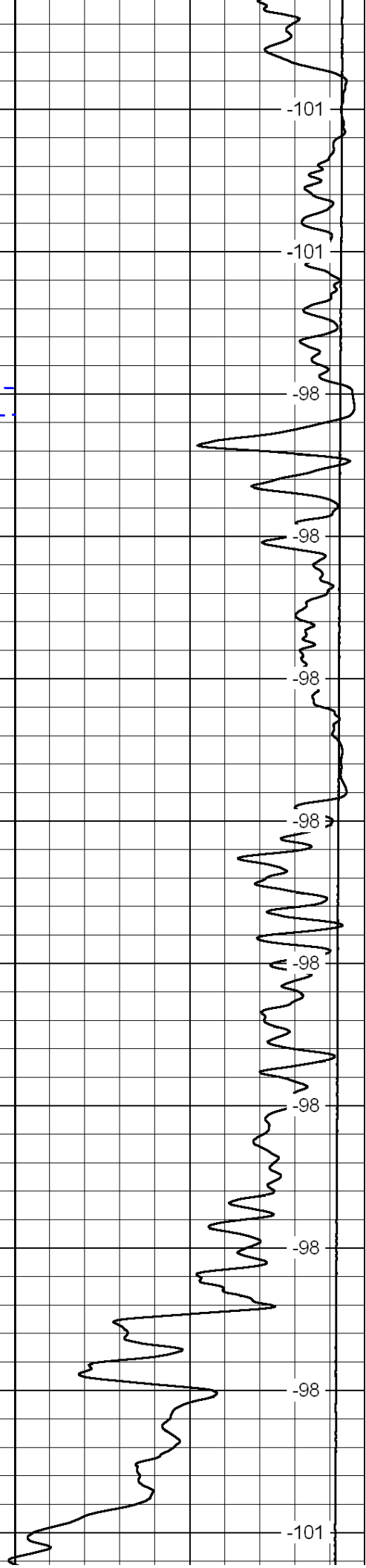
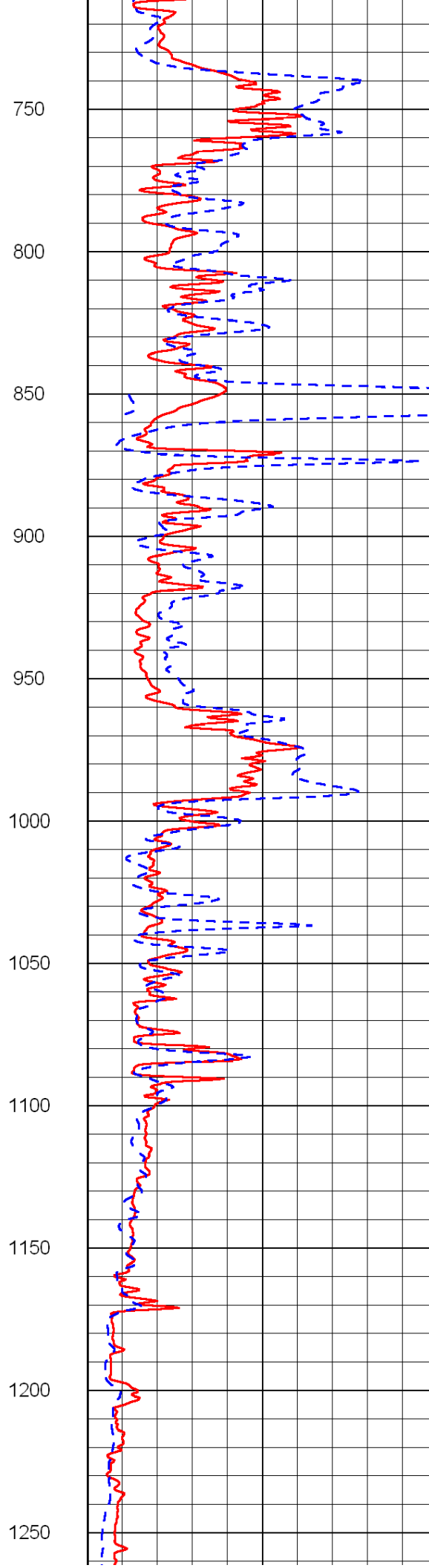
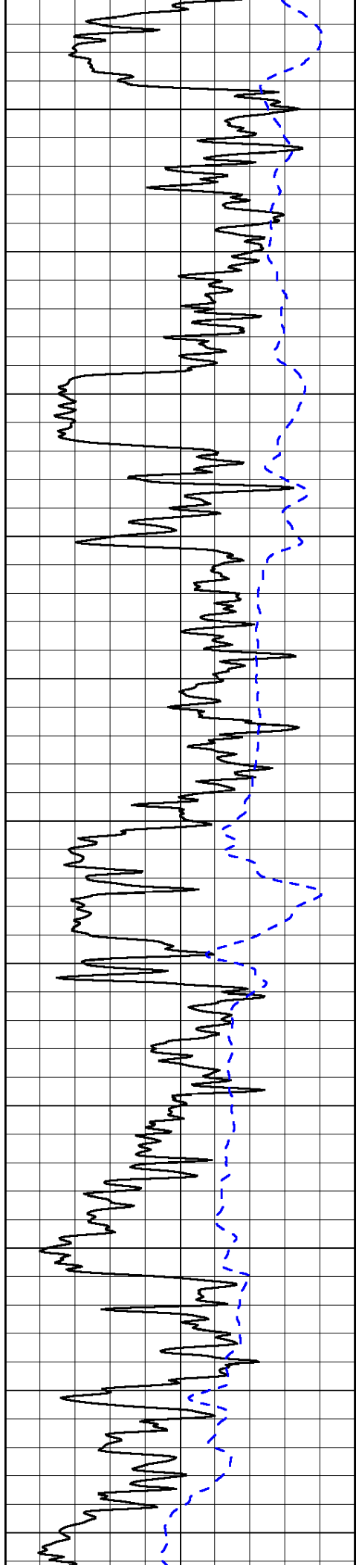
0	Shallow Resistivity	50
0	Deep Resistivity	50

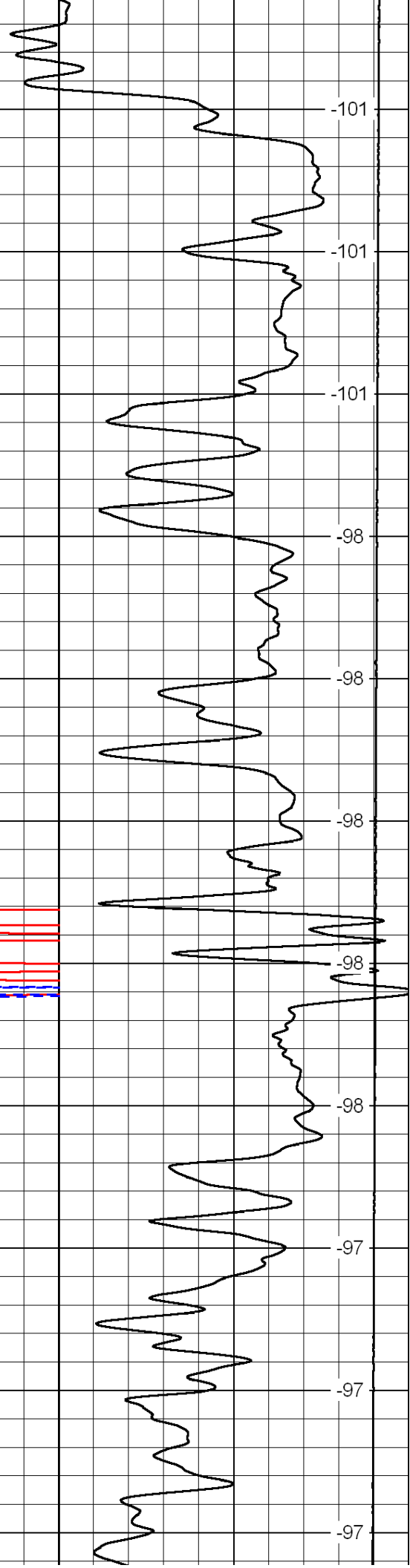
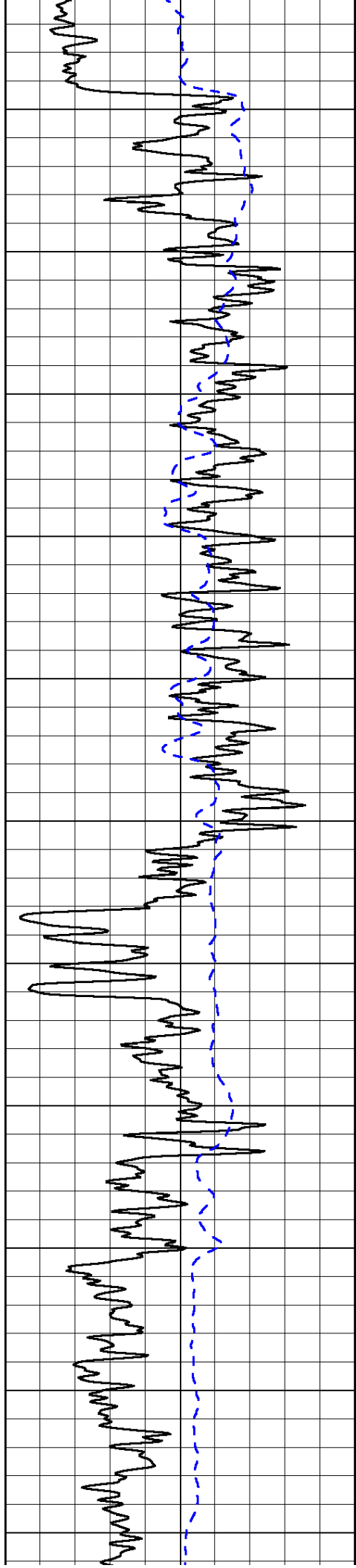
LSPD

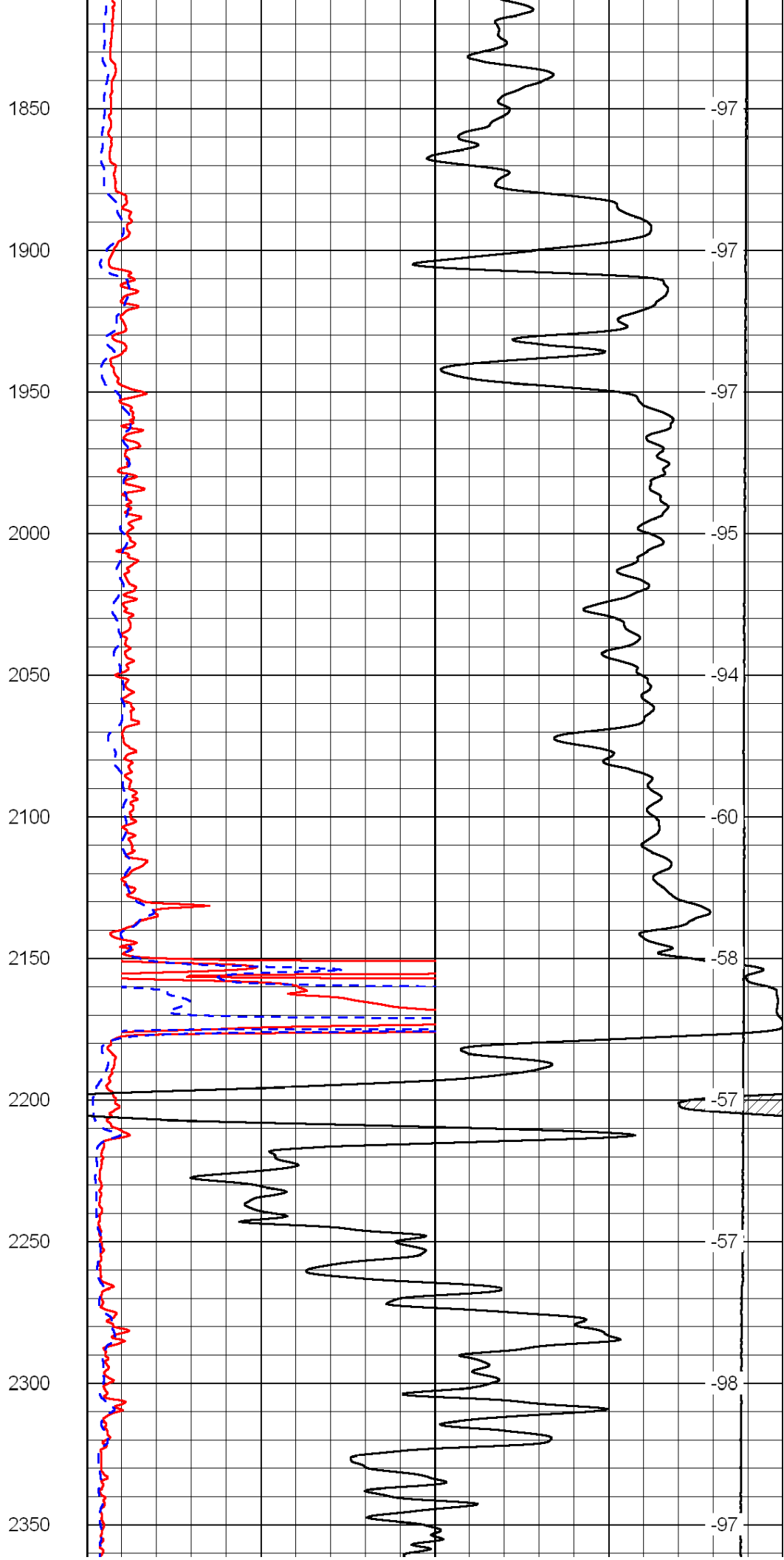
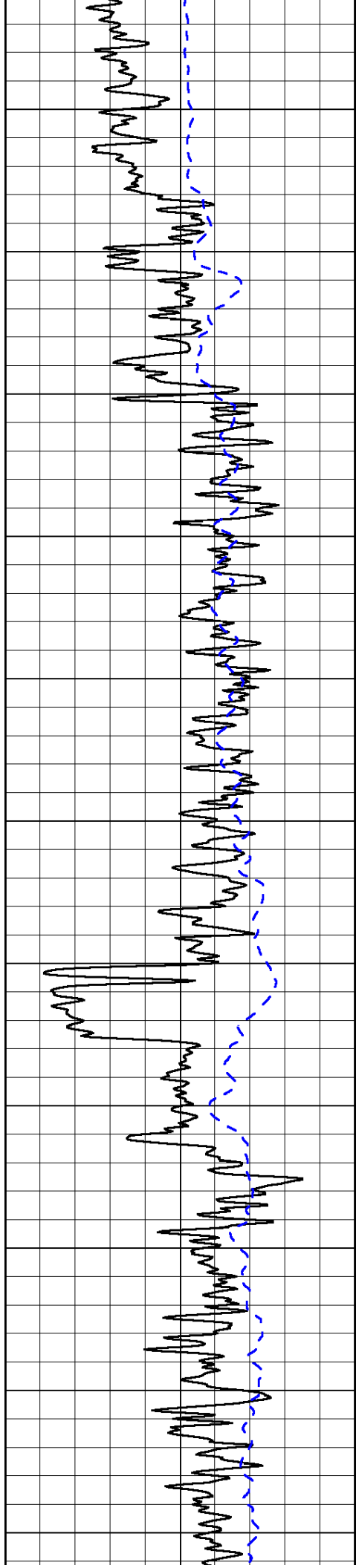
1000	Conductivity	0
15000	Line Tension	0

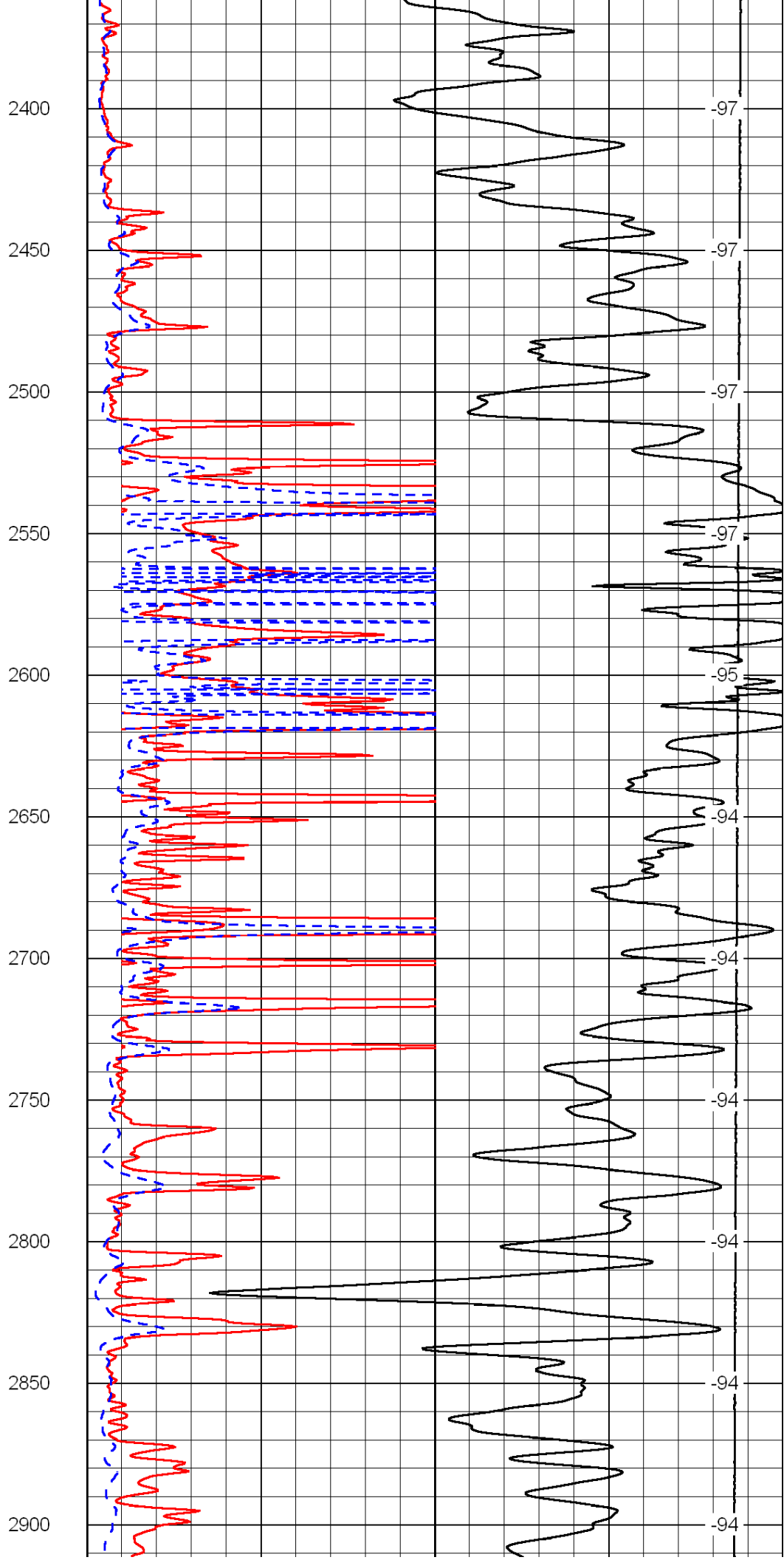
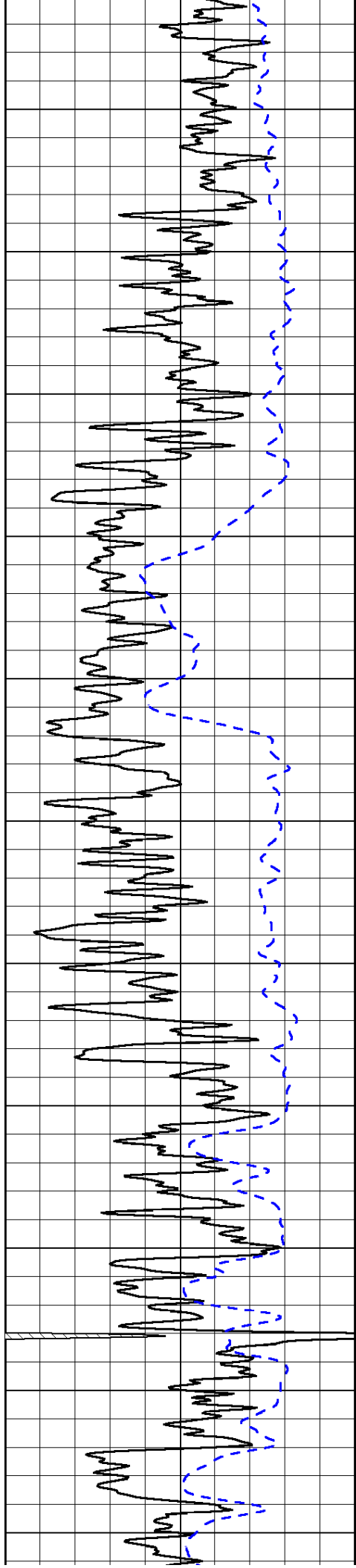
50	Shallow Resistivity	500
50	Deep Resistivity	500

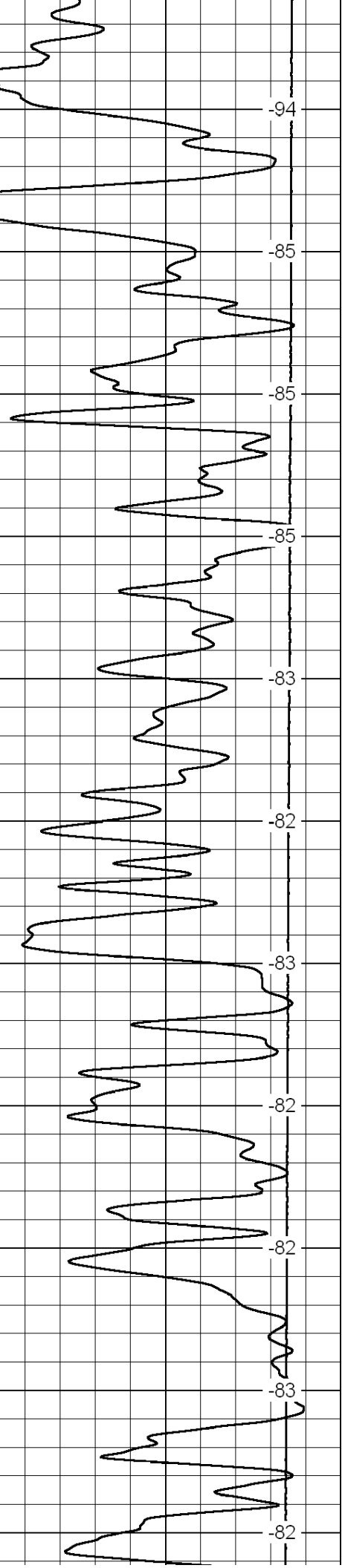
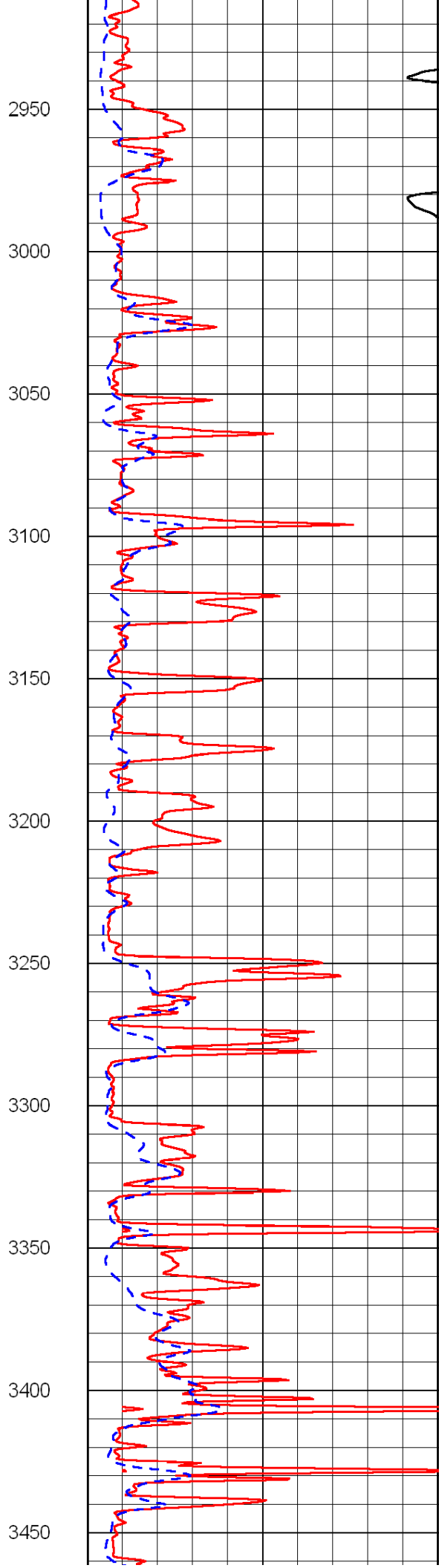
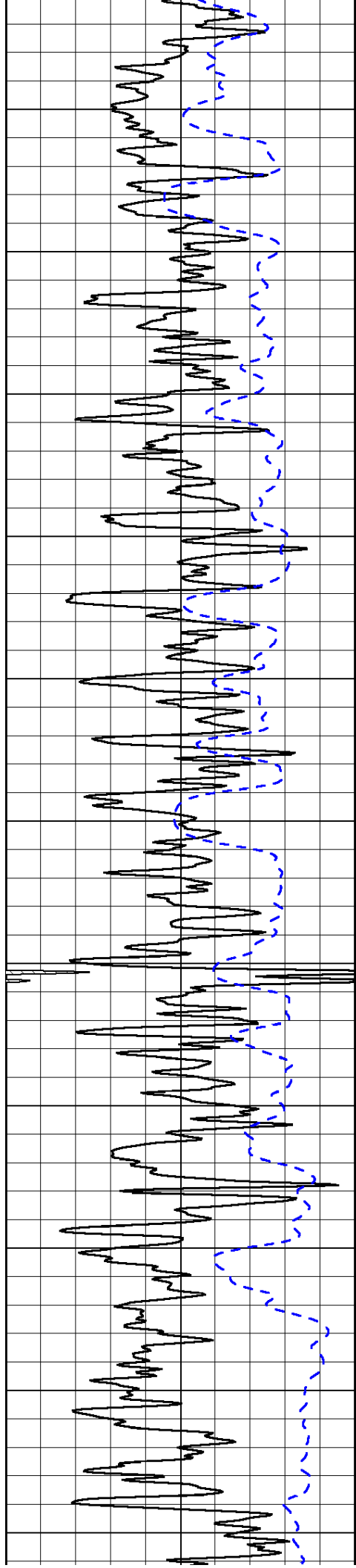


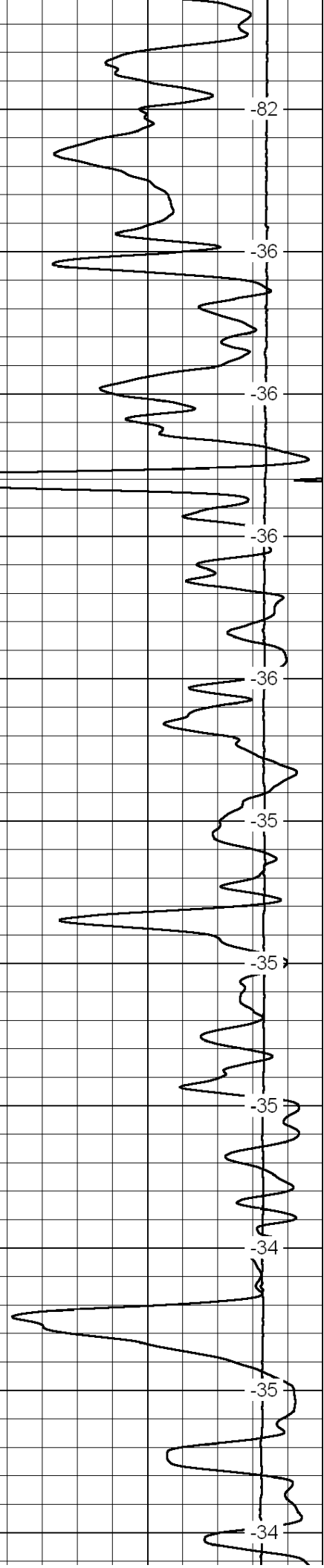
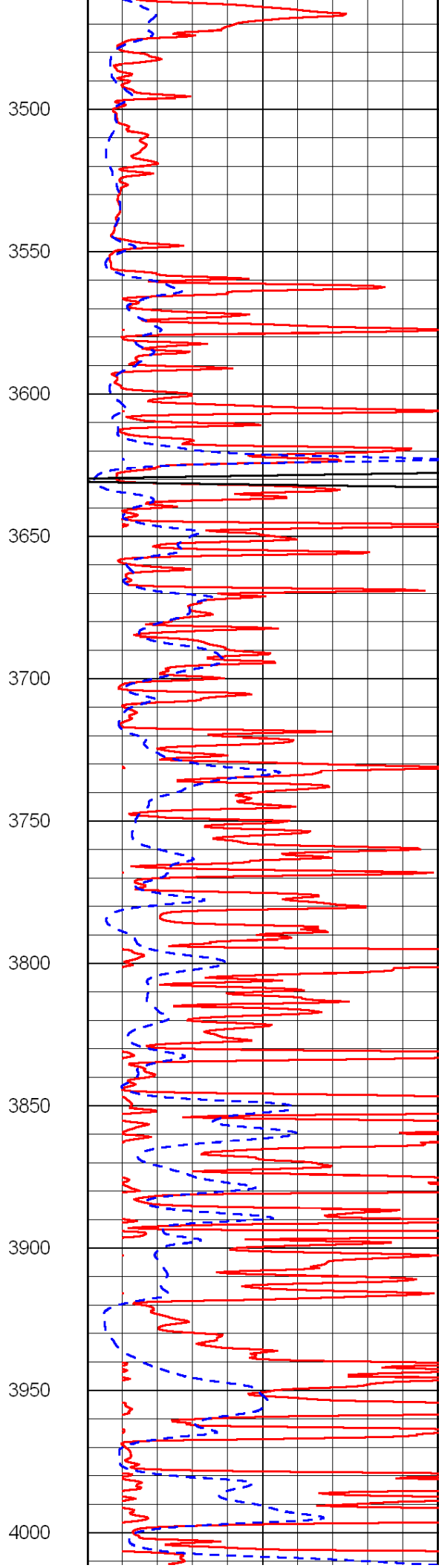
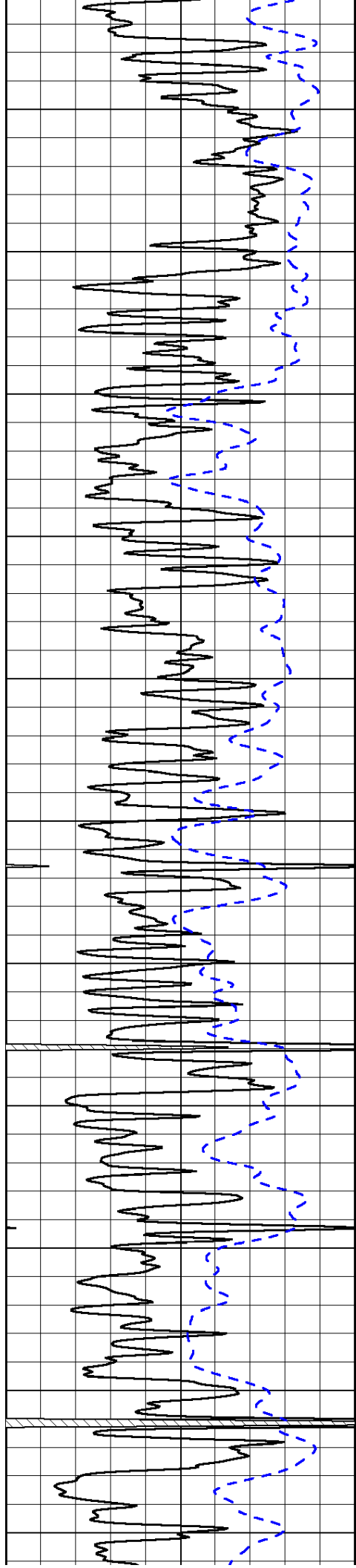


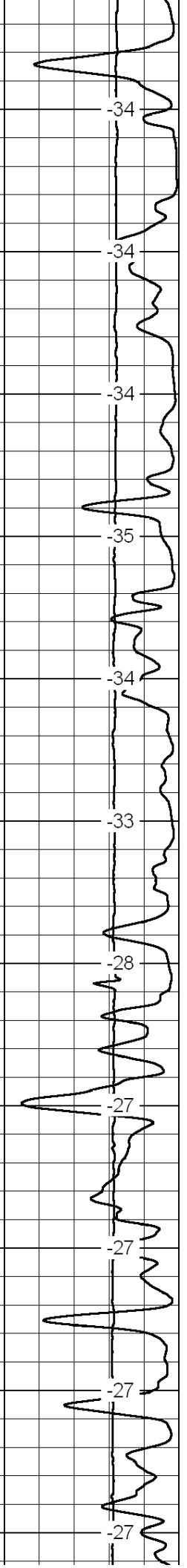
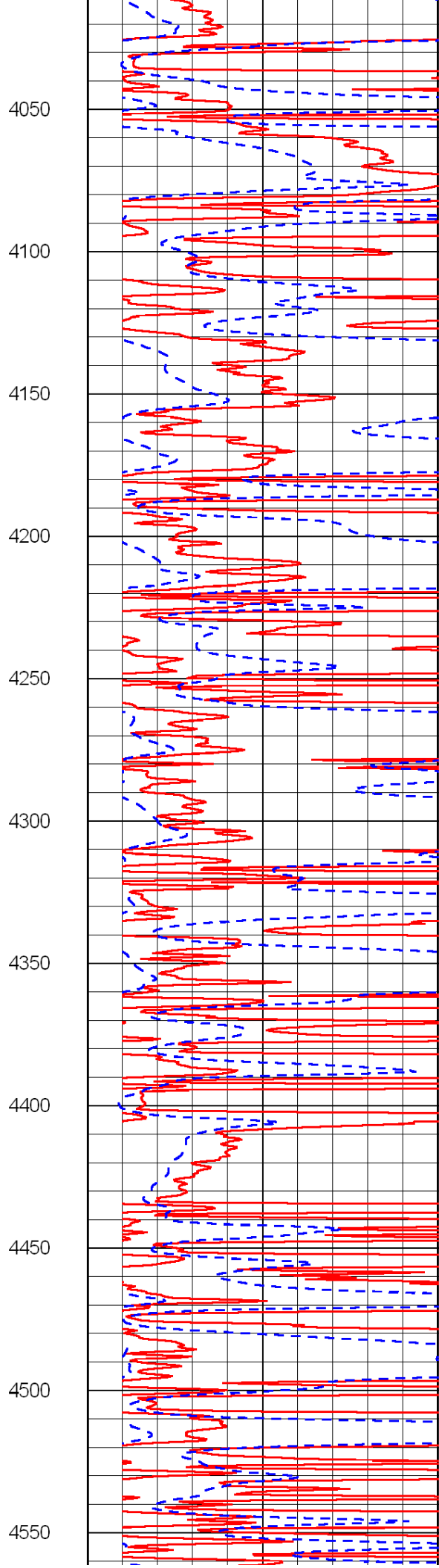
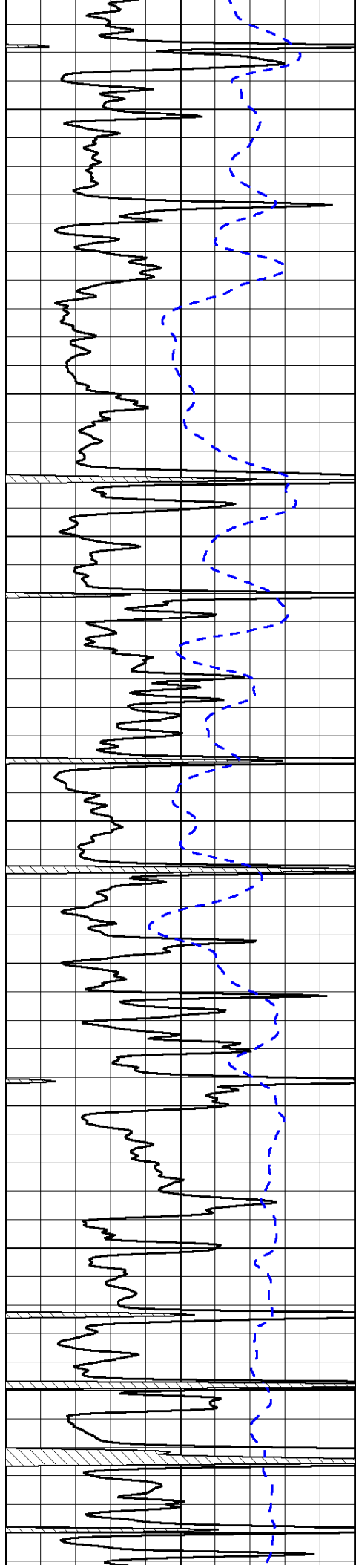


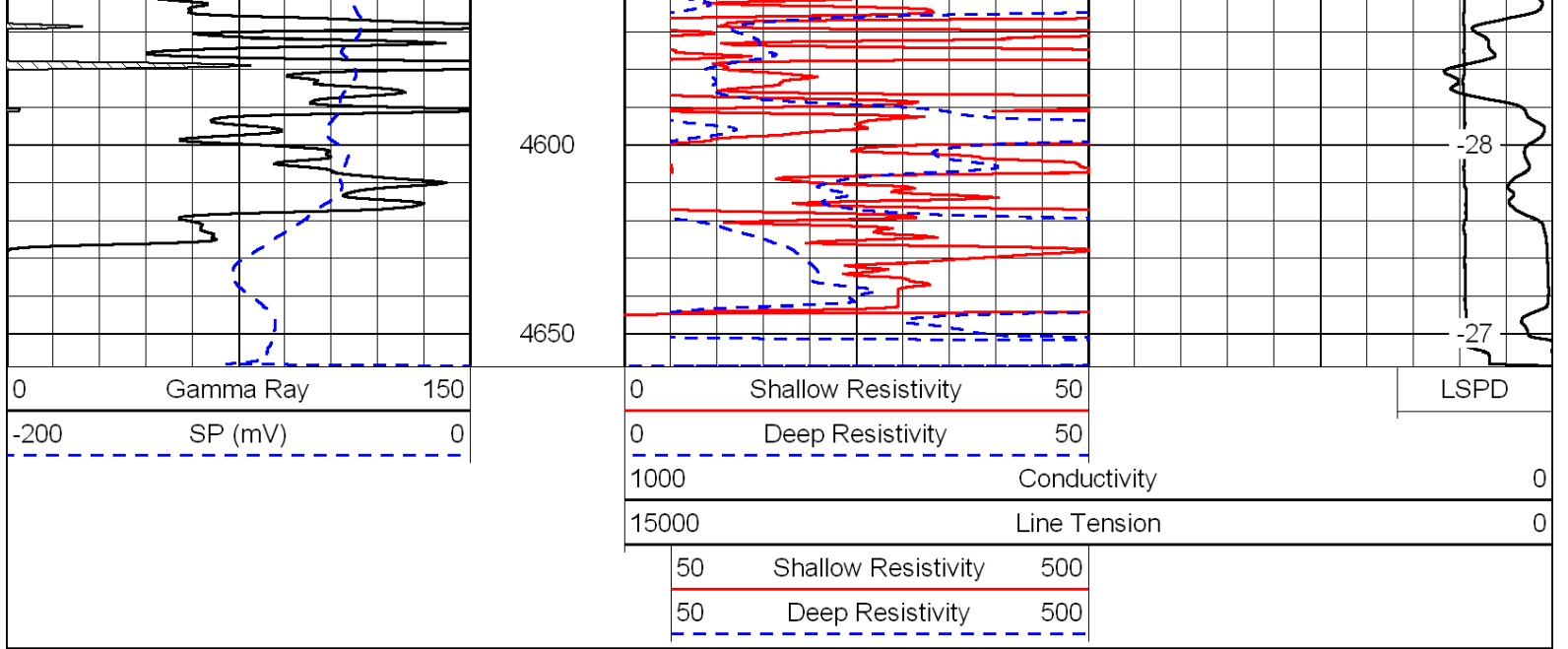




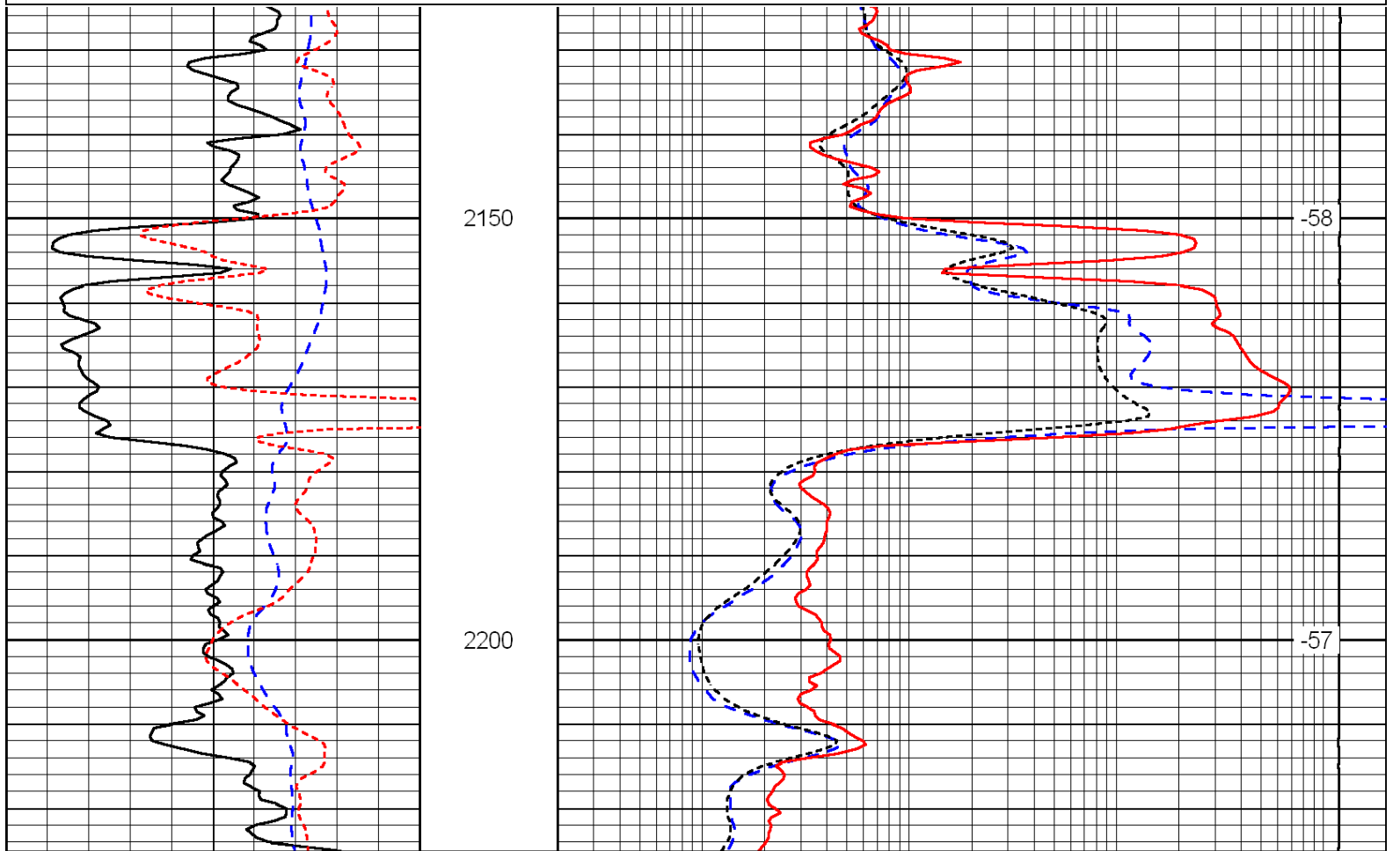
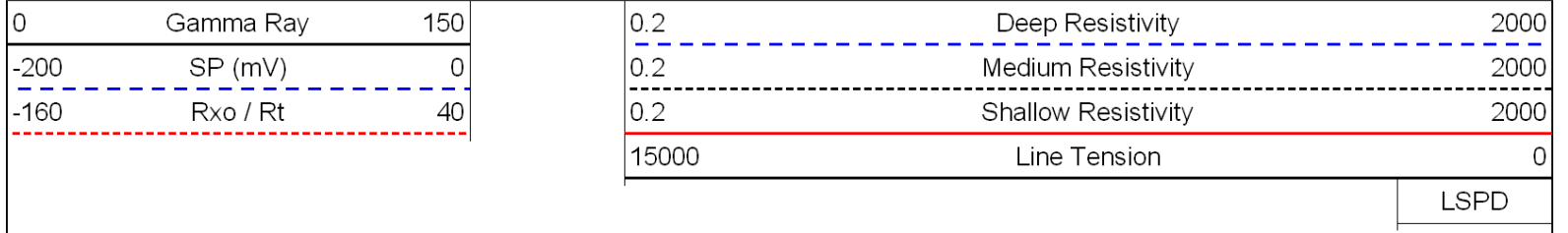








Database File: c:\warrior\data\larson_splitter-hilgenberg no. 1-35\larson.db
 Dataset Pathname: dil\larstck
 Presentation Format: dil
 Dataset Creation: Wed Oct 06 19:45:20 2010
 Charted by: Depth in Feet scaled 1:240



0	Gamma Ray	150
-200	SP (mV)	0
-160	Rxo / Rt	40

0.2	Deep Resistivity	2000
0.2	Medium Resistivity	2000
0.2	Shallow Resistivity	2000
15000	Line Tension	0

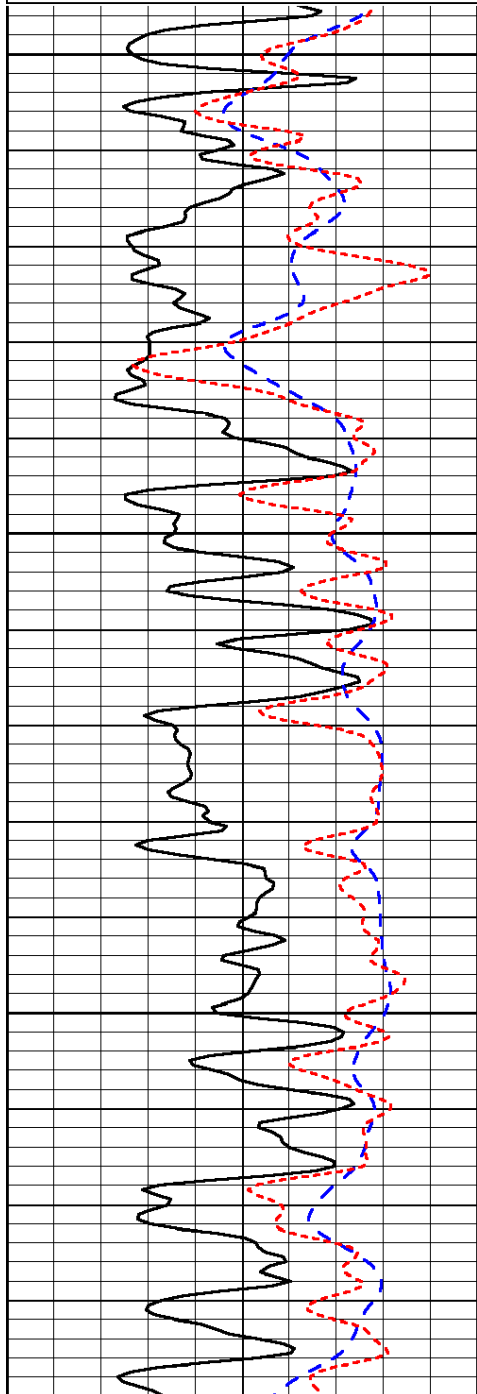
LSPD

Database File: c:\warrior\data\larson_splitter-hilgenberg no. 1-35\larson.db
 Dataset Pathname: dil\larstck
 Presentation Format: dil
 Dataset Creation: Wed Oct 06 19:45:20 2010
 Charted by: Depth in Feet scaled 1:240

0	Gamma Ray	150
-200	SP (mV)	0
-160	Rxo / Rt	40

0.2	Deep Resistivity	2000
0.2	Medium Resistivity	2000
0.2	Shallow Resistivity	2000
15000	Line Tension	0

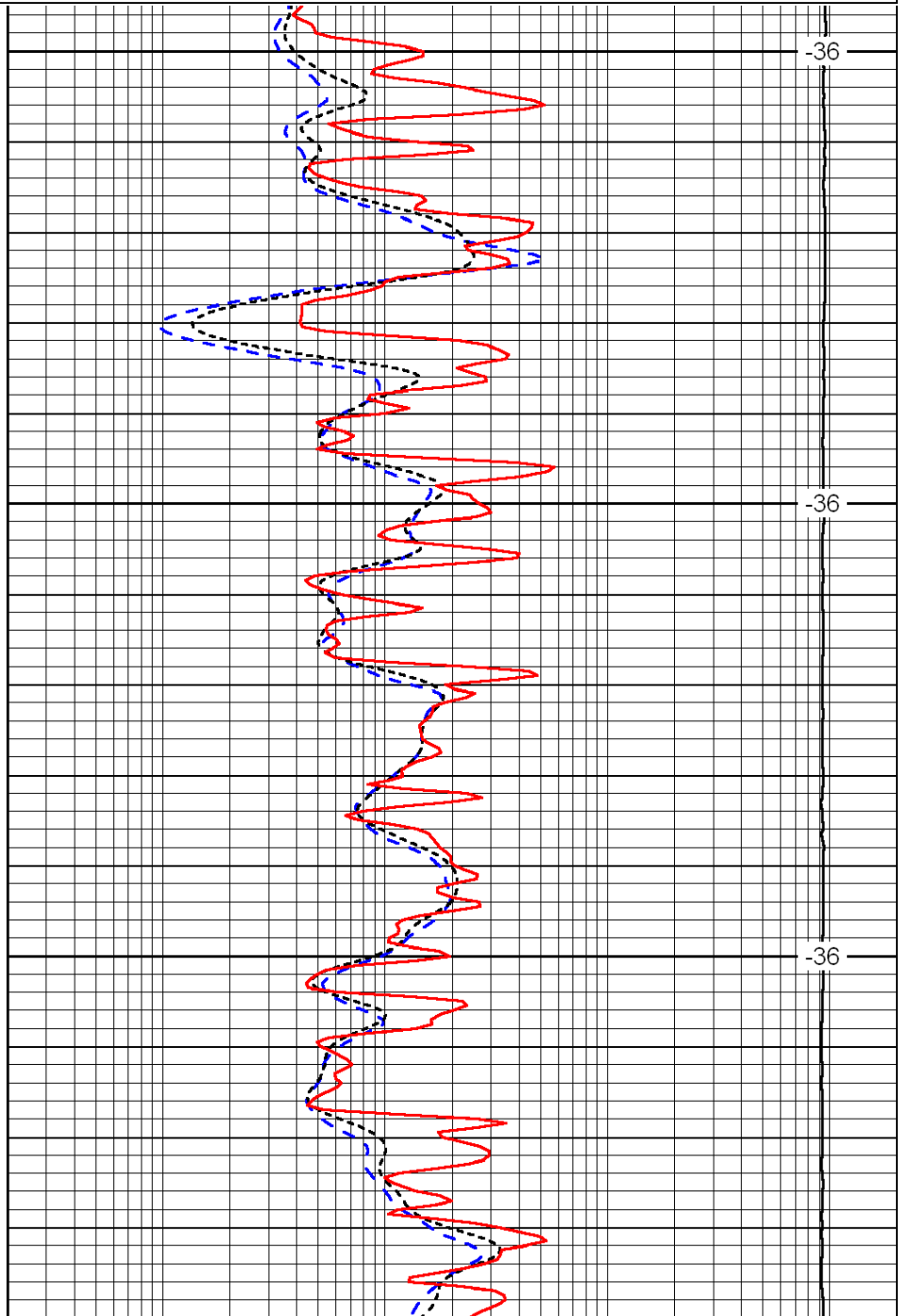
LSPD



3600

3650

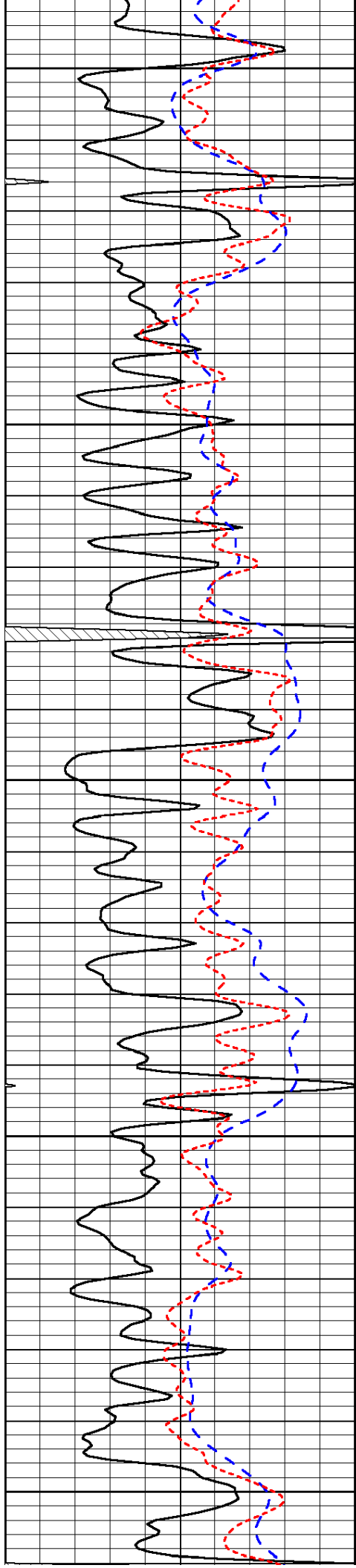
3700



-36

-36

-36



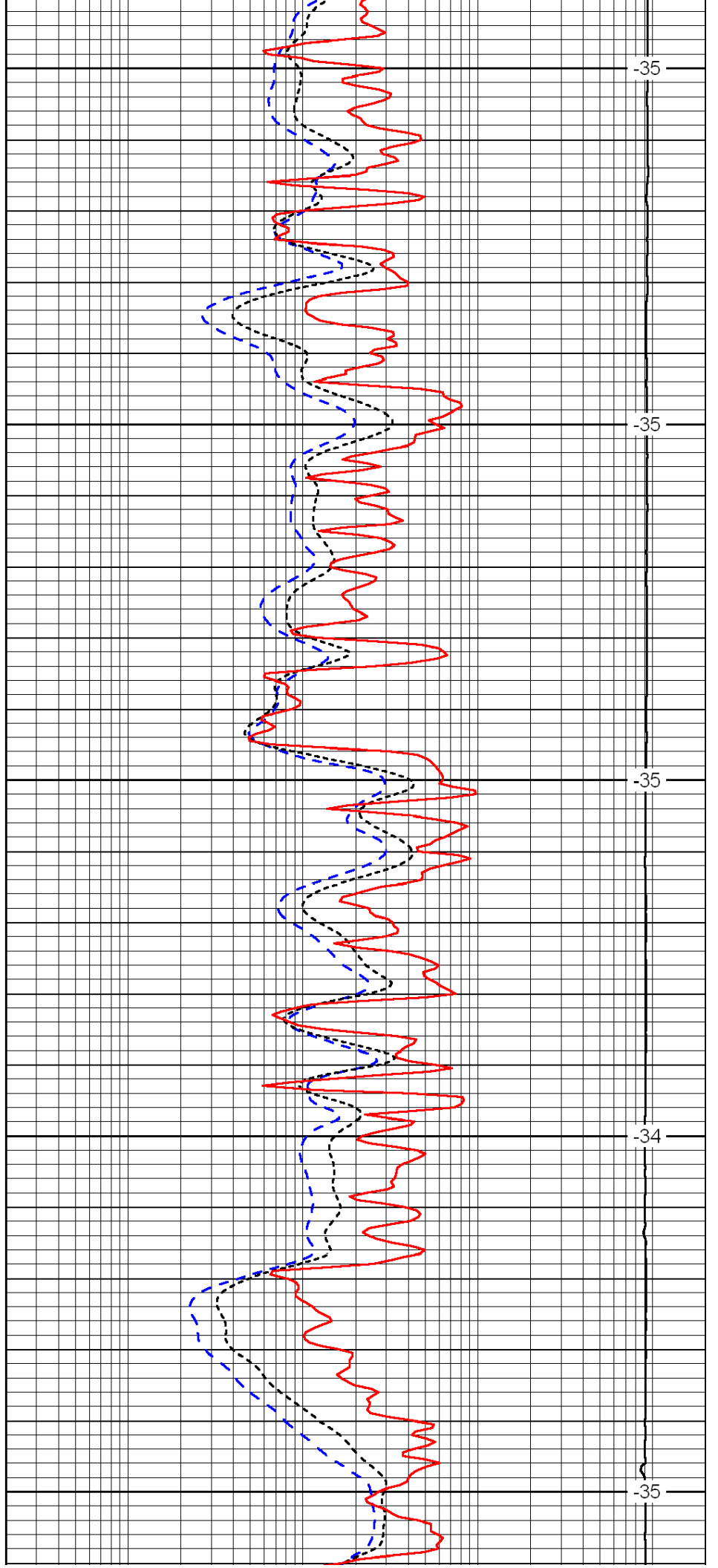
3750

3800

3850

3900

3950



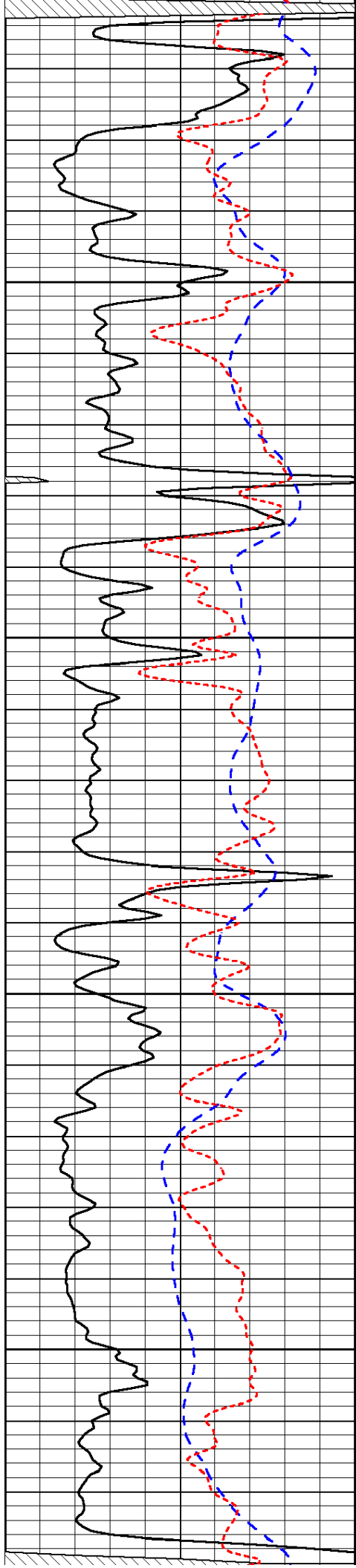
-35

-35

-35

-34

-35

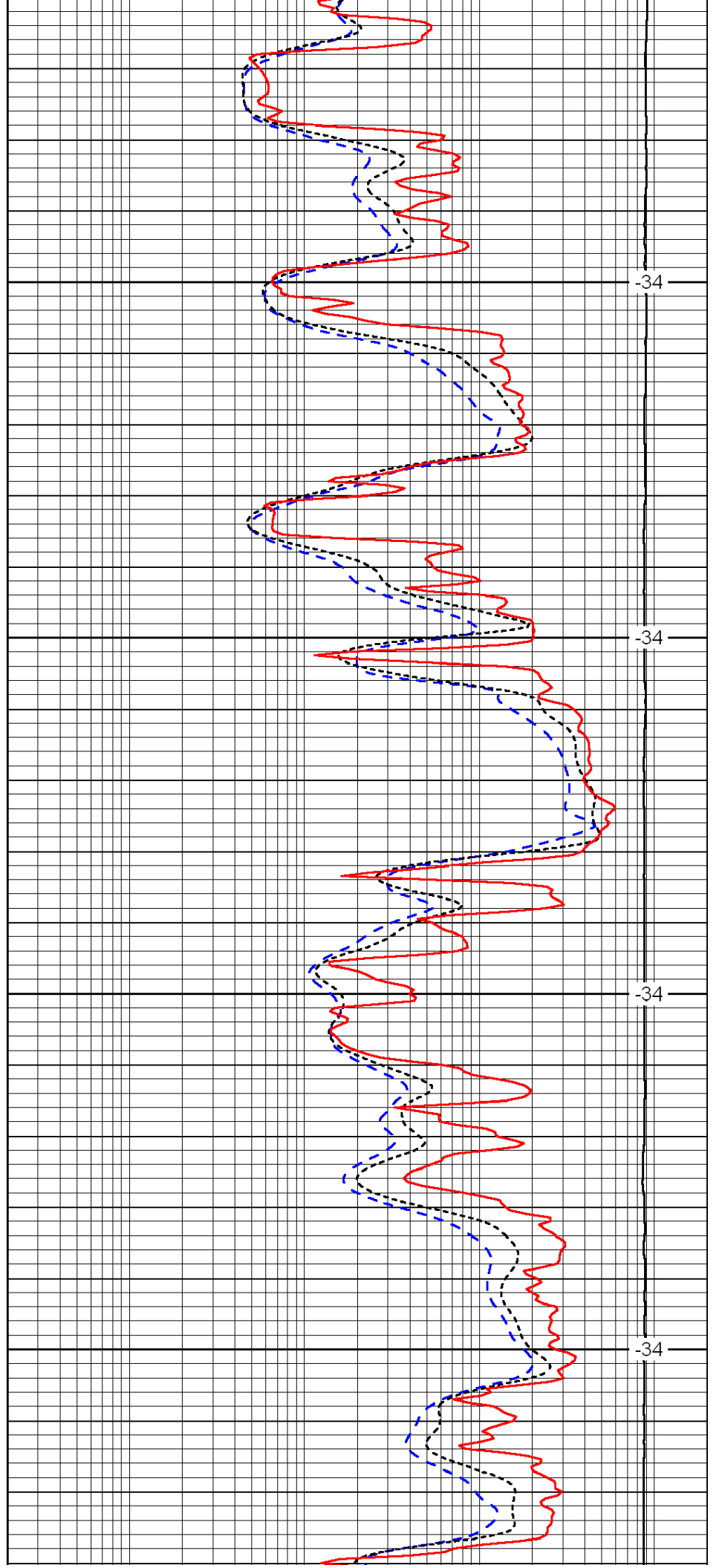


4000

4050

4100

4150

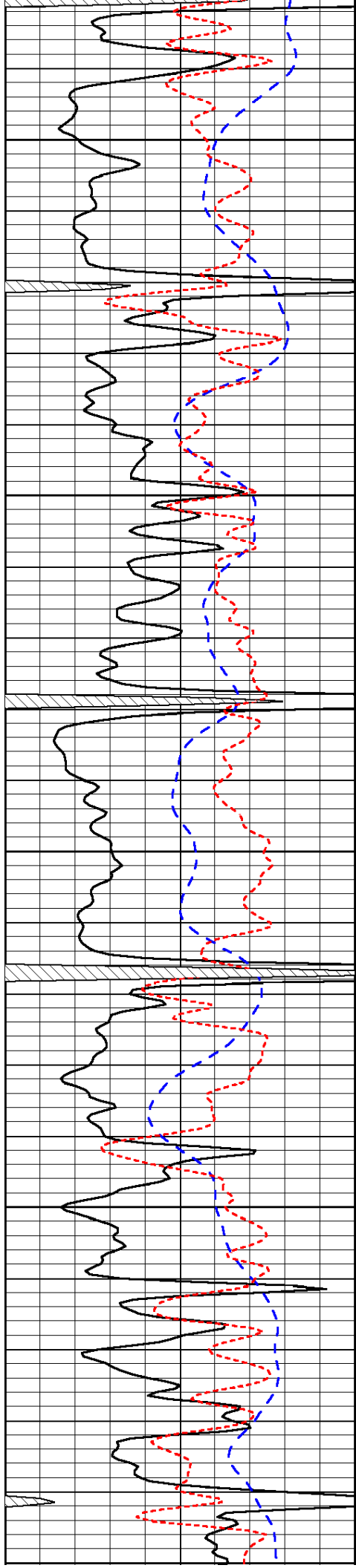


-34

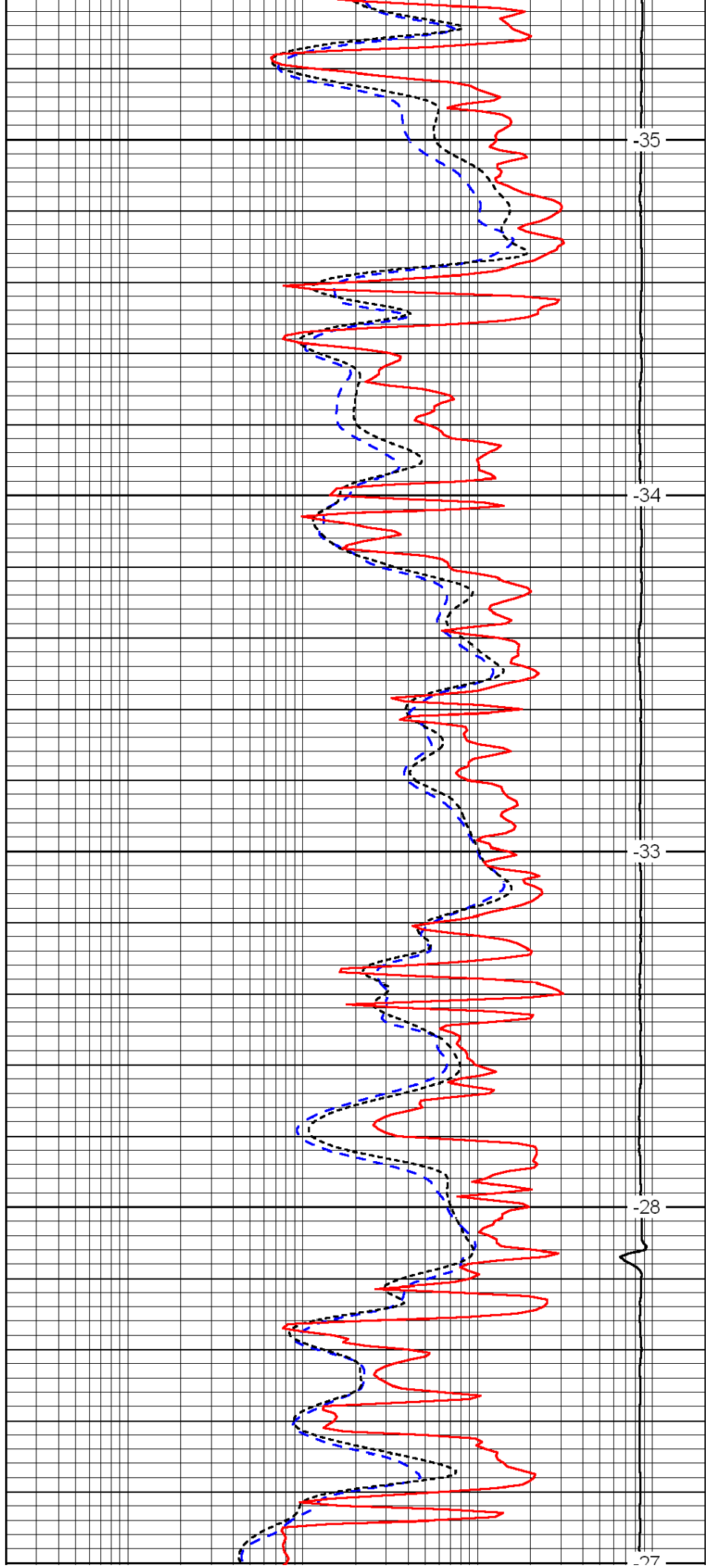
-34

-34

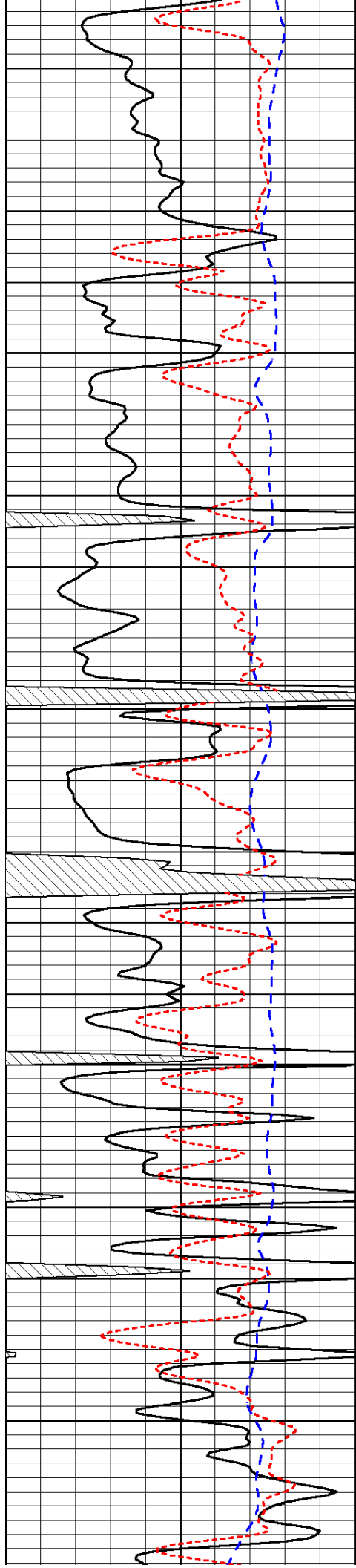
-34



4200
4250
4300
4350
4400



-35
-34
-33
-28
-27



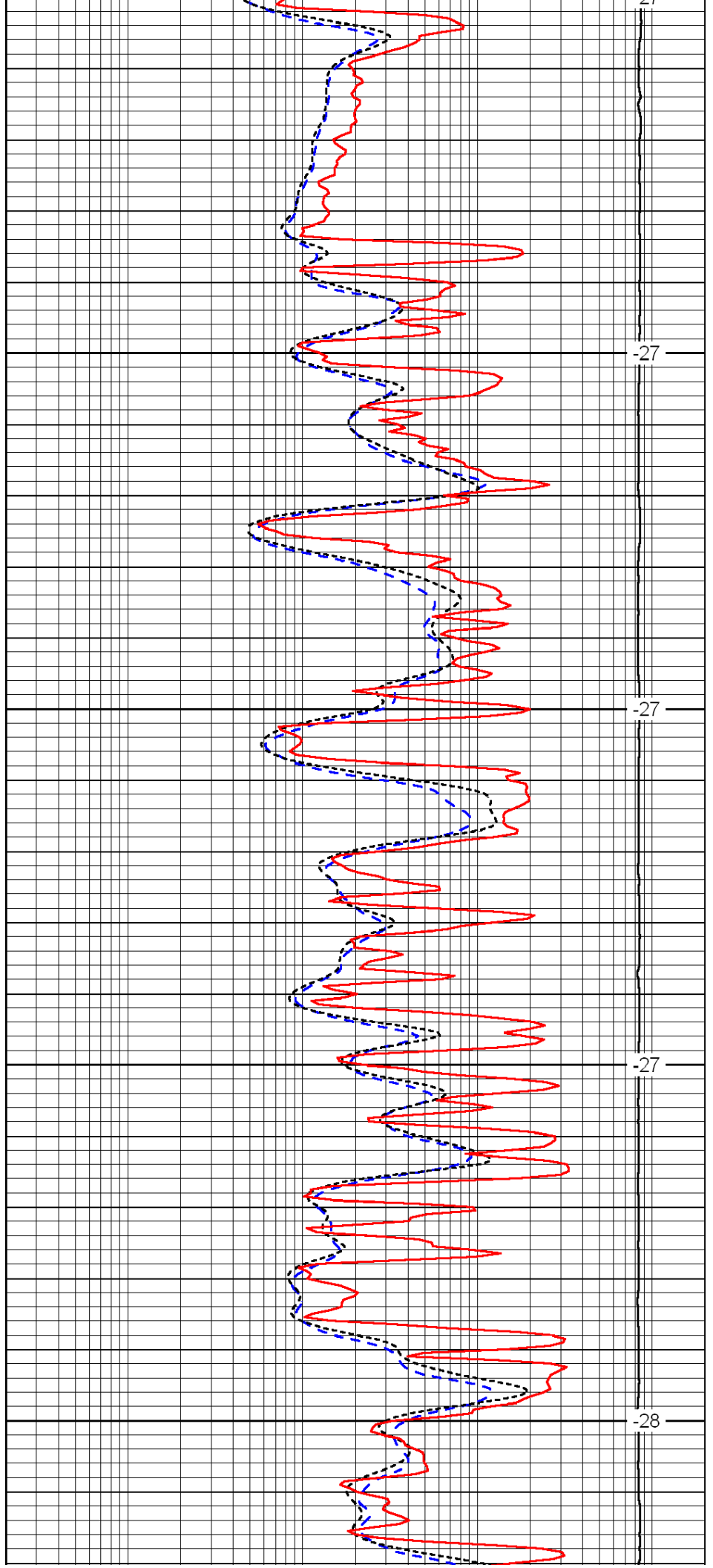
4400

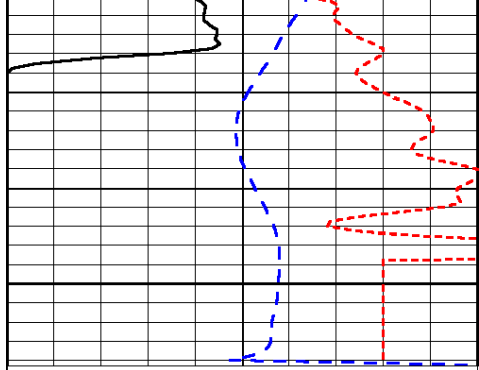
4450

4500

4550

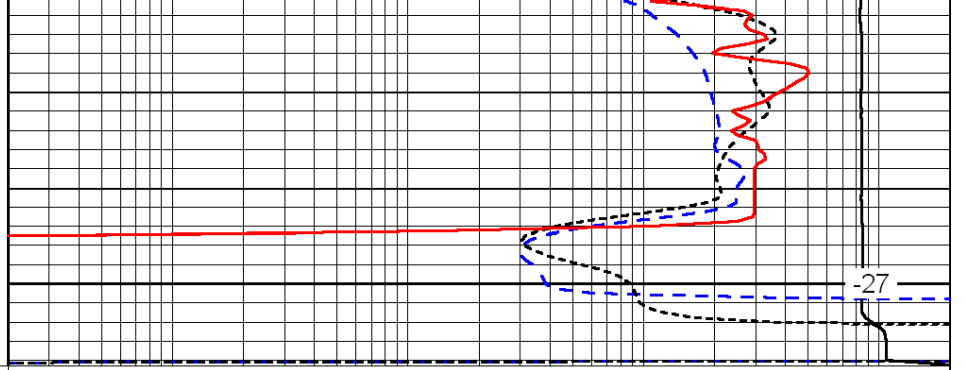
4600





0	Gamma Ray	150
-200	SP (mV)	0
-160	Rxo / Rt	40

4650



0.2	Deep Resistivity	2000
0.2	Medium Resistivity	2000
0.2	Shallow Resistivity	2000
15000	Line Tension	0

LSPD