



Pioneer Energy Services

Dual Induction Log

15-051-26,346-00-00

API No.

Company **TDI, Inc.**

Well **Dinges Family #1**

Field **Wildcat**

County **Elilis** State

Kansas

Location

1425' FNL & 2310' FWL

Other Services
CNL/CDL
MEL

Sec: **8** Twp: **15 S** Rge: **19 W**

Permanent Datum **Ground Level** Elevation **2027**

Log Measured From **Kelly Bushing** **10 Ft. Above Perm. Datum**

Elevation
K.B. 2037
D.F. 2027
G.L. 2027

Drilling Measured From **Kelly Bushing**

Date **9/09/2012**

Run Number **One**

Depth Driller **3704**

Depth Logger **3703**

Bottom Logged Interval **3702**

Top Log Interval **200**

Casing Driller **8.625 @ 213**

Casing Logger **212**

Bit Size **7.875**

Type Fluid in Hole **Chemical**

Salinity,ppm CL **4,200**

Density / Viscosity **9.2 59**

pH / Fluid Loss **10.5 7.8**

Source of Sample **Flowline**

Rm @ Meas. Temp **.70 @ 75**

Rmf @ Meas. Temp **.53 @ 75**

Rmc @ Meas. Temp **.95 @ 75**

Source of Rmf / Rmc **Charts**

Rm @ BHT **.46 @ 115**

Operating Rig Time **4 Hours**

Max Rec. Temp. F **115**

Equipment Number **91**

Location **Hays**

Recorded By **K. Bange**

Witnessed By **Tom Denning**

Herb Deines

<<< Fold Here >>>

All interpretations are opinions based on inferences from electrical or other measurements and we cannot and do not guarantee the accuracy or correctness of any interpretation, and we shall not, except in the case of gross or willful negligence on our part, be liable or responsible for any loss, costs, damages, or expenses incurred or sustained by anyone resulting from any interpretation made by any of our officers, agents or employees. These interpretations are also subject to our general terms and conditions set out in our current Price Schedule.

Comments

Thank you for using Pioneer Energy Services
www.pioneerenergy.com
 785 625 3858
 Antonino, 3 W,
 1 S, 1/2 W,
 S into

Database File: c:\warrior\data\tdi_dinges family #1\tdi090912hd.db
 Dataset Pathname: dil\tdistack
 Presentation Format: dil2in
 Dataset Creation: Mon Sep 10 02:11:02 2012
 Charted by: Depth in Feet scaled 1:600

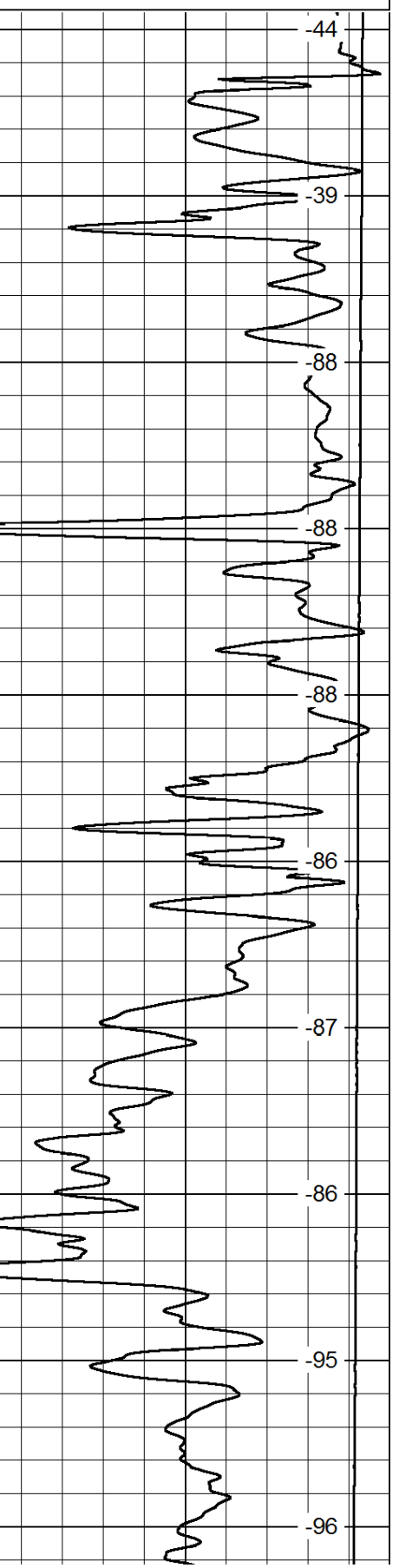
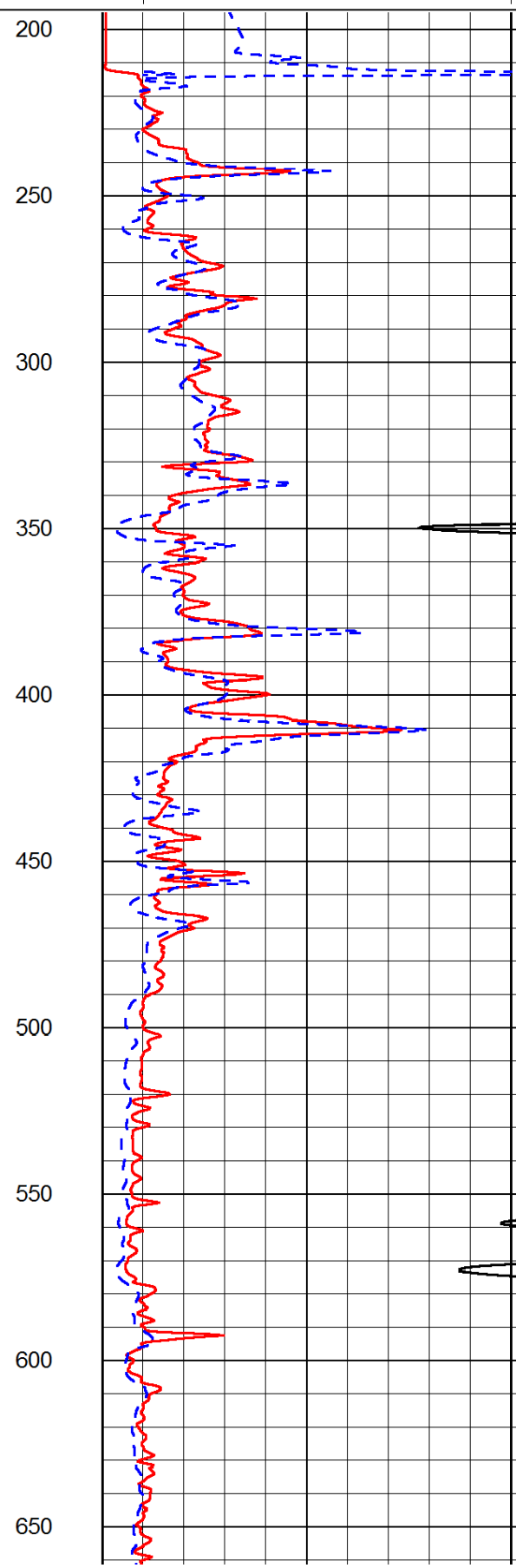
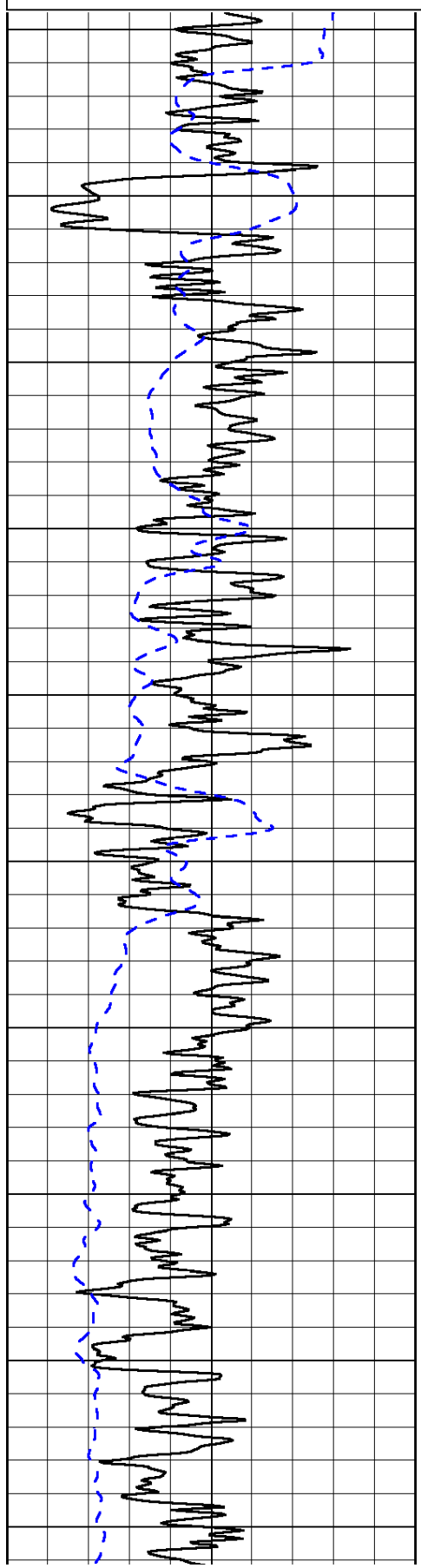
0	Gamma Ray	150
-200	SP (mV)	0

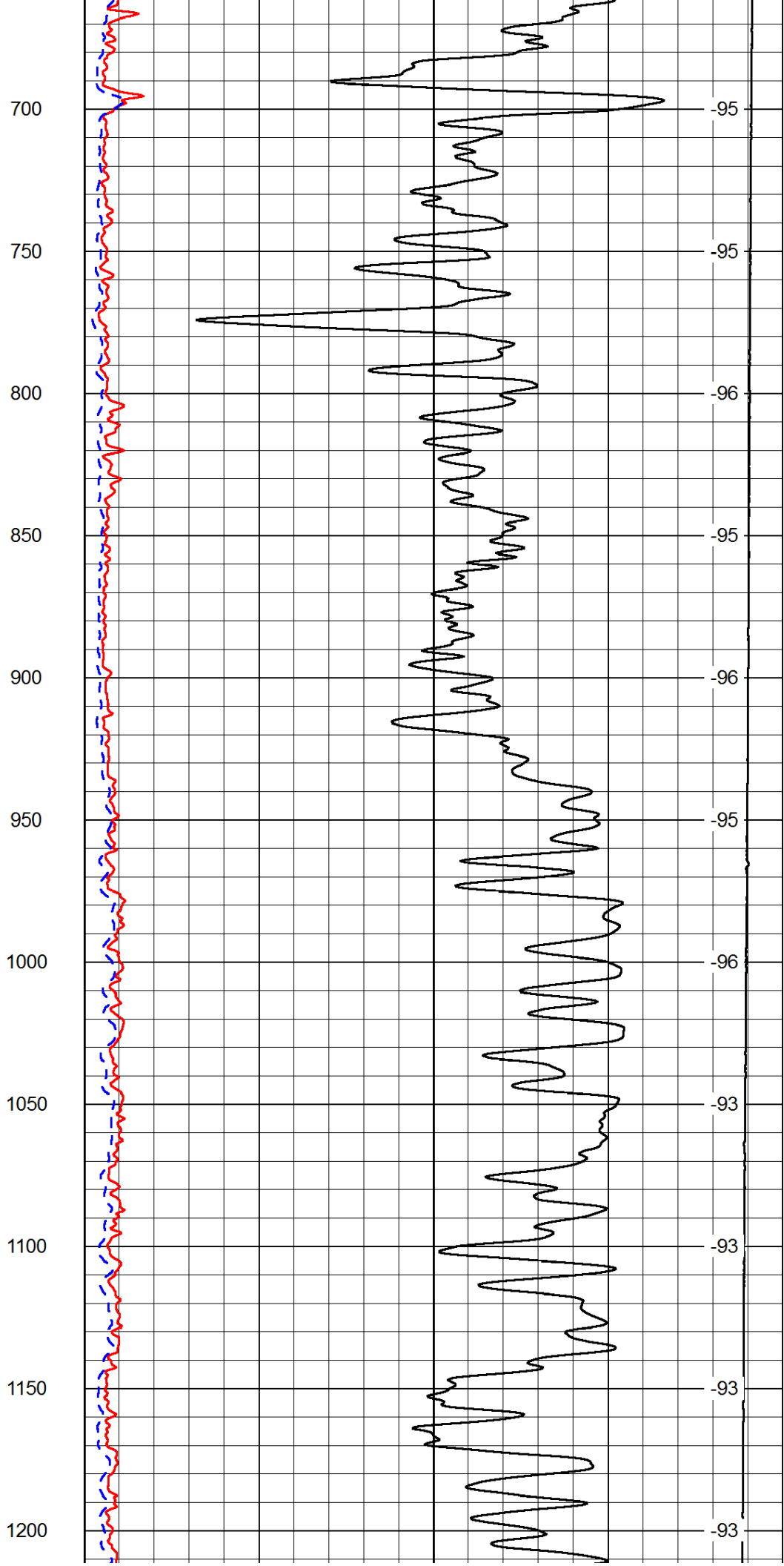
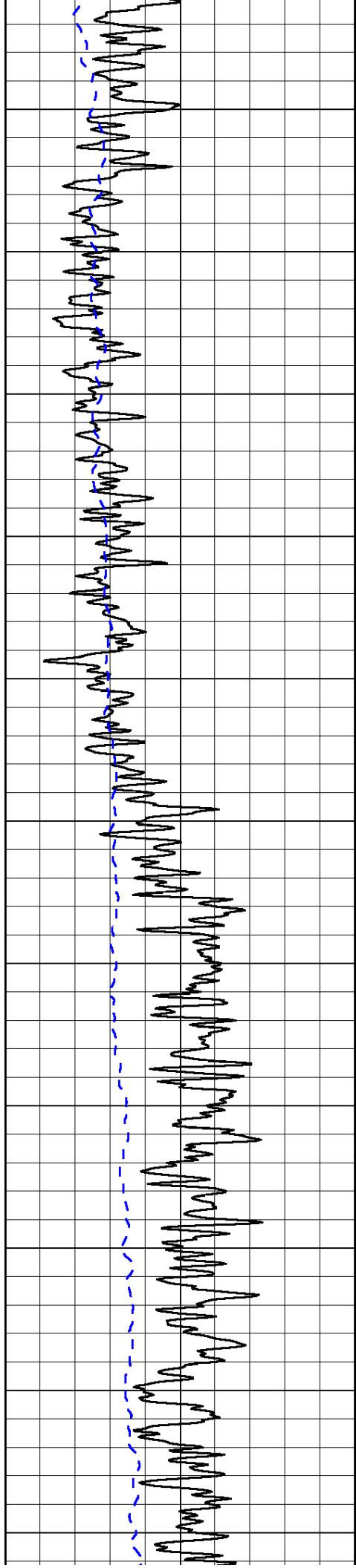
0	Shallow Resistivity	50
0	Deep Resistivity	50

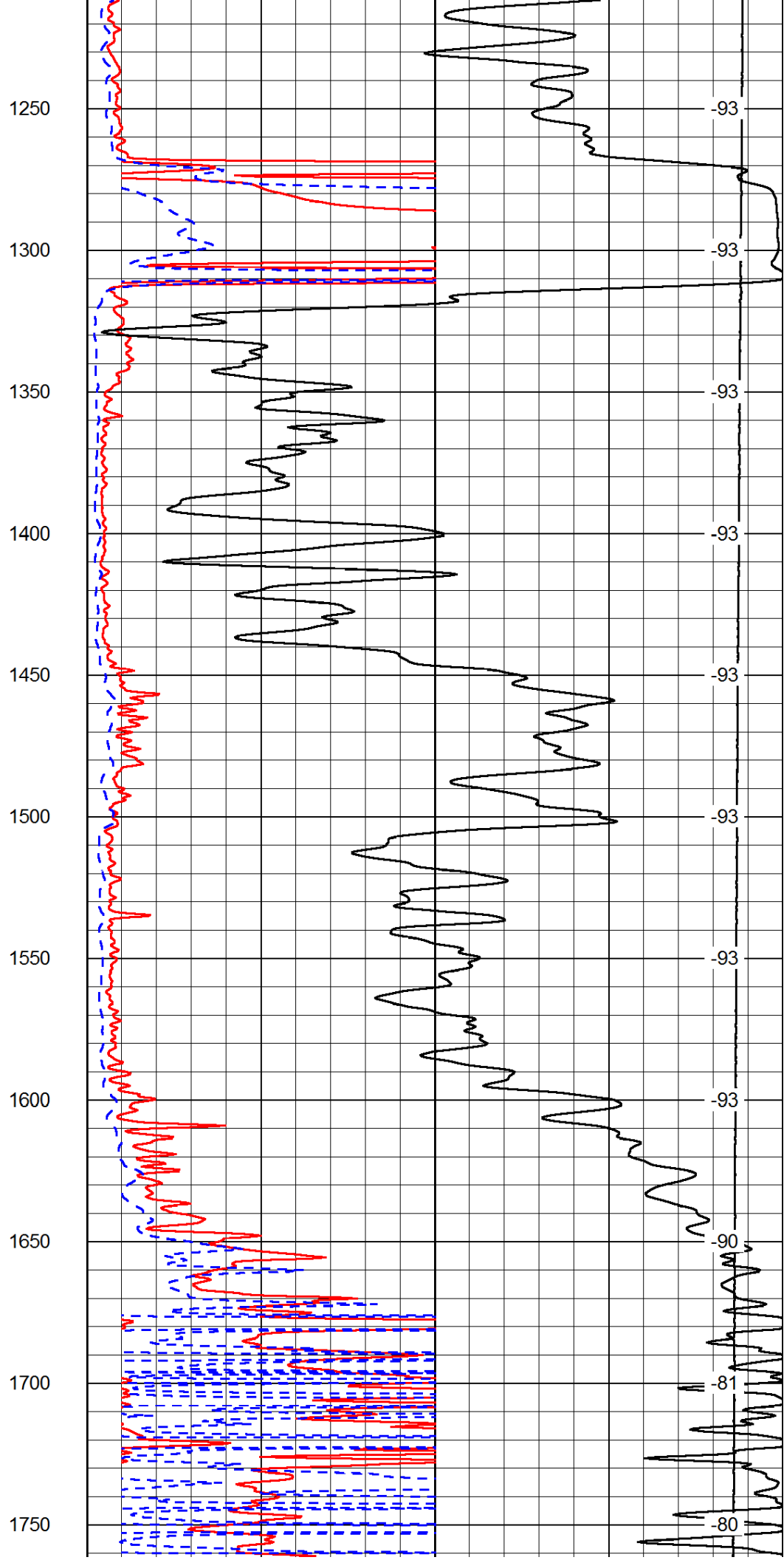
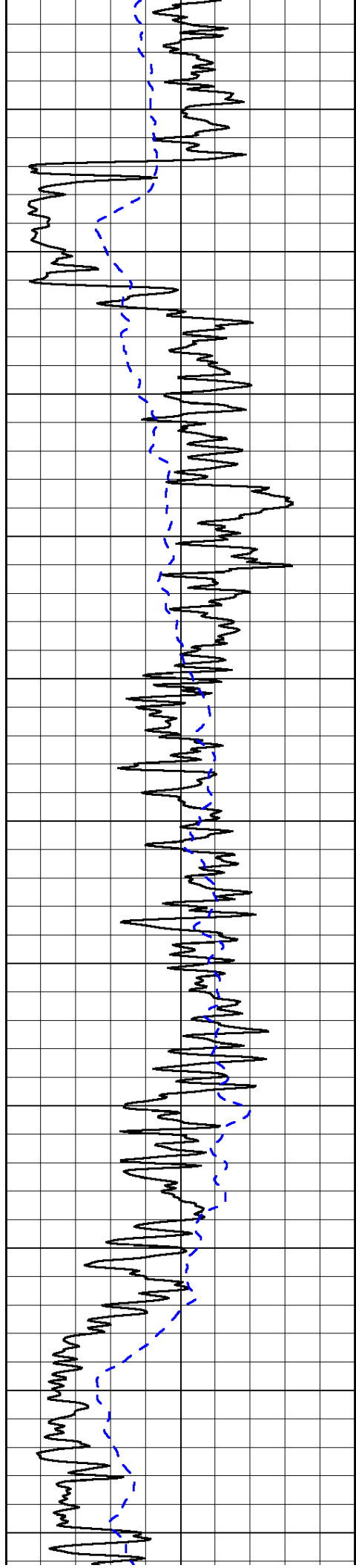
LSPD

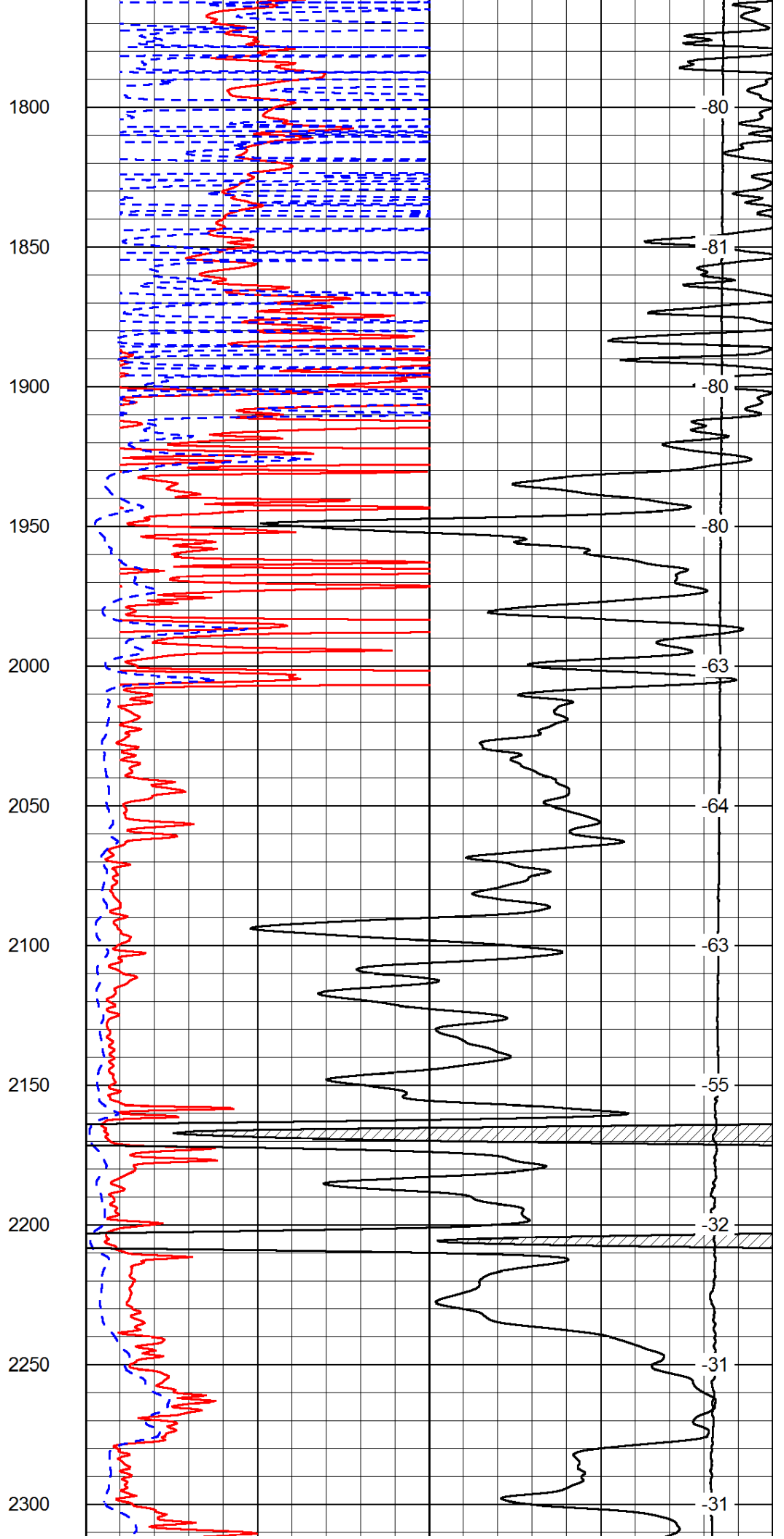
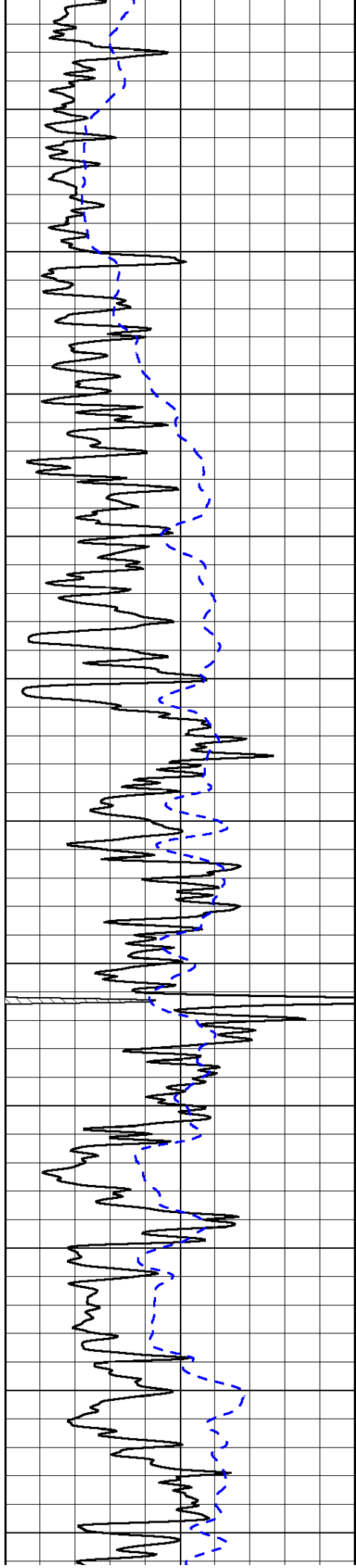
1000	Conductivity	0
15000	Line Tension	0

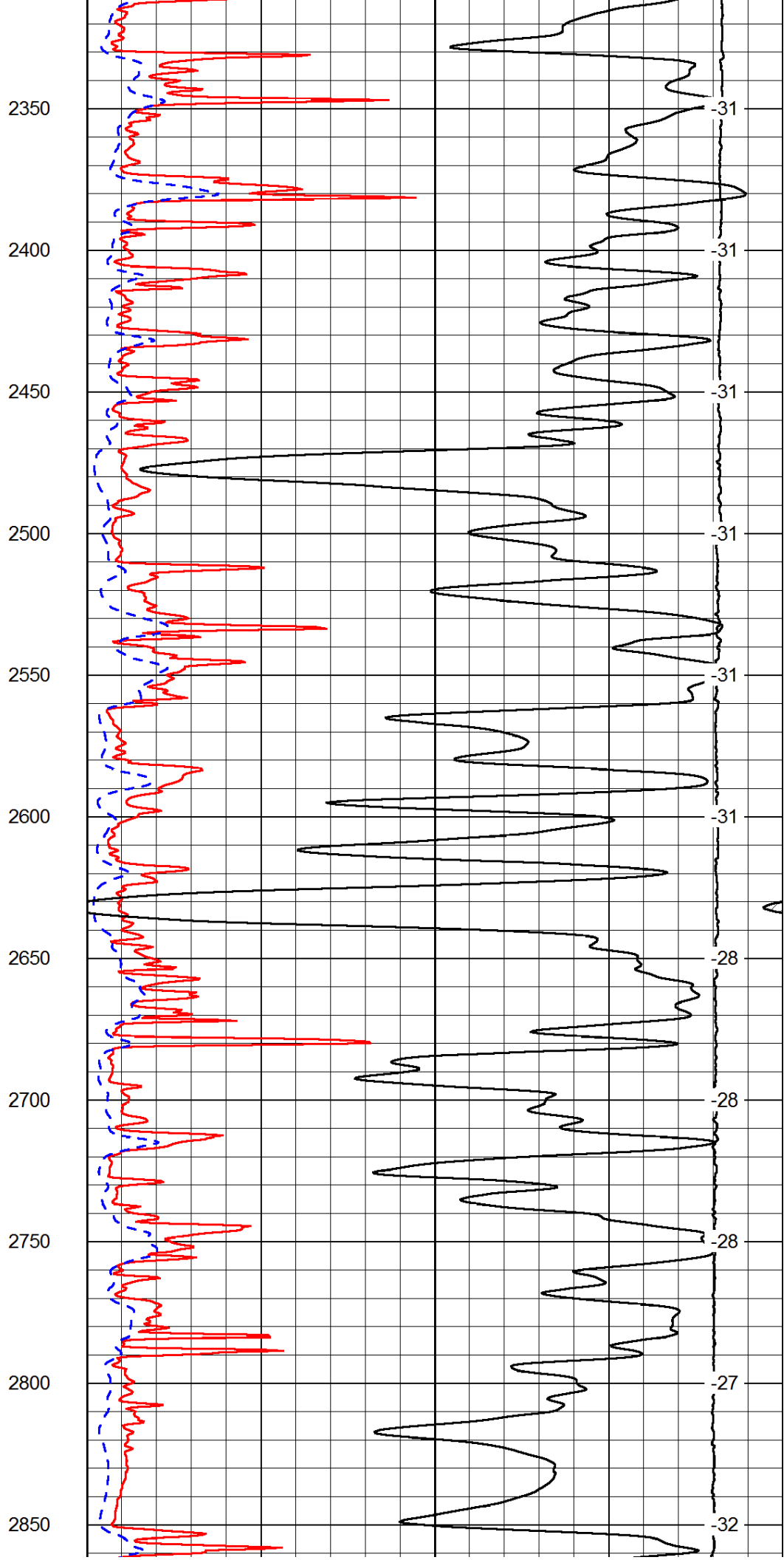
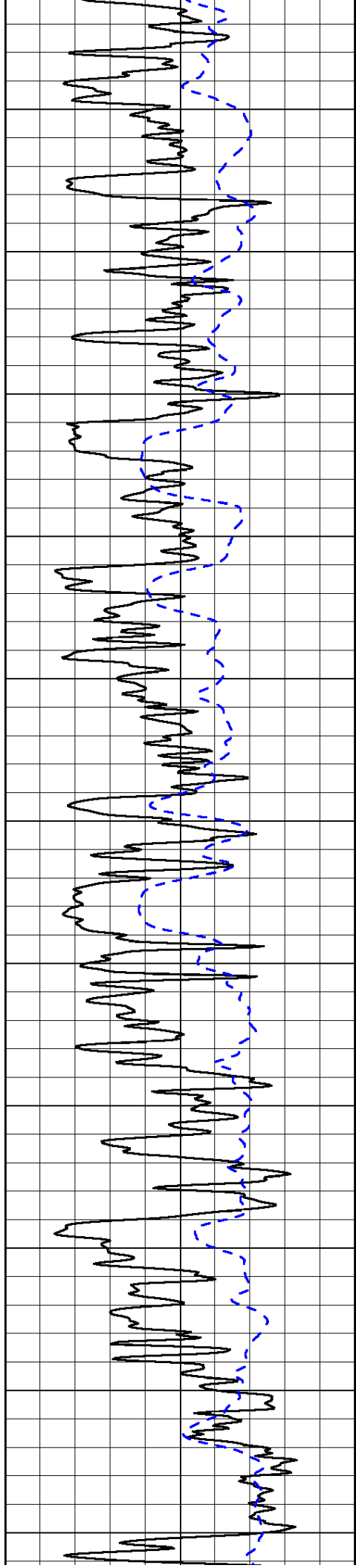
50	Shallow Resistivity	500
50	Deep Resistivity	500

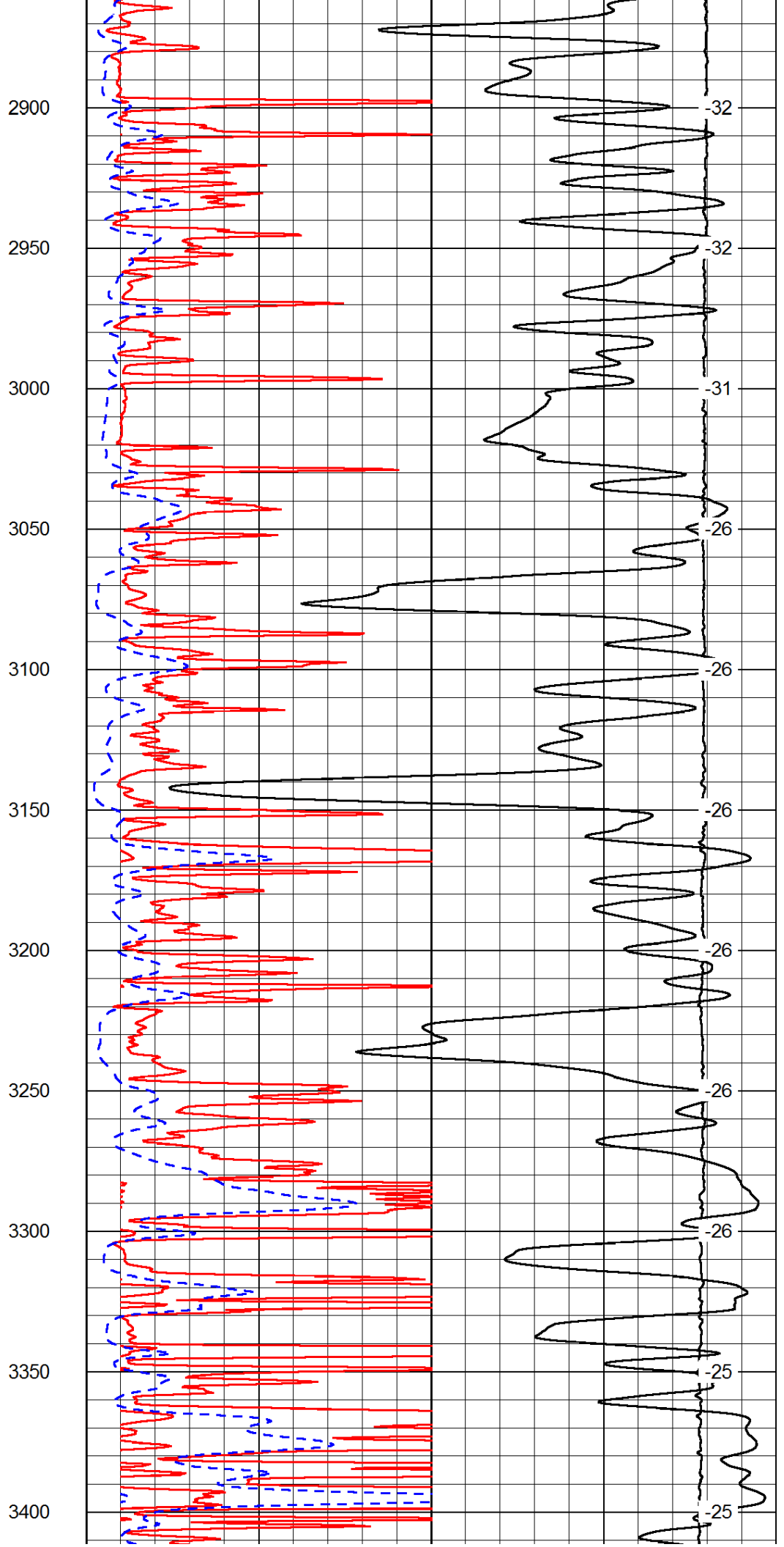
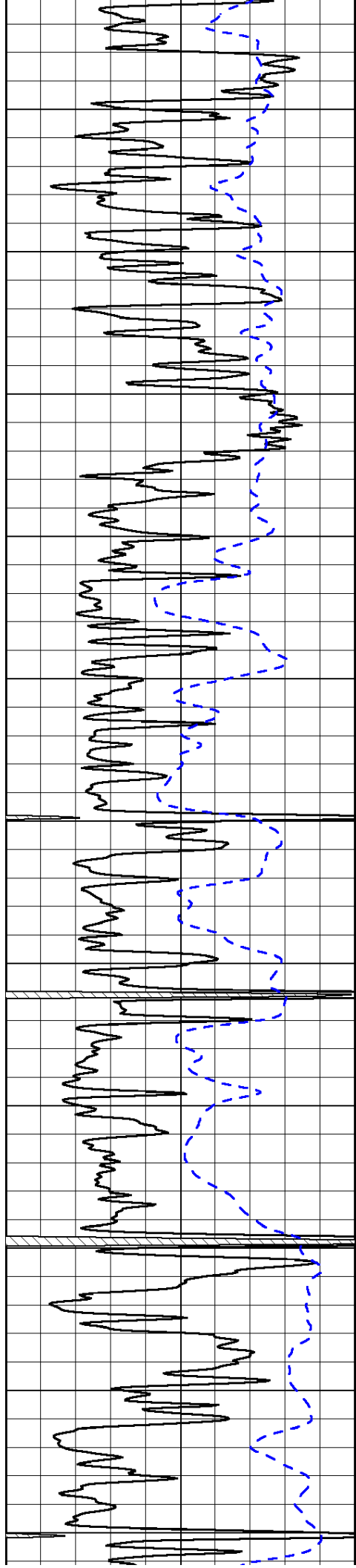


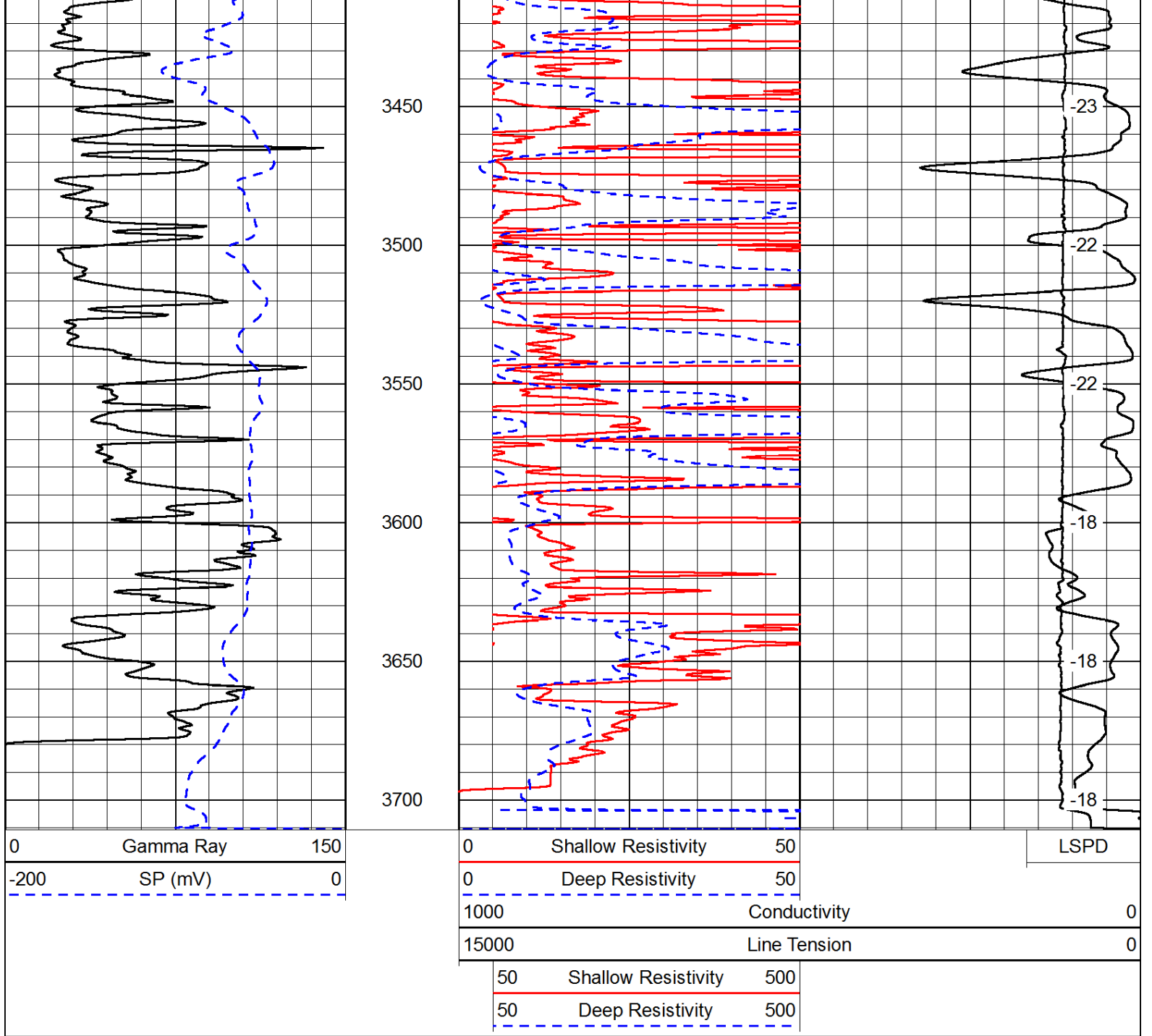




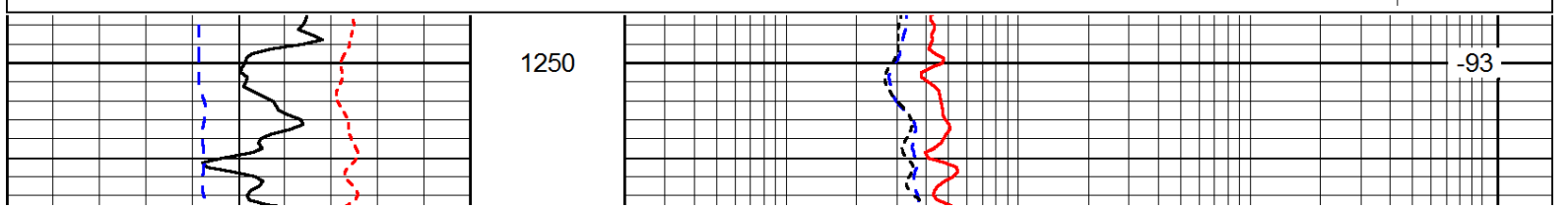
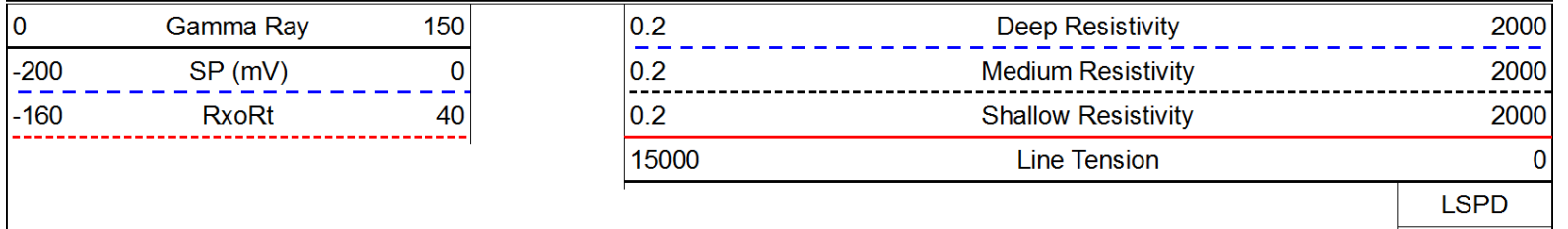


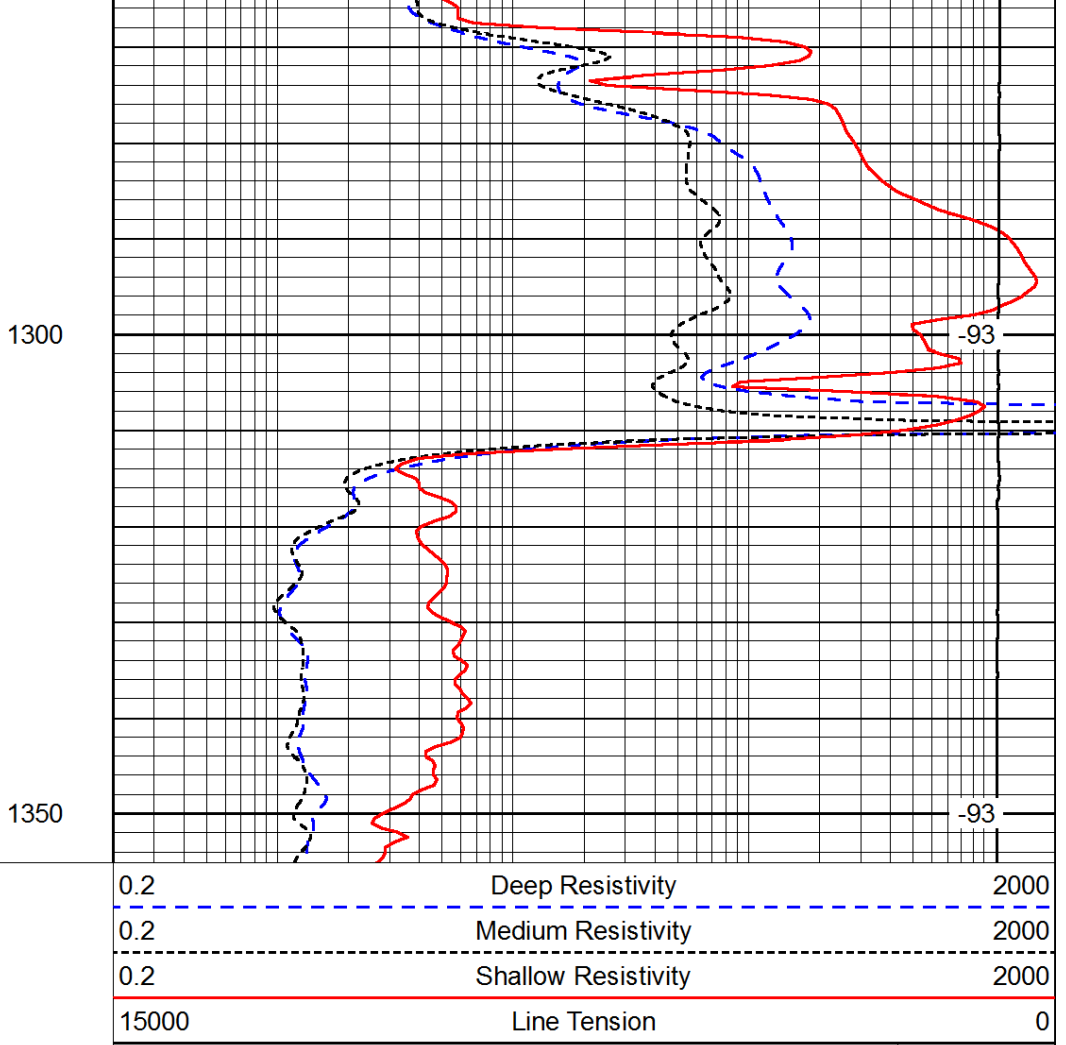
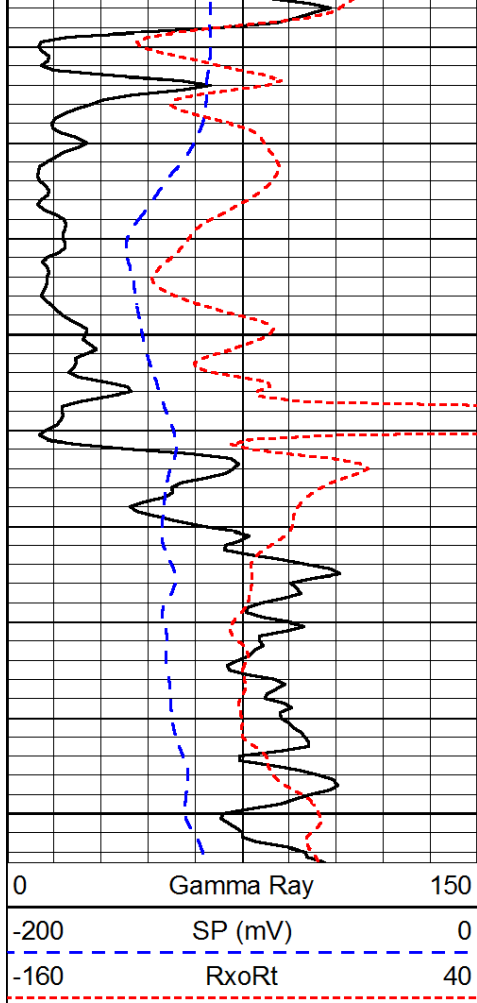






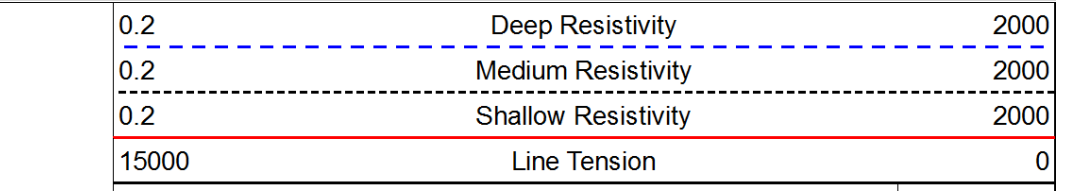
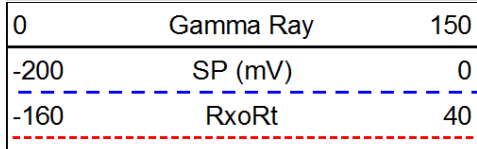
Database File: c:\warrior\data\tdi_dinges family #1\tdi090912hd.db
 Dataset Pathname: dil\tdistack
 Presentation Format: dil
 Dataset Creation: Mon Sep 10 02:11:02 2012
 Charted by: Depth in Feet scaled 1:240



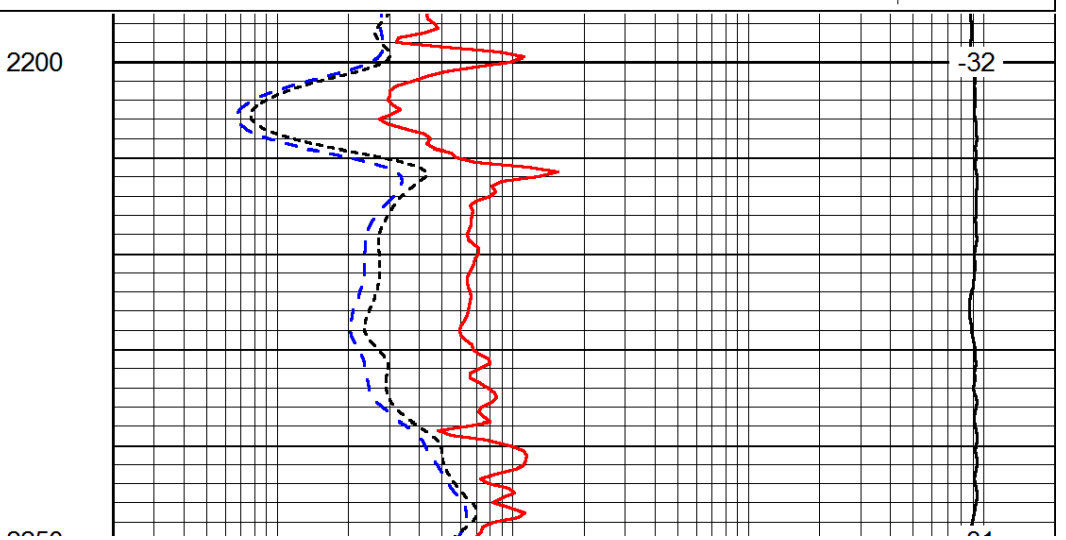
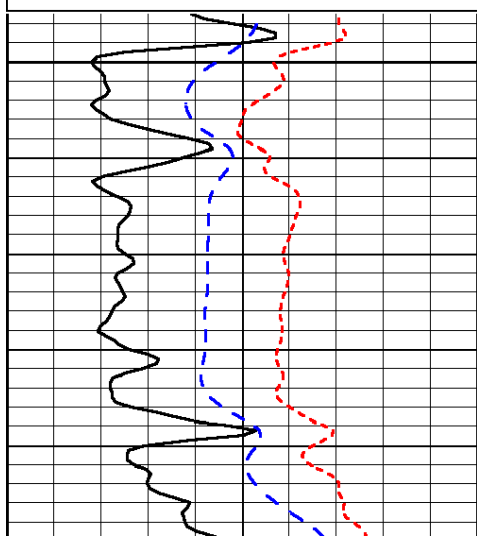


LSPD

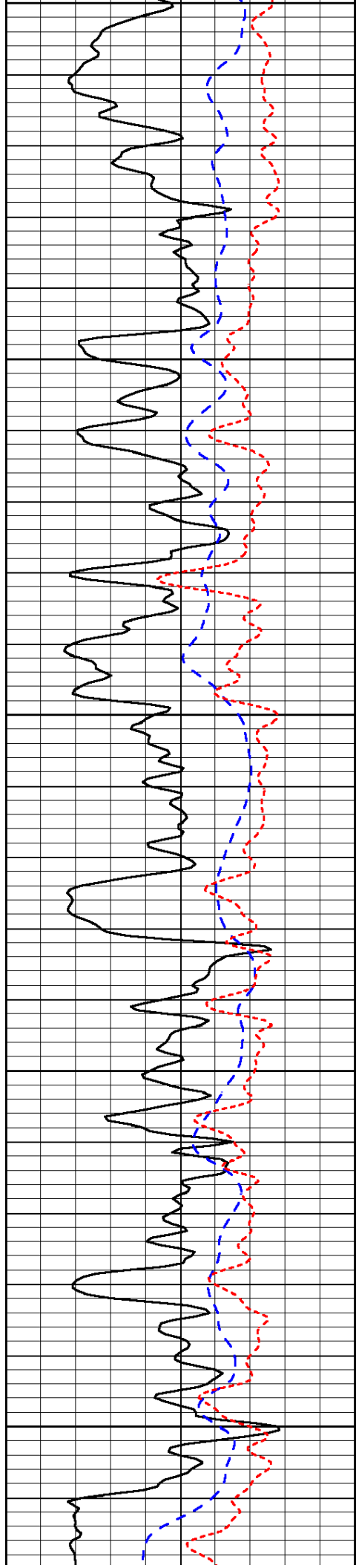
Database File: c:\warrior\data\tdi_dinges family #1\tdi090912hd.db
 Dataset Pathname: dil/tdistack
 Presentation Format: dil
 Dataset Creation: Mon Sep 10 02:11:02 2012
 Charted by: Depth in Feet scaled 1:240



LSPD



LSPD



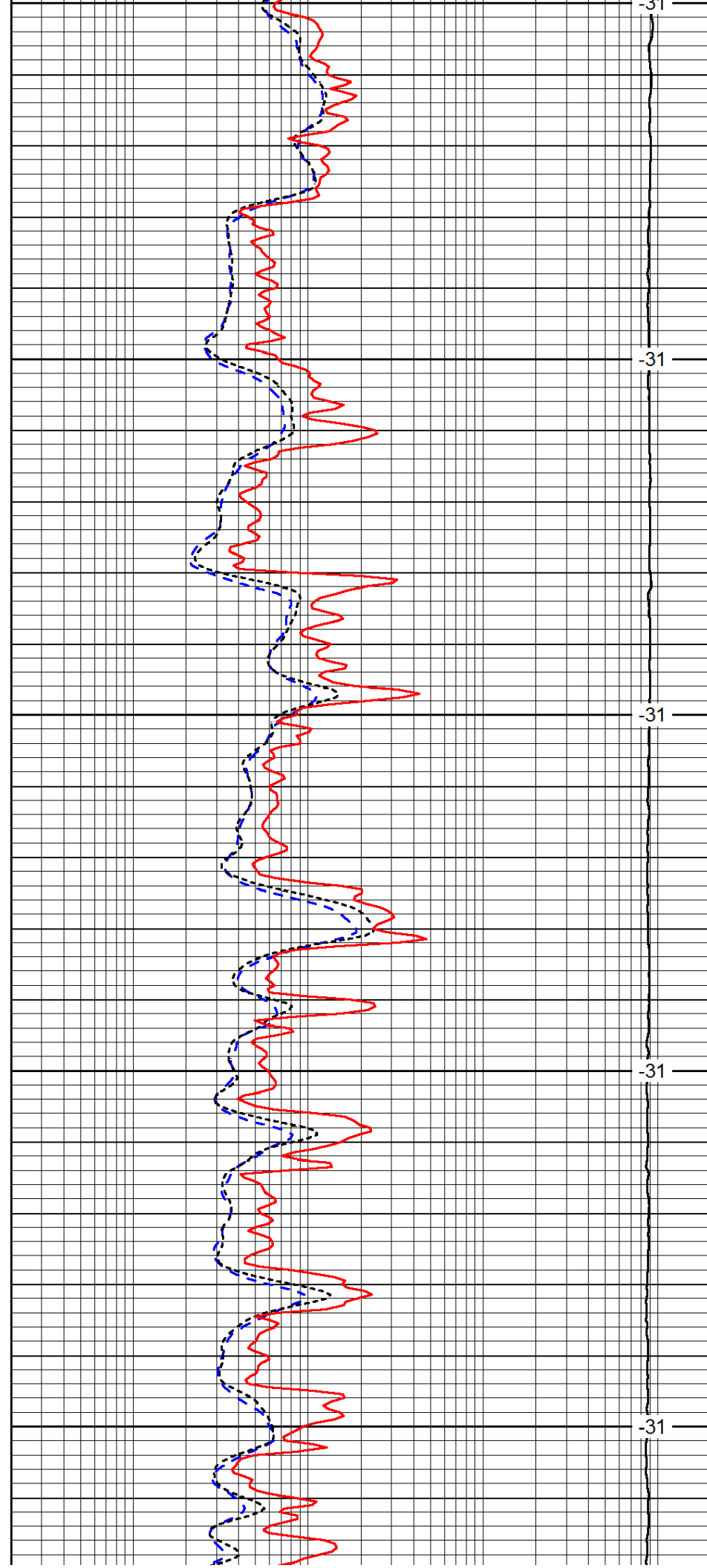
2250

2300

2350

2400

2450



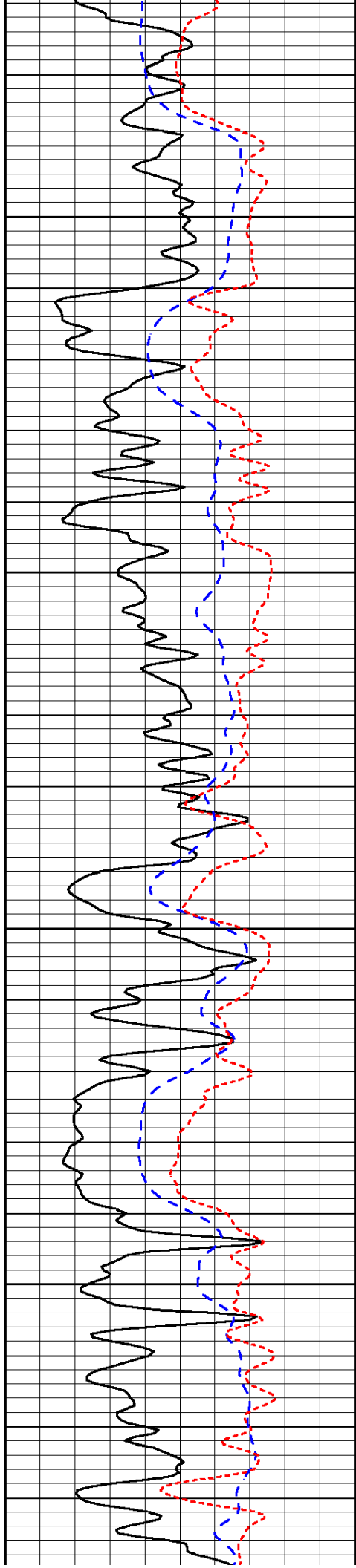
-31

-31

-31

-31

-31

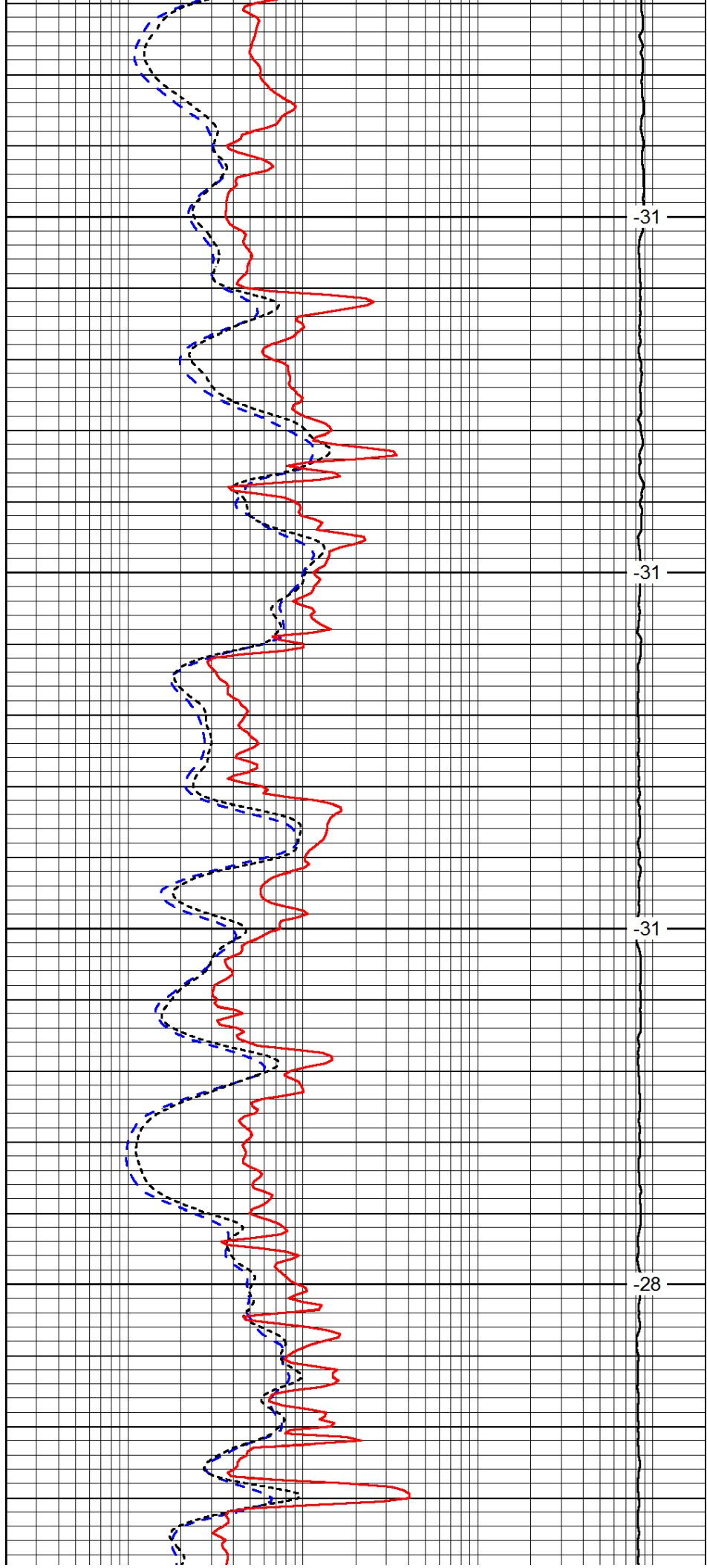


2500

2550

2600

2650

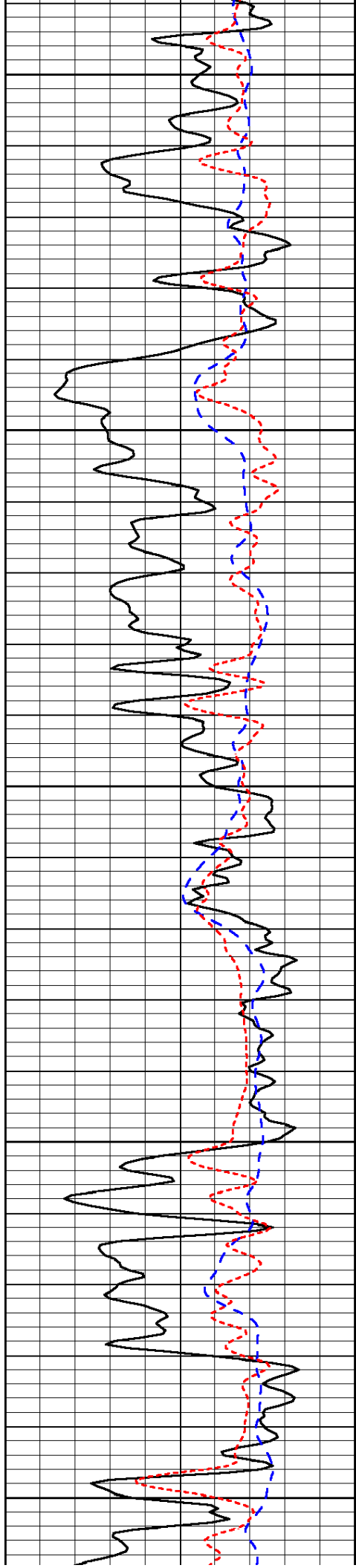


-31

-31

-31

-28



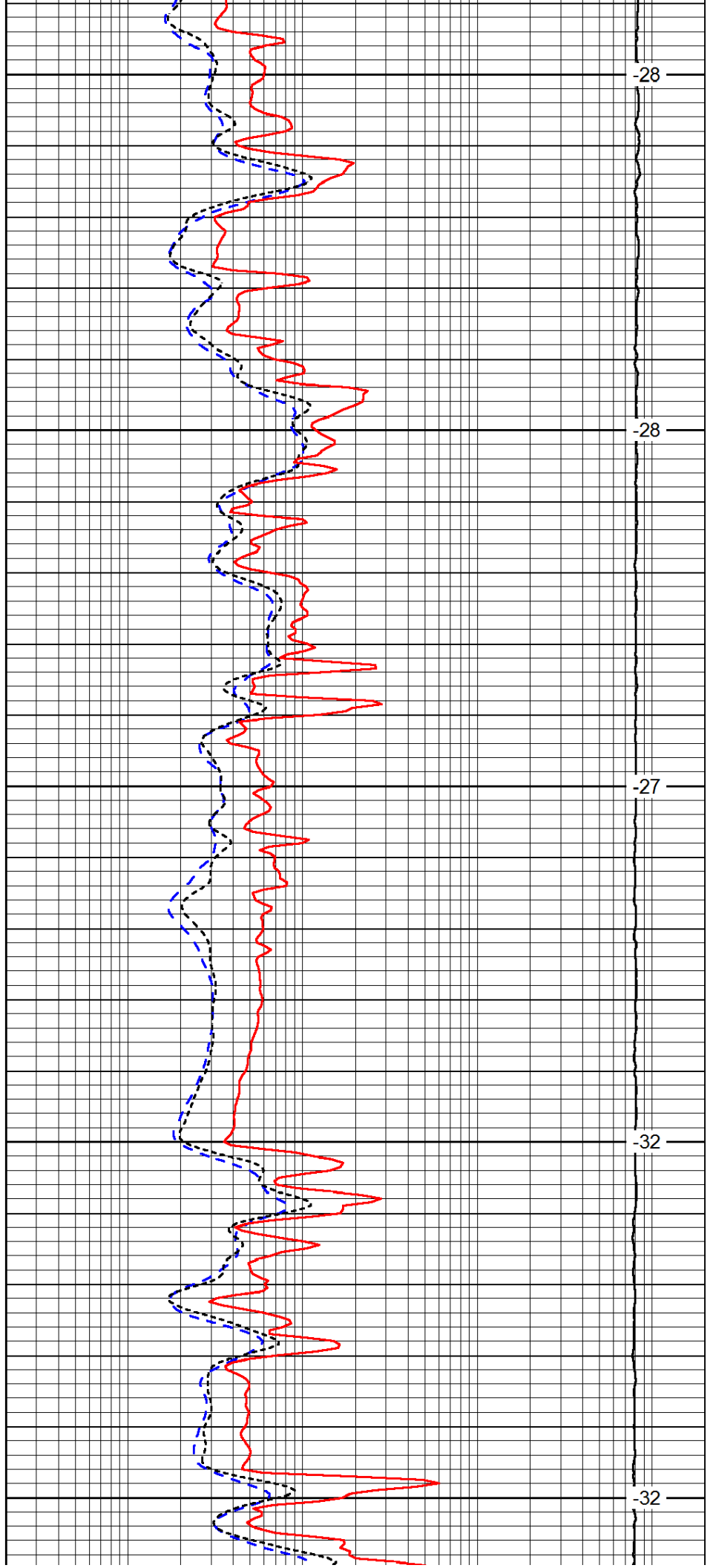
2700

2750

2800

2850

2900



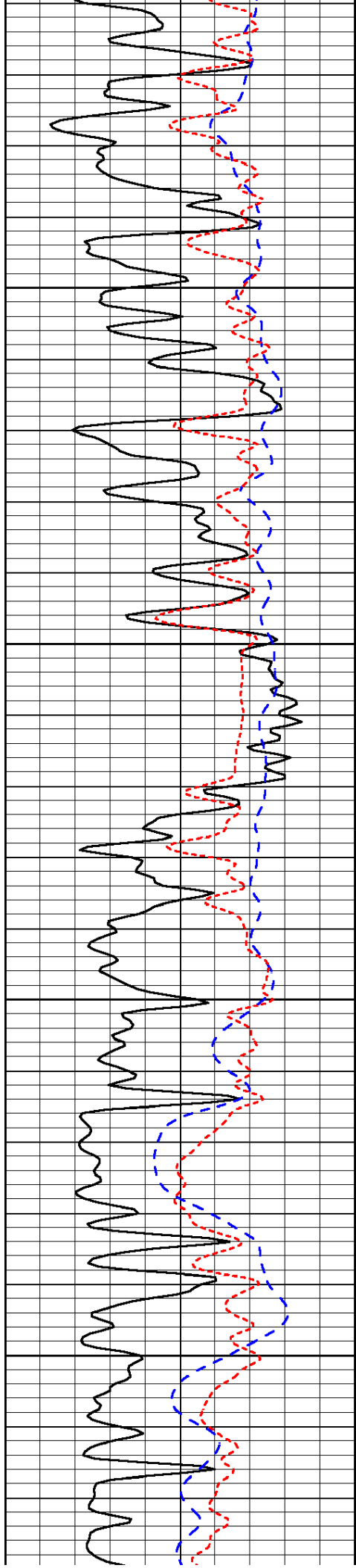
-28

-28

-27

-32

-32

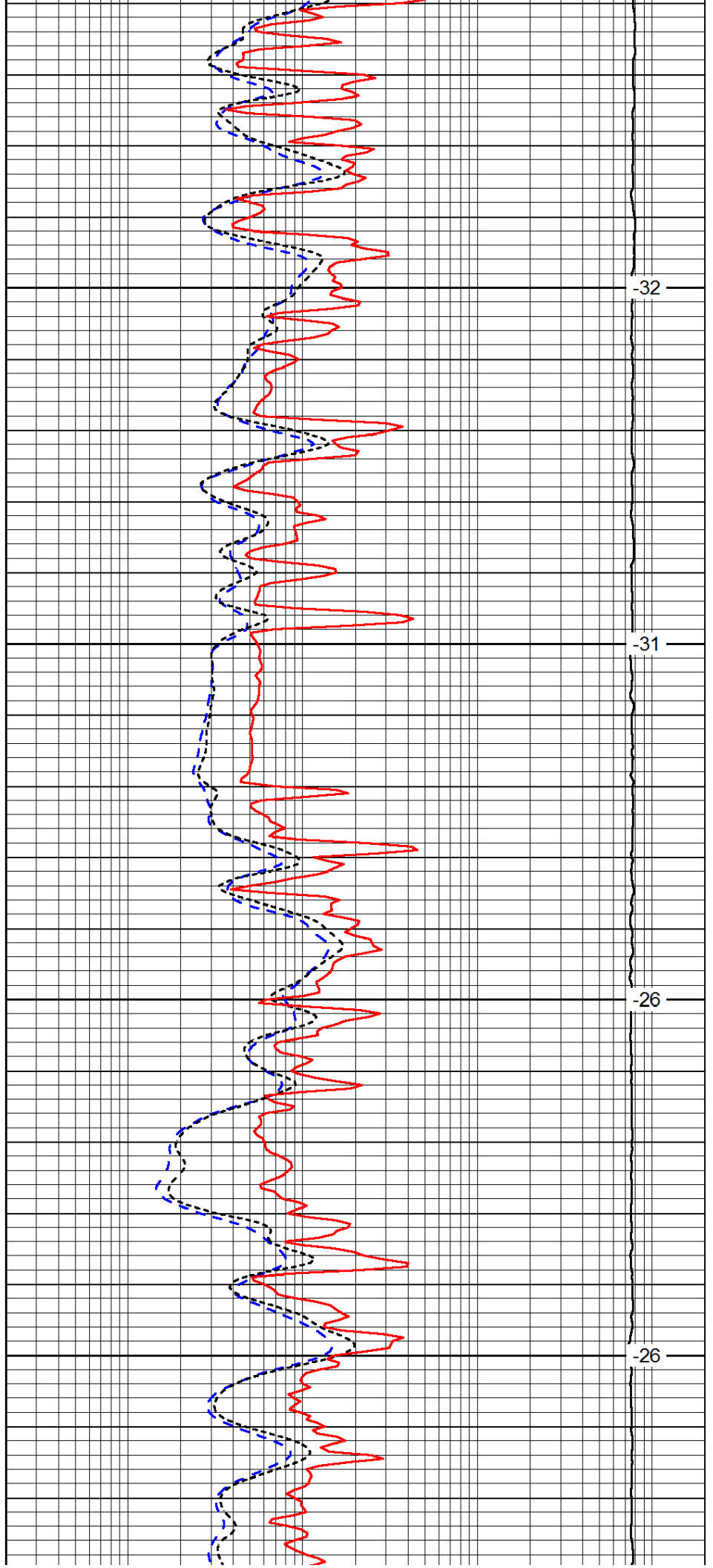


2950

3000

3050

3100

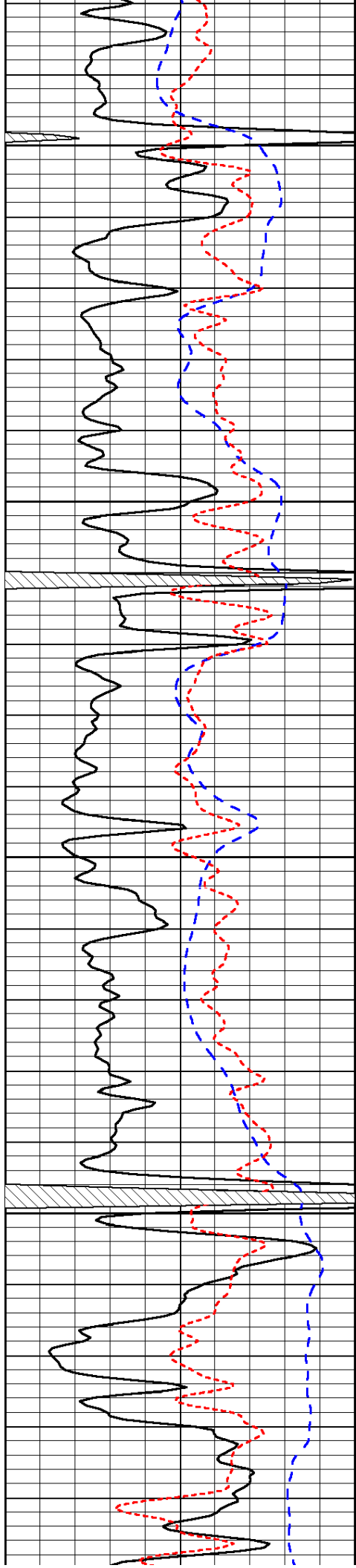


-32

-31

-26

-26



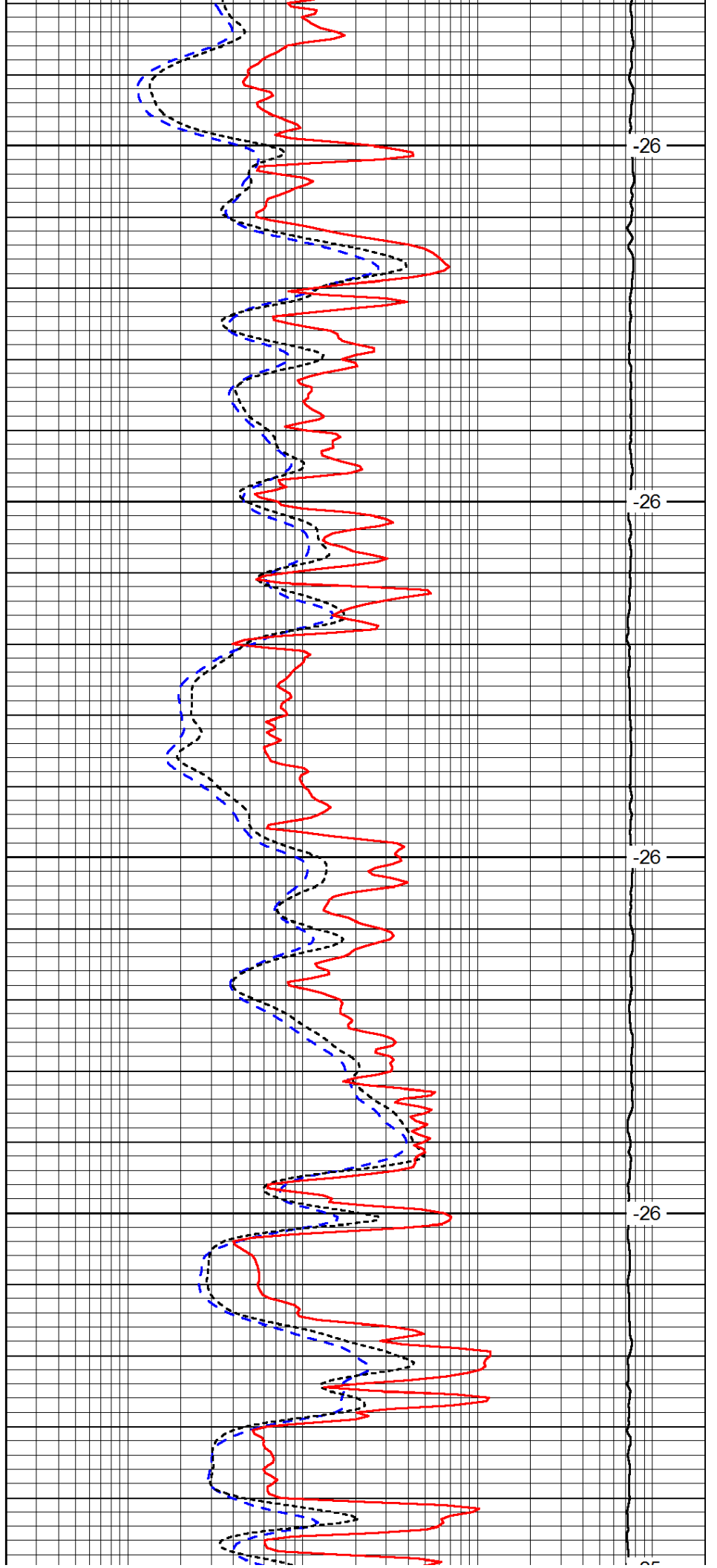
3150

3200

3250

3300

3350



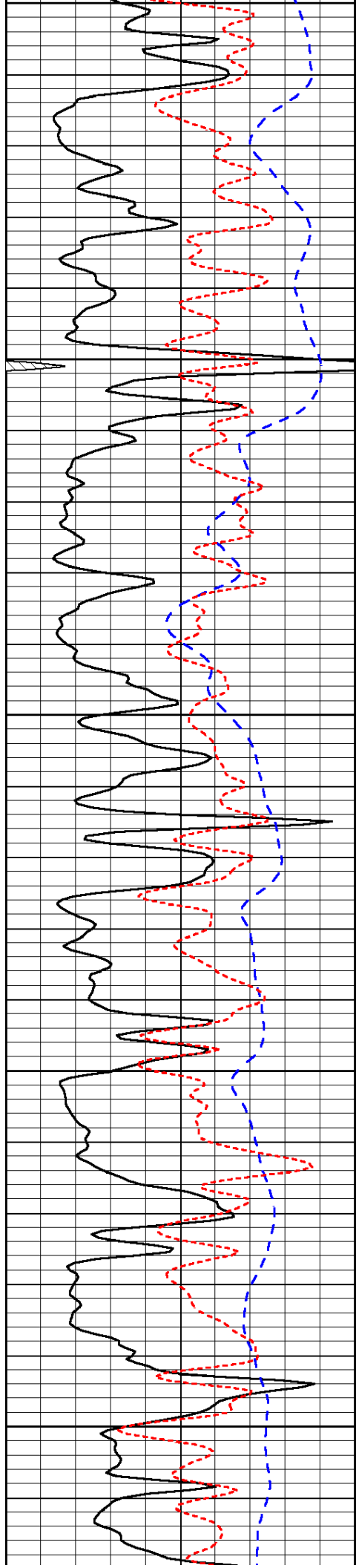
-26

-26

-26

-26

-26



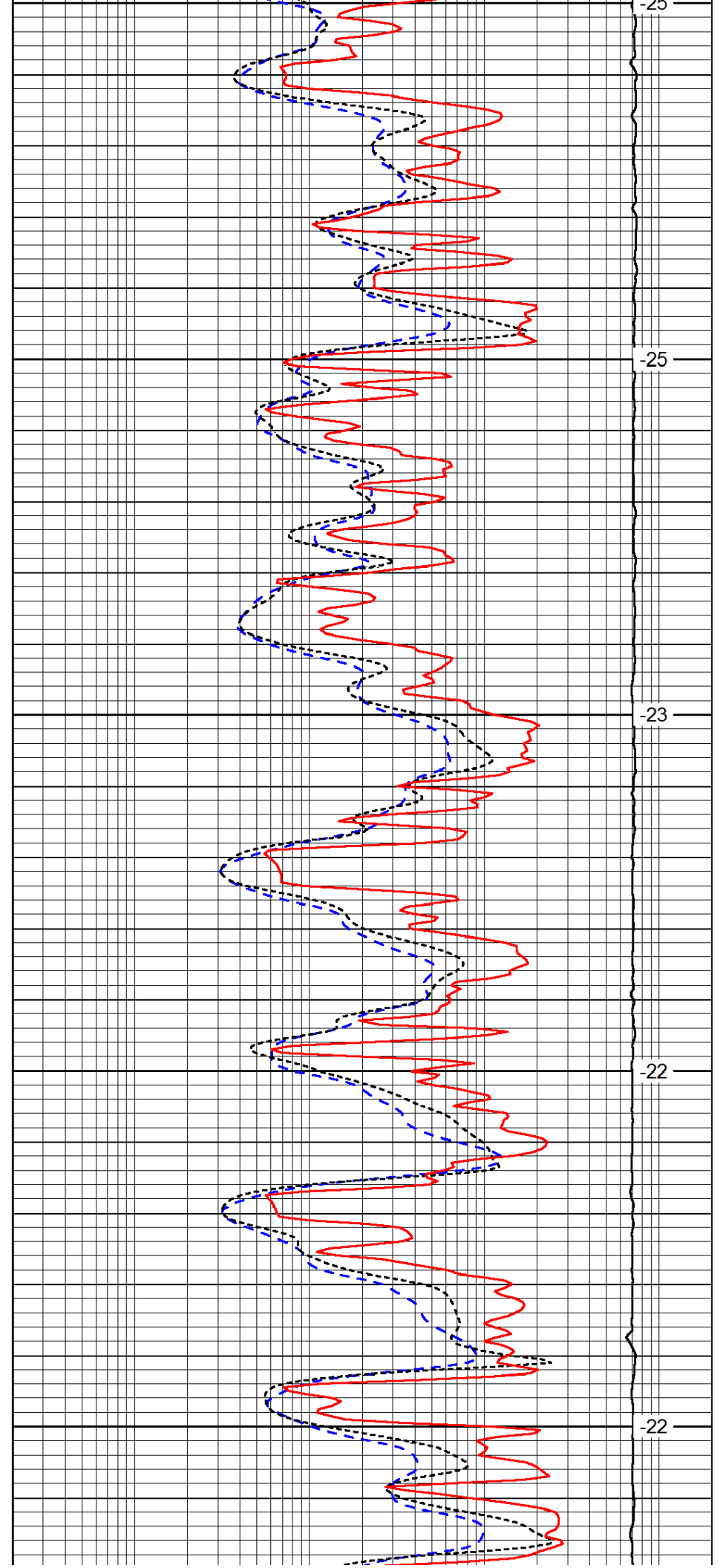
3350

3400

3450

3500

3550



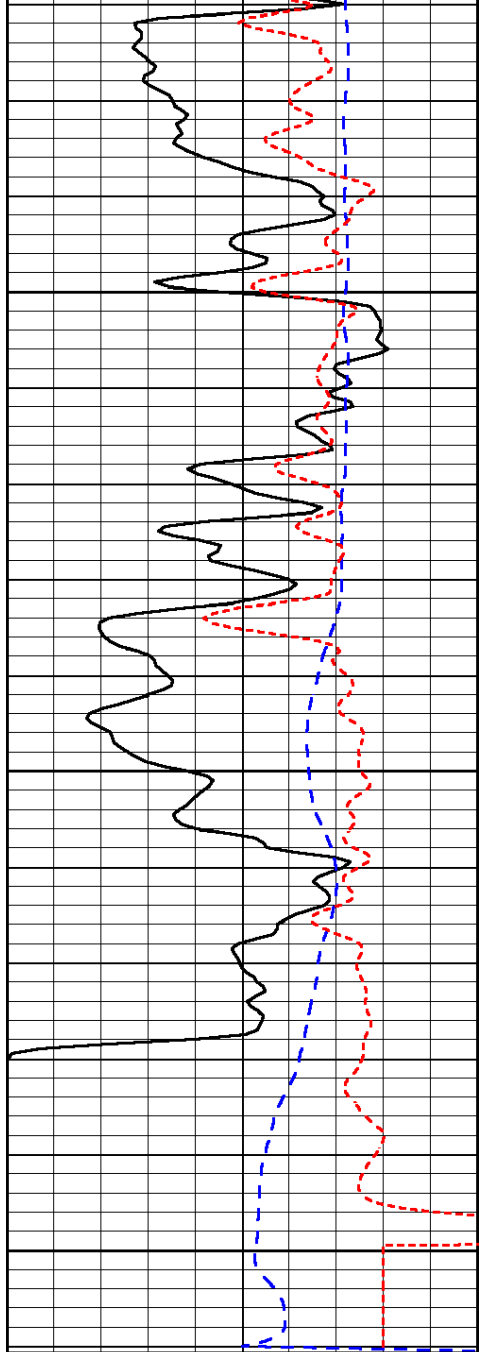
-25

-25

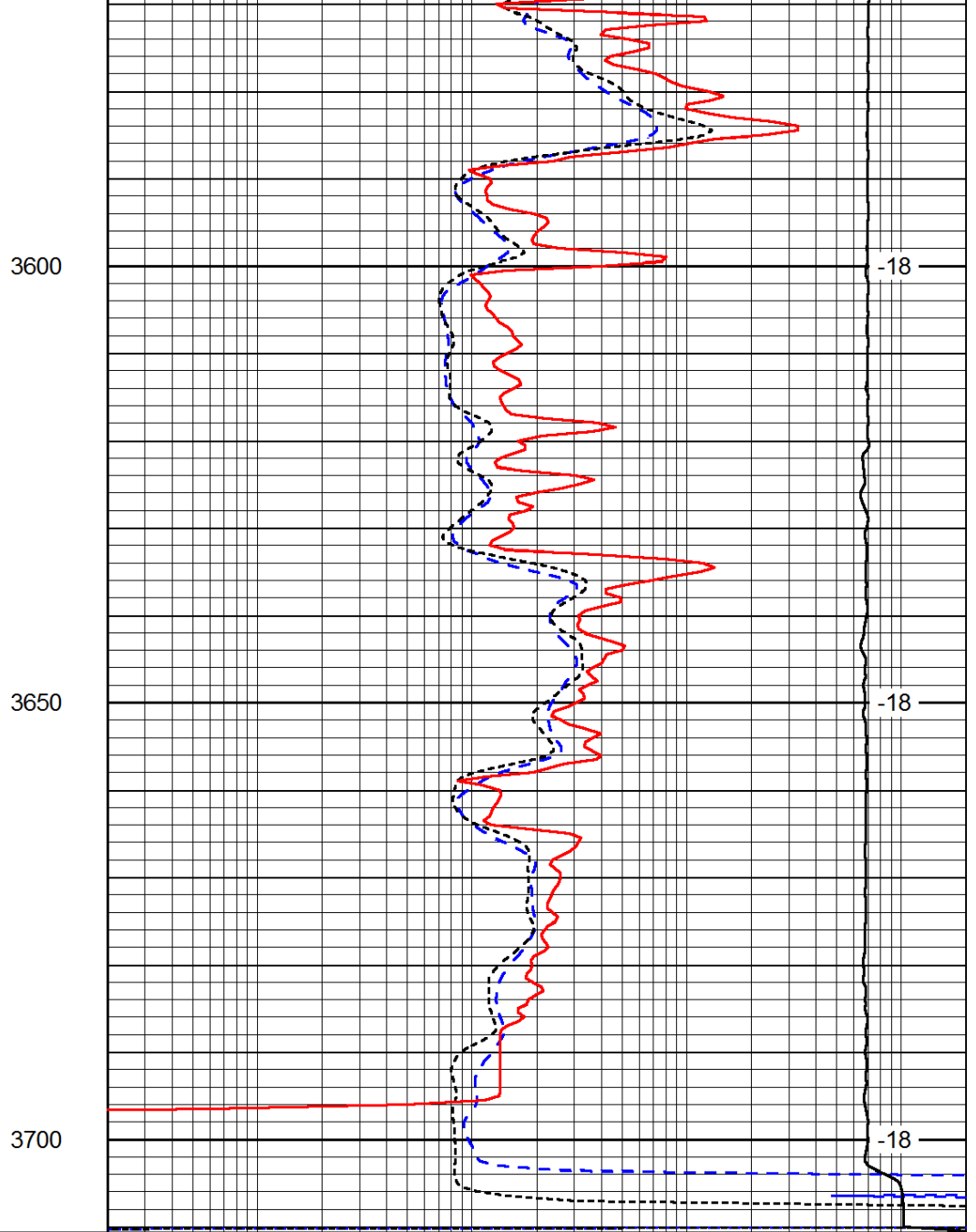
-23

-22

-22



0	Gamma Ray	150
-200	SP (mV)	0
-160	RxoRt	40



0.2	Deep Resistivity	2000
0.2	Medium Resistivity	2000
0.2	Shallow Resistivity	2000
15000	Line Tension	0

LSPD